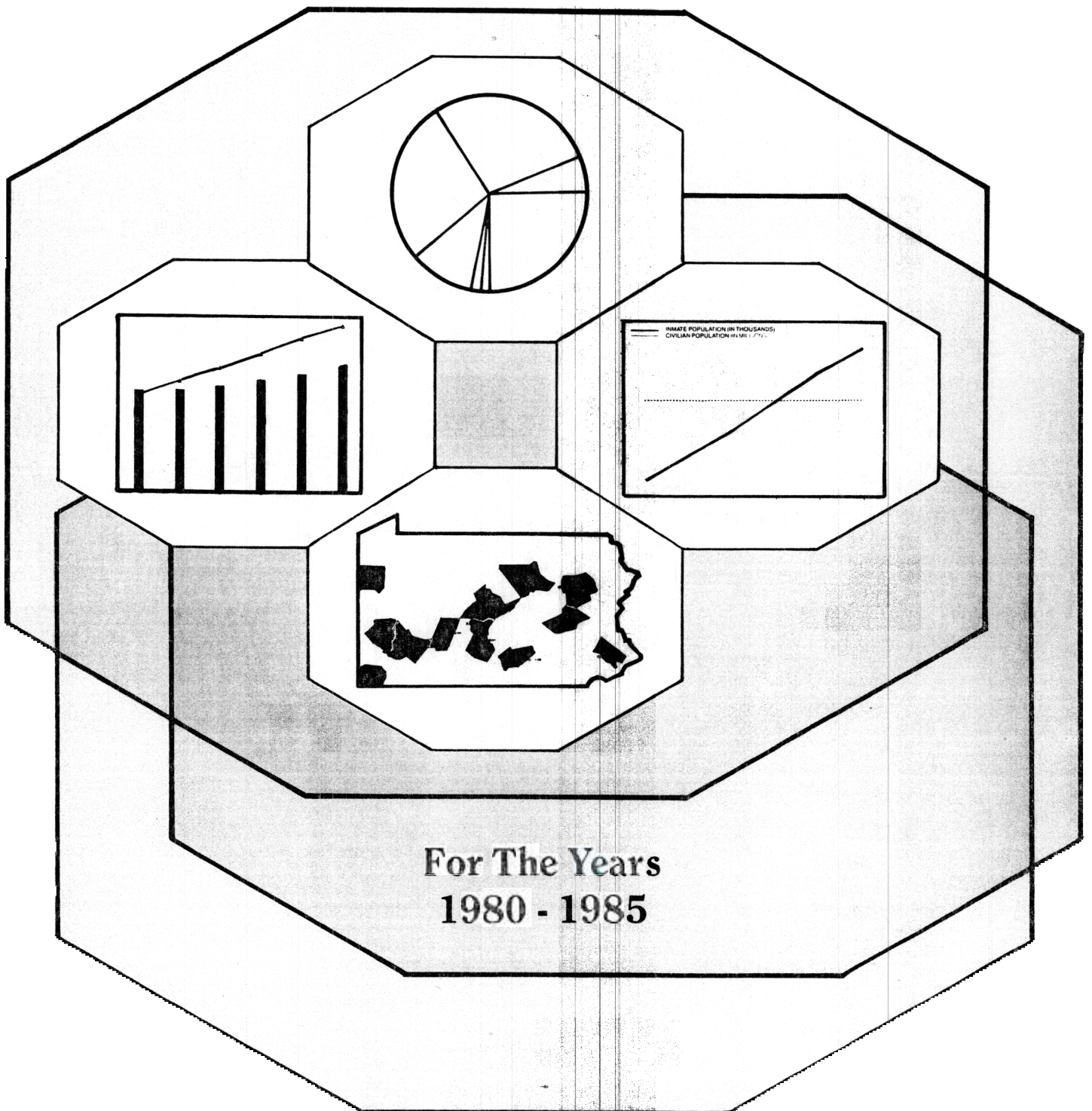


Commonwealth of Pennsylvania
Department of Corrections
STATISTICAL REPORT



DICK THORNBURGH
Governor

GLEN R. JEFFES
Commissioner



Prepared By
Deputy Commissioner for Administration
Lee T. Bernard II

•
Chief of Planning, Research, and Statistics
Ted E. Shumaker

•
Chief Statistician
John H. Mease

•
Support Staff
Linda Woods
June Wolf
Nancy Cease

TABLE OF CONTENTS

SECTION I

HOW

HAS THE INMATE POPULATION INCREASED?	4
DOES THE INMATE POPULATION COMPARE TO CAPACITY?	5
IS THE DEPARTMENT OF CORRECTIONS STAFFED?	9
MANY ESCAPES?	10

SECTION II

WHO

IS RECEIVED BY TYPE OF ADMISSION?	14
IS RECEIVED BY AGE?	17
IS RECEIVED BY SEX?	18
IS RECEIVED BY RACE?	18
IS RECEIVED BY CRIME COMMITTED?	19
IS RECEIVED BY SENTENCE STATUS?	19
IS A LIFER?	20

SECTION III

WHAT

CRIMES WERE COMMITTED?	26
IS THE SENTENCE LENGTH?	27
IS THE AVERAGE LENGTH OF STAY?	27

SECTION IV

WHERE

DO INMATES RECEIVE THEIR SENTENCES?	32
ARE THE NEW PROPOSED AND EXISTING INSTITUTIONS?	40

A special note of thanks to the staff of the Pennsylvania Commission on Crime and Delinquency for assistance in developing the graphs contained in this report.

HOW . . .

- HAS THE INMATE POPULATION INCREASED?
- DOES THE INMATE POPULATION COMPARE TO CAPACITY?
- IS THE DEPARTMENT STAFFED?
- MANY ESCAPES?

TABLE 1
COMPARISON OF
CIVILIAN AND INMATE POPULATIONS
1980 TO 1985

	CIVILIAN POPULATION	INMATE POPULATION*	RATE PER 100,000
1980	11,864,751	8,243	69.5
1981	11,871,203	9,420	79.4
1982	11,885,566	10,572	88.9
1983	11,894,200	11,798	99.2
1984	11,901,000	13,126	110.3
1985	11,911,250	14,260	119.7

The chart above and the bar graph below reveal the rapid and constant rate at which the inmate population has increased as compared to the total population of the Commonwealth.

TABLE 2
INMATES PER 100,000 COMPARED TO CIVILIAN POPULATION
1980 TO 1985

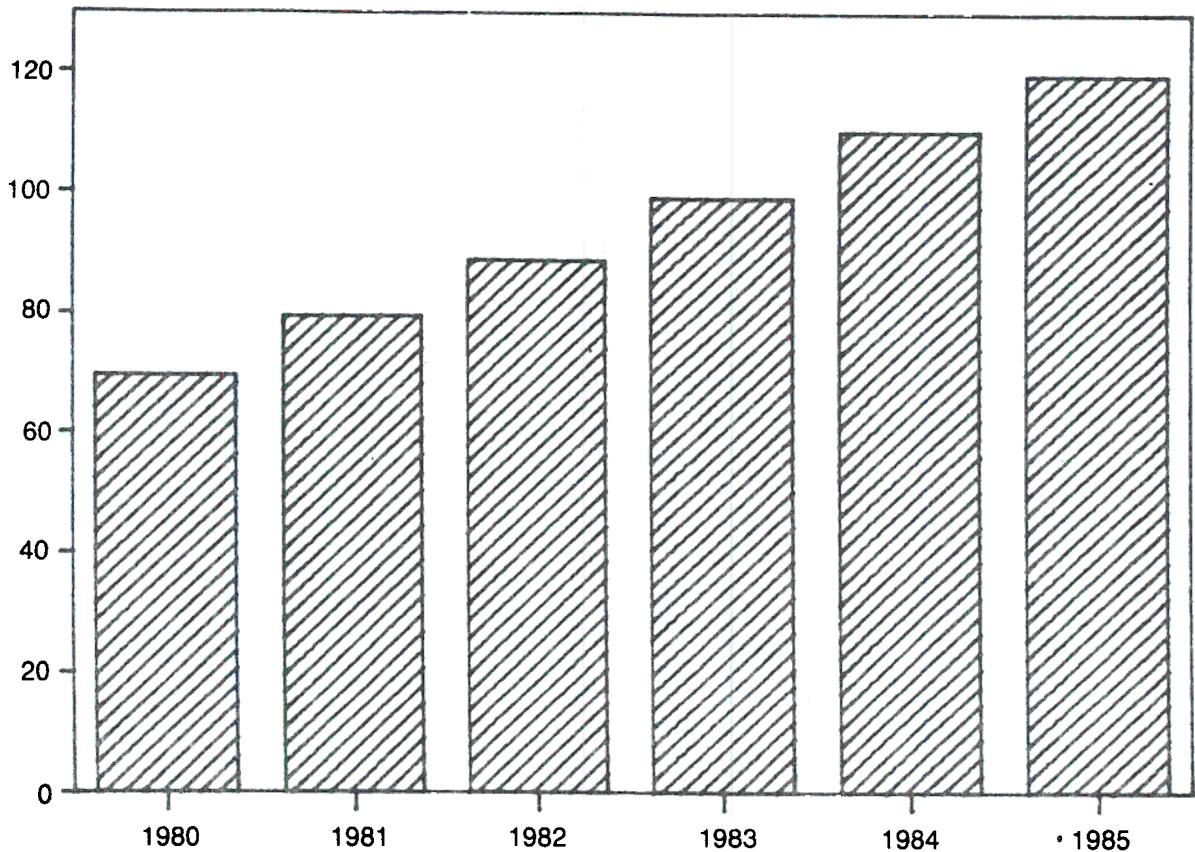


TABLE 3

**COMPARISON OF CIVILIAN AND INMATE POPULATIONS
1980 TO 1985**

POPULATION

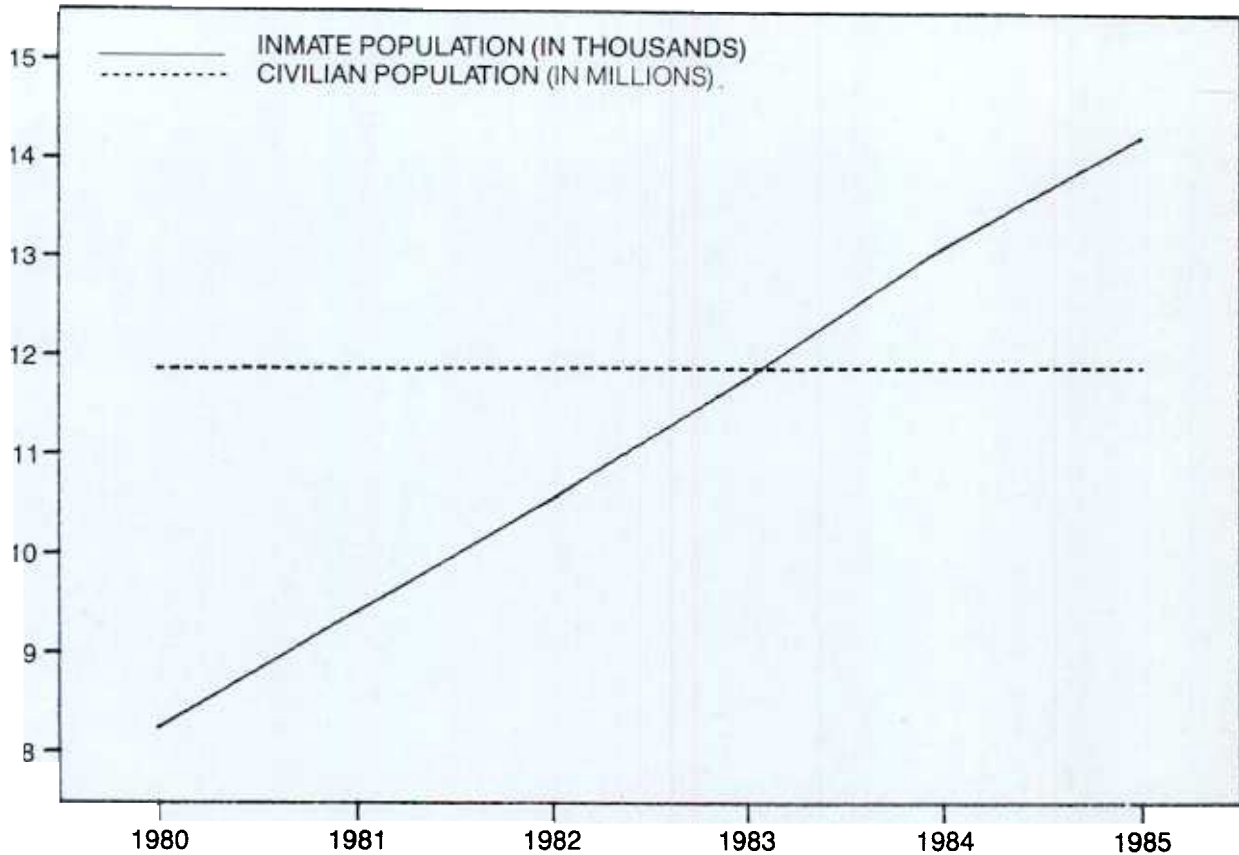


TABLE 4

**INMATE POPULATION VERSUS CAPACITY ON
DECEMBER 31, 1980 TO 1985**

YEAR	NUMBER OF INMATES	CAPACITY	PERCENT OF CAPACITY
1980	8,243	8,537	96.6%
1981	9,420	8,612	109.4%
1982	10,572	8,955	118.1%
1983	11,798	9,517	124.0%
1984	13,126	10,025	130.9%
1985	14,260	10,690	133.4%

Table 4 clearly illustrates the increase in the number of inmates in custody from 1980 to 1985 and demonstrates that the number of inmates has grown faster than the cell space. In 1980 there were 8,243 inmates with a system capacity of 8,537, by 1985 the number of inmates had swelled to 14,260 with a system capacity of 10,690.

TABLE

**INMATE POPULATION VERSUS CAPACITY ON
DECEMBER 3 80 TO 985**

0115A DS

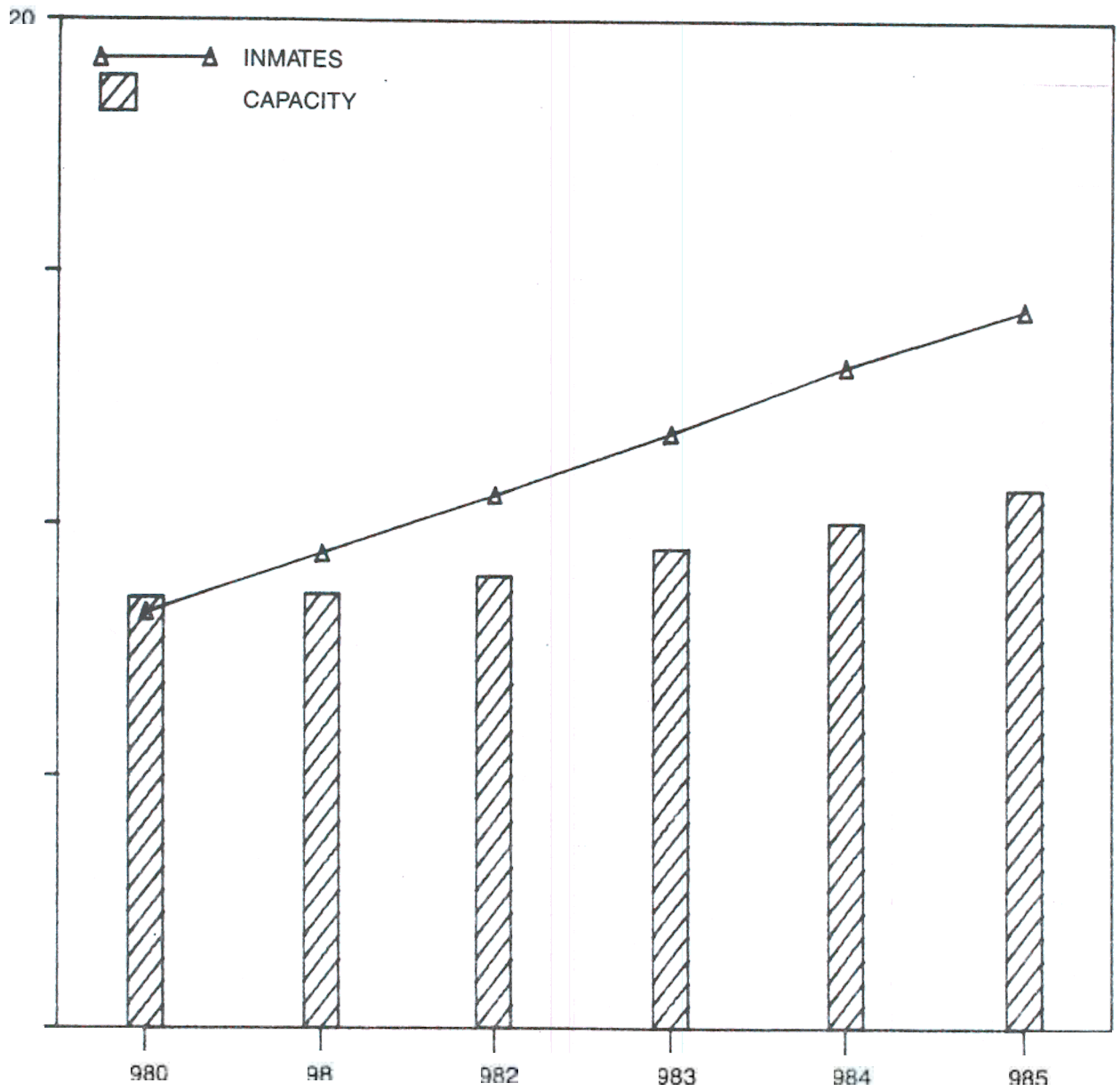


TABLE 6

**INMATE POPULATION VERSUS CAPACITY AS OF
DECEMBER 31, 1985**

INSTITUTION	NUMBER OF INMATES	CAPACITY	PERCENT OF CAPACITY
Camp Hill	2,274	1,678	135.5%
Dallas	1,828	1,410	129.6%
Graterford	2,488	2,144	116.0%
Greensburg	786	460	170.9%
Huntingdon	2,031	1,370	148.2%
Mercer	492	304	161.8%
Muncy	532	465	114.4%
Pittsburgh	1,576	1,130	139.5%
Rockview	1,852	1,260	147.0%
Waynesburg	79	144	54.9%
CSC's	322*	325	99.1%
TOTAL	14,260	10,690	133.4%

* Includes seven inmates in Group Homes.

Table 6 clearly shows that as of December 31, 1985 only one institution, Waynesburg, has fewer inmates than it was designed to house. The Community Service Centers (CSC's) were also under their rated capacity, but slightly at 99.1 percent.

TABLE 7

**YEAR-END POPULATION IN THE
DEPARTMENT OF CORRECTIONS BY FACILITY
1980 TO 1985**

CORRECTIONAL FACILITY	DECEMBER 31						CHANGE, AMOUNT	1980-85 PERCENT
	1980	1981	1982	1983	1984	1985		
Camp Hill	1,258					2,274	1,016	80.8%
Dallas	997					1,828	831	83.4%
Graterford	1,930					2,488	558	28.9%
Greensburg	258					786	528	204.7%
Huntingdon	1,101					2,031	930	84.5%
Mercer	157					492	335	213.4%
Muncy	252					532	280	111.1%
Pittsburgh	1,077					,576	499	46.3%
Rockview	959					,852	893	93.1%
Waynesburg	-					79	79	*
CSC's	249		280			315	66	26.5%
Group Homes	5		9			7	2	*
Total	8,243		10,572	11,798	13,126	14,260	6,017	73.0%

* Not calculated for base populations under 25.

The list of year-end population counts, by facility, clearly demonstrates the growth in the inmate population over the six-year period.

TABLE 8

**MONTH-END POPULATIONS IN THE
DEPARTMENT OF CORRECTIONS
JANUARY, 1980 TO DECEMBER, 1985**

MONTH	1980	1981	1982	1983	1984	1985
January 31	7,865	8,311	9,518	10,646	11,927	13,294
February 28	7,920*	8,386	9,642	10,786	11,976*	13,435
March 31	8,008	8,418	9,776	10,905	12,117	13,483
April 30	8,040	8,645	9,922	10,984	12,225	13,619
May 31	8,083	8,760	10,011	11,056	12,370	13,722
June 30	8,135	8,859	10,161	11,146	12,496	13,834
July 31	8,199	8,959	10,251	11,273	12,595	13,880
August 31	8,123	8,986	10,247	11,352	12,662	13,989
September 30	8,210	9,074	10,336	11,480	12,799	14,069
October 31	8,232	9,246	10,443	11,636	12,979	14,151
November 30	8,299	9,323	10,540	11,698	13,115	14,292
December 31	8,243	9,420	10,572	11,798	13,126	14,260

* February 29

Table 8 provides detailed information, month by month, of the increasing inmate population.

TABLE 9
COMPLEMENT CONTROL REPORT BY LOCATION
AS OF DECEMBER 31, 1985

JOB CLASSIFICATION

Facility	Admin. & Clerical	Cust.	Trtmt.	Edu.	Med.	Voc. & Maint.	Human Serv.	Insp. & Invest.	Ind.	Total
	65 1	326 5	28 1	15 1	16 0	49 0	38 0	5 0	25 4	567 12
	0 0	0 0	0 0	0 0	0 0	7 0	0 0	0 0	0 0	7 0
	45 0	315 11	20 0	9 0	10 0	45 0	23 0	4 0	13 0	484 11
	0 0	0 0	0 0	0 0	0 0	1 0	0 0	0 0	0 0	1 0
	78 3	380 7	35 3	11 0	9 4	47 4	45 1	6 1	28 4	639 27
	22 1	137 9	13 0	4 0	8 0	10 0	13 0	0 0	4 0	211 10
	47 2	262 3	17 2	10 0	13 0	40 1	25 0	4 0	26 2	444 10
	22 0	113 5	9 0	4 0	7 0	11 0	13 0	1 0	0 0	180 5
	30 0	131 3	11 0	9 0	15 0	20 2	13 1	2 0	2 1	233 7
	61 1	244 3	25 0	12 0	14 0	37 0	26 1	4 0	13 0	436 5
	0 0	0 0	0 0	0 0	0 0	5 0	0 0	0 0	0 0	5 0
	50 0	246 1	19 0	8 2	10 1	48 0	25 0	5 0	16 0	427 4
	0 0	0 0	0 0	0 0	1 0	0 0	0 0	0 0	0 0	1 0
	15 1	56 7	3 2	1 2	4 2	5 0	9 0	0 1	0 0	93 15
Community Services										
Filled.....	19	1	44	0	0	0	83	4	0	151
Vacant.....	2	0	8	0	0	0	11	0	0	21
Central Office										
Filled.....	72	2	8	3	2	3	4	19	10	123
Vacant.....	3	0	0	0	0	0	0	0	1	4
Total										
Filled.....	526	2,213	232	86	108	329	317	54	137	4,002
Vacant.....	14	54	16	5	7	7	14	2	12	131

* Will not become operational until 1986 or 1987.

Table 9 is a listing of the staff complement (filled and vacant positions) at each facility and the Central Office.

TABLE 10

**NUMBER OF ESCAPES FROM THE DEPARTMENT OF CORRECTIONS
1980 TO 1985, BY FACILITY AND BY TYPE**

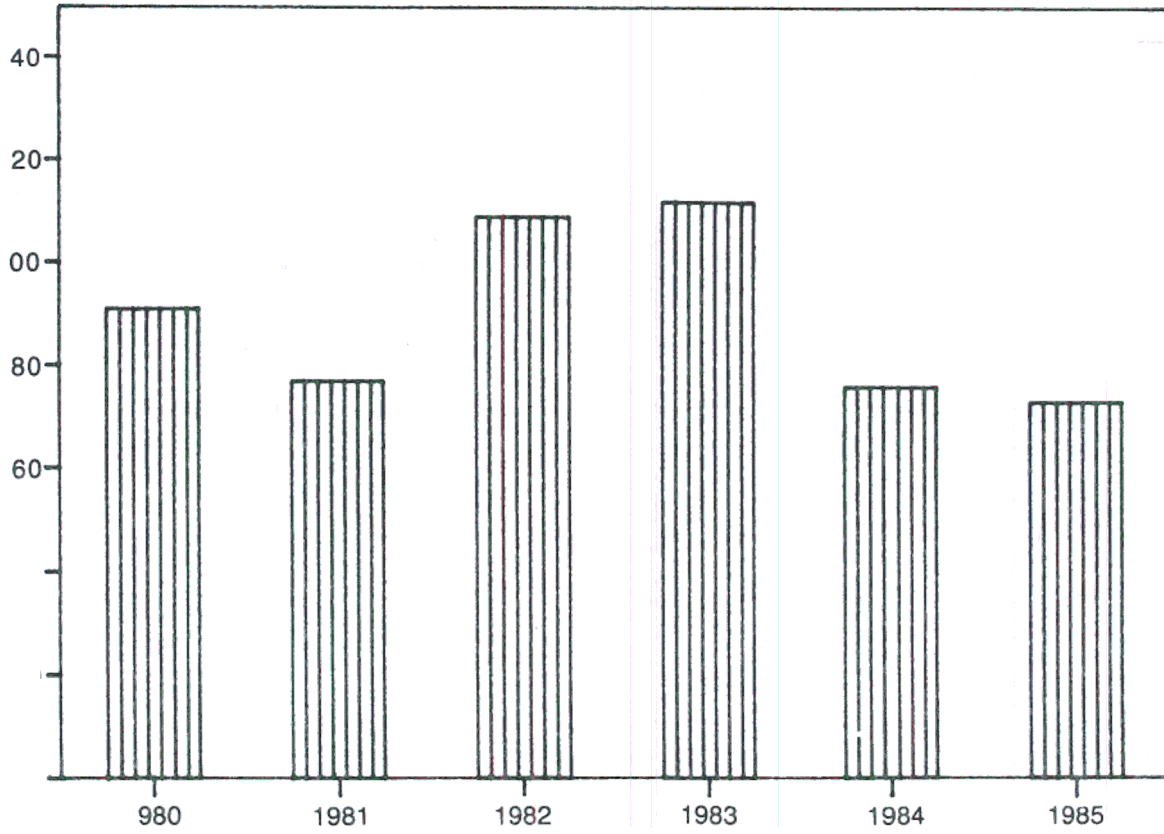
FACILITY		1980	1981	1982	1983	1984	1985	TOTAL
Camp Hill	Breach	0	0	13	3	0	0	16
	Others	1	6	5	16	6	0	34
Dallas	Breach	0	0	2	0	0	0	2
	Others	5	4	3	1	2	3	18
Graterford	Breach	2	0	1	3	0	0	6
	Others	15	4	2	2	4	7	34
Greensburg	Breach	2	0	0	0	0	1	3
	Others	0	6	1	4	8	1	20
Huntingdon	Breach	1	0	2	0	0	2	5
	Others	0	2	1	4	1	2	10
Mercer	Breach	3	1	0	0	2	2	8
	Others	0	0	0	1	2	1	4
Muncy	Breach	16	15	12	16	4	2	65
	Others	2	1	2	2	2	1	10
Pittsburgh	Breach	0	0	0	0	0	0	0
	Others	0	1	1	4	0	3	9
Rockview	Breach	3	2	6	0	0	0	11
	Others	6	2	5	6	6	4	29
Waynesburg	Breach					0	0	0
	Others					1	0	1
Institution Total	Breach	27	18	36	22	6	7	116
	Others	29	26	20	40	32	22	169
CSC's		35	33	53	50	38	46	255
Total Escapes		91	77	109	112	76	75	540

Note: Others include escapes that occurred outside the wall/fence while on work detail, work and/or educational release and furlough.

TAB

**TOTAL NUMBER OF ESCAPES
1980 TO 1985**

ESCAPES:



Tables and identify the number, type and location of escapes from correction facilities with past years. It is interesting to note that despite an increase in escapes from 92 in 1983 to 98 in 1984, the total number of successful escapes from correction facilities has decreased from 110 in 1983 to 73 in 1985.

WHO . . .

- IS RECEIVED BY TYPE OF ADMISSION?
- IS RECEIVED BY AGE?
- IS RECEIVED BY SEX?
- IS RECEIVED BY RACE?
- IS RECEIVED BY CRIME COMMITTED?
- IS RECEIVED BY SENTENCE STATUS?
- IS THE LIFER?

TABLE 12
**SUMMARY OF POPULATION & MOVEMENT TRENDS
 1980 TO 1985**

YEAR	POPULATION JANUARY 1	TOTAL ADMISSIONS	TOTAL DISCHARGES	POPULATION DECEMBER 31
1980	7,806	3,964	3,527	8,243
1981	8,243	4,767	3,590	9,420
1982	9,420	5,167	4,015	10,572
1983	10,572	5,559	4,333	11,798
1984	11,798	5,874	4,546	13,126
1985	13,126	5,983	4,849	14,260

During the six-year period January 1, 1980, through December 31, 1985, the Pennsylvania Department of Corrections experienced 6,454 more admissions (an average of 1,076 annually) than discharges.

TABLE 13
**ADMISSIONS TO THE DEPARTMENT OF
 CORRECTIONS, 1980 TO 1985**

	COURT COMMITMENTS		PAROLE VIOLATORS		County Prison Transfers	Total Admissions
	State Corr. Instit.	Reg. Corr. Facilities	State	County		
1980	2,206	877	762	44	75	3,964
1981	2,674	877	1,121	50	45	4,767
1982	3,032	873	1,180	44	38	5,167
1983	3,219	903	1,343	54	40	5,559
1984	3,316	1,112	1,361	53	32	5,874
1985	3,168	1,138	1,582	69	26	5,983

The proportion of parole violators returned to prison compared to total admissions from 1980 (20.3%) to 1985 (27.6%) has increased substantially during the period. Since 1982, court commitments to state regional correctional facilities located in Greensburg (Westmoreland County) and in Mercer (Mercer County) have increased significantly over prior years. These regional facilities receive short-term inmates from surrounding counties. It is encouraging to note that there was a slight decrease in court commitments to the eight state correctional institutions within the Department of Corrections during 1985.

TAI

ADMISSIONS BY TYPE TO 985

ADMISSIONS

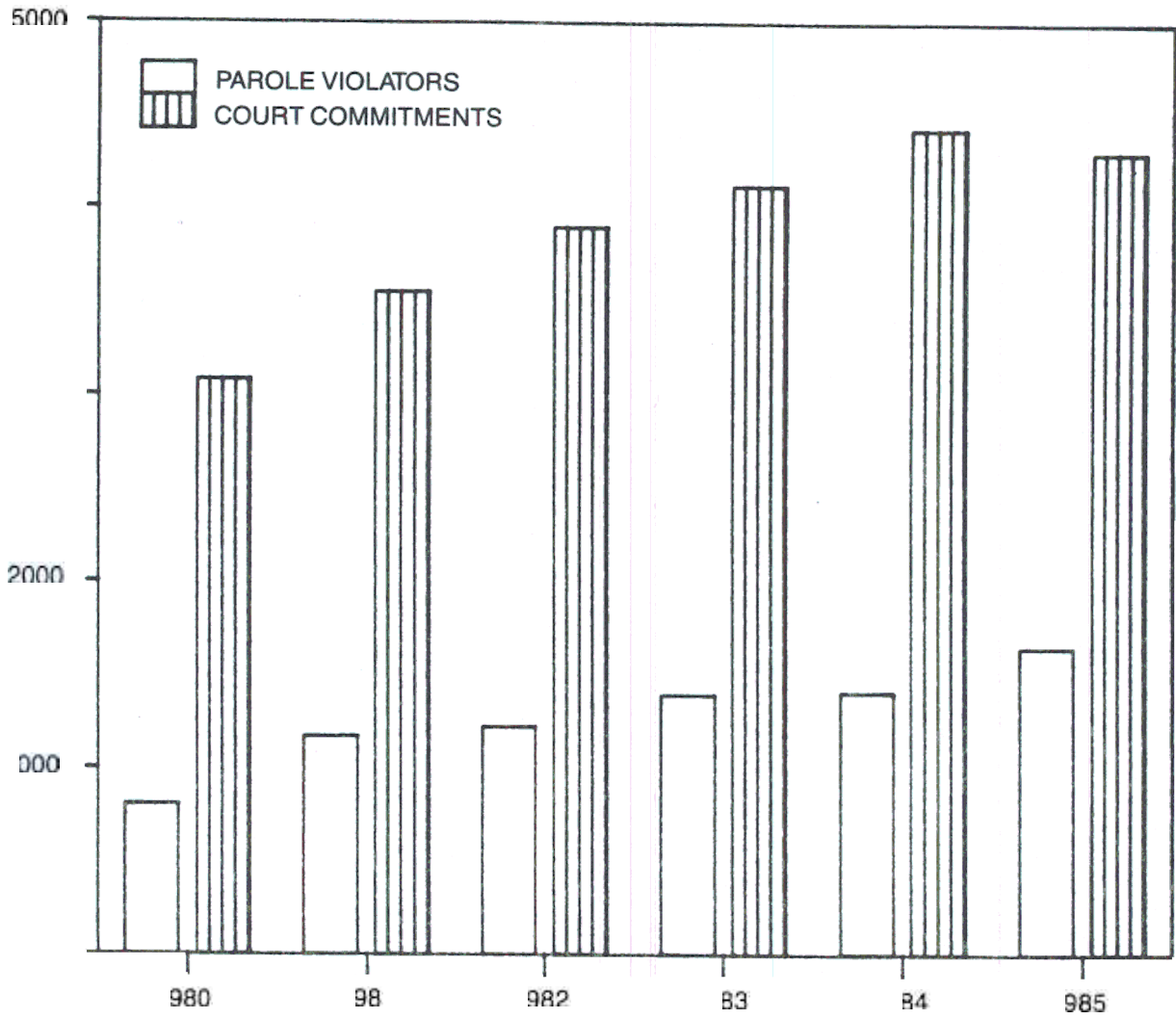


TABLE 15

**STATUS OF INMATES IN DEPARTMENT OF CORRECTIONS ON
DECEMBER 31, 1980 TO 1985**

	DECEMBER 31					
	1980	1981	1982	1983	1984	1985
Status:						
Sentenced	7,107	7,889	8,876	9,868	11,011	11,837
Parole Violators	1,050	1,422	1,608	1,852	2,052	2,352
Detentioners	53	59	44	86	29	23
Unknown	33	50	44	42	34	48
Total	8,243	9,420	10,572	11,798	13,126	14,260
Percent distribution:						
Sentenced	86.2	83.8	84.0	83.6	83.9	83.0
Parole Violators	12.7	15.1	15.2	15.7	15.6	16.5
Detentioners	0.7	0.6	0.4	0.3	0.2	0.2
Unknown	0.4	0.5	0.4	0.4	0.3	0.3
Total	100.0	100.0	100.0	100.0	100.0	100.0

Table 15 is presented to show that the number and proportion of parole violators to the total inmate population has increased consistently during the period.

TABLE 16

**DISCHARGES FROM THE DEPARTMENT OF CORRECTIONS
1980 TO 1985, BY TYPE**

	1980	1981	1982	1983	1984	1985	Total	Percent of Total
Unconditional discharges:								
Maxed out	195	231	247	302	296	388	1,659	6.7
By court order	215	138	112	123	110	115	813	3.2
Total	410	369	359	425	406	503	2,472	9.9
Conditional discharges:								
State parole	1,979	1,933	2,185	2,386	2,479	2,597	13,559	54.5
County parole	691	684	727	745	810	967	4,624	18.6
Reparoled (state)*	297	438	556	544	669	668	3,172	12.8
Total	2,967	3,055	3,468	3,675	3,958	4,232	21,355	85.9
Deaths	22	26	21	29	40	35	173	0.7
Other	128	140	167	204	142	79	860	3.5
Total discharges	3,527	3,590	4,015	4,333	4,546	4,849	24,860	100.0

* Includes parole violators who were not officially recommitted by the PBPP to the Department of Corrections but were detained and later reinstated on parole as follows: 1980-14, 1981-52, 1982-80, 1983-76, 1984-116, and 1985-120. These parole violators are not included in Table 29.

As expected, the largest majority (85.9%) of inmates released are under the supervision of state and county paroling authorities. Over one-half of those paroled were released the first time to supervision by the Pennsylvania Board of Probation and Parole (PBPP). Another 13% were state parole violators reparaled by the PBPP. Those inmates serving maximum sentences under two years who were paroled (18.6%) to the supervision of local county probation/parole offices across the Commonwealth.

TABLE 17

**COURT COMMITMENTS RECEIVED IN THE DEPARTMENT OF CORRECTIONS
1980 TO 1985, BY AGE**

Age	1980	1981	1982	1983	1984	1985	Total	Percent of Total
Under 18 . . .	40	53	78	41	31	27	270	1.15
18 to 20 . . .	547	660	632	647	631	566	3,683	15.74
21 to 24 . . .	827	964	1,062	1,066	1,125	1,015	6,059	25.90
25 to 29 . . .	715	801	890	985	1,054	1,011	5,456	23.32
30 to 34 . . .	407	484	561	614	732	716	3,514	15.02
35 to 39 . . .	203	229	310	340	390	424	1,896	8.10
40 to 44 . . .	127	125	163	181	190	194	980	4.19
45 to 49 . . .	87	77	80	79	94	123	540	2.31
50 to 54 . . .	42	41	43	61	54	63	304	1.30
55 to 59 . . .	34	27	19	36	36	58	210	0.90
60 to 64 . . .	12	19	13	18	23	26	111	0.47
65 and over	4	10	3	5	17	14	53	0.23
Unknown . . .	38	61	51	49	51	69	319	1.36
Total	3,083	3,551	3,905	4,122	4,428	4,306	23,395	100.00
Median	25.8	25.4	24.9	26.4	26.9	27.5	26.4	
Average	28.1	27.7	27.9	28.4	28.3	29.5	28.5	
Percent under 25 .	46.4	48.1	46.0	43.1	40.8	38.0	43.4	
Percent 40 & over	10.0	8.6	8.3	9.3	9.5	11.3	9.5	

During the past six years, 16.9 percent of all defendants sentenced by local courts to state correctional facilities were under twenty-one years of age at the time of reception. Approximately one-fourth were in the 21 to 24 age group. Table 17 demonstrates that inmates received by the Department of Corrections in 1985 are older than inmates received in 1980.

TABLE 18

**PROFILE OF COURT COMMITMENTS RECEIVED
IN 1980 BY AGE, RACE & SEX**

Age at Reception	RACE		SEX		Total	PERCENT	
	White	Non-White	Male	Female		White	Male
Under 18	18	22	40	0	40	45.0%	100.0%
18 to 20	337	210	531	16	547	61.6%	97.1%
21 to 24	510	317	803	24	827	61.7%	97.1%
25 to 29	381	334	671	44	715	53.3%	93.8%
30 to 34	187	220	378	29	407	45.9%	92.9%
35 to 39	113	90	186	17	203	55.7%	91.6%
40 to 44	62	65	113	14	127	48.8%	89.0%
45 to 49	47	40	82	5	87	54.0%	94.3%
50 to 54	29	13	41	1	42	69.0%	97.6%
55 to 59	20	14	31	3	34	58.8%	91.2%
60 to 64	5	7	12	0	12	41.7%	100.0%
65 and over	3	1	2	2	4	75.0%	50.0%
Unkown	24	14	30	8	38	63.2%	78.9%
Total	1,736	1,347	2,920	163	3,083	56.3%	94.7%
Median Age	24.9	26.8	25.5	29.3	25.8		
Average Age	27.7	28.6	27.9	31.3	28.1		
Percent under 25 . . .	50.5	41.2	47.5	25.8	46.4		
Percent 40 & over . . .	9.7	10.5	9.7	16.1	10.1		

TABLE 19

**PROFILE OF COURT COMMITMENTS RECEIVED
IN 1985 BY AGE, RACE & SEX**

Age at Reception	RACE		SEX		Total	PERCENT	
	White	Non-White	Male	Female		White	Male
Under 18	13	14	26	1	27	48.1%	96.3%
18 to 20	269	297	557	9	566	47.5%	98.4%
21 to 24	490	525	976	39	1,015	48.3%	96.2%
25 to 29	496	515	941	70	1,011	49.1%	93.1%
30 to 34	343	373	667	49	716	47.9%	93.2%
35 to 39	213	211	397	27	424	50.2%	93.6%
40 to 44	112	82	181	13	194	57.7%	93.3%
45 to 49	67	56	115	8	123	54.5%	93.5%
50 to 54	43	20	61	2	63	68.3%	96.8%
55 to 59	35	23	56	2	58	60.3%	96.6%
60 to 64	16	10	23	3	26	61.5%	88.5%
65 and over	8	6	14	0	14	57.1%	100.0%
Unkown	49	20	59	10	69	71.0%	85.5%
Total	2,154	2,152	4,073	233	4,306	50.0%	94.6%
Median Age	27.8	27.2	27.4	29.5	27.5		
Average Age	30.1	29	29.4	31.2	29.5		
Percent under 25 . . .	36.7	39.2	38.8	22.0	38.0		
Percent 40 & over . . .	13.4	9.2	11.2	12.6	11.3		

In comparing profiles of court commitments received during 1980 and 1985 (see Tables 18 and 19), the distribution by sex remained constant; however, the distribution by race changed from 56.3% white in 1980 to 50.0% white in 1985. Court commitments received during 1985 were slightly older than those received during 1980.

TABLE 20

**COMPARISON OF INMATES IN THE DEPARTMENT OF CORRECTIONS ON
DECEMBER 31, 1980 AND 1985, BY AGE GROUP AND BY OFFENSE**

Offense Classification	12/31/80				12/31/85			
	Under 25	25-39	40 and over	Total	Under 25	25-39	40 and over	Total
Crime Index Offenses:								
Murder:								
1st degree	86	455	170	711	87	679	330	1,096
2nd degree	93	242	50	385	88	337	68	493
3rd degree	182	293	113	588	175	595	165	935
Unspecified	18	36	10	64	22	85	34	141
Manslaughter:								
Voluntary	26	109	37	172	21	126	55	202
Involuntary	15	20	10	45	15	43	16	74
Homicide by Motor Vehicle ..	N/A	N/A	N/A	N/A	13	16	2	31
Forcible rape	201	402	84	687	181	709	179	1,069
Robbery	632	1,158	163	1,953	915	2,013	263	3,191
Aggravated Assault	122	242	53	417	195	493	129	817
Burglary	524	650	104	1,278	743	1,380	239	2,362
Theft	152	169	35	356	185	487	100	772
Arson	25	51	9	85	48	86	29	163
Total	2,076	3,827	838	6,741	2,688	7,049	1,609	11,346
Part II Offenses:								
Other Assaults	41	46	17	104	42	114	22	178
Fraud	4	29	21	54	7	54	33	94
Receiving stolen property ...	60	60	11	131	93	153	29	275
Forgery	28	69	17	114	40	124	28	192
Statutory rape	6	15	13	34	9	29	15	53
Deviate sexual intercourse ..	22	61	33	116	46	185	122	353
Narcotic drug laws	53	194	64	311	64	405	145	614
Weapons	10	33	2	45	12	70	17	99
Drunken driving	3	8	1	12	10	21	14	45
Prison breach	62	85	13	160	45	122	20	187
Kidnapping	14	44	9	67	19	65	15	99
All others	88	127	58	273	125	365	119	609
Total	391	771	259	1,421	512	1,707	579	2,798
Unknown	24	46	11	81	26	72	18	116
Total inmates	2,491	4,644	1,108	8,243	3,226	8,828	2,206	14,260
Percent of total	30.2	56.3	13.4	100.0	22.6	61.9	15.5	100.0

When comparing inmate populations in the Department of Corrections on December 31, 1980 and 1985 by age and offense, table 20 clearly shows that the percentage of inmates under 25 decreased significantly during the period. As expected, inmates serving time for first degree murder (mostly lifers) are getting older because so few have been released since 1980. Unless present trends change, the Department of Corrections will be faced with an older inmate population each year.

LIFERS

The present influx of inmates serving a life sentence and their length of stay are concerns of administrators within the Department of Corrections. While the percentage (10%) of lifers versus inmate population has remained constant since 1980, the number of lifers has increased 69% from 848 to 1,429 on December 31, 1980 and 1985 respectively. At the end of 1985, the 1,429 lifers in the Department of Corrections have already served an average of 8.5 years, well over the national average of seven years. The Pennsylvania Commission on Crime and Delinquency Prison Overcrowding Task Force anticipates the number of lifers to exceed 2,000 by 1990.

TABLE 21

**PROFILE OF LIFERS RECEIVED IN
DEPARTMENT OF CORRECTIONS**

	1980	1981	1982	1983	1984	1985	Total	Percent of Total
Committing County:								
Philadelphia	42	49	46	86	77	46	346	50.6
Allegheny	6	18	16	9	11	15	75	10.9
Delaware	3	5	10	6	3	4	31	4.5
Dauphin	2	6	3	0	6	11	28	4.1
Bucks	4	8	3	1	6	2	24	3.5
Berks	1	2	0	5	4	3	15	2.2
Chester	2	5	3	1	3	1	15	2.2
York	2	1	2	4	3	2	14	2.0
Lancaster	4	0	2	1	2	2	11	1.6
Remaining Counties	17	30	25	16	20	19	127	18.4
Age:								
Under 20	6	13	18	15	5	6	63	9.2
20-24	26	37	24	37	48	26	198	28.7
25-29	28	27	23	38	32	28	176	25.4
30-34	8	21	19	19	26	15	108	15.9
35-39	8	8	12	9	11	18	66	9.6
40-44	4	7	5	8	7	4	35	5.1
45 and over	3	11	9	3	6	10	42	6.1
Average	27.6	28.9	28.9	27.8	28.7	30.7	28.9	
Race:								
White	30	57	47	45	55	45	279	40.6
Non-white	53	67	63	84	80	62	409	59.4
Sex:								
Male	83	117	104	124	127	100	655	95.2
Female	0	7	6	5	8	7	33	4.8
TOTAL.....	83	124	110	129	135	107	688	100

Table 21 indicates that the typical lifer received in the Department of Corrections since 1980 is a 29-year-old black male from Philadelphia County.

TABLE 22

**LIFERS RECEIVED BY THE DEPARTMENT OF CORRECTIONS BY COUNTY
1980 TO 1985**

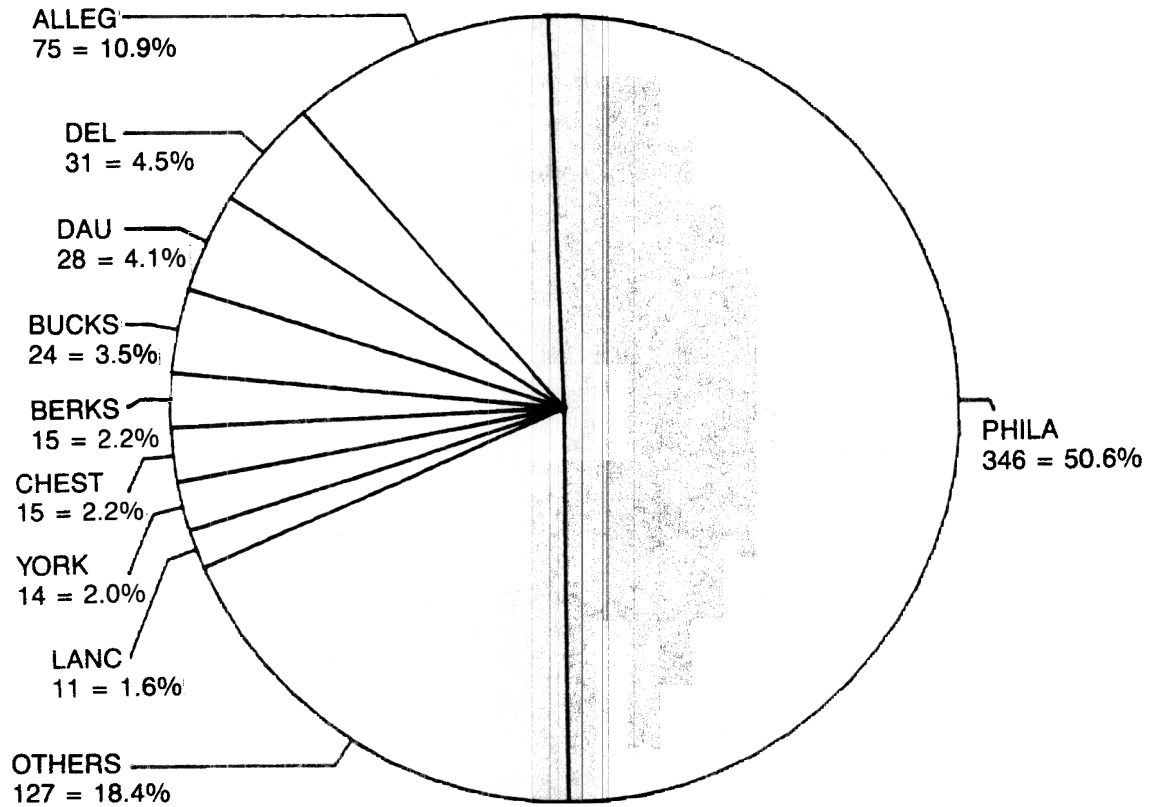


TABLE 23

**TEN HIGHEST COUNTIES WITH INMATES SERVING LIFE SENTENCE
ON DECEMBER 31, 1980 TO 1985**

DECEMBER 31									
Rank	Committing county	1980	1981	1982	1983	1984	1985	Average	Percent of Total
	Philadelphia							585.0	51.4
	Allegheny							109.9	9.7
	Dauphin							54.9	4.8
	Delaware							43.3	3.8
	York							29.5	2.6
	Bucks							29.3	2.5
	Chester							22.3	2.0
	Montgomery							15.8	1.4
	Lancaster							15.7	1.4
	Berks							15.3	1.3
	Subtotal							920.0	80.9
	Remaining counties							216.8	19.1
Total		848	964	1,074	1,195	1,311	1,429	1,136.8	100.0

Table 22 and 23 indicate that, while Philadelphians represent only 14% of the state's civilian population, over half of the lifers serving time in the Department of Corrections are sentenced in Philadelphia County. Ten counties, including five southeastern counties, contributed 81% of the lifer population.

TABLE 24

**TIME SERVED BY LIFERS IN THE DEPARTMENT OF CORRECTIONS
ON DECEMBER 31, 1980 TO 1985**

Time Served	1980	1981	1982	1983	1984	1985	Average	Percent of Total
							407.5	35.8
							401.5	35.3
							22.67	19.9
							69.0	6.1
							17.5	1.5
							6.3	0.6
							4.2	0.4
							3.3	0.3
							0.8	0.1
							1,136.8	100.0
							7.00	
							7.86	

Table 24 clearly shows that the percentage of lifers serving less than ten years of their sentence had decreased from 78.1% to 65.6% during the past six years. On December 31, 1985, one-half of the lifers had served less than 7.6 years. The number of lifers who have served 10 to under 15 years has increased substantially each year.

TABLE 25

LIFERS COMMUTED AND RELEASED, 1980 TO 1985

	Number Released	Average years Served
1980.....	16	18.0
1981.....	5	19.7
1982.....	4	20.4
1983.....	3	14.6
1984.....	1	13.0
1985.....	2	24.1
Total	31	18.5

From 1971 to 1979, 203 commuted lifers served an average of 17.2 years before they were released. Since 1980, only a few commuted lifers have been released from Pennsylvania's state correctional institutions, and their time served averaged 18.5 years when released.

TABLE 26

**TIME SERVED BY COMMUTED LIFERS
1971 TO 1985**

	Number Released	Average Time Served (yrs.)
1971.....	38	20.9
1972.....	33	17.5
1973.....	24	16.9
1974.....	25	15.9
1975.....	19	16.0
1976.....	14	16.6
1977.....	14	16.9
1978.....	19	18.3
1979.....	17	17.6
1980.....	16	18.0
1981.....	5	19.7
1982.....	4	20.4
1983.....	3	14.6
1984.....	1	13.0
1985.....	2	24.1
Total	234	17.8

Note: Time served computed from effective date of sentence to date of release (parole).

WHAT . . .

- CRIMES WERE COMMITTED?
- IS THE SENTENCE LENGTH?
- IS THE AVERAGE LENGTH OF STAY?

TABLE 27

**COURT COMMITMENTS RECEIVED IN THE DEPARTMENT OF
CORRECTIONS, 1980 TO 1985, BY OFFENSE**

Crime Index Offenses	1980	1981	1982	1983	1984	1985	Total	Percent of Total
Murder								
1st degree	55	72	69	92	91	72	451	1.93
2nd degree	33	44	43	44	38	24	226	0.97
3rd degree	136	158	131	140	158	143	866	3.70
Unspecified	12	22	29	15	21	27	126	0.54
Manslaughter								
Voluntary	53	50	49	50	44	52	298	1.27
Involuntary	27	38	41	50	31	30	217	0.93
Homicide by motor vehicle ..					9	21	30	0.13
Forcible rape	156	130	166	161	195	204	1,012	4.32
Robbery	589	774	808	754	860	726	4,511	19.28
Aggravated assault	194	206	234	267	283	326	1,510	6.45
Burglary	596	776	830	890	873	765	4,730	20.22
Theft-larceny	267	268	356	405	445	429	2,170	9.28
Arson	41	48	43	71	57	59	319	1.36
Total crime index offenses	2,159	2,586	2,799	2,939	3,105	2,878	16,466	70.38
Part II Offenses								
Other assaults	88	100	107	112	108	129	644	2.75
Forgery	62	63	71	101	85	83	465	1.99
Fraud	44	56	59	58	65	38	320	1.37
Receiving stolen property ...	111	133	144	143	150	167	848	3.62
Weapons	34	33	49	48	48	59	271	1.16
Drunken driving	25	23	36	45	64	58	251	1.07
Prison breach	59	43	48	38	54	30	272	1.16
Conspiracy	28	45	57	67	94	89	380	1.62
Kidnapping	17	20	12	20	22	18	109	0.47
Statutory rape	14	14	13	13	22	24	100	0.43
Deviate sexual intercourse ..	37	32	41	63	81	127	381	1.63
Other sex offenses	48	28	37	28	57	49	247	1.06
Narcotic drug laws	202	220	275	286	304	346	1,633	6.98
Other Part II offenses	112	102	95	110	119	133	671	2.87
Total Part II Offenses	881	912	1,044	1,132	1,273	1,350	6,592	28.18
Unknown	43	53	62	51	49	78	336	1.44
Total	3,083	3,551	3,905	4,122	4,427	4,306	23,394	100.00

As defined by the Federal Uniform Crime Reports, 39.5%, of all court commitments to the Department of Corrections during 1980 - 1985 were sentenced for violent crimes (murder, forcible rape, robbery, and aggravated assault). Approximately one of every ten commitments was sentenced for murder and manslaughter.

TABLE 28

**AVERAGE MONTHS SERVED BY INMATES RELEASED FROM
DEPARTMENT OF CORRECTIONS
1980 TO 1985**

Year Released	Maximum Sentences Under Two Years		Maximum Sentences of Two Years and Over		All Sentences	
	Number Paroled	Average Months Served	Number Paroled	Average Months Served	Total Releases*	Average Months Served
1980	691	8.5	1,979	35.5	3,080	27.5
1981	684	9.3	1,933	33.7	2,986	26.7
1982	727	8.3	2,185	33.1	3,271	26.4
1983	745	8.6	2,386	32.2	3,556	26.2
1984	810	8.0	2,479	32.0	3,695	25.7
1985	967	8.5	2,597	34.5	4,067	27.5
Total	4,624	8.5	13,559	33.5	20,665	26.7

*Includes inmates released for other reasons (maxed out, released by court order and etc.) than parole.

Note: Above totals do not include parole violators reparaoled. Since 1981, only a few lifers were commuted and released.

Table 28 shows that the average time served by short-term and long-term inmates paroled since 1980 remained constant. Inmates having maximum sentences under two years averaged only 8.5 months, while those who were given longer sentences of two years and over averaged 33.5 months. Most inmates having maximum sentences under two years were confined in State Regional Correctional Facilities at Greensburg and Mercer.

TABLE 29

**AVERAGE MONTHS SERVED BY INMATES REPAROLED
FROM THE DEPARTMENT OF CORRECTIONS
1980 TO 1985**

	Number Reparoled	Average Months Served
1980	283	11.7
1981	386	12.8
1982	476	13.6
1983	468	14.4
1984	553	15.2
1985	548	16.5

Note: These are parole violators who were recommitted by the Pennsylvania Board of Probation and Parole (PBPP) and reparaoled. Average months served is based on PV effective dates established by the PBPP. PV effective dates for technical violators include street-time and subsequently, the average months served does not reflect actual time in confinement.

The number of reparole cases and the average months they served increased steadily since 1980.

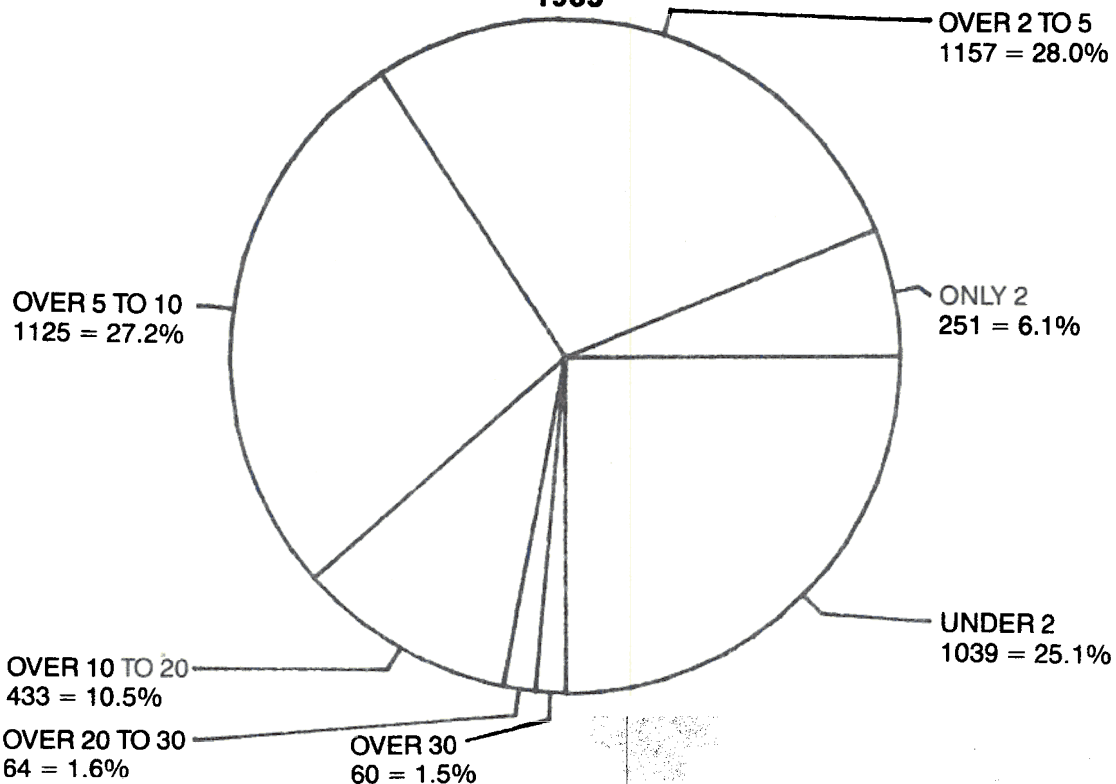
**TABLE 30
COURT COMMITMENTS TO THE DEPARTMENT OF CORRECTIONS
DURING 1985, BY MAXIMUM SENTENCE AND TYPE OF FACILITY**

Maximum Sentence:	State Correctional Institutions		State Regional Correctional Facilities		Total	
	Number	Percent of Total	Number	Percent of Total	Number	Percent of Total
Under 2 years	63	2.1	975	86.9	1,038	25.1
Two years only	132	4.4	119	10.6	251	6.1
Over 2 to 5 years	1,140	37.9	17	1.5	1,157	28.0
Over 5 to 10 years	1,118	37.2	7	0.6	1,125	27.2
Over 10 to 20 years	429	14.3	4	0.4	433	10.5
Over 20 to 30 years	64	2.1	0	0.0	64	1.6
Over 30 to 40 years	29	1.0	0	0.0	29	0.7
Over 40 to 50 years	16	0.5	0	0.0	16	0.4
Over 50 years	15	0.5	0	0.0	15	0.4
Total*	3,006	100.0	1,122	100.0	4,128	100.0
Average max. sentence (yrs)*	8.8		2.2		7.0	

* Does not include lifers, execution cases and federal inmates received in 1985.

Table 30 shows 1985 court commitments to the Department by maximum sentence. Excluding inmates in state regional correctional facilities and lifers, 81.6% committed in 1985 had maximum sentences of ten years or less. Based on current trends most of these inmates will served less than five years before they are paroled.

**TABLE 31
COURT COMMITMENTS BY MAXIMUM SENTENCE
1985**



Excluding lifers, 61.3% of all 1985 court commitments to the Department of Corrections were sentenced to maximum sentences ranging from two to ten years. However, most of these will be paroled when their minimum sentence is served. In Pennsylvania, a minimum sentence can be no more than one-half the maximum but is often less.

TABLE 32

**COURT COMMITMENTS TO THE DEPARTMENT OF CORRECTIONS
DURING 1985, BY MINIMUM SENTENCE AND TYPE OF FACILITY**

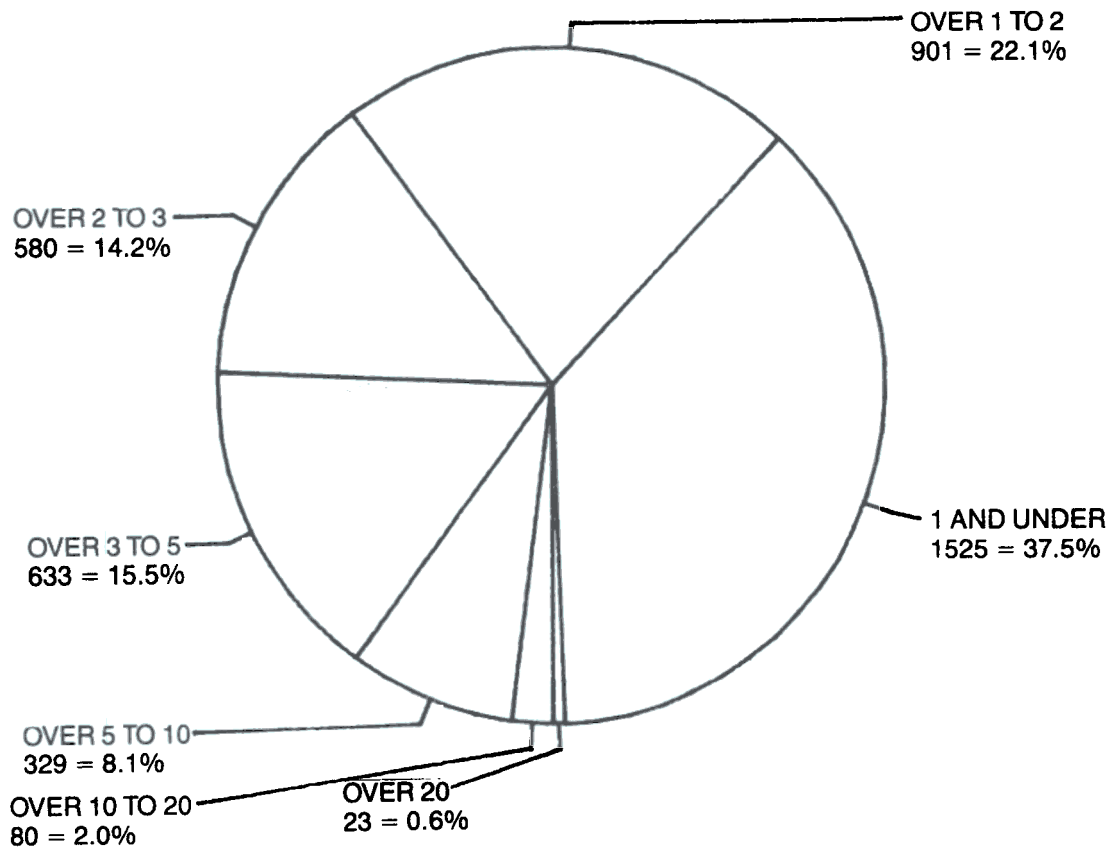
Minimum Sentence:	State Correctional Institutions		State Regional Correctional Facilities		Total	
	Number	Percent of Total	Number	Percent of Total	Number	Percent of Total
1 year and under	431	14.6	1,094	97.4	1,525	37.5
Over 1 to 2 years	887	30.1	14	1.2	901	22.1
Over 2 to 3 years	575	19.5	5	0.5	580	14.2
Over 3 to 5 years	629	21.3	4	0.3	633	15.5
Over 5 to 10 years	324	11.0	5	0.5	329	8.1
Over 10 to 20 years	79	2.7	1	0.1	80	2.0
Over 20 years	23	0.8	0	0.0	23	0.6
Total*	2,948	100.0	1,123	100.0	4,071	100.0
Average min. sentence (yrs). .	3.6		0.8		2.9	

Does not include lifers and other classes of sentences with no minimum term.

Since most inmates in Pennsylvania are paroled at their minimum sentence, the distribution of 1985 court commitments by minimum sentence in Table 32 has a large impact on the Department of Corrections. Based on 1985 commitments, inmates will serve an average of 2.9 years before they are paroled. Excluding State Regional Correctional Facilities, the average minimum sentence was 3.6 years.

TABLE 33

**COURT COMMITMENTS BY MINIMUM SENTENCE
1985**



Based on 1985 court commitments, over one-half (51.8%) of all inmates will serve minimum sentences between one and five years in length.

WHERE . . .

- DO INMATES RECEIVE THEIR SENTENCES?
- ARE THE CORRECTIONAL FACILITIES?

TABLE 34

**TEN HIGHEST COUNTIES COMMITTING INMATES TO
THE DEPARTMENT OF CORRECTIONS**

Rank	County	Inmates Per 100,000 Civilian Population on December 31	
		1980	1985
1	Philadelphia	165.3	319.5
2	Dauphin. . . .	153.2	235.4
3	Erie	86.9	169.5
4	Allegheny . .	78.1	157.5
5	Lycoming . .	78.5	125.6
6	Mercer.	115.5	122.5
7	Crawford . . .	102.4	112.7
8	Clearfield. . .	79.0	108.7
9	York	57.5	107.3
10	Berks.	57.3	103.8

Note: For comparison with other large counties, the above ranking does not include 7th and 8th class counties. Ranking is based on ratio of inmates per population on December 31, 1985.

Table 34 provides a comparison of the ratio of inmates per civilian population on December 31, 1980 and 1985 for the ten highest counties. In all cases, ratios increased considerably from 1980 to 1985, influenced more by the increase in inmate population than change in civilian population over the same period.

TABLE 35
**COURT COMMITMENTS RECEIVED IN STATE
CORRECTIONAL INSTITUTIONS, 1980 TO 1985**

Counties	1980	1981	1982	1983	1984	1985	Total	Percent of Total
Adams	5	16	9	7	9	3	49	0.28%
Allegheny	249	270	272	350	425	428	1,994	11.32%
Armstrong	6	13	4	13	7	3	46	0.26%
Beaver	24	22	23	19	25	23	136	0.77%
Bedford	4	2	3	8	2	0	19	0.11%
Berks	58	69	95	109	122	68	521	2.96%
Blair	17	7	25	20	20	12	101	0.57%
Bradford	4	6	3	9	8	11	41	0.23%
Bucks	43	54	81	67	69	88	402	2.28%
Butler	22	10	18	15	17	15	97	0.55%
Cambria	10	22	22	16	21	20	111	0.63%
Cameron	2	0	2	1	1	0	6	0.03%
Carbon	3	6	6	5	5	10	35	0.20%
Centre	13	9	16	14	10	19	81	0.46%
Chester	32	46	37	31	48	34	228	1.29%
Clarion	0	3	0	2	3	8	16	0.09%
Clearfield	16	15	12	17	21	22	103	0.58%
Clinton	14	15	13	18	12	11	83	0.47%
Columbia	10	19	12	8	10	3	62	0.35%
Crawford	25	30	22	30	24	28	159	0.90%
Cumberland	22	30	28	26	24	25	155	0.88%
Dauphin	83	141	143	96	111	109	683	3.88%
Delaware	51	79	100	97	63	72	462	2.62%
Elk	2	0	2	5	7	7	23	0.13%
Erie	80	74	91	113	83	94	535	3.04%
Fayette	24	29	35	28	41	30	187	1.06%
Forest	2	2	4	1	0	2	11	0.06%
Franklin	16	27	22	19	13	13	110	0.62%
Fulton	0	5	5	4	2	4	20	0.11%
Greene	12	7	7	10	11	15	62	0.35%
Huntingdon	3	7	13	4	12	5	44	0.25%
Indiana	4	6	4	7	12	9	42	0.24%
Jefferson	1	0	3	4	3	1	12	0.07%
Juniata	2	5	2	3	7	1	20	0.11%
Lackawanna	18	38	43	50	57	58	264	1.50%
Lancaster	79	51	66	66	68	59	389	2.21%
Lawrence	7	22	20	17	15	12	93	0.53%
Lebanon	13	7	17	16	27	25	105	0.60%
Lehigh	27	25	21	23	31	24	151	0.86%
Luzerne	28	31	36	31	25	27	178	1.01%
Lycoming	48	56	48	67	38	40	297	1.69%
McKean	1	6	6	16	4	3	36	0.20%
Mercer	39	25	31	31	27	24	177	1.00%
Mifflin	10	20	13	4	19	14	80	0.45%
Monroe	8	6	14	7	18	19	72	0.41%
Montgomery	166	201	210	177	147	148	1,049	5.96%
Montour	1	1	3	4	3	3	15	0.09%
Northampton	10	39	46	35	27	24	181	1.03%
Northumberland	36	25	33	24	26	24	168	0.95%
Perry	4	6	9	21	9	9	58	0.33%
Philadelphia	640	834	1,041	1,198	1,244	1,166	6,123	34.76%
Pike	3	3	8	6	10	5	35	0.20%
Potter	6	1	3	1	4	3	18	0.10%
Schuylkill	7	7	9	15	10	7	55	0.31%
Snyder	4	5	2	5	9	10	35	0.20%
Somerset	18	15	13	16	19	5	86	0.49%
Sullivan	2	1	1	0	1	1	6	0.03%
Susquehanna	2	9	6	7	5	4	33	0.19%
Tioga	14	30	32	26	30	16	148	0.84%
Union	8	4	9	6	7	7	41	0.23%
Venango	8	8	8	3	13	6	46	0.26%
Warren	6	17	7	9	6	9	54	0.31%
Washington	18	24	17	23	25	13	120	0.68%
Wayne	5	5	9	15	8	5	47	0.27%
Westmoreland	19	34	18	31	38	41	181	1.03%
Wyoming	7	10	8	7	19	16	67	0.38%
York	42	51	73	71	67	121	425	2.41%
Others	43	11	18	15	12	27	126	0.72%
Total	2,206	2,674	3,032	3,219	3,316	3,168	17,615	100.00%

Note: This table does not include court commitments to the State Regional Correctional Facilities at Greensburg and Mercer.

TABLE 36

**TEN HIGHEST COUNTIES COMMITTING INMATES TO STATE
CORRECTIONAL INSTITUTIONS, 1980 TO 1985**

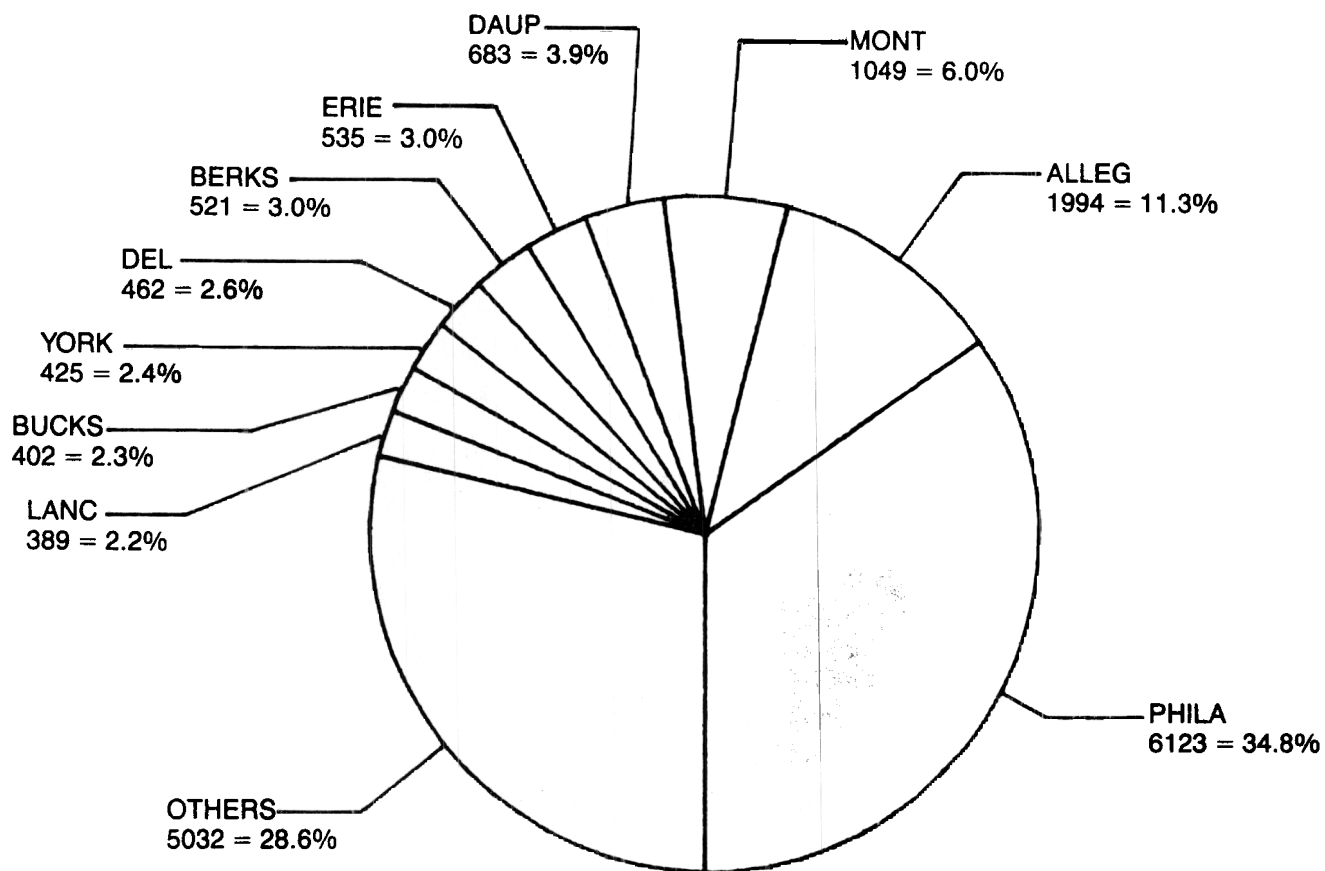
Rank	County	1980 to 1985 Total	Percent of State Total
1	Philadelphia	6,123	34.8%
2	Allegheny	1,994	11.3%
3	Montgomery	1,049	6.0%
4	Dauphin	683	3.9%
5	Erie	535	3.0%
6	Berks	521	2.9%
7	Delaware	462	2.6%
8	York	425	2.4%
9	Bucks	402	2.3%
10	Lancaster	389	2.2%
	Sub-total	12,583	71.4%
	Remaining Counties	5,032	28.6%
	State Total	17,615	100.0%

Note: This summary table does not include court commitments to State Regional Correctional Facilities at Greensburg and Mercer.

The list of the ten counties who contributed the largest number of inmates for the period is provided above. These ten most densely populated counties account for 71.4% of the inmates received from 1980 - 1985.

TABLE 37

**COMMITMENTS BY COUNTY
1980 TO 1985**



Note: This chart does not include court commitments to State Regional Correctional Facilities at Greensburg and Mercer.

The above chart shows the ten major contributors of court commitments to the eight state correctional institutions within the Pennsylvania Department of Corrections during 1980 to 1985.

TABLE 38
**1985 ADMISSIONS TO THE DEPARTMENT OF
CORRECTIONS BY COMMITTING COUNTY**

Counties	Court Commitments			Parole Violators			County Prison Transfers	Total Admissions	Percent of Total
	State corr. Institutions	Regional corr. Facilities	Total	State	County	Total			
Adams	3	0	3	8	0	8	0	11	0.18%
Allegheny	428	598	1,026	282	30	312	0	1,338	22.46%
Armstrong	3	7	10	2	0	2	0	12	0.20%
Beaver	23	17	40	20	0	20	0	60	1.01%
Bedford	0	0	0	1	0	1	0	1	0.02%
Berks	68	0	68	38	0	38	1	106	1.78%
Blair	12	0	12	9	0	9	0	21	0.35%
Bradford	11	0	11	3	0	3	0	14	0.24%
Bucks	88	0	88	15	0	15	12	103	1.73%
Butler	15	13	28	4	1	5	0	33	0.55%
Cambria	20	0	20	7	0	7	0	27	0.45%
Cameron	0	0	0	0	1	1	0	1	0.02%
Carbon	10	0	10	1	0	1	3	11	0.18%
Centre	19	0	19	5	0	5	0	24	0.40%
Chester	34	0	34	20	0	20	0	54	0.91%
Clarion	8	13	21	2	7	9	0	30	0.50%
Clearfield	22	26	48	6	2	8	0	56	0.94%
Clinton	11	0	11	4	0	4	0	15	0.25%
Columbia	3	0	3	2	0	2	0	5	0.08%
Crawford	28	16	44	14	0	14	0	58	0.97%
Cumberland	25	0	25	19	0	19	0	44	0.74%
Dauphin	109	0	109	88	0	88	0	197	3.31%
Delaware	72	0	72	24	0	24	0	96	1.61%
Elk	7	8	15	2	1	3	0	18	0.30%
Erie	94	109	203	57	17	74	0	277	4.65%
Fayette	30	45	75	20	0	20	0	95	1.59%
Forest	2	2	4	1	0	1	0	5	0.08%
Franklin	13	0	13	12	0	12	0	25	0.42%
Fulton	4	0	4	0	0	0	0	4	0.07%
Greene	15	11	26	6	0	6	0	32	0.54%
Huntingdon	5	0	5	4	0	4	0	9	0.15%
Indiana	9	10	19	4	0	4	0	23	0.39%
Jefferson	1	4	5	3	0	3	0	8	0.13%
Juniata	1	0	1	1	0	1	0	2	0.03%
Lackawanna	58	0	58	15	0	15	0	73	1.23%
Lancaster	59	0	59	31	0	31	0	90	1.51%
Lawrence	12	26	38	9	1	10	1	48	0.81%
Lebanon	25	0	25	8	0	8	0	33	0.55%
Lehigh	24	0	24	14	0	14	1	38	0.64%
Luzerne	27	0	27	15	0	15	3	42	0.71%
Lycoming	40	0	40	32	0	32	0	72	1.21%
McKean	3	14	17	4	1	5	0	22	0.37%
Mercer	24	61	85	19	4	23	0	108	1.81%
Mifflin	14	0	14	7	0	7	0	21	0.35%
Monroe	19	0	19	3	0	3	0	22	0.37%
Montgomery	148	0	148	90	0	80	0	228	3.83%
Montour	3	0	3	1	0	1	0	4	0.07%
Northampton	24	0	24	1	0	1	0	25	0.42%
Northumberland	24	0	24	10	0	10	0	34	0.57%
Perry	9	0	9	5	0	5	0	14	0.24%
Philadelphia	1,166	0	1,166	554	0	554	0	1,720	28.87%
Pike	5	0	5	0	0	0	0	5	0.08%
Potter	3	0	3	0	2	2	0	5	0.08%
Schuylkill	7	0	7	1	0	1	0	8	0.13%
Snyder	10	0	10	2	0	2	0	12	0.20%
Somerset	5	0	5	8	0	8	0	13	0.22%
Sullivan	1	0	1	0	0	0	0	1	0.02%
Susquehanna	4	0	4	1	0	1	0	5	0.08%
Tioga	16	0	16	2	0	2	0	18	0.30%
Union	7	0	7	2	0	2	0	9	0.15%
Venango	6	16	22	7	0	7	0	29	0.49%
Warren	9	6	15	2	1	3	0	18	0.30%
Washington	13	20	33	6	0	6	0	39	0.65%
Wayne	5	0	5	2	0	2	0	7	0.12%
Westmoreland	41	111	152	15	1	16	0	168	2.82%
Wyoming	16	0	16	4	0	4	0	20	0.34%
York	121	0	121	38	0	38	0	159	2.67%
Other	27	5	32	0	0	0	0	32	0.54%
Total	3,168	1,138	4,306	1,582	69	1,651	26	5,957	100.00%

Table 38 shows all major admissions to the Pennsylvania Department of Corrections during 1985 by committing county and type of admission. If more than one county is involved because of multiple sentences, the county with the predominate sentence is used at time of reception. The percent distribution is based on total admissions.

During 1985, 51.3% of total admissions were from two counties, Philadelphia (28.9%) and Allegheny (22.4%). Returned parole violators represented 27.7% of total admissions!

TABLE 40

**TEN HIGHEST COUNTIES COMMITTING INMATES TO STATE
REGIONAL CORRECTIONAL FACILITIES, 1980 TO 1985**

Rank	County	1980 to 1985 Total	Percent of State Total
1	Allegheny	2,685	46.4%
2	Westmoreland	575	10.0%
3	Erie	498	8.6%
4	Mercer	291	5.0%
5	Fayette	214	3.7%
6	Washington	177	3.1%
7	Lawrence	176	3.0%
8	Butler	139	2.4%
9	Crawford	131	2.3%
10	Beaver	128	2.2%
	Sub-total	5,014	86.7%
	Remaining counties	766	13.3%
	State total	5,780	100.0%

Note: Only counties located within Common Human Services Regions 5 and 6 commit short-term commitments to Greensburg and Mercer.

The above table summarizes the ten highest counties committing short-term inmates to the two state regional correctional facilities located in Greensburg and Mercer. Greensburg was used primarily by Allegheny and Westmoreland Counties while Mercer was used primarily by Erie and Mercer Counties. Short-term inmates represent those serving maximum sentences of two years or less.

TABLE 41

**COURT COMMITMENTS RECEIVED IN STATE REGIONAL
CORRECTIONAL FACILITIES FROM 1980 TO 1985
BY COMMITTING COUNTY**

County	1980	1981	1982	1983	1984	1985	Total	Percent of Total
Allegheny	346	350	391	433	567	598	2,685	46.45
Armstrong	11	8	1	10	0	7	37	0.64
Beaver	26	31	21	24	9	17	128	2.21
Butler	22	27	33	19	25	13	139	2.40
Cameron	2	3	5	6	4	0	20	0.35
Clarion	19	5	5	14	14	13	70	1.21
Clearfield	23	13	16	18	19	26	115	1.99
Crawford	23	28	34	23	7	16	131	2.27
Elk	4	10	5	9	7	8	43	0.74
Erie	58	89	93	65	84	109	498	8.62
Fayette	47	28	28	27	39	45	214	3.70
Forest	4	4	6	2	3	2	21	0.36
Greene	11	10	5	5	2	11	44	0.76
Indiana	4	9	4	13	13	10	53	0.92
Jefferson	19	8	7	2	5	4	45	0.78
Lawrence	18	31	30	23	48	26	176	3.04
McKean	4	4	14	10	9	14	55	0.95
Mercer	53	45	39	46	47	61	291	5.03
Potter	6	16	11	9	8	0	50	0.87
Venango	19	15	20	17	30	16	117	2.02
Warren	8	22	9	8	18	6	71	1.23
Washington	41	42	21	23	30	20	177	3.06
Westmoreland	97	77	74	96	120	111	575	9.95
Others	12	2	1	1	4	5	25	0.43
Total	877	877	873	903	1,112	1,138	5,780	100.00

During the period of this report, twelve of twenty-three counties committed over one hundred short-term inmates to State Regional Correctional Facilities at Greensburg and Mercer. Commitments from Allegheny County increased substantially during 1984 and 1985 because their local county prison was under Federal Court Order to keep their inmate population within the maximum level set by this court.

TABLE 42

**PENNSYLVANIA DEPARTMENT OF CORRECTIONS
LOCATION OF INSTITUTIONS**

