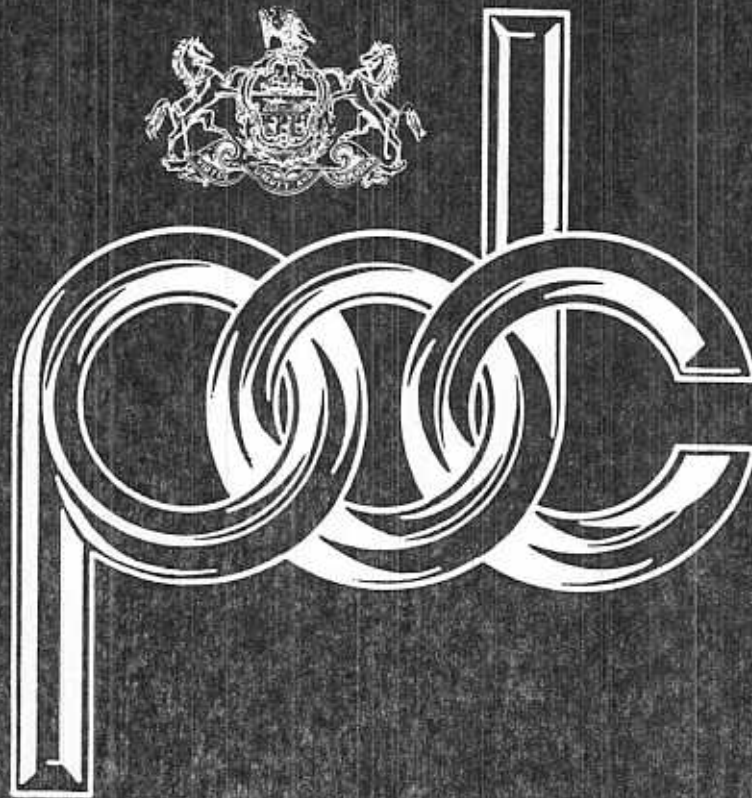


Commonwealth of Pennsylvania

Department of Corrections



Annual Statistical Report
1988 & 1989

ROBERT P. CASEY
Governor

JOSEPH D. LEHMAN
Commissioner

ROBERT P. CASEY
Governor

JOSEPH D. LEHMAN
Commissioner



**1988/1989 ANNUAL STATISTICAL REPORT
STATE CORRECTIONAL SYSTEM**

PREPARED BY:

Planning, Research, and Statistics Office
Department of Corrections

PREFACE

From 1980 to 1989, the number of offenders incarcerated in the Pennsylvania Department of Corrections has increased by nearly 150%. This report presents statistical data compiled by the Department in an effort to provide some understanding of the causes and effects of this unprecedented growth in prison population.

In general, this report includes the new data available for 1988 and 1989. The report also provides historical data back to 1980 to profile the changes that have occurred.

In June of 1989, the Department implemented a new Inmate Records System. Once the potential benefit of this new system is realized, our ability to provide pertinent data will be significantly enhanced. However, the conversion to this new system and the reconciliation with the old system have limited our ability to provide some detailed information for 1989.

The Department's continuing efforts to develop better information systems are designed to provide corrections administrators and policymakers with the information they will need to plan for the future. The dramatic growth of prison population in the 1980's and problems experienced in accommodating that growth have made clear the need for better information.

We hope you will find the information in this report useful and that it leads to a better understanding of the Department's present situation.

Sincerely,



Joseph D. Lehman
Joseph D. Lehman
Commissioner

Table of Contents

SECTION	PAGE #
PREFACE	
TABLE OF CONTENTS	ii
FIGURES	iii
TABLES	iv
<hr/>	
SECTION 1: RECEPTIONS	
Major Types of Receptions	1
Reception Trends	1
Court Commitments by County	3
Court Commitments by Age, Race, & Sex	5
Court Commitments by Offense	7
Court Commitments by Minimum Sentence	8
Court Commitments by Maximum Sentence	8
Lifers Received	9
<hr/>	
SECTION 2: POPULATION	
General Trends	10
Population by County	10
Population Versus Capacity	13
Month-End Populations	14
Population by Sex	15
Population by Age	15
Incarceration Status	16
Population by Offense	17
Inmate Profile	19
Long-Term Inmates	20
Inmates Serving Life	20
Inmates Under Death Sentence	22
<hr/>	
SECTION 3: DISCHARGES	
Types of Discharges	23
Unconditional Discharges	23
Conditional Discharges	23
Other Discharges	24
Paroling Actions	24
Time Served	25
Lifers Discharged	26
<hr/>	
SECTION 4: MISCELLANEOUS	
Escapes	27
Personnel Complement	28

FIGURES

FIGURE #		PAGE #
1	Court Commitments & Parole Violators Returned, 1980 to 1989	1
2	Court Commitments by Major Contributing Counties, 1989	3
3	Court Commitments by Age Group, 1980 versus 1989	5
4	Incarceration Rates for the Top Ten Counties, 1980 versus 1988	11
5	Inmate Population Versus Capacity, December 31, 1980 to 1989	13
6	Month-End Inmate Population as a Percent of January 1980 Population, 1980, 1985, & 1989	14
7	Inmate Status as of Year-End, 1980 to 1989	16
8	Parole Board Decisions on Department Inmates, 1980 to 1989	24
9	Average Time Served by Inmates Discharged, 1980 to 1988	25

TABLES

TABLE #		PAGE #
1	Receptions, 1980 to 1989 by Sex	1
2	1989 Receptions by Committing County	2
3	Ten Counties with Highest Commitment Activity, 1980 to 1989	3
4	Court Commitments by Committing County, 1980 to 1989	4
5	Court Commitments by Age, 1980 to 1989	5
6	Profile of Court Commitments Received by Age, Race, & Sex, 1980	6
7	Profile of Court Commitments Received by Age, Race, & Sex, 1989	6
8	Court Commitments by Offense, 1980 to 1989	7
9	1989 Court Commitments by Minimum Sentence & Sex	8
10	1989 Court Commitments by Maximum Sentence & Sex	8
11	Profile of Lifers Received, 1980 to 1989	9
12	Comparison of Civilian & Inmate Populations, 1975 to 1989	10
13	Incarceration Rates for the Top Ten Committing Counties, 1980 & 1988	11
14	Inmates on December 31, 1980, 1988, & 1989 by Committing County & Sex	12
15	Inmate Population Versus Capacity on December 31, 1980 to 1989	13
16	Month-End Populations, January 1980 to December 1989	14
17	Inmate Population on December 31, 1980 by Facility, Race, Sex, & Age	15
18	Inmate Population on December 31, 1989 by Facility, Race, Sex, & Age	15
19	Status of Inmates on December 31, 1980 to 1989	16
20	Inmates by Offense on December 31, 1980 & 1988	17
21	Inmates by Offense & Age on December 31, 1980 & 1988	18
22	Profile Comparison of Inmates on December 31, 1980 & 1989	19
23	Long-Term Inmates on December 31, 1980 to 1989	20
24	Number of Inmates Serving Life by Institution on December 31, 1980 & 1989	20
25	Ten Highest Counties with Inmates Serving Life on December 31, 1980 to 1988	21
26	Age of Inmates Serving a Life Sentence on December 21, 1980 & 1988	21
27	Time Served by Lifers on December 31, 1980 to 1988	22
28	Profile of Inmates Under Sentence of Death on December 31, 1989	22
29	Discharges by Type, 1980 to 1989	23
30	Paroling Actions by the Pennsylvania Board of Probation & Parole, 1980 to 1989	24
31	Average Months Served by Inmates Discharged, 1980 to 1988	25
32	Lifers Discharged, 1980 to 1989	26
33	Number of Escapes by Facility & Type, 1980 to 1989	27
34	Complement Control Report by Location, December 31, 1989	28

SECTION

1

RECEPTIONS

Major Types of Receptions

Presented in Tables 1 and 2, are the three major types of receptions to the Pennsylvania Department of Corrections(DOC). Receptions include (1) court commitments, defendants convicted and sentenced to state correctional facilities by criminal courts; (2) parole violators returned by state and local paroling authorities; and (3) county prison transfers. The demographic data in this report are based on court commitments.

Reception Trends

As shown in Table 1, total receptions have doubled (+104.3%) since 1980; female receptions increased 188% and male receptions 99%. Figure 1 compares the growth of the two major reception groups, court commitments and parole violators, from 1980 to 1989. In 1989, parole violators represented 31.1% total receptions, compared to 20.3% in 1980. Because of overcrowding, the number of county prison transfers accepted by the DOC have been kept at a minimum in recent years. The dramatic increase seen in court commitments in 1989 is most likely the result of new (1988 & 1989) mandatory sentences and increased enforcement measures aimed at drug offenders.

TABLE 1: Receptions in the Department of Corrections, 1980 to 1989 by Sex

	Court Commitments		Parole Violators		County Transfers		Total Receptions
	Male	Female	Male	Female	Male	Female	
1980	2,920	163	778	28	75	9	3,964
1981	3,359	192	1,134	37	45	6	4,767
1982	3,645	260	1,197	27	38	2	5,167
1983	3,880	242	1,363	34	40	3	5,559
1984	4,159	269	1,363	51	32	4	5,874
1985	4,073	233	1,612	39	26	1	5,983
1986	3,833	312	1,756	48	16	4	5,963
1987	3,555	290	2,043	65	21	5	5,974
1988	3,830	340	2,472	98	23	3	6,763
1989	5,086	491	2,435	85	3	0	8,100

FIGURE 1: COURT COMMITMENTS AND PAROLE VIOLATORS RETURNED, 1980 to 1989

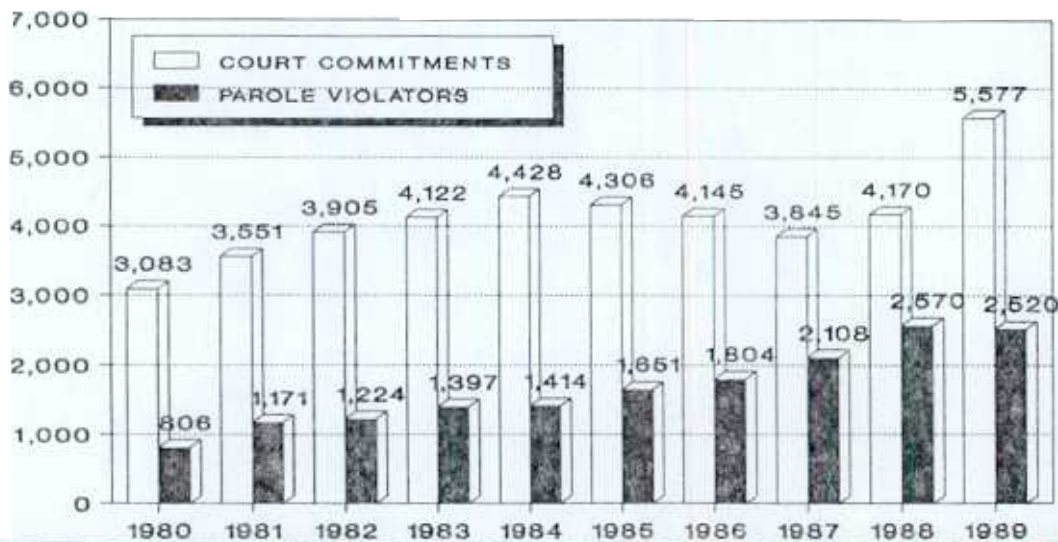


TABLE 2: 1989 Receptions to the Department of Corrections by Committing County

COUNTY	Court Commitments	Parole Violators	County Prison Transfers	Total Receptions	Percent of Total
Adams	11	6	0	17	0.22
Allegheny	866	359	0	1,225	16.05
Armstrong	10	5	0	15	0.20
Beaver	52	17	0	69	0.90
Bedford	8	0	0	8	0.10
Berks	282	57	0	339	4.44
Blair	21	12	0	33	0.43
Bradford	14	1	0	15	0.20
Bucks	101	38	1	140	1.83
Butler	46	4	0	50	0.66
Cambria	22	7	0	29	0.38
Cameron	1	0	0	1	0.01
Carbon	6	7	0	13	0.17
Centre	28	5	1	34	0.45
Chester	71	27	0	98	1.28
Clarion	1	2	0	3	0.04
Clearfield	49	14	0	63	0.83
Clinton	22	8	0	30	0.39
Columbia	18	5	0	23	0.30
Crawford	29	13	0	42	0.55
Cumberland	49	26	0	75	0.98
Dauphin	162	60	0	222	2.91
Delaware	147	41	0	188	2.46
Elk	19	1	0	20	0.26
Erie	250	81	0	331	4.34
Fayette	60	17	0	77	1.01
Forest	0	0	0	0	0.00
Franklin	52	11	0	63	0.83
Fulton	10	2	0	12	0.16
Greene	26	4	0	30	0.39
Huntingdon	10	2	0	12	0.16
Indiana	19	3	0	22	0.29
Jefferson	5	5	0	10	0.13
Juniata	3	4	0	7	0.09
Lackawanna	60	27	0	87	1.14
Lancaster	112	49	0	161	2.11
Lawrence	88	11	0	99	1.30
Lebanon	49	22	1	72	0.94
Lehigh	104	21	0	125	1.64
Luzerne	22	17	0	39	0.51
Lycoming	91	23	0	114	1.49
McKean	16	1	0	17	0.22
Mercer	86	19	0	105	1.38
Mifflin	28	2	0	30	0.39
Monroe	20	3	0	23	0.30
Montgomery	173	122	0	295	3.87
Montour	7	1	0	8	0.10
Northampton	34	15	0	49	0.64
Northumberland	45	9	0	54	0.71
Perry	17	4	0	21	0.28
Philadelphia	1,690	741	0	2,431	31.85
Pike	12	1	0	13	0.17
Potter	10	0	0	10	0.13
Schuylkill	23	5	0	28	0.37
Snyder	11	2	0	13	0.17
Somerset	14	5	0	19	0.25
Sullivan	1	0	0	1	0.01
Susquehanna	15	3	0	18	0.24
Tioga	22	8	0	30	0.39
Union	8	3	0	11	0.14
Venango	24	6	0	30	0.39
Warren	17	1	0	18	0.24
Washington	41	12	0	53	0.69
Wayne	16	2	0	18	0.24
Westmoreland	66	19	0	85	1.11
Wyoming	2	7	0	9	0.12
York	182	45	0	227	2.97
Other	1	2	0	3	0.04
Unknown	0	468	0	468	
TOTAL	5,577	2,520	3	8,100	100.00

Court Commitments by County

Table 4 shows the trend in court commitments by county since 1980. The reclassification of the Regional Correctional Facility at Greensburg to a State Correctional Institution in 1985 and the cap on new admissions to the Regional Correctional Facility at Mercer (1986 on) resulted in a reduction in court commitments from some of the Western counties. Regional facilities accept sentenced prisoners with maximum sentences of less than 2 years, whereas State Correctional Institutions normally accept only sentenced prisoners with maximum sentences of 2 or more years. Nearly half of the court commitments came from the state's two most populous counties, Philadelphia (27.80%) and Allegheny (18.75%). Court commitments from Philadelphia County increased 164% since 1980. During the 1980's, 41,132 court commitments were received in the DOC. Nearly 70% came from ten counties (see Table 3). Figure 2 shows the distribution of court commitments from the top ten committing counties in 1989.

TABLE 3: Ten Counties with Highest Commitment Activity to the DOC, 1980 to 1989

County	1980-1989 Average	Percent of State Total
Philadelphia	1,143	27.79
Allegheny *	771	18.75
Erie *	196	4.77
Montgomery	158	3.84
Dauphin	119	2.89
Berks	108	2.63
Westmoreland *	107	2.60
York	87	2.12
Delaware	86	2.09
Mercer *	77	1.87
SUBTOTAL	2,852	69.30
Remaining Counties	1,261	30.70
STATE TOTAL	4,113	100.00

* Includes commitments to regional correctional facilities at Greensburg and Mercer.

FIGURE 2: COURT COMMITMENTS BY MAJOR CONTRIBUTING COUNTIES 1989

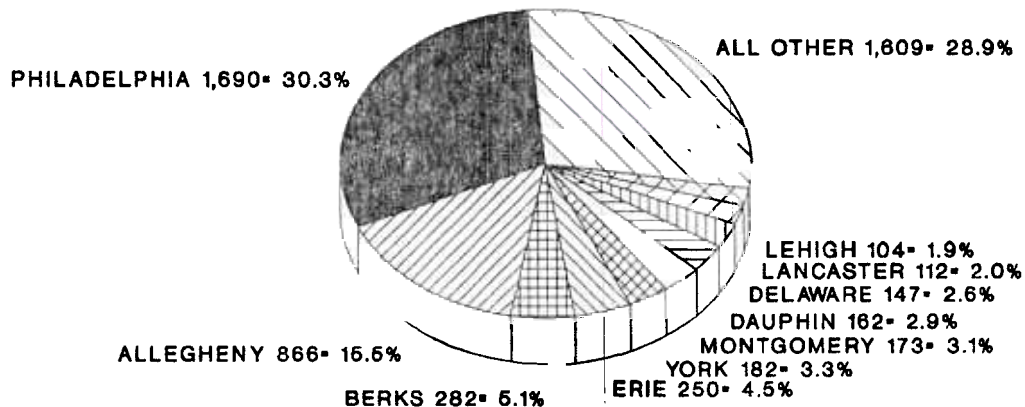


TABLE 4: Court Commitments Received in the Department of Corrections, 1980 to 1989 by Committing County

COUNTY	1980	1981	1982	1983	1984	1985	1986	1987	1988	1989	Average	% of Total
Adams	5	16	9	7	9	3	15	15	13	11	10.3	0.25
Allegheny *	595	620	663	783	992	1,026	820	669	679	866	771.3	18.75
Armstrong *	17	21	5	23	7	10	8	9	6	10	11.6	0.28
Beaver *	50	53	44	43	34	40	27	31	27	52	40.1	0.97
Bedford	4	2	3	8	2	0	3	2	0	8	3.2	0.08
Berks	58	69	95	109	122	68	64	77	139	282	108.3	2.63
Blair	17	7	25	20	20	12	24	36	25	21	20.7	0.50
Bradford	4	6	3	9	8	11	7	11	7	14	8.0	0.19
Bucks	43	54	81	67	69	88	85	74	79	101	74.1	1.80
Butler *	44	37	51	34	42	28	25	25	10	46	34.2	0.83
Cambria	10	22	22	16	21	20	11	21	9	22	17.4	0.42
Cameron *	4	3	7	7	5	0	4	2	1	1	3.4	0.08
Carbon	3	6	6	5	5	10	11	12	8	6	7.2	0.18
Centre	13	9	16	14	10	19	18	10	22	28	15.9	0.39
Chester	32	46	37	31	48	34	38	45	62	71	44.4	1.08
Clarion *	19	8	5	16	17	21	9	4	13	1	11.3	0.27
Clearfield *	39	28	28	35	40	48	45	27	18	49	35.7	0.87
Clinton	14	15	13	18	12	11	16	20	10	22	15.1	0.37
Columbia	10	19	12	8	10	3	11	6	9	18	10.6	0.26
Crawford *	48	58	56	53	31	44	43	49	29	29	44.0	1.07
Cumberland	22	30	28	26	24	25	31	47	26	49	30.8	0.75
Dauphin	83	141	143	96	111	109	117	106	120	162	118.8	2.89
Delaware	51	79	100	97	63	72	63	83	107	147	86.2	2.10
Elk *	6	10	7	14	14	15	5	8	9	19	10.7	0.26
Erie *	138	163	184	178	167	203	289	180	205	250	195.7	4.76
Fayette *	71	57	63	55	80	75	71	36	58	60	62.6	1.52
Forest *	6	6	10	3	3	4	3	4	8	0	4.7	0.11
Franklin	16	27	22	19	13	13	21	39	40	52	26.2	0.64
Fulton	0	5	5	4	2	4	12	8	6	10	5.6	0.14
Greene	23	17	12	15	13	26	23	14	18	26	18.7	0.45
Huntingdon	3	7	13	4	12	5	5	10	5	10	7.4	0.18
Indiana	8	15	8	20	25	19	14	14	14	19	15.6	0.38
Jefferson	20	8	10	6	8	5	7	4	8	5	8.1	0.20
Juniata	2	5	2	3	7	1	13	5	1	3	4.2	0.10
Lackawanna	18	38	43	50	57	58	49	58	54	60	48.5	1.18
Lancaster	79	51	66	66	68	59	67	77	75	112	72.0	1.75
Lawrence *	25	53	50	40	63	38	38	37	38	88	47.0	1.14
Lebanon	13	7	17	16	27	25	34	39	37	49	26.4	0.64
Lehigh	27	25	21	23	31	24	59	58	62	104	43.4	1.06
Luzerne	28	31	36	31	25	27	28	13	8	22	24.9	0.61
Lycoming	48	56	48	67	38	40	64	52	69	91	57.3	1.39
McKean *	5	10	20	26	13	17	10	9	11	16	13.7	0.33
Mercer *	92	70	70	77	74	85	91	69	59	86	77.3	1.88
Mifflin	10	20	13	4	19	14	12	10	10	28	14.0	0.34
Monroe	8	6	14	7	18	19	12	24	12	20	14.0	0.34
Montgomery	166	201	210	177	147	148	100	123	135	173	158.0	3.84
Montour	1	1	3	4	3	3	1	2	6	7	3.1	0.08
Northampton	10	39	46	35	27	24	20	38	32	34	30.5	0.74
Northumberland	36	25	33	24	26	24	32	50	45	45	34.0	0.83
Perry	4	6	9	21	9	9	12	10	17	17	11.4	0.28
Philadelphia	640	834	1,041	1,198	1,244	1,166	1,163	1,155	1,302	1,690	1,143.3	27.80
Pike	3	3	8	6	10	5	11	18	22	12	9.8	0.24
Potter *	12	17	14	10	12	3	6	3	1	10	8.8	0.21
Schuylkill	7	7	9	15	10	7	16	11	9	23	11.4	0.28
Snyder	4	5	2	5	9	10	6	14	8	11	7.4	0.18
Somerset	18	15	13	16	19	5	11	7	17	14	13.5	0.33
Sullivan	2	1	1	0	1	1	0	2	0	1	0.9	0.02
Susquehanna	2	9	6	7	5	4	7	6	12	15	7.3	0.18
Tioga	14	30	32	26	30	16	29	37	30	22	26.6	0.65
Union	8	4	9	6	7	7	7	6	12	8	7.4	0.18
Venango *	27	23	28	20	43	22	14	17	20	24	23.8	0.58
Warren *	14	39	16	17	24	15	11	17	20	17	19.0	0.46
Washington *	59	66	38	46	55	33	37	30	30	41	43.5	1.06
Wayne	5	5	9	15	8	5	13	9	11	16	9.6	0.23
Westmoreland *	116	111	92	127	158	152	134	48	71	66	107.5	2.61
Wyoming	7	10	8	7	19	16	5	5	8	2	8.7	0.21
York	42	51	73	71	67	121	71	70	119	182	86.7	2.11
Other *	55	13	19	16	16	32	17	18	17	1	20.4	0.50
TOTAL	3,083	3,551	3,905	4,122	4,428	4,306	4,145	3,845	4,170	5,577	4,113.2	100.00

* Includes commitments to Regional Facilities from 1980 to 1986.

Court Commitments by Age, Race, and Sex

Tables 5, 6, and 7 show court commitments by age, race, and sex during the decade. Since 1980, both the median and average age increased about 3 years. The number of commitments in each age group increased, but the portion under age 25 decreased from 46.4% to 30.2% while the portion of those 40 and over increased from 10.0% to 15.3% since 1980. Figure 3 compares the age distribution of commitments in 1980 to 1989. Tables 6 and 7 also show that the percent of commitments attributable to whites and to males have decreased. This shift is accompanied by an increase in the percent of commitments attributable to non-whites and females. Overall, commitments in each race and sex group increased, but commitments of non-whites and females grew at a greater rate.

**TABLE 5: Court Commitments Received in the Department of Corrections
1980 to 1989 by Age**

Age	1980	1981	1982	1983	1984	1985	1986	1987	1988	1989
Under 18.....	40	53	78	41	31	27	24	24	28	20
18 to 20.....	547	660	632	647	631	566	493	397	449	506
21 to 24.....	827	964	1,062	1,066	1,125	1,015	930	807	848	1,146
25 to 29.....	715	801	890	985	1,054	1,011	924	917	1,011	1,341
30 to 34.....	407	484	561	614	732	716	716	659	754	1,036
35 to 39.....	203	229	310	340	390	424	466	448	445	634
40 to 44.....	127	125	163	181	190	194	252	245	261	409
45 to 49.....	87	77	80	79	94	123	123	152	156	218
50 to 54.....	42	41	43	61	54	63	67	63	74	99
55 to 59.....	34	27	19	36	36	58	44	37	48	56
60 to 64.....	12	19	13	18	23	26	32	30	24	39
65 and over....	4	10	3	5	17	14	10	16	16	26
Unknown.....	38	61	51	49	51	69	64	50	56	47
Total.....	3,083	3,551	3,905	4,122	4,428	4,306	4,145	3,845	4,170	5,577
Median.....	25.8	25.4	24.9	26.4	26.9	27.5	28.0	28.6	28.8	29.1
Average.....	28.1	27.7	27.9	28.4	28.3	29.5	30.1	30.6	30.5	31.0
% under 25.....	46.4	48.1	46.0	43.1	40.8	38.0	35.5	32.4	32.2	30.2
% 40 and over..	10.1	8.6	8.3	9.3	9.5	11.3	12.9	14.3	14.1	15.3

**FIGURE 3: COURT COMMITMENTS BY AGE GROUP
1980 versus 1989**

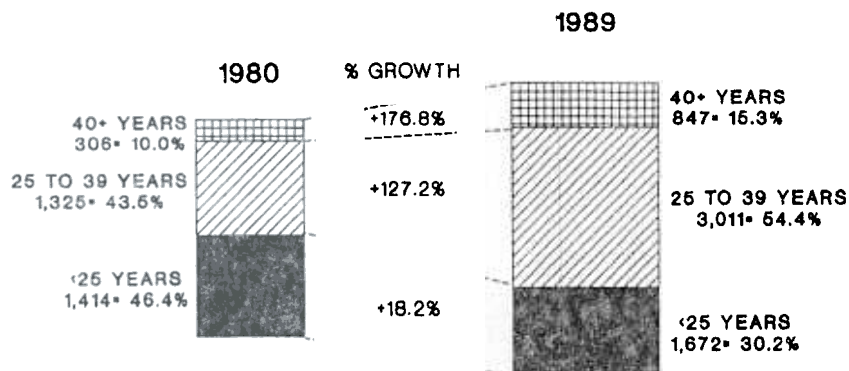


TABLE 6: Profile of Court Commitments Received in 1980 by Age, Race, and Sex

Age	Race		Sex		Total	Percent	
	White	Non-White	Male	Female		White	Male
Under 18.....	18	22	40	0	40	45.0	100.0
18 to 20.....	337	210	531	16	547	61.6	97.1
21 to 24.....	510	317	803	24	827	61.7	97.1
25 to 29.....	381	334	671	44	715	53.3	93.8
30 to 34.....	187	220	378	29	407	45.9	92.9
35 to 39.....	113	90	186	17	203	55.7	91.6
40 to 44.....	62	65	113	14	127	48.8	89.0
45 to 49.....	47	40	82	5	87	54.0	94.3
50 to 54.....	29	13	41	1	42	69.0	97.6
55 to 59.....	20	14	31	3	34	58.8	91.2
60 to 64.....	5	7	12	0	12	41.7	100.0
65 and over....	3	1	2	2	4	75.0	50.0
Unknown.....	24	14	30	8	38	63.2	78.9
Total.....	1,736	1,347	2,920	163	3,083	56.3	94.7
Median.....	24.9	26.8	25.5	29.3	25.8		
Average.....	27.7	28.6	27.9	31.3	28.1		
% under 25.....	50.5	41.2	47.5	25.8	46.4		
% 40 and over..	9.7	10.5	9.7	16.1	10.1		

TABLE 7: Profile of Court Commitments Received in 1989 by Age, Race, and Sex

Age	Race		Sex		Total	Percent	
	White	Non-White	Male	Female		White	Male
Under 18.....	4	16	20	0	20	20.0	100.0
18 to 20.....	238	268	487	19	506	47.0	96.5
21 to 24.....	552	594	1,070	76	1,146	48.2	93.4
25 to 29.....	677	664	1,221	120	1,341	50.5	91.1
30 to 34.....	521	515	924	112	1,036	50.3	89.2
35 to 39.....	331	303	561	73	634	52.2	88.5
40 to 44.....	205	204	357	52	409	50.1	87.3
45 to 49.....	128	90	196	22	218	58.7	89.9
50 to 54.....	64	35	90	9	99	64.6	90.9
55 to 59.....	35	21	51	5	56	62.5	91.1
60 to 64.....	24	15	37	2	39	61.5	94.9
65 and over....	16	10	25	1	26	61.5	96.2
Unknown.....	26	21	47	0	47	55.3	100.0
Total.....	2,821	2,756	5,086	491	5,577	50.6	91.2
Median.....	29.4	28.7	28.9	31.4	29.1		
Average.....	31.5	30.4	30.8	32.6	31.0		
% under 25.....	28.4	32.1	31.3	19.3	30.2		
% 40 and over..	16.9	13.7	15.0	18.5	15.3		

Court Commitments by Offense

Based on 1980-1988 data (1989 not available), 68% of all court commitments were convicted and sentenced for Part I Offenses (see Table 8). During this period, approximately ten percent of the commitments were criminal homicide cases (murder and manslaughter). The two highest offenses were burglary (18.4%) and robbery (18.0%). During this period, the number of commitments for narcotic drug laws tripled from 202 in 1980 to 610 in 1988.

**TABLE 8: Court Commitments Received in the Department of Corrections
1980 to 1988 by Offense**

Part I Offenses	1980	1981	1982	1983	1984	1985	1986	1987	1988	Average	Percent of Total
Murder											
1st degree.....	55	72	69	92	91	72	89	80	133	83.7	2.1%
2nd degree.....	33	44	43	44	38	24	27	31	43	36.3	0.9%
3rd degree.....	136	158	131	140	158	143	130	136	137	141.0	3.6%
Unspecified.....	12	22	29	15	21	27	29	30	41	25.1	0.6%
Manslaughter											
Voluntary.....	53	50	49	50	44	52	52	49	51	50.0	1.3%
Involuntary.....	27	38	41	50	31	30	22	42	36	35.2	0.9%
Homicide (Mtr Vehicle)	-	-	-	-	9	21	27	30	25	12.4	0.3%
Forcible Rape.....	156	130	166	161	195	204	241	228	246	191.9	4.8%
Robbery.....	589	774	808	754	860	726	660	595	638	711.6	18.0%
Aggravated Assault....	194	206	234	267	283	326	314	300	354	275.3	7.0%
Burglary.....	596	776	830	890	873	765	678	593	530	725.7	18.4%
Theft-Larceny.....	267	268	356	405	445	429	353	356	338	357.4	9.0%
Arson.....	41	48	43	71	57	59	56	61	49	53.9	1.4%
Total Part I Offenses.....	2,159	2,586	2,799	2,939	3,105	2,878	2,678	2,531	2,621	2,699.6	68.3%
Part II Offenses											
Other Assaults.....	88	100	107	112	108	129	121	80	92	104.1	2.6%
Forgery.....	62	63	71	101	85	83	103	73	78	79.9	2.0%
Fraud.....	44	56	59	58	65	38	51	39	38	49.8	1.3%
Receiving Stolen Property.....	111	133	144	143	150	167	121	107	107	131.4	3.3%
Weapons.....	34	33	49	48	48	59	56	35	22	42.7	1.1%
Drunken Driving.....	25	23	36	45	64	58	65	34	77	47.4	1.2%
Prison Breach.....	59	43	48	38	54	30	54	45	46	46.3	1.2%
Conspiracy.....	28	45	57	67	94	89	65	38	54	59.7	1.5%
Kidnapping.....	17	20	12	20	22	18	19	18	20	18.4	0.5%
Statutory Rape.....	14	14	13	13	22	24	13	11	9	14.8	0.4%
Deviate Sexual Intercourse.....	37	32	41	63	81	127	150	145	149	91.7	2.3%
Other Sex Offenses	48	28	37	28	57	49	51	53	73	47.1	1.2%
Narcotic Drug Laws....	202	220	275	286	304	346	401	436	610	342.2	8.7%
Other Part II Offenses	112	102	95	110	119	133	127	135	113	116.2	2.9%
Total Part II Offenses	881	912	1,044	1,132	1,273	1,350	1,397	1,249	1,488	1,191.8	30.2%
Unknown	43	53	62	51	78	78	70	65	61	62.3	1.5%
Total.....	3,083	3,551	3,905	4,122	4,306	4,306	4,145	3,845	4,170	3,937.0	100.0%

Court Commitments by Minimum Sentence

Since inmates are normally paroled at or near their minimum sentence, the Department can anticipate that 49% or 2,581 of the 1989 court commitments will be paroled within two years. Furthermore, nearly 83% of these commitments are expected to be paroled within five years (Table 9), as by statute, a minimum sentence cannot be more than one-half the maximum sentence.

Court Commitments by Maximum Sentence

Table 10 presents data on 1989 court commitments by maximum sentence. Even though the DOC realizes that the majority of offenders are paroled before serving their maximum sentence, there is the potential of housing inmates for a very long time. Over half (52.6%) of the 1989 commitments were given maximum sentences which exceeded five years, including 128 lifers without parole and 18 inmates under sentence of death.

TABLE 9: Court Commitments to the DOC During 1989 by Minimum Sentence and Sex

Minimum Sentence	Male		Female		Total	
	Percent		Percent		Percent	
	Number	of Total	Number	of Total	Number	of Total
1 Year and Under....	952	19.88	156	32.36	1,108	21.02
Over 1 to 2 Years...	1,325	27.67	148	30.70	1,473	27.95
Over 2 to 3 Years...	819	17.10	72	14.94	891	16.91
Over 3 to 5 Years...	867	18.10	57	11.83	924	17.53
Over 5 to 10 Years..	443	9.25	31	6.43	474	8.99
Over 10 to 20 Years.	134	2.80	8	1.66	142	2.69
Over 20 Years.....	109	2.27	4	0.83	113	2.14
Life w/o Parole.....	123	2.57	5	1.04	128	2.43
Death Sentence.....	17	0.36	1	0.21	18	0.34
Not Yet Reported....	297	-	9	-	306	-
TOTAL.....	5,086	100.00	491	100.00	5,577	100.00

TABLE 10: Court Commitments to the DOC During 1989 by Maximum Sentence and Sex

Maximum Sentence	Male		Female		Total	
	Percent		Percent		Percent	
	Number	of Total	Number	of Total	Number	of Total
Under 2 Years.....	14	0.00	39	7.99	53	1.00
Two Years Only.....	464	9.70	60	12.29	524	9.94
Over 2 to 5 Years.....	1,720	35.96	199	40.78	1,919	36.41
Over 5 to 10 Years.....	1,559	32.60	124	25.41	1,683	31.93
Over 10 to 20 Years.....	578	12.08	44	9.00	622	11.80
Over 20 to 30 Years.....	143	2.99	9	1.84	152	2.88
Over 30 to 40 Years.....	42	0.88	1	0.21	43	0.82
Over 40 to 50 Years.....	20	0.42	2	0.41	22	0.42
Over 50 Years.....	103	2.15	4	0.82	107	2.03
Life w/o Parole.....	123	2.57	5	1.04	128	2.43
Death Sentence.....	17	0.36	1	0.21	18	0.34
Not Yet Reported.....	303	-	3	-	306	-
TOTAL.....	5,086	100.00	491	100.00	5,577	100.00

Lifers Received

Table 11 presents a profile of lifers received in the Pennsylvania DOC from 1980 to 1989. The total number of lifers received the past ten years was 1,257 or an average of 126 per year. The typical lifer received was from Philadelphia County, 20 to 29 years old, nonwhite, and male.

TABLE 11: Profile of Lifers Received in the DOC 1980 to 1989

County	1980	1981	1982	1983	1984	1985	1986	1987	1988	1989	Total	Z
Philadelphia.	45	50	46	88	78	50	79	60	114	85	695	55.3
Allegheny....	6	19	16	9	11	15	11	13	17	6	123	9.8
Delaware.....	3	5	10	6	3	4	2	4	4	2	43	3.4
Bucks.....	4	8	4	1	6	3	3	4	3	1	37	2.9
Dauphin.....	2	6	3	0	6	11	2	1	0	4	35	2.8
Chester.....	2	5	3	1	3	1	2	3	3	1	24	1.9
York.....	2	1	2	4	3	2	1	2	5	1	23	1.8
Berks.....	1	2	0	5	4	3	1	1	2	1	20	1.6
Montgomery...	0	1	2	1	0	1	2	4	3	4	18	1.4
Fayette.....	1	3	3	0	2	0	0	3	4	0	16	1.3
Erie.....	1	2	2	0	1	0	1	3	4	1	15	1.2
Lancaster....	4	0	2	1	2	2	0	1	0	3	15	1.2
Westmoreland.	0	0	1	0	1	1	4	0	3	3	13	1.0
Lehigh.....	1	2	0	3	0	0	2	0	3	1	12	1.0
Blair.....	1	0	0	0	3	0	2	5	0	0	11	0.9
Luzerne.....	1	2	2	1	0	0	0	1	2	2	11	0.9
Northampton..	0	2	0	0	2	2	1	2	2	0	11	0.9
Remaining Counties.....	12	18	15	12	11	16	10	12	16	13	135	10.7
Age:												
Under 20.....	6	13	18	15	5	6	5	10	10	11	88	7.8
20-24.....	27	37	24	37	48	26	30	26	48	40	303	26.8
25-29.....	28	28	23	38	32	28	30	29	41	27	277	24.5
30-34.....	9	21	20	20	26	15	27	18	32	18	188	16.7
35-39.....	9	8	12	10	12	19	10	19	18	11	117	10.4
40-44.....	4	7	5	8	7	6	11	6	20	10	74	6.6
45 and over..	3	12	9	4	6	11	10	11	16	11	82	7.3
Average.....	28	29	29	28	29	31	31	30	31	29	30	
Race:												
White.....	30	57	47	46	55	47	41	51	64	53	491	38.8
Non-White..	56	69	64	86	81	64	82	68	121	75	766	61.2
Sex:												
Male.....	86	119	105	127	128	104	117	110	173	123	1,192	94.7
Female.....	0	7	6	5	8	7	6	9	12	5	65	5.3
TOTAL.....	86	126	111	132	136	111	123	119	185	128	1,257	100.0

SECTION

2

POPULATION

General Trends

Since 1975, the civilian population in Pennsylvania has grown by just over 1% while the DOC inmate population grew by nearly 200% (Table 12). The incarceration rate grew from 57.6 prisoners per 100,000 civilians in 1975 to 170.2 prisoners per 100,000 civilians in 1989. The number of Index Crimes¹ reported in 1989 represented a 3% increase over 1975 although the rate has fluctuated since 1975. There is little or no correlation between prison population and either civilian population growth or crime rate.

TABLE 12: Comparison of Civilian and Inmate Populations, 1975 to 1989

	Civilian Population	Inmate Population *	Rate Per 100,000	Total Index Crimes	Reported Crime Rate
1975.....	11,897,600	6,853	57.6	392,872	3,291.1
1976.....	11,885,000	7,545	63.5	394,773	3,302.8
1977.....	11,879,900	7,561	63.6	366,662	3,063.5
1978.....	11,862,700	7,807	65.8	370,600	3,092.1
1979.....	11,867,800	7,806	65.8	405,871	3,381.7
1980.....	11,863,985	8,243	69.5	443,043	3,745.7
1981.....	11,879,200	9,420	79.3	436,527	3,678.6
1982.....	11,882,500	10,572	89.0	411,778	3,470.0
1983.....	11,894,500	11,798	99.2	381,695	3,216.5
1984.....	11,891,300	13,126	110.4	363,024	3,051.9
1985.....	11,863,700	14,260	120.2	359,254	3,018.7
1986.....	11,889,000	15,227	128.1	367,113	3,097.0
1987.....	11,936,000	16,302	136.6	374,797	3,152.5
1988.....	12,002,100	17,929	149.4	378,756	3,173.0
1989.....	12,040,000	20,490	170.2	404,738	3,365.2

* December 31

Population By County

Table 13 and Figure 4 show the ten counties which had the highest incarceration rate for 1988. As of December 31, 1988, Philadelphia (433.3), Dauphin (261.6), Erie (219.5), and Allegheny (190.1) reported the highest incarceration rates. As expected, over one-half of the inmates in the Pennsylvania DOC at the close of 1989 were from two counties, Philadelphia (37.68%) and Allegheny (14.87%). The next three highest committing counties were Erie (3.59%), Montgomery (3.50%) and Dauphin (3.41%). Less than 40 percent of the DOC's inmates were from the 62 remaining counties (see Table 14).

¹Index Crimes include (murder, voluntary manslaughter, rape, robbery, aggravated assault, burglary, theft, and arson).

County	1980	1988
Philadelphia.....	165.3	433.3
Dauphin.....	153.2	261.6
Erie.....	86.9	219.5
Allegheny.....	78.1	190.1
Northumberland...	70.7	159.6
Mercer.....	111.5	154.4
Lycoming.....	78.5	152.2
Crawford.....	102.4	138.4
Warren.....	75.9	131.6
Berks.....	57.3	124.3

FIGURE 4: INCARCERATION RATES FOR THE TOP TEN COUNTIES, 1980 versus 1988

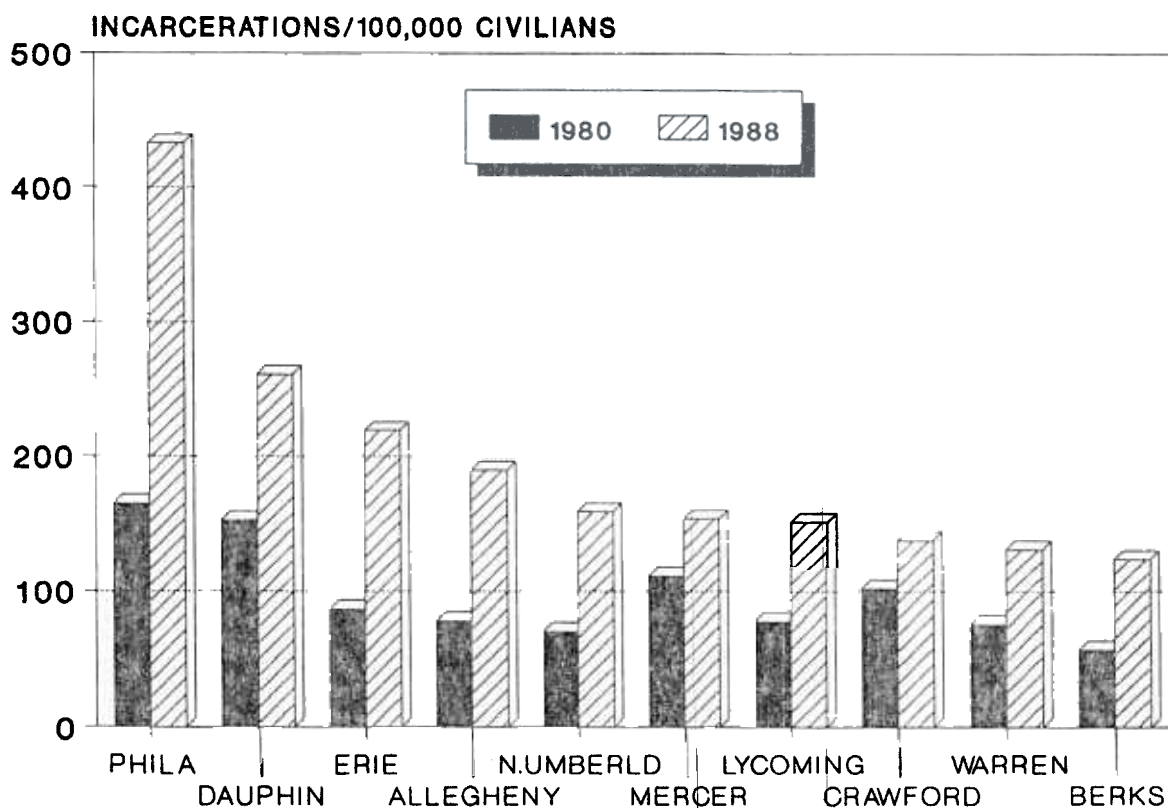


TABLE 14: Inmates in the DOC on December 31, 1980, 1988, & 1989 by Committing County and Sex

County	December 31, 1980			December 31, 1988			December 31, 1989			Percent of Total		
	Male	Female	Total	Male	Female	Total	Male	Female	Total	12/31/80	12/31/88	12/31/89
Adams	21	1	22	54	1	55	51	2	53	0.27	0.31	0.28
Allegheny	1,088	44	1,132	2,426	149	2,575	2,684	173	2,857	13.73	14.36	14.87
Armstrong	23	0	23	25	0	25	33	1	34	0.28	0.14	0.18
Beaver	103	5	108	93	6	99	109	11	120	1.31	0.55	0.62
Bedford	10	0	10	9	0	9	14	0	14	0.12	0.05	0.07
Berks	166	13	179	384	25	409	542	33	575	2.17	2.28	2.99
Blair	65	2	67	108	1	109	97	2	99	0.81	0.61	0.52
Bradford	8	0	8	29	3	32	41	2	43	0.10	0.18	0.22
Bucks	116	6	122	366	11	377	383	15	398	1.48	2.10	2.07
Butler	79	2	81	71	4	75	93	5	98	0.98	0.42	0.51
Cambria	47	0	47	99	3	102	91	5	96	0.57	0.57	0.50
Cameron	7	0	7	3	0	3	3	0	3	0.08	0.02	0.02
Carbon	9	0	9	28	1	29	28	0	28	0.11	0.16	0.15
Centre	47	0	47	78	1	79	86	2	88	0.57	0.44	0.46
Chester	105	10	115	264	10	274	282	11	293	1.40	1.53	1.53
Clarion	14	0	14	24	2	26	17	1	18	0.17	0.15	0.09
Clearfield	65	1	66	82	2	84	109	9	118	0.80	0.47	0.61
Clinton	18	1	19	42	2	44	48	3	51	0.23	0.25	0.27
Columbia	30	1	31	31	0	31	39	2	41	0.38	0.17	0.21
Crawford	84	7	91	112	7	119	116	8	124	1.10	0.66	0.64
Cumberland	63	4	67	135	6	141	134	9	143	0.81	0.79	0.74
Dauphin	336	20	356	591	39	630	616	39	655	4.32	3.51	3.41
Delaware	180	10	190	449	17	466	501	21	522	2.30	2.60	2.72
Elk	10	0	10	18	2	20	29	2	31	0.12	0.11	0.16
Erie	237	6	243	573	35	608	654	36	690	2.95	3.39	3.59
Fayette	110	2	112	156	11	167	173	10	183	1.36	0.93	0.95
Forest	7	1	8	15	0	15	14	0	14	0.10	0.08	0.07
Franklin	45	1	46	120	3	123	127	4	131	0.56	0.69	0.68
Fulton	4	0	4	16	0	16	18	0	18	0.05	0.09	0.09
Greene	20	1	21	46	4	50	61	3	64	0.25	0.28	0.33
Huntingdon	17	2	19	33	2	35	35	1	36	0.23	0.20	0.19
Indiana	29	1	30	53	2	55	58	2	60	0.36	0.31	0.31
Jefferson	20	0	20	13	0	13	16	0	16	0.24	0.07	0.08
Juniata	10	0	10	12	0	12	13	0	13	0.12	0.07	0.07
Lackawanna	70	5	75	184	10	194	182	7	189	0.91	1.08	0.98
Lancaster	172	7	179	293	9	302	348	12	360	2.17	1.68	1.87
Lawrence	71	1	72	82	7	89	134	13	147	0.87	0.50	0.77
Lebanon	48	1	49	122	10	132	140	8	148	0.59	0.74	0.77
Lehigh	99	5	104	235	11	246	279	28	307	1.26	1.37	1.60
Luzerne	83	4	87	117	5	122	105	5	110	1.06	0.68	0.57
Lycoming	79	14	93	158	22	180	179	22	201	1.13	1.00	1.05
McKean	12	0	12	33	0	33	38	1	39	0.15	0.18	0.20
Mercer	142	1	143	179	10	189	192	10	202	1.73	1.05	1.05
Mifflin	40	0	40	35	1	36	51	3	54	0.49	0.20	0.28
Monroe	24	1	25	59	2	61	62	5	67	0.30	0.34	0.35
Montgomery	400	29	429	637	47	684	631	41	672	5.20	3.82	3.50
Montour	4	0	4	14	0	14	15	2	17	0.05	0.08	0.09
Northampton	64	2	66	140	9	149	146	6	152	0.80	0.83	0.79
Northumberland	67	4	71	148	9	157	143	11	155	0.86	0.88	0.80
Perry	15	2	17	45	1	46	41	4	45	0.21	0.26	0.23
Philadelphia	2,744	46	2,790	6,925	211	7,136	6,976	266	7,242	33.85	39.80	37.68
Pike	6	0	6	53	4	57	41	2	43	0.07	0.32	0.22
Potter	10	2	12	11	1	12	15	1	16	0.15	0.07	0.08
Schuylkill	25	0	25	56	1	57	62	0	62	0.30	0.32	0.32
Snyder	5	0	5	27	0	27	24	3	27	0.06	0.15	0.14
Somerset	38	1	39	41	0	41	51	0	51	0.47	0.23	0.27
Sullivan	1	0	1	2	0	2	2	0	2	0.01	0.01	0.01
Susquehanna	8	0	8	27	2	29	34	4	38	0.10	0.16	0.20
Tioga	34	1	35	62	6	68	59	4	63	0.42	0.38	0.33
Union	9	0	9	23	1	24	27	2	29	0.11	0.13	0.15
Venango	35	2	37	42	3	45	53	1	54	0.45	0.25	0.28
Warren	35	1	36	60	0	60	58	2	60	0.44	0.33	0.31
Washington	98	2	100	117	3	120	133	4	137	1.21	0.67	0.71
Wayne	9	1	10	26	4	30	35	2	37	0.12	0.17	0.19
Westmoreland	98	0	98	185	11	196	198	7	205	1.19	1.09	1.07
Wyoming	17	0	17	26	1	27	26	0	26	0.21	0.15	0.14
York	177	3	180	396	21	417	479	37	516	2.11	2.33	2.69
Other	31	4	35	39	1	40	18	1	19	0.42	0.22	0.10
No Data	-	-	-	-	-	-	1,253	19	1,272	-	-	-
TOTAL	7,963	280	8,243	17,157	772	17,929	19,545	945	20,490	100.00	100.00	100.00

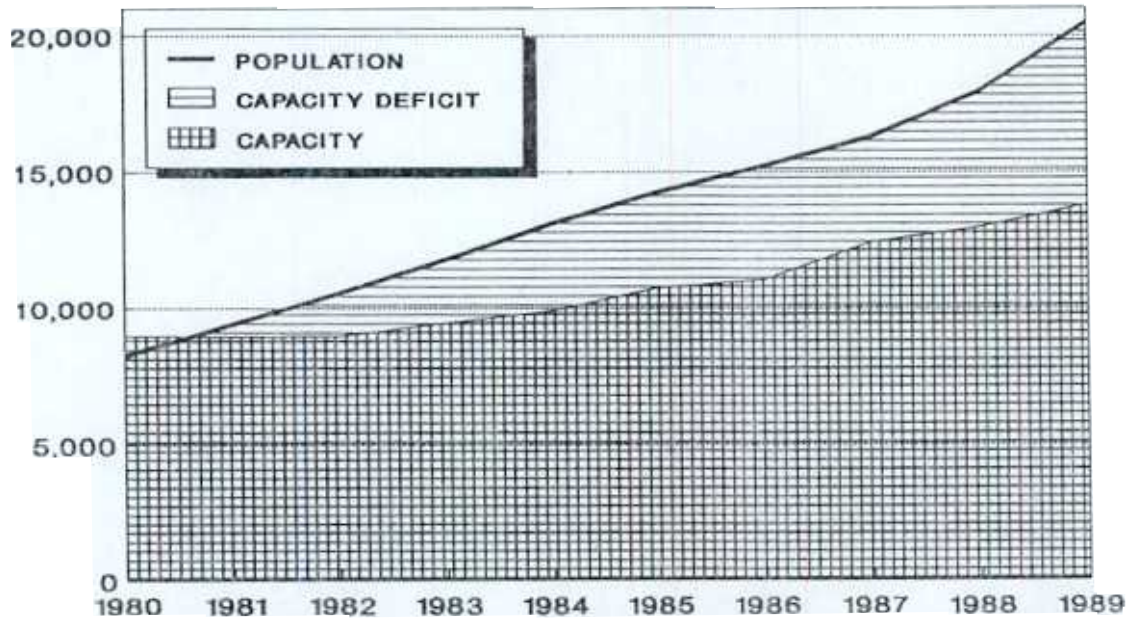
Population Versus Capacity

Prior to 1981, the Department had a capacity margin of roughly 10% (see table 15). Since 1981, the DOC's population has grown by 149% while design capacity has grown only 54%, creating a capacity deficit of 6,665 beds (figure 5). The DOC was 148.2% of capacity on December 31, 1989. On this date, nine correctional facilities were over 150% of designed capacity and the only facilities with populations less than design capacity were the Community Corrections Centers (CCCs) and the Camp Hill Institution. The disturbance in October 1989 and resulting damage rendered some of that facility's capacity unusable. Because of this situation, inmates from Camp Hill were transferred to the Federal Bureau of Prisons and to other facilities in the Pennsylvania DOC.

TABLE 15: Inmate Population Versus Capacity on December 31, 1980 to 1989

Year	Number of Inmates	Capacity	Percent of Capacity
1980.....	8,243	8,969	91.9
1981.....	9,420	8,959	105.1
1982.....	10,572	8,975	117.8
1983.....	11,798	9,451	124.8
1984.....	13,126	9,907	132.5
1985.....	14,260	10,742	132.7
1986.....	15,227	11,048	137.8
1987.....	16,302	12,447	131.0
1988.....	17,929	12,972	138.2
1989.....	20,490	13,825	148.2

FIGURE 5: INMATE POPULATION VERSUS CAPACITY, DECEMBER 31, 1980 to 1989



Month-End Populations

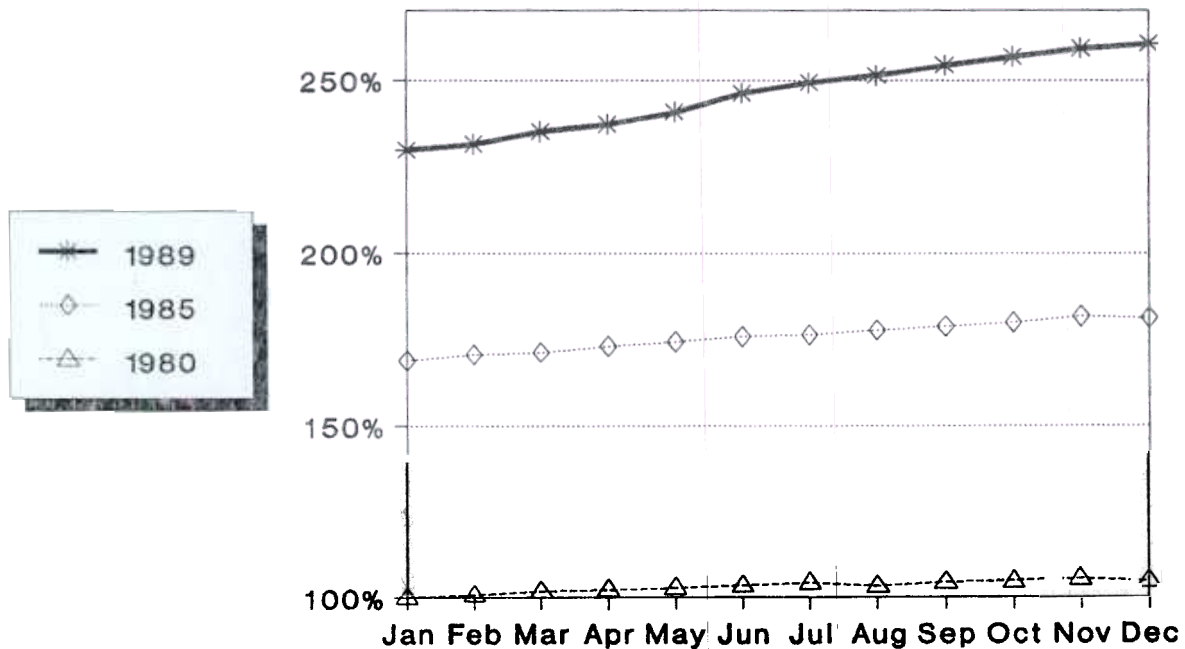
Since December 31, 1979, month-end population in the Pennsylvania DOC increased an average of 105.7 inmates per month. During this period, monthly populations decreased only seven times. The last month-end decrease was in November, 1987. During 1989, month-end populations experienced the highest growth averaging 213.4 inmates per month (see Table 16 and Figure 6).

TABLE 16: Month-end Populations in the DOC January 1980 to December 1989

Month	1980	1981	1982	1983	1984	1985	1986	1987	1988	1989
January 31.....	7,865	8,311	9,518	10,646	11,927	13,294	14,405	15,248	16,498	18,090
February 28....	7,920 *	8,386	9,642	10,786	11,976 *	13,435	14,472	15,314	16,620 *	18,228
March 31.....	8,008	8,418	9,776	10,905	12,117	13,483	14,685	15,518	16,850	18,506
April 30.....	8,040	8,645	9,922	10,984	12,225	13,619	14,782	15,634	17,041	18,668
May 31.....	8,083	8,760	10,011	11,056	12,370	13,722	14,951	15,743	17,094	18,946
June 30.....	8,135	8,859	10,161	11,146	12,496	13,834	15,055	15,910	17,268	19,369
July 31.....	8,199	8,959	10,251	11,273	12,595	13,880	15,120	16,005	17,382	19,611
August 31.....	8,123	8,986	10,247	11,352	12,662	13,989	15,051	16,019	17,441	19,776
September 30...	8,210	9,074	10,336	11,480	12,799	14,069	15,088	16,125	17,644	20,001
October 31.....	8,232	9,246	10,443	11,636	12,979	14,151	15,295	16,204	17,736	20,198
November 30....	8,299	9,323	10,540	11,698	13,115	14,292	15,315	16,203	17,833	20,382
December 31....	8,243	9,420	10,572	11,798	13,126	14,260	15,227	16,302	17,929	20,490

* February 29

FIGURE 6: MONTH-END INMATE POPULATIONS AS A PERCENT OF JANUARY 1980 POPULATION FOR 1980, 1985, & 1989



Population by Sex

Correctional administrators in the Pennsylvania DOC are concerned about the growth in the number of female inmates over the past decade. Female populations grew at a faster rate (238%) than male populations (145%). Since December 31, 1980, the number of females increased from 280 to 945(see Tables 17 and 18).

Population by Age

As shown in Tables 17 and 18, inmates in the Department are getting older. Elderly inmates, those 55 and over, are of particular concern to correctional administrators because of the special needs associated with this older population. This population increased from 206 on December 31, 1980 to 689 on December 31, 1989. The average age of the DOC population increased from 30 in 1980 to 34.1 in 1989.

TABLE 17: Inmate Population on December 31, 1980 by Facility, Race, Sex, and Age

Facility	Race		Sex		Age			Total
	White	Non-White	Male	Female	< 25	25-39	> 40	
Camp Hill....	599	659	1,258	0	899	322	37	1,258
Dallas.....	512	485	997	0	189	624	184	997
Graterford...	439	1,491	1,930	0	245	1,326	359	1,930
Greensburg...	174	84	258	0	135	104	19	258
Huntingdon...	597	504	1,101	0	268	682	151	1,101
Mercer.....	135	22	157	0	109	40	8	157
Muncy.....	108	144	17	235	51	152	49	252
Pittsburgh...	458	619	1,077	0	150	737	190	1,077
Rockview.....	580	379	959	0	384	497	78	959
CCCs*.....	142	107	204	45	60	157	32	249
Group Homes..	4	1	5	0	1	3	1	5
TOTAL.....	3,748	4,495	7,963	280	2,491	4,644	1,108	8,243
% of Total...	45.5	54.5	96.6	3.4	30.2	56.3	13.4	100.0

TABLE 18: Inmate Population on December 31, 1989 by Facility, Race, Sex, and Age

Facility	Race		Sex		Age			Total
	White	Non-White	Male	Female	< 25	25-39	> 40	
Camp Hill....	736	669	1,405	0	364	829	212	1,405
Cresson.....	456	342	798	0	96	522	180	798
Dallas.....	709	1,233	1,942	0	61	1,322	559	1,942
Frackville...	475	460	935	0	130	595	210	935
Graterford...	1,102	2,779	3,881	0	562	2,297	1,022	3,881
Greensburg...	333	427	760	0	93	493	174	760
Huntingdon...	935	1,020	1,955	0	98	1,299	558	1,955
Mercer.....	500	304	804	0	189	472	143	804
Muncy.....	295	418	16	697	69	449	195	713
Pittsburgh...	927	1,238	2,165	0	259	1,229	677	2,165
Retreat.....	386	372	758	0	126	494	138	758
Rockview.....	954	992	1,946	0	129	1,358	459	1,946
Smithfield...	368	367	735	0	206	433	96	735
Waymart.....	127	96	223	0	72	120	31	223
Waynesburg...	91	125	0	216	22	142	52	216
CCCs*.....	203	165	351	17	19	264	85	368
Group Homes..	33	55	73	15	5	60	23	88
Federal System...	278	520	798	0	196	502	100	798
TOTAL.....	8,908	11,582	19,545	945	2,696	12,880	4,914	20,490
% of Total...	43.5	56.5	95.4	4.6	13.2	62.8	24.0	100.0

*Community Corrections Centers

INCARCERATION STATUS

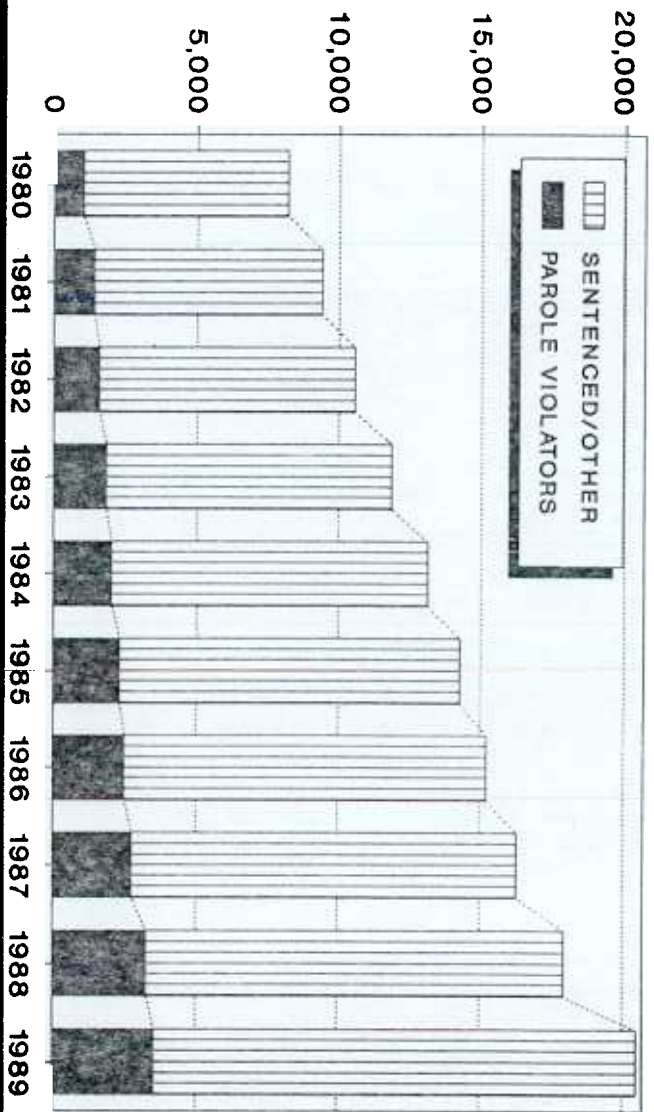
Table 19 and Figure 7 show the year-end populations in the DOC since 1980 by incarceration status. The population attributable to parole violators grew steadily from 12.7% in 1980 to 18.4% in 1988, and even though that population continued to grow through 1989, a large influx of sentenced prisoners in 1989 caused the percentage of parole violators to drop to 17.4%

TABLE 19: Status of Inmates in the Department of Corrections on December 31, 1980 to 1989

	December 31									
	1980	1981	1982	1983	1984	1985	1986	1987	1988	1989
Status:										
Sentenced.....	7,107	7,889	8,876	9,868	11,011	11,837	12,662	13,457	14,506	16,860
Parole Violators.....	1,050	1,422	1,608	1,852	2,052	2,352	2,521	2,798	3,297	3,565
Detentioners.....	53	59	44	86	29	23	13	22	24	22
Unknown.....	33	50	44	42	34	48	31	25	102	43
Total.....	8,243	9,420	10,572	11,848	13,126	14,260	15,227	16,302	17,929	20,490

Percent Distribution:										
Sentenced.....	86.2	83.7	84.0	83.3	83.9	83.0	83.2	82.5	80.9	82.3
Parole Violators.....	12.7	15.1	15.2	15.6	15.6	16.5	16.6	17.2	18.4	17.4
Detentioners.....	0.6	0.6	0.4	0.7	0.2	0.2	0.1	0.1	0.1	0.1
Unknown.....	0.4	0.5	0.4	0.4	0.3	0.3	0.2	0.2	0.6	0.2
Total.....	100.0	100.0	100.0	100.0	100.0	100.0	100.0	100.0	100.0	100.0

FIGURE 7: INMATE STATUS AS OF YEAR-END
1980 to 1989



Population by Offense

Approximately two-thirds of the DOC population was serving time for assaultive offenses on December 31, 1988. Also, on this date and based on definitions of crimes reported in the Federal Uniform Crime Report (UCR), 77.9% of these inmates were sentenced for Part I Offenses. As presented in Tables 20 and 21, the number of inmates incarcerated for narcotic drug offenses increased 284% from 311 on December 31, 1980 to 1,194 on December 31, 1988. (Preliminary data for December 31, 1989 shows that 1,961 inmates were incarcerated for narcotic drug offenses.) Please note that 1989 data by major offense was generally not available at the time this report was written due to problems associated with the conversion to a new inmate record system.

TABLE 20: Inmates by Offense Confined in the Department of Corrections on December 31, 1980 and 1988

Assaultive Offenses	12/31/80	12/31/88	Increase
Murder:			
1st Degree.....	711	1,443	103.0
2nd Degree.....	385	585	52.0
3rd Degree.....	588	1,119	90.0
Unspecified.....	64	207	223.0
Voluntary Manslaughter.....	172	237	38.0
Involuntary Manslaughter....	45	97	116.0
Forcible Rape.....	687	1,575	129.0
Robbery.....	1,953	3,796	94.0
Aggravated Assault.....	417	1,212	191.0
Other Assaults.....	104	193	86.0
Weapons.....	45	80	78.0
Kidnapping.....	67	110	64.0
Deviate Sexual Intercourse..	116	652	462.0
TOTAL ASSAULTIVE OFFENDERS	5,354	11,306	111.0
Non-Assaultive Offenders			
Burglary.....	1,278	2,517	97.0
Theft.....	356	918	158.0
Arson.....	85	189	122.0
Homicide by Vehicle.....	N/A	68	
Fraud.....	54	103	91.0
Receiving Stolen Property...	131	293	124.0
Forgery.....	114	225	97.0
Statutory Rape.....	34	46	35.0
Narcotic Laws.....	311	1,194	284.0
Drunken Driving.....	12	91	658.0
Prison Break.....	160	175	9.0
TOTAL NON-ASSAULTIVE OFFENDERS	2,535	5,819	130.0
Others/Unknown.....	354	804	127.0
TOTAL INMATES	8,243	17,929	118.0

**TABLE 21: Inmates in the DOC by Offense and Age
on December 31, 1980 and 1988**

Part I Offenses	12/31/80				12/31/88			
	Under 25	25-39	40 and over	Total	Under 25	25-29	40 and over	Total
Murder								
1st degree.....	86	455	170	711	94	821	528	1,441
2nd degree.....	93	242	50	385	63	425	97	585
3rd degree.....	182	293	113	588	158	709	252	1,119
Unspecified.....	18	36	10	64	39	100	68	207
Manslaughter								
Voluntary.....	26	109	37	172	29	137	71	237
Involuntary.....	15	20	10	45	26	52	19	97
Homicide(Mtr/Veh)	NA	NA	NA	NA	10	46	12	68
Forcible Rape...	201	402	84	687	201	1,031	343	1,575
Robbery.....	632	1,158	163	1,953	812	2,527	457	3,796
Agg. Assault....	122	242	53	417	215	775	222	1,212
Burglary.....	524	650	104	1,278	553	1,646	318	2,517
Theft-Larceny...	152	169	35	356	179	585	154	918
Arson.....	25	51	9	85	47	97	45	189
Total Part I Offenses.....	2,076	3,827	838	6,741	2,426	8,951	2,586	13,963
Part II Offenses								
Other Assaults..	41	46	17	104	35	131	27	193
Fraud.....	4	29	21	54	8	52	43	103
Receiving Stolen Property.....	60	60	11	131	87	167	39	293
Forgery.....	28	69	17	114	32	145	48	225
Statutory Rape..	6	15	13	34	4	25	17	46
Deviate Sexual Intercourse....	22	61	33	116	82	322	248	652
Narcotic Drug Laws	53	194	64	311	128	760	306	1,194
Weapons.....	10	33	2	45	5	49	26	80
Drunken Driving.	3	8	1	12	8	54	29	91
Prison Breach...	62	85	13	160	39	122	14	175
Kidnapping.....	14	44	9	67	17	65	28	110
Other Part II...	88	127	58	273	89	315	129	533
Total Part II Offenses.....	391	771	259	1,421	534	2,207	954	3,695
Unknown.....	24	46	11	81	41	162	68	271
Total Inmates...	2,491	4,644	1,108	8,243	3,001	11,320	3,608	17,929
Percent of Total	30.2	56.3	13.4	100.0	16.8	63.1	20.1	100.0

Inmate Profile

Table 22 compares the demographic profiles of the DOC's 1980 and 1989 year-end population. In 1989, the average inmate was 4 years older and more likely to be from a racial minority group and single than in 1980.

TABLE 22: Profile Comparisons of Inmates in the Department of Corrections on December 31, 1980 and 1989

Item	December 31, 1980		December 31, 1989	
	Number	Percent of Total	Number	Percent of Total
Age:				
Under 18.....	31	0.38	32	0.16
18-20.....	653	8.00	274	1.34
21-24.....	1,783	21.84	2,379	11.65
25-29.....	2,153	26.38	4,577	22.43
30-34.....	1,650	20.22	4,657	22.82
35-39.....	795	9.74	3,596	17.62
40-44.....	461	5.65	2,371	11.62
45-49.....	266	3.26	1,210	5.93
50-54.....	164	2.01	624	3.06
55-59.....	118	1.45	313	1.53
60-64.....	59	0.72	216	1.06
65 and over.....	29	0.35	160	0.78
Unknown.....	81	-	81	-
Average.....	30.1		34.1	-
Race:				
White.....	3,748	45.47	8,908	43.47
Black.....	4,490	54.47	11,535	56.30
American Indian.....	3	0.04	14	0.07
Mongolian.....	1	0.01	15	0.07
Other.....	1	0.01	18	0.09
Sex:				
Male.....	7,963	96.60	19,545	95.39
Female.....	280	3.40	945	4.61
Marital Status;				
Single.....	4,778	58.52	12,495	62.66
Married.....	2,067	25.31	4,277	21.45
Divorced.....	720	8.82	1,774	8.90
Separated.....	483	5.92	1,137	5.70
Widowed.....	117	1.43	258	1.29
Unknown.....	78	-	549	-
Birthplace:				
Pennsylvania.....	6,137	76.72	15,090	77.83
USA, not PA.....	1,805	22.57	3,933	20.28
Foreign Born.....	57	0.71	366	1.89
Unknown.....	244	-	1,101	-
Religion:				
Catholic.....	1,457	20.15	4,388	25.34
Protestant.....	4,205	58.15	8,936	51.60
Jewish.....	49	0.68	104	0.60
Moslem.....	97	1.34	1,992	11.50
Other.....	1,119	15.47	1,897	10.96
No Preference.....	305	4.21	-	-
Unknown.....	1,011	-	3,173	-
Total Inmates.....	8,243	100.00	20,490	100.00

Percent of total based on cases reported, does not include unknown/not reported cases

Long-term Inmates

A long-term inmate is one who is serving a minimum sentence of over ten years or a life or execution sentence. As shown in Table 23, long-term inmates increased by 177% from 1,263 on December 31, 1980 to 3,501 on December 31, 1989.

TABLE 23: Long-Term Inmates in the DOC on December 31, 1980 to 1989

	December 31										Change 1980-89	
	1980	1981	1982	1983	1984	1985	1986	1987	1988	1989	Amount	Percent
Minimum Sentence:												
Over 10 to 20 Years.....	324	357	429	510	586	675	765	853	964	1,118	794	245.06
Over 20 Years.....	83	98	114	130	143	174	201	237	279	307	224	269.88
Lifers	848	962	1,074	1,195	1,311	1,429	1,544	1,674	1,858	1,964	1,116	131.60
Capital Cases.....	8	11	25	33	48	55	74	81	100	112	104	
Total	1,263	1,428	1,642	1,868	2,088	2,333	2,584	2,845	3,201	3,501	2,238	177.20
% of Total Population.	15	15	16	16	16	16	17	18	18	17		

Not calculated for base population under 25

NOTE: Above totals do not include parole violators.

Inmates Serving Life

In Pennsylvania, a life sentence is without parole. However, the Governor can commute a lifer's sentence. Since 1980, 68 lifers have died and 35 have been released by commutation while the number of new lifers committed (refer to table 11) has averaged about 125 per year. As a result, the number of inmates serving life increased 131.6% from 848 to 1,964. As shown in Table 24, on December 31, 1989, 80.7% or 1,585 lifers were housed in four correctional institutions; they are Graterford (518), Huntingdon (421), Dallas (332) and Pittsburgh (314).

TABLE 24: Number of Inmates Serving Life in the Department of Corrections on December 31, 1980 and 1989 by Institution

Institution	December 31		Percent of Population		Percent of Change
	1980	1989	1980	1989	
Camp Hill.....	106	109	8.4	7.8	2.8
Dallas.....	138	332	-	17.1	140.6
Graterford.....	275	518	13.8	13.3	88.4
Huntingdon.....	145	421	14.2	21.5	190.3
Muncy.....	29	88	13.2	12.3	203.4
Pittsburgh.....	132	314	11.5	14.5	137.9
Rockview.....	23	32	12.3	1.6	39.1
Federal Prisons.....	-	146	2.4	-	-
Other.....	0	4 *	-	-	-
TOTAL.....	848	1,964	10.3 **	9.6 **	131.6

* Represents one lifer at Cresson, one at Mercer, and two at Smithfield

** Percentage is based on total inmate population in the Department of Corrections

Table 25 shows that from 1980 to 1988, 80.4% of the lifers were committed by only ten counties. Over half were received from Philadelphia County (52.4%). On December 31, 1988 (1989 data not available), the 1,858 inmates serving life averaged 36.6 years of age. This was three years older than the average age of lifers at the close of 1980. On December 31, 1988, 98 lifers were 55 years of age or older and 24 of these were 65 and over (see Table 26).

TABLE 25: Ten Highest Counties with Inmates Serving Life on December 31, 1980 to 1988

County	Percent										
	1980	1981	1982	1983	1984	1985	1986	1987	1988	Average of Total	
Philadelphia...	443	482	535	621	688	741	826	890	1,008	693	52.4
Allegheny.....	73	93	111	117	124	141	151	166	182	129	9.7
Dauphin.....	46	51	53	53	58	68	69	70	70	60	4.5
Delaware.....	28	34	43	48	51	56	56	60	65	49	3.7
Bucks.....	17	26	28	29	34	36	40	46	50	34	2.6
York.....	23	27	27	30	33	37	35	38	43	33	2.5
Chester.....	14	20	23	24	26	27	30	33	36	26	2.0
Montgomery....	13	14	16	17	16	19	20	23	26	18	1.4
Berks.....	9	10	11	18	21	23	23	23	25	18	1.4
Lancaster.....	13	13	15	16	17	20	20	21	21	17	1.3
Remaining Counties.....	169	194	212	222	243	261	274	304	332	246	18.6
TOTAL.....	848	964	1,074	1,195	1,311	1,429	1,544	1,674	1,858	1,322	100.0

TABLE 26: Age of Inmates Serving a Life Sentence in the DOC on December 31, 1980 and 1988

Age	December 31, 1980			December 31, 1988		
	Number	Percent of Total	Cum. Percent	Number	Percent of Total	Cum. Percent
Under 20...	17	2.00	2.00	11	0.59	0.59
20 to 24...	138	16.27	18.28	148	7.97	8.55
25 to 29...	211	24.88	43.15	341	18.35	26.9
30 to 34...	195	23.00	66.15	410	22.07	48.97
35 to 39...	118	13.92	80.06	376	20.24	69.21
40 to 44...	59	6.96	87.02	264	14.21	83.42
45 to 49...	33	3.89	90.91	135	7.27	90.69
50 to 54...	29	3.42	94.33	75	4.04	94.73
55 to 59...	26	3.07	97.40	44	2.37	97.10
60 to 64...	15	1.77	99.17	30	1.61	98.71
65 & over..	7	0.83	100.00	24	1.29	100.00
Total..	848	100.00		1,858	100.00	
Median..	31.50			35.20		
Average..	33.60			36.60		

Table 27 shows that as of December 31, 1988, the average time served of all lifers was 9.35 years and 98 lifers had served 20 years of more in prison.

TABLE 27: Time Served by Lifers in the DOC on December 31, 1980 to 1988

Time Served	1980	1981	1982	1983	1984	1985	1986	1987	1988
Under 5 Years.....	316	354	373	440	481	481	458	470	530
5 to 9.9 Years....	346	367	404	415	420	457	520	531	595
10 to 14.9 Years..	136	174	213	236	282	319	341	391	402
15 to 19.9 Years..	30	45	56	70	84	129	164	209	233
20 to 24.9 Years..	8	11	13	18	28	27	42	49	67
25 to 29.9 Years..	6	7	8	8	4	5	8	12	17
30 to 34.9 Years..	4	4	3	2	6	6	6	7	7
35 to 39.9 Years..	2	2	4	5	4	3	3	2	2
40 Years & Overs..	0	0	0	1	2	2	2	3	5
TOTAL.....	848	964	1,074	1,195	1,311	1,429	1,544	1,674	1,858
Median (years)....	6.56	6.74	7.03	6.90	7.08	7.55	8.02	8.46	8.35
Average (years)...	7.26	7.52	7.79	7.79	8.02	8.47	8.90	9.30	9.35

Inmates Under Death Sentence

Since no executions have taken place in Pennsylvania since April 1962, the number of capital cases has grown to 112 as of December 31, 1989. Over half were committed by Philadelphia County (see Table 28).

TABLE 28: Profile of Inmates Under Sentence of Death on December 31, 1989

	Number	% of Total
County: Philadelphia...	60	53.6
Allegheny.....	7	6.2
Montgomery.....	5	4.4
Bucks.....	4	3.6
Berks.....	3	2.7
Erie.....	3	2.7
Lackawanna.....	3	2.7
Luzerne.....	3	2.7
Northampton....	3	2.7
Washington.....	3	2.7
Dauphin.....	3	1.9
Delaware.....	2	1.8
Fayette.....	2	1.8
Lehigh.....	2	1.8
Westmoreland...	2	1.8
Other Counties.	8 *	7.0
Age: 20-24.....	8	7.0
25-29.....	22	19.7
30-34.....	32	28.6
35-39.....	20	17.9
40-44.....	13	11.6
45-49.....	11	9.8
50 and Over....	5	4.5
Unknown.....	1	0.9
Average.....	34.6	-
Race: White.....	41	36.6
Non-White.....	70	62.5
Asian.....	1	0.9
Sex: Male.....	111	99.1
Female.....	1	0.9
TOTAL.....	112	100.0

* One each from: Beaver, Butler, Cambria, Crawford, Cumberland, Huntingdon, Lancaster, and York

SECTION

3

DISCHARGES

Types of Discharges

Table 29 shows discharges from the DOC from 1980 to 1989. Discharges include: (1) unconditional, (2) conditional, and (3) other discharges. The majority of inmates were paroled to supervision by Pennsylvania Board of Probation and Parole (PBPP) after serving their minimum sentence and remain on parole until the maximum sentence is completed. The PBPP has parole authority over all inmates with a maximum sentence of 2 years or more. Inmates with a maximum sentence of less than 2 years are supervised by county probation offices.

Unconditional Discharges

Unconditional discharges refer to: (1) inmates who served their maximum sentence in prison (maxed out) or (2) inmates discharged by court order before serving their minimum sentence. Included in this latter group are inmates whose conviction and/or sentence was vacated by the court. Generally, these individuals are given a new trial. From 1980 to 1989, only 11% of all discharges were unconditional. Those who "maxed out" generally represent either short-term inmates who were discharged for the first time or parole violators who were returned to serve the remainder of their original sentence.

Conditional Discharges

Most inmates are released to parole supervision, a conditional discharge. From 1980 to 1989, 69.3% of first releases were paroled to state (55.7%) and county (13.6%) paroling authorities. An additional 16.5% were reparaoled after being readmitted as a parole violator. Since 1980, the influx of recommitted parole violators caused reparaoles to increase by 330% from 297 in 1980 to 1,277 in 1989. The reclassification of the Regional Correctional Facility at Greensburg to a State Correctional Institution and the cap on new admissions to the Regional Correctional Facility at Mercer have caused county paroles to decline since 1986. Since then, fewer inmates were received to serve maximum sentences under 2 years in the DOC.

TABLE 29: Discharges from the DOC 1980 to 1989 by Type

	1980	1981	1982	1983	1984	1985	1986	1987	1988	1989	Average of Total	Percent
<u>Unconditional:</u>												
Maxed Out.....	195	231	247	302	296	388	484	506	540	588	377.7	8.3
By Court Order....	215	138	112	123	110	115	134	104	74	84	120.9	2.7
TOTAL.....	410	369	359	425	406	503	618	610	641	672	498.6	11.0
<u>Conditional:</u>												
State Parole.....	1,979	1,933	2,185	2,386	2,479	2,597	2,479	2,786	3,061	3,464	2,534.9	55.7
County Parole.....	691	684	727	745	810	967	878	410	169	117	619.8	13.6
Reparaoled (state).*	297	438	556	544	669	668	872	1,005	1,206	1,277	753.2	16.5
TOTAL.....	2,967	3,055	3,468	3,675	3,958	4,232	4,229	4,201	4,436	4,858	3,907.9	85.8
Deaths.....	22	26	21	29	40	35	34	47	47	60	36.1	0.8
Other.....	128	140	167	204	142	79	117	41	39	55	111.2	2.4
Total Discharges..	3,527	3,590	4,015	4,333	4,546	4,849	4,998	4,899	5,136	5,645	4,553.8	100.0

* Includes parole violators who were not officially recommitted by the PBPP but were detained and reinstated on parole as follows: 1980-14, 1981-52, 1982-80, 1983-76, 1984-116, 1985-120, 1986-162, 1987-218, and 1988-354.

Other Discharges

Other discharges, including inmate deaths, accounted for only 3.2% of all discharges since 1980. Deaths are on the increase, in part, because of the aging of the inmate population.

Paroling Actions

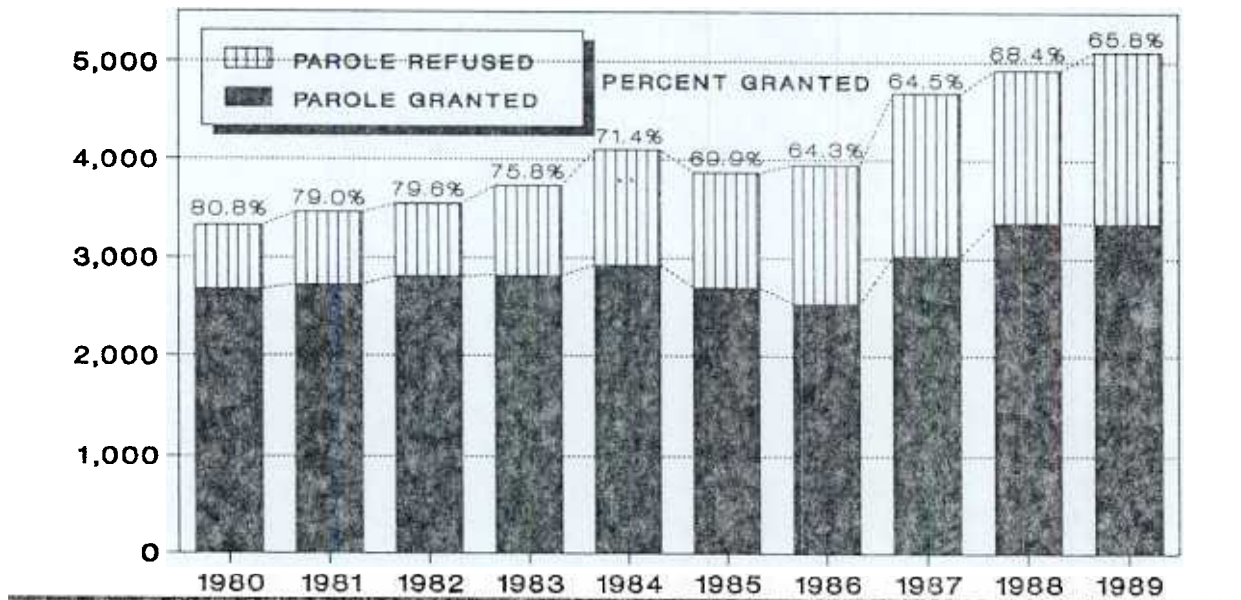
Table 30 and Figure 8 outline paroling actions by the Pennsylvania Board of Probation and Parole (PBPP) from 1980 to 1989. Although the number of paroles granted increased from 2,684 to 3,355 during this period, the percent of paroles granted decreased from 80.8% to 65.8%.

TABLE 30: Paroling Actions by the Pennsylvania Board of Probation and Parole Involving DOC Inmates, 1980 through 1989

Year	Paroles Granted	Paroles Refused	Total Actions	Percent Granted
1980.....	2,684	637	3,321	80.8
1981.....	2,728	727	3,455	79.0
1982.....	2,818	720	3,538	79.6
1983.....	2,825	901	3,726	75.8
1984.....	2,925	1,171	4,096	71.4
1985.....	2,699	1,162	3,861	69.9
1986.....	2,539	1,410	3,949	64.3
1987.....	3,021	1,665	4,686	64.5
1988.....	3,363	1,557	4,920	68.4
1989.....	3,355	1,745	5,100	65.8

SOURCE: Pennsylvania Board of Probation and Parole, Monthly Statistical Reports.

FIGURE 8: PAROLE BOARD DECISIONS ON DEPARTMENT INMATES, 1980 to 1989



Time Served

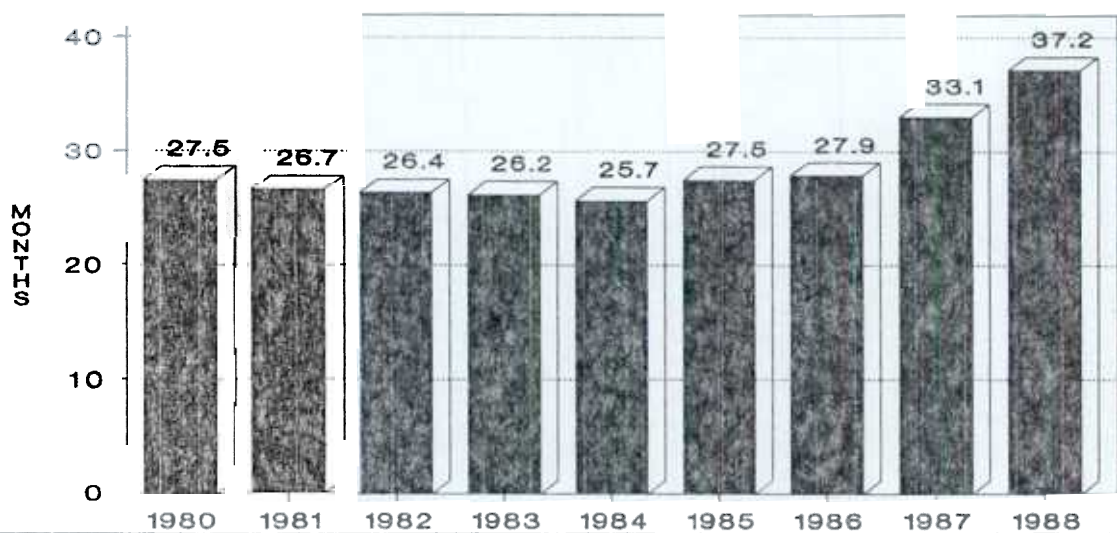
Table 31 and Figure 9 present average months served by inmates discharged from the Pennsylvania DOC from 1980 to 1988 (1989 data not available). Inmates paroled from maximum sentences under two years served an average of 8.5 months in 1980 compared to 10.5 months in 1988. Those paroled from maximum sentences of two years and over served an average 35.5 months in 1980 compared to 37.8 months in 1988. New sentencing policies as well as decreased admissions of shorter term inmates to regional facilities have contributed to an increase in average time served by all releases. In 1980, the average time served was 27.5 months compared to 37.2 months in 1988.

TABLE 31: Average Months Served by Inmates Discharged from the DOC, 1980-1988

Year Released	Maximum Sentences Under 2 Years		Maximum Sentences of 2 Years and Over		All Sentences	
	Number Paroled	Avg Months Served	Number Paroled	Avg Months Served	Total Release*	Avg Months Served
1980.....	691	8.5	1,979	35.5	3,080	27.5
1981.....	684	9.3	1,933	33.7	2,986	26.7
1982.....	727	8.3	2,185	33.1	3,271	26.4
1983.....	745	8.6	2,386	32.2	3,556	26.2
1984.....	810	8.0	2,479	32.0	3,695	25.7
1985.....	967	8.5	2,597	34.5	4,067	27.5
1986.....	878	8.9	2,479	34.7	3,975	27.9
1987.....	410	9.9	2,786	36.1	3,806	33.1
1988.....	169	10.4	3,064	37.8	3,844	37.2
Total.....	6,081	8.7	21,888	34.5	32,280	28.80

* Includes inmates released for other reasons (maxed out, released by court order, and etc.)
 NOTE: Above totals do not include parole violators reparaoled.

FIGURE 9: AVERAGE TIME SERVED BY INMATES DISCHARGED, 1980 to 1988



Lifers Discharged

During the last decade only 103 inmates serving a life sentence were discharged; 35 were released following commutation of their sentences and 68 died of natural causes. Commuted lifers served an average of 18.5 years before released. Lifers who died served an average of 10.3 years. (See Table 32)

TABLE 32: Lifers Discharged from the Department of Corrections, 1980 to 1989

Year Released	Commuted	Died	Total
1980.....	16	6	22
1981.....	5	5	10
1982.....	3	4	7
1983.....	3	8	11
1984.....	1	7	8
1985.....	2	8	10
1986.....	1	7	8
1987.....	0	5 *	5
1988.....	3	8	11
1989.....	1	10	11
Total.....	35	68	103
Average Time Served (Years).....	18.5	10.3	13.4

* Includes one commuted lifer returned as parole violator.

SECTION

4

MISCELLANEOUS

Escapes

While populations in the DOC increased substantially during the 1980's, the number of escapes decreased to a low of 61 during 1989. Furthermore, only five of these were actual prison breaches, or escapes where a prisoner actually compromised the security perimeter of an institution. At the close of 1989, 768 or 93.7% of the 820 reported escapes in the 1980's were returned to prison.

**TABLE 33: Number of Escapes from the Department of Corrections
1980 to 1989 by Facility and by Type**

Facility		1980	1981	1982	1983	1984	1985	1986	1987	1988	1989	Total
Camp Hill....	Breach	0	0	13	3	0	0	0	0	1	0	17
	Others		6	5	16	6	0	0	0	0	0	34
Cresson.....	Breach								0	0	0	0
	Others								1	2	2	5
Dallas.....	Breach	0	0	2	0	0	0	0	0	0	0	
	Others	5	4	3	1	2	3	2	0	1	0	
Frackville...	Breach								0	0	0	0
	Others								1	0	1	2
Graterford...	Breach	2	0		3	0	0	0	1	0	0	
	Others	15	4	2	2	4	7	4	9	5	1	53
Greensburg...	Breach	2	0	0	0	0	1	2	0	1	1	
	Others	0	6	1	4	8	1	3	2	1	1	27
Huntingdon...	Breach		0	2	0	0	2	2		0	1	9
	Others	0	2	1	4	1	2	0	2		2	15
Mercer.....	Breach	3	1	0	0	2	2	2	0	0	0	10
	Others	0	0	0	1	2		0	1	0	3	8
Muncy.....	Breach	16	15	12	16	4	2	0	0	0	1	66
	Others	2	1	2	2	2	1	3	0	0	2	15
Pittsburgh...	Breach	0	0	0	0	0	0	1	0	1	0	2
	Others	0	1		4	0	3	2	3	5	6	25
Retreat.....	Breach								0	0	0	0
	Others								0	0	1	1
Rockview.....	Breach	3	2	6	0	0	0		1	0	2	15
	Others	6	2	5	6	6	4	3	2	5	1	40
Waynesburg	Breach					0	0	0	0	0	0	0
	Others					1	0		2	0	0	4
SCI Total..	Breach	27	18	36	22	6	7	8	3	3	5	135
	Others	29	26	20	40	32	22	18	23	20	20	250
CCCs.....		35	33	53	50	38	45	51	51	43	36	435
TOTAL ESCAPES		91	77	109	112	76	74	77	77	66	61	820

NOTE: Others includes escapes that occurred outside the wall/fence while on work detail, work and/or educational release and furlough.

Personnel Complement

On December 31, 1989 the DOC employed 5,687 individuals. This total complement included 3,960 Corrections Officers or 69.6% of all filled positions. Administrative and clerical staff accounted for 718 or 12.6% of filled positions. Of the 718 vacant positions, 492 or 68.5% were for Correctional Officers.

TABLE 34: Complement Control Report by Location as of December 31, 1989

Facility	Status	Job Classification									Total
		Admin & Clerical	Cust.	Trtmt.	Educ.	Med.	Voc. & Maint.	Human Serv.	Insp. & Invest.	Ind.	
Camp Hill....	Filled	68	409	36	12	26	11	14	4	23	603
	Vacant	10	39	5	4	1	0	1	1	1	62
Cresson.....	Filled	31	222	13	7	0	6	4	3	3	289
	Vacant	1	11	0	0	0	0	1	1	0	14
Dallas.....	Filled	51	370	21	9	16	14	9	6	12	508
	Vacant	5	49	4	0	1	0	1	0	0	60
Frackville...	Filled	32	190	9	7	0	6	5	2	0	251
	Vacant	0	11	3	0	0	0	1	1	0	16
Graterford...	Filled	77	574	42	9	0	13	16	7	27	765
	Vacant	11	75	6	4	0	2	0	2	2	102
Greensburg...	Filled	26	178	10	6	11	2	6	2	4	245
	Vacant	3	30	3	0	0	0	1	2	0	39
Huntingdon...	Filled	49	331	20	10	17	8	13	5	28	481
	Vacant	2	45	6	3	3	0	0	0	0	59
Mercer.....	Filled	28	166	12	5	10	2	6	3	0	232
	Vacant	1	26	1	0	3	1	0	0	0	32
Muncy.....	Filled	32	182	12	9	14	4	5	2	5	265
	Vacant	5	30	4	0	1	0	2	0	0	42
Pittsburgh...	Filled	64	387	25	12	13	7	16	4	13	541
	Vacant	5	15	7	0	3	0	0	3	1	34
Retreat.....	Filled	28	185	8	6	0	6	6	2	0	241
	Vacant	5	17	2	1	0	0	0	1	0	26
Rockview.....	Filled	56	344	20	10	13	18	18	6	17	502
	Vacant	2	34	4	2	1	0	0	0	1	44
Smithfield...	Filled	33	222	7	7	0	4	4	3	0	280
	Vacant	2	8	3	0	0	0	0	0	0	13
Waymart.....	Filled	10	28	0	0	0	1	3	2	0	44
	Vacant	8	74	8	4	7	7	2	0	0	110
Waynesburg...	Filled	19	80	2	4	7	1	3	2	0	118
	Vacant	0	13	2	1	2	1	0	0	0	19
CCCs.....	Filled	20	89	50	0	0	0	0	4	0	163
	Vacant	2	11	8	0	0	0	0	0	0	21
Central Office	Filled	94	3	12	3	2	4	4	25	12	159
	Vacant	9	4	4	0	1	1	0	4	2	25
TOTAL.....	Filled	718	3,960	299	116	129	107	132	82	144	5,687
	Vacant	71	492	70	19	23	12	9	15	7	718