

Annual Statistical Report

Pennsylvania Department of Corrections



2005

Edward G. Rendell
Governor

Jeffrey A. Beard, Ph.D.
Secretary

PRS&G Overview

The Office of Planning, Research, Statistics and Grants directs the maintenance of historical data records for the Department and conducts ongoing planning, research, and evaluation activities designed to provide key decision-makers with quantitative data analysis for use in formulating and evaluating departmental policies and practices. Specific functions performed by the Office include planning, program evaluation, data analysis, statistical repository, policy development and analysis, grant preparation and oversight.

James Schaefer, Director
PRS&G

STAFF

Kelly Allen.....Grants Manager
Michael Antonio.....Research and Evaluation Analyst
David Brown.....Community Corrections Data Analyst
Jan Bucklen.....Administrative Officer
Kristofer Bret BucklenSenior Research and Evaluation Analyst
Roxanna Dinesen.....Chief, Quality Assurance
Mark Emery.....State/County Data Analyst
Robert FlahertyChief, Data Analysis
Bonnie GasswintPopulation and Projections Analyst
Michael HartmanWebmaster
Jessica Hathaway.....Grants Analyst
Dean Lategan.....Data Analyst
Julie Stone.....Information Coordinator
Lisa Wingard.....Research and Evaluation Analyst
Gary Zajac, Ph.DResearch and Evaluation Manager
Jesse Zortman.....Research and Evaluation Analyst

Annual Statistical Report



Report Preparation

Authors.....Mark Emery
Bonnie Gasswint
Michael Hartman
Dean Lategan
Julie Stone

Technical and Editorial Support.....PRS&G Staff

For additional information contact
The Bureau of Planning, Research, Statistics and Grants
at
(717) 214-8959 Fax (717) 731- 7830



COMMONWEALTH OF PENNSYLVANIA
DEPARTMENT OF CORRECTIONS
P.O. BOX 598
CAMP HILL, PENNSYLVANIA 17001-0598
(717) 975-4860

Secretary
Jeffrey A. Beard, Ph.D.

We are pleased to present the 2005 Annual Statistical Report on Pennsylvania's state prison system. This report provides a statistical overview of inmates admitted to, incarcerated in, and released from the Pennsylvania Department of Corrections in Calendar Year 2005. The report also offers a limited historical perspective on inmate profile changes for calendar years 1995 through 2005.

Recognizing the importance of reliable data for effective planning and evaluation efforts, the Department is committed to the ongoing development and refinement of our information systems and the corresponding published data reports. These efforts are being continuously undertaken in order to provide policy makers and correctional administrators with the timely and accurate data necessary to effectively manage the Department's nearly 14,000 employees, 25 prisons, 14 community corrections centers, one motivational boot camp, and more than 40,000 inmates.

We trust that this annual statistical report will serve to increase your understanding of the state prison system, its inmate population, and the significant challenges which the Department as well as Pennsylvania's entire criminal justice system are addressing.

Sincerely,

Jeffrey A. Beard, Ph.D.
Secretary of Corrections

Section I: Receptions

| | |
|---|----|
| Receptions Highlights..... | 9 |
| Table 1: State Prison Receptions by Type and Offender Gender, 1995 through 2005..... | 11 |
| Table 2: State Prison Receptions by Committing County and Offender Gender in 2005..... | 12 |
| Table 3: Ten Counties with the Highest Court Commitment Activity in 2005..... | 13 |
| Table 4: Court Commitments by County For 2004 and 2005..... | 14 |
| Table 5: Court Commitments Received from 1995 through 2005 by Age Group | 15 |
| Table 6: Profile of Court Commitments Received by Age, Race, and Gender in 2004..... | 16 |
| Table 7: Profile of Court Commitments Received by Age, Race, and Gender in 2005..... | 16 |
| Table 8: Comparison of Court Commitments by Offense for 2004 and 2005..... | 17 |
| Table 9: Court Commitments by Minimum Sentence and Offender Gender in 2005..... | 18 |
| Table 10: Court Commitments by Maximum Sentence and Offender Gender in 2005..... | 19 |
| Table 11: Profile of Offenders Serving a Life Sentence Received from 1995 through 2005..... | 20 |

Section II: Population

| | |
|--|----|
| Population Highlights..... | 23 |
| Table 12: Rank Order of Ten Counties with Highest Incarceration Rate for 2004 and 2005..... | 25 |
| Table 13: Inmate Population by County and Gender on December 31; Calendar Years 2004..... and 2005 | 26 |
| Table 14: Rank-Ordered Comparison of Civilian Population and State Incarceration for 2004.... and 2005 | 27 |
| Table 15: Inmate Population versus State Institutional Capacity from 1996 through 2005..... | 28 |
| Table 16: Month-End Population from January 1995 through December 2005..... | 29 |
| Table 17: Inmate Population by Facility, Race, Gender, and Age on December 31, 2004..... | 30 |
| Table 18: Inmate Population by Facility, Race, Gender, and Age on December 31, 2005..... | 30 |
| Table 19: Uniform Crime Report Offense Groupings by Inmate Race and Gender as of..... December 31, 2005 | 31 |
| Table 20: Status of Inmates on December 31; Calendar Years 1995 through 2005..... | 32 |

Contents

| | |
|--|-------|
| Table 21: Inmates by Primary Offense on December 31; Calendar Years 2004 and 2005..... | 33 |
| with 2005 Average Sentence Length | |
| Table 22: Demographic Profile of Inmates on December 31; Calendar Years 2004 and 2005..... | 34 |
| Table 23: Long-Term Inmates on December 31; Calendar Years 2004 and 2005..... | 35 |
| Table 24: Number of Inmates by Facility Serving a Life Sentence on December 31;..... | 35 |
| Calendar Years 2004 and 2005 | |
| Table 25: Ten Highest Counties with Inmates Serving a Life Sentence; Calendar Years 1995.... | 36 |
| through 2005 | |
| Table 26: Age of Inmates Serving a Life Sentence on December 31;..... | 36 |
| Calendar Years 2004 and 2005 | |
| Table 27: Time Served by Inmates Serving Life as of December 31;..... | 37 |
| Calendar Years 2004 and 2005 | |
| Table 28: Profile of Inmates Under Death Sentence on December 31;..... | 37 |
| Calendar Years 2004 and 2005 | |
| Section III: Releases | |
| Releases Highlights..... | 41 |
| Table 29: Average Time Served by Offense for Inmates Released During 2005..... | 43 |
| Table 30: Inmate Releases by Type for Calendar Years 2004 and 2005..... | 44 |
| Table 31: Average Months Served by Inmates Initially Released in Calendar Years 1995..... | 45 |
| through 2005 | |
| Table 32: Releases by Type for Inmates Serving a Life Sentence; Calendar Years 1995..... | 46 |
| through 2005 | |
| | 47 |
| Section IV: Miscellaneous | |
| Miscellaneous Highlights..... | 51 |
| Table 33: Number of Breach Escapes from 1995 through 2005 by Facility..... | 52 |
| Table 34: Number of Walk Away Escapes from 1995 through 2005 by Facility..... | 52 |
| Table 35: Complement Control by Location as of December 31, 2005..... | 53 |
| Section V: Glossary | |
| Glossary..... | 56-57 |

Graphs

| | |
|--|----|
| Graph 1: State Prison Receptions by Type; 1995 to 2005..... | 11 |
| Graph 2: Court Commitments by Major Contributing Counties; 2005..... | 13 |
| Graph 3: Percentage of Court Commitments by Age Group; 1995 Compared to 2005..... | 15 |
| Graph 4: Court Commitments by Minimum Sentence Distribution; 2004 and 2005..... | 18 |
| Graph 5: Court Commitments by Maximum Sentence Distribution; 2004 and 2005..... | 19 |
| Graph 6: Incarceration Rates for the Top Ten Counties; 2004 and 2005..... | 25 |
| Graph 7: Offender Population versus State Prison Capacity; 1995 to 2005..... | 28 |
| Graph 8: Monthly Population Change 1995 2000, and 2005..... | 29 |
| Graph 9: Inmate Status as of Year-End; 1995 to 2005..... | 32 |
| Graph 10: Distribution by Release Type; 2004 and 2005..... | 44 |
| Graph 11: Average Time Served by Inmates Released; Calendar Years 1995 through 2005..... | 45 |



Section I

Receptions



Receptions

Between 1995 and 2005, the number of inmates admitted into the Department increased by 49%, from 10,423 in 1995 to 15,534 in 2005. There was a 4.7% increase between the years 2004 and 2005.

From 1995 through 2005, the number of parole violator admissions increased by 51.2%. Over the same period, parole violator admissions as a proportion of the total admissions has remained at approximately 42% of all admissions. Between 2004 and 2005, the number of parole violator admissions increased by 1.2%.

The number of court commitments grew by 45.4%, from 6,073 in 1995 (58.3% of the total admissions), to 8,830 (56.8% of the total admissions) in 2005. Between 2004 and 2005, the number of initial court commitments increased by 4.7%.

Philadelphia County and Allegheny County accounted for 30% of all new court commitments in 2005.

There were 120 more female court commitments in 2005 than in 2004, a 17.6% increase. Male admissions grew by 3.5% (275) between the two years.

The majority of new court commitments (77.7%) were between the ages of 21 and 39. The average age was 32.6. The number of new court commitments age 50 and over increased by 92, or 18.3%, between 2004 and 2005.

While the Department experienced only minor changes in sentence lengths from 2004 to 2005, it is important to note several items of significance.

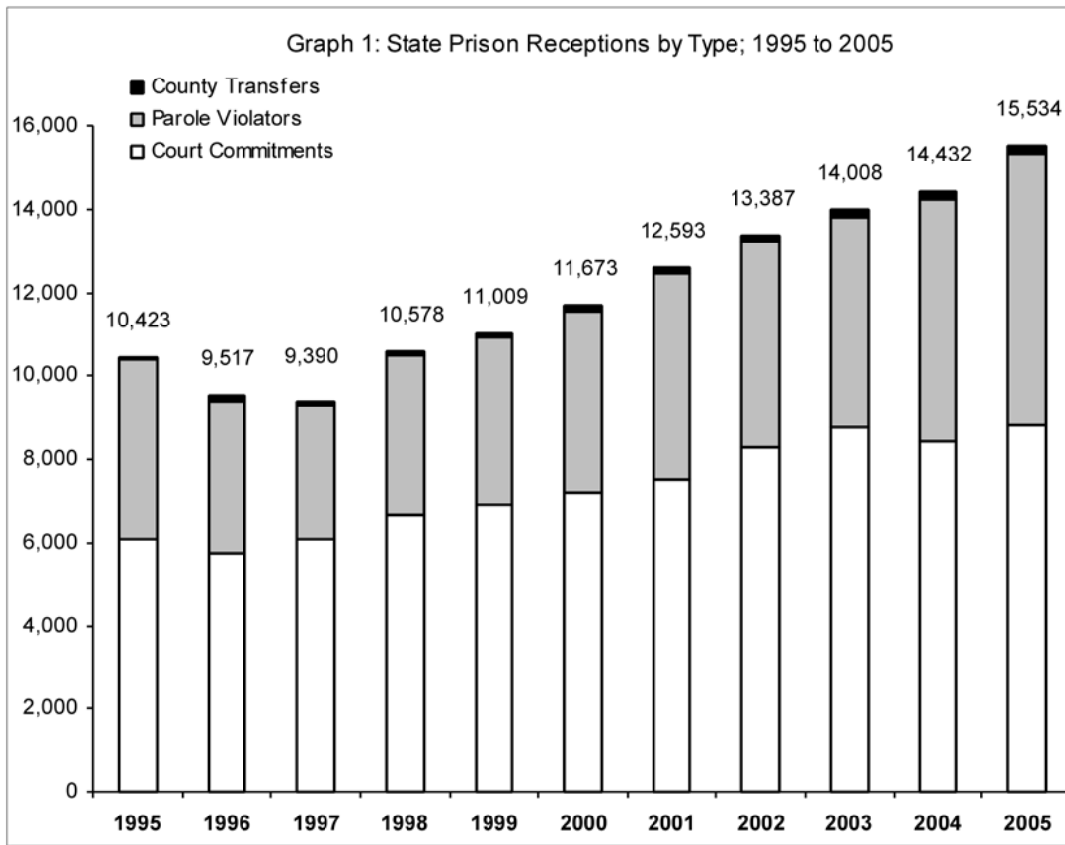
More than half (57.5%) of all court commitments were sentenced to a minimum sentence of two years or less. These inmates may be eligible of some type of release in 2007.

Of the total of new court commitments in 2005, 78.2 % received a maximum sentence of ten years or less. These inmates will complete their sentence and be released back to the community in 2015.

Table 1: State Prison Receptions by Type and Offender Gender, 1995 through 2005

| Year | Court Commitments | | | Parole Violators | | | County Transfers | | | Annual Total |
|------|-------------------|--------|-----------|------------------|--------|-----------|------------------|--------|-----------|--------------|
| | Male | Female | Sub-total | Male | Female | Sub-total | Male | Female | Sub-total | |
| 1995 | 5,683 | 390 | 6,073 | 4,097 | 205 | 4,302 | 47 | 1 | 48 | 10,423 |
| 1996 | 5,375 | 361 | 5,736 | 3,511 | 162 | 3,673 | 107 | 1 | 108 | 9,517 |
| 1997 | 5,636 | 428 | 6,064 | 3,083 | 124 | 3,207 | 117 | 2 | 119 | 9,390 |
| 1998 | 6,155 | 498 | 6,653 | 3,647 | 179 | 3,826 | 98 | 1 | 99 | 10,578 |
| 1999 | 6,416 | 483 | 6,899 | 3,818 | 182 | 4,000 | 107 | 3 | 110 | 11,009 |
| 2000 | 6,680 | 523 | 7,203 | 4,157 | 191 | 4,348 | 121 | 1 | 122 | 11,673 |
| 2001 | 6,924 | 586 | 7,510 | 4,682 | 273 | 4,955 | 122 | 6 | 128 | 12,593 |
| 2002 | 7,633 | 633 | 8,266 | 4,727 | 241 | 4,968 | 150 | 3 | 153 | 13,387 |
| 2003 | 8,067 | 693 | 8,760 | 4,786 | 242 | 5,028 | 215 | 5 | 220 | 14,008 |
| 2004 | 7,752 | 683 | 8,435 | 5,472 | 336 | 5,808 | 186 | 3 | 189 | 14,432 |
| 2005 | 8,027 | 803 | 8,830 | 6,186 | 319 | 6,505 | 196 | 3 | 199 | 15,534 |

Note: Beginning in 1996, County Transfer totals include individuals admitted to the Forensic Psychiatric Unit at SCI Waymart.



Receptions

Table 2: State Prison Receptions by Committing County and Offender Gender in 2005

| County | Court Commitments | | | Parole Violators | | | County Transfers | | | Total | | | % of Total |
|----------------|-------------------|------------|--------------|------------------|------------|--------------|------------------|----------|------------|---------------|--------------|---------------|---------------|
| | Male | Female | Sub-Total | Male | Female | Sub-Total | Male | Female | Sub-Total | Male | Female | Total | |
| Adams | 51 | 6 | 57 | 29 | 1 | 30 | 20 | 0 | 20 | 100 | 7 | 107 | 0.7% |
| Allegheny | 624 | 32 | 656 | 556 | 24 | 580 | 0 | 0 | 0 | 1,180 | 56 | 1,236 | 8.0% |
| Armstrong | 22 | 4 | 26 | 9 | 0 | 9 | 0 | 0 | 0 | 31 | 4 | 35 | 0.2% |
| Beaver | 55 | 10 | 65 | 39 | 3 | 42 | 0 | 0 | 0 | 94 | 13 | 107 | 0.7% |
| Bedford | 27 | 6 | 33 | 3 | 0 | 3 | 0 | 0 | 0 | 30 | 6 | 36 | 0.2% |
| Berks | 371 | 56 | 427 | 228 | 19 | 247 | 1 | 0 | 1 | 600 | 75 | 675 | 4.3% |
| Blair | 61 | 15 | 76 | 33 | 5 | 38 | 0 | 0 | 0 | 94 | 20 | 114 | 0.7% |
| Bradford | 58 | 6 | 64 | 20 | 4 | 24 | 4 | 0 | 4 | 82 | 10 | 92 | 0.6% |
| Bucks | 165 | 9 | 174 | 61 | 3 | 64 | 2 | 0 | 2 | 228 | 12 | 240 | 1.5% |
| Butler | 72 | 10 | 82 | 32 | 5 | 37 | 0 | 0 | 0 | 104 | 15 | 119 | 0.8% |
| Cambria | 55 | 7 | 62 | 38 | 3 | 41 | 0 | 0 | 0 | 93 | 10 | 103 | 0.7% |
| Cameron | 1 | 0 | 1 | 1 | 0 | 1 | 0 | 0 | 0 | 2 | 0 | 2 | 0.0% |
| Carbon | 9 | 0 | 9 | 12 | 0 | 12 | 2 | 0 | 2 | 23 | 0 | 23 | 0.1% |
| Centre | 55 | 1 | 56 | 14 | 1 | 15 | 0 | 0 | 0 | 69 | 2 | 71 | 0.5% |
| Chester | 192 | 14 | 206 | 91 | 1 | 92 | 0 | 0 | 0 | 283 | 15 | 298 | 1.9% |
| Clarion | 19 | 2 | 21 | 8 | 0 | 8 | 0 | 0 | 0 | 27 | 2 | 29 | 0.2% |
| Clearfield | 101 | 10 | 111 | 44 | 6 | 50 | 1 | 0 | 1 | 146 | 16 | 162 | 1.0% |
| Clinton | 17 | 3 | 20 | 5 | 0 | 5 | 2 | 0 | 2 | 24 | 3 | 27 | 0.2% |
| Columbia | 36 | 5 | 41 | 13 | 2 | 15 | 0 | 0 | 0 | 49 | 7 | 56 | 0.4% |
| Crawford | 65 | 9 | 74 | 37 | 1 | 38 | 0 | 0 | 0 | 102 | 10 | 112 | 0.7% |
| Cumberland | 44 | 3 | 47 | 49 | 3 | 52 | 1 | 0 | 1 | 94 | 6 | 100 | 0.6% |
| Dauphin | 345 | 42 | 387 | 400 | 30 | 430 | 0 | 0 | 0 | 745 | 72 | 817 | 5.3% |
| Delaware | 304 | 20 | 324 | 136 | 4 | 140 | 0 | 0 | 0 | 440 | 24 | 464 | 3.0% |
| Elk | 10 | 0 | 10 | 4 | 0 | 4 | 2 | 0 | 2 | 16 | 0 | 16 | 0.1% |
| Erie | 311 | 50 | 361 | 238 | 23 | 261 | 0 | 0 | 0 | 549 | 73 | 622 | 4.0% |
| Fayette | 175 | 35 | 210 | 77 | 4 | 81 | 1 | 0 | 1 | 253 | 39 | 292 | 1.9% |
| Forest | 6 | 0 | 6 | 0 | 0 | 0 | 0 | 0 | 0 | 6 | 0 | 6 | 0.0% |
| Franklin | 91 | 9 | 100 | 82 | 4 | 86 | 0 | 0 | 0 | 173 | 13 | 186 | 1.2% |
| Fulton | 11 | 1 | 12 | 22 | 0 | 22 | 0 | 0 | 0 | 33 | 1 | 34 | 0.2% |
| Greene | 20 | 2 | 22 | 11 | 1 | 12 | 0 | 0 | 0 | 31 | 3 | 34 | 0.2% |
| Huntingdon | 10 | 2 | 12 | 15 | 0 | 15 | 0 | 0 | 0 | 25 | 2 | 27 | 0.2% |
| Indiana | 36 | 6 | 42 | 17 | 3 | 20 | 0 | 0 | 0 | 53 | 9 | 62 | 0.4% |
| Jefferson | 39 | 6 | 45 | 12 | 1 | 13 | 0 | 0 | 0 | 51 | 7 | 58 | 0.4% |
| Juniata | 12 | 2 | 14 | 2 | 0 | 2 | 0 | 0 | 0 | 14 | 2 | 16 | 0.1% |
| Lackawanna | 165 | 23 | 188 | 147 | 14 | 161 | 10 | 0 | 10 | 322 | 37 | 359 | 2.3% |
| Lancaster | 219 | 12 | 231 | 126 | 4 | 130 | 0 | 0 | 0 | 345 | 16 | 361 | 2.3% |
| Lawrence | 63 | 20 | 83 | 47 | 4 | 51 | 0 | 0 | 0 | 110 | 24 | 134 | 0.9% |
| Lebanon | 95 | 11 | 106 | 69 | 3 | 72 | 1 | 0 | 1 | 165 | 14 | 179 | 1.2% |
| Lehigh | 218 | 15 | 233 | 189 | 13 | 202 | 12 | 0 | 12 | 419 | 28 | 447 | 2.9% |
| Luzerne | 147 | 20 | 167 | 102 | 6 | 108 | 0 | 0 | 0 | 249 | 26 | 275 | 1.8% |
| Lycoming | 96 | 17 | 113 | 104 | 9 | 113 | 0 | 0 | 0 | 200 | 26 | 226 | 1.5% |
| Mckean | 25 | 2 | 27 | 9 | 0 | 9 | 0 | 0 | 0 | 34 | 2 | 36 | 0.2% |
| Mercer | 68 | 17 | 85 | 54 | 12 | 66 | 0 | 0 | 0 | 122 | 29 | 151 | 1.0% |
| Mifflin | 25 | 4 | 29 | 12 | 0 | 12 | 0 | 0 | 0 | 37 | 4 | 41 | 0.3% |
| Monroe | 52 | 4 | 56 | 35 | 3 | 38 | 12 | 0 | 12 | 99 | 7 | 106 | 0.7% |
| Montgomery | 271 | 25 | 296 | 184 | 11 | 195 | 16 | 0 | 16 | 471 | 36 | 507 | 3.3% |
| Montour | 7 | 1 | 8 | 3 | 1 | 4 | 0 | 0 | 0 | 10 | 2 | 12 | 0.1% |
| Northampton | 173 | 24 | 197 | 85 | 4 | 89 | 38 | 2 | 40 | 296 | 30 | 326 | 2.1% |
| Northumberland | 84 | 20 | 104 | 71 | 6 | 77 | 1 | 0 | 1 | 156 | 26 | 182 | 1.2% |
| Perry | 21 | 6 | 27 | 18 | 0 | 18 | 0 | 0 | 0 | 39 | 6 | 45 | 0.3% |
| Philadelphia | 1,982 | 88 | 2,070 | 2,119 | 48 | 2,167 | 60 | 1 | 61 | 4,161 | 137 | 4,298 | 27.7% |
| Pike | 17 | 1 | 18 | 9 | 0 | 9 | 1 | 0 | 1 | 27 | 1 | 28 | 0.2% |
| Potter | 8 | 0 | 8 | 5 | 0 | 5 | 0 | 0 | 0 | 13 | 0 | 13 | 0.1% |
| Schuylkill | 40 | 6 | 46 | 23 | 0 | 23 | 0 | 0 | 0 | 63 | 6 | 69 | 0.4% |
| Snyder | 39 | 8 | 47 | 32 | 2 | 34 | 0 | 0 | 0 | 71 | 10 | 81 | 0.5% |
| Somerset | 35 | 4 | 39 | 25 | 1 | 26 | 6 | 0 | 6 | 66 | 5 | 71 | 0.5% |
| Sullivan | 5 | 0 | 5 | 2 | 0 | 2 | 0 | 0 | 0 | 7 | 0 | 7 | 0.0% |
| Susquehanna | 14 | 1 | 15 | 6 | 0 | 6 | 0 | 0 | 0 | 20 | 1 | 21 | 0.1% |
| Tioga | 18 | 1 | 19 | 12 | 2 | 14 | 0 | 0 | 0 | 30 | 3 | 33 | 0.2% |
| Union | 28 | 5 | 33 | 18 | 2 | 20 | 0 | 0 | 0 | 46 | 7 | 53 | 0.3% |
| Venango | 59 | 13 | 72 | 43 | 3 | 46 | 0 | 0 | 0 | 102 | 16 | 118 | 0.8% |
| Warren | 26 | 7 | 33 | 13 | 0 | 13 | 0 | 0 | 0 | 39 | 7 | 46 | 0.3% |
| Washington | 66 | 3 | 69 | 21 | 1 | 22 | 0 | 0 | 0 | 87 | 4 | 91 | 0.6% |
| Wayne | 42 | 8 | 50 | 23 | 1 | 24 | 1 | 0 | 1 | 66 | 9 | 75 | 0.5% |
| Westmoreland | 115 | 11 | 126 | 53 | 6 | 59 | 0 | 0 | 0 | 168 | 17 | 185 | 1.2% |
| Wyoming | 17 | 4 | 21 | 16 | 1 | 17 | 0 | 0 | 0 | 33 | 5 | 38 | 0.2% |
| York | 317 | 39 | 356 | 164 | 11 | 175 | 0 | 0 | 0 | 481 | 50 | 531 | 3.4% |
| Unknown/Others | 0 | 0 | 0 | 9 | 0 | 9 | 2 | 0 | 2 | 11 | 0 | 11 | 0.1% |
| Total | 8,027 | 803 | 8,830 | 6,186 | 319 | 6,505 | 196 | 3 | 199 | 14,409 | 1,125 | 15,534 | 100.0% |

Note: Total may not equal 100% due to rounding.

Table 3: Ten Counties with the Highest Court Commitment Activity in 2005

| Rank | County | Court Commitments | % of State Total |
|------|--------------------|-------------------|------------------|
| 1 | Philadelphia | 2,070 | 23.4% |
| 2 | Allegheny | 656 | 7.4% |
| 3 | Berks | 427 | 4.8% |
| 4 | Dauphin | 387 | 4.4% |
| 5 | Erie | 361 | 4.1% |
| 6 | York | 356 | 4.0% |
| 7 | Delaware | 324 | 3.7% |
| 8 | Montgomery | 296 | 3.4% |
| 9 | Lehigh | 233 | 2.6% |
| 10 | Lancaster | 231 | 2.6% |
| | Sub-Total | 5,341 | 60.5% |
| | Remaining Counties | 3,489 | 39.5% |
| | State Total | 8,830 | 100.0% |

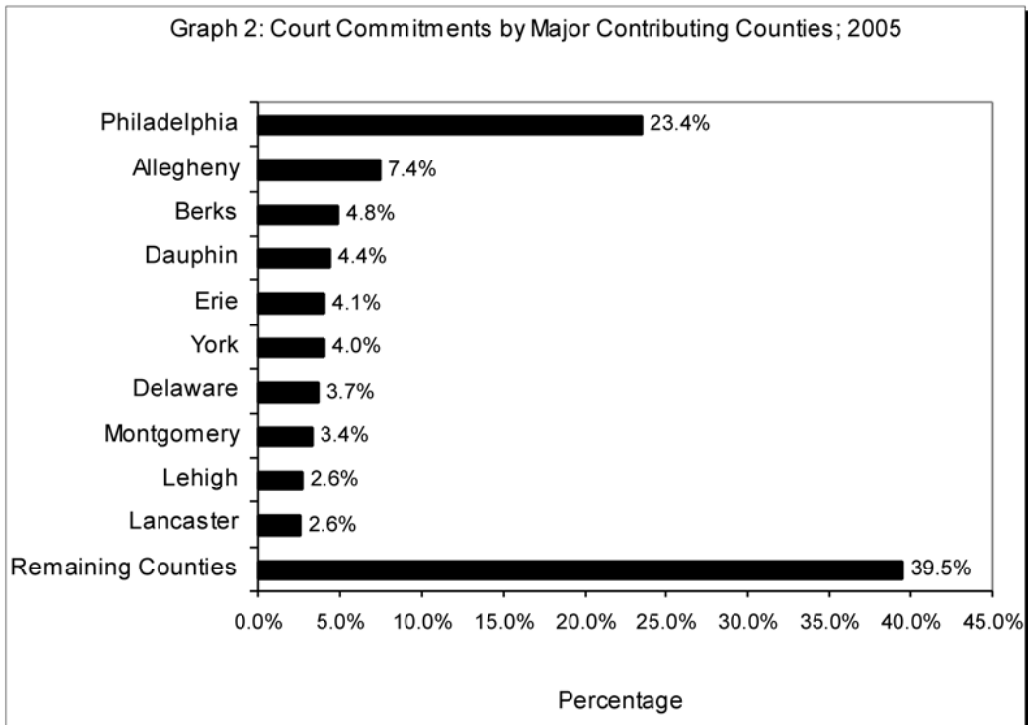
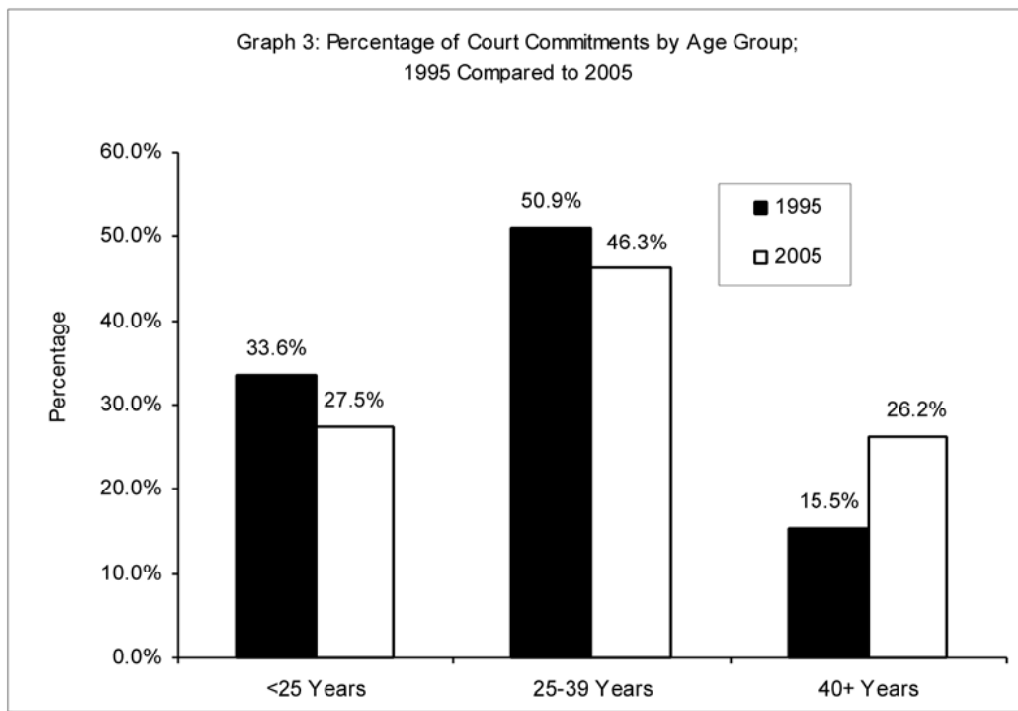


Table 4: Court Commitments by County for 2004 and 2005

| County | Court Commitments | | Growth Factor % |
|----------------|-------------------|--------------|-----------------|
| | 2004 | 2005 | |
| Adams | 56 | 57 | 1.8 |
| Allegheny | 614 | 656 | 6.8 |
| Armstrong | 18 | 26 | 44.4 |
| Beaver | 54 | 65 | 20.4 |
| Bedford | 14 | 33 | 135.7 |
| Berks | 400 | 427 | 6.8 |
| Blair | 97 | 76 | -21.6 |
| Bradford | 55 | 64 | 16.4 |
| Bucks | 183 | 174 | -4.9 |
| Butler | 93 | 82 | -11.8 |
| Cambria | 35 | 62 | 77.1 |
| Cameron | 4 | 1 | -75.0 |
| Carbon | 17 | 9 | -47.1 |
| Centre | 46 | 56 | 21.7 |
| Chester | 222 | 206 | -7.2 |
| Clarion | 24 | 21 | -12.5 |
| Clearfield | 116 | 111 | -4.3 |
| Clinton | 18 | 20 | 11.1 |
| Columbia | 24 | 41 | 70.8 |
| Crawford | 39 | 74 | 89.7 |
| Cumberland | 62 | 47 | -24.2 |
| Dauphin | 427 | 387 | -9.4 |
| Delaware | 303 | 324 | 6.9 |
| Elk | 8 | 10 | 25.0 |
| Erie | 359 | 361 | 0.6 |
| Fayette | 146 | 210 | 43.8 |
| Forest | 5 | 6 | 20.0 |
| Franklin | 96 | 100 | 4.2 |
| Fulton | 10 | 12 | 20.0 |
| Greene | 27 | 22 | -18.5 |
| Huntingdon | 8 | 12 | 50.0 |
| Indiana | 23 | 42 | 82.6 |
| Jefferson | 61 | 45 | -26.2 |
| Juniata | 13 | 14 | 7.7 |
| Lackawanna | 213 | 188 | -11.7 |
| Lancaster | 205 | 231 | 12.7 |
| Lawrence | 58 | 83 | 43.1 |
| Lebanon | 97 | 106 | 9.3 |
| Lehigh | 256 | 233 | -9.0 |
| Luzerne | 166 | 167 | 0.6 |
| Lycoming | 140 | 113 | -19.3 |
| Mckean | 13 | 27 | 107.7 |
| Mercer | 56 | 85 | 51.8 |
| Mifflin | 17 | 29 | 70.6 |
| Monroe | 39 | 56 | 43.6 |
| Montgomery | 230 | 296 | 28.7 |
| Montour | 13 | 8 | -38.5 |
| Northampton | 198 | 197 | -0.5 |
| Northumberland | 86 | 104 | 20.9 |
| Perry | 24 | 27 | 12.5 |
| Philadelphia | 2,013 | 2,070 | 2.8 |
| Pike | 14 | 18 | 28.6 |
| Potter | 3 | 8 | 166.7 |
| Schuylkill | 68 | 46 | -32.4 |
| Snyder | 46 | 47 | 2.2 |
| Somerset | 48 | 39 | -18.8 |
| Sullivan | 3 | 5 | 0.0 |
| Susquehanna | 9 | 15 | 66.7 |
| Tioga | 22 | 19 | -13.6 |
| Union | 31 | 33 | 6.5 |
| Venango | 71 | 72 | 1.4 |
| Warren | 31 | 33 | 6.5 |
| Washington | 46 | 69 | 50.0 |
| Wayne | 42 | 50 | 19.0 |
| Westmoreland | 99 | 126 | 27.3 |
| Wyoming | 25 | 21 | -16.0 |
| York | 373 | 356 | -4.6 |
| Unknown/Others | 3 | 0 | 0.0 |
| Total | 8,435 | 8,830 | 4.7 |

Table 5: Court Commitments Received from 1995 through 2005 by Age Group

| Age | 1995 | 1996 | 1997 | 1998 | 1999 | 2000 | 2001 | 2002 | 2003 | 2004 | 2005 |
|-----------------|--------------|--------------|--------------|--------------|--------------|--------------|--------------|--------------|--------------|--------------|--------------|
| Under 18 | 64 | 51 | 97 | 64 | 44 | 43 | 34 | 32 | 66 | 46 | 25 |
| 18-20 | 672 | 707 | 814 | 738 | 809 | 752 | 707 | 706 | 889 | 883 | 650 |
| 21-24 | 1,305 | 1,189 | 1,323 | 1,455 | 1,476 | 1,643 | 1,650 | 1,793 | 1,845 | 1,769 | 1,749 |
| 25-29 | 1,352 | 1,227 | 1,125 | 1,213 | 1,285 | 1,256 | 1,396 | 1,505 | 1,619 | 1,664 | 1,731 |
| 30-34 | 986 | 937 | 978 | 1,042 | 1,027 | 1,067 | 1,165 | 1,223 | 1,243 | 1,146 | 1,252 |
| 35-39 | 755 | 708 | 767 | 892 | 947 | 986 | 949 | 1,144 | 1,135 | 978 | 1,107 |
| 40-44 | 463 | 420 | 457 | 608 | 668 | 725 | 769 | 894 | 902 | 916 | 1,018 |
| 45-49 | 226 | 248 | 259 | 319 | 336 | 420 | 451 | 541 | 555 | 530 | 703 |
| 50-54 | 119 | 125 | 138 | 149 | 174 | 179 | 204 | 239 | 283 | 292 | 318 |
| 55-59 | 56 | 55 | 55 | 91 | 82 | 70 | 109 | 101 | 129 | 125 | 167 |
| 60-64 | 41 | 32 | 29 | 49 | 29 | 34 | 46 | 53 | 51 | 47 | 67 |
| 65 and Over | 34 | 37 | 22 | 33 | 22 | 28 | 30 | 35 | 43 | 39 | 43 |
| Total | 6,073 | 5,736 | 6,064 | 6,653 | 6,899 | 7,203 | 7,510 | 8,266 | 8,760 | 8,435 | 8,830 |
| Average | 30.6 | 30.7 | 29.9 | 30.7 | 30.8 | 31.1 | 30.8 | 32.0 | 32.0 | 32.8 | 32.6 |
| % Under 25 | 33.6 | 33.9 | 36.8 | 33.9 | 33.8 | 33.8 | 31.8 | 30.6 | 32.0 | 32.0 | 27.5 |
| % 25 - 39 Years | 50.9 | 50.1 | 47.3 | 47.3 | 47.2 | 45.9 | 46.7 | 46.8 | 45.6 | 44.9 | 46.3 |
| % 40 and Over | 15.5 | 16.0 | 15.8 | 18.8 | 19.0 | 20.2 | 21.4 | 22.5 | 22.4 | 23.1 | 26.2 |



Receptions

Table 6: Profile of Court Commitments Received by Age, Race, and Gender in 2004

| Age | Race | | | | | | | | Gender | | | | Total |
|---------------|--------------|--------------|--------------|--------------|--------------|--------------|-----------|-------------|--------------|--------------|------------|-------------|--------------|
| | White | | Black | | Hispanic | | Other | | Male | | Female | | |
| | Number | % | Number | % | Number | % | Number | % | Number | % | Number | % | |
| Under 18 | 7 | 0.1% | 31 | 0.4% | 8 | 0.1% | 0 | 0.0% | 45 | 0.5% | 1 | 0.0% | 46 |
| 18-20 | 291 | 3.4% | 461 | 5.5% | 125 | 1.5% | 6 | 0.1% | 840 | 10.0% | 43 | 0.5% | 883 |
| 21-24 | 709 | 8.4% | 837 | 9.9% | 214 | 2.5% | 9 | 0.1% | 1,691 | 20.0% | 78 | 0.9% | 1,769 |
| 25-29 | 645 | 7.6% | 738 | 8.7% | 272 | 3.2% | 9 | 0.1% | 1,544 | 18.3% | 120 | 1.4% | 1,664 |
| 30-34 | 509 | 6.0% | 463 | 5.5% | 167 | 2.0% | 7 | 0.1% | 1,029 | 12.2% | 117 | 1.4% | 1,146 |
| 35-39 | 467 | 5.5% | 391 | 4.6% | 116 | 1.4% | 4 | 0.0% | 876 | 10.4% | 102 | 1.2% | 978 |
| 40-44 | 447 | 5.3% | 379 | 4.5% | 83 | 1.0% | 7 | 0.1% | 809 | 9.6% | 107 | 1.3% | 916 |
| 45-49 | 271 | 3.2% | 201 | 2.4% | 57 | 0.7% | 1 | 0.0% | 462 | 5.5% | 68 | 0.8% | 530 |
| 50-54 | 152 | 1.8% | 108 | 1.3% | 28 | 0.3% | 4 | 0.0% | 266 | 3.2% | 26 | 0.3% | 292 |
| 55-59 | 62 | 0.7% | 51 | 0.6% | 10 | 0.1% | 2 | 0.0% | 111 | 1.3% | 14 | 0.2% | 125 |
| 60-64 | 30 | 0.4% | 12 | 0.1% | 5 | 0.1% | 0 | 0.0% | 42 | 0.5% | 5 | 0.1% | 47 |
| 65 and Over | 25 | 0.3% | 11 | 0.1% | 3 | 0.0% | 0 | 0.0% | 37 | 0.4% | 2 | 0.0% | 39 |
| Total | 3,615 | 42.9% | 3,683 | 43.7% | 1,088 | 12.9% | 49 | 0.6% | 7,752 | 91.9% | 683 | 8.1% | 8,435 |
| Average Age | 34.0 | - | 31.0 | - | 30.0 | - | 30.0 | - | 31.3 | - | 34.5 | - | 32.8 |
| % Under 25 | 27.9% | - | 36.1% | - | 31.9% | - | 30.6% | - | 33.2% | - | 32.0% | - | 32.0% |
| % 40 and Over | 27.3% | - | 20.7% | - | 17.1% | - | 28.6% | - | 22.3% | - | 23.1% | - | 23.1% |

Table 7: Profile of Court Commitments Received by Age, Race, and Gender in 2005

| Age | Race | | | | | | | | Gender | | | | Total |
|--------------|--------------|--------------|--------------|--------------|------------|--------------|-----------|-------------|--------------|--------------|------------|-------------|--------------|
| | White | | Black | | Hispanic | | Other | | Male | | Female | | |
| | Number | % | Number | % | Number | % | Number | % | Number | % | Number | % | |
| Under 18 | 6 | 0.1% | 17 | 0.2% | 1 | 0.0% | 1 | 0.0% | 23 | 0.3% | 2 | 0.0% | 25 |
| 18-20 | 220 | 2.5% | 356 | 4.0% | 72 | 0.8% | 2 | 0.0% | 620 | 7.0% | 30 | 0.3% | 650 |
| 21-24 | 699 | 7.9% | 860 | 9.7% | 176 | 2.0% | 14 | 0.2% | 1,614 | 18.3% | 135 | 1.5% | 1,749 |
| 25-29 | 707 | 8.0% | 781 | 8.8% | 233 | 2.6% | 10 | 0.1% | 1,604 | 18.2% | 127 | 1.4% | 1,731 |
| 30-34 | 549 | 6.2% | 534 | 6.0% | 162 | 1.8% | 7 | 0.1% | 1,139 | 12.9% | 113 | 1.3% | 1,252 |
| 35-39 | 509 | 5.8% | 449 | 5.1% | 141 | 1.6% | 8 | 0.1% | 973 | 11.0% | 134 | 1.5% | 1,107 |
| 40-44 | 561 | 6.4% | 371 | 4.2% | 82 | 0.9% | 4 | 0.0% | 875 | 9.9% | 143 | 1.6% | 1,018 |
| 45-49 | 378 | 4.3% | 260 | 2.9% | 64 | 0.7% | 1 | 0.0% | 628 | 7.1% | 75 | 0.8% | 703 |
| 50-54 | 167 | 1.9% | 121 | 1.4% | 27 | 0.3% | 3 | 0.0% | 290 | 3.3% | 28 | 0.3% | 318 |
| 55-59 | 99 | 1.1% | 49 | 0.6% | 18 | 0.2% | 1 | 0.0% | 153 | 1.7% | 14 | 0.2% | 167 |
| 60-64 | 39 | 0.4% | 21 | 0.2% | 7 | 0.1% | 0 | 0.0% | 66 | 0.7% | 1 | 0.0% | 67 |
| 65 and Over | 34 | 0.4% | 7 | 0.1% | 2 | 0.0% | 0 | 0.0% | 42 | 0.5% | 1 | 0.0% | 43 |
| Total | 3,968 | 44.9% | 3,826 | 43.3% | 985 | 11.2% | 51 | 0.6% | 8,027 | 90.9% | 803 | 9.1% | 8,830 |
| Average Age | 34.2 | - | 31.2 | - | 31.8 | - | 31.2 | - | 32.5 | - | 34.2 | - | 32.6 |
| % Under 25 | 23.3% | - | 32.2% | - | 25.3% | - | 33.3% | - | 28.1% | - | 20.8% | - | 27.5% |
| % 40 & Over | 32.2% | - | 21.7% | - | 20.3% | - | 17.6% | - | 25.6% | - | 32.6% | - | 26.2% |

Table 8: Comparison of Court Commitments by Offense for 2004 and 2005

| Part I Offenses | 2004 | | 2005 | | Change 2004-2005 | |
|-------------------------------|--------------|---------------|--------------|---------------|------------------|-------------|
| | Number | % | Number | % | Number | % |
| Murder | | | | | | |
| First Degree | 94 | 1.1% | 101 | 1.1% | 7 | 7.4% |
| Second Degree | 25 | 0.3% | 28 | 0.3% | 3 | 12.0% |
| Third Degree | 212 | 2.5% | 166 | 1.9% | -46 | -21.7% |
| Unspecified | 55 | 0.7% | 39 | 0.4% | -16 | -29.1% |
| Manslaughter | | | | | | |
| Voluntary | 17 | 0.2% | 30 | 0.3% | 13 | 76.5% |
| Involuntary | 26 | 0.3% | 19 | 0.2% | -7 | -26.9% |
| Aggravated Assault | 570 | 6.8% | 606 | 6.9% | 36 | 6.3% |
| Arson | 41 | 0.5% | 38 | 0.4% | -3 | -7.3% |
| Burglary | 483 | 5.7% | 527 | 6.0% | 44 | 9.1% |
| Forcible Rape | 266 | 3.2% | 232 | 2.6% | -34 | -12.8% |
| Homicide by Vehicle | 53 | 0.6% | 70 | 0.8% | 17 | 32.1% |
| Robbery | 727 | 8.6% | 805 | 9.1% | 78 | 10.7% |
| Theft/Larceny | 414 | 4.9% | 471 | 5.3% | 57 | 13.8% |
| Total Part I Offenses | 2,983 | 35.4% | 3,132 | 35.5% | 149 | 5.0% |
| Part II Offenses | | | | | | |
| DUI | 187 | 2.2% | 124 | 1.4% | -63 | -33.7% |
| Forgery | 115 | 1.4% | 121 | 1.4% | 6 | 5.2% |
| Fraud | 93 | 1.1% | 112 | 1.3% | 19 | 20.4% |
| Kidnapping | 13 | 0.2% | 21 | 0.2% | 8 | 61.5% |
| Narcotic Drug Laws | 2,609 | 30.9% | 2,801 | 31.7% | 192 | 7.4% |
| Other Assaults | 152 | 1.8% | 146 | 1.7% | -6 | -3.9% |
| Other Sex Offenses | 70 | 0.8% | 94 | 1.1% | 24 | 34.3% |
| Prison Breach | 132 | 1.6% | 116 | 1.3% | -16 | -12.1% |
| Receiving Stolen Property | 178 | 2.1% | 126 | 1.4% | -52 | -29.2% |
| Statutory Rape | 93 | 1.1% | 92 | 1.0% | -1 | -1.1% |
| Weapons | 143 | 1.7% | 171 | 1.9% | 28 | 19.6% |
| Other Part II Offenses | 1,659 | 19.7% | 1,774 | 20.1% | 115 | 6.9% |
| Total Part II Offenses | 5,444 | 64.5% | 5,698 | 64.5% | 254 | 4.7% |
| Other | 8 | 0.1% | 0 | 0.0% | -8 | -100.0% |
| Total Offenses | 8,435 | 100.0% | 8,830 | 100.0% | 395 | 4.7% |

Table 9: Court Commitments by Minimum Sentence and Offender Gender in 2005

| Minimum Sentence | Male | | Female | | Total | |
|-----------------------------|--------------|---------------|------------|---------------|--------------|---------------|
| | Number | % | Number | % | Number | % |
| 1 Year And Under | 1,846 | 23.0% | 343 | 42.7% | 2,189 | 24.8% |
| Over 1 To 2 Years | 2,610 | 32.5% | 277 | 34.5% | 2,887 | 32.7% |
| Over 2 To 3 Years | 1,420 | 17.7% | 89 | 11.1% | 1,509 | 17.1% |
| Over 3 To 5 Years | 1,107 | 13.8% | 48 | 6.0% | 1,155 | 13.1% |
| Over 5 To 10 Years | 591 | 7.4% | 19 | 2.4% | 610 | 6.9% |
| Over 10 To 20 Years | 223 | 2.8% | 11 | 1.4% | 234 | 2.7% |
| Over 20 Years | 84 | 1.0% | 4 | 0.5% | 88 | 1.0% |
| Life | 127 | 1.6% | 7 | 0.9% | 134 | 1.5% |
| Death Sentence | 5 | 0.1% | 1 | 0.1% | 6 | 0.1% |
| Not Reported As Of Year End | 14 | 0.2% | 4 | 0.5% | 18 | 0.2% |
| Total | 8,027 | 100.0% | 803 | 100.0% | 8,830 | 100.0% |

Note: Totals may not equal 100% due to rounding.

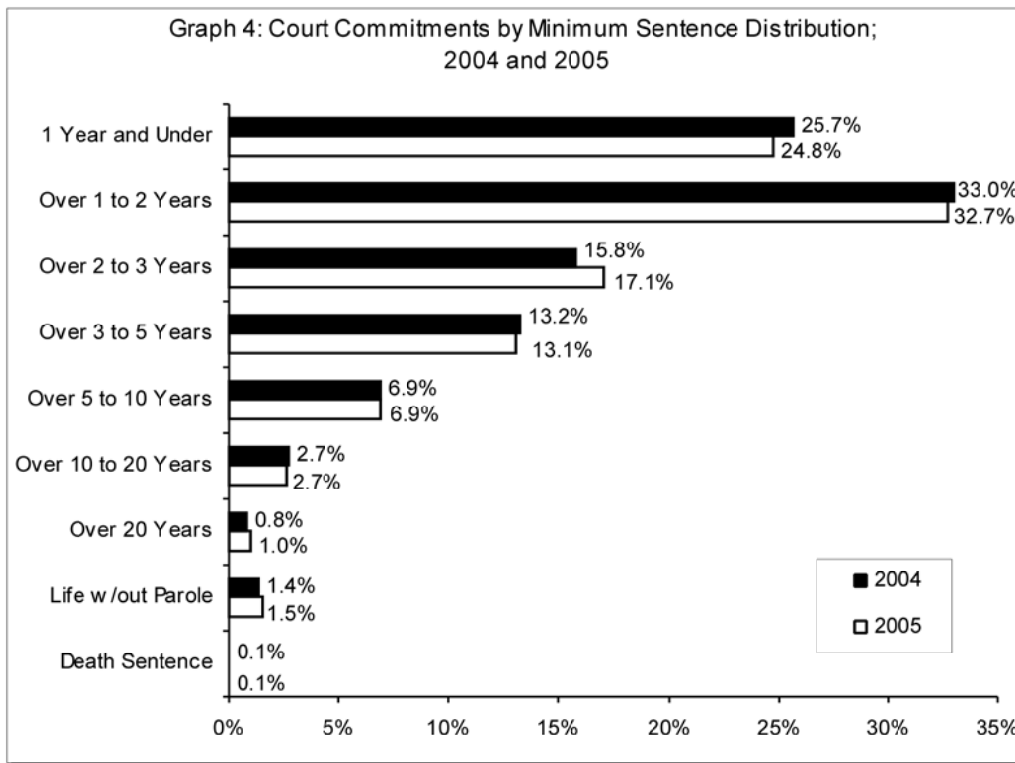
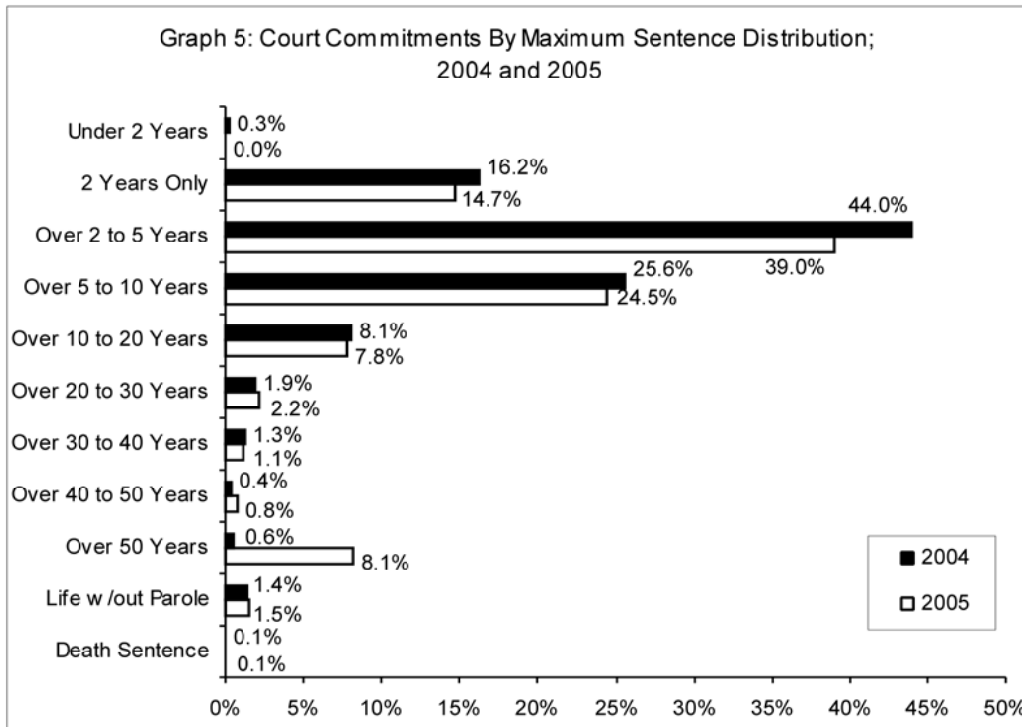


Table 10: Court Commitments by Maximum Sentence and Offender Gender in 2005

| Maximum Sentence | Male | | Female | | Total | |
|-----------------------------|--------------|---------------|------------|---------------|--------------|---------------|
| | Number | % | Number | % | Number | % |
| Under 2 Years | 1 | 0.0% | 3 | 0.4% | 4 | 0.0% |
| 2 Years Only | 1,124 | 14.0% | 176 | 21.9% | 1,300 | 14.7% |
| Over 2 to 5 Years | 3,091 | 38.5% | 354 | 44.1% | 3,445 | 39.0% |
| Over 5 to 10 Years | 2,027 | 25.3% | 132 | 16.4% | 2,159 | 24.5% |
| Over 10 to 20 Years | 661 | 8.2% | 25 | 3.1% | 686 | 7.8% |
| Over 20 to 30 Years | 174 | 2.2% | 17 | 2.1% | 191 | 2.2% |
| Over 30 to 40 Years | 91 | 1.1% | 7 | 0.9% | 98 | 1.1% |
| Over 40 to 50 Years | 68 | 0.8% | 2 | 0.2% | 70 | 0.8% |
| Over 50 Years | 644 | 8.0% | 75 | 9.3% | 719 | 8.1% |
| Life | 127 | 1.6% | 7 | 0.9% | 134 | 1.5% |
| Death Sentence | 5 | 0.1% | 1 | 0.1% | 6 | 0.1% |
| Not Reported as of Year End | 14 | 0.2% | 4 | 0.5% | 18 | 0.2% |
| Total | 8,027 | 100.0% | 803 | 100.0% | 8,830 | 100.0% |

Note: Totals may not equal 100% due to rounding.



Receptions

Table 11: Profile of Offenders Serving a Life Sentence Received from 1995 through 2005

| Commmitting County | Calendar Year | | | | | | | | | | |
|--------------------|---------------|------------|------------|------------|------------|------------|------------|------------|------------|------------|------------|
| | 1995 | 1996 | 1997 | 1998 | 1999 | 2000 | 2001 | 2002 | 2003 | 2004 | 2005 |
| Philadelphia | 67 | 61 | 67 | 50 | 67 | 47 | 51 | 42 | 46 | 58 | 58 |
| Allegheny | 19 | 22 | 16 | 24 | 13 | 15 | 19 | 14 | 14 | 17 | 19 |
| Other Counties | 66 | 60 | 70 | 120 | 63 | 54 | 54 | 56 | 61 | 57 | 57 |
| Total | 152 | 143 | 153 | 194 | 143 | 116 | 124 | 112 | 121 | 132 | 134 |
| Age | 1995 | 1996 | 1997 | 1998 | 1999 | 2000 | 2001 | 2002 | 2003 | 2004 | 2005 |
| Under 20 | 28 | 32 | 20 | 10 | 27 | 11 | 6 | 7 | 15 | 7 | 13 |
| 20 To 24 | 50 | 50 | 51 | 58 | 40 | 46 | 44 | 36 | 39 | 47 | 41 |
| 25 To 29 | 34 | 24 | 26 | 26 | 26 | 22 | 27 | 30 | 23 | 32 | 24 |
| 30 To 34 | 13 | 11 | 26 | 20 | 11 | 9 | 13 | 12 | 12 | 14 | 23 |
| 35 To 39 | 13 | 15 | 14 | 25 | 22 | 6 | 13 | 7 | 15 | 11 | 11 |
| 40 To 44 | 5 | 7 | 5 | 12 | 8 | 10 | 10 | 6 | 6 | 9 | 6 |
| 45 and Over | 9 | 4 | 11 | 43 | 9 | 12 | 11 | 14 | 11 | 12 | 16 |
| Average | 27.40 | 26.50 | 28.10 | 33.40 | 28.50 | 28.50 | 29.80 | 30.00 | 29.58 | 29.08 | 30.40 |
| Race | 1995 | 1996 | 1997 | 1998 | 1999 | 2000 | 2001 | 2002 | 2003 | 2004 | 2005 |
| White | 36 | 26 | 50 | 99 | 39 | 36 | 35 | 34 | 29 | 37 | 26 |
| Non-White | 116 | 117 | 103 | 95 | 104 | 80 | 89 | 78 | 92 | 95 | 108 |
| Gender | 1995 | 1996 | 1997 | 1998 | 1999 | 2000 | 2001 | 2002 | 2003 | 2004 | 2005 |
| Male | 140 | 139 | 149 | 185 | 141 | 107 | 122 | 110 | 116 | 127 | 127 |
| Female | 12 | 4 | 4 | 9 | 2 | 9 | 2 | 2 | 5 | 5 | 7 |
| Total | 152 | 143 | 153 | 194 | 143 | 116 | 124 | 112 | 121 | 132 | 134 |



Section II

Population



Population

The overall incarceration rate in Pennsylvania remained stable at 329.8 per 100,000 state residents in 2004 and 342.5 per 100,000 in 2005. Nationally, the incarceration rate of state prisoners was 491 per 100,000 residents for yearend 2005 (U.S. Bureau of Justice Statistics).

From 1995 to 2005, the number of inmates incarcerated has increased by 31.1%. The Department experienced a 9.6% increase in inmate population between 2004 and 2005. The total inmate population was 41,000 on December 31, 2004 and 42,486 on December 31, 2005.

From 1995 to 2005, the number of sentenced offenders increased by 30.65% and the number of parole violators increased by 31.8%.

At the end of 2005, the population was comprised of 81.9% sentenced offenders and 17.9% parole violators.

A demographic breakdown of the Department's inmates indicates that offender age, race, and gender have remained relatively constant over the 2004 to 2005.

The average age of a DOC offender in 2005 was 36, and half of the offenders were within the ages of 25 - 39 years.

In 2005, the majority of DOC offenders were African Americans (50.9%), followed by Caucasians (37.4%), Hispanics (11.0%), and other races (0.7%).

Of the 42,486 offenders in the DOC population as of calendar year-end 2005, 40,454 were males and 2,032 were females.

In 2005, the average minimum sentence length for Part One Offenders was 9.2 years and the average maximum sentence length was 20.3 years. For Part Two Offenders, the average minimum sentence length was 3.7 years and the average maximum sentence length was 8.5 years.

The number of inmates serving a minimum sentence of more than 20 years (excluding inmates serving life sentences and capital cases) increased by 7.1% from 1,260 in 2004 to 1,349 in 2005.

The following are characteristics of offenders serving life sentences in the Department:

The number of offenders serving a life sentence increased by 3.1%, from 4,091 in 2004 to 4,216 in 2005.

The average age of inmates serving life sentences in 2005 was 42.4 years. The average age of inmates serving life sentences remains higher than the average for the total population (42.4 years versus 36.0 years respectively).

Table 12: Rank Order of Ten Counties with Highest State Incarceration Rate for 2002 and 2003*

| Ranking | County | Incarceration Rate for 2004 | Incarceration Rate for 2005 | Percent Change |
|---------|--------------|-----------------------------|-----------------------------|----------------|
| 1 | Philadelphia | 1003.8 | 1005.0 | 0.1% |
| 2 | Dauphin | 716.4 | 746.4 | 4.2% |
| 3 | Erie | 500.6 | 525.7 | 5.0% |
| 4 | Venango | 504.0 | 505.9 | 0.4% |
| 5 | Lycoming | 427.0 | 407.3 | -4.6% |
| 6 | Snyder | 359.5 | 403.2 | 12.1% |
| 7 | Fayette | 338.5 | 396.7 | 17.2% |
| 8 | Berks | 356.1 | 380.3 | 6.8% |
| 9 | Clearfield | 348.7 | 367.9 | 5.5% |
| 10 | Fulton | 315.7 | 361.7 | 14.6% |

* Ranking by 2005 incarceration rate per 100,000 residents. Note: incarceration rate calculations are based on the number of offenders incarcerated in the state prison system for each committing county. This rate does not include county or federal inmates.

* Data based on estimated population and Census data provided by the Pennsylvania State Data Center.

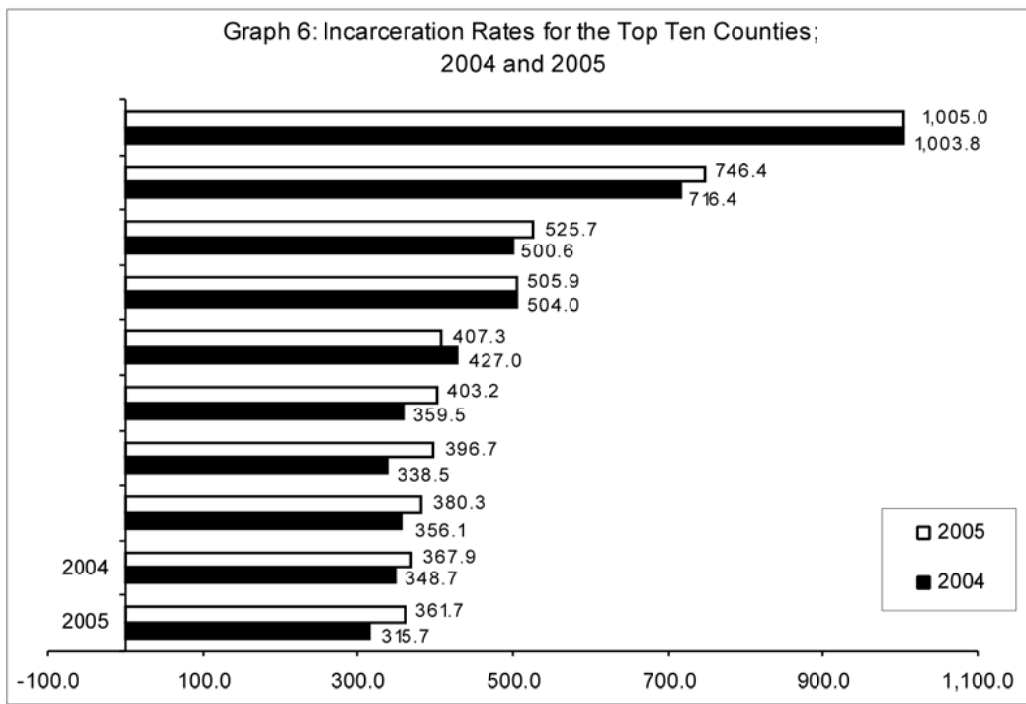


Table 13: Inmate Population by County and Gender on December 31; Calendar Years 2004 and 2005

| County | December 31, 2004 | | | | December 31, 2005 | | | |
|----------------|-------------------|--------------|---------------|---------------|-------------------|--------------|---------------|---------------|
| | Male | Female | Total | % of Total | Male | Female | Total | % of Total |
| Adams | 173 | 11 | 184 | 0.4% | 195 | 9 | 204 | 0.5% |
| Allegheny | 3,448 | 117 | 3,565 | 8.7% | 3,523 | 120 | 3,643 | 8.6% |
| Armstrong | 78 | 3 | 81 | 0.2% | 81 | 6 | 87 | 0.2% |
| Beaver | 290 | 10 | 300 | 0.7% | 288 | 15 | 303 | 0.7% |
| Bedford | 49 | 3 | 52 | 0.1% | 67 | 8 | 75 | 0.2% |
| Berks | 1,291 | 103 | 1,394 | 3.4% | 1,390 | 117 | 1,507 | 3.5% |
| Blair | 259 | 43 | 302 | 0.7% | 254 | 39 | 293 | 0.7% |
| Bradford | 169 | 9 | 178 | 0.4% | 201 | 13 | 214 | 0.5% |
| Bucks | 703 | 30 | 733 | 1.8% | 761 | 33 | 794 | 1.9% |
| Butler | 272 | 15 | 287 | 0.7% | 280 | 24 | 304 | 0.7% |
| Cambria | 181 | 11 | 192 | 0.5% | 217 | 16 | 233 | 0.5% |
| Cameron | 7 | 0 | 7 | 0.0% | 10 | 0 | 10 | 0.0% |
| Carbon | 82 | 3 | 85 | 0.2% | 75 | 1 | 76 | 0.2% |
| Centre | 196 | 11 | 207 | 0.5% | 222 | 10 | 232 | 0.5% |
| Chester | 825 | 36 | 861 | 2.1% | 887 | 41 | 928 | 2.2% |
| Clarion | 68 | 3 | 71 | 0.2% | 70 | 4 | 74 | 0.2% |
| Clearfield | 264 | 25 | 289 | 0.7% | 277 | 27 | 304 | 0.7% |
| Clinton | 63 | 4 | 67 | 0.2% | 69 | 6 | 75 | 0.2% |
| Columbia | 92 | 7 | 99 | 0.2% | 99 | 11 | 110 | 0.3% |
| Crawford | 201 | 18 | 219 | 0.5% | 236 | 18 | 254 | 0.6% |
| Cumberland | 272 | 11 | 283 | 0.7% | 275 | 13 | 288 | 0.7% |
| Dauphin | 1,696 | 117 | 1,813 | 4.4% | 1,766 | 122 | 1,888 | 4.4% |
| Delaware | 1,341 | 44 | 1,385 | 3.4% | 1,373 | 53 | 1,426 | 3.4% |
| Elk | 40 | 2 | 42 | 0.1% | 38 | 1 | 39 | 0.1% |
| Erie | 1,332 | 74 | 1,406 | 3.4% | 1,372 | 101 | 1,473 | 3.5% |
| Fayette | 466 | 31 | 497 | 1.2% | 530 | 50 | 580 | 1.4% |
| Forest | 19 | 0 | 19 | 0.0% | 22 | 0 | 22 | 0.1% |
| Franklin | 386 | 22 | 408 | 1.0% | 410 | 26 | 436 | 1.0% |
| Fulton | 42 | 4 | 46 | 0.1% | 49 | 4 | 53 | 0.1% |
| Greene | 76 | 4 | 80 | 0.2% | 83 | 6 | 89 | 0.2% |
| Huntingdon | 53 | 5 | 58 | 0.1% | 56 | 7 | 63 | 0.1% |
| Indiana | 122 | 5 | 127 | 0.3% | 119 | 10 | 129 | 0.3% |
| Jefferson | 113 | 13 | 126 | 0.3% | 132 | 16 | 148 | 0.3% |
| Juniata | 37 | 5 | 42 | 0.1% | 40 | 3 | 43 | 0.1% |
| Lackawanna | 559 | 36 | 595 | 1.5% | 609 | 44 | 653 | 1.5% |
| Lancaster | 943 | 49 | 992 | 2.4% | 999 | 51 | 1,050 | 2.5% |
| Lawrence | 208 | 14 | 222 | 0.5% | 226 | 27 | 253 | 0.6% |
| Lebanon | 365 | 21 | 386 | 0.9% | 405 | 26 | 431 | 1.0% |
| Lehigh | 1,035 | 55 | 1,090 | 2.7% | 1,050 | 55 | 1,105 | 2.6% |
| Luzerne | 540 | 42 | 582 | 1.4% | 604 | 44 | 648 | 1.5% |
| Lycoming | 457 | 49 | 506 | 1.2% | 439 | 42 | 481 | 1.1% |
| Mckean | 77 | 3 | 80 | 0.2% | 86 | 4 | 90 | 0.2% |
| Mercer | 287 | 23 | 310 | 0.8% | 278 | 32 | 310 | 0.7% |
| Mifflin | 75 | 7 | 82 | 0.2% | 75 | 9 | 84 | 0.2% |
| Monroe | 196 | 13 | 209 | 0.5% | 220 | 16 | 236 | 0.6% |
| Montgomery | 1,131 | 49 | 1,180 | 2.9% | 1,199 | 56 | 1,255 | 3.0% |
| Montour | 27 | 5 | 32 | 0.1% | 30 | 2 | 32 | 0.1% |
| Northampton | 545 | 42 | 587 | 1.4% | 597 | 44 | 641 | 1.5% |
| Northumberland | 277 | 24 | 301 | 0.7% | 296 | 37 | 333 | 0.8% |
| Perry | 94 | 13 | 107 | 0.3% | 99 | 13 | 112 | 0.3% |
| Philadelphia | 14,374 | 394 | 14,768 | 36.0% | 14,259 | 377 | 14,636 | 34.4% |
| Pike | 54 | 5 | 59 | 0.1% | 65 | 4 | 69 | 0.2% |
| Potter | 30 | 0 | 30 | 0.1% | 30 | 0 | 30 | 0.1% |
| Schuylkill | 173 | 13 | 186 | 0.5% | 170 | 13 | 183 | 0.4% |
| Snyder | 125 | 12 | 137 | 0.3% | 135 | 18 | 153 | 0.4% |
| Somerset | 131 | 9 | 140 | 0.3% | 127 | 10 | 137 | 0.3% |
| Sullivan | 12 | 0 | 12 | 0.0% | 14 | 0 | 14 | 0.0% |
| Susquehanna | 66 | 4 | 70 | 0.2% | 68 | 3 | 71 | 0.2% |
| Tioga | 84 | 1 | 85 | 0.2% | 85 | 1 | 86 | 0.2% |
| Union | 88 | 4 | 92 | 0.2% | 96 | 7 | 103 | 0.2% |
| Venango | 264 | 19 | 283 | 0.7% | 262 | 21 | 283 | 0.7% |
| Warren | 79 | 10 | 89 | 0.2% | 89 | 12 | 101 | 0.2% |
| Washington | 234 | 11 | 245 | 0.6% | 258 | 10 | 268 | 0.6% |
| Wayne | 137 | 6 | 143 | 0.3% | 140 | 11 | 151 | 0.4% |
| Westmoreland | 402 | 24 | 426 | 1.0% | 458 | 30 | 488 | 1.1% |
| Wyoming | 70 | 6 | 76 | 0.2% | 83 | 6 | 89 | 0.2% |
| York | 1,269 | 58 | 1,327 | 3.2% | 1,344 | 73 | 1,417 | 3.3% |
| Unknown/ Other | 60 | 6 | 66 | 0.2% | 92 | 4 | 93 | 0.2% |
| Total | 39,175 | 1,826 | 41,000 | 100.0% | 40,454 | 2,032 | 42,486 | 100.0% |

Note: Totals may not equal 100% due to rounding.

Table 14: Rank-Ordered Comparison of Civilian Population and State Incarceration Rates for 2004 and 2005

| County | 2004 | | | 2005 | | |
|----------------|----------------------|------------------|------|----------------------|------------------|------|
| | Civilian Population* | Rate per 100,000 | Rank | Civilian Population* | Rate per 100,000 | Rank |
| Philadelphia | 1,479,339 | 1039.6 | 1 | 1,456,350 | 1005.0 | 1 |
| Dauphin | 253,388 | 698.5 | 2 | 252,949 | 746.4 | 2 |
| Erie | 279,966 | 486.8 | 3 | 280,184 | 525.7 | 3 |
| Venango | 56,600 | 480.6 | 5 | 55,938 | 505.9 | 4 |
| Lycoming | 118,438 | 390.9 | 7 | 118,102 | 407.3 | 5 |
| Snyder | 38,015 | 347.2 | 9 | 37,949 | 403.2 | 6 |
| Fayette | 146,121 | 316.2 | 13 | 146,206 | 396.7 | 7 |
| Berks | 385,307 | 353.0 | 8 | 396,236 | 380.3 | 8 |
| Clearfield | 82,874 | 317.3 | 12 | 82,634 | 367.9 | 9 |
| Fulton | 14,534 | 392.2 | 6 | 14,655 | 361.7 | 10 |
| Northumberland | 93,323 | 310.7 | 14 | 92,280 | 360.9 | 11 |
| York | 394,915 | 318.0 | 11 | 408,182 | 347.1 | 12 |
| Lebanon | 122,652 | 299.2 | 15 | 125,429 | 343.6 | 13 |
| Bradford | 62,643 | 245.8 | 22 | 62,504 | 342.4 | 14 |
| Forest | 4,989 | 481.1 | 4 | 6,507 | 338.1 | 15 |
| Lehigh | 320,517 | 330.4 | 10 | 330,168 | 334.7 | 16 |
| Jefferson | 45,945 | 202.4 | 31 | 45,716 | 323.7 | 17 |
| Franklin | 133,155 | 297.4 | 16 | 137,273 | 317.6 | 18 |
| Wyoming | 28,153 | 234.4 | 24 | 28,122 | 316.5 | 19 |
| Lackawanna | 210,458 | 264.2 | 20 | 209,622 | 311.5 | 20 |
| Wayne | 49,092 | 295.4 | 17 | 50,529 | 298.8 | 21 |
| Allegheny | 1,261,303 | 285.6 | 19 | 1,233,036 | 295.4 | 22 |
| Crawford | 89,846 | 247.1 | 21 | 89,484 | 283.8 | 23 |
| Lawrence | 93,408 | 230.2 | 25 | 92,412 | 273.8 | 24 |
| Mercer | 119,895 | 292.8 | 18 | 119,115 | 260.3 | 25 |
| Delaware | 554,432 | 238.6 | 23 | 554,393 | 257.2 | 26 |
| Perry | 44,188 | 215.0 | 27 | 44,724 | 250.4 | 27 |
| Warren | 42,820 | 198.5 | 33 | 41,973 | 240.6 | 28 |
| Union | 42,552 | 206.8 | 29 | 43,171 | 238.6 | 29 |
| Blair | 127,175 | 221.0 | 26 | 126,572 | 231.5 | 30 |
| Northampton | 278,169 | 197.4 | 34 | 287,334 | 223.1 | 31 |
| Greene | 40,398 | 205.5 | 30 | 40,408 | 220.3 | 32 |
| Sullivan | 6,427 | 202.3 | 32 | 6,361 | 220.1 | 33 |
| Lancaster | 482,775 | 196.0 | 35 | 489,936 | 214.3 | 34 |
| Tioga | 41,557 | 214.2 | 28 | 41,382 | 207.8 | 35 |
| Luzerne | 313,528 | 176.7 | 42 | 312,795 | 207.2 | 36 |
| Adams | 96,456 | 183.5 | 40 | 99,746 | 204.5 | 37 |
| McKean | 45,236 | 187.9 | 38 | 44,239 | 203.4 | 38 |
| Ciinton | 37,435 | 160.3 | 48 | 37,233 | 201.4 | 39 |
| Chester | 457,393 | 178.4 | 41 | 473,723 | 195.9 | 40 |
| Juniata | 23,065 | 151.7 | 52 | 23,412 | 183.7 | 41 |
| Clarion | 41,208 | 148.0 | 54 | 40,388 | 183.2 | 42 |
| Mifflin | 46,335 | 187.8 | 39 | 46,085 | 182.3 | 43 |
| Cameron | 5,777 | 155.8 | 50 | 5,593 | 178.8 | 44 |
| Montour | 18,083 | 165.9 | 45 | 17,983 | 177.9 | 45 |
| Somerset | 79,365 | 168.8 | 44 | 78,796 | 173.9 | 46 |
| Beaver | 178,697 | 160.6 | 47 | 176,825 | 171.4 | 47 |
| Columbia | 64,605 | 170.3 | 43 | 64,792 | 169.8 | 48 |
| Susquehanna | 41,812 | 188.9 | 37 | 41,943 | 169.3 | 49 |
| Potter | 18,141 | 192.9 | 36 | 17,728 | 169.2 | 50 |
| Butler | 180,040 | 149.4 | 53 | 181,526 | 167.5 | 51 |
| Centre | 141,636 | 139.8 | 56 | 140,313 | 165.3 | 52 |
| Montgomery | 770,747 | 153.9 | 51 | 774,666 | 162.0 | 53 |
| Cambria | 149,453 | 137.2 | 57 | 147,804 | 157.6 | 54 |
| Bedford | 49,941 | 104.1 | 66 | 49,862 | 150.4 | 55 |
| Indiana | 89,054 | 156.1 | 49 | 88,481 | 145.8 | 56 |
| Monroe | 154,495 | 141.1 | 55 | 162,415 | 145.3 | 57 |
| Huntingdon | 45,865 | 163.5 | 46 | 45,772 | 137.6 | 58 |
| Westmoreland | 368,224 | 115.1 | 63 | 367,133 | 132.9 | 59 |
| Washington | 204,286 | 119.0 | 62 | 206,418 | 129.8 | 60 |
| Cumberland | 219,892 | 124.6 | 59 | 223,017 | 129.1 | 61 |
| Bucks | 613,110 | 106.7 | 65 | 619,772 | 128.1 | 62 |
| Schuylkill | 147,944 | 110.2 | 64 | 146,996 | 124.5 | 63 |
| Armstrong | 71,659 | 100.5 | 67 | 70,527 | 123.4 | 64 |
| Carbon | 60,131 | 134.7 | 58 | 61,876 | 122.8 | 65 |
| Pike | 52,163 | 122.7 | 60 | 56,180 | 122.8 | 66 |
| Elk | 34,310 | 119.5 | 61 | 33,473 | 116.5 | 67 |
| Total | 12,365,455 | 329.8 | 0 | 12,405,348 | 342.5 | 0 |

* Data based on estimated population provided by the Pennsylvania State Data Center.

Table 15: Inmate Population Versus State Institutional Capacity From 1996 through 2005

| Year | Number of Inmates | Multiple Occupancy Capacity | Percent of Capacity |
|------|-------------------|-----------------------------|---------------------|
| 1996 | 34,537 | 27,132 | 131.3% |
| 1997 | 34,964 | 28,702 | 121.8% |
| 1998 | 36,377 | 30,992 | 117.4% |
| 1999 | 36,457 | 32,384 | 112.4% |
| 2000 | 36,802 | 33,180 | 110.9% |
| 2001 | 38,067 | 33,757 | 112.2% |
| 2002 | 40,172 | 34,583 | 115.7% |
| 2003 | 40,850 | 34,240 | 118.9% |
| 2004 | 41,000 | 37,570 | 108.8% |
| 2005 | 42,486 | 38,357 | 110.5% |

Notes: The 2001-2004 percent of capacity does not include the Forensic Psychiatric Unit population at SCI Waymart. As of May 31, 2004, the Department began reporting "Operational Bed Capacity", which represents the optimal number of inmates that each facility can house based on a number of factors. In addition to cell size and security level, "Operational Bed Capacity" takes into consideration availability of inmate employment or programming, support services, and facility infrastructure. Prior capacity ratings were based solely on the physical characteristics of the cells (i.e., cell size and security level). This is not a change in how the Department operates. It is rather a change in how the Department assesses capacity with respect to quality of life and safety for both staff and inmates.

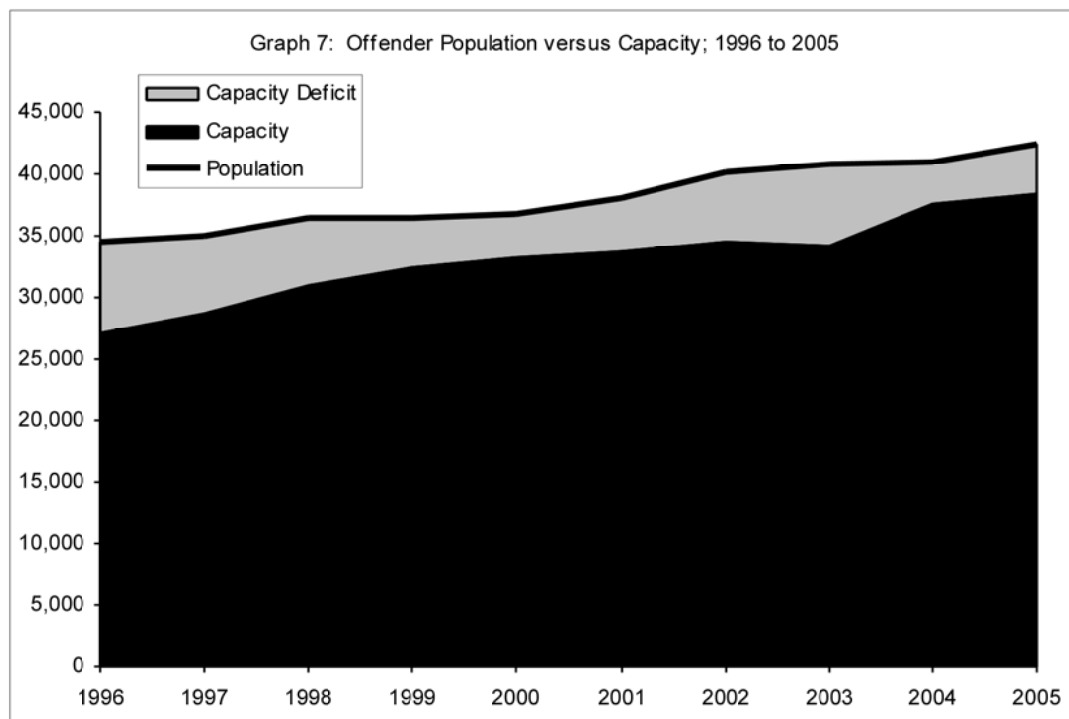
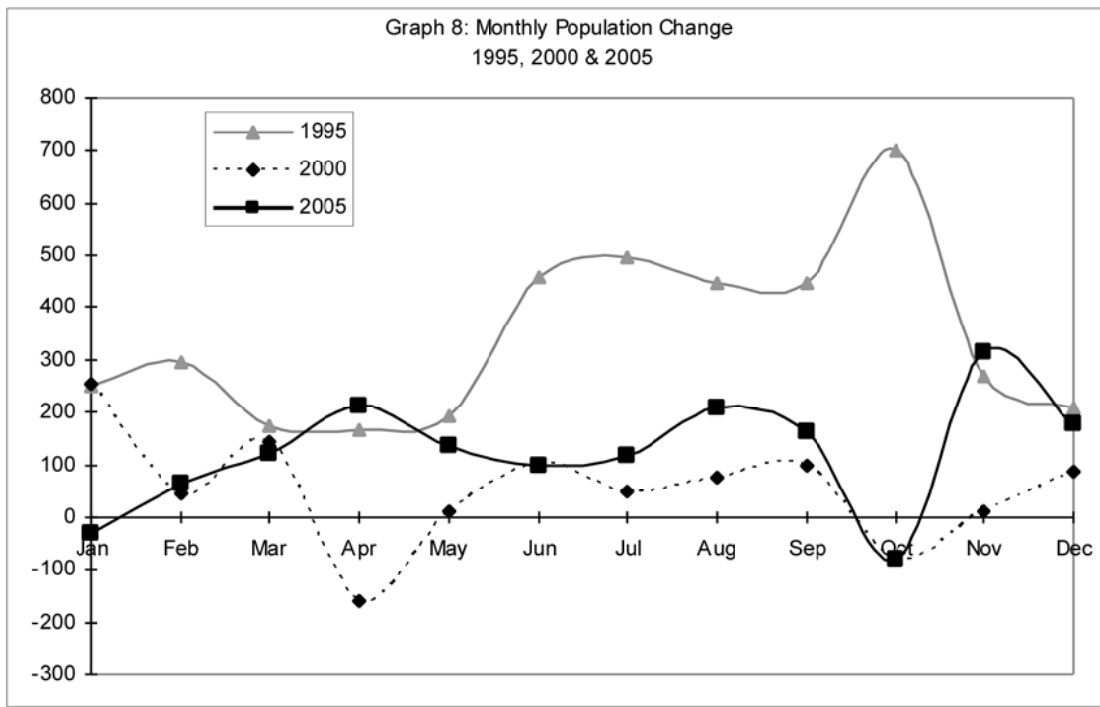


Table 16: Month-End Population 1995 through December 2005

| Month | 1995 | 1996 | 1997 | 1998 | 1999 | 2000 | 2001 | 2002 | 2003 | 2004 | 2005 |
|-----------|--------|--------|--------|--------|--------|--------|--------|--------|--------|--------|--------|
| January | 28,554 | 32,551 | 34,739 | 35,075 | 36,485 | 36,426 | 36,799 | 38,195 | 40,394 | 40,836 | 40,948 |
| February | 28,850 | 32,939 | 34,807 | 35,275 | 36,598 | 36,471 | 36,760 | 38,397 | 40,556 | 40,809 | 41,012 |
| March | 29,024 | 33,189 | 34,744 | 35,316 | 36,627 | 36,613 | 36,961 | 38,660 | 40,606 | 40,873 | 41,134 |
| April | 29,192 | 33,517 | 34,711 | 35,537 | 36,603 | 36,452 | 36,829 | 38,734 | 40,662 | 40,901 | 41,347 |
| May | 29,386 | 33,836 | 34,770 | 35,561 | 36,527 | 36,462 | 37,020 | 39,074 | 40,744 | 40,822 | 41,484 |
| June | 29,844 | 33,939 | 34,703 | 35,644 | 36,511 | 36,563 | 37,081 | 39,136 | 40,437 | 40,697 | 41,582 |
| July | 30,341 | 34,121 | 34,688 | 35,821 | 36,520 | 36,611 | 37,166 | 39,283 | 40,639 | 40,627 | 41,700 |
| August | 30,789 | 34,300 | 34,771 | 35,863 | 36,523 | 36,686 | 37,299 | 39,268 | 40,783 | 40,524 | 41,910 |
| September | 31,235 | 34,408 | 34,696 | 36,065 | 36,467 | 36,783 | 37,407 | 39,295 | 40,818 | 40,633 | 42,073 |
| October | 31,935 | 34,649 | 34,715 | 36,198 | 36,531 | 36,703 | 37,500 | 39,571 | 40,859 | 40,726 | 41,992 |
| November | 32,203 | 34,560 | 34,857 | 36,260 | 36,382 | 36,714 | 37,754 | 39,776 | 40,777 | 40,674 | 42,307 |
| December | 32,410 | 34,537 | 34,964 | 36,377 | 36,457 | 36,802 | 38,067 | 40,172 | 40,850 | 41,000 | 42,486 |



Population

Table 17: Inmate Population by Facility, Race, Gender, and Age on December 31, 2004

| Facility | Race | | | | Gender | | Age | | | Total |
|-------------------|---------------|---------------|--------------|-------------|---------------|--------------|--------------|---------------|---------------|---------------|
| | White | Black | Hispanic | Other | Male | Female | Under 25 | 25 - 39 | 40 and Over | |
| Albion | 945 | 1,014 | 225 | 19 | 2,203 | 0 | 345 | 1,168 | 690 | 2,203 |
| Cambridge Springs | 423 | 281 | 84 | 14 | 0 | 802 | 83 | 407 | 312 | 802 |
| Camp Hill | 1,441 | 1,570 | 490 | 17 | 3,518 | 0 | 899 | 1,638 | 981 | 3,518 |
| Chester | 239 | 756 | 163 | 9 | 1,167 | 0 | 186 | 680 | 301 | 1,167 |
| Coal Township | 670 | 933 | 226 | 8 | 1,837 | 0 | 421 | 933 | 483 | 1,837 |
| Cresson | 706 | 525 | 130 | 8 | 1,369 | 0 | 180 | 663 | 528 | 1,369 |
| Dallas | 669 | 1,146 | 227 | 6 | 2,048 | 0 | 148 | 885 | 1,015 | 2,048 |
| Fayette | 550 | 1,166 | 201 | 8 | 1,925 | 0 | 232 | 981 | 712 | 1,925 |
| Frackville | 115 | 201 | 40 | 3 | 359 | 0 | 74 | 160 | 125 | 359 |
| Graterford | 383 | 612 | 93 | 13 | 1,101 | 0 | 178 | 575 | 343 | 1,101 |
| Greene | 655 | 2,157 | 347 | 26 | 3,185 | 0 | 310 | 1,448 | 1,427 | 3,185 |
| Greensburg | 578 | 1,064 | 184 | 12 | 1,838 | 0 | 254 | 1,008 | 578 | 1,838 |
| Houtzdale | 330 | 469 | 98 | 7 | 904 | 0 | 106 | 514 | 284 | 904 |
| Huntingdon | 784 | 1,175 | 253 | 8 | 2,220 | 0 | 408 | 957 | 855 | 2,220 |
| Laurel Highlands | 542 | 1,296 | 219 | 13 | 2,070 | 0 | 220 | 1,079 | 771 | 2,070 |
| Mahanoy | 491 | 317 | 75 | 8 | 891 | 0 | 33 | 271 | 587 | 891 |
| Mercer | 695 | 1,250 | 253 | 22 | 2,220 | 0 | 345 | 1,231 | 644 | 2,220 |
| Muncy | 562 | 388 | 94 | 8 | 1,052 | 0 | 71 | 388 | 593 | 1,052 |
| Pine Grove | 503 | 392 | 75 | 16 | 0 | 986 | 131 | 485 | 370 | 986 |
| Pittsburgh | 151 | 373 | 91 | 3 | 618 | 0 | 387 | 155 | 76 | 618 |
| Quehanna Bootcamp | 45 | 68 | 12 | 0 | 125 | 0 | 8 | 54 | 63 | 125 |
| Retreat | 69 | 115 | 51 | 2 | 234 | 3 | 118 | 119 | 0 | 237 |
| Rockview | 343 | 425 | 115 | 7 | 890 | 0 | 135 | 469 | 286 | 890 |
| Smithfield | 724 | 986 | 243 | 14 | 1,967 | 0 | 228 | 989 | 750 | 1,967 |
| Somerset | 391 | 662 | 160 | 8 | 1,221 | 0 | 172 | 719 | 330 | 1,221 |
| Waymart | 814 | 1,173 | 261 | 19 | 2,267 | 0 | 447 | 1,202 | 618 | 2,267 |
| Waynesburg | 742 | 347 | 136 | 11 | 1,236 | 0 | 54 | 404 | 778 | 1,236 |
| C C Cs | 140 | 177 | 51 | 1 | 358 | 11 | 45 | 219 | 105 | 369 |
| Group Homes | 75 | 204 | 81 | 2 | 338 | 24 | 39 | 191 | 132 | 362 |
| Federal | 5 | 8 | 0 | 0 | 13 | 0 | 0 | 4 | 9 | 13 |
| Total | 14,780 | 21,250 | 4,678 | 292 | 39,174 | 1,826 | 6,257 | 19,996 | 14,747 | 41,000 |
| % of Total | 36.0% | 51.8% | 11.4% | 0.7% | 95.5% | 4.5% | 15.3% | 48.8% | 36.0% | 100.0% |

* Community Corrections Centers

Table 18: Inmate Population by Facility, Race, Gender, and Age on December 31, 2005

| Facility | Race | | | | Gender | | Age | | | Total |
|-------------------|---------------|---------------|--------------|-------------|---------------|--------------|--------------|---------------|---------------|---------------|
| | White | Black | Hispanic | Other | Male | Female | Under 25 | 25 - 39 | 40 and Over | |
| Albion | 991 | 1,070 | 188 | 21 | 2,270 | 0 | 290 | 1,231 | 749 | 2,270 |
| Cambridge Springs | 512 | 305 | 76 | 18 | 0 | 911 | 90 | 429 | 392 | 911 |
| Camp Hill | 1,390 | 1,484 | 478 | 11 | 3,363 | 0 | 823 | 1,573 | 967 | 3,363 |
| Chester | 263 | 739 | 164 | 5 | 1,171 | 0 | 158 | 679 | 334 | 1,171 |
| Coal Township | 700 | 921 | 223 | 9 | 1,853 | 0 | 401 | 923 | 529 | 1,853 |
| Cresson | 706 | 517 | 140 | 8 | 1,371 | 0 | 160 | 646 | 565 | 1,371 |
| Dallas | 680 | 1,086 | 212 | 8 | 1,986 | 0 | 150 | 847 | 989 | 1,986 |
| Fayette | 564 | 1,147 | 186 | 14 | 1,911 | 0 | 224 | 969 | 718 | 1,911 |
| Forest | 642 | 978 | 216 | 9 | 1,845 | 0 | 380 | 951 | 514 | 1,845 |
| Frackville | 407 | 581 | 107 | 12 | 1,107 | 0 | 166 | 578 | 363 | 1,107 |
| Graterford | 693 | 1,997 | 326 | 24 | 3,045 | 0 | 226 | 1,338 | 1,431 | 3,045 |
| Greene | 575 | 1,122 | 171 | 12 | 1,880 | 0 | 190 | 1,046 | 644 | 1,880 |
| Greensburg | 345 | 460 | 90 | 5 | 900 | 0 | 96 | 498 | 306 | 900 |
| Houtzdale | 811 | 1,141 | 260 | 14 | 2,226 | 0 | 477 | 929 | 820 | 2,226 |
| Huntingdon | 576 | 1,271 | 223 | 16 | 2,086 | 0 | 134 | 1,115 | 837 | 2,086 |
| Laurel Highlands | 523 | 302 | 80 | 6 | 911 | 0 | 29 | 260 | 622 | 911 |
| Mahanoy | 752 | 1,244 | 234 | 20 | 2,250 | 0 | 305 | 1,206 | 739 | 2,250 |
| Mercer | 569 | 387 | 74 | 6 | 1,036 | 0 | 54 | 394 | 588 | 1,036 |
| Muncy | 567 | 361 | 90 | 18 | 0 | 1,036 | 172 | 434 | 380 | 1,036 |
| Pine Grove | 153 | 406 | 91 | 2 | 657 | 0 | 430 | 148 | 79 | 657 |
| Quehanna Bootcamp | 95 | 123 | 38 | 2 | 251 | 7 | 103 | 141 | 14 | 258 |
| Retreat | 354 | 417 | 95 | 7 | 873 | 0 | 111 | 461 | 301 | 873 |
| Rockview | 752 | 992 | 221 | 14 | 1,979 | 0 | 191 | 1,007 | 781 | 1,979 |
| Smithfield | 386 | 677 | 147 | 7 | 1,217 | 0 | 137 | 705 | 375 | 1,217 |
| Somerset | 841 | 1,111 | 252 | 20 | 2,224 | 0 | 414 | 1,141 | 669 | 2,224 |
| Waymart | 751 | 347 | 134 | 8 | 1,240 | 0 | 41 | 408 | 791 | 1,240 |
| C C Cs | 136 | 165 | 61 | 4 | 339 | 27 | 37 | 201 | 128 | 366 |
| Group Homes | 124 | 284 | 92 | 3 | 452 | 51 | 61 | 285 | 157 | 503 |
| Federal | 4 | 7 | 0 | 0 | 11 | 0 | 0 | 4 | 7 | 11 |
| Total | 15,872 | 21,642 | 4,669 | 303 | 40,454 | 2,032 | 6,050 | 20,647 | 15,789 | 42,486 |
| % of Total | 37.3% | 51.0% | 11.0% | 0.7% | 95.2% | 4.8% | 14.2% | 48.6% | 37.2% | 100.0% |

* Community Corrections Centers

Table 19: Uniform Crime Report Offense Groupings by Inmate Race and Gender as of December 31, 2005

| | Race | | | | | | Gender | | Total | |
|---------------------------------|---------------|---------------|--------------|------------|-----------|-----------|---------------|--------------|---------------|---------------|
| | White | Black | Hispanic | Asian | Indian | Other | Male | Female | Number | Percent |
| Part I Offenses | | | | | | | | | | |
| Murder | | | | | | | | | | |
| 1st Degree | 871 | 1751 | 233 | 19 | 10 | 6 | 2,773 | 117 | 2,890 | 6.8% |
| 2nd Degree | 233 | 704 | 77 | 8 | 2 | | 989 | 35 | 1,024 | 2.4% |
| 3rd Degree | 557 | 1380 | 260 | 22 | 4 | 4 | 2,084 | 143 | 2,227 | 5.2% |
| Unspecified | 154 | 191 | 51 | 2 | 2 | | 391 | 9 | 400 | 0.9% |
| Voluntary Manslaughter | 49 | 119 | 26 | 1 | 1 | | 178 | 18 | 196 | 0.5% |
| Involuntary Manslaughter | 28 | 24 | 5 | | | | 52 | 5 | 57 | 0.1% |
| Homicide by Motor Vehicle | 156 | 32 | 11 | 3 | | 1 | 184 | 19 | 203 | 0.5% |
| Forcible Rape | 1965 | 1260 | 225 | 9 | 9 | 3 | 3,432 | 39 | 3,471 | 8.2% |
| Robbery | 1123 | 2869 | 366 | 37 | 3 | 5 | 4,292 | 111 | 4,403 | 10.4% |
| Aggravated Assault | 956 | 1736 | 337 | 19 | 6 | 1 | 2,910 | 145 | 3,055 | 7.2% |
| Burglary | 987 | 634 | 104 | 8 | 5 | 3 | 1,686 | 55 | 1,741 | 4.1% |
| Theft (Including Motor Vehicle) | 501 | 268 | 44 | 1 | 2 | 1 | 697 | 120 | 817 | 1.9% |
| Arson | 142 | 57 | 11 | 2 | | 1 | 199 | 14 | 213 | 0.5% |
| Total Part I Offenses | 7,722 | 11,025 | 1,750 | 131 | 44 | 25 | 19,867 | 830 | 20,697 | 48.7% |
| | | | | | | | | | | |
| | | | | | | | | | | |
| Part II Offenses | | | | | | | | | | |
| Other Assaults | 194 | 118 | 19 | 1 | 2 | 1 | 326 | 9 | 335 | 0.8% |
| Fraud | 138 | 46 | 11 | 1 | 1 | 1 | 159 | 39 | 198 | 0.5% |
| Receiving Stolen Property | 158 | 132 | 22 | 1 | | | 294 | 19 | 313 | 0.7% |
| Forgery | 145 | 69 | 11 | 2 | | 1 | 168 | 60 | 228 | 0.5% |
| Statutory Rape | 246 | 93 | 34 | 3 | 1 | | 364 | 13 | 377 | 0.9% |
| Other Sex Offenses | 250 | 65 | 25 | | | | 336 | 4 | 340 | 0.8% |
| Narcotic Drug Laws | 1,218 | 3,748 | 1,428 | 17 | 4 | 5 | 6,047 | 373 | 6,420 | 15.1% |
| Weapons | 75 | 247 | 33 | | | | 347 | 8 | 355 | 0.8% |
| DUI | 204 | 21 | 7 | | 1 | | 222 | 11 | 233 | 0.5% |
| Prison Breach | 116 | 97 | 27 | | 1 | | 210 | 31 | 241 | 0.6% |
| Kidnapping | 71 | 89 | 21 | | 1 | | 173 | 9 | 182 | 0.4% |
| Other Part II Offenses | 2,811 | 1,597 | 452 | 11 | 6 | 8 | 4,548 | 337 | 4,885 | 11.5% |
| Total Part II Offenses | 5,626 | 6,322 | 2,090 | 36 | 17 | 16 | 13,194 | 913 | 14,107 | 33.2% |
| Parole Violators | 2,477 | 4,267 | 818 | 16 | 10 | 6 | 7,308 | 286 | 7,594 | 17.9% |
| Detentioners/Other | 47 | 28 | 11 | 0 | 2 | 0 | 85 | 3 | 88 | 0.2% |
| Total DOC | 15,872 | 21,642 | 4,669 | 183 | 73 | 47 | 40,454 | 2,032 | 42,486 | 100.0% |

Note: Totals based on percentages may be off due to rounding.

Table 20: Status of Inmates on December 31, Calendar Years 1995 through 2005

| Status | 1995 | 1996 | 1997 | 1998 | 1999 | 2000 | 2001 | 2002 | 2003 | 2004 | 2005 |
|----------------------|---------------|---------------|---------------|---------------|---------------|---------------|---------------|---------------|---------------|---------------|---------------|
| Sentenced | 26,643 | 28,219 | 29,038 | 30,191 | 30,563 | 30,683 | 31,232 | 32,865 | 33,613 | 33,906 | 34,804 |
| Parole Violators | 5,762 | 6,316 | 5,925 | 6,186 | 5,893 | 6,118 | 6,834 | 7,287 | 7,235 | 7,036 | 7,594 |
| Detentioners | 5 | 2 | 1 | 0 | 0 | 0 | 0 | 3 | 0 | 48 | 88 |
| Unknown | 0 | 0 | 0 | 0 | 1 | 1 | 1 | 17 | 2 | 10 | 0 |
| Total | 32,410 | 34,537 | 34,964 | 36,377 | 36,457 | 36,802 | 38,067 | 40,172 | 40,850 | 41,000 | 42,486 |
| Percent Distribution | 1995 | 1996 | 1997 | 1998 | 1999 | 2000 | 2001 | 2002 | 2003 | 2004 | 2005 |
| Sentenced | 82.2% | 81.7% | 83.1% | 83.0% | 83.8% | 83.4% | 82.0% | 81.8% | 82.3% | 82.7% | 81.9% |
| Parole Violators | 17.8% | 18.3% | 16.9% | 17.0% | 16.2% | 16.6% | 18.0% | 18.1% | 17.7% | 17.2% | 17.9% |
| Detentioners | 0.0% | 0.0% | 0.0% | 0.0% | 0.0% | 0.0% | 0.0% | 0.0% | 0.0% | 0.1% | 0.2% |
| Unknown | 0.0% | 0.0% | 0.0% | 0.0% | 0.0% | 0.0% | 0.0% | 0.0% | 0.0% | 0.0% | 0.0% |
| Total | 100.0% | 100.0% | 100.0% | 100.0% | 100.0% | 100.0% | 100.0% | 100.0% | 100.0% | 100.0% | 100.0% |

Note: Totals may not equal 100% due to rounding.

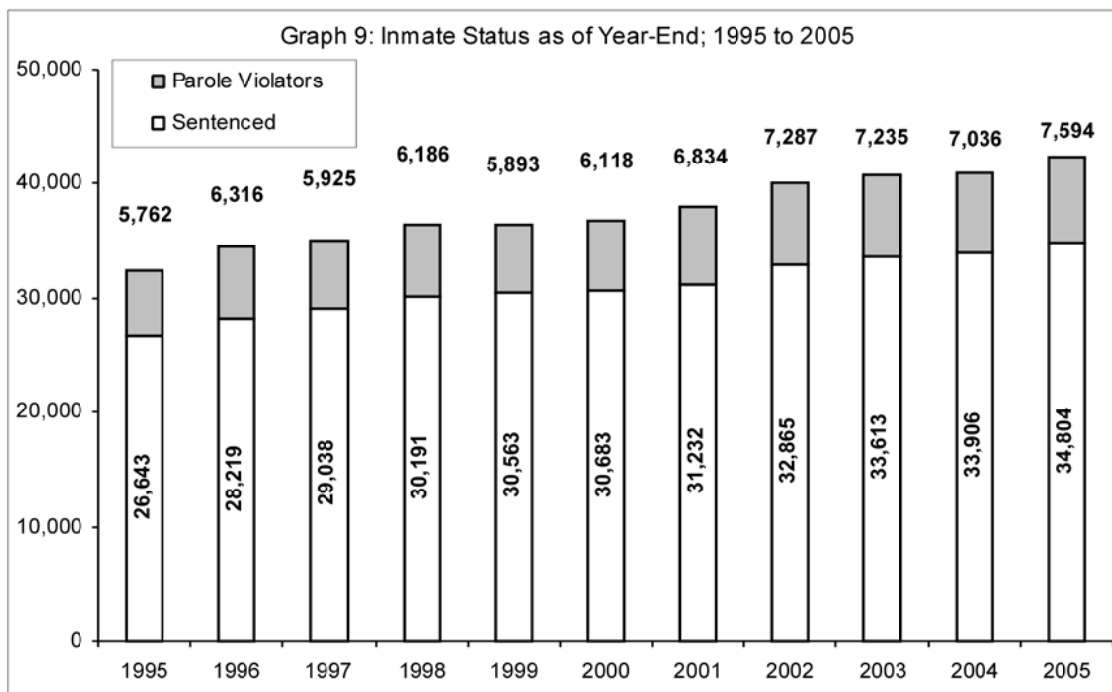


Table 22: Demographic Profile of Inmates on December 31; Calendar Years 2004 and 2005

| Item | December 31, 2004 | | December 31, 2005 | |
|-----------------------|-------------------|---------------|-------------------|---------------|
| | Number | Percent | Number | Percent |
| Age | | | | |
| Under 18 | 41 | 0.1% | 29 | 0.1% |
| 18-20 | 1,060 | 2.6% | 1,033 | 2.4% |
| 21-24 | 5,156 | 12.6% | 4,988 | 11.7% |
| 25-29 | 7,806 | 19.0% | 8,117 | 19.1% |
| 30-34 | 6,362 | 15.5% | 6,535 | 15.4% |
| 35-39 | 5,828 | 14.2% | 5,995 | 14.1% |
| 40-44 | 5,575 | 13.6% | 5,784 | 13.6% |
| 45-49 | 4,091 | 10.0% | 4,493 | 10.6% |
| 50-54 | 2,511 | 6.1% | 2,658 | 6.3% |
| 55-59 | 1,387 | 3.4% | 1,559 | 3.7% |
| 60-64 | 669 | 1.6% | 748 | 1.8% |
| 65 and Over | 514 | 1.3% | 547 | 1.3% |
| Average | 36 | - | 36 | - |
| Race | | | | |
| Black | 21,250 | 51.8% | 21,642 | 50.9% |
| White | 14,780 | 36.0% | 15,872 | 37.4% |
| Hispanic | 4,678 | 11.4% | 4,669 | 11.0% |
| Other | 292 | 0.7% | 303 | 0.7% |
| Gender | | | | |
| Male | 39,174 | 95.5% | 40,454 | 95.2% |
| Female | 1,826 | 4.5% | 2,032 | 4.8% |
| Marital Status | | | | |
| Single | 29,218 | 71.3% | 30,530 | 71.9% |
| Married | 6,421 | 15.7% | 6,565 | 15.5% |
| Divorced | 3,215 | 7.8% | 3,221 | 7.6% |
| Separated | 1,483 | 3.6% | 1,478 | 3.5% |
| Widowed | 472 | 1.2% | 475 | 1.1% |
| Unknown | 191 | 0.5% | 217 | 0.5% |
| Birthplace | | | | |
| PA | 29,837 | 72.8% | 30,922 | 72.8% |
| USA Not PA | 9,984 | 24.4% | 10,540 | 24.8% |
| Foreign Born | 1,179 | 2.9% | 1,024 | 2.4% |
| Religion | | | | |
| Protestant | 13,320 | 32.5% | 13,961 | 32.9% |
| Catholic | 7,317 | 17.8% | 7,498 | 17.6% |
| Moslem | 7,545 | 18.4% | 7,767 | 18.3% |
| Jewish | 197 | 0.5% | 192 | 0.5% |
| Other | 5,598 | 13.7% | 5,714 | 13.4% |
| No preference | 7,023 | 17.1% | 7,354 | 17.3% |
| Total | 41,000 | 100.0% | 42,486 | 100.0% |

Note: Totals may not equal 100% due to rounding.

Table 23: Long-Term Inmates on December 31, Calendar Years 2004 and 2005

| Minimum Sentence | December 31st | | Change from 2004 to 2005 | |
|------------------------------------|---------------|--------------|--------------------------|-------------|
| | 2004 | 2005 | Number | Percent |
| Over 10 to 20 Years | 3,551 | 3,698 | 147 | 4.1% |
| Over 20 Years | 1,260 | 1,349 | 89 | 7.1% |
| Lifers | 4,091 | 4,216 | 125 | 3.1% |
| Capital Cases | 225 | 224 | -1 | -0.4% |
| Total | 9,127 | 9,487 | 360 | 3.9% |
| Percent of Total Population | 22.3% | 22.3% | - | - |

Table 24: Number of Inmates by Facility Serving a Life Sentence on December 31; Calendar Years 2004 and 2005

| Institution | 2004 | | 2005 | | Percent Change 2003 - 2004 |
|-------------------|--------------|---------------|--------------|---------------|-------------------------------|
| | Number | Percent | Number | Percent | |
| Albion | 177 | 4.3% | 193 | 4.6% | 9.0% |
| Cambridge Springs | 19 | 0.5% | 20 | 0.5% | 5.3% |
| Camp Hill | 82 | 2.0% | 79 | 1.9% | -3.7% |
| Chester | 33 | 0.8% | 32 | 0.8% | -3.0% |
| Coal Township | 147 | 3.6% | 149 | 3.5% | 1.4% |
| Cresson | 51 | 1.2% | 52 | 1.2% | 2.0% |
| Dallas | 383 | 9.4% | 401 | 9.5% | 4.7% |
| Fayette | 267 | 6.5% | 286 | 6.8% | 7.1% |
| Forest | 34 | 0.8% | 84 | 2.0% | 147.1% |
| Frackville | 132 | 3.2% | 133 | 3.2% | 0.8% |
| Graterford | 770 | 18.8% | 765 | 18.1% | -0.6% |
| Greene | 339 | 8.3% | 337 | 8.0% | -0.6% |
| Greensburg | 33 | 0.8% | 41 | 1.0% | 24.2% |
| Houtzdale | 124 | 3.0% | 134 | 3.2% | 8.1% |
| Huntingdon | 433 | 10.6% | 418 | 9.9% | -3.5% |
| Laurel Highlands | 39 | 1.0% | 37 | 0.9% | -5.1% |
| Mahanoy | 237 | 5.8% | 254 | 6.0% | 7.2% |
| Mercer | 2 | 0.0% | 4 | 0.1% | 100.0% |
| Muncy | 131 | 3.2% | 136 | 3.2% | 3.8% |
| Pine Grove | 17 | 0.4% | 19 | 0.5% | 11.8% |
| Pittsburgh | 19 | 0.5% | 0 | 0.0% | -100.0% |
| Retreat | 55 | 1.3% | 58 | 1.4% | 5.5% |
| Rockview | 172 | 4.2% | 180 | 4.3% | 4.7% |
| Smithfield | 171 | 4.2% | 179 | 4.2% | 4.7% |
| Somerset | 216 | 5.3% | 216 | 5.1% | 0.0% |
| Waymart | 4 | 0.1% | 5 | 0.1% | 25.0% |
| Lewisburg (Fed) | 4 | 0.1% | 4 | 0.1% | 0.0% |
| Total | 4,091 | 100.0% | 4,216 | 100.0% | 3.1% |

Note: Totals may not equal 100% due to rounding.

Table 25: Inmates Serving a Life Sentence by Committing County; Calendar Years 2004 and 2005

| County | December 31, 2004 | | December 31, 2005 | |
|----------------|-------------------|---------------|-------------------|---------------|
| | Number | % of Total | Number | % of Total |
| Philadelphia | 2,169 | 53.0% | 2,226 | 52.8% |
| Allegheny | 408 | 10.0% | 424 | 10.1% |
| Delaware | 145 | 3.5% | 151 | 3.6% |
| Dauphin | 119 | 2.9% | 124 | 2.9% |
| Bucks | 87 | 2.1% | 91 | 2.2% |
| Montgomery | 80 | 2.0% | 87 | 2.1% |
| Lancaster | 87 | 2.1% | 85 | 2.0% |
| Berks | 79 | 1.9% | 84 | 2.0% |
| York | 76 | 1.9% | 78 | 1.9% |
| Erie | 66 | 1.6% | 66 | 1.6% |
| Chester | 62 | 1.5% | 64 | 1.5% |
| Lehigh | 61 | 1.5% | 61 | 1.4% |
| Other Counties | 652 | 15.9% | 675 | 16.0% |
| Total | 4,091 | 100.0% | 4,216 | 100.0% |

Note: Totals may not equal 100% due to rounding.

Table 26: Age of Inmates Serving a Life Sentence on December 31; Calendar Years 2004 and 2005

| Age | December 31, 2004 | | | December 31, 2005 | | |
|--------------------|-------------------|---------------|--------------|-------------------|---------------|--------------|
| | Number | % of Total | Cumulative % | Number | % of Total | Cumulative % |
| Under 20 | 16 | 0.4% | 0.4% | 15 | 0.4% | 0.4% |
| 20 to 24 | 187 | 4.6% | 5.0% | 173 | 4.1% | 4.5% |
| 25 to 29 | 504 | 12.3% | 17.3% | 502 | 11.9% | 16.4% |
| 30 to 34 | 549 | 13.4% | 30.7% | 570 | 13.5% | 29.9% |
| 35 to 39 | 534 | 13.1% | 43.8% | 546 | 13.0% | 42.8% |
| 40 to 44 | 624 | 15.3% | 59.0% | 595 | 14.1% | 56.9% |
| 45 to 49 | 590 | 14.4% | 73.4% | 630 | 14.9% | 71.9% |
| 50 to 54 | 473 | 11.6% | 85.0% | 497 | 11.8% | 83.7% |
| 55 to 59 | 316 | 7.7% | 92.7% | 353 | 8.4% | 92.1% |
| 60 to 64 | 176 | 4.3% | 97.0% | 188 | 4.5% | 96.5% |
| 65 and Over | 122 | 3.0% | 100.0% | 147 | 3.5% | 100.0% |
| Total | 4,091 | 100.0% | - | 4,216 | 100.0% | - |
| Average Age | 41.9 | - | - | 42.4 | - | - |

**Table 27 : Time Served by Inmates Serving Life as of December 31;
Calendar Years 2004 and 2005**

| Time Served | 2004 | | 2005 | |
|-----------------------|--------------|---------------|--------------|---------------|
| | Number | % of Total | Number | % of Total |
| Under 5 Years | 516 | 12.6% | 524 | 12.4% |
| 5 to 9.9 Years | 808 | 19.8% | 788 | 18.7% |
| 10 to 14.9 Years | 876 | 21.4% | 862 | 20.4% |
| 15 to 19.9 Years | 628 | 15.4% | 686 | 16.3% |
| 20 to 24.9 Years | 589 | 14.4% | 583 | 13.8% |
| 25 to 29.9 Years | 371 | 9.1% | 408 | 9.7% |
| 30 to 34.9 Years | 221 | 5.4% | 244 | 5.8% |
| 35 to 39.9 Years | 63 | 1.5% | 93 | 2.2% |
| 40 Years and over | 19 | 0.5% | 28 | 0.7% |
| Total | 4,091 | 100.0% | 4,216 | 100.0% |
| Average(Years) | 15.4 | - | 15.9 | |

Note: Totals may not equal 100% due to rounding.

**Table 28: Profile of Inmates Under Death Sentence on December 31;
Calendar Years 2004 and 2005**

| Category | December 31, 2004 | | December 31, 2005 | |
|----------------|-------------------|---------------|-------------------|---------------|
| | Number | % of Total | Number | % of Total |
| County | | | | |
| Philadelphia | 122 | 54.2% | 119 | 53.1% |
| Allegheny | 10 | 4.4% | 10 | 4.5% |
| Berks | 9 | 4.0% | 10 | 4.5% |
| York | 9 | 4.0% | 9 | 4.0% |
| Lehigh | 7 | 3.1% | 7 | 3.1% |
| Cumberland | 5 | 2.2% | 5 | 2.2% |
| Lancaster | 5 | 2.2% | 5 | 2.2% |
| Washington | 5 | 2.2% | 5 | 2.2% |
| Bucks | 4 | 1.8% | 4 | 1.8% |
| Dauphin | 4 | 1.8% | 4 | 1.8% |
| Montgomery | 4 | 1.8% | 4 | 1.8% |
| Other Counties | 41 | 18.2% | 42 | 18.7% |
| Age | | | | |
| 18 - 24 | 6 | 2.7% | 4 | 1.8% |
| 25 - 29 | 19 | 8.4% | 21 | 9.4% |
| 30 - 34 | 26 | 11.6% | 20 | 8.9% |
| 35 - 39 | 44 | 19.6% | 42 | 18.8% |
| 40 - 44 | 47 | 20.9% | 46 | 20.5% |
| 45 - 49 | 38 | 16.9% | 41 | 18.3% |
| 50 - 54 | 22 | 9.8% | 26 | 11.6% |
| 55 and Over | 23 | 10.2% | 24 | 10.7% |
| Average | 41.6 | - | 41.6 | - |
| Race | | | | |
| White | 68 | 30.2% | 70 | 31.3% |
| Black | 137 | 60.9% | 134 | 59.8% |
| Hispanic | 18 | 8.0% | 18 | 8.0% |
| Other | 2 | 0.9% | 2 | 0.9% |
| Gender | | | | |
| Male | 220 | 97.8% | 219 | 97.8% |
| Female | 5 | 2.2% | 5 | 2.2% |
| Total | 225 | 100.0% | 224 | 100.0% |

Note: Totals may not equal 100% due to rounding.

Commonwealth of Pennsylvania
Department of Corrections



2005
Annual Statistical Report

Section III

Releases



Releases

The type of releases from the Department remained almost unchanged between 2004 and 2005.

The number of unconditional releases (i.e., expiration of maximum sentence, executions, and court orders) represented 21.7% of total releases in 2004 and 20.1% in 2005.

The number of conditional releases (i.e., state paroles, county paroles, and reparoles) represented 72.2% of the total releases in 2004 and 69.5% in 2005.

Overall, the average time served for inmates released in 2005 for Part One and Part Two Offenses was 42.7 months. The average time served for Part One Offenders released was 65.6 months and the average time served for Part Two Offenders released was 29.8 months in 2005.

Table 29: Average Time Served by offense for Inmates Released During 2005

| Part I Offenses | 12/31/05 Number | Average Time Served (Months) | Average Time Served (Years) | % of Total |
|-------------------------------------|--------------------|---------------------------------|--------------------------------|---------------|
| Murder | | | | |
| 1st Degree | 32 | 297.3 | 24.7 | 0.2% |
| 2nd Degree | 12 | 176.5 | 14.7 | 0.1% |
| 3rd Degree | 148 | 143.8 | 12.0 | 1.0% |
| Unspecified | 18 | 113.7 | 9.5 | 0.1% |
| Voluntary Manslaughter | 33 | 84.8 | 7.1 | 0.2% |
| Involuntary Manslaughter | 13 | 53.1 | 4.4 | 0.1% |
| Homicide by Motor Vehicle | 48 | 42.7 | 3.6 | 0.3% |
| Forcible Rape | 232 | 128.1 | 10.7 | 1.5% |
| Robbery | 873 | 67.8 | 5.6 | 5.6% |
| Aggravated Assault | 661 | 60.8 | 5.1 | 4.3% |
| Burglary | 592 | 43.1 | 3.6 | 3.8% |
| Theft (Including Motor Vehicle) | 509 | 25.2 | 2.1 | 3.3% |
| Arson | 50 | 64.0 | 5.3 | 0.3% |
| Total Part I Offenses | 3,221 | 65.6 | 5.5 | 20.8% |
| Part II Offenses | 12/31/05 Number | Average Time Served (Months) | Average Time Served (Years) | % of Total |
| Other Assaults | 195 | 27.8 | 2.3 | 1.3% |
| Fraud | 105 | 23.7 | 2.0 | 0.7% |
| Stolen Property | 247 | 27.5 | 2.3 | 1.6% |
| Forgery | 128 | 25.8 | 2.1 | 0.8% |
| Statutory Rape | 70 | 56.4 | 4.7 | 0.5% |
| Other Sex Offenses | 74 | 44.5 | 3.7 | 0.5% |
| Narcotic Drug Offenses | 2,819 | 30.0 | 2.5 | 18.2% |
| Weapons | 146 | 25.8 | 2.1 | 0.9% |
| DUI | 227 | 21.4 | 1.8 | 1.5% |
| Prison Breach | 174 | 23.7 | 2.0 | 1.1% |
| Kidnapping | 13 | 76.0 | 6.3 | 0.1% |
| Other Part II Offenses | 1,512 | 30.9 | 2.6 | 9.7% |
| Total Part II Offenses | 5,710 | 29.8 | 2.5 | 36.8% |
| Total Part I and II Offenses | 8,931 | 42.7 | 3.6 | 57.6% |
| Parole Violators | 5,288 | | | 34.1% |
| Detentioners/Other | 1,298 | | | 8.4% |
| Total DOC | 15,517 | | | 100.0% |

Notes:

- 1) Releases for first and second degree murder are only those due to death.
- 2) Calculation of average time served does not include non-recommit actions or reparoles.
- 3) Totals may not equal 100% due to rounding.

Table 30: Inmate Releases by Type for Calendar Years 2004 and 2005

| Type of Release | 2005 | | 2004 | |
|-----------------------|---------------|---------------|---------------|---------------|
| | Number | Percent | Number | Percent |
| Unconditional | | | | |
| Maxed Out* | 3,047 | 19.6% | 3,115 | 21.1% |
| By Court Order | 75 | 0.5% | 89 | 0.6% |
| Total | 3,122 | 20.1% | 3,204 | 21.7% |
| Conditional | | | | |
| State Parole | 7,288 | 47.0% | 7,487 | 50.6% |
| County Parole | 14 | 0.1% | 17 | 0.1% |
| Reparoled (State) | 3,488 | 22.5% | 3,171 | 21.4% |
| Total | 10,790 | 69.5% | 10,675 | 72.2% |
| Other Releases | | | | |
| Deaths | 149 | 1.0% | 164 | 1.1% |
| Other** | 1,456 | 9.4% | 742 | 5.0% |
| Total | 1,605 | 10.3% | 906 | 6.1% |
| Total Releases | 15,517 | 100.0% | 14,785 | 100.0% |

* Expiration of maximum sentence.

** Other includes transfers to state hospitals and other jurisdictions, and released detentioners. The increase in 2005 is primarily due to the increased use of the Penn CAPP program for technical parole violators.

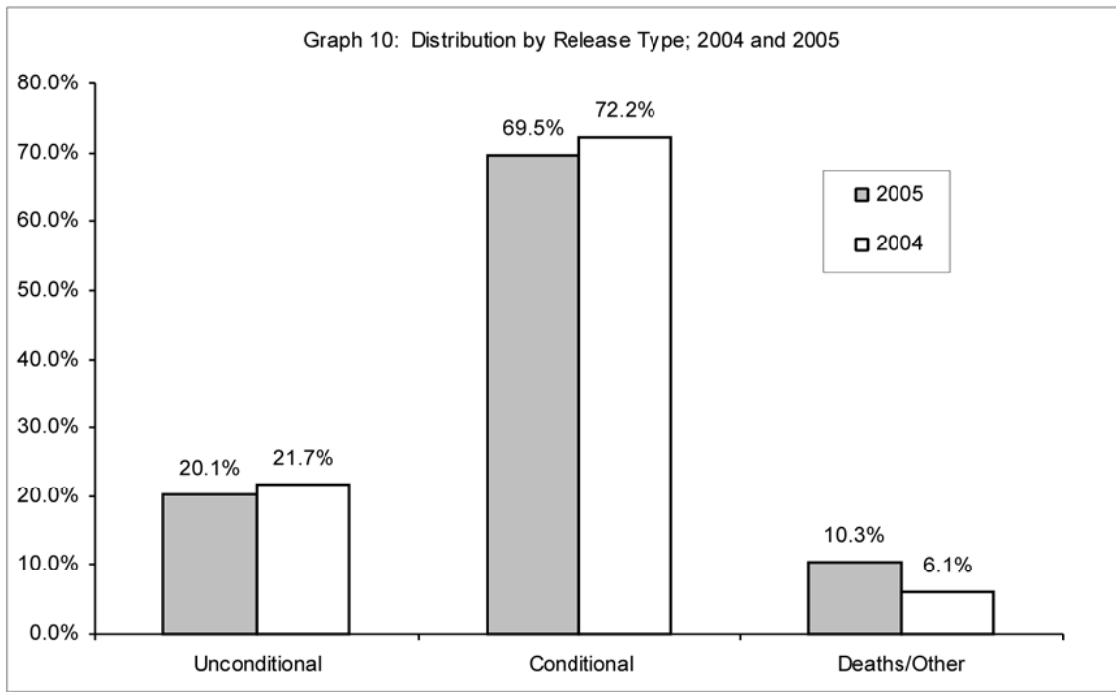


Table 31: Average Months Served by Inmates Initially Released in Calendar Years 1995 through 2005

| Year Released | Maximum Sentence Under 2 Years | | Maximum Sentence 2 Years and Over | | All Sentences | |
|---------------|--------------------------------|------------------------------|-----------------------------------|------------------------------|-----------------|------------------------------|
| | Number Released | Average Time Served (Months) | Number Released | Average Time Served (Months) | Number Released | Average Time Served (Months) |
| 1995 | 21 | 7.2 | 5,179 | 52.4 | 5,391 | 52.4 |
| 1996 | 16 | 11.7 | 4,446 | 44.4 | 4,462 | 44.4 |
| 1997 | 23 | 7.1 | 5,583 | 49.3 | 5,610 | 49.2 |
| 1998 | 35 | 18.6 | 5,537 | 54.9 | 5,572 | 54.6 |
| 1999 | 18 | 13.4 | 4,685 | 52.6 | 4,703 | 59.5 |
| 2000 | 35 | 13.1 | 7,073 | 50.3 | 7,108 | 50.1 |
| 2001 | 28 | 9.8 | 6,841 | 48.6 | 6,869 | 48.4 |
| 2002 | 29 | 13.8 | 6,809 | 48.8 | 6,838 | 48.4 |
| 2003 | 30 | 12.8 | 7,962 | 47.3 | 7,992 | 47.3 |
| 2004 | 30 | 13.7 | 9,046 | 43.2 | 9,076 | 43.1 |
| 2005 | 13 | 14.7 | 8,748 | 42.8 | 8,761 | 42.7 |

Note: Initial releases includes first time parolees, deaths, some maxout cases, vacated sentences, and vacated convictions. Initial releases does not include parole violators and some max out cases.

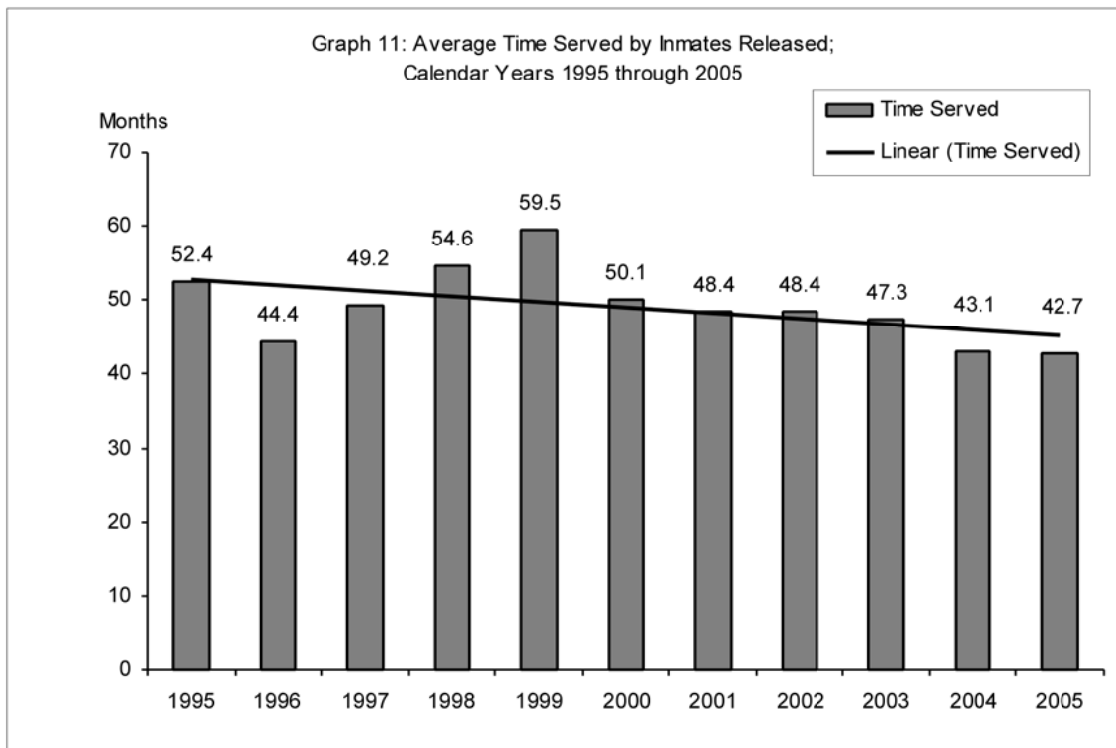


Table 32: Releases by Type for Inmates Serving a Life Sentence; Calendar Years 1995 through 2005

| Year Released | Commuted/Other* | Died | Total |
|---------------|-----------------|------------|------------|
| 1995 | 0 | 19 | 19 |
| 1996 | 0 | 19 | 19 |
| 1997 | 0 | 20 | 20 |
| 1998 | 0 | 24 | 24 |
| 1999 | 0 | 23 | 23 |
| 2000 | 0 | 36 | 36 |
| 2001 | 0 | 13 | 13 |
| 2002 | 0 | 31 | 31 |
| 2003 | 0 | 33 | 33 |
| 2004 | 2 | 35 | 37 |
| 2005 | 2 | 41 | 43 |
| Total | 4 | 294 | 298 |

* Refers to commuted lifers or those whose Life Sentence was vacated and who were released from the PA DOC.



Section IV

Miscellaneous



Miscellaneous

There were no breach escapes from institutions in 2005. There have been no breach escapes since 1999. There has only been one walk away from outside the institutions since 1998.

There were 86 walk aways from community correction centers in 2005.

The Department of Corrections' overall personnel complement consisted of 8,623 security staff and 5,326 other staff positions in 2005.

| Institution/Facility | 1995 | 1996 | 1997 | 1998 | 1999 | 2000 | 2001 | 2002 | 2003 | 2004 | 2005 |
|----------------------|----------|----------|----------|----------|----------|----------|----------|----------|----------|----------|----------|
| Albion | 0 | 0 | 0 | 0 | 0 | 0 | 0 | 0 | 0 | 0 | 0 |
| Cambridge Springs | 0 | 0 | 0 | 0 | 0 | 0 | 0 | 0 | 0 | 0 | 0 |
| Camp Hill | 0 | 0 | 0 | 0 | 0 | 0 | 0 | 0 | 0 | 0 | 0 |
| Chester | - | - | - | 0 | 0 | 0 | 0 | 0 | 0 | 0 | 0 |
| Coal Township | 0 | 0 | 0 | 0 | 0 | 0 | 0 | 0 | 0 | 0 | 0 |
| Cresson | 0 | 0 | 0 | 0 | 0 | 0 | 0 | 0 | 0 | 0 | 0 |
| Dallas | 0 | 0 | 0 | 0 | 2 | 0 | 0 | 0 | 0 | 0 | 0 |
| Fayette | - | - | - | - | - | - | - | - | 0 | 0 | 0 |
| Frackville | 0 | 0 | 0 | 0 | 0 | 0 | 0 | 0 | 0 | 0 | 0 |
| Graterford | 1 | 0 | 0 | 0 | 0 | 0 | 0 | 0 | 0 | 0 | 0 |
| Greene | 0 | 0 | 0 | 0 | 0 | 0 | 0 | 0 | 0 | 0 | 0 |
| Greensburg | 0 | 0 | 0 | 0 | 0 | 0 | 0 | 0 | 0 | 0 | 0 |
| Houtzdale | - | 0 | 0 | 0 | 0 | 0 | 0 | 0 | 0 | 0 | 0 |
| Huntingdon | 0 | 0 | 0 | 0 | 1 | 0 | 0 | 0 | 0 | 0 | 0 |
| Laurel Highlands | - | 0 | 0 | 0 | 0 | 0 | 0 | 0 | 0 | 0 | 0 |
| Mahanoy | 0 | 0 | 0 | 0 | 0 | 0 | 0 | 0 | 0 | 0 | 0 |
| Mercer | 0 | 0 | 0 | 0 | 0 | 0 | 0 | 0 | 0 | 0 | 0 |
| Muncy | 0 | 2 | 0 | 0 | 0 | 0 | 0 | 0 | 0 | 0 | 0 |
| Pittsburgh | 0 | 1 | 6 | 0 | 0 | 0 | 0 | 0 | 0 | 0 | 0 |
| Quehanna | 0 | 0 | 0 | 0 | 0 | 0 | 0 | 0 | 0 | 0 | 0 |
| Retreat | 0 | 0 | 0 | 0 | 0 | 0 | 0 | 0 | 0 | 0 | 0 |
| Rockview | 0 | 1 | 0 | 0 | 0 | 0 | 0 | 0 | 0 | 0 | 0 |
| Somerset | 0 | 0 | 0 | 0 | 0 | 0 | 0 | 0 | 0 | 0 | 0 |
| Smithfield | 0 | 0 | 0 | 0 | 0 | 0 | 0 | 0 | 0 | 0 | 0 |
| Waynesburg | 0 | 0 | 0 | 0 | 0 | 0 | 0 | 0 | 0 | 0 | 0 |
| Waymart | 0 | 0 | 0 | 0 | 0 | 0 | 0 | 0 | 0 | 0 | 0 |
| Total | 1 | 4 | 6 | 0 | 3 | 0 | 0 | 0 | 0 | 0 | 0 |

| Institution/Facility | 1995 | 1996 | 1997 | 1998 | 1999 | 2000 | 2001 | 2002 | 2003 | 2004 | 2005 |
|----------------------|-----------|------------|-----------|-----------|-----------|-----------|------------|------------|------------|------------|-----------|
| Albion | 0 | 0 | 1 | 0 | 0 | 0 | 0 | 0 | 0 | 0 | 0 |
| Cambridge Springs | 1 | 0 | 0 | 0 | 0 | 0 | 0 | 0 | 0 | 0 | 0 |
| Camp Hill | 0 | 1 | 1 | 0 | 0 | 0 | 0 | 0 | 0 | 0 | 0 |
| Chester | - | - | - | 0 | 0 | 0 | 0 | 0 | 0 | 0 | 0 |
| Coal Township | 0 | 0 | 0 | 0 | 0 | 0 | 0 | 0 | 0 | 0 | 0 |
| Cresson | 0 | 0 | 0 | 0 | 0 | 0 | 0 | 0 | 0 | 0 | 0 |
| Dallas | 0 | 0 | 0 | 1 | 0 | 0 | 0 | 0 | 0 | 0 | 0 |
| Fayette | - | - | - | - | - | - | - | - | 0 | 0 | 0 |
| Frackville | 0 | 0 | 0 | 0 | 0 | 0 | 0 | 0 | 0 | 0 | 0 |
| Graterford | 0 | 0 | 0 | 0 | 0 | 0 | 0 | 0 | 0 | 0 | 0 |
| Greene | 0 | 0 | 0 | 0 | 0 | 0 | 0 | 0 | 0 | 0 | 0 |
| Greensburg | 1 | 0 | 0 | 0 | 0 | 0 | 0 | 0 | 0 | 0 | 0 |
| Houtzdale | - | 0 | 0 | 0 | 0 | 0 | 0 | 0 | 0 | 0 | 1 |
| Huntingdon | 0 | 0 | 0 | 0 | 0 | 0 | 0 | 0 | 0 | 0 | 0 |
| Laurel Highlands | - | 0 | 1 | 0 | 0 | 0 | 0 | 0 | 0 | 0 | 0 |
| Mahanoy | 0 | 0 | 0 | 0 | 0 | 0 | 0 | 0 | 0 | 0 | 0 |
| Mercer | 0 | 0 | 0 | 0 | 0 | 0 | 0 | 0 | 0 | 0 | 0 |
| Muncy | 0 | 0 | 0 | 0 | 0 | 0 | 0 | 0 | 0 | 0 | 0 |
| Pittsburgh | 0 | 0 | 1 | 0 | 0 | 0 | 0 | 0 | 0 | 0 | 0 |
| Quehanna | 0 | 0 | 0 | 1 | 0 | 0 | 0 | 0 | 0 | 0 | 0 |
| Retreat | 0 | 0 | 0 | 0 | 0 | 0 | 0 | 0 | 0 | 0 | 0 |
| Rockview | 2 | 1 | 1 | 0 | 0 | 0 | 0 | 0 | 0 | 0 | 0 |
| Somerset | 0 | 0 | 1 | 1 | 0 | 0 | 0 | 0 | 0 | 0 | 0 |
| Smithfield | 0 | 0 | 0 | 0 | 0 | 0 | 0 | 0 | 0 | 0 | 0 |
| Waynesburg | 1 | 0 | 0 | 0 | 0 | 0 | 0 | 0 | 0 | 0 | 0 |
| Waymart | 0 | 0 | 0 | 0 | 0 | 0 | 0 | 0 | 0 | 0 | 0 |
| Sub-Total | 5 | 2 | 6 | 3 | 0 | 0 | 0 | 0 | 0 | 0 | 1 |
| CCCs | 69 | 98 | 78 | 69 | 71 | 73 | 161 | 126 | 126 | 109 | 86 |
| Total | 74 | 100 | 84 | 72 | 71 | 73 | 161 | 126 | 126 | 109 | 87 |

Table 35: Complement Control by Location as of December 31, 2005

| Facility | Other Staff | | Other Staff Total | Security Staff | | Security Staff Total | Grand Total |
|-------------------|--------------|--------------|-------------------|----------------|--------------|----------------------|---------------|
| | Female | Male | | Female | Male | | |
| Albion | 100 | 126 | 226 | 16 | 308 | 324 | 550 |
| Cambridge Springs | 86 | 50 | 136 | 90 | 71 | 161 | 297 |
| Camp Hill | 149 | 203 | 352 | 56 | 564 | 620 | 972 |
| Chester | 69 | 82 | 151 | 67 | 162 | 229 | 380 |
| Coal Twp | 87 | 138 | 225 | 15 | 276 | 291 | 516 |
| Cresson | 71 | 107 | 178 | 14 | 259 | 273 | 451 |
| Dallas | 89 | 151 | 240 | 14 | 439 | 453 | 693 |
| Forest | 110 | 108 | 218 | 22 | 376 | 398 | 616 |
| Frackville | 59 | 77 | 136 | 7 | 271 | 278 | 414 |
| Graterford | 152 | 209 | 361 | 121 | 620 | 741 | 1,102 |
| Greensburg | 53 | 81 | 134 | 13 | 214 | 227 | 361 |
| Greene | 104 | 134 | 238 | 10 | 466 | 476 | 714 |
| Houtzdale | 114 | 129 | 243 | 9 | 305 | 314 | 557 |
| Huntingdon | 96 | 128 | 224 | 14 | 408 | 422 | 646 |
| Laurel Highlands | 120 | 101 | 221 | 23 | 192 | 215 | 436 |
| Mahanoy | 94 | 116 | 210 | 17 | 304 | 321 | 531 |
| Mercer | 51 | 90 | 141 | 7 | 205 | 212 | 353 |
| Muncy | 106 | 77 | 183 | 150 | 109 | 259 | 442 |
| Pine Grove | 57 | 94 | 151 | 7 | 194 | 201 | 352 |
| Quehanna | 27 | 43 | 70 | 11 | 93 | 104 | 174 |
| Retreat | 63 | 75 | 138 | 7 | 186 | 193 | 331 |
| Rockview | 77 | 153 | 230 | 14 | 399 | 413 | 643 |
| Smithfield | 70 | 86 | 156 | 13 | 299 | 312 | 468 |
| Somerset | 93 | 132 | 225 | 10 | 309 | 319 | 544 |
| Waymart | 135 | 158 | 293 | 18 | 418 | 436 | 729 |
| Fayette | 102 | 144 | 246 | 24 | 407 | 431 | 677 |
| TOTAL | 2,334 | 2,992 | 5,326 | 769 | 7,854 | 8,623 | 13,949 |



Section VI

Glossary

Capacity: The maximum number of single cell beds a facility was originally designed for, plus beds added or eliminated due to renovations and/or additions.

Capital cases: Inmate found guilty of first degree murder and sentenced by a judge to death by execution.

Commutations: A change of a legal penalty or punishment to a lesser one. A commutation for an inmate serving a life sentence is the establishment of a parole date.

Conditional release: The release of an inmate from the Department of Corrections to another supervising authority. This method of release includes the following types:

State Parole: When an inmate is released to the community and is supervised by the Pennsylvania Board of Probation and Parole.

County Parole: When an inmate is released to the community and is supervised by the county probation/parole department.

Reparoled (State): When an inmate is paroled from a state correctional facility, returned to the Department of Corrections for a parole violation, serves time in the institution, and is again released to the community under supervision of the Pennsylvania Board of Probation and Parole.

County transfers: When an inmate serving a county sentence is transferred to the Department of Corrections. The reason for the transfer could be for security, medical, or mental health reasons.

Court Commitments: A commitment imposed by a court sentencing an individual to confinement in a state correctional facility.

Detentioners: An inmate who has not been sentenced to a Pennsylvania state correctional facility, but who is being housed in a Pennsylvania state correctional facility at the request of another jurisdiction such as a county, another state, or the federal government.

Escape: The intentional act of an inmate to leave the custody of the Department of Corrections. The act of escape includes the following types:

Breach escape: When an inmate, in the process of intentionally leaving the the custody of the Department of Corrections, compromises the security perimeter of the facility.

Walk away escape: When an inmate intentionally leaves the custody of the DOC while on an authorized release or furlough (i.e., work detail, medical treatment, educational release, etc.). A walk away, as opposed to a breach escape, does not compromise the security perimeter of the facility as it occurs outside the security perimeter (i.e., wall, fence, etc.).

Incarceration rate: The number of state sentenced inmates incarcerated per 100,000 Pennsylvania residents.

Lifer: An individual with a minimum and maximum sentence of natural life.

Minimum sentence: The minimum amount of time imposed by the court that an inmate must serve before being eligible for release from prison. This sentence cannot exceed one-half of the maximum sentence under the Pennsylvania statute.

Maximum sentence: The maximum amount of time spent imposed by the court that an inmate can be required to serve before being released from prison.

Non-recommit action: The release of a parolee who was returned to the department as a possible parole violator. If the return action is not adjudicated as a parole violation, the parolee is re-released to parole.

Offender: Generally refers to an individual who is convicted of an offense but who has not been received by the state by the state prison system. This term is used in the Receptions Section of this report to denote newly admitted individuals.

Parole violators: Persons paroled from prison who violated the terms and/or conditions of their parole. Parole violators are generally classified as technical or convicted violators. Technical violators are recommitted for failure to adhere to the requirements of their parole plan (i.e., non-reporting to agent or program, non-criminal drug violations, etc.), while convicted violators are found guilty of new criminal offenses. A technical/convicted violator is committed for violating conditions of parole in addition to being charged with commission of a new criminal offense.

Part I Offenses: Offenses identified by the Uniform Crime Report which are of a serious nature and are usually reported to law enforcement agencies. Crimes identified as Part I Offenses include: criminal homicide, forcible rape, robbery, assault, burglary, larceny-theft, motor vehicle theft and arson.

Part II Offenses: Offenses not classified as Part I Offense as defined above because they are less serious crimes. Crimes identified as Part II offenses include: fraud, stolen property, forgery, narcotic drugs, and drunken driving.

Reparole: A parole release after a previous parole revocation. The initial parole and subsequent reparole occur during the same sentence.

Sentenced: Inmates who are serving time on court-imposed sentences. (Does not include inmates who are serving time because of parole violations.)

Uniform Crime Report (UCR) Offense Groupings: Offense classifications employed by Pennsylvania's criminal justice system. In order to remain compatible with the Federal Bureau of Investigation, the categories of offense classification utilized are the same as those employed at the national level. The crimes defined in this classification system are grouped as Part I or Part II offenses.

Unconditional release: The means of release for inmates who have either served their maximum sentence or have had their sentences reduced or vacated by the court (e.g., max out, executed, court order, etc.).

Victim comments: Oral and written statements describing the impact of crime on the victim's feelings regarding pre-release of a particular offender.

Victim registration: When crime victims request to be informed as to the status of offenders who perpetrated criminal acts against them or a family member. The registration occurs in the victim input and notification program as administered by the Office of the Victim Advocate.