

Annual Statistical Report

Pennsylvania Department of Corrections



2008

Edward G. Rendell
Governor

Jeffrey A. Beard, Ph.D.
Secretary

PRS&G Overview

The Bureau of Planning, Research, Statistics and Grants directs the maintenance of historical data records for the Department and conducts ongoing planning, research, and evaluation activities designed to provide key decision-makers with quantitative data analysis for use in formulating and evaluating departmental policies and practices. Specific functions performed by the Office include planning, program evaluation, data analysis, statistical repository, policy development and analysis, grant preparation and oversight.

James Schaefer, Director
PRS&G

STAFF

Michael Antonio.....Research and Evaluation Analyst
Kristofer Bret BucklenChief of Projections and Population Statistics
Mark Emery.....Security Data Analyst
Robert FlahertyChief of Data Analysis & Management Support
Bonnie GasswintPopulation and Projections Analyst
Michael HartmanWebmaster
Jessica Hathaway.....Grants Manager
Amy Houser.....Clerical Support
Dean Lategan.....Population and Projections Analyst
William Parkes.....Data Analyst
Gary Zajac, Ph.DChief of Research and Evaluation
Jacqueline Young.....Research and Evaluation Analyst
Jesse Zortman.....Research and Evaluation Analyst

Annual Statistical Report



Report Preparation

Authors.....Mark Emery
Michael Hartman
Dean Lategan

Technical and Editorial Support.....PRS&G Staff

Note: Statistics in this report will not match statistics reported in the Bureau of Justice Statistics (BJS) "Prisoners in 2008" report. The BJS report is a national report based on a survey of all 50 states, containing different accounting rules from those used to generate this report. The primary difference is that this report counts all inmates under Pennsylvania Department of Corrections custody, whereas most of the tables/figures in the BJS report only include inmates who are sentenced and who have a maximum sentence of 1 year or more.

For additional information contact
The Bureau of Planning, Research, Statistics and Grants
at
(717) 214-8959 Fax (717) 731- 7830



Secretary
Jeffrey A. Beard, Ph.D.



COMMONWEALTH OF PENNSYLVANIA
DEPARTMENT OF CORRECTIONS
P.O. BOX 598
CAMP HILL, PENNSYLVANIA 17001-0598
(717) 975-4859

We are pleased to present the 2008 Annual Statistical Report on Pennsylvania's state prison system. This report provides a statistical overview of inmates admitted to, incarcerated in, and released from the Pennsylvania Department of Corrections in Calendar Year 2008. In addition, the report also offers a limited historical perspective on inmate profile changes for calendar years 1998 through 2008.

As Pennsylvania's inmate population continues to grow, the Department is committed to providing timely, accurate, and reliable data to policy makers and correctional administrators in order to ensure effective planning and evaluation practices. This information is used to effectively manage the Department's more than 14,000 employees, 26 prisons, 49 community corrections centers and facilities, one motivational boot camp, and more than 49,000 inmates.

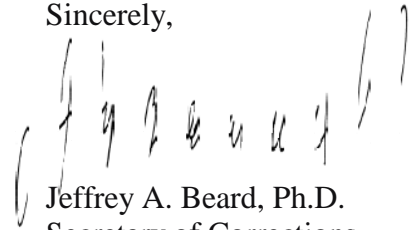
We trust that this annual statistical report will serve to increase your understanding of the state prison system, its inmate population, and the significant challenges which the Department, as well as Pennsylvania's entire criminal justice system, are currently addressing. In particular, this report highlights the significant impact of two high profile and tragic cases of inmates who were granted parole and subsequently involved in the murders of Philadelphia police officers in late 2008.

In order to ensure proper protocol was being followed and that offenders were not being inappropriately released, a parole moratorium went into effect on September 29, 2008. From September 29 through October 24, inmate paroles ceased completely. After October 24, parole resumed for non-violent offenders only. On December 1, the moratorium was lifted, and parole resumed for all eligible offenders, although at a much lower rate. From September 29, 2008 through December 31, 2008, our state inmate population increased by a total of 2,300 offenders, from 46,700 to 49,000.

Population projections completed prior to the moratorium predicted that our population would grow by approximately 500 inmates over that three-month time period. However, our population increased by 1,800 more inmates than forecasted as a result of the moratorium, more than tripling the number of additional inmates expected. In addition, the parole rate prior to the moratorium was 58%, and decreased to a rate of 38% following the violent incidents that led to the decision to suspend conditional releases.

As a result of the parole moratorium, the significant decrease in parole rate, and the Department's implementation of a new classification instrument for violent offenders, the *Offender Violence Risk Typology*, the statistics in various charts, graphs, and tables for 2008 will look much different from the previous year, particularly through the months of October, November, and December. Looking ahead, it is important to note that Department statistics for the first-half of 2009 will also be impacted by the dynamic changes that occurred in the latter part of 2008.

Sincerely,

A handwritten signature in black ink, appearing to read "Jeffrey A. Beard". The signature is written in a cursive style with some loops and flourishes.

Jeffrey A. Beard, Ph.D.
Secretary of Corrections

Section I: Receptions

Receptions Highlights.....	9
Table 1: State Prison Receptions by Type and Offender Gender, 1998 through 2008.....	11
Table 2: State Prison Receptions by Committing County and Offender Gender in 2008.....	12
Table 3: Ten Counties with the Highest Court Commitment Activity in 2008.....	13
Table 4: Court Commitments by County For 2008 and 2008.....	14
Table 5: Court Commitments Received from 1998 through 2008 by Age Group	15
Table 6: Profile of Court Commitments Received by Age, Race, and Gender in 2008.....	16
Table 7: Profile of Court Commitments Received by Age, Race, and Gender in 2007.....	16
Table 8: Comparison of Court Commitments by Uniform Crime Report (UCR) Offense..... Groupings for 2007 and 2008	17
Table 9: Court Commitments by Minimum Sentence and Offender Gender in 2008.....	18
Table 10: Court Commitments by Maximum Sentence and Offender Gender in 2008.....	19
Table 11: Profile of Offenders Serving a Life Sentence Received from 1998 through 2008.....	20

Section II: Population

Population Highlights.....	23
Table 12: Rank Order of Ten Counties with Highest Incarceration Rate for 2007 and 2008.....	25
Table 13: Inmate Population by County and Gender on December 31; Calendar Years 2007..... and 2008	26
Table 14: Rank-Ordered Comparison of Civilian Population and State Incarceration for 2007.... and 2008	27
Table 15: Inmate Population versus State Institutional Capacity from 1998 through 2008.....	28
Table 16: Month-End Population from January 1998 through December 2008.....	29
Table 17: Inmate Population by Facility, Race, Gender, and Age on December 31, 2007.....	30
Table 18: Inmate Population by Facility, Race, Gender, and Age on December 31, 2008.....	30
Table 19: UCR Offense Groupings by Inmate Race and Gender as of December 31, 2008	31
Table 20: Status of Inmates on December 31; Calendar Years 1998 through 2008.....	32

Contents

Table 21: Inmates by Primary UCR Offense on December 31; Calendar Years 2007 and 2008.....	33
with 2008 Average Sentence Length	
Table 22: Demographic Profile of Inmates on December 31; Calendar Years 2007 and 2008.....	34
Table 23: Long-Term Inmates on December 31; Calendar Years 2007 and 2008.....	35
Table 24: Number of Inmates by Facility Serving a Life Sentence on December 31;.....	35
Calendar Years 2007 and 2008	
Table 25: Ten Highest Counties with Inmates Serving a Life Sentence;.....	36
Calendar Years 2007 and 2008	
Table 26: Age of Inmates Serving a Life Sentence on December 31;.....	36
Calendar Years 2007 and 2008	
Table 27: Time Served by Inmates Serving Life as of December 31;.....	37
Calendar Years 2007 and 2008	
Table 28: Profile of Inmates Under Death Sentence on December 31;.....	37
Calendar Years 2007 and 2008	

Section III: Releases

Releases Highlights.....	41
Table 29: Average Time Served by Offense for Inmates Released During 2008.....	43
Table 30: Inmate Releases by Type for Calendar Years 2007 and 2008.....	44
Table 31: Average Months Served by Inmates Initially Released in Calendar Years 1998.....	45
through 2008	
Table 32: Releases by Type for Inmates Serving a Life Sentence; Calendar Years 1998.....	46
through 2008	

47

Section IV: Miscellaneous

Miscellaneous Highlights.....	51
Table 33: Number of Breach Escapes from 1998 through 2008 by Facility.....	52
Table 34: Number of Walk Away Escapes from 1998 through 2008 by Facility.....	52
Table 35: Complement Control by Location as of December 31, 2008.....	53

Section V: Glossary

Glossary.....	56-57
---------------	-------

Graphs

Graph 1: State Prison Receptions by Type; 1998 to 2008.....	11
Graph 2: Court Commitments by Major Contributing Counties; 2008.....	13
Graph 3: Percentage of Court Commitments by Age Group; 1998 Compared to 2008.....	15
Graph 4: Court Commitments by Minimum Sentence Distribution; 2007 and 2008.....	18
Graph 5: Court Commitments by Maximum Sentence Distribution; 2007 and 2008.....	19
Graph 6: Incarceration Rates for the Top Ten Counties; 2007 and 2008.....	25
Graph 7: Offender Population versus State Prison Capacity; 1998 to 2008.....	28
Graph 8: Monthly Population Change 1998, 2003, and 2008.....	29
Graph 9: Inmate Status as of Year-End; 1998 to 2008.....	32
Graph 10: Distribution by Release Type; 2007 and 2008.....	44
Graph 11: Average Time Served by Inmates Released; Calendar Years 1998 through 2008.....	45



Section I

Receptions



Receptions

Between 1998 and 2008, the number of inmates admitted into the Department increased by 60%, from 10,578 in 1998 to 16,907 in 2008.

From 1998 through 2008, the number of parole violator admissions increased by 59%, from 3,826 in 1998 to 6,101 in 2008.

The number of court commitments grew by 62%, from 6,653 in 1998, to 10,783 in 2008.

Philadelphia County accounted for 23.4% of all new court commitments in 2008.

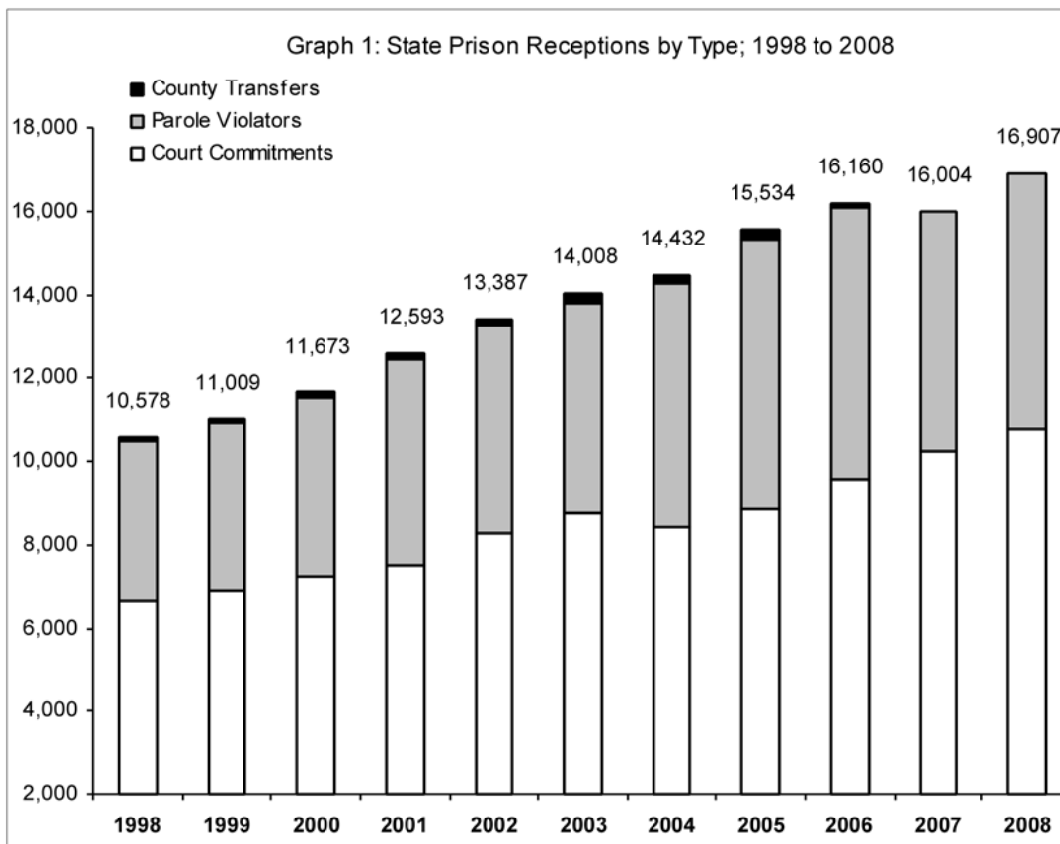
In 2008, more than half (54%) of all new court commitments were sentenced to a minimum sentence of two years or less. These inmates may be eligible of some type of release in 2010.

Of the total new court commitments, 75.8% received a maximum sentence of ten years or less. These inmates will complete their sentence and be released back to the community no later than 2018.

Table 1: State Prison Receptions by Type and Offender Gender, 1998 through 2008

Year	Court Commitments			Parole Violators			County Transfers			Annual Total
	Male	Female	Sub-total	Male	Female	Sub-total	Male	Female	Sub-total	
1998	6,155	498	6,653	3,647	179	3,826	98	1	99	10,578
1999	6,416	483	6,899	3,818	182	4,000	107	3	110	11,009
2000	6,680	523	7,203	4,157	191	4,348	121	1	122	11,673
2001	6,924	586	7,510	4,682	273	4,955	122	6	128	12,593
2002	7,633	633	8,266	4,727	241	4,968	150	3	153	13,387
2003	8,067	693	8,760	4,786	242	5,028	215	5	220	14,008
2004	7,752	683	8,435	5,472	336	5,808	186	3	189	14,432
2005	8,027	803	8,830	6,186	319	6,505	196	3	199	15,534
2006	8,751	827	9,578	6,154	363	6,517	62	3	65	16,160
2007	9,326	896	10,222	5,473	280	5,753	27	2	29	16,004
2008	9,867	916	10,783	5,832	269	6,101	20	3	23	16,907

Note: Beginning in 1996, County Transfer totals include individuals admitted to the Forensic Psychiatric Unit at SCI Waymart.



Receptions

Table 2: State Prison Receptions by Committing County and Offender Gender in 2008

County	Court Commitments			Parole Violators			County Transfers			Total			% of Total
	Male	Female	Sub-Total	Male	Female	Sub-Total	Male	Female	Sub-Total	Male	Female	Total	
Adams	99	14	113	31	3	34	0	0	0	130	17	147	0.9%
Allegheny	671	40	711	512	14	526	0	0	0	1,183	54	1,237	7.3%
Armstrong	28	6	34	14		14	0	0	0	42	6	48	0.3%
Beaver	59	3	62	46	4	50	0	0	0	105	7	112	0.7%
Bedford	35	3	38	17		17	0	0	0	52	3	55	0.3%
Berks	410	52	462	221	18	239	0	0	0	631	70	701	4.1%
Blair	121	22	143	44	3	47	0	0	0	165	25	190	1.1%
Bradford	42	5	47	25	2	27	1	1	1	68	7	75	0.4%
Bucks	326	25	351	84	4	88	1	1	1	411	29	440	2.6%
Butler	119	7	126	53	5	58	0	0	0	172	12	184	1.1%
Cambria	29	3	32	29	1	30	0	0	0	58	4	62	0.4%
Cameron	11	3	14	1		1	0	0	0	12	3	15	0.1%
Carbon	23	3	26	10		10	0	0	0	33	3	36	0.2%
Centre	44	6	50	15	3	18	0	0	0	59	9	68	0.4%
Chester	216	15	231	88	1	89	0	0	0	304	16	320	1.9%
Clarion	25	3	28	5	1	6	1	1	1	31	4	35	0.2%
Clearfield	127	27	154	54	4	58	1	1	1	182	31	213	1.3%
Clinton	25	6	31	10	2	12		2	2	35	10	45	0.3%
Columbia	22	7	29	14	3	17	0	0	0	36	10	46	0.3%
Crawford	61	12	73	30	1	31	0	0	0	91	13	104	0.6%
Cumberland	68	7	75	36	1	37	0	0	0	104	8	112	0.7%
Dauphin	422	43	465	309	17	326	0	0	0	731	60	791	4.7%
Delaware	446	30	476	180	6	186	0	0	0	626	36	662	3.9%
Elk	10		10	9		9	0	0	0	19	0	19	0.1%
Erie	291	43	334	212	13	225	0	0	0	503	56	559	3.3%
Fayette	171	59	230	88	8	96	0	0	0	259	67	326	1.9%
Forest	5		5	4		4	0	0	0	9	0	9	0.1%
Franklin	86	11	97	106	7	113	0	0	0	192	18	210	1.2%
Fulton	14	1	15	13	2	15	0	0	0	27	3	30	0.2%
Greene	14	1	15	12	1	13	0	0	0	26	2	28	0.2%
Huntingdon	28	4	32	19		19	1	1	1	48	4	52	0.3%
Indiana	38	6	44	12	2	14	0	0	0	50	8	58	0.3%
Jefferson	57	7	64	24	2	26	0	0	0	81	9	90	0.5%
Juniata	12	2	14	5		5	0	0	0	17	2	19	0.1%
Lackawanna	223	20	243	141	15	156	0	0	0	364	35	399	2.4%
Lancaster	303	27	330	117	3	120	0	0	0	420	30	450	2.7%
Lawrence	73	6	79	40	8	48	0	0	0	113	14	127	0.8%
Lebanon	192	26	218	67	2	69	0	0	0	259	28	287	1.7%
Lehigh	268	27	295	166	6	172	0	0	0	434	33	467	2.8%
Luzerne	222	26	248	85	7	92	0	0	0	307	33	340	2.0%
Lycoming	118	16	134	108	11	119	0	0	0	226	27	253	1.5%
Mckean	37	6	43	13		13	0	0	0	50	6	56	0.3%
Mercer	62	5	67	47	10	57	2	2	2	111	15	126	0.7%
Mifflin	31	1	32	11		11	0	0	0	42	1	43	0.3%
Monroe	88	7	95	26	2	28	0	0	0	114	9	123	0.7%
Montgomery	333	30	363	192	13	205	10	10	10	535	43	578	3.4%
Montour	17	3	20	4		4	0	0	0	21	3	24	0.1%
Northampton	204	21	225	122	3	125	0	0	0	326	24	350	2.1%
Northumberland	44	4	48	27	5	32		1	1	71	10	81	0.5%
Perry	25	6	31	10	2	12	0	0	0	35	8	43	0.3%
Philadelphia	2,423	102	2525	1,769	27	1,796	2	2	2	4,194	129	4,323	25.6%
Pike	34	3	37	14		14	0	0	0	48	3	51	0.3%
Potter	11		11	1		1	0	0	0	12	0	12	0.1%
Schuylkill	117	10	127	23	1	24	0	0	0	140	11	151	0.9%
Snyder	35	4	39	28		28	0	0	0	63	4	67	0.4%
Somerset	20	4	24	29		29	0	0	0	49	4	53	0.3%
Sullivan	1		1	2		2	0	0	0	3	0	3	0.0%
Susquehanna	14	1	15	5		5	0	0	0	19	1	20	0.1%
Tioga	24	4	28	6		6	0	0	0	30	4	34	0.2%
Union	26	2	28	8	2	10	0	0	0	34	4	38	0.2%
Unknown/Others			0	6		6	0	0	0	6	0	6	0.0%
Venango	61	9	70	39	1	40	0	0	0	100	10	110	0.7%
Warren	48	11	59	14	3	17	0	0	0	62	14	76	0.4%
Washington	100	9	109	40	4	44	0	0	0	140	13	153	0.9%
Wayne	45	9	54	29	2	31	0	0	0	74	11	85	0.5%
Westmoreland	134	14	148	60	3	63	0	0	0	194	17	211	1.2%
Wyoming	14	2	16	15	1	16	1	1	1	30	3	33	0.2%
York	365	25	390	236	10	246	0	0	0	601	35	636	3.8%
Total	9,867	916	10783	5,832	269	6,101	20	3	23	15,719	1,188	16,907	100.0%

Note: Total may not equal 100% due to rounding.

Table 3: Ten Counties with the Highest Court Commitment Activity in 2008

Rank	County	Court Commitments	% of State Total
1	Philadelphia	2,525	23.4%
2	Allegheny	711	6.6%
3	Delaware	476	4.4%
4	Dauphin	465	4.3%
5	Berks	462	4.3%
6	York	390	3.6%
7	Montgomery	363	3.4%
8	Bucks	351	3.3%
9	Erie	334	3.1%
10	Lancaster	330	3.1%
	Sub-Total	6,407	59.4%
	Remaining Counties	4,376	40.6%
	State Total	10,783	100.0%

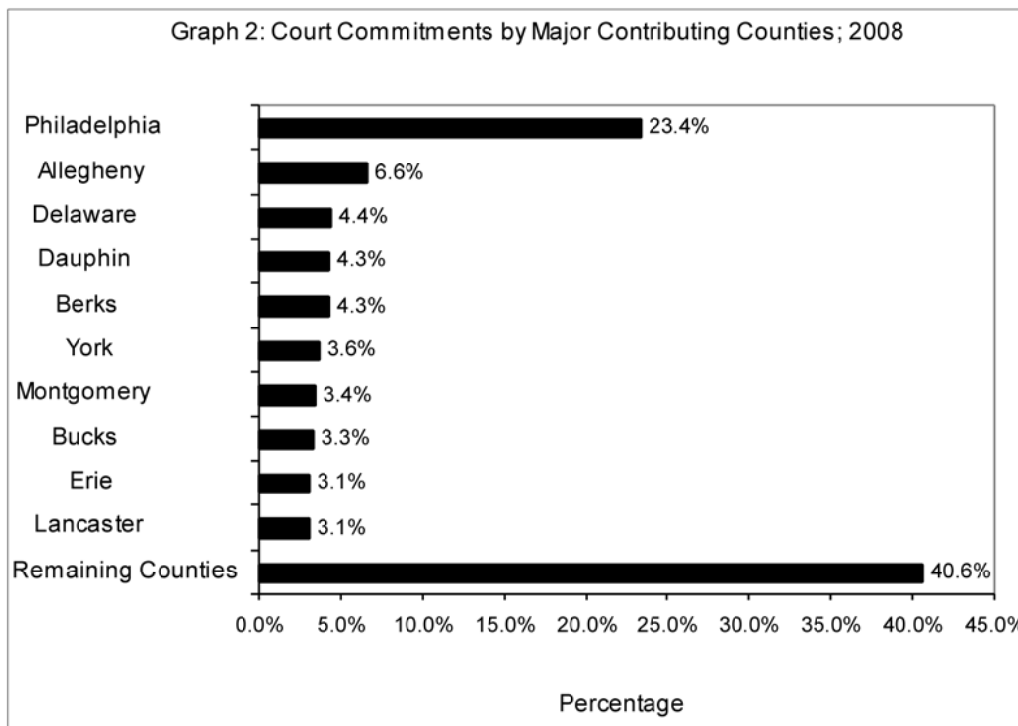
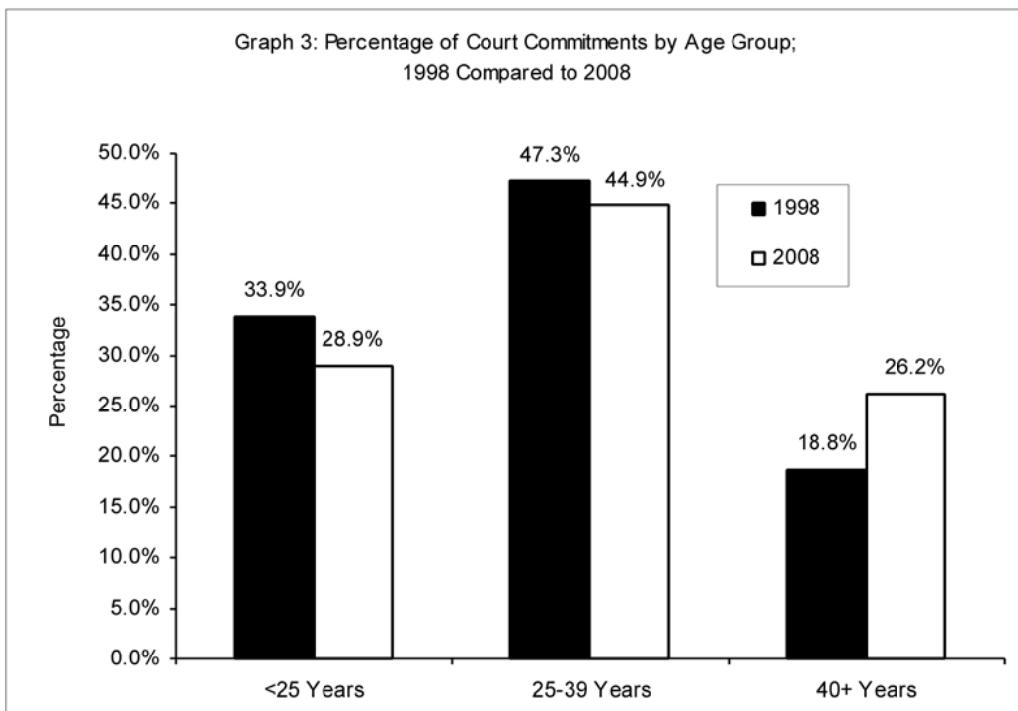


Table 4: Court Commitments by County for 2007 and 2008

County	Court Commitments		Growth Factor %
	2007	2008	
Adams	84	113	34.5
Allegheny	612	711	16.2
Armstrong	26	34	30.8
Beaver	72	62	-13.9
Bedford	38	38	0.0
Berks	473	462	-2.3
Blair	171	143	-16.4
Bradford	32	47	46.9
Bucks	231	351	51.9
Butler	111	126	13.5
Cambria	39	32	-17.9
Cameron	5	14	180.0
Carbon	24	26	8.3
Centre	40	50	25.0
Chester	270	231	-14.4
Clarion	39	28	-28.2
Clearfield	158	154	-2.5
Clinton	8	31	287.5
Columbia	26	29	11.5
Crawford	84	73	-13.1
Cumberland	81	75	-7.4
Dauphin	423	465	9.9
Delaware	423	476	12.5
Elk	17	10	-41.2
Erie	303	334	10.2
Fayette	220	230	4.5
Forest	8	5	-37.5
Franklin	84	97	15.5
Fulton	13	15	15.4
Greene	27	15	-44.4
Huntingdon	6	32	433.3
Indiana	40	44	10.0
Jefferson	51	64	25.5
Juniata	6	14	133.3
Lackawanna	251	243	-3.2
Lancaster	355	330	-7.0
Lawrence	63	79	25.4
Lebanon	206	218	5.8
Lehigh	256	295	15.2
Luzerne	249	248	-0.4
Lycoming	150	134	-10.7
Mckean	43	43	0.0
Mercer	80	67	-16.3
Mifflin	28	32	14.3
Monroe	69	95	37.7
Montgomery	303	363	19.8
Montour	15	20	33.3
Northampton	203	225	10.8
Northumberland	65	48	-26.2
Perry	28	31	10.7
Philadelphia	2,520	2,525	0.2
Pike	28	37	32.1
Potter	13	11	-15.4
Schuylkill	112	127	13.4
Snyder	28	39	39.3
Somerset	44	24	-45.5
Sullivan	3	1	0.0
Susquehanna	14	15	7.1
Tioga	12	28	133.3
Union	39	28	-28.2
Venango	90	70	-22.2
Warren	43	59	37.2
Washington	59	109	84.7
Wayne	44	54	22.7
Westmoreland	126	148	17.5
Wyoming	13	16	23.1
York	424	390	-8.0
Unknown/Others	1	0	0.0
Total	10,222	10,783	5.5

Table 5: Court Commitments Received from 1998 through 2008 by Age Group

Age	1998	1999	2000	2001	2002	2003	2004	2005	2006	2007	2008
Under 18	64	44	43	34	32	66	46	25	38	45	76
18-20	738	809	752	707	706	889	883	650	787	810	993
21-24	1,455	1,476	1,643	1,650	1,793	1,845	1,769	1,749	1,846	2,032	2,043
25-29	1,213	1,285	1,256	1,396	1,505	1,619	1,664	1,731	1,887	2,069	2,124
30-34	1,042	1,027	1,067	1,165	1,223	1,243	1,146	1,252	1,293	1,375	1,482
35-39	892	947	986	949	1,144	1,135	978	1,107	1,209	1,177	1,235
40-44	608	668	725	769	894	902	916	1,018	1,033	1,130	1,121
45-49	319	336	420	451	541	555	530	703	743	806	872
50-54	149	174	179	204	239	283	292	318	424	455	484
55-59	91	82	70	109	101	129	125	167	183	192	209
60-64	49	29	34	46	53	51	47	67	93	92	96
65 and Over	33	22	28	30	35	43	39	43	42	39	48
Total	6,653	6,899	7,203	7,510	8,266	8,760	8,435	8,830	9,578	10,222	10,783
% Under 25	33.9	33.8	33.8	31.8	30.6	32.0	32.0	27.5	27.9	28.2	28.9
% 25 - 39 Years	47.3	47.2	45.9	46.7	46.8	45.6	44.9	46.3	45.8	45.2	44.9
% 40 and Over	18.8	19.0	20.2	21.4	22.5	22.4	23.1	26.2	26.3	26.6	26.2



Receptions

Table 6: Profile of Court Commitments Received by Age, Race, and Gender in 2008

Age	Race								Gender				Total
	White		Black		Hispanic		Other		Male		Female		
	Number	%	Number	%	Number	%	Number	%	Number	%	Number	%	
Under 18	10	0.1%	55	0.5%	11	0.1%	0	0.0%	74	0.7%	2	0.0%	76
18-20	278	2.6%	591	5.5%	115	1.1%	9	0.1%	950	8.8%	43	0.4%	993
21-24	804	7.5%	988	9.2%	236	2.2%	15	0.1%	1,910	17.7%	134	1.2%	2,044
25-29	880	8.2%	920	8.5%	313	2.9%	10	0.1%	1,936	18.0%	187	1.7%	2,123
30-34	642	6.0%	609	5.6%	220	2.0%	10	0.1%	1,350	12.5%	131	1.2%	1,482
35-39	553	5.1%	510	4.7%	166	1.5%	3	0.0%	1,098	10.2%	134	1.2%	1,235
40-44	565	5.2%	454	4.2%	98	0.9%	3	0.0%	993	9.2%	127	1.2%	1,121
45-49	463	4.3%	318	2.9%	83	0.8%	7	0.1%	769	7.1%	102	0.9%	872
50-54	246	2.3%	199	1.8%	37	0.3%	1	0.0%	448	4.2%	35	0.3%	484
55-59	121	1.1%	64	0.6%	23	0.2%	1	0.0%	197	1.8%	12	0.1%	209
60-64	59	0.5%	27	0.3%	9	0.1%	1	0.0%	93	0.9%	3	0.0%	96
65 and Over	36	0.3%	7	0.1%	5	0.0%	0	0.0%	45	0.4%	3	0.0%	48
Total	4,657	43.2%	4,742	44.0%	1,316	12.2%	60	0.6%	9,863	91.5%	913	8.5%	10,783
% Under 25	23.4%	-	34.5%	-	27.5%	-	40.0%	-	29.7%	-	19.6%	-	28.9%
% 25 to 39	44.6%	-	43.0%	-	53.1%	-	38.3%	-	44.4%	-	49.5%	-	44.9%
% 40 & Over	32.0%	-	22.5%	-	19.4%	-	21.7%	-	25.8%	-	30.9%	-	26.2%

Table 7: Profile of Court Commitments Received by Age, Race, and Gender in 2007

Age	Race								Gender				Total
	White		Black		Hispanic		Other		Male		Female		
	Number	%	Number	%	Number	%	Number	%	Number	%	Number	%	
Under 18	8	0.1%	31	0.3%	6	0.1%	0	0.0%	44	0.4%	1	0.0%	45
18-20	232	2.3%	474	4.6%	99	1.0%	5	0.0%	784	7.7%	26	0.3%	810
21-24	710	6.9%	1,061	10.4%	248	2.4%	13	0.1%	1,915	18.7%	117	1.1%	2,032
25-29	817	8.0%	972	9.5%	267	2.6%	13	0.1%	1,915	18.7%	154	1.5%	2,069
30-34	584	5.7%	593	5.8%	192	1.9%	6	0.1%	1,237	12.1%	138	1.4%	1,375
35-39	564	5.5%	472	4.6%	140	1.4%	1	0.0%	1,040	10.2%	137	1.3%	1,177
40-44	598	5.9%	418	4.1%	109	1.1%	5	0.0%	975	9.5%	155	1.5%	1,130
45-49	416	4.1%	324	3.2%	65	0.6%	1	0.0%	711	7.0%	95	0.9%	806
50-54	254	2.5%	166	1.6%	34	0.3%	1	0.0%	414	4.1%	41	0.4%	455
55-59	112	1.1%	65	0.6%	14	0.1%	1	0.0%	172	1.7%	20	0.2%	192
60-64	53	0.5%	28	0.3%	9	0.1%	2	0.0%	86	0.8%	6	0.1%	92
65 and Over	29	0.3%	8	0.1%	2	0.0%	0	0.0%	33	0.3%	6	0.1%	39
Total	4,377	42.8%	4,612	45.1%	1,185	11.6%	48	0.5%	9,326	91.2%	896	8.8%	10,222
% Under 25	21.7%	-	34.0%	-	29.8%	-	37.5%	-	29.4%	-	16.1%	-	28.2%
% 25 to 39	44.9%	-	44.1%	-	50.5%	-	41.7%	-	45.0%	-	47.9%	-	45.2%
% 40 & Over	33.4%	-	21.9%	-	19.7%	-	20.8%	-	25.6%	-	36.0%	-	26.6%

Table 8: Comparison of Court Commitments by Offense for 2007 and 2008

Part I Offenses	2007		2008		Change 2007-2008	
	Number	%	Number	%	Number	%
Murder						
First Degree	49	0.5%	104	1.0%	55	112.2%
Second Degree	20	0.2%	27	0.3%	7	35.0%
Third Degree	175	1.7%	190	1.8%	15	8.6%
Unspecified	17	0.2%	1	0.0%	-16	-94.1%
Manslaughter						
Voluntary	30	0.3%	25	0.2%	-5	-16.7%
Involuntary	21	0.2%	27	0.3%	6	28.6%
Aggravated Assault	738	7.2%	822	7.6%	84	11.4%
Arson	48	0.5%	55	0.5%	7	14.6%
Burglary	596	5.8%	620	5.7%	24	4.0%
Forcible Rape	178	1.7%	178	1.7%	0	0.0%
Homicide by Vehicle	60	0.6%	74	0.7%	14	23.3%
Robbery	1013	9.9%	940	8.7%	-73	-7.2%
Theft/Larceny	704	6.9%	783	7.3%	79	11.2%
Total Part I Offenses	3,649	35.7%	3,846	35.7%	197	5.4%
Part II Offenses						
DUI	534	5.2%	668	6.2%	134	25.1%
Forgery	137	1.3%	140	1.3%	3	2.2%
Fraud	51	0.5%	55	0.5%	4	7.8%
Kidnapping	22	0.2%	24	0.2%	2	9.1%
Narcotic Drug Laws	3,294	32.2%	3,366	31.2%	72	2.2%
Other Assaults	134	1.3%	175	1.6%	41	30.6%
Other Sex Offenses	461	4.5%	551	5.1%	90	19.5%
Prison Breach	122	1.2%	110	1.0%	-12	-9.8%
Receiving Stolen Property	152	1.5%	131	1.2%	-21	-13.8%
Statutory Rape	167	1.6%	191	1.8%	24	14.4%
Weapons	550	5.4%	664	6.2%	114	20.7%
Other Part II Offenses	949	9.3%	862	8.0%	-87	-9.2%
Total Part II Offenses	6,573	64.3%	6,937	64.3%	364	5.5%
Other	0	0.0%	0	0.0%	0	0.0%
Total Offenses	10,222	100.0%	10,783	100.0%	561	5.5%

Note: More accurate data collection methods have led to an increase in certain Part II categories, such as DUI, and a decrease in Other Part II Offenses.

Table 9: Court Commitments by Minimum Sentence and Offender Gender in 2008

Minimum Sentence	Male		Female		Total	
	Number	%	Number	%	Number	%
1 Year And Under	2,126	22.8%	365	35.4%	2,491	23.1%
Over 1 To 2 Years	3,067	30.8%	313	37.6%	3,380	31.3%
Over 2 To 3 Years	764	17.3%	43	13.3%	807	7.5%
Over 3 To 5 Years	2,548	15.2%	133	7.3%	2,681	24.9%
Over 5 To 10 Years	776	8.3%	30	4.4%	806	7.5%
Over 10 To 20 Years	314	3.2%	20	1.0%	334	3.1%
Over 20 Years	118	0.9%	3	0.6%	121	1.1%
Life	120	1.3%	9	0.4%	129	1.2%
Death Sentence	5	0.1%	0	0.0%	5	0.0%
Not Reported As Of Year End	29	0.2%	0	0.1%	29	0.3%
Total	9,867	100.0%	916	100.0%	10,783	100.0%

Note: Totals may not equal 100% due to rounding.

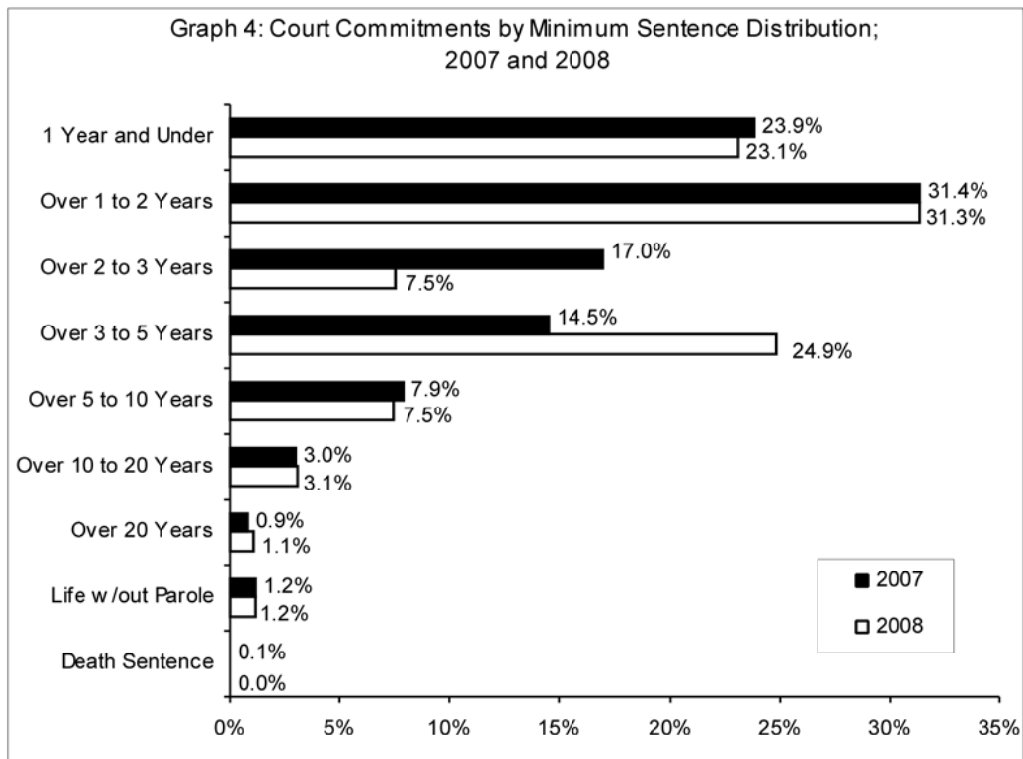
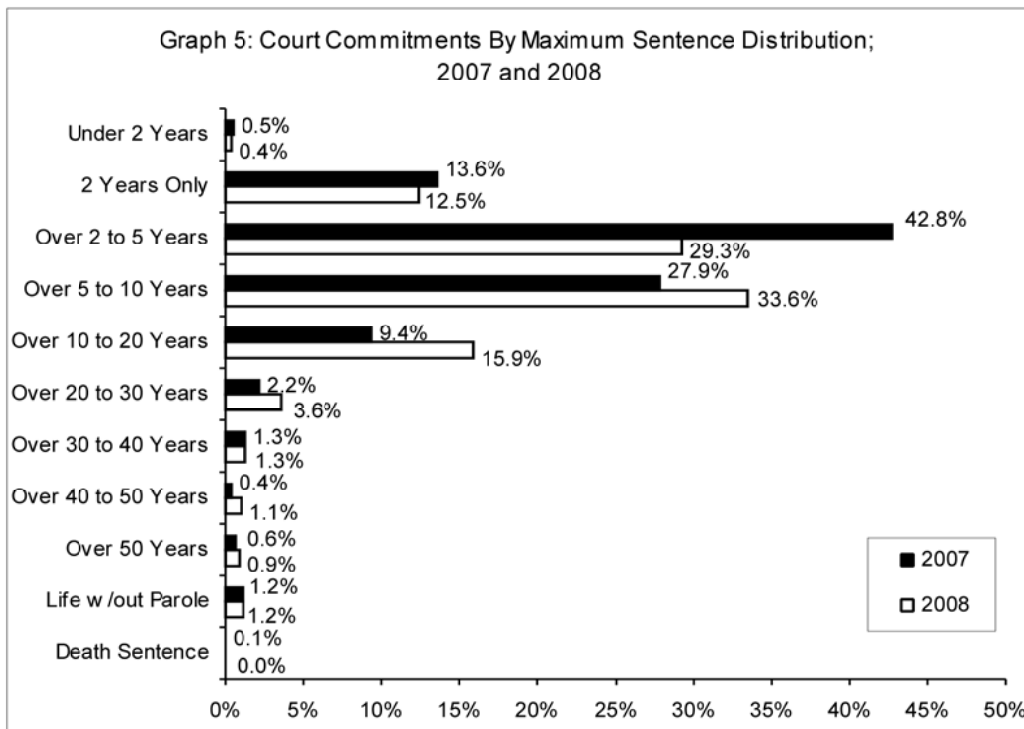


Table 10: Court Commitments by Maximum Sentence and Offender Gender in 2008

Maximum Sentence	Male		Female		Total	
	Number	%	Number	%	Number	%
Under 2 Years	16	0.1%	32	3.8%	48	0.4%
2 Years Only	1,182	13.3%	162	15.8%	1,344	12.5%
Over 2 to 5 Years	2,828	41.8%	331	52.6%	3,159	29.3%
Over 5 to 10 Years	3,354	28.6%	265	20.3%	3,619	33.6%
Over 10 to 20 Years	1,628	9.8%	82	4.8%	1,710	15.9%
Over 20 to 30 Years	372	2.3%	16	1.2%	388	3.6%
Over 30 to 40 Years	125	1.4%	10	0.3%	135	1.3%
Over 40 to 50 Years	111	0.4%	5	0.2%	116	1.1%
Over 50 Years	97	0.6%	4	0.3%	101	0.9%
Life	120	1.3%	9	0.4%	129	1.2%
Death Sentence	5	0.1%	0	0.0%	5	0.0%
Not Reported as of Year End	29	0.2%	0	0.1%	29	0.3%
Total	9,867	100.0%	916	100.0%	10,783	100.0%

Note: Totals may not equal 100% due to rounding.



Receptions

Table 11: Profile of Offenders Serving a Life Sentence Received from 1998 through 2008

Commmitting County	Calendar Year										
	1998	1999	2000	2001	2002	2003	2004	2005	2006	2007	2008
Philadelphia	50	67	47	51	42	46	58	58	72	42	55
Allegheny	24	13	15	19	14	14	17	19	20	7	24
Other Counties	120	63	54	54	56	61	57	57	54	75	50
Total	194	143	116	124	112	121	132	134	146	124	129
Age	1998	1999	2000	2001	2002	2003	2004	2005	2006	2007	2008
Under 20	10	27	11	6	7	15	7	13	21	12	17
20 To 24	58	40	46	44	36	39	47	41	39	37	29
25 To 29	26	26	22	27	30	23	32	24	32	28	26
30 To 34	20	11	9	13	12	12	14	23	22	14	19
35 To 39	25	22	6	13	7	15	11	11	12	7	10
40 To 44	12	8	10	10	6	6	9	6	7	9	14
45 and Over	43	9	12	11	14	11	12	16	13	17	14
Race	1998	1999	2000	2001	2002	2003	2004	2005	2006	2007	2008
White	99	39	36	35	34	29	37	26	30	43	34
Non-White	95	104	80	89	78	92	95	108	116	81	95
Gender	1998	1999	2000	2001	2002	2003	2004	2005	2006	2007	2008
Male	185	141	107	122	110	116	127	127	140	115	120
Female	9	2	9	2	2	5	5	7	6	9	9
Total	194	143	116	124	112	121	132	134	146	124	129



2008
Annual Statistical Report

Section II

Population



Population

The overall incarceration rate in Pennsylvania was 396 per 100,000 state residents in 2008. Nationally, the incarceration rate of state prisoners was 506 per 100,000 residents for year end 2007 (U.S. Bureau of Justice Statistics).

From 1998 to 2008, the number of inmates incarcerated has increased by 35.5%, from 36,377 to 49,307.

At the end of 2008, the population was comprised of 84.7% sentenced offenders and 14.8% parole violators.

A demographic breakdown of the Department's inmates indicates that offender age, race, and gender have remained relatively constant between 2007 and 2008.

In 2008, the majority of DOC offenders were African Americans (49%), followed by Caucasians (39%), Hispanics (11%), and other races (1%).

As of calendar year-end 2008, the DOC population consisted of 46,538 males and 2,769 females.

In 2008, the average minimum sentence length for Part One Offenders was 8.6 years and the average maximum sentence length was 19.2 years. For Part Two Offenders, the average minimum sentence length was 4.3 years and the average maximum sentence length was 9.9 years.

The number of inmates serving a minimum sentence of more than 20 years (excluding inmates serving life sentences and capital cases) increased by 8.0% from 1,531 in 2007 to 1,654 in 2008.

The following are characteristics of offenders serving life sentences in the Department:

The number of offenders serving a life sentence increased by 2.8%, from 4,451 in 2007 to 4,574 in 2008.

The average age of inmates serving life sentences in 2008 was 44 years. The average age of inmates serving life sentences remains higher than the average for the total population.

Table 12: Rank Order of Ten Counties with Highest State Incarceration Rate for 2007 and 2008*

Ranking	County	Incarceration Rate for 2007	Incarceration Rate for 2008	Percent Change
1	Philadelphia County	1030.8	1056.0	2.4%
2	Dauphin County	750.5	832.2	10.9%
3	Venango County	662.9	670.7	1.2%
4	Lebanon County	462.9	560.0	21.0%
5	Erie County	511.7	535.1	4.6%
6	Lycoming County	479.4	521.1	8.7%
7	Fayette County	457.3	500.3	9.4%
8	Jefferson County	392.2	487.8	24.4%
9	Clearfield County	435.8	487.4	11.8%
10	Fulton County	468.6	468.7	0.0%

* Ranking by 2008 incarceration rate per 100,000 residents. Note: incarceration rate calculations are based on the number of offenders incarcerated in the state prison system for each committing county. This rate does not include county or federal inmates.

* Data based on estimated population and Census data provided by the Pennsylvania State Data Center.

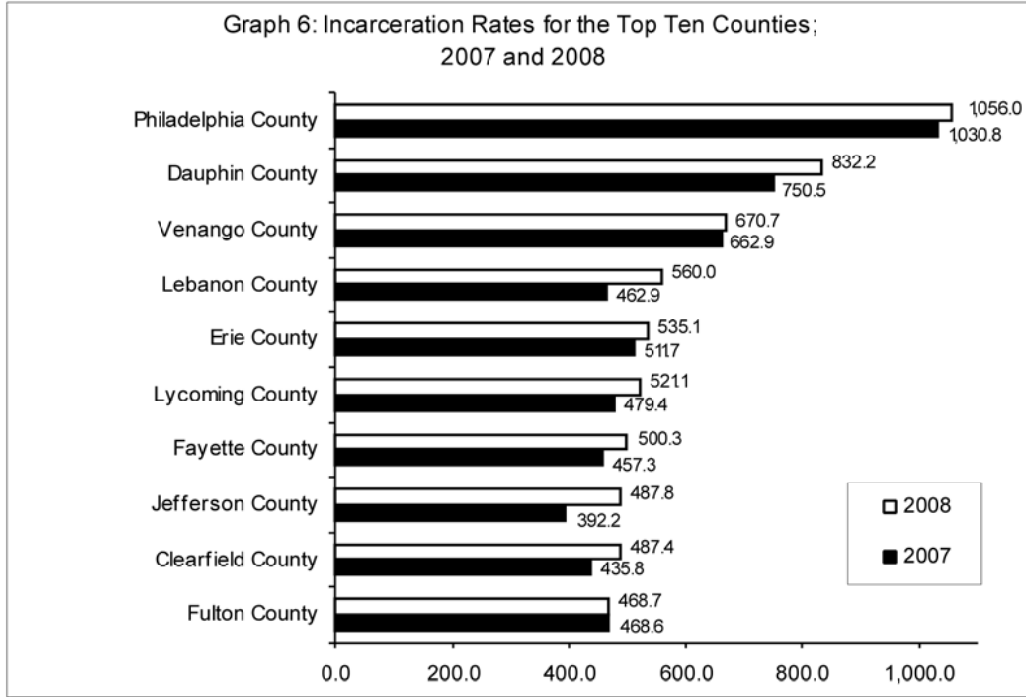


Table 13: Inmate Population by County and Gender on December 31; Calendar Years 2007 and 2008

County	December 31, 2007				December 31, 2008			
	Male	Female	Total	% of Total	Male	Female	Total	% of Total
Adams	252	18	270	0.6%	292	25	317	0.6%
Allegheny	3,418	134	3,552	7.7%	3,626	133	3,759	7.6%
Armstrong	93	9	102	0.2%	100	13	113	0.2%
Beaver	292	25	317	0.7%	312	24	336	0.7%
Bedford	103	11	114	0.2%	120	13	133	0.3%
Berks	1,624	120	1,744	3.8%	1,710	133	1,843	3.7%
Blair	352	56	408	0.9%	427	72	499	1.0%
Bradford	181	15	196	0.4%	197	19	216	0.4%
Bucks	860	34	894	1.9%	1,026	56	1,082	2.2%
Butler	309	35	344	0.7%	363	35	398	0.8%
Cambria	233	13	246	0.5%	232	12	244	0.5%
Cameron	14		14	0.0%	21	3	24	0.0%
Carbon	84	6	90	0.2%	99	9	108	0.2%
Centre	204	14	218	0.5%	208	19	227	0.5%
Chester	1,034	50	1,084	2.4%	1,051	49	1,100	2.2%
Clarion	97	7	104	0.2%	108	7	115	0.2%
Clearfield	315	40	355	0.8%	363	41	404	0.8%
Clinton	73	9	82	0.2%	82	14	96	0.2%
Columbia	95	5	100	0.2%	99	10	109	0.2%
Crawford	265	29	294	0.6%	272	34	306	0.6%
Cumberland	308	24	332	0.7%	331	31	362	0.7%
Dauphin	1,781	138	1,919	4.2%	1,983	152	2,135	4.3%
Delaware	1,582	71	1,653	3.6%	1,747	85	1,832	3.7%
Elk	50	2	52	0.1%	54	1	55	0.1%
Erie	1,337	91	1,428	3.1%	1,396	98	1,494	3.0%
Fayette	593	68	661	1.4%	636	84	720	1.5%
Forest	29	1	30	0.1%	21	1	22	0.0%
Franklin	423	27	450	1.0%	476	38	514	1.0%
Fulton	64	6	70	0.2%	66	4	70	0.1%
Greene	95	7	102	0.2%	106	6	112	0.2%
Huntingdon	50	8	58	0.1%	78	12	90	0.2%
Indiana	146	5	151	0.3%	151	11	162	0.3%
Jefferson	161	16	177	0.4%	198	22	220	0.4%
Juniata	43	2	45	0.1%	52	3	55	0.1%
Lackawanna	732	80	812	1.8%	839	94	933	1.9%
Lancaster	1,252	75	1,327	2.9%	1,351	80	1,431	2.9%
Lawrence	250	26	276	0.6%	268	24	292	0.6%
Lebanon	553	39	592	1.3%	669	53	722	1.5%
Lehigh	1,103	61	1,164	2.5%	1,205	68	1,273	2.6%
Luzerne	734	59	793	1.7%	791	65	856	1.7%
Lycoming	500	60	560	1.2%	554	54	608	1.2%
Mckean	106	9	115	0.2%	113	10	123	0.2%
Mercer	310	25	335	0.7%	318	25	343	0.7%
Mifflin	110	7	117	0.3%	127	9	136	0.3%
Monroe	258	24	282	0.6%	300	31	331	0.7%
Montgomery	1,298	73	1,371	3.0%	1,407	91	1,498	3.0%
Montour	42	6	48	0.1%	52	7	59	0.1%
Northampton	664	46	710	1.5%	715	53	768	1.6%
Northumberland	265	34	299	0.6%	232	38	270	0.5%
Perry	105	11	116	0.3%	129	16	145	0.3%
Philadelphia	14,505	438	14,943	32.5%	14,846	439	15,285	31.0%
Pike	88	5	93	0.2%	106	5	111	0.2%
Potter	39	2	41	0.1%	46		46	0.1%
Schuylkill	269	29	298	0.6%	333	36	369	0.7%
Snyder	137	10	147	0.3%	146	11	157	0.3%
Somerset	160	13	173	0.4%	138	8	146	0.3%
Sullivan	14		14	0.0%	12		12	0.0%
Susquehanna	76	2	78	0.2%	77	3	80	0.2%
Tioga	70	2	72	0.2%	80	5	85	0.2%
Union	134	12	146	0.3%	137	10	147	0.3%
Venango	325	38	363	0.8%	328	37	365	0.7%
Warren	119	17	136	0.3%	137	25	162	0.3%
Washington	306	20	326	0.7%	374	34	408	0.8%
Wayne	157	12	169	0.4%	181	17	198	0.4%
Westmoreland	532	39	571	1.2%	580	47	627	1.3%
Wyoming	74	6	80	0.2%	77	5	82	0.2%
York	1,642	89	1,731	3.8%	1,781	92	1,873	3.8%
Unknown/ Other	67	7	74	0.2%	86	8	94	0.2%
Total	43,556	2,472	46,028	100.0%	46,538	2,769	49,307	100.0%

Note: Totals may not equal 100% due to rounding.

Table 14: Rank-Ordered Comparison of Civilian Population and State Incarceration Rates for 2007 and 2008

County	2007			2008		
	Civilian Population*	Rate per 100,000	Rank	Civilian Population*	Rate per 100,000	Rank
Philadelphia	1,449,634	1030.8	1	1,447,395	1056.0	1
Dauphin	255,710	750.5	2	256,562	832.2	2
Venango	54,763	662.9	3	54,423	670.7	3
Lebanon	127,889	462.9	7	128,934	560.0	4
Erie	279,092	511.7	4	279,175	535.1	5
Lycoming	116,811	479.4	5	116,670	521.1	6
Fayette	144,556	457.3	8	143,925	500.3	7
Jefferson	45,135	392.2	13	45,105	487.8	8
Clearfield	81,452	435.8	9	82,896	487.4	9
Fulton	14,939	468.6	6	14,935	468.7	10
Berks	401,955	433.9	10	403,595	456.6	11
Cameron	5,349	261.7	34	5,266	455.8	12
Lackawanna	209,330	387.9	14	209,408	445.5	13
York	421,049	411.1	12	424,583	441.1	14
Snyder	38,113	385.7	15	38,074	412.4	15
Blair	125,527	325.0	22	125,174	398.6	16
Warren	40,986	331.8	18	40,728	397.8	17
Wayne	51,708	326.8	21	52,016	380.7	18
Lehigh	337,343	345.0	16	339,989	374.4	19
Franklin	141,665	317.7	24	143,495	358.2	20
Bradford	61,471	318.8	23	61,233	352.8	21
Crawford	88,663	331.6	19	88,411	346.1	22
Union	43,724	333.9	17	43,640	336.8	23
Montour	17,817	269.4	30	17,705	333.2	24
Delaware	554,399	298.2	26	553,619	330.9	25
Lawrence	90,991	303.3	25	90,272	323.5	26
Forest	6,955	431.3	11	6,825	322.3	27
Perry	45,163	256.8	37	45,185	320.9	28
Adams	100,779	267.9	31	101,119	313.5	29
Allegheny	1,219,210	291.3	27	1,215,103	309.4	30
Northumberland	91,003	328.6	20	91,091	296.4	31
Wyoming	27,835	287.4	28	27,759	295.4	32
Mifflin	46,941	249.2	39	46,062	295.3	33
Mercer	116,809	286.8	29	116,652	294.0	34
Clarion	40,028	259.8	35	39,989	287.6	35
Lancaster	498,465	266.2	32	502,370	284.8	36
Greene	39,503	258.2	36	39,344	284.7	37
McKean	43,633	263.6	33	43,537	282.5	38
Potter	16,987	241.4	41	16,720	275.1	39
Luzerne	312,265	254.0	38	311,983	274.4	40
Bedford	49,650	229.6	42	49,727	267.5	41
Northampton	293,522	241.9	40	294,787	260.5	42
Clinton	37,213	220.4	46	37,038	259.2	43
Schuylkill	147,269	202.4	47	147,254	250.6	44
Juniata	23,168	194.2	48	23,146	237.6	45
Chester	486,345	222.9	44	491,489	223.8	46
Butler	181,934	189.1	50	182,902	217.6	47
Tioga	40,681	177.0	52	40,574	209.5	48
Monroe	164,722	171.2	55	165,058	200.5	49
Washington	205,553	158.6	59	206,407	197.7	50
Huntingdon	45,556	127.3	67	45,543	197.6	51
Sullivan	6,200	225.8	43	6,124	196.0	52
Susquehanna	41,123	189.7	49	40,831	195.9	53
Beaver	173,074	183.2	51	172,476	194.8	54
Montgomery	776,172	176.6	53	778,048	192.5	55
Somerset	77,861	222.2	45	77,454	188.5	56
Pike	58,633	158.6	58	59,664	186.0	57
Indiana	87,690	172.2	54	87,479	185.2	58
Bucks	621,144	143.9	65	621,643	174.1	59
Westmoreland	362,326	157.6	60	361,589	173.4	60
Elk	32,610	159.5	57	32,268	170.4	61
Carbon	63,242	142.3	66	63,558	169.9	62
Cambria	144,995	169.7	56	144,319	169.1	63
Columbia	64,726	154.5	61	65,004	167.7	64
Armstrong	69,059	147.7	63	68,790	164.3	65
Cumberland	228,019	145.6	64	229,361	157.8	66
Centre	144,658	150.7	62	144,779	156.8	67
Total	12,432,792	370.2		12,448,279	396.1	

* Data based on estimated population provided by the Pennsylvania State Data Center.

Table 15: Inmate Population Versus State Institutional Capacity From 1998 through 2008

Year	Number of Inmates	Multiple Occupancy Capacity	Percent of Capacity
1998	36,377	30,992	117.4%
1999	36,457	32,384	112.4%
2000	36,802	33,180	110.9%
2001	38,067	33,757	112.2%
2002	40,172	34,583	115.7%
2003	40,850	34,240	118.9%
2004	41,000	37,570	108.8%
2005	42,486	38,357	110.5%
2006	44,450	38,547	114.9%
2007	46,028	41,692	110.2%
2008	49,307	43,298	113.7%

Notes: The 2001-2004 percent of capacity does not include the Forensic Psychiatric Unit population at SCI Waymart. As of May 31, 2004, the Department began reporting "Operational Bed Capacity", which represents the optimal number of inmates that each facility can house based on a number of factors. In addition to cell size and security level, "Operational Bed Capacity" takes into consideration availability of inmate employment or programming, support services, and facility infrastructure. Prior capacity ratings were based solely on the physical characteristics of the cells (i.e., cell size and security level). This is not a change in how the Department operates. It is rather a change in how the Department assesses capacity with respect to quality of life and safety for both staff and inmates.

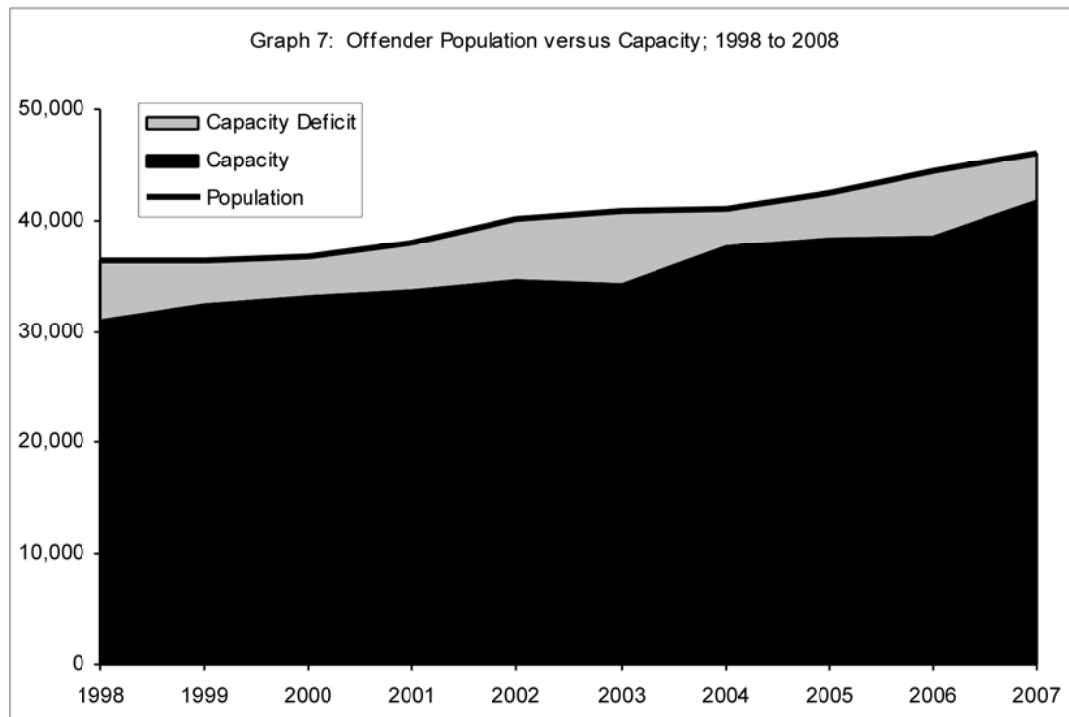
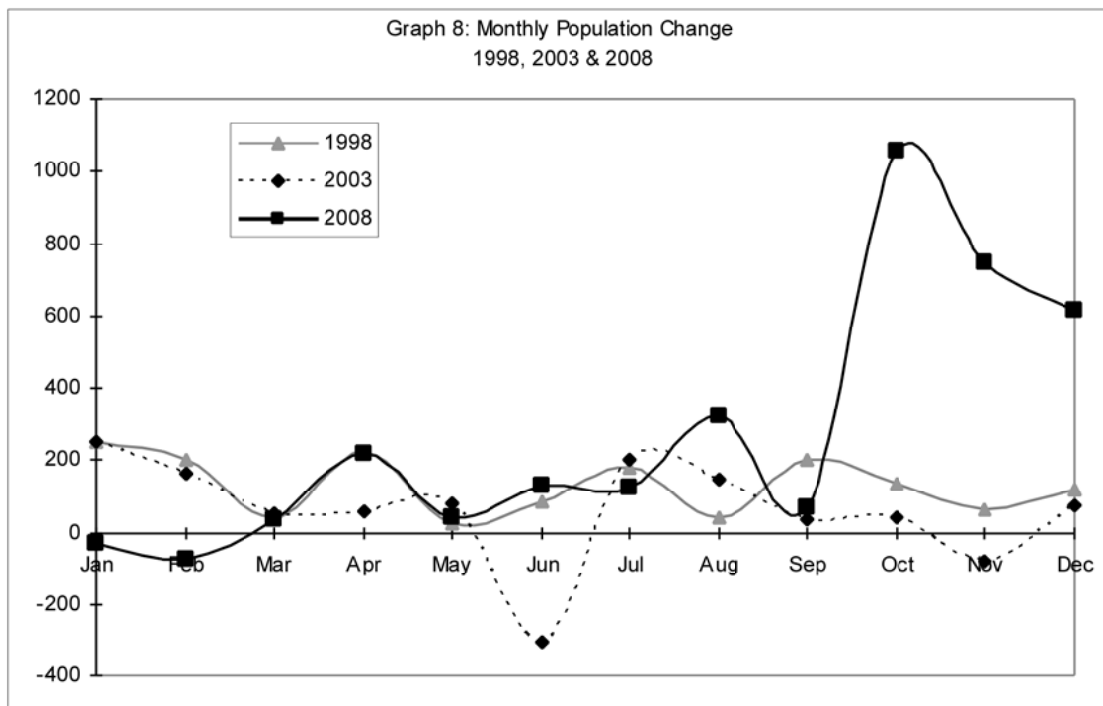


Table 16: Month-End Population 1998 through December 2008

Month	1998	1999	2000	2001	2002	2003	2004	2005	2006	2007	2008
January	35,075	36,485	36,426	36,799	38,195	40,394	40,836	40,948	42,544	44,625	46,019
February	35,275	36,598	36,471	36,760	38,397	40,556	40,809	41,012	42,565	44,753	45,944
March	35,316	36,627	36,613	36,961	38,660	40,606	40,873	41,134	42,812	45,177	45,981
April	35,537	36,603	36,452	36,829	38,734	40,662	40,901	41,347	42,773	45,201	46,198
May	35,561	36,527	36,462	37,020	39,074	40,744	40,822	41,484	42,909	45,505	46,241
June	35,644	36,511	36,563	37,081	39,136	40,437	40,697	41,582	43,206	45,484	46,369
July	35,821	36,520	36,611	37,166	39,283	40,639	40,627	41,700	43,244	45,625	46,492
August	35,863	36,523	36,686	37,299	39,268	40,783	40,524	41,910	43,596	45,588	46,816
September	36,065	36,467	36,783	37,407	39,295	40,818	40,633	42,073	43,823	45,703	46,883
October	36,198	36,531	36,703	37,500	39,571	40,859	40,726	41,992	43,878	45,935	47,942
November	36,260	36,382	36,714	37,754	39,776	40,777	40,674	42,307	43,887	45,922	48,691
December	36,377	36,457	36,802	38,067	40,172	40,850	41,000	42,486	44,450	46,028	49,307

*

* In response to the series of violent crimes committed by parolees during 2008, a parole moratorium went into effect on September 29, 2008. On December 1, the moratorium was lifted, and parole resumed for all eligible offenders, although at a much lower rate than prior to the moratorium.



Population

Table 17: Inmate Population by Facility, Race, Gender, and Age on December 31, 2007

Facility	Race				Gender		Age			Total
	White	Black	Hispanic	Other	Male	Female	Under 25	25 - 39	40 and Over	
Albion	1,030	1,051	197	17	2,295	0	225	1,234	836	2,295
Cambridge Springs	594	334	77	21	0	1,026	90	509	427	1,026
Camp Hill	1,346	1,545	476	13	3,380	0	879	1,434	1,017	3,380
Chester	336	647	174	6	1,163	0	205	639	319	1,163
Coal Township	703	925	226	10	1,864	0	328	908	628	1,864
Cresson	816	584	168	3	1,571	0	172	744	655	1,571
Dallas	673	1,163	242	12	2,090	0	159	919	1,012	2,090
Fayette	613	1,188	220	15	2,036	0	270	985	781	2,036
Forest	597	1,201	264	10	2,072	0	512	1,028	532	2,072
Frackville	410	555	131	10	1,106	0	121	570	415	1,106
Graterford	713	1,846	310	29	2,898	0	214	1,273	1,411	2,898
Greene	556	1,176	173	12	1,917	0	186	1,050	681	1,917
Greensburg	406	468	100	5	979	0	124	504	351	979
Houtzdale	832	1,187	265	9	2,293	0	724	879	690	2,293
Huntingdon	628	1,303	241	12	2,184	0	104	1,143	937	2,184
Laurel Highlands	586	339	82	8	1,015	0	39	292	684	1,015
Mahanoy	737	1,279	262	12	2,290	0	265	1,223	802	2,290
Mercer	768	428	99	15	1,310	0	77	472	761	1,310
Muncy	648	441	101	18	0	1,208	165	542	501	1,208
Pine Grove	176	428	94	5	703	0	529	121	53	703
Pittsburgh	325	416	55	3	799	0	97	446	256	799
Quehanna Bootcamp	174	227	53	1	409	46	158	239	58	455
Retreat	356	419	109	5	889	0	122	450	317	889
Rockview	953	907	239	10	2,109	0	186	1,041	882	2,109
Smithfield	396	663	155	11	1,225	0	141	699	385	1,225
Somerset	837	1,187	267	23	2,314	0	398	1,183	733	2,314
Waymart	742	375	152	9	1,278	0	34	399	845	1,278
C C Cs	271	206	49	0	473	53	60	275	191	526
Group Homes	367	530	120	5	883	139	112	560	350	1,022
Federal	5	6	0	0	11	0	0	4	7	11
% of Total	38.2%	50.0%	11.1%	0.7%	94.6%	5.4%	14.5%	47.4%	38.1%	100.0%
Total	17,594	23,024	5,101	309	43,556	2,472	6,696	21,815	17,517	46,028

Table 18: Inmate Population by Facility, Race, Gender, and Age on December 31, 2008

Facility	Race				Gender		Age			Total
	White	Black	Hispanic	Other	Male	Female	Under 25	25 - 39	40 and Over	
Albion	1,068	1,102	204	18	2,392	0	233	1,247	912	2,392
Cambridge Springs	1,470	1,598	578	19	3,665	0	856	1,672	1,137	3,665
Camp Hill	630	324	72	17	0	1,043	80	501	462	1,043
Chester	456	632	171	6	1,265	0	181	697	387	1,265
Coal Township	788	1,048	267	11	2,114	0	420	978	716	2,114
Cresson	803	624	169	5	1,601	0	175	742	684	1,601
Dallas	687	1,159	253	13	2,112	0	173	946	993	2,112
Fayette	417	554	146	8	1,125	0	98	591	436	1,125
Forest	640	1,286	315	11	2,252	0	548	1,135	569	2,252
Frackville	644	1,186	204	15	2,049	0	261	991	797	2,049
Graterford	954	2,046	349	24	3,373	0	260	1,506	1,607	3,373
Greene	393	520	105	4	1,022	0	141	518	363	1,022
Greensburg	588	1,098	195	14	1,895	0	199	1,009	687	1,895
Houtzdale	847	1,146	262	12	2,267	0	618	946	703	2,267
Huntingdon	616	1,286	246	13	2,161	0	108	1,110	943	2,161
Laurel Highlands	690	397	86	8	1,181	0	55	363	763	1,181
Mahanoy	712	1,357	292	14	2,375	0	259	1,263	853	2,375
Mercer	828	477	102	12	1,419	0	117	553	749	1,419
Muncy	793	514	108	28	0	1,443	206	690	557	1,443
Pine Grove	738	816	127	7	1,688	0	191	939	558	1,688
Pittsburgh	199	559	104	2	864	0	641	150	73	864
Quehanna Bootcamp	184	161	52	2	346	53	158	199	42	399
Retreat	453	566	156	5	1,180	0	194	536	400	1,180
Rockview	951	909	227	12	2,099	0	194	1,003	902	2,099
Smithfield	330	745	148	8	1,231	0	150	639	392	1,231
Somerset	807	1,254	276	21	2,358	0	420	1,203	735	2,358
Waymart	859	398	129	9	1,395	0	69	427	899	1,395
C C Cs	298	164	48	1	462	49	60	245	206	511
Group Homes	294	421	96	8	638	181	84	444	291	819
Federal	3	6	0	0	9	0	1	3	5	9
% of Total	38.8%	49.4%	11.1%	0.7%	94.4%	5.6%	14.5%	47.3%	38.2%	100.0%
Total	19,140	24,353	5,487	327	46,538	2,769	7,150	23,336	18,821	49,307

* Community Corrections Centers

Table 19: Uniform Crime Report Offense Groupings by Inmate Race and Gender as of December 31, 2008

	Race						Gender		Total	
	White	Black	Hispanic	Asian	Indian	Other	Male	Female	Number	Percent
Part I Offenses										
Murder										
1st Degree	904	1,941	258	23	11	7	3,014	130	3,144	6.4%
2nd Degree	230	745	87	10	2	0	1,041	33	1,074	2.2%
3rd Degree	488	1,089	218	14	3	7	1,683	136	1,819	3.7%
Unspecified	281	658	114	9	0	1	1,046	17	1,063	2.2%
Voluntary Manslaughter	47	125	24		1	3	187	13	200	0.4%
Involuntary Manslaughter	37	17	2	1	0	0	45	12	57	0.1%
Homicide by Motor Vehicle	189	32	19	1	0	0	204	37	241	0.5%
Forcible Rape	1,799	1,273	251	5	9	5	3,304	38	3,342	6.6%
Robbery	1,321	2,924	440	24	3	5	4,564	153	4,717	9.6%
Aggravated Assault	1,142	1,996	398	11	8	8	3,353	210	3,563	7.2%
Burglary	1,218	677	145	8	3	4	1,981	74	2,055	4.2%
Theft (Including Motor Vehicle)	1,101	416	90	7	2	2	1,298	320	1,618	3.3%
Arson	177	51	11	0	0	0	219	20	239	0.5%
Total Part I Offenses	8,934	11,944	2,057	113	42	42	21,939	1,193	23,132	45.6%
Part II Offenses										
Other Assaults	180	108	33	0	1	1	298	25	323	0.7%
Fraud	69	27	4	1			71	30	101	0.2%
Receiving Stolen Property	189	129	24	0	0	0	315	27	342	0.7%
Forgery	217	85	7	1	2	2	230	84	314	0.6%
Statutory Rape	453	96	65	0	0	4	605	13	618	1.3%
Other Sex Offenses	1,509	477	175	6	1	2	2,099	71	2,170	4.4%
Narcotic Drug Laws	1,842	5,090	1,801	15	2	21	8,120	651	8,771	17.8%
Weapons	253	1,080	163	3	0	9	1,492	16	1,508	3.1%
DUI	1,104	98	42	0	1	6	1,136	115	1,251	2.5%
Prison Breach	143	118	23	0	1	1	257	29	286	0.6%
Kidnapping	78	116	22	1	1	1	208	11	219	0.4%
Other Part II Offenses	1,526	941	256	5	1	9	2,551	187	2,738	5.6%
Total Part II Offenses	7,563	8,365	2,615	32	10	56	17,382	1,259	18,641	37.8%
Parole Violators	2,497	3,979	799	19	6	7	7,028	279	7,307	14.8%
Detentioners/Other	146	65	16	0	0	0	189	38	227	0.5%
Total DOC	19,140	24,353	5,487	164	58	105	46,538	2,769	49,307	100.0%

Note: Totals based on percentages may be off due to rounding.

Table 20: Status of Inmates on December 31, Calendar Years 1998 through 2008

Status	1998	1999	2000	2001	2002	2003	2004	2005	2006	2007	2008
Sentenced	30,191	30,563	30,683	31,232	32,865	33,613	33,906	34,804	36,946	38,935	41,773
Parole Violators	6,186	5,893	6,118	6,834	7,287	7,235	7,036	7,594	7,420	6,928	7,307
Detentioners	0	0	0	0	3	0	48	88	84	165	227
Unknown	0	1	1	1	17	2	10	0	0	0	0
Total	36,377	36,457	36,802	38,067	40,172	40,850	41,000	42,486	44,450	46,028	49,307
Percent Distribution	1998	1999	2000	2001	2002	2003	2004	2005	2006	2007	2008
Sentenced	83.0%	83.8%	83.4%	82.0%	81.8%	82.3%	82.7%	78.3%	83.1%	84.6%	84.7%
Parole Violators	17.0%	16.2%	16.6%	18.0%	18.1%	17.7%	17.2%	17.1%	16.7%	15.1%	14.8%
Detentioners	0.0%	0.0%	0.0%	0.0%	0.0%	0.0%	0.1%	0.2%	0.2%	0.4%	0.5%
Unknown	0.0%	0.0%	0.0%	0.0%	0.0%	0.0%	0.0%	0.0%	0.0%	0.0%	0.0%
Total	100.0%	100.0%	100.0%	100.0%	100.0%	100.0%	100.0%	100.0%	100.0%	100.0%	100.0%

Note: Totals may not equal 100% due to rounding.

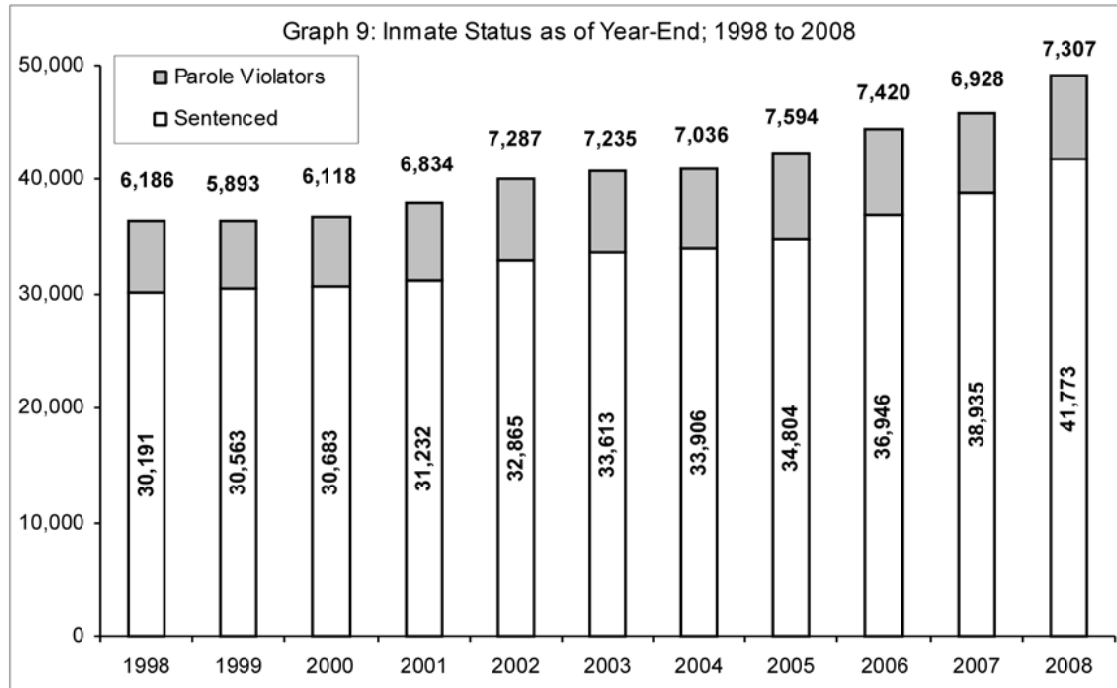


Table 21: Inmates by Primary Offense on December 31; Calendar Years 2007 and 2008 with 2008 Average Sentence Length

Part I Offenses	2008		December 31, 2008		December 31, 2007	
	*Average Minimum (Years)	* Average Maximum (Years)	Number	% of Total	Number	% of Total
Murder						
1st Degree	Life or Death	Life or Death	3,144	6.4%	3,045	6.6%
2nd Degree	Life	Life	1,074	2.2%	1,052	2.3%
3rd Degree	16.6	35.5	1,819	3.7%	1,719	3.7%
Unspecified	16.8	35.6	1,063	2.2%	1,095	2.4%
Voluntary Manslaughter	8.2	17.7	200	0.4%	192	0.4%
Involuntary Manslaughter	3.6	7.9	57	0.1%	58	0.1%
Homicide by Motor Vehicle	4.6	10.8	241	0.5%	222	0.5%
Forcible Rape	12.6	28.7	3,342	6.8%	3,380	7.4%
Robbery	7.8	17.2	4,717	9.6%	4,659	10.1%
Aggravated Assault	7.3	16.3	3,563	7.2%	3,363	7.3%
Burglary	5.2	12.3	2,055	4.2%	1,956	4.3%
Theft (Including Motor Vehicle)	2.0	5.1	1,618	3.3%	1,381	3.0%
Arson	6.4	15.9	239	0.5%	240	0.5%
Total Part I Offenses	9.3	20.7	23,132	46.9%	22,362	48.7%
Part II Offenses	2008		December 31, 2008		December 31, 2007	
	*Average Minimum (Years)	* Average Maximum (Years)	Number	% of Total	Number	% of Total
Other Assaults	2.0	4.7	323	0.7%	274	0.6%
Fraud	1.9	5.4	101	0.2%	80	0.2%
Stolen Property	2.7	6.4	342	0.7%	313	0.7%
Forgery	2.5	6.7	314	0.6%	268	0.6%
Statutory Rape	9.9	22.8	618	1.3%	438	1.0%
Other Sex Offenses	4.3	10.6	2,170	4.4%	1,903	4.1%
Narcotic Drug Offenses	3.3	7.2	8,771	17.8%	7,917	17.2%
Weapons	3.3	7.2	1,508	3.1%	1,117	2.4%
DUI	1.6	4.1	1,251	2.5%	996	2.2%
Prison Breach	2.0	4.8	286	0.6%	241	0.5%
Kidnapping	13.0	28.9	219	0.4%	208	0.5%
Other Part II Offenses	5.1	11.6	2,738	5.6%	2,716	5.9%
Total Part II Offenses	308.0	808.0	18,641	37.8%	16,471	35.9%
Total Part I and II Offenses	6.3	14.1	41,773	84.7%	38,833	84.6%
Parole Violators	3.9	10.5	7,307	14.8%	6,928	15.1%
Detentioners/Other			227	0.5%	165	0.4%
Total DOC			49,307	100.0%	45,926	100.0%

* Average sentence length excludes lifers.

Note: Totals based on percentages may be off due to rounding.

Table 22: Demographic Profile of Inmates on December 31; Calendar Years 2007 and 2008

Item	December 31, 2007		December 31, 2008	
	Number	Percent	Number	Percent
Age				
Under 18	55	0.1%	54	0.1%
18-20	1,234	2.7%	1,229	2.5%
21-24	5,407	11.7%	5,867	11.9%
25-29	8,430	18.3%	8,870	18.0%
30-34	7,059	15.3%	7,767	15.8%
35-39	6,326	13.7%	6,699	13.6%
40-44	5,998	13.0%	6,149	12.5%
45-49	4,979	10.8%	5,452	11.1%
50-54	3,144	6.8%	3,518	7.1%
55-59	1,784	3.9%	1,915	3.9%
60-64	940	2.0%	1,027	2.1%
65 and Over	672	1.5%	760	1.5%
Average	37		37	
Race				
Black	23,024	50.2%	24,353	49.4%
White	17,594	38.2%	19,140	38.8%
Hispanic	5,101	11.1%	5,487	11.1%
Other	309	0.7%	327	0.7%
Gender				
Male	43,556	94.6%	46,538	94.4%
Female	2,472	5.4%	2,769	5.6%
Marital Status				
Single	33,610	73.0%	36,153	73.3%
Married	6,804	14.8%	7,096	14.4%
Divorced	3,436	7.5%	3,735	7.6%
Separated	1,439	3.1%	1,541	3.1%
Widowed	465	1.0%	494	1.0%
Unknown	274	0.6%	288	0.6%
Birthplace				
PA	36,560	79.4%	35,380	71.8%
USA Not PA	8,101	17.6%	12,451	25.3%
Foreign Born	1,084	2.4%	1,163	2.4%
Religion				
Protestant	15,195	33.0%	15,781	32.0%
Catholic	7,818	17.0%	8,282	16.8%
Moslem	8,368	18.2%	9,028	18.3%
Jewish	207	0.5%	240	0.5%
Other	6,451	14.0%	7,557	15.3%
No preference	7,989	17.4%	8,419	17.1%
Total	46,028	100.0%	49,307	100.0%

Note: Totals may not equal 100% due to rounding.

Table 23: Long-Term Inmates on December 31, Calendar Years 2007 and 2008

Minimum Sentence	December 31st		Change from 2007 to 2008	
	2007	2008	Number	Percent
Over 10 to 20 Years	4,058	4,293	235	5.8%
Over 20 Years	1,531	1,654	123	8.0%
Lifers	4,451	4,574	123	2.8%
Capital Cases	227	225	-2 *	-0.9%
Total	10,267	10,746	479	4.7%
Percent of Total Population	22.3%	21.8%	-	-

*Reduction is due to deaths by natural causes

Table 24: Number of Inmates by Facility Serving a Life Sentence on December 31; Calendar Years 2007 and 2008

Institution	2007		2008		Percent Change 2007 - 2008
	Number	Percent	Number	Percent	
Albion	195	4.4%	209	4.6%	7.2%
Camp Hill	80	0.5%	75	1.6%	-6.3%
Cambridge Springs	21	1.8%	22	0.5%	4.8%
Chester	31	0.7%	30	0.7%	-3.2%
Coal Township	153	3.4%	161	3.5%	5.2%
Cresson	57	1.3%	68	1.5%	19.3%
Dallas	419	9.4%	433	9.5%	3.3%
Frackville	140	6.8%	136	3.0%	-2.9%
Forest	142	3.2%	162	3.5%	14.1%
Fayette	303	3.1%	288	6.3%	-5.0%
Graterford	726	16.3%	735	16.1%	1.2%
Greensburg	45	8.2%	48	1.0%	6.7%
Greene	367	1.0%	371	8.1%	1.1%
Houtzdale	140	3.1%	145	3.2%	3.6%
Huntingdon	426	9.6%	434	9.5%	1.9%
Laurel Highlands	52	1.2%	53	1.2%	1.9%
Mahanoy	276	6.2%	288	6.3%	4.3%
Mercer	3	0.1%	4	0.1%	33.3%
Muncy	142	3.2%	147	3.2%	3.5%
Pittsburgh	61	0.3%	68	1.5%	11.5%
Pine Grove	13	1.4%	21	0.5%	0.0%
Retreat	59	1.3%	56	1.2%	-5.1%
Rockview	200	4.5%	214	4.7%	7.0%
Smithfield	164	3.7%	162	3.5%	-1.2%
Somerset	223	5.0%	229	5.0%	2.7%
Waymart	10	0.2%	12	0.3%	20.0%
Lewisburg (Federal)	3	0.1%	3	0.1%	0.0%
Total	4,451	100.0%	4,574	100.0%	2.8%

Note: Totals may not equal 100% due to rounding.

Table 25: Ten Highest Counties with Inmates Serving a Life Sentence Calendar Years 2007 and 2008

County	December 31, 2007		December 31, 2008	
	Number	% of Total	Number	% of Total
Philadelphia	2,330	52.3%	2,389	52.2%
Allegheny	444	10.0%	464	10.1%
Delaware	162	3.6%	165	3.6%
Dauphin	127	2.9%	134	2.9%
Montgomery	96	2.2%	101	2.2%
Bucks	97	2.2%	98	2.1%
Lancaster	91	2.0%	97	2.1%
Berks	92	2.1%	95	2.1%
York	85	1.9%	86	1.9%
Chester	68	1.5%	67	1.5%
Erie	66	1.5%	67	1.5%
Lehigh	68	1.5%	67	1.5%
Other Counties	725	16.3%	744	16.3%
Total	4,451	100.0%	4,574	100.0%

Note: Totals may not equal 100% due to rounding.

Table 26: Age of Inmates Serving a Life Sentence on December 31; Calendar Years 2007 and 2008

Age	December 31, 2007			December 31, 2008		
	Number	% of Total	Cumulative %	Number	% of Total	Cumulative %
Under 20	10	0.2%	0.2%	17	0.4%	0.4%
20 to 24	182	4.1%	4.3%	162	3.5%	3.9%
25 to 29	453	10.2%	14.5%	437	9.6%	13.5%
30 to 34	600	13.5%	27.9%	607	13.3%	26.7%
35 to 39	587	13.2%	41.1%	606	13.2%	40.0%
40 to 44	585	13.1%	54.3%	596	13.0%	53.0%
45 to 49	660	14.8%	69.1%	659	14.4%	67.4%
50 to 54	545	12.2%	81.4%	575	12.6%	80.0%
55 to 59	413	9.3%	90.6%	440	9.6%	89.6%
60 to 64	230	5.2%	95.8%	250	5.5%	95.1%
65 and Over	186	4.2%	100.0%	225	4.9%	100.0%
Total	4,451	100.0%		4,574	100.0%	
Average Age	43.1			43.7		

**Table 27 : Time Served by Inmates Serving Life as of December 31;
Calendar Years 2007 and 2008**

Time Served	2007		2008	
	Number	% of Total	Number	% of Total
Under 5 Years	531	11.9%	523	11.4%
5 to 9.9 Years	718	16.1%	730	16.0%
10 to 14.9 Years	864	19.4%	815	17.8%
15 to 19.9 Years	798	17.9%	861	18.8%
20 to 24.9 Years	555	12.5%	567	12.4%
25 to 29.9 Years	482	10.8%	526	11.5%
30 to 34.9 Years	310	7.0%	331	7.2%
35 to 39.9 Years	160	3.6%	168	3.7%
40 Years and over	33	0.7%	53	1.2%
Total	4,451	100.0%	4,574	100.0%
Average(Years)	16.7		17.2	

Note: Totals may not equal 100% due to rounding.

**Table 28: Profile of Inmates Under Death Sentence on December 31;
Calendar Years 2007 and 2008**

Category	December 31, 2007		December 31, 2008	
	Number	% of Total	Number	% of Total
County				
PHILADELPHIA	119	52.4%	114	50.7%
BERKS	11	4.8%	12	5.3%
ALLEGHENY	9	4.0%	10	4.4%
LEHIGH	8	3.5%	8	3.6%
YORK	7	3.1%	7	3.1%
BUCKS	4	1.8%	5	2.2%
CUMBERLAND	5	2.2%	5	2.2%
DAUPHIN	5	2.2%	4	1.8%
FAYETTE	4	1.8%	4	1.8%
LANCASTER	4	1.8%	4	1.8%
MONTGOMERY	4	1.8%	4	1.8%
Other Counties	47	20.7%	48	21.3%
Age				
18 - 24	1	0.4%	1	0.4%
25 - 29	15	6.6%	16	7.1%
30 - 34	20	8.8%	18	8.0%
35 - 39	40	17.6%	34	15.1%
40 - 44	49	21.6%	43	19.1%
45 - 49	42	18.5%	44	19.6%
50 - 54	23	10.1%	32	14.2%
55 and Over	37	16.3%	37	16.4%
Average	44		44	
Race				
White	73	32.2%	72	32.0%
Black	134	59.0%	133	59.1%
Hispanic	18	7.9%	18	8.0%
Other	2	0.9%	2	0.9%
Gender				
Male	222	97.8%	220	97.8%
Female	5	2.2%	5	2.2%
Total	227	100.0%	225	100.0%

Note: Totals may not equal 100% due to rounding.

Commonwealth of Pennsylvania
Department of Corrections



2008
Annual Statistical Report

Section III

Releases



Releases

The type of releases from the Department changed only slightly between 2007 and 2008.

The number of unconditional releases (i.e., expiration of maximum sentence, executions, and court orders) represented 19.4% of total releases in 2007 and 22.0% in 2008.

The number of conditional releases (i.e., state paroles, county paroles, and reparoles) represented 66.9% of the total releases in 2007 and decreased to 59.5% in 2008. This decrease is primarily due to the parole moratorium that went into effect on September 29, 2008. On December 1, the moratorium was lifted, and parole resumed for all eligible offenders, although at a much lower rate than prior to the moratorium.

Overall, the average time served for inmates released in 2008 for Part One and Part Two Offenses was 52.1 months. The average time served for Part One Offenders released was 66.9 months and the average time served for Part Two Offenders released was 39.1 months in 2008.

Table 29: Average Time Served by offense for Inmates Released During 2008

Part I Offenses	12/31/08 Number	Average Time Served (Months)	Average Time Served (Years)	% of Total
Murder				
1st Degree	9	131.0	10.9	0.1%
2nd Degree	2	434.0	36.1	0.0%
3rd Degree	153	185.8	15.5	1.0%
Unspecified	57	141.9	11.8	0.4%
Voluntary Manslaughter	29	47.2	3.9	0.2%
Involuntary Manslaughter	30	103.2	8.6	0.2%
Homicide by Motor Vehicle	54	44.3	3.7	0.3%
Forcible Rape	147	160.8	13.4	0.9%
Robbery	1,251	80.1	6.7	7.9%
Aggravated Assault	899	73.4	6.1	5.7%
Burglary	762	56.6	4.7	4.8%
Theft (Including Motor Vehicle)	831	31.4	2.6	5.3%
Arson	71	83.3	6.9	0.5%
Total Part I Offenses	4,295	89.7	7.5	27.2%
Part II Offenses	12/31/08 Number	Average Time Served (Months)	Average Time Served (Years)	% of Total
Other Assaults	149	27.6	2.3	0.9%
Fraud	35	21.1	1.8	0.2%
Stolen Property	193	40.1	3.3	1.2%
Forgery	156	39.0	3.2	1.0%
Statutory Rape	14	120.0	10.0	0.1%
Other Sex Offenses	492	56.7	4.7	3.1%
Narcotic Drug Offenses	3,664	37.9	3.2	23.2%
Weapons	430	33.9	2.8	2.7%
DUI	632	22.8	1.9	4.0%
Prison Breach	167	33.0	2.7	1.1%
Kidnapping	28	139.8	11.6	0.2%
Other Part II Offenses	1,406	41.4	3.4	8.9%
Total Part II Offenses	7,366	42.4	3.5	46.7%
Total Part I and II Offenses	11,661	52.1	4.3	73.9%
Parole Violators	2,125			13.5%
Other/In Processing	1,990			12.6%
Total DOC	15,776			100.0%

Notes:

- 1) Calculation of average time served does not include non-recommit actions or reparoles.
- 2) Totals may not equal 100% due to rounding.
- 3) 1st & 2nd degree murder releases only include inmate deaths and vacated sentences.

Table 30: Inmate Releases by Type for Calendar Years 2007 and 2008

Type of Release	2007		2008	
	Number	Percent	Number	Percent
Unconditional				
Maxed Out*	3,078	18.9%	3,412	21.6%
By Court Order	82	0.5%	60	0.4%
Total	3,160	19.4%	3,472	22.0%
Conditional				
State Parole	7,622	44.6%	7,230	45.8%
County Parole	27	0.1%	25	0.2%
Reparoled (State)	3,546	22.2%	2,125	13.5%
Total	11,195	66.9%	9,380	59.5%
Other Releases				
Deaths	150	0.8%	151	1.0%
Other**	2,324	12.9%	2,773	17.6%
Total	2,474	13.7%	2,924	18.5%
Total Releases	16,829	100.0%	15,776	100.0%

* Expiration of maximum sentence.

** Other includes transfers to state hospitals and other jurisdictions, and released detentioners.

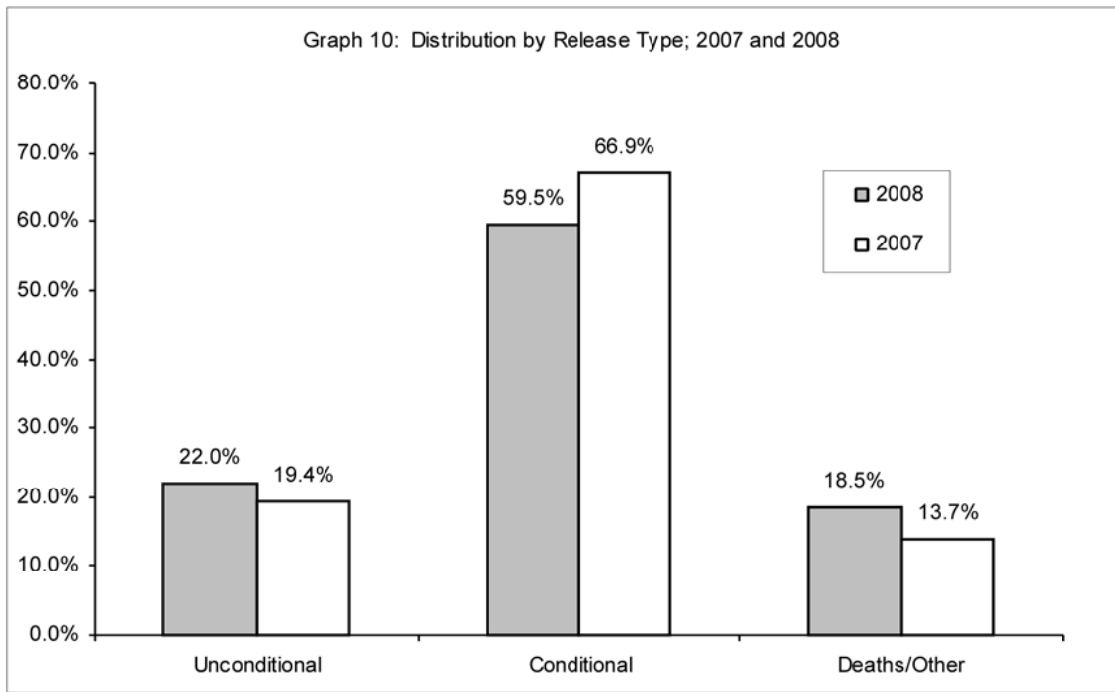


Table 31: Average Months Served by Inmates Initially Released in Calendar Years 1998 through 2008

Year Released	Maximum Sentence Under 2 Years		Maximum Sentence 2 Years and Over		All Sentences	
	Number Released	Average Time Served (Months)	Number Released	Average Time Served (Months)	Number Released	Average Time Served (Months)
1998	35	18.6	5,537	54.9	5,572	54.6
1999	18	13.4	4,685	52.6	4,703	59.5
2000	35	13.1	7,073	50.3	7,108	50.1
2001	28	9.8	6,841	48.6	6,869	48.4
2002	29	13.8	6,809	48.8	6,838	48.4
2003	30	12.8	7,962	47.3	7,992	47.3
2004	30	13.7	9,046	43.2	9,076	43.1
2005	13	14.7	8,748	42.8	8,761	42.7
2006	18	16.8	8,507	43.4	8,525	43.4
2007	49	9.5	10,617	42.4	10,666	42.3
2008	20	10.5	9,159	44.6	9,179	44.6

Note: Initial releases includes first time parolees, deaths, some maxout cases, vacated sentences, and vacated convictions. Initial releases does not include parole violators and some max out cases.

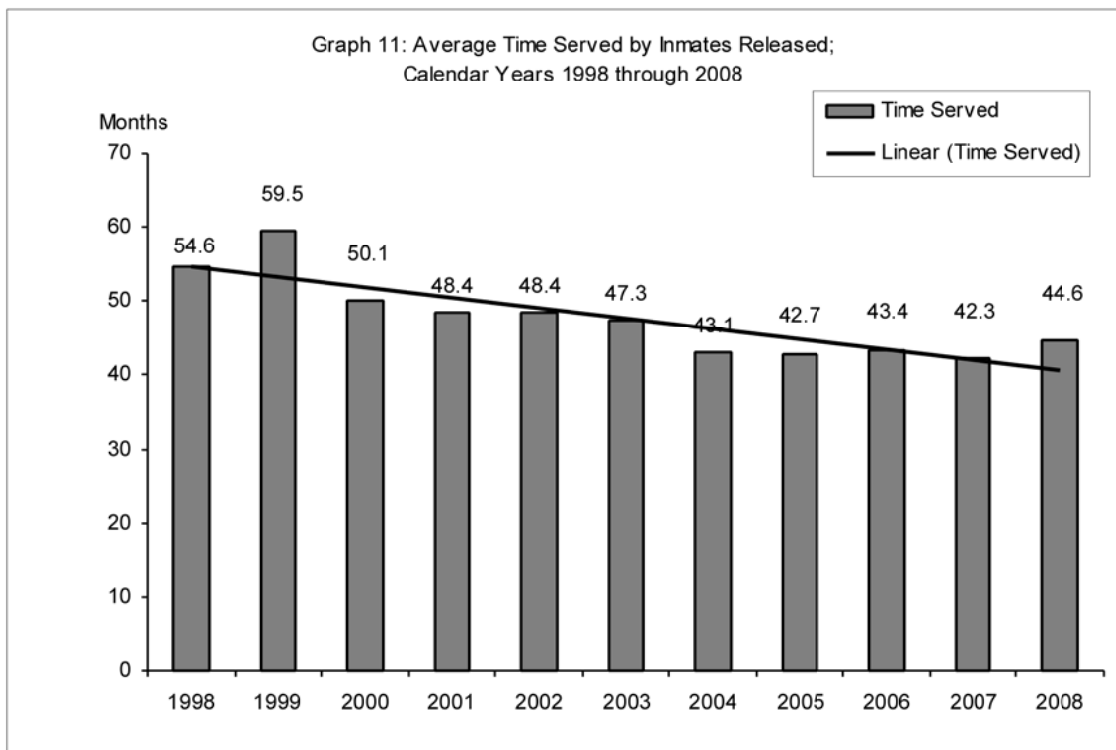


Table 32: Releases by Type for Inmates Serving a Life Sentence; Calendar Years 1998 through 2008

Year Released	Commuted/Other*	Died	Total
1998	0	24	24
1999	0	23	23
2000	0	36	36
2001	0	13	13
2002	0	31	31
2003	0	33	33
2004	2	35	37
2005	2	41	43
2006	5	15	20
2007	3	29	32
2008	1	29	30
Total	13	309	322

* Refers to commuted lifers or those whose Life Sentence was vacated and who were released from the PA DOC.



Section IV

Miscellaneous



Miscellaneous

There were no breach escape from an institution in 2008. There have only been two walk aways from outside the institutions since 1998 and both of them were quickly apprehended.

There were 278 walk aways from community correction centers in 2008.

The Department of Corrections' overall personnel complement consisted of 9,147 security staff and 5,599 other staff positions in 2008.

Table 33: Number of Breach Escapes from 1998 through 2008 by Facility

Institution/Facility	1998	1999	2000	2001	2002	2003	2004	2005	2006	2007	2008
Albion	0	0	0	0	0	0	0	0	0	1	0
Cambridge Springs	0	0	0	0	0	0	0	0	0	0	0
Camp Hill	0	0	0	0	0	0	0	0	0	0	0
Chester	0	0	0	0	0	0	0	0	0	0	0
Coal Township	0	0	0	0	0	0	0	0	0	0	0
Cresson	0	0	0	0	0	0	0	0	0	0	0
Dallas	0	2	0	0	0	0	0	0	0	0	0
Fayette	-	-	-	-	-	0	0	0	0	0	0
Frackville	0	0	0	0	0	0	0	0	0	0	0
Graterford	0	0	0	0	0	0	0	0	0	0	0
Greene	0	0	0	0	0	0	0	0	0	0	0
Greensburg	0	0	0	0	0	0	0	0	0	0	0
Houtzdale	0	0	0	0	0	0	0	0	0	0	0
Huntingdon	0	1	0	0	0	0	0	0	0	0	0
Laurel Highlands	0	0	0	0	0	0	0	0	0	0	0
Mahanoy	0	0	0	0	0	0	0	0	0	0	0
Mercer	0	0	0	0	0	0	0	0	0	0	0
Muncy	0	0	0	0	0	0	0	0	0	0	0
Pittsburgh	0	0	0	0	0	0	0	0	0	0	0
Quehanna	0	0	0	0	0	0	0	0	0	0	0
Retreat	0	0	0	0	0	0	0	0	0	0	0
Rockview	0	0	0	0	0	0	0	0	0	0	0
Somerset	0	0	0	0	0	0	0	0	0	0	0
Smithfield	0	0	0	0	0	0	0	0	0	0	0
Waynesburg	0	0	0	0	0	0	0	0	0	0	0
Waymart	0	0	0	0	0	0	0	0	0	0	0
Total	0	3	0	0	0	0	0	0	0	1	0

Table 34: Number of Walk Aways from 1998 through 2008 by Facility

Institution/Facility	1998	1999	2000	2001	2002	2003	2004	2005	2006	2007	2008
Albion	0	0	0	0	0	0	0	0	0	0	0
Cambridge Springs	0	0	0	0	0	0	0	0	0	0	0
Camp Hill	0	0	0	0	0	0	0	0	0	0	0
Chester	0	0	0	0	0	0	0	0	0	0	0
Coal Township	0	0	0	0	0	0	0	0	0	0	0
Cresson	0	0	0	0	0	0	0	0	0	0	0
Dallas	1	0	0	0	0	0	0	0	0	0	0
Fayette	-	-	-	-	-	0	0	0	0	0	0
Frackville	0	0	0	0	0	0	0	0	0	0	0
Graterford	0	0	0	0	0	0	0	0	0	0	0
Greene	0	0	0	0	0	0	0	0	0	0	0
Greensburg	0	0	0	0	0	0	0	0	0	0	0
Houtzdale	0	0	0	0	0	0	0	1	0	0	0
Huntingdon	0	0	0	0	0	0	0	0	1	0	0
Laurel Highlands	0	0	0	0	0	0	0	0	0	0	0
Mahanoy	0	0	0	0	0	0	0	0	0	0	0
Mercer	0	0	0	0	0	0	0	0	0	0	0
Muncy	0	0	0	0	0	0	0	0	0	0	0
Pittsburgh	0	0	0	0	0	0	0	0	0	0	0
Quehanna	1	0	0	0	0	0	0	0	0	0	0
Retreat	0	0	0	0	0	0	0	0	0	0	0
Rockview	0	0	0	0	0	0	0	0	0	0	0
Somerset	1	0	0	0	0	0	0	0	0	0	0
Smithfield	0	0	0	0	0	0	0	0	0	0	0
Waynesburg	0	0	0	0	0	0	0	0	0	0	0
Waymart	0	0	0	0	0	0	0	0	0	0	0
Sub-Total	3	0	0	0	0	0	0	1	1	0	0
CCCs	69	71	73	161	126	126	109	86	156	278	168
Total	72	71	73	161	126	126	109	87	157	278	168

Note - beginning in 2006, there has been an increase in the number of pre-release inmates.

Table 35: Complement Control by Location as of December 31, 2008

Facility	Other Staff		Other Staff Total	Security Staff		Security Staff Total	Grand Total
	Female	Male		Female	Male		
Albion	104	125	229	17	304	321	550
Cambridge Springs	95	49	144	90	82	172	316
Camp Hill	175	197	372	75	534	609	981
Chester	72	75	147	85	156	241	388
Coal Twp	97	125	222	16	283	299	521
Cresson	78	115	193	16	293	309	502
Dallas	89	147	236	11	433	444	680
Fayette	121	111	232	20	370	390	622
Forest	114	125	239	20	420	440	679
Frackville	57	83	140	13	272	285	425
Graterford	153	203	356	167	593	760	1,116
Greensburg	58	80	138	14	220	234	372
Greene	106	129	235	20	446	466	701
Houtzdale	113	126	239	15	315	330	569
Huntingdon	98	125	223	11	405	416	639
Laurel Highlands	133	110	243	23	206	229	472
Mahanoy	101	119	220	19	309	328	548
Mercer	65	94	159	16	225	241	400
Muncy	115	84	199	140	164	304	503
Pine Grove	64	86	150	8	205	213	363
Pittsburgh	81	85	166	17	281	298	464
Quehanna	36	44	80	14	103	117	197
Retreat	64	80	144	14	215	229	373
Rockview	85	154	239	17	397	414	653
Smithfield	67	90	157	10	305	315	472
Somerset	92	127	219	10	319	329	548
Waymart	134	144	278	18	396	414	692
TOTAL	2,567	3,032	5,599	896	8,251	9,147	14,746



Section VI

Glossary

Capacity: “Operational Bed Capacity” represents the optimal number of inmates that each facility can house based on a number of factors. In addition to cell size and security level, “Operational Bed Capacity” takes into consideration availability of inmate employment or programming, support services, and facility infrastructure.

Capital cases: Inmate found guilty of first degree murder and sentenced by a judge to death by execution.

Commutations: A change of a legal penalty or punishment to a lesser one. A commutation for an inmate serving a life sentence is the establishment of a parole date.

Conditional release: The release of an inmate from the Department of Corrections to another supervising authority. This method of release includes the following types:

State Parole: When an inmate is released to the community and is supervised by the Pennsylvania Board of Probation and Parole.

County Parole: When an inmate is released to the community and is supervised by the county probation/parole department.

Reparoled (State): When an inmate is paroled from a state correctional facility, returned to the Department of Corrections for a parole violation, serves time in the institution, and is again released to the community under supervision of the Pennsylvania Board of Probation and Parole.

County transfers: When an inmate serving a county sentence is transferred to the Department of Corrections. The reason for the transfer could be for security, medical, or mental health reasons.

Court Commitments: A commitment imposed by a court sentencing an individual to confinement in a state correctional facility.

Detentioners: An inmate who has not been sentenced to a Pennsylvania state correctional facility, but who is being housed in a Pennsylvania state correctional facility at the request of another jurisdiction such as a county, another state, or the federal government.

Escape: The intentional act of an inmate to leave the custody of the Department of Corrections. The act of escape includes the following types:

Breach escape: When an inmate, in the process of intentionally leaving the the custody of the Department of Corrections, compromises the security perimeter of the facility.

Walk away escape: When an inmate intentionally leaves the custody of the DOC while on an authorized release or furlough (i.e., work detail, medical treatment, educational release, etc.). A walk away, as opposed to a breach escape, does not compromise the security perimeter of the facility as it occurs outside the security perimeter (i.e., wall, fence, etc.).

Incarceration rate: The number of state sentenced inmates incarcerated per 100,000 Pennsylvania residents.

Lifer: An individual with a minimum and maximum sentence of natural life.

Minimum sentence: The minimum amount of time imposed by the court that an inmate must serve before being eligible for release from prison. This sentence cannot exceed one-half of the maximum sentence under the Pennsylvania statute.

Maximum sentence: The maximum amount of time spent imposed by the court that an inmate can be required to serve before being released from prison.

Non-recommit action: The release of a parolee who was returned to the department as a possible parole violator. If the return action is not adjudicated as a parole violation, the parolee is re-released to parole.

Offender: Generally refers to an individual who is convicted of an offense but who has not been received by the state by the state prison system. This term is used in the Receptions Section of this report to denote newly admitted individuals.

Parole violators: Persons paroled from prison who violated the terms and/or conditions of their parole. Parole violators are generally classified as technical or convicted violators. Technical violators are recommitted for failure to adhere to the requirements of their parole plan (i.e., non-reporting to agent or program, non-criminal drug violations, etc.), while convicted violators are found guilty of new criminal offenses. A technical/convicted violator is committed for violating conditions of parole in addition to being charged with commission of a new criminal offense.

Part I Offenses: Offenses identified by the Uniform Crime Report which are of a serious nature and are usually reported to law enforcement agencies. Crimes identified as Part I Offenses include: criminal homicide, forcible rape, robbery, assault, burglary, larceny-theft, motor vehicle theft and arson.

Part II Offenses: Offenses not classified as Part I Offense as defined above because they are less serious crimes. Crimes identified as Part II offenses include: fraud, stolen property, forgery, narcotic drugs, and drunken driving.

Reparole: A parole release after a previous parole revocation. The initial parole and subsequent reparole occur during the same sentence.

Sentenced: Inmates who are serving time on court-imposed sentences. (Does not include inmates who are serving time because of parole violations.)

Uniform Crime Report (UCR) Offense Groupings: Offense classifications employed by Pennsylvania's criminal justice system. In order to remain compatible with the Federal Bureau of Investigation, the categories of offense classification utilized are the same as those employed at the national level. The crimes defined in this classification system are grouped as Part I or Part II offenses.

Unconditional release: The means of release for inmates who have either served their maximum sentence or have had their sentences reduced or vacated by the court (e.g., max out, executed, court order, etc.).