



**THE ADMINISTRATION
OF
VOTER REGISTRATION
IN
PENNSYLVANIA**

2014 REPORT TO THE GENERAL ASSEMBLY

PENNSYLVANIA DEPARTMENT OF STATE

JUNE 2015

**Tom Wolf
Governor**

**Pedro A. Cortés
Secretary of the Commonwealth**



COMMONWEALTH OF PENNSYLVANIA
DEPARTMENT OF STATE

June 30, 2015

Dear Members of the General Assembly:

As Secretary of the Commonwealth, I am pleased to report to you on the administration of voter registration in Pennsylvania for calendar year 2014. I trust you will find this report useful.

Voter registration in Pennsylvania is a joint state-county effort. During 2014, the Department of State (Department) continued its partnership with the state's 67 county election boards and voter registration commissions. The Department also collaborates with Commonwealth agencies designated under the National Voter Registration Act of 1993 (NVRA) to administer voter registration programs. The Department supports the agencies by providing needed supplies and conducting training sessions and informational meetings.

The Statewide Uniform Registry of Electors (SURE) system, implemented in Pennsylvania through Act 3 of 2002, is the bedrock of Pennsylvania's voter registration system. As of December 31, 2014, there were approximately 8.1 million registered voters in Pennsylvania. In 2014, the Department deployed several software updates to the system to improve the administration of voter registration.

The Department remains committed to fulfilling its responsibilities under the Help America Vote Act of 2002. The Department will strive to promote voter registration and civic engagement through its outreach efforts across the Commonwealth.

If you have questions about this report, please contact me or the Bureau of Commissions, Elections and Legislation at (717) 787-5280.

Sincerely,

A handwritten signature in black ink that reads "Pedro A. Cortés".

Pedro A. Cortés
Secretary of the Commonwealth

Table of Contents

Voter Registration Statistics	1
Affiliation	1
2014 Registrants	1
Change Since 2010	1
% Change Since 2010.....	1
Areas of Growth and Decline	2
List Maintenance Activities	3
Voter Registration Cancellations	4
Classification.....	4
Voter Status.....	4
Description	4
2014 Total.....	4
Agency Registrations	6
Code.....	7
Agency	7
2014 Total.....	7
Pennsylvania Department of Transportation.....	8
Application Process to Register to Vote at a PennDOT Center	8
Voter Hall of Fame.....	9
Statewide Uniform Registry of Electors (SURE).....	9
SURE Applications.....	10
SURE Voter Registration (SURE VR).....	10
SURE Portals	10
Public Portal.....	10
County Portal.....	10
Agency Portal.....	10
Kiosk	10
2014 SURE Release Notes.....	10
February 12 Release (Version 15).....	10
September 26 Release (Version 16)	11
Monthly Releases	11

*Commonwealth of Pennsylvania
Department of State*

*The Administration of Voter Registration in Pennsylvania
2014 Report to the General Assembly*

In 2014 the Department of State (Department) worked closely with the public, each of the 67 county voter registration offices, Commonwealth agencies designated with voter registration responsibilities, and voter registration advocacy groups. This report represents a summary of initiatives and statistics that support voter registration administration in Pennsylvania.

All 2014 data referenced in this report is available in its entirety within the “Annual Report Data” section starting on page 12 of this report. Data from previous years can be found in the respective annual report.

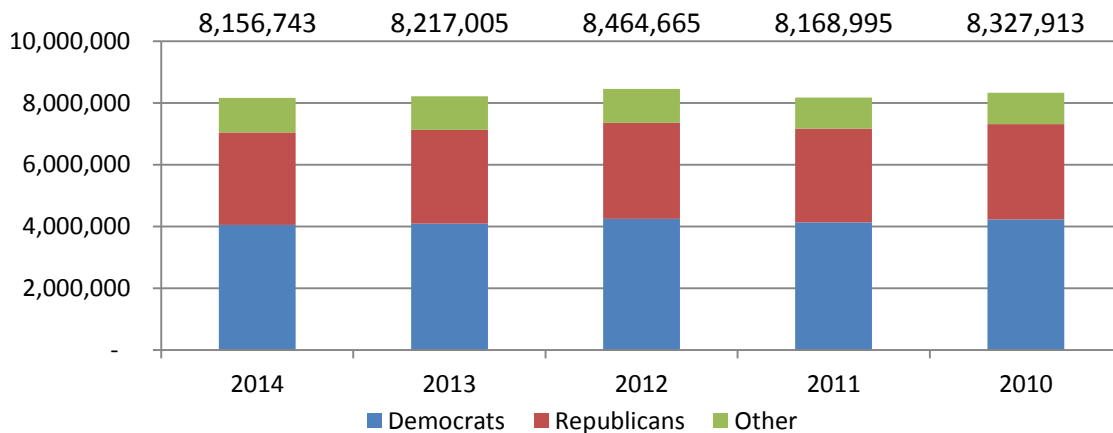
Voter Registration Statistics

Through the Statewide Uniform Registry of Electors (SURE) system, the Department maintains a complete list of all registered voters in the Commonwealth. As of December 2014 there are currently 8,156,743 registered voters. This is a decrease of 60,262 since December 2013, and a decrease of 171,170 since December 2010.

Total Voter Registration by Party

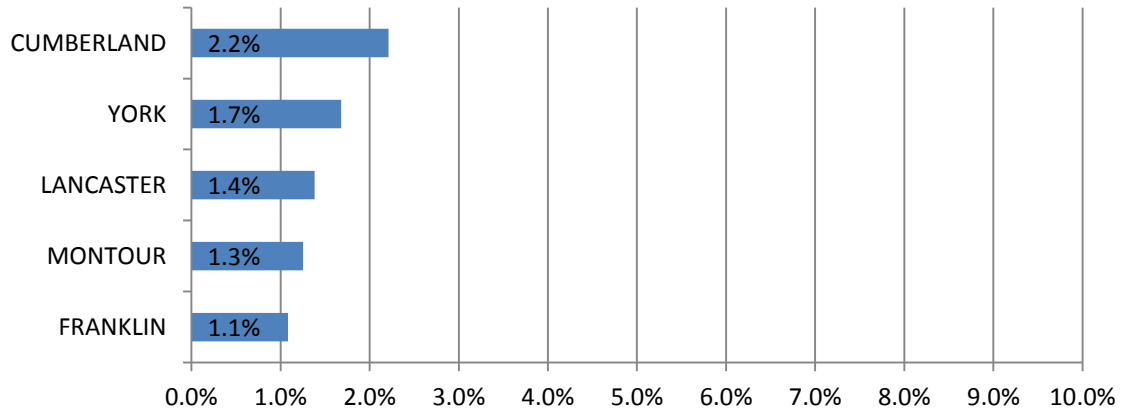
Affiliation	2014 Registrants	Change Since 2010	% Change Since 2010
Democratic	4,044,650	-182,366	-4.3%
Republican	2,998,028	-88,233	-2.9%
Other/No Affiliation	1,114,065	+99,687	+9.8%

Total Voter Registration by Party, Five-Year Trend

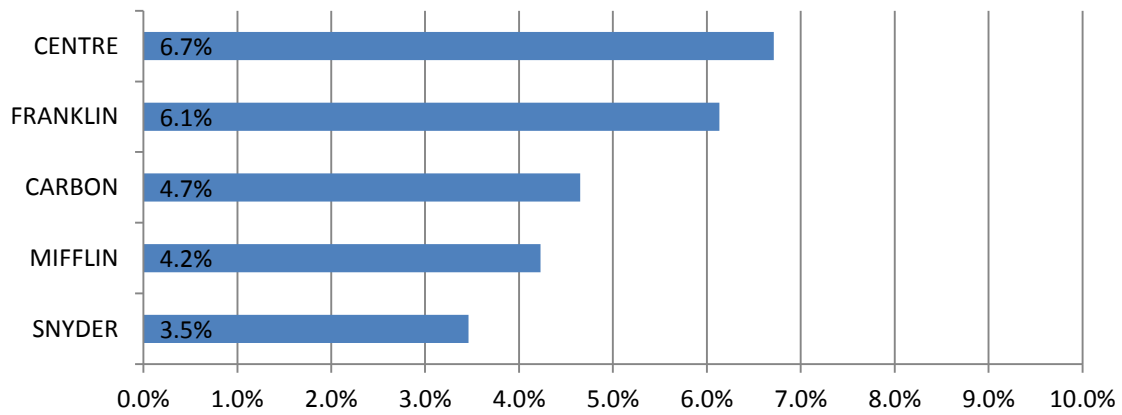


Areas of Growth and Decline

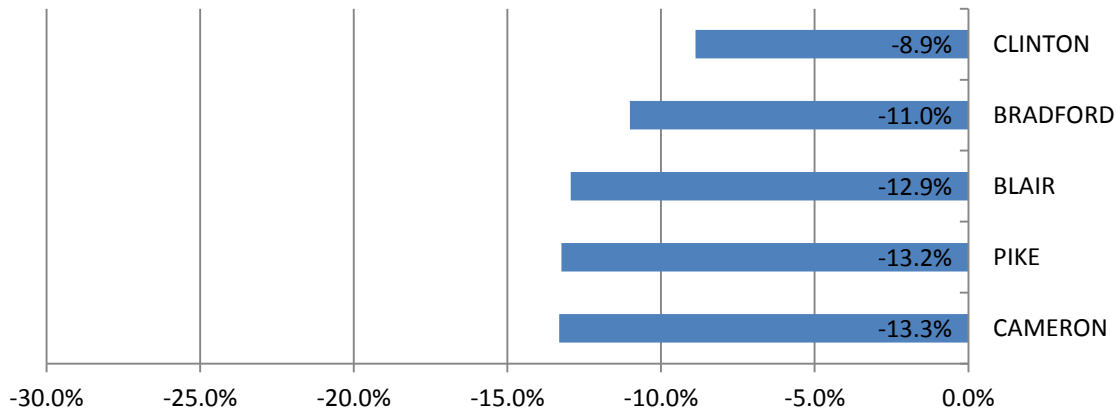
Counties with Highest Overall Registration Growth Since 2013



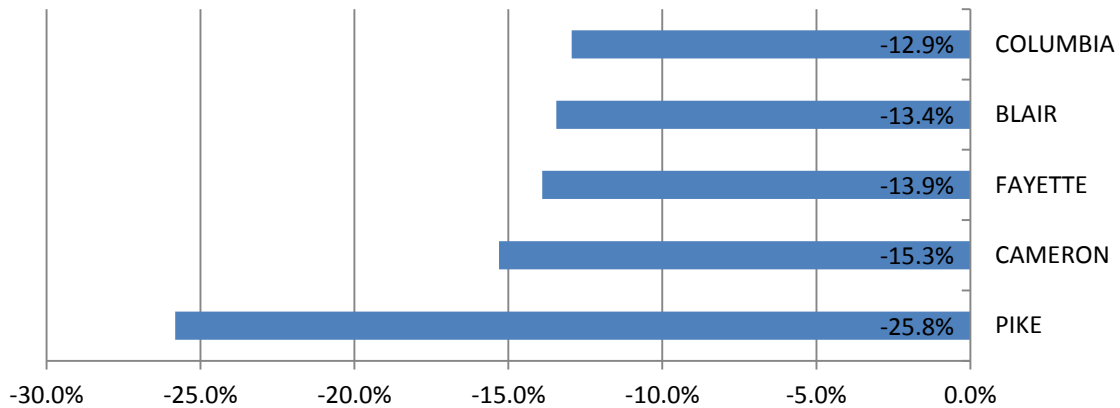
Counties with Highest Overall Registration Growth Since 2010



Counties with Highest Overall Registration Decline Since 2013



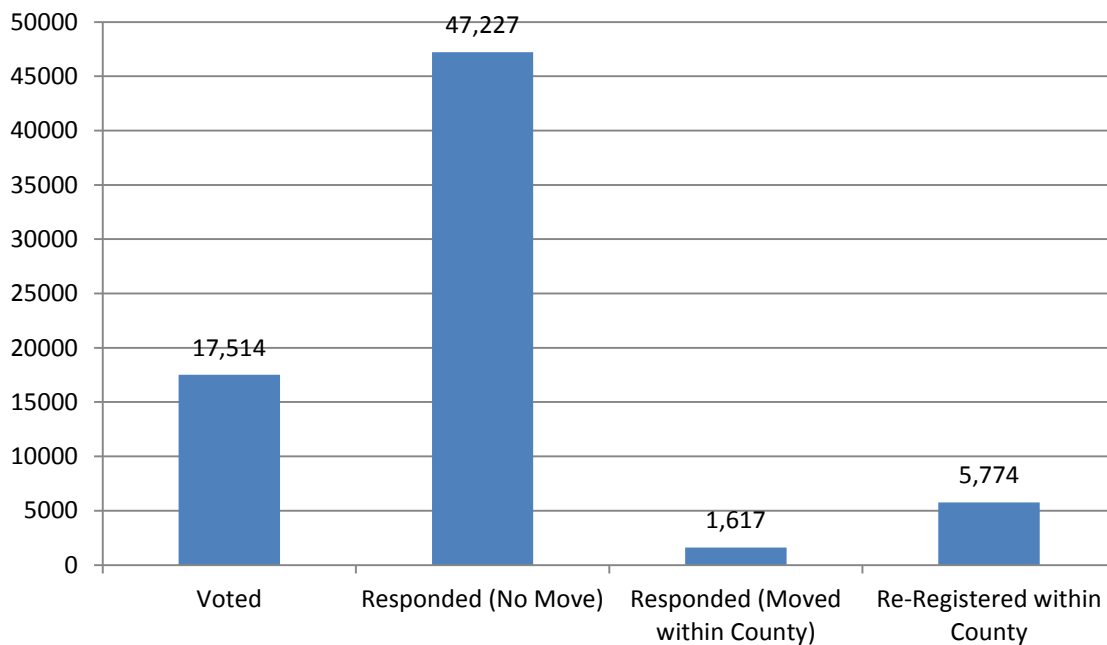
Counties with Highest Overall Registration Decline Since 2010



List Maintenance Activities

In 2014, counties performed regular list maintenance activities within the SURE system. Counties send five-year notices to registrants who have not voted in two federal general elections and address verification notices to voters who the United States Postal Service has identified through their change of address lists and no longer live at the address on file with the county registration office. During 2014, counties sent 391,617 five-year notices and 120,368 address verification notices. Additionally, 455,093 voters who moved were identified by PennDOT when they changed their address with PennDOT. PennDOT sends these address changes to the Department which forwards them to the counties to update their records. As a result of these combined list maintenance activities 759,162 voter registrations were marked “inactive” and 379,835 were cancelled in 2014.

2014 responses to 379,835 Five-Year Notices Sent by Counties*



*In addition to the above breakdown, two voters who had their registration cancelled subsequently re-registered

Voter Registration Cancellations

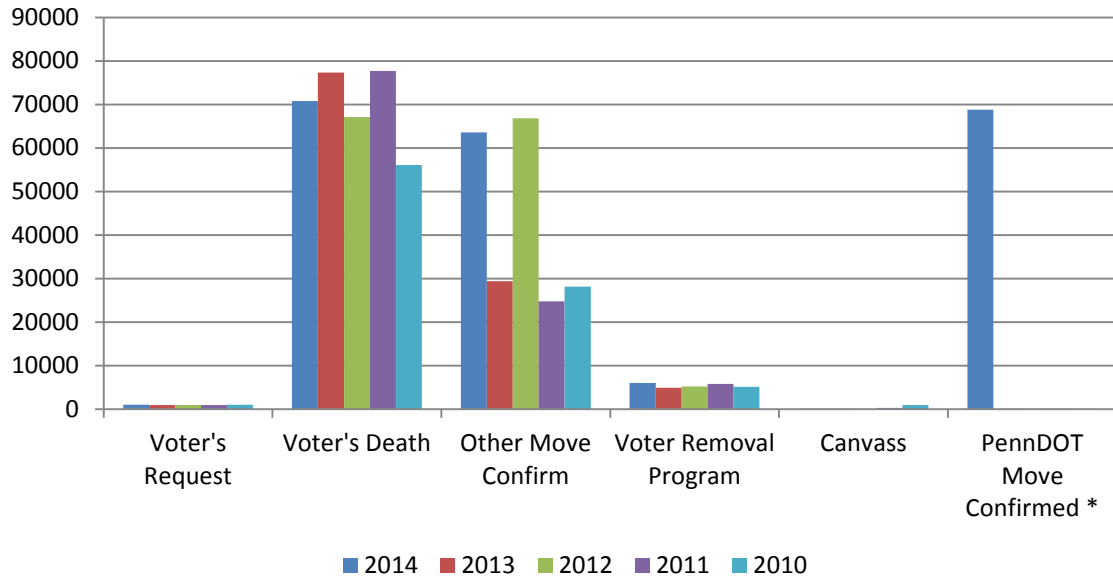
During 2014, the Department recorded 379,835 voter registration cancellations. When a voter registration is cancelled, the record is tagged in the SURE system to identify the reason for cancellation. The SURE system allows counties to track the reason for cancellation based on 14 different classifications as set forth in the chart below.

A voter is marked as inactive if he or she is sent a mailing by the county asking the voter to confirm his or her continued residence, and fails to respond. Voters may be sent the mailings based on data the county receives under a national change-of-address program or when a voter fails to vote for five years. See 25 Pa. C.S. §§ 1901(b)(1), 1901(b)(3), 1901(c). All other voters are listed as “active.”

<i>Classification</i>	<i>Voter Status</i>	<i>Description</i>	<i>2014 Total</i>
Voter's Request	Active	Registration cancelled at the request of the voter	1,020
Voter's Death	Active	Registration cancelled when the county is notified of a voter's death via state or local officials	70,798
Other Move Confirm	Active	The county has confirmed that the voter has moved from their currently listed address	63,605
Voter Removal Program	Active	Cancelled as part of regular list maintenance activities	6,032
Canvass	Active	The county visits the address on record to confirm the voter no longer lives there	13
PennDOT Move Confirmed*	Active	PennDOT confirms that the voter has changed their address	68,770
Voter's Request	Inactive	Registration cancelled at the request of the voter	355
Voter's Death	Inactive	Registration cancelled when the county is notified of a voter's death via state or local officials	12,533
Other Move Confirmed	Inactive	The county has confirmed that the voter has moved from their currently listed address	12,278
Voter Removal Program	Inactive	Cancelled as part of regular list maintenance activities	120,135
PennDOT Move Confirmed*	Inactive	PennDOT confirms that the voter has changed their address	8,295
Response to Mailing	Inactive	The voter or authorized individual responds to a correspondence from the county confirming that the voter is no longer eligible to vote at their currently listed address	3,554
Canvass	Inactive	The county visits the address on record to confirm the voter no longer lives there	34
Five-Year Notice	Inactive	Cancelled as part of regular list maintenance activities	9,534

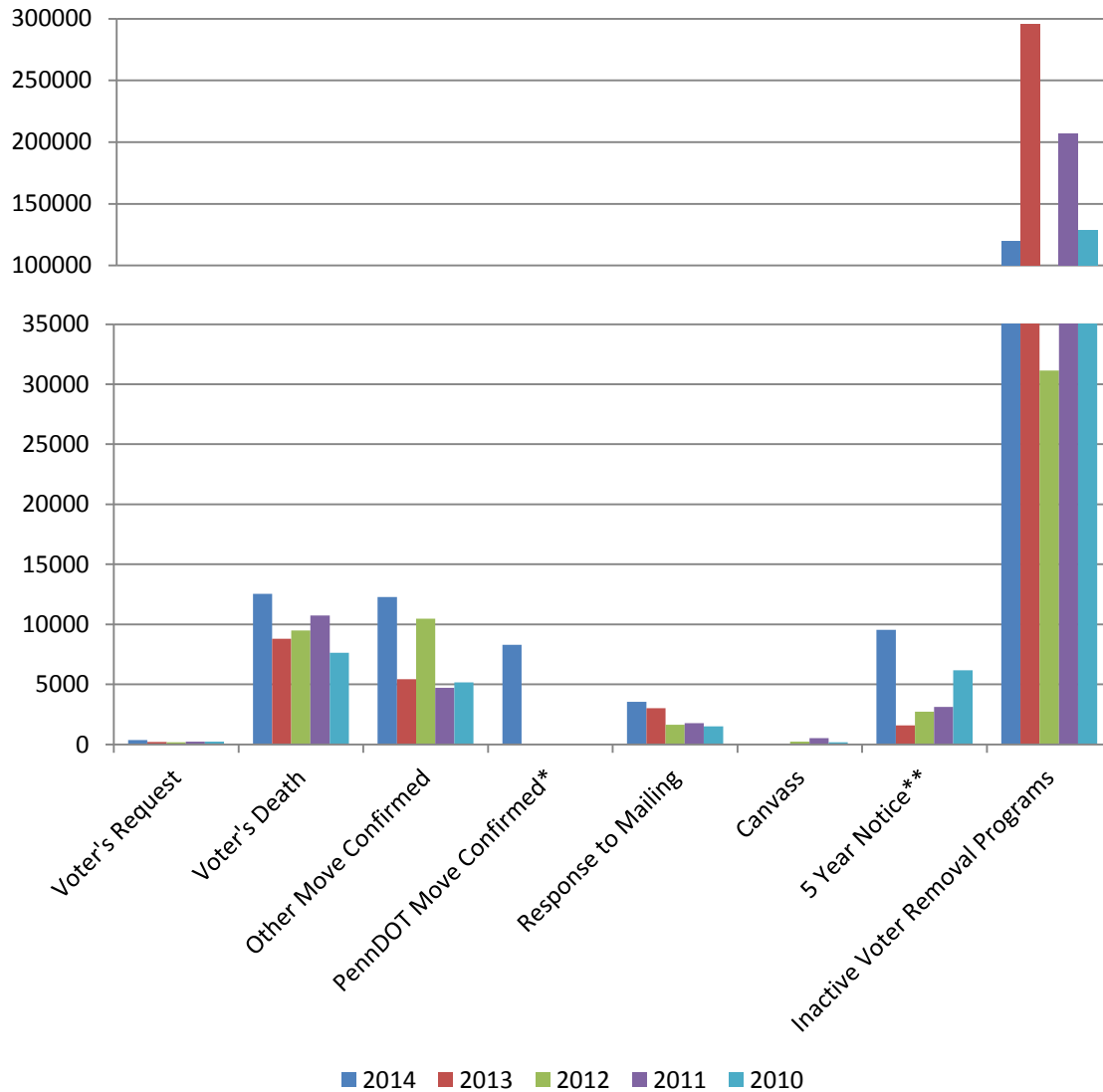
* Prior to the 2014 Annual Report, PennDOT application source codes were included in a generic “Other Means” category.

Active Voter Registration Cancellations by Code and Year



* Prior to the 2014 Annual Report, PennDOT application source codes were included in a generic "Other Means" category.

Inactive Voter Registration Cancellations by Code and Year



* Prior to the 2014 Annual Report, PennDOT application source codes were included in a generic "Other Means" category.

** Allegheny County began processing a large backlog of 5-year notices during 2014

Agency Registrations

The National Voter Registration Act (NVRA) requires that "(1) Each state shall designate agencies for the registration of voters in election for Federal offices. (2) Each state shall designate as voter registration agencies – (A) all offices of the state that provide public assistance; and (B) all offices in the State that provide State-funded programs primarily engaged in providing service to persons with disabilities."¹

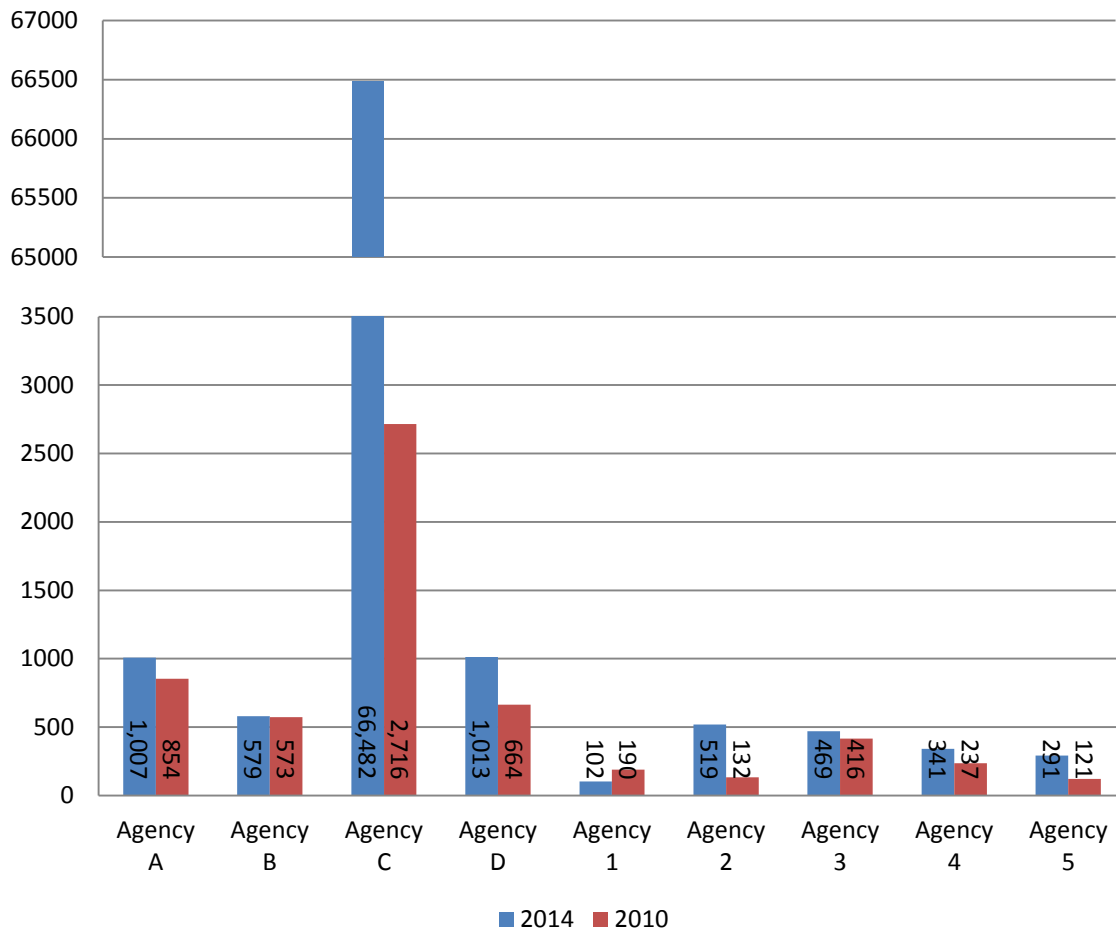
In light of the federal mandate, the Department continues to work with the covered agencies to ensure that the requirements of the NVRA are met. Since 2010 the Department has used bar-coded registration

¹ See 52 U.S.C. § 20506

forms that allow the Department to identify the source agency of registrations and more accurately track the Department's efforts, and subsequently ensure that agency efforts comply with the requirements of the NVRA.

Code	Agency		2014 Total
Agency A	WIC	Women, Infant and Children Nutrition Clinics	1,007
Agency B	Agencies Serving People with Disabilities and County MH/ID Offices	Blindness and Visual Services (BVS) district offices; BVS Contractors; Centers for Independent Living; State Mental Health Centers; State Mental Health Hospitals; Office of Vocational Rehabilitation district offices; County Mental Health and Intellectual Disabilities	579
Agency C	CAO	County Assistance Office	66,482
Agency D	COOC	Clerk of Orphans' Courts	1,013
Agency 1	Children and Youth	Children and Youth, Children and Early Learning Organizations	102
Agency 2	AAA	Area Agencies on Aging	519
Agency 3	Health Care	Health Care not for profit, Health Care-managed care and other for-profit organizations	469
Agency 4	SSHE/Special Education Programs	Student Disability Services Offices at Universities within the State System of Higher Education; Bureau of Special Education	341
Agency 5	Para-transit	Para-transit providers	291
	Recruitment Centers	Armed Services Recruitment Centers	9
	PennDOT COA transfers	Transferred from other counties due to PennDOT changes of address.	103,962

Agency Registration from 2014 and 2010



Pennsylvania Department of Transportation

Since 1995, the Pennsylvania Department of Transportation (PennDOT) has played an integral role in the voter registration process. PennDOT provides Commonwealth citizens with an opportunity to apply to register to vote while receiving or renewing their driver’s license at a PennDOT center as well as the opportunity to update their registration in-person and online. In 2014, more than 220,000 individuals applied to register to vote using this resource.

Application Process to Register to Vote at a PennDOT Center

- PennDOT customers visit a photo license center with a driver’s license application card provided by PennDOT. The application card contains a printed two-dimensional bar code. The bar code is scanned and the computer system determines the customer’s age. It then determines which customers will be at least 18 years old by the date of the next election and asks if the customer wishes to apply to register to vote;
- The program is designed to ask customers if they are currently registered to vote. If not, they are provided the opportunity to apply to register;
- Customers must confirm that they are U.S. citizens and qualified to register in the Commonwealth;

- Customers who choose to apply to register to vote are asked to confirm their county of residence and indicate a party preference. The customer is asked for optional information (telephone number and race);
- Customers are advised of the penalty for furnishing false information and are asked to sign a declaration that the information they have provided is true and correct to the best of their knowledge;
- Customers are provided a receipt indicating pertinent information about their voter registration application, including the date on which they applied at the photo license center. The receipt instructs customers to contact their county voter registration office if they do not receive a voter identification card within two weeks.

The completed applications are transmitted electronically by PennDOT's contracted vendor to the Department, which in turn forwards the applications to each county voter registration office via SURE system. In 2014, the vendor transmitted 224,361 "motor voter" applications to the Department.

PennDOT provides address change information to the Department. The Department forwards the information to the appropriate county voter registration office. In 2014, a total of 680,194 change of address applications were forwarded from the Department to county election officials.

Voter Hall of Fame

The Pennsylvania Voter Hall of Fame program is administered by the Department of State, Division of Elections and Voter Registration. The program was established to promote awareness and encourage all Pennsylvanians to exercise their right to vote. The Voter Hall of Fame publicly honors Pennsylvanians who have voted in at least 50 consecutive November elections. The inductees serve as ambassadors in their communities – they lead by example, encouraging participation in the electoral process.

In 2014, the Department inducted 349 citizens from 12 counties into the Pennsylvania Voter Hall of Fame. The 349 new members bring total membership to 21,359, with the membership representing 64 counties throughout the Commonwealth. As an ongoing recognition, the Department maintains an interactive display on the third floor of the North Office Building in Harrisburg.

Statewide Uniform Registry of Electors (SURE)

SURE is the centralized voter registration and election management system designed to assure the accuracy and integrity of the Commonwealth's voter registration records maintained by the election authorities in Pennsylvania's 67 counties. The SURE system is a platform that supports the critical functions of the Commonwealth's elections — from determining voter eligibility to maintaining precinct data to producing poll books. A centralized, uniform registry that is accessible to all county offices greatly enhances the overall accuracy and integrity of the voter registration rolls and the resulting quality of voter services.

In 2014, the division of SURE within the Bureau of Commissions, Elections, and Legislation administered two significant enhancement deployments on February 12, 2014, and September 26, 2014. Additionally, the division deployed eight smaller monthly improvements throughout the year.

SURE Applications

SURE Voter Registration (SURE VR)

The SURE VR application is a resource for counties to process and maintain voter registration records as well as a number of election related tasks. This includes the management of vote history, absentee ballots, poll books, election related reports, and voter registration correspondence to voters.

SURE Portals

Public Portal

Voters can access the SURE Public Portal through the Department of State website where the department offers them the ability to check their voter registration status, locate their polling place, and retrieve electronic balloting materials for UMOVA qualified voters.

County Portal

The SURE County Portal provides counties with voter search, provisional ballot processing/certification, and other basic capabilities through a standard web browser rather than the specialized equipment required to access SURE VR. This is helpful for seasonal and temporary staff who may need to access basic SURE functionality around an election day or other busy period of time. Additionally, counties use the portal to upload election results, certify election results, and certify voter registration statistics.

Agency Portal

The agency portal is used by Department of State personnel to manage elections and campaign finance data. This includes an archive of historic election results on the precinct and county level, the electronic management of nomination petitions, and the management of the Department's campaign finance records.

Kiosk

The kiosk is a public portal which is accessed through terminals located in county election offices and at the Department of State. These portals allow the public to electronically submit voter registration applications, submit changes to their current registration, and search public state-wide voter registration rolls.

2014 SURE Release Notes

February 12 Release (Version 15)

Version 15 release contained several software changes to the SURE VR and SURE Portal systems, including the following:

- The ability to process an absentee application for a military applicant that is not registered to vote.
- Implementation of a Federal Write-In Absentee Ballot (FWAB) voter registration and absentee application source types to allow for qualified individuals to register to vote and apply for an absentee ballot when a FWAB is received.
- Functionality to allow for individuals to purchase the PA Full Voter Export online.
- An online application for citizens to electronically submit an Election Complaint to county election directors and district attorney offices.

September 26 Release (Version 16)

Version 16 release contained several software changes to the SURE VR and SURE Portal systems, including to the following:

- Functionality to allow for Bedridden Veterans to apply for and receive absentee balloting materials through the U.S. Postal Service or electronically.
- Updates to List Maintenance correspondences; Address Verification Notice (AVN) and the PA Duplicate Voter Notice.
- Implementation of a PA Out of State Duplicate Voter Notice
- Safeguards to alert county election officials and ensure only one vote is recorded per voter regardless of the method that the vote was cast.

Monthly Releases

A total of eight monthly releases were deployed to the SURE VR & SURE Portal environments during the calendar year of 2014. The releases included 21 enhancements and 13 software corrections to the applications used by county election officials to administer voter registration and elections with the SURE systems.

Annual Report Data

Appendix A

Voter registration figures by county and political party as of December 31, 2014.

COMMONWEALTH OF PENNSYLVANIA
POLITICAL PARTY REGISTRATION - DECEMBER 31, 2014

County Name	Republican	Democratic	Libertarian	Other	Total	County Name	Republican	Democratic	Libertarian	Other	Total
ADAMS	31,552	18,902	463	9,058	59,975	LACKAWANNA	35,886	90,317	547	12,258	139,008
ALLEGHENY	239,027	527,530	5,086	112,921	884,564	LANCASTER	163,020	99,383	2,114	48,164	312,681
ARMSTRONG	20,011	16,778	283	4,115	41,187	LAWRENCE	22,082	30,682	275	5,939	58,978
BEAVER	34,902	59,144	565	11,543	106,154	LEBANON	43,349	26,051	588	11,081	81,069
BEDFORD	19,539	9,797	134	2,818	32,288	LEHIGH	72,094	105,466	1,485	34,499	213,544
BERKS	89,991	112,601	1,797	34,057	238,446	LUZERNE	61,766	107,437	1,026	19,509	189,738
BLAIR	40,396	23,971	396	8,280	73,043	LYCOMING	33,785	21,857	376	8,168	64,186
BRADFORD	20,412	10,406	228	4,154	35,200	McKEAN	13,403	7,592	164	3,051	24,210
BUCKS	175,206	187,165	3,190	68,235	433,796	MERCER	29,496	33,993	412	8,962	72,863
BUTLER	61,387	41,056	809	15,526	118,778	MIFFLIN	13,994	7,703	125	2,460	24,282
CAMBRIA	26,717	46,666	353	7,572	81,308	MONROE	31,741	47,414	658	18,910	98,723
CAMERON	1,527	1,237	12	337	3,113	MONTGOMERY	202,032	246,499	3,362	79,963	531,856
CARBON	14,693	18,365	271	5,489	38,818	MONTOUR	5,583	4,586	89	1,867	12,125
CENTRE	41,815	44,028	693	21,877	108,413	NORTHAMPTON	65,612	94,235	1,434	34,960	196,241
CHESTER	143,050	121,072	2,157	55,252	321,531	NORTHUMBERLAND	24,823	22,039	316	6,350	53,528
CLARION	11,873	8,403	118	2,374	22,768	PERRY	16,339	7,037	190	3,063	26,629
CLEARFIELD	23,564	21,498	276	5,547	50,885	PHILADELPHIA	119,574	808,352	3,142	99,758	1,030,826
CLINTON	8,729	8,957	125	2,590	20,401	PIKE	15,076	12,548	282	7,267	35,173
COLUMBIA	15,708	15,383	273	5,525	36,889	POTTER	6,402	2,900	75	979	10,356
CRAWFORD	25,456	20,268	298	5,882	51,904	SCHUYLKILL	38,756	34,342	472	8,837	82,407
CUMBERLAND	77,581	50,474	1,180	22,843	152,078	SNYDER	13,031	5,466	149	2,583	21,229
DAUPHIN	70,704	79,297	1,061	22,215	173,277	SOMERSET	24,284	18,688	201	4,209	47,382
DELAWARE	168,922	172,961	1,649	46,385	389,917	SULLIVAN	2,232	1,563	23	403	4,221
ELK	7,262	9,813	87	1,996	19,158	SUSQUEHANNA	13,488	8,069	147	3,006	24,710
ERIE	60,396	95,210	1,003	21,982	178,591	TIOGA	14,476	7,003	168	3,123	24,770
FAYETTE	21,869	49,721	366	6,177	78,133	UNION	11,739	6,722	117	3,642	22,220
FOREST	1,644	1,352	14	285	3,295	VENANGO	15,988	11,104	234	3,541	30,867
FRANKLIN	50,203	25,260	609	12,565	88,637	WARREN	13,856	10,801	149	4,213	29,019
FULTON	5,341	2,783	62	890	9,076	WASHINGTON	49,594	74,660	766	15,375	140,395
GREENE	6,534	13,522	78	1,891	22,025	WAYNE	16,149	9,846	196	4,880	31,071
HUNTINGDON	16,036	9,153	117	2,848	28,154	WESTMORELAND	91,941	119,611	1,278	26,507	239,337
INDIANA	20,819	20,123	255	6,449	47,646	WYOMING	8,786	5,522	86	1,769	16,163
JEFFERSON	15,455	10,070	156	3,061	28,742	YORK	131,877	98,373	2,254	40,881	273,385
JUNIATA	7,742	4,151	55	1,237	13,185	PENNSYLVANIA	2,998,317	4,044,978	47,119	1,064,153	8,154,567

Appendix B

Voter registration totals from 2013-2014

REP: Republican Party;

DEM: Democratic Party;

INC: Increase in party registration;

DEC: Decrease in party registration.

COMMONWEALTH OF PENNSYLVANIA
COMPARISON OF VOTER REGISTRATION TOTALS
JANUARY 2013 - DECEMBER 2014

COUNTY NAME	REPUBLICAN			DEMOCRATIC		
	REP 2013	REP 2014	% DIFF	DEM 2013	DEM 2014	% DIFF
ADAMS	31,803	31,552	0.01	19,270	18,902	0.02
ALLEGHENY	237,622	239,027	-0.01	527,273	527,530	0.00
ARMSTRONG	19,936	20,011	0.00	16,895	16,778	0.01
BEAVER	35,735	34,902	0.02	61,725	59,144	0.04
BEDFORD	19,562	19,539	0.00	9,959	9,797	0.02
BERKS	91,927	89,991	0.02	116,888	112,601	0.04
BLAIR	45,573	40,396	0.13	27,963	23,971	0.17
BRADFORD	22,664	20,412	0.11	11,780	10,406	0.13
BUCKS	174,791	175,206	0.00	186,339	187,165	0.00
BUTLER	61,954	61,387	0.01	42,594	41,056	0.04
CAMBRIA	27,323	26,717	0.02	49,003	46,666	0.05
CAMERON	1,716	1,527	0.12	1,457	1,237	0.18
CARBON	14,512	14,693	-0.01	18,580	18,365	0.01
CENTRE	41,663	41,815	0.00	43,976	44,028	0.00
CHESTER	148,007	143,050	0.03	125,774	121,072	0.04
CLARION	11,866	11,873	0.00	8,565	8,403	0.02
CLEARFIELD	23,451	23,564	0.00	21,890	21,498	0.02
CLINTON	9,584	8,729	0.10	9,888	8,957	0.10
COLUMBIA	16,404	15,708	0.04	16,473	15,383	0.07
CRAWFORD	25,612	25,456	0.01	20,720	20,268	0.02
CUMBERLAND	76,669	77,581	-0.01	49,371	50,474	-0.02
DAUPHIN	71,959	70,704	0.02	80,067	79,297	0.01
DELAWARE	169,610	168,922	0.00	170,598	172,961	-0.01
ELK	7,313	7,262	0.01	10,153	9,813	0.03
ERIE	60,268	60,396	0.00	95,825	95,210	0.01
FAYETTE	22,124	21,869	0.01	52,199	49,721	0.05
FOREST	1,646	1,644	0.00	1,381	1,352	0.02
FRANKLIN	49,653	50,203	-0.01	25,388	25,260	0.01
FULTON	5,260	5,341	-0.02	2,829	2,783	0.02
GREENE	6,458	6,534	-0.01	13,719	13,522	0.01
HUNTINGDON	15,878	16,036	-0.01	9,229	9,153	0.01
INDIANA	21,456	20,819	0.00	21,541	20,123	0.07
JEFFERSON	15,388	15,455	0.00	10,115	10,070	0.00
JUNIATA	7,770	7,742	0.00	4,255	4,151	0.03
LACKAWANNA	38,447	35,886	0.07	94,909	90,317	0.05
LANCASTER	162,264	163,020	0.00	98,255	99,383	-0.01
LAWRENCE	22,314	22,082	0.01	31,555	30,682	0.03
LEBANON	43,195	43,349	0.00	25,921	26,051	0.00
LEHIGH	73,928	72,094	0.03	108,442	105,466	0.03

COMMONWEALTH OF PENNSYLVANIA
COMPARISON OF VOTER REGISTRATION TOTALS
JANUARY 2013 - DECEMBER 2014

COUNTY NAME	REPUBLICAN			DEMOCRATIC		
	REP 2013	REP 2014	% DIFF	DEM 2013	DEM 2014	% DIFF
LUZERNE	63,940	61,766	0.04	111,205	107,437	0.04
LYCOMING	34,396	33,785	0.02	22,684	21,857	0.04
MCKEAN	13,411	13,403	0.00	7,609	7,592	0.00
MERCER	29,114	29,496	-0.01	34,267	33,993	0.01
MIFFLIN	13,987	13,994	0.00	7,785	7,703	0.01
MONROE	32,429	31,741	0.02	48,954	47,414	0.03
MONTGOMERY	208,024	202,032	0.03	250,182	246,499	0.01
MONTOUR	5,582	5,583	0.00	4,560	4,586	-0.01
NORTHAMPTON	64,986	65,612	-0.01	94,450	94,235	0.00
NORTHUMBERLAND	24,949	24,823	0.01	22,281	22,039	0.01
PERRY	16,503	16,339	0.01	7,227	7,037	0.03
PHILADELPHIA	119,892	119,574	0.00	804,666	808,352	0.00
PIKE	17,209	15,076	0.14	14,821	12,548	0.18
POTTER	6,557	6,402	0.02	3,086	2,900	0.06
SCHUYLKILL	39,765	38,756	0.03	35,596	34,342	0.04
SNYDER	13,062	13,031	0.00	5,449	5,466	0.00
SOMERSET	24,974	24,284	0.03	19,699	18,688	0.05
SULLIVAN	2,241	2,232	0.00	1,593	1,563	0.02
SUSQUEHANNA	13,827	13,488	0.03	8,410	8,069	0.04
TIOGA	14,815	14,476	0.02	7,272	7,003	0.04
UNION	11,984	11,739	0.02	7,131	6,722	0.06
VENANGO	16,390	15,988	0.03	11,432	11,104	0.03
WARREN	13,933	13,856	0.01	10,929	10,801	0.01
WASHINGTON	49,027	49,594	-0.01	75,286	74,660	0.01
WAYNE	16,645	16,149	0.03	10,201	9,846	0.04
WESTMORELAND	91,257	91,941	-0.01	120,744	119,611	0.01
WYOMING	9,171	8,786	0.04	5,858	5,522	0.06
YORK	131,006	131,877	-0.01	96,566	98,373	-0.02
PENNSYLVANIA	3,032,381	3,001,820	0.01	4,092,707	4,045,622	0.01

Appendix C

Data for the various voter registration methods.

Total registration activity (both agency and non-agency sources) includes:

- New registrations
- Changes of address (out of county)
- Changes of name or party.

New registration applications (both agency and non-agency sources) includes:

- Only applications for new voters

Explanation of Abbreviations: Appendix C tables

Code	Agency		2014 Total
Agency A	WIC	Women, Infant and Children Nutrition Clinics	1,007
Agency B	Agencies Serving People with Disabilities and County MH/ID Offices	Blindness and Visual Services (BVS) district offices; BVS Contractors; Centers for Independent Living; State Mental Health Centers; State Mental Health Hospitals; Office of Vocational Rehabilitation district offices; County Mental Health and Intellectual Disabilities	579
Agency C	CAO	County Assistance Office	66,482
Agency D	COOC	Clerk of Orphans' Courts	1,013
Agency 1	Children and Youth	Children and Youth, Children and Early Learning Organizations	102
Agency 2	AAA	Area Agencies on Aging	519
Agency 3	Health Care	Health Care not for profit, Health Care-managed care and other for-profit organizations	469
Agency 4	SSHE/Special Education Programs	Student Disability Services Offices at Universities within the State System of Higher Education; Bureau of Special Education	341
Agency 5	Para-transit	Para-transit providers	291
	Recruitment Centers	Armed Services Recruitment Centers	9
	PennDOT COA transfers	Transferred from other counties due to PennDOT changes of address.	103,962

COMMONWEALTH OF PENNSYLVANIA
TOTAL VOTER REGISTRATION APPLICATIONS BY NON-AGENCY SOURCES IN 2014

COUNTY NAME	In Person	PennDOT	Mail	Rcrtmnt Centers	VR Drives	PennDOT COA (Transfers)	Other (Transfers)
ADAMS	70	2,250	1,112	0	21	948	5
ALLEGHENY	648	21,831	12,140	0	1,977	6,804	2,341
ARMSTRONG	64	950	530	0	0	527	110
BEAVER	140	2,662	1,427	2	11	1,411	197
BEDFORD	28	611	605	0	0	245	7
BERKS	286	7,074	4,161	1	116	3,205	614
BLAIR	141	1,854	1,296	0	0	750	322
BRADFORD	102	878	337	0	123	254	77
BUCKS	190	12,425	6,356	0	300	5,925	2
BUTLER	45	3,582	1,930	0	370	2,229	37
CAMBRIA	195	1,666	993	3	294	958	124
CAMERON	19	37	13	0	11	37	26
CARBON	0	1,033	760	0	0	844	44
CENTRE	99	2,426	1,200	0	1,670	1,115	555
CHESTER	321	9,449	5,801	0	626	5,257	30
CLARION	75	514	160	0	118	346	19
CLEARFIELD	61	1,110	794	0	0	619	289
CLINTON	184	459	390	0	0	331	20
COLUMBIA	79	1,017	932	0	1	525	75
CRAWFORD	270	1,160	565	0	0	716	96
CUMBERLAND	185	4,506	2,763	0	438	3,369	131
DAUPHIN	223	5,081	3,092	0	53	3,135	33
DELAWARE	165	9,816	9,743	0	1,717	5,667	253
ELK	36	343	215	0	123	178	68
ERIE	403	5,047	3,124	3	259	903	14
FAYETTE	143	2,012	1,143	0	0	827	224
FOREST	26	99	24	0	0	91	3
FRANKLIN	299	2,854	716	0	359	832	167
FULTON	34	194	148	0	0	106	0
GREENE	77	683	227	0	46	189	95
HUNTINGDON	137	479	494	0	0	385	55
INDIANA	505	997	294	0	0	509	0
JEFFERSON	65	626	589	0	1	394	19
JUNIATA	52	302	129	0	41	215	50

COUNTY NAME	In Person	PennDOT	Mail	Rcrtmnt Centers	VR Drives	PennDOT COA (Transfers)	Other (Transfers)
LACKAWANNA	313	2,957	1,465	0	474	1,387	158
LANCASTER	168	10,007	5,895	0	60	3,863	476
LAWRENCE	3	1,202	844	0	0	563	5
LEBANON	255	2,140	1,347	0	36	1,539	233
LEHIGH	217	7,669	4,126	0	273	3,972	358
LUZERNE	188	4,536	2,316	0	40	1,642	414
LYCOMING	186	1,828	771	0	323	944	207
MCKEAN	83	762	332	0	0	223	26
MERCER	121	2,188	958	0	367	775	891
MIFFLIN	177	522	434	0	117	266	60
MONROE	290	4,411	998	0	204	1,094	6
MONTGOMERY	525	14,465	9,934	0	88	10,685	929
MONTOUR	61	387	194	0	0	281	2
NORTHAMPTON	595	6,183	2,996	0	258	3,124	186
NORTHUMBERLAND	26	1,118	397	0	0	808	4
PERRY	60	663	456	0	6	524	0
PHILADELPHIA	600	28,079	15,821	0	10,951	9,306	23
PIKE	45	1,617	548	0	3	354	98
POTTER	43	307	106	0	0	143	81
SCHUYLKILL	155	1,812	868	0	321	1,003	125
SNYDER	36	385	266	0	1	403	64
SOMERSET	89	877	620	0	167	520	144
SULLIVAN	10	94	44	0	0	117	6
SUSQUEHANNA	82	543	188	0	78	253	52
TIOGA	99	654	310	0	0	278	86
UNION	151	649	275	0	0	468	53
VENANGO	108	805	318	0	48	432	63
WARREN	57	736	266	0	53	237	107
WASHINGTON	173	3,611	1,894	0	119	1,986	7
WAYNE	79	978	290	0	19	515	65
WESTMORELAND	160	5,106	2,495	0	1,160	3,230	486
WYOMING	35	353	190	0	35	330	19
YORK	638	8,665	4,613	0	883	2,851	667
PENNSYLVANIA	11,195	222,336	126,778	9	24,759	103,962	12,203

COMMONWEALTH OF PENNSYLVANIA
TOTAL VOTER REGISTRATION APPLICATIONS BY PUBLIC ASSISTANCE AGENCIES IN 2014

COUNTY NAME	Agency A	Agency B	Agency C	Agency D	Agency 1	Agency 2	Agency 3	Agency 4	Agency 5	Agency Total
ADAMS	21	2	183	0	0	0	0	0	0	206
ALLEGHENY	69	71	6,271	275	14	93	184	134	11	7,122
ARMSTRONG	5	0	281	1	0	3	7	0	0	297
BEAVER	50	28	855	90	0	3	0	0	0	1,026
BEDFORD	3	1	136	0	1	1	0	11	0	153
BERKS	25	7	2,596	42	1	7	3	25	40	2,746
BLAIR	11	5	520	0	1	1	0	0	0	538
BRADFORD	10	1	127	0	0	5	0	0	1	144
BUCKS	7	20	1,156	25	1	2	16	1	10	1,238
BUTLER	1	5	332	20	0	1	7	1	0	367
CAMBRIA	8	3	838	0	1	6	0	3	0	859
CAMERON	4	0	40	0	0	0	0	0	0	44
CARBON	0	0	157	0	0	0	0	0	0	157
CENTRE	14	11	234	69	0	1	2	2	6	339
CHESTER	14	11	876	23	0	7	6	20	3	960
CLARION	9	3	155	19	0	1	0	0	1	188
CLEARFIELD	13	5	357	15	0	3	0	0	0	393
CLINTON	8	0	70	0	0	11	0	0	0	89
COLUMBIA	18	4	81	2	0	1	0	5	0	111
CRAWFORD	14	34	342	1	0	6	0	0	1	398
CUMBERLAND	6	10	584	19	0	6	6	0	1	632
DAUPHIN	38	21	1,095	0	0	1	2	0	0	1,157
DELAWARE	16	12	1,984	78	0	14	9	3	10	2,126
ELK	6	1	86	2	0	0	0	0	2	97
ERIE	59	16	1,700	0	1	4	8	6	0	1,794
FAYETTE	7	5	442	8	0	12	3	1	0	478
FOREST	0	0	17	0	1	0	0	0	0	18
FRANKLIN	15	9	394	4	2	19	0	0	0	443
FULTON	4	0	73	0	0	0	0	0	0	77
GREENE	5	3	95	0	0	0	0	0	0	103
HUNTINGDON	0	1	117	0	0	2	1	0	0	121
INDIANA	6	0	80	3	0	0	1	0	0	90

COMMONWEALTH OF PENNSYLVANIA
TOTAL VOTER REGISTRATION APPLICATIONS BY PUBLIC ASSISTANCE AGENCIES IN 2014

COUNTY NAME	Agency A	Agency B	Agency C	Agency D	Agency 1	Agency 2	Agency 3	Agency 4	Agency 5	Agency Total
JEFFERSON	2	3	113	0	0	1	0	1	0	120
JUNIATA	1	1	68	5	0	1	0	0	0	76
LACKAWANNA	8	13	1,181	7	0	9	85	2	2	1,307
LANCASTER	72	32	1,926	15	1	4	2	57	0	2,109
LAWRENCE	6	0	221	1	40	0	0	0	0	268
LEBANON	4	2	385	2	0	0	5	0	0	398
LEHIGH	84	40	2,716	3	0	8	9	2	20	2,882
LUZERNE	4	6	1,238	4	0	70	1	0	1	1,324
LYCOMING	19	7	337	0	0	13	1	4	0	381
MCKEAN	1	0	156	0	0	3	0	3	0	163
MERCER	37	11	632	2	11	0	1	13	3	710
MIFFLIN	6	7	254	1	2	3	0	0	0	273
MONROE	11	9	492	0	0	2	2	0	1	517
MONTGOMERY	77	22	1,835	31	1	22	61	3	14	2,066
MONTOUR	6	2	31	0	1	0	0	0	0	40
NORTHAMPTON	1	1	975	1	0	4	3	0	4	989
NORTHUMBERLAND	5	3	160	0	3	2	0	0	0	173
PERRY	1	1	129	1	0	0	0	7	0	139
PHILADELPHIA	84	32	25,772	195	6	80	15	24	138	26,346
PIKE	0	10	135	1	0	0	0	0	0	146
POTTER	13	2	49	0	0	1	0	0	0	65
SCHUYLKILL	6	1	645	1	0	32	13	1	3	702
SNYDER	0	1	66	3	0	0	0	0	0	70
SOMERSET	1	4	283	0	1	1	0	0	0	290
SULLIVAN	0	0	19	0	0	0	0	0	0	19
SUSQUEHANNA	3	1	108	1	2	0	3	0	0	118
TIOGA	3	2	110	0	1	2	0	0	0	118
UNION	1	7	104	3	0	0	0	0	0	115
VENANGO	1	2	277	1	1	10	0	0	10	302
WARREN	6	7	134	0	0	1	3	0	3	154
WASHINGTON	0	0	369	0	0	0	0	0	0	369
WAYNE	4	5	159	2	0	10	0	1	2	183
WESTMORELAND	49	46	1,086	24	8	10	9	3	4	1,239
WYOMING	5	1	80	0	0	1	0	0	0	87
YORK	20	9	1,963	13	1	19	1	8	0	2,034
PENNSYLVANIA	1,007	579	66,482	1,013	102	519	469	341	291	5

COMMONWEALTH OF PENNSYLVANIA
NEW REGISTRATION APPLICATIONS BY NON-AGENCY SOURCES IN 2014

COUNTY NAME	In Person	PennDOT	Mail	Rcrtmnt Centers	VR Drives	PennDOT COA (Transfers)	Other (Transfers)
ADAMS	64	1,759	1,006	0	18	887	5
ALLEGHENY	586	18,359	10,670	0	1,695	6,494	2,017
ARMSTRONG	61	690	476	0	0	509	72
BEAVER	131	2,090	1,265	2	10	1,379	182
BEDFORD	28	534	454	0	0	237	5
BERKS	266	5,711	3,738	0	96	3,062	566
BLAIR	137	1,296	1,152	0	0	732	297
BRADFORD	99	722	330	0	118	244	74
BUCKS	183	9,517	5,863	0	293	5,780	2
BUTLER	44	3,474	1,792	0	353	2,207	34
CAMBRIA	182	1,395	894	3	243	915	121
CAMERON	19	35	13	0	11	35	26
CARBON	0	793	675	0	0	825	41
CENTRE	92	2,110	1,106	0	1,504	1,082	521
CHESTER	300	7,828	5,298	0	578	5,140	29
CLARION	73	412	149	0	110	329	16
CLEARFIELD	61	805	683	0	0	575	253
CLINTON	179	343	352	0	0	327	20
COLUMBIA	74	750	844	0	1	509	71
CRAWFORD	267	1,135	556	0	0	706	95
CUMBERLAND	174	3,695	2,460	0	395	3,249	94
DAUPHIN	206	3,859	2,749	0	48	3,068	30
DELAWARE	150	7,318	7,375	0	886	5,499	219
ELK	34	263	194	0	112	167	55
ERIE	387	4,754	2,844	2	241	890	14
FAYETTE	136	1,722	1,024	0	0	752	194
FOREST	24	54	21	0	0	82	3
FRANKLIN	279	2,465	649	0	308	796	156
FULTON	33	144	127	0	0	101	0
GREENE	74	452	195	0	35	181	83
HUNTINGDON	129	340	453	0	0	371	51
INDIANA	505	973	292	0	0	498	0
JEFFERSON	41	453	488	0	1	388	16
JUNIATA	48	202	118	0	34	208	47

COUNTY NAME	In Person	PennDOT	Mail	Rcrtmnt Centers	VR Drives	PennDOT COA (Transfers)	Other (Transfers)
LACKAWANNA	289	2,345	1,351	0	415	1,337	139
LANCASTER	154	7,783	5,082	0	58	3,769	159
LAWRENCE	3	870	725	0	0	545	5
LEBANON	240	1,601	1,208	0	34	1,484	155
LEHIGH	204	6,056	3,507	0	213	3,839	253
LUZERNE	183	4,499	2,221	0	35	1,629	368
LYCOMING	175	1,569	718	0	280	918	197
MCKEAN	77	517	289	0	0	214	25
MERCER	113	2,002	849	0	305	750	654
MIFFLIN	170	362	249	0	105	224	60
MONROE	270	4,305	912	0	185	1,027	3
MONTGOMERY	470	10,893	8,957	0	78	10,513	690
MONTOUR	58	248	166	0	0	266	0
NORTHAMPTON	575	5,059	2,644	0	220	3,040	179
NORTHUMBERLAND	25	860	357	0	0	799	4
PERRY	59	526	396	0	5	491	0
PHILADELPHIA	545	21,915	13,955	0	9,174	9,086	21
PIKE	44	1,292	482	0	3	343	52
POTTER	41	205	99	0	0	136	79
SCHUYLKILL	154	1,466	842	0	288	975	121
SNYDER	35	302	239	0	1	396	55
SOMERSET	86	704	594	0	140	499	92
SULLIVAN	10	70	41	0	0	105	4
SUSQUEHANNA	75	458	171	0	69	242	49
TIOGA	96	486	286	0	0	272	77
UNION	150	648	266	0	0	460	49
VENANGO	99	582	284	0	38	419	50
WARREN	57	733	265	0	53	237	107
WASHINGTON	160	2,790	1,704	0	105	1,926	7
WAYNE	76	808	263	0	18	478	60
WESTMORELAND	156	5,071	2,438	0	1,112	3,140	480
WYOMING	33	270	176	0	31	307	11
YORK	613	6,949	4,206	0	763	2,794	609
PENNSYLVANIA	10,561	180,696	112,247	7	20,818	100,884	10,223

COMMONWEALTH OF PENNSYLVANIA
NEW VOTER REGISTRATION APPLICATIONS BY PUBLIC ASSISTANCE AGENCIES IN 2014

COUNTY NAME	Agency A	Agency B	Agency C	Agency D	Agency 1	Agency 2	Agency 3	Agency 4	Agency 5	Agency Total
ADAMS	19	2	120	0	0	0	0	0	0	141
ALLEGHENY	59	66	4,335	259	13	75	152	126	10	5,095
ARMSTRONG	3	0	211	1	0	1	5	0	0	221
BEAVER	45	23	572	85	0	3	0	0	0	728
BEDFORD	3	1	114	0	1	1	0	10	0	130
BERKS	21	5	1,750	40	1	6	3	23	34	1,883
BLAIR	10	5	340	0	1	1	0	0	0	357
BRADFORD	10	1	119	0	0	5	0	0	1	136
BUCKS	7	19	932	25	1	2	16	1	8	1,011
BUTLER	1	4	294	20	0	1	7	1	0	328
CAMBRIA	7	3	528	0	0	5	0	3	0	546
CAMERON	4	0	28	0	0	0	0	0	0	32
CARBON	0	0	91	0	0	0	0	0	0	91
CENTRE	11	9	165	67	0	1	2	2	5	262
CHESTER	14	10	599	21	0	4	6	19	2	675
CLARION	9	3	123	17	0	1	0	0	1	154
CLEARFIELD	12	5	219	14	0	3	0	0	0	253
CLINTON	5	0	53	0	0	10	0	0	0	68
COLUMBIA	18	4	75	2	0	1	0	5	0	105
CRAWFORD	14	34	338	1	0	6	0	0	1	394
CUMBERLAND	5	10	439	16	0	6	5	0	1	482
DAUPHIN	30	21	704	0	0	1	2	0	0	758
DELAWARE	12	6	1,343	75	0	11	8	2	8	1,465
ELK	6	1	43	2	0	0	0	0	0	52
ERIE	54	16	1,439	0	1	3	8	5	0	1,526
FAYETTE	7	4	300	6	0	9	3	1	0	330
FOREST	0	0	14	0	1	0	0	0	0	15
FRANKLIN	13	8	267	4	2	16	0	0	0	310
FULTON	4	0	58	0	0	0	0	0	0	62
GREENE	5	2	60	0	0	0	0	0	0	67
HUNTINGDON	0	1	93	0	0	1	1	0	0	96
INDIANA	6	0	80	3	0	0	1	0	0	90
JEFFERSON	2	3	94	0	0	0	0	1	0	100
JUNIATA	1	1	48	4	0	0	0	0	0	54
LACKAWANNA	8	12	818	7	0	9	81	2	2	939

COMMONWEALTH OF PENNSYLVANIA
NEW VOTER REGISTRATION APPLICATIONS BY PUBLIC ASSISTANCE AGENCIES IN 2014

COUNTY NAME	Agency A	Agency B	Agency C	Agency D	Agency 1	Agency 2	Agency 3	Agency 4	Agency 5	Agency Total
LANCASTER	71	26	1,332	11	1	4	2	55	0	1,502
LAWRENCE	6	0	156	1	39	0	0	0	0	202
LEBANON	3	2	355	2	0	0	5	0	0	367
LEHIGH	61	31	1,538	2	0	5	8	2	12	1,659
LUZERNE	4	6	1,132	4	0	62	1	0	1	1,210
LYCOMING	17	7	232	0	0	12	1	4	0	273
MCKEAN	1	0	110	0	0	3	0	3	0	117
MERCER	28	9	454	1	10	0	1	11	2	516
MIFFLIN	6	6	204	1	2	3	0	0	0	222
MONROE	9	8	379	0	0	2	2	0	1	401
MONTGOMERY	67	20	1,364	27	1	21	53	3	13	1,569
MONTOUR	5	2	26	0	1	0	0	0	0	34
NORTHAMPTON	1	0	648	1	0	3	3	0	3	659
NORTHUMBERLAND	5	3	121	0	2	2	0	0	0	133
PERRY	1	1	98	1	0	0	0	7	0	108
PHILADELPHIA	64	23	18,893	135	3	62	14	22	99	19,315
PIKE	0	9	101	1	0	0	0	0	0	111
POTTER	11	2	45	0	0	1	0	0	0	59
SCHUYLKILL	6	1	532	1	0	31	13	1	3	588
SNYDER	0	1	49	3	0	0	0	0	0	53
SOMERSET	1	3	193	0	1	0	0	0	0	198
SULLIVAN	0	0	16	0	0	0	0	0	0	16
SUSQUEHANNA	1	1	55	1	2	0	3	0	0	63
TIOGA	2	2	77	0	1	2	0	0	0	84
UNION	1	7	92	2	0	0	0	0	0	102
VENANGO	0	2	184	1	0	9	0	0	10	206
WARREN	6	7	125	0	0	1	3	0	3	145
WASHINGTON	0	0	298	0	0	0	0	0	0	298
WAYNE	4	5	103	2	0	8	0	1	1	124
WESTMORELAND	45	46	1,019	24	8	9	7	3	3	1,164
WYOMING	5	1	56	0	0	1	0	0	0	63
YORK	19	8	1,298	11	1	14	1	8	0	1,360
PENNSYLVANIA	875	518	48,091	901	93	437	417	321	224	51,877

Appendix D

Summary of data relative to list maintenance activities in the counties.

List maintenance activities include:

- Confirmation Mailings
- National Change of Address Program
- PennDOT Change of Address reports
- 5 Year Notice Mailings
- Death Notifications from the Department of Health

(The “motor voter” litigation settlement agreement permits the counties to send out five-year notices in accordance with Section 1901 (b)(3) of Act 3.)

In some instances the five-year notices were mailed in the prior calendar year and the responses to the notice received in 2013.

COMMONWEALTH OF PENNSYLVANIA
VOTER REGISTRATION
LIST MAINTENANCE ACTIVITIES
MANDATED VOTER REMOVAL PROGRAMS
2014

Mass Confirmation Mailing

County Name	Notices Mailed	Return By Individual	Returned By Post Office	Marked InActive
ADAMS	0	0	0	0
ALLEGHENY	0	0	0	0
ARMSTRONG	0	0	0	0
BEAVER	0	0	0	0
BEDFORD	0	0	0	0
BERKS	0	0	0	0
BLAIR	0	0	0	0
BRADFORD	0	0	0	0
BUCKS	0	0	0	0
BUTLER	9	0	0	0
CAMBRIA	0	0	0	0
CAMERON	0	0	0	0
CARBON	0	0	0	0
CENTRE	0	0	0	0
CHESTER	1	0	0	0
CLARION	0	0	0	0
CLEARFIELD	1	0	0	0
CLINTON	0	0	0	0
COLUMBIA	0	0	0	0
CRAWFORD	0	0	0	0
CUMBERLAND	0	0	0	0
DAUPHIN	0	0	0	0
DELAWARE	0	0	0	0
ELK	0	0	0	0
ERIE	0	0	0	0
FAYETTE	0	0	0	0
FOREST	0	0	0	0
FRANKLIN	1	0	0	0
FULTON	0	0	0	0
GREENE	0	0	0	0
HUNTINGDON	0	0	0	0
INDIANA	0	0	0	0
JEFFERSON	0	0	0	0

National Change of Address

Notices Mailed	Returned By Individual	Returned By Post Office	Marked InActive	Cancelled Out Of County	Cancelled Out Of State
1,258	228	49	35	34	75
19,540	5,211	662	9,622	243	1,230
699	122	521	346	20	0
2,206	672	48	849	52	0
545	265	29	18	29	0
3,944	656	211	1,999	52	153
1,208	175	33	30	25	0
837	150	20	523	18	0
8,006	185	163	37	205	1,019
1,740	835	63	1,082	80	0
1,267	205	70	701	17	44
102	18	24	12	0	6
660	276	50	40	53	0
1,854	377	56	1,113	30	167
7,620	1,860	138	3,619	127	765
367	146	13	129	13	0
835	55	685	365	1	0
442	106	12	220	10	0
518	133	20	197	17	0
1,017	248	38	451	35	79
3,454	697	85	59	59	0
4,345	480	0	0	108	0
6,683	1,068	267	3,864	150	0
322	80	36	119	14	0
6,374	1,383	76	53	35	0
1,650	33	14	1,027	2	1
72	20	5	4	4	0
1,949	614	39	896	37	0
170	67	5	4	13	0
465	154	44	19	14	0
429	83	55	36	5	0
845	145	24	3	19	1
231	74	14	12	1	0

COMMONWEALTH OF PENNSYLVANIA
VOTER REGISTRATION
LIST MAINTENANCE ACTIVITIES
MANDATED VOTER REMOVAL PROGRAMS
2014

Mass Confirmation Mailing

County Name	Notices Mailed	Return By Individual	Returned By Post Office	Marked InActive
JUNIATA	0	0	0	0
LACKAWANNA	0	0	0	0
LANCASTER	0	0	0	0
LAWRENCE	0	0	0	0
LEBANON	0	0	0	0
LEHIGH	0	0	0	0
LUZERNE	0	0	0	0
LYCOMING	0	0	0	0
MCKEAN	0	0	0	0
MERCER	0	0	0	0
MIFFLIN	0	0	0	0
MONROE	0	0	0	0
MONTGOMERY	0	0	0	0
MONTOUR	0	0	0	0
NORTHAMPTON	0	0	0	0
NORTHUMBERLAND	0	0	0	0
PERRY	0	0	0	0
PHILADELPHIA	0	0	0	0
PIKE	0	0	0	0
POTTER	0	0	0	0
SCHUYLKILL	0	0	0	0
SNYDER	0	0	0	0
SOMERSET	0	0	0	0
SULLIVAN	0	0	0	0
SUSQUEHANNA	0	0	0	0
TIOGA	0	0	0	0
UNION	0	0	0	0
VENANGO	0	0	0	0
WARREN	0	0	0	0
WASHINGTON	0	0	0	0
WAYNE	0	0	0	0
WESTMORELAND	0	0	0	0
WYOMING	0	0	0	0
YORK	0	0	0	0
PENNSYLVANIA	12	0	0	0

National Change of Address

Notices Mailed	Returned By Individual	Returned By Post Office	Marked InActive	Cancelled Out Of County	Cancelled Out Of State
144	21	5	74	5	0
2,871	530	160	1,746	49	110
6,665	1,879	241	3,556	152	0
1,020	260	31	459	31	0
1,697	533	57	42	56	0
4,120	571	235	2,592	73	0
0	0	0	0	0	0
1,362	460	9	600	33	0
529	109	13	9	6	30
1,627	19	1,531	1,085	1	0
395	107	7	100	4	16
2,096	300	142	90	31	0
7,596	3,731	910	4,639	553	0
98	2	46	75	0	0
8,666	1,109	1,909	1,085	97	0
975	90	7	6	20	0
536	107	87	333	18	0
22,058	3,946	0	13,953	1,440	0
813	136	57	546	7	0
201	70	2	59	5	0
1,715	564	29	769	51	0
697	141	100	85	18	0
755	173	37	434	13	0
97	15	18	18	3	0
438	147	20	196	16	0
574	109	0	316	5	0
443	179	9	186	17	0
524	107	205	132	10	0
607	110	27	268	9	0
1,738	241	35	1,233	22	0
586	221	8	180	23	65
4,233	1,536	175	1,943	140	1
238	56	2	0	12	0
5,986	847	740	3,690	82	237
163,754	35,247	10,423	67,983	4,524	3,999

COMMONWEALTH OF PENNSYLVANIA
VOTER REGISTRATION LIST MAINTENANCE ACTIVITIES
FIVE YEAR NOTICE AND PENNDOT CHANGE OF ADDRESS
2014

Five Year Notices

COUNTY NAME	Notices Mailed	Recipients Who Voted	Recipients who Responded (No Move)	Recipients who Responded (Moved within County)	Re-Registered within County	Cancelled-Re-Registered
ADAMS	3,252	145	498	7	3	0
ALLEGHENY	0	566	3	0	810	0
ARMSTRONG	1,408	71	200	3	41	0
BEAVER	5,438	240	1,165	31	214	0
BEDFORD	1,176	106	164	2	2	0
BERKS	14,528	609	2,039	55	416	0
BLAIR	3,906	130	519	40	1	0
BRADFORD	1,442	55	153	42	13	0
BUCKS	25,741	1,034	4,928	208	404	1
BUTLER	5,902	243	1,144	33	53	0
CAMBRIA	4,207	191	554	7	89	0
CAMERON	194	7	17	1	2	0
CARBON	2,069	114	433	9	25	0
CENTRE	13,052	195	474	18	61	0
CHESTER	15,750	629	2,052	63	336	0
CLARION	2,037	35	257	0	22	0
CLEARFIELD	1,703	99	246	10	1	0
CLINTON	2,002	48	26	0	10	0
COLUMBIA	3,020	132	226	8	18	0
CRAWFORD	3,393	182	536	2	84	0
CUMBERLAND	9,669	42	0	1	170	0
DAUPHIN	12,777	362	799	0	3	0
DELAWARE	26,114	825	2,418	91	5	0
ELK	1,459	45	247	2	2	0
ERIE	3,359	217	275	5	3	0
FAYETTE	7,112	248	980	51	103	0
FOREST	152	1	8	1	0	0
FRANKLIN	3,633	143	902	19	2	0
FULTON	0	4	0	0	2	0
GREENE	1,199	56	238	8	27	0
HUNTINGDON	0	44	5	1	3	0
INDIANA	3,591	125	307	4	0	0
JEFFERSON	1,187	62	208	5	0	0

PennDOT Changes of Address

Moved within County	Moved Out of County	Total
1,976	859	2,835
45,480	7,336	52,816
975	598	1,573
3,469	1,236	4,705
1,068	303	1,371
12,810	3,172	15,982
3,169	758	3,927
1,523	276	1,799
14,286	5,665	19,951
5,442	1,744	6,186
3,402	1,166	4,568
80	35	115
1,158	762	1,920
3,150	1,315	4,465
11,320	4,963	16,283
610	393	1,003
1,424	642	2,066
954	378	1,332
1,246	595	1,841
2,494	713	3,207
6,059	2,531	8,590
9,897	3,395	13,292
12,533	5,463	17,996
658	192	850
10,696	1,058	11,754
3,191	814	4,005
115	88	203
3,420	737	4,157
294	98	392
736	319	1,055
971	379	1,350
1,663	707	2,370
924	431	1,355

Address Verification Notices

Notices Mailed	Responses
3	0
13,954	1,108
521	0
1,447	256
0	0
2,380	20
4,075	88
806	22
1,069	62
1,380	8
1,210	98
257	19
14	1
1,635	19
7,192	424
199	8
787	102
615	21
825	89
2,051	203
313	20
0	0
7,434	388
305	45
402	11
2,857	141
5	0
1,148	93
52	7
356	45
121	11
869	77
3	0

Total Files Marked Inactive
3,313
54,063
3,518
7,240
4,043
20,719
4,106
2,480
18,662
8,189
5,901
417
3,663
22,346
19,712
2,311
8,944
3,021
3,468
5,834
10,743
14,772
41,143
1,690
13,796
10,171
149
9,087
767
2,384
3,715
2,779
4,693

COMMONWEALTH OF PENNSYLVANIA
VOTER REGISTRATION LIST MAINTENANCE ACTIVITIES
FIVE YEAR NOTICE AND PENNDOT CHANGE OF ADDRESS
2014

Five Year Notices

COUNTY NAME	Notices Mailed	Recipients Who Voted	Recipients who Responded (No Move)	Recipients who Responded (Moved within County)	Re-Registered within County	Cancelled-Re-Registered
JUNIATA	382	13	38	9	0	0
LACKAWANNA	8,062	279	943	40	91	0
LANCASTER	17,717	833	2,655	101	336	0
LAWRENCE	3,265	128	521	3	0	0
LEBANON	4,126	192	1,009	33	0	0
LEHIGH	13,299	414	1,638	37	329	0
LUZERNE	0	170	4	1	149	0
LYCOMING	3,529	138	794	20	110	0
MCKEAN	1,614	44	252	14	2	0
MERCER	3,781	187	579	8	99	0
MIFFLIN	1,151	52	131	5	17	0
MONROE	8,253	207	226	0	116	0
MONTGOMERY	8,674	1,243	3,322	108	509	1
MONTOUR	1,665	36	153	1	0	0
NORTHAMPTON	16,899	380	1,257	36	260	0
NORTHUMBERLAND	0	30	0	0	2	0
PERRY	690	48	117	0	16	0
PHILADELPHIA	72,779	3,662	4,943	199	28	0
PIKE	3,662	89	196	11	24	0
POTTER	370	23	93	3	3	0
SCHUYLKILL	4,097	181	943	39	110	0
SNYDER	1,299	50	247	3	4	0
SOMERSET	2,212	107	351	12	0	0
SULLIVAN	0	0	0	0	0	0
SUSQUEHANNA	616	24	63	16	0	0
TIOGA	2,141	84	251	17	1	0
UNION	1,839	48	180	6	13	0
VENANGO	1,490	74	389	13	53	0
WARREN	1,409	83	124	3	0	0
WASHINGTON	6,817	297	374	4	12	0
WAYNE	1,809	50	360	15	21	0
WESTMORELAND	12,634	550	2,568	128	152	0
WYOMING	358	22	59	2	13	0
YORK	4,506	771	426	3	379	0
PENNSYLVANIA	391,617	17,514	47,227	1,617	5,774	2

PennDOT Changes of Address

Moved within County	Moved Out of County	Total
502	218	720
6,000	1,322	7,322
16,272	3,150	19,422
1,992	516	2,508
3,305	1,281	4,586
10,060	3,653	13,713
9,491	1,862	11,353
2,949	859	3,808
1,034	204	1,238
3,070	736	3,806
896	279	1,175
7,169	1,340	8,509
18,426	9,386	26,027
234	13	247
6,195	3,142	9,337
1,522	927	2,449
771	501	1,272
46,327	10,795	71,691
1,525	475	2,000
339	179	518
3,110	1,099	4,209
673	357	1,030
1,827	560	2,387
148	74	222
532	300	832
942	315	1,257
787	481	1,268
1,190	437	1,627
1,193	282	1,475
4,990	1,691	6,681
739	421	1,160
6,948	2,314	9,262
812	309	1,121
12,581	2,966	15,547
341,744	101,565	455,093

Address Verification Notices

Notices Mailed	Responses
143	15
2,296	7
6,982	473
905	82
3,129	9
3,069	0
224	11
1,021	10
0	0
1,995	107
1,050	48
0	0
7,369	808
332	82
0	0
3	0
424	17
20,133	1,531
646	0
103	22
1,342	33
283	25
551	0
17	0
266	12
472	7
257	2
497	30
437	58
1,578	95
241	17
2,623	0
217	11
7,478	68
120,368	6,966

Total Files Marked Inactive
619
10,517
32,895
9,857
7,210
18,300
5,706
4,277
2,666
9,415
3,192
8,047
45,289
1,718
21,969
5,389
1,309
146,075
1,828
499
4,829
2,233
4,791
21
1,191
2,755
1,999
2,175
5,477
20,254
2,023
24,641
0
32,157
759,162

COMMONWEALTH OF PENNSYLVANIA
 VOTER REGISTRATION LIST MAINTENANCE ACTIVITIES
 CANCELLATION OF VOTER REGISTRATION
 2014

ACTIVE VOTER REGISTRATIONS CANCELLED

COUNTY NAME	VOTER'S REQUEST	VOTER'S DEATH	OTHER MOVE CONFIRM	VOTER REMOVAL PROGRAM	CANVASS	PENNDOT MOVE CONFIRM	TOTAL
ADAMS	9	502	569	25	0	563	1,676
ALLEGHENY	54	8,006	7,329	550	0	3,737	19,702
ARMSTRONG	3	374	194	13	0	562	1,147
BEAVER	39	1,304	512	45	0	1,065	2,966
BEDFORD	1	324	353	42	0	128	872
BERKS	9	1,931	745	52	0	3,131	5,879
BLAIR	6	868	404	40	0	617	1,939
BRADFORD	14	355	153	19	0	192	759
BUCKS	63	3,370	5,790	187	0	1,915	11,334
BUTLER	22	886	1,258	72	0	1,114	3,367
CAMBRIA	8	1,222	709	25	0	594	2,559
CAMERON	3	36	34	7	0	26	107
CARBON	5	306	246	48	0	618	1,223
CENTRE	27	457	1,625	25	0	671	2,807
CHESTER	81	2,176	438	118	0	6,169	9,015
CLARION	1	250	88	23	0	395	758
CLEARFIELD	5	438	32	3	0	711	1,132
CLINTON	0	162	194	8	0	273	638
COLUMBIA	2	374	705	75	3	306	2,004
CRAWFORD	14	569	363	110	1	511	1,570
CUMBERLAND	12	1,088	1,281	51	0	2,292	4,727
DAUPHIN	4	1,376	1,916	104	0	2,565	6,031
DELAWARE	44	3,221	2,286	102	0	4,266	9,934
ELK	3	218	104	15	0	127	468
ERIE	23	1,579	1,119	49	0	888	3,669
FAYETTE	37	907	231	7	0	691	1,874
FOREST	0	41	22	5	0	88	157
FRANKLIN	23	777	418	34	0	687	1,940
FULTON	1	79	56	12	0	86	234
GREENE	11	222	131	17	0	222	604
HUNTINGDON	0	255	195	4	0	308	773
INDIANA	13	477	970	484	0	464	2,445
JEFFERSON	5	246	314	2	0	206	773

INACTIVE VOTER REGISTRATIONS CANCELLED

VOTER'S REQUEST	VOTER'S DEATH	OTHER MOVE CONFIRM	VOTER REMOVAL PROGRAM	PENNDOT MOVE CONFIRM	RESPONSE TO MAILING	CANVASS	5 YEAR NOTICE	TOTAL
1	57	62	1,438	38	0	0	55	1,652
3	707	622	1	243	85	0	9	1,670
2	73	36	3	54	3	0	25	196
5	184	136	3,784	156	126	0	127	4,518
0	92	81	8	17	3	0	9	234
1	337	251	8,681	492	6	0	196	9,965
6	146	85	10,970	51	17	0	72	11,348
4	78	40	4,498	37	8	0	29	4,702
17	603	531	5	203	134	0	853	2,347
2	155	300	3,711	160	95	0	151	4,576
16	213	123	2,751	94	51	0	67	3,316
1	7	53	402	6	7	0	0	477
3	72	35	0	56	6	0	57	229
6	89	617	4	183	7	0	282	1,188
5	333	350	15,268	670	214	0	415	17,262
3	46	60	39	53	8	0	34	244
0	147	69	0	108	32	0	18	374
0	47	80	2,216	66	19	0	0	2,428
1	47	201	862	27	71	13	25	2,166
0	98	133	465	89	86	0	82	954
2	7	57	0	53	3	0	0	122
2	119	185	3,649	63	24	0	34	4,083
13	532	682	4	652	184	0	396	2,482
2	37	16	410	31	15	0	40	551
6	137	108	594	76	3	0	38	966
1	193	105	2,776	114	30	0	97	3,317
0	6	2	8	0	0	0	4	20
3	172	72	1	94	88	0	93	523
0	9	6	0	5	22	0	0	44
11	47	16	1	44	13	0	18	150
0	27	41	0	12	6	0	0	86
8	48	79	269	33	80	0	1,451	1,973
1	75	58	0	27	1	0	17	179

COMMONWEALTH OF PENNSYLVANIA
VOTER REGISTRATION LIST MAINTENANCE ACTIVITIES
CANCELLATION OF VOTER REGISTRATION
2014

ACTIVE VOTER REGISTRATIONS CANCELLED

COUNTY NAME	VOTER'S REQUEST	VOTER'S DEATH	OTHER MOVE CONFIRM	VOTER REMOVAL PROGRAM	CANVASS	PENNDOT MOVE CONFIRM	TOTAL
JUNIATA	2	171	149	5	0	125	453
LACKAWANNA	13	1,852	684	49	0	945	3,543
LANCASTER	22	2,292	1,298	122	0	2,668	6,419
LAWRENCE	13	717	295	29	0	443	1,523
LEBANON	11	748	190	58	1	1,387	2,400
LEHIGH	14	1,763	1,783	63	1	2,712	6,351
LUZERNE	9	2,442	812	3	0	1,516	4,787
LYCOMING	19	716	590	32	0	449	1,807
MCKEAN	0	294	68	4	0	215	584
MERCER	4	813	240	10	0	576	1,647
MIFFLIN	10	276	234	6	0	113	641
MONROE	5	740	403	424	0	1,530	3,108
MONTGOMERY	67	4,277	5,489	504	0	5,596	15,957
MONTOUR	7	107	161	13	0	0	293
NORTHAMPTON	8	1,465	1,850	96	0	2,100	5,530
NORTHUMBERLAND	9	550	388	52	3	747	1,753
PERRY	1	287	185	26	0	409	910
PHILADELPHIA	121	7,270	9,144	1,501	3	4,375	22,699
PIKE	3	481	275	62	1	362	1,187
POTTER	3	140	72	4	0	161	382
SCHUYLKILL	28	1,167	365	50	0	887	2,506
SNYDER	0	199	211	26	0	201	639
SOMERSET	4	546	77	13	0	564	1,206
SULLIVAN	9	72	65	3	0	50	199
SUSQUEHANNA	3	270	252	22	0	168	715
TIOGA	2	278	188	6	0	215	689
UNION	10	232	251	19	0	402	914
VENANGO	7	399	159	14	0	360	940
WARREN	6	285	135	34	0	241	701
WASHINGTON	7	1,135	1,344	184	0	884	3,563
WAYNE	3	348	181	23	0	380	941
WESTMORELAND	18	2,216	2,515	118	0	488	5,381
WYOMING	2	177	161	15	0	253	610
YORK	38	1,677	2,607	69	0	1,060	5,462
PENNSYLVANIA	1,020	70,798	63,605	6,032	13	68,770	211,523

INACTIVE VOTER REGISTRATIONS CANCELLED

VOTER'S REQUEST	VOTER'S DEATH	OTHER MOVE CONFIRM	VOTER REMOVAL PROGRAM	PENNDOT MOVE CONFIRM	RESPONSE TO MAILING	CANVASS	5 YEAR NOTICE	TOTAL
1	16	14	100	8	9	0	2	150
1	319	186	7,731	144	6	0	111	8,498
4	512	433	2	484	160	0	204	1,804
75	243	201	18	82	36	0	83	756
10	142	46	8	181	5	0	68	461
1	369	437	7,176	380	7	2	780	9,174
0	235	70	6,531	81	1	0	0	6,918
3	129	143	1,798	77	15	0	93	2,258
3	54	10	0	17	1	0	22	111
0	171	73	5	119	18	0	57	444
5	57	50	1	20	21	0	8	163
5	82	86	4,116	102	6	1	88	4,489
29	787	1,072	15,673	722	454	1	834	19,600
2	43	39	0	0	75	0	50	217
4	346	300	19	241	5	0	161	1,084
1	82	58	30	33	1	4	0	212
3	13	55	421	43	1	0	12	549
23	1,889	1,820	19	529	920	13	488	6,147
1	90	87	5,811	61	6	0	40	6,096
0	20	10	259	23	17	0	17	349
5	161	54	1,995	146	9	0	89	2,459
6	38	47	0	24	1	0	21	138
6	123	14	1,678	130	2	0	44	2,001
0	0	1	0	0	1	0	0	2
0	35	36	643	27	5	0	16	762
0	70	71	669	37	4	0	17	868
8	27	42	2	50	5	0	975	1,110
1	45	44	635	62	26	0	34	849
4	87	94	10	47	32	0	14	288
14	347	366	19	130	113	0	89	1,089
0	45	52	1,119	59	22	0	68	1,367
9	600	510	8	78	99	0	330	1,649
1	13	23	820	38	9	0	15	919
5	403	442	1	113	15	0	10	989
355	12,533	12,278	120,135	8,295	3,554	34	9,534	168,312

Appendix E

A summary of data for “motor voter” applications by political party.

This information is provided directly by the contracted vendor who processes the applications for the Department and PennDOT. These statistics relate to the number of individuals who applied to register to vote at a photo license center. The total number of applications provided by the contracted vendor may differ from the counties’ total applications received from PennDOT for a variety of reasons, including not having been received by the counties until the next reporting period.

COMMONWEALTH OF PENNSYLVANIA
VOTER REGISTRATION APPLICATIONS BY POLITICAL PARTY
RECEIVED AT PENNDOT LICENSE CENTERS
2014

County Name	Republican	Democratic	Libertarian	Other	Total	County Name	Republican	Democratic	Libertarian	Other	Total
ADAMS	1,021	579	57	593	2,250	LACKAWANNA	862	1,435	59	601	2,957
ALLEGHENY	5,583	10,162	562	5,525	21,832	LANCASTER	3,809	3,216	239	2,743	10,007
ARMSTRONG	430	295	28	197	950	LAWRENCE	415	463	28	296	1,202
BEAVER	943	990	77	652	2,662	LEBANON	867	700	61	512	2,140
BEDFORD	359	145	16	91	611	LEHIGH	2,033	3,373	210	2,053	7,669
BERKS	2,152	3,084	167	1,672	7,075	LUZERNE	1,314	1,960	104	1,158	4,536
BLAIR	822	559	49	424	1,854	LYCOMING	788	527	64	449	1,828
BRADFORD	392	240	32	214	878	McKEAN	320	227	23	192	762
BUCKS	4,182	4,661	280	3,383	12,506	MERCER	802	808	46	532	2,188
BUTLER	1,563	932	96	817	3,408	MIFFLIN	251	161	11	99	522
CAMBRIA	636	598	57	375	1,666	MONROE	1,096	2,033	75	1,207	4,411
CAMERON	11	14	1	11	37	MONTGOMERY	4,266	6,387	330	3,503	14,486
CARBON	327	384	31	297	1,039	MONTOUR	146	105	12	124	387
CENTRE	784	858	70	714	2,426	NORTHAMPTON	1,852	2,401	164	1,766	6,183
CHESTER	3,346	3,265	228	2,610	9,449	NORTHUMBERLAND	438	358	32	290	1,118
CLARION	250	131	16	117	514	PERRY	306	168	38	151	663
CLEARFIELD	529	336	25	220	1,110	PHILADELPHIA	3,486	18,788	344	5,436	28,054
CLINTON	185	150	12	112	459	PIKE	540	488	43	546	1,617
COLUMBIA	361	355	31	270	1,017	POTTER	152	71	15	69	307
CRAWFORD	482	358	35	285	1,160	SCHUYLKILL	735	623	50	405	1,813
CUMBERLAND	1,765	1,391	136	1,214	4,506	SNYDER	174	90	16	105	385
DAUPHIN	1,590	2,165	100	1,226	5,081	SOMERSET	441	225	25	186	877
DELAWARE	3,093	4,468	166	2,089	9,816	SULLIVAN	41	19	3	31	94
ELK	142	103	13	85	343	SUSQUEHANNA	225	158	10	150	543
ERIE	1,588	2,074	134	1,251	5,047	TIOGA	353	145	16	140	654
FAYETTE	684	901	51	376	2,012	UNION	302	179	15	153	649
FOREST	45	24	3	27	99	VENANGO	347	235	32	191	805
FRANKLIN	1,325	711	76	742	2,854	WARREN	291	224	17	204	736
FULTON	99	47	5	43	194	WASHINGTON	1,392	1,281	95	843	3,611
GREENE	251	289	12	131	683	WAYNE	415	248	17	298	978
HUNTINGDON	247	125	7	100	479	WESTMORELAND	1,978	1,829	123	1,186	5,116
INDIANA	405	334	31	227	997	WYOMING	139	103	10	101	353
JEFFERSON	309	160	14	143	626	YORK	3,466	2,749	257	2,193	8,665
JUNIATA	151	87	7	57	302	PENNSYLVANIA	70,094	92,752	5,209	54,203	222,258

Appendix F

Summary of the Department's efforts to comply with the
National Voter Registration Act of 1993.

The charts illustrate the voter registration activity at the agency level on a monthly basis. Included are the number of voter registration offers that were made and the number of offers that were declined.

COMMONWEALTH OF PENNSYLVANIA
SUMMARY OF VOTER REGISTRATIONS OFFERED FROM PREFERENCE FORM
DATA FROM NVRA AGENCIES
2014

	WIC	D.A.	County MH/ID	CAO	COOC	C&Y	HC	SSHE	Special Ed. Prg.	AAA	Para-Transit	Total
January	24,689	1,677	5,175	362,810	508	104	86	67	3	14,087	1,906	411,112
February	19,723	1,600	4,111	311,700	784	143	118	27	0	11,833	1,720	351,759
March	21,607	2,027	5,134	367,844	997	176	99	13	2	14,509	8,468	420,876
April	20,742	2,009	4,892	346,578	422	106	177	8	1	14,628	2,169	391,732
May	18,364	1,800	4,344	326,627	2,212	156	109	13	4	10,664	1,720	366,013
June	18,480	1,900	4,984	308,012	2,170	176	161	0	2	10,971	2,388	349,244
July	20,804	1,785	4,520	330,311	538	133	170	15	0	10,073	2,094	370,443
August	19,803	1,806	4,435	345,352	632	152	117	90	0	9,678	1,600	383,665
September	21,363	1,866	5,398	316,606	450	163	89	30	2	9,689	2,251	357,907
October	23,896	2,183	5,529	326,324	182	192	54	15	1	9,998	2,409	370,783
November	18,320	1,712	4,179	274,540	200	193	40	14	0	7,865	2,088	309,151
December	21,007	1,696	5,036	349,864	142	178	32	11	0	8,873	1,663	388,502
Total	248,798	22,061	57,737	3,966,568	9,237	1,872	1,252	303	15	132,868	30,476	4,471,187

WIC - Women, Infants and Children
D.A. - Disability Agencies
County MH/ID - County Mental Health and Intellectual Disabilities
CAO - County Assistance Offices
COOC - Clerk of Orphan's Court
C&Y - County Children and Youth Offices
HC - Health Care facilities
SSHE - State System of Higher Education
Special Ed. Program - Bureau of Special Education
AAA - Area Agencies on Aging

COMMONWEALTH OF PENNSYLVANIA
SUMMARY OF DECLINES FROM PREFERENCE FORM DATA FROM NVRA AGENCIES
2014

	WIC	D.A.	County MH/ID	CAO	COOC	C&Y	HC	SSHE	Special Ed. Prg.	AAA	Para-Transit	Total
January	24,152	1,546	4,640	81,588	540	86	87	66	1	10,488	265	123,459
February	19,253	1,622	3,690	63,047	858	115	111	25	-	8,696	258	97,675
March	20,921	1,954	4,615	78,262	1,060	134	110	13	1	10,212	345	117,627
April	20,028	1,963	4,321	72,509	635	75	175	8	2	10,912	293	110,921
May	17,865	1,745	3,864	65,095	2,388	147	109	12	1	8,394	304	99,924
June	17,952	1,875	4,503	64,840	2,416	147	155	-	1	8,602	279	100,770
July	20,255	1,703	3,891	67,026	929	102	162	15	-	5,393	293	99,769
August	19,259	1,827	3,845	63,535	929	131	122	81	-	6,976	300	97,005
September	20,782	1,850	4,762	65,818	631	143	105	27	1	6,871	256	101,246
October	23,171	2,100	4,850	66,015	264	148	68	12	1	7,205	301	104,135
November	17,779	1,677	3,642	54,517	278	144	48	11	-	5,585	251	83,932
December	20,458	1,661	4,408	71,982	190	164	44	13	1	6,304	179	105,404
Total	241,875	21,523	51,031	814,234	11,118	1,536	1,296	283	9	95,638	3,324	1,241,867

WIC - Women, Infants and Children
D.A. - Disability Agencies
County MH/ID - County Mental Health and Intellectual Disabilities
CAO - County Assistance Offices
COOC - Clerk of Orphan's Court
C&Y - County Children and Youth Offices
HC - Health Care facilities
SSHE - State System of Higher Education
Special Ed. Program - Bureau of Special Education
AAA - Area Agencies on Aging