

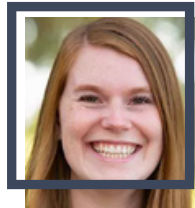
# 2025 PA FARM SHOW

## DEPARTMENT 31 - RABBITS

### MEET YOUR COMMITTEE CHAIR PERSON!



**Lia Swartz** started showing rabbits at the Pennsylvania Farm Show at a young age. A 2014 PA Fair Queen, Lia enjoys being able to immerse herself in everything rabbit related for Farm Show.



**Sarah Gregory** is a Bucks County 4-H Educator with a love for Rabbits. Beginning her career with 4-H as a youth member, Sarah has been a familiar face around Farm Show.

### ENTRY DEADLINE

**All entries must be made online using FairEntry software no later than December 1, 2024.**

**All tattoo changes must be made with the show secretary by December 31, 2024.**

**Please be sure to review all general rules and department rules prior to entering.**



PA Secretary of Agriculture, Russell C. Redding

Pennsylvania's State Fair showcases top competitors from 108 county and local fairs, and the diversity and quality of Pennsylvania's agriculture industry, the innovative people who make it thrive, and the faces of our proud past and promising future. The show offers visitors a peek into the industry that supports 593,000 Pennsylvania jobs and contributes \$132.5 billion to Pennsylvania's economy every year. See you at the PA Farm Show!

# RULES AND REGULATIONS

Links	<p>See General Rules, Regulations &amp; Health Requirements online at <a href="https://www.farmshow.pa.gov/pafarmshow/exhibit/rules-regulations">https://www.farmshow.pa.gov/pafarmshow/exhibit/rules-regulations</a></p> <p>Use Compliance Statement online at <a href="https://www.farmshow.pa.gov/pafarmshow/exhibit/forms-registration">https://www.farmshow.pa.gov/pafarmshow/exhibit/forms-registration</a></p>
Entries	<p>This is a closed entry show. <b>Entries MUST be made online by December 1, 2024.</b> Late entries will not be accepted. No exceptions. Entry fee must be paid at time entries are made. Breeder forfeits entry fee for animals scratched after December 1, 2024.</p>
Requirements	<p>This is a one-day carrying cage show. All carriers must have leak-proof bottoms. Exhibitors are responsible to have their animals to the judging table for the proper class <b>and should not be expected to be called to the table.</b></p>
Show Time	<p>The show will be held in the Large Arena and all stock must be in the area by 8:00 a.m. Judging will start at 9:00 a.m. The arena will open at 7:00 a.m.</p>
Property	<p>All entries must be the bona fide property of the exhibitor prior to the show. Otherwise, the exhibitor forfeits all entry fees, premiums, and rights to exhibit.</p>
Entry Fee	<p>No entry fee will be refunded except when an applicant withdraws her/his entry before the closing date for entries. Entry fees: \$3.50 per animal (Open or Youth); \$5.00 per meat pen; \$1.00 additional for Fur &amp; Wool Classes.</p>
Health Requirements	<p><b>Exhibitors will be required to read the Attestation Statement (last page in this premium list) and have a filled out and signed copy upon arrival with their animals.</b> Judges will eliminate any stock found to be diseased while judging. Animals in showmanship and hopping contests, as well as those on exhibit in the petting area, will also be screened for health issues throughout the week of Farm Show.</p>
Ear Markings	<p>All animals that are to be exhibited are to be permanently and legibly earmarked in the left ear. All identification of stock will be by private ear numbers.</p>

# RULES AND REGULATIONS

Tattoos	<p><b>All entries must list ear tattoo identification on the entry form. Failure to include all information on the entry blank will automatically disqualify your entry. All tattoo changes must be made with the show secretary by December 31, 2024.</b></p>
Substitutions	<p><b><u>Substitutions can be made only within the class. No exceptions.</u> Substitutions <u>must</u> be made through Sarah Gregory (267-357-8037); gregorysk94@hotmail.com by December 31, 2024. No substitutions will be honored after this date.</b></p>
ARBA Rules	<p>This is an Official ARBA Sanctioned Show, Eric Stewart, American Rabbit Breeders Association, Inc., PO Box 400, Knox, PA 16232-400, Phone: 814-297-8233, Email: info@arba.net; and will be governed by the latest revised rules of that body. The completion of an entry blank indicates acceptance of these rules and regulations. Sanction Fees: Open \$25.00; Youth \$20.00. Dues: (<i>one year</i>) Adult \$20.00; Two adult combination \$30.00; Youth \$12.00; Family, Single Adult, \$20.00 plus \$5.00 per youth; Family, \$30.00 plus \$5.00 per child; (<i>three years</i>) Adult \$50.00; Two adult combination \$75.00; Youth \$30.00; Family, Single Adult, \$50.00 plus \$10.00 per youth; Family, \$75.00 plus \$10.00 per child. Exhibitors need not be members of ARBA to enter a sanctioned show.</p>
Schedule & Requirements	<p>All Best of Breed, Best Opposite Breed, the top ten (10) Youth Meat Pens, and the first-place animal in each meat class will be cooped and on exhibit for the remainder of the Farm Show. Only a business-card-sized advertisement may be placed on the cage card. No supplemental wires, cages, etc. will be permitted to be placed on the provided cages. <b>The completion of entries indicates acceptance of this regulation. Placement awards and premiums for the exhibitor's entire entry in Department 31 will be forfeited if the required cooped animal is removed and the exhibitor will be barred for two years.</b> These animals will be released on Saturday, January 11, 2025, from 5:00-7:00 p.m. All animals MUST be removed by 7:00 p.m. Cavies are not required to be cooped for the week because of drafts and temperature changes.</p>
Natural Condition	<p>All animals must be exhibited in their natural condition. Exhibitors found violating this rule will have their animal disqualified and the remainder of their entry will be disqualified from competition and not be judged. Included in violations is dying, plucking, trimming, or any other action designed to deceive.</p>

# RULES AND REGULATIONS

ARBA Recognition	Only breeds and varieties currently recognized in the ARBA Standards of Perfection will be permitted to show.
Food and Water	Exhibitors must bring a food dish and water bottle to hang on outside of cage.
Interference	Exhibitors attempting to interfere with or influence a judge or acting in an unbecoming manner will be rejected and barred from the show with entry fees and premiums forfeited.
Cleaning	A Rabbit department delegate will clean the rabbits' cages every day. Self-cleaning is not an option. The completion of an entry blank indicates acceptance of this regulation.
Selling	There will be no selling of any rabbits/cavies throughout the duration of the Farm Show.
4-H Clubs and FFA Members	Youth/Junior classes are open to 4-H Club and FFA members. Exhibitors must have been born from 2005 through 2015 inclusive. Exhibitors must be 4-H member carrying a rabbit project under the supervision of the Pennsylvania State University Agricultural Extension Service or a dues-paying FFA member carrying a rabbit project under the supervision of Pennsylvania State University Agricultural and Cooperative Extension Service or a Vocational Agriculture Instructor and must be a member in good standing as defined by the state 4-H or FFA Office.



# SPECIAL RABBIT MEAT PEN REGULATIONS

Identification	Rabbits will be <b>permanently</b> tattooed with the youth exhibitor's private ear number.
Arrival Time	All youth rabbit meat pens must be in place by 8 a.m. on Friday, January 3, 2025. Judging will begin at 9:00 a.m.
Health Requirements	Drug free affidavits apply. Judges will eliminate any stock found to be diseased.

# JUNIOR RABBIT MEAT PEN CLASS

Limit	Each exhibitor is limited to one rabbit meat pen. In preparation for Farm Show, up to 10 rabbits may be tattooed.
Age & Weight	A meat pen consists of three rabbits of the same breed and variety (color) as recognized and accepted in the current edition of the ARBA Standards of Perfection. They may be up to 10 weeks old (70 days maximum) and must weigh a minimum of 3 1/2 lbs. and maximum of 5 1/2 lbs. individually.
Ownership	<p>3. Youth exhibitors must own the doe(s) and kits must be kindled in the owner's rabbitry October 25, 2024, or later.</p> <p>a. Owner must notify their county agent, 4-H club leader, or FFA advisor of their intent to enter a meat pen before the doe is bred.</p> <p>b. Exhibitor must notify their county agent, 4-H club leader, or FFA advisor within three days of the doe's kindling.</p> <p>c. Exhibitor must tattoo all rabbits to be grown for competition at 4 weeks of age in the presence of the extension educator, official 4-H leader or FFA advisor. Up to 10 rabbits may be tattooed. The leader, educator, or advisor must then sign the compliance statement listing the tattoo numbers.</p> <p>d. Compliance statement must be submitted by December 15, 2024, via email to farmshow.rabbits@gmail.com.</p>
Pen Entry	Pen entry form must be submitted online by December 1, 2024, with the correct entry fee.
Standards	The exhibitor will choose three rabbits to present for competition who are most uniform in weight, show the best meat characteristics, and have no disqualifications as listed in the ARBA Standards of Perfection.
Check In	Exhibitors will present their meat pen at 8:00 a.m. on Friday, January 3, 2025, to be weighed, checked for health requirements and disqualifications, and judged. Judging will be done by an ARBA licensed judge.

# JUNIOR RABBIT MEAT PEN CLASS

Junior Market Auction	The top 10 meat pens will be auctioned as part of the Junior Market Auction beginning at 10:30 a.m. on Tuesday, January 7, 2025, in the Small Arena. All rabbits selling in the Junior Market Animal Sale must be sold for slaughter through the buy-back program. <i>Please see Dept. 6 Jr Market Rules for more information about the sale.</i>
Showing	Any youth exhibiting a junior rabbit meat pen must show her/his own pen of animals. In a case where the exhibitor is physically unable to attend the show due to ill health or family tragedy, another youth exhibitor must show the meat pen of rabbits.

# REGISTRATION

See General Rules, Regulations & Health Requirements online at  
<https://www.farmshow.pa.gov/pafarmshow/exhibit/rules-regulations>

## HOW TO ENTER



Use Google Chrome or Mozilla Firefox for best results.



Register all entries for each exhibitor in the family before proceeding to payment section.



Be sure to click the SUBMIT button when you have completed your entries.



Check your email inbox for a confirmation email with a list of your entries and invoice.



Be sure you receive the second email when your entries are approved by the Farm Show.



[Step by step entry video](#)



[Step by step entry document](#)



# MEAT CLASSES

## JUDGE

TBA

## DATE/TIME

### Junior Rabbit Meat Pen Judging

Friday, January 3, 2025

9:00 a.m.

New Holland Arena

## CHART OF CLASSES - DIVISION 0001

DIVISION 0001	
<b>Youth Stewer</b>	One rabbit, 6 months of age and over, minimum weight 8 pounds
<b>Youth Roaster</b>	One rabbit, under 6 months, not less than 5.5 pounds nor over 9 pounds in weight
<b>Youth Single Fryer</b>	One rabbit, not over 10 weeks, 3.5 to 5.5 pounds weight
<b>Youth Meat Pen</b>	Three rabbits, all same breed and variety, not over 10 weeks, 3.5 to 5.5 pounds weight each rabbit
<b>Stewer</b>	One rabbit, 6 months of age and over, minimum weight 8 pounds
<b>Roaster</b>	One rabbit, under 6 months, not less than 5.5 pounds nor over 9 pounds in weight
<b>Single Fryer</b>	One rabbit, not over 10 weeks, 3.5 to 5.5 pounds weight
<b>Meat Pen</b>	Three rabbits, all same breed and variety, not over 10 weeks, 3.5 to 5.5 pounds weight each rabbit

# OPEN CLASSES - RABBIT

## JUDGE

TBA

## DATE/TIME

### Rabbit Show

Friday, January 3, 2025

9:00 a.m.

New Holland Arena

## CHART OF CLASSES - DIVISION 0002

The following breeds will be sanctioned: *(No pre-junior classes)*

CODE	BREED	VARIETY
11	American	Blue
12	American	White
21	American Fuzzy Lop	Broken
22	American Fuzzy Lop	Solid
31	American Sable	
41	Argente Brun	
51	English Angora	Colored
52	English Angora	White
61	French Angora	Colored
62	French Angora	White
71	Giant Angora	White
72	Giant Angora	Colored
81	Satin Angora	Colored
82	Satin Angora	White
91	Belgian Hare	Rufus
92	Belgian Hare	Tan
101	Beveren	Black
102	Beveren	Blue
103	Beveren	White
111	Blanc de Hotot	

CODE	BREED	VARIETY
115	Blue Holicer	
121	Britannia Petite	Black
122	Britannia Petite	Black Otter
123	Britannia Petite	Blue Eyed White
131	Britannia Petite	Broken
141	Britannia Petite	Chestnut Agouti
142	Britannia Petite	Himalayan
143	Britannia Petite	Ruby Eyed White
144	Britannia Petite	Sable Marten
145	Britannia Petite	Siamese Sable
146	Britannia Petite	Tortoise Shell Group
151	Californian	
161	Champagne D'Argent	
171	Checkered Giant	Black
172	Checkered Giant	Blue

CODE	BREED	VARIETY
181	Czech Frosty	
191	American Chinchilla	
201	Giant Chinchilla	
212	Standard Chinchilla	
221	Cinnamon	
231	Creme D'Argent	
241	Dutch	Black
242	Dutch	Blue
243	Dutch	Chinchilla
244	Dutch	Chocolate
245	Dutch	Golden
246	Dutch	Gray
247	Dutch	Lilac
248	Dutch	Steel
249	Dutch	Tortoise
261	Dwarf Hotot	
271	Dwarf Papillion	Black
272	Dwarf Papillion	Blue



# OPEN CLASSES - RABBIT

## CHART OF CLASSES - DIVISION 0002

The following breeds will be sanctioned: *(No pre-junior classes)*

CODE	BREED	VARIETY
273	Dwarf Papillion	Chocolate
274	Dwarf Papillion	Lilac
281	English Spot	Black
291	English Spot	Blue
292	English Spot	Chocolate
293	English Spot	Gold
294	English Spot	Gray
295	English Spot	Lilac
296	English Spot	Tortoise
311	Flemish Giant	Black
312	Flemish Giant	Blue
313	Flemish Giant	Fawn
314	Flemish Giant	Light Gray
315	Flemish Giant	Sandy
316	Flemish Giant	Steel Gray
317	Flemish Giant	White
331	Florida White	
341	Harlequin	Japanese
342	Harlequin	Magpie
351	Havana	Black
352	Havana	Blue
353	Havana	Broken
354	Havana	Chocolate
355	Havana	Lilac
371	Himalayan	Black
372	Himalayan	Blue
373	Himalayan	Chocolate
374	Himalayan	Lilac

CODE	BREED	VARIETY
381	Holland Lop	Broken
382	Holland Lop	Solid
391	Jersey Wooly	Agouti
392	Jersey Wooly	Broken
393	Jersey Wooly	Self
394	Jersey Wooly	Shaded
395	Jersey Wooly	Tan Pattern
396	Jersey Wooly	AOV
411	Lilac	
421	English Lop	Broken Pattern
422	English Lop	Solid Pattern
431	French Lop	Broken Pattern
432	French Lop	Solid Pattern
441	Lionhead	Chocolate
442	Lionhead	Ruby-Eyed White
443	Lionhead	Black
444	Lionhead	Seal
445	Lionhead	Siamese Sable
446	Lionhead	Tortoise
447	Lionhead	Smoke Pearl
461	Mini Lop	Broken Pattern
462	Mini Lop	Solid Pattern

CODE	BREED	VARIETY
471	Mini Rex	Amber
472	Mini Rex	Black
473	Mini Rex	Blue
474	Mini Rex	Blue-Eyed White
475	Mini Rex	Broken
476	Mini Rex	Castor
477	Mini Rex	Chinchilla
478	Mini Rex	Chocolate
479	Mini Rex	Himalayan
480	Mini Rex	Lilac
481	Mini Rex	Lynx
482	Mini Rex	Opal
483	Mini Rex	Otter
484	Mini Rex	Red
485	Mini Rex	Sable
486	Mini Rex	Sable Point
487	Mini Rex	Seal
488	Mini Rex	Silver Marten
489	Mini Rex	Smoke Pearl
490	Mini Rex	Smoke Pearl Marten
491	Mini Rex	Tortoise
492	Mini Rex	White
511	Mini Satin	Black
512	Mini Satin	Blue

# OPEN CLASSES - RABBIT

## CHART OF CLASSES - DIVISION 0002

The following breeds will be sanctioned: *(No pre-junior classes)*

CODE	BREED	VARIETY
513	Mini Satin	Broken
514	Mini Satin	Chinchilla
515	Mini Satin	Chocolate
516	Mini Satin	Chocolate Agouti
517	Mini Satin	Copper
518	Mini Satin	Himalayan
519	Mini Satin	Lilac
520	Mini Satin	Opal
521	Mini Satin	Otter
522	Mini Satin	Red
523	Mini Satin	Sable
524	Mini Satin	Siamese
525	Mini Satin	Silver Marten
526	Mini Satin	Squirrel
527	Mini Satin	Tortoise
528	Mini Satin	White
541	Netherland Dwarf	Black
542	Netherland Dwarf	Blue
543	Netherland Dwarf	Chocolate
544	Netherland Dwarf	Lilac
545	Netherland Dwarf	Blue Eye White
546	Netherland Dwarf	Ruby Eye White
547	Netherland Dwarf	Sable Point

CODE	BREED	VARIETY
548	Netherland Dwarf	Siamese Sable
549	Netherland Dwarf	Siamese Smoke Pearl
550	Netherland Dwarf	Tortoise Shell
551	Netherland Dwarf	Blue Tortoise Shell
552	Netherland Dwarf	Chestnut
553	Netherland Dwarf	Chocolate Agouti
554	Netherland Dwarf	Chinchilla
555	Netherland Dwarf	Lynx
556	Netherland Dwarf	Opal
557	Netherland Dwarf	Squirrel
558	Netherland Dwarf	Otter
559	Netherland Dwarf	Sable Marten
560	Netherland Dwarf	Silver Marten
561	Netherland Dwarf	Smoke Pearl Marten
562	Netherland Dwarf	Tans
563	Netherland Dwarf	Broken
564	Netherland Dwarf	Fawn
565	Netherland Dwarf	Himalayan

CODE	BREED	VARIETY
566	Netherland Dwarf	Orange
567	Netherland Dwarf	Agouti Lutino
568	Netherland Dwarf	Orange Lutino
569	Netherland Dwarf	Steel
570	Netherland Dwarf	Fox
581	New Zealand	Black
582	New Zealand	Blue
583	New Zealand	Broken
584	New Zealand	Red
585	New Zealand	White
601	Palomino	Golden
602	Palomino	Lynx
611	Polish	Black
612	Polish	Blue
613	Polish	Blue-Eyed White
614	Polish	Broken
615	Polish	Chocolate
616	Polish	Red-Eyed White
617	Polish	Lilac
631	Rex	Amber
632	Rex	Black
633	Rex	Blue
634	Rex	Broken
635	Rex	Calif.
636	Rex	Castor

# OPEN CLASSES - RABBIT

## CHART OF CLASSES - DIVISION 0002

The following breeds will be sanctioned: *(No pre-junior classes)*

CODE	BREED	VARIETY
637	Rex	Chinchilla
638	Rex	Chocolate
639	Rex	Lilac
640	Rex	Lynx
641	Rex	Opal
642	Rex	Otter
643	Rex	Red
644	Rex	Sable
645	Rex	Seal
646	Rex	White
671	Rhineland	Black
672	Rhineland	Blue
681	Satin	Black
682	Satin	Blue
683	Satin	Broken
684	Satin	Chinchilla
685	Satin	Chocolate
686	Satin	Copper
687	Satin	Himalayan
688	Satin	Lilac
689	Satin	Otter
690	Satin	Red
691	Satin	Siamese
692	Satin	White
711	Silver	Black
712	Silver	Brown
713	Silver	Fawn
721	Silver Fox	Black
722	Silver Fox	Chocolate

CODE	BREED	VARIETY
731	Silver Marten	Black
732	Silver Marten	Blue
733	Silver Marten	Chocolate
734	Silver Marten	Lilac
735	Silver Marten	Sable
751	Tan	Black
752	Tan	Blue
753	Tan	Chocolate
754	Tan	Lilac
761	Thrianta	

# OPEN CLASSES - CAVY

## CHART OF CLASSES - DIVISION 0003

CODE	BREED	VARIETY
801	Abyssinian	Self
802	Abyssinian	Agouti
803	Abyssinian	Brindle
804	Abyssinian	Roan
805	Abyssinian	Any Other Solid
806	Abyssinian	Marked
807	Abyssinian	Tan Pattern
808	Abyssinian	Cal Pattern
821	Abyssinian Satin	Self
822	Abyssinian Satin	Agouti
823	Abyssinian Satin	Brindle
824	Abyssinian Satin	Roan
825	Abyssinian Satin	Any Other Solid
826	Abyssinian Satin	Marked
827	Abyssinian Satin	Tan Pattern
828	Abyssinian Satin	Cal Pattern
841	American	Black
842	American	Cream
843	American	Red
844	American	White
845	American	Any Other Self
846	American	Brindle
847	American	Roan

CODE	BREED	VARIETY
848	American	Dilute Solid
849	American	Golden Solid
850	American	Silver Solid
851	American	Dilute Agouti
852	American	Golden Agouti
853	American	Silver Agouti
854	American	Dalmatian
855	American	Dutch
856	American	Himalayan
857	American	Tortoise Shell and White
858	American	Broken Color and Tortoise Shell
859	American	Tan Pattern
860	American	Cal Pattern
871	American Satin	Cream
872	American Satin	Red
873	American Satin	White
874	American Satin	Any Other Self
875	American Satin	Agouti
876	American Satin	Intermixed Solids

CODE	BREED	VARIETY
877	American Satin	Ticked Solids
878	American Satin	Broken Color and Tortoise Shell
879	American Satin	Any Other Marked
880	American Satin	Tan Pattern
881	American Satin	Cal Pattern
901	Coronet	Self
902	Coronet	Agouti
903	Coronet	Broken Color
904	Coronet	Tortoise Shell and White
905	Coronet	Any Other Variety
906	Coronet	Tan Pattern
907	Coronet	Cal Pattern
921	Peruvian	Self
922	Peruvian	Agouti
923	Peruvian	Broken Color
924	Peruvian	Tortoise Shell and White
925	Peruvian	Any Other Variety
926	Peruvian	Tan Pattern
927	Peruvian	Cal Pattern
941	Peruvian Satin	Self
942	Peruvian Satin	Agouti

# OPEN CLASSES - CAVY

## CHART OF CLASSES - DIVISION 0003

CODE	BREED	VARIETY
943	Peruvian Satin	Broken Color
944	Peruvian Satin	Tortoise Shell and White
945	Peruvian Satin	Any Other Variety
946	Peruvian Satin	Tan Pattern
947	Peruvian Satin	Cal Pattern
961	Silkie	Self
962	Silkie	Agouti
963	Silkie	Broken Color
964	Silkie	Tortoise Shell and White
965	Silkie	Any Other Variety
966	Silkie	Tan Pattern
967	Silkie	Cal Pattern
981	Silkie Satin	Self
982	Silkie Satin	Agouti
983	Silkie Satin	Broken Color
984	Silkie Satin	Tortoise Shell and White
985	Silkie Satin	Any Other Variety
986	Silkie Satin	Tan Pattern
987	Silkie Satin	Cal Patter

CODE	BREED	VARIETY
1001	Teddy	Self
1002	Teddy	Agouti
1003	Teddy	Intermixed Solids
1004	Teddy	Ticked Solids
1005	Teddy	Broken Color
1006	Teddy	Tortoise Shell and White
1007	Teddy	Any Other Marked
1008	Teddy	Tan Pattern
1009	Teddy	Cal Pattern
1021	Teddy Satin	Self
1022	Teddy Satin	Agouti
1023	Teddy Satin	Solid
1024	Teddy Satin	Broken Color
1025	Teddy Satin	Tortoise Shell and White
1026	Teddy Satin	Any Other Marked
1027	Teddy Satin	Tan Pattern
1028	Teddy Satin	Cal Pattern
1041	Texel	Self
1042	Texel	Agouti
1043	Texel	Broken Color
1044	Texel	Tortoise Shell and White

CODE	BREED	VARIETY
1045	Texel	Any Other Variety
1046	Texel	Tan Pattern
1047	Texel	Cal Pattern
1061	White Crested	Black
1062	White Crested	Red
1063	White Crested	Any Other Self
1064	White Crested	Agouti
1065	White Crested	Brindle
1066	White Crested	Any Other Solid
1067	White Crested	Marked
1068	White Crested	Tan Pattern
1069	White Crested	Cal Pattern

# YOUTH CLASSES - RABBIT

## CHART OF CLASSES - DIVISION 0004

The following breeds will be sanctioned:

CODE	BREED	VARIETY
2011	American	Blue
2012	American	White
2021	American Fuzzy Lop	Broken
2022	American Fuzzy Lop	Soild
2031	American Sable	
2041	Argente Brun	
2051	English Angora	Colored
2052	English Angora	White
2061	French Angora	Colored
2062	French Angora	White
2071	Giant Angora	White
2072	Giant Angora	Colored
2081	Satin Angora	Colored
2082	Satin Angora	White
2091	Belgian Hare	Rufus
2092	Belgian Hare	Tan
2100	Beveren	Black
2101	Beveren	Blue
2103	Beveren	White
2111	Blanc de Hotot	
2115	Blue Holicer	
2121	Britannia Petite	Black
2122	Britannia Petite	Black Otter
2123	Britannia Petite	Blue Eyed White
2131	Britannia Petite	Broken

CODE	BREED	VARIETY
2141	Britannia Petite	Chestnut Agouti
2142	Britannia Petite	Himalayan
2143	Britannia Petite	Ruby Eyed White
2144	Britannia Petite	Sable Marten
2145	Britannia Petite	Siamese Sable
2146	Britannia Petite	Tortoise Shell Group
2151	Californian	
2161	Champagne D'Argent	
2171	Checkered Giant	Black
2172	Checkered Giant	Blue
2181	Czech Frosty	
2191	American Chinchilla	
2201	Giant Chinchilla	
2212	Standard Chinchilla	
2221	Cinnamon	
2231	Creme D'Argent	
2241	Dutch	Black
2242	Dutch	Blue
2243	Dutch	Chinchilla
2244	Dutch	Chocolate
2245	Dutch	Golden
2246	Dutch	Gray

CODE	BREED	VARIETY
2247	Dutch	Lilac
2248	Dutch	Steel
2249	Dutch	Tortoise
2261	Dwarf Hotot	
2271	Dwarf Papillon	Black
2272	Dwarf Papillon	Blue
2273	Dwarf Papillon	Chocolate
2274	Dwarf Papillon	Lilac
2281	English Spot	Black
2291	English Spot	Blue
2292	English Spot	Chocolate
2293	English Spot	Gold
2294	English Spot	Gray
2295	English Spot	Lilac
2296	English Spot	Tortoise
2311	Flemish Giant	Black
2312	Flemish Giant	Blue
2313	Flemish Giant	Fawn
2314	Flemish Giant	Light Gray
2315	Flemish Giant	Sandy
2316	Flemish Giant	Steel Gray
2317	Flemish Giant	White
2231	Florida White	
2341	Harlequin	Japanese
2342	Harlequin	Magpie
2351	Havana	Black
2352	Havana	Blue
2353	Havana	Broken
2354	Havana	Chocolate
2355	Havana	Lilac
2371	Himalayan	Black
2372	Himalayan	Blue
2373	Himalayan	Chocolate
2374	Himalayan	Lilac



# YOUTH CLASSES - RABBIT

## CHART OF CLASSES - DIVISION 0004

The following breeds will be sanctioned:

CODE	BREED	VARIETY
2381	Holland Lop	Broken
2382	Holland Lop	Solid
2391	Jersey Wooly	Agouti
2392	Jersey Wooly	Broken
2393	Jersey Wooly	Self
2394	Jersey Wooly	Shaded
2395	Jersey Wooly	Tan Pattern
2396	Jersey Wooly	AOV
2411	Lilac	
2421	English Lop	Broken Pattern
2422	English Lop	Solid Pattern
2431	French Lop	Broken Pattern
2432	French Lop	Solid Pattern
2441	Lionhead	Chocolate
2442	Lionhead	Ruby-Eyed White
2443	Lionhead	Black
2444	Lionhead	Seal
2445	Lionhead	Siamese Sable
2446	Lionhead	Tortoise
2447	Lionhead	Smoke Pearl
2461	Mini Lop	Broken Pattern
2462	Mini Lop	Solid Pattern

CODE	BREED	VARIETY
2471	Mini Rex	Amber
2472	Mini Rex	Black
2473	Mini Rex	Blue
2474	Mini Rex	Blue-Eyed White
2475	Mini Rex	Broken
2476	Mini Rex	Castor
2477	Mini Rex	Chinchilla
2478	Mini Rex	Chocolate
2479	Mini Rex	Himalayan
2480	Mini Rex	Lilac
2481	Mini Rex	Lynx
2482	Mini Rex	Opal
2483	Mini Rex	Otter
2484	Mini Rex	Red
2485	Mini Rex	Sable
2486	Mini Rex	Sable Point
2487	Mini Rex	Seal
2488	Mini Rex	Silver Marten
2489	Mini Rex	Smoke Pearl
2490	Mini Rex	Smoke Pearl Marten
2491	Mini Rex	Tortoise
2492	Mini Rex	White
2511	Mini Satin	Black
2512	Mini Satin	Blue
2513	Mini Satin	Broken
2514	Mini Satin	Chinchilla
2515	Mini Satin	Chocolate
2516	Mini Satin	Chocolate Agouti

CODE	BREED	VARIETY
2517	Mini Satin	Copper
2518	Mini Satin	Himalayan
2519	Mini Satin	Lilac
2520	Mini Satin	Opal
2521	Mini Satin	Otter
2522	Mini Satin	Red
2523	Mini Satin	Sable
2524	Mini Satin	Siamese
2525	Mini Satin	Silver Marten
2526	Mini Satin	Squirrel
2527	Mini Satin	Tortoise
2528	Mini Satin	White
2541	Netherland Dwarf	Black
2542	Netherland Dwarf	Blue
2543	Netherland Dwarf	Chocolate
2544	Netherland Dwarf	Lilac
2545	Netherland Dwarf	Blue Eye White
2547	Netherland Dwarf	Sable Point
2548	Netherland Dwarf	Siamese Sable
2549	Netherland Dwarf	Siamese Smoke Pearl
2550	Netherland Dwarf	Tortoise Shell
2551	Netherland Dwarf	Blue Tortoise Shell
2552	Netherland Dwarf	Chestnut

# YOUTH CLASSES - RABBIT

## CHART OF CLASSES - DIVISION 0004

The following breeds will be sanctioned:

CODE	BREED	VARIETY
2553	Netherland Dwarf	Chocolate Agouti
2554	Netherland Dwarf	Ruby Eye White
2555	Netherland Dwarf	Chinchilla
2556	Netherland Dwarf	Lynx
2557	Netherland Dwarf	Opal
2558	Netherland Dwarf	Squirrel
2559	Netherland Dwarf	Otter
2560	Netherland Dwarf	Sable Marten
2561	Netherland Dwarf	Silver Marten
2562	Netherland Dwarf	Smoke Pearl Marten
2563	Netherland Dwarf	Tans
2564	Netherland Dwarf	Broken
2565	Netherland Dwarf	Fawn
2566	Netherland Dwarf	Himalayan
2567	Netherland Dwarf	Orange
2568	Netherland Dwarf	Agouti Lutino
2569	Netherland Dwarf	Orange Lutino
2570	Netherland Dwarf	Steel
2571	Netherland Dwarf	Fox

CODE	BREED	VARIETY
2581	New Zealand	Black
2582	New Zealand	Blue
2583	New Zealand	Broken
2584	New Zealand	Red
2585	New Zealand	White
2601	Palomino	Golden
2302	Palomino	Lynx
2611	Polish	Black
2612	Polish	Blue
2613	Polish	Blue-Eyed White
2614	Polish	Broken
2615	Polish	Chocolate
2616	Polish	Red-Eyed White
2617	Polish	Lilac
2631	Rex	Amber
2632	Rex	Black
2633	Rex	Blue
2634	Rex	Broken
2635	Rex	Calif.
2636	Rex	Castor
2637	Rex	Chinchilla
2638	Rex	Chocolate
2639	Rex	Lilac
2640	Rex	Lynx
2641	Rex	Opal
2642	Rex	Otter
2643	Rex	Red
2644	Rex	Sable
2645	Rex	Seal
2646	Rex	White
2671	Rhineland	Black
2672	Rhineland	Blue

CODE	BREED	VARIETY
2681	Satin	Black
2682	Satin	Blue
2683	Satin	Broken
2684	Satin	Chinchilla
2685	Satin	Chocolate
2686	Satin	Copper
2687	Satin	Himalayan
2688	Satin	Lilac
2689	Satin	Otter
2690	Satin	Red
2691	Satin	Siamese
2692	Satin	White
2711	Silver	Black
2712	Silver	Brown
2713	Silver	Fawn
2721	Silver Fox	Black
2722	Silver Fox	Chocolate
2731	Silver Marten	Black
2732	Silver Marten	Blue
2733	Silver Marten	Chocolate
2734	Silver Marten	Lilac
2735	Silver Marten	Sable
2751	Tan	Black
2752	Tan	Blue
2753	Tan	Chocolate
2754	Tan	Lilac
2761	Thrianta	

# YOUTH CLASSES - CAVY

## CHART OF CLASSES - DIVISION 0005

The following breeds will be sanctioned:

CODE	BREED	VARIETY
2801	Abyssinian	Self
2802	Abyssinian	Agouti
2803	Abyssinian	Brindle
2804	Abyssinian	Roan
2805	Abyssinian	Any Other Solid
2806	Abyssinian	Marked
2807	Abyssinian	Tan Pattern
2808	Abyssinian	Cal Pattern
2821	Abyssinian Satin	Self
2822	Abyssinian Satin	Agouti
2823	Abyssinian Satin	Brindle
2824	Abyssinian Satin	Roan
2825	Abyssinian Satin	Any Other Solid
2826	Abyssinian Satin	Marked
2827	Abyssinian Satin	Tan Pattern
2828	Abyssinian Satin	Cal Pattern
2841	American	Black
2842	American	Cream
2843	American	Red
2844	American	White
2845	American	Any Other Self
2846	American	Brindle
2847	American	Roan
2848	American	Dilute Solid

CODE	BREED	VARIETY
2849	American	Golden Solid
2850	American	Silver Solid
2851	American	Dilute Agouti
2852	American	Golden Agouti
2853	American	Silver Agouti
2854	American	Dalmatian
2855	American	Dutch
2856	American	Himalayan
2857	American	Tortoise Shell and White
2858	American	Broken Color and Tortoise Shell
2859	American	Tan Pattern
2860	American	Cal Pattern
2871	American Satin	Cream
2872	American Satin	Red
2873	American Satin	White
2874	American Satin	Any Other Self
2875	American Satin	Agouti
2876	American Satin	Intermixed Solids
2877	American Satin	Ticked Solids
2878	American Satin	Broken Color and Tortoise Shell

CODE	BREED	VARIETY
2879	American Satin	Any Other Marked
2880	American Satin	Tan Pattern
2881	American Satin	Cal Pattern
2902	Coronet	Agouti
2903	Coronet	Broken Color
2904	Coronet	Tortoise Shell and White
2905	Coronet	Any Other Variety
2906	Coronet	Tan Pattern
2907	Coronet	Cal Pattern
2921	Peruvian	Self
2922	Peruvian	Agouti
2923	Peruvian	Broken Color
2924	Peruvian	Tortoise Shell and White
2925	Peruvian	Any Other Variety
2926	Peruvian	Tan Pattern
2927	Peruvian	Cal Pattern
2942	Peruvian Satin	Agouti
2943	Peruvian Satin	Broken Color
2944	Peruvian Satin	Tortoise Shell and White
2945	Peruvian Satin	Any Other Variety

# YOUTH CLASSES - CAVY

## CHART OF CLASSES - DIVISION 0005

The following breeds will be sanctioned:

CODE	BREED	VARIETY
2946	Peruvian Satin	Tan Pattern
2947	Peruvian Satin	Cal Pattern
2961	Silkie	Self
2962	Silkie	Agouti
2963	Silkie	Broken Color
2964	Silkie	Tortoise Shell and White
2965	Silkie	Any Other Variety
2966	Silkie	Tan Pattern
2967	Silkie	Cal Pattern
2982	Silkie Satin	Agouti
2983	Silkie Satin	Broken Color
2984	Silkie Satin	Tortoise Shell and White
2985	Silkie Satin	Any Other Variety
2986	Silkie Satin	Tan Pattern
2987	Silkie Satin	Cal Pattern
3001	Teddy	Self
3002	Teddy	Agouti
3003	Teddy	Intermixed Solids
3004	Teddy	Ticked Solids
3005	Teddy	Broken Color

CODE	BREED	VARIETY
3006	Teddy	Tortoise Shell and White
3007	Teddy	Any Other Marked
3008	Teddy	Tan Pattern
3009	Teddy	Cal Pattern
3021	Teddy Satin	Self
3022	Teddy Satin	Agouti
3023	Teddy Satin	Solid
3024	Teddy Satin	Broken Color
3025	Teddy Satin	Tortoise Shell and White
3026	Teddy Satin	Any Other Marked
3027	Teddy Satin	Tan Pattern
3028	Teddy Satin	Cal Pattern
3041	Texel	Self
3042	Texel	Agouti
3043	Texel	Broken Color
3044	Texel	Tortoise Shell and White
3045	Texel	Any Other Variety
3046	Texel	Tan Pattern
3047	Texel	Cal Pattern

CODE	BREED	VARIETY
3061	White Crested	Black
3062	White Crested	Red
3063	White Crested	Any Other Self
3064	White Crested	Agouti
3065	White Crested	Brindle
3066	White Crested	Any Other Solid
3067	White Crested	Marked
3068	White Crested	Tan Pattern
3069	White Crested	Cal Pattern

# WOOL AND FUR CLASSES

## CHART OF CLASSES - DIVISION 0006

All animals entered in fur and wool classes must be entered in respective open or youth classes. Additional fee \$1.00.

<b>Youth Breed Fur/Wool</b>	1 White
<b>Youth Breed Fur/Wool</b>	2 Colored
<b>Open Breed Fur/Wool</b>	3 White
<b>Open Breed Fur/Wool</b>	4 Colored

PREMIUMS					
	1st	2nd	3rd	4th	5th
<b>Meat Classes (Open)</b>	\$16.50	\$11.00	\$5.50		
<b>Meat Classes (Youth)</b>	\$16.50	\$11.00	\$5.50		
<b>Grand &amp; Reserve Champion Meat Pen (Youth)</b>	Banner				
<b>Individual Classes (Youth/Open)</b>	\$5.50	\$4.40	\$3.30	\$2.20	\$1.10
<b>Wool and Fur Classes</b>	\$5.50	\$4.40	\$3.30	\$2.20	\$.10

<b>Best of Variety</b>	<b>Single Rosette</b>
<b>Best of Opposite Sex of Variety</b>	<b>Single Rosette</b>
<b>Best of Breed</b>	<b>\$5.50 + Champion Rosette</b>
<b>Best Opposite Sex of Breed</b>	<b>\$4.40 + Champion Rosette</b>
<b>Best Rabbit/Cavy in Show</b>	<b>Plaque by PA Farm Show Commission</b>
<b>Reserve in Show Rabbit/Cavy</b>	<b>\$11.00 + Champion Rosette</b>

# RABBIT/CAVY YOUTH SHOWMANSHIP CONTEST

## JUDGES

Matt Bishop, Harrisburg, PA  
 Angie Myers, Harrisburg, PA  
 Torri Perry, Fort Washington, PA

## DATES/TIMES

Saturday, January 4, 2025  
 10:00 a.m.  
 East Hall

4-H Club and FFA Members	<p>These classes are open to 4-H Club and FFA members. Exhibitors must have been born from 2005 through 2015 inclusive. Exhibitors must be 4-H member carrying a rabbit project under the supervision of the Pennsylvania State University Agricultural Extension Service or a dues-paying FFA member carrying a rabbit project under the supervision of Pennsylvania State University Agricultural and Cooperative Extension Service or a Vocational Agriculture Instructor and must be a member in good standing as defined by the state 4-H or FFA Office. <b>Pre-entry for Showmanship is required.</b> Entries are due December 1 with breed entries and must be made online.</p>
Ownership	<p>Rabbit or cavies used must be owned by the exhibitor. Rabbits and cavies used for Showmanship must be entered and shown in the youth show.</p>
Scoring	<p>Exhibitors will meet with the judge and be scored individually. The score will be based on the following: carrying the rabbit to the table; posing, checking ears, teeth, eyes, and nose; checking toenails, hocks, front feet, abdomen, legs, and tail; checking sex, checking fur, the exhibitor's appearance, actions, and knowledge. Exhibitor's knowledge will be tested by answering questions related to the breed exhibited, diseases, and standard management practices. The exhibitor is not restricted to a specific order for the presentation. Blank scoresheets are available from the Department Chairman, PaSRBA Board members, or online at <a href="http://www.arba.net">www.arba.net</a>.</p>
Attire	<p>Exhibitors will show in proper attire, which includes a long-sleeved top.</p>



# RABBIT/CAVY SHOWMANSHIP

Check In	All showmanship contestants must check in with the show chairpersons on Friday, January 3, between 10:00 a.m. and 1:00 p.m. or on Saturday, January 4, 9:30 a.m.
Requirements	All Market Showmanship entries must have a meat class entry. Breeding must have a breeding class entry. Youth may participate in both breeding and market.

## CHART OF CLASSES - DIVISION 0007

### Market Rabbit/Cavy Showmanship

<b>1801</b>	Market Rabbit/Cavy Showmanship - Exhibitors born 2005-2007
<b>1802</b>	Market Rabbit/Cavy Showmanship - Exhibitors born 2008-2009
<b>1803</b>	Market Rabbit/Cavy Showmanship - Exhibitors born 2010-2012
<b>1804</b>	Market Rabbit/Cavy Showmanship - Exhibitors born 2013-2015

First and second place winners of each division will compete for the title of Market Grand and Market Reserve Grand Champion Rabbit Showman. No premiums awarded.

<b>1805</b>	Market Grand Champion Rabbit Showman
<b>1806</b>	Market Reserve Grand Champion Rabbit Showman

**The Grand Champion and Reserve Champion Market Rabbit Showman will be eligible to compete in the Market Master Showmanship competition which will be held on Monday, January 6 in the Small Arena at 7:00 p.m.**

# RABBIT/CAVY SHOWMANSHIP

## Breeding Rabbit/Cavy Showmanship

<b>1807</b>	Breeding Rabbit/Cavy Showmanship - Exhibitors born 2005-2007
<b>1808</b>	Breeding Rabbit/Cavy Showmanship - Exhibitors born 2008-2009
<b>1809</b>	Breeding Rabbit/Cavy Showmanship - Exhibitors born 2010-2012
<b>1810</b>	Breeding Rabbit/Cavy Showmanship - Exhibitors born 2013-2015

First and second place winners of each division will compete for the title of Breeding Grand and Breeding Reserve Grand Champion Rabbit Showman. No premiums awarded.

<b>1811</b>	Breeding Grand Champion Rabbit Showman
<b>1812</b>	Breeding Reserve Grand Champion Rabbit Showman

**The Grand Champion and Reserve Champion Breeding Rabbit Showman will be eligible to compete in the Master Showmanship competition which will be held on Saturday, January 11 in the Small Arena at 2:30 p.m.**

Placing	1st	2nd	3rd	4th	5th
	\$16	\$14	\$12	\$10	\$8
	Plaque	Ribbon	Ribbon	Ribbon	Ribbon

# RABBIT YOUTH POSTER CONTEST

## JUDGES

Matt Bishop  
Angie Myers  
Torri Perry

## DATES/TIMES

Saturday, January 4, 2025, following  
the Showmanship Contest

## ENTRY DEADLINE

**All entries must be made online using [FairEntry software](#).**

4-H Club and FFA Members	These classes are open to 4-H Club and FFA members. Exhibitors must have been born from 2005 through 2015 inclusive. Exhibitors must be 4-H member carrying a rabbit project under the supervision of the Pennsylvania State University Agricultural Extension Service or a dues-paying FFA member carrying a rabbit project under the supervision of Pennsylvania State University Agricultural and Cooperative Extension Service or a Vocational Agriculture Instructor and must be a member in good standing as defined by the state 4-H or FFA Office.
Entries	Each contestant can enter two poster classes but no more than one poster per class.
Judging	Each article will be judged according to the exhibit guidelines.
Identification	Each exhibitor must attach identification to the back of each poster: name, address, zip code, and county.
Requirements	All posters must be 14" x 22" in size. All posters should be flat, not three-dimensional. All others will be disqualified.

# RABBIT YOUTH POSTER CONTEST

Arrival Deadline	All posters must arrive at the Farm Show Complex by 12:00 noon on Friday, January 3, 2025. Posters may be hand delivered or sent to Pennsylvania Farm Show Complex & Expo Center, Attn: Youth Rabbit Contest, 2300 N. Cameron St., Harrisburg, PA 17110-9443.
Contest	Poster Contest entries will be judged at the conclusion of the Showmanship Contest on Saturday, January 4, 2025.
Release	Entries will be released between 5:00 p.m. and 7:00 p.m. on Saturday, January 11, 2025. Any posters not claimed will become the property of the Farm Show Rabbit Department. Any posters removed prior to the listed times without Show Management approval will result in forfeiture of <b>all</b> premiums.

# RABBIT YOUTH POSTER CONTEST

## CHART OF CLASSES - DIVISION 0008

### Premiums

Placing	1st	2nd	3rd	4th	5th
	\$17.60	\$15.40	\$13.20	\$11.00	\$8.20

### Classes

<b>Science of Rabbits:</b> Diseases, anatomy, research projects	
<b>1820</b>	Beginner Level, Exhibitors born 2010-2015
<b>1821</b>	Advanced Level, Exhibitors born 2005-2009

<b>Breeds and History of Rabbits:</b> Breed Traits, classes, breeds, history	
<b>1822</b>	Beginner Level, Exhibitors born 2010-2015
<b>1823</b>	Advanced Level, Exhibitors born 2005-2009

<b>Management of Rabbits:</b> Breeding, feeding, housing, management	
<b>1824</b>	Beginner Level, Exhibitors born 2010-2015
<b>1825</b>	Advanced Level, Exhibitors born 2005-2009

<b>Commercial Uses of Rabbits:</b> Products, nutrition, food preparation	
<b>1826</b>	Beginner Level, Exhibitors born 2010-2015
<b>1827</b>	Advanced Level, Exhibitors born 2005-2009

# ANGORA PALOOZA

For the 109th PA State Farm Show celebration, the Rabbit Department will be holding a rabbit to finished woven scarf competition! This competition is a compact, angora version of the annual Sheep to Shawl Contest and will be used to demonstrate one of the dual purposes of the rabbit industry. All scarves will be auctioned off at the PA Farm Show. Rules for the competition are as follows:

1. Postmark	Entries must be postmarked no earlier than October 12, 2024.
2. Contact	Additional entry forms can be obtained through Angie Myers, (717) 395-4581, Email: shawfamily@bluemountainfarms.net.
3. Entry Fee	Entry fee of \$30.00 is non-refundable.
4. Teams	The teams may consist of the following: youth up to and including age 18 by December 31, 2024, a combination of youth and adults, or all adults.
5. Membership	The Pennsylvania Angora Palooza Contest is open to Pennsylvania teams. Each team shall consist of up to five members: three (3) spinners, one (1) weaver, one (1) alternate or carder. A maximum of five (5) teams will participate.
6. Supply	Each team will supply up to two rabbits for the weft yarn during the contest. The fiber must come from one harvest from up to two rabbits and must be done at the contest.
7. Judging	A panel of two (2) experienced judges will judge the contest on the following basis: team identification 10 points; fiber presentation and suitability 10 points; spinning 30 points; weaving 20 points; design 30 points; for a total of 100 points. Bonus points for time will be awarded as follows: first team finished-10 points; second-8 points; third-6 points; fourth-4 points; fifth-2 points. JUDGE'S DECISIONS ARE FINAL.
8. Restrictions	No drum carders or electric bobbin winders will be allowed. Hand carding is not required.



# ANGORA PALOOZA

9. Scarf Requirement	Scarf requirements are as follows: The finished scarf will be a minimum of 10 inches wide and a minimum of 70 inches long. In addition, all scarves must have a minimum of 5 inches of fringe on each end. In order for the scarf to be judged and be eligible for the shawl auction, the woven area must measure a minimum of 70 inches off the loom and be completely finished by knotting or hemstitching the ends by the end of the time allotted. In addition, no scarf will be eligible for auction if the woven area is less than five picks per inch.
10. Warp	Each team will supply their own warp and thread the loom before the contest. The minimum space is eight EPI, however, minimum of six EPI will be allowed to compensate special designs. Warp must be 100% natural fibers, 50% of which MUST BE ANGORA (no exceptions).
11. Weft Yarn	Weft yarn must be Angora rabbit fiber (no exceptions) and will not exceed three times the diameter of the warp.
12. Equipment	Each team will supply all equipment, including spinning wheels, cards, looms, etc. Chairs are provided upon request.
13. Identification	Each team will identify themselves with distinctive signs/banners and distinctive dress.
14. Auction	Scarves will be auctioned at the fair. Proceeds from the auction will be given back to the individual teams.
15. Eligibility	Teams must have scarves completed and off the loom in three hours to be eligible for ribbons, awards, and auction.
16. Display	Each team is encouraged to have on display a completed wrap or sample of the weaving pattern but not required.

**PREMIUMS WILL BE AWARDED ON THE FOLLOWING BASIS:**

**Place**

1st	2nd	3rd	4th	5th	6th
\$200	\$180	\$150	\$120	\$80	\$50

# 2025 PENNSYLVANIA FARM SHOW

## COMPLIANCE STATEMENT YOUTH RABBIT MEAT PEN

( ) 4-H ( ) FFA

Exhibitor Name: \_\_\_\_\_

Address: \_\_\_\_\_

City: \_\_\_\_\_

Zip: \_\_\_\_\_

County: \_\_\_\_\_

Breed of Rabbits: Variety (color):

\_\_\_\_\_  
\_\_\_\_\_  
\_\_\_\_\_  
\_\_\_\_\_  
\_\_\_\_\_  
\_\_\_\_\_  
\_\_\_\_\_  
\_\_\_\_\_  
\_\_\_\_\_  
\_\_\_\_\_

\_\_\_\_\_  
Exhibitor Date

1. I certify that the above exhibitor notified me (or other FFA - 4-H representative) of the intent to show a meat pen at Farm Show before his does were bred.

\_\_\_\_\_  
Extension Educator, 4-H Club Leader, or FFA Advisor Date

2. I certify that the above exhibitor notified by (or another FFA - 4-H representative) that \_\_\_\_\_ does have kindled in his rabbitry.

\_\_\_\_\_  
Extension Educator, 4-H Club Leader, or FFA Advisor Date

# 2025 PENNSYLVANIA FARM SHOW

## COMPLIANCE STATEMENT YOUTH RABBIT MEAT PEN

3. I certify that the tattoo numbers listed below were tattooed in the left ear of each rabbit.

1.
2.
3.
4.
5.
6.
7.
8.
9.
10.

Signed: \_\_\_\_\_ Title: \_\_\_\_\_

Extension Educator, 4-H Club Leader, or FFA Advisor

Date

This statement MUST be submitted to the Rabbit Committee via email to [farmshow.rabbits@gmail.com](mailto:farmshow.rabbits@gmail.com) by December 15, 2024.

# 2025 PENNSYLVANIA FARM SHOW

## RABBIT EXHIBITORS PLEASE PRINT, SIGN, AND HAND IN AT TIME OF EXHIBITION.

*Updated as of June 10, 2024*

### **Farm Show Exhibitor Rabbit Hemorrhagic Disease Attestation: Rabbit Hemorrhagic Disease**

Rabbit Hemorrhagic Disease (RHD) is a fatal disease of domestic and wild rabbits of the family Leporidae, which includes hares, jackrabbits and cottontails. RHD is caused by a calicivirus and there are several strains of RHD virus which cause disease.

Isolated cases of RHD have appeared intermittently in the United States since 2000. In 2020, outbreaks of RHD have been reported in domestic rabbits, cottontail rabbits, and hares in the United States. Rabbit Hemorrhagic Disease Virus Serotype 2 (RHDV-2) has been reported in numerous states including **AZ, CA, CO, FL, ID, IL, KS, MT, NM, NV, OR, SD, TX, UT, WA, WY.**

In Pennsylvania we have a quarantine order in place to prevent the introduction of RHD into our Commonwealth from rabbits that originate from one of the states listed above or other states in which the disease may have also been diagnosed in the last 12 months. The language in the quarantine states the following:

No rabbits or their products, such as, meat, pelts, hides, carcasses or other items, and no equipment, exposed feed or conveyances or other items or associated materials may enter the Commonwealth of Pennsylvania from a Commonwealth, State, Territory, or Country where RHD has been diagnosed in the prior twelve (12) months or there is a reasonable suspicion it exists unless they meet the following requirements:

(a) All live rabbits must be accompanied by an Interstate Certificate of Veterinary inspection (ICVI) and must be examined by an accredited veterinarian within the seventy-two (72) hours prior to the date of shipment to the Commonwealth of Pennsylvania. The ICVI must include statements by an accredited veterinarian certifying that:

(i) All rabbits in the shipment have been examined for and found free of infectious, contagious or communicable diseases;

(ii) All rabbits have originated from a single premise that has no signs of infectious, contagious or communicable disease in rabbits;

(iii) There have been no movements of rabbits onto the premises of origin within the 90 days prior to the date of shipment; and

(iv) The rabbits have had no contact with wild or captive rabbits other than their cohorts in the 90 days prior to the date of shipment.

(b) No rabbits or their products, such as, meat, pelts, hides, carcasses or other items, and no equipment, exposed feed or conveyances or other items or associated materials may enter the Commonwealth of Pennsylvania from a premises exposed to, contaminated with or known to be affected with RHD, or where there is a reasonable suspicion the disease exists or the rabbits have been exposed to or infected with RHD.

# 2025 PENNSYLVANIA FARM SHOW

In Pennsylvania Vaccination of rabbits for RHDV2 is conditionally allowed by licensed Veterinarians. Exhibitors are encouraged to vaccinate rabbits especially show rabbits that are high risk and follow best management procedures (BMPs) before during and after shows in regard to sanitation, cleaning and disinfection and post exhibition isolation. Exhibitors should not share or swap any equipment, cages or feed. Vaccination against RHDV2 does not exempt rabbits from meeting all import requirements in the above indented section. USDA Guidance regarding RHDV and BMPs can be found at:

[www.aphis.usda.gov/aphis/ourfocus/animalhealth/sa-epidemiology-animalhealth-ceah/ri](http://www.aphis.usda.gov/aphis/ourfocus/animalhealth/sa-epidemiology-animalhealth-ceah/ri)

Please check all the statements that apply:

At least one statement must be checked to allow exhibition.

I hereby attest that my Rabbits do not originate outside of Pennsylvania from a state or territory listed above or where RHD-2 is known to exist within the last 12 months and therefore are not required to meet the Commonwealth import requirements listed above.

I hereby attest my rabbits are healthy and have not in the past 90 days been in (or have not been comingled with rabbits from) any states including (**AZ, CA, CO, FL, ID, IL, KS, MT, NM, NV, OR, SD, TX, UT, WA, WY**) where RHD-2 is known to exist:

I hereby attest that my Rabbits are healthy and have not in the past 90 days been in (or have been comingled with rabbits from) any states including (**AZ, CA, CO, FL, ID, IL, KS, MT, NM, NV, OR, SD, TX, UT, WA, WY**) where RHD-2 is known to exist. However, I acknowledge that I exhibited rabbits in one of the above listed states, these rabbits are not in this shipment and upon return from exhibition those rabbits were kept isolated and apart without contact from the rabbits in this shipment for at least the past 90 days. I have not brought to this event, any equipment, feed, show supplies, or products that were used when exhibiting other rabbits in any one of the above listed states.

---

Parent, Guardian or Exhibitor name printed

Date

---

Parent, Guardian or Exhibitor signature

Date

# FIRE REGULATIONS

1. All exit corridors and emergency exits must be kept clear; no partial blocking will be permitted.
2. All fire alarm pull stations must be kept clear.
3. Fire extinguishers may not be covered by any drapes or hidden by any type of displays.
4. No motorized camping units or vehicles may contain more than one (1) gallon of fuel while on display.
5. All pressurized fuel tanks may be drained.
6. All fuel fills must be locked and fuel caps must be taped closed with duct tape.
7. Any living trees and shrubs are acceptable as long as the shrubbery is individually bagged and baled.
8. Artificial trees and shrubbery must be treated with a flame proofing material. The fire official may request certification of flame proofing.
9. Any type of mulch materials must be treated with a flame proofing material or watered daily. If treated with a flame proofing material, certification may be requested by the fire official.
10. Smoking is prohibited in the Pennsylvania Farm Show Complex & Expo Center.
11. No open flames, fires or burning of any kind will be permitted within the Complex. No exterior burning is allowed unless the Department of Environmental Protection and the Bureau of Fire grant permission.
12. Vendors setting up tents, canopies and membrane covering must provide fire department with fire rating of material. Vendors must also provide any required portable fire extinguishers as needed.
13. Outside propane tanks shall be protected by posts or other approved physical barriers (Jersey barriers).
14. Extinguishers need to be visible, accessible and located in a conspicuous location where they will be readily accessible and immediately available for uses. These locations shall be along normal paths of travel.
15. Doors shall never be blocked or tied off.
16. The Fire Prevention Code of Harrisburg will be strictly enforced.

Contact the Harrisburg Bureau of Fire with any questions regarding the above regulations at 717-255-6464 or fax to 717-255-6448.

**R. E. Gallatin Jr.**  
**Fire Inspector**  
**123 Walnut St. Suite 220**  
**Harrisburg, PA 17101**  
**Phone: 717-225-3105**



# 2025 PA FARM SHOW

## EMERGENCY PREPAREDNESS TIPS

### EARLY DETECTION

- Early detection is the most effective way to prevent emergencies or lessen their impacts.
- Vendors and exhibitors will likely be the first to witness, experience, or report incidents.
- You can be the difference in preventing something harmful from happening.
- To report any type of threat or emergency incident, notify the PA State Police Command Post.

### BOMB THREATS

- Threats can be made in person, by phone, or in written message.
- Collect as much detailed information as possible about the threat (when, why, how, exact wording of threat, type of voice, personal appearance, clothing description, name, gender, phone number, physical address).
- It is especially important to know the perpetrator's timeline for activation of the device (when will it occur?).
- Immediately report the threat to the State Police Command Post.
- Authorities will investigate the threat and make the proper decisions accordingly in coordination with facility management.

### LOST CHILDREN

- Be sure to get the full name of the lost child and keep them safe with you. Notify the Farm Show security desk or closest security/law enforcement team. PSP or Farm Show staff will help to reunite lost children with loved ones.

### STATE POLICE

**717-787-4171**

-----

### FARM SHOW SECURITY

**717-231-6565**

### SHELTER IN PLACE

- Although rare, there could be incidents that occur outside the facility that could put people at risk (chemical fire, very severe weather). In these instances, a shelter-in-place plan will be implemented for the welfare of all occupants.

### SUSPICIOUS OBJECT

- Do not touch or disturb the object.
- Maintain a safe distance from the object and attempt to isolate the area.
- Notify the State Police Command Post with a description and location of the object.

### SUSPICIOUS PERSON

- Observe the circumstances and behavior of the suspicious activity.
- Notify the State Police Command Post and provide as much detail as possible.
- Details about the person should include direction of travel, appearance, height and weight, build, clothing, speech, and anything about the behavior that indicates suspicion.

## SEE SOMETHING? SAY SOMETHING!

Security and Law Enforcement Stations are located at the Cameron Street Lobby entrance and the Crossroads Security Office



# EMERGENCY

## PREPAREDNESS TIPS

### STATE POLICE

717-787-4171

-----

### FARM SHOW SECURITY

717-231-6565

## FLOODING

- Facility management will attempt to mitigate the effects of flooding and natural disasters before they happen and will work with all show vendors during this type of event.
- The Maclay and West parking lots are susceptible to flash flooding.
- Avoid contact with flood water.
- If major interstates or surrounding roads are being closed, facility management will make announcements accordingly.

## MEDICAL EMERGENCY

- Notify the State Police Command Post and they will dispatch emergency medical services to the location.
- Describe the nature and severity of the medical incident and location of the victim.
- Do not attempt to move the person unless you are a trained medical responder.
- Stay with the victim and seek help from others if necessary.
- If rendering aid due to your training, be careful not to expose yourself to hazards such as fire, electricity, hazardous materials, or blood borne pathogens

## FIRE & EVACUATION

- If you see a fire, activate the nearest alarm or notify the Farm Show Security Desk.
- The City of Harrisburg Bureau of Fire will respond to the alarm.
- When the building evacuation alarm is activated, leave by the closest and safest exit and alert others to do the same.
- Quickly take all personal belongings.
- Please listen to the instructions of the PA system announcements, Farm Show Complex employees, or responders.
- Do not use elevators!
- The facility is equipped with sprinklers and ABC fire extinguishers.
- Once outside, move a safe distance from the building.
- Do not return to an evacuated building until the 'all-clear' sign is provided by the Fire Chief, a Police Officer, or any other official first responder.
- Do not operate cell phones during an evacuation until the 'all-clear' is given

## VIOLENT BEHAVIOR

- Your safety comes first. Use your best judgement to preserve your life.
- Report any physical abuse to the State Police Command Post.
- If there's an active shooter in the facility but not in your area, evacuate the facility and find safety.
- If the active shooter is near your area and preventing your escape, go to a room that can be lock or barricaded or hide and remain silent.
- If the shooter knows you are there but you feel you can flee, quickly evacuate the area.
- If you feel like fleeing is not possible, you can either confront, or attempt to overpower the person.
- If there is a shooter, messages regarding the known location of that person may be broadcast over the PA System.

## SEE SOMETHING? SAY SOMETHING!

Security and Law Enforcement Stations are located at the Cameron Street Lobby entrance and the Crossroads Security Office

# FAMILIAR FACES

## BARN MANAGERS

Lexi Shannon and Grant Itle have once again committed to being your Barn Managers.

Need assistance in any of the barns?

Reach out!



**PAFARMSHOW.GOV**