

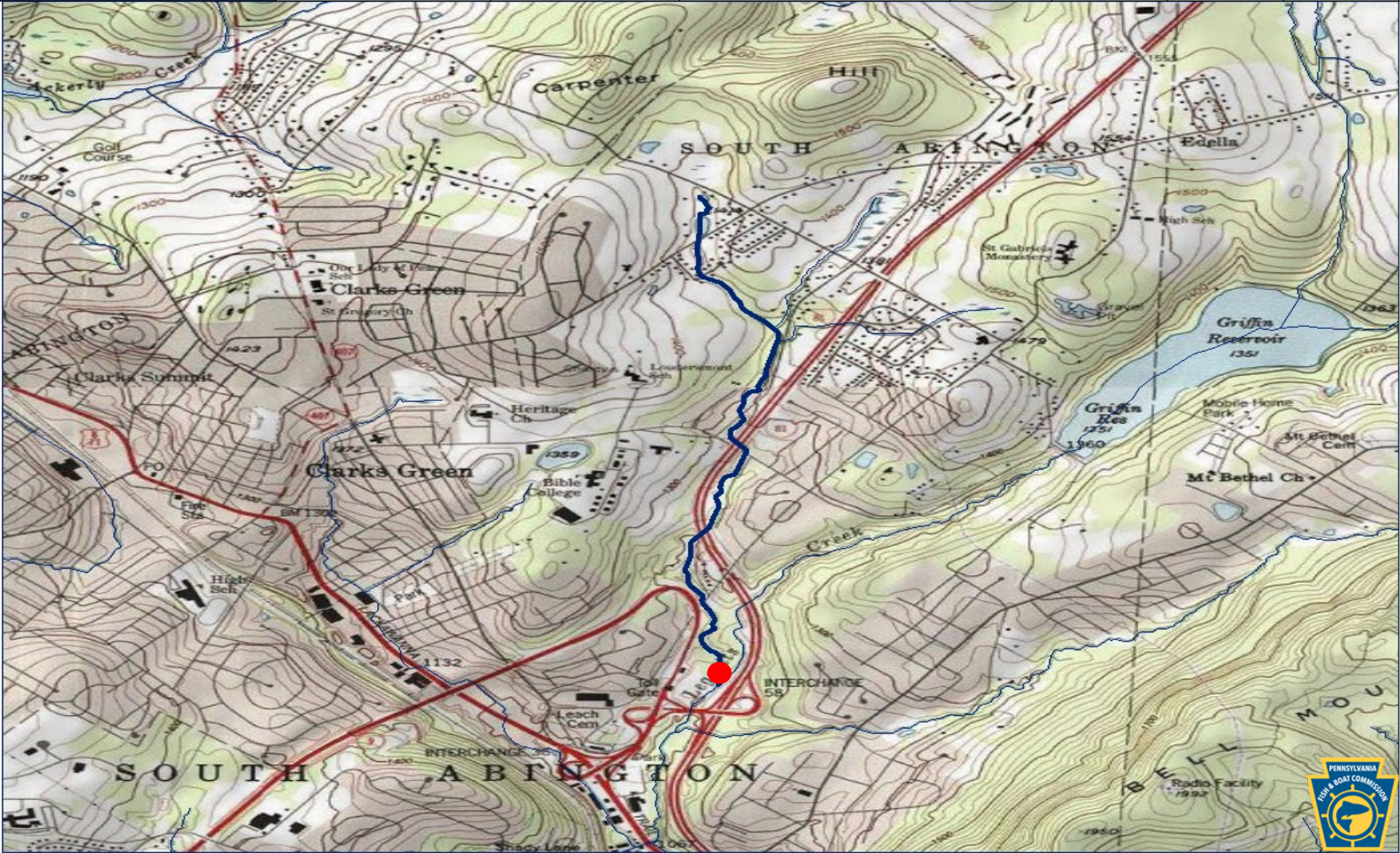
EXHIBIT R

Proposed Wild Trout Additions

County of Mouth	Stream Name	Tributary To	Wild Trout Limits	Site River-mile ●	Species	Catch	Length (inches)
Clearfield	UNT to Cole Run (RM 1.73)	Cole Run	Headwaters to mouth	0.00	Brook	26	3-6



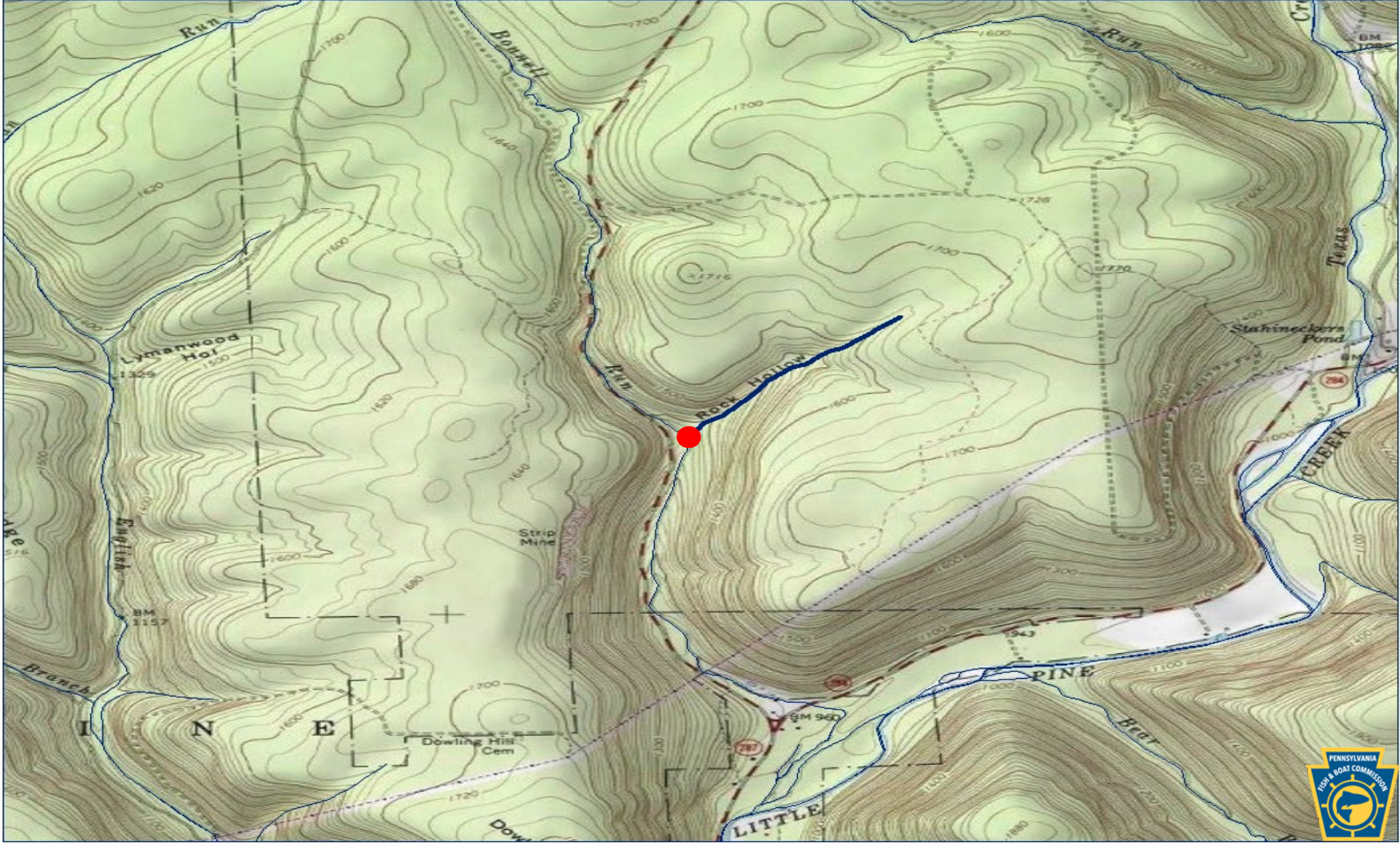
County of Mouth	Stream Name	Tributary To	Wild Trout Limits	Site River-mile ●	Species	Catch	Length (inches)
Lackawanna	Willow Creek	Leggetts Creek	Headwaters to mouth	0.18	Brown	6	5-7



County of Mouth	Stream Name	Tributary To	Wild Trout Limits	Site River-mile	Species	Catch	Length (inches)
Lycoming	Coal Run	Little Pine Creek	Headwaters to mouth	0.02	Brook	28	1-6



County of Mouth	Stream Name	Tributary To	Wild Trout Limits	Site River-mile ●	Species	Catch	Length (inches)
Lycoming	Rock Hollow Run	Bonnell Run	Headwaters to mouth	0.01	Brook	40	1-7



County of Mouth	Stream Name	Tributary To	Wild Trout Limits	Site River-mile ●	Species	Catch	Length (inches)
Tioga	East Branch Stony Fork	Stony Fork	Headwaters to mouth	0.00	Brown	14	1-13



County of Mouth	Stream Name	Tributary To	Wild Trout Limits	Site River-mile ●	Species	Catch	Length (inches)
Tioga	UNT (RM 0.72) to UNT to East Branch Stony Fork (RM 3.50)	UNT to East Branch Stony Fork (RM 3.50)	Headwaters to mouth	0.00	Brown	22	3-9

