



**Commonwealth of Pennsylvania  
Pennsylvania Fish and Boat Commission  
Harrisburg, Pennsylvania**

**MINUTES**

**118th Meeting**

**Volume 67**

**HARRISBURG, PENNSYLVANIA  
MARCH 31, 2016**

# Table of Contents

Call to Order .....	31
Roll Call .....	31
Review and Approval of Minutes from the January 21, 2016 Meeting .....	31
Awards and Presentations .....	31
Executive Director’s Report.....	32
Announcement of Executive Session .....	32
Reports of Commissioner Committees .....	33
Executive and Administrative (Commissioner Mascharka) –.....	33
Boating (Commissioner Ketterer) –.....	33
Fisheries (Commissioner Mascharka) –.....	33
Habitat and Environmental (Commissioner Hussar) –.....	33
Law Enforcement (Commissioner Ali) –.....	33
Legislation and Public Outreach (Commissioner Elliott and Commissioner Sabatose) –.....	33
Public Comment to Commissioners and Staff .....	33
BOATING .....	34
PROPOSED RULEMAKING .....	34
A. Amendments to Sections 93.3 (Application for Boat Registration) and 93.102 (Application Procedure and Contents of Applications for Certificates of Title). .....	34
B. Amendment to Section 111.9 (Bucks County).....	36
FISHERIES .....	37
PROPOSED RULEMAKING .....	37
A. Amendment to Section 65.24 (Miscellaneous Special Regulations) – Crappie at Foster Joseph Sayers Lake, Centre County. ....	37
DESIGNATIONS .....	39
B. Classification of Wild Trout Streams: Proposed Additions and Revisions.....	39
C. Proposed Additions to List of Class A Wild Trout Streams. ....	40
Other New Business .....	41
Time and Place of July 2016 Commission Meeting.....	41
Adjournment.....	41

Commonwealth of Pennsylvania  
Pennsylvania Fish and Boat Commission

Minutes

The 118<sup>th</sup> Meeting of the Pennsylvania Fish and Boat Commission was held on Wednesday and Thursday, March 30 and 31, 2016, at the Pennsylvania Fish and Boat Commission headquarters, Harrisburg, PA 17110.

Commission committees met on March 30 beginning at approximately 9:05 a.m. and on March 31 beginning at approximately 8:30 a.m. The public session for review of this agenda began on or about 10:00 a.m. on March 31.

**Call to Order**

The meeting was called to order by Commission President Edward P. Mascharka III and followed by the Pledge of Allegiance to the Flag.

**Roll Call**

**Members Present**

**Edward P. Mascharka III, President**

**Glade E. Squires, Vice-President**

**Rocco S. Ali**

**G. Warren Elliott**

**Norman R. Gavlick**

**Eric C. Hussar**

**Steven M. Ketterer**

**Leonard L. Lichvar**

**William J. Sabatose**

**Review and Approval of Minutes from the January 21, 2016 Meeting**

A motion was made by Commissioner Ketterer and seconded by Commissioner Squires to approve the January 21, 2016 minutes as written. Motion carried.

**Awards and Presentations**

The Heroes of Water Rescue Award was presented to Virgil Chambers. The Heroes of Water Rescue Award recognizes individuals who make a significant, lasting and continuous impact in the field of water rescue per the guidelines established by the Commission's Water Rescue

Program. The award is based on an extraordinary long-term commitment to the Water Rescue Program rather than an individual lifesaving act. The Commission recognizes the recipient of the award, Virgil Chambers. Through his past efforts to increase awareness about the need for swiftwater and flood rescue training, Virgil inspired other individuals and organizations to embrace the Water Rescue Program. Additionally, the relationships he built with organizations over the years have had a long-lasting impact and helped to establish the level of professionalism and credibility with which the program is viewed today. The success of the Commission's Water Rescue Program is a direct result of Virgil's vision and hard work. Without his early effort, the program would not be where it is at today. Water rescue training saves lives. The Commission thanks Mr. Chambers for his commitment to the program.

Former Commissioner William R. Worobec was recognized for his outstanding leadership and dedication while serving as Commissioner of the Commission from 2006 to 2014.

The Pennsylvania Water Rescue Instructors Association presented a memento to the Commissioners and to Executive Director Arway in thanks for their support of and commitment to the Water Rescue Program.

Commissioner Elliott then spoke about the success of the Commission's 150<sup>th</sup> Anniversary celebration that took place at the State Museum in Harrisburg the previous evening. He mentioned how moved he was by the Commission's Color Guard and by Waterways Conservation Officer Darrin Kephart's speech. Commissioner Elliott asked Colonel Britcher to convey the Commissioners' appreciation to the Color Guard and to Officer Kephart.

### **Executive Director's Report**

The "January – March 2016 Quarterly Report" (Exhibit A) was provided to Commissioners. Director Arway took an opportunity to mention and reflect back on the prior evening's 150<sup>th</sup> Anniversary celebration. Director Arway expressed thanks to staff for their hard work and to Governor Tom Wolf, Mrs. Wolf, Lieutenant Governor Mike Stack, Senate members and House members for their resolutions and support in making it a successful event. A wall at the Commission's headquarters will be reserved to display items commemorating the anniversary. 150<sup>th</sup> Anniversary commemorative coins were then provided to the Commissioners. Commission President Mascharka extended his thanks to everyone for a great event.

### **Announcement of Executive Session**

Commissioner Mascharka announced that an executive session was held on March 30 at 7:40 a.m. to discuss litigation and real estate matters. The Board then moved into a short executive briefing and adjourned at approximately 8:30 a.m.

### **Reports of Commissioner Committees**

#### **Executive and Administrative (Commissioner Mascharka) –**

The Executive and Administrative Committee met on Wednesday, March 30, at approximately 9:10 a.m. Steve Kralik provided a review of the evening 150<sup>th</sup> Anniversary celebration events. Ted Walke spoke of a premier showing of the new Commission video. Multi-year license renewal reminders were discussed, and Tom Allen provided a review of the Southwick Report. A public outreach item included a presentation by Carl Richardson on female angler recruitment, retention and reactivation efforts.

#### **Boating (Commissioner Ketterer) –**

The Boating Committee met on Thursday, March 31, at approximately 8:45 a.m. Agenda items were discussed, and a review of the Water Rescue Program was provided.

#### **Fisheries (Commissioner Mascharka) –**

The Fisheries Committee met on Wednesday, March 30, at approximately 2:00 p.m. Agenda items were discussed. A trout production update was provided by Tom Cochran. Proposed crappie regulations on Pymatuning Reservoir were discussed.

#### **Habitat and Environmental (Commissioner Hussar) –**

The Habitat and Environmental Committee met on Wednesday, March 30, at approximately 11:40 a.m. Ellen Shultzabarger, Pennsylvania Department of Conservation and Natural Resources, spoke regarding the Pennsylvania Natural Diversity Inventory explorer environmental review tool. Presentations were provided on the Pipeline Infrastructure Task Force and the Conococheague Habitat Project. Ben Lorson and Kris Kuhn provided an update on habitat enhancement project monitoring.

#### **Law Enforcement (Commissioner Ali) –**

The Law Enforcement Committee met on Thursday, March 31, at approximately 8:30 a.m. Updates were given on the Fish Kill hotline, the 21<sup>st</sup> Waterways Conservation Officer class, and boat registration courtesy decals.

The Committee also acted upon proposed revocations. The Committee revoked the fishing privileges of one individual for a period of two years.

#### **Legislation and Public Outreach (Commissioner Elliott and Commissioner Sabatose) –**

The Legislation and Public Outreach Committee met on Wednesday, March 30, at approximately 2:30 p.m. A legislative update included an overview of Senate Bill 1168 by Senator John Eichelberger. Senate Bill 1168 gives the Commission authority to establish its own fees for fishing licenses and permits, boat registrations, and other categories. Michele Jacoby provided a history review, including snapshots, of lakes, dams and numerous Commission engineering projects.

### **Public Comment to Commissioners and Staff**

There were no comments or questions from the public.

## **BOATING** **PROPOSED RULEMAKING**

A. Amendments to Sections 93.3 (Application for Boat Registration) and 93.102 (Application Procedure and Contents of Applications for Certificates of Title).

Commentary:

On April 27, 2012, the U.S. Coast Guard amended its regulations related to numbering undocumented vessels and reporting boat accidents when it issued changes to 33 CFR Parts 173, 174, 181 and 187. These changes align and modernize terminology used in the Standard Numbering System (SNS), the Vessel Identification System, and accident reporting; require verification of vessel hull identification numbers; require SNS vessel owners to provide personally identifiable information; and provide flexibility for states and territories in administering these regulations. Together, the changes are intended to improve boating safety efforts, enhance law enforcement capabilities, clarify requirements for all stakeholders and promote the Coast Guard strategic goals of maritime safety and security. As such, states have until January 1, 2017 to implement these changes.

Since 2012, the Commission has been working on effecting the necessary changes to its systems to be in compliance with the amended Coast Guard regulations. Significant changes needed to be coded into our registration and titling system (RATS) and its accompanying database. Coordination with the Department of Revenue was required to revise the REV-336 Instruction for Application for Pennsylvania Boat Registration and/or Boat Title form.

The majority of the required updates reflect nomenclature and vessel data category grouping changes and are considered as “housekeeping.” Among these changes is standardizing how all states will now define “Vessel Type.” Hull material has been expanded to include Rubber/Vinyl/Canvas instead of referring to this class of hull material as “Other.” The Coast Guard also relabeled data categories. What we previously referred to as “Propulsion Type” is now called “Engine Drive Type.” This category, which identifies a boat’s engine drive, includes the terms, Inboard, Outboard, Pod Drive, Stern Drive and Other. In addition, the Coast Guard refined how states categorize the manner in which a boat will be operated. The Coast Guard now restricts a boat’s reported usage as Pleasure, Commercial Passenger, Livery/Rental, Commercial Fishing, Dealer and Other Commercial Operation.

While these required changes are administrative in nature, the Commission must also collect and provide to the Coast Guard personally identifiable information that uniquely ties a boat to an owner. This will be accomplished by creating a unique identification number for each boat owner by collecting and then combining the vehicle driver’s license of the owner with his or her date of birth. This unique identifier once entered into the system will match the boat’s hull identification number with a single individual instead of simply linking it to a name. This will greatly benefit law enforcement when dealing with lost or stolen boats.

Staff therefore propose that §§ 93.3 and 93.102 be amended to read as set forth in Exhibit B.

The Boating Advisory Board considered these changes at its meeting on February 25, 2016 and recommended that the Commission approve the publication of a notice of proposed rulemaking containing the amendments.

Briefer:

Bernie M. Matscavage, Director, Bureau of Administration

Recommendation:

Staff recommend that the Commission approve the publication of a proposed rulemaking containing the amendments described in the Commentary. If adopted on final rulemaking, these amendments will go into effect on January 1, 2017.

Action:

A motion was made by Commissioner Ketterer and seconded by Commissioner Squires to approve the publication of a proposed rulemaking containing the amendments described in the Commentary. If adopted on final rulemaking, these amendments will go into effect on January 1, 2017. Motion carried.

B. Amendment to Section 111.9 (Bucks County).

Commentary:

In 1997, the Commission enacted several regulations on the Delaware River to mirror New Jersey state law. One of those regulations was the slow, no wake zone on Paunacussing Creek from the mouth to the vicinity of Green Hill Road from 12:01 a.m. on the Friday before Memorial Day until midnight on Labor Day.

A recent review of this regulation found that it was never enacted in New Jersey and is not being enforced by either state. In discussions with the New Jersey State Police (agency with jurisdiction), Commission staff learned that New Jersey has no desire to add this requirement to its boating law. Based on New Jersey's decision and the fact that Pennsylvania has not enforced this regulation in recent history, staff recommend its removal.

Staff propose the following changes to § 111.9:

§ 111.9. Bucks County.

\* \* \*

(d) *Delaware River.*

(1) Boats are limited to slow, no wake speed in the following areas:

\* \* \*

**[(ii) From the mouth of Paunacussing Creek, approximately 3,000 feet to a point in the vicinity of Green Hill Road, effective from 12:01 a.m. on the Friday before Memorial Day until midnight on Labor Day.]**

\* \* \*

**(3) [The requirements in this subsection that affect waters of joint jurisdiction with New Jersey are effective May 1, 1997.**

**(4)] \* \* \***

The Boating Advisory Board considered these changes at its meeting on February 25, 2016 and recommended that the Commission approve the publication of a notice of proposed rulemaking containing the amendments.

Briefer:

Colonel Corey L. Britcher, Director, Bureau of Law Enforcement

Recommendation:

Staff recommend that the Commission approve the publication of a proposed rulemaking containing the amendments described in the Commentary. If adopted on final rulemaking, these amendments will go into effect on January 1, 2017.

Action:

A motion was made by Commissioner Ketterer and seconded by Commissioner Hussar to approve the publication of a proposed rulemaking containing the amendments described in the Commentary. If adopted on final rulemaking, these amendments will go into effect on January 1, 2017. Motion carried.



## **FISHERIES**

### **PROPOSED RULEMAKING**

#### A. Amendment to Section 65.24 (Miscellaneous Special Regulations) – Crappie at Foster Joseph Sayers Lake, Centre County.

##### Commentary:

Foster Joseph Sayers Lake is located in Centre County and currently managed under panfish enhancement regulations for Black and White Crappie (9-inch minimum size limit and 20 fish/day creel limit). While there has been an increase in the trap net catch of legal-size crappie post panfish enhancement regulations, the proportion of legal-size fish is still relatively low at approximately 8%. The majority of adult fish are in the 7-inch and 8-inch length groups, just under the legal size limit. Age and growth analyses for crappie indicate an overall reduction in growth rates, especially for these size groups. Angler Use, Harvest, and Opinion surveys conducted at the lake indicate high angler effort directed towards crappie with high catch rates but reduced harvest under panfish enhancement regulations. In addition, angler satisfaction has slowly declined with both the number and size of crappie caught.

The current status of the crappie fishery is not satisfactory to many anglers and may be improved through an alternate regulation. Sayers Lake is one of the most productive reservoirs in the state and has the ability to produce a higher quality crappie fishery than currently exists.

Staff recommend that the daily creel limit be reduced from 20 fish/day to 10 fish/day and propose a change in the number of fish both over and under nine inches that can be harvested to better manage the population from overexploitation while also being acceptable to anglers. The proposed regulation will allow anglers to harvest 10 crappies/day, of which no more than five crappies may be greater than or equal to nine inches in length. For example, anglers will be able to harvest 10 crappies less than nine inches, or nine crappies less than nine inches and one crappie greater than or equal to nine inches, or eight crappies less than nine inches and two crappies greater than or equal to nine inches, and so on. Under this new regulation, anglers will have a reasonable expectation of harvesting 10 crappies/day should they choose to do so, while still providing some additional protection to the larger fish in the population. This is not the case under the current regulation. The creel limit reduction from 20 fish to 10 fish is designed to prevent an overharvest given the number of anglers that are expected to harvest fish under a less restrictive length limit.

Staff interviewed 111 ice anglers on January 30, 2016 to obtain their feedback on a regulatory change. A significant (74%) majority were in favor of a new regulation. A public information session was also held on February 23, 2016 at Bald Eagle State Park to gain additional angler input. Attendees were split between regulation options and preferred those that allowed more crappies to be harvested. Following the meeting, staff conducted data reviews and modeling of the various regulatory options and arrived at the proposed regulation. This will allow an increased opportunity for harvest while

providing sufficient protection for an increased number of fish to reach quality size exceeding nine inches.

Staff therefore propose that § 65.24 be amended as follows:

§ 65.24. Miscellaneous special regulations.

The following waters are subject to the following miscellaneous special regulations:

<i>County</i>	<i>Name of Water</i>	<i>Special Regulations</i>
***	***	***
<b><u>Centre</u></b>	<b><u>Foster Joseph Sayers Lake</u></b>	<b><u>Crappie – 10 fish daily creel limit of which no more than 5 fish may be greater than or equal to 9 inches in length</u></b>
***	***	***

Briefer:

Jason Detar, Chief, Division of Fisheries Management

Recommendation:

Staff recommend that the Commission approve the publication of a notice of proposed rulemaking containing the proposed amendment described in the Commentary. If adopted on final rulemaking, this amendment will go into effect on January 1, 2017.

Action:

A motion was made by Commissioner Squires and seconded by Commissioner Elliott to approve the publication of a notice of proposed rulemaking containing the proposed amendment described in the Commentary. If adopted on final rulemaking, this amendment will go into effect on January 1, 2017. Motion carried.

## DESIGNATIONS

### B. Classification of Wild Trout Streams: Proposed Additions and Revisions.

#### Commentary:

The Department of Environmental Protection's regulations at 25 Pa. Code § 105.1 define the term "wild trout stream" as "a stream identified as supporting naturally reproducing trout populations by the Fish and Boat Commission under 58 Pa. Code § 57.11 (relating to listing of wild trout streams)." This term has regulatory significance because wetlands that are located in or along the floodplain of the reach of a wild trout stream and the floodplain of streams tributary thereto are considered "exceptional value" and are thus entitled to the highest level of protection.

The Commission adopted a statement of policy at 58 Pa. Code § 57.11 that sets forth the basis for the classification of streams supporting the natural reproduction of trout. Under § 57.11, it is the policy of the Commission to accurately identify and classify stream sections supporting naturally reproducing populations of trout as wild trout streams. The listing of a stream section as a wild trout stream is a biological designation that does not determine how the stream is managed. The statement of policy provides that the Commission's Fisheries Management Division will maintain the list of wild trout streams and that the Executive Director, with approval of the Commission, will from time to time publish the list of wild trout streams in the *Pennsylvania Bulletin* and solicit public comments.

Staff recommend the addition of 99 new waters to the Commission's list of wild trout streams and revisions to the section limits of five waters. These changes are the result of recent surveys conducted on these waters. Exhibit C provides information on the locations and a data summary for each of these waters. Surveying unassessed waters and documenting wild trout populations are consistent with the Commission's Strategic Plan for Management of Trout Fisheries in Pennsylvania, the statewide Strategic Plan and the agency's Resource First philosophy.

A notice of proposed designations was published at 46 Pa. B. 527 (January 23, 2016) (Exhibit D). The Commission received a total of 19 public comments regarding the proposed designations – 11 support all of the proposed designations, seven support the designation of specific waters and one is neutral. Copies of all public comments have been provided to the Commissioners.

#### Briefer:

Jason Detar, Chief, Division of Fisheries Management

#### Recommendation:

Staff recommend that the Commission add 99 new waters to the Commission's list of wild trout streams and revise the section limits of five waters as described in the Commentary. If approved, these additions and revisions will go into effect upon publication of a second notice in the *Pennsylvania Bulletin*.

#### Action:

A motion was made by Commissioner Sabatose and seconded by Commissioner Hussar to add 99 new waters to the Commission's list of wild trout streams and revise the section limits of five waters as described in the Commentary. These additions and revisions will go into effect upon publication of a second notice in the *Pennsylvania Bulletin*. Motion carried.

### C. Proposed Additions to List of Class A Wild Trout Streams.

#### Commentary:

Pursuant to 58 Pa. Code § 57.8a (relating to Class A wild trout streams), it is the Commission's policy to manage self-sustaining Class A wild trout populations as a renewable natural resource to conserve that resource and the angling it provides. Class A wild trout populations represent the best of Pennsylvania's naturally reproducing trout populations. Criteria developed for Class A Wild Trout populations are species specific. Wild Trout Biomass Class Criteria include provisions for wild Brook Trout, wild Brown Trout, mixed wild Brook and Brown Trout, wild Rainbow Trout, mixed wild Brook and Rainbow Trout and mixed wild Brown and Rainbow Trout populations.

Staff recommend the addition of 23 stream sections to the Commission's list of Class A wild trout streams. These changes are the result of recent surveys conducted on these waters. Exhibit E provides information on the locations and a data summary for each of these waters.

A notice of proposed designation containing a number of stream sections including Laurel Run, Clearfield County, from the headwaters to Simeling Run (2.80 miles), was published at 45 Pa. B. 6647 (November 14, 2015). At its January 2016 meeting, the Commission acted on the other stream sections but voted to defer action on Laurel Run until the March 2016 meeting due to concerns regarding a possible conflict with a children's area on the stream that is sponsored by the West Decatur Sportsman's Club. Staff met with the representatives of the Club on January 28, 2016, and the Club's concerns were resolved.

A second notice of proposed designation containing 22 stream sections was published at 46 Pa. B. 532 (January 23, 2016) (Exhibit F). The Commission received a total of 15 public comments regarding the proposed designations – 11 support all of the proposed designations and four support the designation of specific waters. Copies of all public comments have been provided to the Commissioners.

#### Briefer:

Jason Detar, Chief, Division of Fisheries Management

#### Recommendation:

Staff recommend that the Commission add 23 stream sections to its Class A wild trout streams list as described in the Commentary. If approved, these additions will go into effect upon publication of a second notice in the *Pennsylvania Bulletin*.

#### Action:

A motion was made by Commissioner Sabatose and seconded by Commissioner Ali to add 23 stream sections to its Class A wild trout streams list as described in the Commentary. These additions will go into effect upon publication of a second notice in the *Pennsylvania Bulletin*. Motion carried.

**Other New Business**

Commissioner Lichvar extended an invitation to the Somerset Lake Fest to be held on June 4, 2016. Recognition of the Commission's 150<sup>th</sup> Anniversary will occur at the event.

Commissioner Mascharka reminded everyone that events will be held throughout the state this year to commemorate the anniversary and that these events are open to the public. Information on these events will be provided. Commissioner Sabatose expressed his appreciation to staff for their ongoing dedication to the Commission and their hard work for the 150<sup>th</sup> Anniversary celebration. He said staff are second to none. Commissioner Mascharka expressed his appreciation as well.

**Time and Place of July 2016 Commission Meeting**

The next meeting will be held on July 11-12, 2016 in Harrisburg.

**Adjournment**

A motion was made by Commissioner Squires and seconded by Commissioner Lichvar to adjourn the meeting at approximately 10:45 a.m. Motion carried.

*Guests*  
**PENNSYLVANIA FISH AND BOAT COMMISSION**  
**COMMISSION MEETING**  
**March 31, 2016**  
**HARRISBURG, PENNSYLVANIA**

NAME

ADDRESS  
& PHONE #

AFFILIATION

I WISH TO PROVIDE  
PUBLIC COMMENT  
(CHECK HERE!)

None



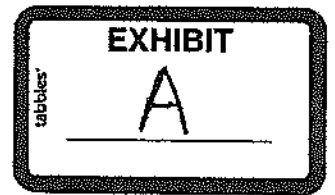
## PUBLIC NOTICES

### **SUNSHINE ACT MEETING NOTICES**

Thursday, March 17, 2016

If you need an accommodation due to a disability,  
please contact the ADA contact name listed below

PA Fish & Boat Commission Meetings, 3/30/2016, 8AM, 1601 Elmerton Ave., HBG., Contact: Teresa Erdman  
717-705-7801, Add'l meeting scheduled at 8AM on 3/31/2016.



## January – March 2016 Quarterly Report Strategic Plan Implementation

The following updates include the major activities or accomplishments during the quarter that further the July 2014 – June 2017 PFBC Strategic Plan. The bulleted list does not include every detail about what is being done on a particular goal, just the highlights that help to track implementation.

If there is nothing listed for a particular goal, either there was nothing major to report during the quarter, or work has yet to commence on the goal.

Overall, please note that the quarterly report is intended to be a tracking tool for the strategic plan rather than an auditing tool.

### Funding

**Goal 1A: Implement a Spending Reallocation Plan within which the Commission does not spend more than it generates in revenue each fiscal year and maintains agency administrative and support services necessary to deliver programs and services.**

- A. Through June 2017, implement, review, and update the Spending Reallocation Plan (SRP) to reflect evolving fiscal realities.
- B. By July 2015, present updated SRP to the Board of Commissioners.
- C. Through June 2017, work with PFBC staff and partners to identify and implement projects using restricted revenue account funds to address settlement agreement conditions and PFBC priorities.
  - *Completed RFP for the use of the Peach Bottom restricted account funds. Proposals are due April 30. Funds will be used for habitat improvement projects, wetland restoration/creation, and implementation of agricultural BMPs and dam removals in Lancaster and York Counties.*
  - *Began work on selection of projects and coordination with partners for use of SOS funds on tributaries to the Susquehanna River.*
  - *The Commission approved the establishment of the Statewide Habitat Improvement and Fisheries Management Grant Program. This program authorizes the Executive Director to award individual grants in the amount of \$100,000 or less per grantee per project per year, utilizing the various funding sources such as settlement agreements for natural resource damages associated with pollution cases; pass-through grants from Federal and other partners; voluntary mitigation for water withdrawals; environmental mitigation for permitting development projects; and settlement agreements associated with the relicensing of hydropower projects. Potential projects for which these funds can be used include, but are not limited to, dam removals, habitat restoration, water quality improvement, stocking fish, translocating mussels, studies, educational and outreach efforts, and other projects to protect, conserve and enhance the Commonwealth's aquatic resources. Limitations on how the funds may be spent will be set by the applicable agreement or law. For grants exceeding \$100,000, staff will seek separate Commission approval.*



**Goal 1B: Increase revenues.**

- A. Through June 2017, implement operational decisions to increase revenues.
1. Continue to grow Natural Gas and Water Access programs.
  2. By June 2017, develop, implement, and evaluate annual marketing campaign plans designed to increase license sales (and corresponding federal reimbursements) by 10% through the end of license year 2017.
    - *Worked with Southwick Associates to prepare the final report of their evaluation of the LY 2015 license changes and the impact of multi-year license sales.*
  3. By July 2015, secure dedicated funding to support the water rescue program.
- B. Through June 2017, advocate for legislative solutions to maintain and increase revenues.
1. Identify, develop, and advocate for state legislative opportunities to maintain and increase agency revenues.
    - *Worked with Senator Brewster and his staff on the introduction of SB 1103 to increase the price of fishing licenses and permits.*
    - *Worked with Senators Eichelberger and their staff on a co-sponsorship memo for a bill that would give the PFBC the authority to set its own fees. Explained the idea to other Senate offices, with the result being that 20 Senators (including Senators Eichelberger and Wozniak) are sponsoring the bill. Drafted text for the legislation and will soon be sharing it to be drafted as a bill.*
    - *Worked with the Governor's Office, other agencies, and non-governmental partners on the framework for a Growing Greener 3 initiative.*
  2. In cooperation with the Association of Fish and Wildlife Agencies (AFWA), advocate for federal legislation to maintain and increase agency revenues.
    - *Participated in Teaming With Wildlife Fly-In to build support for funding of the State and Tribal Wildlife Grants program and to achieve dedicated and sustained funding.*
- C. Through June 2017, promulgate regulatory changes to increase revenues.
1. By January 2015, require senior resident lifetime license holders to purchase a trout/salmon permit annually to fish for trout.

## Conservation

### Goal 2: Protect, conserve, and enhance aquatic resources and habitats.

- A. By January 2015 complete a revision to the *Strategic Plan for Management of Trout Fisheries in Pennsylvania* to include the following:
  - *Completed the 2016-2017 Strategic Plan for Management of Trout Fisheries in Pennsylvania.*
  - *Initiated the Keystone Select Stocked Trout Program. Stocking of fish for this program began on March 1, 2016.*
2. Through June 2017, continue efforts to improve Pennsylvania's tailwater trout fisheries.
3. Immediately begin implementation of recommendations from the stocked trout efficiency study.
4. By December 2015, design an angler survey to provide a statewide assessment of angler use, angler catch, angler opinions, and an economic contribution of trout angling on trout stocked lakes in order to make informed decisions regarding future trout stocking allocations in lakes.
  - *Completed draft design of an angler survey to provide a statewide assessment of angler use, catch, opinions, and an economic contribution of trout angling on trout stocked lakes.*
5. By December 2015, complete evaluations of all current fingerling stocking efforts and provide recommendations for future implementation of the program.
- B. Through June 2017, continue implementation of river management plans for the Delaware, Susquehanna, and Three Rivers systems.
  1. Efforts specific to all three river systems will include:
    - a. Maintenance of long-term adult and young-of-year Smallmouth Bass data sets.
    - b. Sampling requirements specific to meeting objectives outlined in the species-specific warmwater management plans for Muskellunge, Walleye, and Catfish.
  2. Efforts specific to the Susquehanna River will include:
    - a. Continued participation on interagency technical committees assessing water quality of the Susquehanna River and the impacts to the Smallmouth Bass population.
      - *First post-CADDIS report Susquehanna River Technical Committee meeting was held on Feb 3. Future direction of study efforts on the Susquehanna River was among the topics discussed.*
    - b. With partners, implement a fish community sampling procedure to more broadly track the condition of the fishery.
      - *Continue to coordinate efforts with PADEP.*
    - c. By June 2017, identify a method and criteria to determine the impairment status of the river.
      - *DEP Integrated Water Quality Monitoring and Assessment report is anticipated in the near future.*

3. Efforts specific to the Three Rivers will include cooperation with Ohio River states to expand our knowledge regarding the expansion of Asian carp in the Ohio River system and reduce or eliminate the threat to the river's ecology.
4. Efforts specific to Delaware River will include:
  - a. Annual monitoring of American Shad populations at historic stations.
  - b. American Shad spawning activities to support restoration efforts.
- C. By January 2015, complete the 2nd edition of the Lehigh River Fisheries Management Plan.
- D. Through June 2017, implement gamefish management plans for Muskellunge, Walleye, and Catfish.
- E. By June 2017, complete the development of a strategic plan for the management of black bass in Pennsylvania.
  - *Completed draft angler opinion survey as part of the strategic plan for the management of black bass in Pennsylvania.*
- F. By June 2017, facilitate or complete population inventories and home range assessments for Timber Rattlesnake, Blanding's Turtle, Eastern Massasauga, Bog Turtle, Eastern Mud Salamander, Rough Green Snake, Broadhead Skink, New Jersey Chorus Frog, Southern Leopard Frog, Kirtland's Snake, Northern Cricket Frog, Eastern Redbelly Turtle, Eastern Pearlshell, Dwarf Wedgemussel, Bluebreast Darter, Tippecanoe Darter, Gilt Darter, Iowa Darter, Eastern Sand Darter, Spotted Darter, Black Bullhead, Bowfin, and Horneyhead Chub.
  - *Site assessments conducted in 2015 have been reviewed (90), and habitat management work continues for the Timber Rattlesnake.*
  - *Focal Teams as part of the PA Amphibian and Reptile Survey (PARS) for the Blanding's Turtle, Eastern Mud Salamander, Rough Green Snake, Broadhead Skink, Northern Cricket Frog, Kirtland's Snake, and New Jersey Chorus frog continue to be developed and actively survey for these species. No new locations have been found in this quarter; however this is not unexpected since most of this period was during a time of year these species are largely secretive or inactive. Work is currently being done on polygons outlining potential search sites as a tool for certain Focal Species Teams in the 2016 spring season.*
  - *Inventory data from 2015 for all of the target Species of Greatest Conservation Need (SGCN) reptile and amphibian species was submitted to the PFBC and is being processed for inclusion in the Pennsylvania Natural Heritage Program database this quarter.*
  - *Museum records for Southern Leopard Frog were examined for species determination in conjunction with a regional examination of this species and its relationship to the newly determined Atlantic Coast Leopard Frog.*
  - *Section 6 grant: Year 2 of the Bog Turtle inventory (Northampton, Lehigh, Monroe, and Carbon) was initiated. Habitat polygons are being developed in data gap areas through aerial photograph analysis and historic data compilation.*
  - *Contractors are working with PFBC, DCNR Bureau of State Parks and Natural Land Trust regarding site management plans for Bog Turtle habitat survey work.*
  - *Contractors are reaching out to landowners of identified potential Bog Turtle habitats and planning for presence/absence surveys in spring 2016 in Tulpehocken and Quittapahilla watersheds.*

- *A new Section 6 grant was obtained and the contract finalized to expand the search for Dwarf Wedgemussel in additional tributaries of the Delaware.*
  - *Assessments have been started for Blacknose Shiners, Popeye Shiners, Ghost Shiners, River Shiners, and Pugnose Minnow. Surveys in Western Pennsylvania have been conducted to address data gaps for these rare fish species with unknown statuses, and fieldwork is being planned in the upcoming sampling season.*
  - *Several snakes are being tracked (via radio telemetry) to assess habitat use of managed habitat for hibernation as part of the Eastern Massasauga restoration project.*
  - *The PFBC partnered with several states and other NGO partners on a nationally competitive State Wildlife Grant project for the Blanding's Turtle. The proposal was submitted in February 2016. If funded, the PFBC will develop and start to implement a population augmentation program, and continue to survey the historic range of the Blanding's turtle in PA.*
- G. Through June 2017, continue implementation of statewide action plans for the following species: Eastern Pearlshell Mussel, Bog Turtle, Eastern Massasauga Rattlesnake, and Timber Rattlesnake.
- *The Eastern Pearlshell assessment project was extended again to allow additional time for data analysis and completion of genetics work. New occurrences of the mussels at two locations in Schuylkill County have been documented.*
  - *Contractors continue to write management plans and conduct habitat restoration on private lands, make contact with private landowners regarding Bog Turtle conservation, and compile Bog Turtle data for a regional database. The U.S. Fish & Wildlife Services' National Competitive State Wildlife Grant Program awarded the grant titled "Multistate Recovery Actions for the Bog Turtle and Associated Headwater Wetland Species of Greatest Conservation Need" to Pennsylvania and its partners in June 2015. Project partners are going through the process of activating the federal grant and finalizing contracts with project partners and contractors.*
  - *The Timber Rattlesnake monitoring strategy project with East Stroudsburg University is underway. The PFBC project leader met twice with the East Stroudsburg partners and most recently met with the Penn State partners to develop the statistical aspects of monitoring. Sampling protocols are being drafted and training is being developed for the next quarter.*
- H. By December 2014, research and finalize statewide action plans for the Salamander Mussel and Chesapeake Logperch. Through June 2017, implement these plans.
- *Annual work plans have been developed for the Salamander Mussel and Chesapeake Logperch Species Action Plans.*
- I. By June 2015, work with other members of the Pennsylvania Natural Heritage Partnership to complete the upgrade to the Pennsylvania Natural Diversity Inventory environmental review tool.
- *The rollout date for this upgrade is now projected for March 2016. DCNR and contractors have continued to update and involve PFBC staff in ongoing development of the PNDI tool upgrade. Training for use of the upgraded PNDI*

*tool was given to the Division of Environmental Services staff in January. Several staff are actively reviewing and testing the new tool and providing feedback to the developers. Natural Diversity Section staff have drafted updates to the decision matrix that drives the PNDI tool for fish, mussels, herps, and aquatic invertebrates. One WebEx conference call with the PNDI development committee was attended in this quarter.*

- J. By June 2017, assist the Pennsylvania Department of Environmental Protection and other governmental agencies with the development of policies and reservoir operation procedures that limit alteration of natural flow regimes to levels that maintain critical species, habitats, and ecological conditions.
- K. By September 30, 2015, together with partners, complete a new State Wildlife Action Plan.
- L. Through June 2017, continue to conduct the following permit reviews: Species Impact; Scientific Collector; Threatened and Endangered Species; Nongame Special; Venomous Snake; Amphibian and Reptile Organized Hunt; Commercial Snapping Turtle; Water Obstruction and Encroachment; Triploid Grass Carp; Mining; Drawdown; Water Allocation; FERC Hydropower; 316(a) Clean Water Act Thermal Variance; 316(b) Clean Water Act Impingement and Entrainment; and select Algicide, Herbicide or Fish Control Chemical in Waters of the Commonwealth.
  - *Species Impact Reviews conducted: 363*
  - *Scientific Collector Permits and amendments reviewed and issued: 78*
  - *T&E Species Permits reviewed and issued: 11*
  - *Nongame Special Permits reviewed and issued: 3*
  - *Venomous Snake Permits issued: 124*
  - *Commercial Snapping Turtle Permits issued: 6*
- M. By June 2017, sample at least 2,000 prioritized, un-inventoried streams that have been identified by Commission staff as most at risk from the effects of human activities, and continue to forge partnerships to augment Commission sampling efforts.
- N. Through June 2017, continue the development of a PFBC sampling protocol manual to ensure consistent data collection techniques for waterways.
  - 1. By December 2014, complete documentation of PFBC-approved sampling protocols for large rivers.
  - 2. By December 2015, complete documentation of PFBC-approved sampling protocols for lakes.
  - 3. By December 2016, complete documentation of PFBC-approved sampling protocols for herptiles.
    - *Individual species sampling protocols continue to be compiled. Several are under review for potential updating and revision, and others are under development. Lists of peer reviewers have been generated.*
- O. Through June 2017, annually address the following habitat improvement goals:
  - 1. Refine the stream and lake prioritization approaches to guide habitat improvement work. Work with partners to avoid duplication of efforts and maximize cooperation to address common goals.
  - 2. Develop and implement lake habitat improvement plans into all PFBC high-hazard dam rehabilitation efforts.

- *Staff worked with Save Colyer Lake on the Colyer Lake Fish Habitat Project which involved over 300 rock and wood habitat structures placed in November. H.R.I. Inc. donated over \$10,000 worth of rock rubble used in the construction. Graymont Quarry donated 300 tons of pulverized limestone to improve water alkalinity.*
3. Develop a plan to prioritize dam removals and culvert passage objectives statewide and facilitate fish passage through the removal of 25 dams, improved culvert installations, or the installation of fishways.
- P. By January 2016, simplify fishing regulations.

## **Recreation**

**Goal 3A: Engage in targeted education and outreach activities that address the five key elements of fishing and boating participation and engage partners to enhance the Commission's efforts through the multiplier effect at the local level.**

- *Established a workgroup of female PFBC employees that will provide feedback to the Commission on efforts related to recruitment, retention, and reactivation.*
  - *Had direct contact with more than 20,000 customers attending one of the 13 sport shows during the period. PFBC staff provided information resources that connect customers with fishing and boating opportunities. Staff also responded to visitor's questions.*
- A. Through June 2017, develop and implement annual plans for delivering training and instructional resources to sportsmen's clubs, conservation organizations, and outdoor recreation providers for Family Fishing, SMART Angler, women's, and other effective programs at the local level.
- B. Through June 2017, maintain Fishing Tackle Loaner Program to make equipment accessible for group or individual loan.
- C. Through June 2017, develop and implement annual plans to present fishing opportunities in appealing and convenient "packages" such as PA's Best Fishing Waters, Family Fishing Festivals, and mentored youth opportunities.
- D. Through June 2017, develop and implement annual plans for mentoring programs, with focused opportunities (e.g., different species or seasons) and increased outside partnership engagement.
- *Updated Mentored Youth Trout (MYT) communication plan to reflect 2016 actions.*
  - *Initiated promotional efforts for the two MYT Days, scheduled for one week prior to respective Opening Day.*
  - *Developed and distributed MYT informational sheet at shows and other events.*
  - *Updated web based sources of information on MYT.*
2. Increase lead-in and follow-up contacts for mentored fishing opportunities (such as promotions, partnerships, surveys, newsletters).
3. Incorporate recruitment and retention elements into mentoring program promotions and partnerships.
4. By July 2016, assess the overall effectiveness of the Mentored Youth Fishing Day program.
- E. Through June 2017, use increased understanding of customer demographics, current research, and customer trends to enhance recruitment and retention of anglers and boaters by identifying targeted segments for outreach and education.

**Goal 3B: Conduct outreach and informational efforts designed to reduce boating-related casualties, maintain water rescue program to provide necessary training for emergency response personnel to safely and effectively respond to water-related emergencies, and pursue new public access as resources allow.**

- A. Through June 2017, annually identify and implement specific strategies to reduce casualties of targeted user groups.

- B. By January 2015, use point-of-sale messaging to increase awareness of minimum boating safety legal requirements.
- C. Through June 2017, continue to play a leadership role in the Pennsylvania Helicopter Aquatic Rescue Team (PA-HART) program.
- D. By July 2015, establish BLE swiftwater strike team as a certified Type 1 response team.
- E. Through June 2017, annually conduct Operation Dry Water, a statewide boating safety and boating under the influence saturation detail.
- F. Through June 2017, administer the Floating Structure and Aids to Navigation program.
- G. Through June 2017, administer Lake Erie Access Program and, as resources allow, pursue other public access opportunities consistent with Pennsylvania's Fishing and Boating Access Strategy.
  - *The Commission approved the acquisition of three Public Fishing Access and Conservation Easements and one property acquisition under the Lake Erie Access Program. The four properties will provide approximately 4,055 linear feet of public access.*

**Goal 3C: Ensure that fish production levels are met annually to optimize fishing opportunities.**

- A. Through at least July 2015, continue to operate all 13 state fish hatcheries.
  1. Trout Culture: Annually produce and stock up to 3.2 million adult trout or 1.9 million pounds to stock in the Commonwealth.
    - *Produced and stocked 132,618 yearling Rainbow Trout-Steelhead.*
    - *Produced and stocked 1.15 million adult trout and 57,000 fingerling trout.*
    - *By July 2015, evaluate the public demand and expectations for stocked trout and provide a recommendation on how many trout should be raised.*
  2. Warm/Cool Water Culture: Annually produce warm/cool water species through in house production or acquisition to meet requests to stock species requested by Fisheries Management.
  3. Cooperative Nurseries: Annually produce fish and eggs to supply the needs of the cooperative nurseries throughout the Commonwealth.
- B. Through June 2017, ensure the safe and efficient maintenance and operation of state fish hatcheries while remaining in compliance with environmental regulations and fish health guidelines.
  1. Annually utilize available funding for maintenance and operation of hatcheries and identify budget shortfalls which may lead to fish production decreases.
    - *Completed lighting upgrades, raceway keyway and screen maintenance at Pleasant Mount State Fish Hatchery.*
    - *Continued work to enclose A&B raceway series at Corry State Fish Hatchery to reduce risk of IPN in Brown Trout designated for stocking into Lake Erie basin.*
    - *Completed hatch house water quality improvement project at Union City State Fish Hatchery to reduce nitrogen gas levels in influent water.*
    - *99% complete on Reynoldsdale State Fish Hatchery reconstruction project. Remaining activities include grading, landscaping and seeding in the Spring of 2016.*



- *Continued to develop, modify and install bird exclusion netting at Bellefonte, Benner Spring, Reynoldsdale and Tylersville State Fish Hatcheries.*
  - 2. Consistently maintain and update hatchery permits and perform water quality analysis according to permits.
  - 3. Annually perform fish health inspections, provide diagnostic services, and maintain fish transfer records.
    - *During the quarter, staff performed 8 full or partial fish health inspections conducted 37 diagnostic cases and reviewed 10 fish transfers.*
- C. Through July 2017, maintain and promote existing cooperative nurseries.
1. Through July 2017, increase the presence of cooperative nursery information in the *Pennsylvania Angler and Boater* magazine and the PFBC website.
  2. By December 2016, perform an analysis of existing cooperative nurseries and recommended production levels.
  3. By July 2016, evaluate and recommend improvements to the cooperative nursery application process.

## Internal Resources

**Goal 4: Optimize agency efficiency through continuation of investments in information technology, employee training and development, and infrastructure planning and implementation.**

### A. Information Technology

1. By June 2016, redesign the Commission's website to simplify and enhance ease of navigation.
2. By June 2017, continue to plan for and support IT updates, enhancements, and maintenance of critical business applications to meet the needs and requirements of program areas.
  - a. By September 2014, identify and prioritize essential application enhancements for key business areas. *Complete.*
  - b. By July 2015, develop and implement annual plans for prioritized and funded application enhancements.
    - *Registration and Titling System (RATS) – A new interface between PA Automated Licensing System (PALS) and RATS is being developed that automatically processes boat registration renewal records between the two systems.*
    - *Resource First Portal (RFP) – Application enhancements continue to be made.*
3. Through June 2017, continue to convert business applications to the new .NET/SQL application standard platform as necessary.
  - *Progress continues to be made with conversion of legacy applications.*
4. By July 2015, identify and begin utilizing available partnerships, infrastructure, software, data, and training to provide meaningful and useful information for managers and executive leadership to make critical programmatic, marketing, and business decisions.
  - *This is an ongoing initiative. PFBC works with several other Commonwealth agencies on technology projects.*
5. By June 2017, develop the capability of a GIS layer containing Commission properties.
  - a. By June 2016, validate existing data, through general referencing, on Commission property holdings.
    - *98% of all fee and easement properties have been reviewed and validated.*
  - b. By June 2017, develop GIS layer for Commission properties.
    - *100% of reviewed and validated properties have been made into shapefiles in ArcMap (GIS). These files have been moved to a folder for to be merged into the GIS master file.*

### B. Training and Development

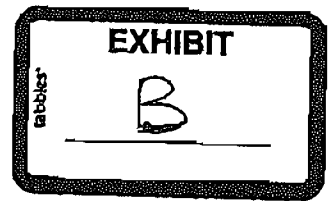
1. Through June 2017, continue to re-invest in employee development opportunities.
2. By June 2016, complete the training of a new class of WCOs.

- C. Through June 2017, continue to implement a comprehensive multi-year Infrastructure Plan for the engineering, maintenance, and development of the Commission's dams, access areas, administrative buildings, hatcheries, marinas, and bridges.
1. Through June 2017, leverage funding sources to complete high-hazard dam repairs.
  2. By March 2015, prioritize access areas that the Commission manages on behalf of the Commonwealth and begin implementing repairs on an established cycle.
  3. By December 2014, complete plan for where and how to house the Commission's Centre County-based staff.
  4. By June 2016, complete plans to optimize Commission field staff into as few locations as possible to meet identified business needs.
  5. By December 2014, complete return on investment analysis of marinas managed by the Commission.
  6. By January 2015, prioritize bridges that the Commission manages on behalf of the Commonwealth and begin implementing repairs on an established cycle.
  7. By June 2017, complete a Commission-wide energy savings analysis.
    - a. By December 2015, complete an energy savings analysis for state fish hatcheries.
      - *Drafts of the energy savings report are being edited and will require additional reviews. This is anticipated to be complete by the end of the second quarter.*

**Other notable activities:**

*Completed the Conewago Creek Pollution Investigation. The responsible party was Miller Chemical and Fertilizer, LLC based in Hanover PA. A fire at the chemical and fertilizer manufacturing facility resulted in the release of a large volume of liquid to a tributary to the South Branch of Conewago Creek. The contaminant released to the waterway was a result of the firefighting suppression effort. This case was settled for a total penalty of \$44,851.69.*

*Continued the water pollution investigation in Bonnel Run in Lycoming County. This case involved a release of frack water through a leaking valve into a wetland/spring seep ecosystem. The material subsequently migrated to an unnamed tributary to Bonnel Run. The responsible party is Anadarko Petroleum Company. PFBC staff have been collecting water quality data since March 2015 on a monthly basis.*



§ 93.3. Application for boat registration.

(a) New registration. Application for a boat registration for a new boat or a used boat that was not previously registered in this Commonwealth shall conform with the following:

(1) Forms. The owner of a boat desiring registration shall apply on Form REV-336, provided by the Commission. The completed form shall be forwarded to the Fish and Boat Commission, Division of Licensing and Registration.

(2) Required information. The applicant shall provide the following information on the application (REV-336) for a boat registration:

(i) The name, mailing address, residence address, phone number, county and zip code of the owner. If there is more than one owner, the principal owner shall be listed first.

(ii) If the owner is an individual, the driver's license number, if any. If the owner is a manufacturer, jobber or dealer, the tax identification number.

(iii) The name of the person from whom the boat was purchased.

[(iii)] (iv) The State registration number, if any, currently assigned to the boat.

(v) Make and model.

[(iv)] (vi) The hull material, such as, wood, steel, aluminum, plastic, or fiberglass, rubber/vinyl/canvas or other.

[(v)] (vii) The full Hull Identification Number (HIN).

[(vi)] (viii) The [make, model and] year built, if known.

[(vii)] (ix) The length of the boat in feet and inches.

(x) The type of boat, such as, air boat, auxiliary sail, cabin motorboat, houseboat, inflatable boat, open motorboat, paddlecraft, personal watercraft, pontoon boat, rowboat, sail only or other.

[(viii)] (xi) The type of [propulsion] engine drive, such as, outboard, inboard, sterndrive, pod drive or [unpowered] other.

[(ix)] (xii) The type of fuel, such as, gas, diesel, electric or other.

(xiii) The type of propulsion, such as, propeller, waterjet, air thrust, manual, sail or other.

[(x)] (xiv) The temporary validation [decal number] expiration date, if one was issued.

[(xi)] (xv) The primary [usage] **operation** such as, pleasure, rental/livery, manufacturer/dealer/jobber, commercial passenger, **charter fishing, commercial fishing, other commercial operation**, and the like.

[(xii)] (xvi) *A certificate of ownership.* For initial registration in this Commonwealth this shall be supported by title, bill of sale, a complete Form PFBC-734 "Affidavit of Purchase/Ownership" or other positive proof of ownership.

[(xiii)] (xvii) The date the applicant completed the form.

[(xiv)] (xviii) The signature of the owners and certification, under penalty of law, that they are the owners of the boat and that the information contained in the application is true and correct.

[(xv)] (xix) Complete Sales and Use Tax information.

[(xvi)] (xx) The date of birth of the primary registrant **and co-registrant**.

(3) Manufacturers, jobbers or dealers. Paragraph (2)[(iv) — (x)] (vi) — xiv) and [(xvi)] (xx) do not apply to manufacturers, jobbers or dealers.

(4) Boat rental business. Paragraph (2)[(viii)] xi and [(ix)] (xii) does not apply to a boat rental business if a motor is not rented with the boat.

(5) Incomplete or incorrect applications. Incomplete or incorrect applications will not be processed until completed and may be returned by the Commission to the applicant or issuing agent.

\* \* \*

§ 93.102. Application procedure and contents of applications for certificates of title.

(a) Boat owners shall apply for a certificate of title on Form REV-336, provided by the Commission. The completed form shall be forwarded to the Commission at the address listed on the application.

(b) The applicant shall provide the following information on the application (REV-336) for a title:

(1) The name, mailing address, residence address, phone number and zip code of the owner. If there are co-owners, the applicants shall provide information relating to both owners and indicate whether the boat is owned as joint tenants with right of survivorship or as tenants in common.

(2) The date of birth of the primary purchaser **and co-owner**.

(3) The name of the person from whom the boat was purchased.

(4) The State registration number, if any, currently assigned to the boat.

(5) The hull material, such as wood, steel, aluminum, plastic, fiberglass, **rubber/vinyl/canvas** or other.

(6) The full Hull Identification Number (HIN).

(7) The make, model and year built, if known.

(8) The length of the boat in feet and inches.

(9) **The type of boat, such as, air boat, auxiliary sail, cabin motorboat, houseboat, inflatable boat, open motorboat, paddlecraft, personal watercraft, pontoon boat, rowboat, sail only or other.**

(10) The type of [propulsion] **engine drive**, such as, outboard, inboard, sterndrive, **pod drive** or [unpowered] **other**.

[(10)] (11) The type of fuel, such as, gas, diesel, electric or [unpowered] **other**.

(12) **The type of propulsion, such as, propeller, waterjet, air thrust, manual, sail or other.**

[(11)] (13) The primary [usage] **operation** such as, pleasure, rental/livery, manufacturer/dealer/jobber, commercial passenger, **charter fishing, commercial fishing, other commercial operation**, and the like.

[(12)] (14) For boats with outboard internal combustion motors, the serial number, the manufacturer's name and the horsepower rating. If there are two motors, the applicant shall provide information for both motors.

[(13)] (15) The names and addresses of each lienholder (in the order of priority).

[(14)] (16) The date of lien encumbrance.

[(15)] (17) The date applicant completed the form.

[(16)] (18) The signature of the owner.

[(17)] (19) Complete Sales and Use Tax information.

\* \* \*

County of Mouth	Stream Name	Tributary To	Wild Trout Limits	Site River-mile	Species	Catch	Length (inches)
Clinton	Bark Shanty Hollow Run	Drury Run	Headwaters To Mouth	0.02	Brook	16	2-7

County of Mouth	Stream Name	Tributary To	Wild Trout Limits	Site River-mile	Species	Catch	Length (inches)
Caribou	Beaver Creek	Black Creek	Headwaters To Mouth	0.00	Brook	23	2-7

**EXHIBIT**

C

tabbles

County of Mouth	Stream Name	Tributary To	Wild Trout Limits	Site River-mile	Species	Catch	Length (inches)
Fayette	Beaver Creek	Meadow Run	Headwaters To Dinner Bell Obiophye Road Bridge	3.28	Brown	42	2-13

County of Mouth	Stream Name	Tributary To	Wild Trout Limits	Site River-mile	Species	Catch	Length (inches)
Clinton	Big Run	Beech Creek	Headwaters To Mouth	0.00	Brook	98	2-9

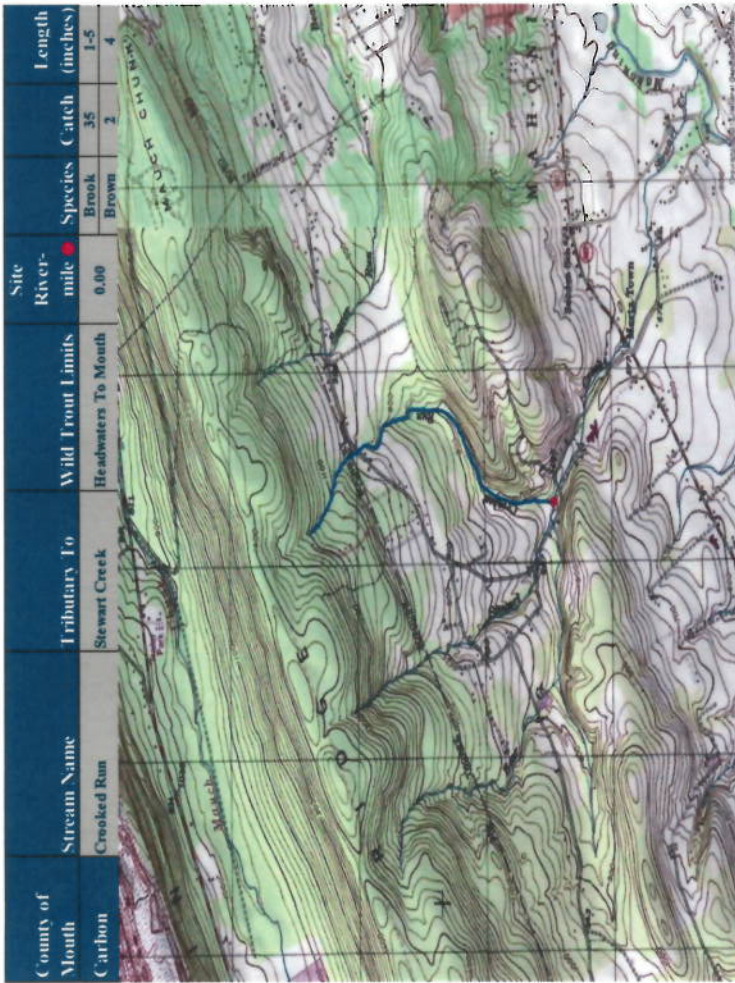
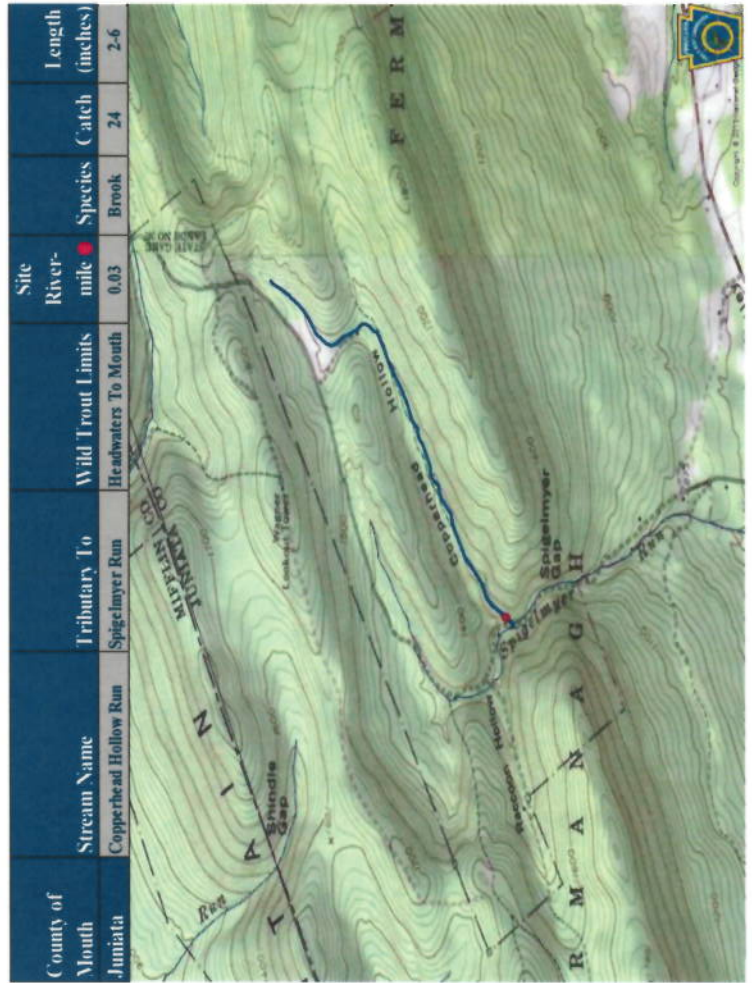
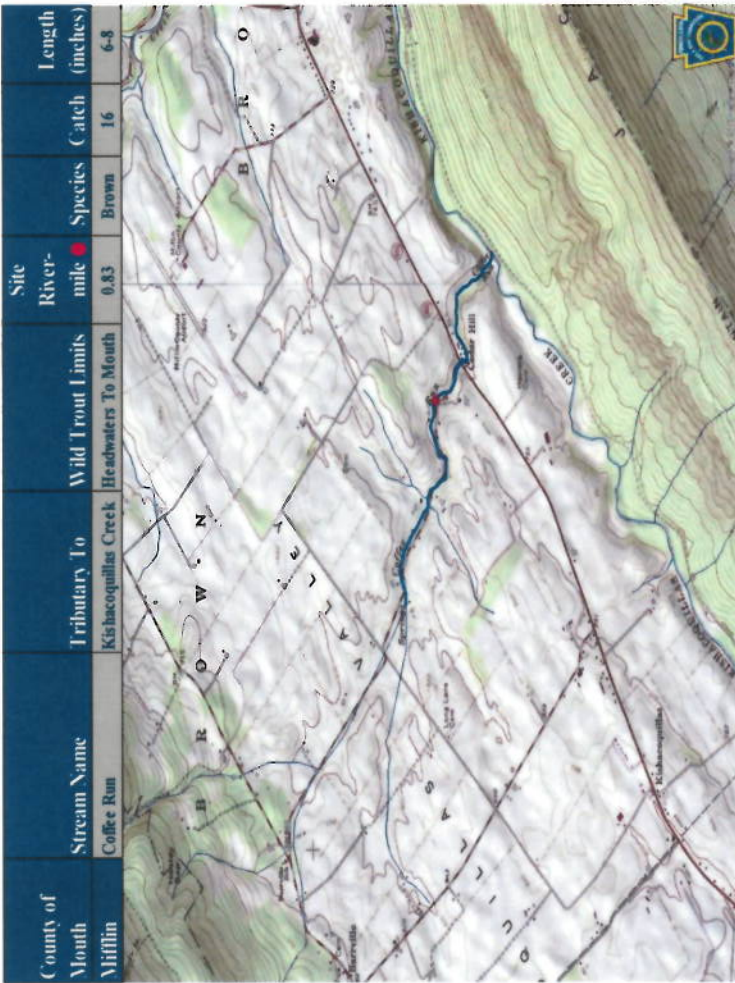
County of Mouth	Stream Name	Tributary To	Wild Trout Limits	Site River-mile	Species	Catch	Length (inches)
Fayette	Big Sandy Creek	Cheat River	Headwaters To 0.5 mi downstream of Culvert on Fayette Springs Road	10.70	Brook	6	2-7

County of Mouth	Stream Name	Tributary To	Wild Trout Limits	Site River-mile	Species	Catch	Length (inches)
Clearfield	Bigger Run	Kratzer Run	Headwaters To Mouth	0.33	Brook Brown	79 2	2-3 4-17

County of Mouth	Stream Name	Tributary To	Wild Trout Limits	Site River-mile	Species	Catch	Length (inches)
Clearfield	Boiling Spring Run	West Branch Susquehanna River	Headwaters To Mouth	0.29	Brook Brown	151 2	2-9 2-16

County of Mouth	Stream Name	Tributary To	Wild Trout Limits	Site River-mile	Species	Catch	Length (inches)
Jefferson	Clutch Run	Little Sandy Creek	Headwaters To Hadden Run	0.79	Brook	8	1-8



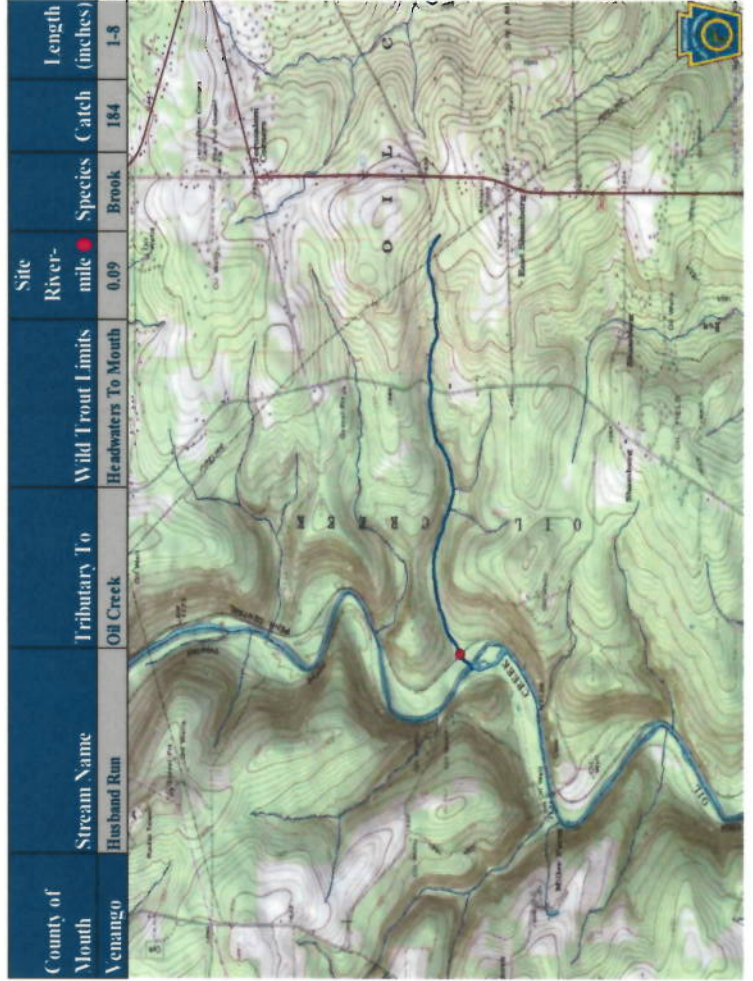
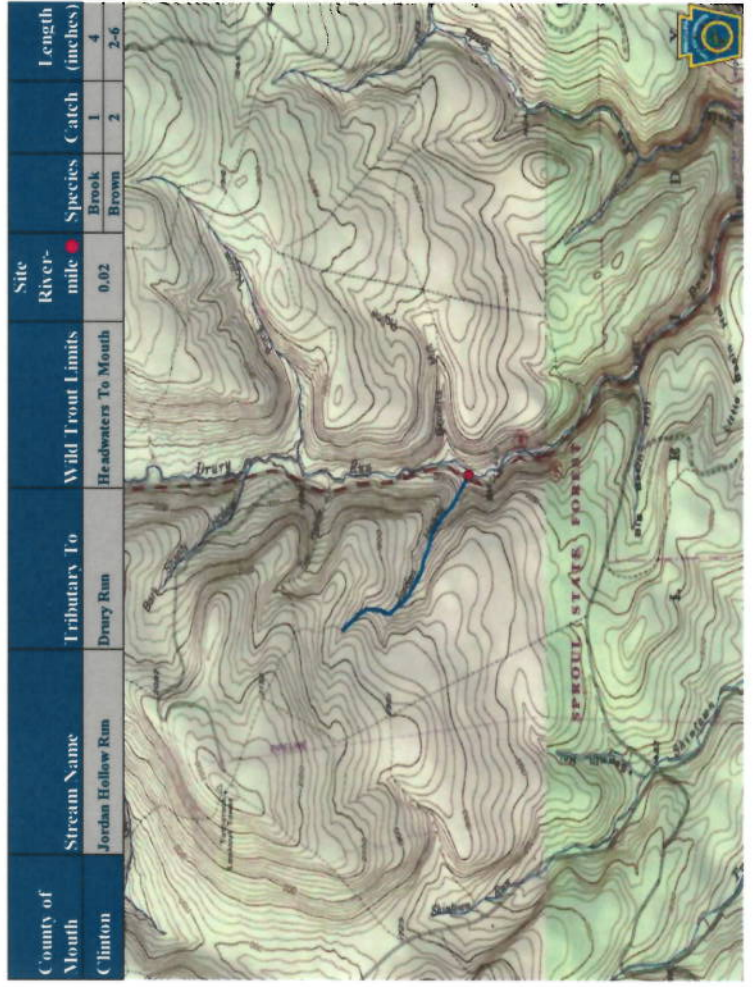
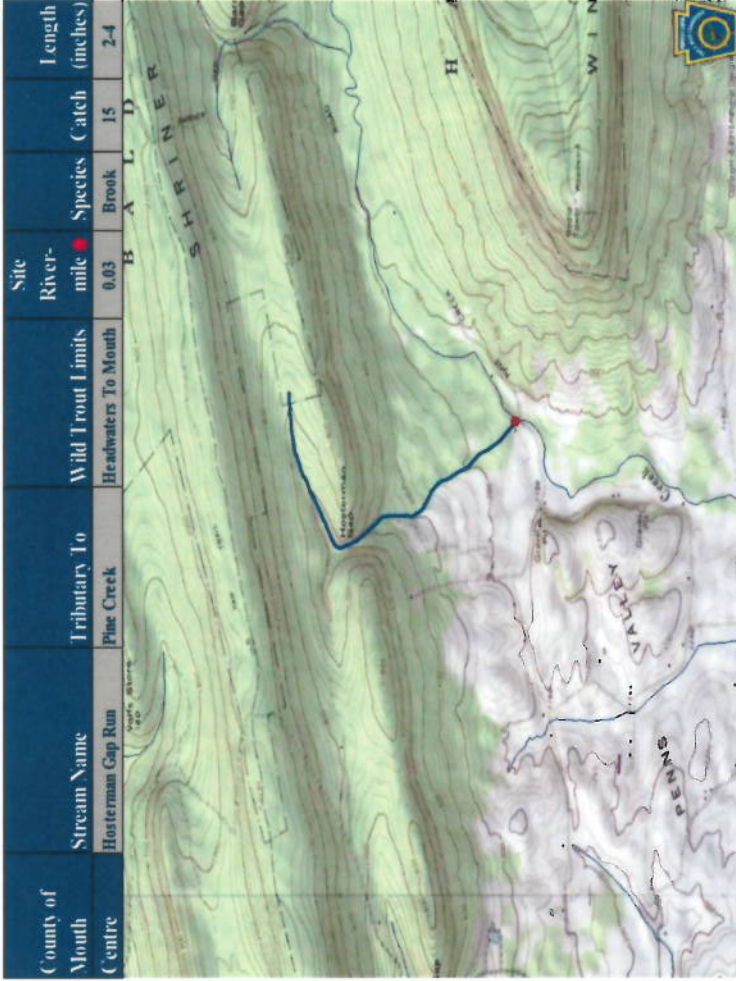
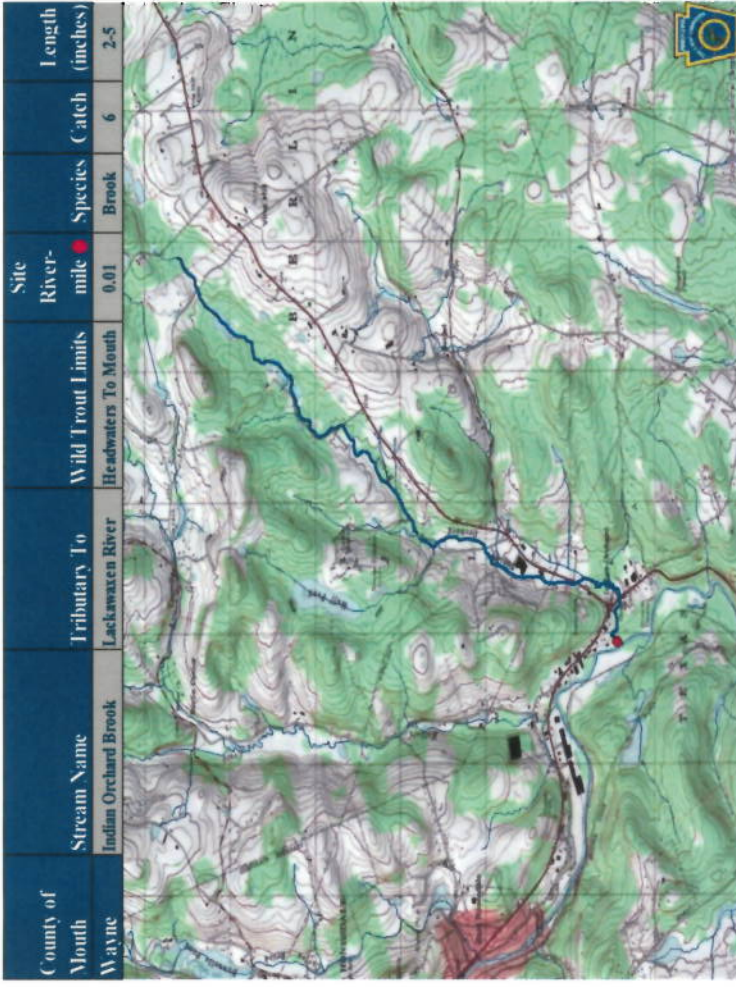


County of Mouth	Stream Name	Tributary To	Wild Trout Limits	Site River-mile	Species	Catch	Length (inches)
Clearfield	Elk Lick Run	West Branch Susquehanna River	Headwaters to UNT at RM 0.37	0.86	Brook	27	2-6

County of Mouth	Stream Name	Tributary To	Wild Trout Limits	Site River-mile	Species	Catch	Length (inches)
Jefferson	Hickok Run	Little Sandy Creek	Headwaters To Mouth	0.01	Brook	9	1-6

County of Mouth	Stream Name	Tributary To	Wild Trout Limits	Site River-mile	Species	Catch	Length (inches)
Clearfield	Hiles Run	West Branch Susquehanna River	Headwaters To Mouth	0.03	Brook	26	2-8

County of Mouth	Stream Name	Tributary To	Wild Trout Limits	Site River-mile	Species	Catch	Length (inches)
Venango	Holeman Run	Allegheny River	Headwaters to Stewart Run Road	0.55	Brook	190	1-8

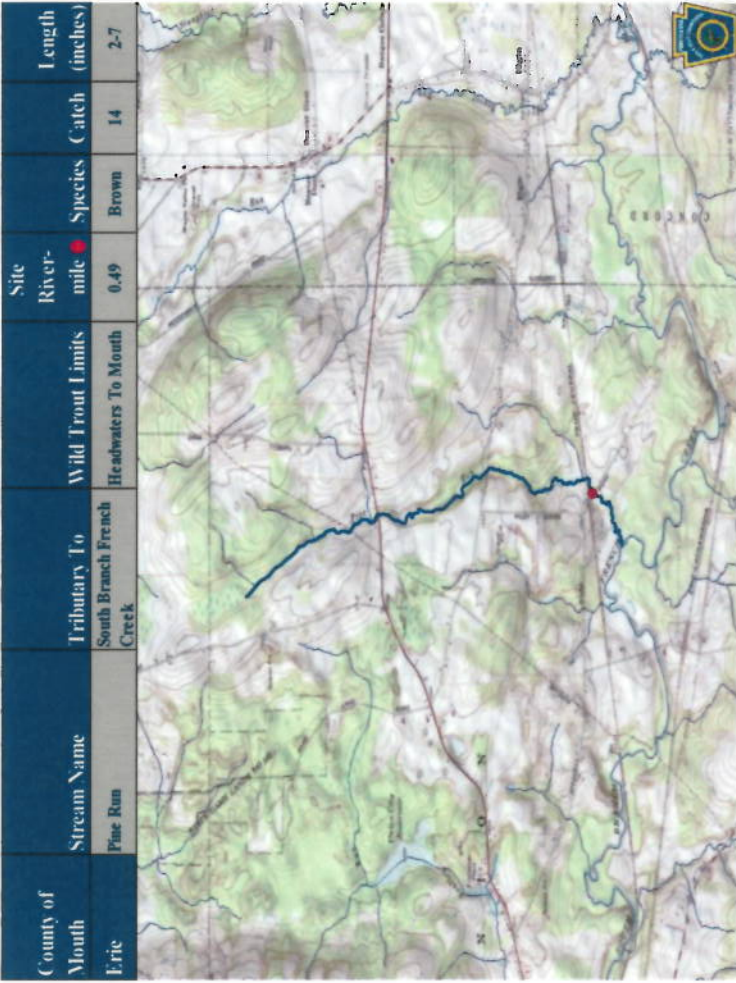
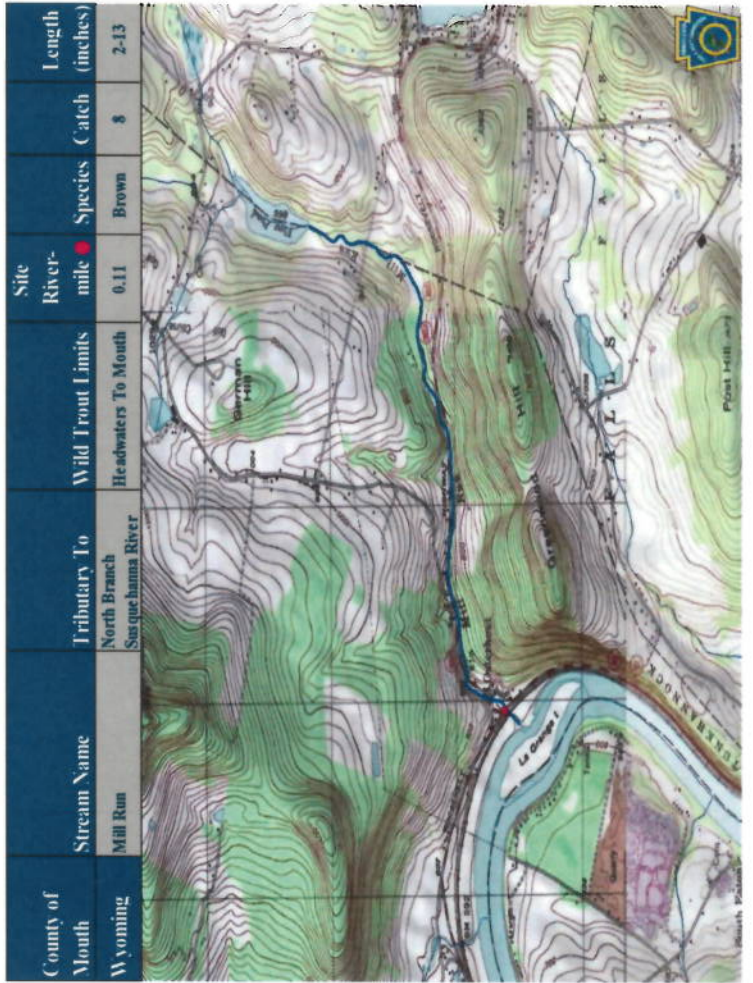


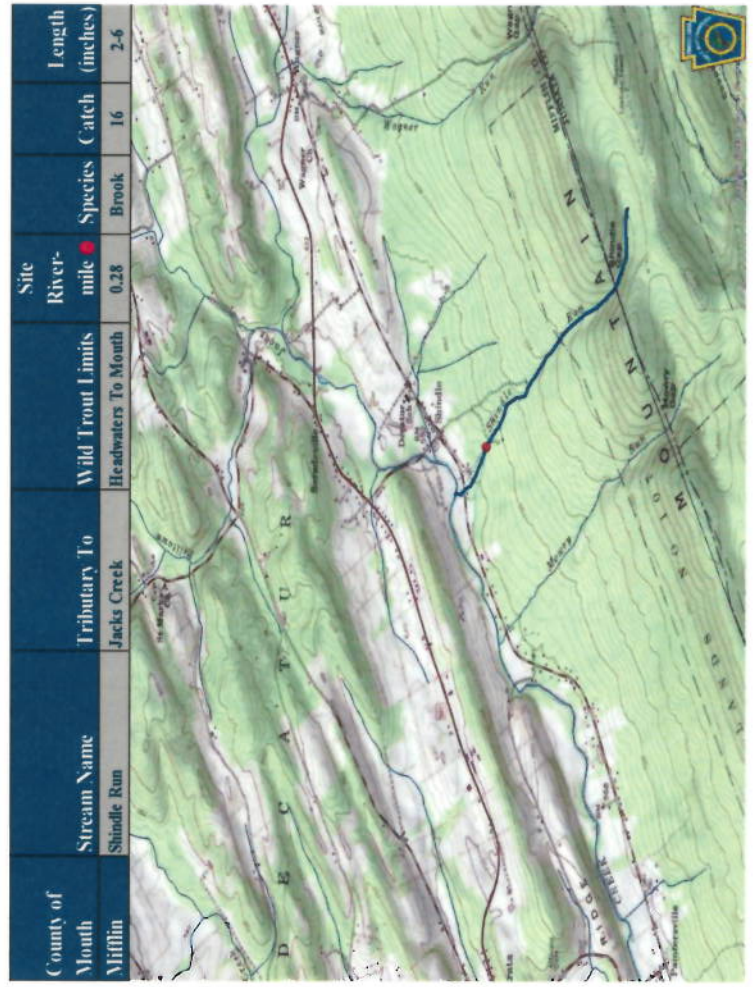
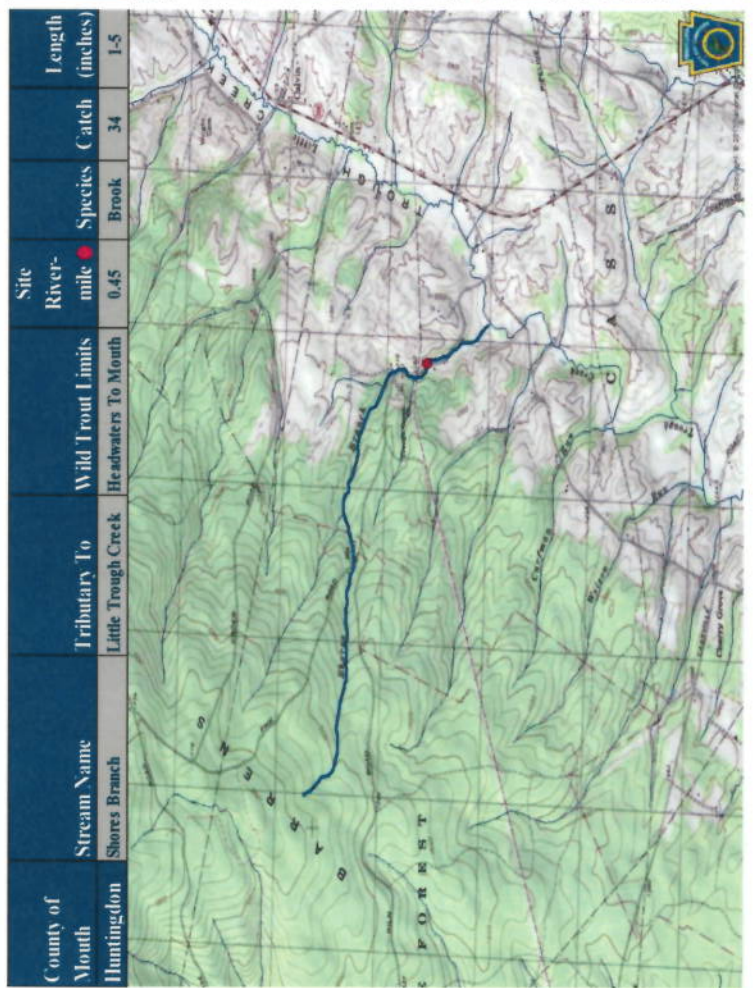
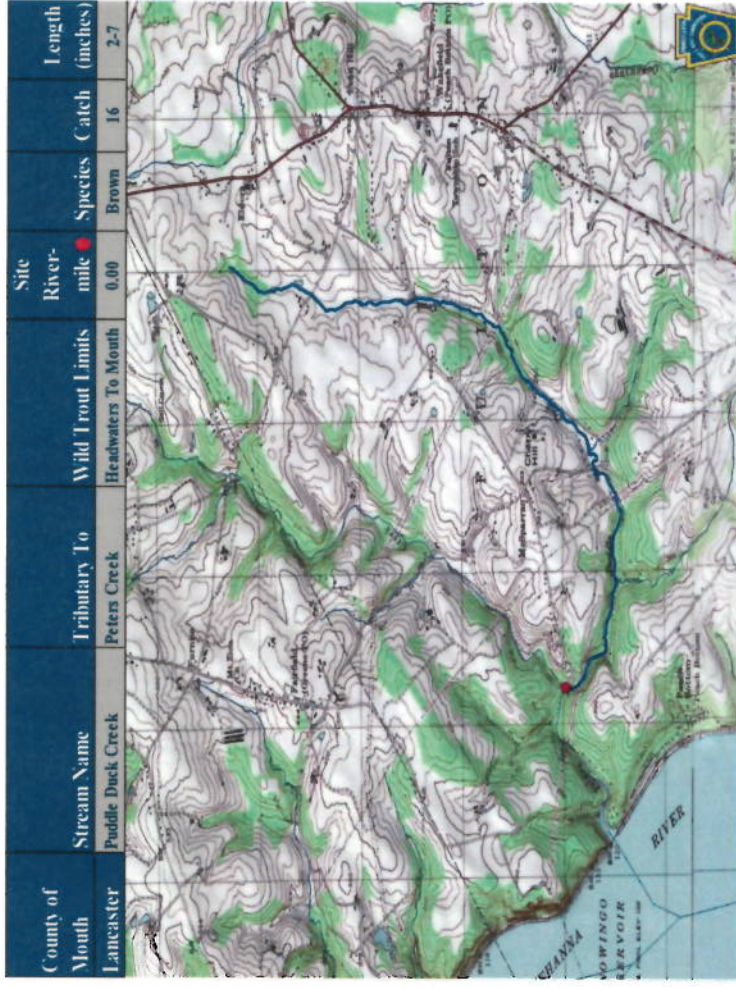
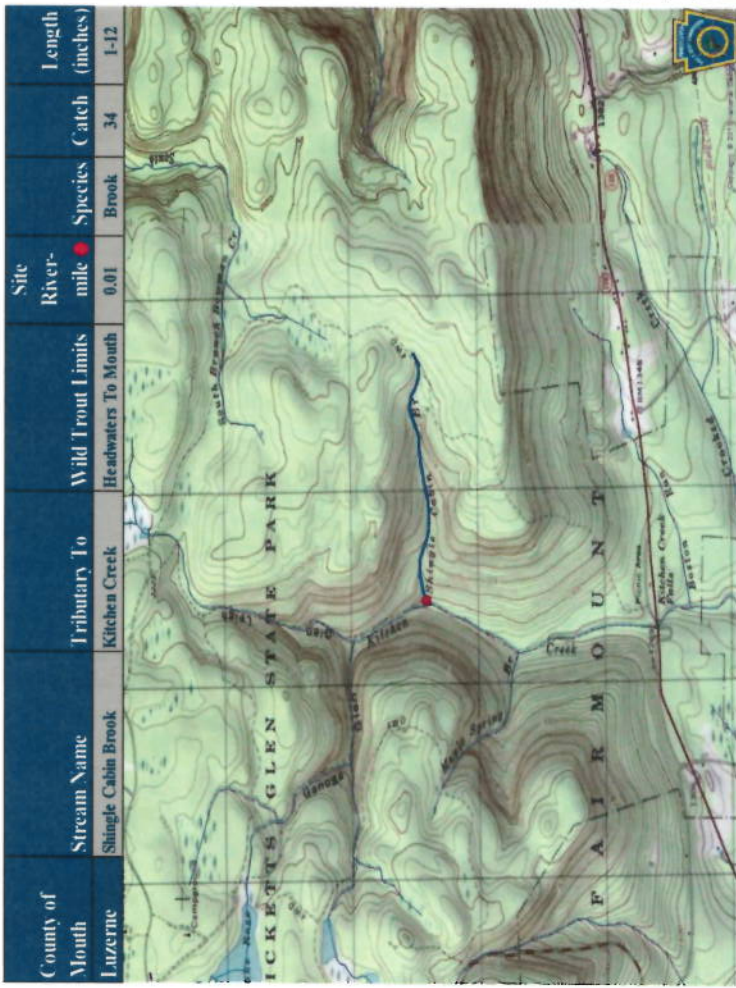
County of Mouth	Stream Name	Tributary To	Wild Trout Limits	Site River-mile	Species	Catch	Length (inches)
Huntingdon	Kennedy Run	Miller Run	Headwaters To Mouth	0.03	Brook	47	1-10

County of Mouth	Stream Name	Tributary To	Wild Trout Limits	Site River-mile	Species	Catch	Length (inches)
Elk	Little Bear Run	Dents Run	Headwaters To Mouth	0.05	Brook	22	2-6

County of Mouth	Stream Name	Tributary To	Wild Trout Limits	Site River-mile	Species	Catch	Length (inches)
Indiana	Little Yellow Creek	Yellow Creek Lake	Headwaters To Mouth	0.00	Brown	3	5-8

County of Mouth	Stream Name	Tributary To	Wild Trout Limits	Site River-mile	Species	Catch	Length (inches)
Luzerne	Maple Spring Brook	Kitchen Creek	Headwaters To Mouth	0.01	Brook	13	1-6





County of Mouth	Stream Name	Tributary To	Wild Trout Limits	Site River-mile	Species	Catch	Length (inches)
Centre	Slide Hollow Run	Sugar Camp Run	Headwaters To Mouth	0.00	Brook	16	3-10

County of Mouth	Stream Name	Tributary To	Wild Trout Limits	Site River-mile	Species	Catch	Length (inches)
Somerset	Soap Hollow Run	Stoneycreek River	Headwaters To Mouth	0.26	Brown	18	2-14

County of Mouth	Stream Name	Tributary To	Wild Trout Limits	Site River-mile	Species	Catch	Length (inches)
Schuylkill	Still Creek	Little Schuylkill River	Headwaters To Still Creek Reservoir	3.67	Brook	10	5-12

County of Mouth	Stream Name	Tributary To	Wild Trout Limits	Site River-mile	Species	Catch	Length (inches)
Centre	Sugar Camp Run	Beech Creek	Headwaters To Mouth	0.00	Brook	15	2-8

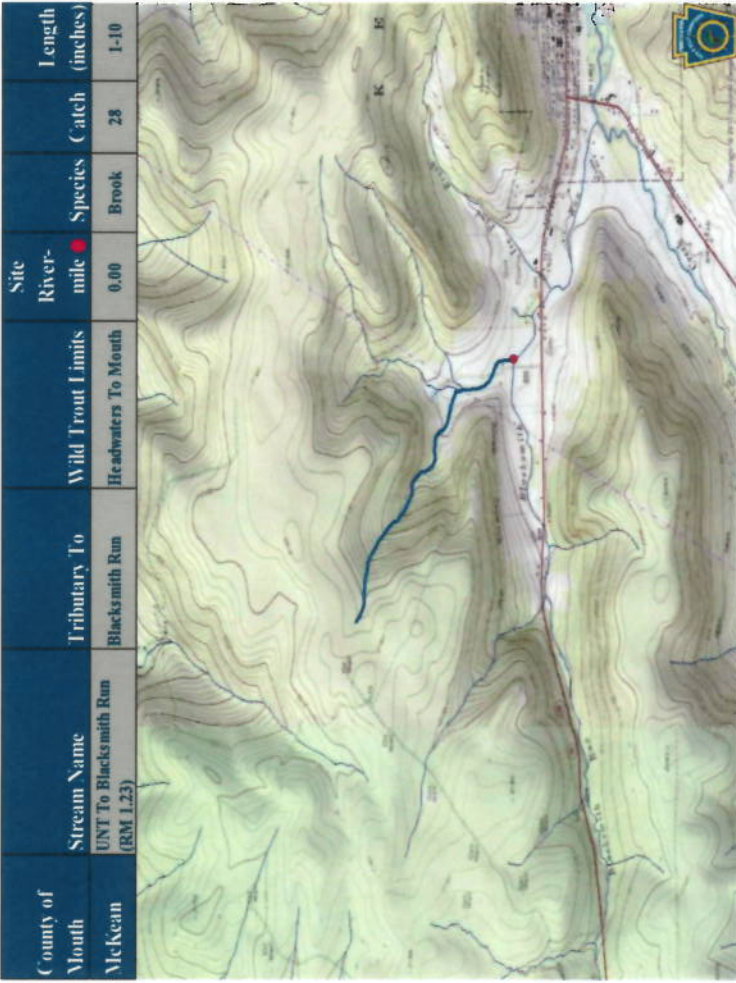
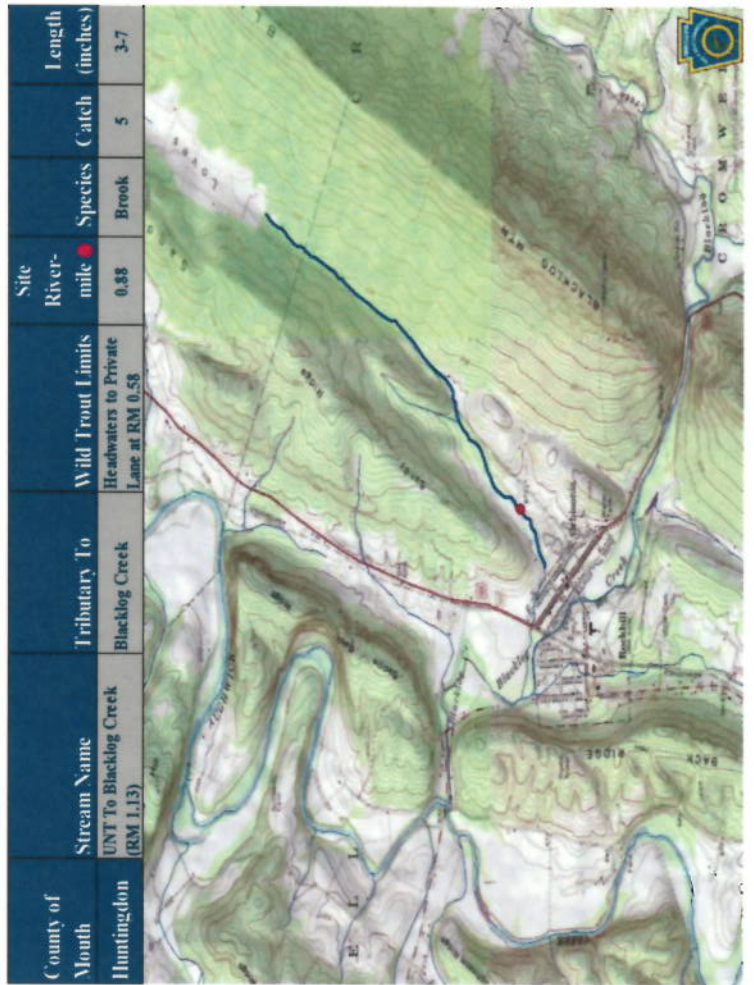
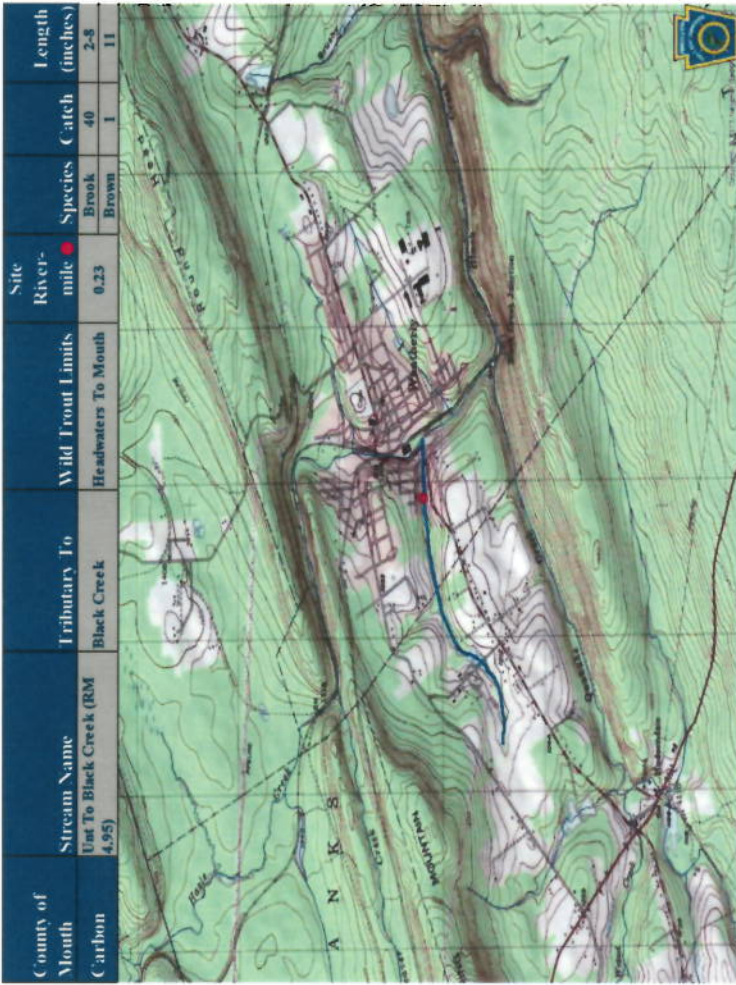
County of Mouth	Stream Name	Tributary To	Wild Trout Limits	Site River-mile	Species	Catch	Length (inches)
Sullivan	Sullivan Branch	East Branch Fishing Creek	Headwaters To Mouth	0.02	Brook	19	1-5

County of Mouth	Stream Name	Tributary To	Wild Trout Limits	Site River-mile	Species	Catch	Length (inches)
Fayette	Tub Run	Youghogheary River Lake	Headwaters To Mouth	0.39	Brook	17	3-7

County of Mouth	Stream Name	Tributary To	Wild Trout Limits	Site River-mile	Species	Catch	Length (inches)
Union	UNT To Bear Run (RM 1.90)	Bear Run	Headwaters To Mouth	0.00	Brook	22	2-5

County of Mouth	Stream Name	Tributary To	Wild Trout Limits	Site River-mile	Species	Catch	Length (inches)
Clearfield	UNT To Beaver Run (RM 2.62)	Beaver Run	Headwaters To Mouth	0.17	Brown	9	3-10



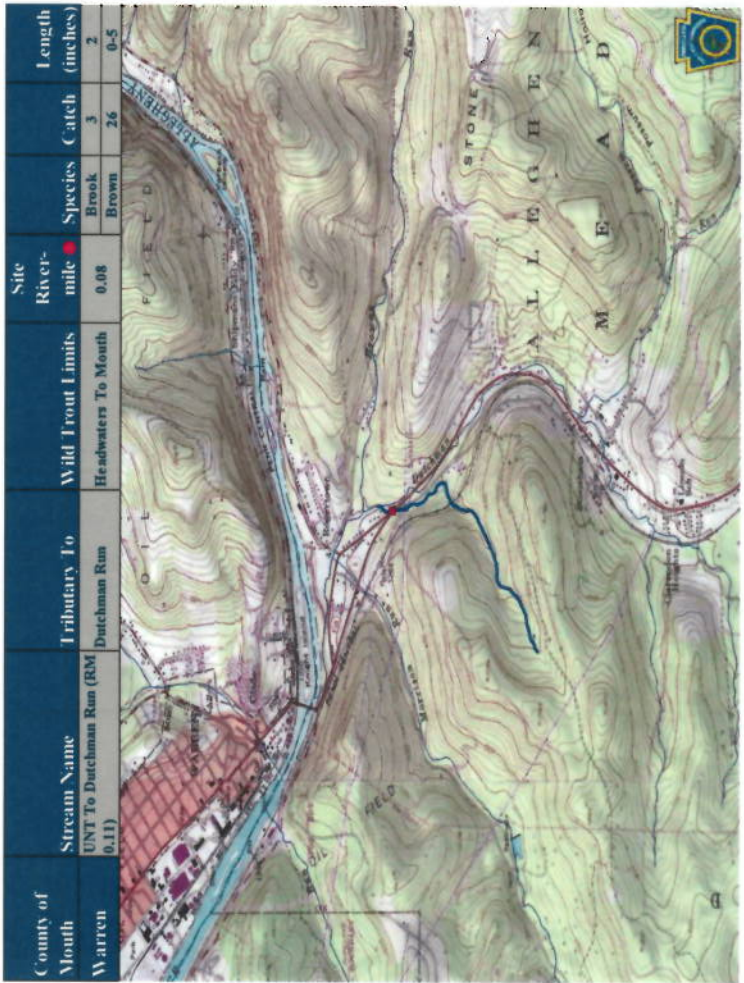
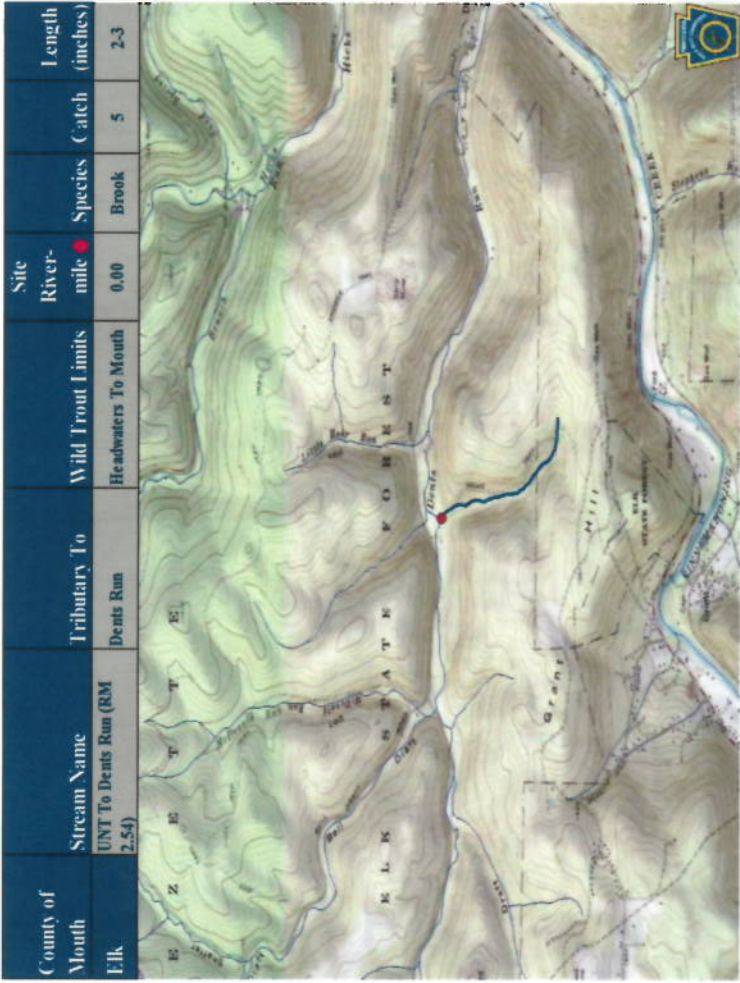
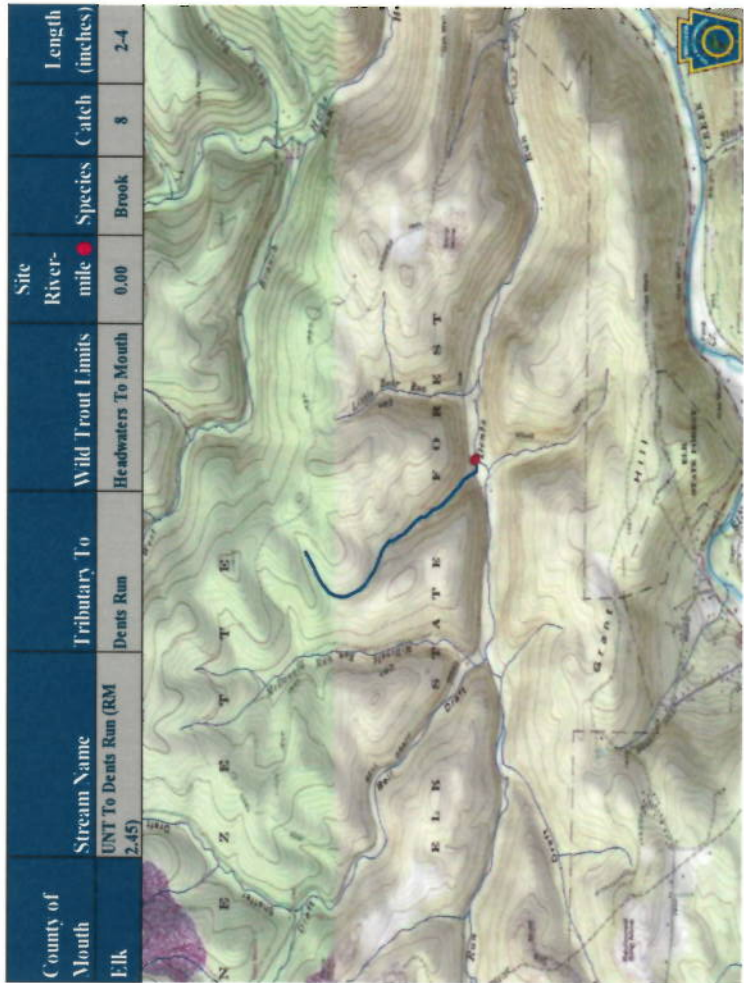
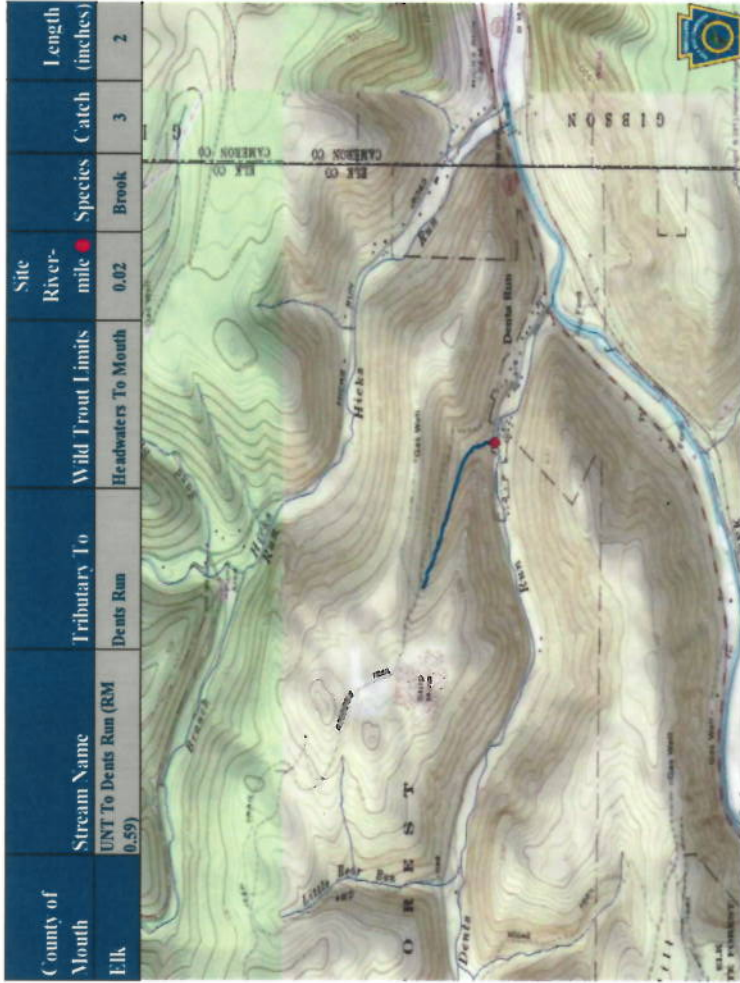


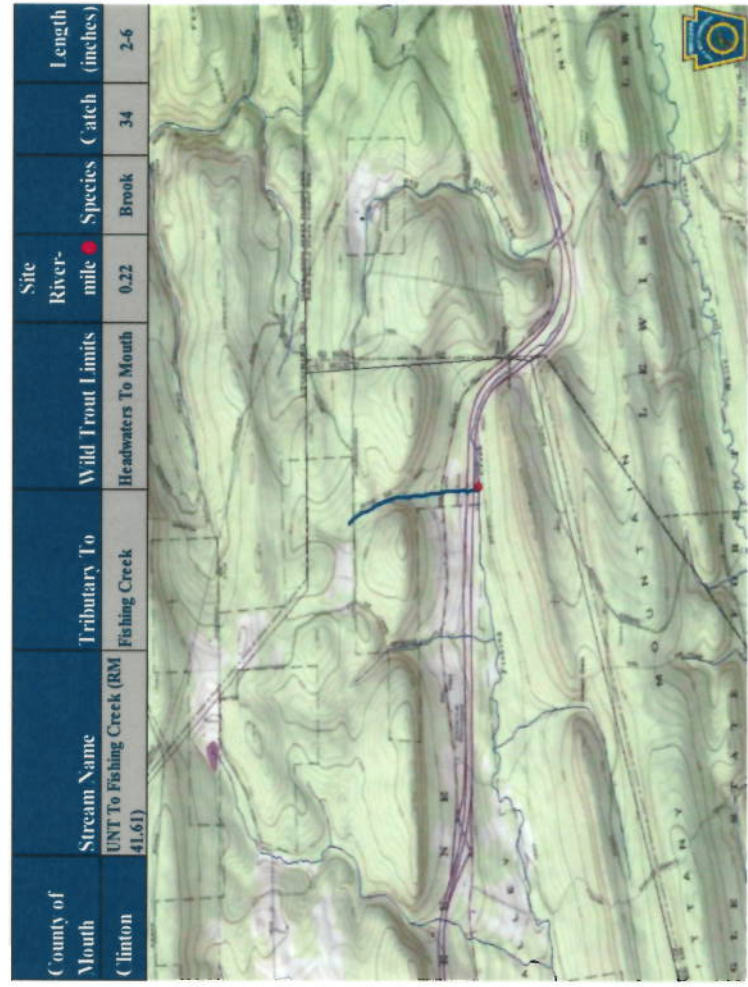
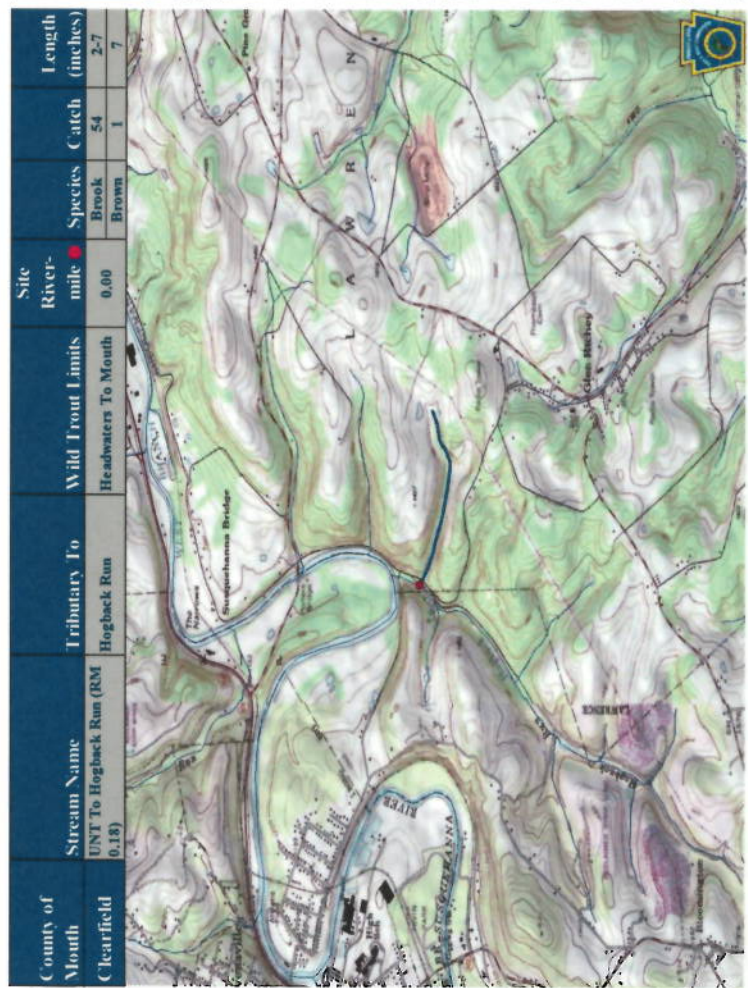
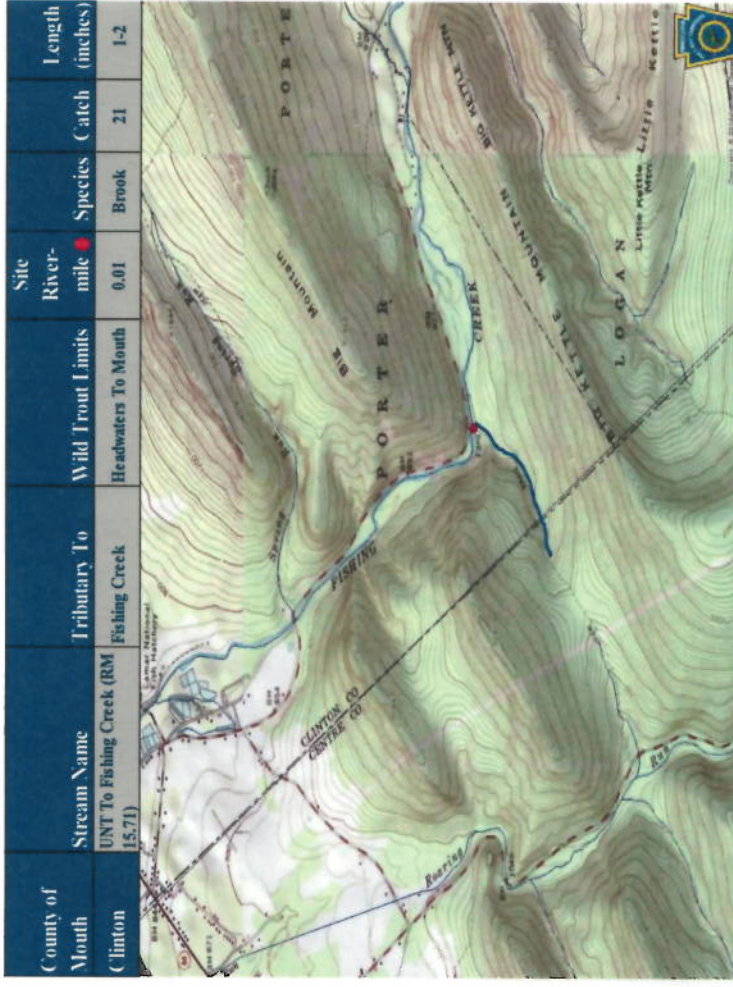
County of Mouth	Stream Name	Tributary To	Wild Trout Limits	Site River-mile	Species	Catch	Length (inches)
Clinton	UNT To Boggs Hollow Run (RM 3.32)	Boggs Hollow	Headwaters To Mouth	0.02	Brook	3	2

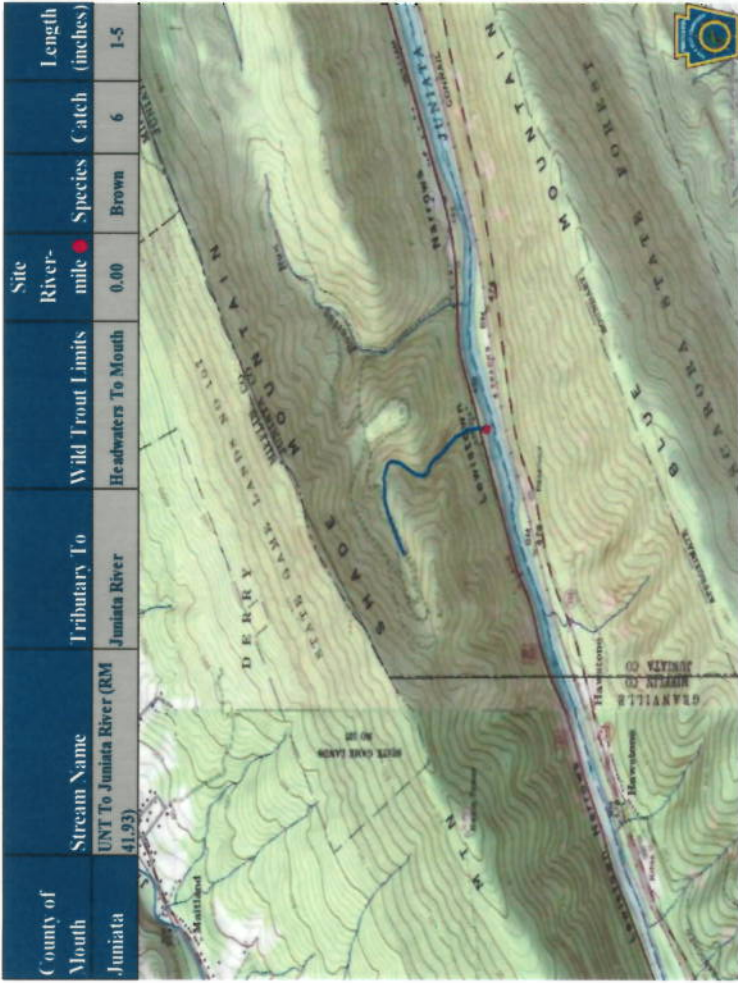
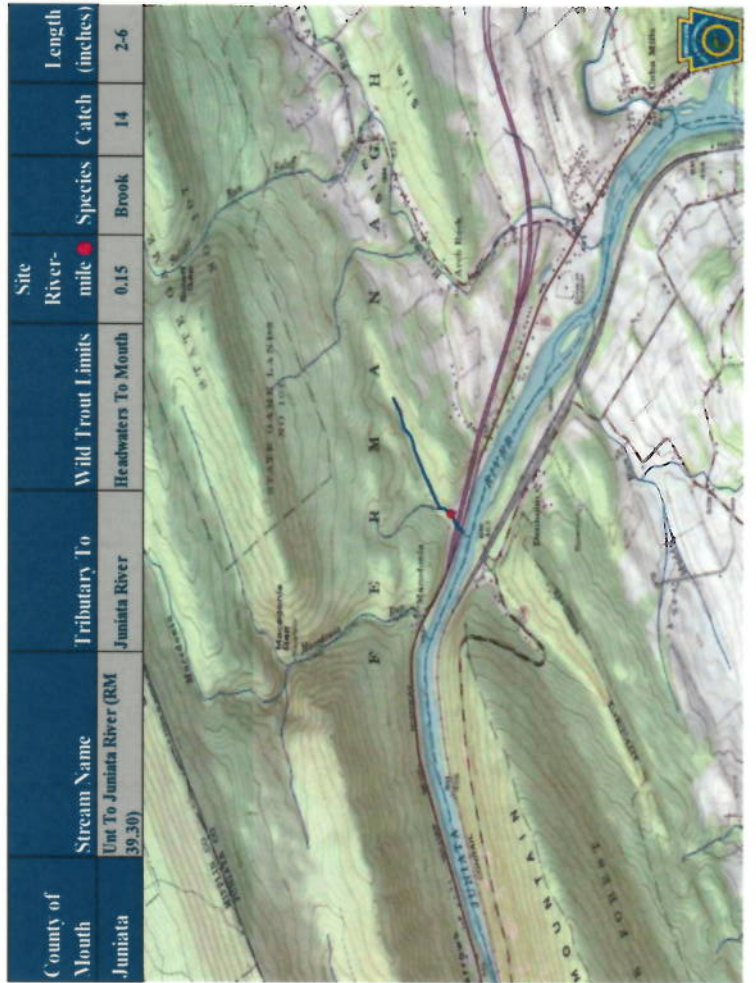
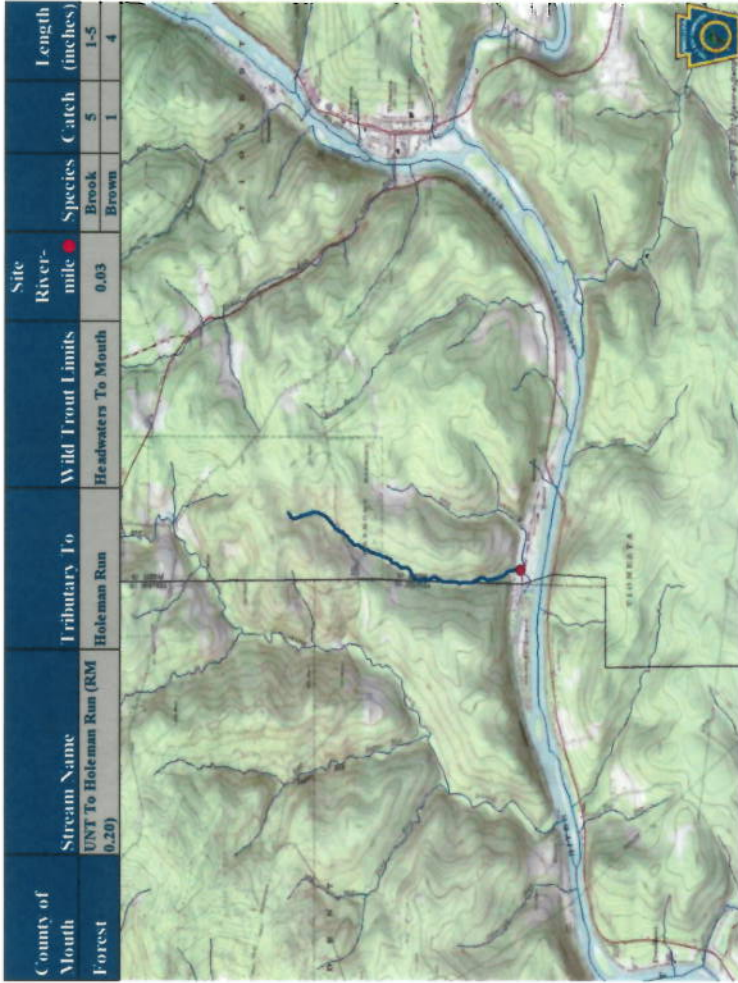
County of Mouth	Stream Name	Tributary To	Wild Trout Limits	Site River-mile	Species	Catch	Length (inches)
Clinton	UNT To Boggs Hollow Run (RM 3.50)	Boggs Hollow	Headwaters To Mouth	0.07	Brook	30	2-7

County of Mouth	Stream Name	Tributary To	Wild Trout Limits	Site River-mile	Species	Catch	Length (inches)
Warren	UNT To Davis Run (RM 0.11)	Davis Run	Headwaters To Mouth	0.00	Brook	14	2-3

County of Mouth	Stream Name	Tributary To	Wild Trout Limits	Site River-mile	Species	Catch	Length (inches)
Warren	UNT To Davis Run (RM 0.33)	Davis Run	Headwaters To Mouth	0.00	Brook	28	2-6







County of Mouth	Stream Name	Tributary To	Wild Trout Limits	Site River-mile	Species	Catch	Length (inches)
Huntingdon	UNT To Laurel Run (RM 1.84)	Laurel Run	Headwaters To Mouth	0.18	Brook	28	1-9

County of Mouth	Stream Name	Tributary To	Wild Trout Limits	Site River-mile	Species	Catch	Length (inches)
Carbon	UNT To Mahoning Creek (RM 7.18)	Mahoning Creek	Headwaters To Mouth	0.00	Brown	75	2-11

County of Mouth	Stream Name	Tributary To	Wild Trout Limits	Site River-mile	Species	Catch	Length (inches)
Carbon	UNT To Mahoning Creek (RM 7.04)	Mahoning Creek	Headwaters To Mouth	0.00	Brook	78	5-8

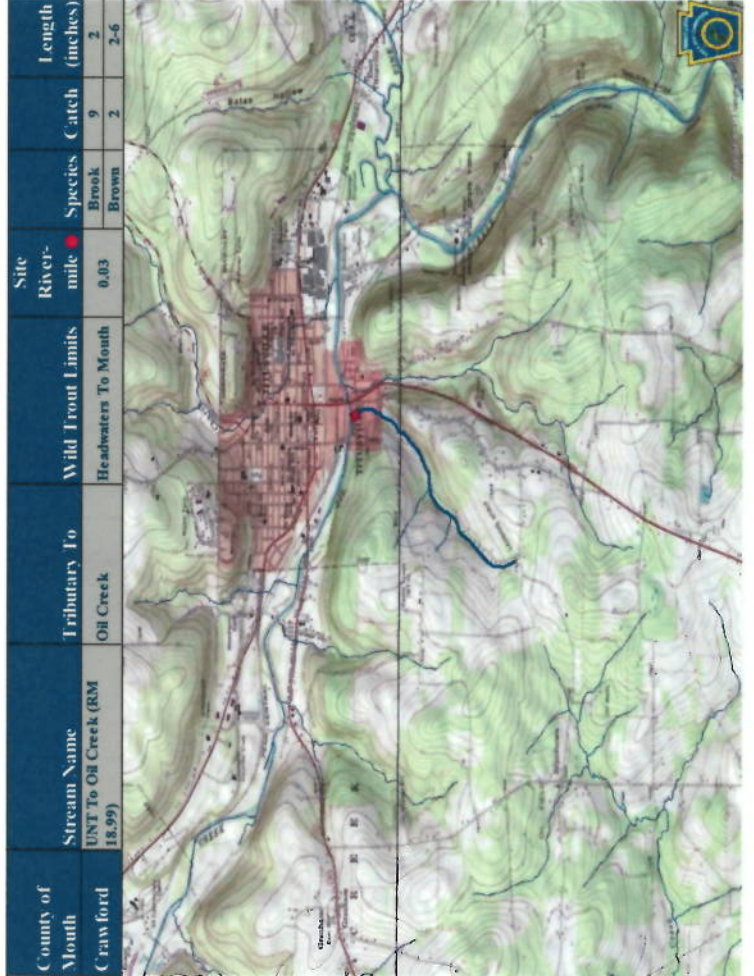
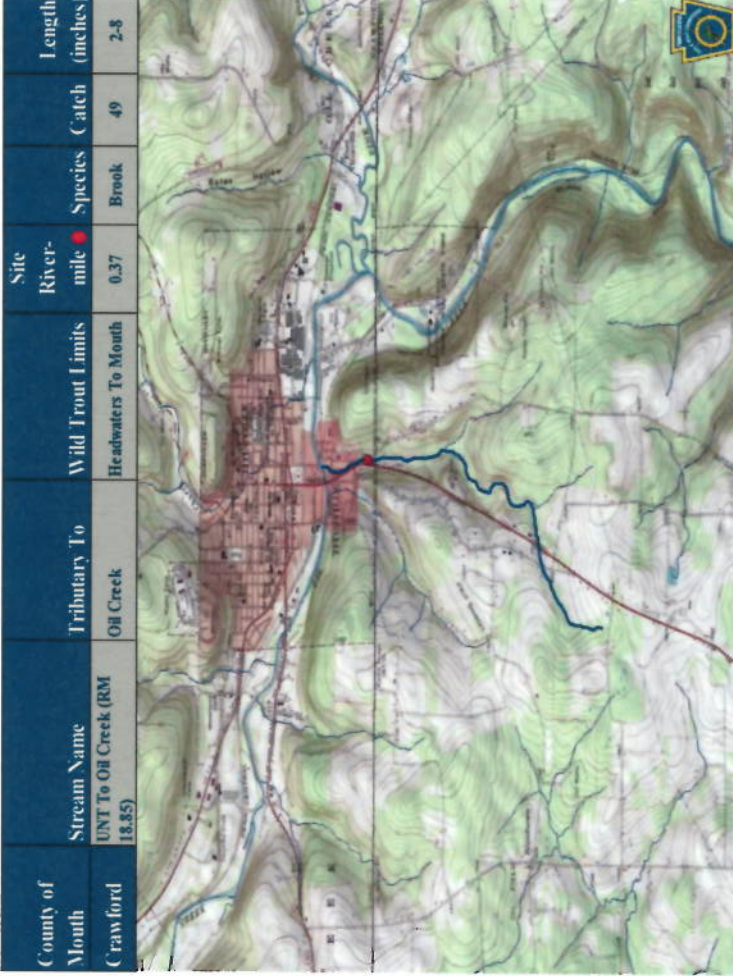
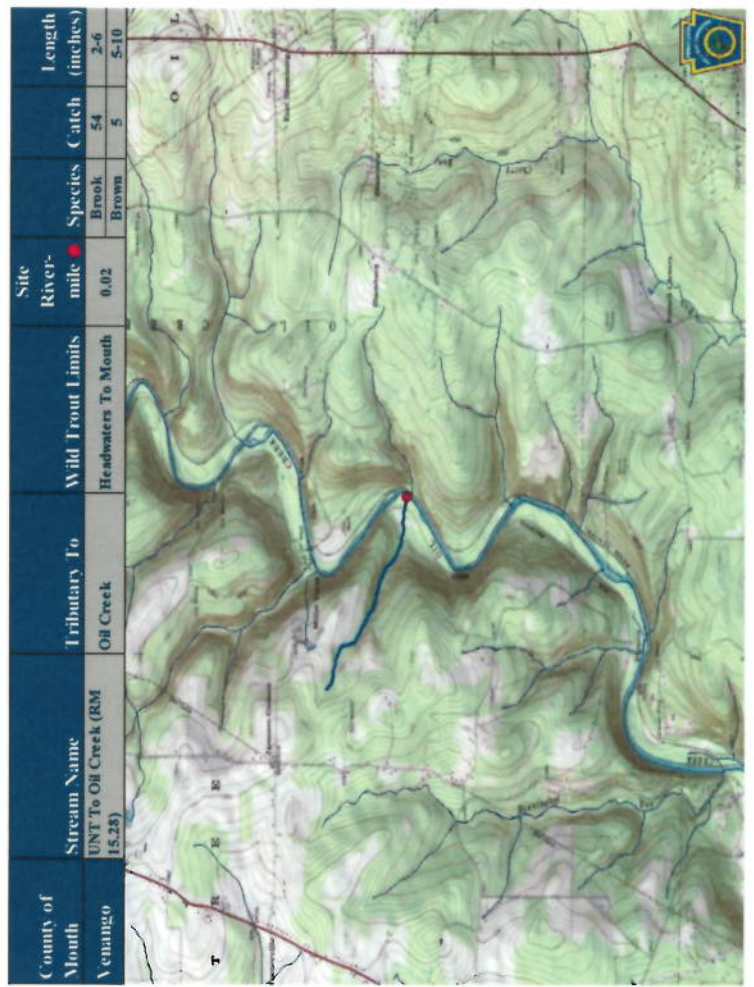
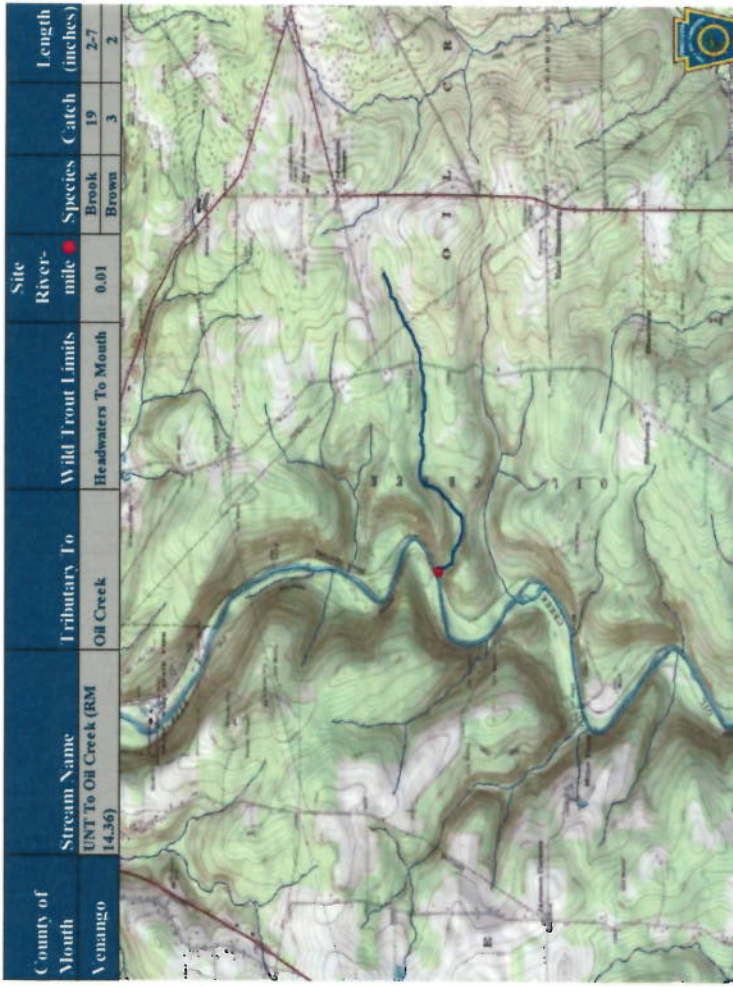
County of Mouth	Stream Name	Tributary To	Wild Trout Limits	Site River-mile	Species	Catch	Length (inches)
Schuylkill	UNT To Mahoning Creek (RM 9.98)	Mahoning Creek	Headwaters To Mouth	0.37	Brown	4	3-9

County of Mouth	Stream Name	Tributary To	Wild Trout Limits	Site River-mile	Species	Catch	Length (inches)
Somerset	UNT To May Run (RM 0.09)	May Run	Headwaters To Mouth	0.14	Brook	7	5-7

County of Mouth	Stream Name	Tributary To	Wild Trout Limits	Site River-mile	Species	Catch	Length (inches)
Venango	UNT To Oil Creek (RM 11.62)	Oil Creek	Headwaters To Mouth	0.02	Brook	15	2-3

County of Mouth	Stream Name	Tributary To	Wild Trout Limits	Site River-mile	Species	Catch	Length (inches)
Venango	UNT To Oil Creek (RM 11.65)	Oil Creek	Headwaters To Mouth	0.07	Brook	7	2-6

County of Mouth	Stream Name	Tributary To	Wild Trout Limits	Site River-mile	Species	Catch	Length (inches)
Venango	UNT To Oil Creek (RM 13.75)	Oil Creek	Headwaters To Mouth	0.02	Brook	6	2-7





County of Mouth	Stream Name	Tributary To	Wild Front Limits	Site River-mile	Species	Catch	Length (inches)
Crawford	UNT To Oil Creek (RM 20.61)	Oil Creek	Headwaters To Mouth	0.13	Brook	10	2-9

County of Mouth	Stream Name	Tributary To	Wild Front Limits	Site River-mile	Species	Catch	Length (inches)
Crawford	UNT To Oil Creek (RM 22.92)	Oil Creek	Headwaters To Mouth	0.41	Brook	12	1-7
					Brown	4	5-8

County of Mouth	Stream Name	Tributary To	Wild Front Limits	Site River-mile	Species	Catch	Length (inches)
Crawford	UNT To Pine Creek (RM 1.09)	Pine Creek	Headwaters To Mouth	0.30	Brook	238	1-9

County of Mouth	Stream Name	Tributary To	Wild Front Limits	Site River-mile	Species	Catch	Length (inches)
Carbon	UNT To Quakie Creek (RM 2.34)	Quakie Creek	Headwaters To Mouth	0.03	Brook	7	2-6
					Brown	15	2-11

County of Mouth	Stream Name	Tributary To	Wild Trout Limits	Site River-mile	Species	Catch	Length (inches)
Carbon	UNT To Quakake Creek (RM 4.33)	Quakake Creek	Headwaters To Mouth	0.05	Brook Brown	3 4	3-5 5-8

County of Mouth	Stream Name	Tributary To	Wild Trout Limits	Site River-mile	Species	Catch	Length (inches)
Somerset	UNT To Quemahoning Reservoir (RM 2.06)	Quemahoning Reservoir	Headwaters To Mouth	0.01	Brown	15	5-9

County of Mouth	Stream Name	Tributary To	Wild Trout Limits	Site River-mile	Species	Catch	Length (inches)
Schuylkill	UNT To Schuylkill River (RM 107.79)	Schuylkill River	Headwaters To Mouth	0.36	Brook	13	3-5

County of Mouth	Stream Name	Tributary To	Wild Trout Limits	Site River-mile	Species	Catch	Length (inches)
Bedford	UNT To Shoehorn Run (RM 6.50)	Shoehorn Run	Headwaters To Mouth	0.30	Brown	38	2-11

County of Mouth	Stream Name	Tributary To	Wild Trout Limits	Site River-mile	Species	Catch	Length (inches)
Warren	UNT to UNT to Dutchman Run (RM 0.76)	UNT to Dutchman Run (RM 1.63)	Headwaters To Mouth	0.01	Brook	23	2-10

County of Mouth	Stream Name	Tributary To	Wild Trout Limits	Site River-mile	Species	Catch	Length (inches)
Centre	UNT To Stony Run (RM 1.15)	Stony Run	Headwaters To Mouth	0.01	Brook	8	1-5

County of Mouth	Stream Name	Tributary To	Wild Trout Limits	Site River-mile	Species	Catch	Length (inches)
Schuylkill	UNT To UNT to Schuylkill River (RM 109.25)	UNT to Schuylkill River (RM 109.25)	Headwaters To 1.0 mi upstream of the Mouth	1.12	Brook	7	6-8

County of Mouth	Stream Name	Tributary To	Wild Trout Limits	Site River-mile	Species	Catch	Length (inches)
Fayette	UNT To Tub Run (RM 1.51)	Tub Run	Headwaters To Mouth	0.16	Brook	13	3-8

County of Mouth	Stream Name	Tributary To	Wild Trout Limits	Site River-mile	Species	Catch	Length (inches)
Clearfield	UNT To West Branch Susquehanna River (RM 176.59)	West Branch Susquehanna River	Headwaters To Mouth	0.00	Brook	12	2-7

County of Mouth	Stream Name	Tributary To	Wild Trout Limits	Site River-mile	Species	Catch	Length (inches)
Clearfield	UNT To West Branch Susquehanna River (RM 191.65)	West Branch Susquehanna River	Headwaters To Mouth	0.00	Brook	1	2-7

County of Mouth	Stream Name	Tributary To	Wild Trout Limits	Site River-mile	Species	Catch	Length (inches)
Clearfield	UNT To West Branch Susquehanna River (RM 199.91)	West Branch Susquehanna River	Headwaters To Mouth	0.04	Brook	17	2-7

County of Mouth	Stream Name	Tributary To	Wild Trout Limits	Site River-mile	Species	Catch	Length (inches)
Clearfield	UNT To West Branch Susquehanna River (RM 200.14)	West Branch Susquehanna River	Headwaters To Mouth	0.06	Brook	19	2

County of Mouth	Stream Name	Tributary To	Wild Trout Limits	Site River-mile	Species	Catch	Length (inches)
Clearfield	UNT To West Branch Susquehanna River (RM 210.69)	West Branch Susquehanna River	Headwaters To Mouth	0.00	Brook	17	2-6

County of Mouth	Stream Name	Tributary To	Wild Trout Limits	Site River-mile	Species	Catch	Length (inches)
Clearfield	UNT To West Branch Susquehanna River (RM 218.63)	West Branch Susquehanna River	Headwaters To Mouth	0.00	Brook	3	2-8
					Brown	2	2

County of Mouth	Stream Name	Tributary To	Wild Trout Limits	Site River-mile	Species	Catch	Length (inches)
Clearfield	UNT To West Branch Susquehanna River (RM 219.23)	West Branch Susquehanna River	Headwaters To Mouth	0.00	Brook	25	2-5
					Brown	5	2-3

County of Mouth	Stream Name	Tributary To	Wild Trout Limits	Site River-mile	Species	Catch	Length (inches)
Clearfield	UNT To West Branch Susquehanna River (RM 223.19)	West Branch Susquehanna River	Headwaters To Mouth	0.17	Brook	8	4-6

County of Mouth	Stream Name	Tributary To	Wild Trout Limits	Site River-mile	Length (inches)
Jefferson	UNT To Wolf Run (RM 2.33)	Wolf Run	Headwaters To Mouth	0.00	2-6
				Brook	11

County of Mouth	Stream Name	Tributary To	Wild Trout Limits	Site River-mile	Length (inches)
Cambria	UNT To West Branch Susquehanna River (RM 234.73)	West Branch Susquehanna River	Headwaters To Mouth	0.00	5-8

County of Mouth	Stream Name	Tributary To	Wild Trout Limits	Site River-mile	Length (inches)
Clinton	UNT To Water Trough Hollow Run (RM 0.35)	Water Trough Hollow Run	Headwaters To Mouth	0.01	2-4
				Brook	11

County of Mouth	Stream Name	Tributary To	Wild Trout Limits	Site River-mile	Length (inches)
Cambria	UNT To West Branch Susquehanna River (RM 238.00)	West Branch Susquehanna River	Headwaters to UNT at RM 0.54	0.69	2
				Brook	8
				Brown	2-9

County of Mouth Centre	Stream Name	Tributary To	Wild Froat Limits	Site River-mile	Species	Catch	Length (inches)
	Whetstone Gap Run	Pine Creek	Headwaters To Mouth	0.08	Brook	77	2-7
					Brown	7	3-8

County of Mouth Centre	Stream Name	Tributary To	Wild Froat Limits	Site River-mile	Species	Catch	Length (inches)
	Winkelblech Gap Run	Pine Creek	Headwaters To Mouth	0.00	Brook	21	3-12

12. *Governing Law:* In purchasing a ticket, the customer agrees to comply with and abide by the State Lottery Law (72 P.S. §§ 3761-101—3761-314), 61 Pa. Code Part V (relating to State Lotteries) and the provisions contained in this notice.

13. *Termination of the Game:* The Secretary may announce a termination date, after which no further tickets from this game may be sold. The announcement will be disseminated through media used to advertise or promote Pennsylvania Spicy 9s '16 or through normal communications methods.

EILEEN H. McNULTY,  
Secretary

[Pa.B. Doc. No. 16-128. Filed for public inspection January 22, 2016, 9:00 a.m.]

## DEPARTMENT OF TRANSPORTATION

### Contemplated Sale of Land No Longer Needed for Transportation Purposes; Correction

An error occurred in the notice published at 46 Pa.B. 420 (January 16, 2016). A sentence was inadvertently omitted from the description of the property. The description of the property is corrected as follows. The remainder of the notice is accurate as published.

Tincum Township, Delaware County, parcel No. 5. The parcel contains 4,241.05 square feet of unimproved land situated at Governor Printz Boulevard and First Street. The parcel is subject to a drainage easement owned by the Department. The estimated fair market value is \$21,500.

LESLIE S. RICHARDS,  
Secretary

[Pa.B. Doc. No. 16-129. Filed for public inspection January 22, 2016, 9:00 a.m.]

## FISH AND BOAT COMMISSION

### Classification of Wild Trout Streams; Proposed Additions and Revisions; March 2016

Under 58 Pa. Code § 57.11 (relating to listing of wild trout streams), it is the policy of the Fish and Boat Commission (Commission) to accurately identify and classify stream sections supporting naturally reproducing populations of trout as wild trout streams. The Commission's Fisheries Management Division maintains the list of wild trout streams. The Executive Director, with the approval of the Commission, will from time to time publish the list of wild trout streams in the *Pennsylvania Bulletin*. The listing of a stream section as a wild trout stream is a biological designation that does not determine how it is managed. The Commission relies upon many factors in determining the appropriate management of streams.

At the next Commission meeting on March 30 and 31, 2016, the Commission will consider changes to its list of wild trout streams. Specifically, the Commission will consider the addition of the following streams or portions of streams to the list:

Transportation Committee Meeting

The Transportation Committee will hold a meeting on Monday, February 1, 2016, from 10 a.m. to 12 p.m. in Conference Room 8N1, Commonwealth Keystone Building, Harrisburg, PA. For more information contact Ellen E. Sweeney, (717) 787-2913, [ellsweeney@pa.gov](mailto:ellsweeney@pa.gov).

LESLIE S. RICHARDS,  
Secretary

[Pa.B. Doc. No. 16-130. Filed for public inspection January 22, 2016, 9:00 a.m.]

## ENVIRONMENTAL HEARING BOARD

Glenn J. Morrison, MD v. DEP and Insurance Auto Auctions, Inc., Permittee; EHB Doc. No. 2016-009-L

Glenn J. Morrison, MD has appealed the issuance by the Department of Environmental Protection of a General NPDES permit to Insurance Auto Auctions, Inc. for a facility in Latimore Township, Adams County.

A date for the hearing on the appeal has not yet been scheduled.

The appeal is filed with the Environmental Hearing Board (Board) at its office on the Second Floor, Rachel Carson State Office Building, 400 Market Street, P. O. Box 8457, Harrisburg, PA 17105-8457, and may be reviewed by any interested party on request during normal business hours. If information concerning this notice is required in an alternative form, contact the Secretary to the Board at (717) 787-3483. TDD users may telephone the Board through the Pennsylvania AT&T Relay Center at (800) 654-5984.

Petitions to intervene in the appeal may be filed with the Board by interested parties under 25 Pa. Code § 1021.81 (relating to intervention). Copies of the Board's rules of practice and procedure are available upon request from the Board.

THOMAS W. RENWAND,  
Chairperson

[Pa.B. Doc. No. 16-131. Filed for public inspection January 22, 2016, 9:00 a.m.]



<i>County of Mouth</i>	<i>Stream Name</i>	<i>Section Limits</i>	<i>Tributary to</i>	<i>Mouth Lat / Lon</i>
Bedford	UNT to Shobers Run (RM 6.50)	Headwaters to Mouth	Shobers Run	39.956243 78.547466
Cambria	UNT to West Branch Susquehanna River (RM 234.73)	Headwaters to Mouth	West Branch Susquehanna River	40.626410 78.763370
Cambria	UNT to West Branch Susquehanna River (RM 238.00)	Headwaters to UNT at RM 0.54	West Branch Susquehanna River	40.592671 78.735987
Carbon	Beaver Creek	Headwaters to Mouth	Black Creek	40.945833 75.847778
Carbon	Crooked Run	Headwaters to Mouth	Stewart Creek	40.825588 75.766666
Carbon	UNT to Black Creek (RM 4.95)	Headwaters to Mouth	Black Creek	40.937846 75.828292
Carbon	UNT to Mahoning Creek (RM 7.04)	Headwaters to Mouth	Mahoning Creek	40.790276 75.799454
Carbon	UNT to Mahoning Creek (RM 7.18)	Headwaters to Mouth	Mahoning Creek	40.790310 75.800095
Carbon	UNT to Quakake Creek (RM 2.34)	Headwaters to Mouth	Quakake Creek	40.916287 75.855366
Carbon	UNT to Quakake Creek (RM 4.33)	Headwaters to Mouth	Quakake Creek	40.899881 75.886926
Centre	Hosterman Gap Run	Headwaters to Mouth	Pine Creek	40.922043 77.345771
Centre	Slide Hollow Run	Headwaters to Mouth	Sugar Camp Run	41.108060 77.680743
Centre	Sugar Camp Run	Headwaters to Mouth	Beech Creek	41.108203 77.679101
Centre	UNT to Stony Run (RM 1.15)	Headwaters to Mouth	Stony Run	40.927930 77.293600
Centre	Whetstone Gap Run	Headwaters to Mouth	Pine Creek	40.940342 77.302752
Centre	Winkelblech Gap Run	Headwaters to Mouth	Pine Creek	40.935263 77.319164
Clearfield	Bilger Run	Headwaters to Mouth	Kratzer Run	40.972069 78.570442
Clearfield	Boiling Spring Run	Headwaters to Mouth	West Branch Susquehanna River	40.774776 78.784643
Clearfield	Elk Lick Run	Headwaters to UNT at RM 0.37	West Branch Susquehanna River	40.839370 78.778193
Clearfield	Hiles Run	Headwaters to Mouth	West Branch Susquehanna River	40.925775 78.587747
Clearfield	UNT to Beaver Run (RM 2.62)	Headwaters to Mouth	Beaver Run	40.756522 78.769496
Clearfield	UNT to Gifford Run (RM 4.66)	Headwaters to Mouth	Gifford Run	41.182584 78.287269
Clearfield	UNT to Hogback Run (RM 0.18)	Headwaters to Mouth	Hogback Run	40.963415 78.491269
Clearfield	UNT to West Branch Susquehanna River (RM 176.59)	Headwaters to Mouth	West Branch Susquehanna River	40.967653 78.489170
Clearfield	UNT to West Branch Susquehanna River (RM 191.65)	Headwaters to Mouth	West Branch Susquehanna River	40.929639 78.603418
Clearfield	UNT to West Branch Susquehanna River (RM 199.91)	Headwaters to Mouth	West Branch Susquehanna River	40.892514 78.683768

<i>County of Mouth</i>	<i>Stream Name</i>	<i>Section Limits</i>	<i>Tributary to</i>	<i>Mouth Lat/Lon</i>
Clearfield	UNT to West Branch Susquehanna River (RM 200.14)	Headwaters to Mouth	West Branch Susquehanna River	40.893715 78.687787
Clearfield	UNT to West Branch Susquehanna River (RM 210.69)	Headwaters to Mouth	West Branch Susquehanna River	40.851198 78.779081
Clearfield	UNT to West Branch Susquehanna River (RM 218.63)	Headwaters to Mouth	West Branch Susquehanna River	40.790060 78.776690
Clearfield	UNT to West Branch Susquehanna River (RM 219.23)	Headwaters to Mouth	West Branch Susquehanna River	40.787494 78.784602
Clearfield	UNT to West Branch Susquehanna River (RM 223.19)	Headwaters to Mouth	West Branch Susquehanna River	40.744820 78.793676
Clinton	Bark Shanty Hollow Run	Headwaters to Mouth	Drury Run	41.395987 77.834448
Clinton	Big Run	Headwaters to Mouth	Beech Creek	41.110832 77.731944
Clinton	Jordan Hollow Run	Headwaters to Mouth	Drury Run	41.380501 77.834872
Clinton	Pong Hollow Run	Headwaters to Mouth	Drury Run	41.392820 77.834283
Clinton	UNT to Boggs Hollow Run (RM 2.61)	Headwaters to Mouth	Boggs Hollow	41.308449 77.713585
Clinton	UNT to Boggs Hollow Run (RM 3.32)	Headwaters to Mouth	Boggs Hollow	41.302162 77.723526
Clinton	UNT to Boggs Hollow Run (RM 3.50)	Headwaters to Mouth	Boggs Hollow	41.301323 77.726898
Clinton	UNT to Fishing Creek (RM 15.71)	Headwaters to Mouth	Fishing Creek	40.983536 77.516361
Clinton	UNT to Fishing Creek (RM 41.61)	Headwaters to Mouth	Fishing Creek	41.050100 77.155718
Clinton	UNT to Water Trough Hollow Run (RM 0.35)	Headwaters to Mouth	Water Trough Hollow Run	41.274300 77.754044
Crawford	UNT to Oil Creek (RM 18.85)	Headwaters to Mouth	Oil Creek	41.623098 79.671721
Crawford	UNT to Oil Creek (RM 18.99)	Headwaters to Mouth	Oil Creek	41.622352 79.674272
Crawford	UNT To Oil Creek (RM 20.61)	Headwaters to Mouth	Oil Creek	41.629721 79.700702
Crawford	UNT to Oil Creek (RM 22.92)	Headwaters to Mouth	Oil Creek	41.648250 79.732503
Crawford	UNT to Pine Creek (RM 1.09)	Headwaters to Mouth	Pine Creek	41.618325 79.639600
Elk	Little Bear Run	Headwaters to Mouth	Dents Run	41.362039 78.297280
Elk	UNT to Dents Run (RM 0.59)	Headwaters to Mouth	Dents Run	41.359482 78.271233
Elk	UNT to Dents Run (RM 2.45)	Headwaters to Mouth	Dents Run	41.362202 78.303166
Elk	UNT to Dents Run (RM 2.54)	Headwaters to Mouth	Dents Run	41.361078 78.304024
Erie	Pine Run	Headwaters to Mouth	South Branch French Creek	41.892750 79.785446

<i>County of Mouth</i>	<i>Stream Name</i>	<i>Section Limits</i>	<i>Tributary to</i>	<i>Mouth Lat/Lon</i>
Fayette	Beaver Creek	Headwaters to Dinner Bell Ohioplye Road Bridge	Meadow Run	39.832939 79.509872
Fayette	Big Sandy Creek	Headwaters to 0.5 mile downstream of Fayette Springs Road	Cheat River	39.720833 79.661110
Fayette	Tub Run	Headwaters to Mouth	Youghiogheny River Lake	39.771484 79.400940
Fayette	UNT to Tub Run (RM 1.51)	Headwaters to Mouth	Tub Run	39.783039 79.423410
Forest	UNT to Holeman Run (RM 0.20)	Headwaters to Mouth	Holeman Run	41.477138 79.510070
Huntingdon	Kennedy Run	Headwaters to Mouth	Miller Run	40.234619 78.164886
Huntingdon	Shores Branch	Headwaters to Mouth	Little Trough Creek	40.317951 78.044647
Huntingdon	UNT to Blacklog Creek (RM 1.13)	Headwaters to Private Lane at RM 0.58	Blacklog Creek	40.247238 77.902122
Huntingdon	UNT to Laurel Run (RM 1.84)	Headwaters to Mouth	Laurel Run	40.336861 78.103546
Indiana	Little Yellow Creek	Headwaters to Mouth	Yellow Creek Lake	40.568611 79.018608
Jefferson	Clutch Run	Headwaters to Hadden Run	Little Sandy Creek	41.028250 79.044743
Jefferson	Hickok Run	Headwaters to Mouth	Little Sandy Creek	41.034360 79.031704
Jefferson	Middle Branch Little Sandy Creek	Headwaters to Mouth	Little Sandy Creek	41.038799 79.025277
Jefferson	UNT to Wolf Run (RM 2.33)	Headwaters to Mouth	Wolf Run	41.164140 78.791325
Juniata	Copperhead Hollow Run	Headwaters to Mouth	Spigelmyer Run	40.641384 77.391633
Juniata	UNT to Juniata River (RM 39.30)	Headwaters to Mouth	Juniata River	40.606727 77.437293
Juniata	UNT to Juniata River (RM 41.93)	Headwaters to Mouth	Juniata River	40.602490 77.482534
Lancaster	Puddle Duck Creek	Headwaters to Mouth	Peters Creek	39.761111 76.223589
Luzerne	Dreck Creek	Outlet of Reservoir G to Mouth	Hazle Creek	40.960833 75.885000
Luzerne	Maple Spring Brook	Headwaters to Mouth	Kitchen Creek	41.309444 76.276111
Luzerne	Shingle Cabin Brook	Headwaters to Mouth	Kitchen Creek	41.315556 76.273333
Lycoming	UNT to Laurel Run (RM 1.49)	Headwaters to Mouth	Laurel Run	41.290919 76.731668
McKean	UNT to Blacksmith Run (RM 1.23)	Headwaters to Mouth	Blacksmith Run	41.814130 78.471540
Mifflin	Coffee Run	Headwaters to Mouth	Kishacoquillas Creek	40.651501 77.622464
Mifflin	Shindle Run	Headwaters to Mouth	Jacks Creek	40.667781 77.417947
Schuylkill	Still Creek	Headwaters to Still Creek Reservoir	Little Schuylkill River	40.848912 76.003649
Schuylkill	UNT to Mahoning Creek (RM 9.98)	Headwaters to Mouth	Mahoning Creek	40.778316 75.841293

<i>County of Mouth</i>	<i>Stream Name</i>	<i>Section Limits</i>	<i>Tributary to</i>	<i>Mouth Lat/Lon</i>
Schuylkill	UNT to Schuylkill River (RM 107.79)	Headwaters to Mouth	Schuylkill River	40.585483 76.081672
Schuylkill	UNT to UNT to Schuylkill River (RM 109.25)	Headwaters to 1.0 mile upstream of the Mouth	UNT to Schuylkill River (RM 109.25)	40.615314 76.101730
Somerset	Soap Hollow Run	Headwaters to Mouth	Stonycreek River	40.278279 78.924157
Somerset	UNT to May Run (RM 0.09)	Headwaters to Mouth	May Run	39.869573 79.320620
Somerset	UNT to Quemahoning Reservoir (RM 2.06)	Headwaters to Mouth	Quemahoning Reservoir	40.180832 78.963211
Sullivan	Sullivan Branch	Headwaters to Mouth	East Branch Fishing Creek	41.326111 76.345278
Union	UNT to Bear Run (RM 1.90)	Headwaters to Mouth	Bear Run	40.893660 77.298363
Venango	Holeman Run	Headwaters to Stewart Run Road	Allegheny River	41.476705 79.512882
Venango	Husband Run	Headwaters to Mouth	Oil Creek	41.572388 79.647117
Venango	UNT to Oil Creek (RM 11.62)	Headwaters to Mouth	Oil Creek	41.554635 79.651944
Venango	UNT to Oil Creek (RM 11.65)	Headwaters to Mouth	Oil Creek	41.555574 79.656032
Venango	UNT to Oil Creek (RM 13.75)	Headwaters to Mouth	Oil Creek	41.575520 79.650615
Venango	UNT to Oil Creek (RM 14.36)	Headwaters to Mouth	Oil Creek	41.580968 79.644501
Venango	UNT to Oil Creek (RM 15.28)	Headwaters to Mouth	Oil Creek	41.590431 79.644866
Warren	Adams Run	Headwaters to Mouth	Chapman Dam Reservoir	41.747653 79.179874
Warren	UNT to Davis Run (RM 0.11)	Headwaters to Mouth	Davis Run	41.697320 79.219050
Warren	UNT to Davis Run (RM 0.33)	Headwaters to Mouth	Davis Run	41.694791 79.217692
Warren	UNT to Dutchman Run (RM 0.11)	Headwaters to Mouth	Dutchman Run	41.817966 79.103734
Warren	UNT to UNT to Dutchman Run (RM 0.76)	Headwaters to Mouth	UNT to Dutchman Run (RM 1.63)	41.794332 79.105518
Wayne	Indian Orchard Brook	Headwaters to Mouth	Lackawaxen River	41.545834 75.216942
Wyoming	Mill Run	Headwaters to Mouth	North Branch Susquehanna River	41.507222 75.900556

The Commission also will consider the following revisions to the section limits of streams on the list:

<i>County of Mouth</i>	<i>Stream Name</i>	<i>Current Limits</i>	<i>Revised Limits</i>	<i>Tributary To</i>	<i>Mouth Lat/Lon</i>
Berks	Cacoosing Creek	SR 3012 to Mouth	Headwaters to Mouth	Tulpehocken Creek	40.366111 75.995278
Centre	Laurel Run (Port Matilda)	First Tributary downstream SGL 33 to Mouth	Headwaters to Mouth	Bald Eagle Creek	40.802500 78.047222
Elk	Dents Run	Headwaters to Dark Hollow	Headwaters to Mouth	Bennett Branch Sinnemahoning Creek	41.355556 78.263056

County of Mouth	Stream Name	Current Limits	Revised Limits	Tributary To	Mouth Lat/Lon
Northumberland	West Branch Susquehanna River	Outfall of AMD Treatment Facility at RM 234.09 to Shryock Run	Headwaters to Cush Creek	Susquehanna River	40.881111' 76.797222
Tioga	Tioga River	Headwaters to Fall Brook	Headwaters to Morris Run	Chemung River	42.000000 77.114722

Persons with comments, objections or suggestions concerning the classification of the streams listed may submit them in writing to the Executive Director, Fish and Boat Commission, P. O. Box 67000, Harrisburg, PA 17106-7000, within 30 days after publication of this notice in the *Pennsylvania Bulletin*. Comments submitted by facsimile will not be accepted.

Comments also may be submitted electronically by completing the form at [www.fishandboat.com/regcomments](http://www.fishandboat.com/regcomments). If an acknowledgment of electronic comments is not received by the sender within 2 working days, the comments should be retransmitted to ensure receipt. Electronic comments submitted in any other manner will not be accepted.

JOHN A. ARWAY,  
Executive Director

[Pa.B. Doc. No. 16-132. Filed for public inspection January 22, 2016, 9:00 a.m.]

### Proposed Additions to List of Class A Wild Trout Waters; March 2016

The Fish and Boat Commission (Commission) is considering additions to its list of Class A Wild Trout Streams. Under 58 Pa. Code § 57.8a (relating to Class A wild trout streams), it is the Commission's policy to manage self-sustaining Class A wild trout populations as a renewable natural resource to conserve that resource and the angling it provides. Class A wild trout populations represent the best of this Commonwealth's naturally reproducing trout fisheries. With rare exceptions, the Commission manages these stream sections solely for the perpetuation of the wild trout fishery with no stocking.

Criteria developed for Class A Wild Trout fisheries are species specific. Wild Trout Biomass Class Criteria include provisions for:

(i) *Wild Brook Trout Fisheries*

(A) Total brook trout biomass of at least 30 kg/ha (26.7 lbs/acre).

(B) Total biomass of brook trout less than 15 cm (5.9 inches) in total length of at least 0.1 kg/ha (0.089 lbs/acre).

(C) Brook trout biomass must comprise at least 75% of the total trout biomass.

(ii) *Wild Brown Trout Fisheries*

(A) Total brown trout biomass of at least 40 kg/ha (35.6 lbs/acre).

(B) Total biomass of brown trout less than 15 cm (5.9 inches) in total length of at least 0.1 kg/ha (0.089 lbs/acre).

(C) Brown trout biomass must comprise at least 75% of the total trout biomass.

(iii) *Mixed Wild Brook and Brown Trout Fisheries*

(A) Combined brook and brown trout biomass of at least 40 kg/ha (35.6 lbs/acre).

(B) Total biomass of brook trout less than 15 cm (5.9 inches) in total length of at least 0.1 kg/ha (0.089 lbs/acre).

(C) Total biomass of brown trout less than 15 cm (5.9 inches) in total length of at least 0.1 kg/ha (0.089 lbs/acre).

(D) Brook trout biomass must comprise less than 75% of the total trout biomass.

(E) Brown trout biomass must comprise less than 75% of the total trout biomass.

(iv) *Wild Rainbow Trout Fisheries*

Total biomass of rainbow trout less than 15 cm (5.9 inches) in total length of at least 2.0 kg/ha (1.78 lbs/acre).

(v) *Mixed Wild Brook and Rainbow Trout Fisheries*

(A) Combined brook and rainbow trout biomass of at least 40 kg/ha (35.6 lbs/acre).

(B) Total biomass of brook trout less than 15 cm (5.9 inches) in total length of at least 0.1 kg/ha (0.089 lbs/acre).

(C) Total biomass of rainbow trout less than 15 cm (5.9 inches) in total length of at least 0.1 kg/ha (0.089 lbs/acre).

(D) Brook trout biomass shall comprise less than 75% of the total trout biomass.

(E) Rainbow trout biomass shall comprise less than 75% of the total trout biomass.

(vi) *Mixed Wild Brown and Rainbow Trout Fisheries*

(A) Combined brown and rainbow trout biomass of at least 40 kg/ha (35.6 lbs/acre).

(B) Total biomass of brown trout less than 15 cm (5.9 inches) in total length of at least 0.1 kg/ha (0.089 lbs/acre).

(C) Total biomass of rainbow trout less than 15 cm (5.9 inches) in total length of at least 0.1 kg/ha (0.089 lbs/acre).

(D) Brown trout biomass shall comprise less than 75% of the total trout biomass.

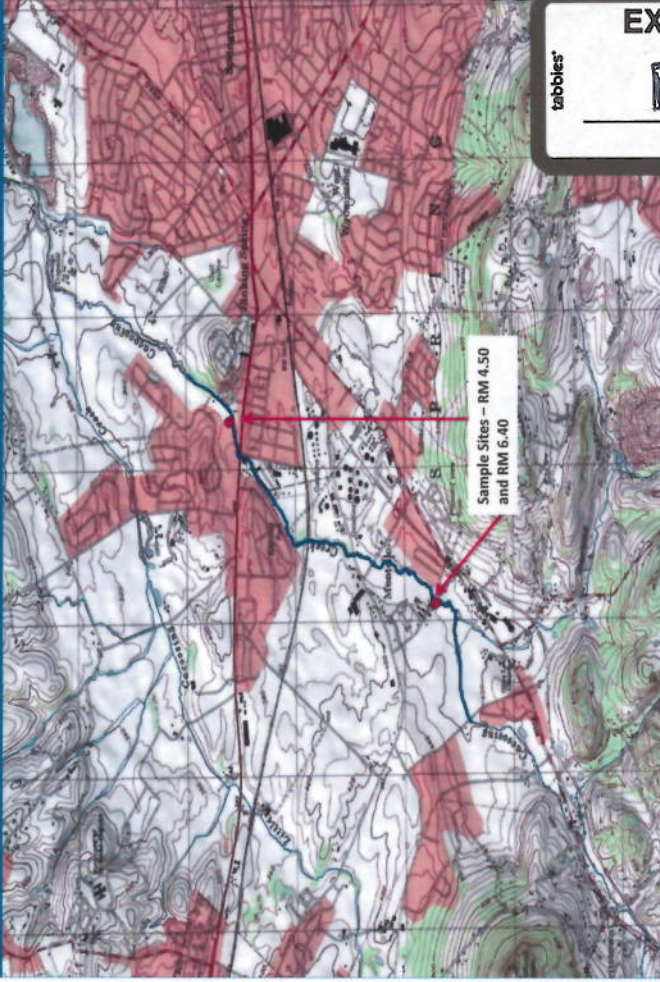
(E) Rainbow trout biomass shall comprise less than 75% of the total trout biomass.

During recent surveys, Commission staff documented the following stream sections to have Class A wild trout populations. The Commission intends to consider adding these waters to its list of Class A Wild Trout Streams at its meeting on March 30 and 31, 2016.

## Beaver Run, Cambria and Clearfield Counties



## Cacoosing Creek, Berks County



tabbles'

EXHIBIT



## Beaver Run, Cambria and Clearfield Counties

Brown Trout RM - 4.75  
Site Length - 355 meters

Length Group (inches)	Population Estimate	Estimated Kg/Ha	Estimated Number/Ha
5	4	0.74	28
6	10	3.08	70
7	9	4.25	63
8	6	4.06	42
9	9	8.53	63
10	9	11.52	63
11	7	11.64	49
12	5	10.65	35
13	1	2.68	7
14	2	6.65	14
16	1	4.88	7
Total	63	68.71	441

## Cacoosing Creek, Berks County

Brown Trout RM - 4.50  
Site Length - 319 meters

Length Group (inches)	Population Estimate	Estimated Kg/Ha	Estimated Number/Ha
2	500	7.11	2800
3	144	5.14	806
5	7	1.03	39
6	71	17.44	398
7	62	23.32	347
8	11	5.98	62
9	16	12.09	90
10	20	20.41	112
11	8	10.60	45
12	3	5.10	17
13	1	2.14	6
14	2	5.30	11
16	1	3.89	6
20	1	7.64	6
Total	847	127.19	4745

Brown Trout RM - 6.40  
Site Length - 291 meters

Length Group (inches)	Population Estimate	Estimated Kg/Ha	Estimated Number/Ha
2	217	4.11	1621
3	16	0.76	119
6	23	7.53	172
7	21	10.54	157
8	4	2.90	30
9	10	10.08	75
10	6	8.17	45
11	4	7.07	30
12	5	11.33	37
Total	306	62.49	2286

## Still Creek, Carbon County



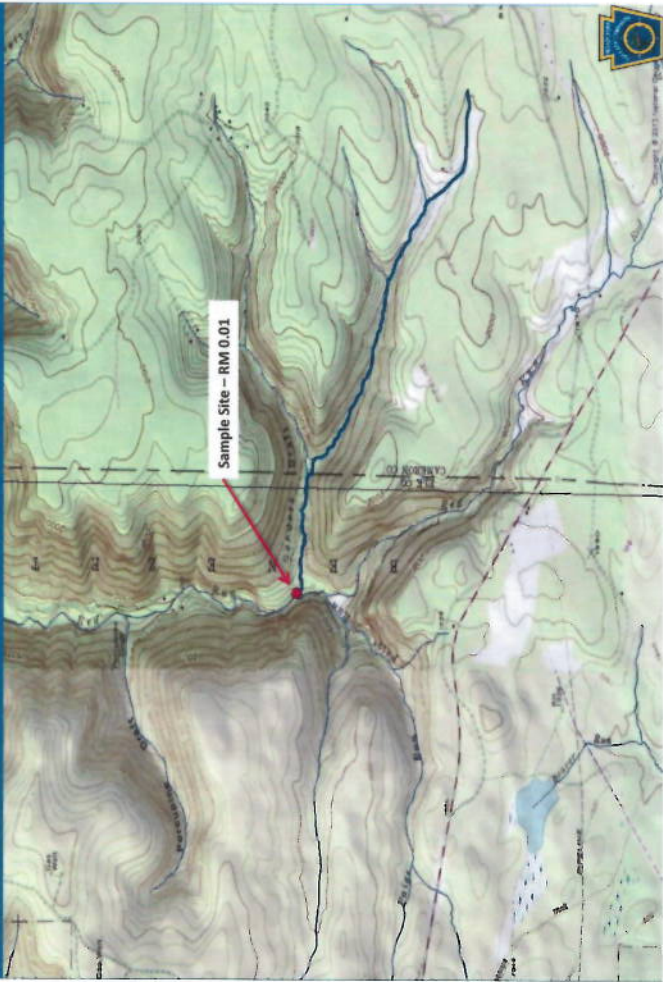
Brook Trout RM - 3.67  
Site Length - 304 meters

Length Group (inches)	Population Estimate	Estimated Kg/Ha	Estimated Number/Ha
1	1	0.01	9
2	145	3.17	1289
3	13	0.69	116
4	70	8.52	622
5	8	1.74	71
6	12	4.38	107
7	8	4.54	71
8	9	7.41	80
9	1	1.16	9
10	1	1.60	9
Total	268	33.22	2383

Brown Trout RM - 3.67  
Site Length - 304 meters

Length Group (inches)	Population Estimate	Estimated Kg/Ha	Estimated Number/Ha
5	1	9	0.23
7	4	36	2.39
8	2	18	1.73
10	3	27	4.86
11	1	9	2.10
12	1	9	2.70
Total	12	108	14.01

## Sanders Draft Run, Cameron and Elk Counties



Brook Trout RM - 0.01  
Site Length - 380 meters

Length Group (inches)	Population Estimate	Estimated Kg/Ha	Estimated Number/Ha
2	20	0.82	333
3	7	0.69	117
4	43	9.81	717
5	21	8.56	350
6	8	5.48	133
7	3	3.19	50
8	2	3.09	33
9	2	4.36	33
Total	106	36.00	1766

## Still Creek, Carbon County

## Sanders Draft Run, Cameron and Elk Counties



# Laurel Run (Port Matilda), continued

**Brook Trout RM - 2.30**  
Site Length - 216 meters

Length Group (inches)	Population Estimate	Estimated Kg/Ha	Estimated Number/Ha
2	6	0.18	72
3	10	0.71	120
4	2	0.33	24
5	11	3.22	132
6	12	5.90	144
7	2	1.53	24
8	4	4.43	48
Total	47	16.30	564

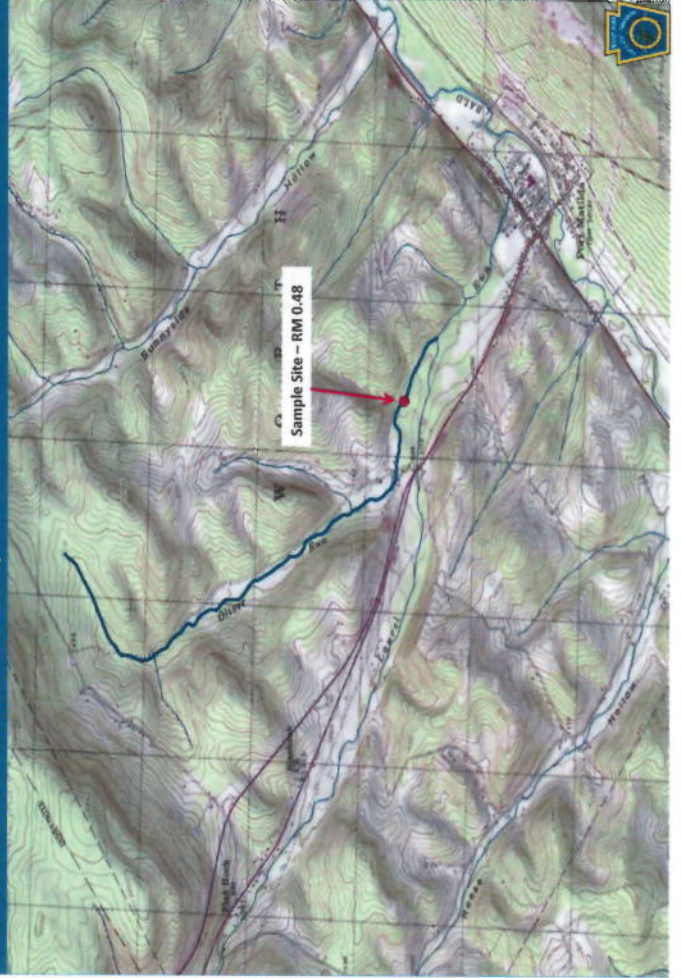
**Brown Trout RM - 2.30**  
Site Length - 216 meters

Length Group (inches)	Population Estimate	Estimated Kg/Ha	Estimated Number/Ha
2	1	0.03	12
4	4	0.69	48
5	6	1.89	72
6	8	4.20	96
7	10	8.04	120
8	6	6.97	72
9	7	11.30	84
10	3	6.54	36
11	6	16.99	72
12	1	3.63	12
13	3	13.71	36
Total	55	73.99	660

# Laurel Run (Port Matilda), Centre County



# Oliver Run, Centre County



# Laurel Run (Port Matilda), Centre County

**Brook Trout RM - 1.24**  
Site Length - 365 meters

Length Group (inches)	Population Estimate	Estimated Kg/Ha	Estimated Number/Ha
3	1	0.04	6
5	1	0.16	6
Total	2	0.20	12

**Brown Trout RM - 1.24**  
Site Length - 365 meters

Length Group (inches)	Population Estimate	Estimated Kg/Ha	Estimated Number/Ha
2	61	0.98	167
3	11	0.45	30
4	1	0.09	3
5	15	2.50	41
6	17	4.74	47
7	12	5.12	33
8	16	9.87	44
9	11	9.43	30
10	6	6.95	16
11	4	6.02	11
13	1	2.43	3
Total	155	48.58	425



## Slide Hollow Run, Centre County

Brook Trout RM - 0.00  
Site Length - 100 meters

Length Group (inches)	Population Estimate	Estimated Kg/Ha	Estimated Number/Ha
3	3	0.98	165
4	2	1.50	110
5	4	5.37	220
6	1	2.26	55
7	2	7.02	110
8	2	10.17	110
9	1	7.19	55
10	1	9.86	55
Total	16	44.35	880

Brook Trout RM - 0.75  
Site Length - 250 meters

Length Group (inches)	Population Estimate	Estimated Kg/Ha	Estimated Number/Ha
2	22	1.35	550
3	42	6.25	1050
4	20	6.85	500
5	24	14.67	600
6	10	10.27	250
7	10	15.97	250
8	2	4.63	50
9	1	3.27	25
Total	131	63.26	3275



## Oliver Run, Centre County

Brook Trout RM - 0.48  
Site Length - 600 meters

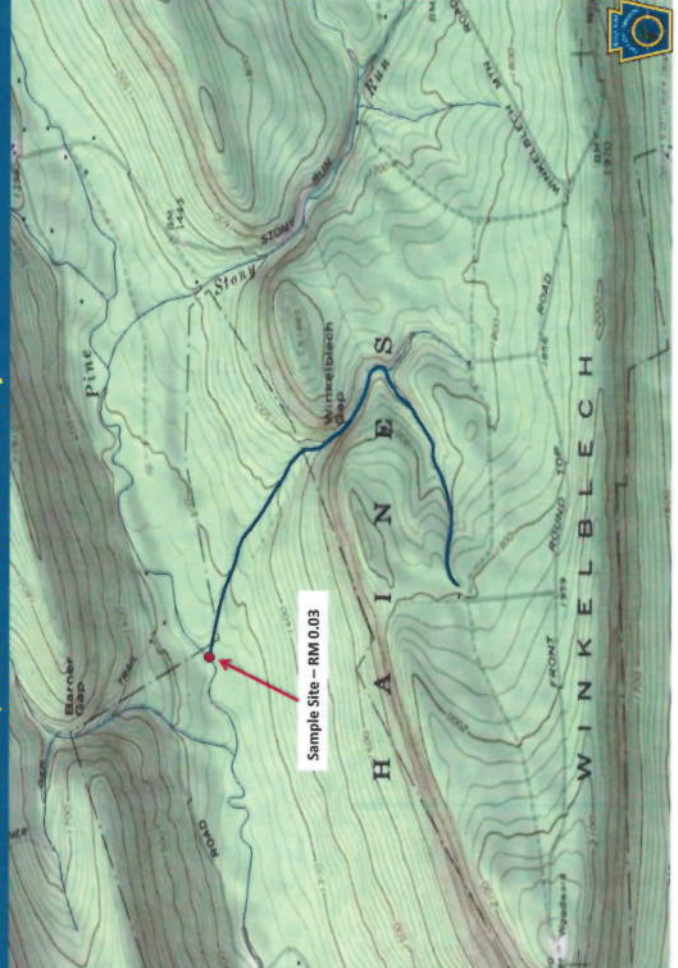
Length Group (inches)	Population Estimate	Estimated Kg/Ha	Estimated Number/Ha
2	3	0.07	27
3	6	0.32	54
4	2	0.25	18
5	1	0.22	9
8	1	0.84	9
Total	13	1.70	117

Brown Trout RM - 0.48  
Site Length - 600 meters

Length Group (inches)	Population Estimate	Estimated Kg/Ha	Estimated Number/Ha
2	11	0.25	100
3	26	1.50	236
5	11	2.62	100
6	20	7.95	181
7	13	7.91	118
8	6	5.28	54
9	2	2.44	18
10	6	9.91	54
11	2	4.29	18
12	4	10.99	36
13	2	6.92	18
14	3	12.86	27
Total	106	72.92	960



## Winkelblech Gap Run, Centre County



## Slide Hollow Run, Centre County



## Hogback Run, Clearfield County

Brook Trout RM - 0.00  
Site Length - 435 meters

Length Group (inches)	Population Estimate	Estimated Kg/Ha	Estimated Number/Ha
2	6	0.13	53
3	115	6.10	1025
4	70	8.54	624
5	31	6.75	276
6	31	11.35	276
7	13	7.40	116
8	3	2.48	27
9	1	1.17	9
Total	270	43.92	2406

Brown Trout RM - 0.00  
Site Length - 435 meters

Length Group (inches)	Population Estimate	Estimated Kg/Ha	Estimated Number/Ha
10	1	1.62	9
Total	1	1.62	9



## Winkelblech Gap Run, Centre County

Brook Trout RM - 0.03  
Site Length - 275 meters

Length Group (inches)	Population Estimate	Estimated Kg/Ha	Estimated Number/Ha
1	2	0.10	93
2	22	2.52	1023
3	36	9.97	1674
4	14	8.92	651
5	13	14.78	605
6	1	1.91	47
Total	88	38.20	4093



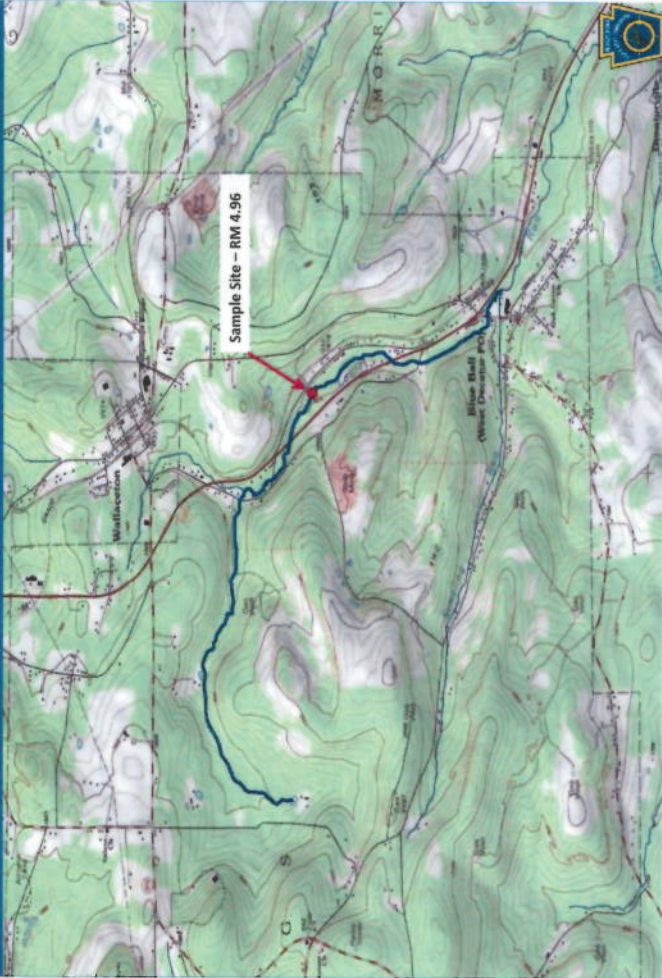
## Kratzer Run, Clearfield County



## Hogback Run, Clearfield County



## Laurel Run, Clearfield County



Brook Trout RM - 4.96  
Site Length - 525 meters

Length Group (inches)	Population Estimate	Estimated Kg/Ha	Estimated Number/Ha
1	1	0.01	6
2	15	0.21	87
3	80	2.76	463
4	77	6.11	446
5	44	6.23	255
6	26	6.19	151
7	21	7.77	122
8	6	3.22	35
9	2	1.52	12
Total	272	34.02	1577

## Laurel Run, Clearfield County

## Kratzer Run, Clearfield County

Brook Trout RM - 0.24  
Site Length - 236 meters

Length Group (inches)	Population Estimate	Estimated Kg/Ha	Estimated Number/Ha
3	10	0.76	128
5	1	0.31	13
Total	11	1.07	141

Brown Trout RM - 0.24  
Site Length - 236 meters

Length Group (inches)	Population Estimate	Estimated Kg/Ha	Estimated Number/Ha
3	12	0.98	154
4	15	2.76	193
6	2	1.13	26
7	3	2.56	39
8	3	3.74	39
11	1	3.04	13
12	1	3.90	13
13	2	9.81	26
14	1	6.07	13
16	1	8.93	13
Total	41	42.95	529

## Kratzer Run, continued

Brown Trout RM - 2.14  
Site Length - 860 meters

Length Group (inches)	Population Estimate	Estimated Kg/Ha	Estimated Number/Ha
2	2	0.02	9
3	62	1.80	283
4	42	2.75	192
5	1	0.12	5
6	6	1.20	27
7	22	6.74	100
8	16	7.08	73
9	6	3.69	27
10	7	5.82	32
11	2	2.16	9
12	3	4.15	14
13	4	6.97	18
14	2	4.32	9
15	1	2.64	5
17	1	3.94	5
Total	177	53.40	808

Brook Trout RM - 2.14  
Site Length - 860 meters

Length Group (inches)	Population Estimate	Estimated Kg/Ha	Estimated Number/Ha
3	12	0.33	55
4	4	0.25	18
6	1	0.19	5
9	1	0.60	5
Total	18	1.37	83

## Patchin Run, Clearfield County



## North Run, Clearfield County



## Patchin Run, Clearfield County

Brook Trout RM - 0.50  
Site Length - 285 meters

Length Group (inches)	Population Estimate	Estimated Kg/Ha	Estimated Number/Ha
2	108	4.96	2015
3	39	4.33	728
4	39	9.96	728
5	26	11.86	485
6	2	1.53	37
7	6	7.15	112
8	2	3.45	37
Total	222	43.24	4142

## North Run, Clearfield County

Brook Trout RM - 0.15  
Site Length - 270 meters

Length Group (inches)	Population Estimate	Estimated Kg/Ha	Estimated Number/Ha
2	114	9.19	3738
3	22	4.29	721
4	15	6.73	492
5	5	4.01	164
6	1	1.35	33
7	1	2.09	33
8	1	3.04	33
9	2	8.58	66
Total	161	39.28	52880

## UNT To Gifford Run (RM 4.66), Clearfield County



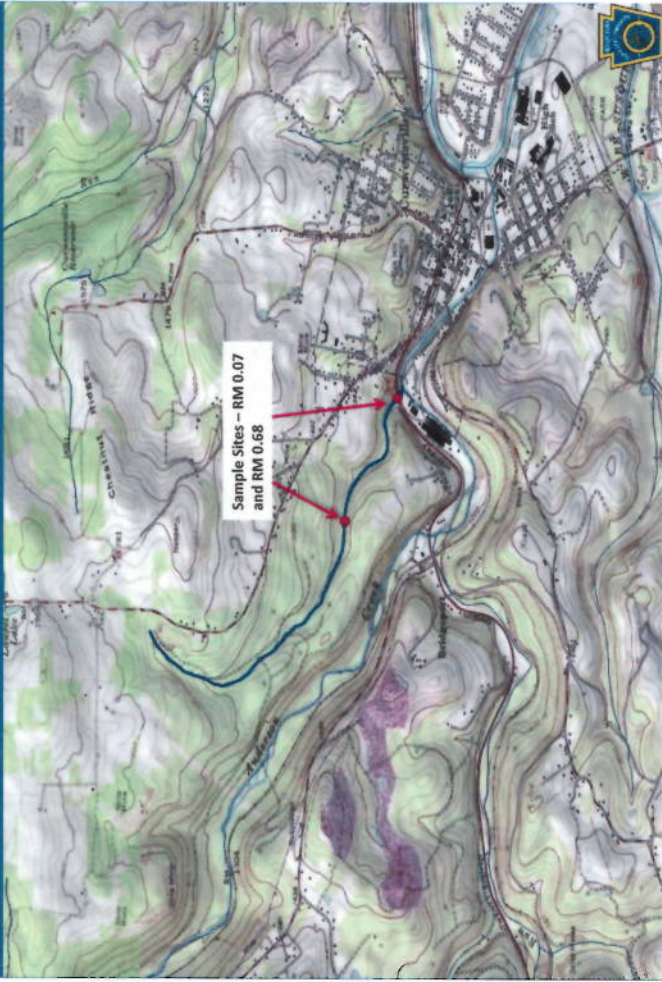
## UNT To Gifford Run (RM 4.66), Clearfield County

Brook Trout RM - 0.02  
Site Length - 115 meters

Length Group (inches)	Population Estimate	Estimated Kg/Ha	Estimated Number/Ha
2	6	1.64	52
3	6	3.97	52
4	15	22.82	130
5	3	8.15	26
6	1	4.57	9
Total	31	41.15	269



## UNT To Anderson Creek (Roaring Run), Clearfield County



## UNT To Anderson Creek (Roaring Run), Clearfield County

Brook Trout RM - 0.07  
Site Length - 350 meters

Length Group (inches)	Population Estimate	Estimated Kg/Ha	Estimated Number/Ha
2	33	2.39	971
3	26	4.55	765
4	25	10.07	735
5	11	7.91	324
6	4	4.83	118
7	3	5.64	88
8	2	5.45	59
Total	104	40.84	3060

Brook Trout RM - 0.68  
Site Length - 120 meters

Length Group (inches)	Population Estimate	Estimated Kg/Ha	Estimated Number/Ha
2	24	6.15	2500
3	11	6.82	1146
4	9	12.84	938
5	6	15.28	625
6	2	8.56	208
7	4	26.62	417
Total	56	76.27	5384



### UNT To Bear Run (RM 2.92), Clearfield and Indiana Counties



### UNT To Bear Run (RM 2.92), Clearfield and Indiana Counties

Brook Trout RM - 0.00  
Site Length - 340 meters

Length Group (inches)	Population Estimate	Estimated Kg/Ha	Estimated Number/Ha
2	53	2.95	1199
3	42	5.66	950
4	25	7.75	566
5	13	7.19	294
6	3	2.79	68
7	6	8.67	136
Total	142	35.01	3213



### UNT To Hogback Run (RM 0.18), Clearfield County



### UNT To Hogback Run (RM 0.18), Clearfield County

Brook Trout RM - 0.00  
Site Length - 135 meters

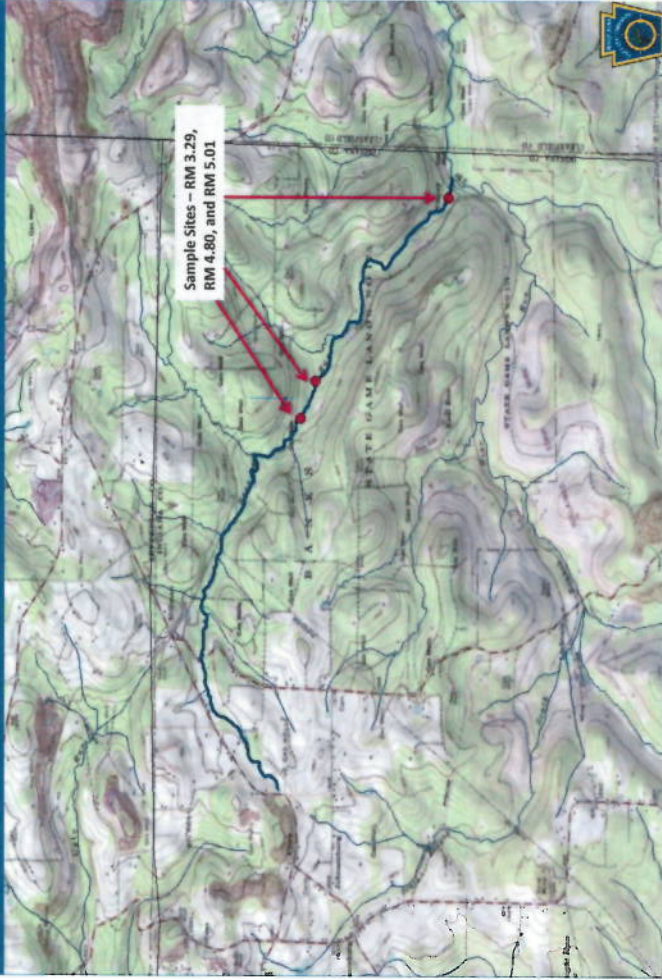
Length Group (inches)	Population Estimate	Estimated Kg/Ha	Estimated Number/Ha
2	9	0.99	402
3	18	4.78	804
4	6	3.67	268
5	12	13.10	536
6	6	11.01	268
7	3	8.55	134
Total	54	42.10	2412

Brown Trout RM - 0.00  
Site Length - 135 meters

Length Group (inches)	Population Estimate	Estimated Kg/Ha	Estimated Number/Ha
7	1	3.00	45
Total	1	3.00	45



## Bear Run, Indiana County



## Bear Run, Indiana County

Brook Trout RM - 3.29  
Site Length - 348 meters

Length Group (inches)	Population Estimate	Estimated Kg/Ha	Estimated Number/Ha
2	56	1.61	654
3	45	3.13	526
4	16	2.56	187
5	22	6.28	257
6	5	2.40	58
7	6	4.48	70
8	5	5.41	58
9	1	1.53	12
Total	156	27.40	1822

Brown Trout RM - 3.29  
Site Length - 348 meters

Length Group (inches)	Population Estimate	Estimated Kg/Ha	Estimated Number/Ha
9	1	1.58	12
Total	1	1.58	12

## Porcupine Draft Run, Elk County



## Porcupine Draft Run, Elk County

Brook Trout RM - 0.00  
Site Length - 235 meters

Length Group (inches)	Population Estimate	Estimated Kg/Ha	Estimated Number/Ha
2	215	13.56	5513
3	5	0.76	128
4	38	13.34	974
5	12	7.52	308
6	4	4.21	103
Total	274	39.39	7026

## Little Lehigh Creek, Lehigh County

**Brown Trout RM - 4.94**  
Site Length - 355 meters

Length Group (inches)	Population Estimate	Estimated Kg/Ha	Estimated Number/Ha
3	76	1.11	174
4	13	0.43	30
5	3	0.18	7
6	5	0.50	11
7	94	14.48	216
8	175	38.96	401
9	84	25.99	193
10	64	26.75	147
11	41	22.26	94
12	22	15.31	50
13	7	6.13	16
14	3	3.25	7
15	2	2.65	5
16	6	9.56	14
17	2	3.95	5
18	1	2.41	2
19	1	2.75	2
Total	599	176.67	1374

**Brown Trout RM - 4.36**  
Site Length - 276 meters

Length Group (inches)	Population Estimate	Estimated Kg/Ha	Estimated Number/Ha
2	10	0.05	20
3	17	0.22	34
4	9	0.26	18
6	16	1.42	32
7	226	30.77	458
8	203	39.94	411
9	77	21.05	156
10	79	29.18	160
11	45	21.59	91
12	18	11.07	36
13	1	0.77	2
14	1	0.96	2
Total	702	157.28	1420

## Bear Run, continued

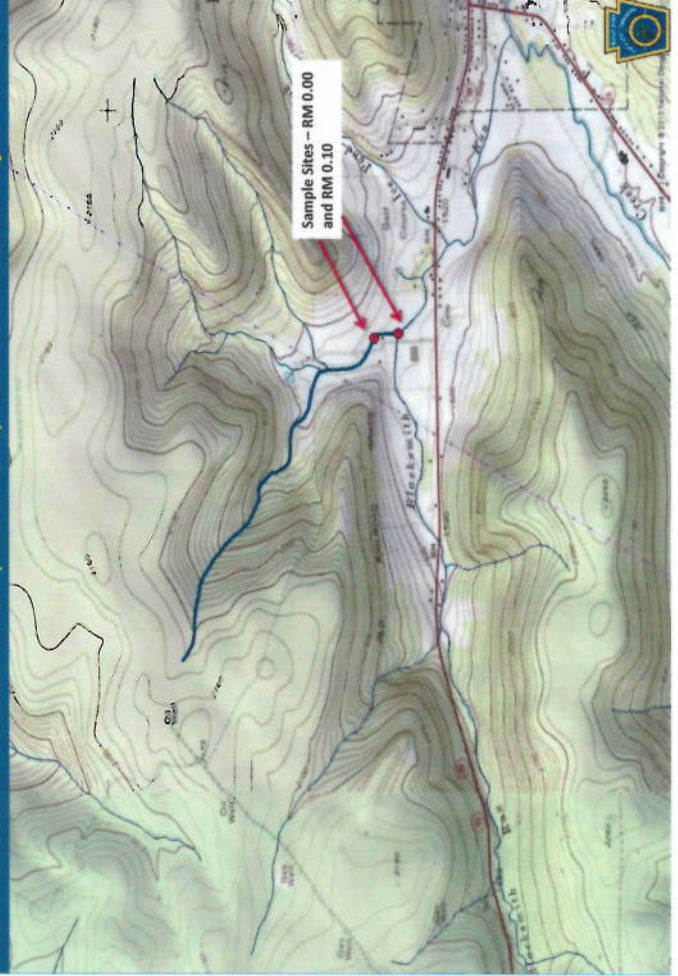
**Brook Trout RM - 4.80**  
Site Length - 345 meters

Length Group (inches)	Population Estimate	Estimated Kg/Ha	Estimated Number/Ha
2	150	5.43	2206
3	79	6.92	1162
4	34	6.85	500
5	79	28.40	1162
6	26	15.71	382
7	18	16.91	265
8	3	4.08	44
10	1	2.64	15
Total	390	86.94	5736

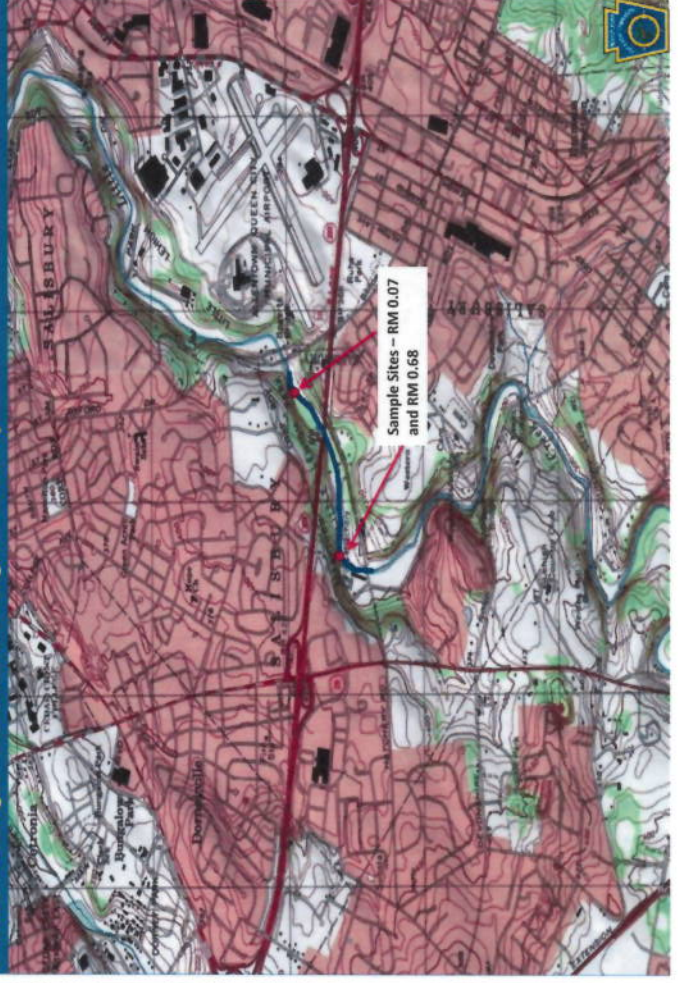
**Brook Trout RM - 5.01**  
Site Length - 328 meters

Length Group (inches)	Population Estimate	Estimated Kg/Ha	Estimated Number/Ha
2	33	0.87	356
3	42	2.69	453
4	11	1.62	119
5	41	10.80	442
6	16	7.09	172
7	12	8.26	129
8	2	2.00	22
9	1	1.41	11
11	1	2.53	11
Total	159	37.27	1715

## UNT To Blacksmith Run (RM 1.23), McKean County



## Little Lehigh Creek, Lehigh County





## Double Run, Sullivan County

Brook Trout RM - 0.77  
Site Length - 303 meters

Length Group (inches)	Population Estimate	Estimated Kg/Ha	Estimated Number/Ha
2	187	4.41	1795
3	33	1.89	317
4	65	8.54	624
5	56	13.14	537
6	8	3.15	77
7	2	1.23	19
Total	351	32.36	3369



## UNT To Blacksmith Run (RM 1.23), McKean County

Brook Trout RM - 0.00  
Site Length - 100 meters

Length Group (inches)	Population Estimate	Estimated Kg/Ha	Estimated Number/Ha
1	3	0.13	125
2	7	0.72	292
3	3	0.74	125
4	4	2.28	167
5	3	3.06	125
6	4	6.85	167
7	2	5.32	83
10	2	14.95	83
Total	28	34.05	1167

Brook Trout RM - 0.10  
Site Length - 200 meters

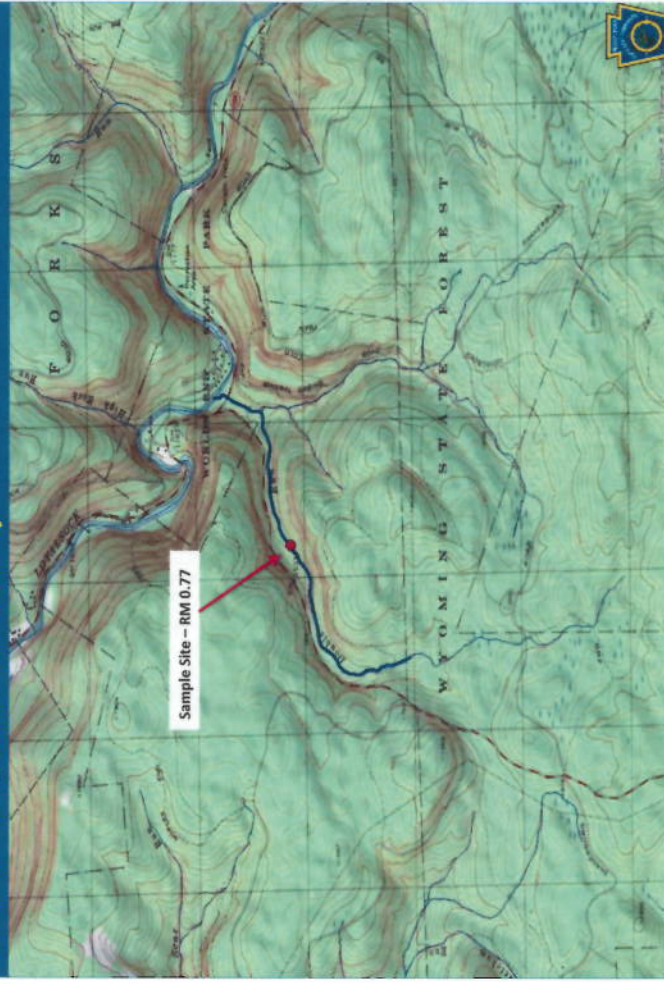
Length Group (inches)	Population Estimate	Estimated Kg/Ha	Estimated Number/Ha
2	37	2.22	902
3	23	3.34	561
5	7	4.17	171
6	9	9.02	220
7	6	9.35	146
8	1	2.26	24
9	2	6.38	49
10	1	4.38	24
Total	86	41.12	2097



## Blymire Hollow Run, York County



## Double Run, Sullivan County



# Blymire Hollow Run, York County

Brown Trout RM - 0.80  
 Site Length - 288 meters

Length Group (Inches)	Population Estimate	Estimated Kg/Ha	Estimated Number/Ha
3	9	0.39	60
4	65	6.57	458
5	59	11.04	420
6	3	0.95	22
7	15	7.18	107
8	16	11.33	117
9	6	5.75	43
10	1	1.67	9
14	1	3.35	7
Total	175	48.23	1243





County of Mouth	Stream Name	Current Limits	Revised Limits	Lat/Lon
Northumberland	West Branch Susquehanna River	Outfall of AMD Treatment Facility at RM 234.09 to Shryock Run	Headwaters to Cush Creek	40.881111 76.797222
Tioga	Tioga River	Headwaters to Fall Brook	Headwaters to Morris Run	42.000000 77.114722

Persons with comments, objections or suggestions concerning the classification of the streams listed may submit them in writing to the Executive Director, Fish and Boat Commission, P. O. Box 67000, Harrisburg, PA 17106-7000, within 30 days after publication of this notice in the *Pennsylvania Bulletin*. Comments submitted by facsimile will not be accepted.

Comments also may be submitted electronically by completing the form at [www.fishandboat.com/regcomments](http://www.fishandboat.com/regcomments). If an acknowledgment of electronic comments is not received by the sender within 2 working days, the comments should be retransmitted to ensure receipt. Electronic comments submitted in any other manner will not be accepted.

JOHN A. ARWAY,  
Executive Director

[Pa.B. Doc. No. 16-132. Filed for public inspection January 22, 2016, 9:00 a.m.]

### Proposed Additions to List of Class A Wild Trout Waters; March 2016

The Fish and Boat Commission (Commission) is considering additions to its list of Class A Wild Trout Streams. Under 58 Pa. Code § 57.8a (relating to Class A wild trout streams), it is the Commission's policy to manage self-sustaining Class A wild trout populations as a renewable natural resource to conserve that resource and the angling it provides. Class A wild trout populations represent the best of this Commonwealth's naturally reproducing trout fisheries. With rare exceptions, the Commission manages these stream sections solely for the perpetuation of the wild trout fishery with no stocking.

Criteria developed for Class A Wild Trout fisheries are species specific. Wild Trout Biomass Class Criteria include provisions for:

#### (i) Wild Brook Trout Fisheries

(A) Total brook trout biomass of at least 30 kg/ha (26.7 lbs/acre).

(B) Total biomass of brook trout less than 15 cm (5.9 inches) in total length of at least 0.1 kg/ha (0.089 lbs/acre).

(C) Brook trout biomass must comprise at least 75% of the total trout biomass.

#### (ii) Wild Brown Trout Fisheries

(A) Total brown trout biomass of at least 40 kg/ha (35.6 lbs/acre).

(B) Total biomass of brown trout less than 15 cm (5.9 inches) in total length of at least 0.1 kg/ha (0.089 lbs/acre).

(C) Brown trout biomass must comprise at least 75% of the total trout biomass.

#### (iii) Mixed Wild Brook and Brown Trout Fisheries

(A) Combined brook and brown trout biomass of at least 40 kg/ha (35.6 lbs/acre).

(B) Total biomass of brook trout less than 15 cm (5.9 inches) in total length of at least 0.1 kg/ha (0.089 lbs/acre).

(C) Total biomass of brown trout less than 15 cm (5.9 inches) in total length of at least 0.1 kg/ha (0.089 lbs/acre).

(D) Brook trout biomass must comprise less than 75% of the total trout biomass.

(E) Brown trout biomass must comprise less than 75% of the total trout biomass.

#### (iv) Wild Rainbow Trout Fisheries

Total biomass of rainbow trout less than 15 cm (5.9 inches) in total length of at least 2.0 kg/ha (1.78 lbs/acre).

#### (v) Mixed Wild Brook and Rainbow Trout Fisheries

(A) Combined brook and rainbow trout biomass of at least 40 kg/ha (35.6 lbs/acre).

(B) Total biomass of brook trout less than 15 cm (5.9 inches) in total length of at least 0.1 kg/ha (0.089 lbs/acre).

(C) Total biomass of rainbow trout less than 15 cm (5.9 inches) in total length of at least 0.1 kg/ha (0.089 lbs/acre).

(D) Brook trout biomass shall comprise less than 75% of the total trout biomass.

(E) Rainbow trout biomass shall comprise less than 75% of the total trout biomass.

#### (vi) Mixed Wild Brown and Rainbow Trout Fisheries

(A) Combined brown and rainbow trout biomass of at least 40 kg/ha (35.6 lbs/acre).

(B) Total biomass of brown trout less than 15 cm (5.9 inches) in total length of at least 0.1 kg/ha (0.089 lbs/acre).

(C) Total biomass of rainbow trout less than 15 cm (5.9 inches) in total length of at least 0.1 kg/ha (0.089 lbs/acre).

(D) Brown trout biomass shall comprise less than 75% of the total trout biomass.

(E) Rainbow trout biomass shall comprise less than 75% of the total trout biomass.

During recent surveys, Commission staff documented the following stream sections to have Class A wild trout populations. The Commission intends to consider adding these waters to its list of Class A Wild Trout Streams at its meeting on March 30 and 31, 2016.

County	Stream	Section	Limits	Tributary to	Mouth Lat/Lon	Brook Trout (kg/ha)	Brown Trout (kg/ha)	Rainbow Trout (kg/ha)	Length (miles)	Survey Year
Berks	Cacoosing Creek	2	Wernersville Road to 800 meters downstream from SR 422	Tulpehocken Creek	40.366111 75.995270	—	94.89	—	2.73	2015
Cambria/ Clearfield	Beaver Run	1	Headwaters to SR 3004 (Sylvia Road)	West Branch Susquehanna River	40.780749 78.780070	—	68.71	—	2.09	2015
Cameron/ Elk	Sanders Draft Run	1	Headwaters to Mouth	Red Run	41.275555 78.243332	36.00	—	—	2.34	2015
Carbon	Still Creek	1	Headwaters to Still Creek Reservoir	Little Schuylkill River	40.848912 76.003649	33.22	14.01	—	1.85	2015
Centre	Laurel Run (Port Matilda)	2	Vicinity of Black Oak Church to Mouth	Bald Eagle Creek	40.802500 78.047222	8.23	61.29	—	3.03	2015
Centre	Oliver Run	1	Headwaters to Mouth	Laurel Run (Port Matilda)	40.807957 78.062294	1.70	72.92	—	3.20	2015
Centre	Slide Hollow Run	1	Headwaters to Mouth	Sugar Camp Run	41.108060 77.680743	53.82	—	—	2.03	2015
Centre	Winkelblech Gap Run	1	Headwaters to Mouth	Pine Creek	40.935263 77.319164	38.20	—	—	1.60	2015
Clearfield	Hogback Run	1	Headwaters to Mouth	West Branch Susquehanna River	40.965580 78.490639	43.92	1.62	—	2.45	2015
Clearfield	Kratzer Run	1	Headwaters to Mouth	Anderson Creek	40.976410 78.547333	1.21	48.15	—	6.46	2015
Clearfield	North Run	1	Headwaters to Mouth	West Branch Susquehanna River	40.868521 78.758231	39.28	—	—	1.59	2015
Clearfield	Patchin Run	1	Headwaters to Mouth	West Branch Susquehanna River	40.782009 78.779752	43.24	—	—	1.54	2015
Clearfield	UNT to Anderson Creek (Roaring Run)	1	Headwaters to Mouth	Anderson Creek	40.979019 78.536476	58.55	—	—	2.13	2015
Clearfield	UNT to Gifford Run (RM 4.66)	1	Headwaters to Mouth	Gifford Run	41.182584 78.287269	41.15	—	—	0.65	2015

County	Stream	Section	Limits	Tributary to	Mouth Lat/Lon	Brook Trout (kg/ha)	Brown Trout (kg/ha)	Rainbow Trout (kg/ha)	Length (miles)	Survey Year
Clearfield	UNT to Hogback Run (RM 0.18)	1	Headwaters to Mouth	Hogback Run	40.963415 78.491269	42.10	3.00	—	0.72	2015
Clearfield/ Indiana	UNT to Bear Run (RM 2.92)	1	Headwaters to Mouth	Bear Run	40.877265 78.803804	35.01	—	—	2.08	2015
Elk	Porcupine Draft Run	1	Headwaters to Mouth	Red Run	41.289780 78.245895	39.39	—	—	1.28	2015
Indiana	Bear Run	1	Headwaters to South Branch Bear Run	West Branch Susquehanna River	40.881111 78.861948	50.54	0.53	—	3.40	2015
Lehigh	Little Lehigh Creek	8	Fish Hatchery Road Bridge (SR 2010) to 134 meters upstream Hogerts Covered Bridge	Lehigh River	40.597222 75.449167	—	167.00	—	0.82	2013
McKean	UNT to Blacksmith Run (RM 1.23)	1	Headwaters to Mouth	Blacksmith Run	41.814130 78.471540	37.58	—	—	1.59	2015
Sullivan	Double Run	2	Shrewsbury/ Forks Township line to Mouth	Loyalsock Creek	41.466667 76.578611	32.36	—	—	1.87	2015
York	Blymire Hollow Run	2	Mont Road Bridge (T-580) to Mouth	East Branch Codorus Creek	39.832222 76.646111	—	48.23	—	1.87	2015

Persons with comments, objections or suggestions concerning the additions are invited to submit comments in writing to the Executive Director, Fish and Boat Commission, P. O. Box 67000, Harrisburg, PA 17106-7000, within 30 days after publication of this notice in the *Pennsylvania Bulletin*. Comments also may be submitted electronically by completing the form at [www.fishandboat.com/regcomments](http://www.fishandboat.com/regcomments). If an acknowledgment of electronic comments is not received by the sender within 2 working days, the comments should be retransmitted to ensure receipt. Electronic comments submitted in any other manner will not be accepted.

JOHN A. ARWAY,  
*Executive Director*

[Pa.B. Doc. No. 16-133. Filed for public inspection January 22, 2016, 9:00 a.m.]

## INSURANCE DEPARTMENT

### Genworth Life Insurance Company (GEFA-130373044); Rate Increase Filing for Individual LTC Forms

Genworth Life Insurance Company is requesting approval to increase the premium an aggregate 118% on 6,316 policyholders with the following individual policy forms: the 7030 Series and 7032 Series. The company is requesting a 130% increase on policies with unlimited benefit periods and a 111% increase on policies with limited benefit periods.

Unless formal administrative action is taken prior to April 7, 2016, the subject filing may be deemed approved by operation of law.

A copy of the filing is available on the Insurance Department's (Department) web site at [www.insurance.pa.gov](http://www.insurance.pa.gov). To view these filing notices, hover the cursor over "Consumers" in the blue bar at the top of the webpage then select "Product Notices" from the drop down menu.

Copies of the filing are also available for public inspection, by appointment, during normal working hours at the Department's Harrisburg office.

Interested parties are invited to submit written comments, suggestions or objections to James Laverty, Actuary, Insurance Department, Insurance Product Regulation, Room 1311, Strawberry Square, Harrisburg, PA 17120, [jlaverty@pa.gov](mailto:jlaverty@pa.gov) within 30 days after publication of this notice in the *Pennsylvania Bulletin*.

TERESA D. MILLER,  
*Insurance Commissioner*

[Pa.B. Doc. No. 16-134. Filed for public inspection January 22, 2016, 9:00 a.m.]

### Genworth Life Insurance Company (GEFA-130373053); Rate Increase Filing for Individual LTC Forms

Genworth Life Insurance Company is requesting approval to increase the premium an aggregate 67% on 14,127 policyholders with the following individual policy

forms: the 7035 Series. The company is requesting a 78% increase on policies with unlimited benefit periods and a 60% increase on policies with limited benefit periods.

Unless formal administrative action is taken prior to April 7, 2016, the subject filing may be deemed approved by operation of law.

A copy of the filing is available on the Insurance Department's (Department) web site at [www.insurance.pa.gov](http://www.insurance.pa.gov). To view these filing notices, hover the cursor over "Consumers" in the blue bar at the top of the webpage then select "Product Notices" from the drop down menu.

Copies of the filing are also available for public inspection, by appointment, during normal working hours at the Department's Harrisburg office.

Interested parties are invited to submit written comments, suggestions or objections to James Laverty, Actuary, Insurance Department, Insurance Product Regulation, Room 1311, Strawberry Square, Harrisburg, PA 17120, [jlaverty@pa.gov](mailto:jlaverty@pa.gov) within 30 days after publication of this notice in the *Pennsylvania Bulletin*.

TERESA D. MILLER,  
*Insurance Commissioner*

[Pa.B. Doc. No. 16-135. Filed for public inspection January 22, 2016, 9:00 a.m.]

### Genworth Life Insurance Company (GEFA-130373076); Rate Increase Filing for Individual LTC Forms

Genworth Life Insurance Company is requesting approval to increase the premium an aggregate 89% on 3,090 policyholders with the following individual policy forms: the 7000 Series and 7020 Series. The company is requesting a 103% increase on policies with unlimited benefit periods and a 67% increase on policies with limited benefit periods.

Unless formal administrative action is taken prior to April 7, 2016, the subject filing may be deemed approved by operation of law.

A copy of the filing is available on the Insurance Department's (Department) web site at [www.insurance.pa.gov](http://www.insurance.pa.gov). To view these filing notices, hover the cursor over "Consumers" in the blue bar at the top of the webpage then select "Product Notices" from the drop down menu.

Copies of the filing are also available for public inspection, by appointment, during normal working hours at the Department's Harrisburg office.

Interested parties are invited to submit written comments, suggestions or objections to James Laverty, Actuary, Insurance Department, Insurance Product Regulation, Room 1311, Strawberry Square, Harrisburg, PA 17120, [jlaverty@pa.gov](mailto:jlaverty@pa.gov) within 30 days after publication of this notice in the *Pennsylvania Bulletin*.

TERESA D. MILLER,  
*Insurance Commissioner*

[Pa.B. Doc. No. 16-136. Filed for public inspection January 22, 2016, 9:00 a.m.]

### Repeal of Outdated Notices Regarding Form and Rate Filings; Filing Requirements under the Accident and Health Filing Reform Act; Notice 2016-01

Certain accident and health insurance policy forms, subject to filing under section 3(a) of the Accident and Health Filing Reform Act (40 P. S. § 3801.303(a)), added