

Lt. Lehigh Creek - Case Study

- Heavily pastured stream
- Stream bank erosion
- Limited fish cover
- Poor riparian buffer
- Wild brown trout population nearby

Partners: Pa. Fish & Boat Commission, Wildlands Conservancy, US Fish & Wildlife Service, Trout Unlimited, Ducks Unlimited, NRCS, Delaware River Keeper Network, Berks & Lehigh Co. Conservation Districts, City of Allentown, Berks Conservancy

Work included fish habitat/stablization structures.....



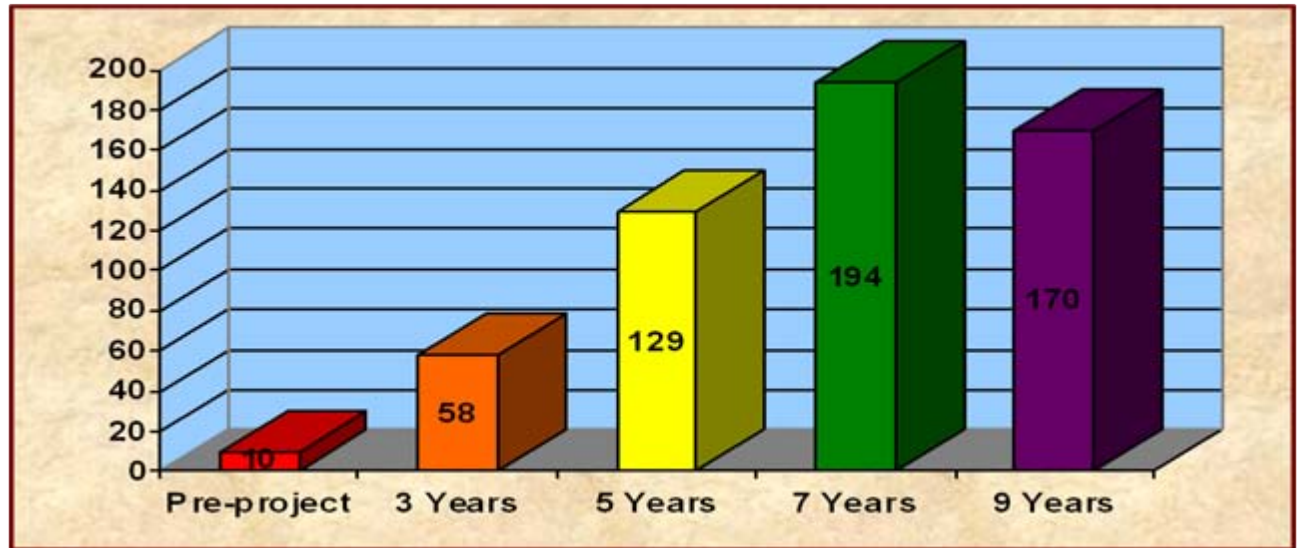
.....livestock fencing & stable crossings.....and buffer plantings.

A pre-project fish survey and physical habitat assessment was completed, with post-project monitoring done in 2005, 2007 and 2009.



Total Wild Brown Trout

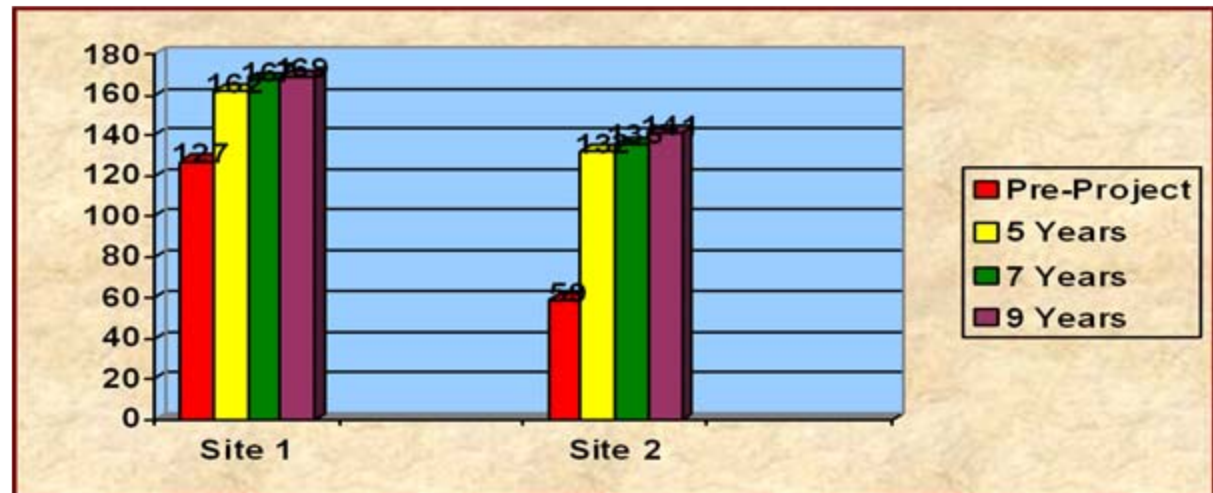
(Sites 1 and 2 Combined)



•Wild brown trout numbers showed a steady increase until leveling out after 7 years.

Total Habitat Assessment Score

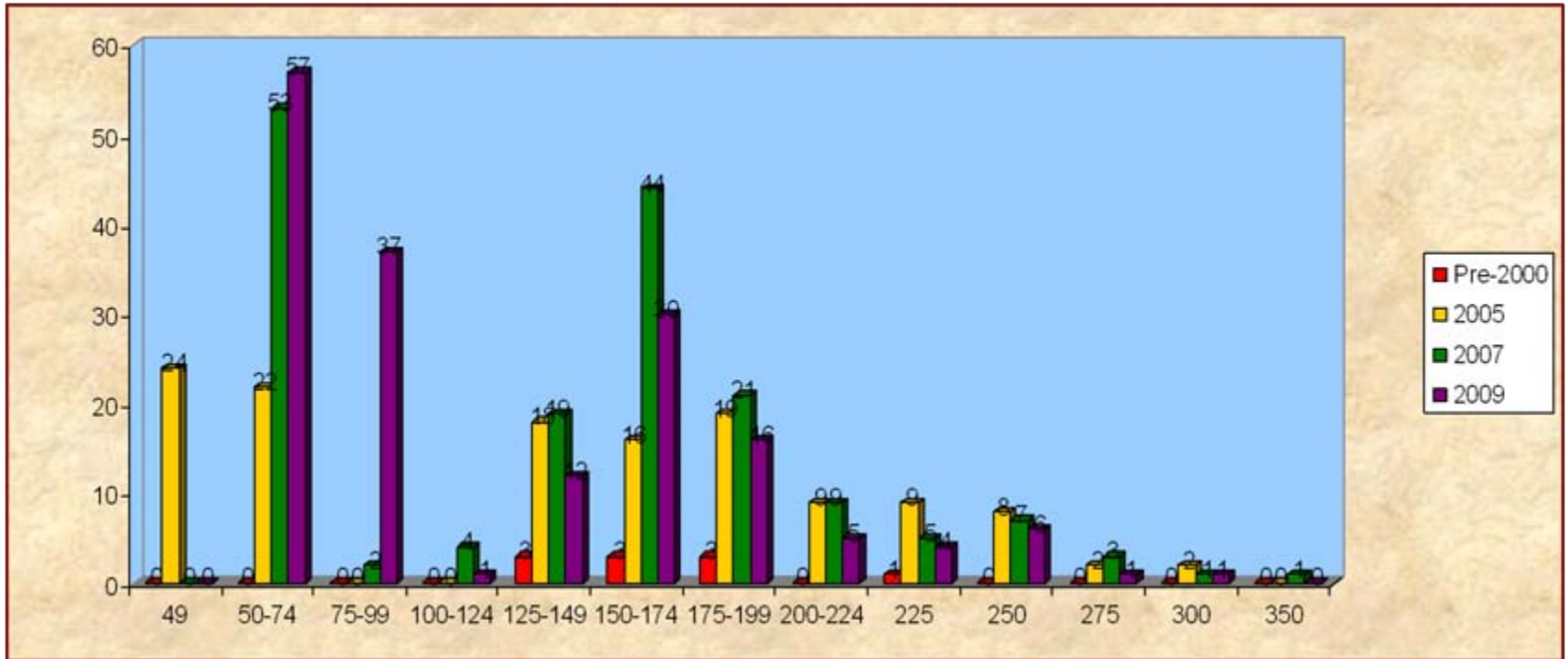
(Maximum Score =200)



•Physical habitat scores significantly increased after project completion.

Size Class Catch

Pre-Project vs. 5, 7 & 9-Year Survey



- Pre-project trout sizes ranged between 5 and 9 inches.
- Post-project trout sizes ranged from young-of-the-year to 14 inches.

2000 (Pre-project)



Site 1

2005



2007



2009



2000 (Pre-project)



Site 2

2005



2007



2009



Pre-Project

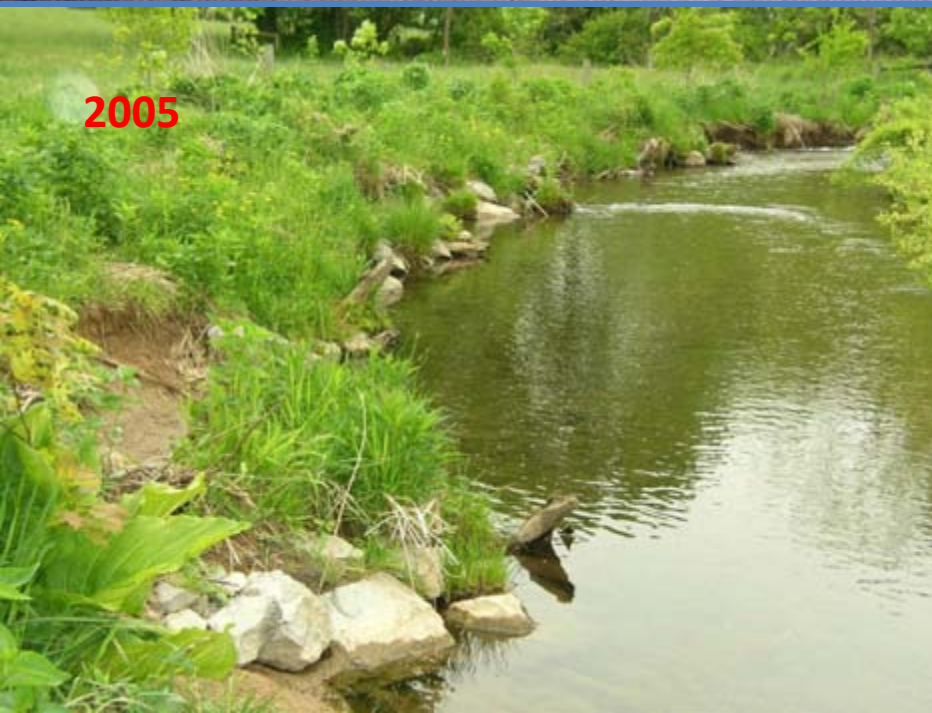


Eroded outside bend fixed with rootwad structures over nine years.

2000 (just after completion)



2005



2009





2000



2005

Stacked deflector structure over nine years.



2009

