

A New Spin on Fill-in-the-Blanks

September is Deaf Awareness Month, and September 23 is International Day of Sign Languages. Using the American Sign Language (ASL) alphabet in the box to the right, fill in the blanks to see if you can remember what you learned about spin fishing in this issue of *PLAY*.

1. An open-faced reel has a



_____.

2. A closed-faced reel has a



_____.

3. Spinning reels are mounted below the

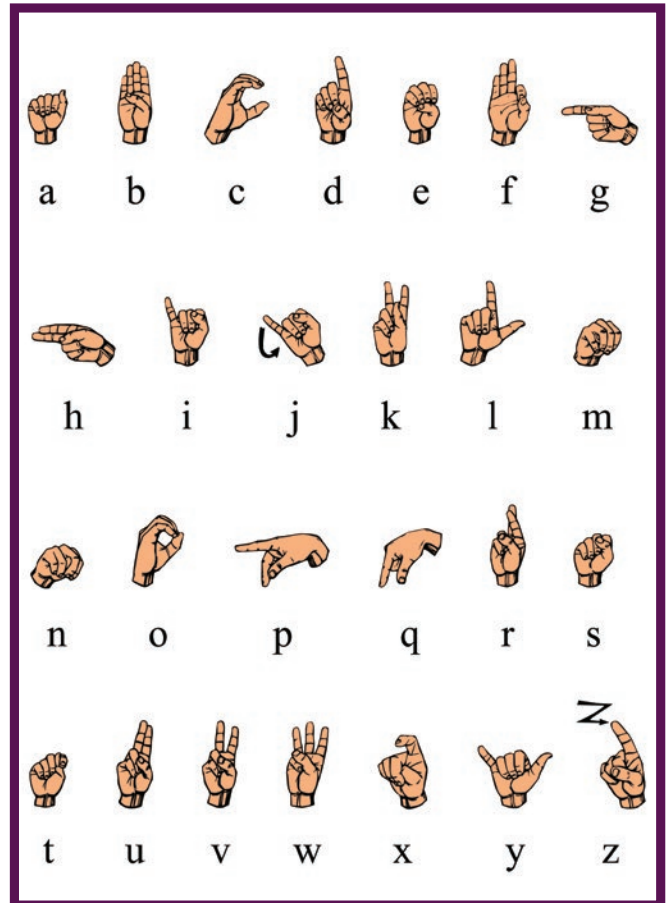


_____.

4. Many types of _____ work great to catch different fish.



ASL Alphabet



Answer Key: 1. wire ball; 2. spool cover; 3. rod; 4. lures



Produced by: the Bureau of Outreach, Education and Marketing
Written by: Dee Fisher
Editor: Spring Gearhart
Design and illustrations: Andrea Feeny
Photos: Dee Fisher, Ds13 at English Wikipedia, Public domain, via Wikimedia Commons, Janelle Howard, and PFBC archives
 © Pennsylvania Fish and Boat Commission