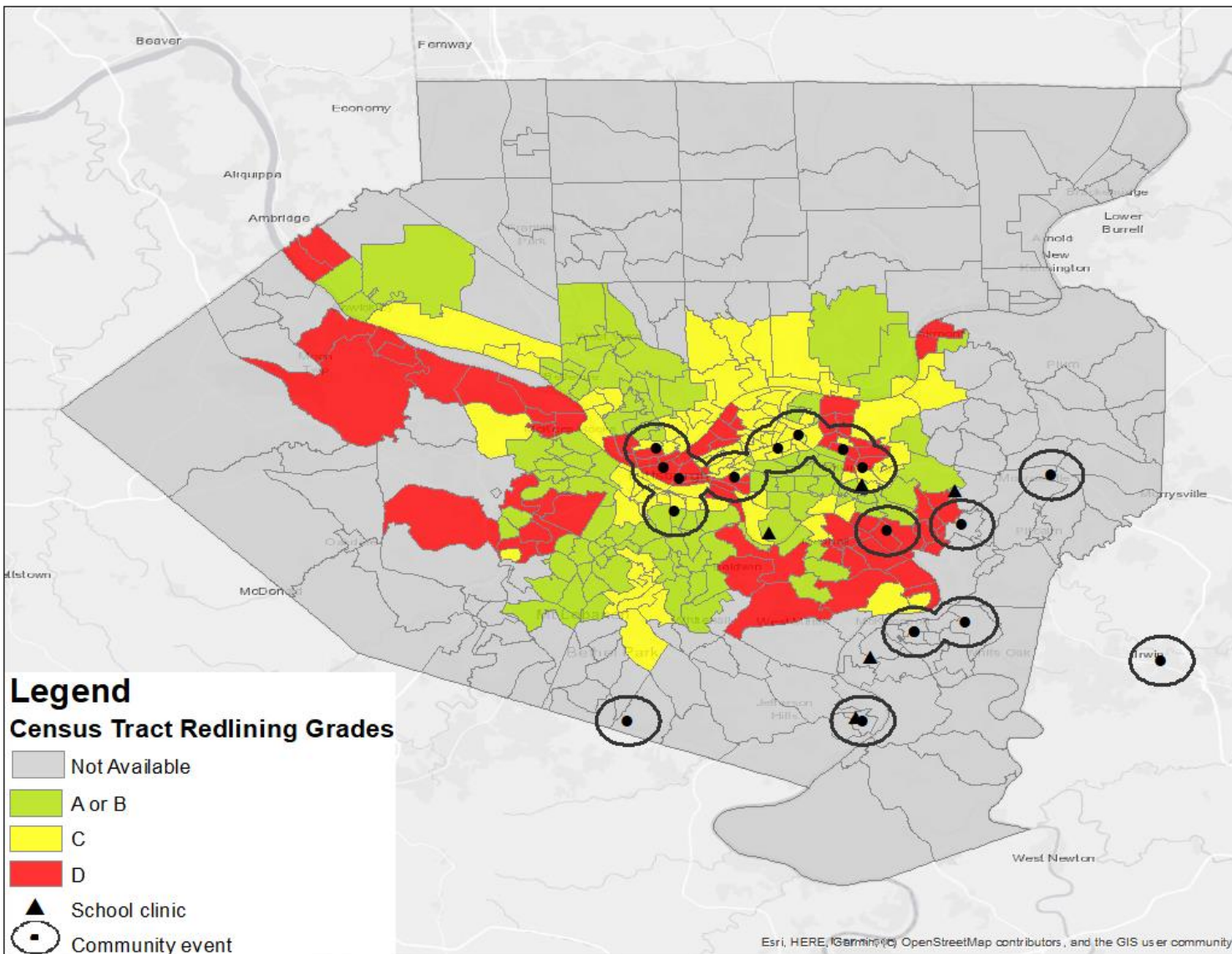


# How does the PA Asthma Control Program reach people with asthma in areas impacted by historical redlining

After the National Housing Act of 1934, U.S. neighborhoods with a higher concentration of Black families and families of color received unfavorable HOLC (Home Owner's Loan Corporation) designations. These neighborhoods were deemed a risk, or hazard, for lenders. The "hazardous" areas were often outlined in red, and this became known as "redlining." Subsequent policies favored neighborhoods with a majority white population, which led to fewer resources, substandard housing, and poor environmental conditions in historically redlined neighborhoods. These inequities persist today with environmental conditions exacerbating asthma and other health conditions. "For asthma in particular, it has been reported that emergency visits are 2.4 times higher for residents of areas that were more likely to be redlined" ([An Overview of Health Disparities in Asthma, Perez and Coutinho 2021](#)). To understand this historical context in the areas it serves and stimulate new questions about program recruitment efforts, the PA ACP mapped intervention locations with redlining data.

## Allegheny County

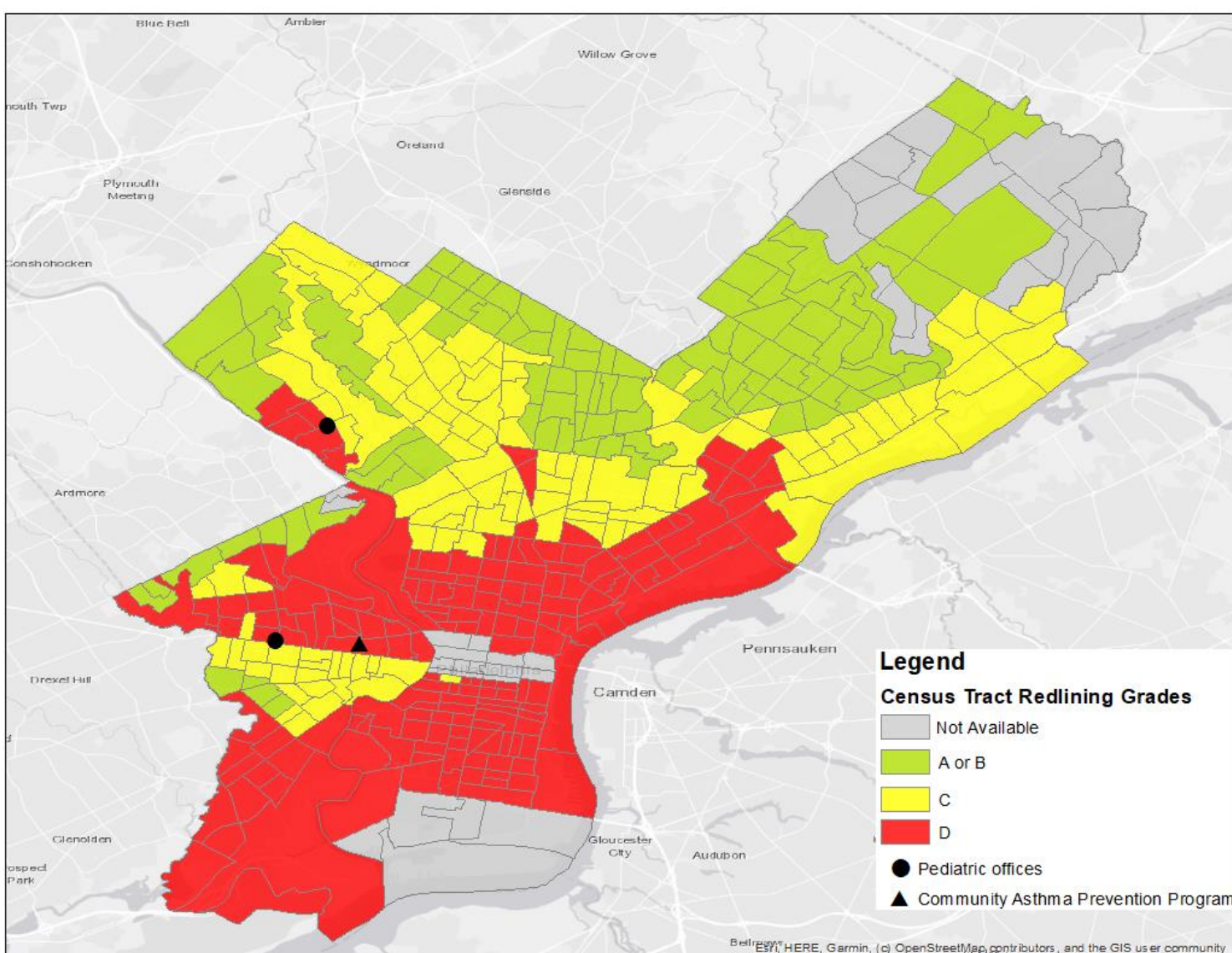


Intervention	Estimated Number with Access	
	Children	Adults
▲ School-based asthma clinic (DUCIH)	259	-
Community-based asthma clinic	259	-
Community-based tobacco program (DUCIH)	259	99,000
Asthma home visiting program (DUCIH)	259	-
Group ASME school program, Kickin' Asthma (ACHD/ALA)	N/A	N/A
Group ASME school program, Open Airways for Schools (ACHD/ALA)	N/A	N/A
● Healthy Homes Program (WHE)	22,200	99,000

### Reading the legends:

HOLC **grade C** and **grade D** indicate increasing levels of redlining, or racist and segregationist policies that have affected the socio-economic environments of neighborhoods. For more details, see: [Mapping Inequality](#).

## Philadelphia County



Intervention	Estimated Number of Children with Access
Asthma home visiting program (CHOP)	91
Teen Asthma Program (CHOP)	N/A
● Pediatric Practice #1 (QI)	401
● Pediatric Practice #2 (QI)	3918

