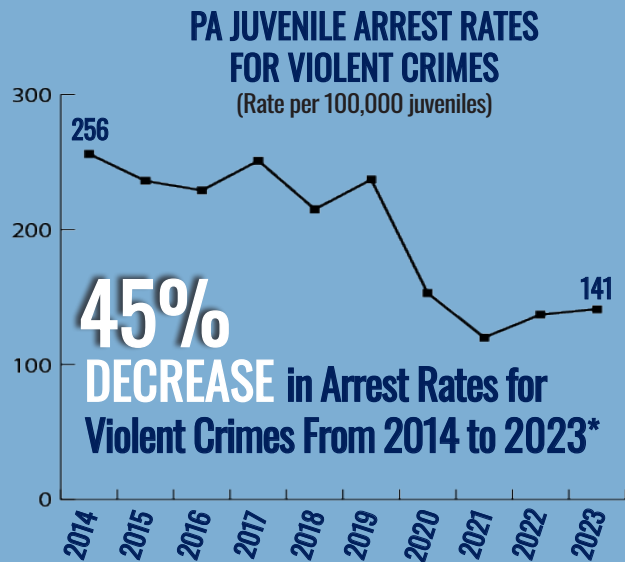


Revised: 08.2024

PENNSYLVANIA JUVENILE JUSTICE SYSTEM TRENDS 2014-2023

As Pennsylvania moves toward systematically integrating data-driven policies and practices, stakeholders must continuously track the performance and outcomes of such activities to ensure they are promoting positive outcomes for youth. These measures provide a clear picture of the impact of new initiatives on key justice measures, such as the arrest rate and placements.



\$102 Million



FEWER Dollars Spent on Delinquency Placements in FY 22-23 Than FY 13-14***

855,456



FEWER Days of Care in FY 22-23 Than FY 13-14**

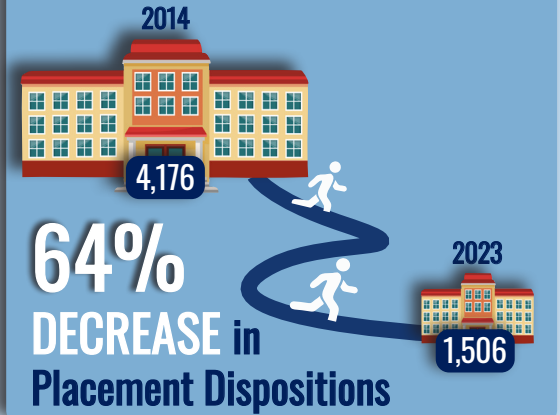
2014 ▶ 2023
27%

DECREASE in Delinquency Dispositions

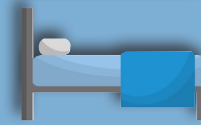
40%



DECREASE in Delinquency Disposition Rates per Juvenile Population 2014 ▶ 2023

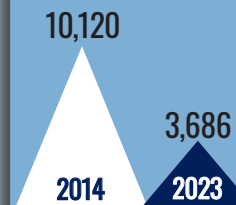


74%



DECREASE in Residential Placement Days of Care** 2014 ▶ 2023

64%



DECREASE in Secure Detention Admissions

*Data is from PA State Police Uniform Crime Reports and the United States Census Bureau.
**Data is from the PA Department of Human Services' Office of Children, Youth, and Families.