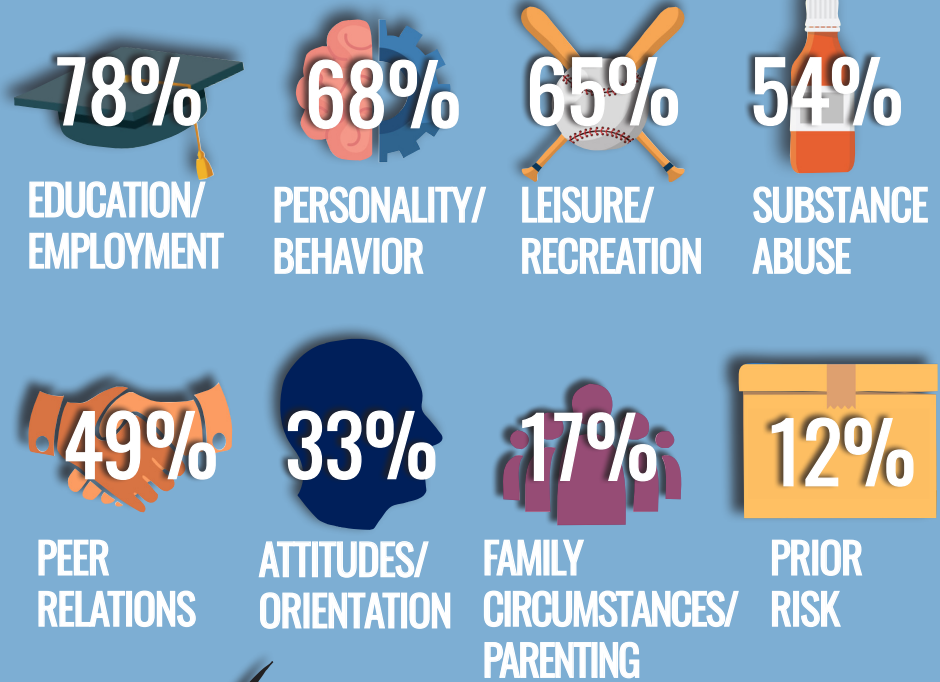


Revised: 08.2024

PENNSYLVANIA JUVENILE JUSTICE SYSTEM YOUTH LEVEL OF SERVICE

The use of the Youth Level of Service/Case Management Inventory™ (YLS) is the cornerstone of Pennsylvania’s Juvenile Justice System Enhancement Strategy. The tool, which is a validated research-based assessment, is designed to determine a juvenile’s risk to reoffend and the presence of criminogenic needs. The YLS measures 42 static and dynamic risk factors, divided into eight domains, that have been identified as most predictive of juvenile reoffending. The eight domains are: prior and current offenses/dispositions, family circumstances/parenting, education/employment, peer relations, substance abuse, leisure/recreation, personality/behavior, and attitudes/orientation. Generally, juveniles are assessed at the time they enter the juvenile justice system. Upon completion of the YLS assessment, juveniles are assigned a numeric score and risk level (i.e., low, moderate, high, or very high) and their top criminogenic needs (those factors recognized as driving their delinquent behavior) are identified. These results assist juvenile probation officers in targeting a juvenile’s specific needs through treatment, interventions, and services.

TOP CRIMINOGENIC NEEDS* of Initial YLS Assessments in 2023



2.4%

2023 Statewide
OVERRIDE RATE

94%

Most Youth Entering the PA Juvenile
Justice System Are Assessed as Either

LOW or MODERATE

RISK TO REOFFEND on the YLS

MODERATE

84%

vs.

HIGH/VERY HIGH

86%

YOUTH

Had Lower Risk Scores at CLOSURE

*Based on Youth Scoring Moderate or High on the Domain.