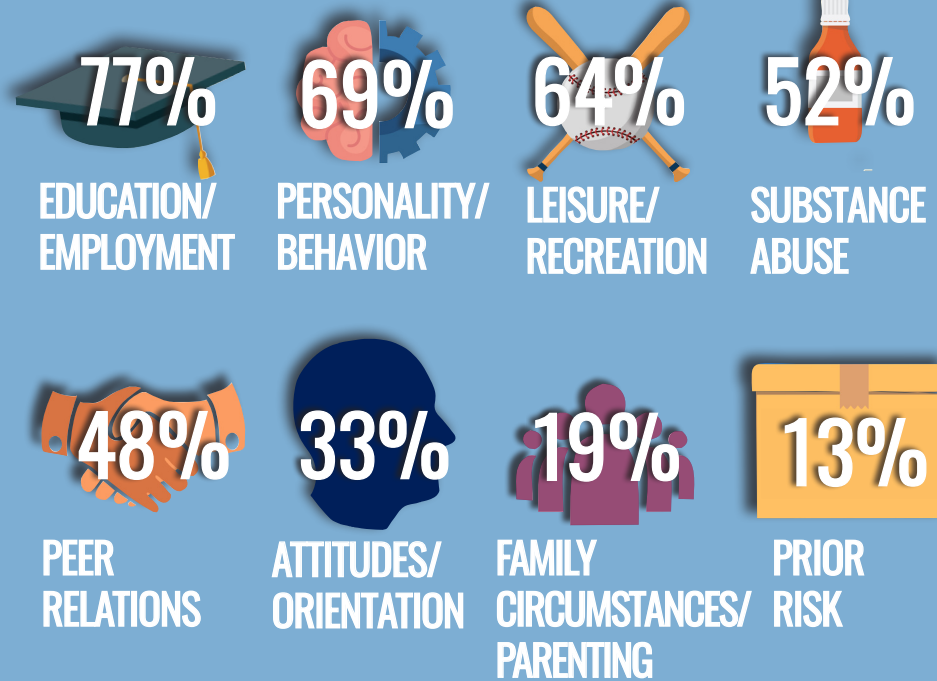


Revised: 08.2023

PENNSYLVANIA JUVENILE JUSTICE SYSTEM YOUTH LEVEL OF SERVICE

The use of the Youth Level of Service/Case Management Inventory™ (YLS) is the cornerstone of Pennsylvania's Juvenile Justice System Enhancement Strategy. The tool, which is a validated research-based assessment, is designed to determine a juvenile's risk to re-offend and the presence of criminogenic needs. The YLS measures 42 static and dynamic risk factors, divided into eight domains, that have been identified as most predictive of juvenile re-offending. The eight domains are: prior and current offenses/dispositions, family circumstances/parenting, education/employment, peer relations, substance abuse, leisure/recreation, personality/behavior, and attitudes/orientation. Generally, juveniles are assessed at the time they enter the juvenile justice system. Upon completion of the YLS assessment, juveniles are assigned a numeric score and risk level (i.e., low, moderate, high, or very high) and their top criminogenic needs (those factors recognized as driving their delinquent behavior) are identified. These results assist juvenile probation officers in targeting a juvenile's specific needs through treatment, interventions, and services.

TOP CRIMINOGENIC NEEDS* of Initial YLS Assessments in 2022



2.8%

2022 Statewide
OVERRIDE RATE

74%

YOUTH

Had **LOWER** Risk Scores at
JUVENILE CLOSURE in 2022

94%

Most Youth Entering the PA Juvenile
Justice System Are Assessed as Either

LOW or **MODERATE**

RISK TO RE-OFFEND on the YLS

*Based on Youth Scoring Moderate or High on the Domain.