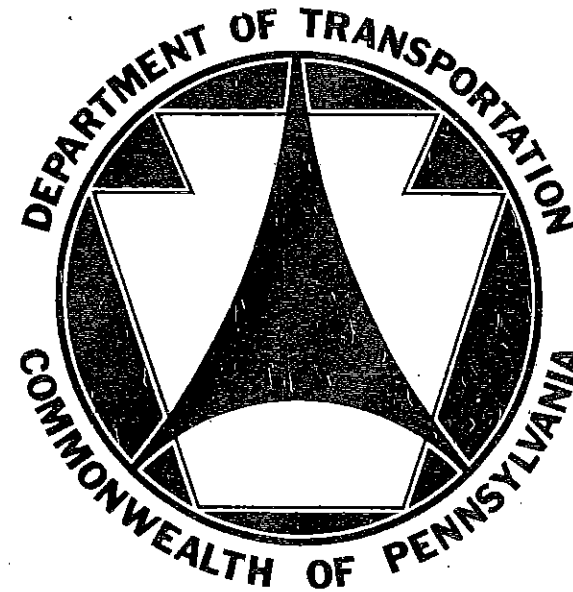


TC-7700 SERIES

TC-7710

**COMMONWEALTH OF PENNSYLVANIA
DEPARTMENT OF TRANSPORTATION**

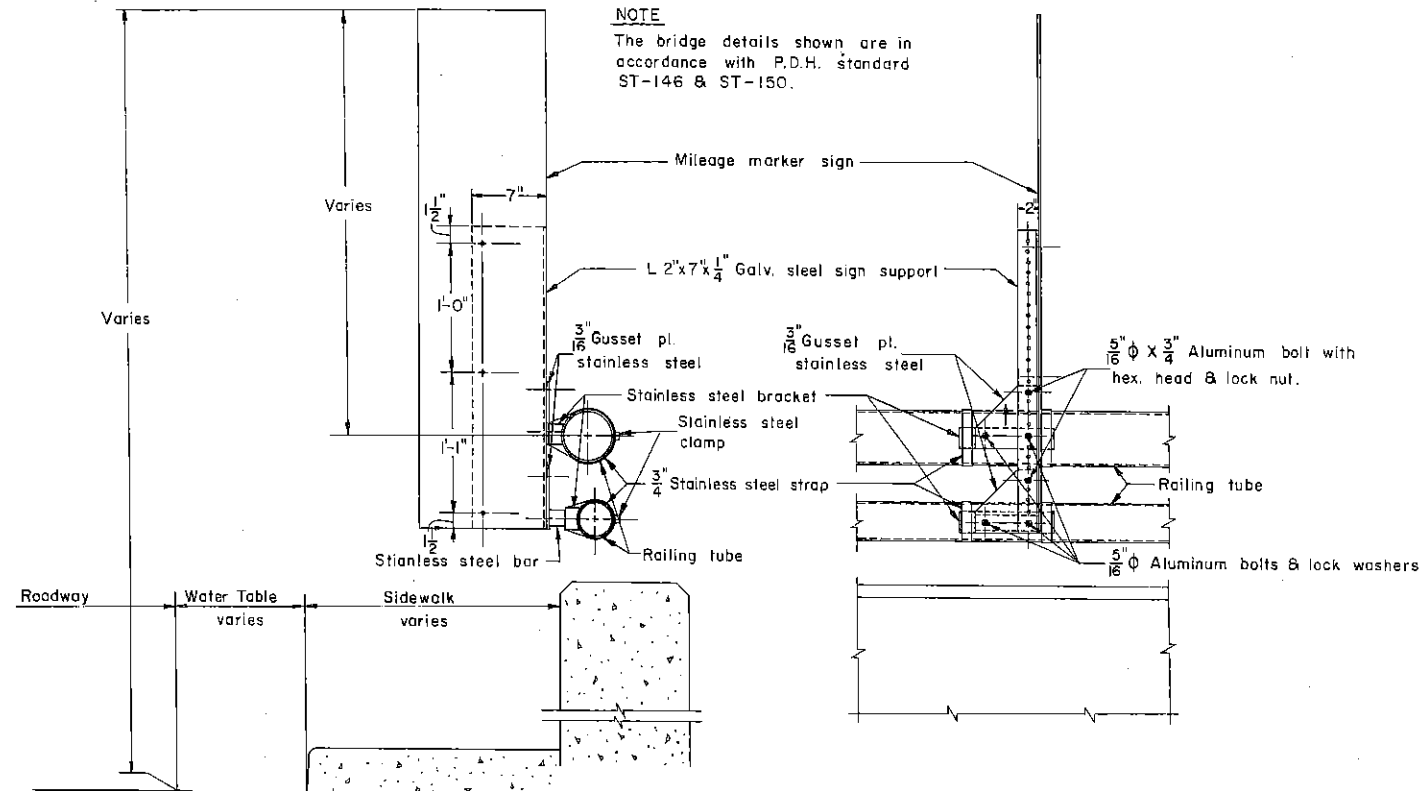


**TRAFFIC STANDARDS
SIGNING**

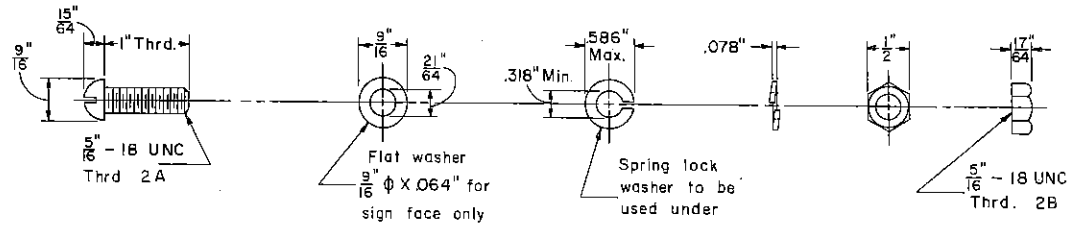
~~REVISION~~

7-3-73

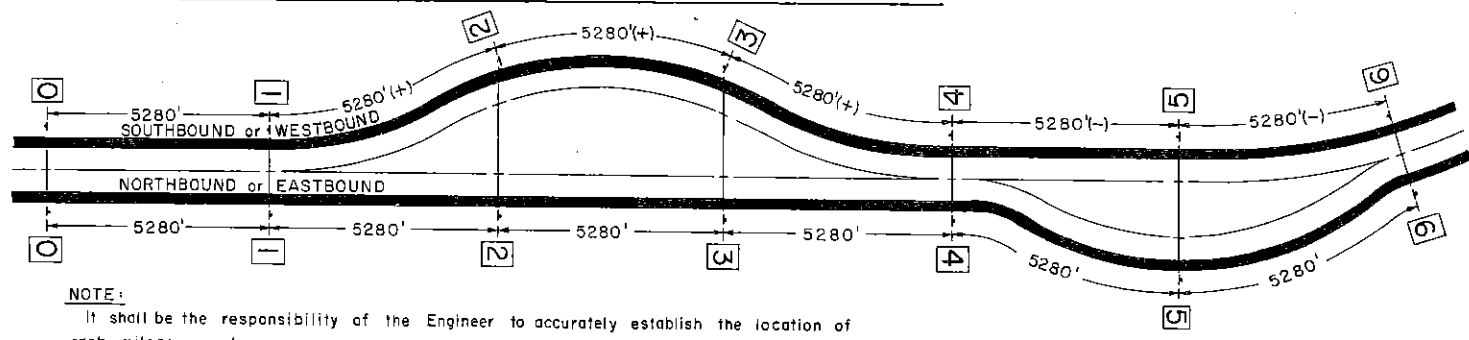
DISTRICT	COUNTY	ROUTE	SECTION	SHEET
REVISION NUMBER	REVISIONS		DATE	BY



ATTACHMENT OF MILEAGE MARKER ASSEMBLY TO ROADWAY SIDE OF DOUBLE TUBE RAILING

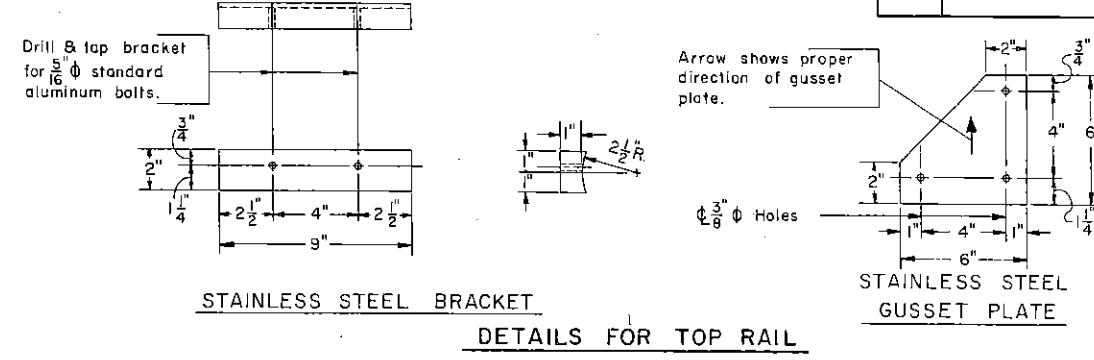


5/16" Ø BUTTON HEAD BOLT CONNECTING SIGN TO ANGLE

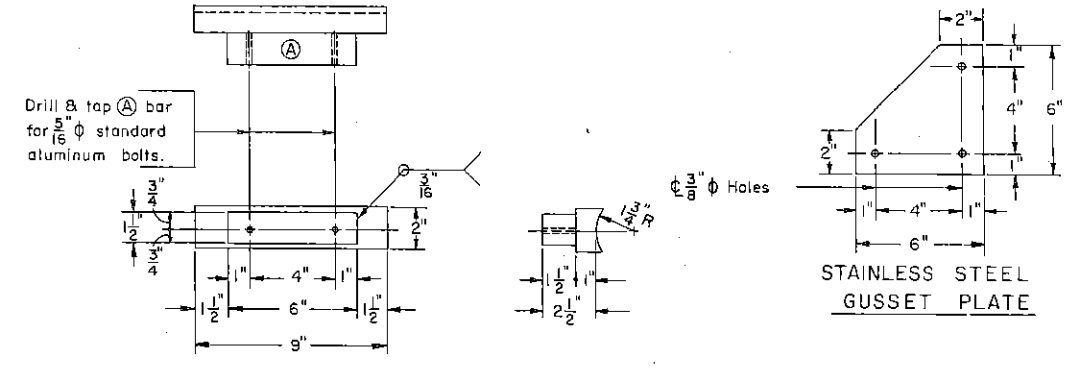


NOTE:
 It shall be the responsibility of the Engineer to accurately establish the location of each mileage marker.
 Measurements to accurately establish the location of mileage markers in increments of one mile (5,280 feet) will be taken along the outside edge of the pavement of northbound or eastbound roadways only. Mile markers on the southbound or westbound roadways shall be erected opposite to the mileage marker locations established on the northbound or eastbound roadways.

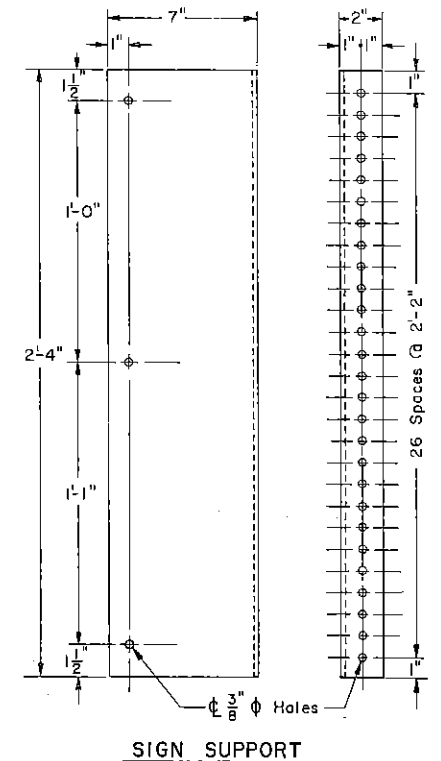
TYPICAL LOCATION OF MILEAGE MARKERS



STAINLESS STEEL BRACKET DETAILS FOR TOP RAIL



STAINLESS STEEL BRACKET & BAR DETAILS FOR BOTTOM RAIL



SIGN SUPPORT

- NOTE**
- All material shall be aluminum alloy, unless otherwise noted, and shall conform to the appropriate ASTM Designation and Temper as specified in P.D.T. Form 40B.
 - All stainless steel straps, clamps, bar, brackets and gusset plate shall conform to ASTM Designation A167-70.
 - All materials and workmanship shall be in accordance with the appropriate specification in Penn.D.O.T. Form 408^{and/or} 409.

REVISIONS

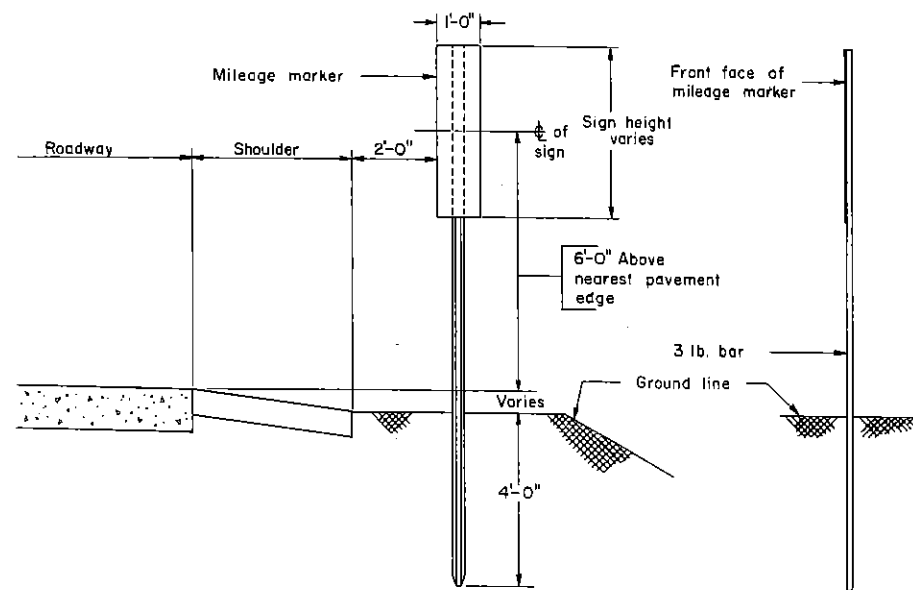
Commonwealth of Pennsylvania
 DEPARTMENT OF TRANSPORTATION
 BUREAU OF TRAFFIC ENGINEERING

**ERECTION DETAILS OF
 MILEAGE MARKERS TO
 ALUMINUM BRIDGE RAILING**

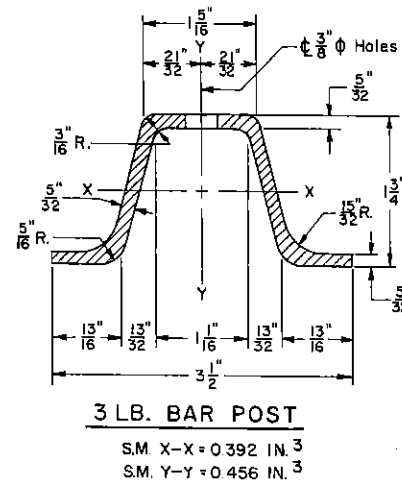
Recommended _____ Director, Bureau of Traffic Engineering	Approved _____ Deputy Chief Highway Engineer	Sht. 1 of 2 TC 7710
--	---	------------------------

DRAWN BY
 CHECKED BY
 FINAL BY

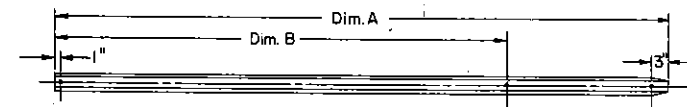
DISTRICT	COUNTY	ROUTE	SECTION	SHEET
REVISION NUMBER	REVISIONS	DATE	BY	



ELEVATION VIEW
DRIVEN POST DETAIL
END VIEW

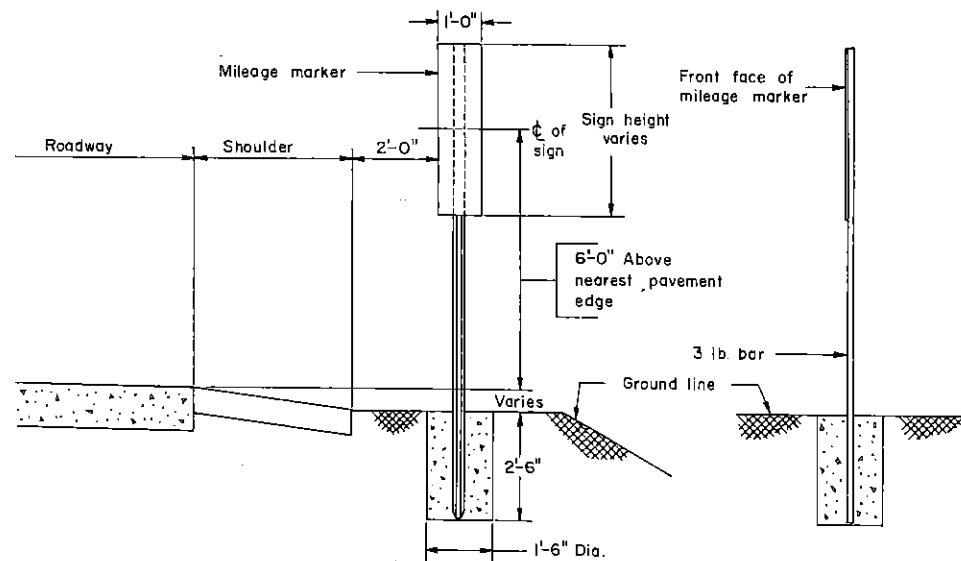


3 LB. BAR POST
S.M. X-X = 0 392 IN. ³/₃₂
S.M. Y-Y = 0 456 IN. ³/₃₂

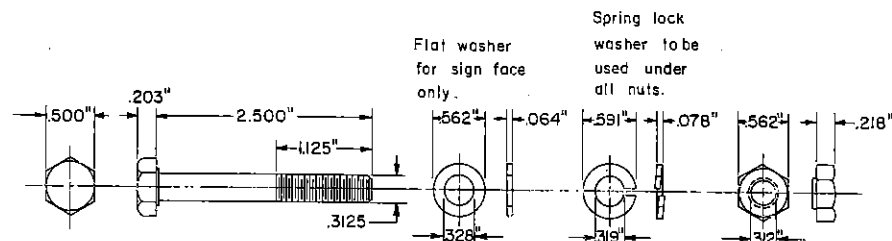


3 LB. BAR POST SECTIONS AND DETAILS

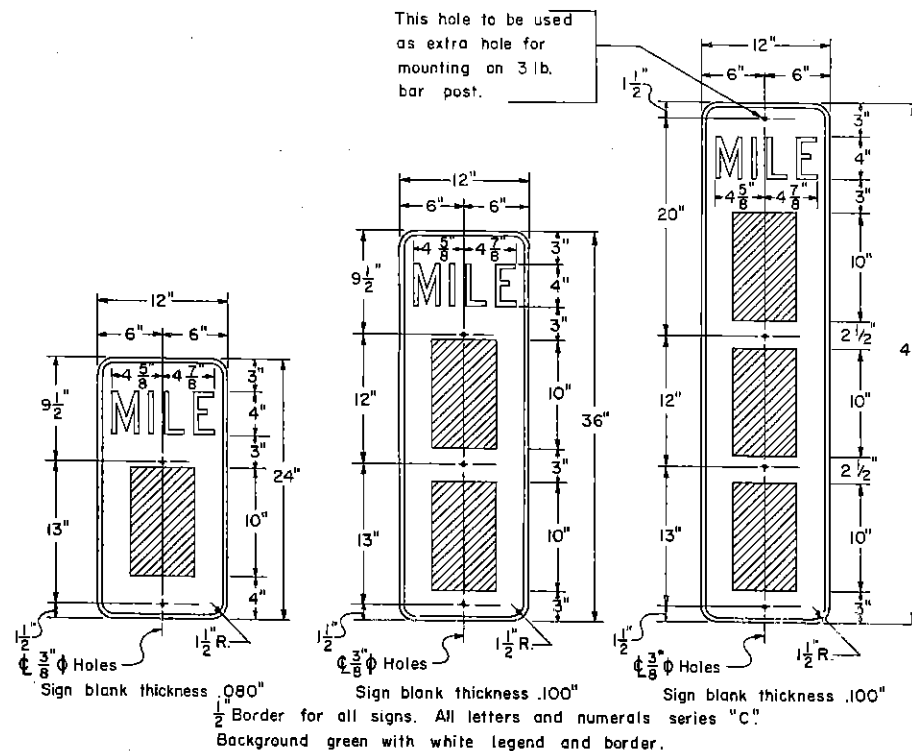
WEIGHT	LENGTH DIM. A	HOLES DIM. B
3 #	9'-6"	7'-0" (84 holes)
3 #	10'-0"	7'-6" (90 holes)
3 #	10'-6"	8'-0" (96 holes)
3 #	11'-0"	8'-6" (102 holes)
3 #	11'-6"	9'-0" (108 holes)
3 #	12'-0"	9'-6" (114 holes)
3 #	12'-6"	10'-0" (120 holes)
3 #	13'-0"	10'-6" (126 holes)
3 #	13'-6"	11'-0" (132 holes)



ELEVATION VIEW
AUGERED POST DETAIL
END VIEW



ALUMINUM BOLT (SIGN TO POST)



MILEAGE MARKER SIGNS

- NOTE
- All material and workmanship shall be in accordance with the appropriate specification in Penn D.O.T. Form 408 and/or 409.
 - For spacing of mileage marker signs on roadway see I.

Commonwealth of Pennsylvania
DEPARTMENT OF TRANSPORTATION
BUREAU OF TRAFFIC ENGINEERING

POST MOUNTED
MILEAGE MARKER

Recommended	Approved	Sht. 2 of 2
Director, Bureau of Traffic Engineering	Deputy Chief Highway Engineer	TC 7710

REVISIONS	