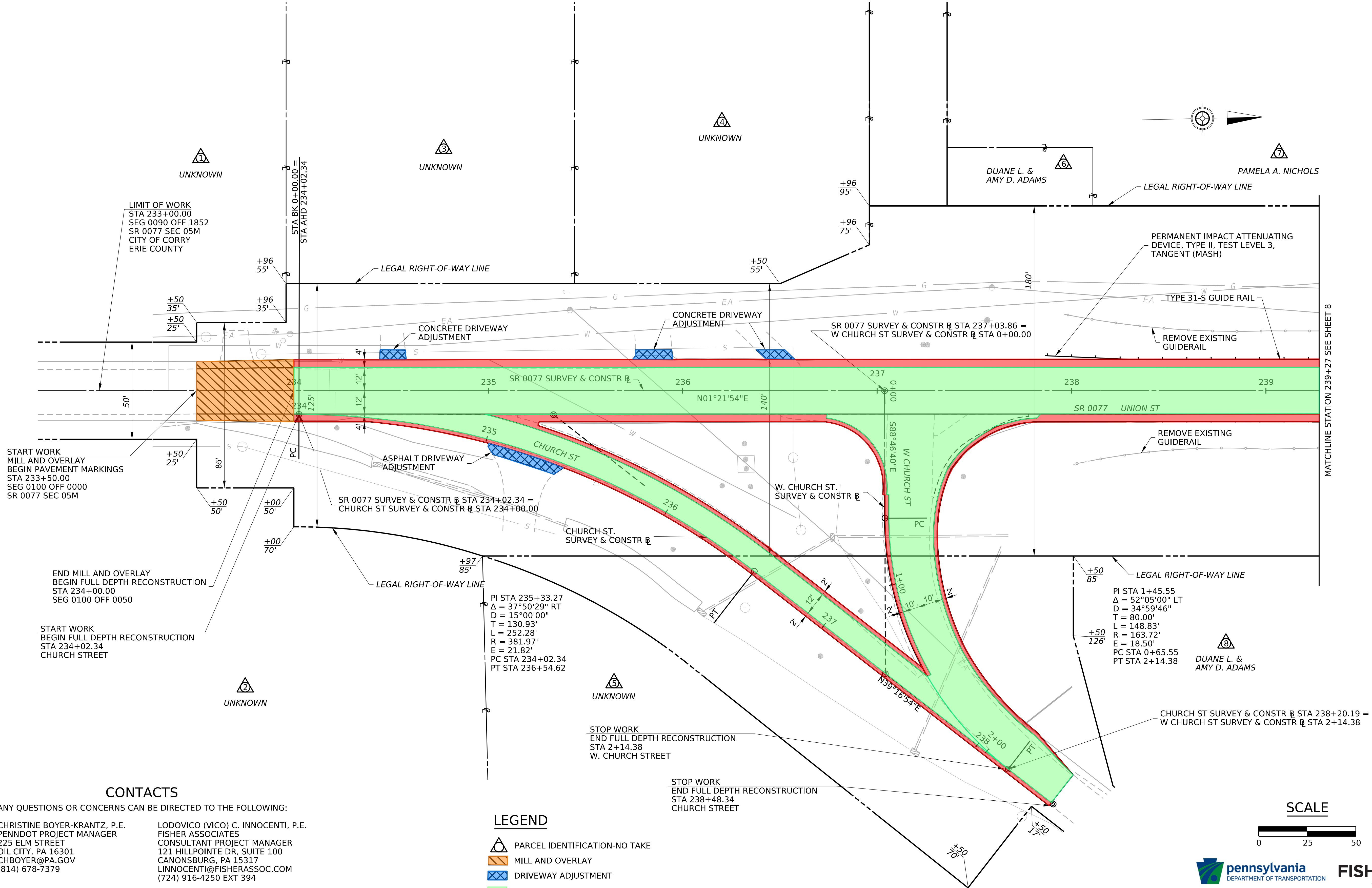


PRELIMINARY
STATE ROUTE 0077 SECTION 05M
CITY OF CORRY, ERIE COUNTY
FULL DEPTH RECONSTRUCTION PROJECT

PLOTTED: 18-NOV-2024 08:51

OPERATOR: jbaillly
FILE NAME: H:\Projects\221220651-03-E05514SR77\Common\Public Participation\SR 77 Public Plans Display.dgn



START WORK
MILL AND OVERLAY
BEGIN PAVEMENT MARKINGS
STA 233+50.00
SEG 0100 OFF 0000
SR 0077 SEC 05M

END MILL AND OVERLAY
BEGIN FULL DEPTH RECONSTRUCTION
STA 234+00.00
SEG 0100 OFF 0050

START WORK
BEGIN FULL DEPTH RECONSTRUCTION
STA 234+02.34
CHURCH STREET

STOP WORK
END FULL DEPTH RECONSTRUCTION
STA 2+14.38
W. CHURCH STREET

STOP WORK
END FULL DEPTH RECONSTRUCTION
STA 238+48.34
CHURCH STREET

CONTACTS

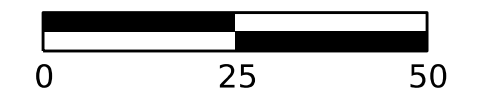
ANY QUESTIONS OR CONCERNS CAN BE DIRECTED TO THE FOLLOWING:

CHRISTINE BOYER-KRANTZ, P.E. PENNDOT PROJECT MANAGER 225 ELM STREET OIL CITY, PA 16301 CHBOYER@PA.GOV (814) 678-7379	LODOVICO (VICO) C. INNOCENTI, P.E. FISHER ASSOCIATES CONSULTANT PROJECT MANAGER 121 HILLPOINTE DR, SUITE 100 CANONSBURG, PA 15317 LINNOCENTI@FISHERASSOC.COM (724) 916-4250 EXT 394
---	---

LEGEND

- PARCEL IDENTIFICATION-NO TAKE
- MILL AND OVERLAY
- DRIVEWAY ADJUSTMENT
- FULL DEPTH RECONSTRUCTION ROADWAY
- FULL DEPTH RECONSTRUCTION SHOULDER

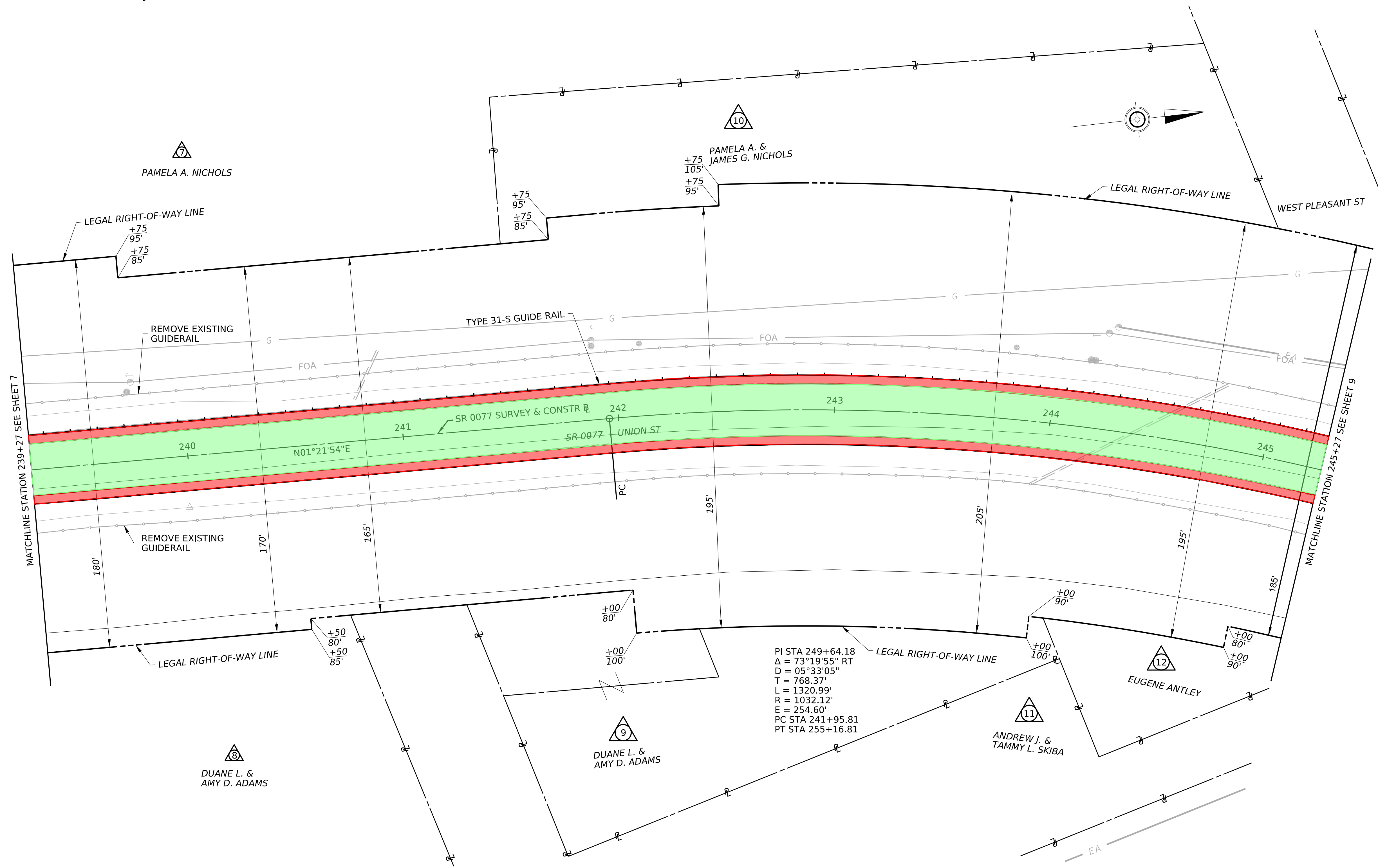
SCALE



MATCHLINE STATION 239+27 SEE SHEET 8

PLOTTED: 18-NOV-2024 08:43

PRELIMINARY
STATE ROUTE 0077 SECTION 05M
CITY OF CORRY, ERIE COUNTY
FULL DEPTH RECONSTRUCTION PROJECT



CONTACTS

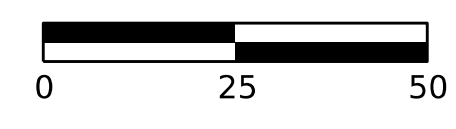
ANY QUESTIONS OR CONCERNS CAN BE DIRECTED TO THE FOLLOWING:

CHRISTINE BOYER-KRANTZ, P.E. PENNDOT PROJECT MANAGER 225 ELM STREET OIL CITY, PA 16301 CHBOYER@PA.GOV (814) 678-7379	LODOVICO (VICO) C. INNOCENTI, P.E. FISHER ASSOCIATES CONSULTANT PROJECT MANAGER 121 HILLPOINTE DR, SUITE 100 CANONSBURG, PA 15317 LINNOCENTI@FISHERASSOC.COM (724) 916-4250 EXT 394
---	---

LEGEND

- PARCEL IDENTIFICATION-NO TAKE
- MILL AND OVERLAY
- DRIVEWAY ADJUSTMENT
- FULL DEPTH RECONSTRUCTION ROADWAY
- FULL DEPTH RECONSTRUCTION SHOULDER

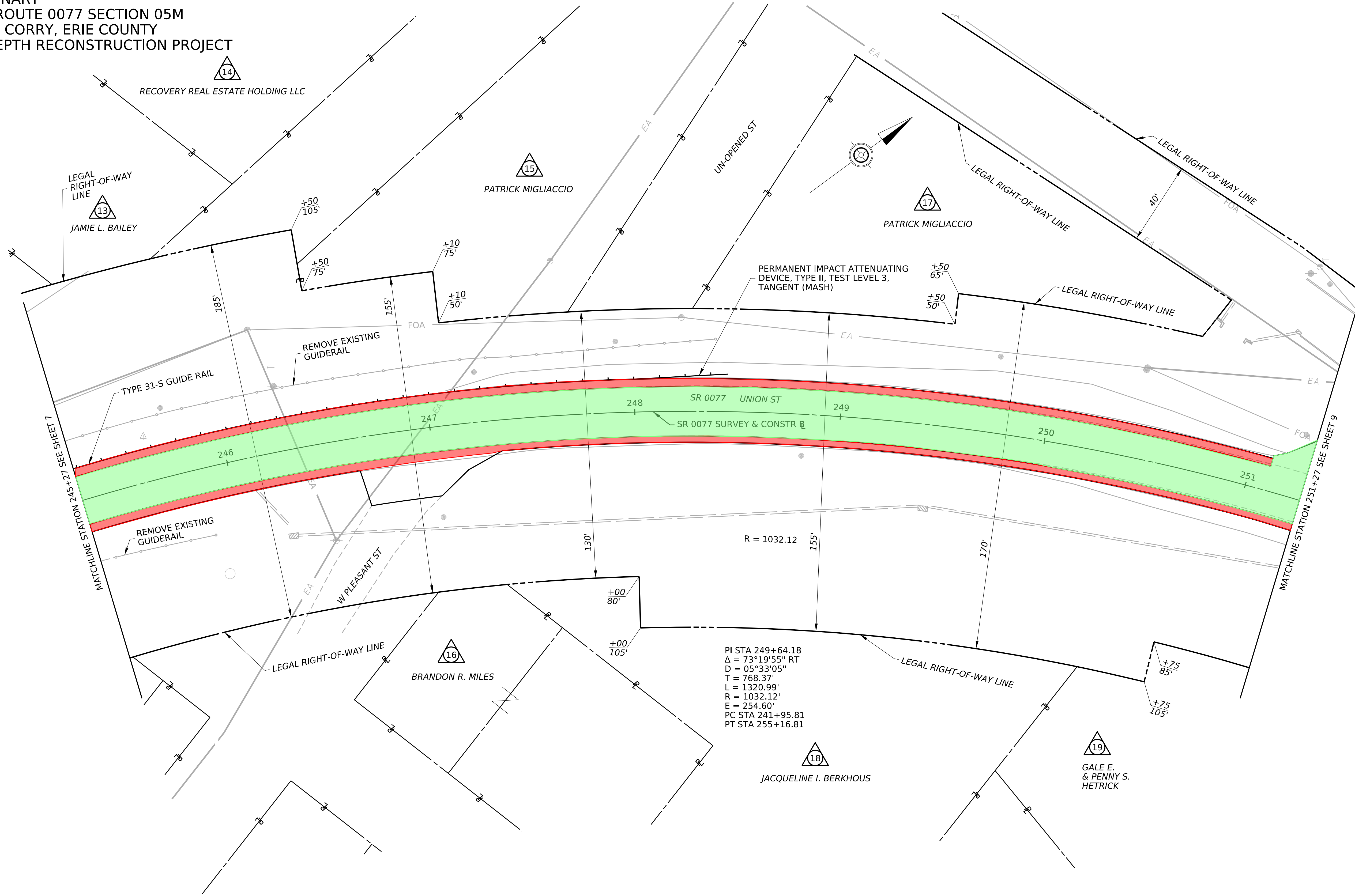
SCALE



OPERATOR: jbaillly
FILE NAME: H:\Projects\22\220651-03-E05514SR77\Common\Public Participation\SR 77 Public Plans Display.dgn

PLOTTED: 18-NOV-2024 08:43

PRELIMINARY
STATE ROUTE 0077 SECTION 05M
CITY OF CORRY, ERIE COUNTY
FULL DEPTH RECONSTRUCTION PROJECT



CONTACTS

ANY QUESTIONS OR CONCERNS CAN BE DIRECTED TO THE FOLLOWING:

CHRISTINE BOYER-KRANTZ, P.E.
PENNDOT PROJECT MANAGER
225 ELM STREET
OIL CITY, PA 16301
CHBOYER@PA.GOV
(814) 678-7379

LODOVICO (VICO) C. INNOCENTI, P.E.
FISHER ASSOCIATES
CONSULTANT PROJECT MANAGER
121 HILLPOINTE DR, SUITE 100
CANONSBURG, PA 15317
LINNOCENTI@FISHERASSOC.COM
(724) 916-4250 EXT 394

LEGEND

- PARCEL IDENTIFICATION-NO TAKE
- MILL AND OVERLAY
- DRIVEWAY ADJUSTMENT
- FULL DEPTH RECONSTRUCTION ROADWAY
- FULL DEPTH RECONSTRUCTION SHOULDER

SCALE

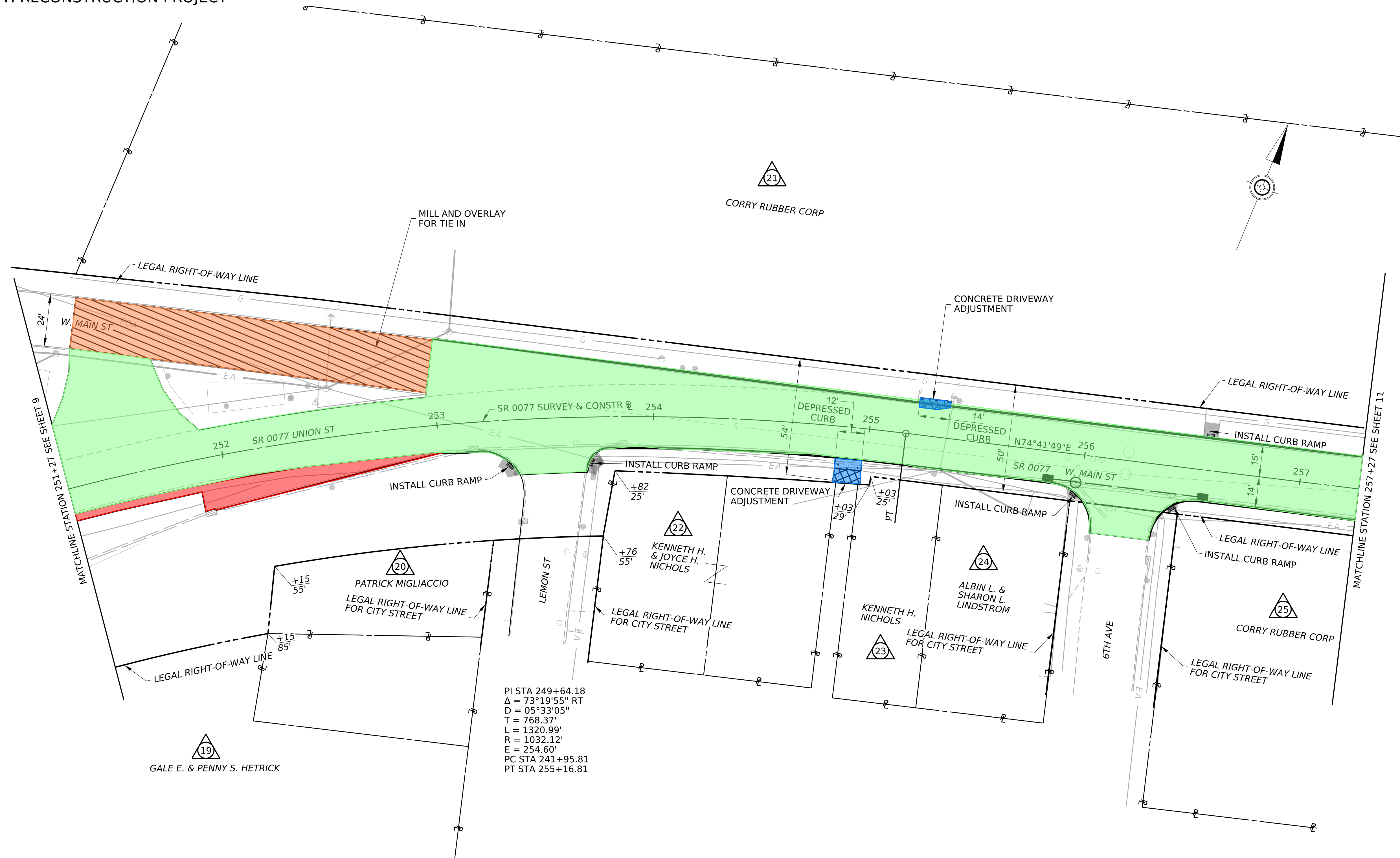


OPERATOR: jbaillly
FILE NAME: H:\Projects\22\220651-03-E05514SR77\Common\Public Participation\SR 77 Public Plans Display.dgn

PRELIMINARY
 STATE ROUTE 0077 SECTION 05M
 CITY OF CORRY, ERIE COUNTY
 FULL DEPTH RECONSTRUCTION PROJECT

PLOTTED: 18-NOV-2024 08:43

OPERATOR: jbaillly
 FILE NAME: H:\Projects\22\220651-03-E05514SR77\Common\Public Participation\SR 77 Public Plans Display.dgn




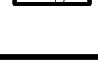




CONTACTS

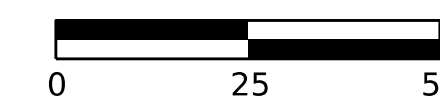
ANY QUESTIONS OR CONCERNS CAN BE DIRECTED TO THE FOLLOWING:

CHRISTINE BOYER-KRANTZ, P.E. PENNDOT PROJECT MANAGER 225 ELM STREET OIL CITY, PA 16301 CHBOYER@PA.GOV (814) 678-7379	LODOVICO (VICO) C. INNOCENTI, P.E. FISHER ASSOCIATES CONSULTANT PROJECT MANAGER 121 HILLPOINTE DR, SUITE 100 CANONSBURG, PA 15317 LINNOCENTI@FISHERASSOC.COM (724) 916-4250 EXT 394
---	---

LEGEND

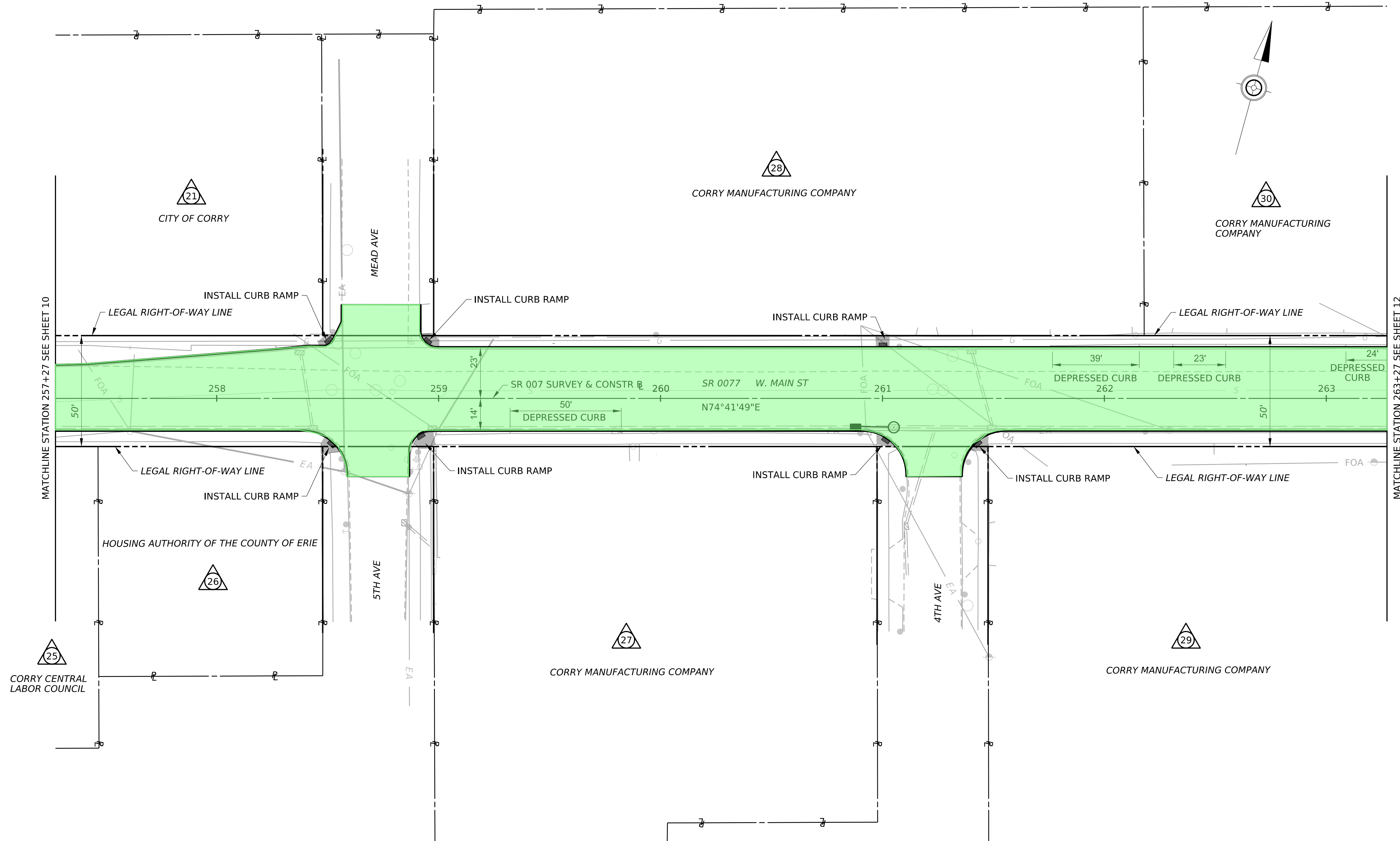
-  PARCEL IDENTIFICATION-NO TAKE
-  MILL AND OVERLAY
-  DRIVEWAY ADJUSTMENT
-  DRIVEWAY APRON
-  FULL DEPTH RECONSTRUCTION ROADWAY
-  FULL DEPTH RECONSTRUCTION SHOULDER

SCALE



PLOTTED: 18-NOV-2024 08:43

PRELIMINARY
STATE ROUTE 0077 SECTION 05M
CITY OF CORRY, ERIE COUNTY
FULL DEPTH RECONSTRUCTION PROJECT




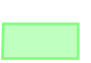


CONTACTS

ANY QUESTIONS OR CONCERNS CAN BE DIRECTED TO THE FOLLOWING:

CHRISTINE BOYER-KRANTZ, P.E. PENNDOT PROJECT MANAGER 225 ELM STREET OIL CITY, PA 16301 CHBOYER@PA.GOV (814) 678-7379	LODOVICO (VICO) C. INNOCENTI, P.E. FISHER ASSOCIATES CONSULTANT PROJECT MANAGER 121 HILLPOINTE DR, SUITE 100 CANONSBURG, PA 15317 LINNOCENTI@FISHERASSOC.COM (724) 916-4250 EXT 394
---	---

LEGEND

-  PARCEL IDENTIFICATION-NO TAKE
-  MILL AND OVERLAY
-  DRIVEWAY ADJUSTMENT
-  FULL DEPTH RECONSTRUCTION ROADWAY

SCALE

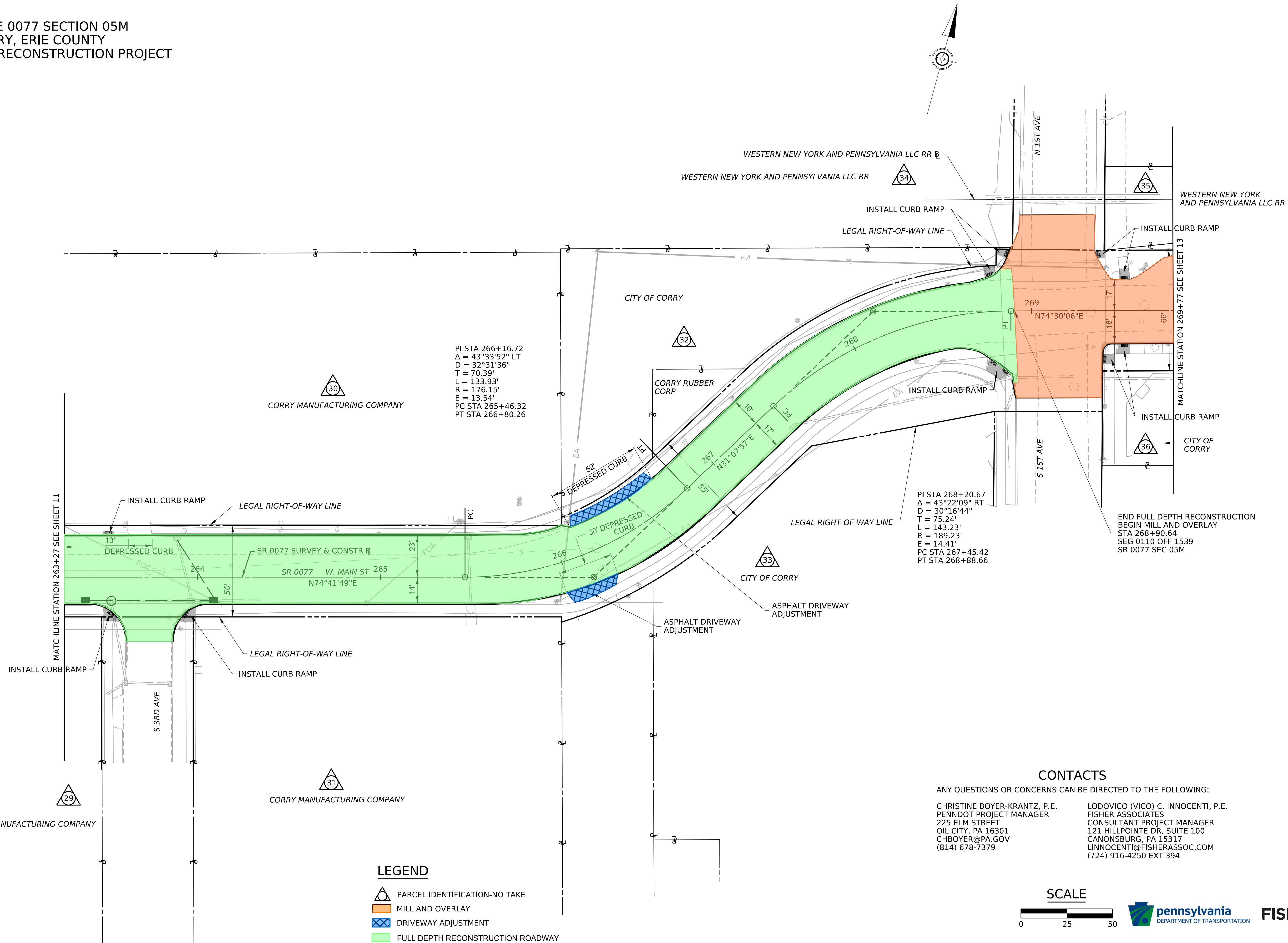


OPERATOR: jbaillly
FILE NAME: H:\Projects\22\220651-03-E05514SR77\Common\Public Participation\SR 77 Public Plans Display.dgn

PRELIMINARY
 STATE ROUTE 0077 SECTION 05M
 CITY OF CORRY, ERIE COUNTY
 FULL DEPTH RECONSTRUCTION PROJECT

PLOTTED: 18-NOV-2024 08:43

OPERATOR: jbaillly
 FILE NAME: H:\Projects\22\220651-03-E05514SR77\Common\Public Participation\SR 77 Public Plans Display.dgn



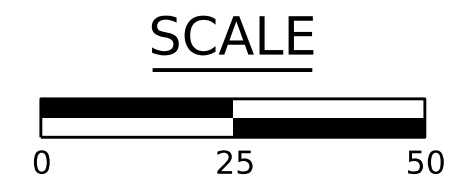
LEGEND

	PARCEL IDENTIFICATION-NO TAKE
	MILL AND OVERLAY
	DRIVEWAY ADJUSTMENT
	FULL DEPTH RECONSTRUCTION ROADWAY

CONTACTS

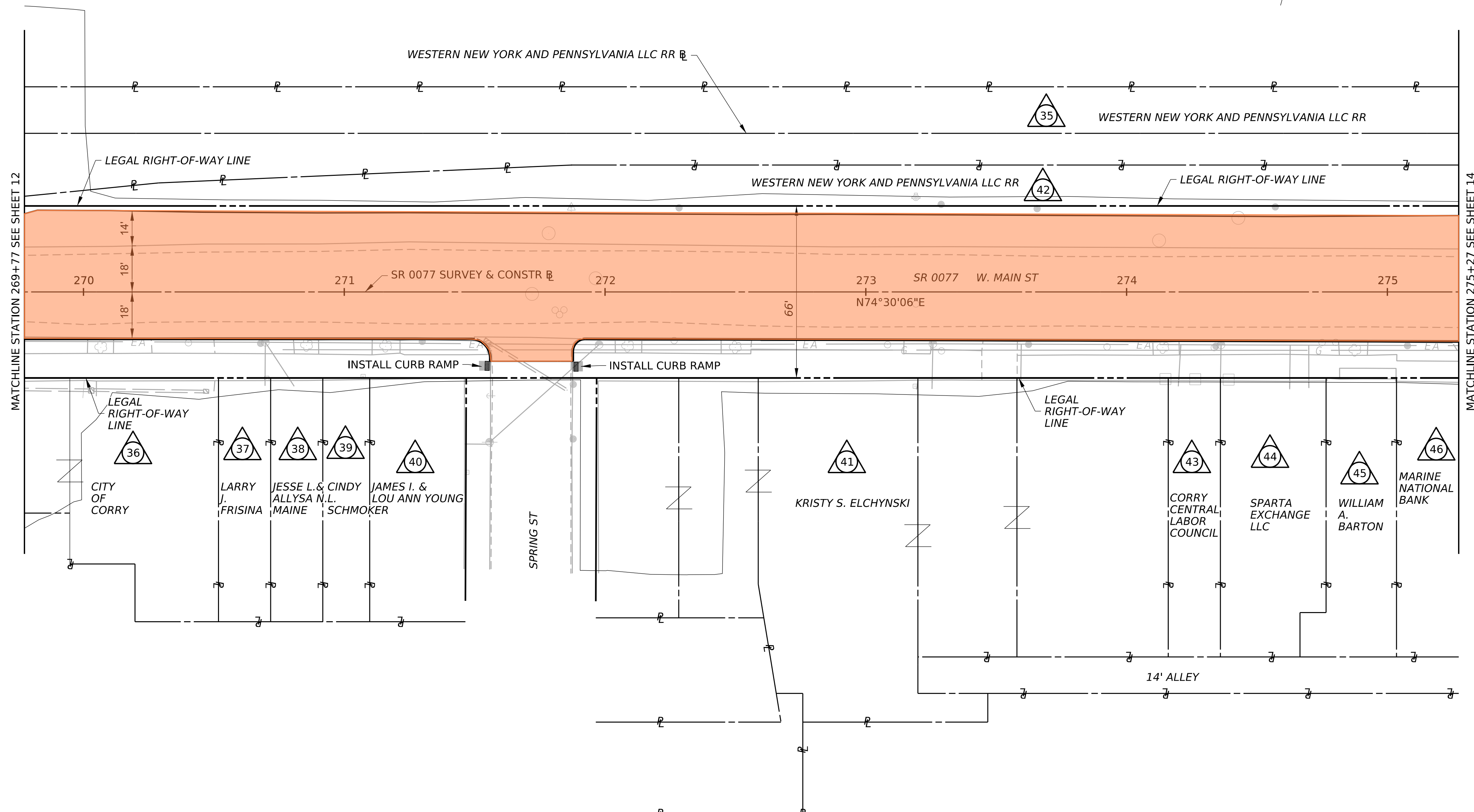
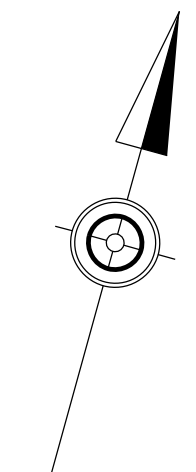
ANY QUESTIONS OR CONCERNS CAN BE DIRECTED TO THE FOLLOWING:

CHRISTINE BOYER-KRANTZ, P.E. PENNDOT PROJECT MANAGER 225 ELM STREET OIL CITY, PA 16301 CHBOYER@PA.GOV (814) 678-7379	LODOVICO (VICO) C. INNOCENTI, P.E. FISHER ASSOCIATES CONSULTANT PROJECT MANAGER 121 HILLPOINTE DR, SUITE 100 CANONSBURG, PA 15317 LINNOCENTI@FISHERASSOC.COM (724) 916-4250 EXT 394
---	---



PLOTTED: 18-NOV-2024 08:43

PRELIMINARY
STATE ROUTE 0077 SECTION 05M
CITY OF CORRY, ERIE COUNTY
FULL DEPTH RECONSTRUCTION PROJECT






CONTACTS

ANY QUESTIONS OR CONCERNS CAN BE DIRECTED TO THE FOLLOWING:

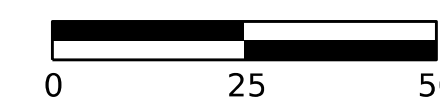
CHRISTINE BOYER-KRANTZ, P.E.
PENNDOT PROJECT MANAGER
225 ELM STREET
OIL CITY, PA 16301
CHBOYER@PA.GOV
(814) 678-7379

LODOVICO (VICO) C. INNOCENTI, P.E.
FISHER ASSOCIATES
CONSULTANT PROJECT MANAGER
121 HILLPOINTE DR, SUITE 100
CANONSBURG, PA 15317
LINNOCENTI@FISHERASSOC.COM
(724) 916-4250 EXT 394

LEGEND

-  PARCEL IDENTIFICATION-NO TAKE
-  MILL AND OVERLAY
-  DRIVEWAY ADJUSTMENT

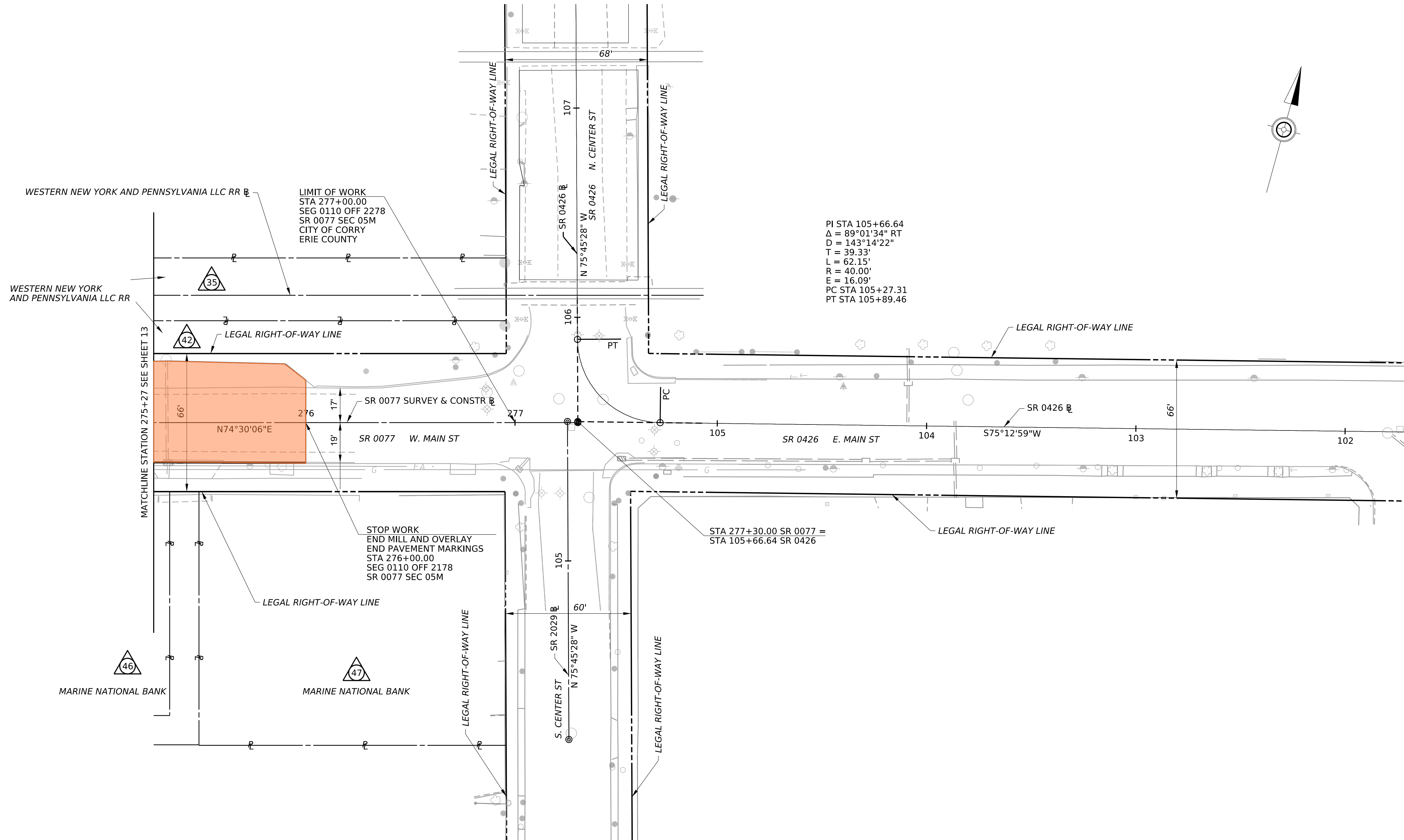
SCALE



OPERATOR: jbaillly
FILE NAME: H:\Projects\22\220651-03-E05514SR77\Common\Public Participation\SR 77 Public Plans Display.dgn

PRELIMINARY
 STATE ROUTE 0077 SECTION 05M
 CITY OF CORRY, ERIE COUNTY
 FULL DEPTH RECONSTRUCTION PROJECT

PLOTTED: 18-NOV-2024 08:43






CONTACTS

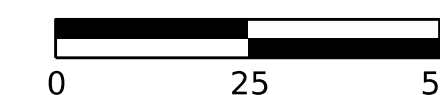
ANY QUESTIONS OR CONCERNS CAN BE DIRECTED TO THE FOLLOWING:

<p>CHRISTINE BOYER-KRANTZ, P.E. PENNDOT PROJECT MANAGER 225 ELM STREET OIL CITY, PA 16301 CHBOYER@PA.GOV (814) 678-7379</p>	<p>LODOVICO (VICO) C. INNOCENTI, P.E. FISHER ASSOCIATES CONSULTANT PROJECT MANAGER 121 HILLPOINTE DR, SUITE 100 CANONSBURG, PA 15317 LINNOCENTI@FISHERASSOC.COM (724) 916-4250 EXT 394</p>
--	--

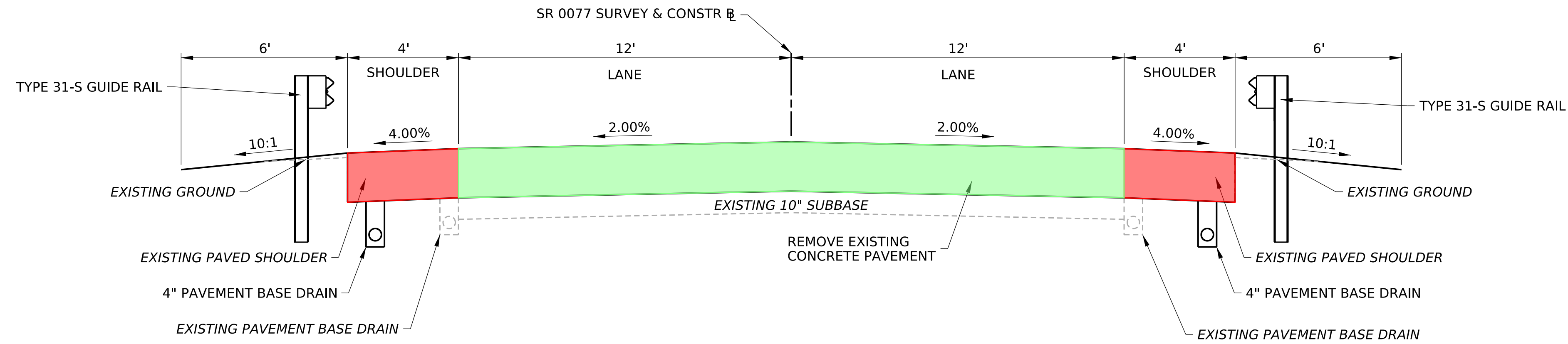
LEGEND

-  PARCEL IDENTIFICATION-NO TAKE
-  MILL AND OVERLAY
-  DRIVEWAY ADJUSTMENT

SCALE

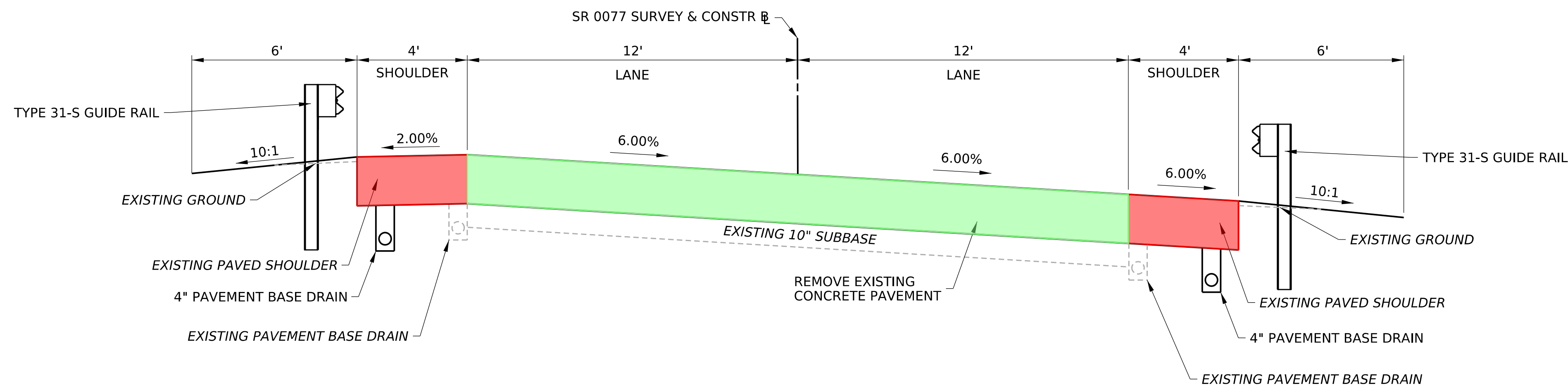


OPERATOR: jbaillly
 FILE NAME: H:\Projects\22\220651-03-E05514SR77\Common\Public Participation\SR 77 Public Plans Display.dgn



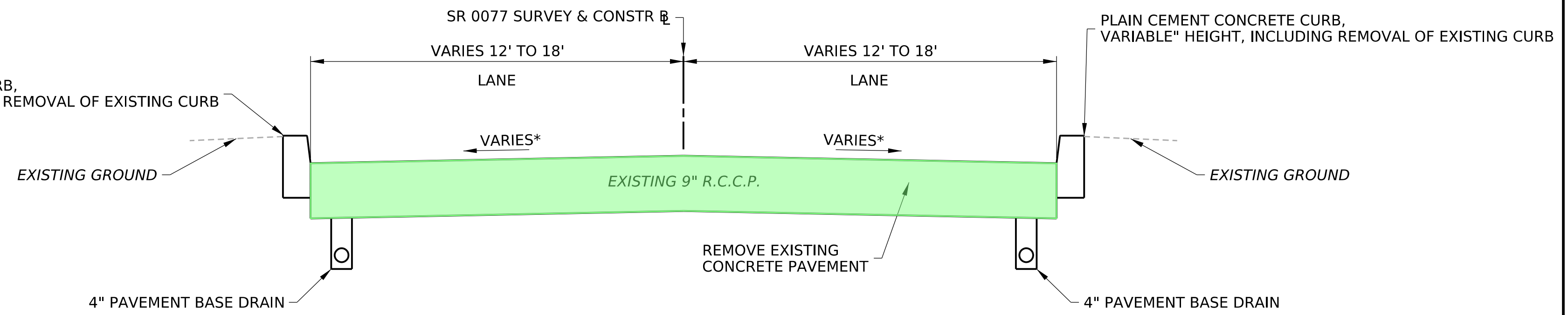
TYPICAL TANGENT SECTION

STA 234+00.00 TO STA 241+95.81



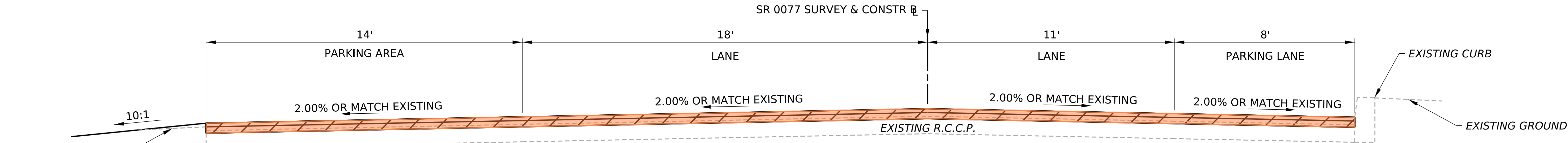
TYPICAL SUPERELEVATION SECTION

STA 241+95.81 TO STA 255+16.81



TYPICAL CURB SECTION

STA 255+16.81 TO STA 268+90.62

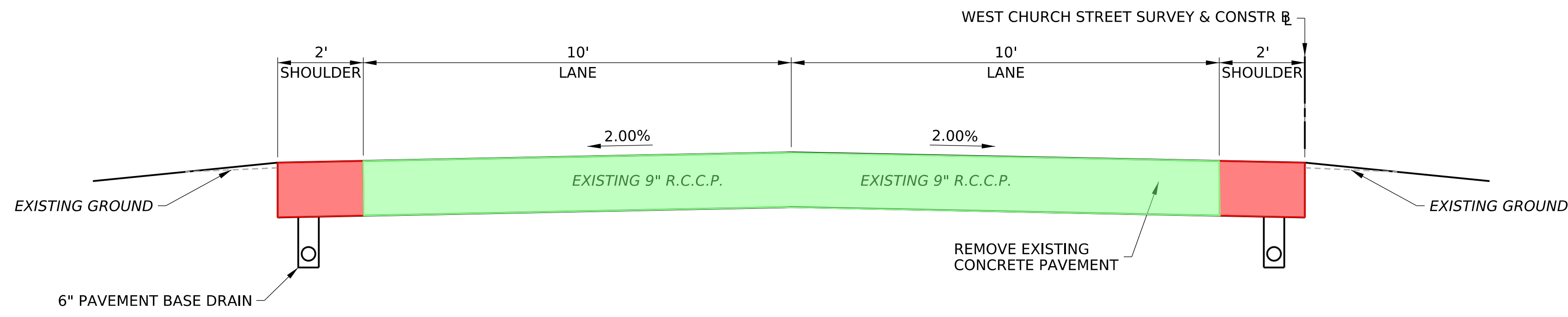


TYPICAL PARKING SECTION

STA 268+90.62 TO STA 276+00.00

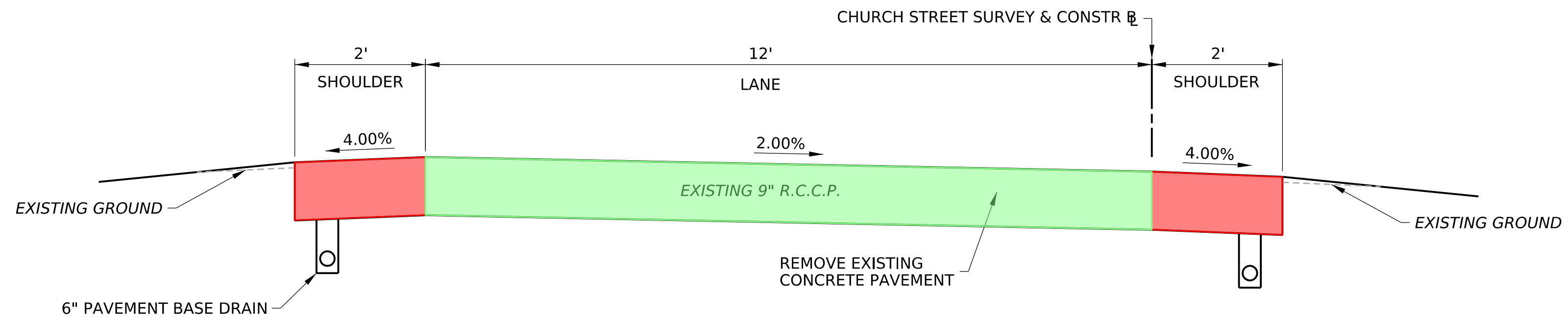
NOTES:
 PAVE SHOULDER AREA MONOLITHICALLY WITH ADJACENT TRAVEL LANE WHEN THE LANE AND SHOULDER WIDTH COMBINED IS LESS THAN OR EQUAL TO 17 FT.

- MILL AND OVERLAY
- FULL DEPTH RECONSTRUCTION ROADWAY
- FULL DEPTH RECONSTRUCTION SHOULDER



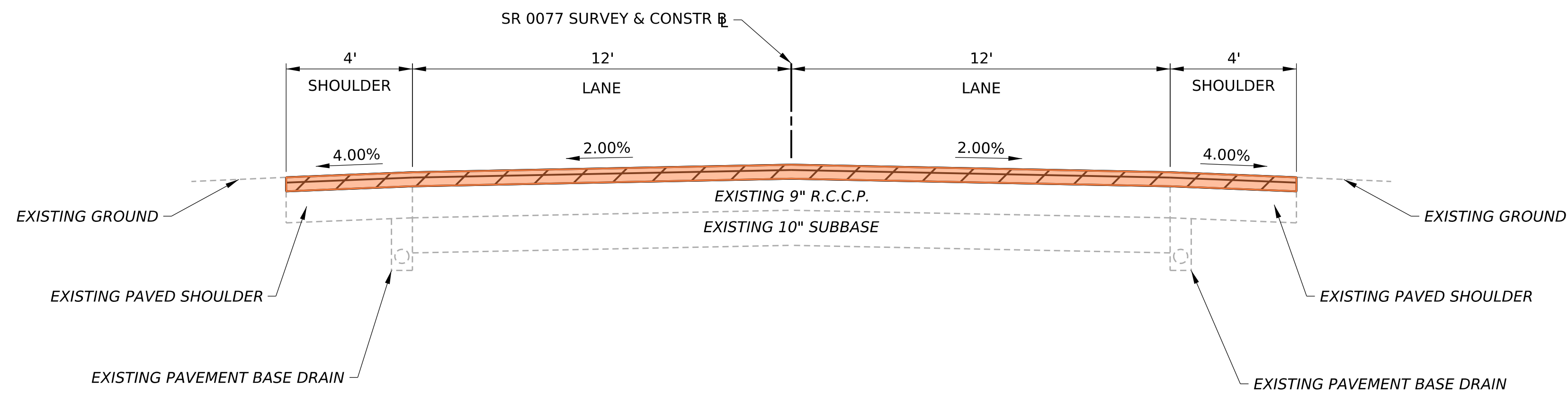
TYPICAL WEST CHURCH STREET SECTION

STA 0+00.00 TO STA 2+14.38



TYPICAL CHURCH STREET SECTION

STA 234+02.34 TO STA 238+48.31



TYPICAL TANGENT SECTION

STA 233+50.00 TO STA 234+00.00

- MILL AND OVERLAY
- FULL DEPTH RECONSTRUCTION ROADWAY
- FULL DEPTH RECONSTRUCTION SHOULDER



TYPICAL SECTIONS

NOT TO SCALE