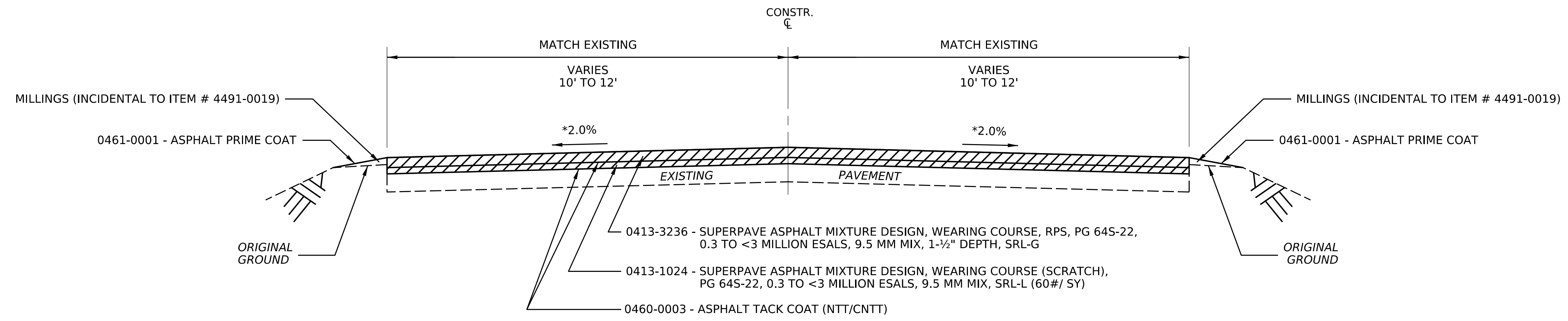


PLOTTED: 16-JAN-2025 13:48

OPERATOR: bcorklin  
FILE NAME: p:\PDEDCRAPPW01.pennDOT\ct:Connect\_P\Projects\OpenRoads\_Projects\DO1\25-Erie\25 0426 01M (109141)\DESIGN\Roadway\CADD Files\25 0426 01M (109141)\_PLAN.dgn

DISTRICT	COUNTY	ROUTE	SECTION	SHEET
1-0	ERIE		01M	4 OF 13
CITY OF CORRY				
REV NO	REVISIONS	DATE	BY	APPD



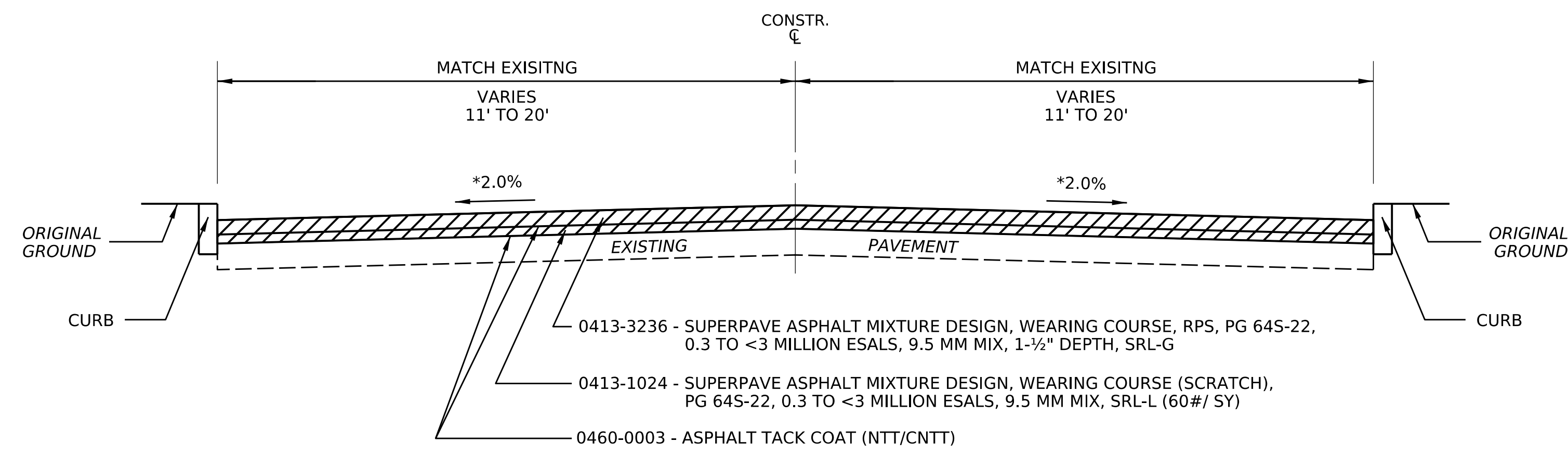
 4491-0019 - MILLING OF ASPHALT PAVEMENT SURFACE, VARIABLE DEPTH, MILLED MATERIAL RETAINED BY CONTRACTOR, SHOULDER BACKUP (TARGET DEPTH 2")

NOTE: ALL SUITABLE MATERIAL FROM PROJECT SHALL BE USED FOR SHOULDER BACKUP

\* - 2.0% OR MATCH EXISTING

### TYPICAL SECTION - S.R. 2020

STA. 109+46.00 TO 137+57.00

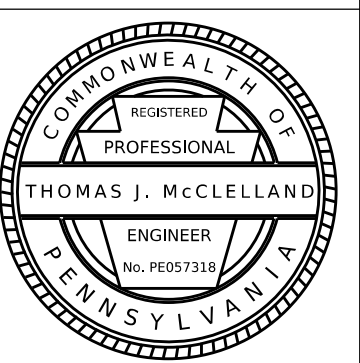


 4491-0019 - MILLING OF ASPHALT PAVEMENT SURFACE, VARIABLE DEPTH, MILLED MATERIAL RETAINED BY CONTRACTOR, SHOULDER BACKUP (TARGET DEPTH 2")

\* - 2.0% OR MATCH EXISTING

### TYPICAL CURBED SECTION - S.R. 2020

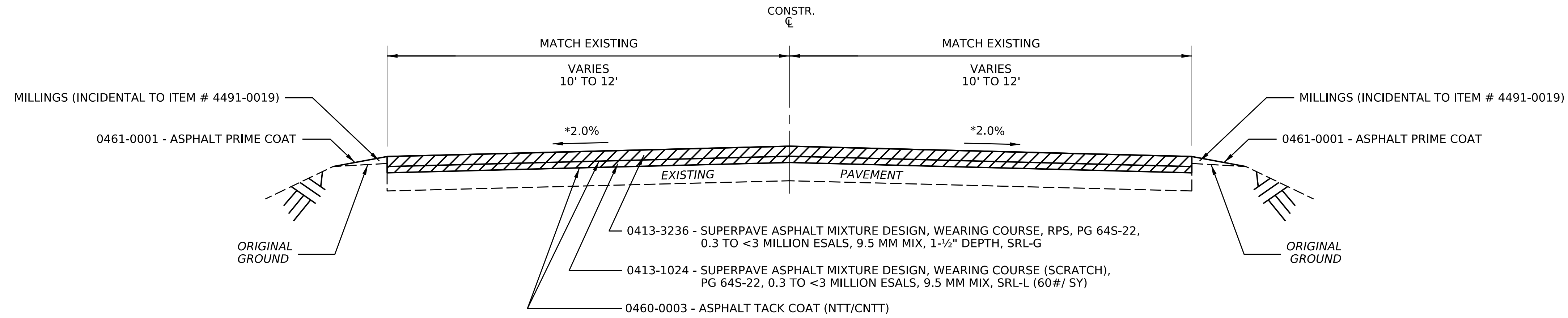
STA. 137+57.00 TO 163+04.00



PLOTTED: 16-JAN-2025 13:48

OPERATOR: bcorklin  
 FILE NAME: p:\PDEDCPRAPPW01.pennndot.lcl:Connect\_P\Projects\Documents\OpenRoads\_P\Projects\01\25-Erie\25 0426 01M (109141)\DESIGN\Roadway\CADD Files\25 0426 01M (109141)\_PLAN.dgn

DISTRICT	COUNTY	ROUTE	SECTION	SHEET
1-0	ERIE		01M	5 OF 13
CITY OF CORRY				
REV NO	REVISIONS	DATE	BY	APPD



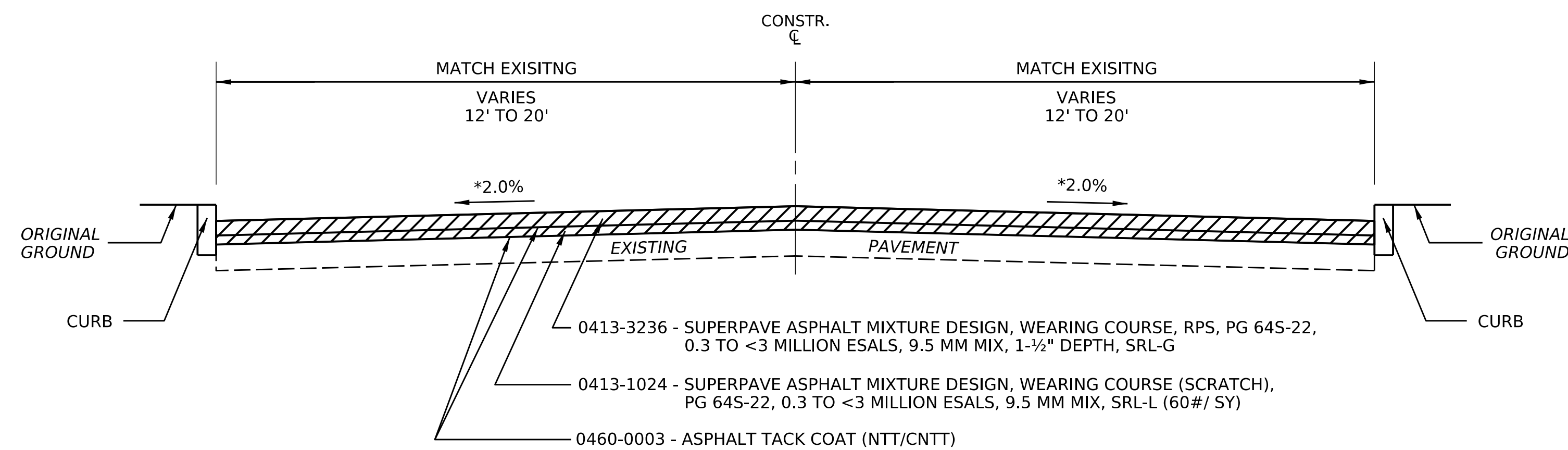
4491-0019 - MILLING OF ASPHALT PAVEMENT SURFACE, VARIABLE DEPTH, MILLED MATERIAL RETAINED BY CONTRACTOR, SHOULDER BACKUP (TARGET DEPTH 2")

NOTE: ALL SUITABLE MATERIAL FROM PROJECT SHALL BE USED FOR SHOULDER BACKUP

\* - 2.0% OR MATCH EXISTING

### TYPICAL SECTION - S.R. 2029

STA. 177+01.44 TO 186+62.00

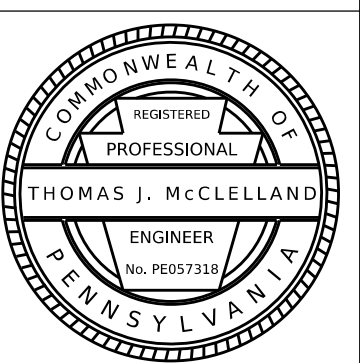


4491-0019 - MILLING OF ASPHALT PAVEMENT SURFACE, VARIABLE DEPTH, MILLED MATERIAL RETAINED BY CONTRACTOR, SHOULDER BACKUP (TARGET DEPTH 2")

\* - 2.0% OR MATCH EXISTING

### TYPICAL CURBED SECTION - S.R. 2029

STA. 186+62.00 TO 229+84.00

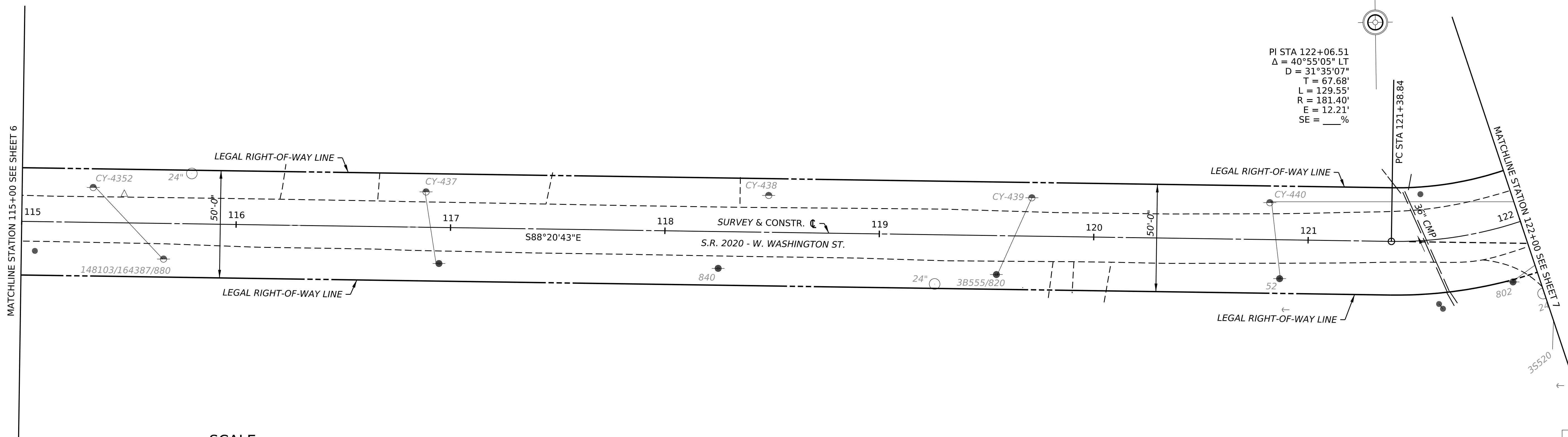
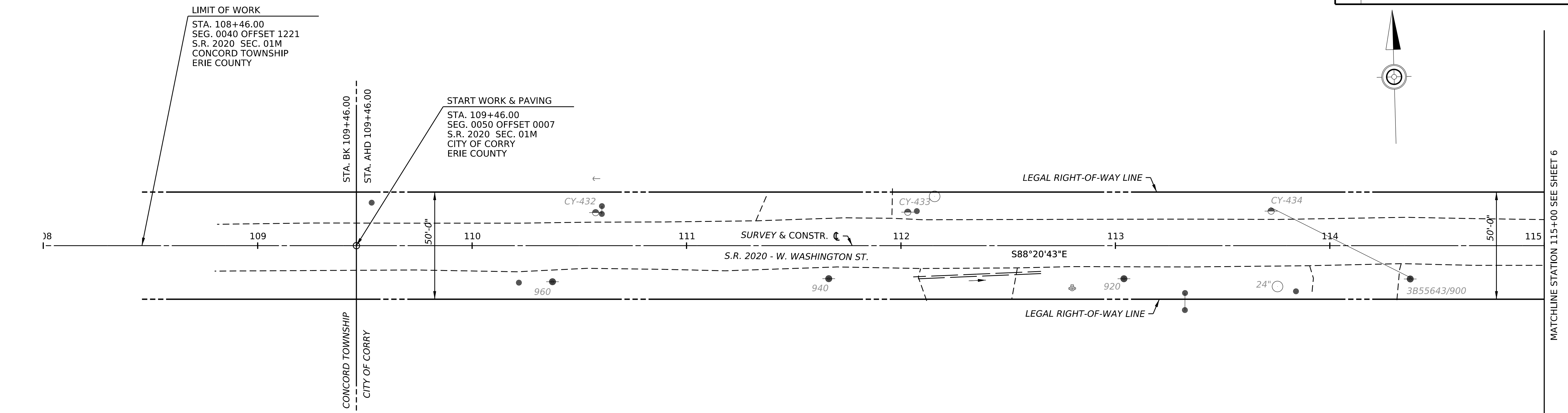
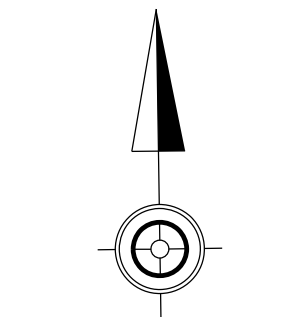
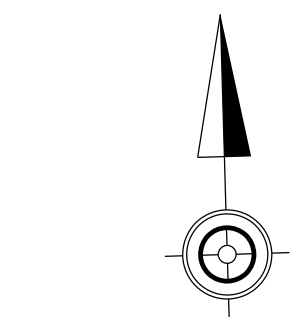


OPERATOR: bcorklin

FILE NAME: p:\PDEDCRAPPW01.pennndot.lcl:Connect\_P\Projects\Documents\OpenRoads\_P\Projects\011\25-Erie\25 0426 01M (109141)\DESIGN\Roadway\CADD Files\25 0426 01M (109141)\_PLAN.dgn

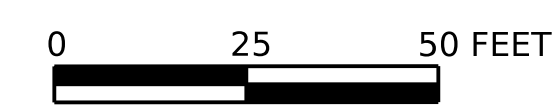
DISTRICT	COUNTY	ROUTE	SECTION	SHEET
1-0	ERIE	2020	01M	6 OF 13
CITY OF CORRY				
REV NO	REVISIONS	DATE	BY	APPD

CITY OF CORRY				
REV NO	REVISIONS	DATE	BY	APPD

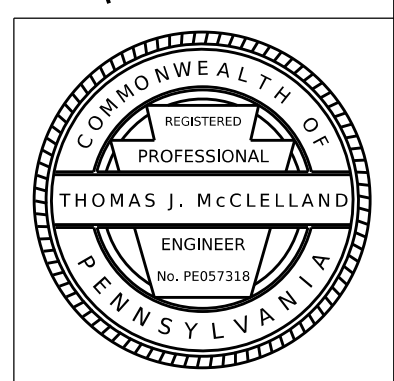


PI STA 122+06.51  
 $\Delta = 40^\circ 55' 05''$  LT  
 $D = 31^\circ 35' 07''$   
 $T = 67.68'$   
 $L = 129.55'$   
 $R = 181.40'$   
 $E = 12.21'$   
 $SE = \_\_\_\%$

SCALE



HORIZONTAL

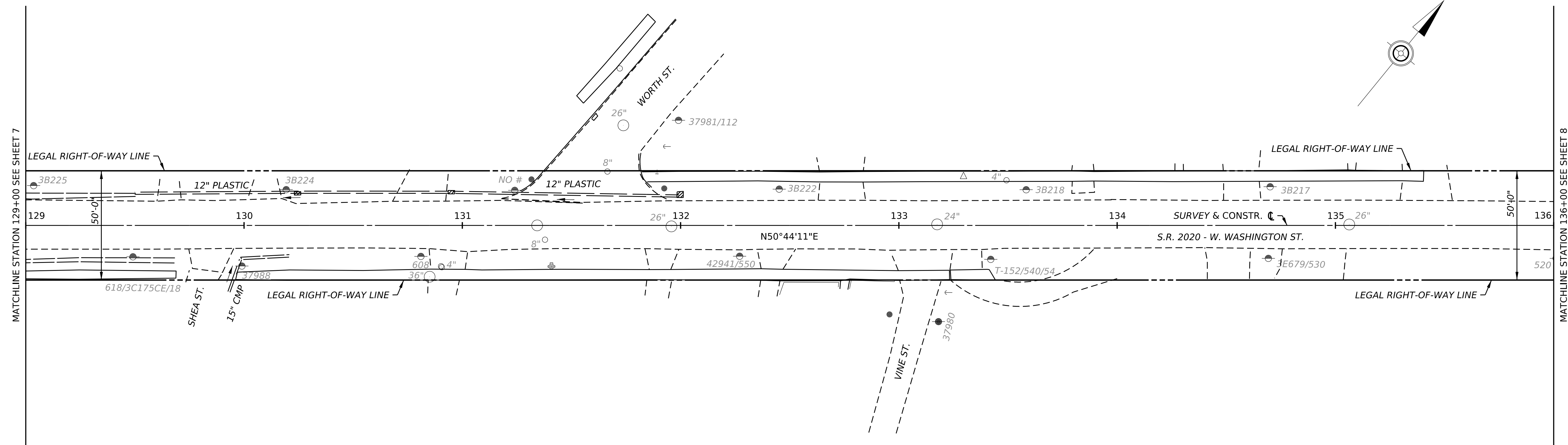
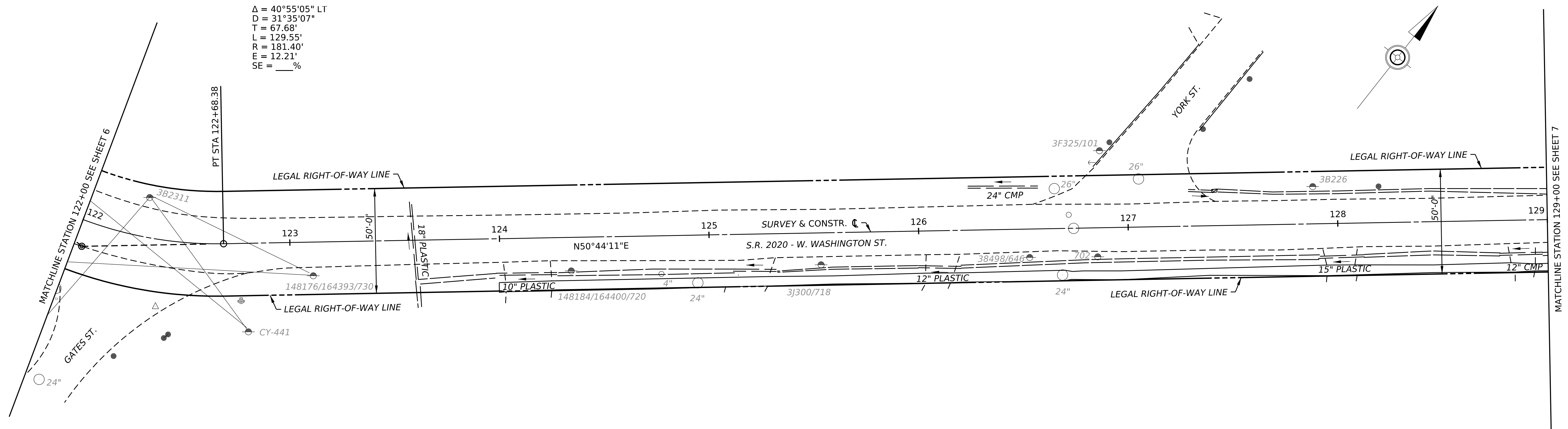


PLOTTED: 16-JAN-2025 13:48

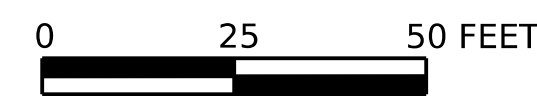
OPERATOR: bcorklin  
FILE NAME: p:\PDEDPRAPPW01.pennndot.lcl:Connect\_P\Projects\Documents\OpenRoads\_Projects\Projects\011\25-Erie\25 0426 01M (109141)\DESIGN\Roadway\CADD Files\25 0426 01M (109141)\_PLAN.dgn

DISTRICT	COUNTY	ROUTE	SECTION	SHEET
1-0	ERIE	2020	01M	7 OF 13
CITY OF CORRY				
REV NO	REVISIONS	DATE	BY	APPD

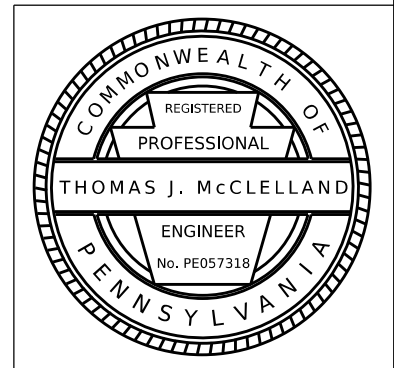
$\Delta = 40^{\circ}55'05''$  LT  
 $D = 31^{\circ}35'07''$   
 $T = 67.68'$   
 $L = 129.55'$   
 $R = 181.40'$   
 $E = 12.21'$   
 $SE = \text{---}\%$



SCALE



HORIZONTAL

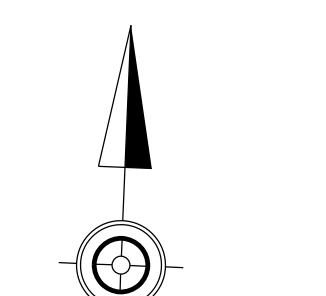
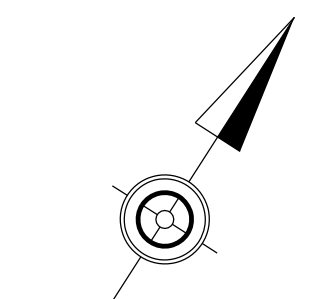
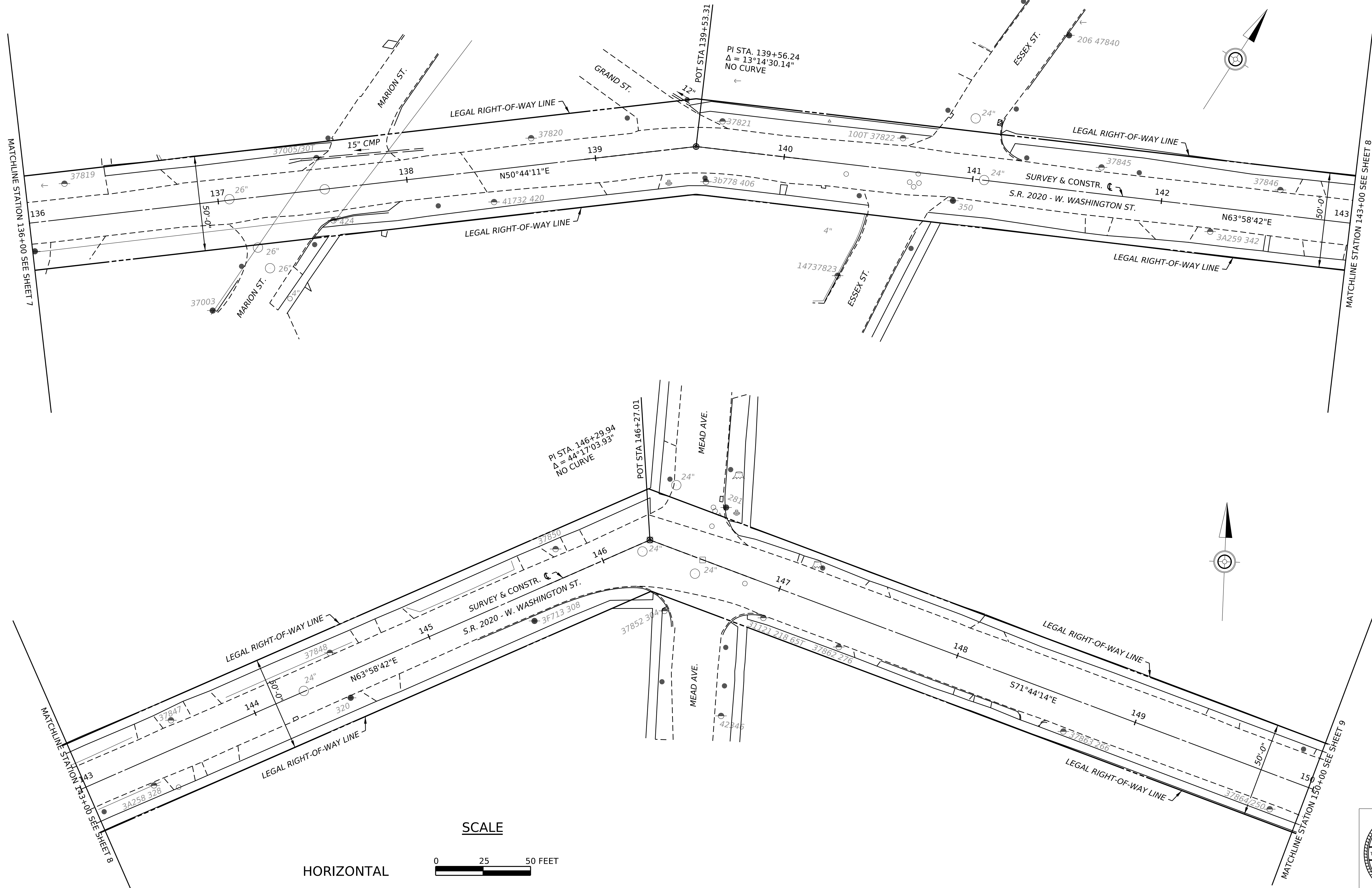


OPERATOR: bcorklin

FILE NAME: pw://PDEDCPRAPPW01.pennndot.lcl:Connect\_Projects/Documents/OpenRoads\_Projects/D01/25-Erie/25 0426 01M (109141)/DESIGN/Roadway/CADD Files/25 0426 01M (109141)\_PLAN.dgn

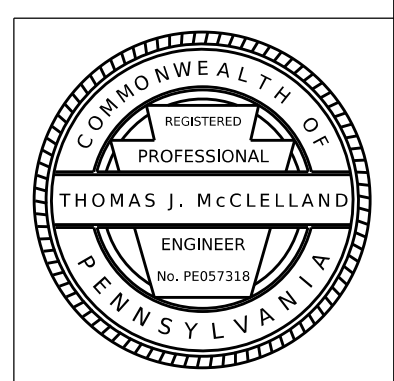
PLOTTED: 16-JAN-2025 13:48

DISTRICT	COUNTY	ROUTE	SECTION	SHEET
1-0	ERIE	2020	01M	8 OF 13
CITY OF CORRY				
REV NO	REVISIONS	DATE	BY	APPD



SCALE

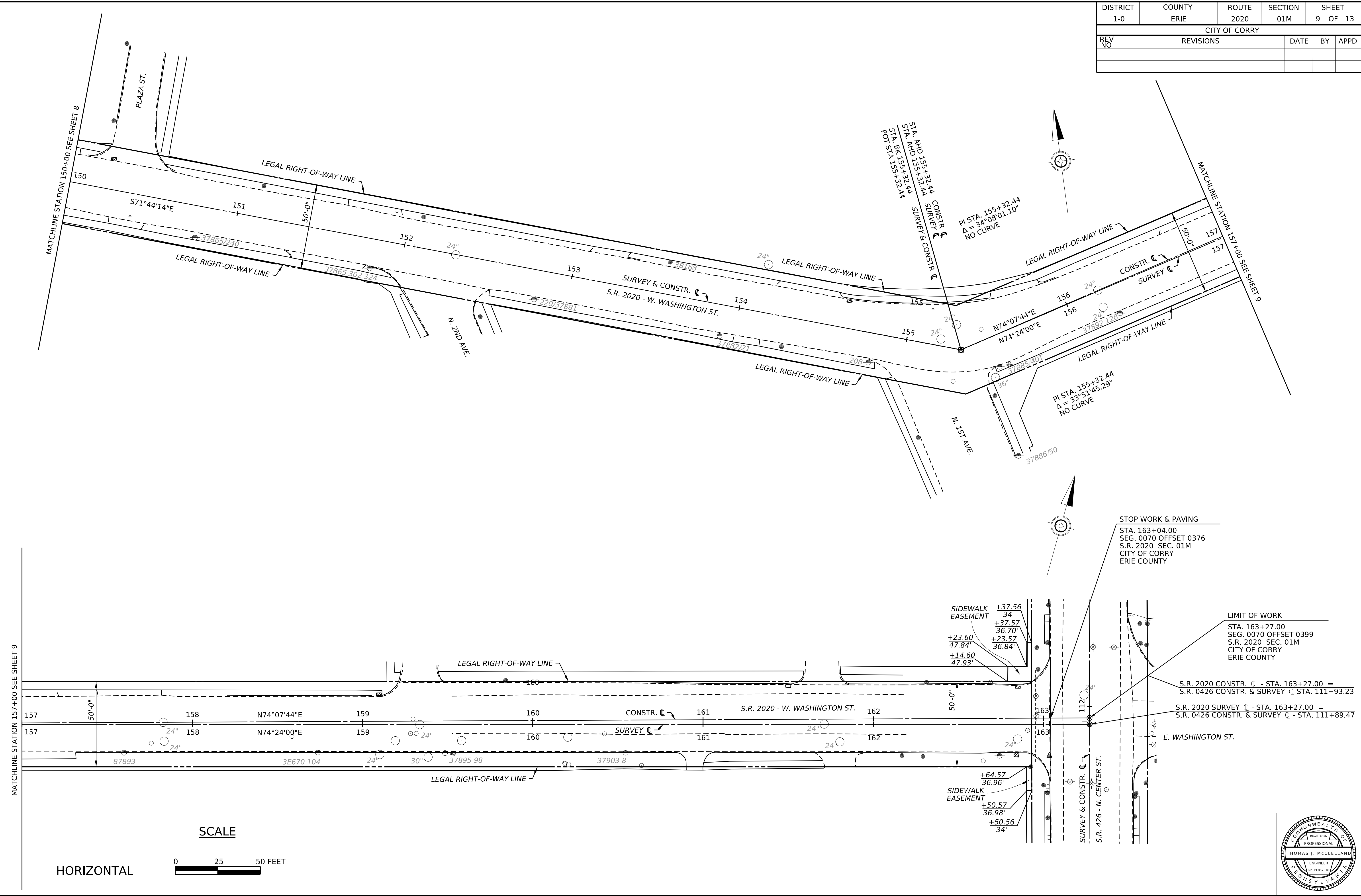
HORIZONTAL



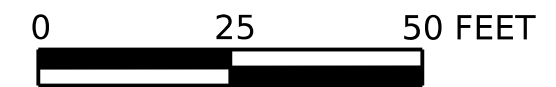
DISTRICT	COUNTY	ROUTE	SECTION	SHEET
1-0	ERIE	2020	01M	9 OF 13
CITY OF CORRY				
REV NO	REVISIONS	DATE	BY	APPD

PLOTTED: 16-JAN-2025 13:48

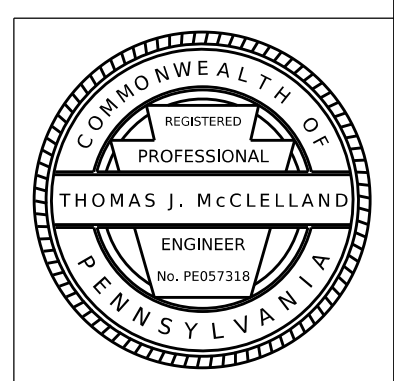
OPERATOR: bcorklin  
 FILE NAME: pw://PDEDPRAPPW01.penn.dot.icl:Connect\_Pjocets/Documents/OpenRoads\_Pjocets/D01/25-Erie/25 0426 01M (109141)/DESIGN/Roadway/CADD Files/25 0426 01M (109141)\_PLAN.dgn



SCALE



HORIZONTAL



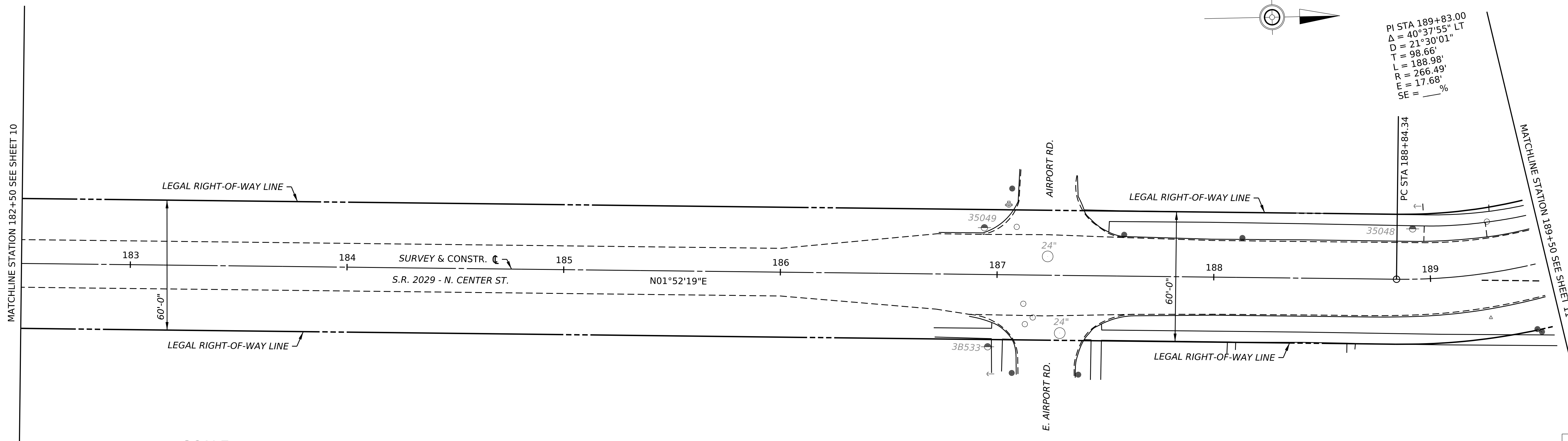
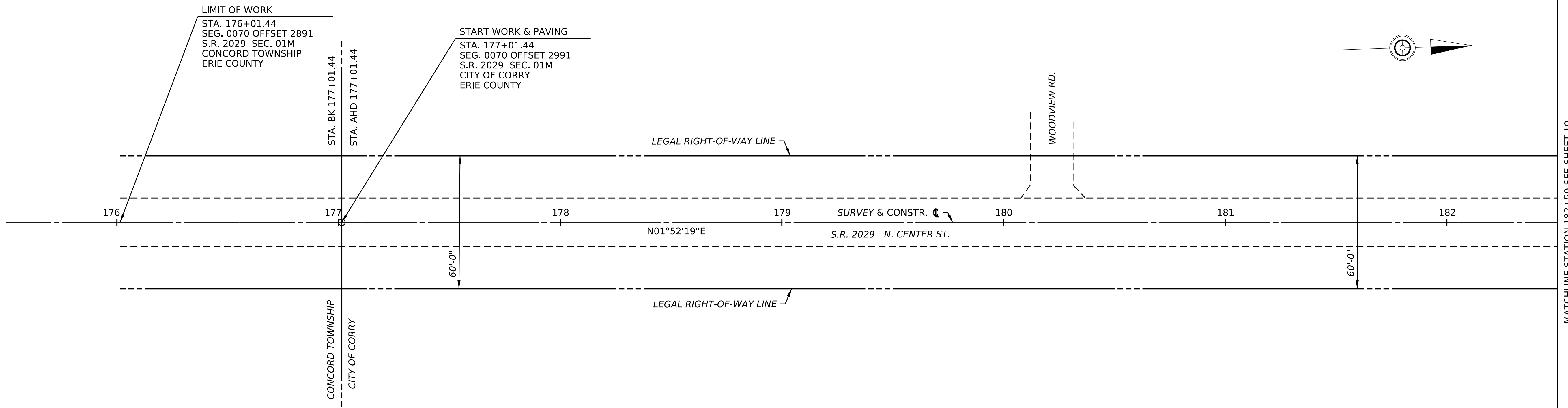
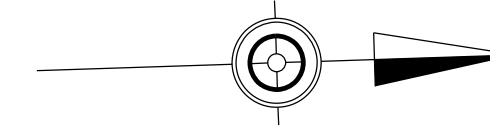


OPERATOR: bcorklin

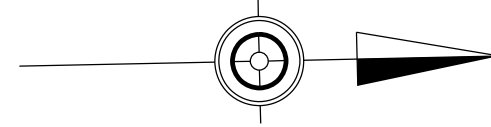
FILE NAME: pw://PDEDCRAPPW01.penn.dot\ict\connect\_projects\Documents\OpenRoads\_Projects\DO1\25-Erie\25 0426 01M (109141)\DESIGN\Roadway\CADD Files\25 0426 01M (109141)\_PLAN.dgn

PLOTTED: 16-JAN-2025 13:48

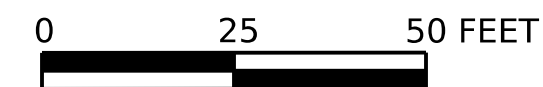
DISTRICT	COUNTY	ROUTE	SECTION	SHEET
1-0	ERIE	2029	01M	10 OF 13
CITY OF CORRY				
REV NO	REVISIONS	DATE	BY	APPD



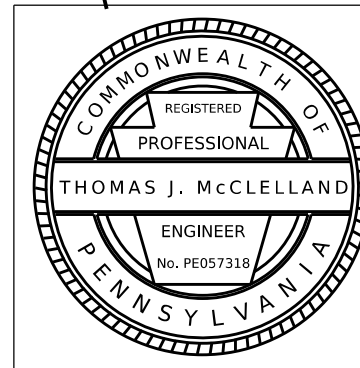
PI STA 189+83.00  
 $\Delta = 40^\circ 37' 55''$  LT  
 $D = 21^\circ 30' 01''$   
 $T = 98.66'$   
 $L = 188.98'$   
 $R = 266.49'$   
 $E = 17.68'$   
 $SE = \text{---}\%$



SCALE



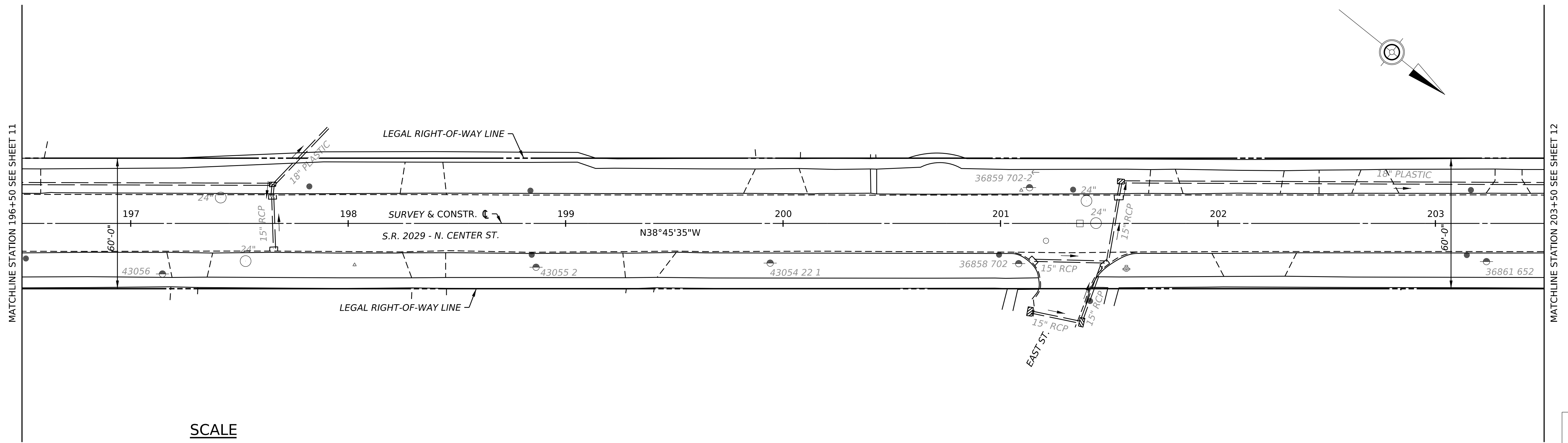
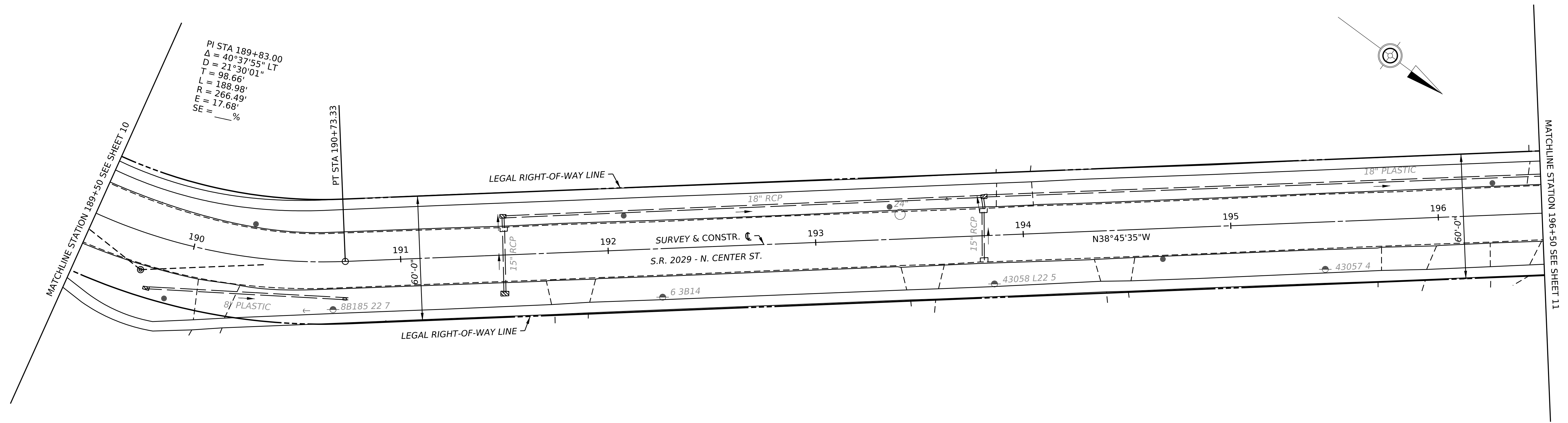
HORIZONTAL



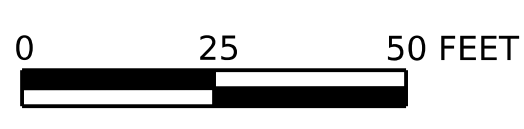
PLOTTED: 16-JAN-2025 13:48

OPERATOR: bcorklin  
FILE NAME: p:\PDEDPRAPPW01.pennndot.lcl\Connect\_P\Projects\Documents\OpenRoads\_P\Projects\01\25-Erie\25 0426 01M (109141)\DESIGN\Roadway\CADD Files\25 0426 01M (109141)\_PLAN.dgn

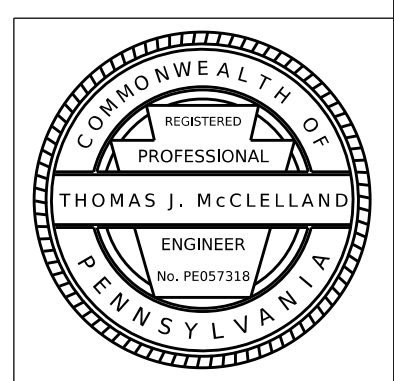
DISTRICT	COUNTY	ROUTE	SECTION	SHEET		
1-0	ERIE	2029	01M	11 OF 13		
CITY OF CORRY						
REV NO	REVISIONS			DATE	BY	APPD



SCALE



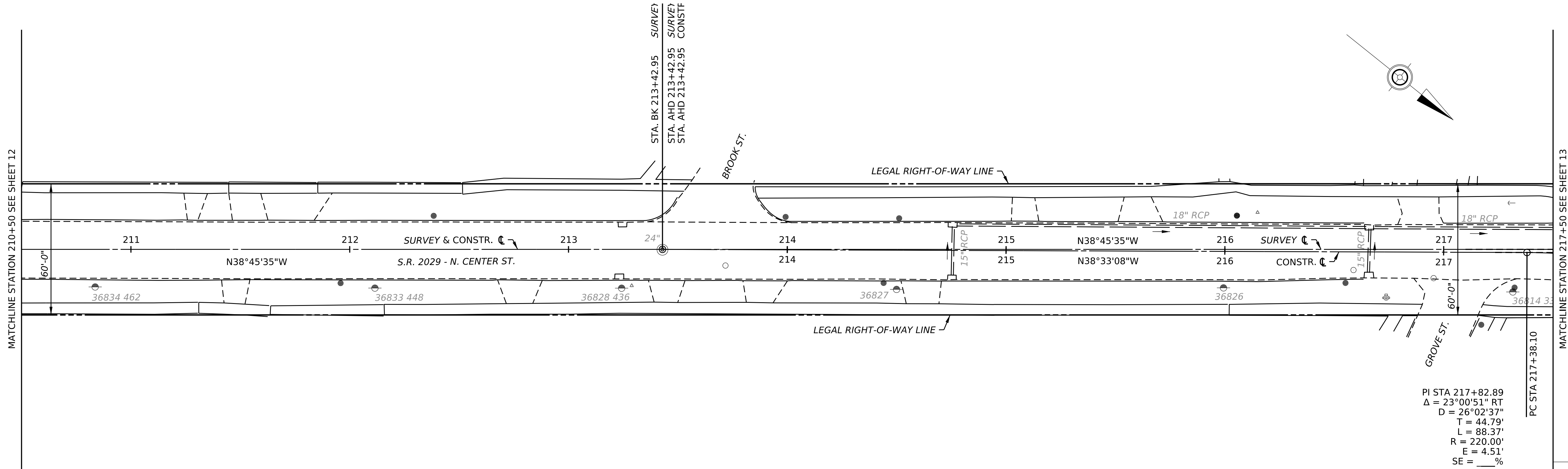
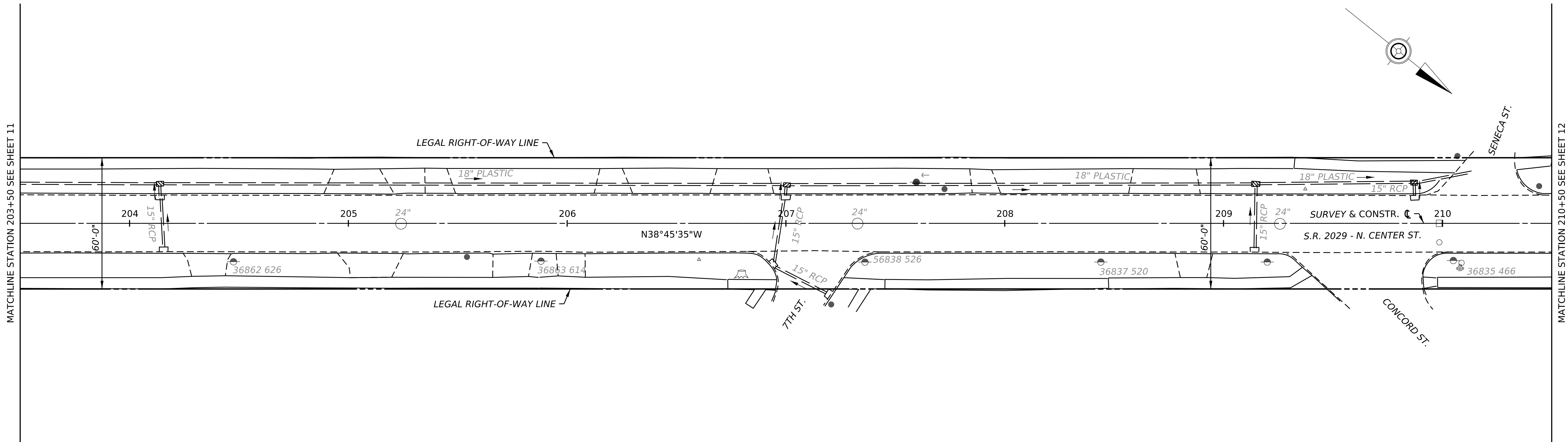
HORIZONTAL



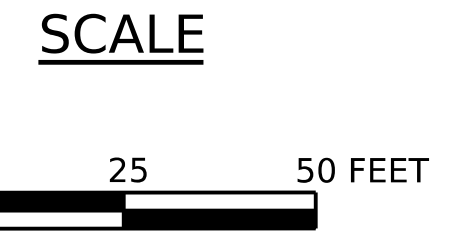


OPERATOR: bcorklin  
 FILE NAME: p://PDEDPRAPPW01.penn.dot.lcl:Connect\_P/\_Projects/Documents/OpenRoads\_/\_Projects/D01/25-Erie/25 0426 01M (109141)/DESIGN/Roadway/CADD Files/25 0426 01M (109141)\_PLAN.dgn  
 PLOTTED: 16-JAN-2025 13:48

DISTRICT	COUNTY	ROUTE	SECTION	SHEET
1-0	ERIE	2029	01M	12 OF 13
CITY OF CORRY				
REV NO	REVISIONS	DATE	BY	APPD

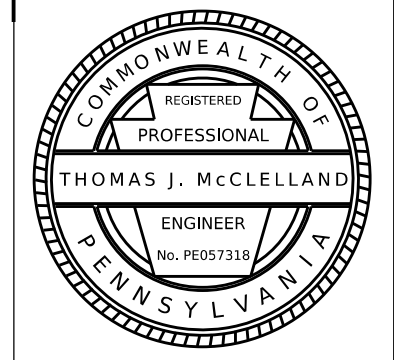


PI STA 217+82.89  
 $\Delta = 23^{\circ}00'51''$  RT  
 $D = 26^{\circ}02'37''$   
 $T = 44.79'$   
 $L = 88.37'$   
 $R = 220.00'$   
 $E = 4.51'$   
 $SE = \text{---}\%$



MATCHLINE STATION 217+50 SEE SHEET 13

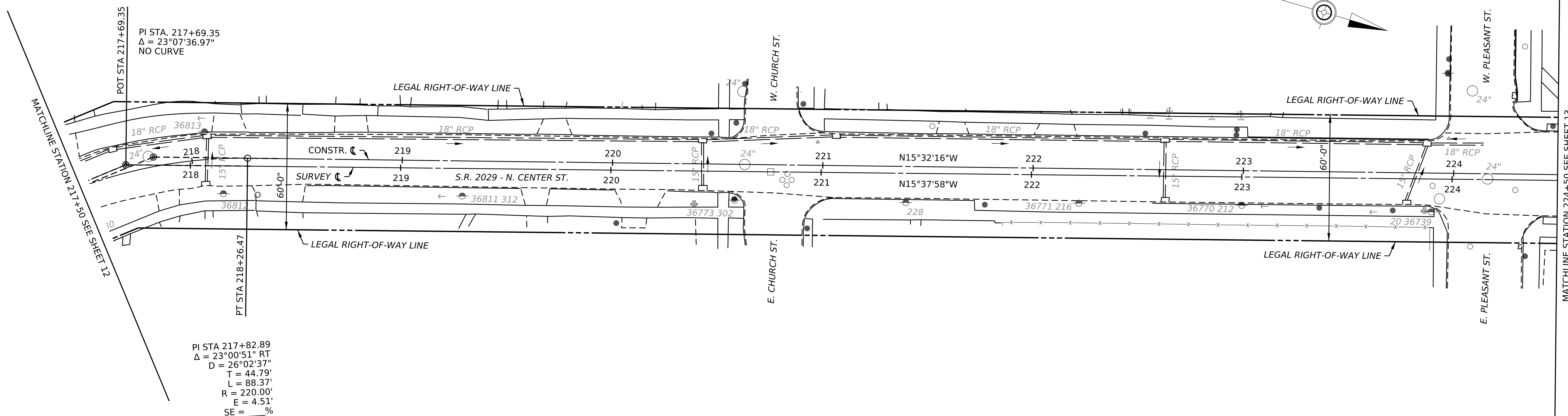
MATCHLINE STATION 210+50 SEE SHEET 12



DISTRICT	COUNTY	ROUTE	SECTION	SHEET		
1-0	ERIE	2029	01M	13 OF 13		
CITY OF CORRY						
REV NO	REVISIONS			DATE	BY	APPD

PLOTTED: 16-JAN-2025 13:48

OPERATOR: bcorklin  
FILE NAME: pw://PDEDPRAPPW01.pennndot.lcl:Connect\_Pjcts/Projects/OpenRoads/Documents/OpenRoads\_Projects/D01/25-Erie/25 0426 01M (109141)/DESIGN/Roadway/CADD Files/25 0426 01M (109141)\_PLAN.dgn



PI STA 217+82.89  
 $\Delta = 23^{\circ}00'51''$  RT  
 $D = 26^{\circ}02'37''$   
 $T = 44.79'$   
 $L = 88.37'$   
 $R = 220.00'$   
 $E = 4.51'$   
 $SE = \_\%$

**LIMIT OF WORK**  
 STA. 230+03.44  
 SEG. 0120 OFFSET 0590  
 S.R. 2029 SEC. 01M  
 CITY OF CORRY  
 ERIE COUNTY

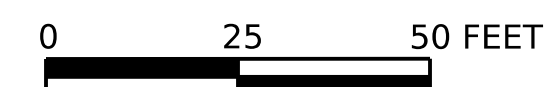
S.R. 2029 CONSTR. CL - STA. 230+03.44 = 42334 P-477  
 S.R. 0077 CONSTR. & SURVEY CL - STA. 276+95.06 =  
 S.R. 2029 SURVEY CL - STA. 230+04.17 =  
 S.R. 0077 CONSTR. & SURVEY CL - STA. 276+93.24

**STOP WORK & PAVING**  
 STA. 229+84.45  
 SEG. 0120 OFFSET 0571  
 S.R. 2029 SEC. 01M  
 CITY OF CORRY  
 ERIE COUNTY

**SIDEWALK EASEMENT**  
 +61.04  
 30'  
 +64.04  
 32.11'  
 +71.09  
 39.29'

PI STA 105+66.64  
 $\Delta = 89^{\circ}01'34''$  RT  
 $D = 143^{\circ}14'22''$   
 $T = 39.33'$   
 $L = 62.15'$   
 $R = 40.00'$   
 $E = 16.09'$   
 $SE = \_\%$

SCALE



HORIZONTAL

