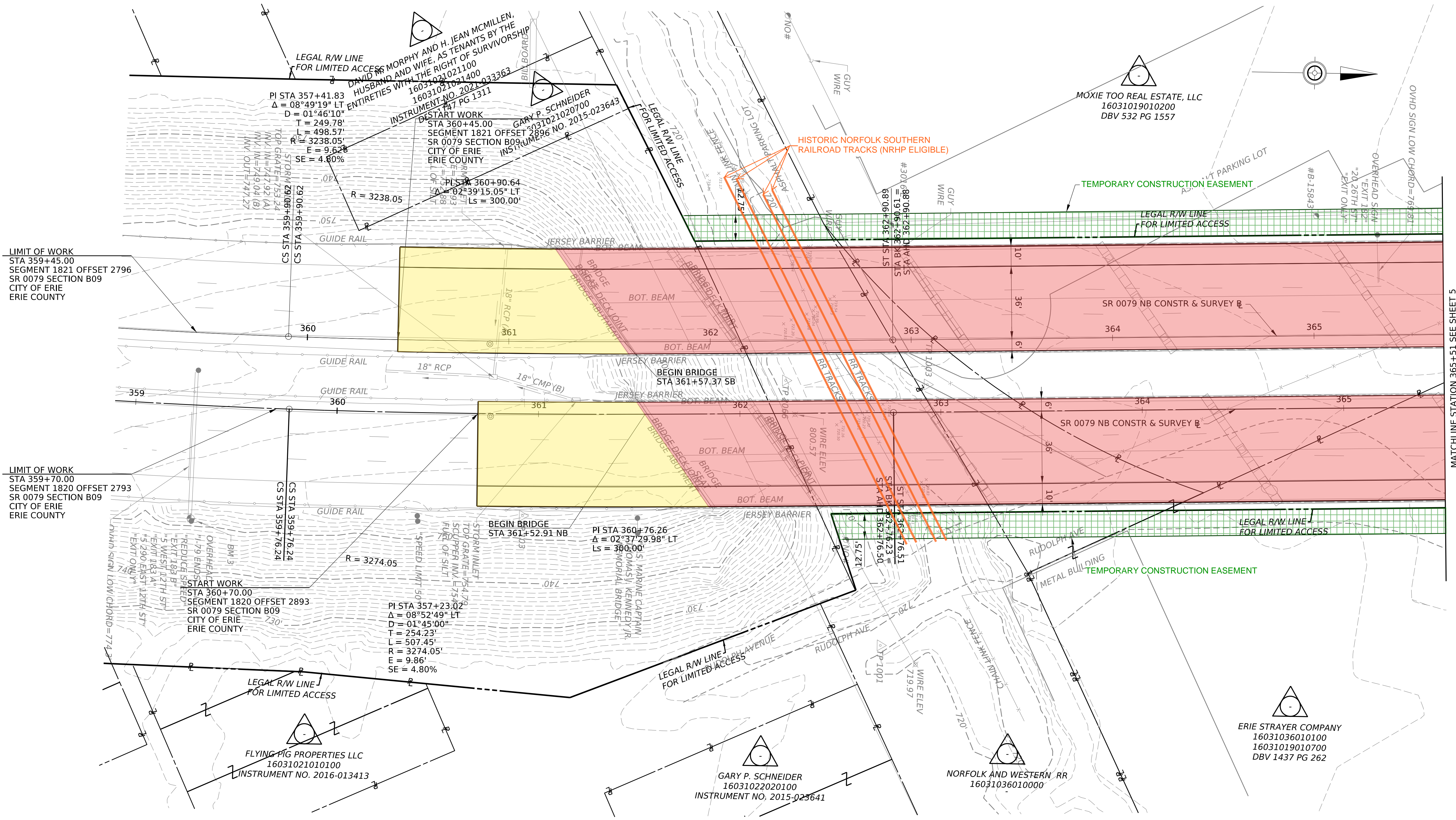


DISTRICT	COUNTY	ROUTE	SECTION	SHEET		
1-0	ERIE	0079	B09	4 OF 25		
CITY OF ERIE						
REV NO	REVISIONS			DATE	BY	APPD

PLOTTED: 23-JAN-2025 11:50

OPERATOR: USGS708145
 FILE NAME: pw://wsp-us-pw-bentley.com:wsp-us-pw-02/Documents/PA Transportation/PennDOT/District 1-0/30900800.006_SR79/STR/TSL/Public Involvement/Plans/250079809_RDpl_02.dgn



LIMIT OF WORK
 STA 359+45.00
 SEGMENT 1821 OFFSET 2796
 SR 0079 SECTION B09
 CITY OF ERIE
 ERIE COUNTY

LIMIT OF WORK
 STA 359+70.00
 SEGMENT 1820 OFFSET 2793
 SR 0079 SECTION B09
 CITY OF ERIE
 ERIE COUNTY

START WORK
 STA 360+70.00
 SEGMENT 1820 OFFSET 2893
 SR 0079 SECTION B09
 CITY OF ERIE
 ERIE COUNTY

PI STA 357+23.02
 $\Delta = 08^{\circ}52'49''$ LT
 $D = 01^{\circ}45'00''$
 $T = 254.23'$
 $L = 507.45'$
 $R = 3274.05'$
 $E = 9.86'$
 $SE = 4.80\%$

BEGIN BRIDGE
 STA 361+52.91 NB
 PI STA 360+76.26
 $\Delta = 02^{\circ}37'29.98''$ LT
 $Ls = 300.00'$

HISTORIC NORFOLK SOUTHERN
 RAILROAD TRACKS (NRHP ELIGIBLE)

MOXIE TOO REAL ESTATE, LLC
 16031019010200
 DBV 532 PG 1557

ERIE STRAYER COMPANY
 16031036010100
 16031019010700
 DBV 1437 PG 262

GARY P. SCHNEIDER
 16031022020100
 INSTRUMENT NO. 2015-023641

LEGEND

- PROPOSED PAVEMENT
- BRIDGE REHABILITATION
- TEMPORARY CONSTRUCTION EASEMENT

PRELIMINARY
 NOT FOR CONSTRUCTION

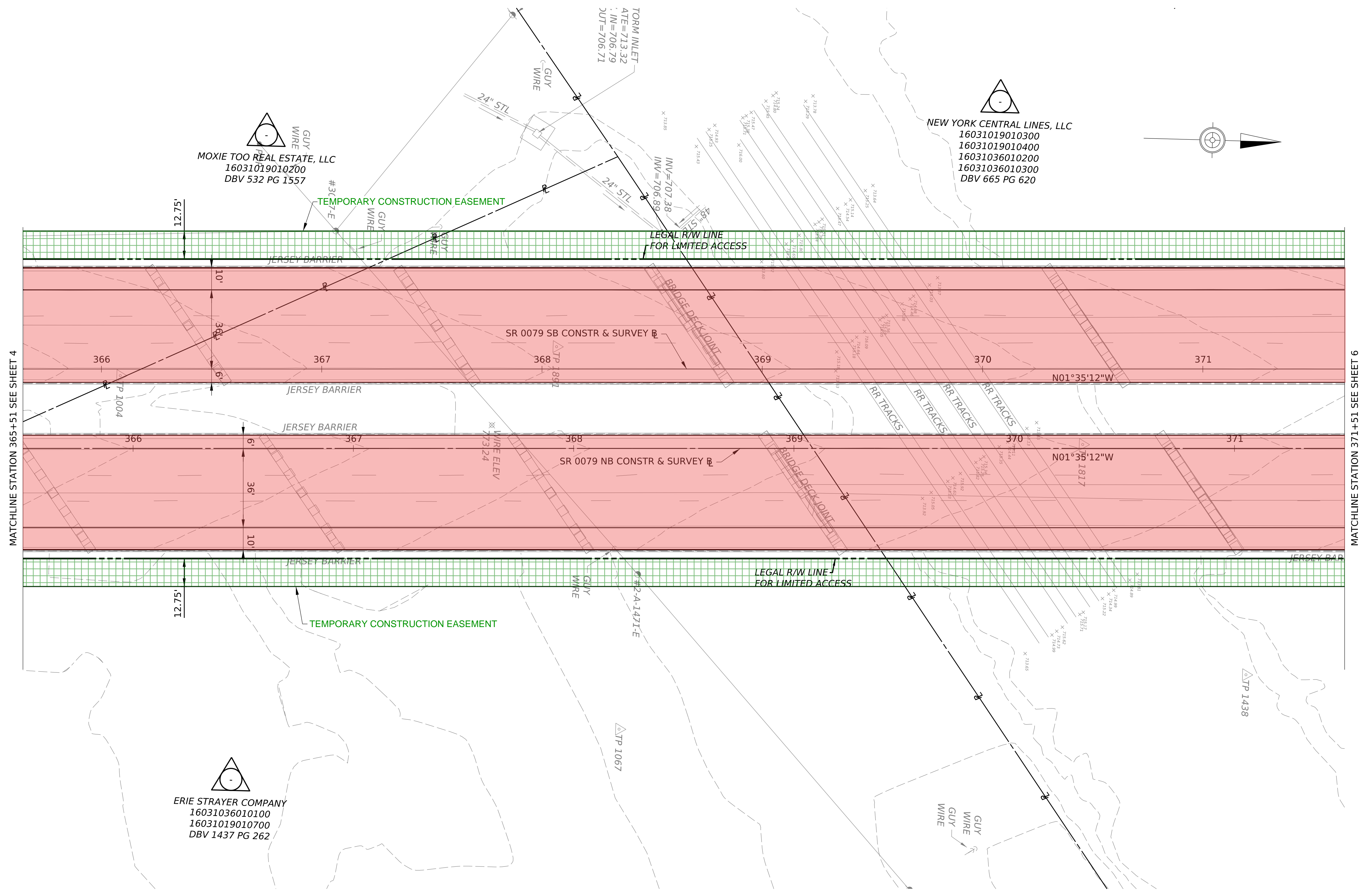


MATCHLINE STATION 365+51 SEE SHEET 5

PLOTTED: 23-JAN-2025 11:51

OPERATOR: USM0094599
FILE NAME: pw://wsp-us-pw.bentley.com:wsp-us-pw-02/Documents/PA Transportation/PennDOT/District 1-0/30900800.006_SR79/STR/TSL/Public Involvement Plans/250079809_RDpl_03.dgn

DISTRICT	COUNTY	ROUTE	SECTION	SHEET
1-0	ERIE	0079	B09	5 OF 25
CITY OF ERIE				
REV NO	REVISIONS	DATE	BY	APPD



MOXIE TOO REAL ESTATE, LLC
16031019010200
DBV 532 PG 1557

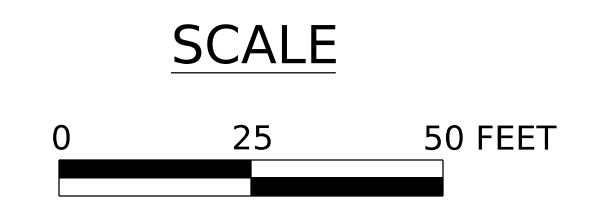
NEW YORK CENTRAL LINES, LLC
16031019010300
16031019010400
16031036010200
16031036010300
DBV 665 PG 620

ERIE STRAYER COMPANY
16031036010100
16031019010700
DBV 1437 PG 262

LEGEND

- PROPOSED PAVEMENT
- BRIDGE REHABILITATION
- TEMPORARY CONSTRUCTION EASEMENT

PRELIMINARY
NOT FOR CONSTRUCTION



MATCHLINE STATION 365+51 SEE SHEET 4

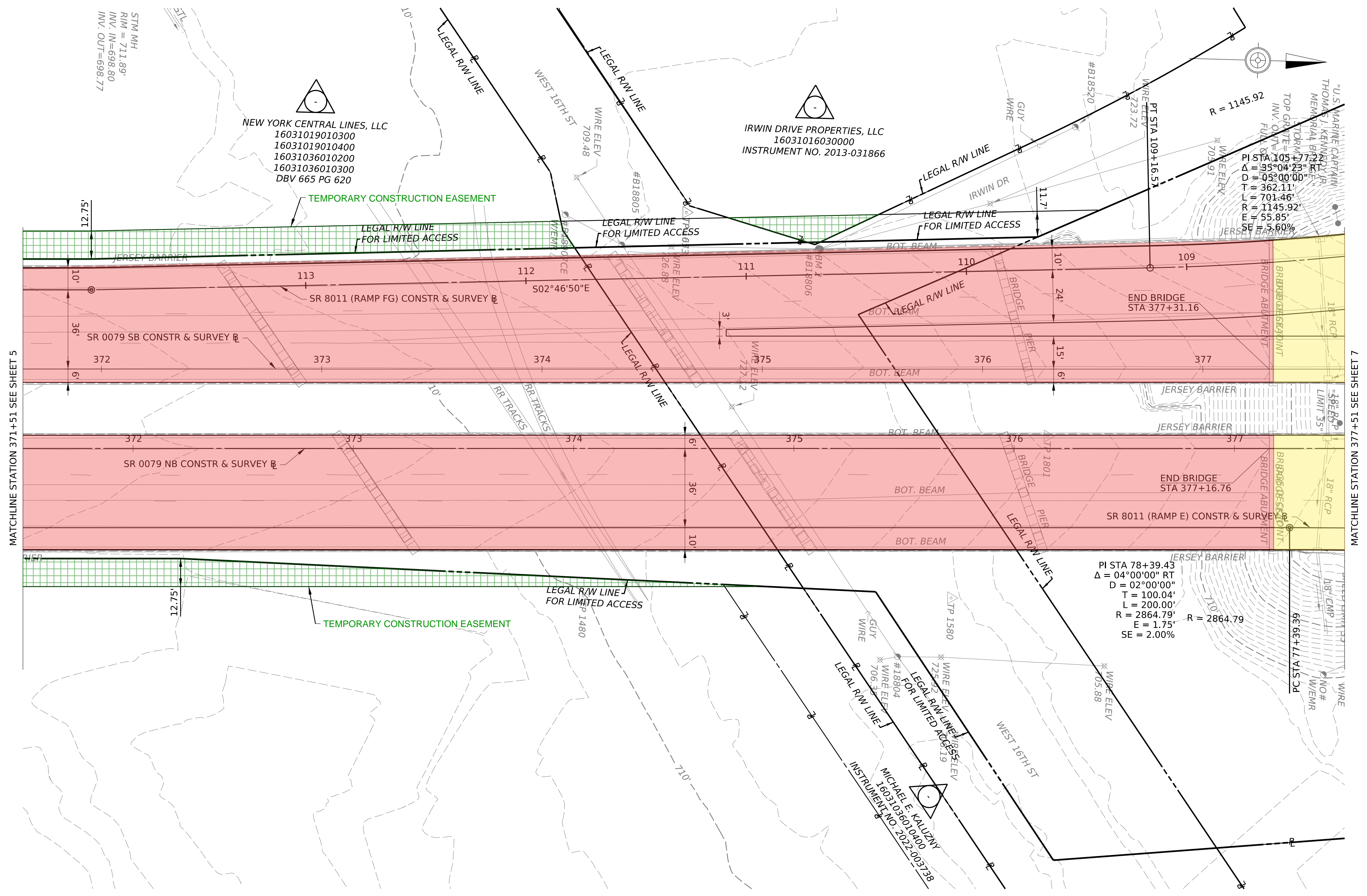
MATCHLINE STATION 371+51 SEE SHEET 6

OPERATOR: USM0094599

FILE NAME: pw://wsp-us-pw.bentley.com:wsp-us-pw-02/Documents/PA Transportation/PennDOT/District 1-0/30900800.006_SR79/STR/TSL/Public Involvement Plans/250079809_RDpl_04.dgn

PLOTTED: 23-JAN-2025 11:51

DISTRICT	COUNTY	ROUTE	SECTION	SHEET		
1-0	ERIE	0079	B09	6 OF 25		
CITY OF ERIE						
REV NO	REVISIONS			DATE	BY	APPD

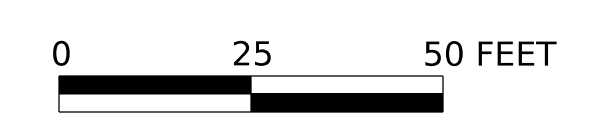


LEGEND

- PROPOSED PAVEMENT
- BRIDGE REHABILITATION
- TEMPORARY CONSTRUCTION EASEMENT

PRELIMINARY
NOT FOR CONSTRUCTION

SCALE



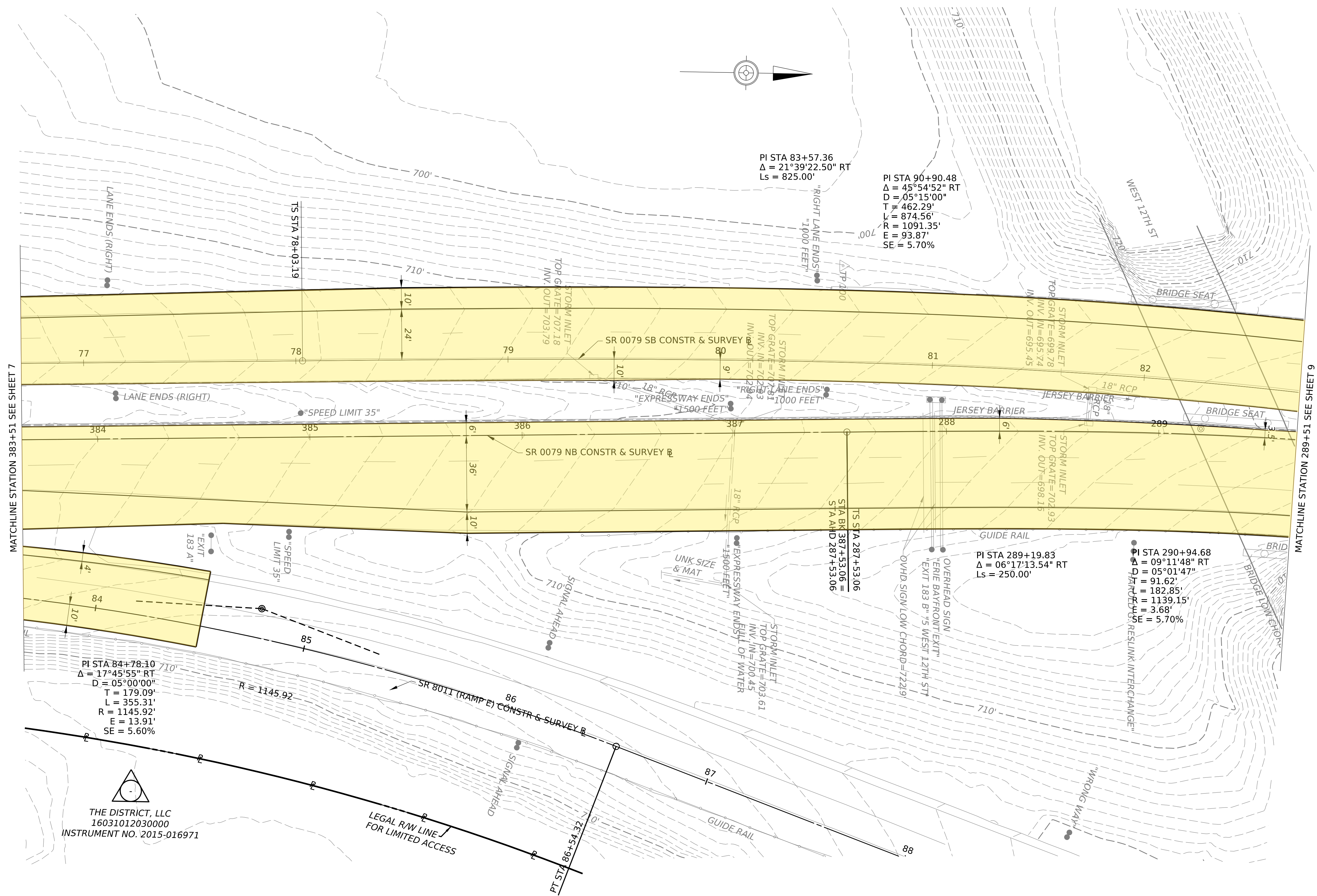
MATCHLINE STATION 371+51 SEE SHEET 5

MATCHLINE STATION 377+51 SEE SHEET 7

DISTRICT	COUNTY	ROUTE	SECTION	SHEET
1-0	ERIE	0079	B09	8 OF 25
CITY OF ERIE				
REV NO	REVISIONS	DATE	BY	APPD

PLOTTED: 23-JAN-2025 11:51

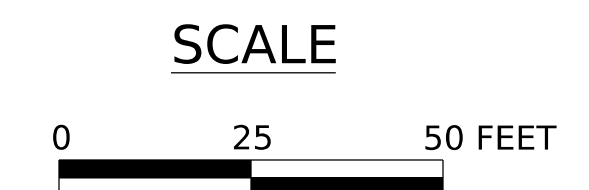
OPERATOR: USM0094599
FILE NAME: pw://wsp-us-pw-bentley.com/wsp-us-pw-02/Documents/PA Transportation/PennDOT/District 1-0/30900800.006_SR79/STR/TSL/Public Involvement Plans/250079809_RDpl_06.dgn



LEGEND

- PROPOSED PAVEMENT
- BRIDGE REHABILITATION

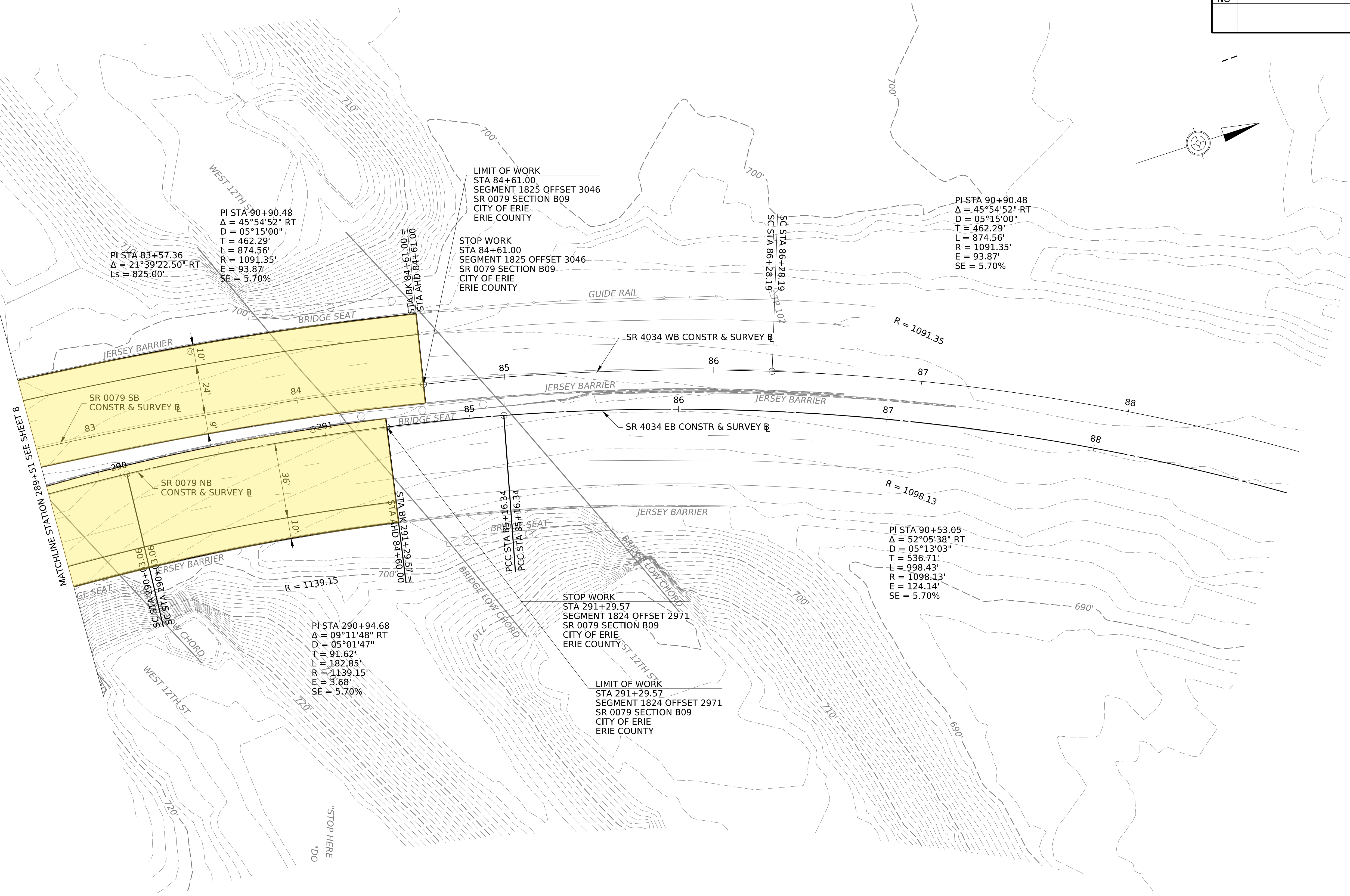
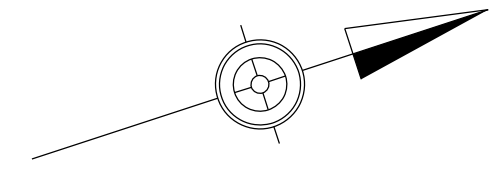
PRELIMINARY
NOT FOR CONSTRUCTION



DISTRICT	COUNTY	ROUTE	SECTION	SHEET
1-0	ERIE	0079	B09	9 OF 25
CITY OF ERIE				
REV NO	REVISIONS	DATE	BY	APPD

PLOTTED: 23-JAN-2025 11:51

OPERATOR: USM0094599
FILE NAME: pw://wsp-us-pw.bentley.com:wsps-us-pw-02/Documents/PA Transportation/PennDOT/District 1-0/30900800.006_SR79/STR/TSL/Public Involvement Plans/250079809_RDpl_07.dgn

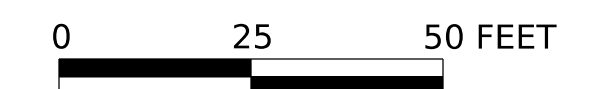


LEGEND

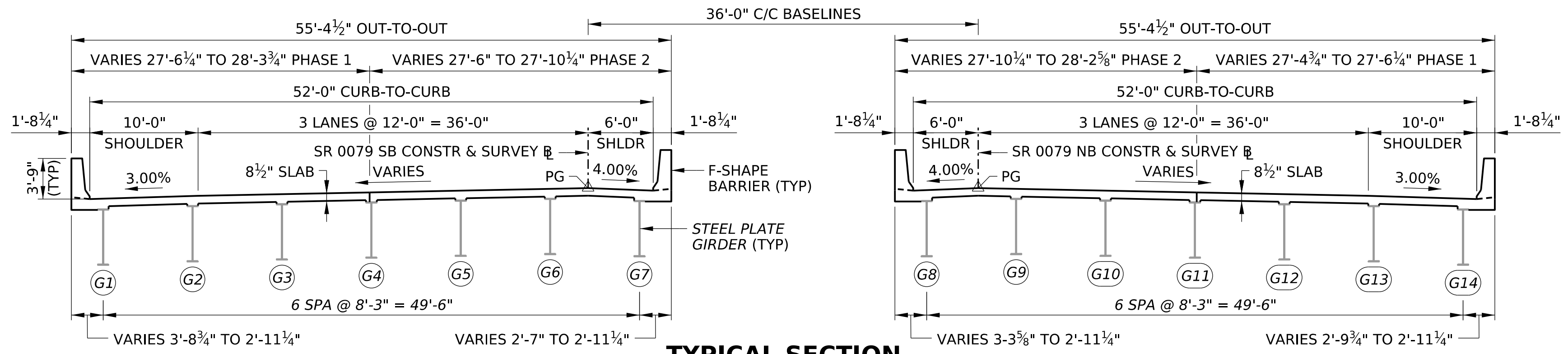
- PROPOSED PAVEMENT
- BRIDGE REHABILITATION

**PRELIMINARY
NOT FOR CONSTRUCTION**

SCALE

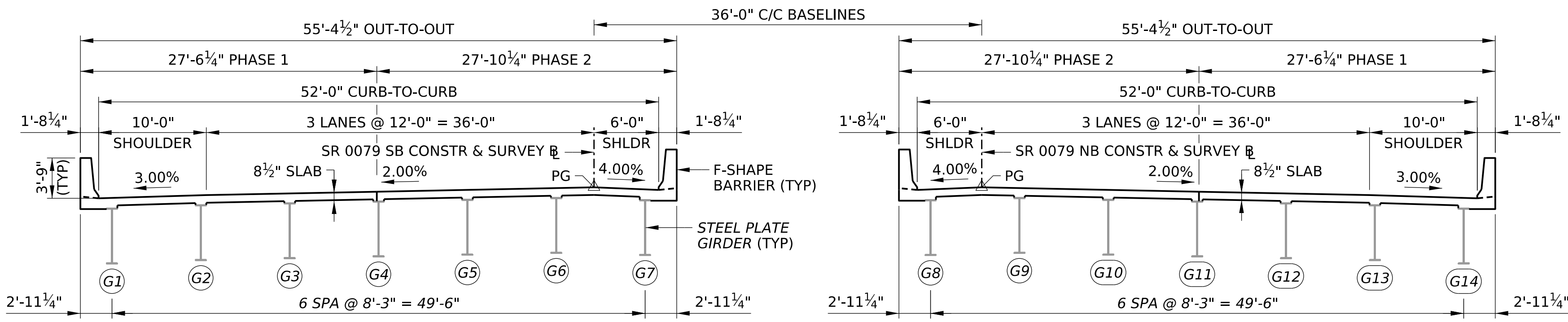


"STOP HERE"
"DO"



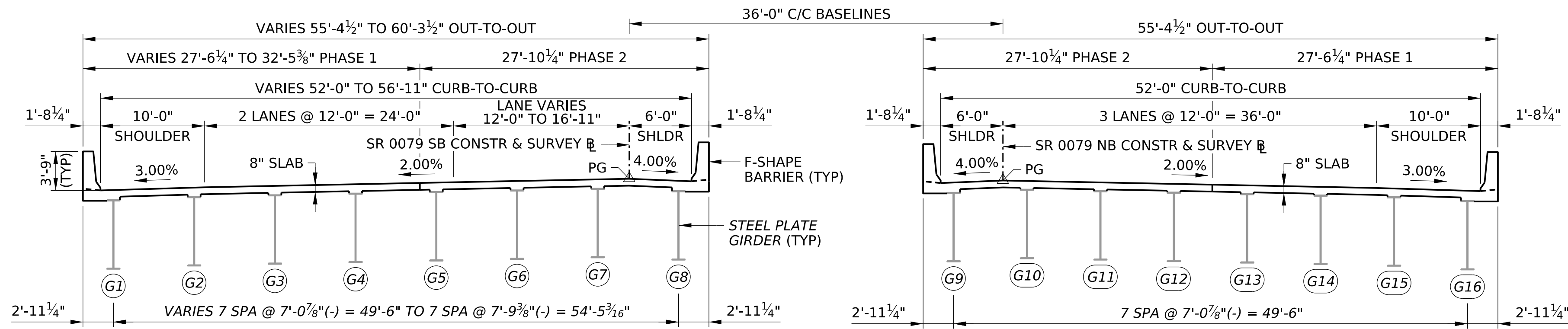
TYPICAL SECTION

SPANS 1-4
2 0 4 8 FEET



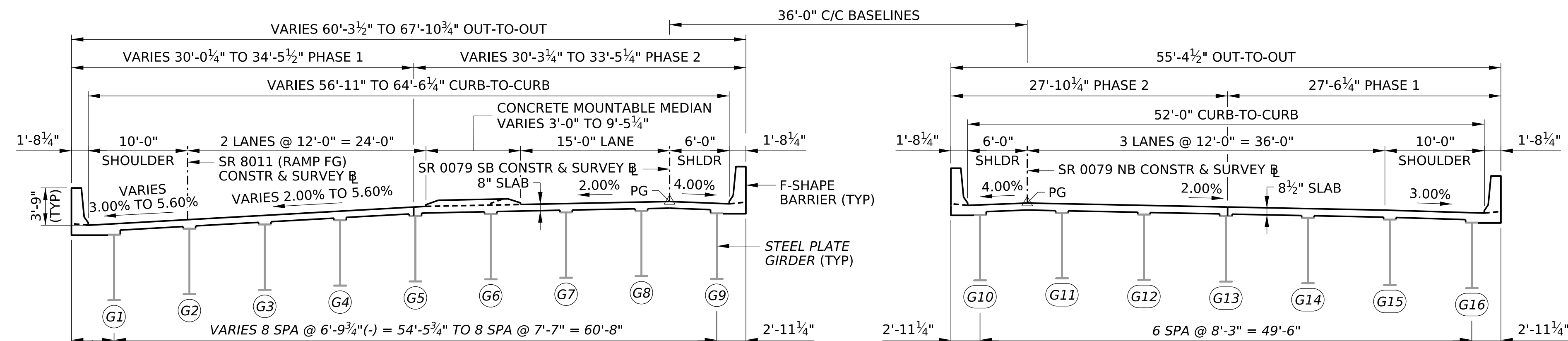
TYPICAL SECTION

SPANS 5-7
2 0 4 8 FEET



TYPICAL SECTION

SPANS 8-10
2 0 4 8 FEET



TYPICAL SECTION

SPANS 11-12
2 0 4 8 FEET

NOTES:

1. FOR PROTECTIVE FENCING LIMITS, SEE SHEETS 1 & 2.
2. FOR PROJECT SCOPE OF WORK, SEE SHEET 2.
3. FOR CONSTRUCTION PHASING SECTIONS, SEE SHEETS 4-9.

Mark	Description	By	Chk'd	Recm'd.	Date
REVISIONS					

S.R. 0079 PREVIOUSLY KNOWN AS L.R. 1003
 BMS STR ID: 25-0079-1824-0000 (NB) MPMS/ECMS PROJ: 115467 BRKEY: 15986 (NB)
 BMS STR ID: 25-0079-1825-0042 (SB) BRKEY: 15990 (SB)

**COMMONWEALTH OF PENNSYLVANIA
DEPARTMENT OF TRANSPORTATION**

**ERIE COUNTY
S.R. 0079, SECTION B09**
 SEGMENT 1824, OFFSET 0000, S.R. 0079 NB STA 369+35.00
 SEGMENT 1825, OFFSET 0042, S.R. 0079 SB STA 369+40.00
 OVER CSX & NORFOLK SOUTHERN RAILROADS, IRWIN DRIVE,
 RUDOLPH AVENUE, AND WEST 16TH STREET
 REHABILITATION OF DUAL 12-SPAN STEEL PLATE GIRDER BRIDGES

TYPICAL SECTIONS

RECOMMENDED _____

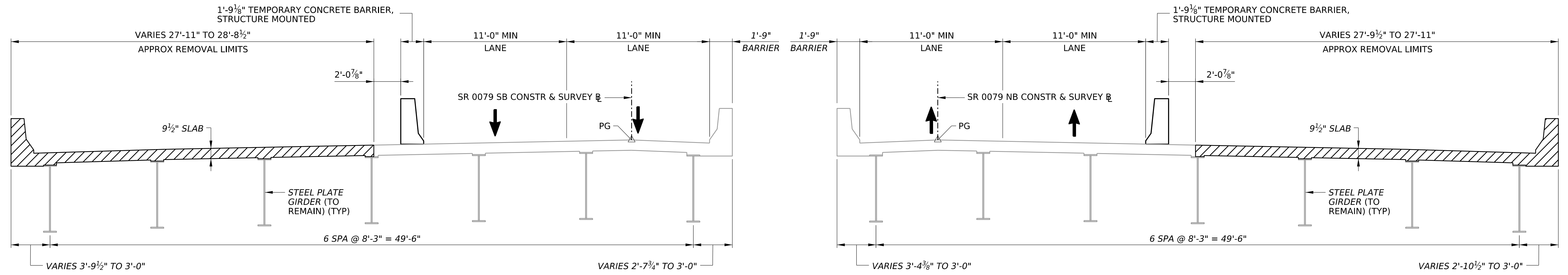
SHEET 3 OF 9

S - 42755

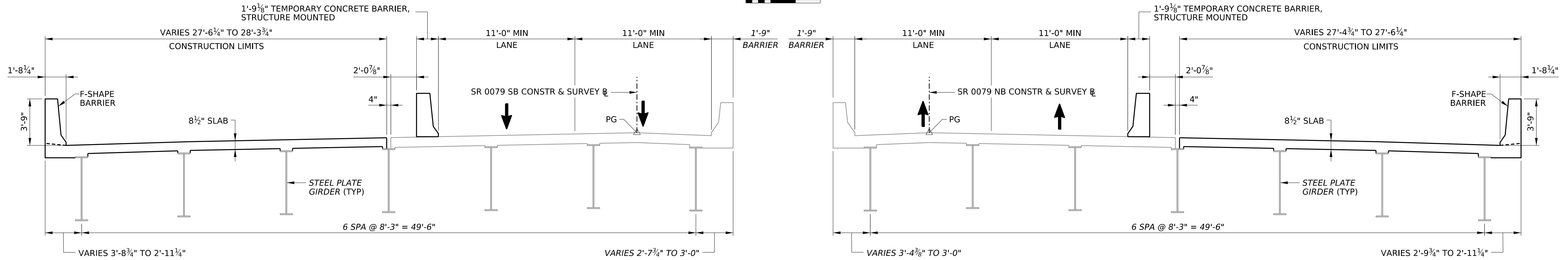
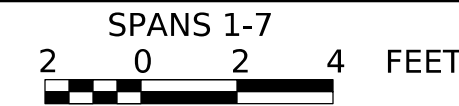
**PRELIMINARY
NOT FOR CONSTRUCTION**

PLOTTED: 16-JAN-2025 20:24

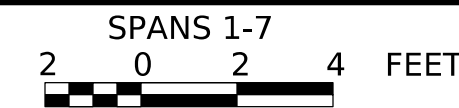
OPERATOR: FILE NAME: pw://wsp-us-pw.bentley.com:wp-us-pw-02/Documents/PA Transportation/PennDOT/District 1-0/30900800.006_SR79/STR/TS/Plans/79_ph01.dgn



PHASE 1 - REMOVAL



PHASE 1 - CONSTRUCTION



LEGEND:

- REMOVAL LIMITS FOR EXISTING STRUCTURE

NOTES:

- 1. PROVIDE TYPE 1 INSTALLATION AS PER BC-719M.

Mark	Description	By	Chk'd	Recm'd.	Date
REVISIONS					

S.R. 0079 PREVIOUSLY KNOWN AS L.R. 1003
 BMS STR ID: 25-0079-1824-0000 (NB) MPMS/ECMS PROJ: 115467 BRKEY: 15986 (NB)
 BMS STR ID: 25-0079-1825-0042 (SB) BRKEY: 15990 (SB)

**PRELIMINARY
NOT FOR CONSTRUCTION**

**COMMONWEALTH OF PENNSYLVANIA
DEPARTMENT OF TRANSPORTATION**

**ERIE COUNTY
S.R. 0079, SECTION B09**
 SEGMENT 1824, OFFSET 0000, S.R. 0079 NB STA 369+35.00
 SEGMENT 1825, OFFSET 0042, S.R. 0079 SB STA 369+40.00
 OVER CSX & NORFOLK SOUTHERN RAILROADS, IRWIN DRIVE,
 RUDOLPH AVENUE, AND WEST 16TH STREET
 REHABILITATION OF DUAL 12-SPAN STEEL PLATE GIRDER BRIDGES

CONSTRUCTION PHASING SECTIONS - 1

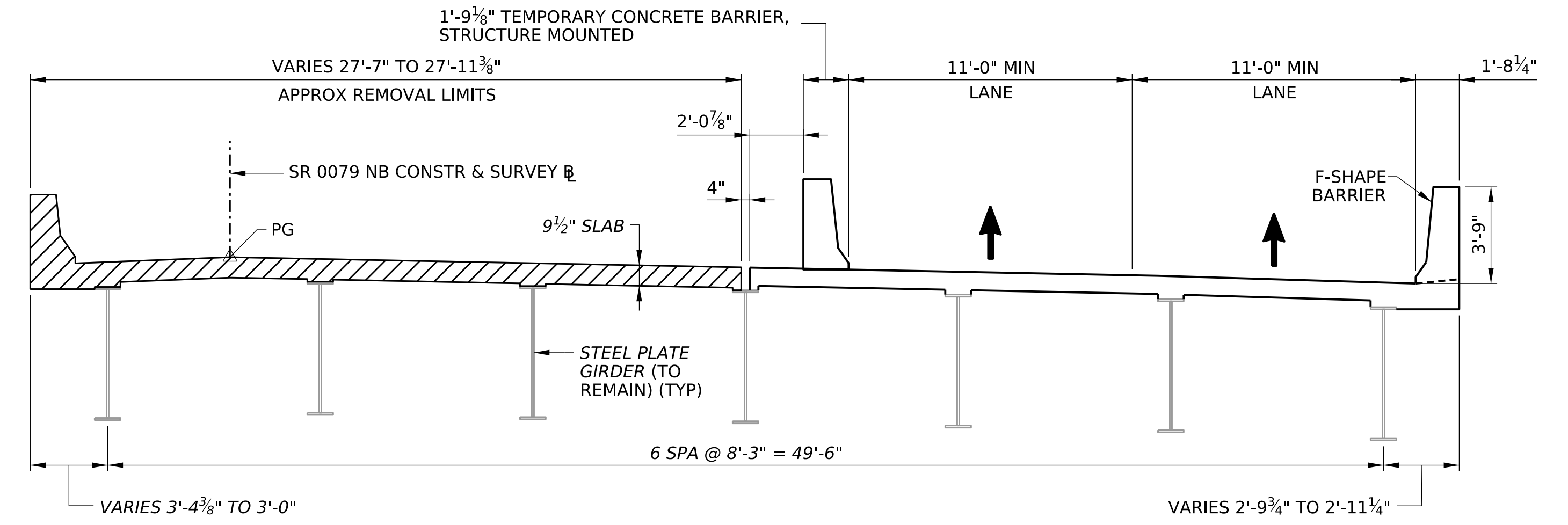
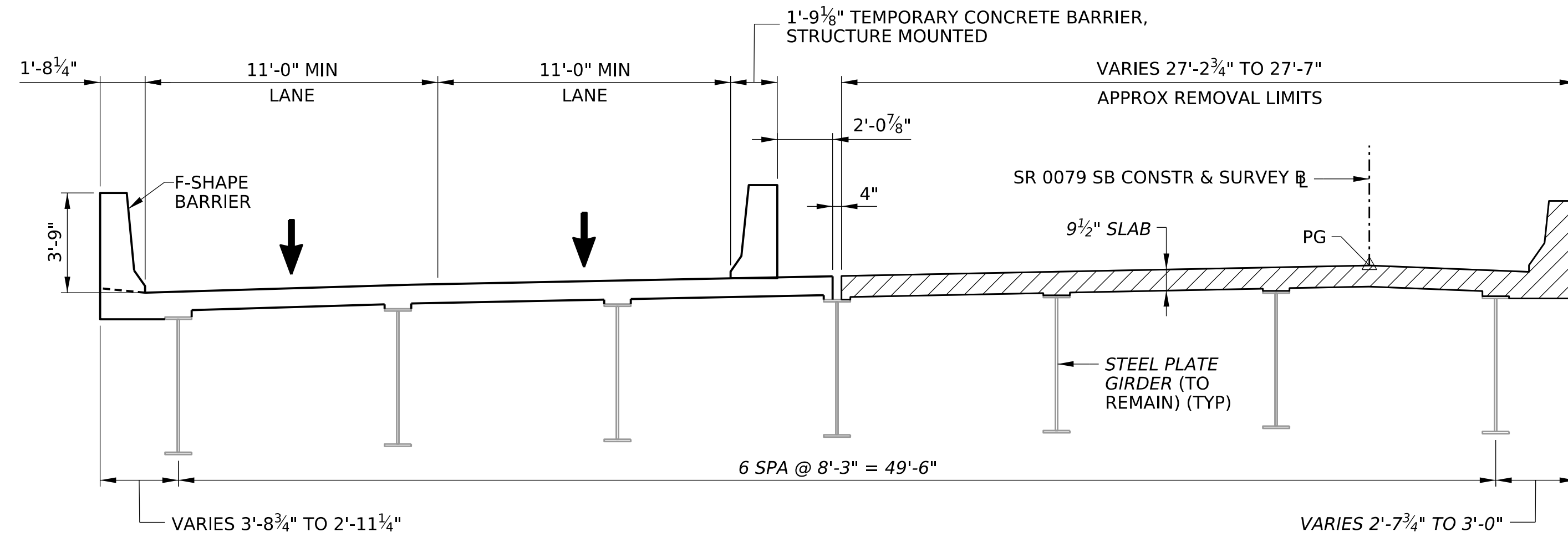
RECOMMENDED _____

SHEET 4 OF 9

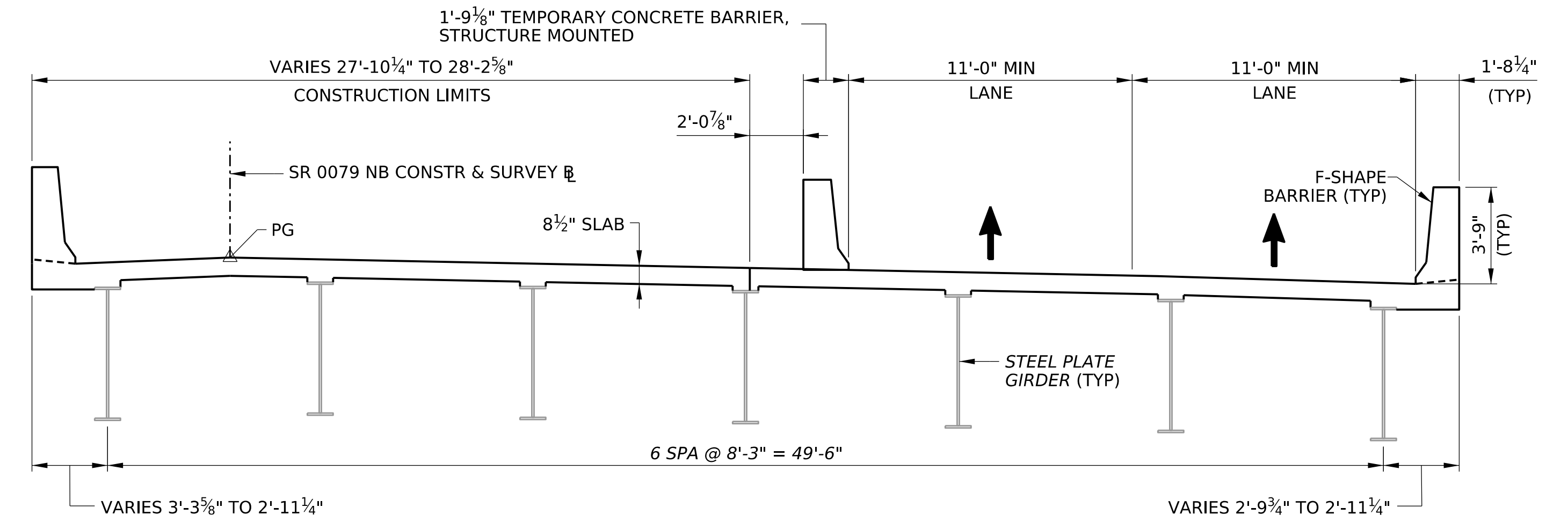
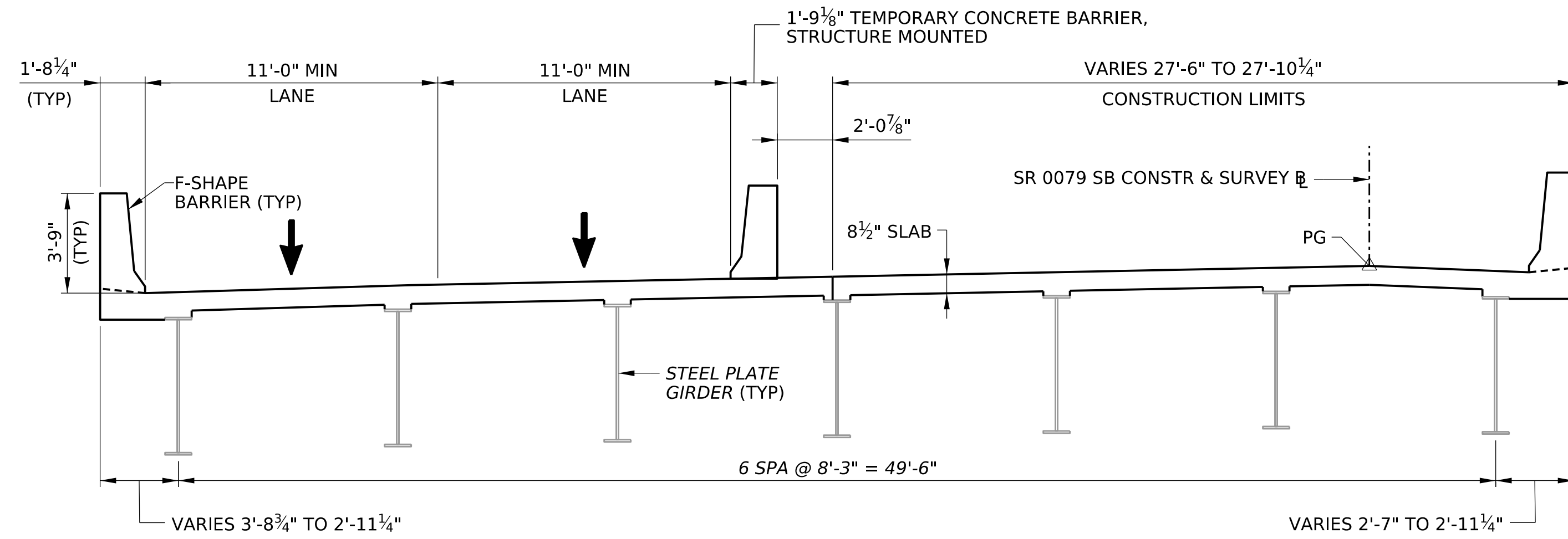
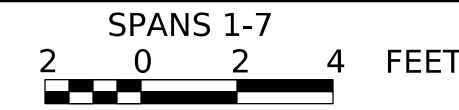
S - 42755

PLOTTED: 16-JAN-2025 20:24

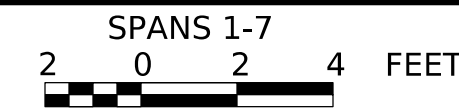
OPERATOR: FILE NAME: pw://wsp-us-pw.bentley.com/wsp-us-pw-02/Documents/PA Transportation/PennDOT/District 1-0/3090800.006_SR79/STR/TSU/Plans/79_ph02.dgn



PHASE 2 - REMOVAL



PHASE 2 - CONSTRUCTION



LEGEND:

- REMOVAL LIMITS FOR EXISTING STRUCTURE

NOTES:

- 1. PROVIDE TYPE 1 INSTALLATION AS PER BC-719M.

Mark	Description	By	Chk'd	Recm'd.	Date
REVISIONS					

S.R. 0079 PREVIOUSLY KNOWN AS L.R. 1003
 BMS STR ID: 25-0079-1824-0000 (NB) MPMS/ECMS PROJ: 115467 BRKEY: 15986 (NB)
 BMS STR ID: 25-0079-1825-0042 (SB) BRKEY: 15990 (SB)

**PRELIMINARY
NOT FOR CONSTRUCTION**

**COMMONWEALTH OF PENNSYLVANIA
DEPARTMENT OF TRANSPORTATION**

**ERIE COUNTY
S.R. 0079, SECTION B09**
 SEGMENT 1824, OFFSET 0000, S.R. 0079 NB STA 369+35.00
 SEGMENT 1825, OFFSET 0042, S.R. 0079 SB STA 369+40.00
 OVER CSX & NORFOLK SOUTHERN RAILROADS, IRWIN DRIVE,
 RUDOLPH AVENUE, AND WEST 16TH STREET
 REHABILITATION OF DUAL 12-SPAN STEEL PLATE GIRDER BRIDGES

CONSTRUCTION PHASING SECTIONS - 2

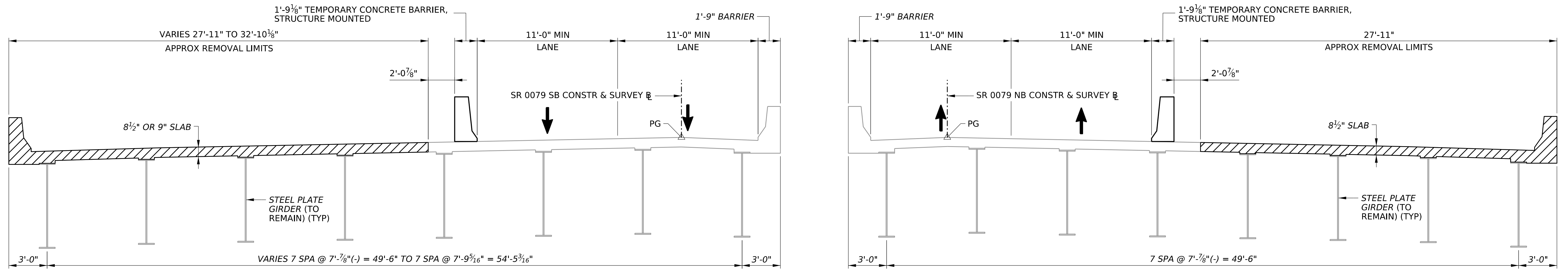
RECOMMENDED _____

SHEET 5 OF 9

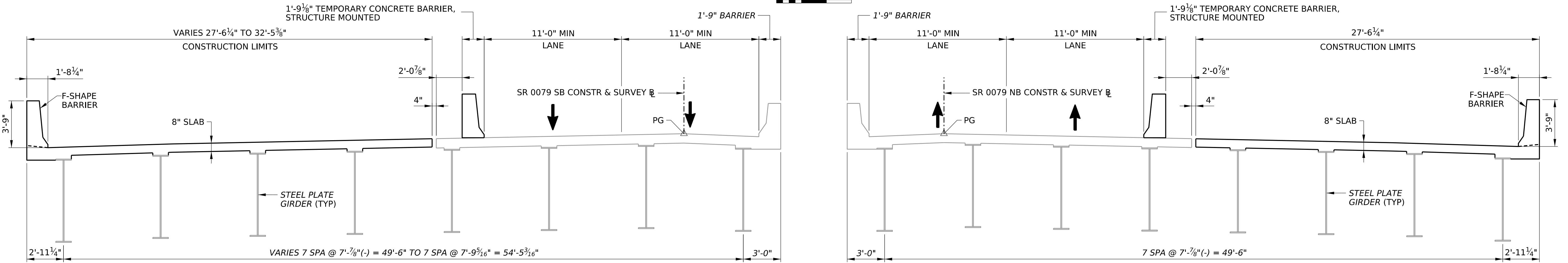
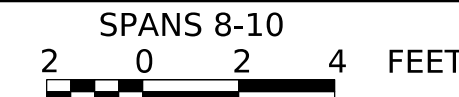
S - 42755

PLOTTED: 16-JAN-2025 20:24

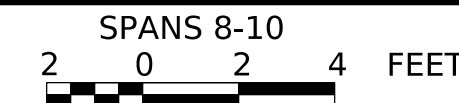
OPERATOR: FILE NAME: pw://wsp-us-pw.bentley.com:wsp-us-pw-02/Documents/PA Transportation/PennDOT/District 1-0/30900800.006_SR79/STR/TSU/Plans/79_ph03.dgn



PHASE 1 - REMOVAL



PHASE 1 - CONSTRUCTION



LEGEND:

- REMOVAL LIMITS FOR EXISTING STRUCTURE

NOTES:

- 1. PROVIDE TYPE 1 INSTALLATION AS PER BC-719M.

Mark	Description	By	Chk'd	Recm'd.	Date
REVISIONS					

S.R. 0079 PREVIOUSLY KNOWN AS L.R. 1003
 BMS STR ID: 25-0079-1824-0000 (NB) MPMS/ECMS PROJ: 115467 BRKEY: 15986 (NB)
 BMS STR ID: 25-0079-1825-0042 (SB) BRKEY: 15990 (SB)

**PRELIMINARY
NOT FOR CONSTRUCTION**

**COMMONWEALTH OF PENNSYLVANIA
DEPARTMENT OF TRANSPORTATION**

**ERIE COUNTY
S.R. 0079, SECTION B09**
 SEGMENT 1824, OFFSET 0000, S.R. 0079 NB STA 369+35.00
 SEGMENT 1825, OFFSET 0042, S.R. 0079 SB STA 369+40.00
 OVER CSX & NORFOLK SOUTHERN RAILROADS, IRWIN DRIVE,
 RUDOLPH AVENUE, AND WEST 16TH STREET
 REHABILITATION OF DUAL 12-SPAN STEEL PLATE GIRDER BRIDGES

CONSTRUCTION PHASING SECTIONS - 3

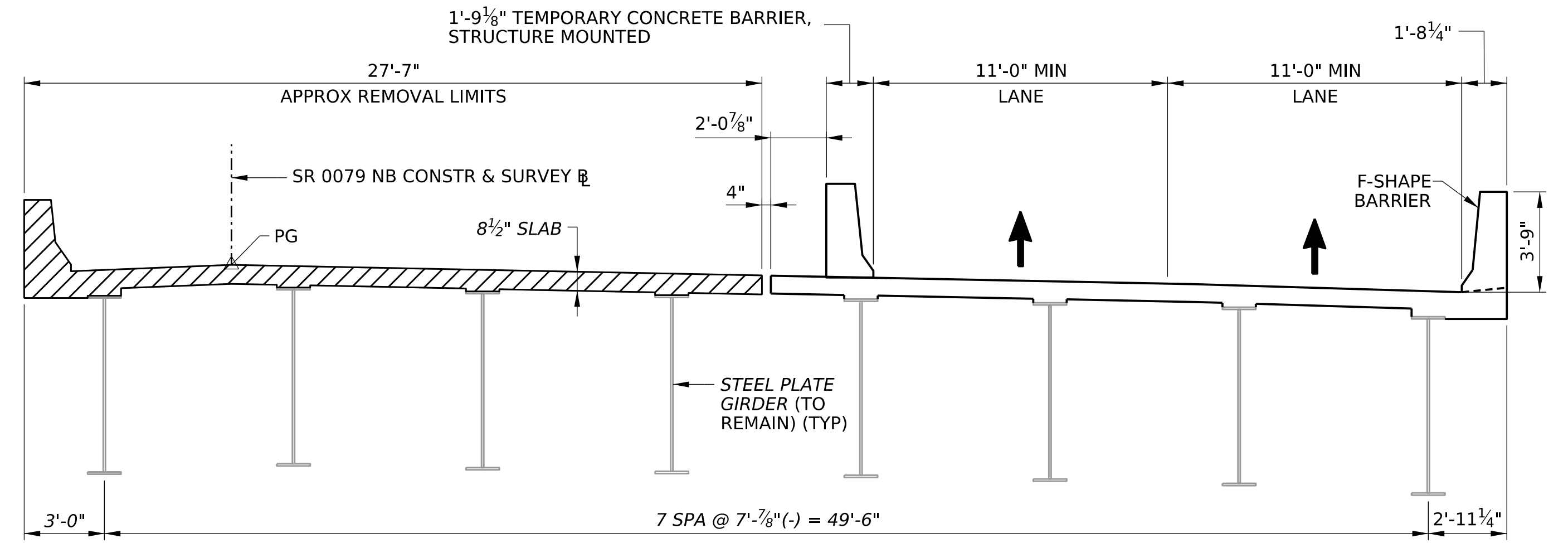
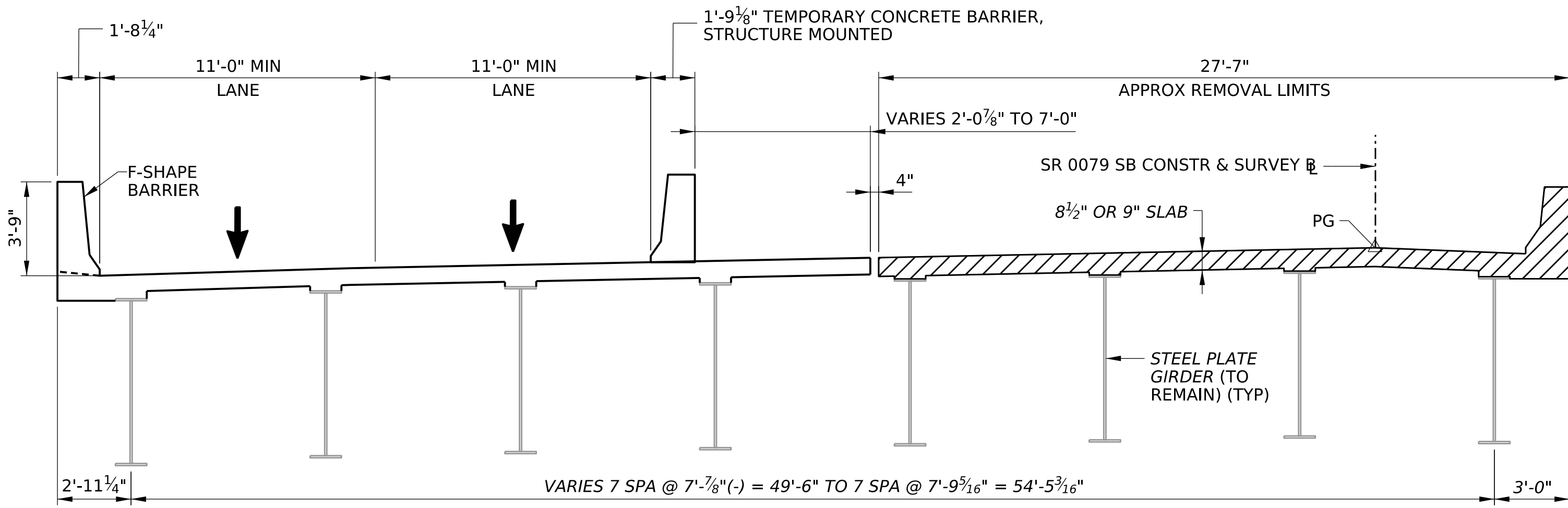
RECOMMENDED _____

SHEET 6 OF 9

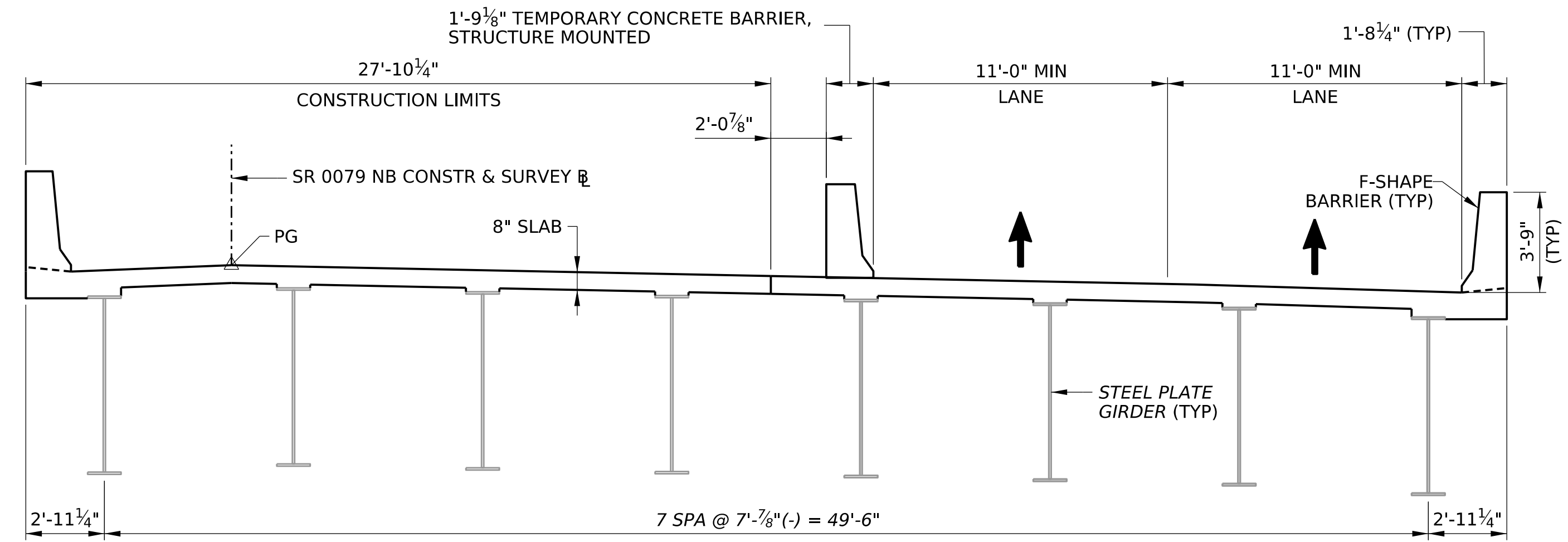
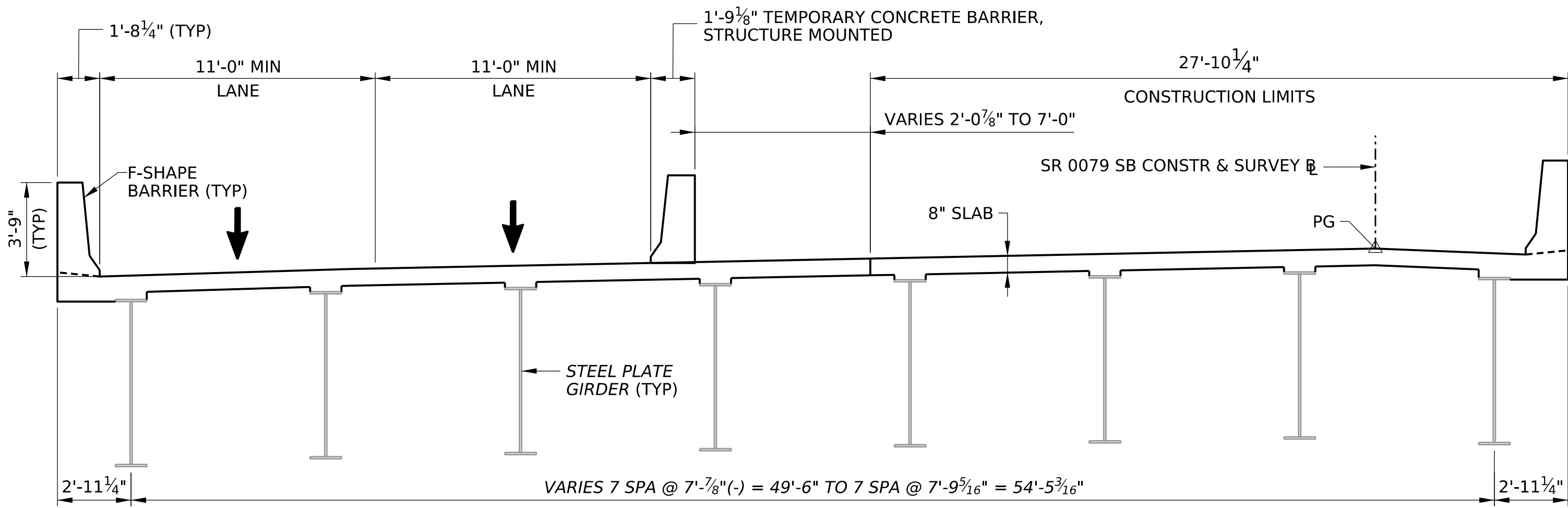
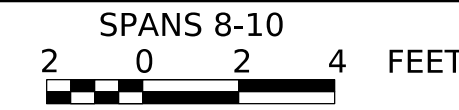
S - 42755

PLOTTED: 16-JAN-2025 20:25

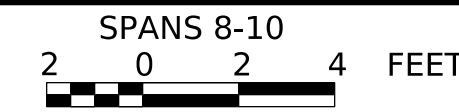
OPERATOR: FILE NAME: pw://wsp-us-pw.bentley.com/wsp-us-pw-02/Documents/PA Transportation/PennDOT/District 1-0/30900800.006_SR79/STR/TSU/Plans/79_ph04.dgn



PHASE 2 - REMOVAL



PHASE 2 - CONSTRUCTION



LEGEND:

- REMOVAL LIMITS FOR EXISTING STRUCTURE

NOTES:

- 1. PROVIDE TYPE 1 INSTALLATION AS PER BC-719M.

Mark	Description	By	Chk'd	Recm'd.	Date
REVISIONS					

S.R. 0079 PREVIOUSLY KNOWN AS L.R. 1003
 BMS STR ID: 25-0079-1824-0000 (NB) MPMS/ECMS PROJ: 115467 BRKEY: 15986 (NB)
 BMS STR ID: 25-0079-1825-0042 (SB) BRKEY: 15990 (SB)

**PRELIMINARY
 NOT FOR CONSTRUCTION**

**COMMONWEALTH OF PENNSYLVANIA
 DEPARTMENT OF TRANSPORTATION**

**ERIE COUNTY
 S.R. 0079, SECTION B09**
 SEGMENT 1824, OFFSET 0000, S.R. 0079 NB STA 369+35.00
 SEGMENT 1825, OFFSET 0042, S.R. 0079 SB STA 369+40.00
 OVER CSX & NORFOLK SOUTHERN RAILROADS, IRWIN DRIVE,
 RUDOLPH AVENUE, AND WEST 16TH STREET
 REHABILITATION OF DUAL 12-SPAN STEEL PLATE GIRDER BRIDGES

CONSTRUCTION PHASING SECTIONS - 4

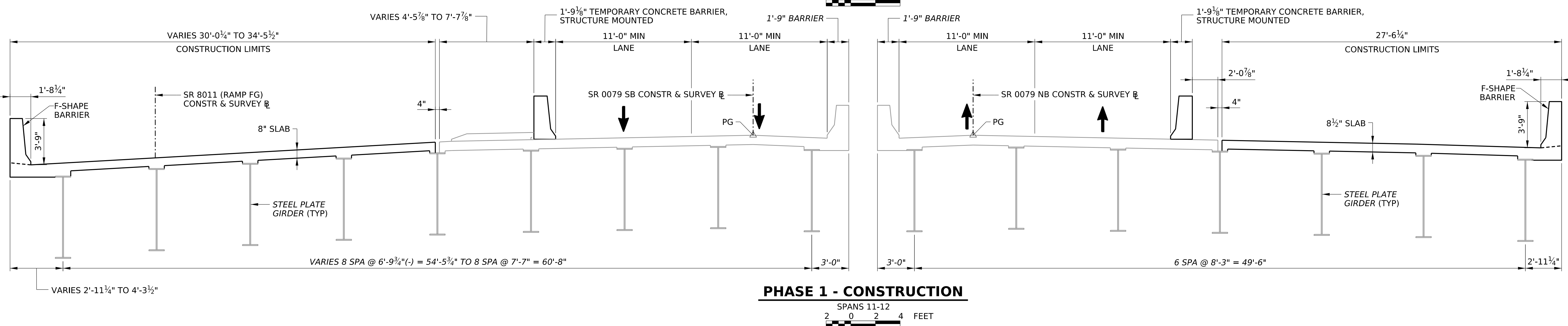
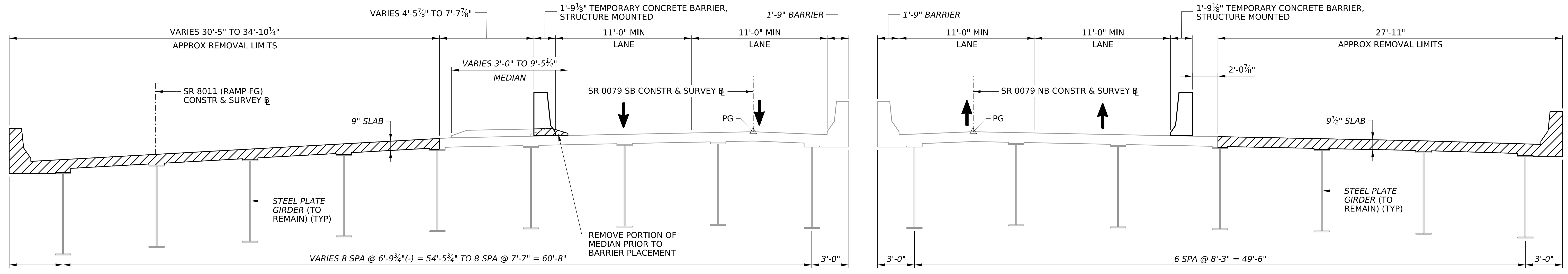
RECOMMENDED _____

SHEET 7 OF 9

S - 42755

PLOTTED: 16-JAN-2025 20:25

OPERATOR: FILE NAME: pw://wsp-us-pw.bentley.com/wsp-us-pw-02/Documents/PA Transportation/PennDOT/District 1-0/30900800.006_SR79/STR/TSU/Plans/79_ph05.dgn



LEGEND:

- REMOVAL LIMITS FOR EXISTING STRUCTURE

NOTES:

- 1. PROVIDE TYPE 1 INSTALLATION AS PER BC-719M.

Mark	Description	By	Chk'd	Recm'd.	Date
REVISIONS					

S.R. 0079 PREVIOUSLY KNOWN AS L.R. 1003
 BMS STR ID: 25-0079-1824-0000 (NB) MPMS/ECMS PROJ: 115467 BRKEY: 15986 (NB)
 BMS STR ID: 25-0079-1825-0042 (SB) BRKEY: 15990 (SB)

**PRELIMINARY
NOT FOR CONSTRUCTION**

**COMMONWEALTH OF PENNSYLVANIA
DEPARTMENT OF TRANSPORTATION**

**ERIE COUNTY
S.R. 0079, SECTION B09**

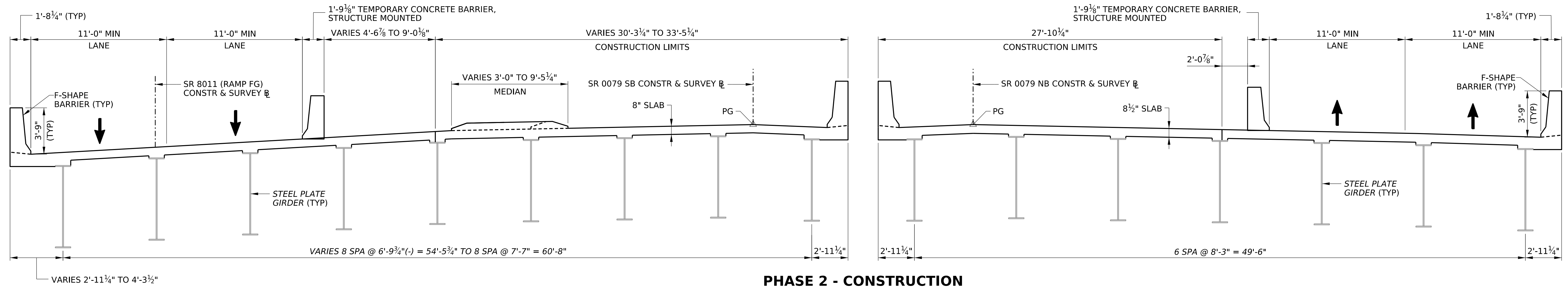
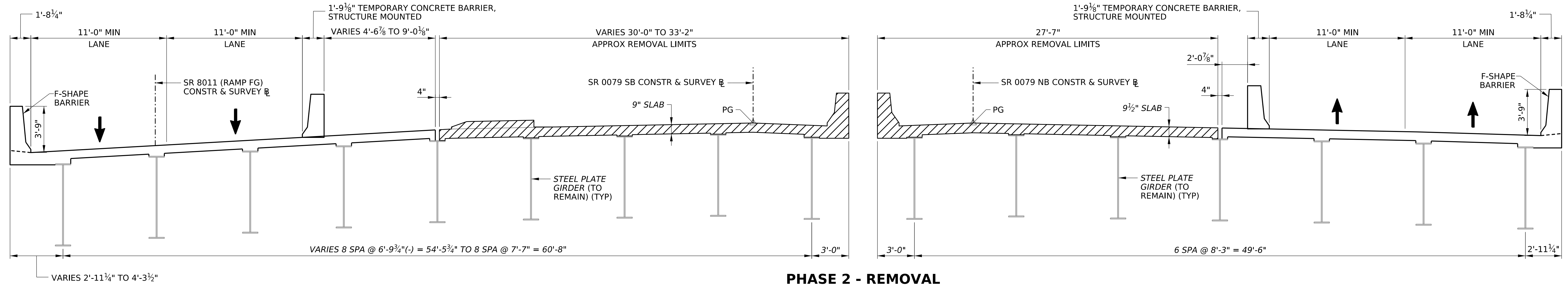
SEGMENT 1824, OFFSET 0000, S.R. 0079 NB STA 369+35.00
 SEGMENT 1825, OFFSET 0042, S.R. 0079 SB STA 369+40.00
 OVER CSX & NORFOLK SOUTHERN RAILROADS, IRWIN DRIVE,
 RUDOLPH AVENUE, AND WEST 16TH STREET
 REHABILITATION OF DUAL 12-SPAN STEEL PLATE GIRDER BRIDGES

CONSTRUCTION PHASING SECTIONS - 5

RECOMMENDED _____	SHEET <u>8</u> OF <u>9</u>
S - 42755	

PLOTTED: 16-JAN-2025 20:25

OPERATOR: FILE NAME: pw://wsp-us-pw.bentley.com:wsp-us-pw-02/Documents/PA Transportation/PennDOT/District 1-0/30900800.006_SR79/STR/TSU/Plans/79_ph06.dgn



LEGEND:

- REMOVAL LIMITS FOR EXISTING STRUCTURE

NOTES:

1. PROVIDE TYPE 1 INSTALLATION AS PER BC-719M.

Mark	Description	By	Chk'd	Recm'd.	Date
REVISIONS					

S.R. 0079 PREVIOUSLY KNOWN AS L.R. 1003
 BMS STR ID: 25-0079-1824-0000 (NB) MPMS/ECMS PROJ: 115467 BRKEY: 15986 (NB)
 BMS STR ID: 25-0079-1825-0042 (SB) BRKEY: 15990 (SB)

**PRELIMINARY
NOT FOR CONSTRUCTION**

**COMMONWEALTH OF PENNSYLVANIA
DEPARTMENT OF TRANSPORTATION**

**ERIE COUNTY
S.R. 0079, SECTION B09**
 SEGMENT 1824, OFFSET 0000, S.R. 0079 NB STA 369+35.00
 SEGMENT 1825, OFFSET 0042, S.R. 0079 SB STA 369+40.00
 OVER CSX & NORFOLK SOUTHERN RAILROADS, IRWIN DRIVE,
 RUDOLPH AVENUE, AND WEST 16TH STREET
 REHABILITATION OF DUAL 12-SPAN STEEL PLATE GIRDER BRIDGES

CONSTRUCTION PHASING SECTIONS - 6

RECOMMENDED _____

SHEET 9 OF 9

S - 42755