

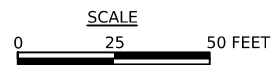
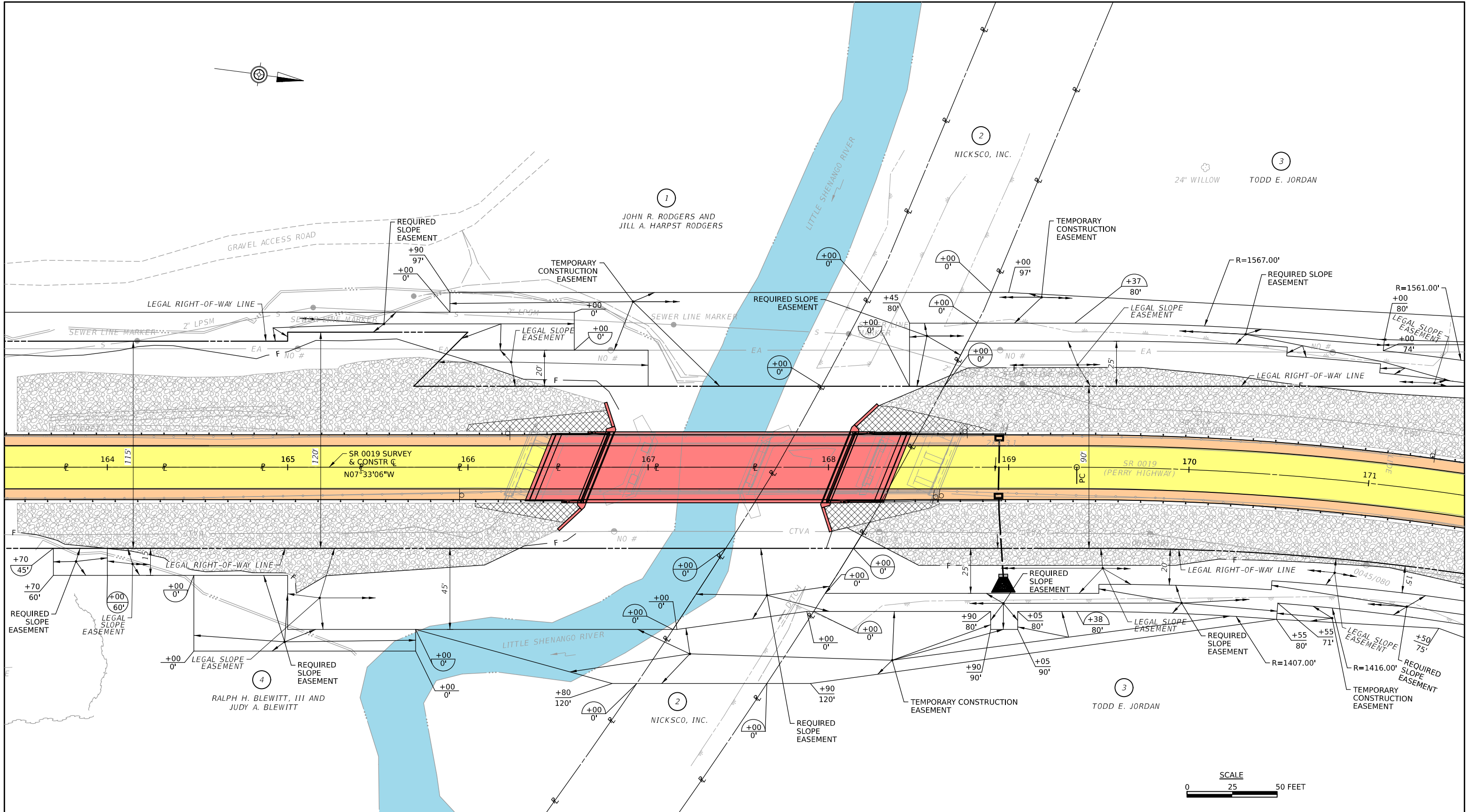
LEGEND

- Proposed Roadway
- Proposed Shoulder
- Mill & Overlay
- Driveway Adjustment
- Guiderail

**SR 0019 SECTION B19
OVER LITTLE SHENANGO RIVER
APPROACH ROADWAYS**

PLAN VIEW

DATE: OCTOBER 2024	FIGURE 1
--------------------	----------



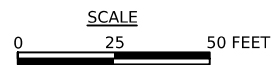
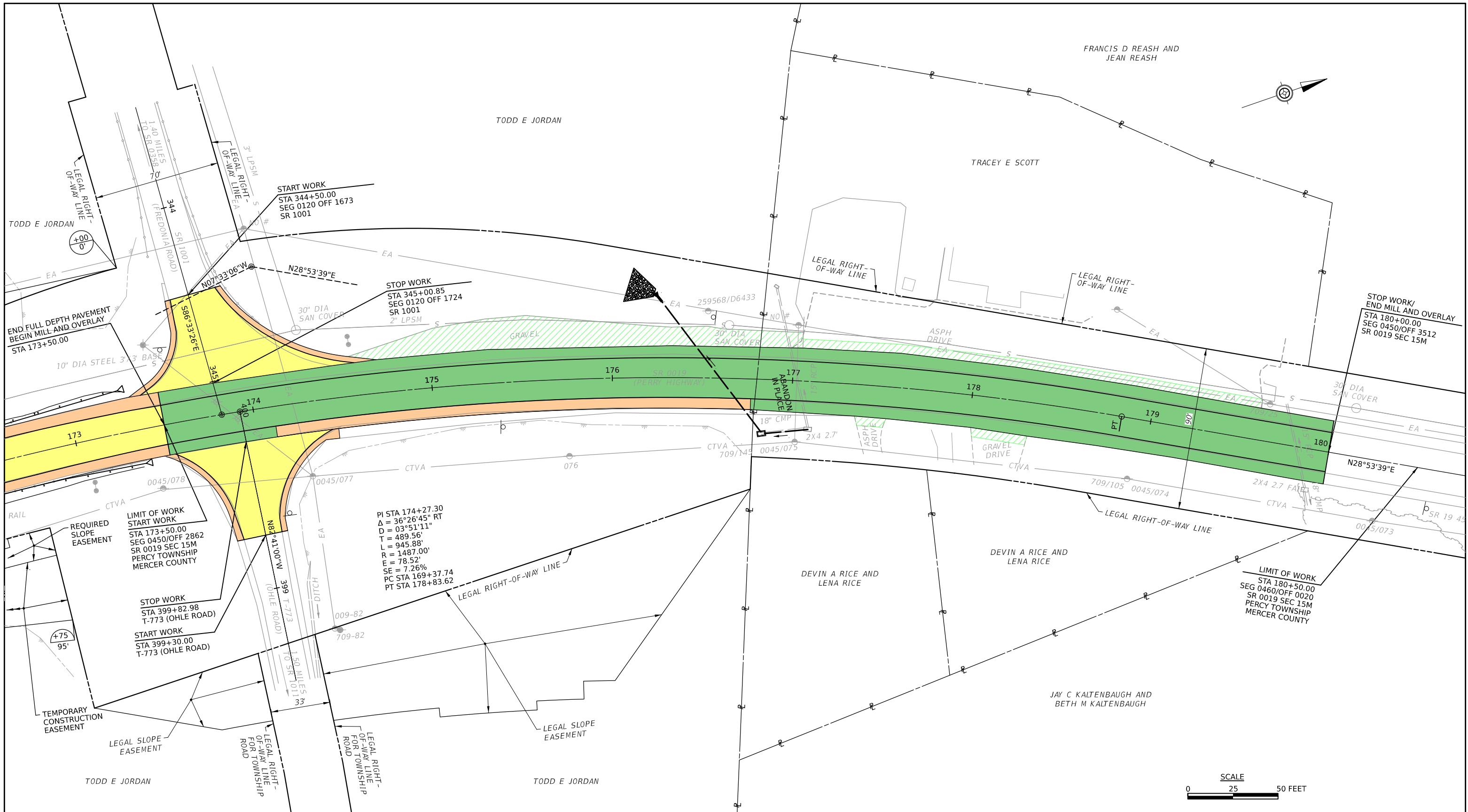
LEGEND	
	Proposed Roadway
	Proposed Shoulder
	Proposed Structure
	Watercourse
	R-Rock Fill
	Geosynthetic Reinforced Soil (GRS) Slope, Type A
	Guideraill

**SR 0019 SECTION B19
OVER LITTLE SHENANGO RIVER
BRIDGE REPLACEMENT PROJECT**

PLAN VIEW

DATE: OCTOBER 2024	FIGURE 2
--------------------	----------



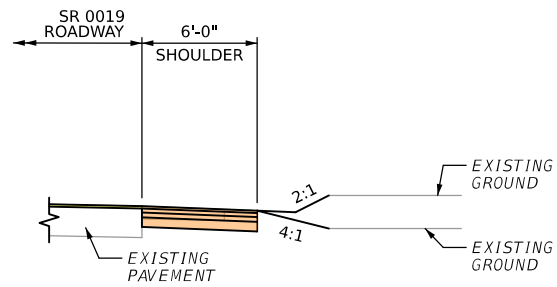


LEGEND	
	Proposed Roadway
	Proposed Shoulder
	Mill & Overlay
	Driveway Adjustment
	Guiderail

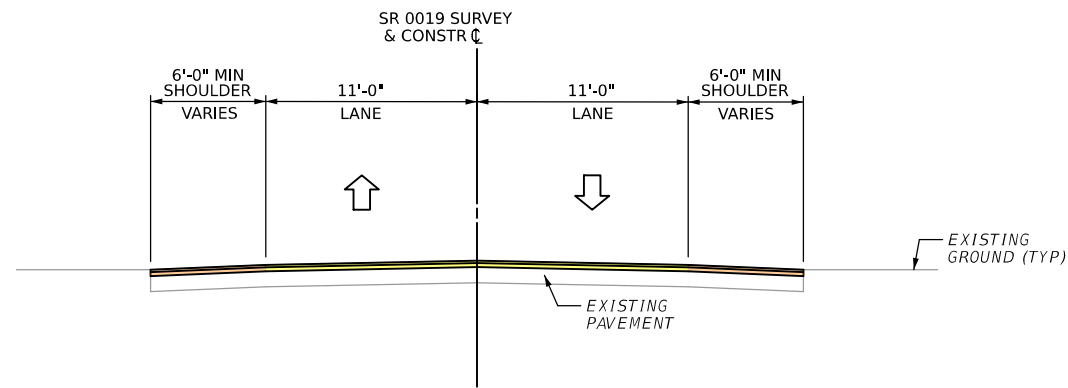
**SR 0019 SECTION B19
OVER LITTLE SHENANGO RIVER
APPROACH ROADWAYS**

PLAN VIEW

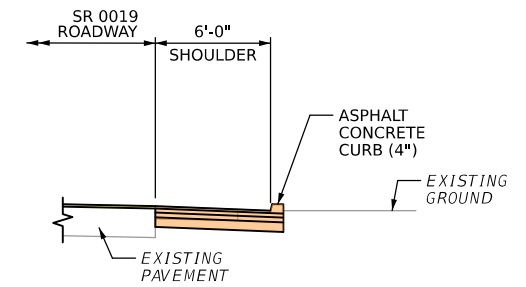
DATE: OCTOBER 2024	FIGURE 3
--------------------	----------



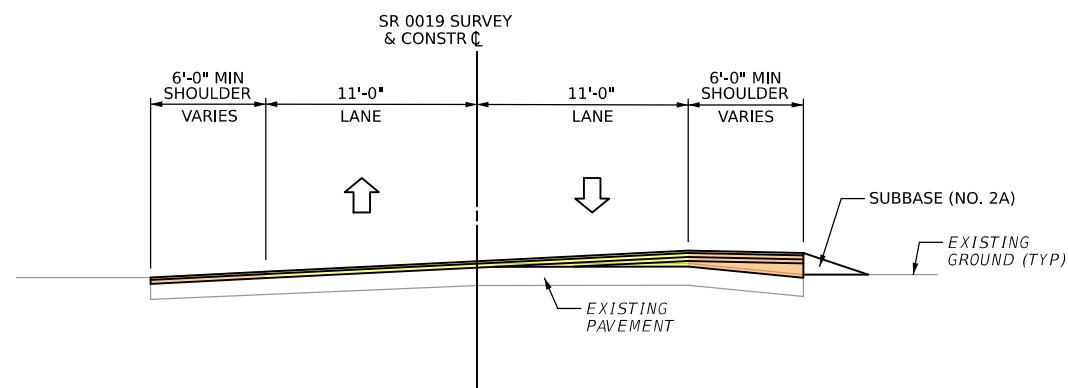
SHOULDER RECONSTRUCTION DETAIL (LT AND RT)
NOT TO SCALE



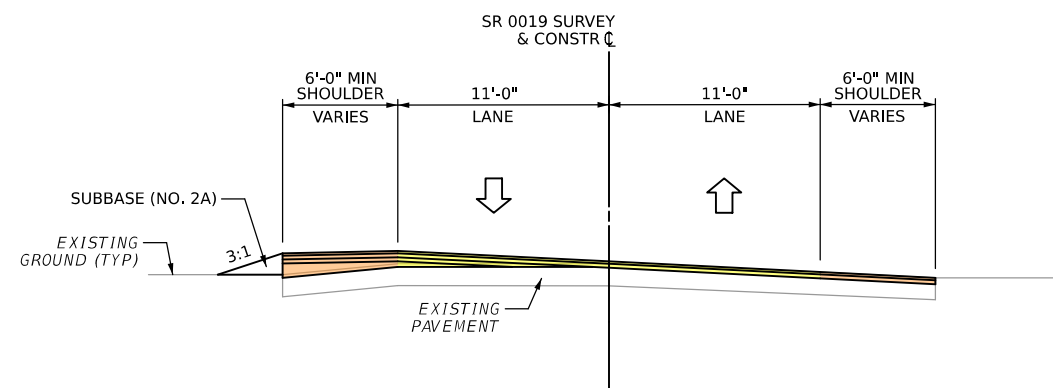
TYPICAL SECTION
NOT TO SCALE



SHOULDER RECONSTRUCTION WITH CURB DETAIL
NOT TO SCALE



TYPICAL SECTION - MILL AND OVERLAY
NOT TO SCALE



TYPICAL SECTION - MILL AND OVERLAY
NOT TO SCALE

- LEGEND**
- Proposed Roadway
 - Proposed Shoulder
 - Direction of Traffic

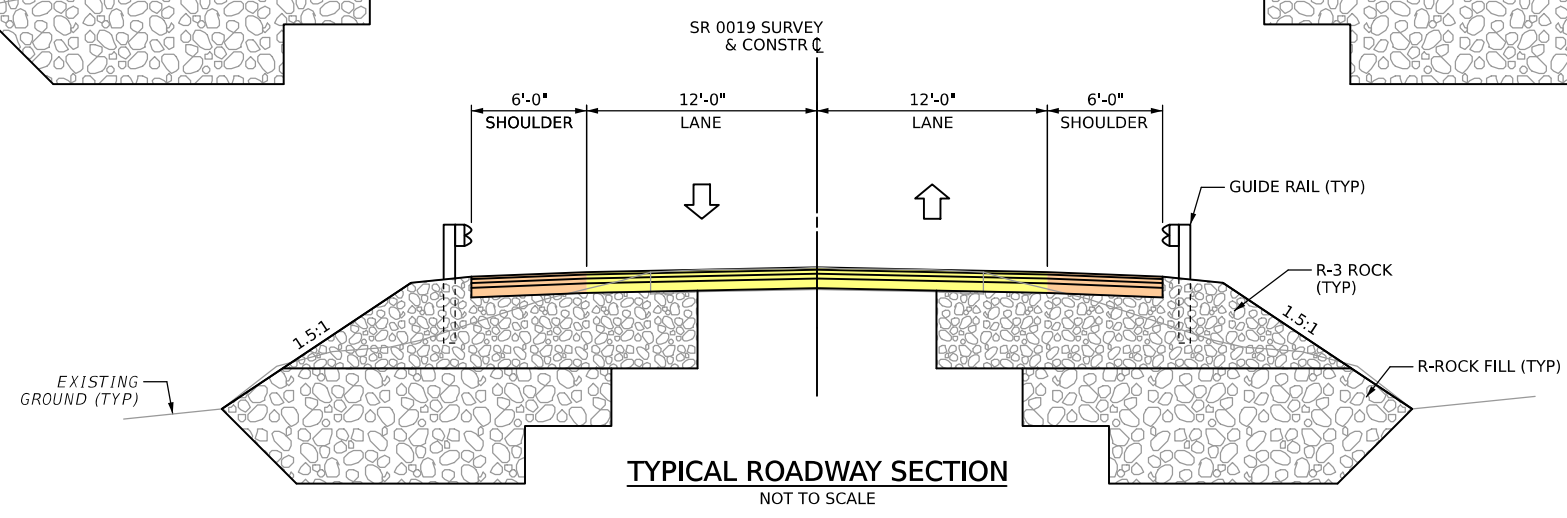
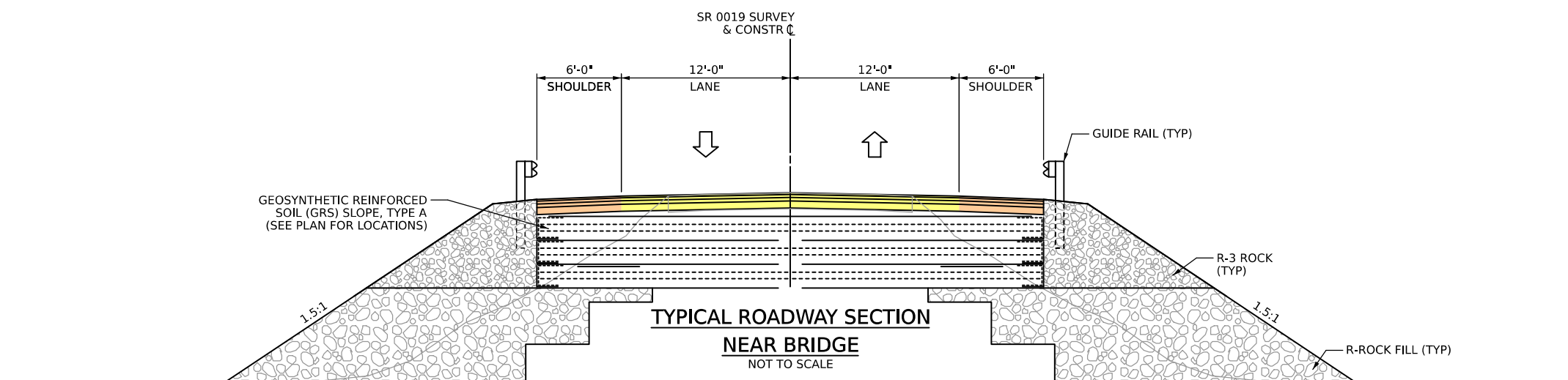
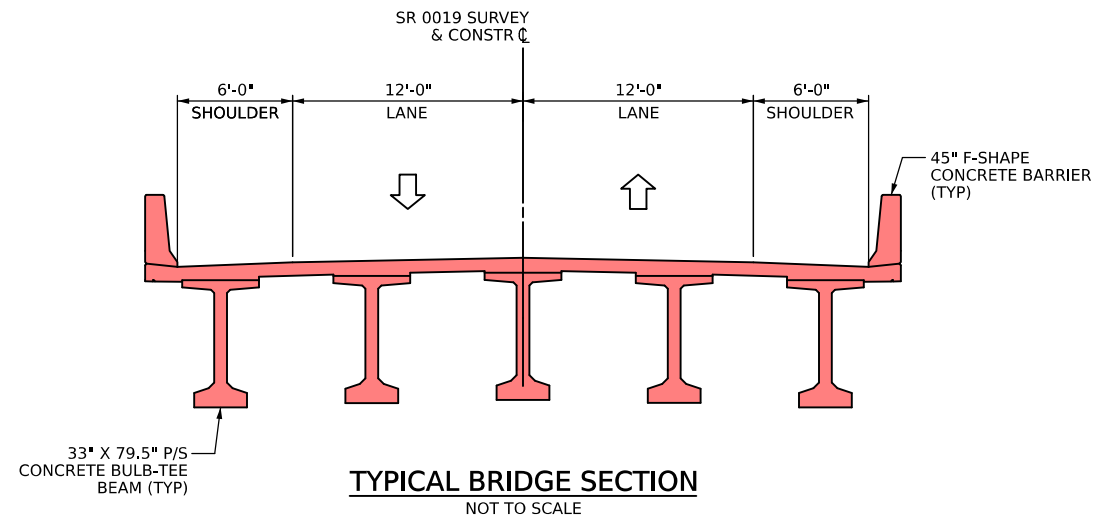


**SR 0019 SECTION B19
OVER LITTLE SHENANGO RIVER
APPROACH ROADWAYS**

TYPICAL SECTIONS

DATE: OCTOBER 2024

FIGURE 4



- LEGEND**
- Proposed Roadway
 - Proposed Shoulder
 - Proposed Structure
 - Direction of Traffic

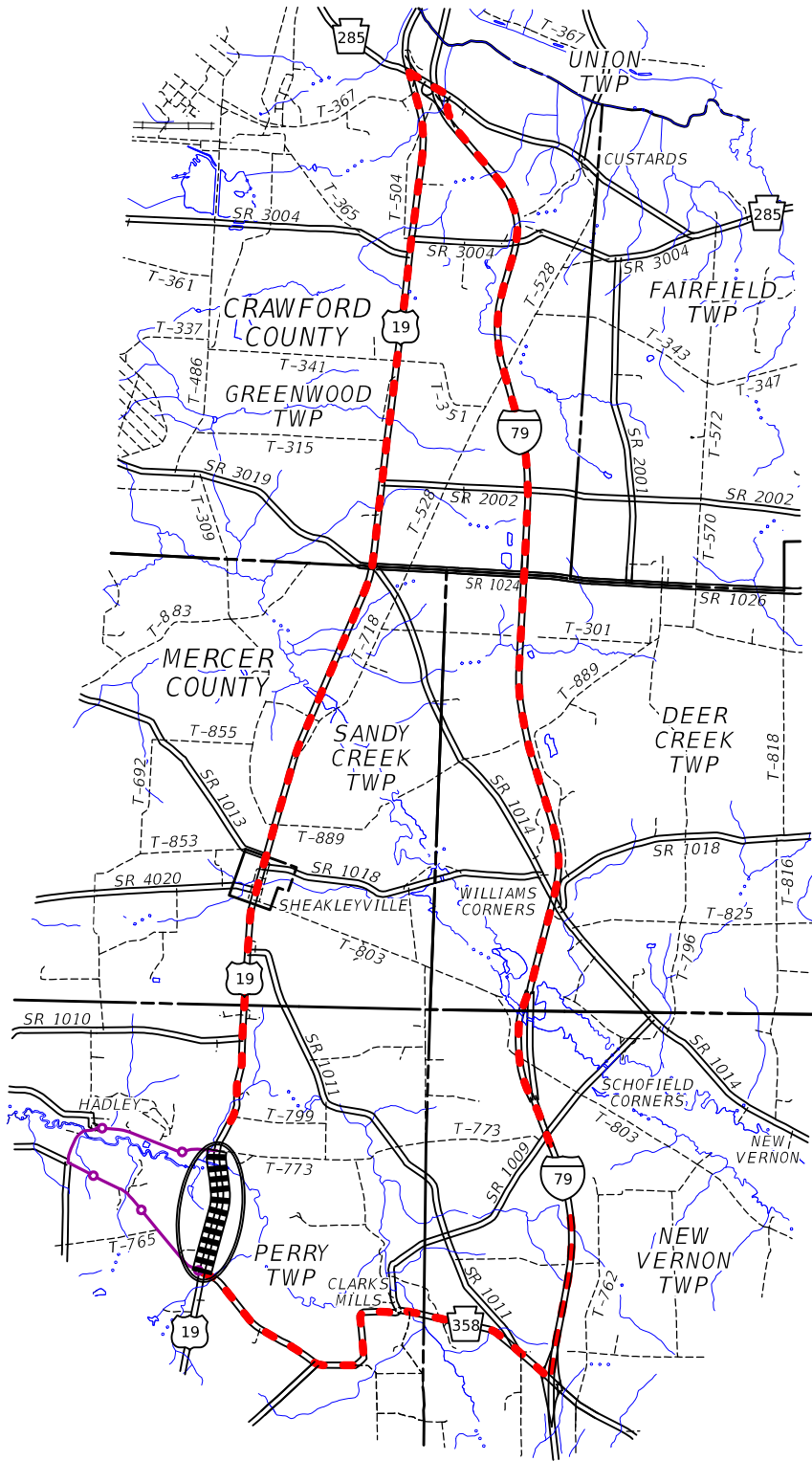
**SR 0019 SECTION B19
OVER LITTLE SHENANGO RIVER
BRIDGE REPLACEMENT PROJECT**

TYPICAL SECTIONS








DATE: OCTOBER 2024

FIGURE 5





LEGEND

-  Project Location
-  Detour Route
-  Bicycle Detour Route
-  State Road
-  Local Road
-  Stream
-  Municipal Boundary

NOTES

Detour Length = 24.5 Miles
Bike Detour Length = 2.9 Miles

SCALE

Scale in Feet

0 8,000 16,000

**SR 0019 SECTION B19
OVER LITTLE SHENANGO RIVER
BRIDGE REPLACEMENT PROJECT**

DETOUR MAP

DATE: OCTOBER 2024

FIGURE 6

