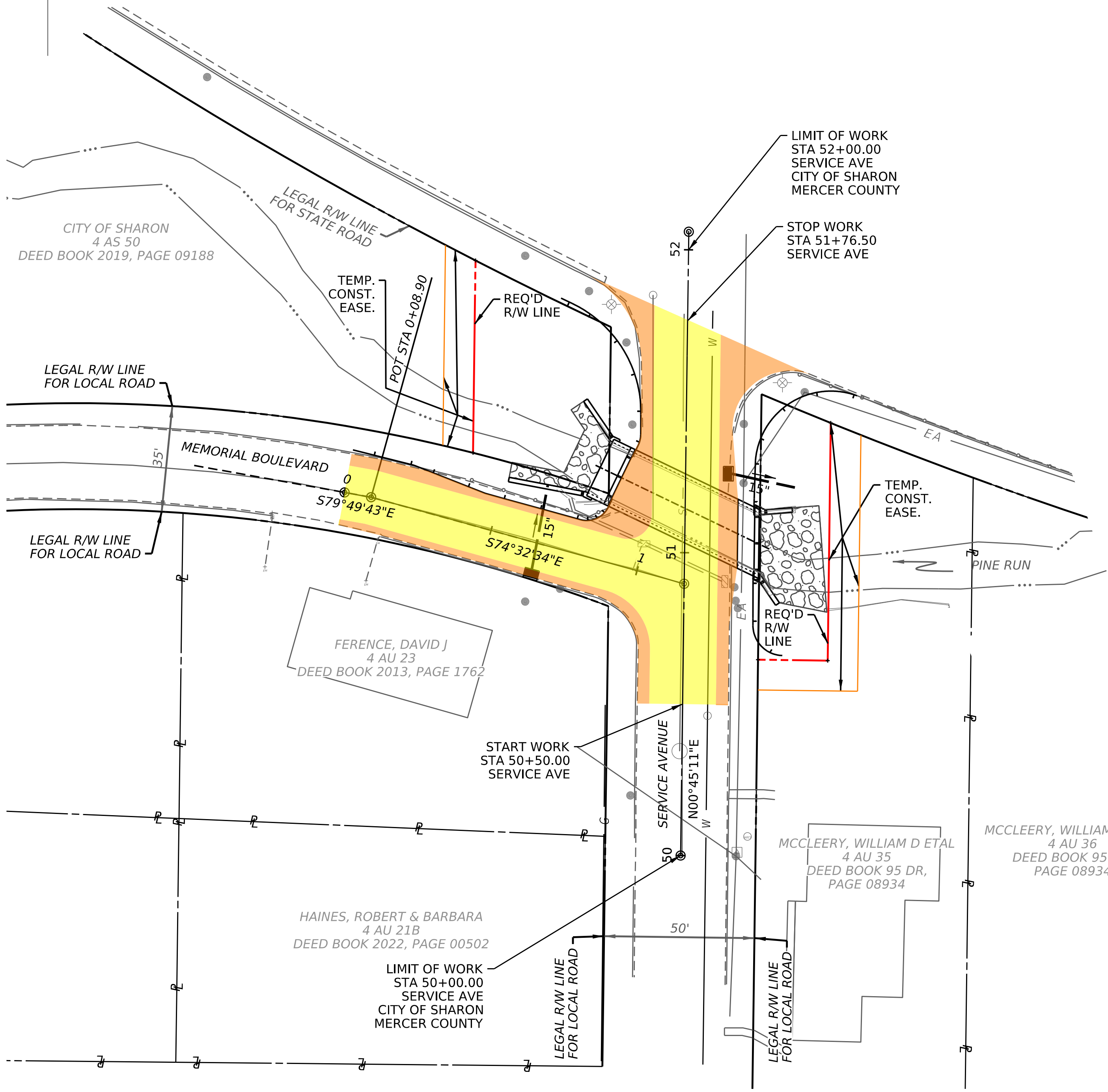
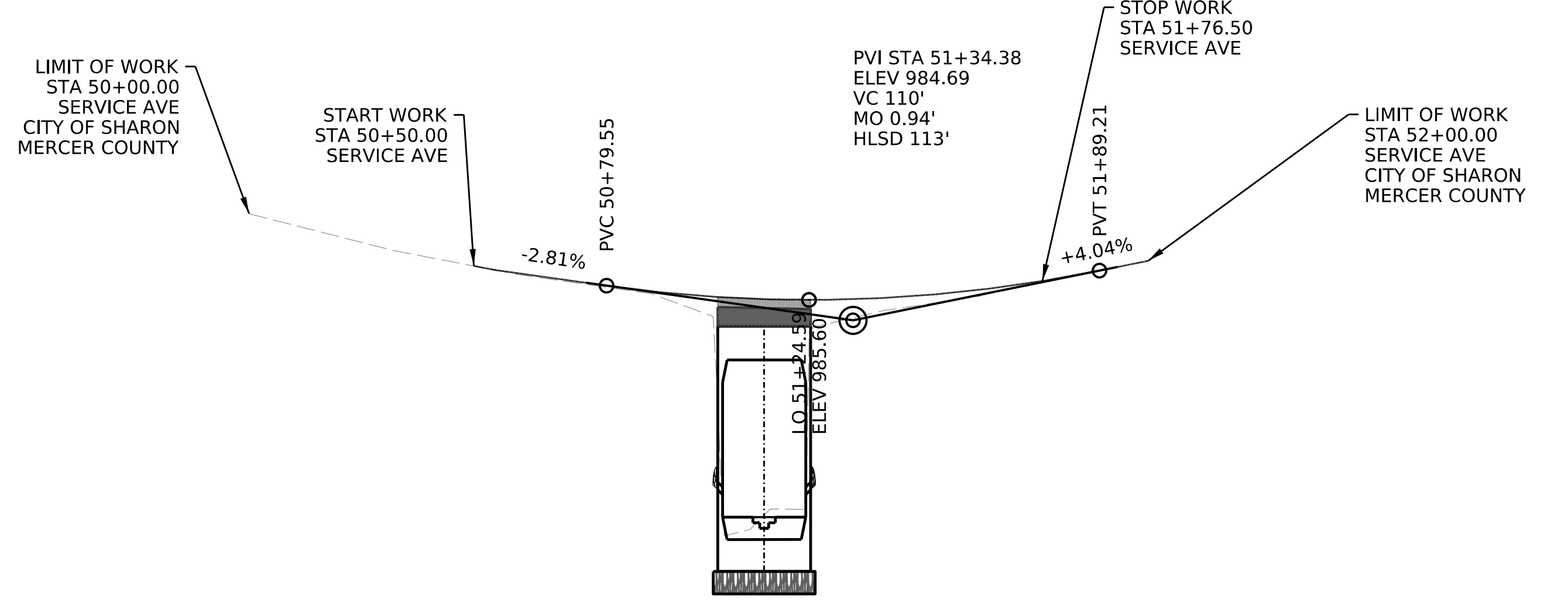
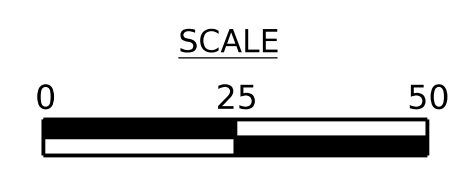


PRELIMINARY NOT FOR CONSTRUCTION

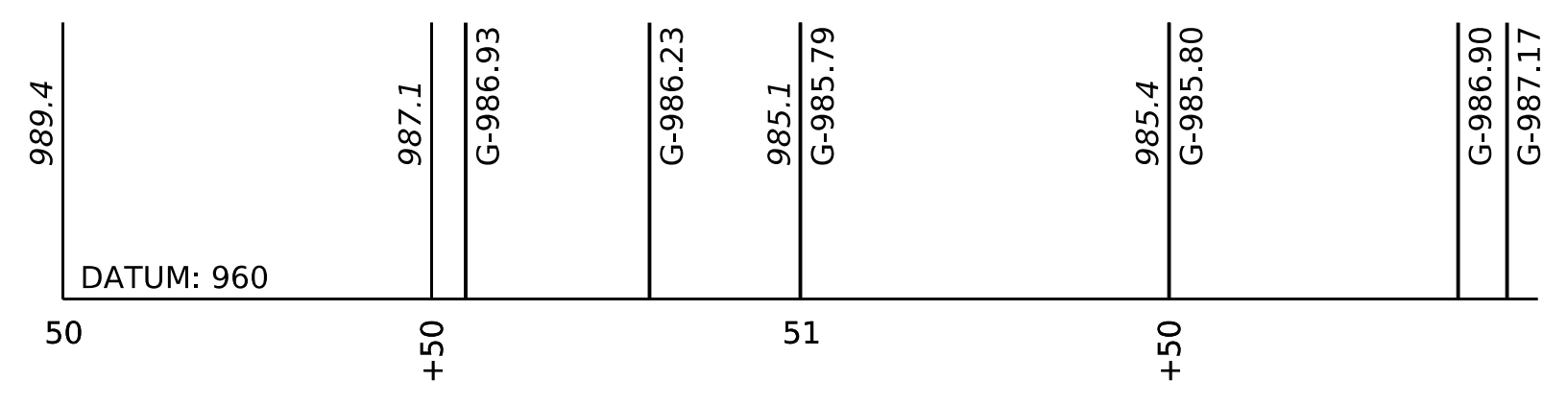
DISTRICT	COUNTY	ROUTE	SECTION	SHEET
1-0	MERCER	7302		1 OF 1
CITY OF SHARON				
REV NO	REVISIONS	DATE	BY	APPD



PLAN



PROFILE



SCALE

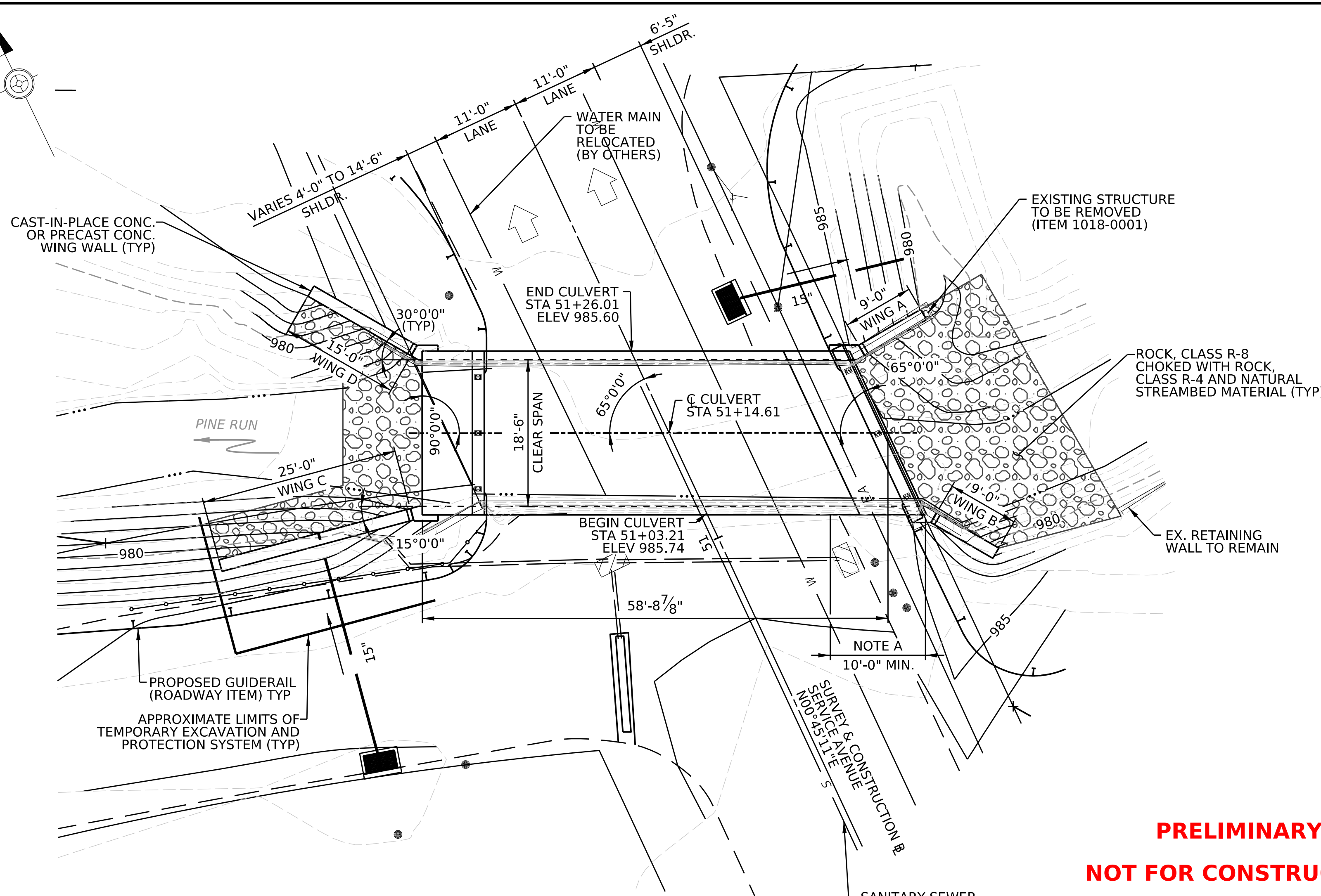


LEGEND

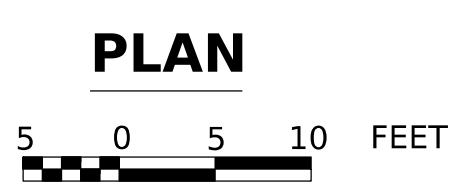
- PROPOSED ROADWAY
- PROPOSED SHOULDER

SERVICE AVENUE BRIDGE REPLACEMENT

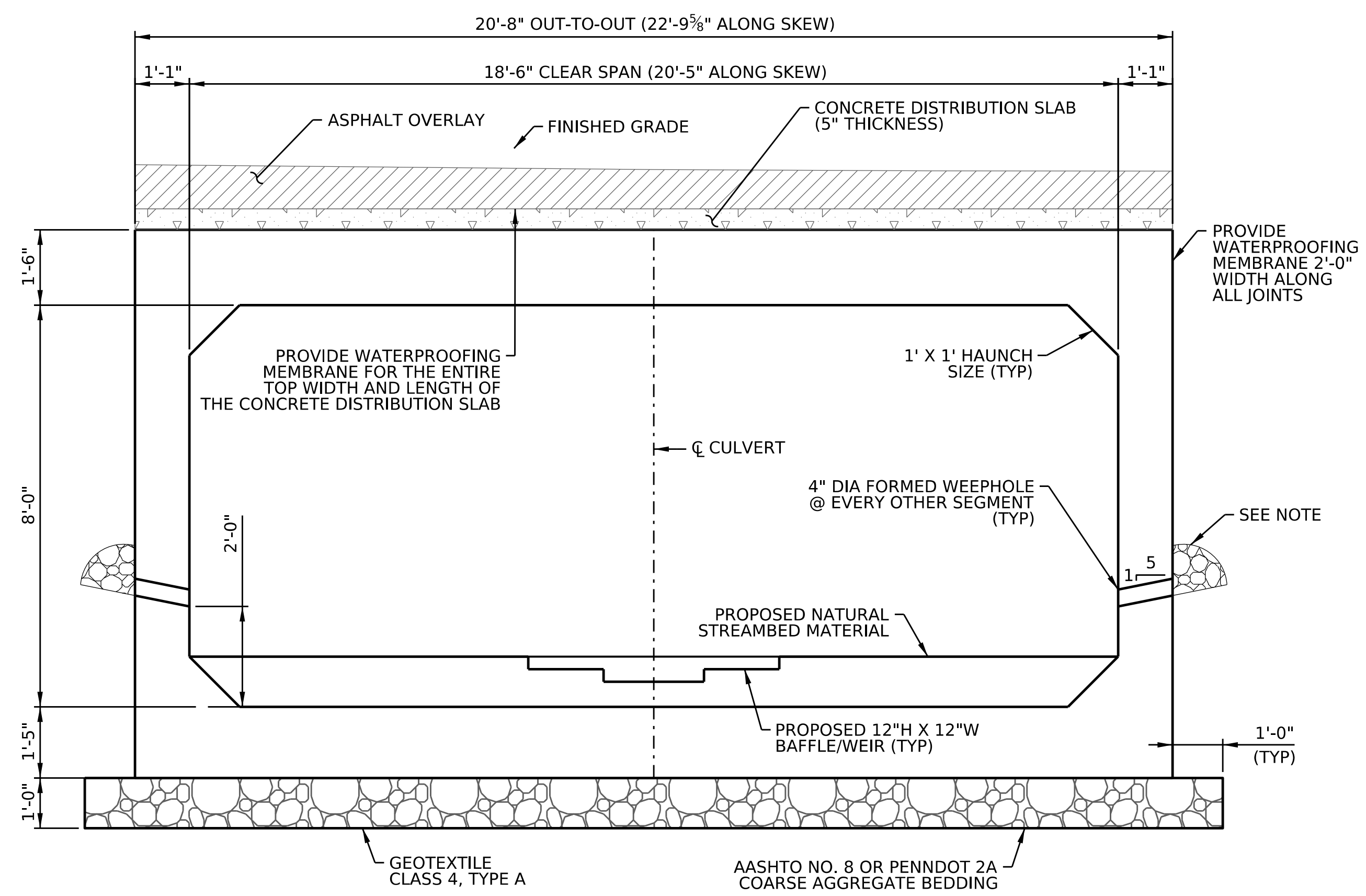
PLAN SHEET



NOTE A: SPECIAL BACKFILL IN THIS AREA (FROM END OF WING TO 10' FROM END OF BOX) MUST CONSIST OF COMPACTED NO. 2A COARSE AGGREGATE OR FLOWABLE BACKFILL, TYPE B, TYPICAL EACH SIDE AT INLET OF STRUCTURE)



**PRELIMINARY
NOT FOR CONSTRUCTION**



TYPICAL BOX SECTION



NOTE: 1/2 CUBIC YARD OF NO. 57 COARSE AGGREGATE AT EACH 4" WEEPHOLE ENCASED WITH CLASS 1 GEOTEXTILE (TYP)

HYDRAULIC DATA

DRAINAGE AREA: 1.52 SQ. MILES

DESIGN FLOOD: 10 YEAR
MAGNITUDE = 680 CFS
WATER ELEV. = 982.12 FT
VELOCITY = 5.36 FPS

100 YEAR FLOOD:
MAGNITUDE = 1,015 CFS
WATER ELEV. = 984.02 FT
VELOCITY = 5.65 FPS

VERTICAL CURVE DATA

PVI STA 51+34.38
ELEV 984.69
LENGTH 110'
MO 0.9388'

HORIZONTAL CURVE DATA

ON TANGENT

LEGEND

- EXISTING EDGE OF STREAM
- 980 - EXISTING CONTOUR LINE
- - - PROPOSED MINOR CONTOUR
- 980 - PROPOSED MAJOR CONTOUR
- EXISTING SIGN

Mark	Description	By	Chk'd	Recm'd.	Date
REVISIONS					

BMS STR ID: 43 7302 8813 2339 MPMS NO: 1884 BRKEY: 26316

**MERCER COUNTY, PENNSYLVANIA
DEPARTMENT OF BRIDGES**

**BRIDGE NO. 2339
CITY OF SHARON**

SERVICE AVENUE
OVER PINE RUN
18'-6" SPAN X 8'-0" RISE
PRECAST CONCRETE BOX CULVERT

CONCEPTUAL GENERAL PLAN & ELEVATION

RECOMMENDED _____

SHEET 1 OF 1

BRIDGE ENGINEER _____

PREPARED BY
HERBERT, ROWLAND AND GRUBIC INC.
220 WEST KENSINGER DRIVE, SUITE 100
CRANBERRY TOWNSHIP,
PENNSYLVANIA 16066