

VIRTUAL PUBLIC PLANS DISPLAY

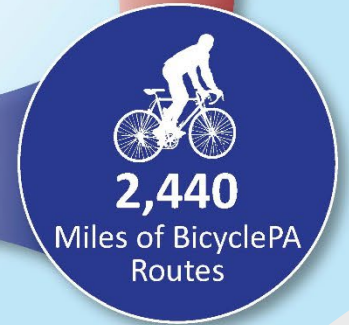
BOYD RUN CULVERT REHABILITATION

SR 0080 SECTION 366

BEAVER TOWNSHIP, CLARION COUNTY



PENNDOT BY THE NUMBERS

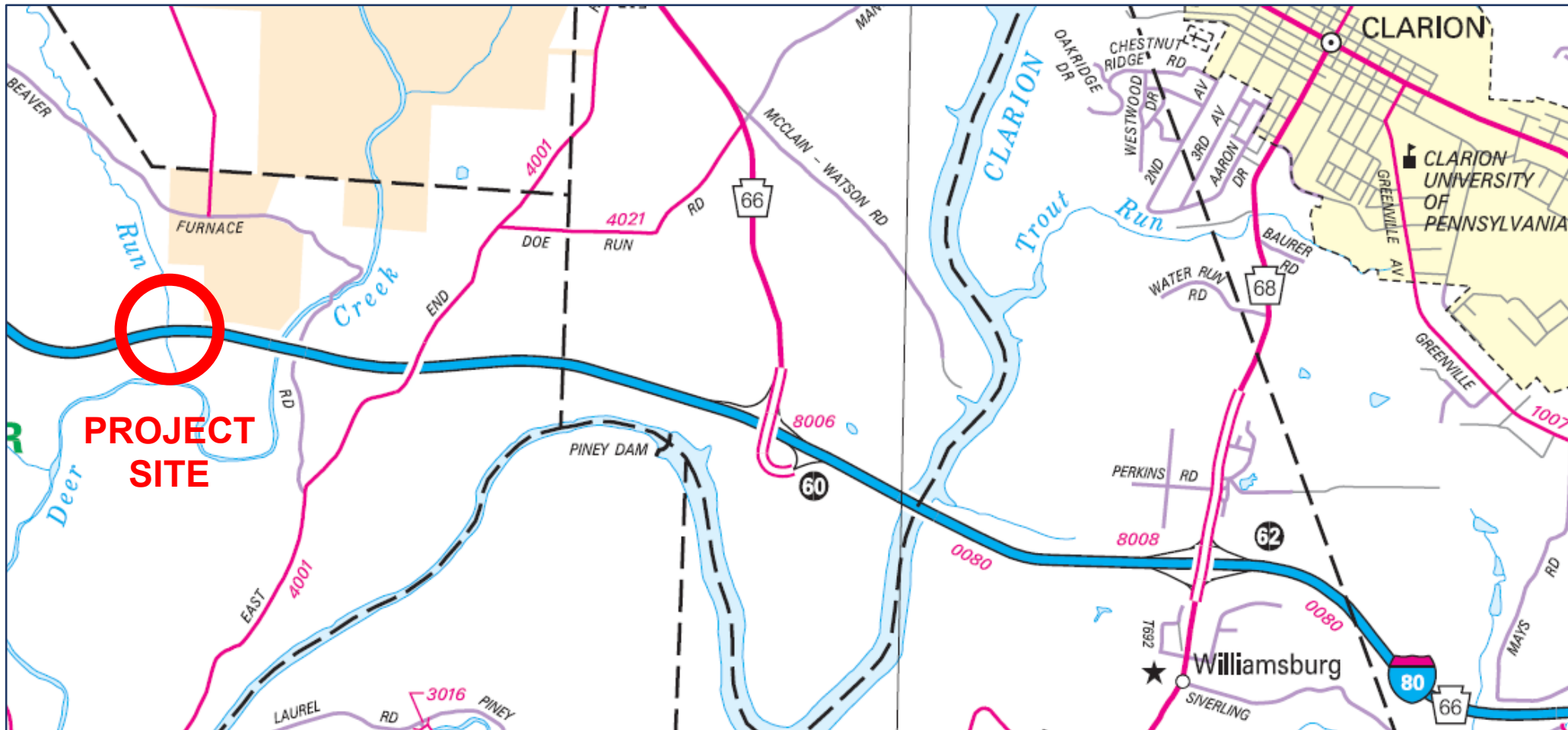


*Total miles on all PA roadways



PROJECT LOCATION

The culvert is located near I-80 Milepost 58; 4 miles west of the Clarion interchange



CULVERT DESCRIPTION

Key Boyd Run Culvert Statistics:

- Constructed in 1965
- Reinforced Concrete Arch Culvert
 - 16' Span
 - 11'-6" Rise (as-designed)
- Approximately 780' long with 50' drop in elevation (upstream to downstream)

- 3 Sq. Mi. Drainage Area
 - 6.65% Average Streambed Slope
 - Under 140'-180' of Embankment Material – Not Visible From I-80
- (For comparison, the Clarion County Courthouse Clock Tower is 213' from ground to top of the tower)*



PROJECT NEEDS

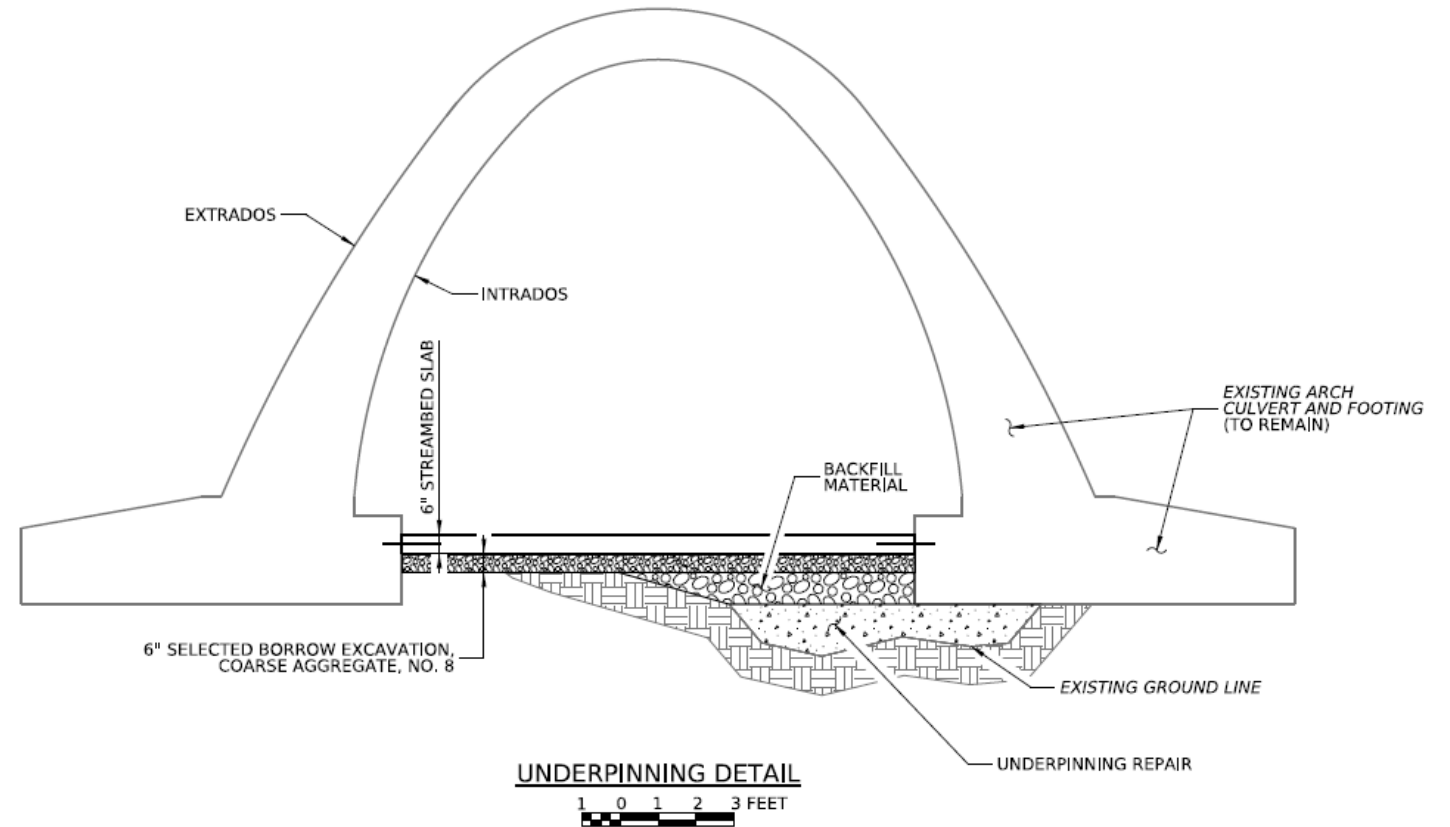
The Intent of the Project is to Rehabilitate the Culvert:

- Address Undermining of the Footings
- Address Blockages and Waterfalls Within the Culvert Opening
- Perform General Concrete Rehabilitation Efforts on the Barrel and Headwalls

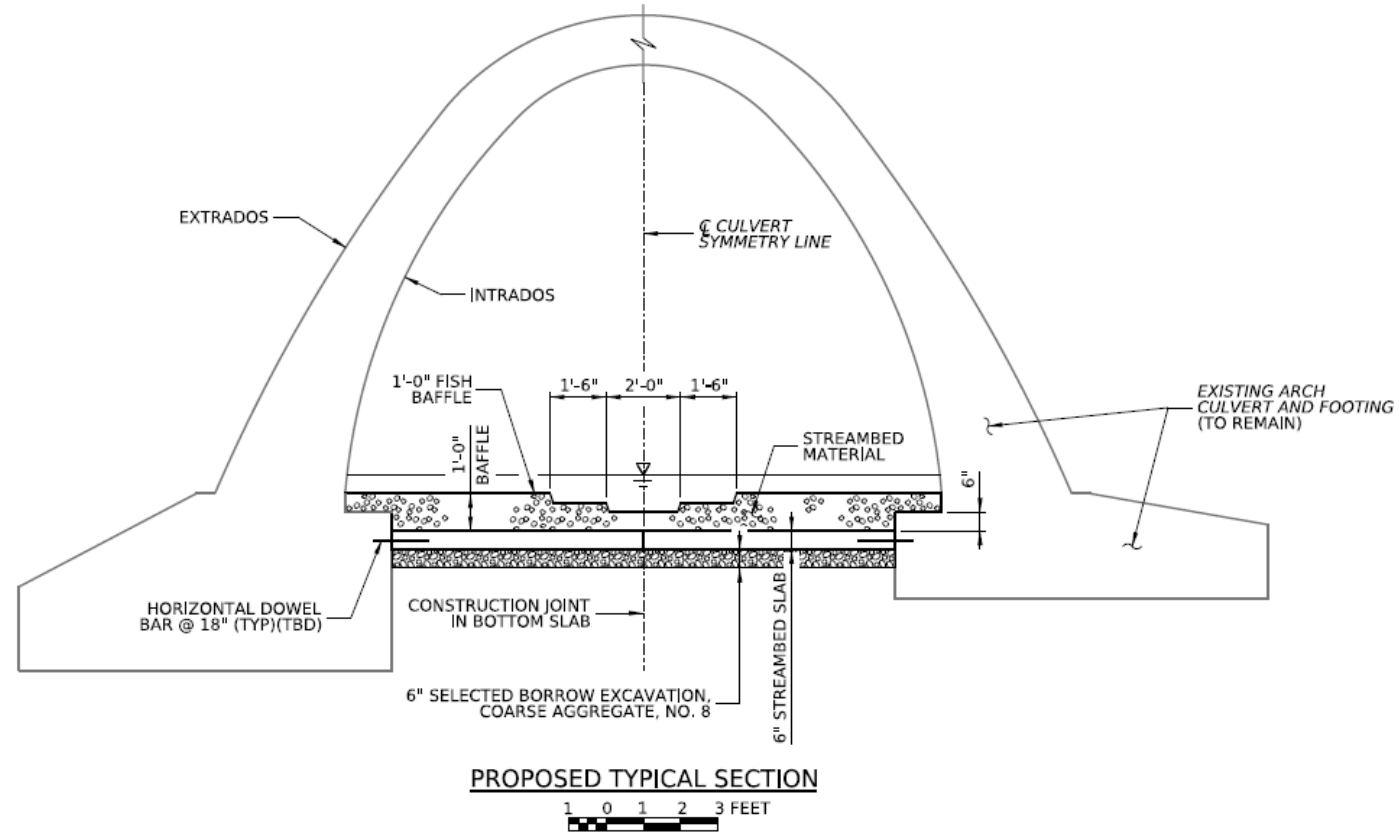


PROPOSED IMPROVEMENTS

- Regrade Streambed, Removing Debris and Backfilling Scour Holes
- Underpin Culvert Footings
- Install Streambed Paving Slabs, Baffles, and Cutoff Walls
- Place Scour Protection Rock
- Repair Spalled and Delaminated Concrete

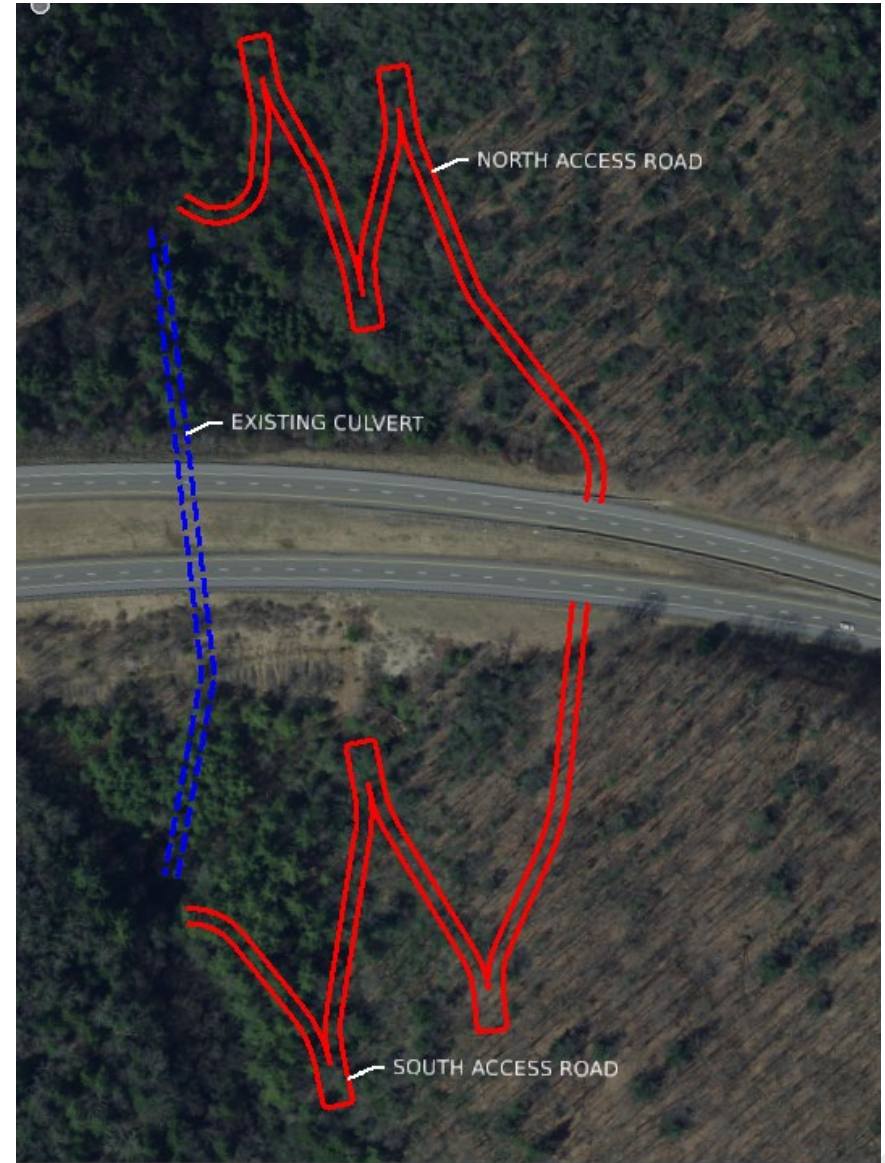


PROPOSED TYPICAL CULVERT SECTION



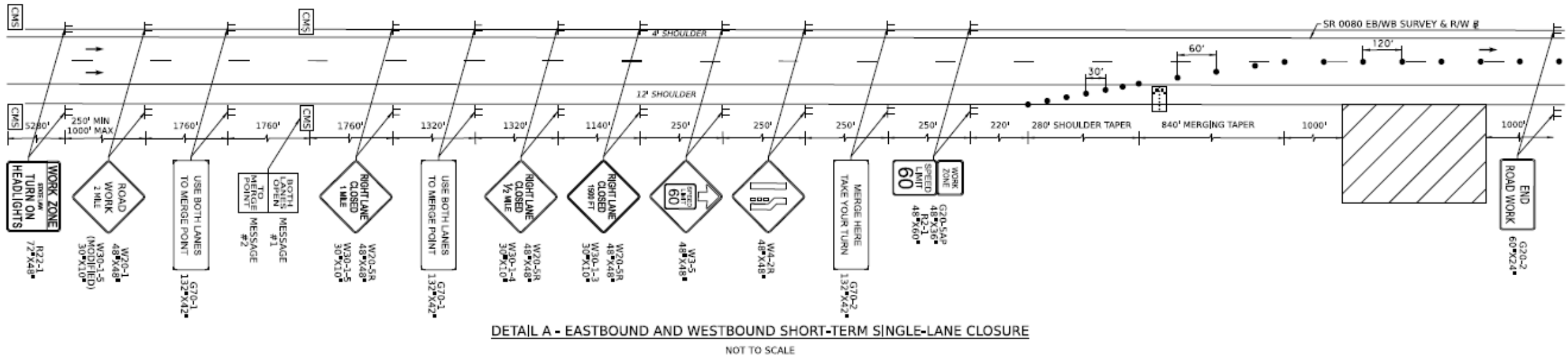
SITE ACCESS

- Major Design Challenge: Accessing Culvert At Bottom of 140'-180' Embankment
- Solution: Construct Access Roads from I-80 EB and WB to Valley Floor, Using Switchback Road Configuration, Large Enough for Contractor Vehicles
- North Access Road:
 - 1585' Long
 - 124' Change in Elevation
- South Access Road:
 - 1665' Long
 - 165' Change in Elevation



I-80 PRELIMINARY TRAFFIC CONTROL

- Warning Signs During Daily Operations
- Daylight Single Lane Closures During Key Events
 - Start Work, Material Deliveries, Stop Work



ANTICIPATED SCHEDULE

- Preliminary Engineering: January 2024 to Spring 2025
- Final Design: Spring 2025 to Fall 2026
- Let Date: October 1, 2026
- Contractor Mobilization: November 2026
- Access Road Construction: Winter-Fall 2027
- Culvert Rehabilitation: Summer-Fall 2028
- Physical Work Complete: December 2028



PUBLIC INVOLVEMENT

The Project Team welcomes your feedback, local site information, questions, and concerns!

Please contact the PennDOT Project Manager:

Brandon Gabler, PE
(724) 427-3526
bgabler@pa.gov



FOLLOW PENNDOT



www.PennDOT.pa.gov



www.DMV.pa.gov



[PennsylvaniaDepartmentofTransportation](https://www.facebook.com/PennsylvaniaDepartmentofTransportation)



[PennDOTNews](https://twitter.com/PennDOTNews)



[PennsylvaniaDOT](https://www.instagram.com/PennsylvaniaDOT)



[PennDOTSec](https://www.facebook.com/PennDOTSec)



[/company/PennDOT](https://www.linkedin.com/company/PennDOT)



[PennDOTSec](https://twitter.com/PennDOTSec)



[PennsylvaniaDOT](https://www.youtube.com/PennsylvaniaDOT)



Pennsylvania
Department of Transportation