

All improvements will be contained within Commonwealth or Borough legal right-of-way and are described as follows.

**State Road / Mauch Chunk Road improvements include:**

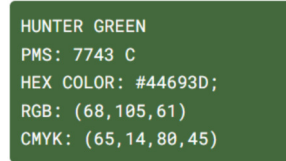
- ❖ To meet present-day signal location and visibility standards new traffic signal poles, mast arms and foundations will be installed on each approach, painted hunter green; increase from one to two overhead signals on each approach plus one ground mount supplemental near-side signal for each Delaware Avenue approach
- ❖ To increase signal visibility, especially for vehicles coming from SR 248 into Palmerton, upgrade signal lenses from 8" to 12" LED for all signal heads. Install yellow retroreflective backplates on all signal heads.
- ❖ Install new accessible pedestrian countdown signal heads (includes sight impaired notification) and push buttons on the two eastern corners. Repaint the existing crosswalk on the eastern approach
- ❖ To modernize equipment and reduce overhead wiring install new controller cabinet, junction boxes, conduit, and wiring.
- ❖ Install a video detection system for side street approaches to improve intersection efficiency and overall flow through the Delaware Avenue corridor.
- ❖ Install emergency vehicle preemption system for all approaches.
- ❖ Retime all phases and provide time-based coordination with the Third Street and Fifth Street intersections.

**Third Street improvements will supplement the improvements currently under construction and include:**

- ❖ Retime all phases and provide time-based coordination with the Mauch Chunk Road and Fifth Street intersections.
- ❖ Install westbound overhead lane indicator sign

**Fifth Street improvements include:**

- ❖ To meet present-day signal location and visibility standards new traffic signal poles, mast arms and foundations will be installed on each approach, painted hunter green; increase from one to two overhead signals on each approach plus one ground mount supplemental near-side signal for each Delaware Avenue approach
- ❖ To increase signal visibility upgrade signal lenses from 8" to 12" LED for all signal heads. Install yellow retroreflective backplates on all signal heads.
- ❖ Install new accessible pedestrian countdown signal heads (includes sight impaired notification) and push buttons on all four corners.
- ❖ To modernize equipment and reduce overhead wiring install new controller cabinet, junction boxes, conduit, and wiring.
- ❖ Install a video detection system for side street approaches to improve intersection efficiency and overall flow through the Delaware Avenue corridor.
- ❖ Install emergency vehicle preemption system for all approaches. Retime all phases and provide time-based coordination with the Third Street and Mauch Chunk Road Fifth Street intersections.



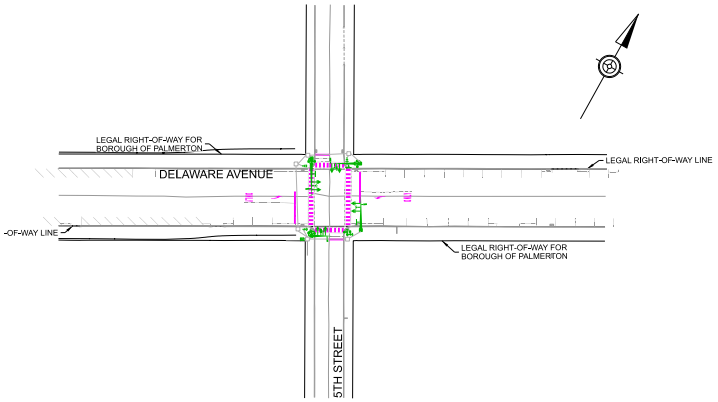
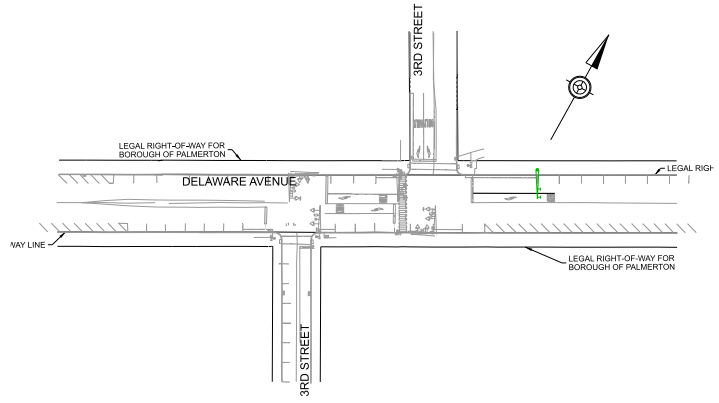
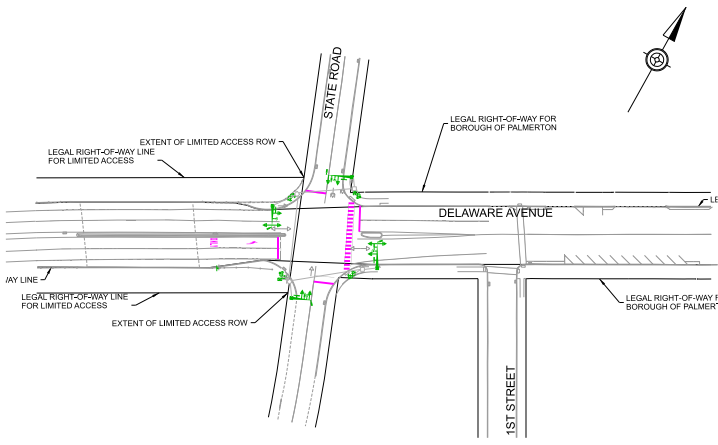
EXAMPLE OF PROPOSED TRAFFIC SIGNAL HEADS, WITH EMERGENCY PRE-EMPTION DETECTION



EXISTING TRAFFIC SIGNAL HEAD AT FIFTH STREET

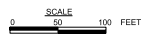


DISTRICT	COUNTY	ROUTE	SECTION	SHEET	
S-0	CARBON	2002	04S	OF	
PALMERTON TOWNSHIP					
REV	NOV	REVISIONS	DATE	BY	APPD



LOCATION OF PROSED REPLACEMENT SIGNAL EQUIPMENT AND REFRESHED PAVEMENT MARKINGS

ALL WORK TO BE COMPLETED WITHIN COMMONWEALTH OR BOROUGH RIGHT OF WAY



INDEX MAP

PREPARED BY:  
**FK&K**  
PREPARED BY:  
RK&K ENGINEERING