

SR 3007 (BREINIGSVILLE ROAD) OVER BREINIG RUN BRIDGE PROJECT

Upper Macungie Township, Lehigh County

BRIDGE FEATURES:

- BUILT IN 1921
(REINFORCED CONCRETE SLAB WITH CONCRETE ENCASED STEEL BEAMS)
- BRIDGE IS IN POOR CONDITION

PURPOSE:

- REPLACE THE EXISTING STRUCTURE IN A WAY THAT PROVIDES A SAFE CROSSING FOR THE TRAVELING PUBLIC WHILE MEETING CURRENT DESIGN STANDARDS.

ANTICIPATED PROJECT SCHEDULE:

- (SUBJECT TO CHANGE)
- PRELIMINARY AND FINAL ENGINEERING (PRESENT TO FALL 2026)
- AWARD CONTRACT (FALL/WINTER 2026)
- CONSTRUCTION (SPRING 2027 TO WINTER 2028)
- ANTICIPATED CONSTRUCTION DURATION - 3 MONTHS



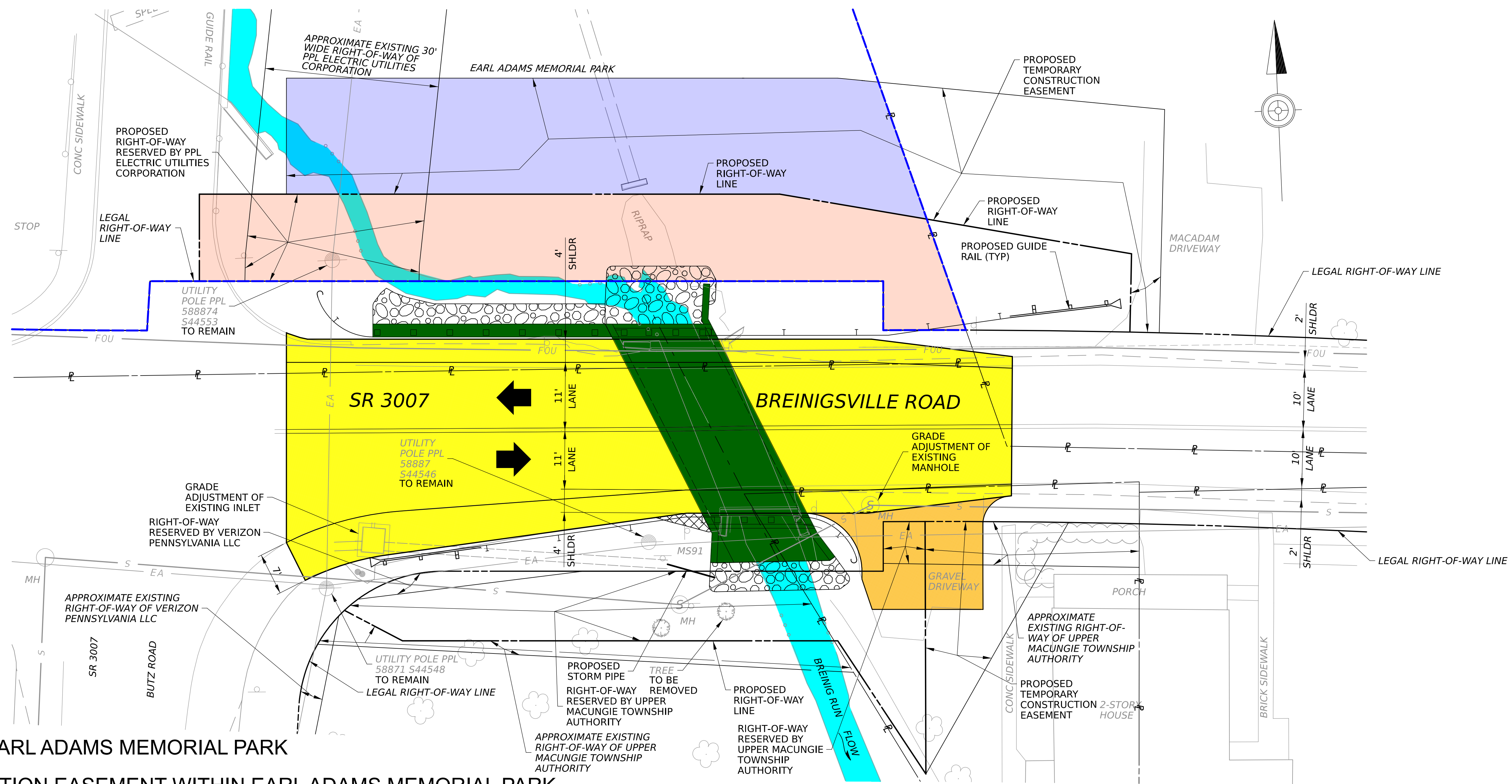
SR 3007 (BREINIGSVILLE ROAD) LOOKING EAST



SR 3007 (BREINIGSVILLE ROAD) LOOKING WEST



SOUTHEAST QUADRANT DRIVEWAY



PLAN VIEW

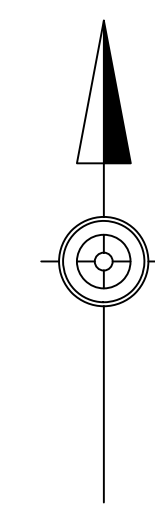
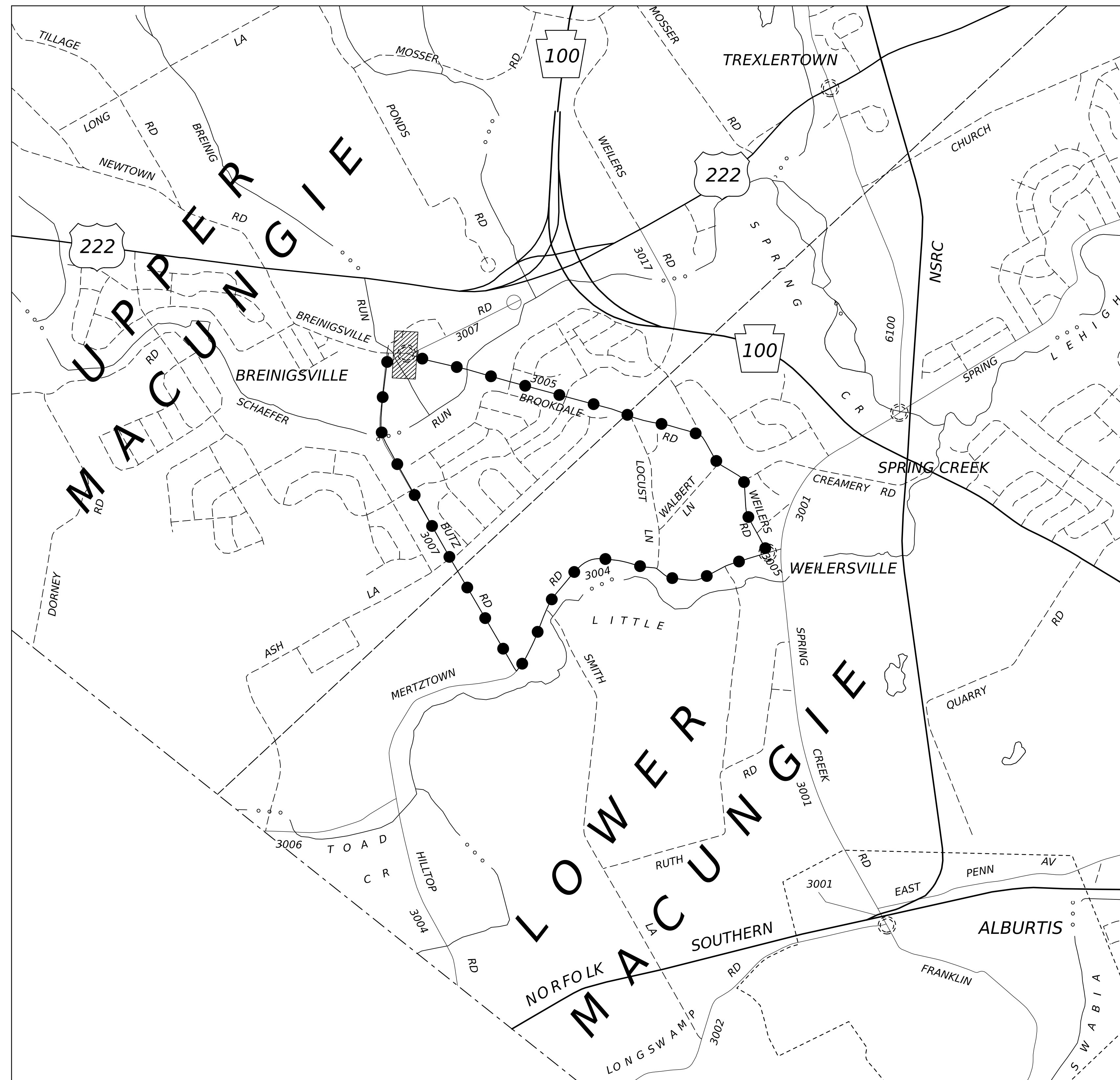
PRELIMINARY

LEGEND:

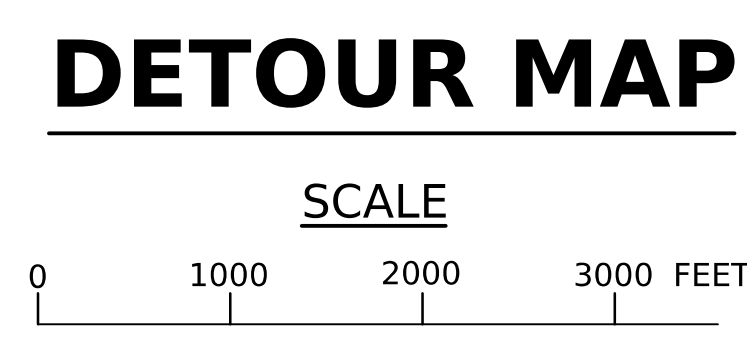
- PROPOSED FULL-DEPTH ROADWAY RECONSTRUCTION
- PROPOSED STRUCTURE
- BREINIG RUN
- PROPOSED DRIVEWAY ADJUSTMENT
- PROPOSED RIGHT-OF-WAY WITHIN EARL ADAMS MEMORIAL PARK
- PROPOSED TEMPORARY CONSTRUCTION EASEMENT WITHIN EARL ADAMS MEMORIAL PARK
- BOUNDARY OF SECTION 4(f)/SECTION 2002 PROTECTED PROPERTY EARL ADAMS MEMORIAL PARK

SR 3007 (BREINIGSVILLE ROAD) OVER BREINIG RUN BRIDGE PROJECT

Upper Macungie Township, Lehigh County



- LEGEND**
- PROJECT LOCATION
 - DETOUR (6.84 MILES)
 - STATE HIGHWAY
 - TOWNSHIP ROAD
 - MUNICIPAL BOUNDARY
 - STREAM



NORTH STRUCTURE ELEVATION

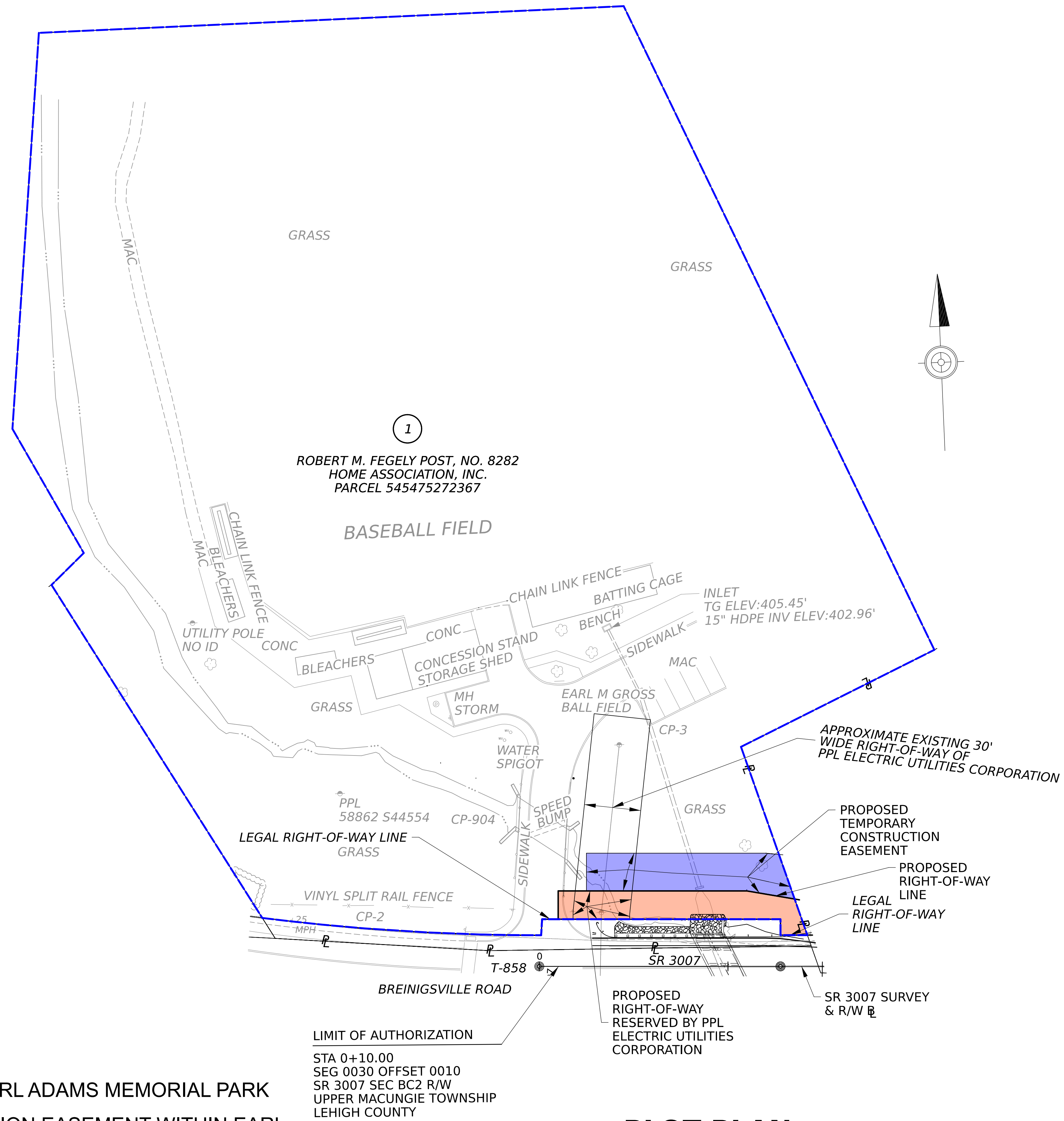


SOUTH STRUCTURE ELEVATION

PRELIMINARY

SR 3007 (BREINIGSVILLE ROAD) OVER BREINIG RUN BRIDGE PROJECT

Upper Macungie Township, Lehigh County



LEGEND:

- PROPOSED RIGHT-OF-WAY WITHIN EARL ADAMS MEMORIAL PARK
- PROPOSED TEMPORARY CONSTRUCTION EASEMENT WITHIN EARL ADAMS MEMORIAL PARK
- BOUNDARY OF SECTION 4(f)/SECTION 2002 PROTECTED PROPERTY EARL ADAMS MEMORIAL PARK

PLOT PLAN
SECTION 4(f)/SECTION 2002 PROTECTED PROPERTY

PRELIMINARY