



GILBERTSVILLE ROAD
OVER BRANCH OF MINISTER CREEK
BRIDGE REPLACEMENT PROJECT
SR 4040 SECTION MB3
MONTGOMERY COUNTY
PENNSYLVANIA DEPARTMENT OF TRANSPORTATION
ENGINEERING DISTRICT 6-0

MEETING AGENDA

Project Location

Project Description

Project Purpose and Need

Environmental Resources

Project Improvements

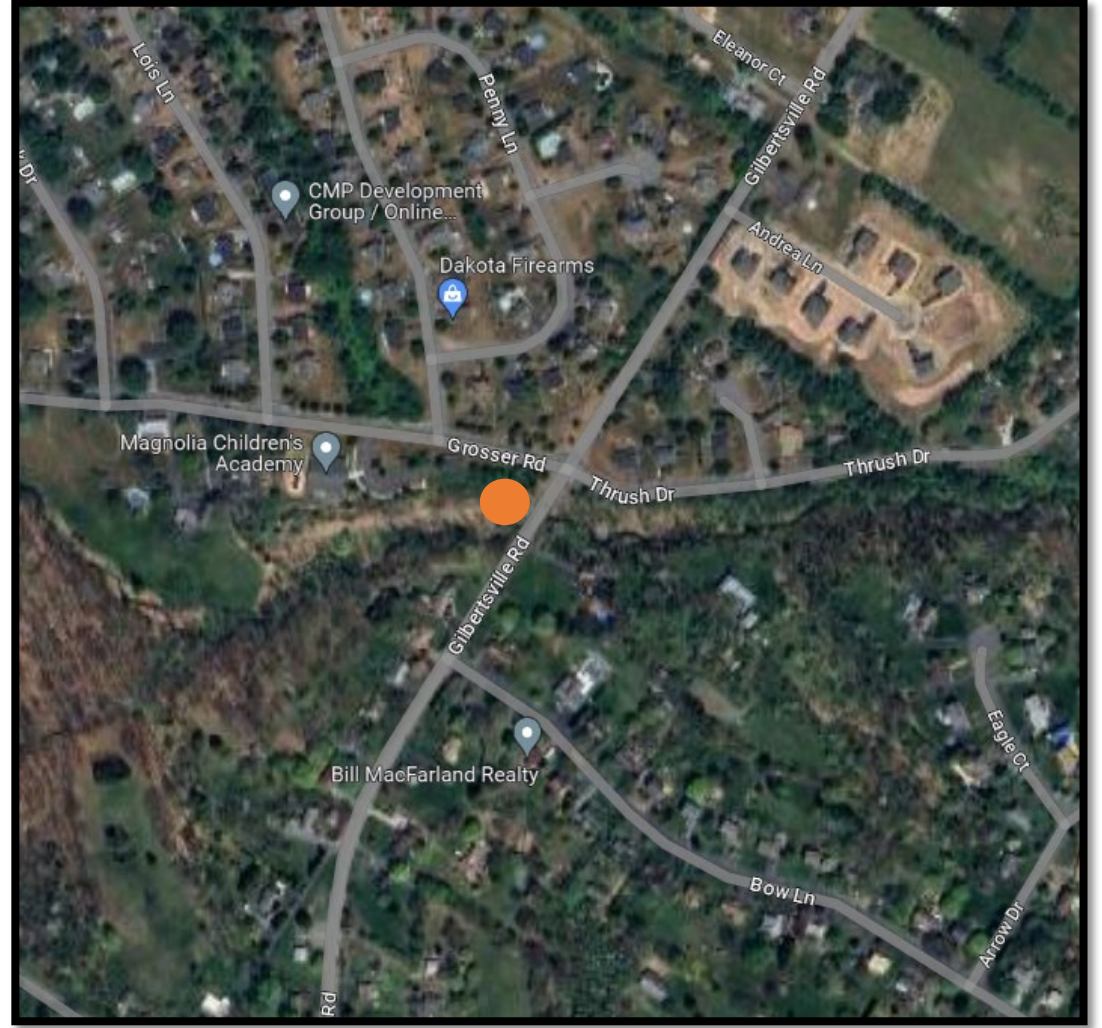
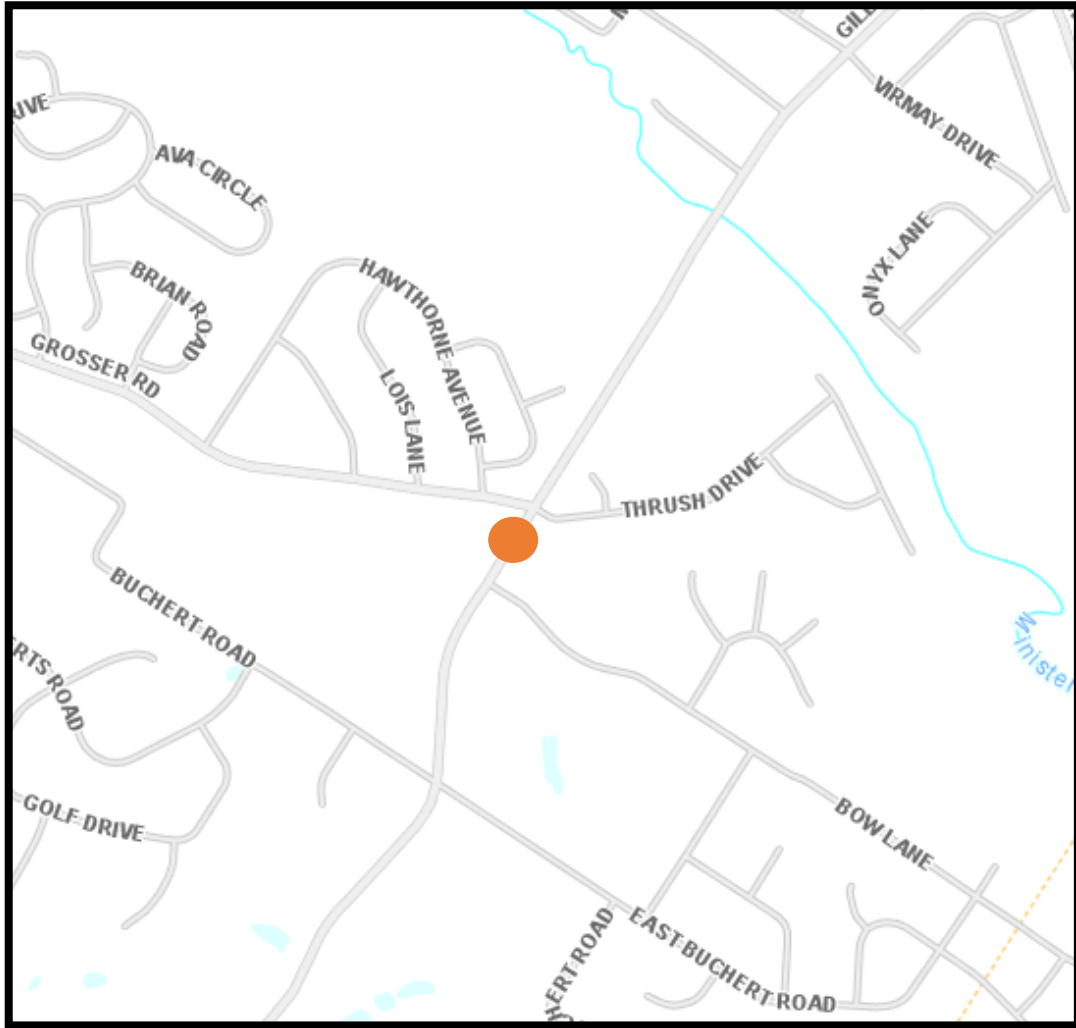
Traffic Control

Project Schedule

Questions



PROJECT LOCATION



● Bridge



PROJECT DESCRIPTION

Gilbertsville Road bridge replacement over Branch of Minister Creek

Existing Structure:

- Reinforced concrete slab bridge
- Built in 1938
- 16.5 feet length and 27 feet width
- Two 11' lanes with no shoulders

Proposed Structure:

- 20x6.25 feet precast concrete box culvert
- Two 12 feet lanes with 5 feet shoulders



PROJECT PURPOSE



The purpose of the project is to provide a structure that is capable of safely handling current and expected future levels of traffic on Gilbertsville Road while also improving hydraulic conditions so as to reduce the likelihood and severity of flooding.



PROJECT NEEDS

- Existing bridge rated in poor condition
- No shoulders on bridge or nearby road until intersection
- No cyclist accommodation
- Guiderail in poor shape

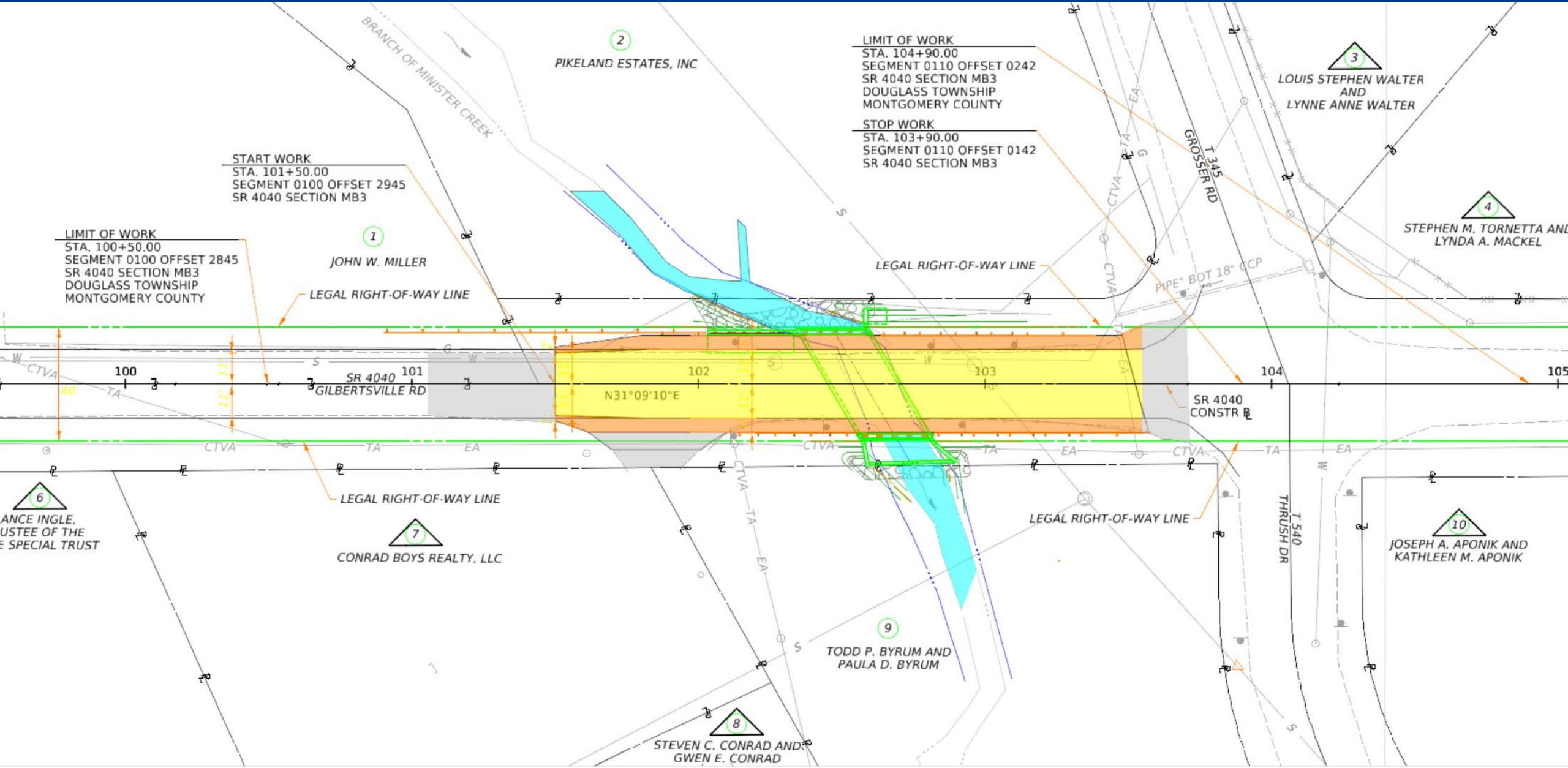


ENVIRONMENTAL RESOURCES

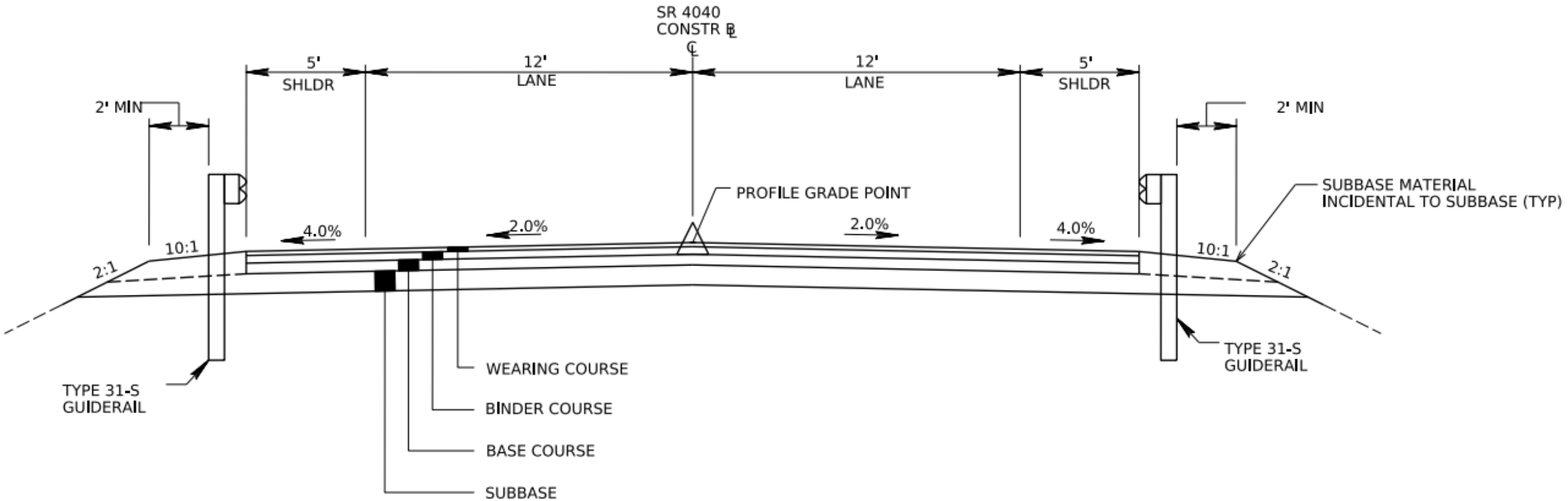
- Branch of Minister Creek:
 - Part of FEMA flood zone and study area
 - Not a wild trout stream
 - Not trout stocked
- Archaeology studies are complete
- Wetlands present in NW and NE quadrants
 - No bog turtles
 - No permanent wetland impacts
 - Some temporary impacts



PROJECT IMPROVEMENT



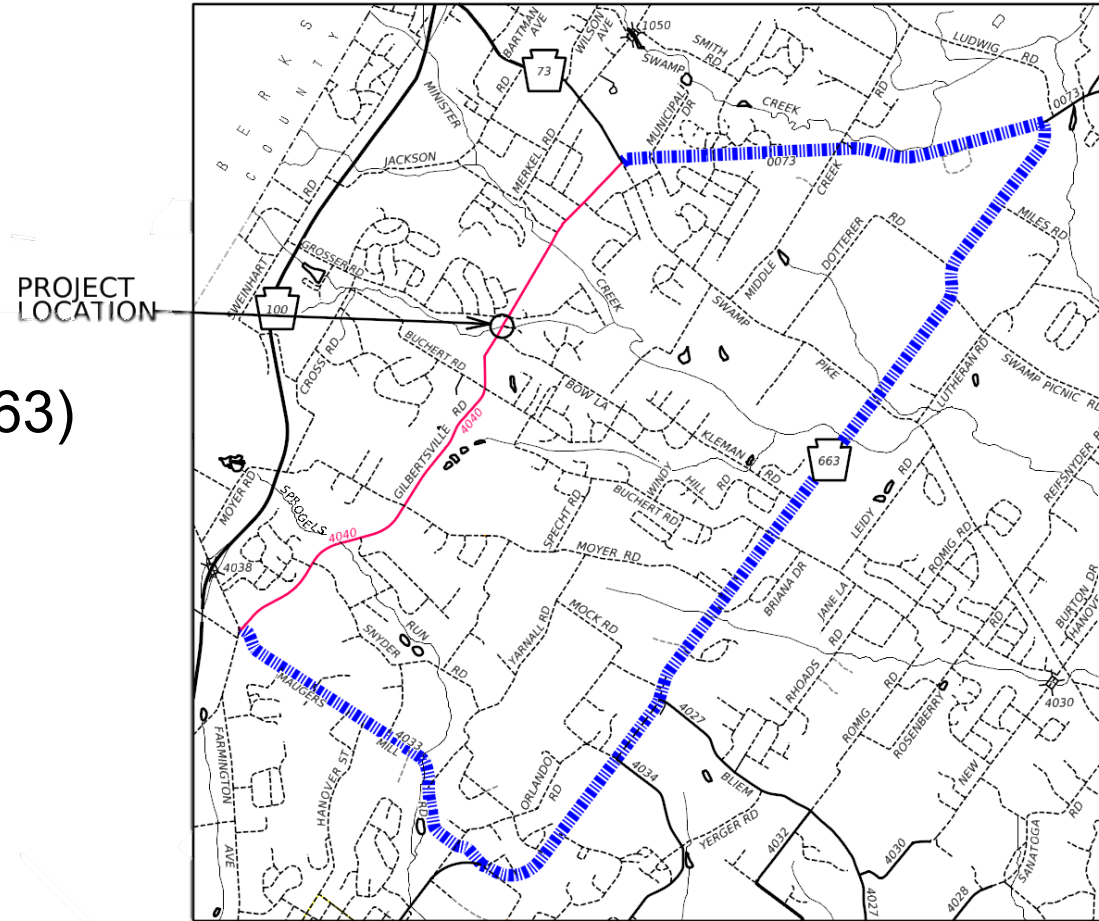
PROJECT IMPROVEMENT



TYPICAL SECTION - SR 4040
GILBERTSVILLE ROAD OVER
BRANCH OF MINISTER CREEK
STA 101+85.00 TO STA 103+55.00
NOT TO SCALE

TRAFFIC CONTROL

- Detour plan
 - Uses State Routes
 - Big Rd (SR 0073)
 - N Charlotte St (SR 0663)
 - Maugers Mill Rd (SR 4033)
 - Length: 8 Miles
 - Expected to be used for 3 months.



PROJECT SCHEDULE

TASK	2024				2025				2026				2027			
	Q1	Q2	Q3	Q4	Q1	Q2	Q3	Q4	Q1	Q2	Q3	Q4	Q1	Q2	Q3	Q4
NEPA Studies	■	■	■	■	■											
Geotechnical Studies					■	■	■									
ROW Acquisition						■	■	■	■							
Utility Conflict Resolution						■	■	■	■							
Section 404/105 Permitting						■	■	■	■							
Final Design						■	■	■	■							
Contracting										■						
Construction											■	■	■	■		



FOR MORE INFORMATION, VISIT THE PENNDOT DISTRICT 6 WEBSITE
WWW.PENNDOT.PA.GOV/REGIONALOFFICES/DISTRICT-6
PROJECT LINK

[HTTPS://BIT.LY/GILBERTSVILLERDBRIGEREPLACEMENT](https://bit.ly/gilbertsvillerdbriqereplacement)