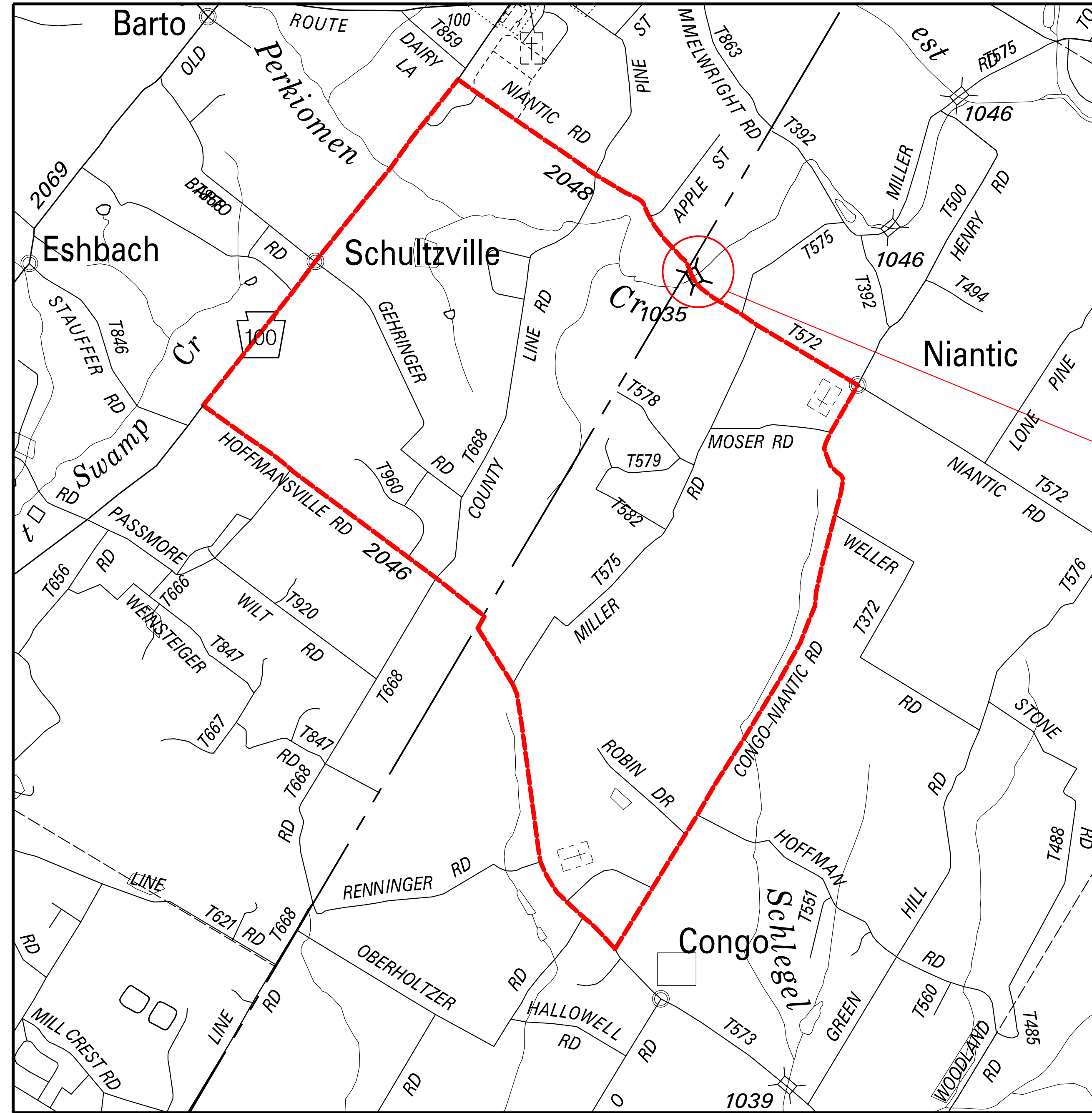
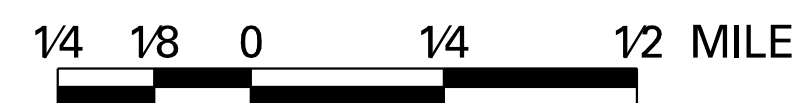


SR 1035 SECTION MB1 BRIDGE REPLACEMENT PROJECT NIANTIC ROAD OVER WEST BRANCH OF THE PERKIOMEN CREEK TRAFFIC CONTROL PLAN-PROPOSED DETOUR



PROJECT LOCATION
DETOUR ROUTE LENGTH: 7.0 MILES

MAP SCALE



LEGEND

- STATE ROUTE
- TOWNSHIP ROAD
- DETOUR ROUTE
- WATERWAYS
- COUNTY LINE
- PROJECT LOCATION