



SR 202, Section LPR
US 202/US 1 intersection
Area Improvements Project
Chadds Ford and Concord Townships



The project is located in Concord and Chadds Ford Townships, Delaware County and involves improvements to ease congestion and installation of landscaping at the following intersections:

- Wilmington West Chester Pike (SR 0202) & Baltimore Pike (SR 0001)
- Wilmington Pike (SR 0202) & State Farm Drive (T483)/Brandywine Drive (T419)
- Baltimore Pike (SR 0001) & State Farm Drive (T483)/Applied Card Way

Wilmington West Chester Pike (SR 0202) & Baltimore Pike (SR 0001)

The existing intersection at Wilmington West Chester Pike & Baltimore Pike is signalized with dedicated left turn lanes and right turn lanes on all approaches. The key issue at the intersection is the lack of capacity due to merge of the right lane on eastbound Baltimore Pike, and a single left hand turn from northbound Wilmington Pike to westbound Baltimore Pike. Improvements at this intersection includes the following:

- Widen Baltimore Pike west of Wilmington West Chester Pike to three lanes and convert dedicated right turn lane to combination thru-right lane, providing three thru lanes.
- Construct additional dedicated northbound left-turn on Wilmington West Chester Pike providing two dedicated left turn lanes.
- Landscaped medians and islands.
- Eliminate left turns to Dickinson Drive from westbound Baltimore Pike by removing dedicated left turn lane and installing landscaped islands.
- Signal modernization.

Wilmington Pike (SR 0202) & State Farm Drive (T483)/Brandywine Drive (T419)

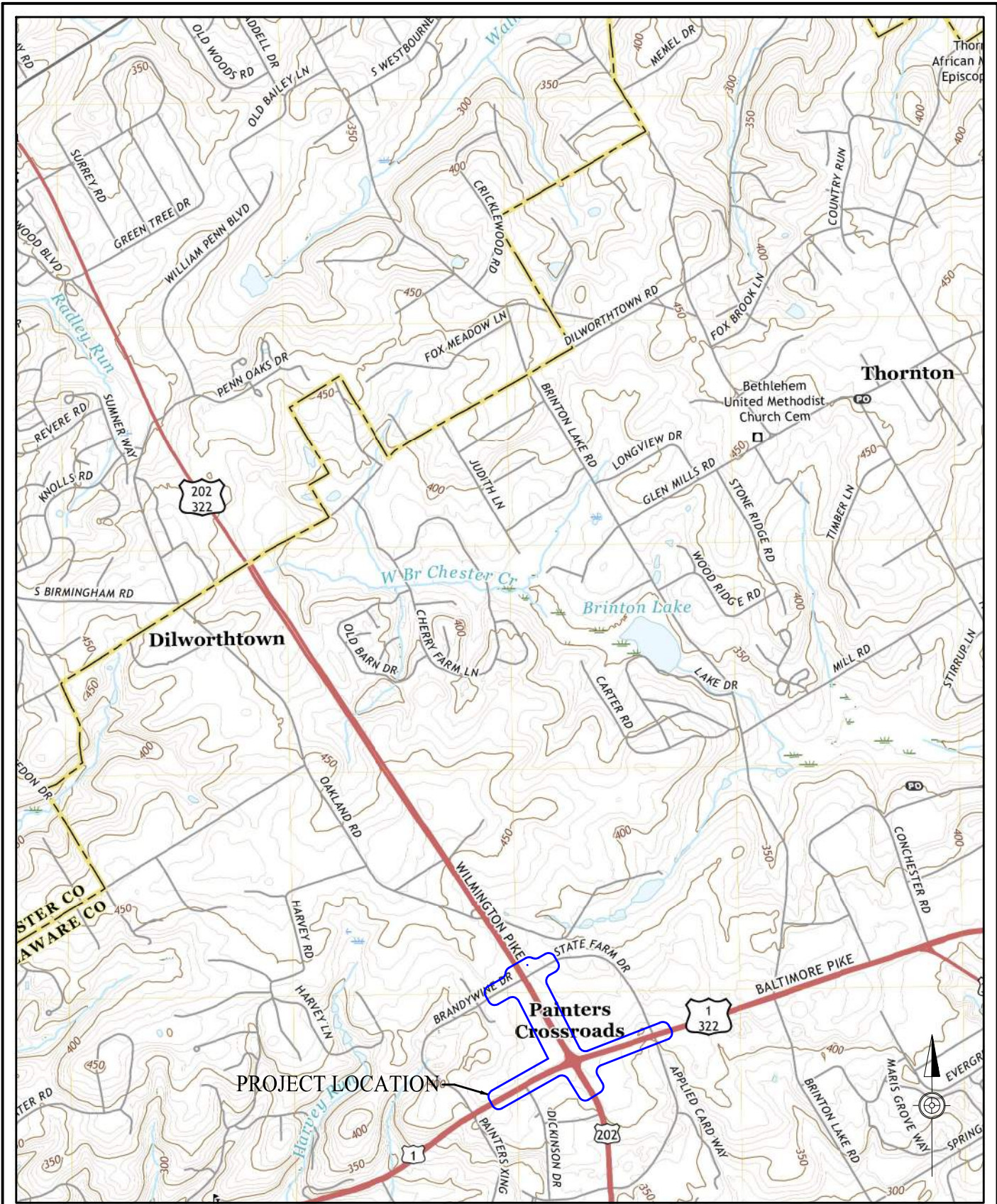
The existing intersection at Wilmington Pike and State Farm Drive/Brandywine Drive is signalized with dedicated right turn lanes, and combined left/thru lanes. Improvements at this intersection includes the following:

- Construct dedicated left turn lanes on State Farm Drive and Brandywine Drive.
- Align thru lanes from State Farm Drive and Brandywine Drive.
- Signal modernization.
- Landscaped medians

Baltimore Pike (SR 0001) & State Farm Drive (T-483)/Applied Card Way

Improvements at this intersection are aimed at providing safe passage for pedestrians to cross Baltimore Pike as part of future projects. Improvements at this intersection includes the following:

- Remove free flow right turn movement from westbound Baltimore Pike to State Farm Drive. Right turn movements will be signal controlled.
- Remove island on the northeast corner of the intersection.
- Signal modernization.
- Landscaped medians.



PROJECT LOCATION MAP

USGS QUADRANGLE: WEST CHESTER

Figure 1

SCALE: 1" = 2000'



FIGURE 2

FIGURE 5

FIGURE 3

FIGURE 4

SR 0202 / SR 0322
WILMINGTON WESTCHESTER PIKE

T-483 (STATE FARM DR)

T-419 (BRANDYWINE DR)

SR 0001 (BALTIMORE PIKE)

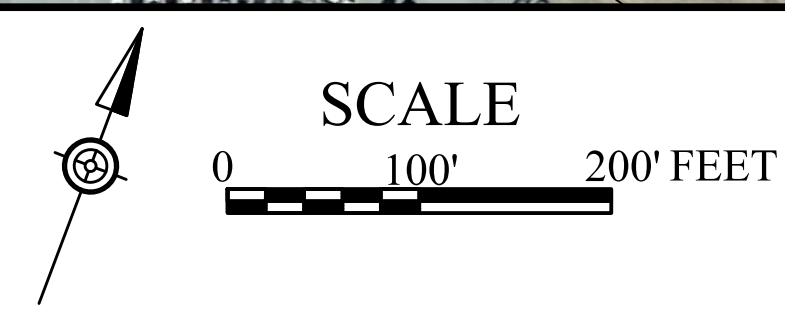
SR 0001 / SR 0322 (BALTIMORE PIKE)

STATE FARM DRIVE

APPLIED CARD WAY

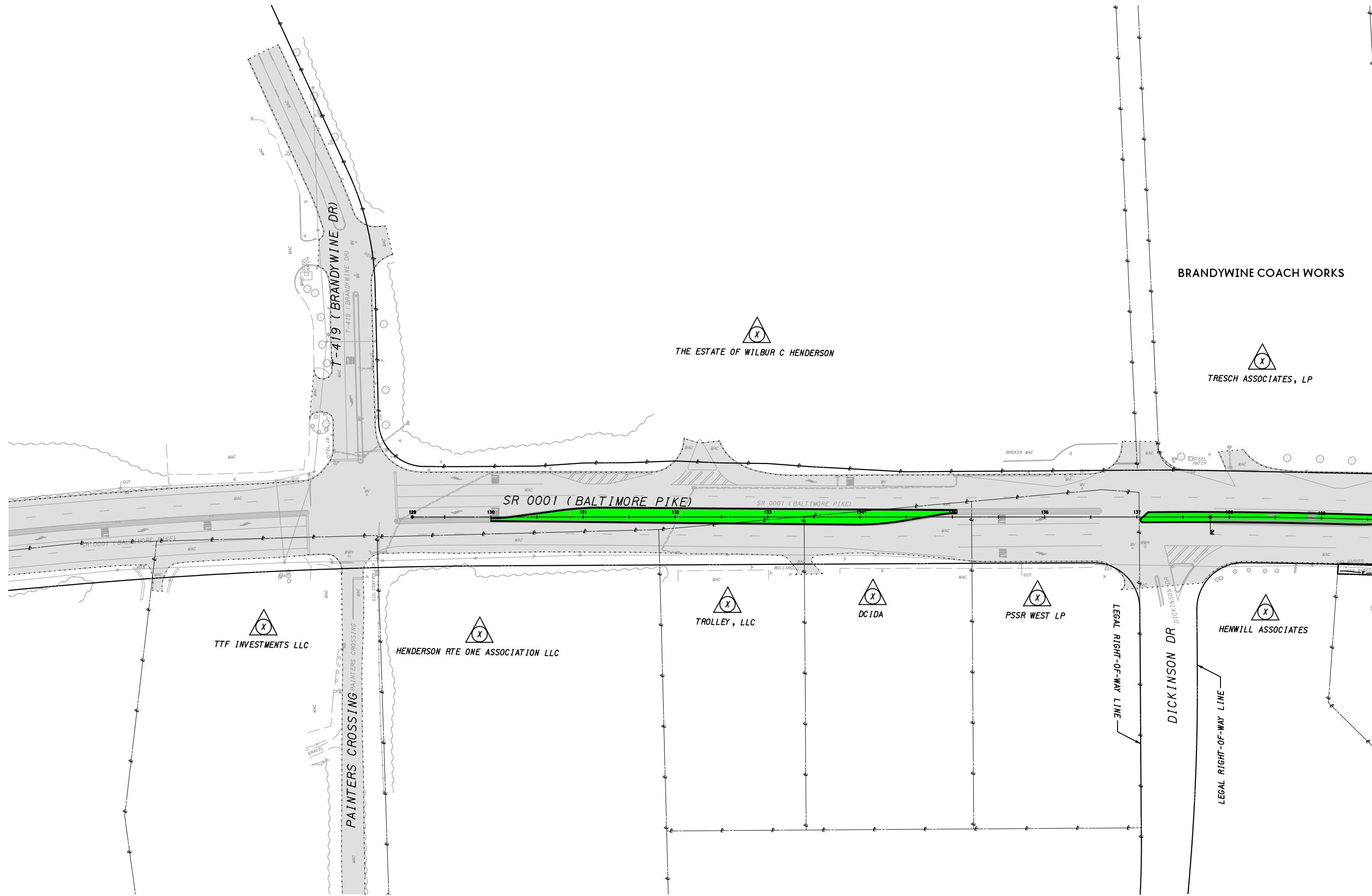
T-419 BRANDYWINE DR

DICKINSON DR



- FULL DEPTH REPLACEMENT
- MEDIAN REPLACEMENT
- LANDSCAPED ISLAND
- EXISTING PAVEMENT

SR 0202 LPR DELAWARE COUNTY, PENNSYLVANIA	
OVERALL PLAN	
JANUARY 2021	FIGURE 1



BRANDYWINE COACH WORKS

THE ESTATE OF WILBUR C HENDERSON

TRESCH ASSOCIATES, LP

SR 001 (BALTIMORE PIKE)

TTF INVESTMENTS LLC

HENDERSON RTE ONE ASSOCIATION LLC

TROLLEY, LLC

DCIDA

PSSR WEST LP

HENWILL ASSOCIATES

PAINTERS CROSSING

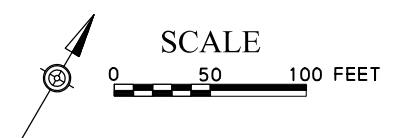
LEGAL RIGHT-OF-WAY LINE

DICKINSON DR

LEGAL RIGHT-OF-WAY LINE



URBAN ENGINEERS



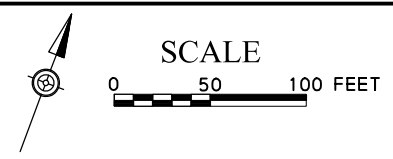
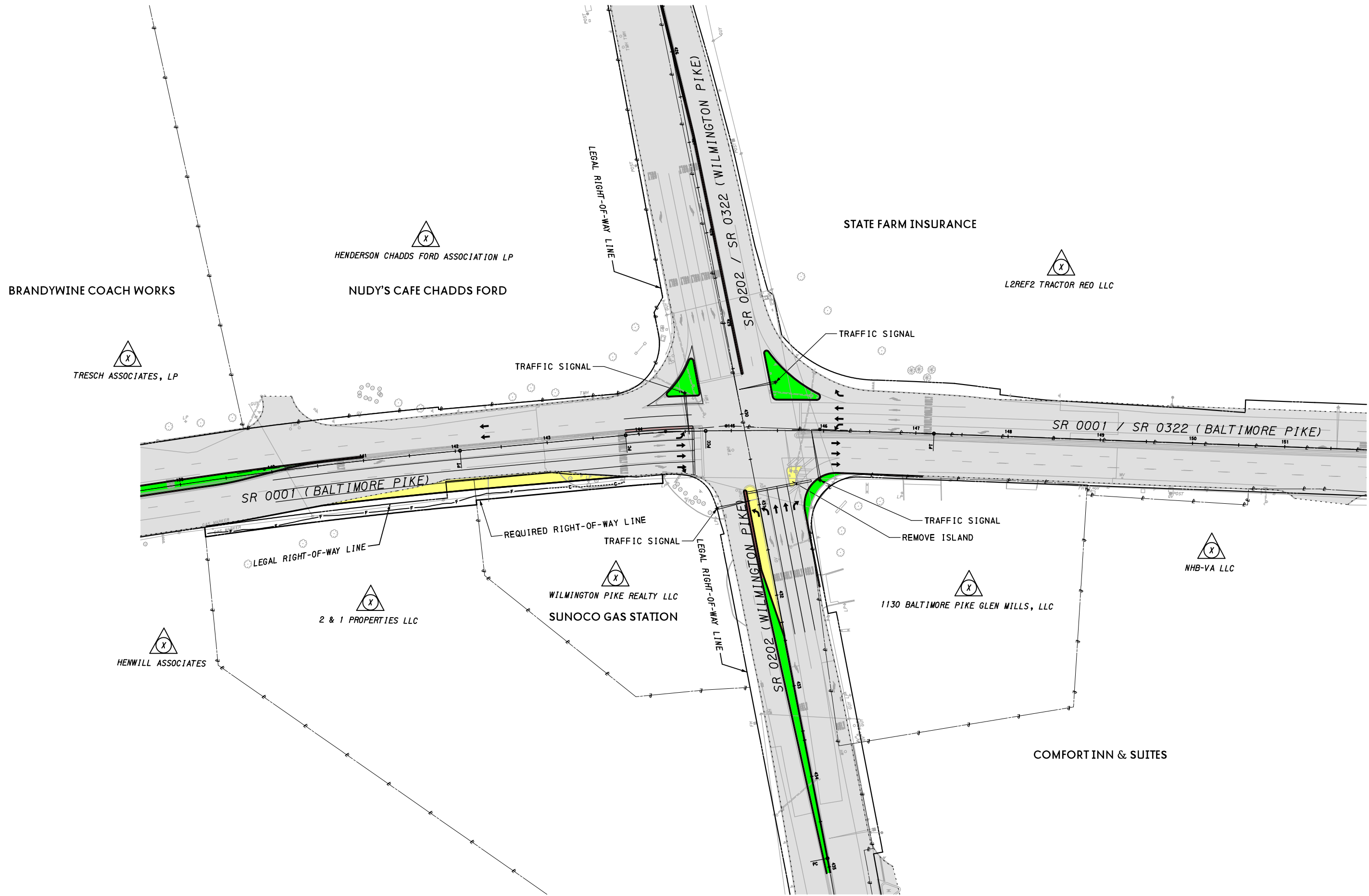
- FULL DEPTH REPLACEMENT
- CONCRETE CURB/ISLAND
- LANDSCAPED ISLAND
- EXISTING PAVEMENT

SR 0202 LPR
DELAWARE COUNTY, PENNSYLVANIA

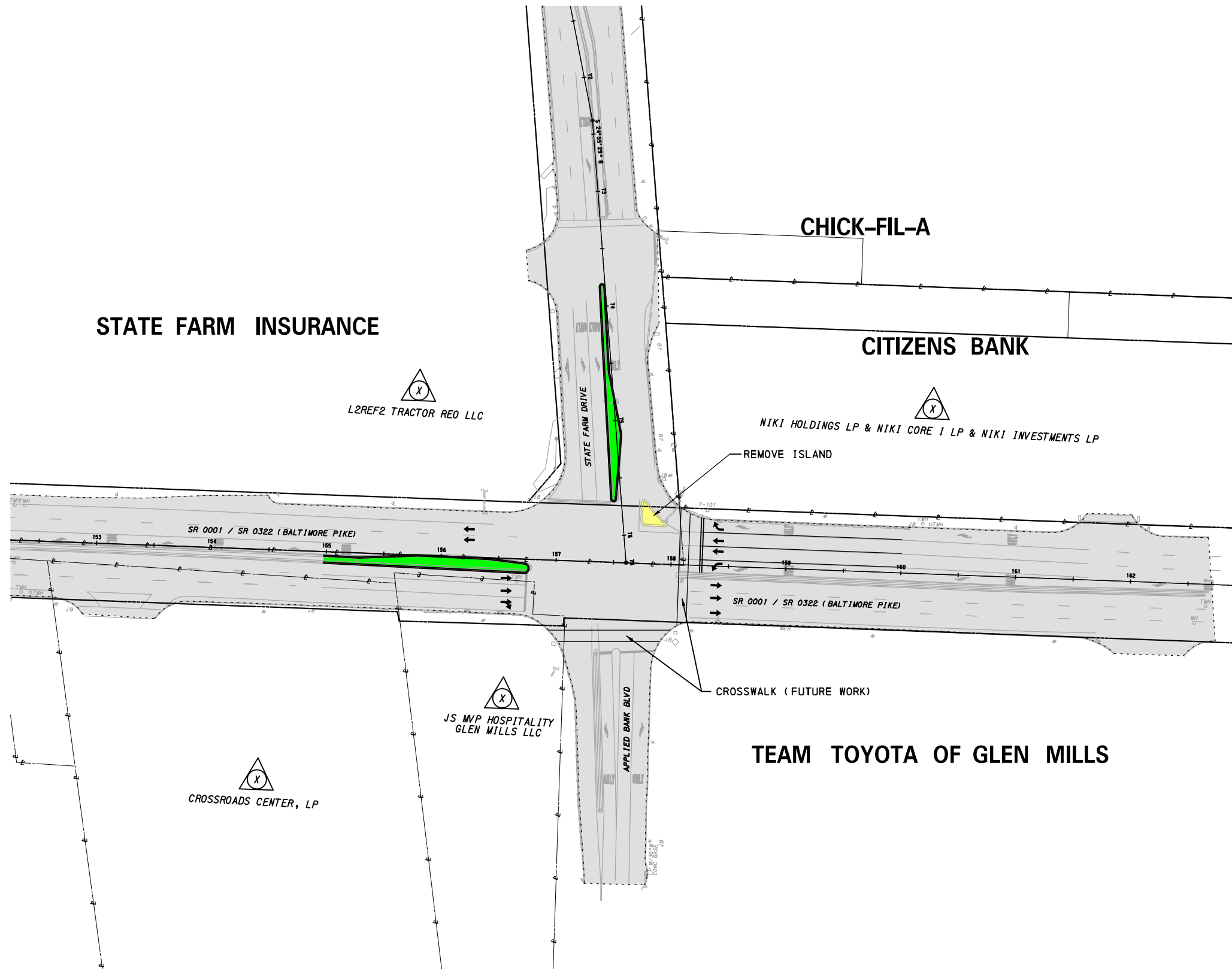
SR 001 BALTIMORE PIKE

JANUARY 2021

FIGURE 2



- FULL DEPTH REPLACEMENT
- CONCRETE CURB/ISLAND
- LANDSCAPED ISLAND
- EXISTING PAVEMENT



STATE FARM INSURANCE

CHICK-FIL-A

CITIZENS BANK

L2REF2 TRACTOR REO LLC

NIKI HOLDINGS LP & NIKI CORE I LP & NIKI INVESTMENTS LP

REMOVE ISLAND

SR 0001 / SR 0322 (BALTIMORE PIKE)

SR 0001 / SR 0322 (BALTIMORE PIKE)

CROSSWALK (FUTURE WORK)

JS MWP HOSPITALITY GLEN MILLS LLC

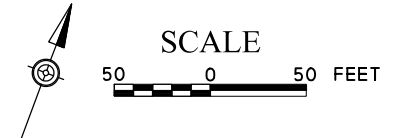
TEAM TOYOTA OF GLEN MILLS

CROSSROADS CENTER, LP

APPLIED BANK BLVD

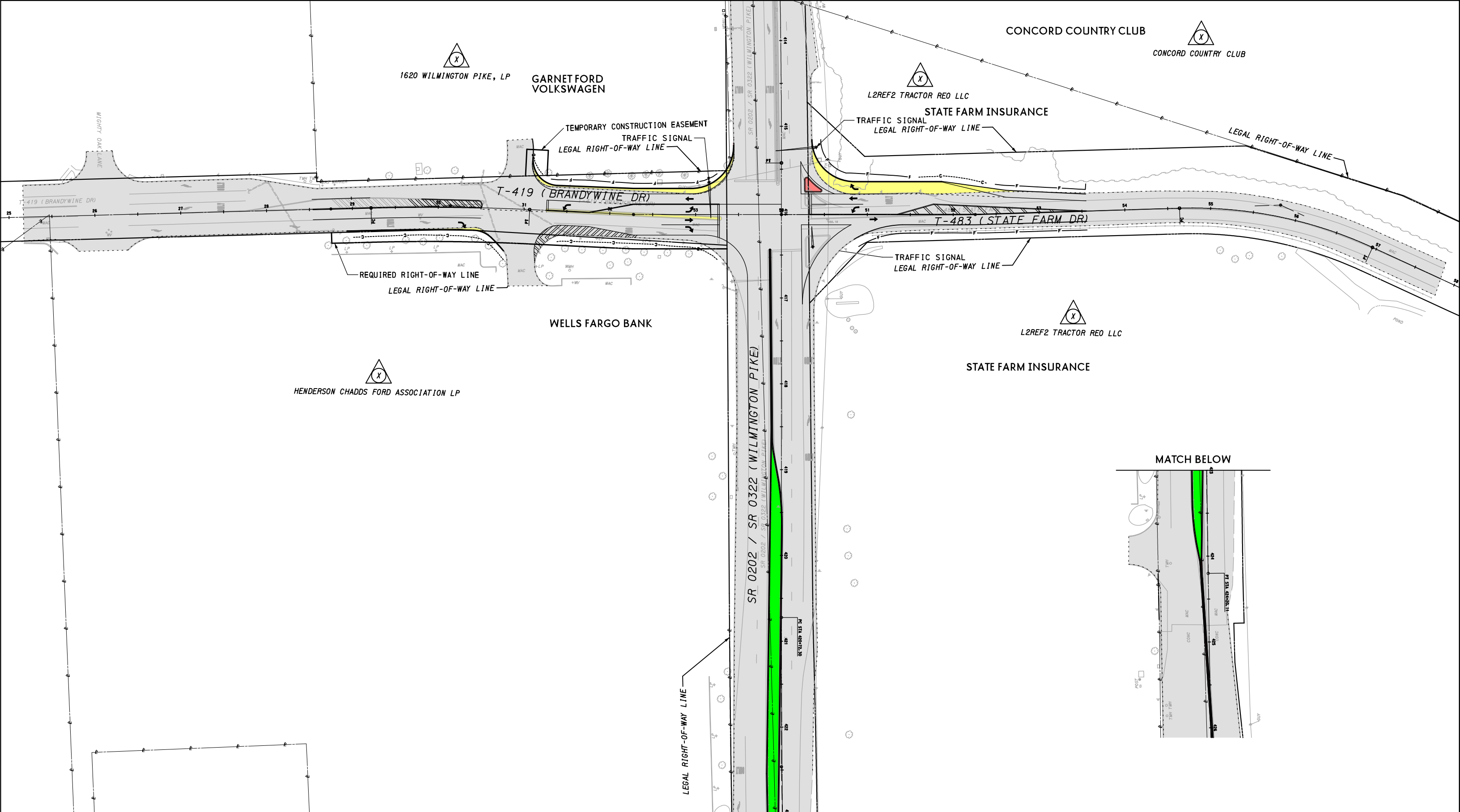


URBAN ENGINEERS



- FULL DEPTH REPLACEMENT
- CONCRETE CURB/ISLAND
- LANDSCAPED ISLAND
- EXISTING PAVEMENT

SR 0202 LPR DELAWARE COUNTY, PENNSYLVANIA	
SR 001 BALTIMORE PIKE & STATE FARM DRIVE	
JANUARY 2021	FIGURE 4



1620 WILMINGTON PIKE, LP
 GARNET FORD VOLKSWAGEN

CONCORD COUNTRY CLUB
 CONCORD COUNTRY CLUB

L2REF2 TRACTOR REO LLC
 STATE FARM INSURANCE

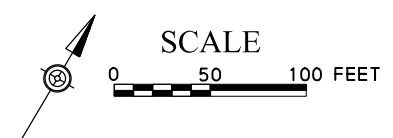
HENDERSON CHADDS FORD ASSOCIATION LP

L2REF2 TRACTOR REO LLC
 STATE FARM INSURANCE

WELLS FARGO BANK

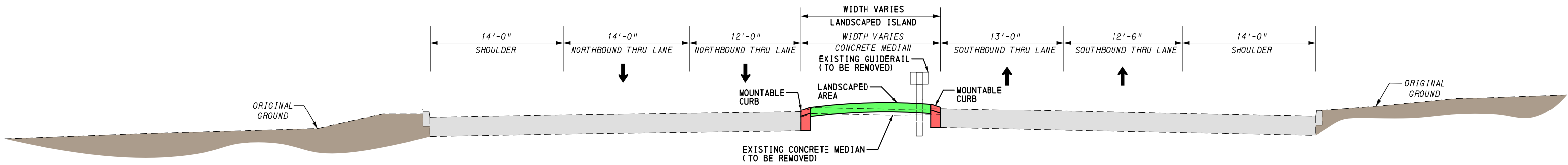
MATCH BELOW

MATCH ABOVE

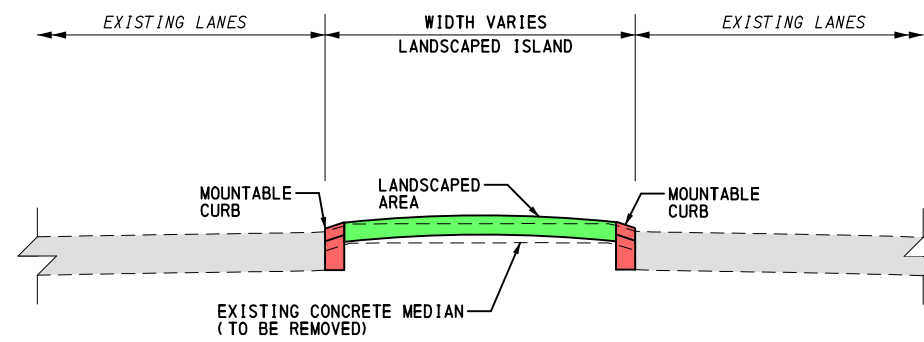


- FULL DEPTH REPLACEMENT
- CONCRETE CURB/ISLAND
- LANDSCAPED ISLAND
- EXISTING PAVEMENT

SR 0202 LPR DELAWARE COUNTY, PENNSYLVANIA	
BRANDYWINE DRIVE & STATE FARM DRIVE	
JANUARY 2021	FIGURE 5



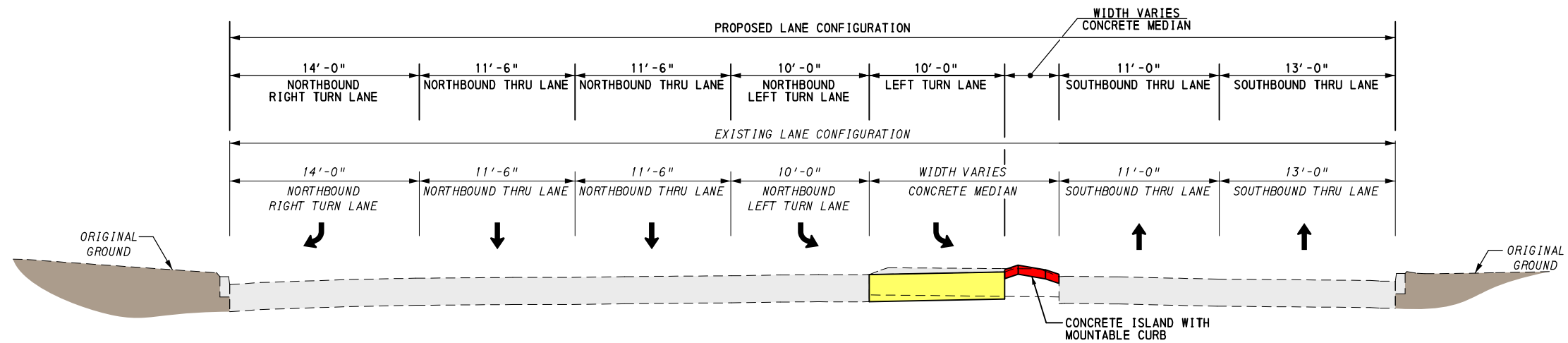
SR 0202 (WILMINGTON PIKE)
 TYPICAL SECTION
 NORTH OF SR 1 (BALTIMORE PIKE)



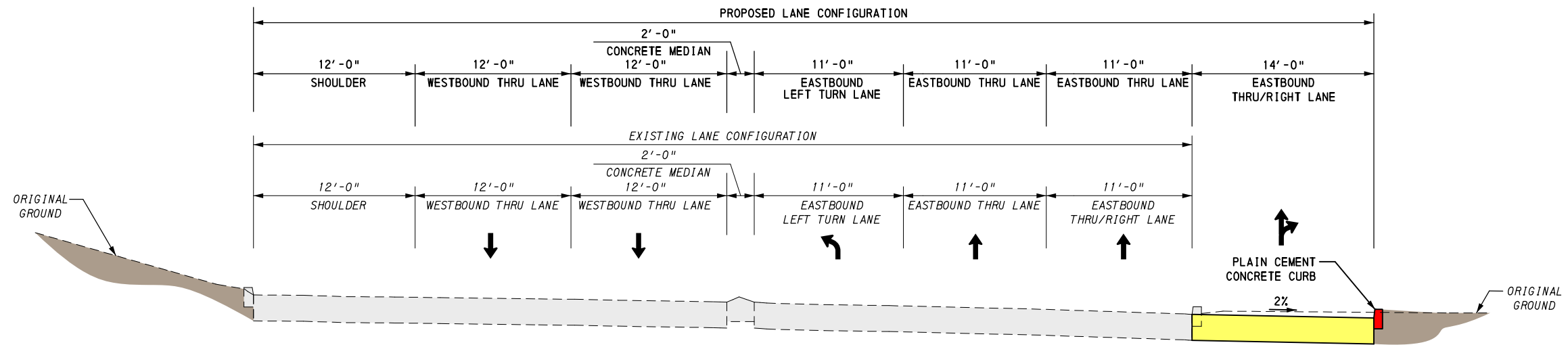
LANDSCAPED ISLAND
 TYPICAL SECTION
 SR 1 (BALTIMORE PIKE) AND STATE FARM DRIVE

- FULL DEPTH REPLACEMENT
- CONCRETE CURB/ISLAND
- LANDSCAPED ISLAND
- EXISTING PAVEMENT





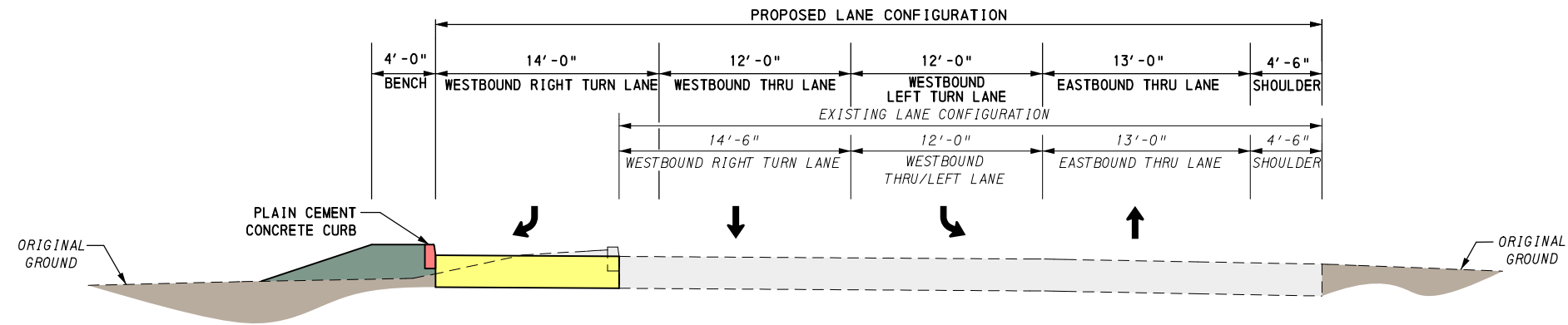
SR 0202 (WILMINGTON PIKE)
 TYPICAL SECTION
 SOUTH OF SR 1 (BALTIMORE PIKE)
 FACING SOUTH



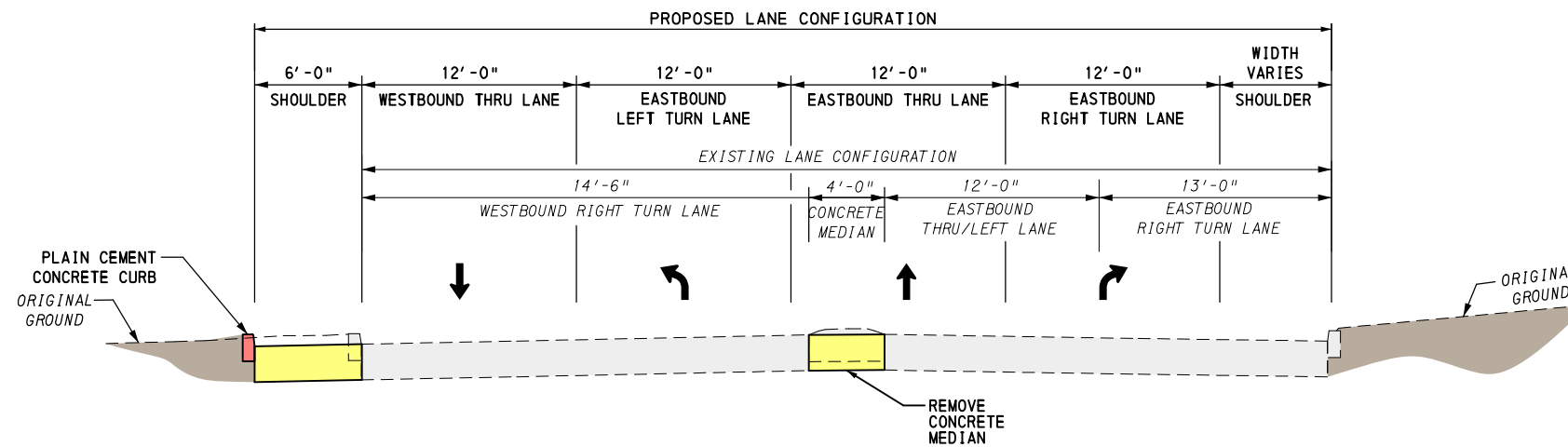
SR 0001 (BALTIMORE PIKE)
 TYPICAL SECTION
 WEST OF SR 0202 (WILMINGTON PIKE)
 FACING EAST

- FULL DEPTH REPLACEMENT
- CONCRETE CURB/ISLAND
- LANDSCAPED ISLAND
- EXISTING PAVEMENT





T-483 (STATE FARM DR)
TYPICAL SECTION
 AT SR 202 (WILMINGTON PIKE) INTERSECTION
 FACING EAST



T-419 (BRANDYWINE DR)
TYPICAL SECTION
 AT SR 202 (WILMINGTON PIKE) INTERSECTION
 FACING EAST

- FULL DEPTH REPLACEMENT
- CONCRETE CURB/ISLAND
- LANDSCAPED ISLAND
- VEGETATED SLOPE
- EXISTING PAVEMENT

