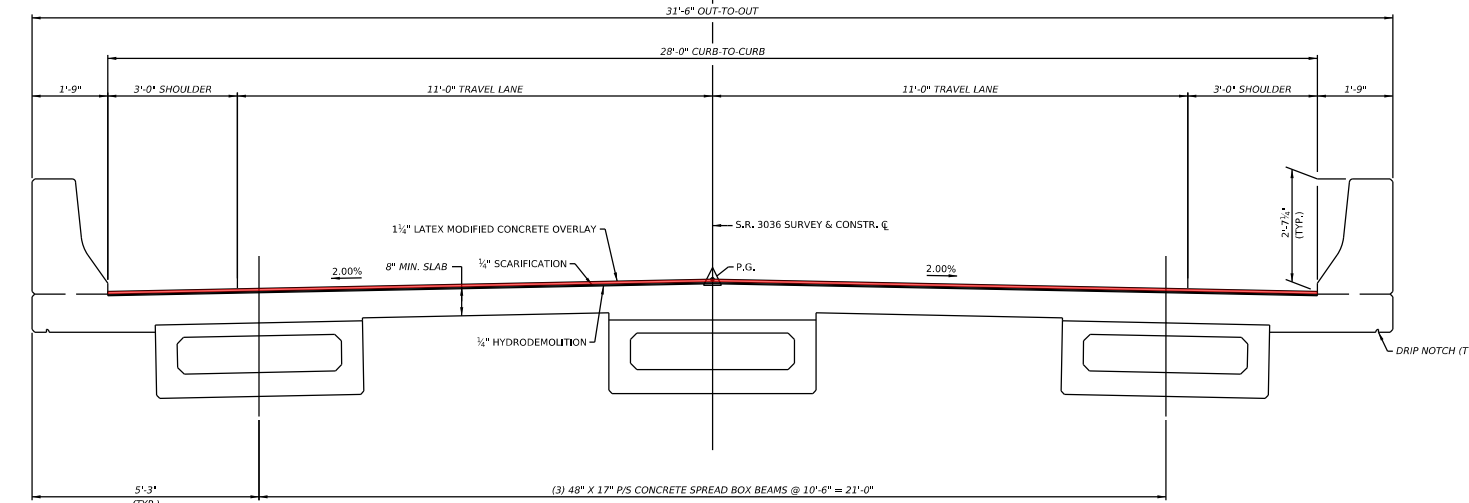
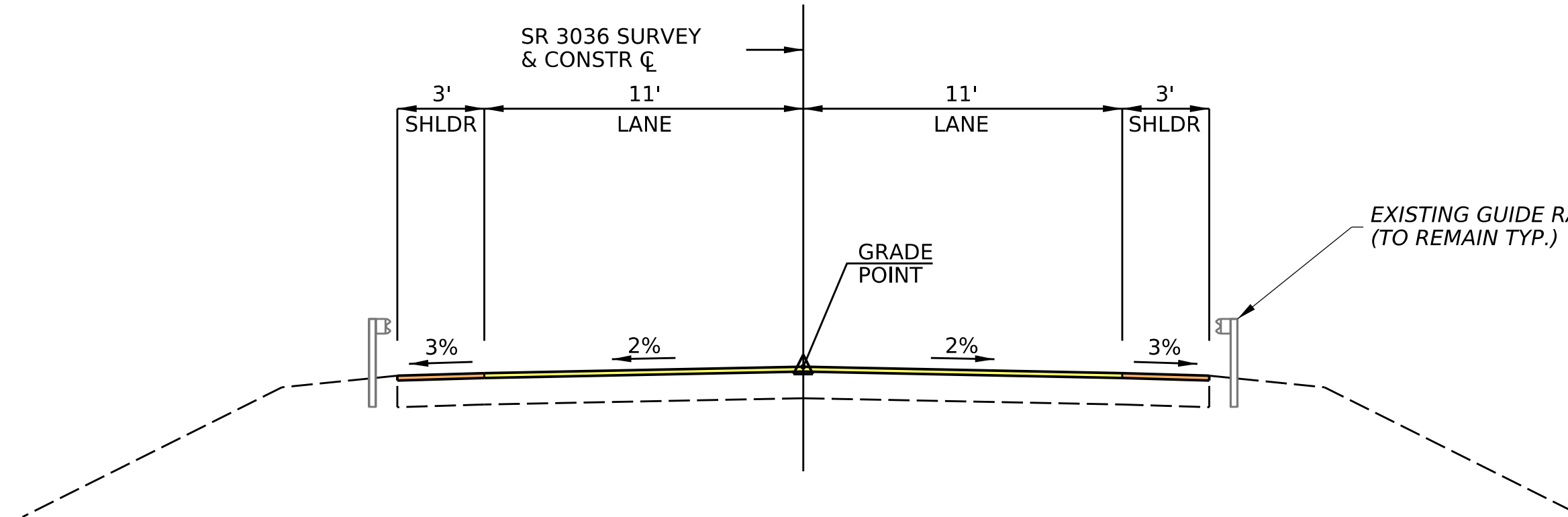


3-FEB-2025 08:40

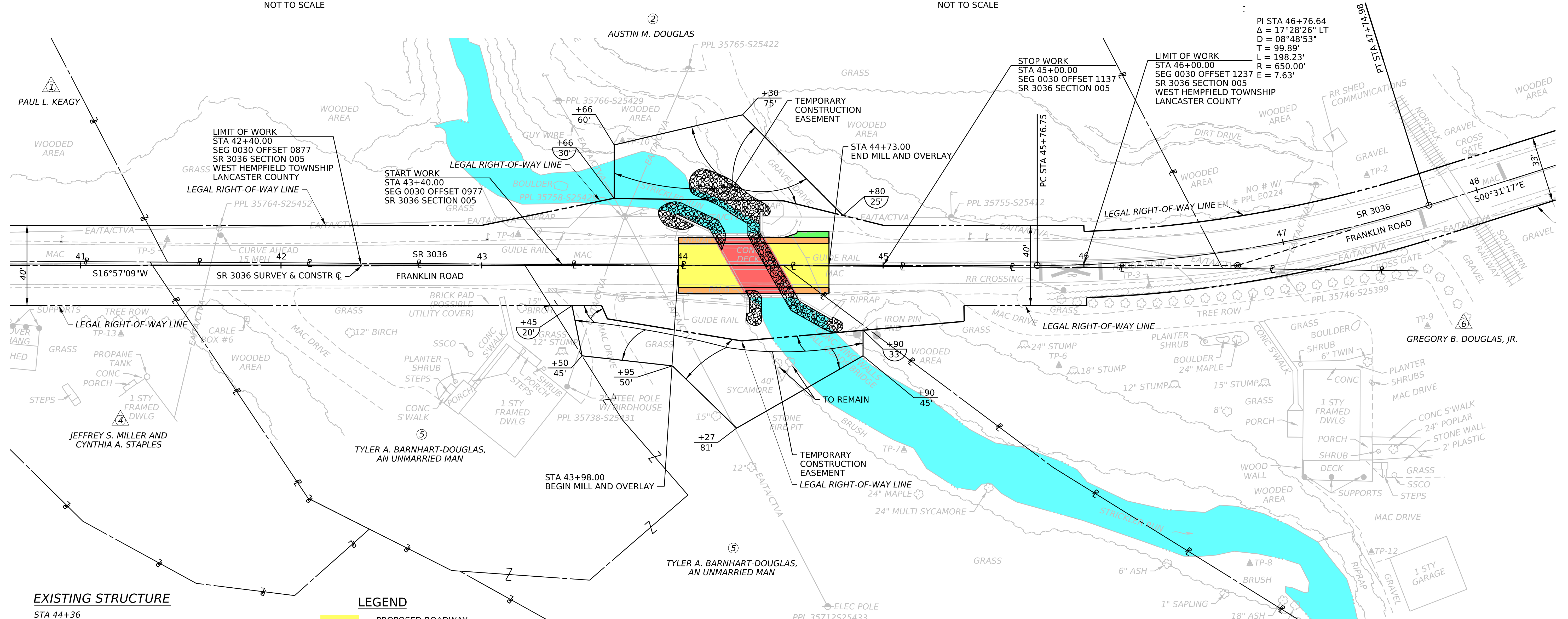
DISTRICT	COUNTY	ROUTE	SECTION	SHEET		
8-0	LANCASTER	3036	005	1 OF 1		
WEST HEMPFIELD TOWNSHIP						
REV NO	REVISIONS			DATE	BY	APPD



SR 3036 BRIDGE TYPICAL SECTION
NOT TO SCALE



SR 3036 ROADWAY TYPICAL SECTION
NOT TO SCALE

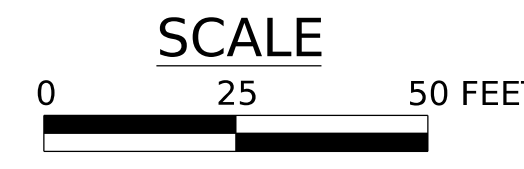


PI STA 46+76.64
 $\Delta = 17^\circ 28' 26''$ LT
 $D = 08^\circ 48' 53''$
 $T = 99.89'$
 $L = 198.23'$
 $R = 650.00'$
 $E = 7.63'$

EXISTING STRUCTURE
 STA 44+36
 SINGLE SPAN P/S CONCRETE SPREAD BOX BEAM BRIDGE
 SPAN = 25'-9"
 UNDERCLEARANCE = 8'-2"
 SKEW = 60°
 CLEAR ROADWAY = 28'-0"

PROPOSED STRUCTURE
 STA 44+36
 SINGLE SPAN P/S CONCRETE SPREAD BOX BEAM BRIDGE
 SPAN = 425'-9"
 UNDERCLEARANCE = 8'-2"
 SKEW = 60°
 CLEAR ROADWAY = 28'-0"
 STRUCTURE NO: S-42604

- LEGEND**
- PROPOSED ROADWAY MILL AND OVERLAY
 - PROPOSED SHOULDER MILL AND OVERLAY
 - PROPOSED STRUCTURE OVERLAY
 - DRIVEWAY ADJUSTMENT
 - WATER/STREAM
 - ROCK, CLASS R-8 CHOKED WITH ROCK, CLASS R-4



ANTICIPATED CONSTRUCTION 2027

PRELIMINARY PLAN
SR 3036, SECTION 005
FRANKLIN ROAD OVER STRICKLER RUN
WEST HEMPFIELD TOWNSHIP
LANCASTER COUNTY