

2025 D12 HYDRO/LATEX BRIDGE DECK PRESERVATION

SCOPE OF WORK

The scope of this job is to install latex modified concrete overlays after performing hydrodemolition to the deteriorated bridge decks. This process is calibrated at each work site to remove a prescribed depth of the concrete and any damaged areas, latex modified concrete overlays will then be installed at each site to restore the decks and provide a new surface. Beyond a new ride surface, latex modified concrete also has lower permeability, greater flexibility, higher bond strength, and more durability compared to traditional concrete. This process has been successful in our district and other States. Other various repairs including approach slabs, concrete repairs, and other miscellaneous construction will also take place. Work will be conducted at six locations listed below, to extend the life of the structures.

Locations are as follows:

- Route 119, SECTION 17M, in Westmoreland County, New Stanton Borough
- Route 119, SECTION 18M, in Westmoreland County, New Stanton Borough
- Route 217, SECTION 01M, in Westmoreland County, Derry Township
- Route 993, SECTION 05M, in Westmoreland County, Irwin Borough
- Route 2020, SECTION 07M, in Washington County, West Bethlehem Township
- Route 4051, SECTION 01M, in Washington County, Canton Township

A combination of short-term detours and single lane closures will be used to complete this work. Roadside notifications will be provided a minimum of 14 days prior to the implementation of any detour. When possible, structures will remain open to traffic under single lane closure.

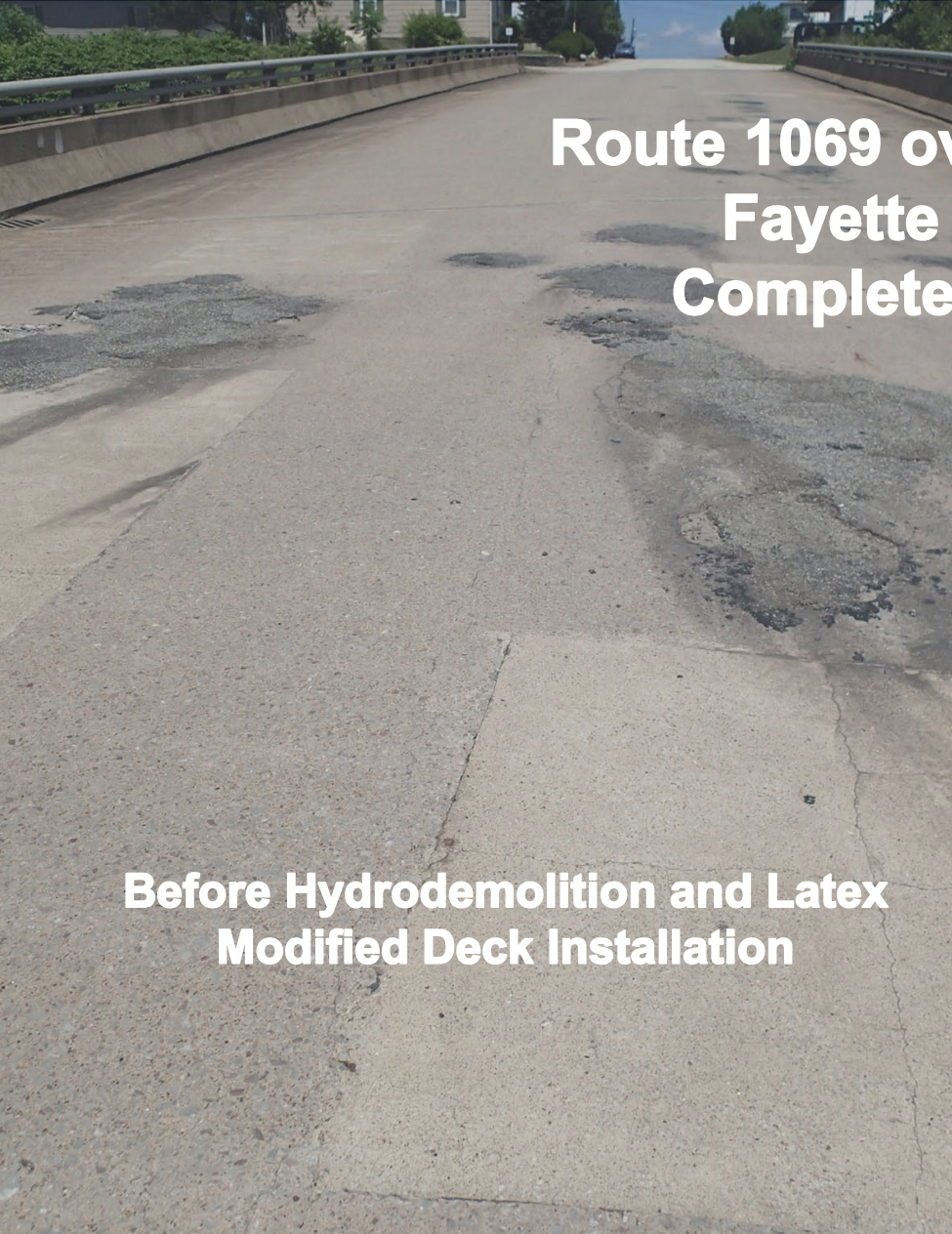
Before Hydrodemolition and Latex
Modified Deck Installation

Route 1069 over Route 119 Fayette
County
Completed in 2023

After Hydrodemolition and Latex
Modified Deck Installation

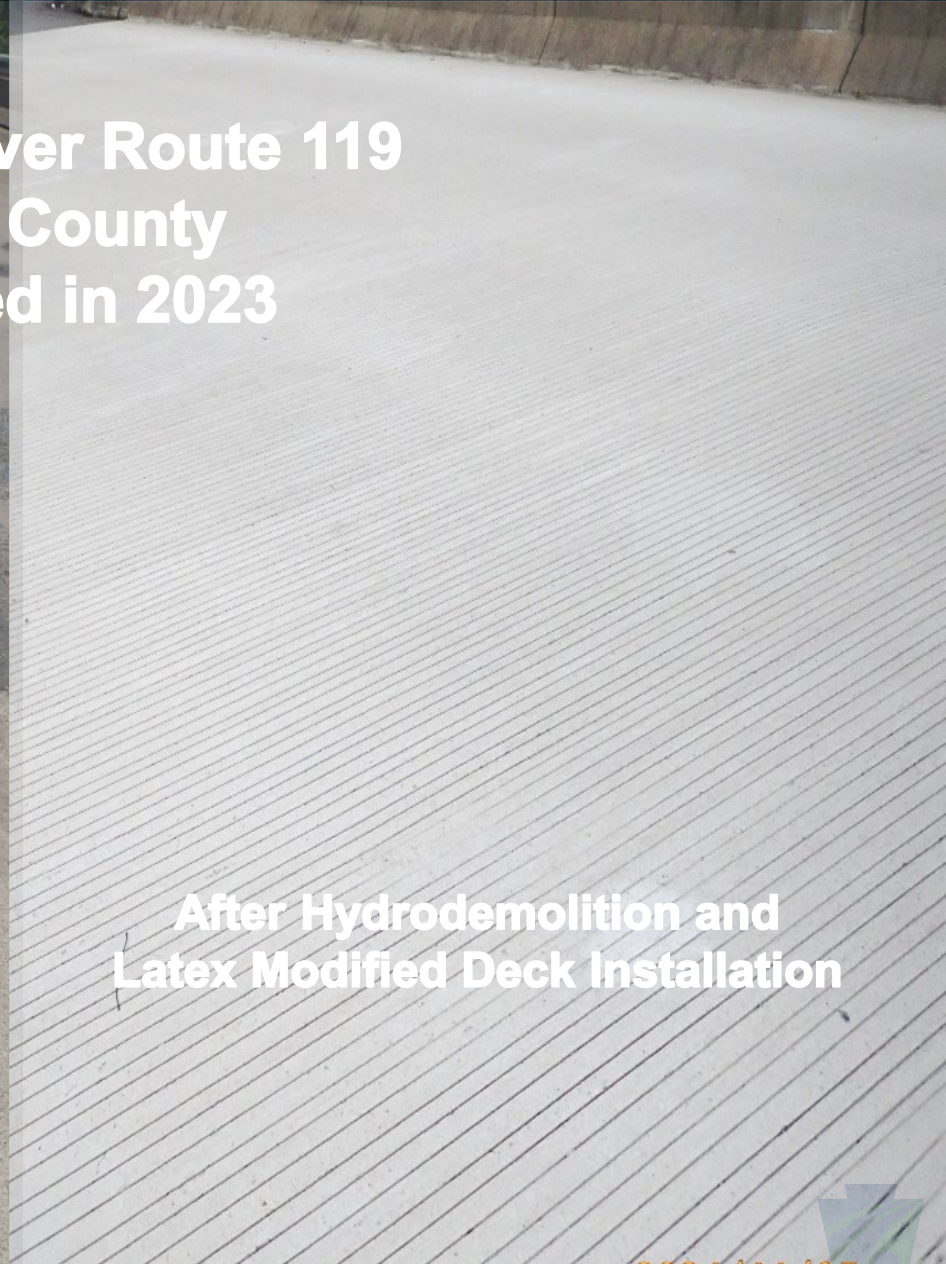


BEFORE AND AFTER



**Route 1069 over Route 119
Fayette County
Completed in 2023**

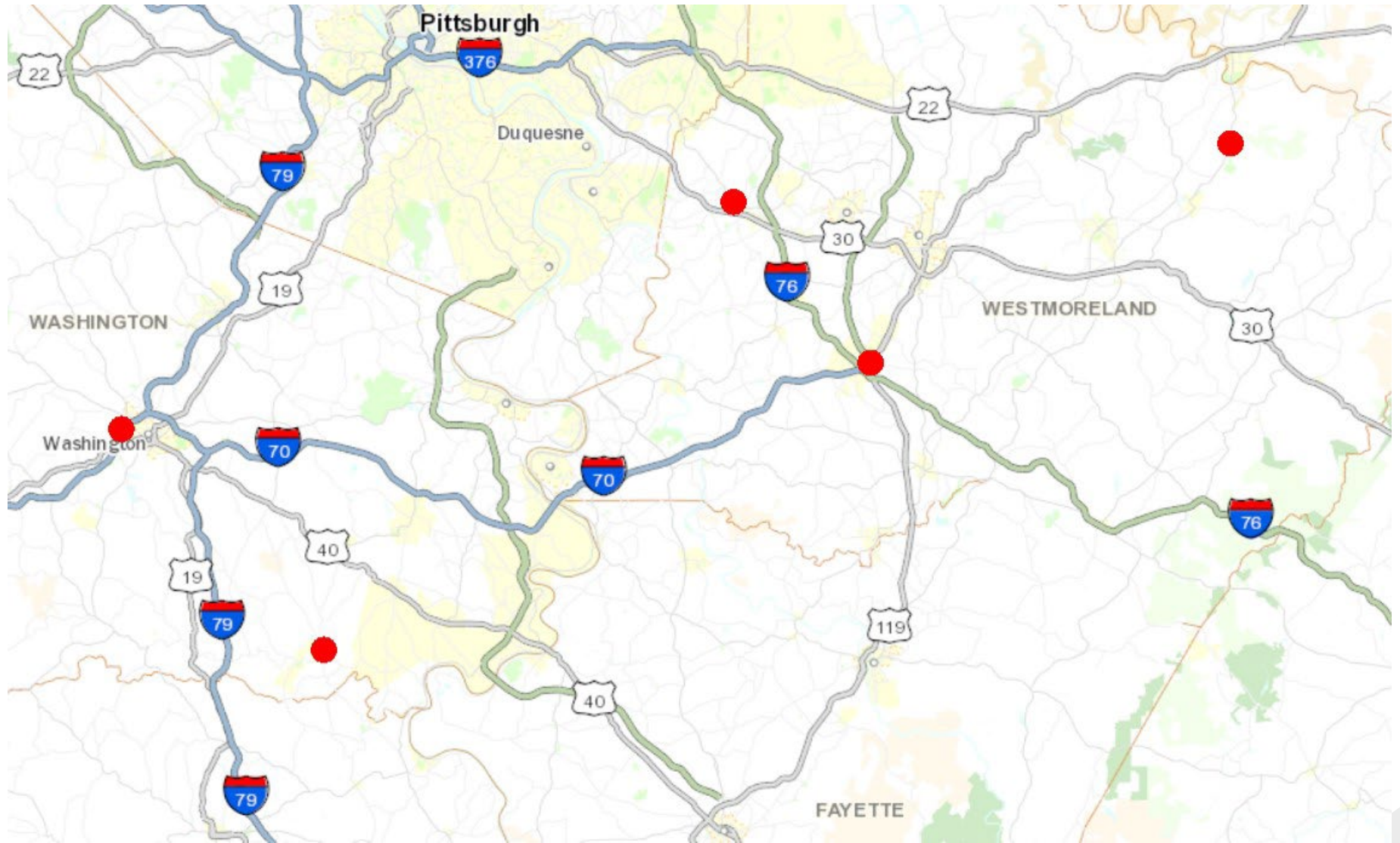
**Before Hydrodemolition and Latex
Modified Deck Installation**



**After Hydrodemolition and
Latex Modified Deck Installation**



PROJECT LOCATION MAP

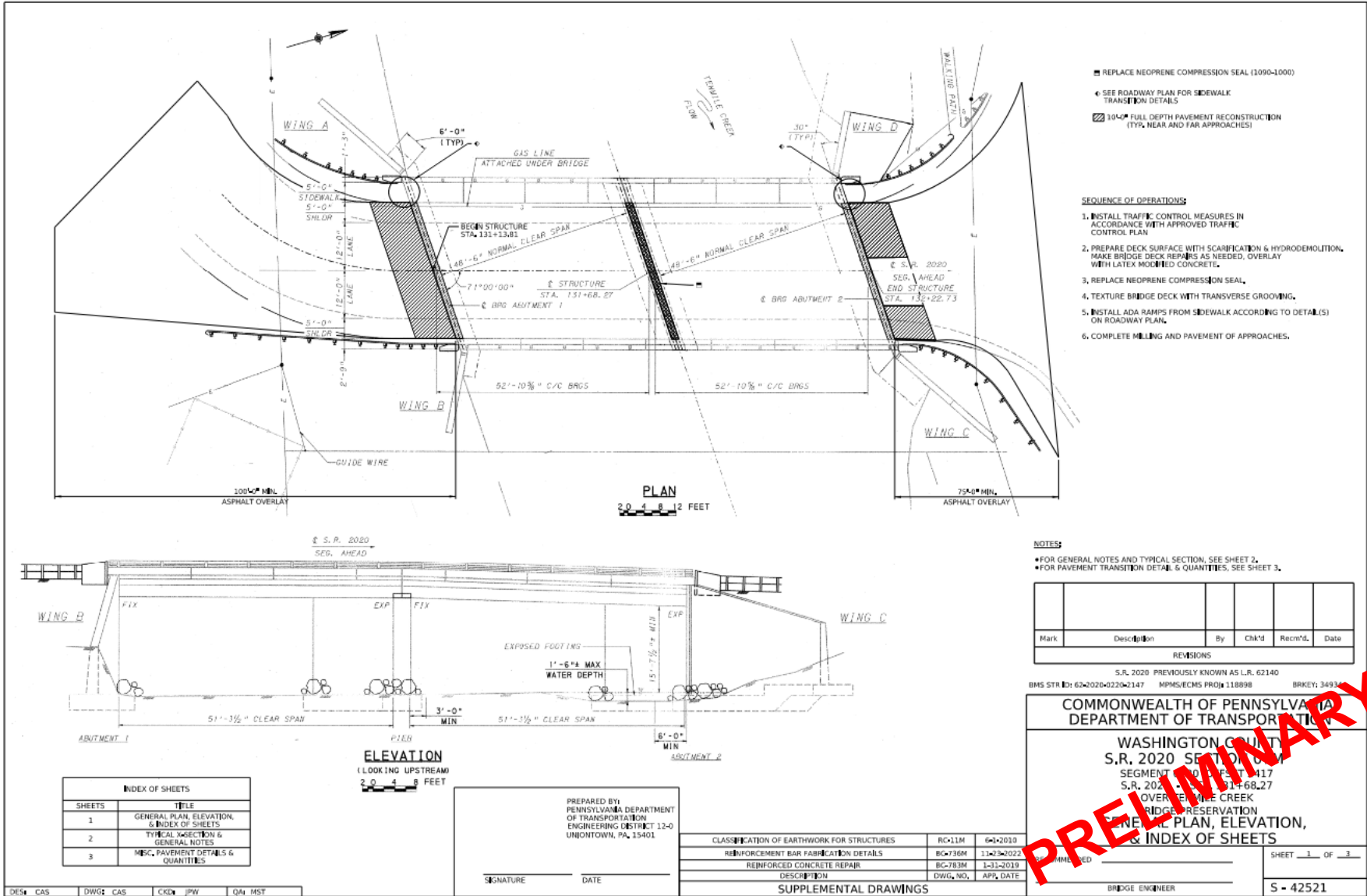


ROUTE 2020

Route 2020 over Little
Ten Mile Creek,
Marianna



PRELIMINARY ROUTE 2020



PRELIMINARY



ROUTE 4051

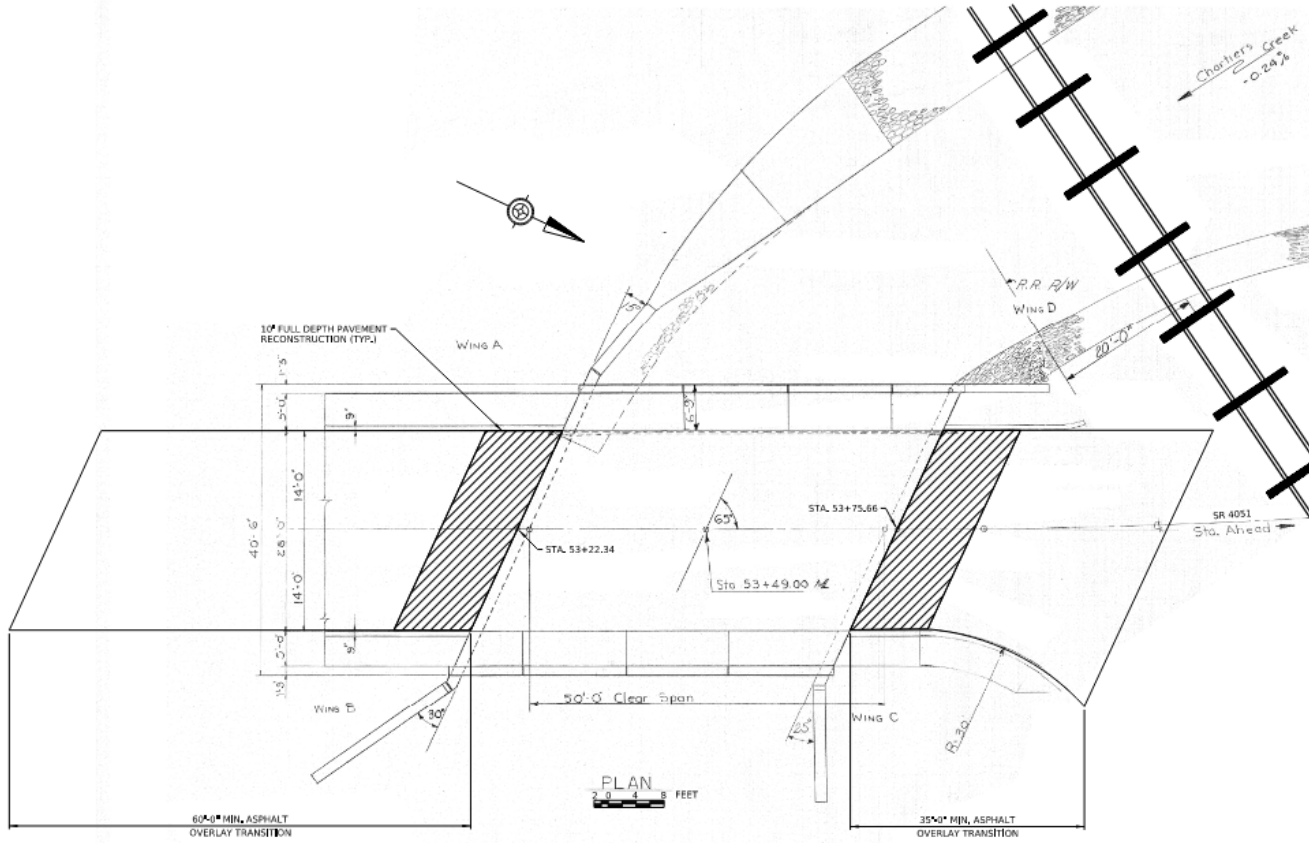
Route 4051 Over
Chartiers Creek, Canton
Township

Sep 19, 2024 at 9:46:29 AM
1020 Jessop Pl
Washington PA 15301
United States



PRELIMINARY ROUTE 4051

INDEX OF SHEETS	
SHEETS	TITLE
1	GENERAL PLAN & INDEX OF SHEETS
2	TYPICAL X-SECTION, ELEVATION, & MISC. PAVEMENT DETAILS
3	GENERAL NOTES & QUANTITIES



NOTES:

- FOR GENERAL NOTES AND QUANTITIES, SEE SHEET 3.
- FOR TYPICAL X-SECTION, ELEVATION & PAVEMENT TRANSITION DETAIL, SEE SHEET 2.

Mark	Description	By	Ch'd	Rec'd	Date
REVISIONS					

SR, 4051 PREVIOUSLY KNOWN AS LA, 62159
 BMS STR ID# 624051-0020-2072 MPMS/ECMS PROJ# 11898 BRKEY# 35219

COMMONWEALTH OF PENNSYLVANIA
DEPARTMENT OF TRANSPORTATION

WASHINGTON COUNTY
S.R. 4051 SECTION 01M
 SEGMENT 02 BRIDGE 12072
 S.R. 4051 STA. 53+49.00
 CHARLES' CREEK
 BRIDGE PRESERVATION

GENERAL PLAN & INDEX OF SHEETS

SHEET 1 OF 3

BRIDGE ENGINEER **S - 42585**

- SEQUENCE OF OPERATIONS:**
1. INSTALL TRAFFIC CONTROL MEASURES IN ACCORDANCE WITH APPROVED TRAFFIC CONTROL PLAN.
 2. PREPARE DECK SURFACE WITH SCARIFICATION & HYDRODEMOLITION. MAKE BRIDGE DECK REPAIRS AS NEEDED, OVERLAY WITH LATEX MODIFIED CONCRETE.
 3. TEXTURE BRIDGE DECK WITH TRANSVERSE GROOVING.
 4. COMPLETE MILLING AND PAVEMENT OF APPROACHES.

PREPARED BY:
 PENNSYLVANIA DEPARTMENT
 OF TRANSPORTATION
 ENGINEERING DISTRICT 12-0
 HUNTSTOWN, PA, 15401

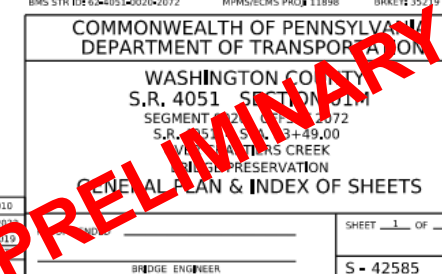
SIGNATURE _____ DATE _____

CLASSIFICATION OF EARTHWORK FOR STRUCTURES	RC-13M	6-2010
REINFORCEMENT BAR FABRICATION DETAILS	BC-736M	11-2-2010
REINFORCED CONCRETE REPAIR	BC-783M	1-5-2010
DESCRIPTION	DWG. NO.	APP.

DES: CAS DWG: CAS CKD: JPW QA: MST

SUPPLEMENTAL DRAWINGS

BRIDGE ENGINEER

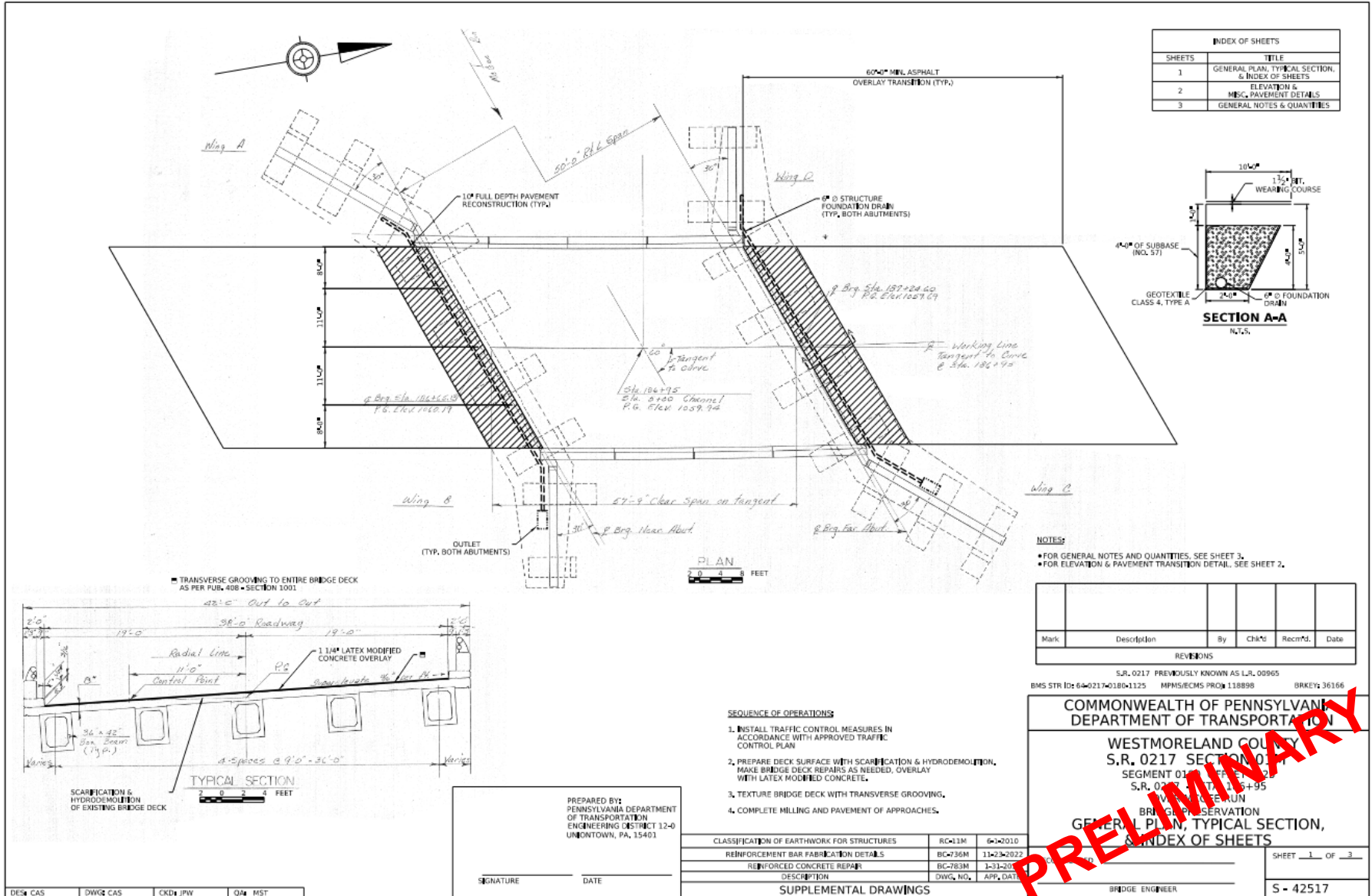


ROUTE 217

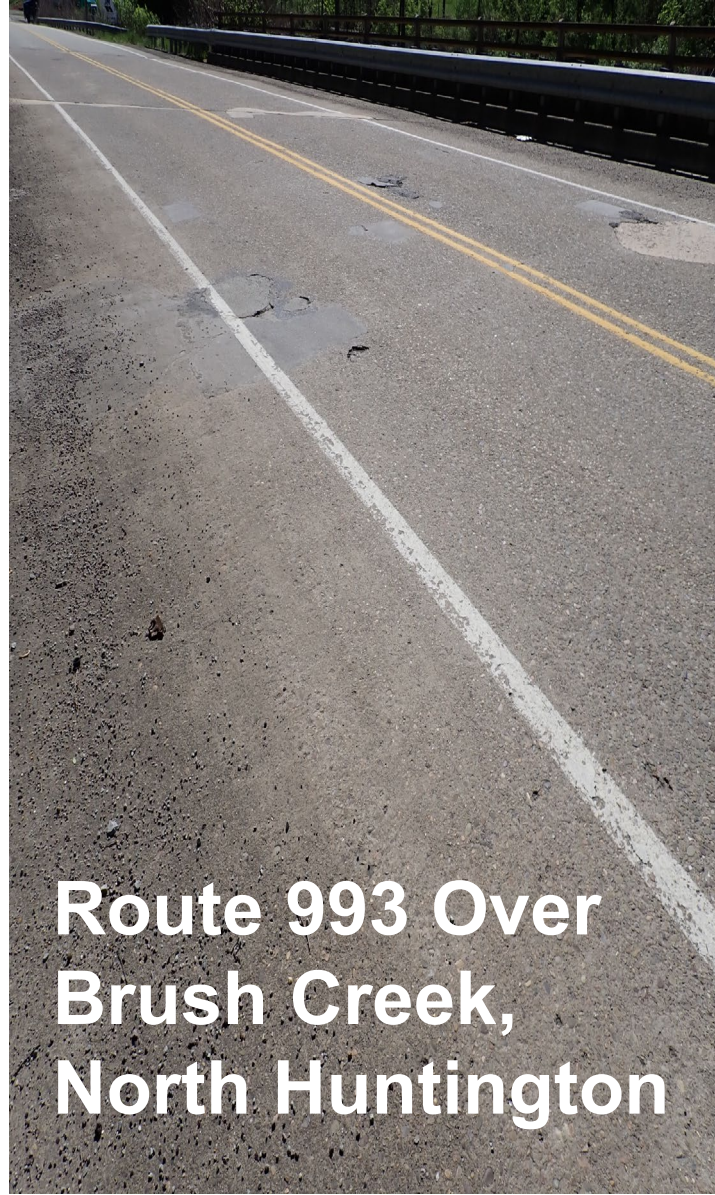
Route 217 Over McGee Run,
Derry Township



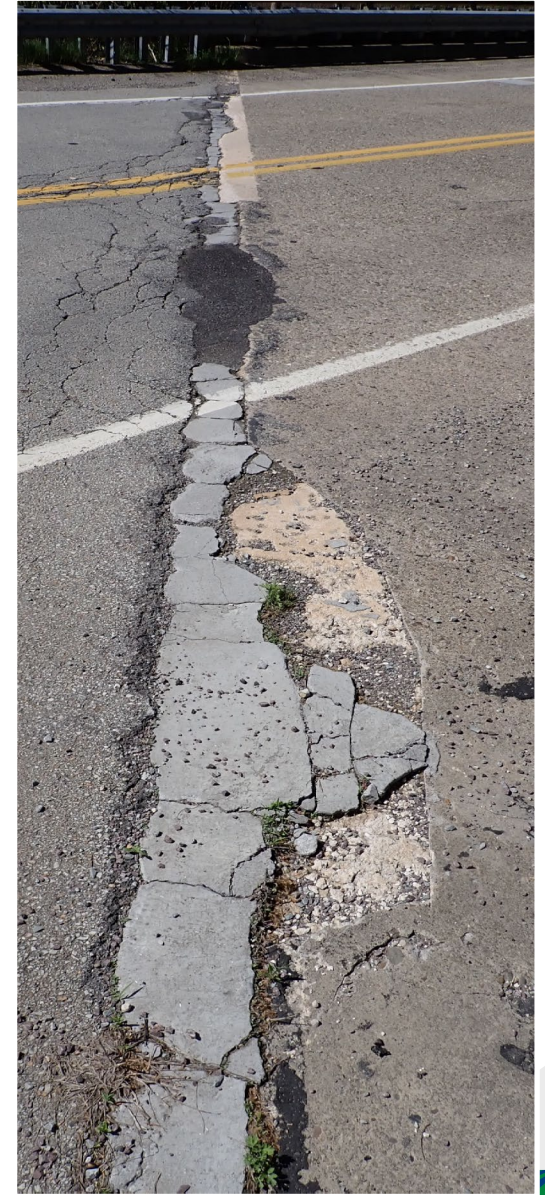
PRELIMINARY ROUTE 217



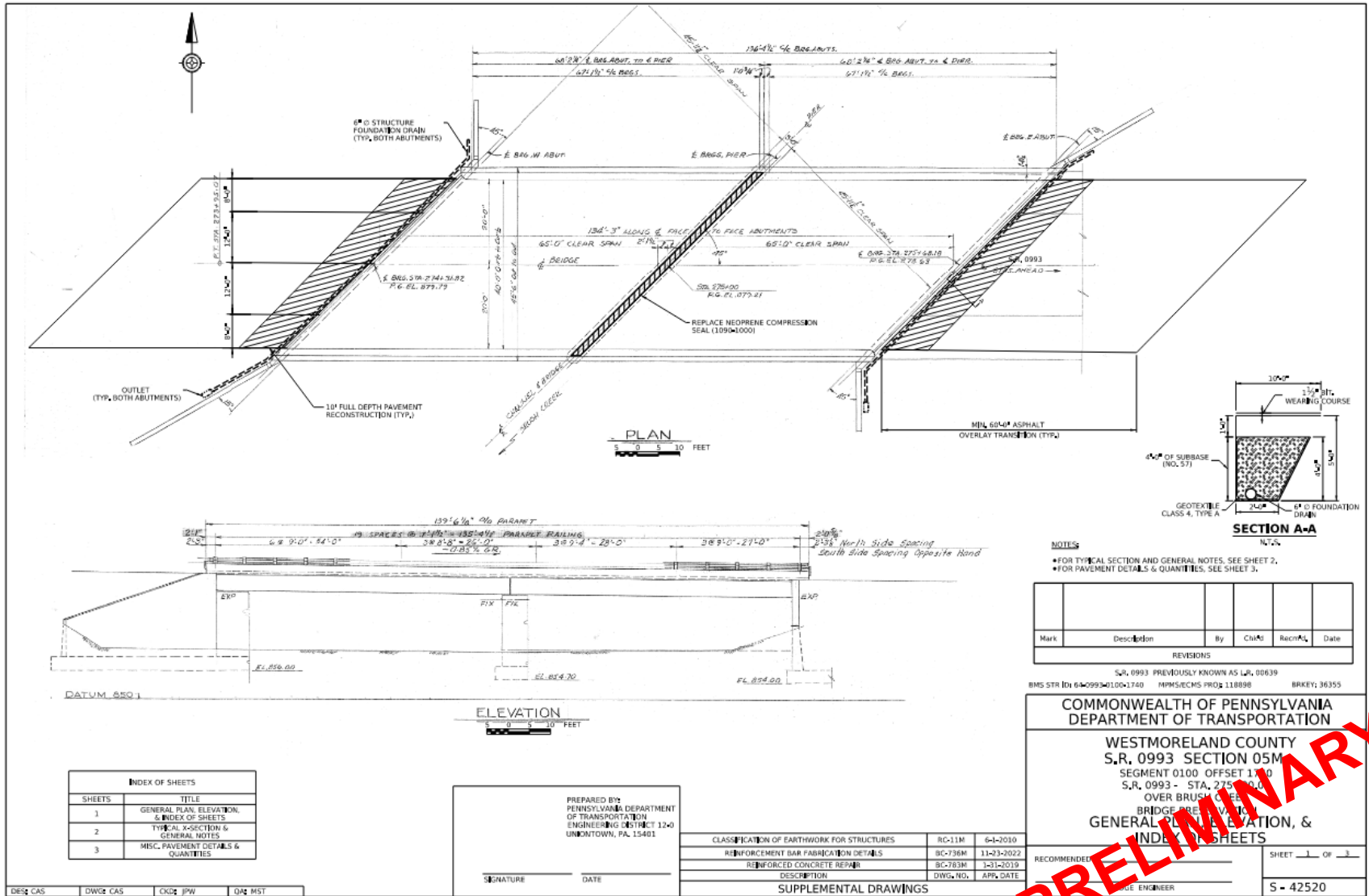
ROUTE 993



Route 993 Over
Brush Creek,
North Huntington



PRELIMINARY ROUTE 993



PRELIMINARY

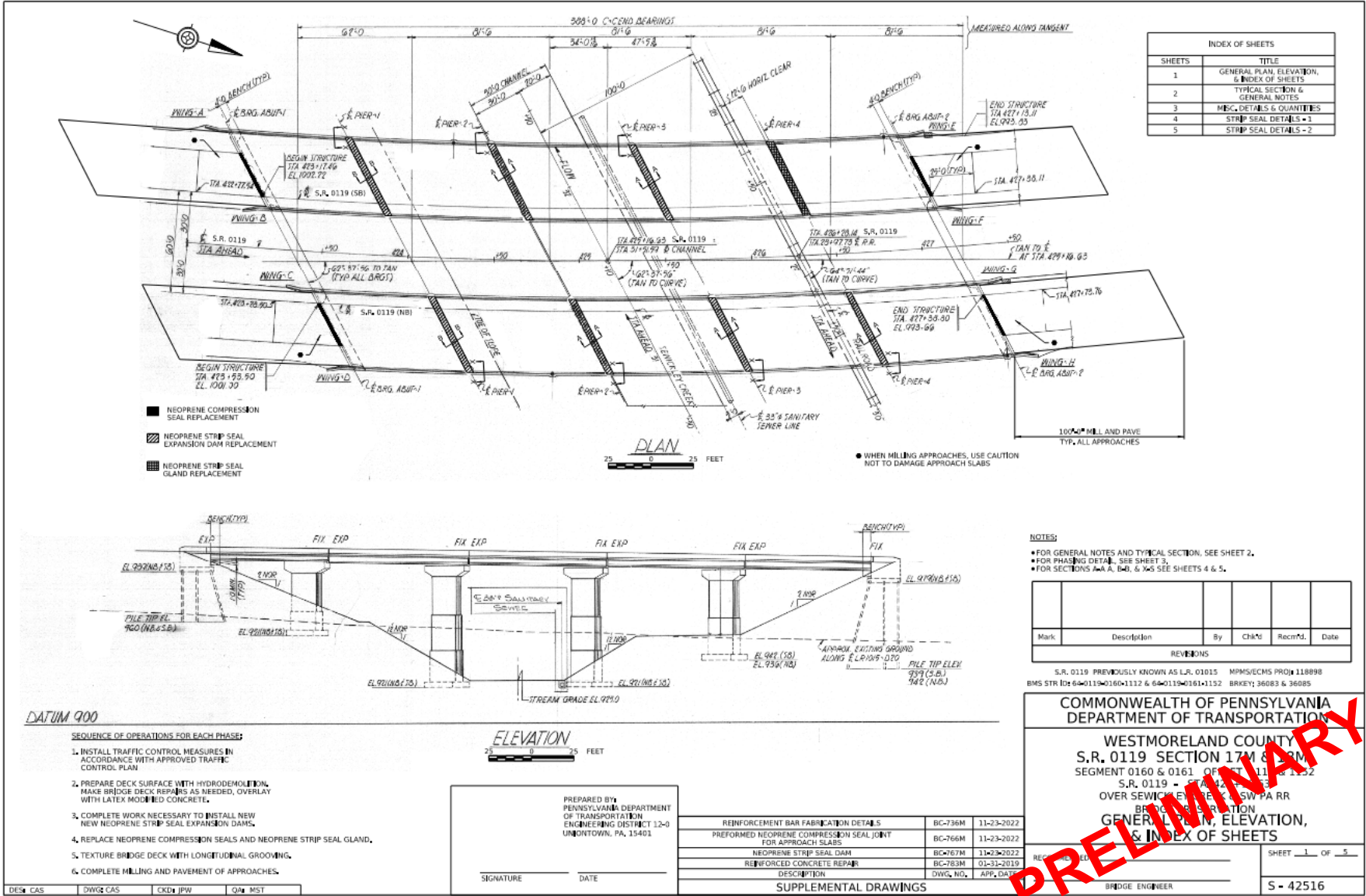


ROUTE 119

Route 119 over
Sewickley Creek,
New Stanton Borough



PRELIMINARY ROUTE 119



SHEETS	TITLE
1	GENERAL PLAN, ELEVATION, & INDEX OF SHEETS
2	TYPICAL SECTION & GENERAL NOTES
3	MISC. DETAILS & QUANTITIES
4	STRIP SEAL DETAILS - 1
5	STRIP SEAL DETAILS - 2

NOTES:
• FOR GENERAL NOTES AND TYPICAL SECTION, SEE SHEET 2.
• FOR PHASING DETAILS, SEE SHEET 3.
• FOR SECTIONS A-A, B-B, & Y-Y SEE SHEETS 4 & 5.

Mark	Description	By	Chk'd	Rec'd	Date
REVISIONS					

S.R. 0119 PREVIOUSLY KNOWN AS LR, 01015 MPM/ECMS PROJ 118898
BMS STR ID# 64-0119-0160-1112 & 64-0119-0161-1152 BKKEY: 36083 & 36085

COMMONWEALTH OF PENNSYLVANIA
DEPARTMENT OF TRANSPORTATION

WESTMORELAND COUNTY
S.R. 0119 SECTION 17M & 18M
SEGMENT 0160 & 0161 OF DIST. 11 & 1352
S.R. 0119 - BRIDGE # 1115
OVER SEWICKLEY CREEK, SW PA RR
BRIDGE RECONSTRUCTION
GENERAL PLAN, ELEVATION,
& INDEX OF SHEETS

DATE: _____	BY: _____	CHK'D: _____	REC'D: _____	SHEET 1 OF 5
BRIDGE ENGINEER				S - 42516

PRELIMINARY



CONTACT INFORMATION

Project Manager

James Wolfe

724-430-4420

jameswolfe@pa.gov

Press Officer

Laina Aquiline

724-415-3748

laquiline@pa.gov

