

# **2024 DISTRICT 10 SPRING OUTREACH MEETING**

# **2024 SPRING OUTREACH**

**BRIAN ALLEN, P.E. –  
DISTRICT EXECUTIVE**

# WELCOME/INTRODUCTIONS

**BRIAN ALLEN, P.E., DISTRICT EXECUTIVE**

- **WELCOME**

**PAUL KOZA, P.E., ASSISTANT DISTRICT EXECUTIVE - CONSTRUCTION**

- **PROJECTS IN CONSTRUCTION**

**ALICE HAMMOND, P.E., ASSISTANT DISTRICT EXECUTIVE - DESIGN**

- **PROJECTS IN DESIGN**

**MIKE MATTIS, BUTLER COUNTY MAINTENANCE MANAGER**

- **COUNTY MAINTENANCE OVERVIEW**

**TINA GIBBS, DISTRICT COMMUNITY RELATIONS COORDINATOR**

- **WEBSITE RESOURCES AND SOCIAL MEDIA**



# **2024 SPRING OUTREACH**

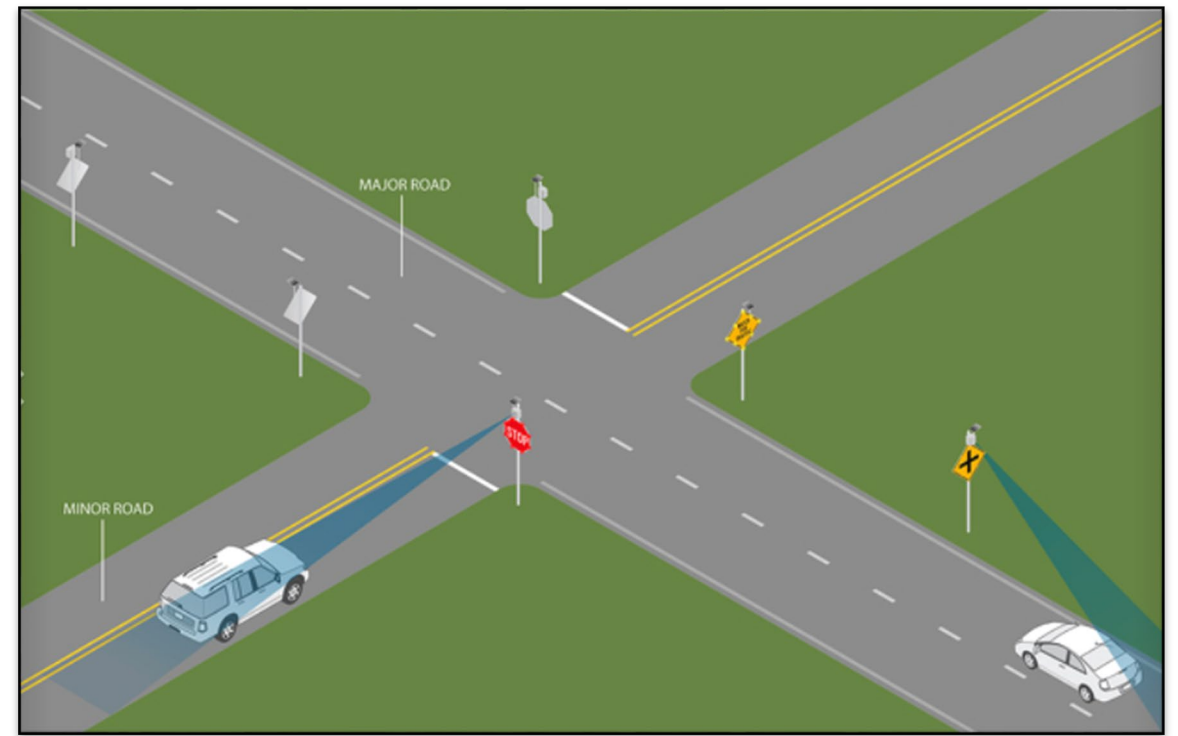
**PAUL F. KOZA, JR., P.E.  
ADE CONSTRUCTION**



# INTERSECTION ITS GROUP PROJECT

- ECMS # 117907
- Various Intersections:
  - Armstrong County: PA 85 & SR 2001 (Water Street), Rural Valley Borough
  - Butler County: PA 8 & SR 4010 (Branchton Road) – Slippery Rock Twp.
  - Butler County: SR 4010 (Branchton Road) & Harmony Road, Slippery Rock Twp.
  - Clarion County: US 322 & Bus Mong Road, Ashland Twp.
  - Indiana County: US 422 & PA 403, Pine Twp.
  - Jefferson County: US 322 & SR 1830, Pine Creek Twp.
- Cost: \$595,562
- Anticipated Completion: 1/14/25
- Contractor: Bronder Technical Services

- Installation of conflict warning devices



# 2024 DISTRICT 10 SMALL PAINT

- ECMS # 119740
- Cost: \$615,660
- Anticipated Completion: 5/31/25
- Prime Contractor: Oglesby Construction
- Paint Legends along various routes in Armstrong, Butler, Clarion, Indiana & Jefferson Counties



# 2024 DISTRICT RPM

- ECMS # 119739
- District wide
- Cost: \$154,968
- Anticipated Completion: 8/30/24
- Prime Contractor: Green Acres Contracting
- RPMs along various routes in Armstrong, Butler, Clarion, Indiana & Jefferson Counties





# 2024 COUNTY GUIDERAIL PROJECTS

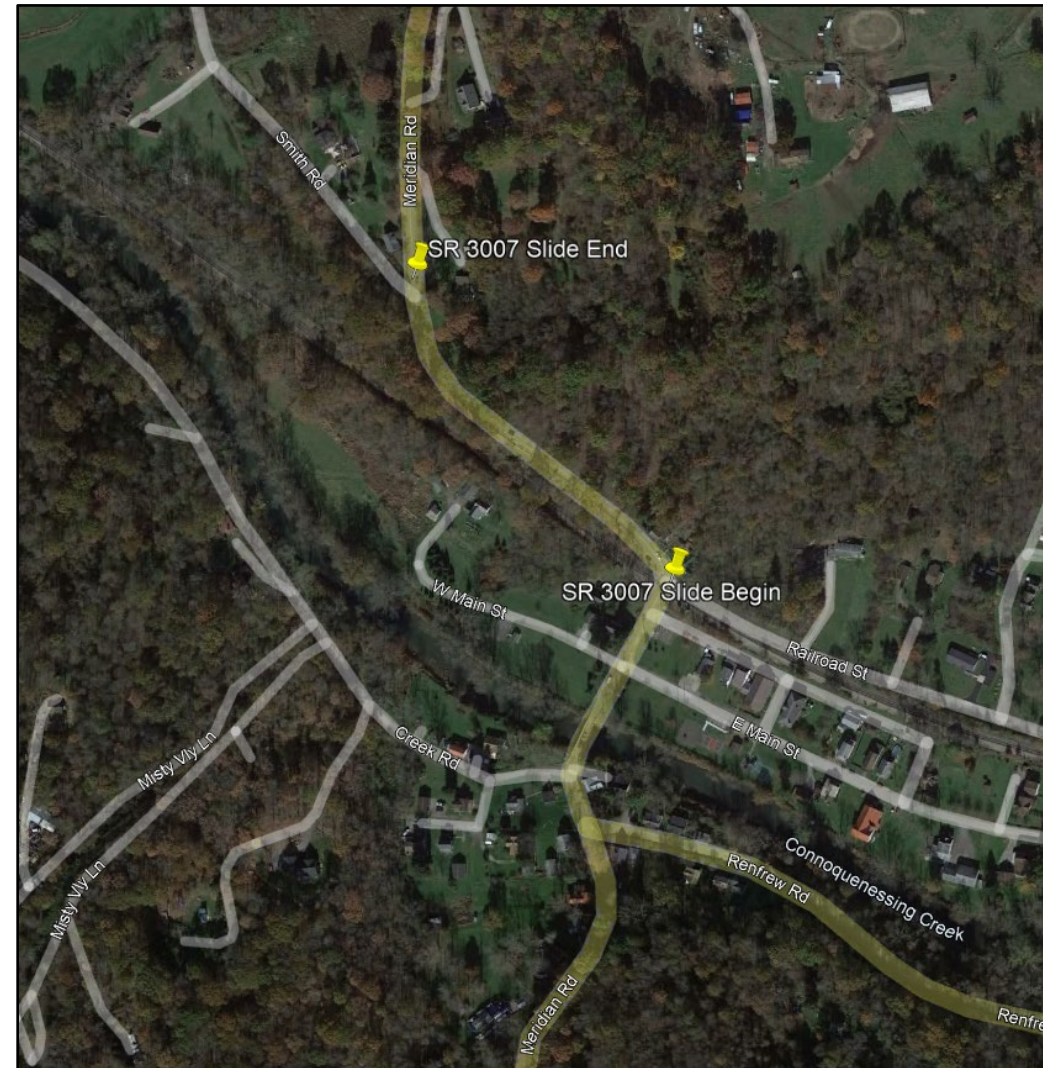
- ECMS # 119734, 119735, 119736, 119737, 119738
- County wide projects, various SRs
- Estimate: <\$1.0M per project
- Let Date: 05/09/2024
- Repair & replacement of guiderail





# SR 3007 SLIDE REPAIR

- ECMS # 119471
- SR 3007
- Penn Township
- Cost: \$685,000
- Anticipated Completion:  
5/31/2024
- Prime Contractor: Allison  
Park Contractors
- Renfrew Slide repairs from  
Railroad Street to Smith  
Road
- Detour for 28 days



# PORTERSVILLE BRIDGE

- ECMS # 98730
- PA 488
- Muddy Creek Township
- Cost: \$6,305,157
- Anticipated Completion: 6/17/2024
- Contractor: JF Shea Construction, Inc.
- Signs, drainage, epoxy overlay of bridge deck & paving





# GLADE MILLS EAST PM

- ECMS # 99527
- PA 228
- Middlesex Township
- Cost: \$3,410,961
- Anticipated Completion: 08/18/2024
- Prime Contractor: Glenn O. Hawbaker, Inc.
- Epoxy overlay of structure over railroad



# BUTLER BYPASS PHASE 2/LIONS ROAD BRIDGE

- ECMS # 114188
- US 422 & SR 3031(Lions Road) over US 422
- Franklin, Butler & Connoquenessing Townships
- Cost: \$9,094,241
- Anticipated Completion: 10/11/24
- Prime Contractor: Lindy Paving
- Roadway resurfacing from Duffy Road overpass to Old Route 422
- Nighttime & weekend detours for Lyndora ramps for paving
- SR 3031(Lions Road Bridge) Detour 6/18/24 to 8/20/24



Lions Road Bridge





# PA 356 OVER TRIB TO COAL RUN

- ECMS # 24759
- PA 356 (Freeport Road) over Tributary to Coal Run
- Summit Township
- Cost: \$1,985,000
- Anticipated Completion: 12/11/24
- Prime Contractor: Allison Park Contractors
- Bridge Replacement
- Phased Construction



# I-79 SENECA RAMPS - TSMO

- ECMS # 116661
- I-79 NB & SB, just north of Tollgate School Road and south of Stanford Road
- Jackson Township
- Cost: \$558,878
- Anticipated Completion: 12/13/24
- Prime Contractor: Bruce – Merrilees Electric Company
- 2 message boards
- CCTV camera



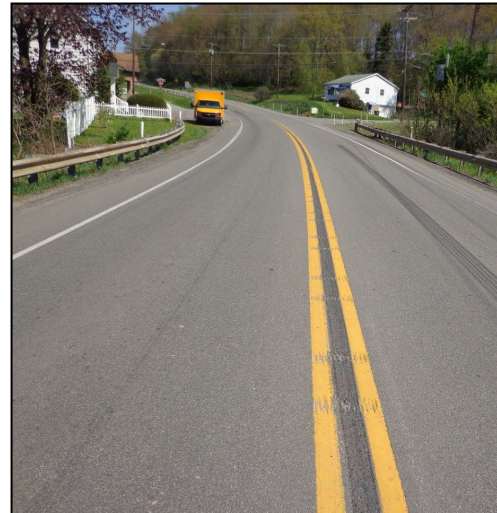


# CALLERY GROUP BRIDGES

- ECMS # 89972
- SR 3014 & SR 3015
- Callery Borough & Adams Township
- Cost: \$4,067,824
- Anticipated Completion: 10/8/25
- Prime Contractor: Chivers Construction Company
- Bridge replacements
- Detour SR 3014 (Callery Bridge) in 2024
- SR 3015 (Breakneck Creek) phased construction in 2025



**Callery Bridge**

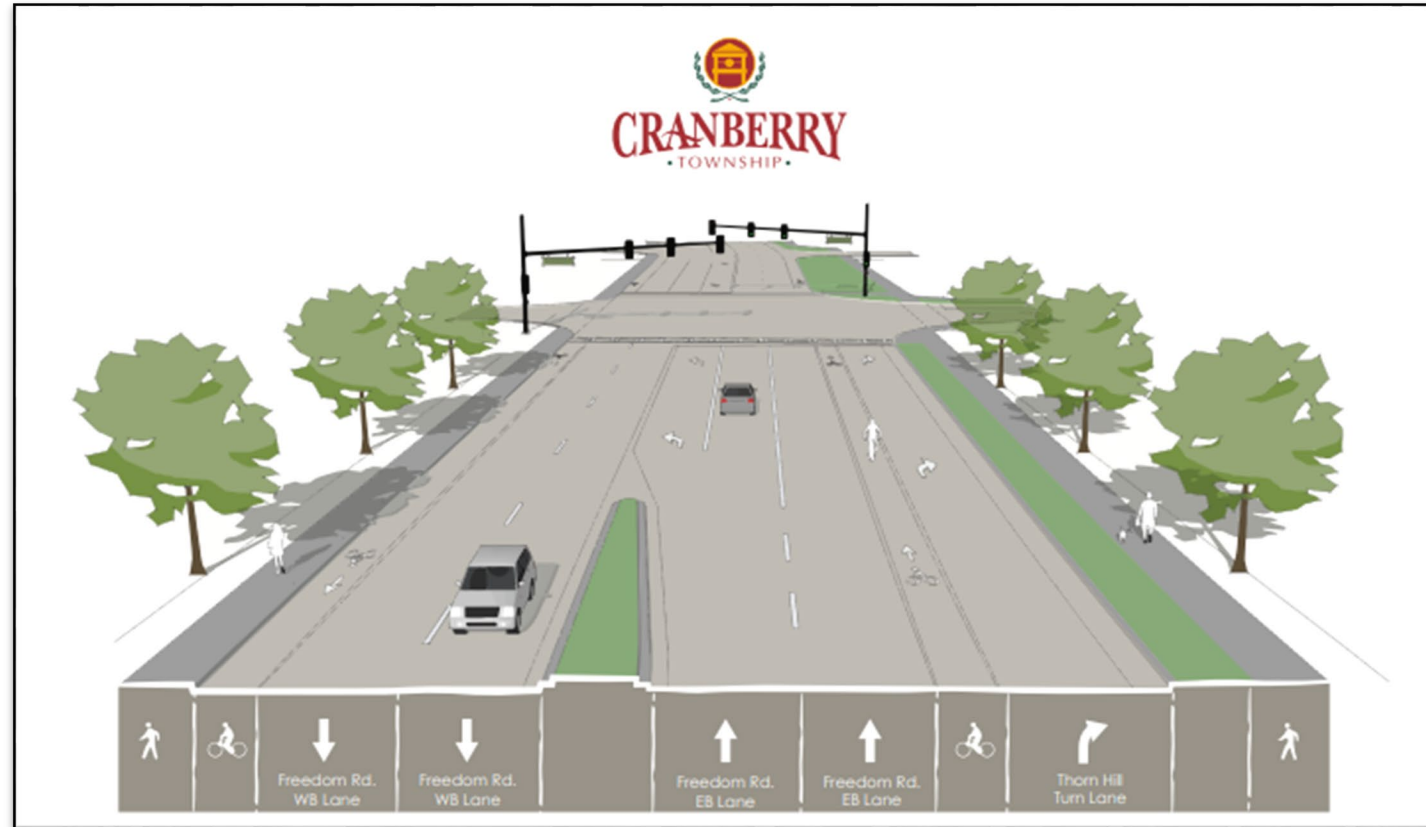


**Breakneck Creek**



# FREEDOM RD (BEAVER CO. TO HAINE SCHOOL ROAD)

- ECMS # 112933
- SR 3020
- Cranberry Township
- Cost: \$19,205,464
- Anticipated Completion: 11/17/2025
- Prime Contractor: Gulisek Construction, LLC
- Constructing of turning lanes, paving, drainage, sidewalks & safety improvements





# PA 68 CORRIDOR IMPROVEMENT

- ECMS # 106568
- PA 68
- Connoquenessing & Butler Townships
- Cost: \$18,728,000
- Anticipated Completion: 11/19/2025
- Prime Contractor: Glenn O. Hawbaker, Inc.
- Signal replacement, turn lanes & safety improvements
- Detours:
  - SR 3002 - 11 days
  - SR 3007 - 16 days
  - Kriess Road - 9 days
  - Stevenson Road - 21 days



# THREE DEGREE ROAD INTERSECTION

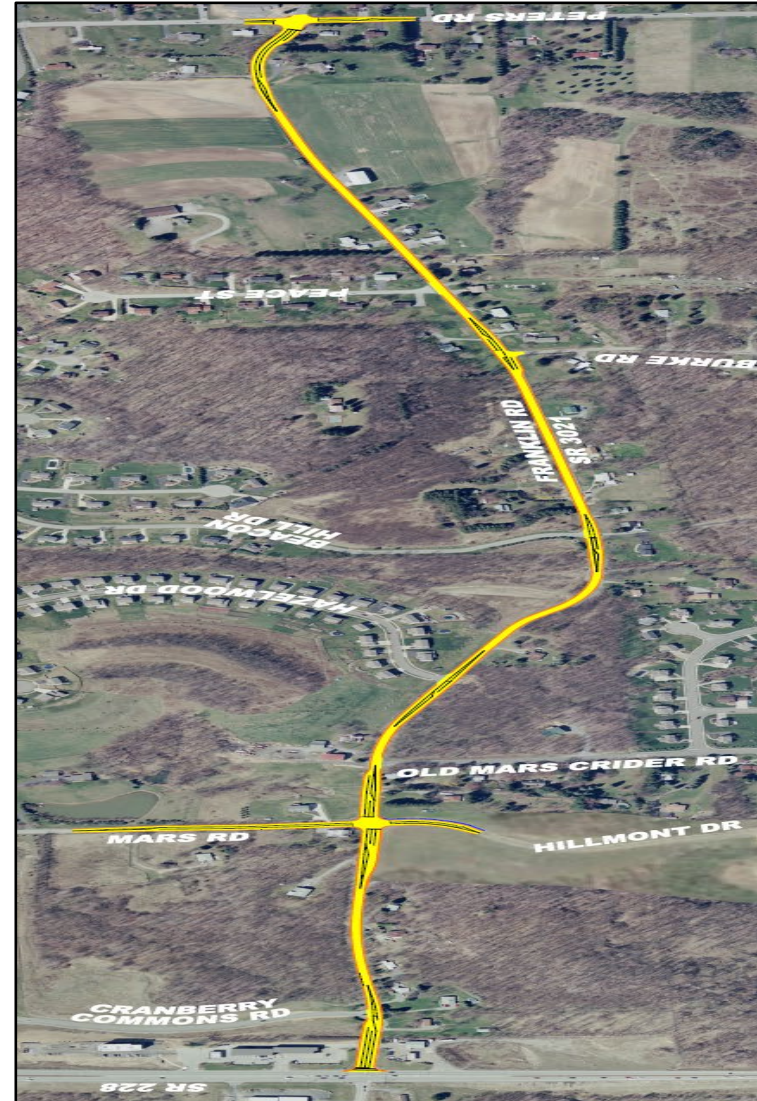
- ECMS # 91286
- PA 228
- Adams Township
- Cost: \$55,960,639
- Anticipated Completion: 11/23/2026
- Prime Contractor: Independence Excavating, Inc.
- Detours:
  - Marland Drive for 2 days in April/May (weekend)
  - Brickyard Road for 30 days in May/June
  - T-382 Three Degree Road north of intersection at SR 228 in July





# SR 3021 CORRIDOR IMPROVEMENTS

- ECMS # 110783
- SR 3021 (Franklin Road) – PA 228 North to Peters Road
- Cranberry Township
- Cost: \$19,188,188
- Anticipated Completion: 11/8/27
- Prime Contractor: Glenn O. Hawbaker, Inc.
- Safety Improvement includes shoulder widening, new drainage, intersection improvements & turn lanes
- Detours during construction



# GROUP 102-24-SIA

- ECMS # 119731
- PA 8, PA 268, SR 3022 & SR 3018
- Cost: \$5,229,008
- Anticipated Completion: 9/13/24
- Prime Contractor: Commercial Asphalt Supply Inc. DBA Shields Asphalt Paving, Inc.
- Milling, patching, resurfacing, drainage & guiderail





# GROUP 102-24-SIB - MICRO

- ECMS # 119732
- PA 528, SRs 3017, 3019, 3020, 3021 & 3024
- Estimate: \$1.0M – 2.5M
- Let Date: 5/9/24
- Micro-surfacing





# CO #24 KELLY BRIDGE

- ECMS # 24471
- Local Project
- T-372 (Taggart Road)  
over Slippery Rock Creek
- Worth Township
- Estimate: \$1.0M - 2.5M
- Let Date: 7/25/24
- Bridge Replacement
- Detour for 210 days



# KARNS CROSSING BRIDGE

- ECMS # 86105
- PA 68 over B&LE and B&P RR's & Connoquenessing Creek
- Butler & Summit Townships
- Estimate: \$70M - 80M
- Let Date: 8/8/24
- Two bridge replacements & intersection improvements





# SOUTHWEST OF EUCLID BRIDGE

- ECMS # 24682
- PA 138
- Clay Township
- Estimate: \$1.0M - 2.5M
- Let Date: 10/10/24
- Detour



# **2024 SPRING OUTREACH**

**ALICE HAMMOND, P.E.,  
ADE DESIGN**

# Roadway Projects



# EKASTOWN WEST 3R

- PA 228
- 3R
- Clinton & Buffalo Townships
- Construction in 2025
- Construction Estimate: \$12.5M - \$15M





# JEFFERSON & CUNNINGHAM STREETS

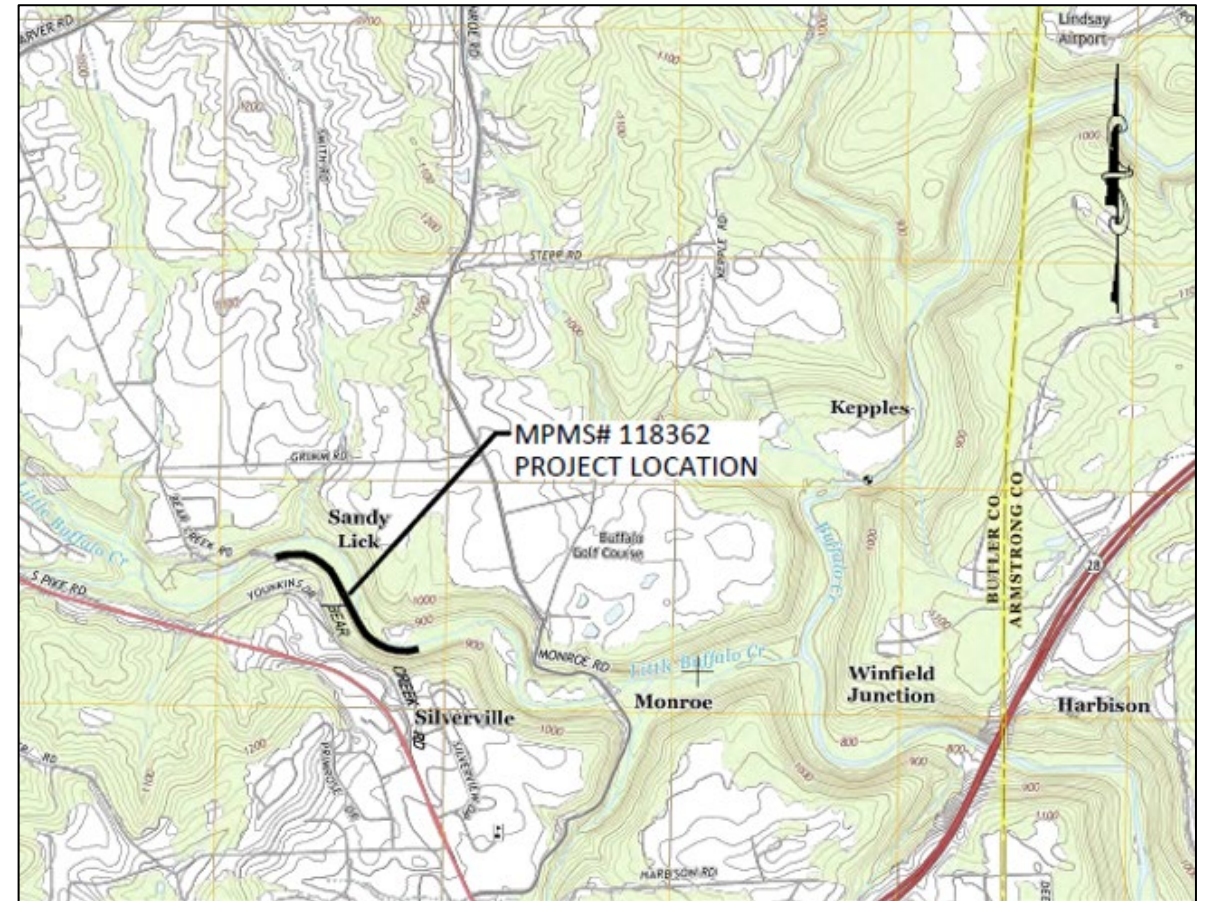
- PA 68
- Full signal replacements along PA 68 at 9 intersections
- Butler City
- Construction in 2025
- Construction Estimate: \$2.5M - \$5.0M





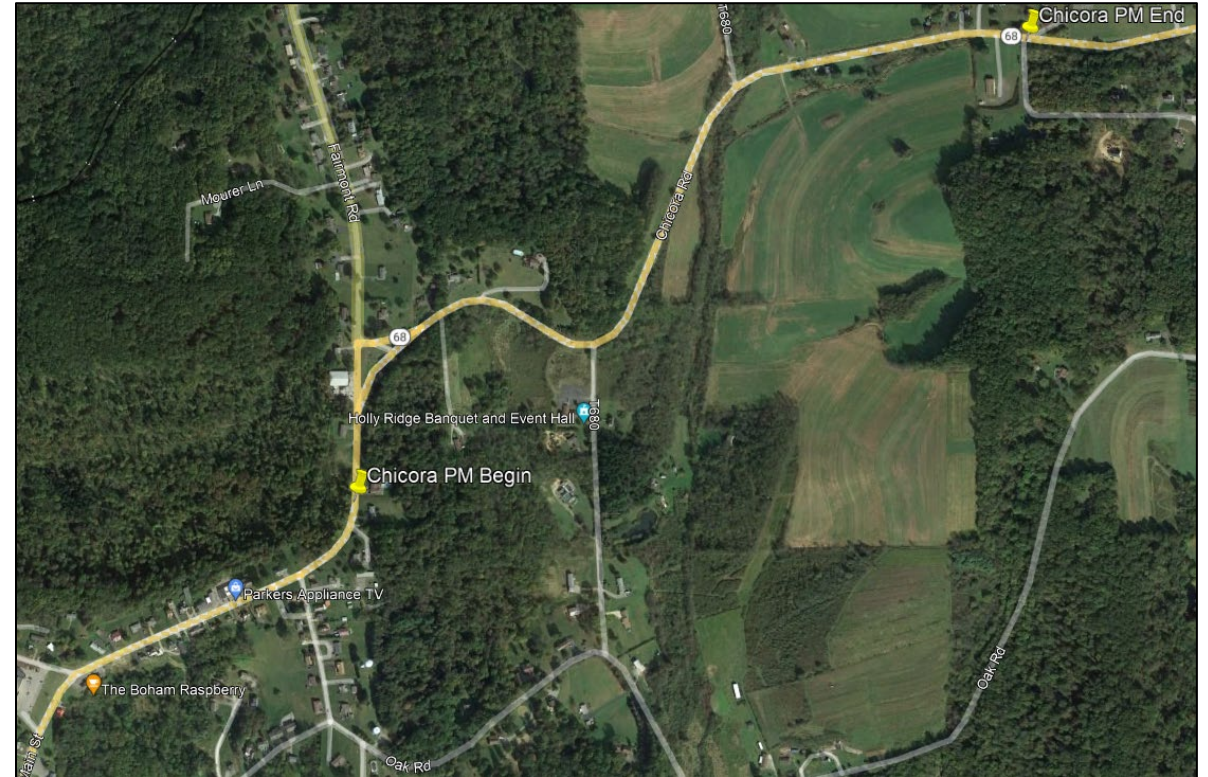
# BUTLER-FREEPORT COMMUNITY TRAIL

- Stream Bank Stabilization
- Buffalo Township
- Construction in 2025
- Construction Estimate:  
< \$1M



# PA 68 CHICORA PM

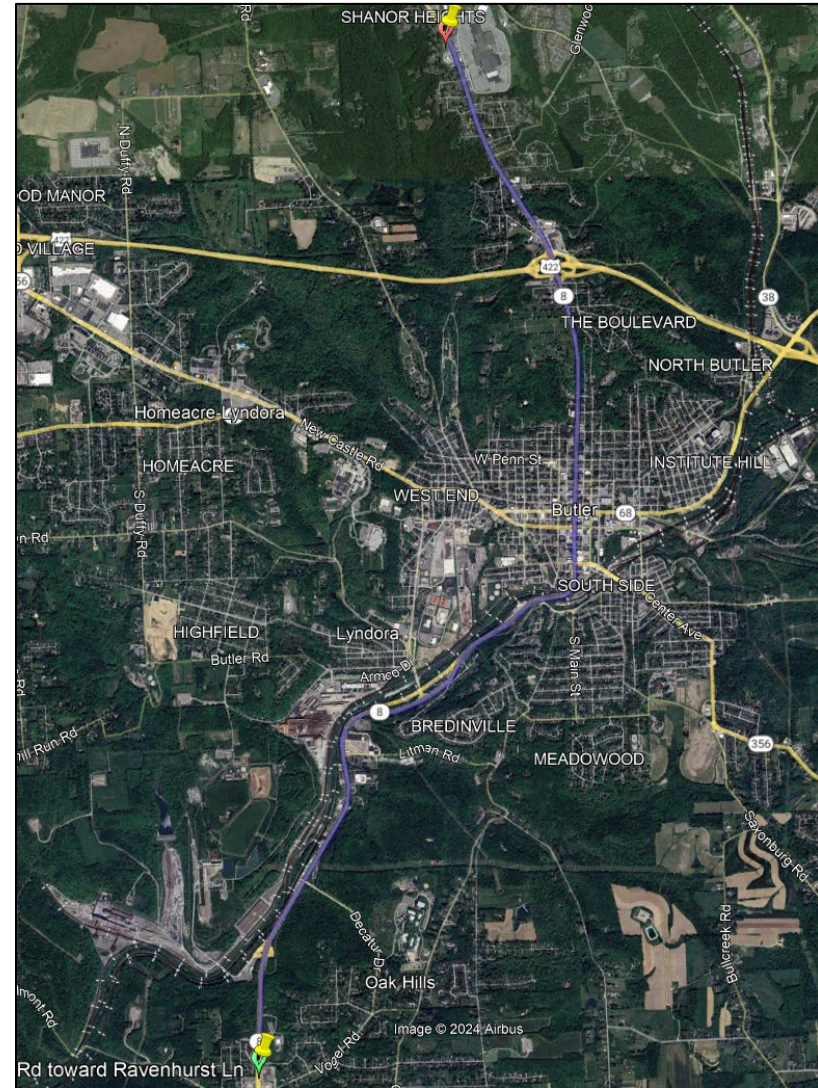
- PA 68
- Preventative Maintenance
- Donegal Township & Chicora Borough
- Construction in 2027
- Construction Estimate:  
\$1.0M - \$2.5M





# PA 8 BUTLER CITY TO SR 308

- PA 8
- Roadway Resurfacing
- Butler City, Butler & Center Townships
- Construction in 2027
- Construction Estimate: \$12.5M - \$15M



# US 422 COUNTY LINE WEST PM

- US 422
- Pavement Preservation
- Clearfield Township
- Construction in 2027
- Construction Estimate: \$7.5M - \$10M





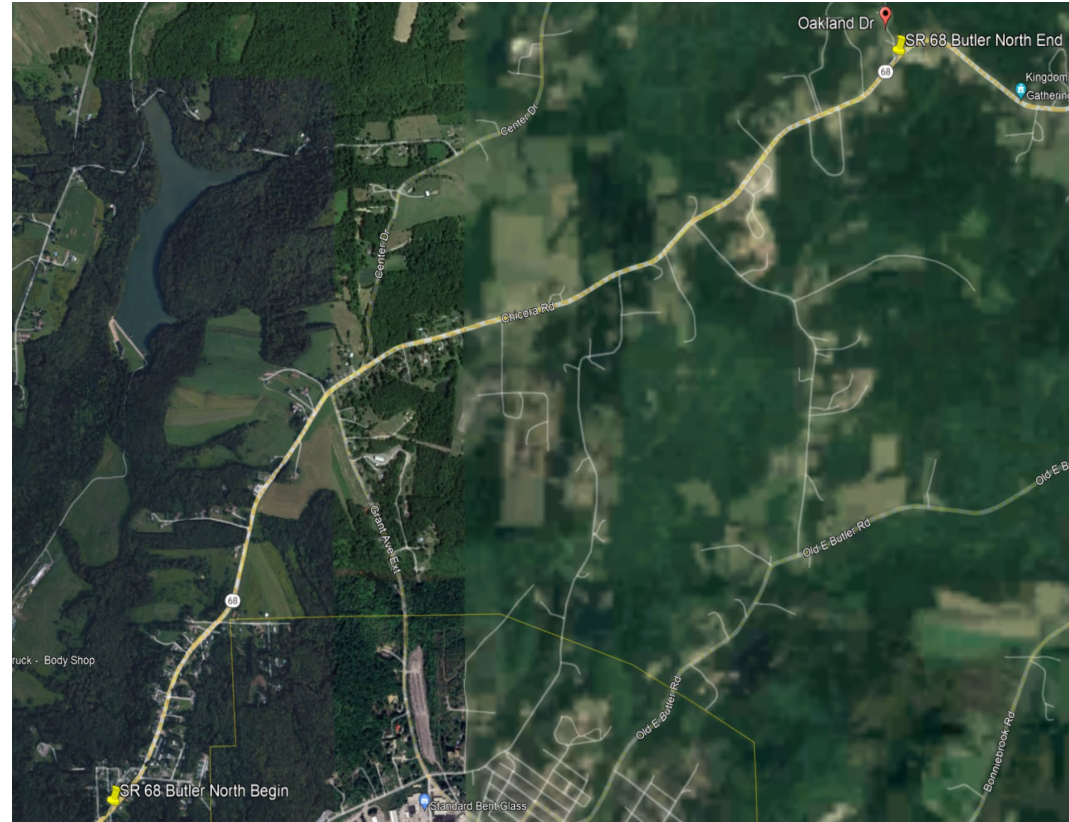
# US 422 LAWRENCE COUNTY LINE

- US 422 Resurfacing
- Muddy Creek Township
- Construction in 2027
- Construction Estimate:  
\$5M - \$7.5M



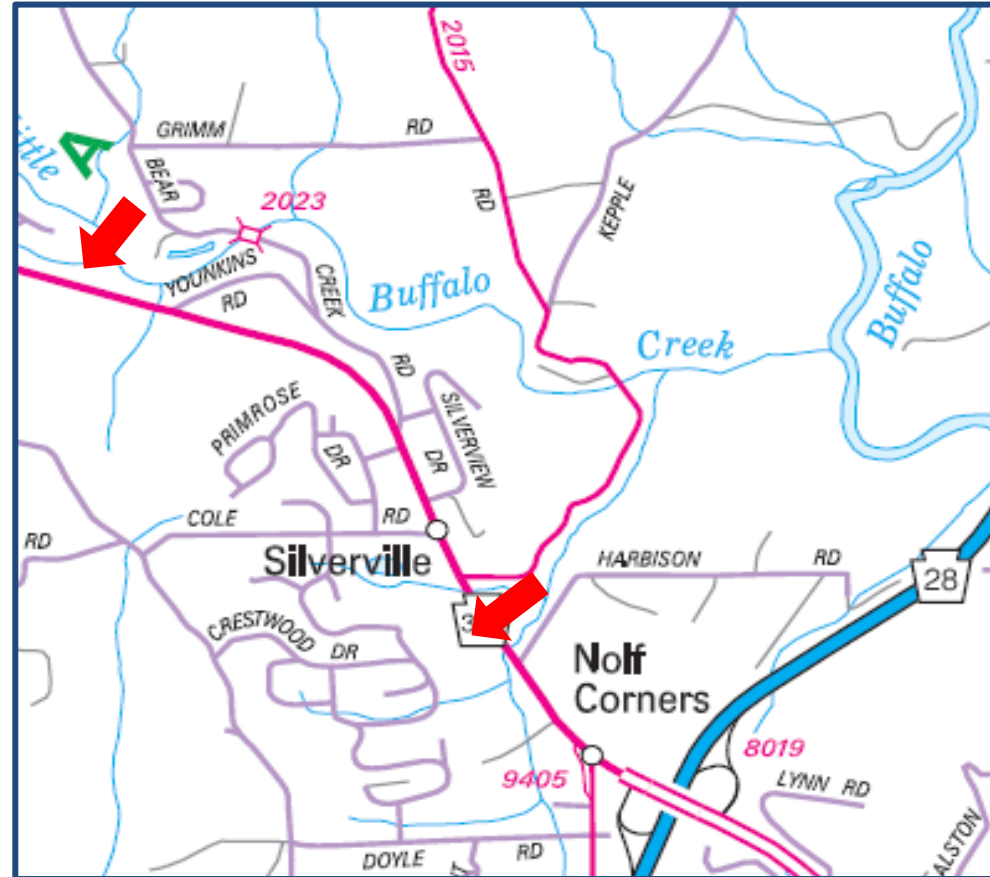
# BUTLER NORTH RESURFACING

- PA 68 Preventative Maintenance
- Summit & Oakland Townships
- Construction in 2028
- Construction Estimate: \$2.5M - \$5.0M



# PA 356 CORRIDOR IMPROVEMENTS

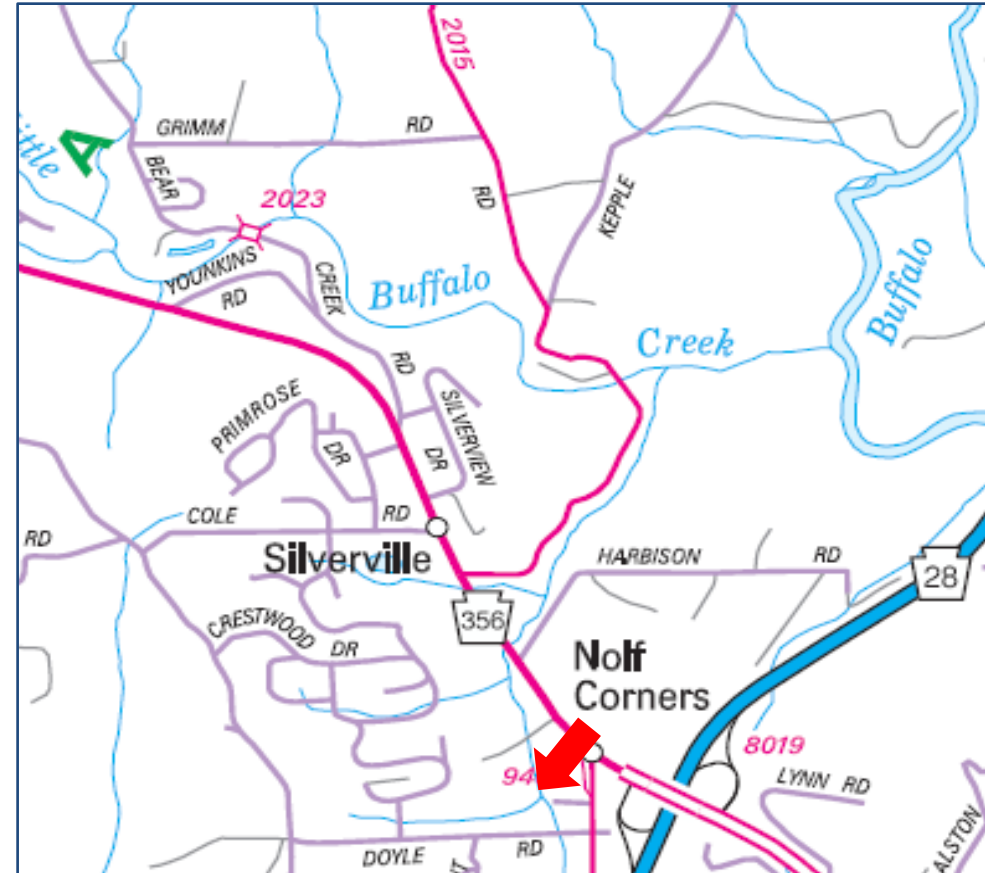
- PA 356
- Congestion Reduction
- Buffalo Township
- Construction in 2028
- Construction Estimate:  
\$20M - \$25M





# PA 356 PARK-AND-RIDE

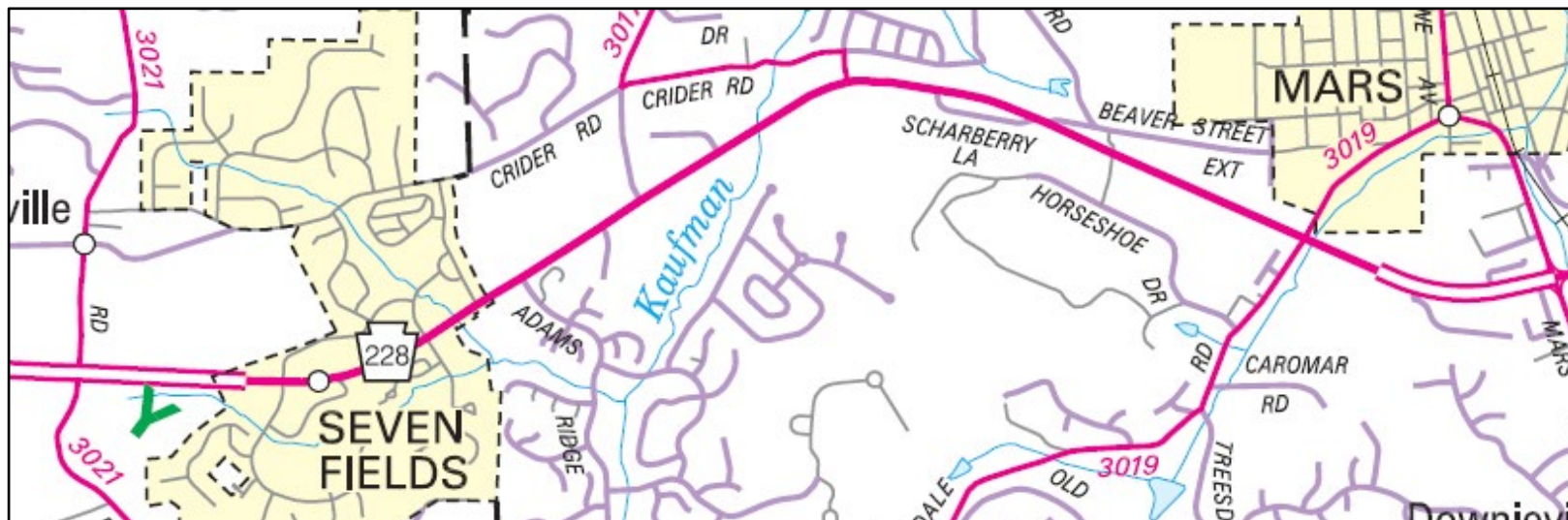
- PA 356 & SR 2017
- Congestion Reduction
- Buffalo Township
- Construction in 2028
- Construction Estimate:  
\$2.5M - \$5M





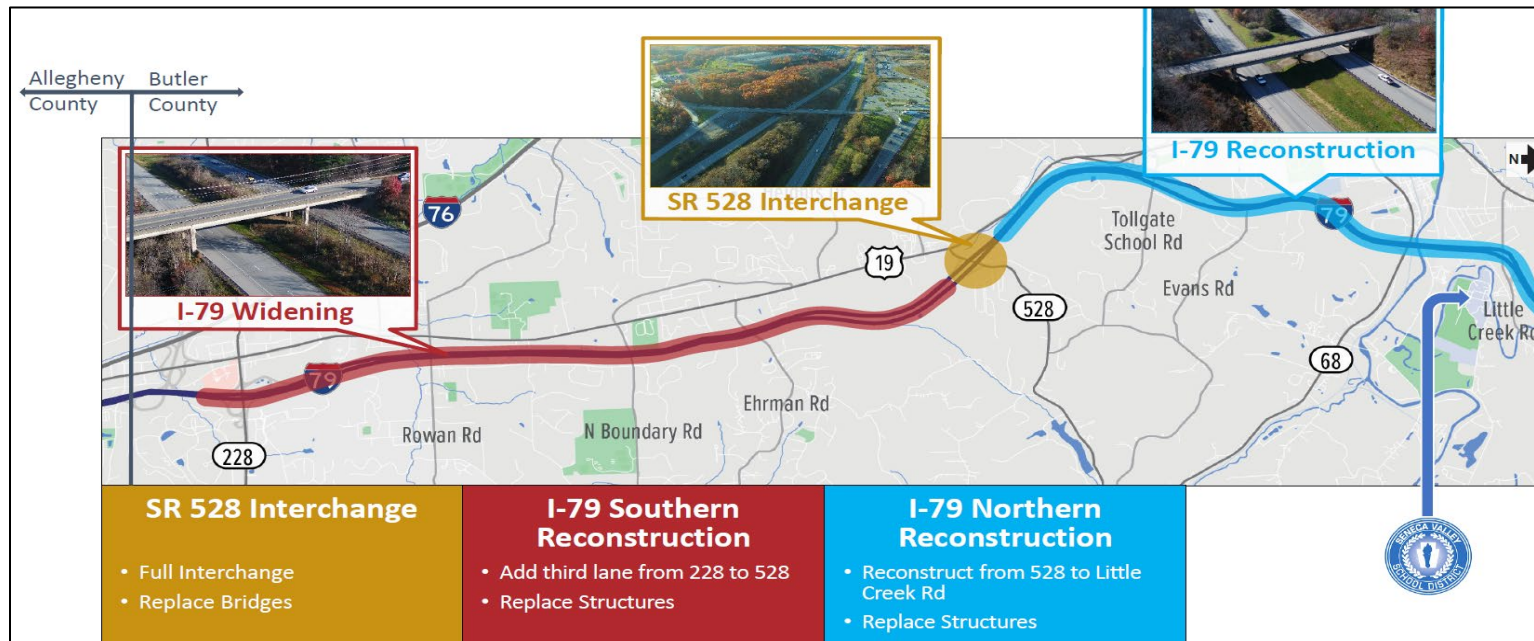
# MARS RAILROAD BRIDGE WEST

- PA 228
- Safety improvements, lane additions, realignment & intersection improvements
- Adams & Cranberry Townships
- Construction: TBD (not funded on Draft TYP)
- Construction Estimate: \$90M - \$100M



# I-79 SOUTHERN RECONSTRUCTION

- Interstate 79
- Roadway Reconstruction
- Jackson & Cranberry Townships
- Construction: TBD
- Construction Estimate \$150M - \$200M





# Bridge Projects



# ZELIENOPE BRIDGE #1 LATEX

- SR 19 over CSX RR & Connoquenessing Creek
- Bridge Preservation
- Zelenople Borough
- Construction in 2026
- Construction Estimate:  
\$1.5M - \$2.0M





# T-584 OVER BONNIE BROOK

- T-584 Geibel Road
- Bridge Replacement
- Summit Township
- Construction in 2026
- Construction Estimate:  
\$1.0M - \$1.5M



# SHEARER BRIDGE

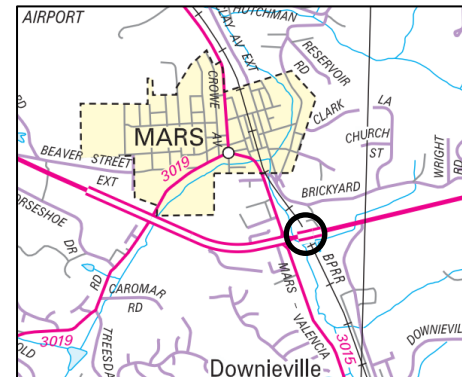
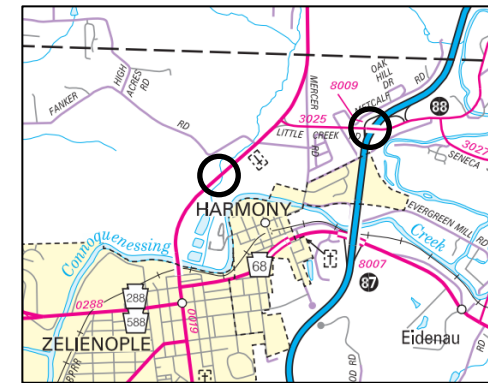
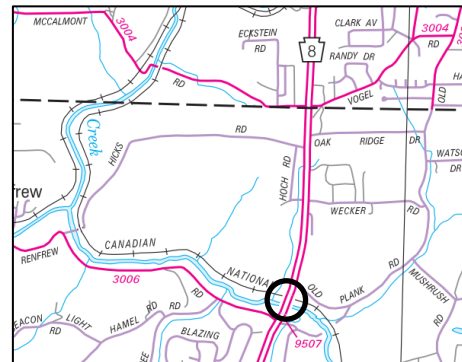
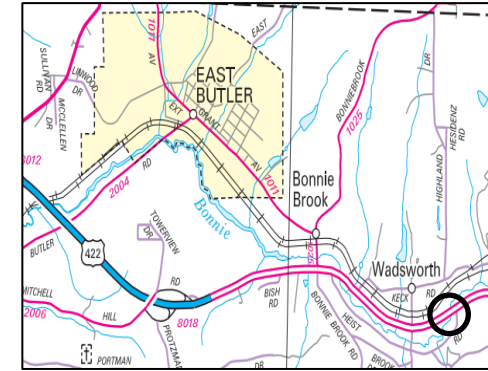
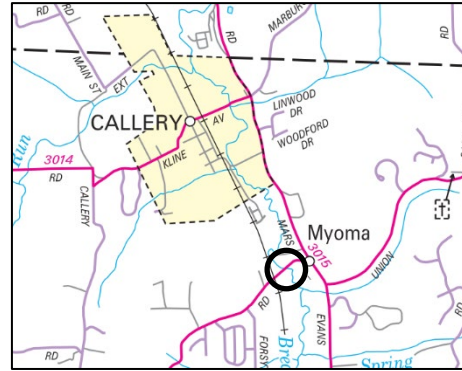
- US 422
- Bridge Preservation
- Butler Township
- Construction in 2026
- Construction Estimate: \$5M - \$7.5M





# BUTLER EPOXY GROUP BRIDGES

- PA 8, PA 19, PA 228, US 422, SR 3017 & SR 3025
- Bridge Preservation
- Various Municipalities
- Construction in 2026
- Construction Estimate: \$750k - \$1.5M



# RENFREW BRIDGE

- SR 3007
- Bridge Replacement
- Butler Township
- Construction in 2027
- Construction Estimate: \$1M - \$5M





# GENERAL BUTLER BRIDGE PM

- PA 8
- Bridge Preservation
- Butler City
- Construction in 2027
- Construction Estimate: \$5M - \$7.5M



# US 422 OVER PA 356 BRIDGE

- US 422
- Bridge Replacement
- Butler Township
- Construction in 2027
- Construction Estimate:  
\$20M - \$30M





# US 422 OVER SR 4005 BRIDGE

- US 422
- Bridge Replacement
- Muddy Creek Township
- Construction in 2027
- Construction Estimate: \$13M - \$13.5M



# WAYNE STREET VIADUCT EPOXY

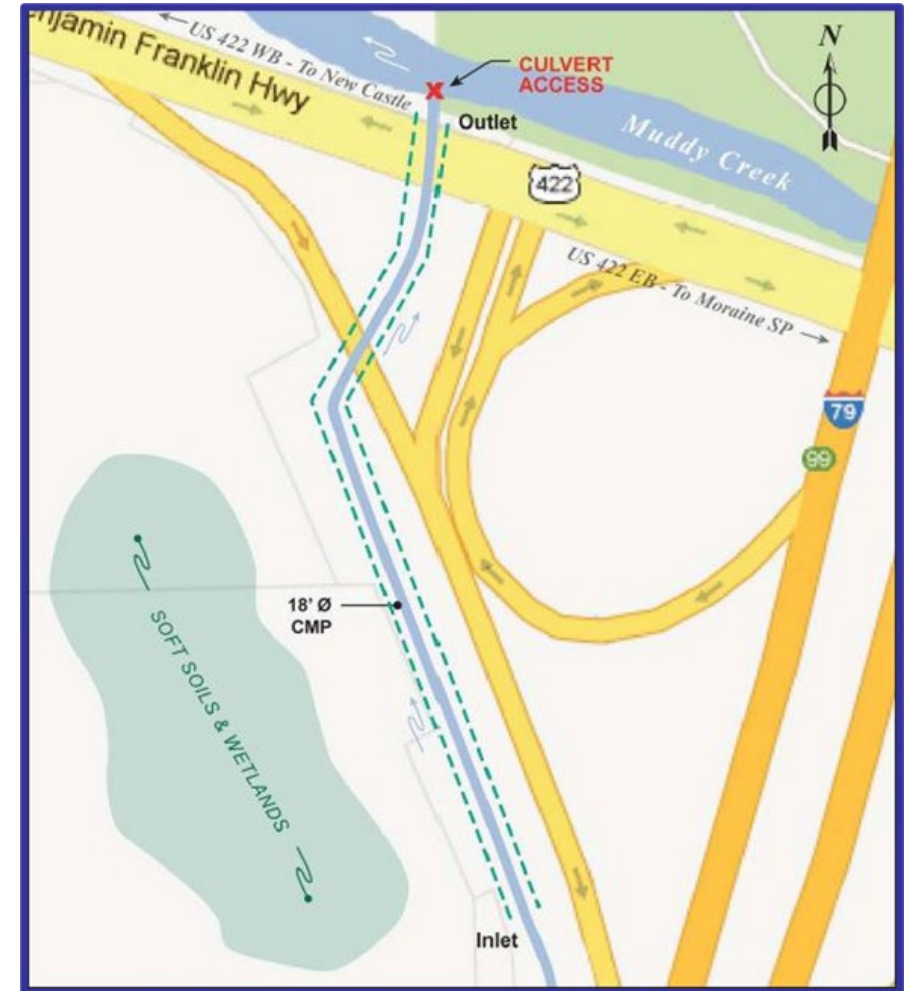
- PA 356
- Bridge Preservation
- City of Butler
- Construction in 2027
- Construction Estimate: \$500K - \$1M





# US 422 SHAWOOD PIPE

- US 422
- Culvert Replacement
- Muddy Creek Township
- Construction in 2028
- Construction Estimate: \$10M - \$20M



# T-603 SAINT JOE BRIDGE

- T-603 (Saint Joe Road)
- Bridge Replacement
- Oakland Township
- Construction in 2028
- Construction Estimate:  
\$500K - \$1.5M





# SOUTH MONROE STREET BRIDGE

- SR 7301 (South Monroe Street)
- Bridge Replacement
- City of Butler
- Construction: TBD (funded on Draft TYP)
- Construction Estimate: \$5.0M - \$6.0M





# PA 268 OVER S. BRANCH BEAR

- PA 268
- Bridge Replacement
- Petrolia Borough
- Construction: TBD  
(funded on Draft TYP)
- Construction Estimate:  
\$2.0M - \$3.0M



# PA 528 OVER BIG RUN

- PA 528
- Bridge Replacement
- Brady Township
- Construction: TBD  
(funded on Draft TYP)
- Construction Estimate:  
\$1.5M - \$2.5M





# STATE GAME LANDS 95 BRIDGE

- PA 268
- Realignment & Bridge Rehabilitation
- Parker Township
- Construction: TBD (funded on Draft TYP)
- Construction Estimate: \$5M - \$7.5M





# SR 1004 BRUIN BRIDGE #5

- SR 1004
- Bridge Replacement
- Bruin Borough
- Construction: TBD  
(funded on Draft TYP)
- Construction Estimate:  
\$1.5M - \$2.5M



# I-79 HARMONY NB AND SB

- Interstate 79
- Bridge Replacement
- Jackson Township
- Construction: TBD (funded on Draft TYP)
- Construction Estimate \$135M





**2024 SPRING OUTREACH  
BUTLER COUNTY**

**MIKE MATTIS  
COUNTY  
MAINTENANCE MANAGER**

# CONTACTS

## County Manager: Michael Mattis

- Assistant Manager: Bruce Hartman
- Assistant Manager: Brent Piccola
- Assistant Manager: Troy Adamosky
- Roadway Programs Coord.:  
Chris Robinson
- Equipment Manager: Todd Gabriel
- Adopt-A-Highway Coordinator: Kelsey Mulig



### Contact Information

351 New Castle Road, Butler PA 16001  
724-284-8800  
Fax Number: 724-284-1594





# COUNTY PROFILE

- 33 Townships
- 23 Boroughs
- 669 miles of State Highway
- 1,582 lane miles of State Highway
- 29 miles of Interstate
- 106 miles of National Highway System
- 230 miles of State Routes with ADT > 2,000
- 299 miles of State Routes with ADT < 2,000
- 354 Bridges
- 85 Railroad Crossings
- 3 Airports
- 3 County Transit Systems
- 6 Park-n-Ride Lots
- 1 PENNDOT Office
- 8 PENNDOT Stockpiles
- 1 State University
- 2 State Parks
- Butler County Maintenance Operating Budget of \$21,041,000



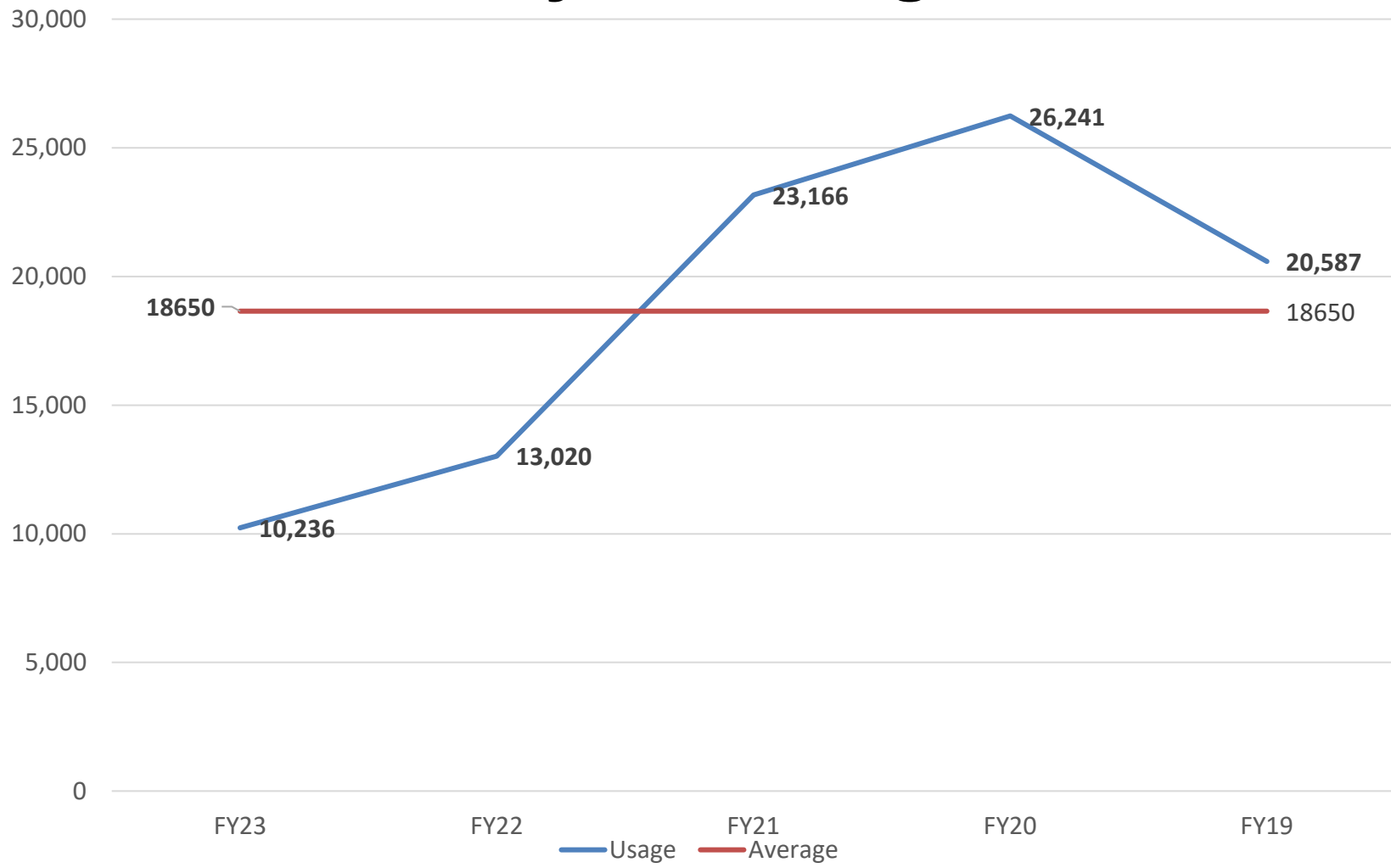
# WINTER WRAP UP

- Winter Costs - \$2,906,998
- Trucks with Plows/Spreaders - 44
- Salt Usage - 10,236 tons
- Anti-Skid Usage - 1,564 tons
- Salt Brine Used This Winter - 34,682 gallons
- Snow Lane Miles - 1,613 miles



# WINTER WRAP UP – HISTORICAL

## Yearly Salt Usage





# EMPLOYEE BREAKDOWN

## Management Staff – 6

- 1 - County Manager
- 3 - Assistant County Managers
- 1 - Equipment Manager
- 1 - Roadway Programs Coordinator

## Office Staff – 4

- 1 - Roadway Programs Technician 2
- 1 - Roadway Programs Technician I
- 1 - Clerical Supervisor
- 1 - Clerk

## Storeroom Staff – 3

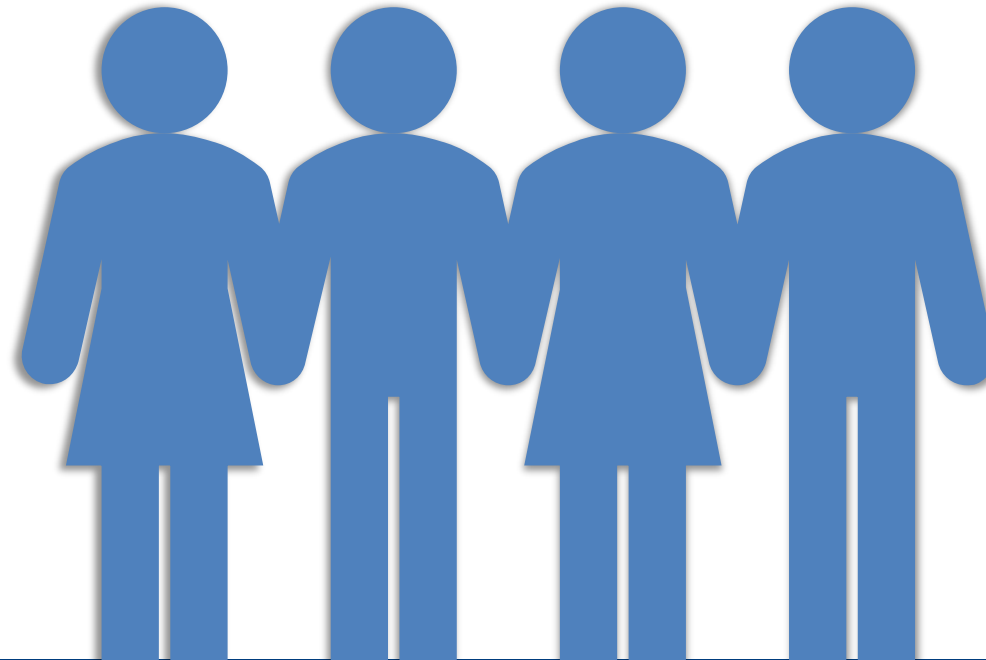
- 2 - Roadway Programs Technician I's
- 1 - Roadway Programs Technician II

## Summer Temporary Staff – 19

- 14 - Highway Maintenance Workers
- 5 - College Students

## Garage Staff – 12

- 1 - Mechanic Supervisor
- 1 - Garage Clerk
- 1 - Transportation Operator S
- 8 - Mechanics
- 1 - Welder



## Field Staff – 103

- 12 - Foremen
- 89 - Transportation Operators
- 2 - Maintenance Repairmen



# EQUIPMENT



- \* 44 Tandem/Single Axle Trucks
- \* 1 Bucket Truck
- \* 1 Fuel Truck
- \* 4 Anti-Icing/Water Trucks
- \* 1 Backhoe
- \* 1 Gradall
- \* 2 Woodchippers
- \* 2 Rubber Tire Rollers
- \* 1 Widener

- \* 10 Loaders
- \* 1 Street Sweeper
- \* 1 Lowboy
- \* 3 Crash Trucks/Attenuators
- \* 3 Excavators
- \* 1 Athey/Belt Loader
- \* 5 5-ton Rollers
- \* 1 Pipe Flusher
- \* 1 Paver

- \* 2 Graders
- \* 1 1-ton Dump Truck
- \* 1 Lowboy Trailer
- \* 1 Snow Blower
- \* 1 Dozer/Crawler
- \* 5 Skid Steers
- \* 2 10-ton Rollers
- \* 5 Mowers
- \* 1 Milling Machine



# SECTIONAL CYCLE MAINTENANCE

## Section 1 - Red

**Activities being performed this summer:** Patching, Pipe Repair/Installation, Sign Repair/Installation, Mowing, Crack Sealing, Seal Coat/Tar Chip, Mechanical Patches, Milling/Filling RT 228, Spot Paving

## Section 2 - Green

**Activities being performed this summer:** Patching, Pipe Replacement/Installation, Sign Replacement/Repair, Crack Sealing, Mowing, Seal Coat, Micro-Surface, Spot Paving

## Section 3 - Blue

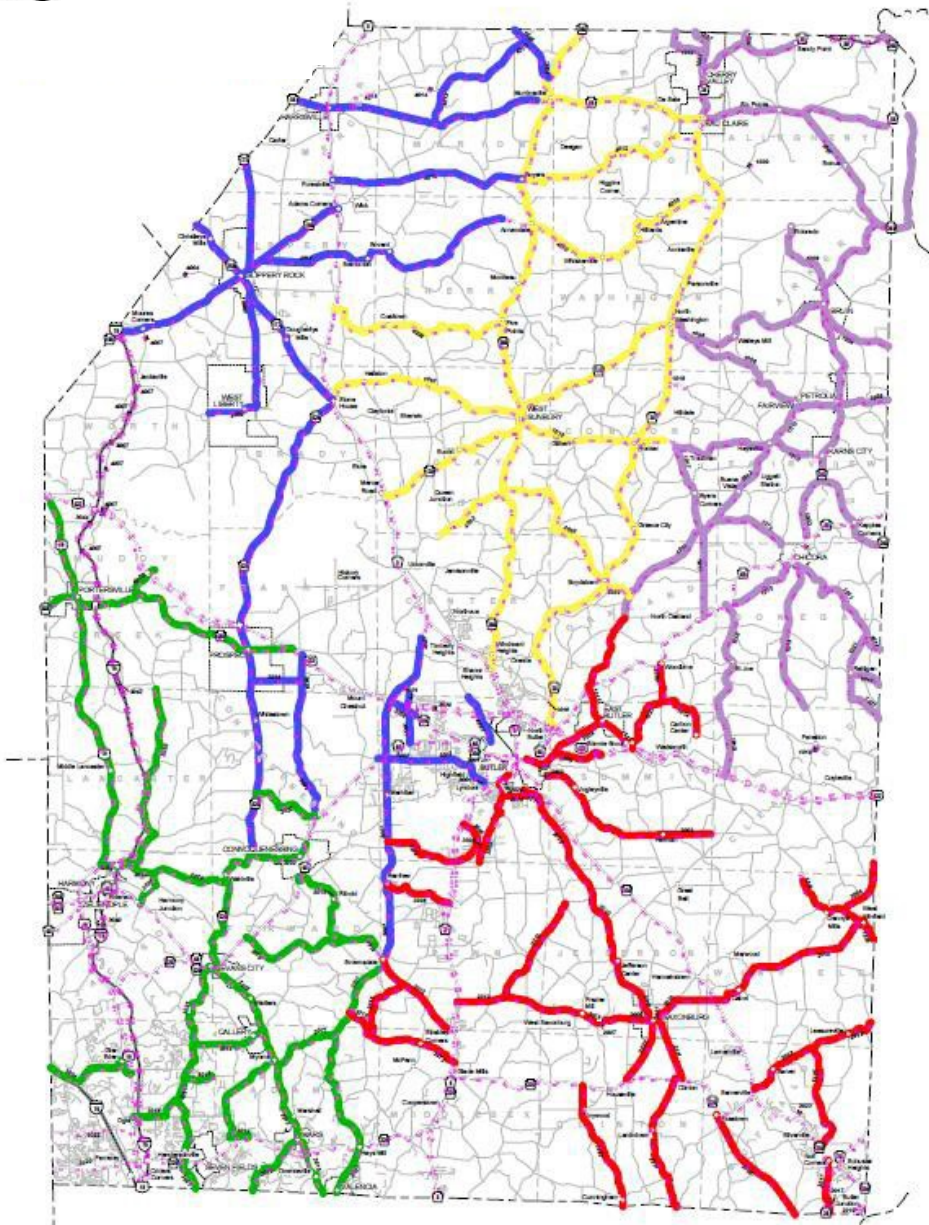
**Activities being performed this summer:** Patching, Pipe Repair/Installation, Sign Repair Installation, Crack Sealing, Mowing, Spot Paving, Shoulder Cutting

## Section 4 – Yellow with Red

**Activities being performed this summer:** Patching, Tail Ditching, Pipe Flushing, Pipe Replacement, Crack Sealing, Sign Installation/Repair, Mowing

## Section 5 - Purple

**Activities being performed this summer:** Patching, Sign Replacement/Repair, Crack Sealing, Tail Ditching, Pipe Flushing, Mowing, Pipe Replacement





# MAINTENANCE ACTIVITIES

## Patching



In 2023, Butler County crews used 2,037 tons of asphalt to perform patching to repair its roadways for a total cost of \$1,239,421.

We spent 16,708 work hours completing this work.



# MAINTENANCE ACTIVITIES

## Seal Coat



During 2023, maintenance crews used 404,253 gallons of oil to seal coat roadways throughout Butler County for an overall cost of \$1,996,609. We used 7,170 work hours to complete the work.



# MAINTENANCE ACTIVITIES

## Crack Sealing



In 2023, Butler County crews crack sealed 22 miles of roadway for a total of \$140,937. It took 1,989 work hours to complete this work.





# MAINTENANCE ACTIVITIES

## Mechanical Patches/Spot Paving



In 2023, Butler County Seal Coat/Paving crew used 4,292 tons of asphalt performing mechanical patches and spot paving county roadways for a total of \$597,114. We spent 3,511 work hours to complete this work.



# MAINTENANCE ACTIVITIES

## Drainage Work



Butler County crews did 23,415 feet of various drainage work in 2023 including:

- Cross Pipe Replacement
- Parallel Pipe Installation
- Ditching
- Underdrain Installation

Butler County spent \$681,994 using 8,212 work hours to complete the various drainage activities.



# MAINTENANCE ACTIVITIES

## Bridge Cleaning & Sweeping

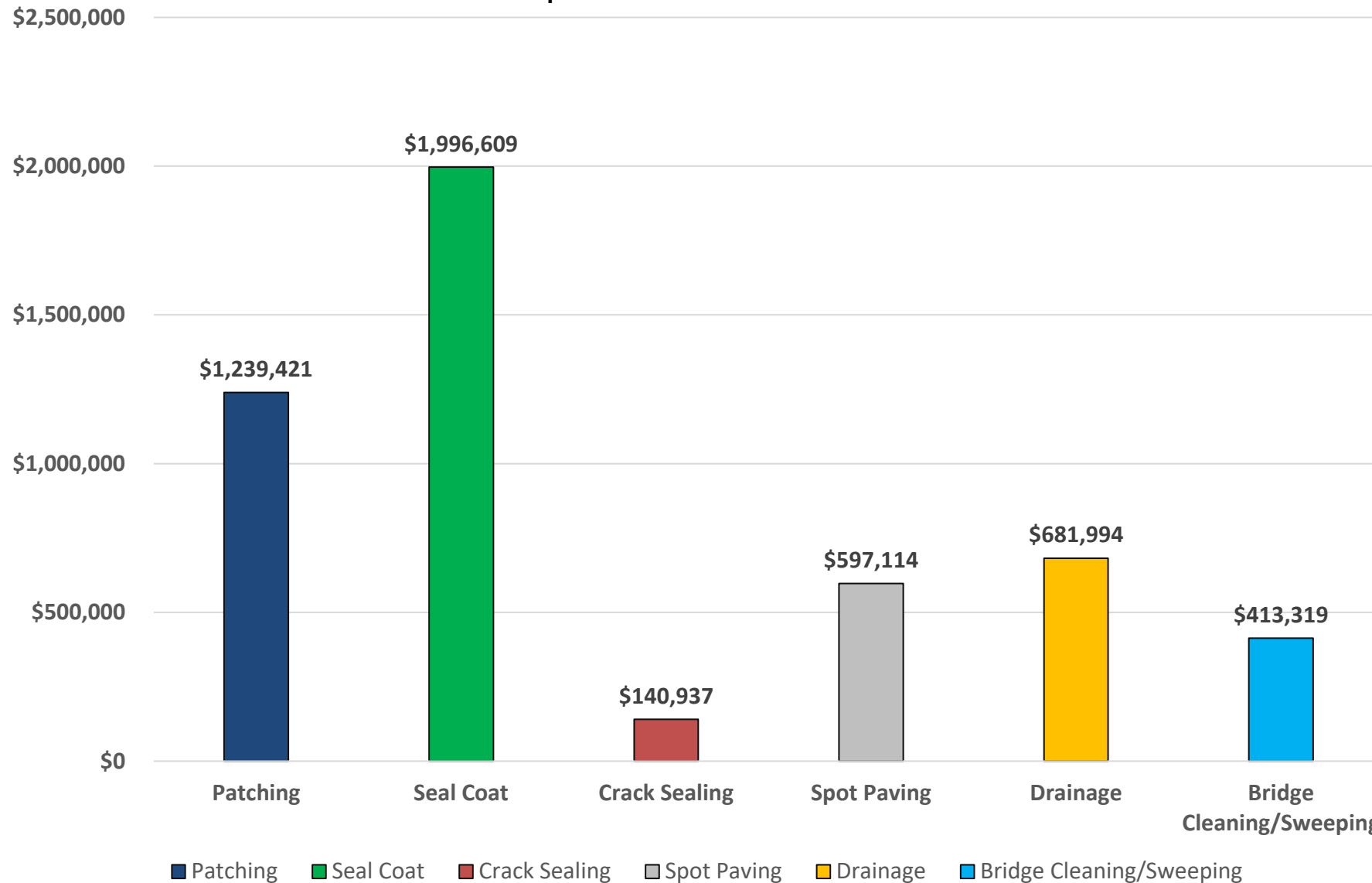
In 2023, maintenance crews spent 5,713 work hours sweeping and cleaning bridges after winter for a total cost of \$413,319.





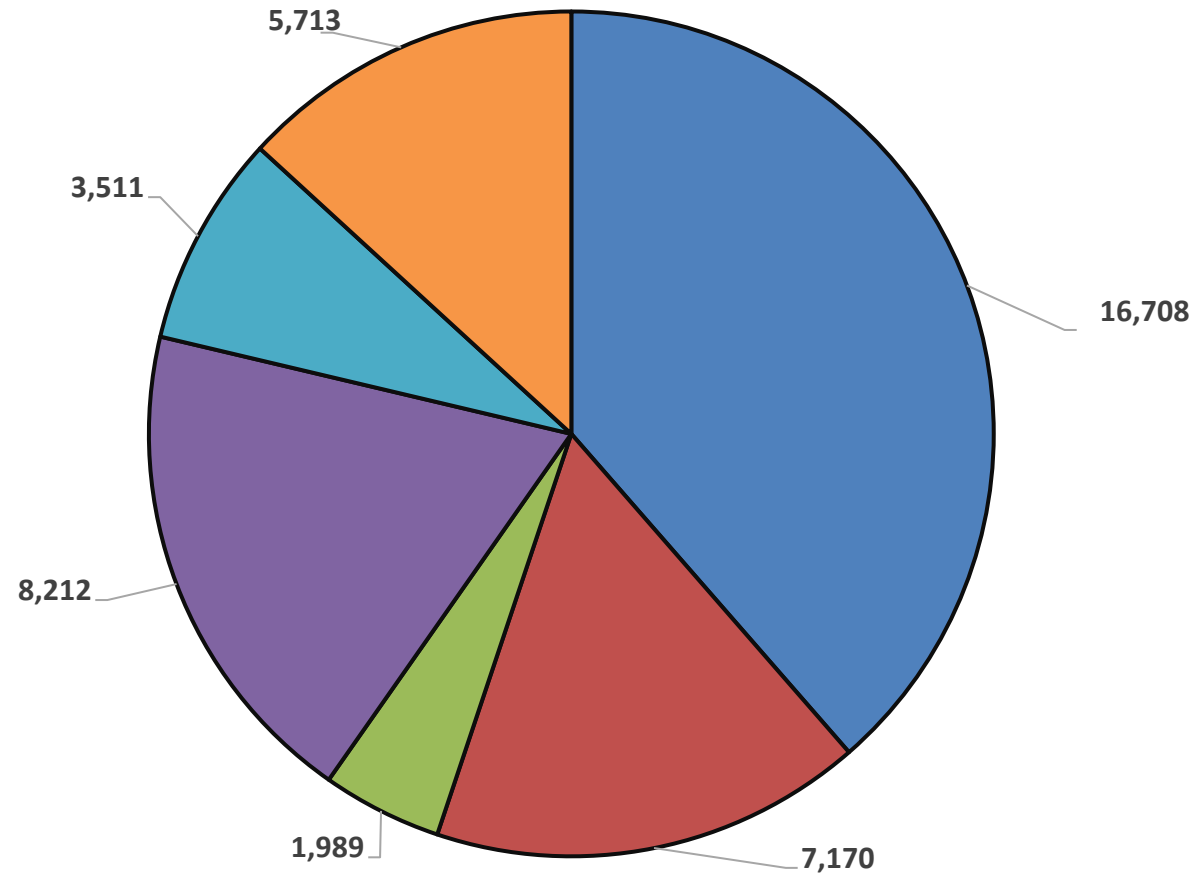
# MAINTENANCE ACTIVITIES

Dollars Spent on Maintenance Activities



# MAINTENANCE ACTIVITIES

Work Hours Per Maintenance Activity



■ Patching ■ Seal Coat ■ Crack Sealing ■ Drainage ■ Spot Paving ■ Bridge Cleaning/Sweeping



# AGILITY OPPORTUNITIES

Partnership between Butler County PENNDOT and one of the following organizations:

- Borough, Township or City
- Water, Sewer, Housing or Municipal Authority
- Councils of Government
- Public School Districts or Universities
- Charitable Hospitals
- Volunteer Fire Companies
- Volunteer Ambulance Companies

The agreed upon work between PENNDOT and the Partner must be close to or equal in value.

**For questions, please call Butler County's Agility Coordinator, Chris Robinson: 724-284-8800.**





**2024 SPRING OUTREACH**

**TINA GIBBS**

**COMMUNITY RESOURCES COORDINATOR**

# DISTRICT 10 WEB RESOURCES

**Doing Business with PennDOT Resource Guide**

**Subscribe to District 10 news**

**Coming soon –**

**Spring Outreach Meeting presentations and maps**

They will be posted under Outreach by county within a week following the meeting.


DOT > [Regional Offices](#) > District 10

## District 10

**Counties:** Armstrong | Butler | Clarion | Indiana | Jefferson

PennDOT's Engineering District 10 is responsible for the state-maintained transportation network in this region. This includes 3,180 total road miles and 1,630 total bridges.

We also work with local governments, elected officials, stakeholders and the public on keeping people and goods moving safely and efficiently in this region.



### District Links

- [Construction Projects/Roadwork](#)
- [Public Meetings/Studies](#)
- [Maintenance and Traffic Bulletins](#)
- [Permits](#)
- [Right of Way](#)
- [Submit Roadway Concern](#)
- [ISO 9001:2015 Certified Project Delivery](#)

### Press Releases

**[PennDOT Announces Virtual Plans Display for Wayne Richard Weaver Bridge Preservation in Clarion Borough and Highland Township, Clarion County](#)**

02/14/2023

The Pennsylvania Department of Transportation (PennDOT) invites the public to view plans regarding the bridge preservation project of the existing structure (Wayne Richard Weaver Bridge) carrying State Route 1005 over the Clarion River in Clarion Borough and Highland Township, Clarion County...

[Read More](#)

**[U.S. 422 Closure in Kittanning Township, Armstrong County](#)**

02/10/2023

[Doing Business with PennDOT District 10.pdf](#)

[Accomplishments](#)

[Paint the Plow](#)

[FAQs](#)

**Subscribe to District 10 News**

Enter your email

[Subscribe](#)



# CONNECT WITH PENNDOT

Website: [www.penndot.gov/District10](http://www.penndot.gov/District10)

Join our Groups on Facebook:

[Pittsburgh PennDOT](#)

[Northwest PennDOT](#)

X (Twitter):

[@511PA Erie](#)

[@511PA Pittsburgh](#)





# DISTRICT 10 CONTACTS

**District Executive, Brian Allen, P.E. - 724-357-2806**

**Assistant District Executive - Construction, Paul Koza, Jr., P.E. - 724-357-2812**

**Assistant District Executive - Design, Alice Hammond, P.E. - 724-357-2805**

**Assistant District Executive - Maintenance, Matthew Burkett - 724-357-2809**

**Community Relations Coordinator, Tina Gibbs - 724-357-2829**

**District Office (10-0)**  
2550 Oakland Avenue  
Indiana, PA 15701  
724-357-2800

Standard hours of operation are 8:00 AM to 4:30 PM.



*Thank-you*

