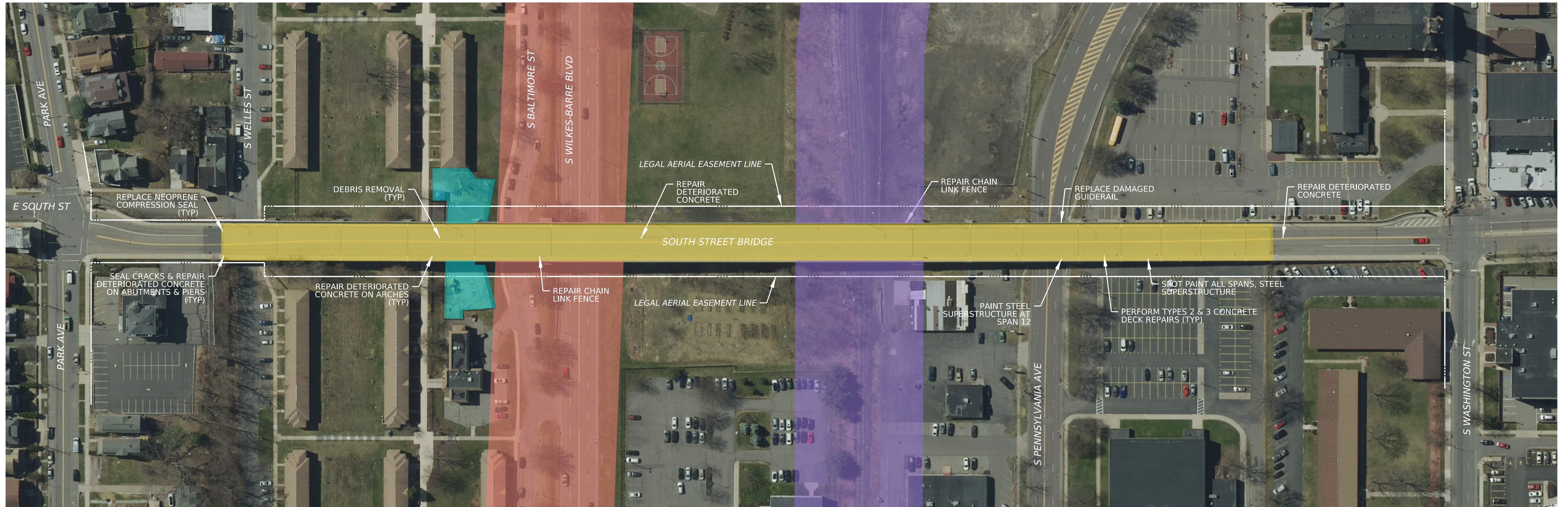
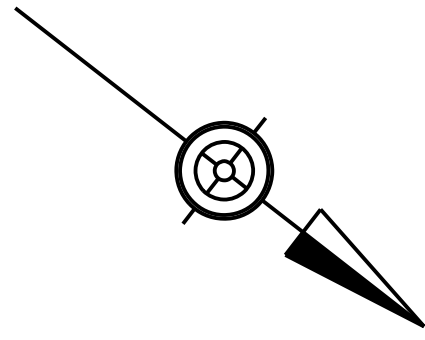


State Route 2007 Section PRS over S Pennsylvania Ave, S Wilkes-Barre Blvd, & S Baltimore St Luzerne County, Pennsylvania



SCOPE OF WORK:

1. SET UP MAINTENANCE AND PROTECTION OF TRAFFIC IN ACCORDANCE WITH APPROVED TRAFFIC CONTROL PLAN.
2. REPLACE PERFORMED NEOPRENE COMPRESSION SEAL JOINTS AT NEAR ABUTMENT, PIERS 1 THRU 5, AND PIER 15.
3. FIX STITCH WELDS ON STRINGERS.
4. FIX STITCH WELDS BETWEEN THE MASONRY PLATE AND CROSS-GIRDER TOP FLANGE.
5. REPAIR DETERIORATED FAR APPROACH ROADWAY. (ROADWAY ITEM)
6. PERFORM TYPE 2 AND TYPE 3 CONCRETE DECK REPAIRS.
7. REMOVE ANY CONCRETE DEBRIS THAT HAS FALLEN INTO THE NETTING IN SPANS 1-5.
8. REPAIR DETERIORATED CONCRETE IN THE ARCHES, SPANDREL COLUMNS, AND FLOOR BEAMS.
9. REPLACE THE MISSING LIGHT POLE COVER AND HAND HOLE COVER.
10. REPAIR DETERIORATED CROSS GIRDER PEDESTALS AT PIERS 9 THRU 16.
11. REPAIR DETERIORATED CONCRETE IN THE WINGWALLS AND PIER 5.
12. SEAL CRACKS AND REPAIR DETERIORATED CONCRETE IN THE ABUTMENT STEMS.
13. REPAIR THE DAMAGED CHAIN LINK FENCE AT PIERS 5 AND 9.
14. PAINT SPAN 12 STEEL SUPERSTRUCTURE AND SPOT PAINT REMIANING STEEL SUPERSTRUCTURE SPANS.
15. CLEAN AND PAINT STRINGER BEARINGS IN SPANS 10 THROUGH 16.
16. REPAIR CRACKED WELDS ON THE CROSS GIRDERS AT PIERS 10 & 13.
17. REPLACE DAMAGED GUIDE RAIL.

LEGEND

- BRIDGE REHABILITATION
- LEGAL AERIAL EASEMENT LINE

SECTION 4(F) RESOURCES:

- CENTRAL RAILROAD OF NEW JERSEY (NRHP-ELIGIBLE, PASHPO RES. NO. 2010RE03835)
- LEHIGH VALLEY RAILROAD (NRHP-ELIGIBLE, PASHPO RES. NO. 2010RE00722)
- O. KARMA TERRACE (BOULEVARD TOWNHOMES) PLAYGROUND

SECTION 6(F) RESOURCES:

- O. KARMA TERRACE (BOULEVARD TOWNHOMES) PLAYGROUND

PRELIMINARY