



PENNDOT MAJOR BRIDGE P3- I-80 LEHIGH RIVER BRIDGE



Bridging Pennsylvania Developers I & Bridging
Pennsylvania Constructors
I-80 Lehigh River Pre-Construction Public Meeting

March 7, 2024

How to MAXIMIZE today:

- **PUBLIC MEETING:** It is our intention to address all previously identified questions and comments during today's presentation, please hold your questions until the Q&A portion, as they may be answered throughout the presentation.
- **PUBLIC SERVICE ANNOUNCEMENT:** If you are attending this meetings and currently have ongoing PennDOT real estate negotiations, those inquiries are considered private and will not be discussed in a Public Meeting setting. Should you wish to address any specific real estate questions, please speak with the team following this meeting to be connected to a representative.

Agenda

- Welcome & Introductions
- Program & Project Updates
- Pre-Construction and Current Activities
- Upcoming Construction Schedule Activities
- Closing Remarks & How to Stay Informed



Welcome & Introduction

Meet the I-80 Lehigh River Bridge Team





PennDOT- Program & Project Update

PENNDOT MAJOR BRIDGE P3



KEY DATES

- **November 2020-** The Major Bridge P3 (MBP3) was approved by the Pennsylvania P3 Board, for the replacement or rehabilitation of nine major interstate bridges throughout a progressive P3 delivery model.
- At that time, PennDOT planned to make annual payments to pay for the work and financing costs on these bridges using mandatory tolling, as was permitted by the Pennsylvania P3 law.
- **Since that time, Act 84 of 2022 amended the P3 law to eliminate mandatory tolling of existing free lanes. The act also preserved the department's ability to continue the MBP3 and move forward with the Predevelopment Agreement (PDA) with Bridging Pennsylvania Partners (BPP).**

PENNDOT MAJOR BRIDGE P3

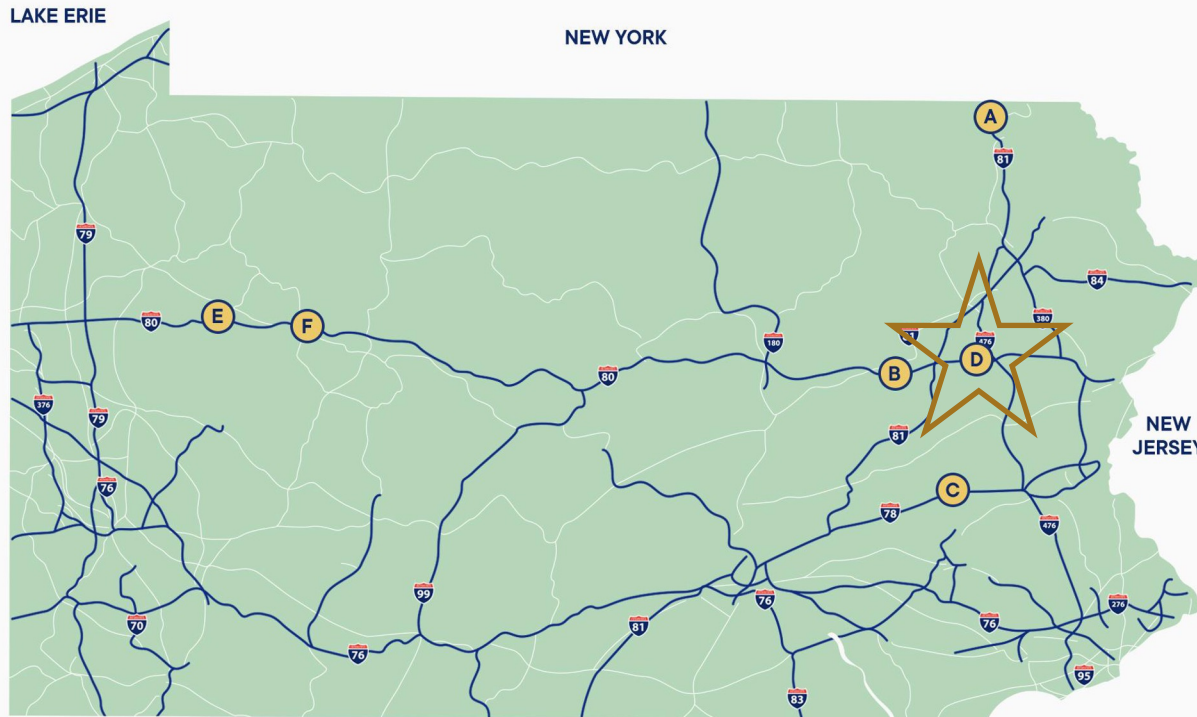


HISTORICAL KEY DATES

- **August 2022-** PennDOT chose to move the bridge projects in the MBP3 forward without tolling and pay for the project(s) using existing funds to make annual payments to the development entity over 35 years.
- **December 2022-** Financial Close is achieved on Package I, including six (6) bridges
- **Fall 2023- Spring 2024-** Bridging Pennsylvania Constructors (BPC) and design lead, Michael Baker International (MBI) begin performing pre-construction surveying, meeting with local property owners & key stakeholder groups including local municipalities, EMS, schools, local businesses and impacted members of the public.
- **April/ May 2024-** Anticipated Construction Start for I-80 Lehigh River Bridge



MAJOR BRIDGE P3 PACKAGE I



BRIDGE PROJECTS

- A** I-81 SUSQUEHANNA
- B** I-80 NESCOPECK
- C** I-78 LENHARTSVILLE
- D** I-80 LEHIGH
- E** I-80 CANOE CREEK
- F** I-80 NORTH FORK

WEST VIRGINIA

VIRGINIA

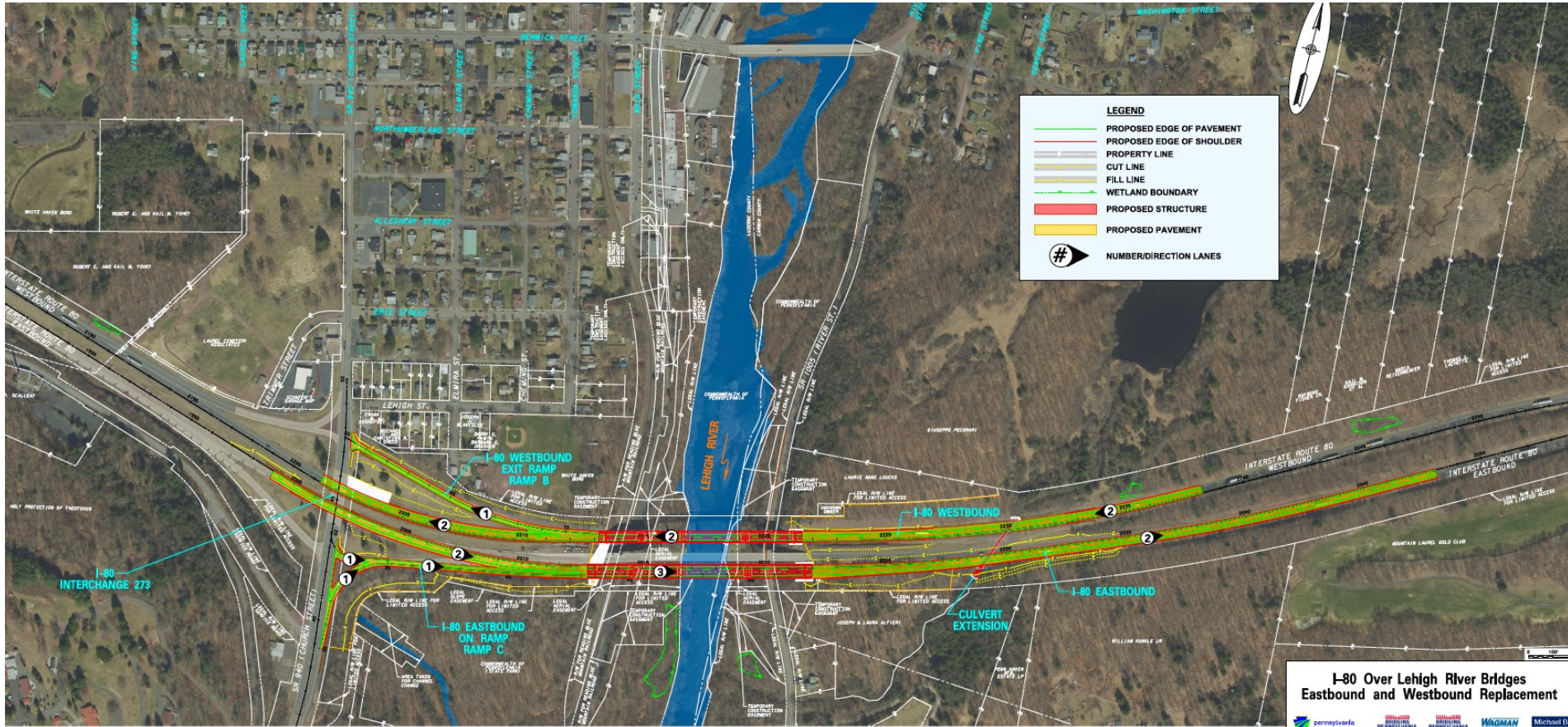
MARYLAND

 PROJECTS MOVING FORWARD UNDER THE MBP3

I-80 Lehigh Project Overview

- The I-80 bridges over the Lehigh River are eastbound/ westbound structures built in 1965 and approaching the end of their serviceable lifespan.
- These bridges cross over the Lehigh River, Lehigh Gorge State Park, Reading Blue Mountain and Northern Railroad and SR 1005 (River Rd.) in Carbon and Luzerne Counties.
- The Project will replace the aging bridges with wider structures, increase the length of the eastbound on-ramp auxiliary lane, the height of the the bridge barriers, and the width of the shoulders to meet current interstate design standards; and improve the safety in the corridor.
- With anticipated Project completion in June 2028, there is a resurfacing project programmed for SR 940 in 2029.

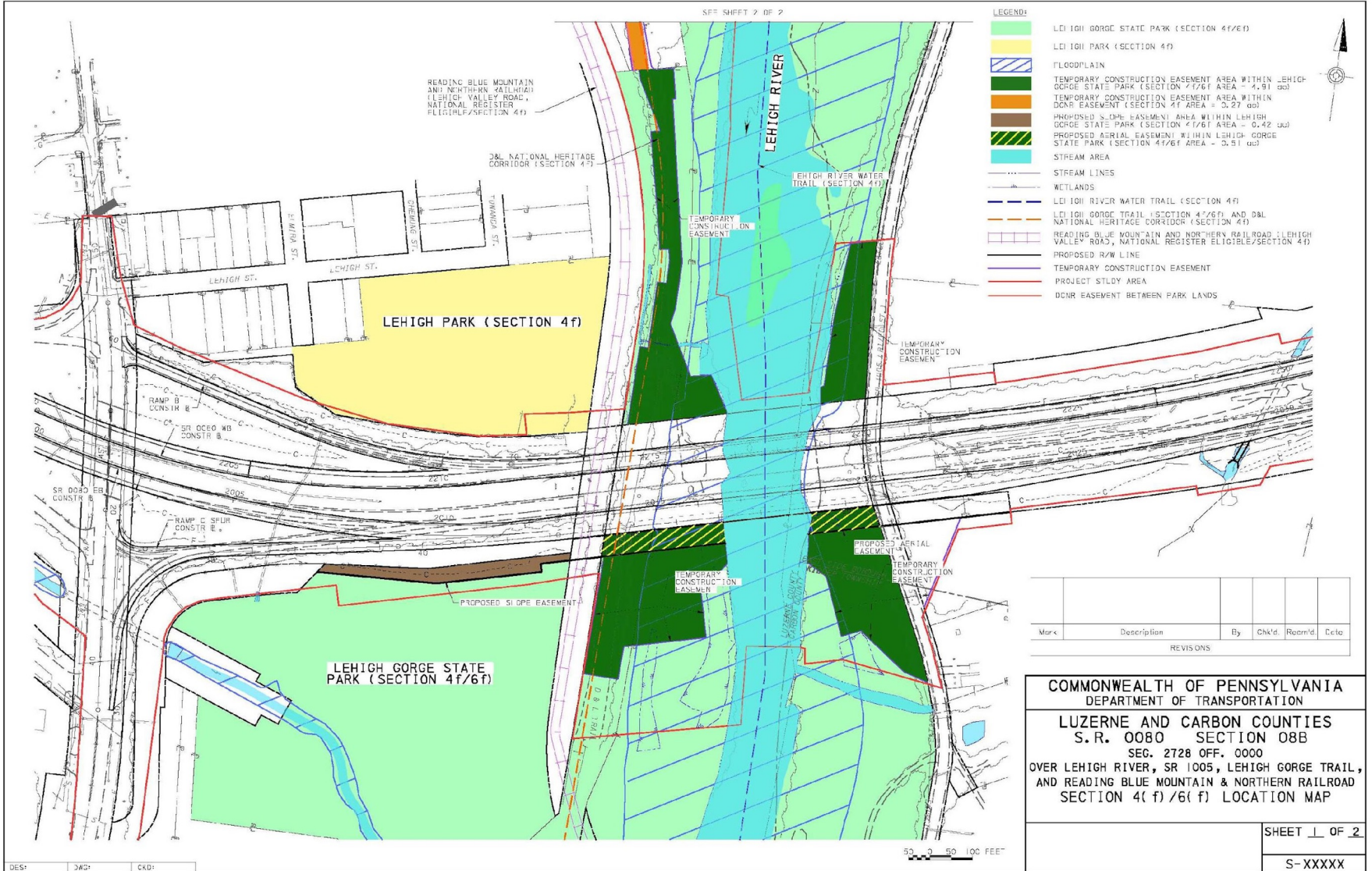
I-80 Lehigh Project Overview



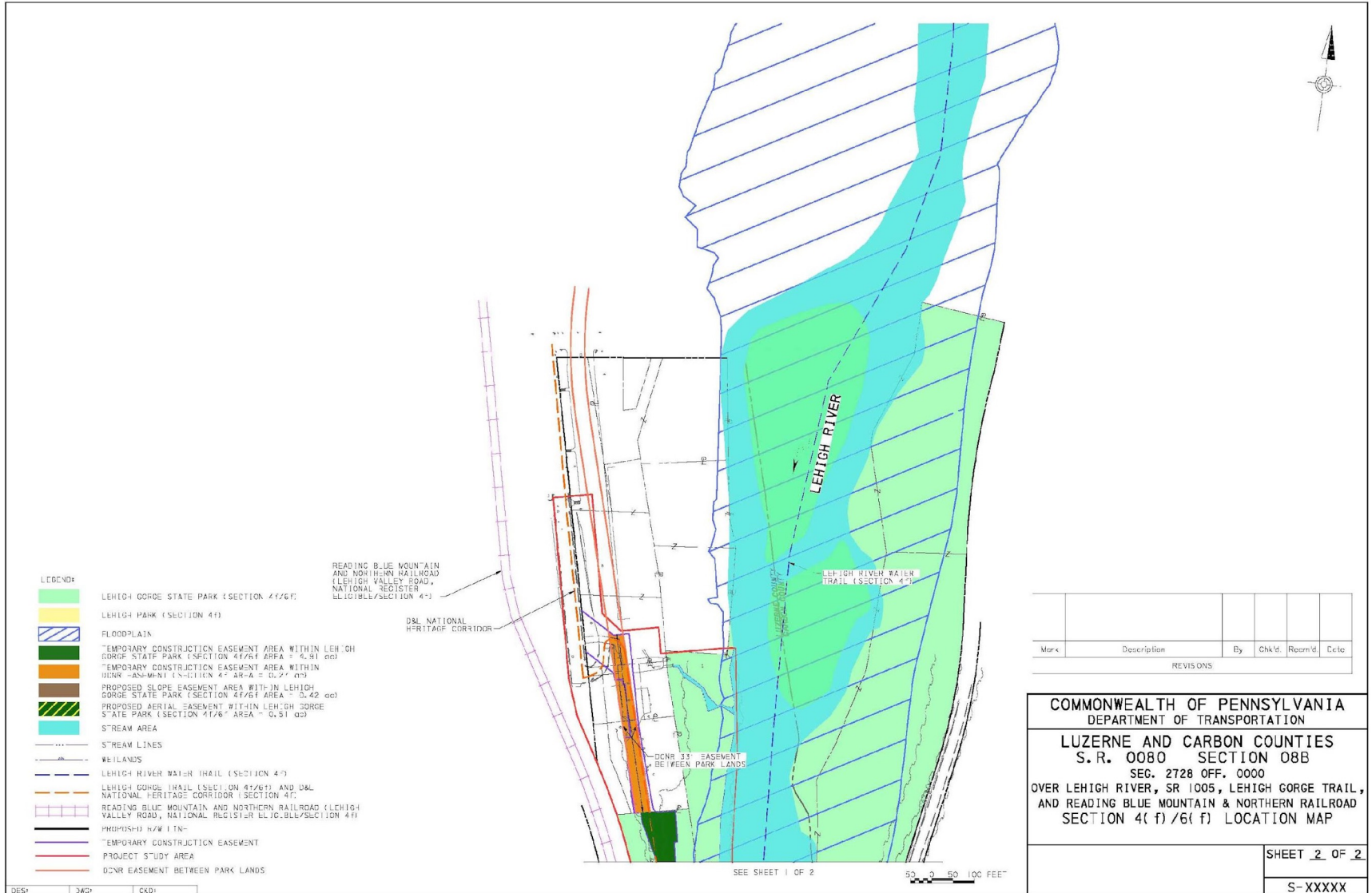
What is Section 4(f) and Section 6(f)?

- The project bridges span a value that includes numerous resources protected under Section 4(f) of the Department of Transportation Act of 1966. Section 4(f), abbreviated here for simplicity, specifies that the Secretary of Transportation may approve a transportation project requiring the use of publicly owned land of a public park, recreational area, or wildlife or waterfowl refuge, or land of a historic site only if there is no prudent and feasible alternative and the project includes all possible planning to minimize harm resulting from the use, or the use is de minimis (negligible).
- Lehigh Gorge State Park (LGSP) is also protected under Section 6(f) of the Land and Water Conservation Fund Act. PennDOT will provide replacement land for Section 6(f) conversion within LGSP totaling approximately 6 acres. Although not requires for Section 4(f) mitigation, this replacement land will also serve as mitigation of the Section 4(f) use of LGSP. The replacement land being provided is forested land, therefore, the replacement land offsets the removal of trees in the construction staging area. Approximately 6 acres of land will be replaced for permanent and temporary impacts within LGSP.

Section 4(f) and Section 6(f) Properties



Section 4(f) and Section 6(f) Properties



Section 4(f) and Section 6(f) Mitigation Measures

- Of these Section 4(f) resource only Lehigh Gorge State Park and Trail and the Lehigh River Water trail will be used by the project. Anticipated impacts to these resources have been identified in the I-80 Lehigh River CE under Parks & Recreational Areas and can be found on the project website. Mitigation measures will include:
 - Advance notice of trail closures will be provided to DCNR, the Borough of White Haven, and the public.
 - The contractor may temporarily realign the 10' trail through the project site
 - If necessary, due to pier locations, reconfiguration of the driveway, parking, or boat launches will be coordinated with DCNR
 - Aids to Navigation Plan will be implemented to include advance signing, with additional advanced notification to DCNR and the public
 - The contractor will restore disturbed areas, and full access to the park amenities will be provided upon completion.

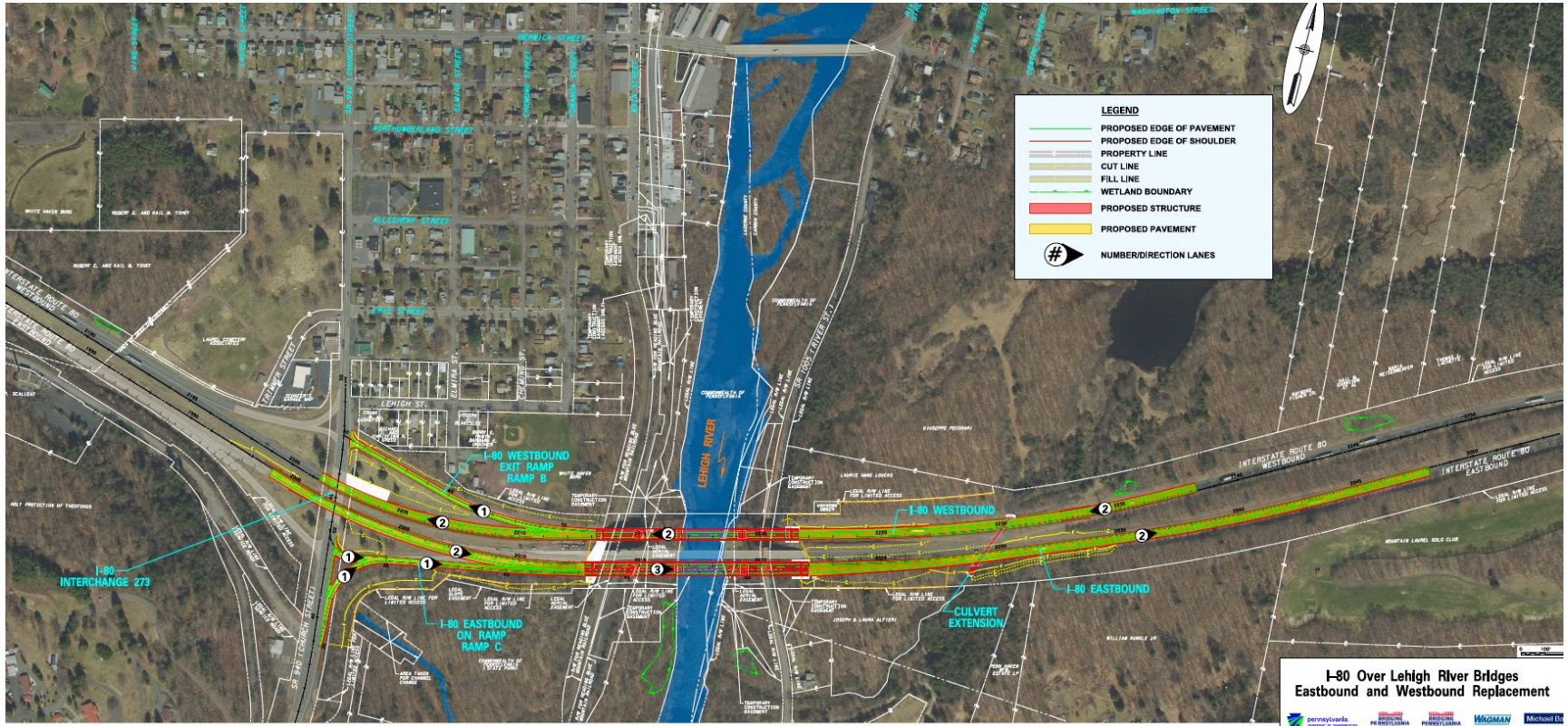
Section 4(f) Resource	4(f) Criteria	Additional Information
Lehigh Gorge State Park and Lehigh Gorge Trail (also Delaware & Lehigh National Heritage Corridor)	Publicly Owned Park/Recreational Land	PA DCNR; also Outstanding Scenic Geologic Feature of PA
Lehigh Park	Publicly Owned Park/Recreational Land	White Haven Borough
Lehigh River Water Trail	Publicly Owned Park/Recreational Land	Recreational river and PA Scenic Rivers System (scenic designation)
Lehigh Valley Railroad/Reading Railroad	Historic Resource	National Register of Historic Places Eligible



**Pre-Construction and Current Activities:
Michael Baker**

I-80 Lehigh Project Overview

- The Project will replace the aging bridges with wider structures, increase the length of the eastbound on-ramp auxiliary lane, the height of the bridge barriers, and the width of the shoulders to meet current interstate design standards; and improve the safety in the corridor.



Project Overview

- Complete Reconstruction of the two bridges carrying I-80 Eastbound (EB) and Westbound (WB) over Reading Blue Mountain & Northern Railroad, Lehigh Gorge Trail, Lehigh River, and SR 1005 in White Haven Borough, Luzerne County and East Side Borough and Kidder Township in Carbon County.
 - Includes roadway pavement, storm sewer upgrades, stormwater management facilities, all new signing and pavement markings, the construction of two bridges, and the rehabilitation and lengthening of one existing box culvert.
- Two main stages of construction, each with various sub-phases. Anticipate over four years of construction (Spring 2024 thru Summer 2028).
- Two lanes of traffic will be maintained along I-80 in both directions at all times, with the exception of short-term lane closures as required during off peak hours and an anticipated two-week duration of single lane condition for I-80 EB.



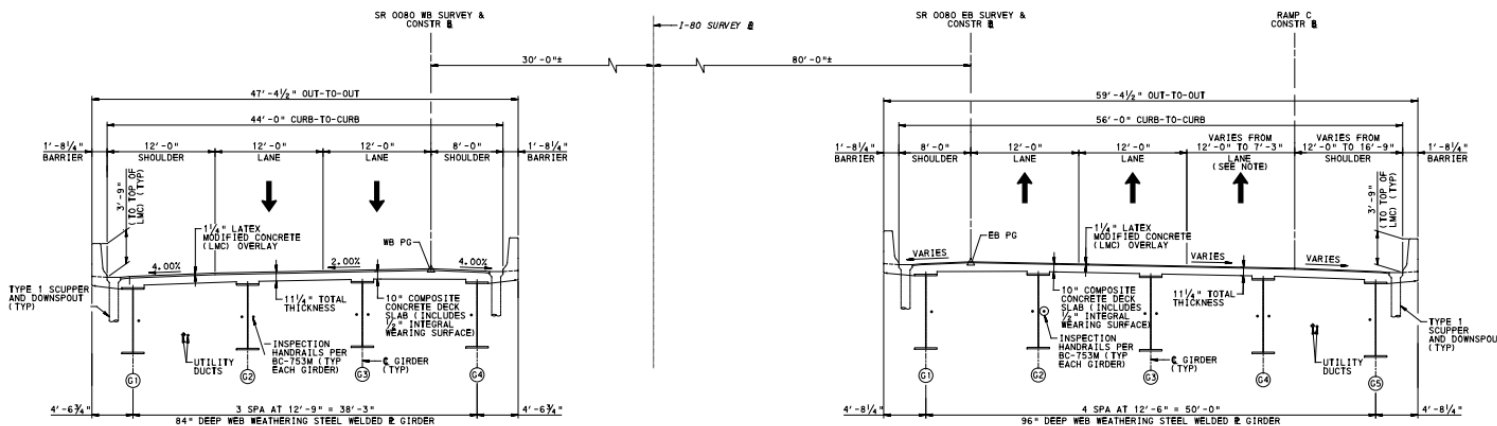
Project Overview

Roadway:

- Reconstruction of I-80 approaches: Two 12' lanes with 12' outside and 8' inside shoulders.
- Reconstruction of I-80 WB off-ramp and EB on-ramp at Exit 273 (White Haven / Freeland)

Structures:

- Replacement of I-80 bridges: Four-span continuous composite steel plate girder bridges
- EB bridge 855' long and WB bridge 770' long plus concrete approach slabs
- Two 12'-0" travel lanes with 8'-0" inside and 12'-0" outside shoulders. The EB structure also carries the EB on-ramp lane across full length of structure.



BRIDGE TYPICAL SECTION
NOT TO SCALE

NOTE:
LANE BEGINS TAPER AT END OF RAMP C B

Project Overview

Right-of-Way:

- Seven Right-of-Way claimants for various permanent and temporary acquisitions

Utilities:

- Overhead utility line relocations along SR 1005 to accommodate construction access

Environmental/Permits:

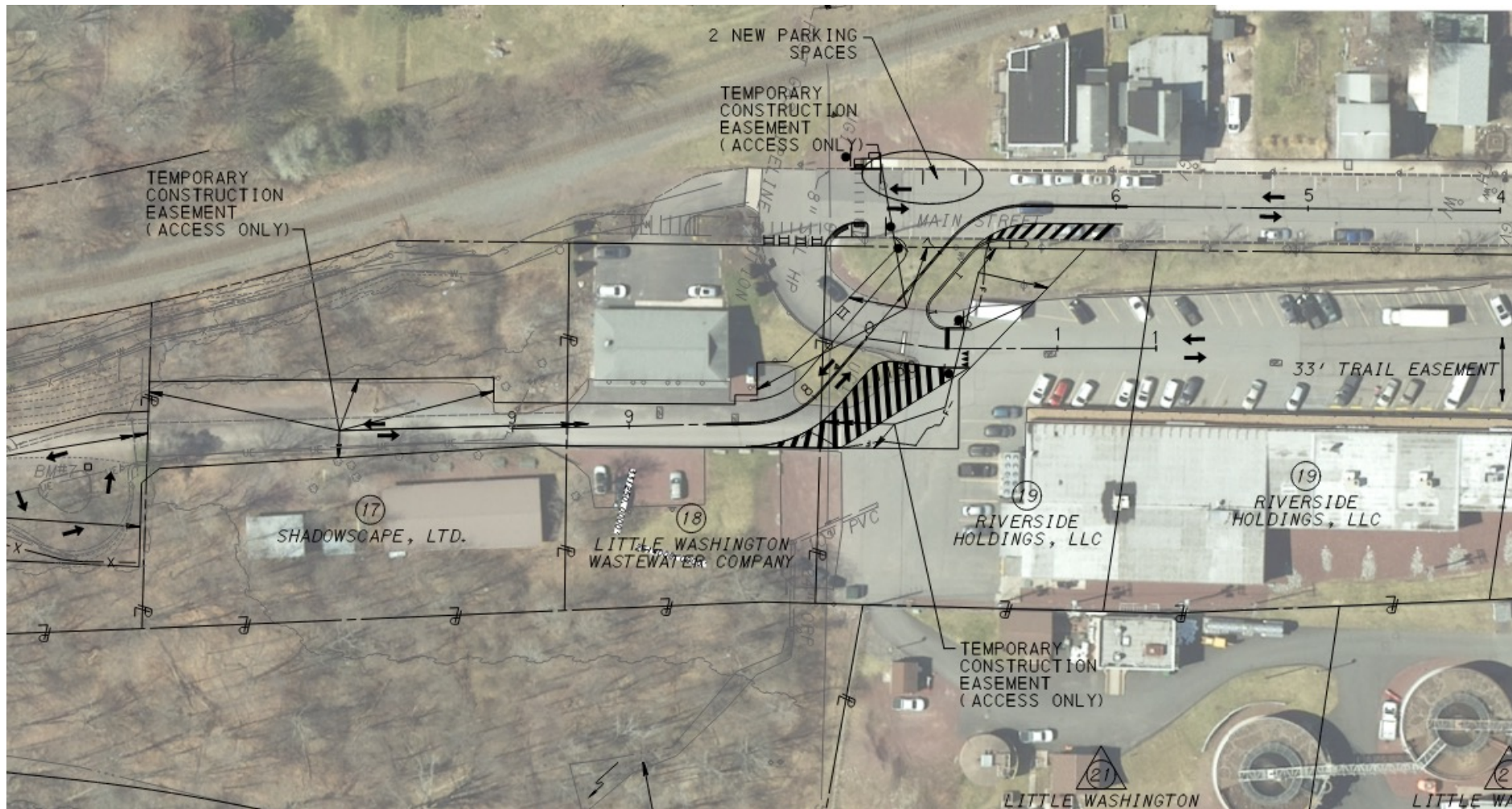
- NPDES Individual Permit (earth disturbance)
- PADEP Joint Permit Application (Water Obstruction and Encroachment Permit)

Signing and Pavement Markings:

- All new signs and pavement markings

APPROVED Temporary Construction Access Point

The approved Temporary Construction Access Point for the project is shown below:

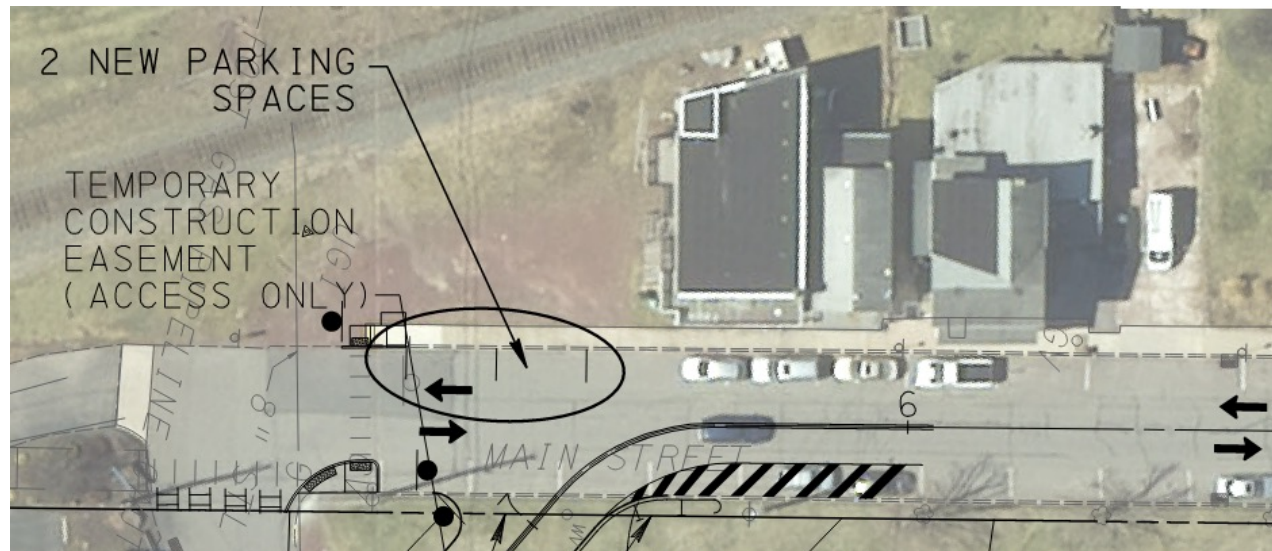


Proposed Access Features Include:

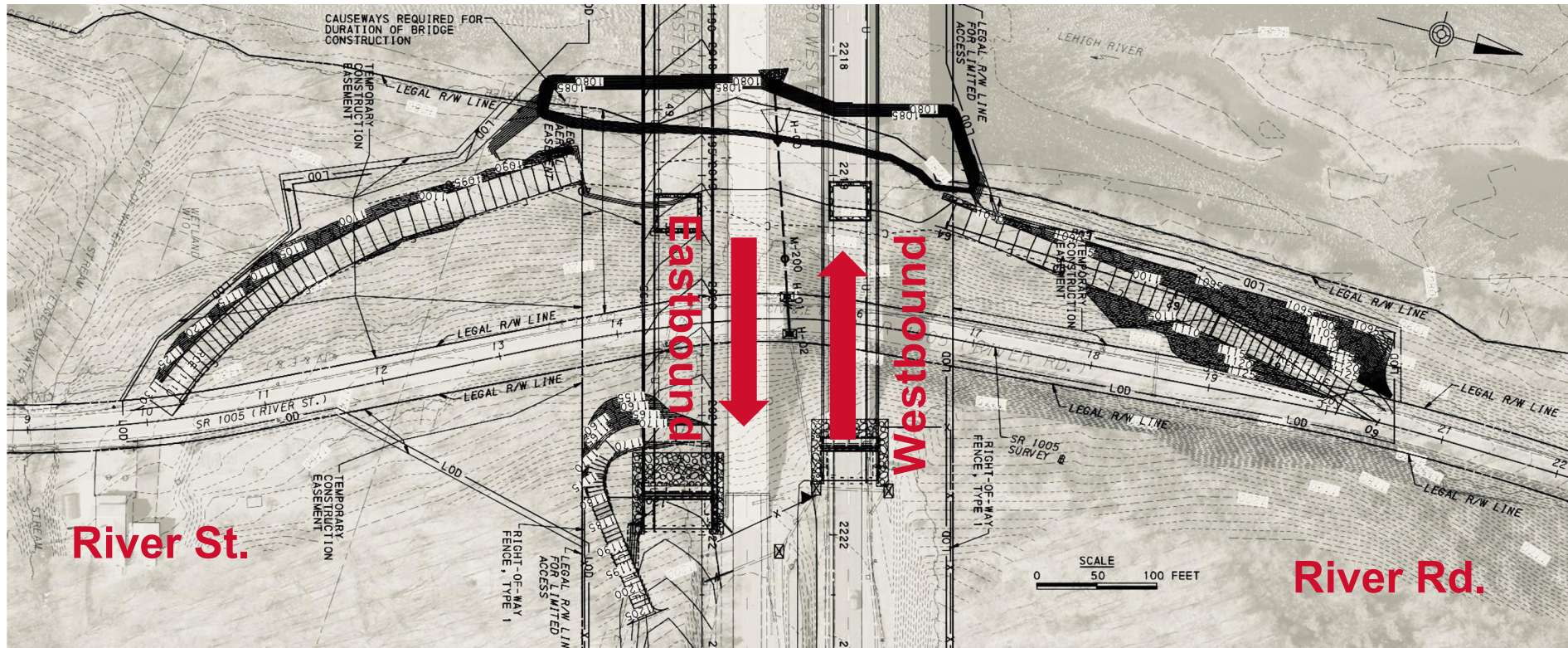
- Current access conditions to be restored post-construction
- Maintains Lehigh Gorge Trail access
- Provides bi-directional traffic from Main Street to Lehigh Gorge Trail access road.
- Provides bi-directional access to/ from White Haven Shopping Center

Impacts to Public Parking

- Current parking conditions to be restored post-construction
- Net of four (4) parking spaces to be temporarily unavailable during construction.
 - Temporary closure of six (6) parking spaces along Northbound side of Main St.
 - Temporary addition of two (2) parking spaces along Southbound side of Main St.



Temporary Eastern Access Point



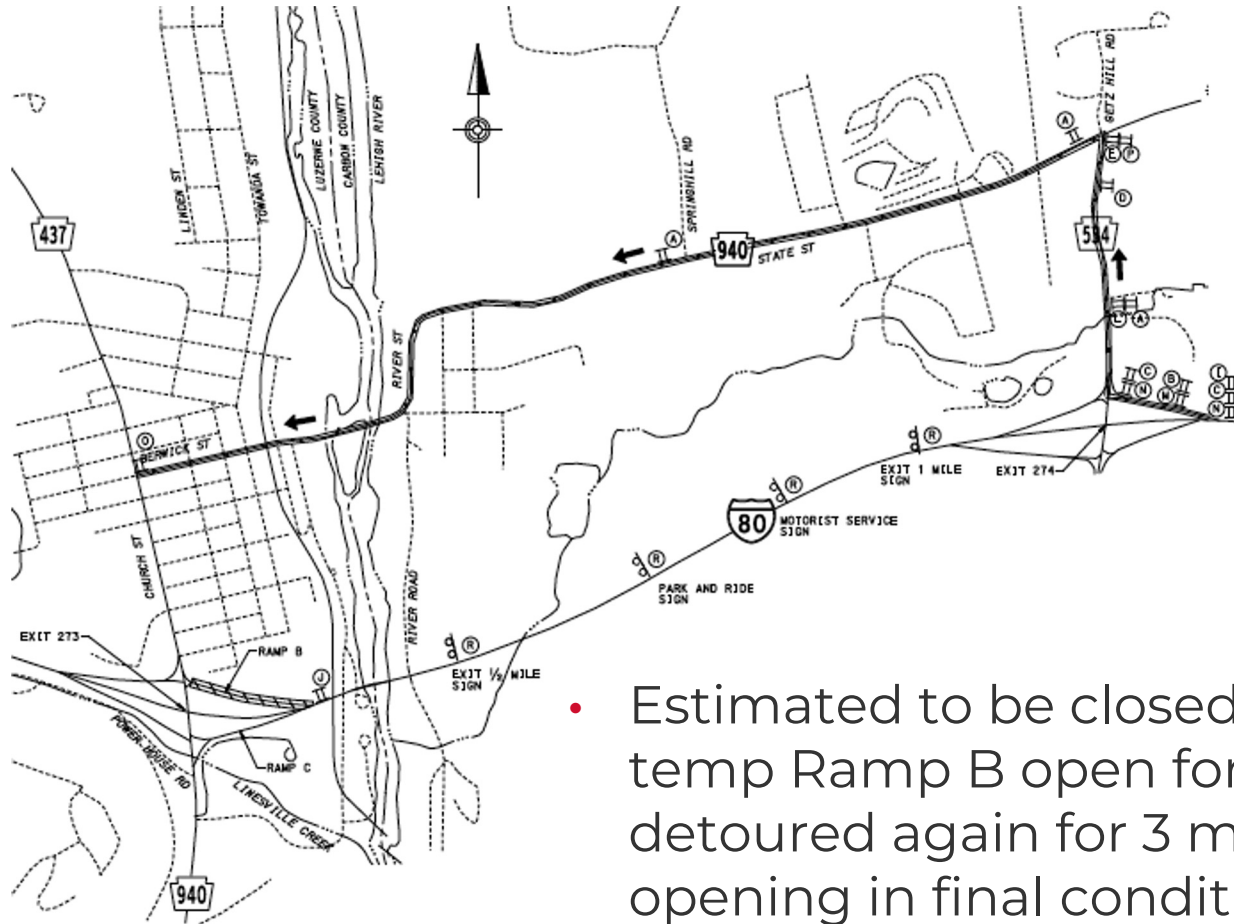
Key Upcoming Detour Features:

- Each detour will be complemented with applicable public outreach and notification.
- Traffic control measures will be in place with appropriate signage.
- It is always our goal to deliver a safe experience and minimize the impact to the communities in which we work.

Upcoming Detour Features Include:

- Separate vehicular and truck detours required for I-80 WB off-ramp (Ramp B) for ramp reconstruction.
 - Estimated to be closed for 5-month duration, temp Ramp B open for estimated 12 months, detoured again for 3 months prior to re-opening in final condition
- Separate vehicular and truck detours required for I-80 EB on-ramp (Ramp C) for ramp reconstruction.
 - Estimated to be closed for 6-month duration
 - Detour
- River Road
 - Detour to be utilized through Project duration April 2024 to June 2028.
- D&L Trail- As needed/ permitted for activities such as demolition and erection.

I-80 WB Off-Ramp (Ramp B) Detour- Passenger Cars



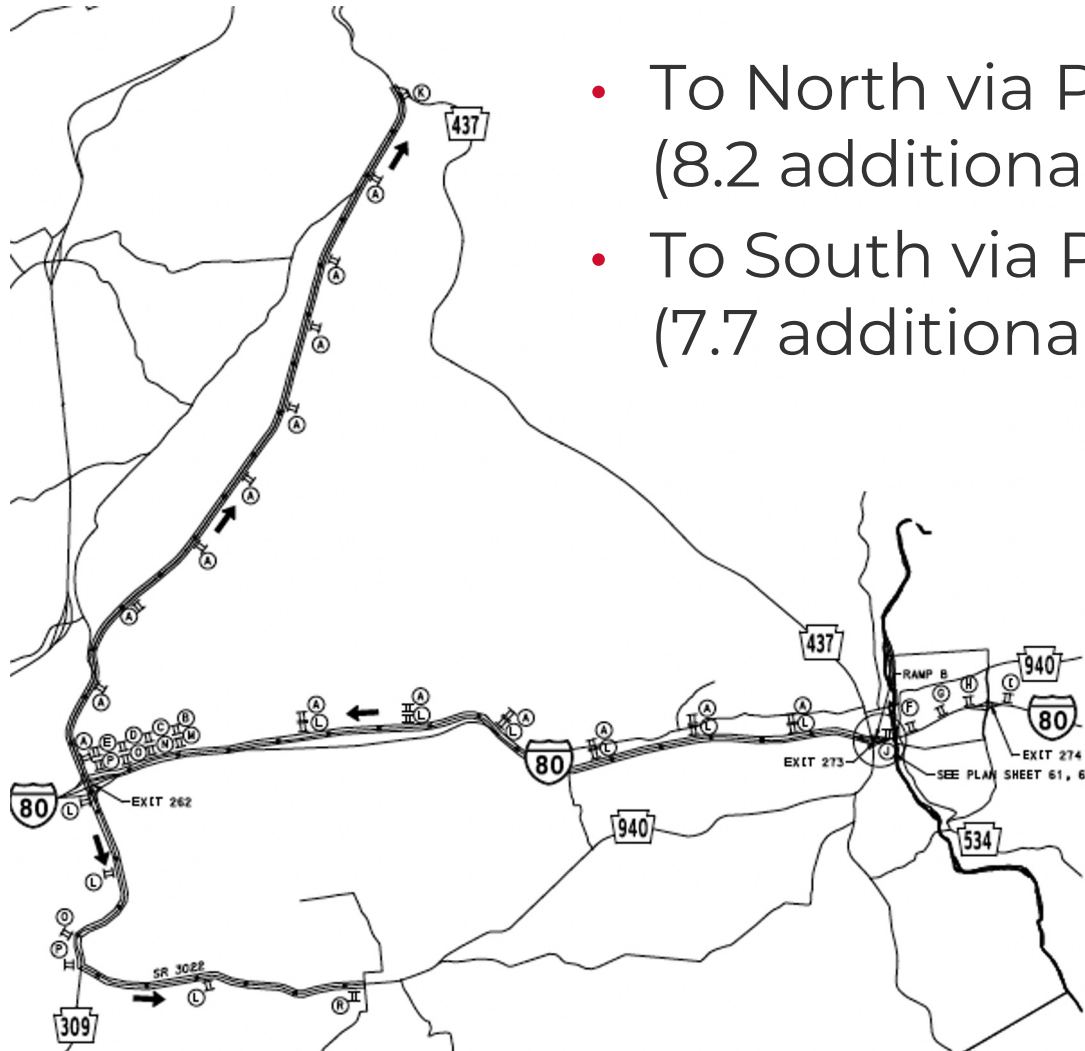
- 2.25 Total Miles (0.6 additional mileage)
- Exit 274
- SR 534
- State St (SR 940)
- Church St to Exit 273

- Estimated to be closed for 5-month duration, temp Ramp B open for estimated 12 months, detoured again for 3 months prior to re-opening in final condition

TRAFFIC CONTROL PLAN
RAMP B PASSENGER CAR DETOUR

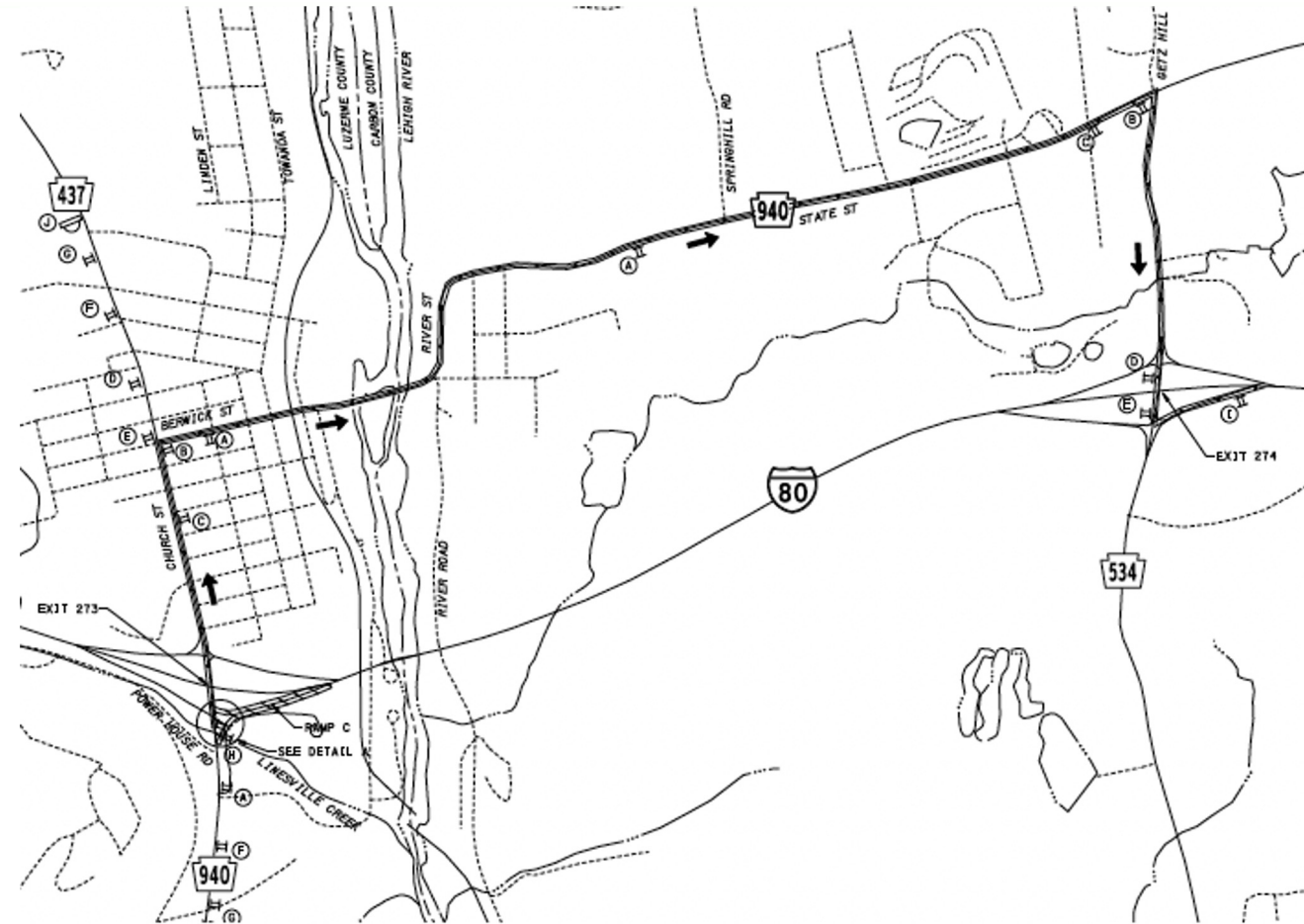
I-80 WB Off-Ramp (Ramp B) Detour-Trucks

- To North via PA 309- 20 miles total (8.2 additional mileage)
- To South via PA 940 – 15.3 miles total (7.7 additional mileage)



TRAFFIC CONTROL PLAN
RAMP B TRUCK DETOUR

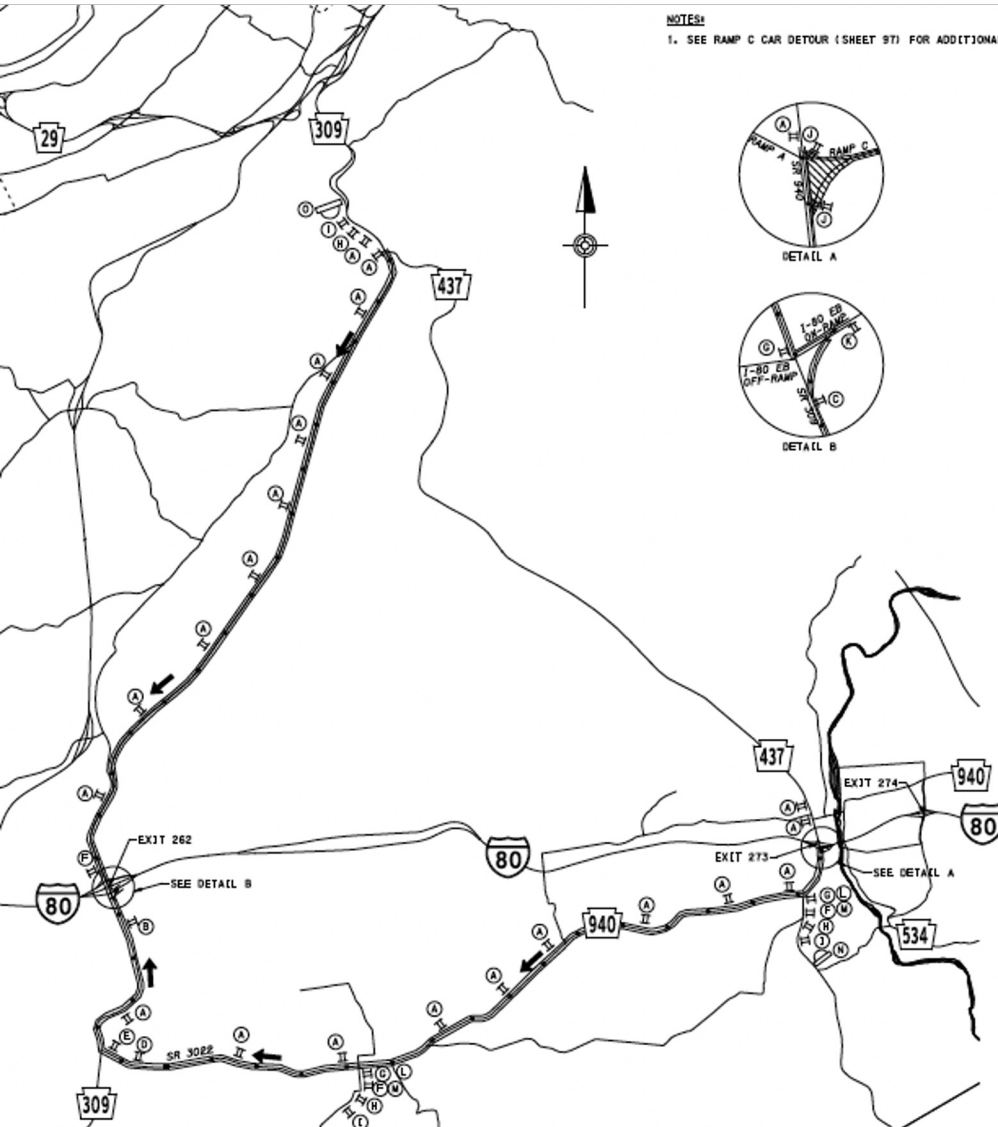
I-80 EB On-Ramp (Ramp C) Detour- Passenger Cars



- 2.75 miles total (1.0 additional mileage)
- Church St.
- Berwick St/
River St/ State St
(SR 940)
- SR 534 to Exit
274
- Estimated to be
closed for 6-
month duration

TRAFFIC CONTROL PLAN
RAMP C PASSENGER CAR DETOUR

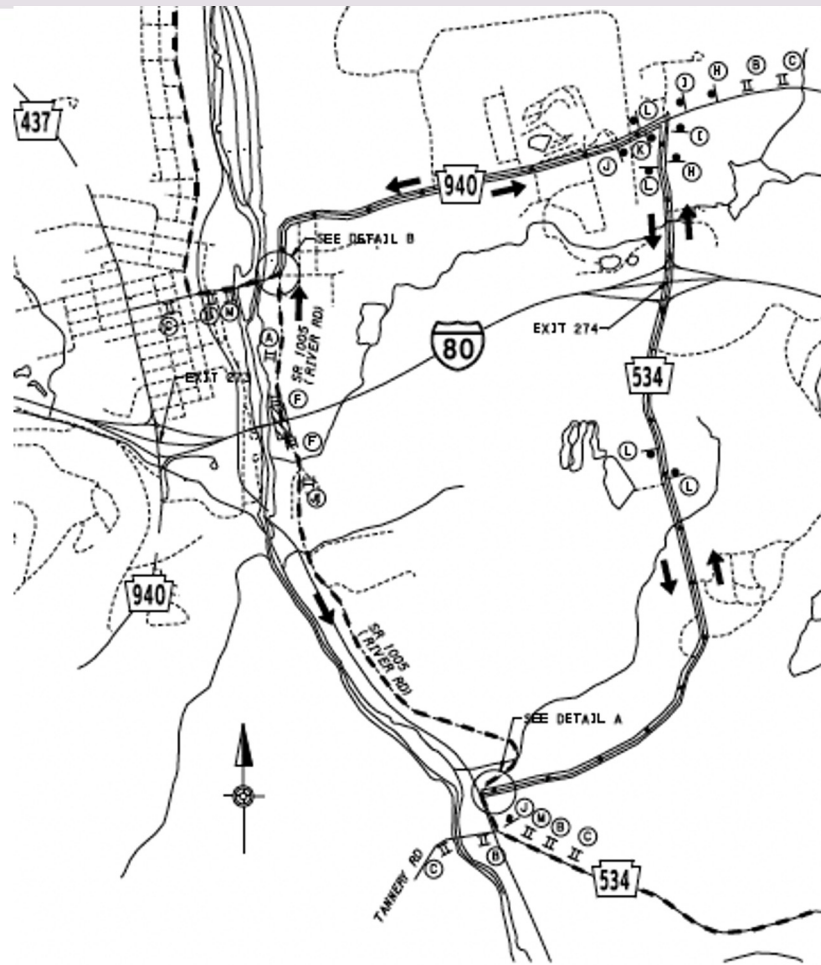
I-80 EB On-Ramp (Ramp C) Detour-Trucks



- From North via SR 309 – 20 mi total (8.2 additional mileage)
- From White Haven via SR 940 – 23.6 miles total (23.6 additional mileage)
- Estimated 6- month duration

TRAFFIC CONTROL PLAN
RAMP C TRUCK DETOUR

River Rd (SR 1005) & Bike Route L Detour



TRAFFIC CONTROL PLAN
SR 1005 & BICYCLE ROUTE L DETOUR

- Portion of SR 1005 to be detoured throughout construction to accommodate construction access to Lehigh River.
- Utilizes SR 534 & SR 940, and includes Bike Route L.
- 3.5 miles total (1.7 additional mileage)



**Upcoming Construction Schedule & Activities
Wagman**

Introduction to Wagman

- Wagman is a fourth-generation family-owned business of over 120 years headquartered in York, PA with additional offices in Dinwiddie, VA and Berryville, VA.
- Wagman offers general, geotechnical, and heavy civil construction services including latex modified concrete and grooving and grinding operations throughout the Mid-Atlantic.
- Our **core** values are the foundation of our company and reflect our guiding principles:
 - **Integrity, Innovation, Mutual Respect, Sense of Urgency, Safety, and Community**
- Wagman is the designated Major Bridge subcontractor to BPC tasked with the replacement of the I-80 EB & WB structures over the Lehigh Gorge State Park, D&L Trail, RBM&N RR, Lehigh River, and SR 1005 – River Rd.
- Other significant project elements include the rebuilding of Ramps B & C at the SR 940 interchange, mainline paving, and a culvert extension on I-80 EB.



Wagman Scope of Work

- General Sequence of Construction – Approx. 4 years beginning Spring 2024
- New I-80 EB structure & culvert extension to the south of existing on a new alignment
- Place I-80 EB traffic onto the new structure
- Crossover I-80 WB traffic onto old I-80 EB
- Demo and replacement of I-80 WB Structure on the current alignment
- Restore I-80 WB traffic pattern
- Demo old I-80 EB Structure



I-80 Lehigh Subcontracting & Supplier Opportunities



Anticipated list of potential Subcontracting & Supplier Opportunities:

- Concrete Accessories
- Concrete Pumping
- Material Testing
- Electrical (Temp Lighting)
- Saw-cutting
- Precast barrier wall
- Geotextile
- Scuppers
- Bridge Conduit/ Utilities
- Protective Coatings/Sealers
- Trucking
- Structural Steel Diaphragms
- Topsoil
- Fuel

Visit [JOBS.WAGMAN.COM](https://www.jobs.wagman.com) to learn more

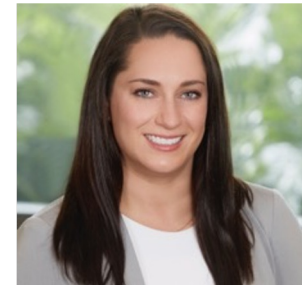




Get Involved: DBE & Workforce Opportunities
MTI

Our DBE & Workforce Development Team

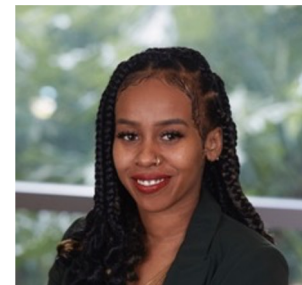
BPD-I & BPC's local team will be coordinated by Modern Times Inc.



Alex Cann

BPD-I/BPC Diversity & Inclusion Manager

- Modern Times, Inc (MTI)
 - Liaison with PennDOT
 - Compliance & Oversight of DBE/ SBE, On-the-Job Training (OJT), Diversity & Inclusion programs
 - Outreach coordinator, small business and workforce diversity advocate



Jasmine Brevard



Q&A and How to Stay Informed

Next Steps & Contacts Info

BPD-I Public Information Office
PIC Hotline: (717) 500-6088
PublicInformationOffice@PennBridges.com

BPD-I Public Information Manager
Carla Julian
Carla@moderntimesinc.com

BPD-I Equal Employment Opportunity
Manager
Alex Cann
Alexandra@moderntimesinc.com

**Thank you for joining us today, please utilize
this time for any unanswered QUESTIONS or
comments you may have for the team.**

District 5 I-80 Over Lehigh River Bridge
PennDOT
Community Relations Coordinator
i80LehighRiverBridge@pa.gov

For Project updates visit:
www.penndot.pa.gov/i80LehighRiverBridge

For Contracting Opportunities visit:
BridgingPennsylvaniaDevelopers1.com





THANK YOU FOR ATTENDING!



March 7, 2024