



PENNDOT MAJOR BRIDGE P3- I-78 LENHARTSVILLE BRIDGE



Bridging Pennsylvania Developers I & Bridging
Pennsylvania Constructors
I-78 Lenhartsville Pre-Construction Public Meeting

May 15, 2024

How to MAXIMIZE today:

- **PUBLIC MEETING:** It is our intention to address all previously identified questions and comments during today's presentation, please hold your questions until the Q&A portion, as they may be answered throughout the presentation.
- **PUBLIC SERVICE ANNOUNCEMENT:** If you are attending this meeting and currently have ongoing PennDOT real estate negotiations, those inquiries are considered private and will not be discussed in a Public Meeting setting. Should you wish to address any specific real estate questions, please speak with the team following this meeting to be connected to a representative.

Agenda

- Welcome & Introductions
- Program & Project Updates
- Pre-Construction and Current Activities
- Upcoming Construction Schedule Activities
- Get Involved: DBE & Workforce Opportunities
- Closing Remarks & How to Stay Informed



Welcome & Introduction

Meet the I-78 Lenhartsville Team





PennDOT- Program & Project Update

PENNDOT MAJOR BRIDGE P3



KEY DATES

- **November 2020-** The Major Bridge P3 (MBP3) was approved by the Pennsylvania P3 Board, for the replacement or rehabilitation of nine major interstate bridges throughout a progressive P3 delivery model.
- At that time, PennDOT planned to make annual payments to pay for the work and financing costs on these bridges using mandatory tolling, as was permitted by the Pennsylvania P3 law.
- **Since that time, Act 84 of 2022 amended the P3 law to eliminate mandatory tolling of existing free lanes. The act also preserved the department's ability to continue the MBP3 and move forward with the Predevelopment Agreement (PDA) with Bridging Pennsylvania Partners (BPP).**

PENNDOT MAJOR BRIDGE P3



HISTORICAL KEY DATES

- **August 2022-** PennDOT chose to move the bridge projects in the MBP3 forward without tolling and pay for the project(s) using existing funds to make annual payments to the development entity over 35 years.
- **December 2022-** Financial Close is achieved on Package I, including six (6) bridges
- **Spring 2024-** Bridging Pennsylvania Constructors (BPC) and designer, Benesch begin performing pre-construction surveying, meeting with local property owners & key stakeholder groups including local municipalities, EMS, schools, local businesses and impacted members of the public.
- **Summer 2024-** Anticipated Construction Start for I-78 Lenhartsville Replacement Project





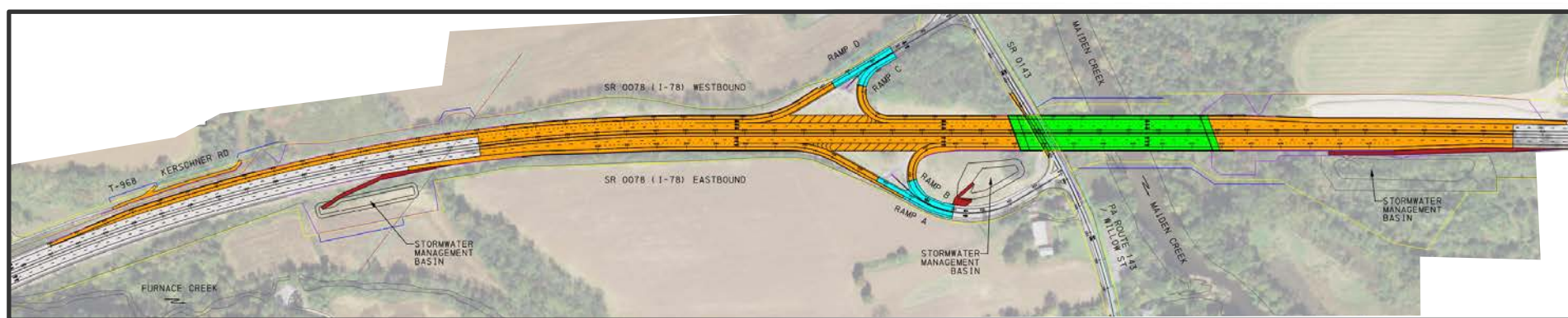
**Pre-Construction and Current Activities:
Benesch**

I-78 Lenhartsville Project Overview

- **The SR 0078 (I-78) bridge is an eastbound/westbound structure that was built in 1955 and last rehabilitated in 1985. The bridge carries over 57,000 vehicles daily, with 32% of those being trucks.**
- **The bridge crosses over SR 0143 (PA Route 143) and the Maiden Creek in Greenwich Township, Berks County.**
- **The project will replace and widen the existing bridge accommodating the addition of auxiliary lanes and full inside/outside shoulders on I-78 in both directions to provide a consistent typical section along the corridor.**
- **In addition to replacing and widening the existing bridge, the acceleration and deceleration lane lengths for the adjacent Lenhartsville interchange ramps will be extended to accommodate current design standards.**

I-78 Lenhartsville Project Overview

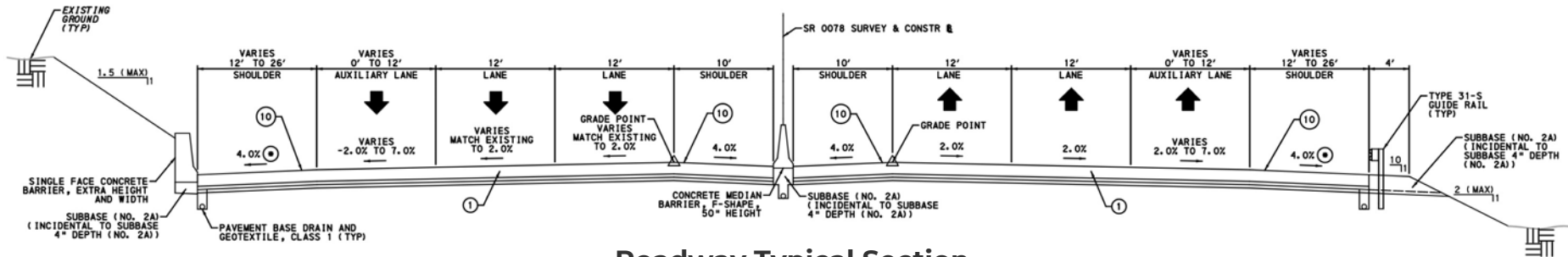
- Additional roadway improvements include:
Pavement reconstruction, storm sewer upgrades, stormwater management facilities, all new signing and pavement markings, and roadside appurtenances (guide rail and barrier).
- The anticipated project start date is Summer 2024, with an anticipated project completion date of Summer 2028.
- Two lanes of traffic will be maintained along mainline I-78 in both directions, except for short-term lane closures during off peak hours.



I-78 Lenhartsville Project Overview

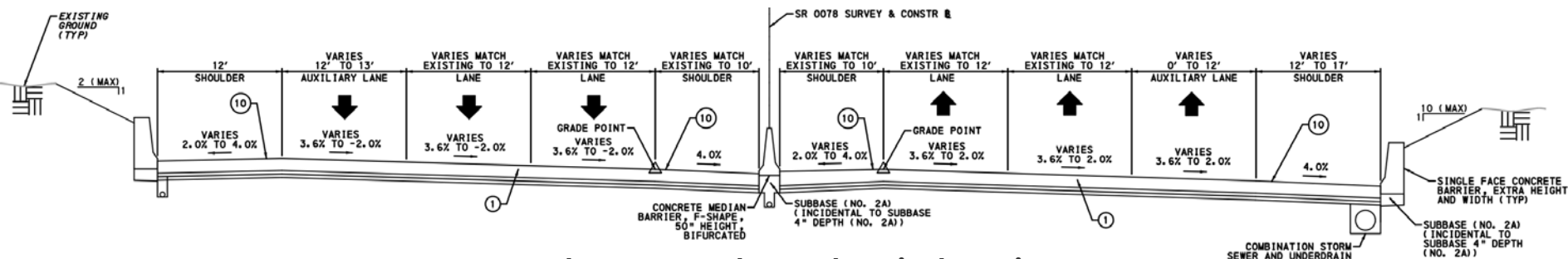
Roadway:

- Reconstruction of I-78 approaches: 2-12' travel lanes with 12' auxiliary lanes and 10' (minimum) shoulder widths along the corridor.
- Reconstruction of all Lenhartsville interchange ramps at the interface with I-78.



Roadway Typical Section

Not to Scale



Roadway Superelevated Typical Section

Not to Scale

- Existing I-78 bridge: Six-span steel girder bridge.
- Proposed I-78 bridge: 615' long five-span P/S bulb-tee (concrete) beam bridge with concrete approach slabs.
- 2-12' travel lanes with 10' inside and 12' outside shoulders, along with 12' auxiliary lanes in both directions.



I-78 Lenhartsville Project Overview

Right-of-Way:

- Right-of-way and temporary easements previously acquired as part of the project.

Utilities:

- Along SR 0143 – Existing overhead electric line to be temporarily removed during construction and replaced after construction.
- Along SR 0143 – Existing overhead telecommunications/cable line to be permanently relocated underground to avoid conflict.
- Along SR 0078 – Overhead electric utility spanning I-78 approximately 0.4 miles west of the Lenhartsville structure will also be replaced.

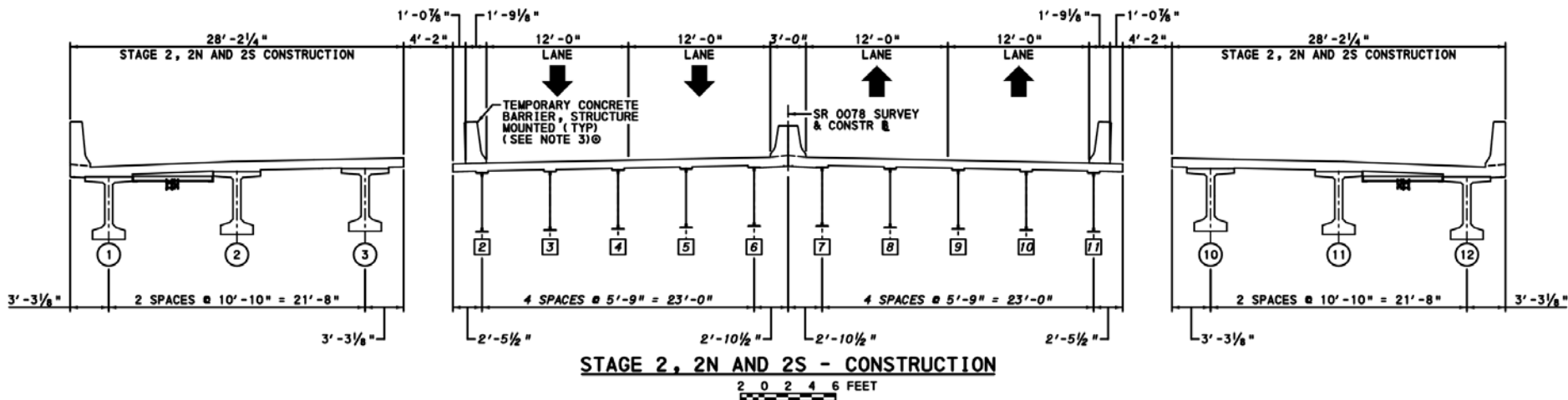
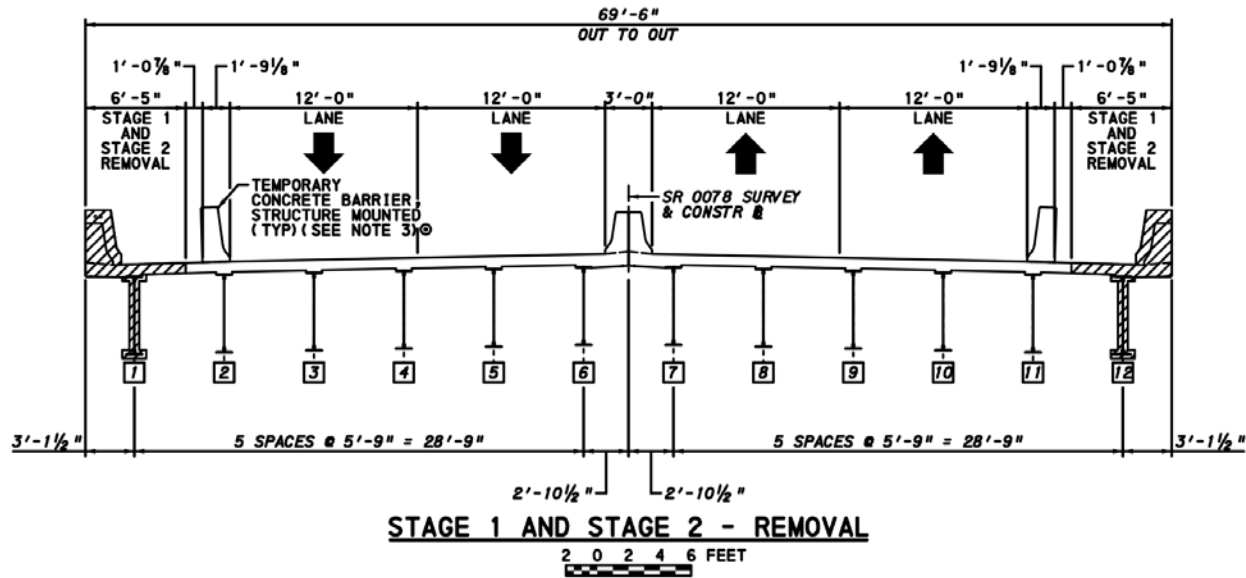
Environmental/Permits:

- NPDES Individual Permit (Earth Disturbance).
- PADEP Joint Permit Application (Water Obstruction and Encroachment Permit).

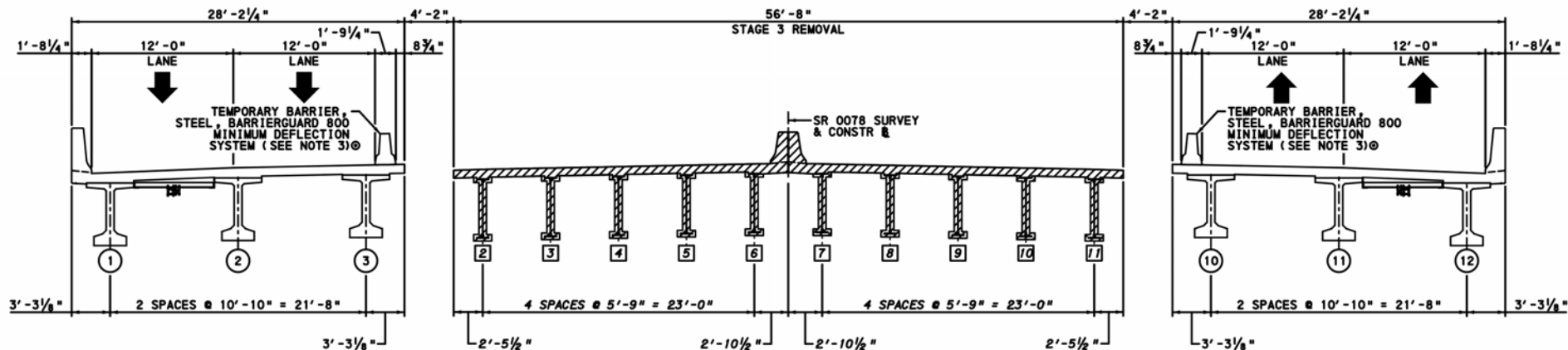
Key Traffic Control Features

- Various short-term lane-shifts, lane closures, and ramp closures are anticipated during construction.
- Each detour will be complemented with applicable public outreach and notification.
- Any lane closures on I-78 needed will take place during off-peak hours to limit public disturbance.
- Traffic control measures will be in place with appropriate signage.
- **It is always our goal to deliver a safe experience and minimize the impact to the communities in which we work.**

I-78 Lenhartsville Construction Staging – Stage 1, 2, 2N, and 2S

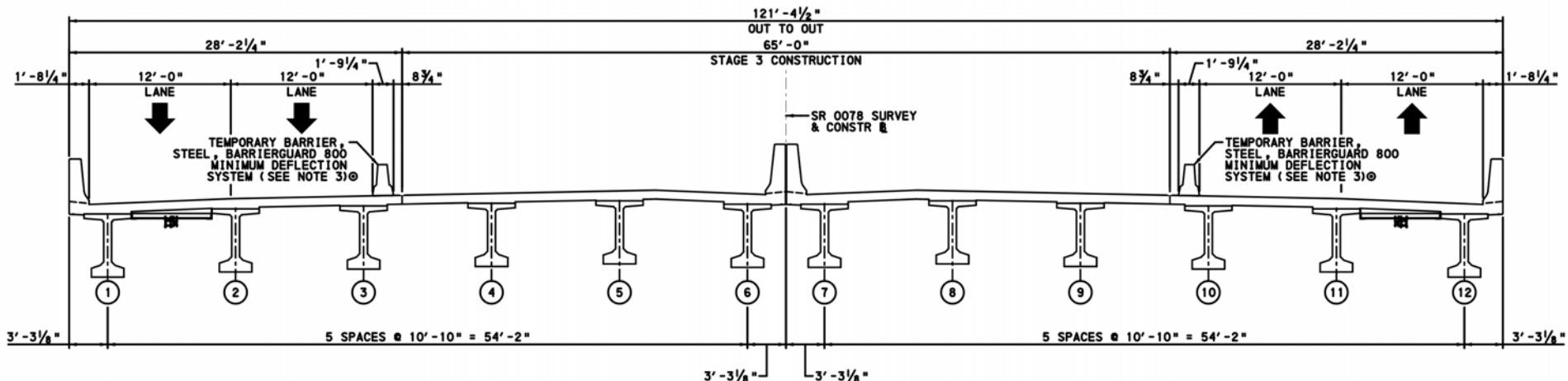


I-78 Lenhartsville Construction Staging – Stage 3



STAGE 3 - REMOVAL

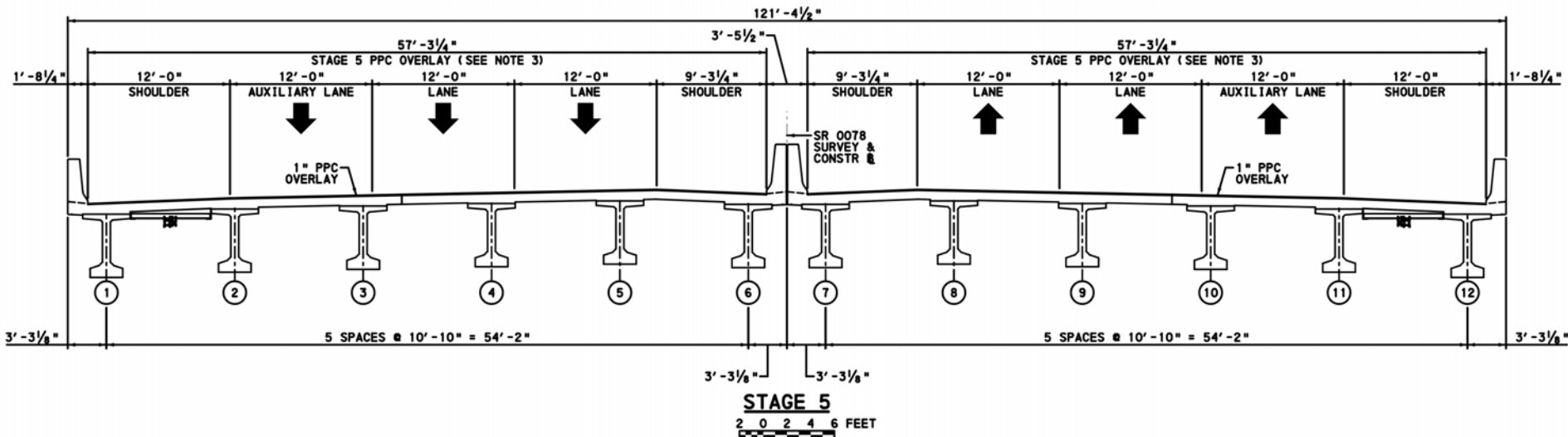
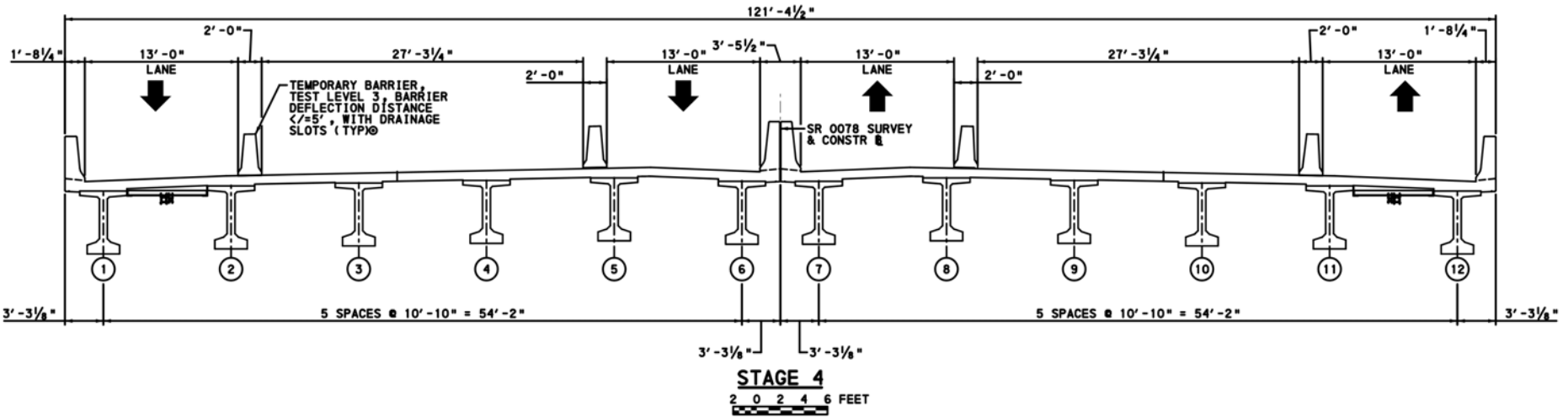
2 0 2 4 6 FEET



STAGE 3 - CONSTRUCTION

2 0 2 4 6 FEET

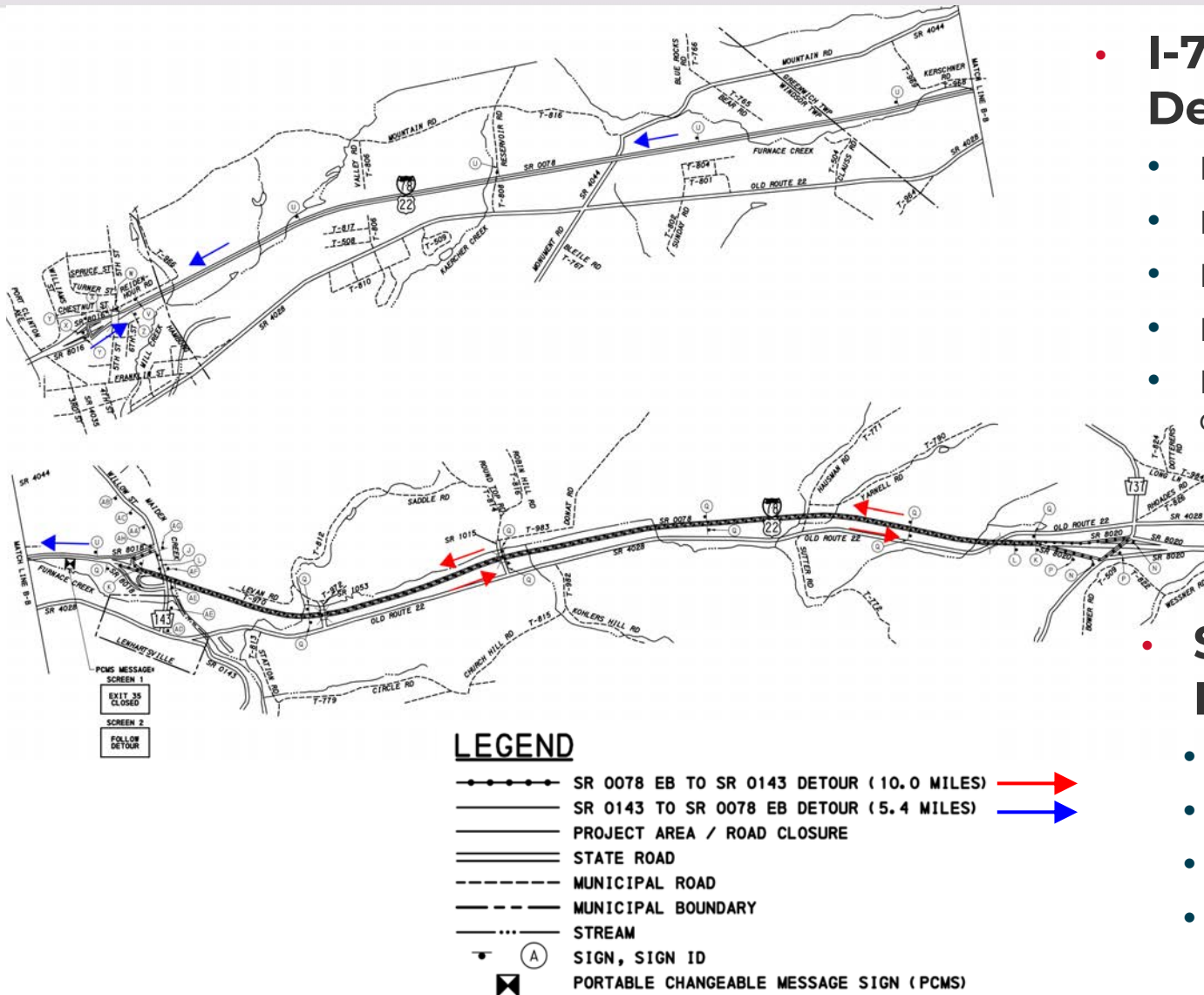
I-78 Lenhartsville Construction Staging – Stage 4 and 5



I-78 Lenhartsville Detours

- **Long-term ramp closures** are necessary to complete the I-78/SR 0143 interchange reconstruction.
 - Ramps A and B (EB On and Off Ramps, South of I-78) will be closed for a 21-day calendar period.
 - Ramps C and D (WB On and Off Ramps, North of I-78) will be closed for a 21-day calendar period.
 - All four ramps are prohibited from being closed simultaneously. No no other ramp closure combinations are permitted.
- **Short-term SR 0143 closures** are necessary during Stage 2 and 3 for bridge construction activities.
 - SR 0143 full closures are only permitted during off-peak hours.

I-78/SR 0143 Southern Ramps (Ramps A and B) Detour – Stage 2S



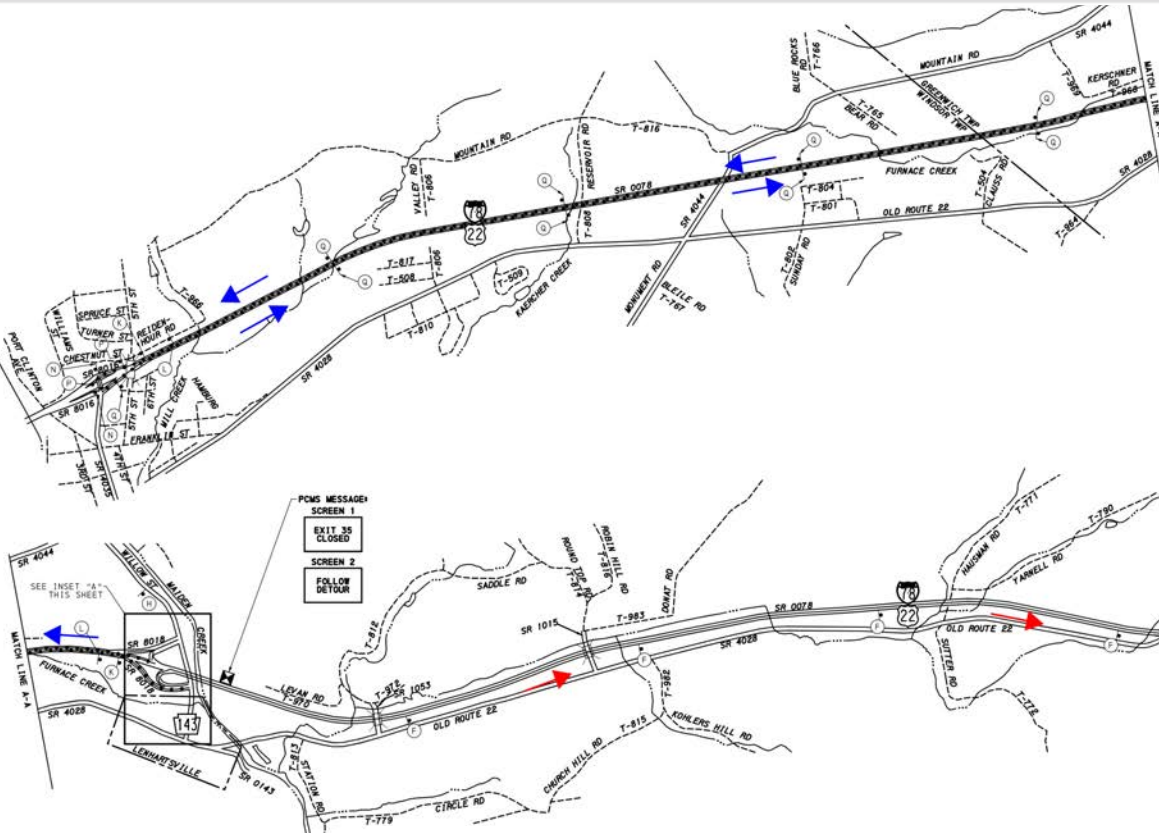
• I-78 EB to SR 0143 Detour (10.0 Miles)

- I-78 EB
- Exit 40 (Krumsville)
- I-78 WB
- Exit 35 (Lenhartsville)
- Detour Duration: One (1) 21-day calendar period

• SR 0143 to I-78 EB Detour (5.4 Miles)

- I-78 WB
- Exit 30 (Hamburg)
- I-78 EB
- Detour Duration: One (1) 21-day calendar period

I-78/SR 0143 Northern Ramps (Ramps C and D) Detour – Stage 2N



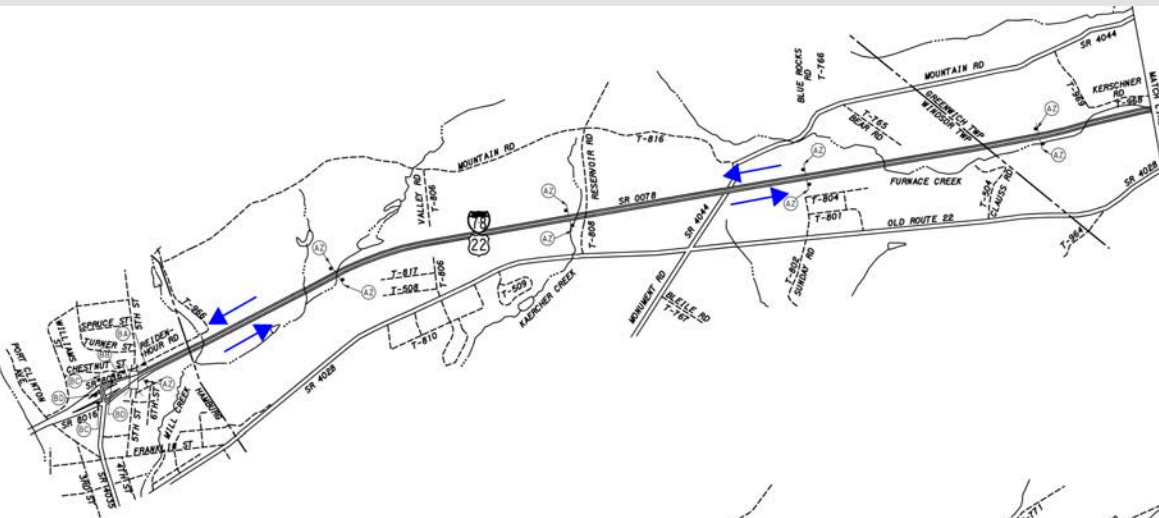
• I-78 WB to SR 0143 Detour (10.4 Miles)

- I-78 WB
- Exit 30 (Hamburg)
- I-78 EB
- Exit 35 (Lenhartsville)
- Detour Duration: One (1) 21-day calendar period

• SR 0143 to I-78 WB Detour (5.4 Miles)

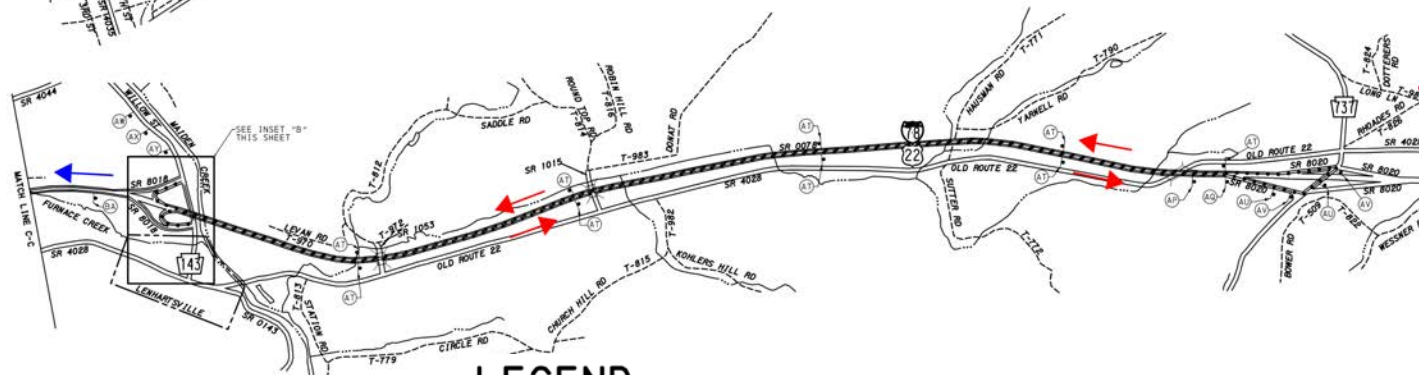
- I-78 EB
- Exit 40 (Krumsville)
- I-78 WB
- Detour Duration: One (1) 21-day calendar period

SR 0143 Short-Term Detour – Stage 2 and 3



• SR 0143 NB Detour (10.1 Miles)



- I-78 WB
- Exit 30 (Hamburg)
- I-78 EB
- Exit 35 (Lenhartsville)
- Detour Duration: Intermittent during off-peak hours



SR 0143 SB Detour (10.5 Miles)

- I-78 EB
- Exit 40 (Krumsville)
- I-78 WB
- Exit 35 (Lenhartsville)
- Detour Duration: Intermittent during off-peak hours

LEGEND

- SR 0143 NB DETOUR (10.1 MILES) 
- SR 0143 SB DETOUR (10.5 MILES) 
- PROJECT AREA / ROAD CLOSURE
- == STATE ROAD
- - - MUNICIPAL ROAD
- - - MUNICIPAL BOUNDARY
- ... STREAM
- (A) SIGN, SIGN ID



Upcoming Construction Schedule & Activities

H&K

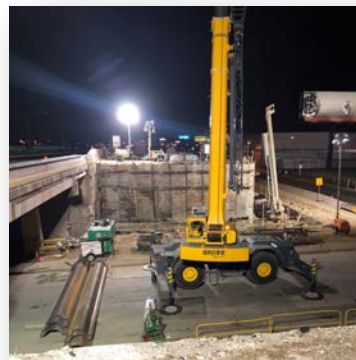
Introduction to H&K Group, Inc.

H&K Group, Inc. (H&K) began as a small family business over a half century ago. Today, H&K is a dynamic group of vertically integrated companies providing complete heavy civil contracting and construction materials solutions with safety, speed, quality, efficiency, and value.

Here at H&K, we live and work by a value system that places accountability, safety, quality and integrity above all other business practices and principles.

Find out **MORE** at

www.hkgroup.com



Strength | Experience | Value

Introduction to H&K Group, Inc.

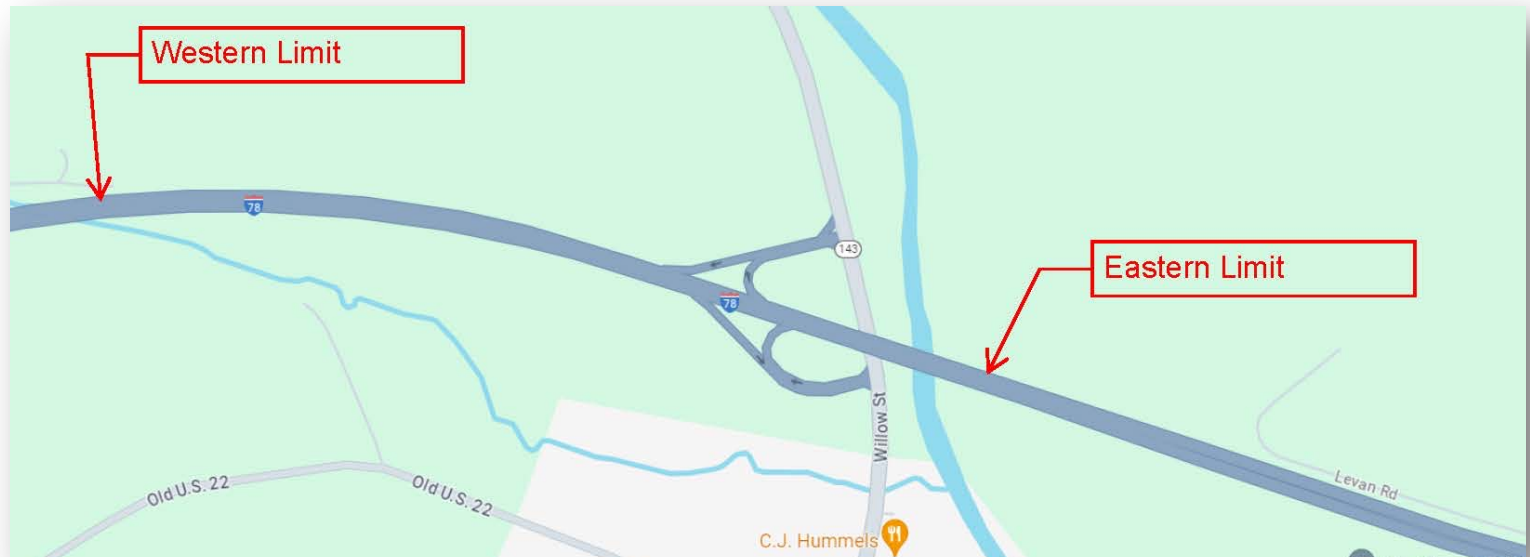
- 11 Contracting Companies
- 22 Stone Quarries
- 19 Asphalt Plants
- 7 Concrete Plants
- 2 Precast Concrete Plants
- 3 CMU Block Plants
- Workforce of 2,000 People with more than 1,800 PA Residents

**H&K's
Operational
Footprint**



Scope of Work - H&K Group, Inc.

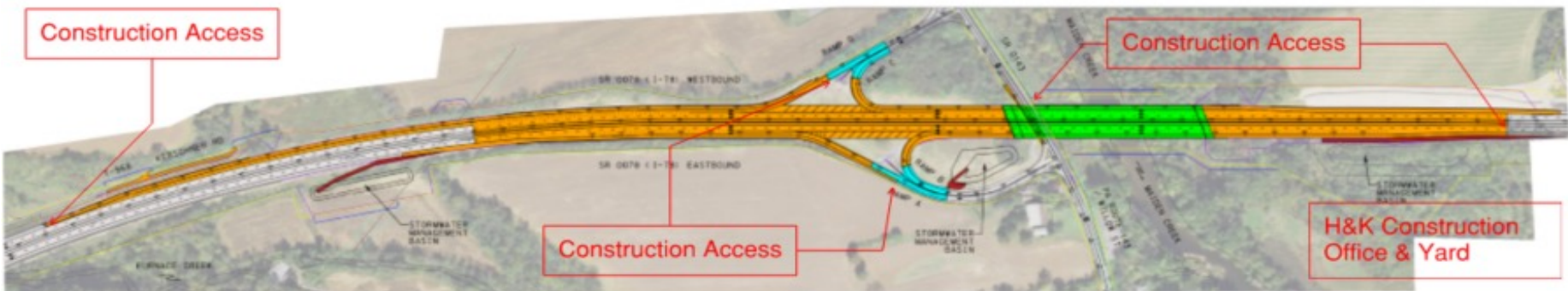
- Total reconstruction of I-78 Bridge over Maiden Creek and RT 143 and approximately one (1) mile of I-78 and portion of on/off Ramps at Lenhartsville, PA.
- This is currently intended to be reconstructed in five (5) Stages, anticipated starting construction in Summer 2024 and lasting into Summer of 2028.



Scope of Work - H&K Group, Inc. (Cont.)

Anticipated Traffic Changes:

- Access to and from the Project will be from both Rt 143 and I-78.
- Lane Closures on I-78 will be intermittent as required to construct Project, during off-peak hours to limit public disturbance.
- Detours on Ramp anticipated for Summer/Fall 2025.
- Traffic Stoppages will be required for small timeframes during demolition of the existing, and construction of the new structure.



H&K Scope of Work-By the Numbers

- **125,000 CY of Excavation**
- **8,500 CY of Structural Concrete & 26,000 CY of Roadway Concrete**
- **7,000 LF of Various Size Drainage Pipe & 90 EA Various Size Drainage Structures**
- **1,920,000 LB of Reinforcing Steel**
- **55,000 SF of Support Excavation**
- **7,200 LF of New Concrete Barrier & 9,000 LF of Temporary Concrete Barrier**



I-78 Lenhartsville Subcontracting & Supplier Opportunities

Anticipated list of potential Subcontracting & Supplier Opportunities:

- Concrete Paving Accessories
- Concrete Pumping
- E&S Protection & Landscaping
- Electrical
- Guiderail & ROW Fencing
- Maintenance/Protection of Traffic
- Pipe Testing
- PPC Overlay
- Precast Drainage Structures & Reinforced Concrete Pipe
- Protective Coatings/Sealers
- Reinforced Concrete Pipe
- Rebar Furnish & Install
- Trucking

- * All potential Subcontractors need to be current PA Business Partners
- * All materials to be Bulletin 15 Approved





Get Involved: DBE & Workforce Opportunities
MTI

Our DBE & Workforce Development Team

BPD-I & BPC's local team works as a liaison with PennDOT



Alex Cann
BPD-I EEO
Manager (MTI)



Michelle Murdock
BPC DBE Program
Manager

BPD-I/BPC Diversity & Inclusion Team

- Compliance & Oversight of DBE/ SBE, On-the-Job Training (OJT), Diversity & Inclusion programs
- Outreach coordinator, small business and workforce diversity advocate



Q&A and How to Stay Informed

Next Steps & Contacts Info

BPD-I Public Information Office

PIC Hotline: (717) 500-6088

PublicInformationOffice@PennBridges.com

BPD-I Public Information Manager

Carla Julian

Carla@moderntimesinc.com

**BPD-I Equal Employment Opportunity
Manager**

Alex Cann

Alexandra@moderntimesinc.com

**Thank you for joining us today, please utilize
this time for any unanswered QUESTIONS or
comments you may have for the team.**

**District 5 I-78 Lenhartsville Bridge
PennDOT**

**Community Relations Coordinator
i78Lenhartsville@pa.gov**

For Project updates visit:

www.penndot.pa.gov/i78Lenhartsville

For Contracting Opportunities visit:

BridgingPennsylvaniaDevelopers1.com



THANK YOU FOR ATTENDING!

