

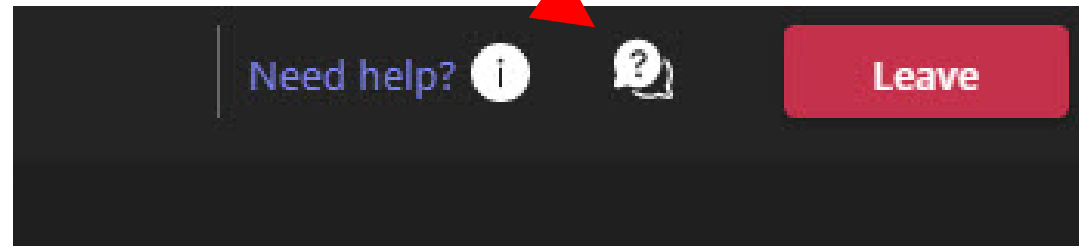
ART SCHOOL ROAD BRIDGES REPLACEMENT PROJECT



QIONG LIU– DECEMBER 2023

QUESTIONS?

Questions can be submitted by clicking on the Q&A feature located at the top of your screen



Please note the slide number in your question



MEETING AGENDA

Project Location

Project Description

Project Purpose and Need

Environmental Resources

Project Improvements

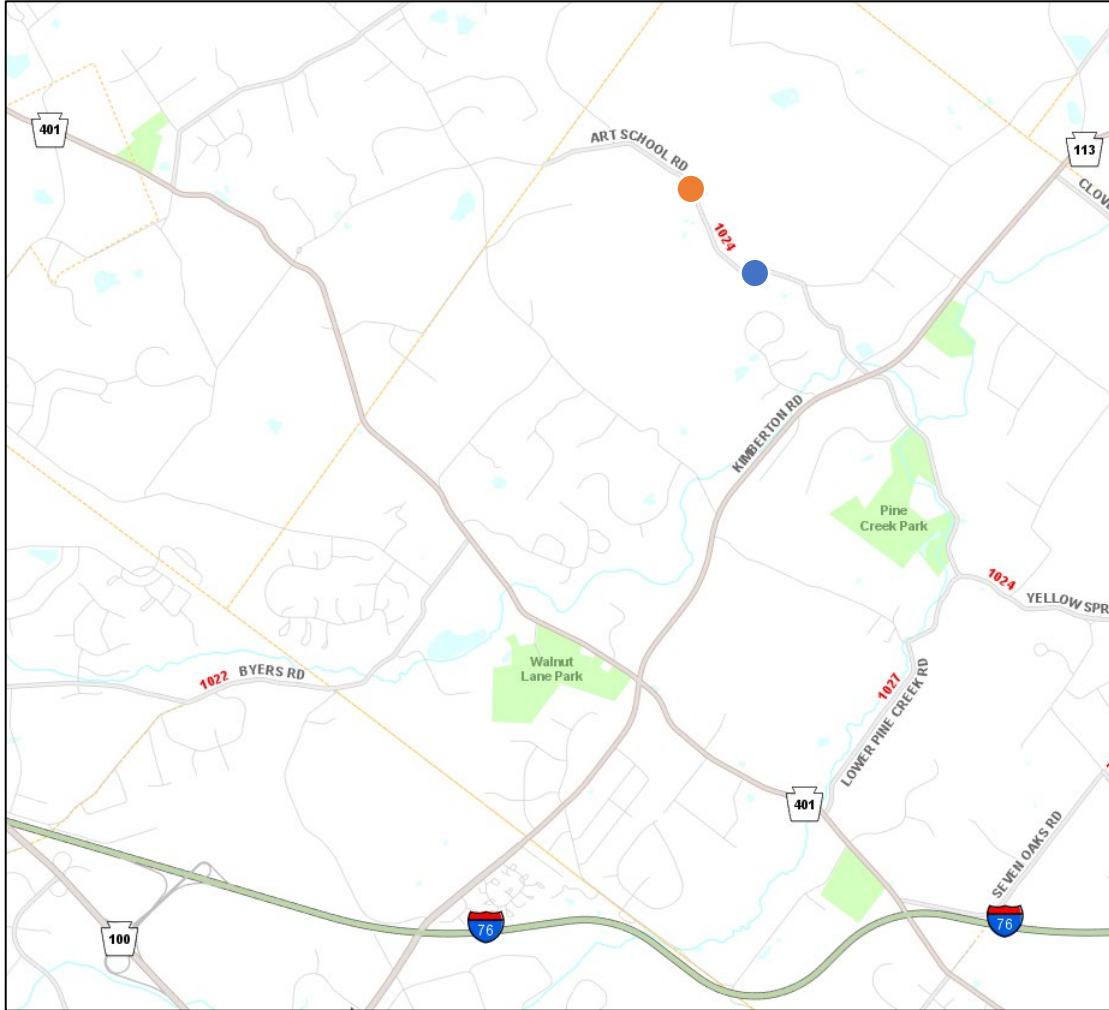
Traffic Control

Next Steps

Questions



PROJECT LOCATION



PROJECT DESCRIPTION

Art School Road bridge replacement over Branch of Pickering Creek



Existing Bridge #1:

- Concrete Encased Steel I-Beam
- 22 feet long, two lanes with no shoulder
- Built in 1920

PROJECT DESCRIPTION

Art School Road bridge replacement over Branch of Pickering Creek



Existing Bridge #2:

- Concrete Encased Steel I-Beam
- 30 feet long, two lanes with no shoulder
- Built in 1920

PROJECT PURPOSE



The purpose of this project is to provide a structure that is capable of efficiently and safely handling the existing and expected traffic on Art School Road while maintaining an approved hydraulic opening for Pickering Creek.



PROJECT NEEDS

The most recent inspection report detailed the deteriorated condition of the structure as listed below:

- Superstructure
- Bridge deck
- Substructure



Bridge #1



Bridge #2



ENVIRONMENTAL RESOURCES



1809 Art School Road

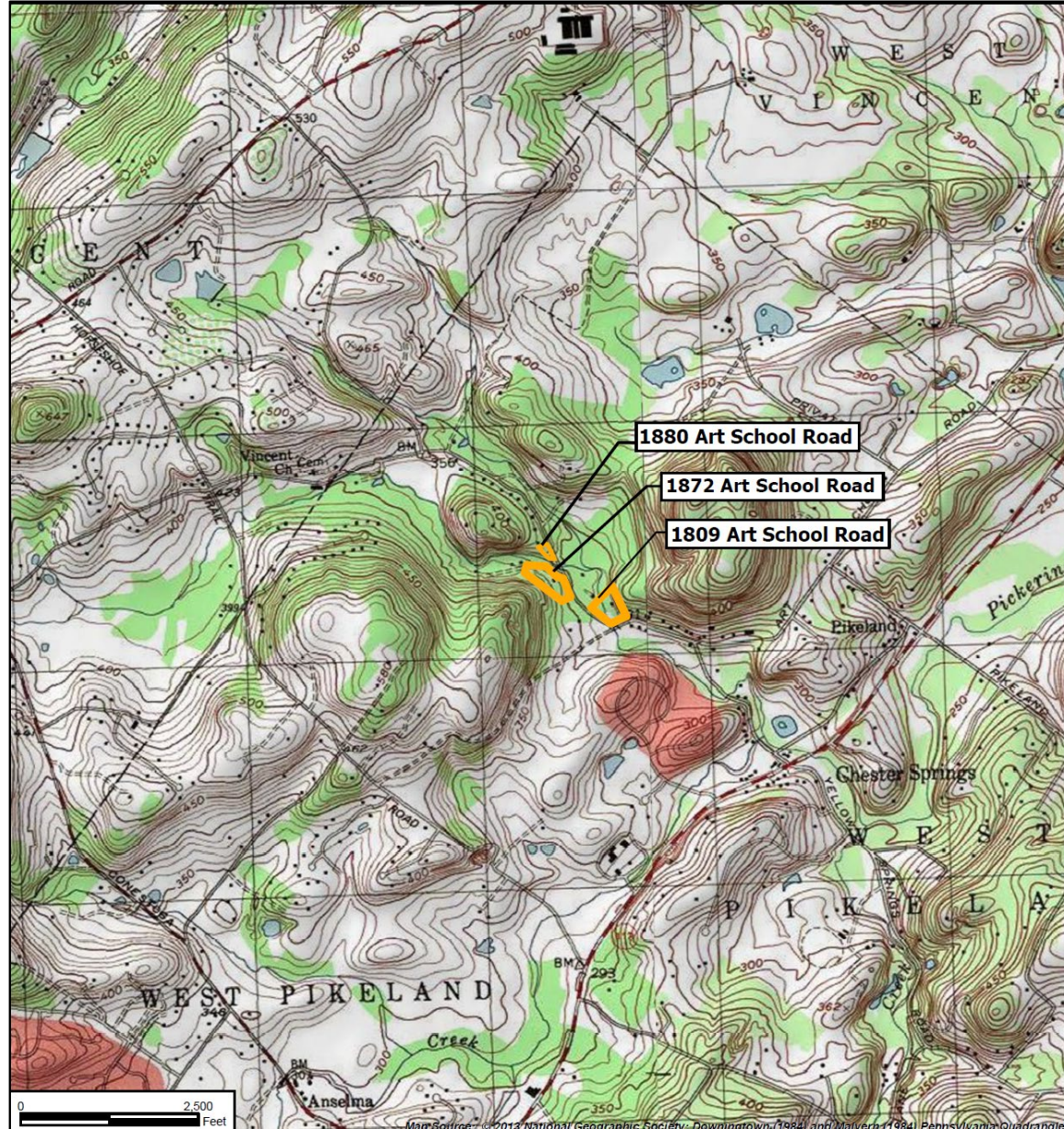
1872 Art School Road



1880 Art School Road



ENVIRONMENTAL RESOURCES



ENVIRONMENTAL RESOURCES

Neither of the existing bridges are considered eligible for the National Register.



Bridge #1



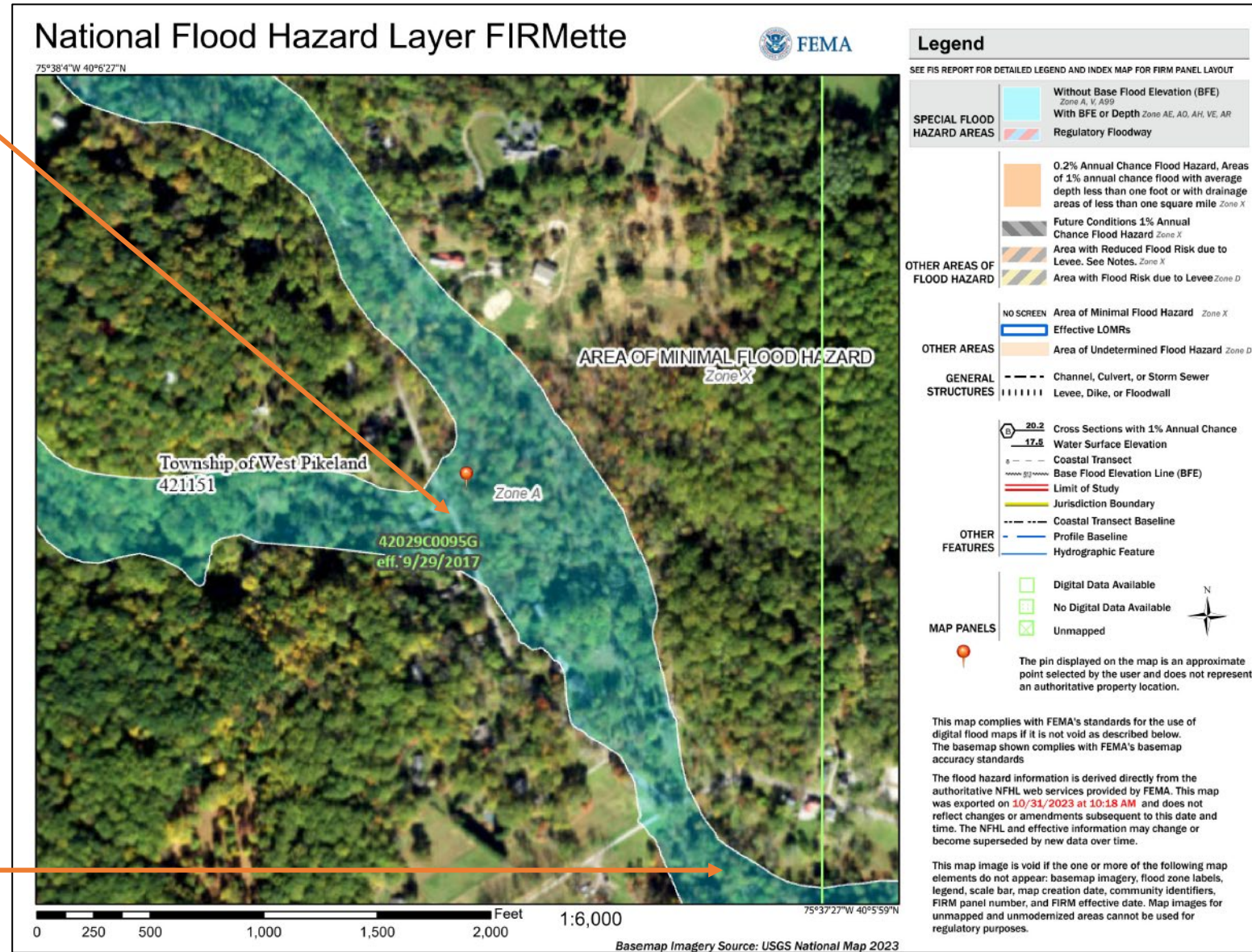
Bridge #2

ENVIRONMENTAL RESOURCES

Both project bridges are within FEMA Regulatory Floodplain Zone A.

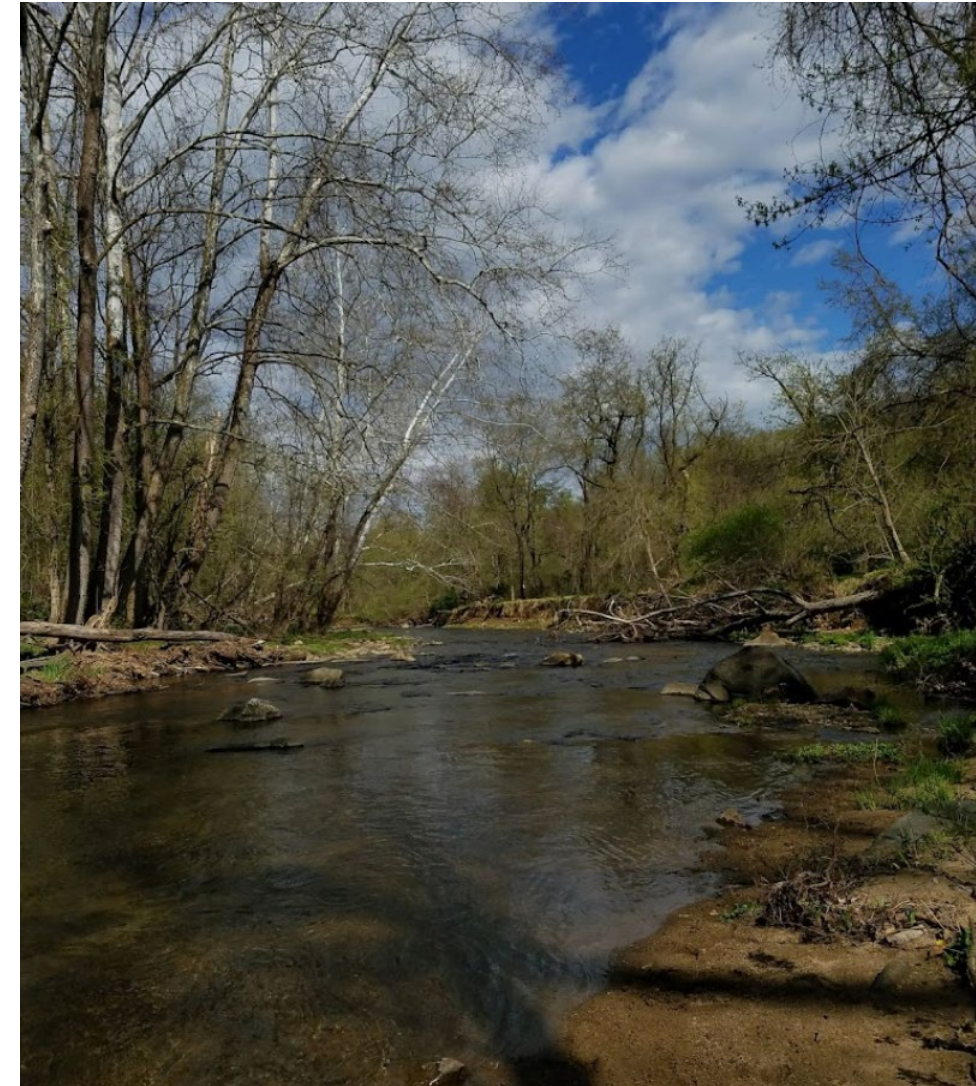
Bridge #1

Bridge #2



ENVIRONMENTAL RESOURCES

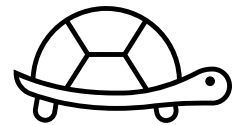
- Pennsylvania Code, Water Quality Regulations
 - Branch of Pickering Creek = High-Quality Trout Stocked Fishery and Migratory Fishery
- Pennsylvania Fish and Boat Commission
 - The Branch of Pickering Creek is not classified as an Approved Trout Water, Naturally Reproducing Trout Stream, or a Class A Wild Trout Stream.
 - As a result, no in-stream construction restrictions will be required.



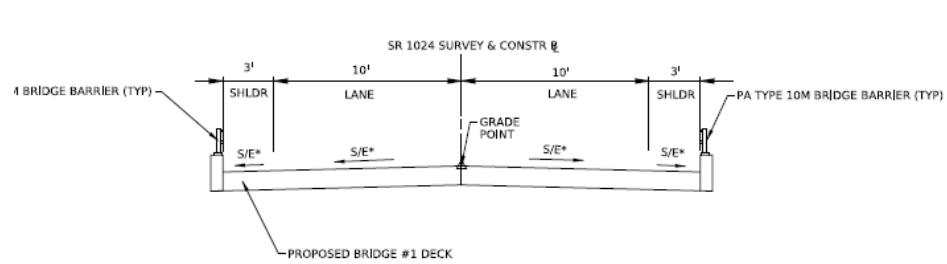
ENVIRONMENTAL RESOURCES

- Bridge #1
 - Wetlands were not identified within the immediate footprint of the project.
 - Phase I Bog Turtle Survey found that Wetland 1 met the criteria for Bog Turtle habitat, thus resulted in a request for the Bog Turtle Programmatic along with applicable Avoidance and Minimization Measures or a Phase 2 Bog Turtle Survey.

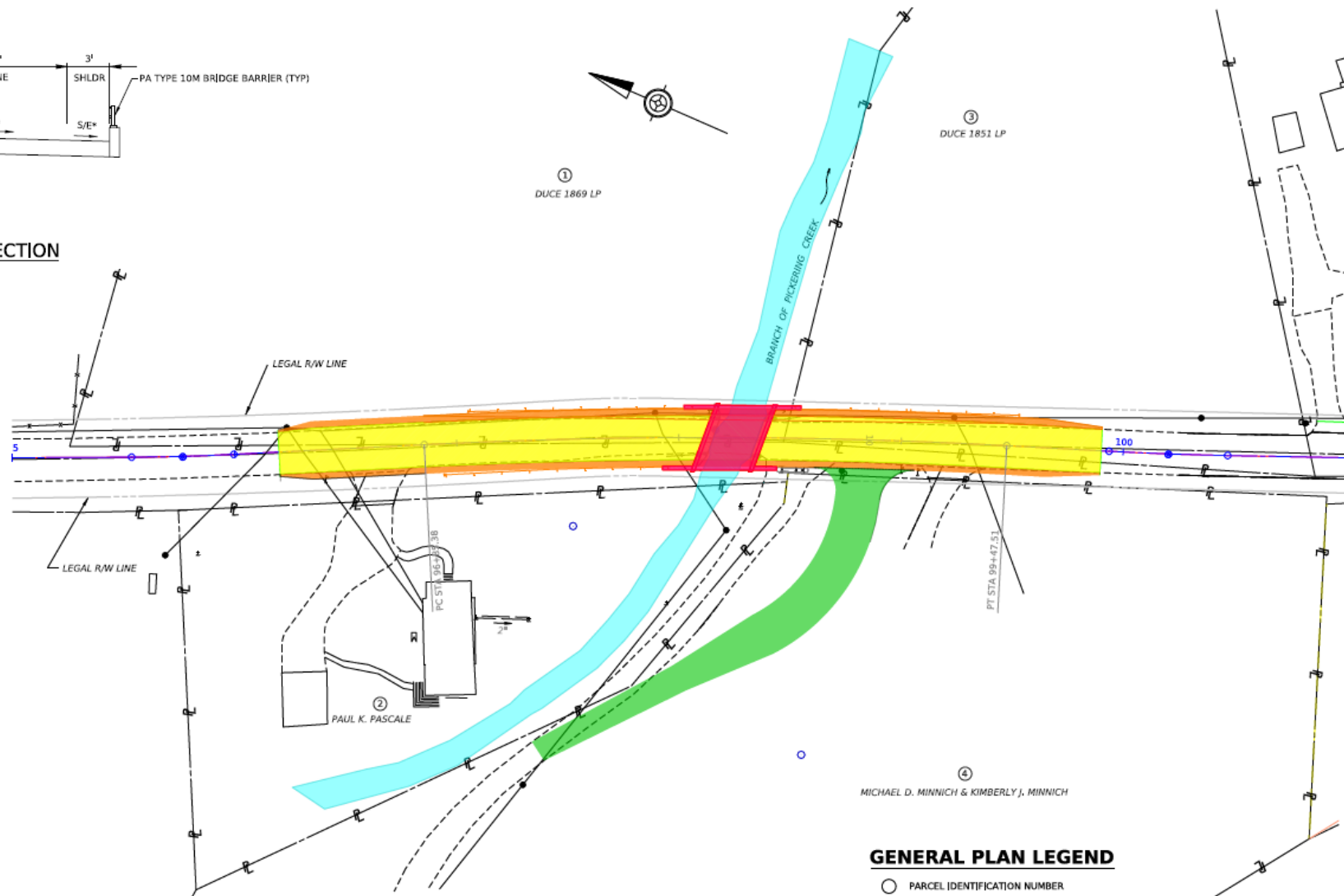
- Bridge #2
 - Wetlands were identified.
 - However, no wetlands within 300 feet of the project met the criteria as potential bog turtle habitat, which was agreed upon by the USFWS.



BRIDGE #1 IMPROVEMENTS

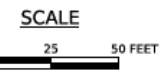


TYPICAL BRIDGE SECTION

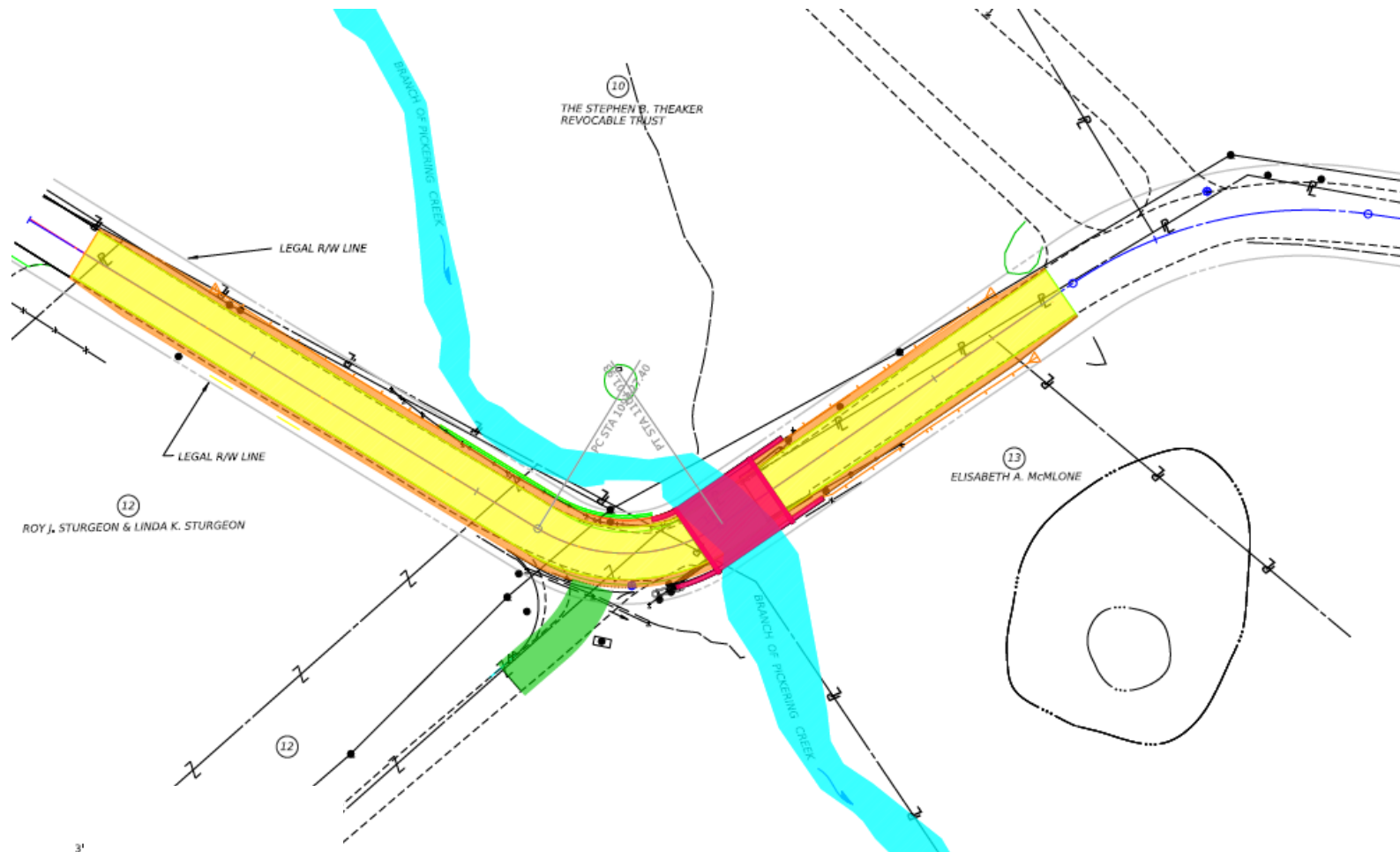
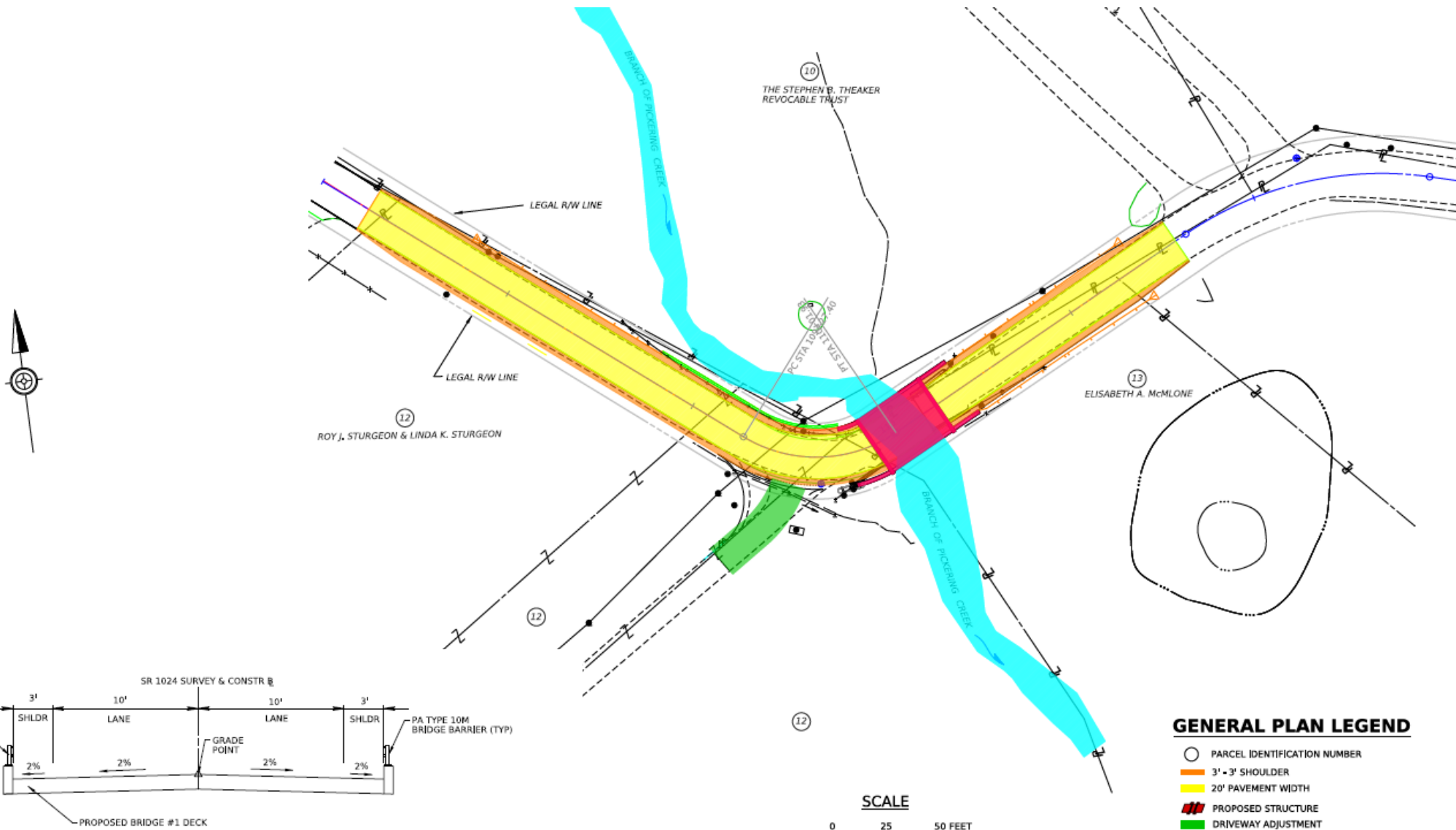


GENERAL PLAN LEGEND

- PARCEL IDENTIFICATION NUMBER
- 3' - 3' SHOULDER
- 20' PAVEMENT WIDTH
- ▨ PROPOSED STRUCTURE
- DRIVEWAY ADJUSTMENT



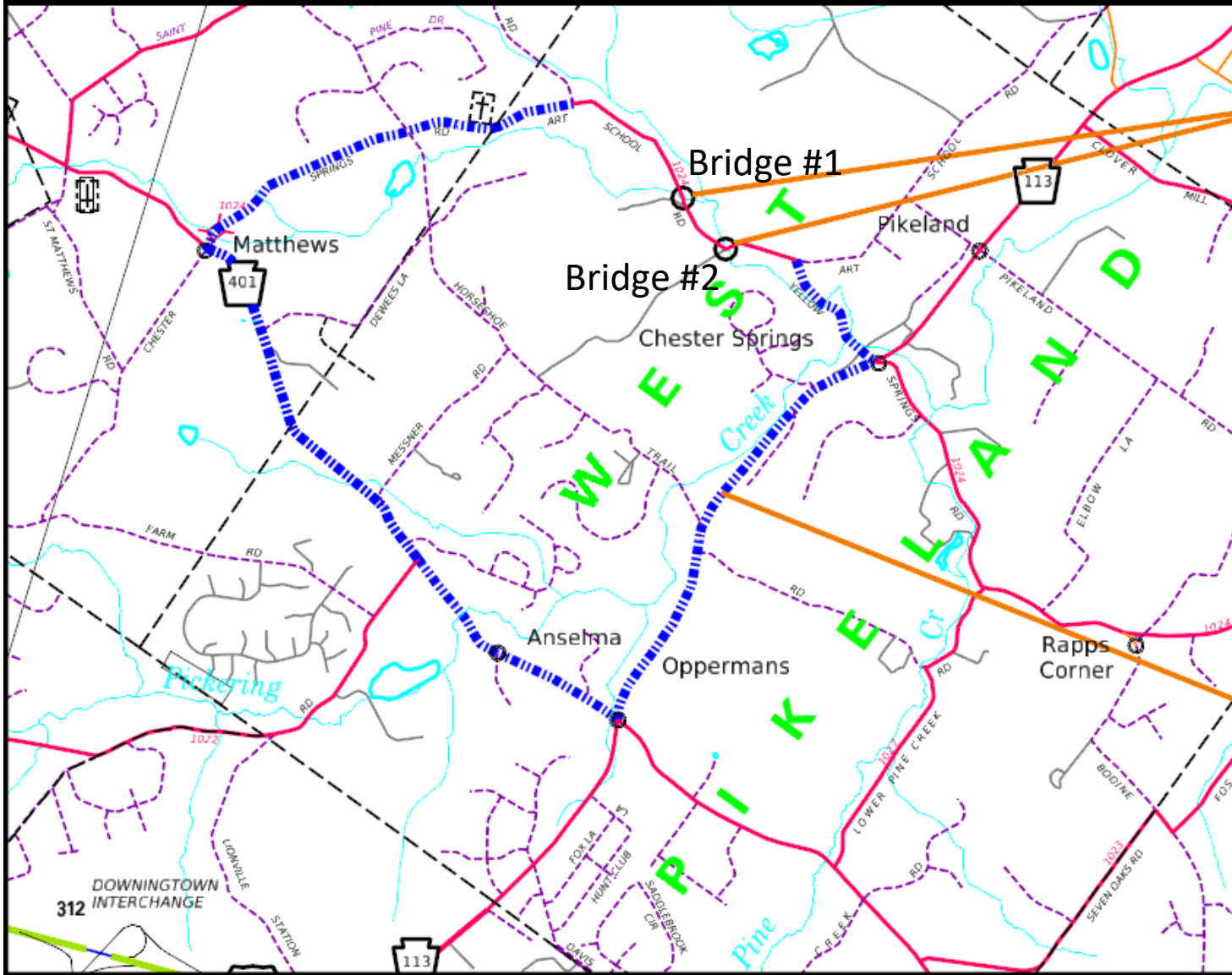
BRIDGE #2 IMPROVEMENTS



TYPICAL BRIDGE SECTION



TRAFFIC CONTROL



BRIDGE LOCATIONS

- Bridge #1 will be replaced first
- Bridge #2 will be replaced next

Local traffic access will be maintained at all times.

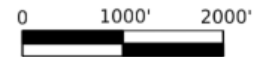
LEGEND

	STATE ROUTE		PROJECT LOCATION
	TOWNSHIP ROAD		TEMP SIGN TYPE 3 BARRICADE
	DETOUR ROUTE		TEMPORARY SIGNS

DETOUR ROUTE 3.6 MILES



SCALE



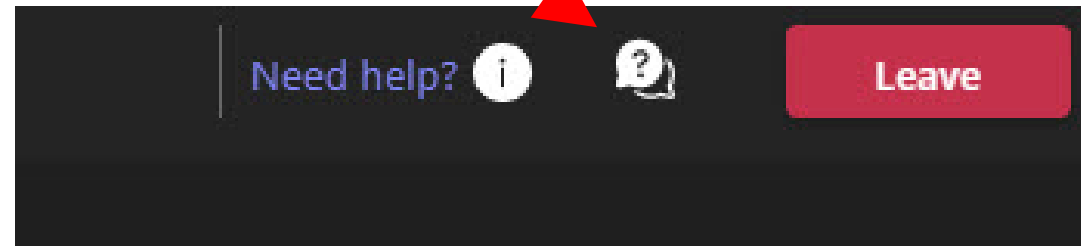
PROJECT SCHEDULE

Task	2024				2025				2026			
	Q1	Q2	Q3	Q4	Q1	Q2	Q3	Q4	Q1	Q2	Q3	Q4
NEPA Studies	■											
Geotechnical Studies	■	■	■									
ROW Acquisition		■	■	■								
Utility Conflict Resolution		■	■	■								
Section 404/105 Permitting		■	■	■								
Final Design		■	■	■								
Contracting					■							
Construction						■	■	■	■	■		



QUESTIONS?

Questions can be submitted by clicking on the Q&A feature located at the top of your screen



Please note the slide number in your question



THANK YOU FOR PARTICIPATING!

FOR MORE INFORMATION, VISIT THE PENNDOT DISTRICT 6 WEBSITE

WWW.PENNDOT.PA.GOV/REGIONALOFFICES/DISTRICT-6