



PENNSYLVANIA GAME COMMISSION

NORTHCENTRAL REGION

1566 SOUTH ROUTE 44 HIGHWAY JERSEY SHORE, PA 17740 | 1-833-742-4868 (PGC HUNT) 1-833-742-9453 (PGC WILD)

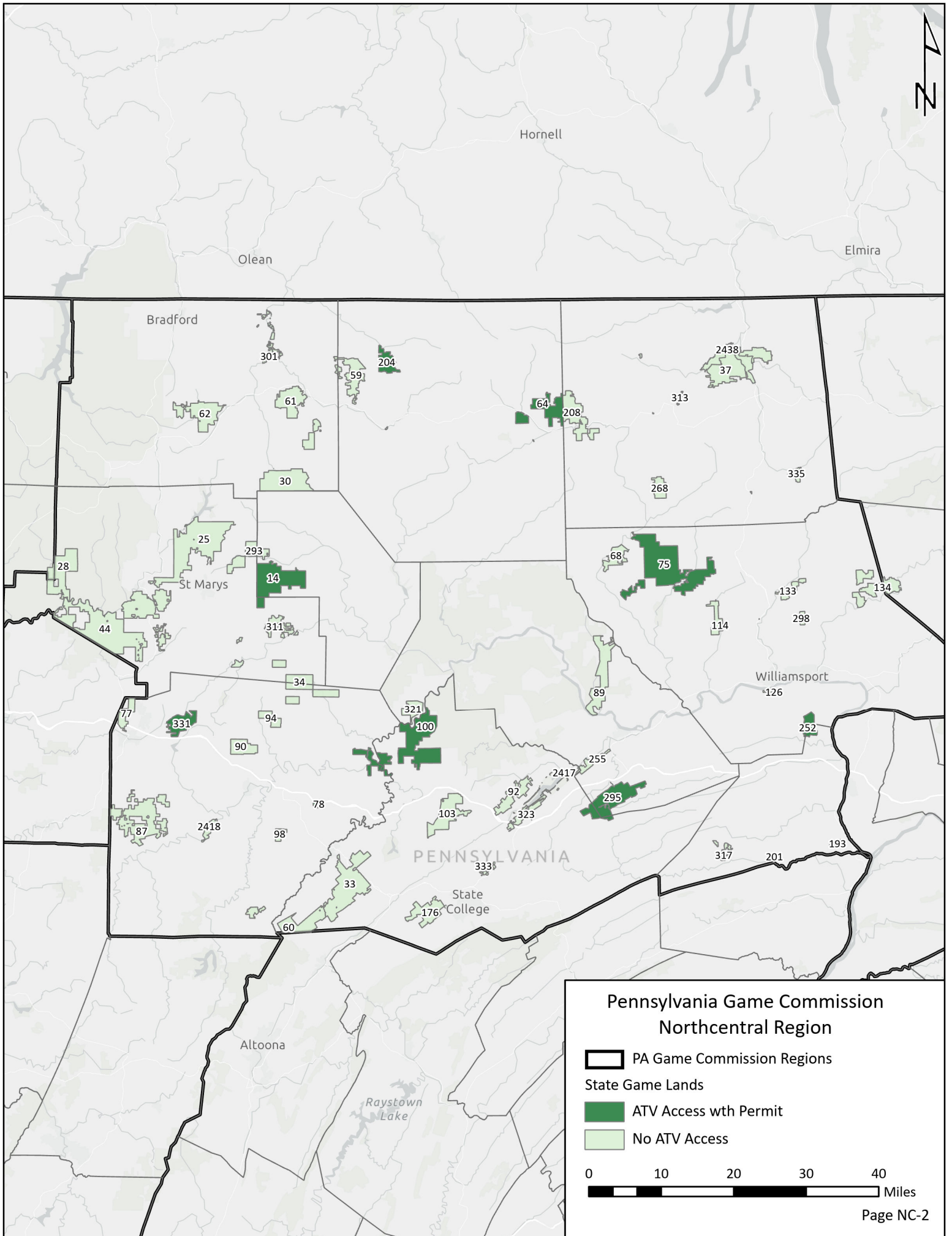
Northcentral Region

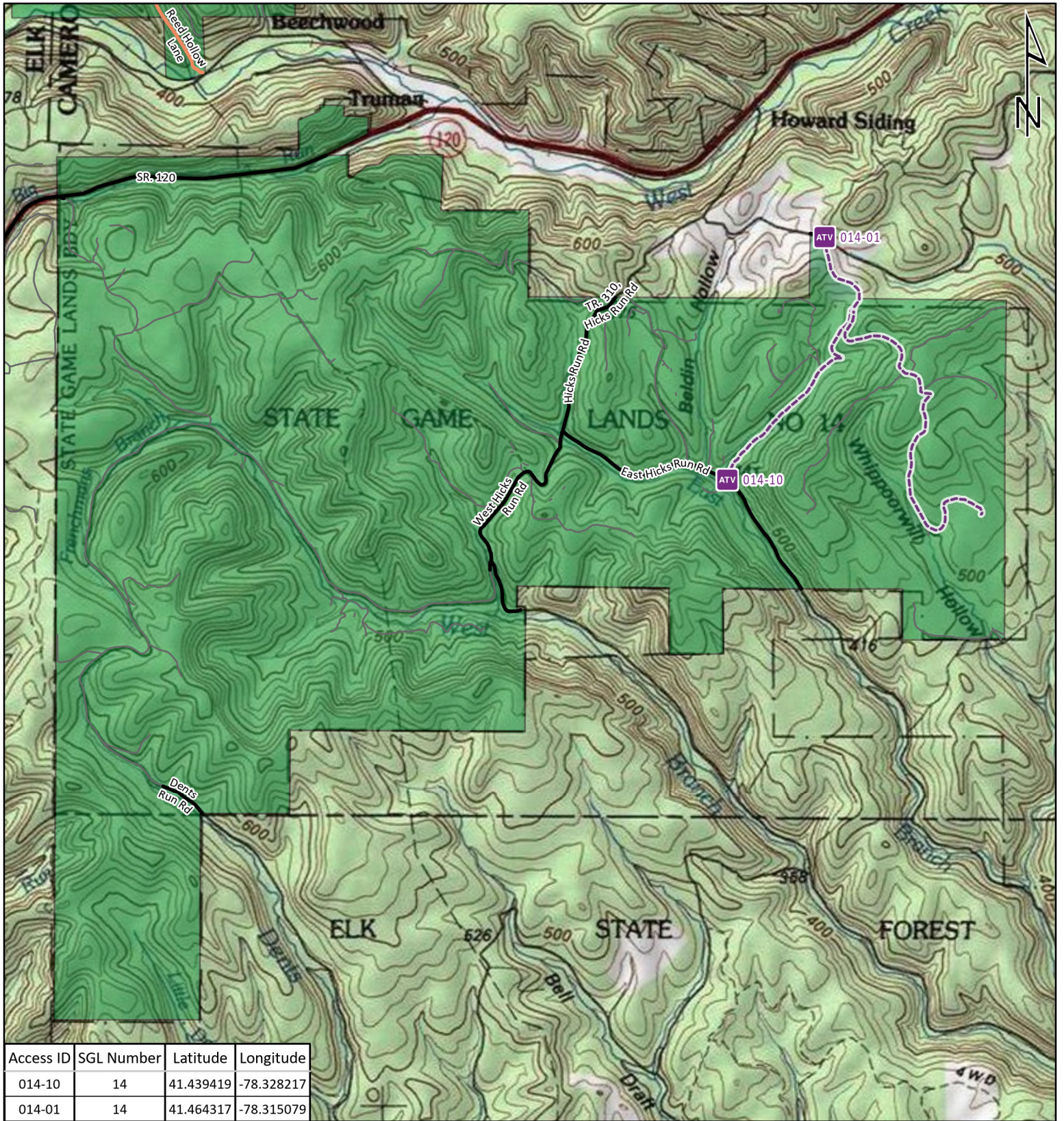


It is unlawful to ride ATVs on state game lands, except on designated roads open for persons issued a Disabled Persons Permit, and who have a valid registration from the Department of Conservation & Natural Resources.

Table of Contents

Northcentral Region Overview Map	NC-2
State Game Lands 14 Cameron and Elk counties	NC-3
State Game Lands 64 Potter and Tioga counties.....	NC-4
State Game Lands 75 Lycoming County	NC-5
State Game Lands 78 Clearfield County	NC-6
State Game Lands 100 Centre and Clearfield counties	NC-7
State Game Lands 204 Potter County	NC-8
State Game Lands 252 Lycoming and Union counties	NC-9
State Game Lands 295 Centre and Clinton counties	NC-10
State Game Lands 331 Clearfield County	NC-11

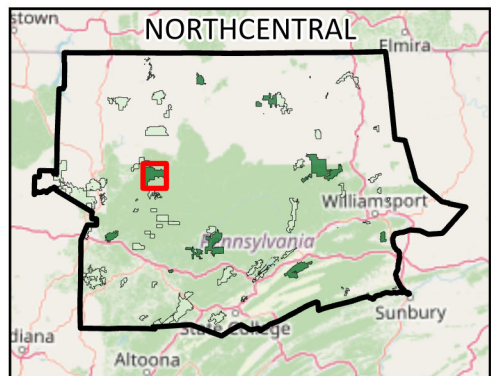




Access ID	SGL Number	Latitude	Longitude
014-10	14	41.439419	-78.328217
014-01	14	41.464317	-78.315079

-  Disabled Hunter Access Trail Start
-  State Game Land Boundary
- Game Land Roads**
-  Roads Open to Vehicle Traffic
-  Roads Seasonally Open to Vehicle Traffic
-  Roads Closed to Vehicle Traffic
-  ATV Access with Permit

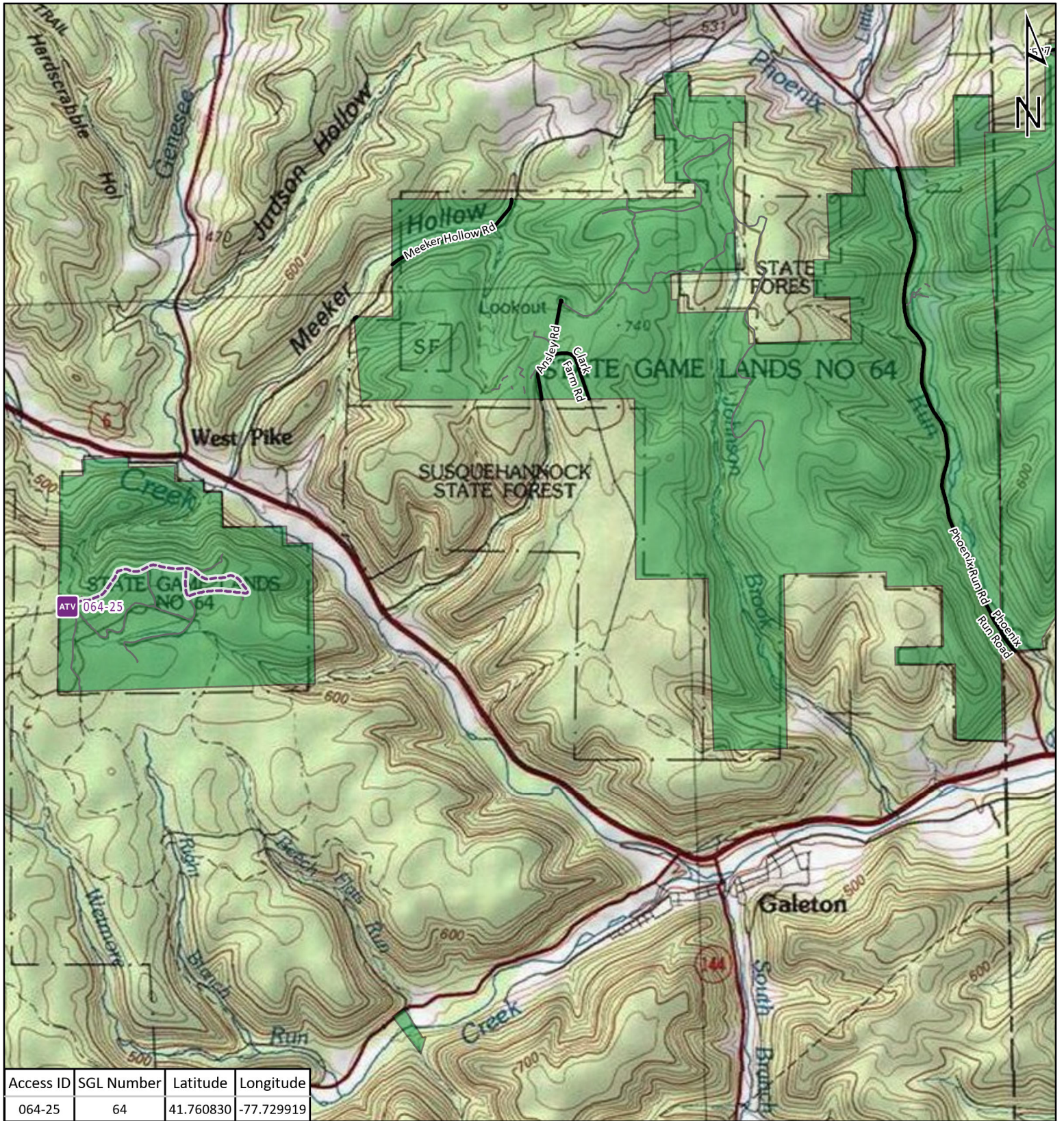
USA Topo Maps


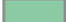



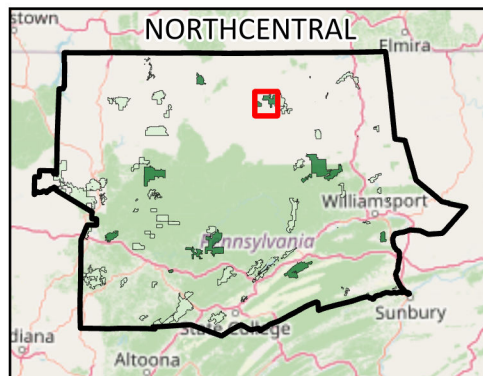
STATE GAME LAND 14



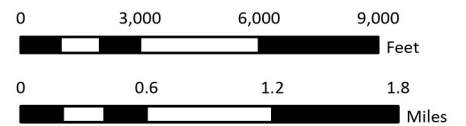
It is unlawful to ride ATV's on state game lands, except on designated roads open for persons issued a Disabled Person Permit, and who have a valid registration from the Department of Conservation & Natural Resources.



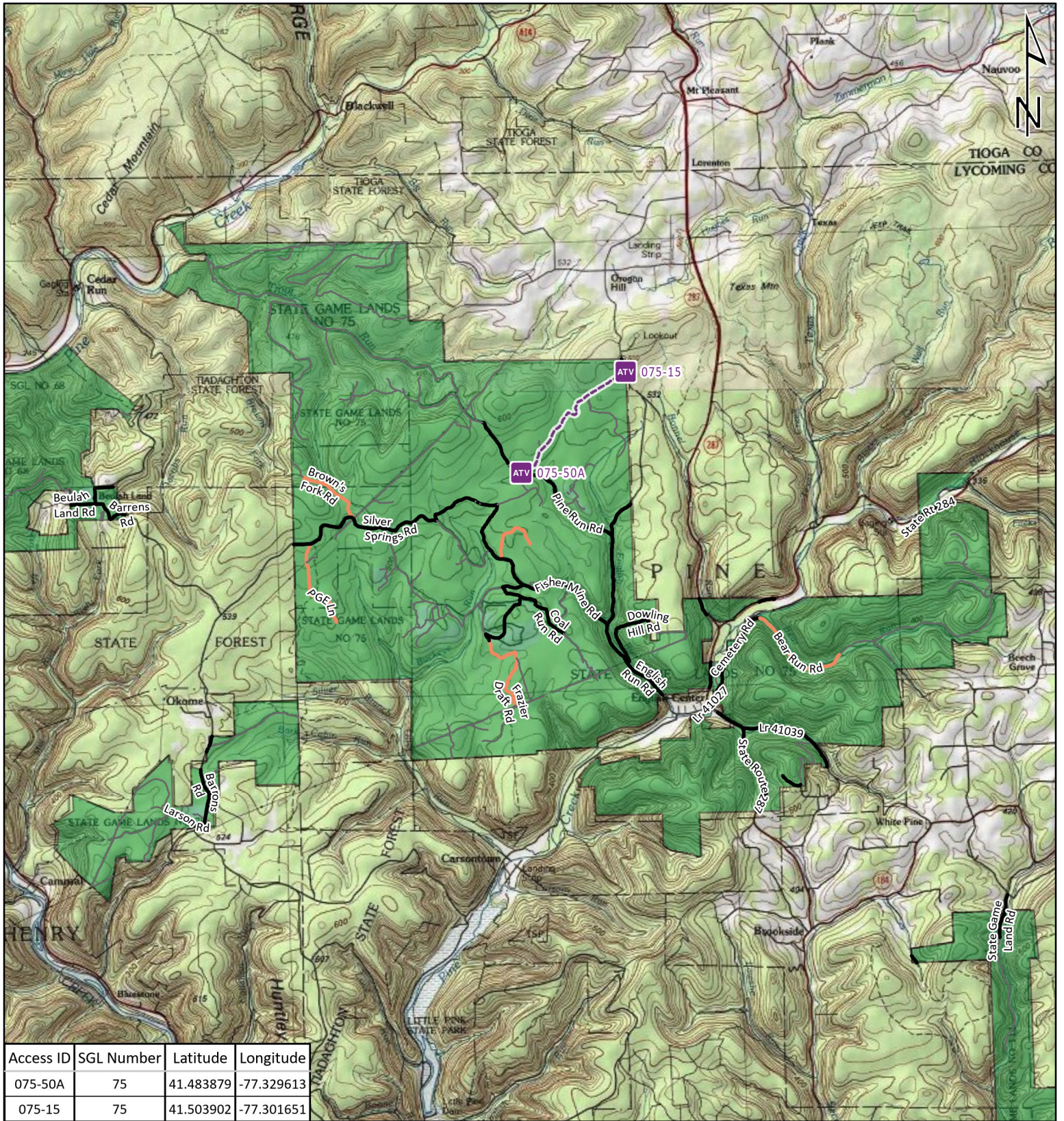
-  Disabled Hunter Access Trail Start
-  State Game Land Boundary
- Game Land Roads
-  Roads Open to Vehicle Traffic
-  Roads Seasonally Open to Vehicle Traffic
-  Roads Closed to Vehicle Traffic
-  ATV Access with Permit



STATE GAME LAND 64

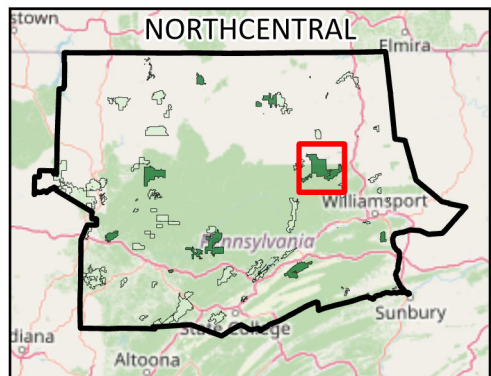


It is unlawful to ride ATV's on state game lands, except on designated roads open for persons issued a Disabled Person Permit, and who have a valid registration from the Department of Conservation & Natural Resources.



Access ID	SGL Number	Latitude	Longitude
075-50A	75	41.483879	-77.329613
075-15	75	41.503902	-77.301651

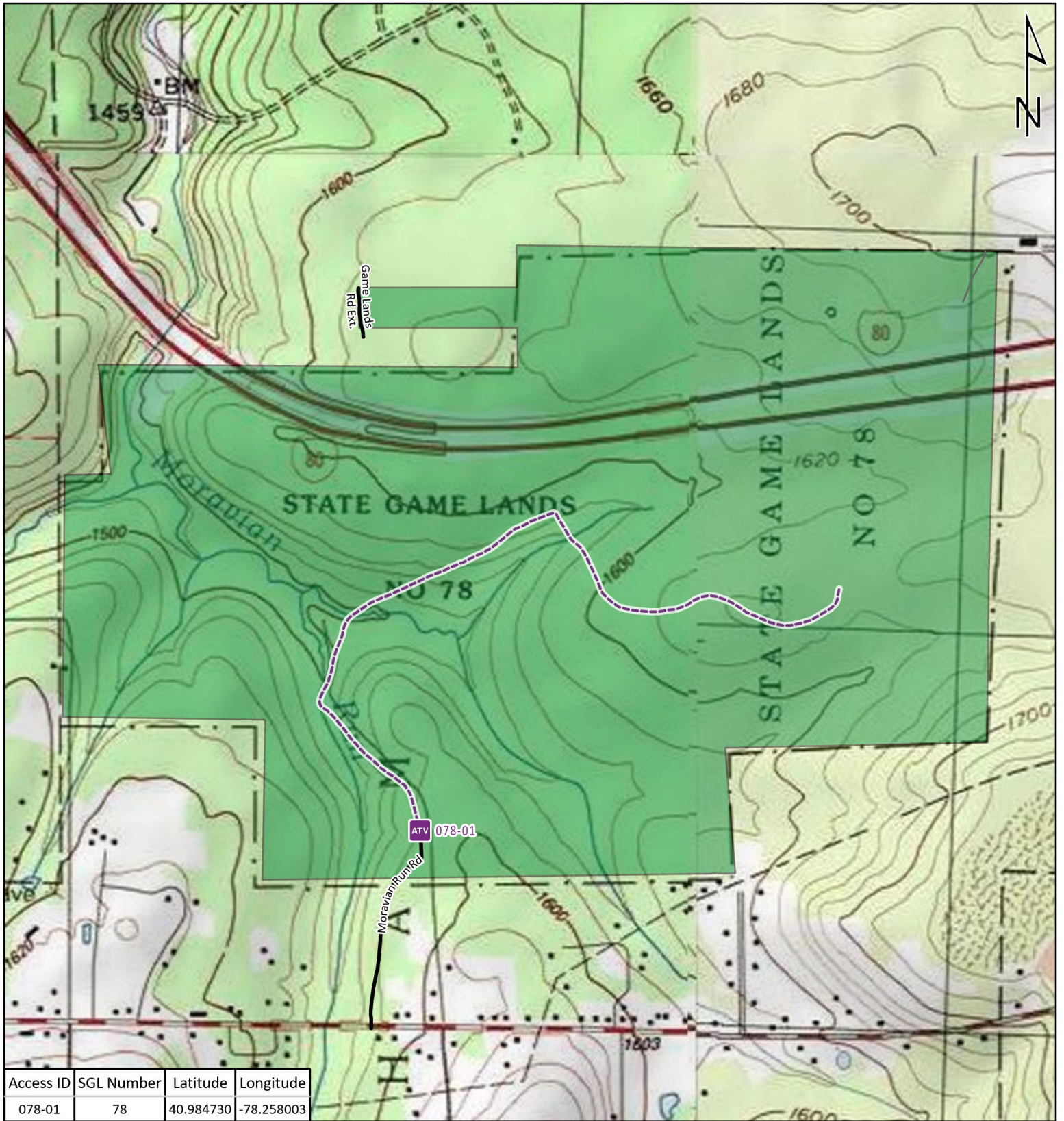
-  Disabled Hunter Access Trail Start
-  State Game Land Boundary
- Game Land Roads
 -  Roads Open to Vehicle Traffic
 -  Roads Seasonally Open to Vehicle Traffic
 -  Roads Closed to Vehicle Traffic
 -  ATV Access with Permit



STATE GAME LAND 75

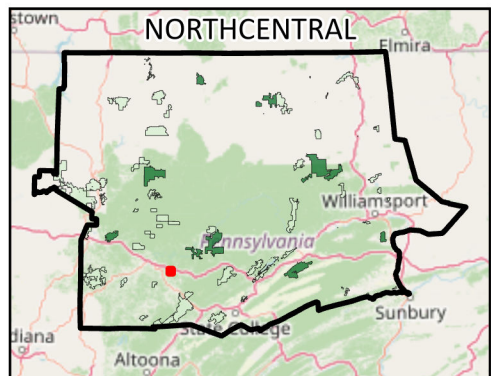


It is unlawful to ride ATV's on state game lands, except on designated roads open for persons issued a Disabled Person Permit, and who have a valid registration from the Department of Conservation & Natural Resources.

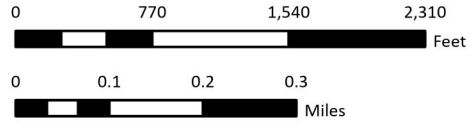


Access ID	SGL Number	Latitude	Longitude
078-01	78	40.984730	-78.258003

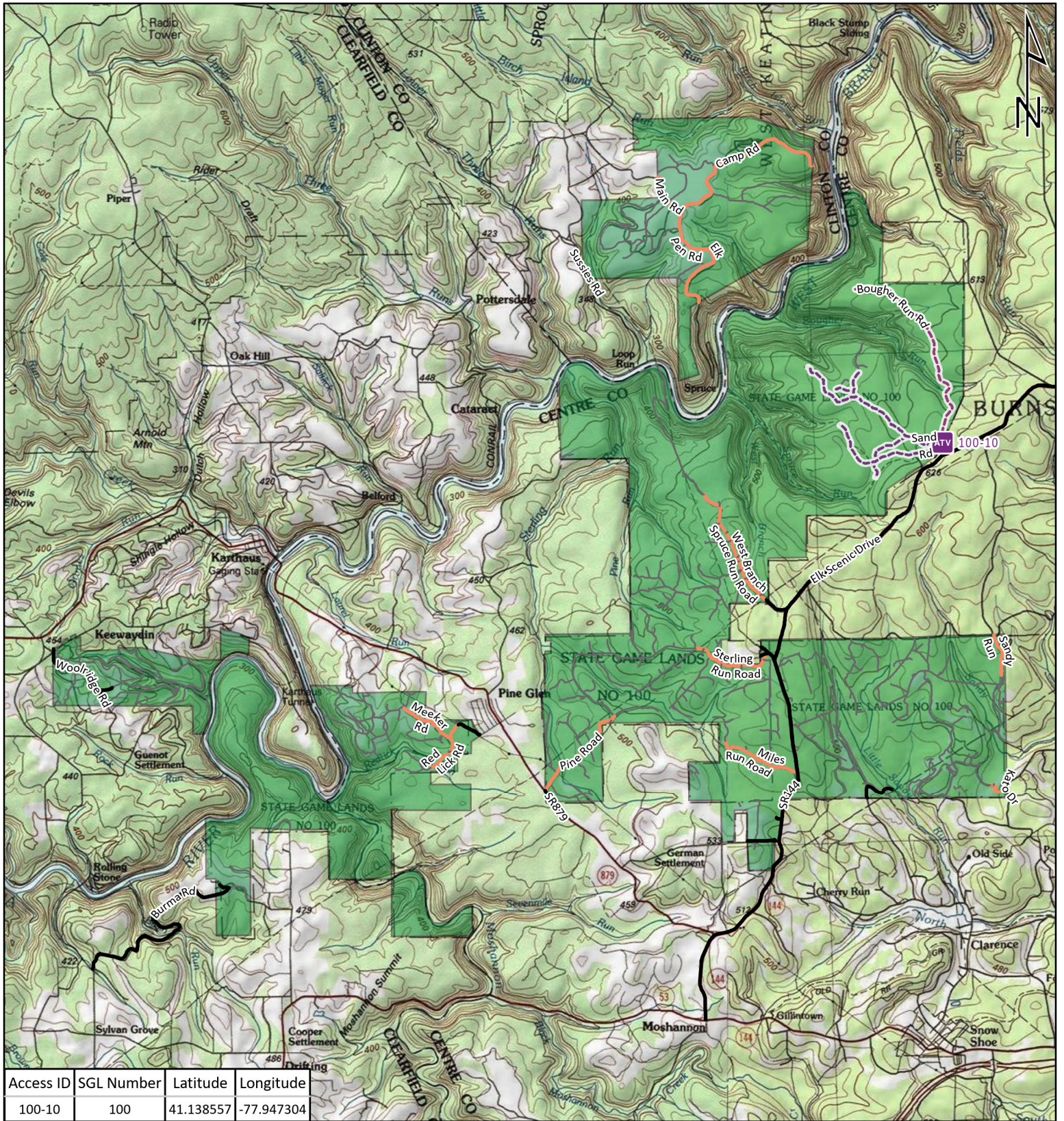
-  Disabled Hunter Access Trail Start
-  State Game Land Boundary
- Game Land Roads
 -  Roads Open to Vehicle Traffic
 -  Roads Seasonally Open to Vehicle Traffic
 -  Roads Closed to Vehicle Traffic
 -  ATV Access with Permit
- USA Topo Maps



STATE GAME LAND 78

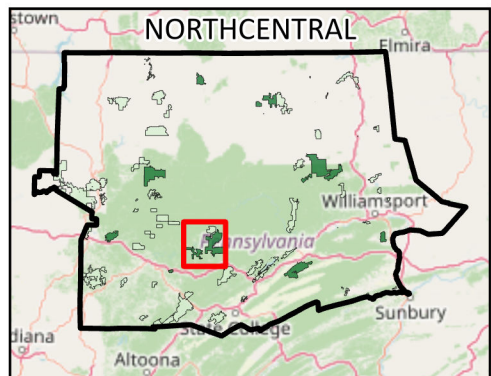


It is unlawful to ride ATV's on state game lands, except on designated roads open for persons issued a Disabled Person Permit, and who have a valid registration from the Department of Conservation & Natural Resources.

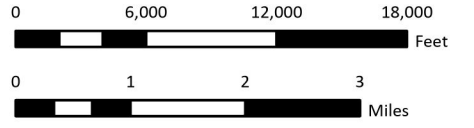


Access ID	SGL Number	Latitude	Longitude
100-10	100	41.138557	-77.947304

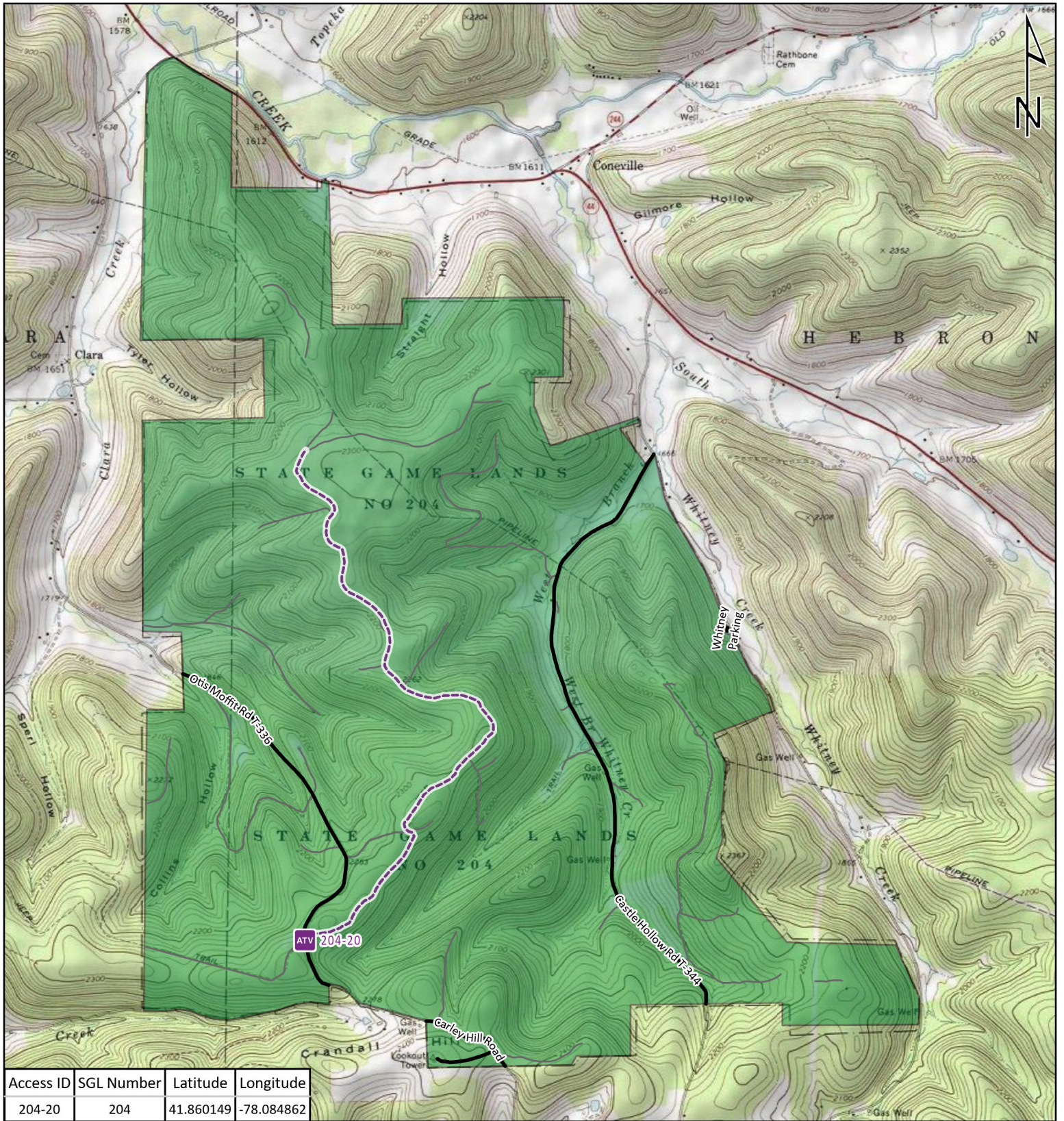
-  Disabled Hunter Access Trail Start
-  State Game Land Boundary
- Game Land Roads
 -  Roads Open to Vehicle Traffic
 -  Roads Seasonally Open to Vehicle Traffic
 -  Roads Closed to Vehicle Traffic
 -  ATV Access with Permit
- USA Topo Maps



STATE GAME LAND 100

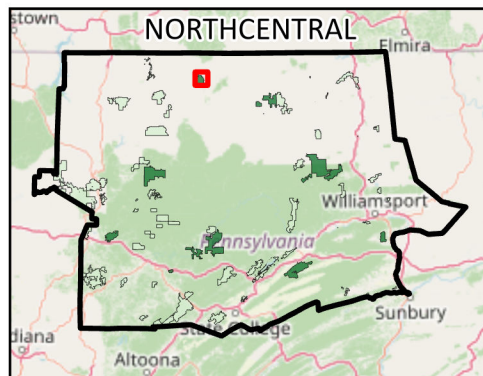


It is unlawful to ride ATV's on state game lands, except on designated roads open for persons issued a Disabled Person Permit, and who have a valid registration from the Department of Conservation & Natural Resources.



Access ID	SGL Number	Latitude	Longitude
204-20	204	41.860149	-78.084862

-  Disabled Hunter Access Trail Start
-  State Game Land Boundary
- Game Land Roads**
-  Roads Open to Vehicle Traffic
-  Roads Seasonally Open to Vehicle Traffic
-  Roads Closed to Vehicle Traffic
-  ATV Access with Permit



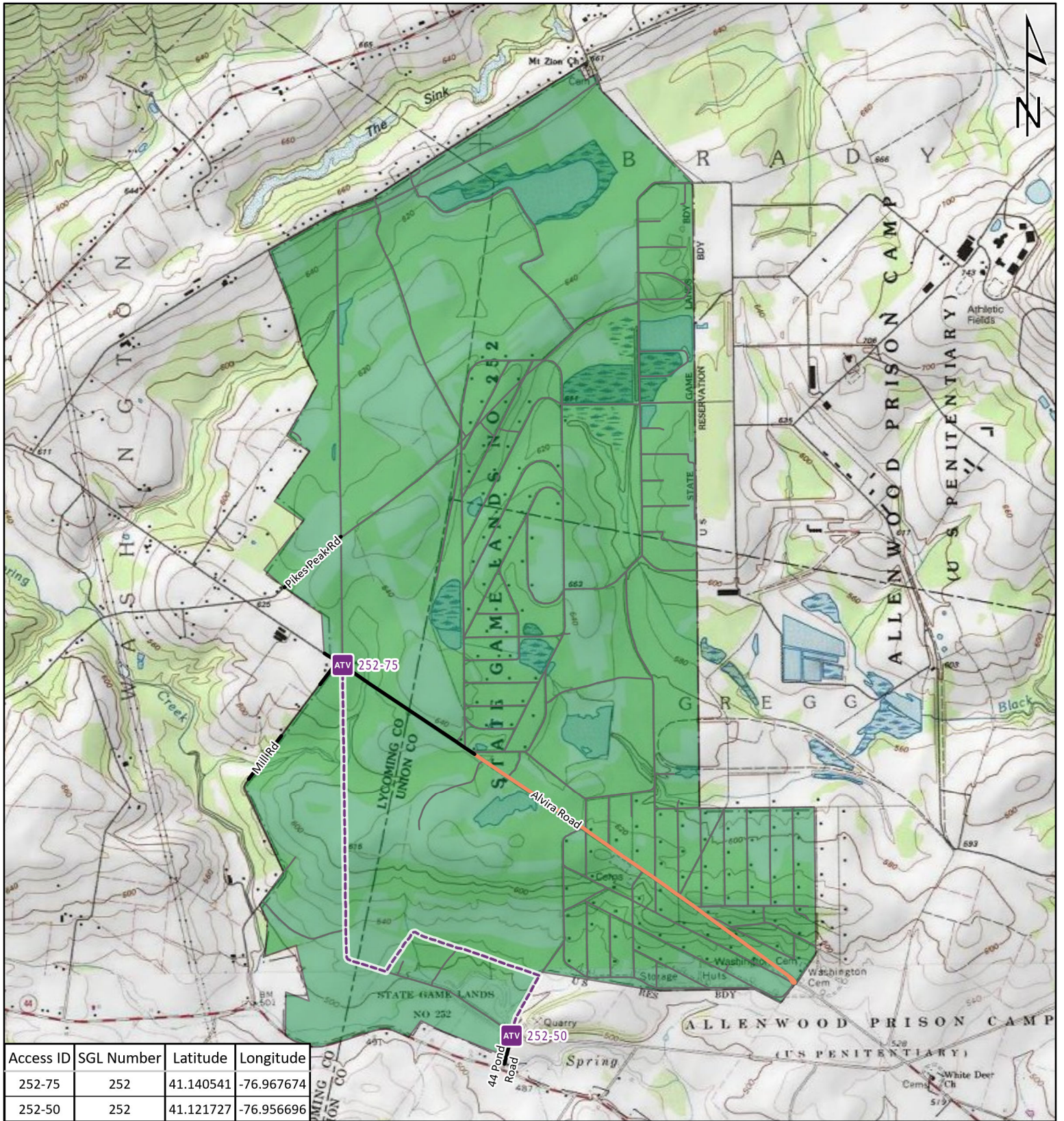
STATE GAME LAND 204



0 1,000 2,000 3,000
Feet

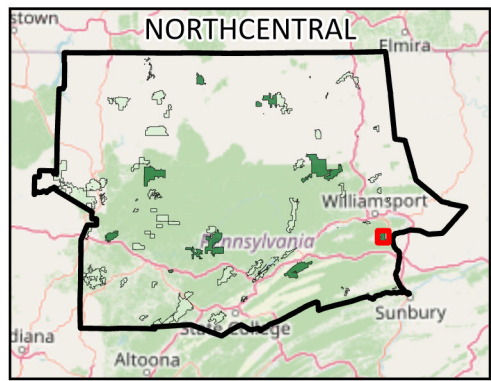
0 0.3 0.7 1
Miles

It is unlawful to ride ATV's on state game lands, except on designated roads open for persons issued a Disabled Person Permit, and who have a valid registration from the Department of Conservation & Natural Resources.

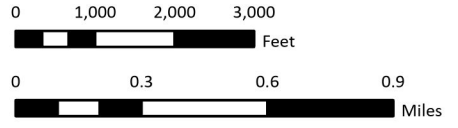


Access ID	SGL Number	Latitude	Longitude
252-75	252	41.140541	-76.967674
252-50	252	41.121727	-76.956696

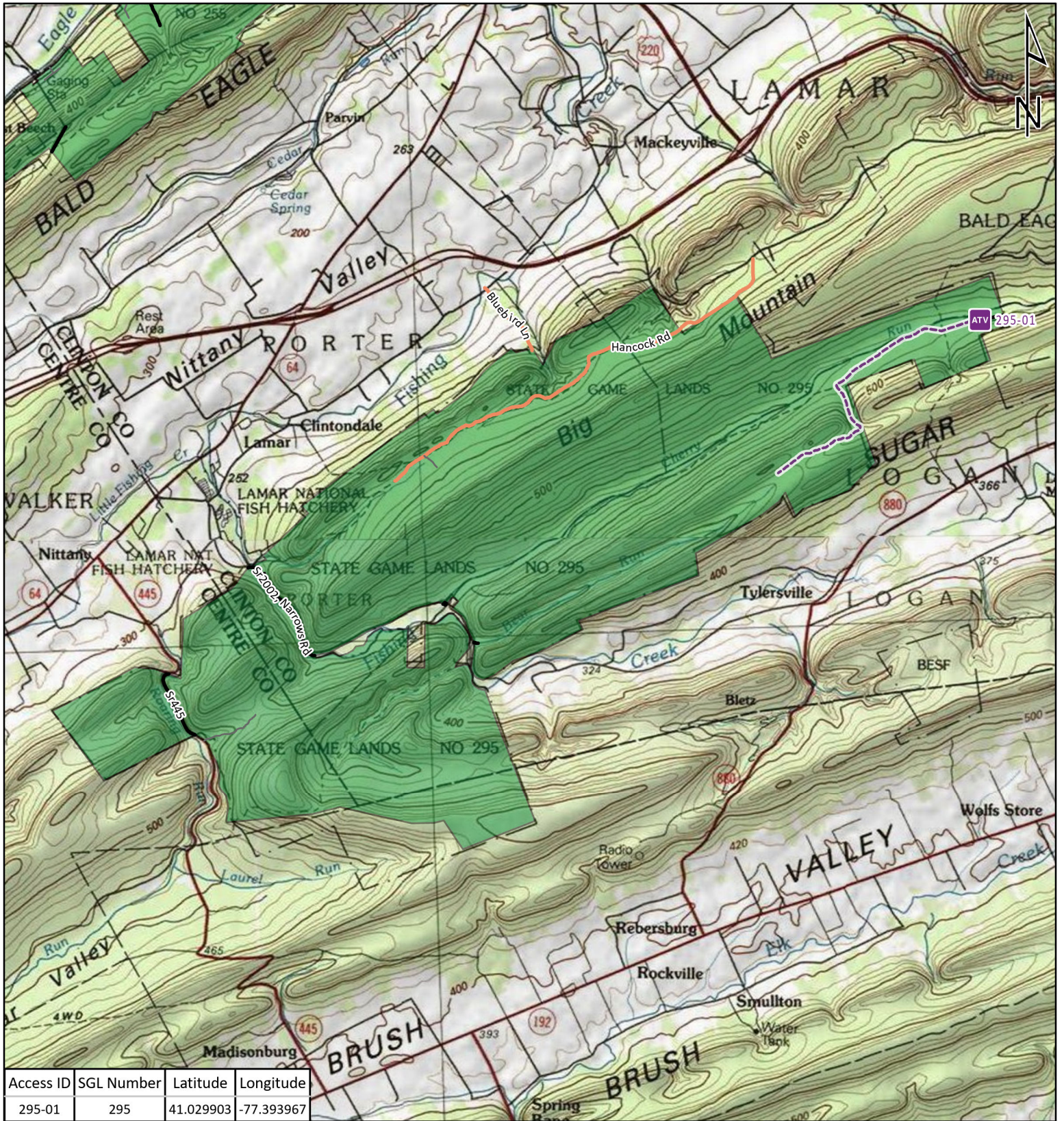
-  Disabled Hunter Access Trail Start
-  State Game Land Boundary
- Game Land Roads
-  Roads Open to Vehicle Traffic
-  Roads Seasonally Open to Vehicle Traffic
-  Roads Closed to Vehicle Traffic
-  ATV Access with Permit



STATE GAME LAND 252

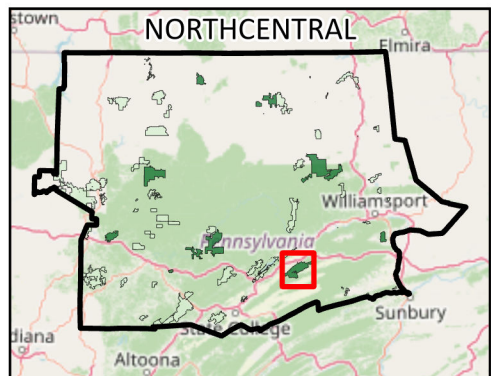


It is unlawful to ride ATV's on state game lands, except on designated roads open for persons issued a Disabled Person Permit, and who have a valid registration from the Department of Conservation & Natural Resources.



Access ID	SGL Number	Latitude	Longitude
295-01	295	41.029903	-77.393967

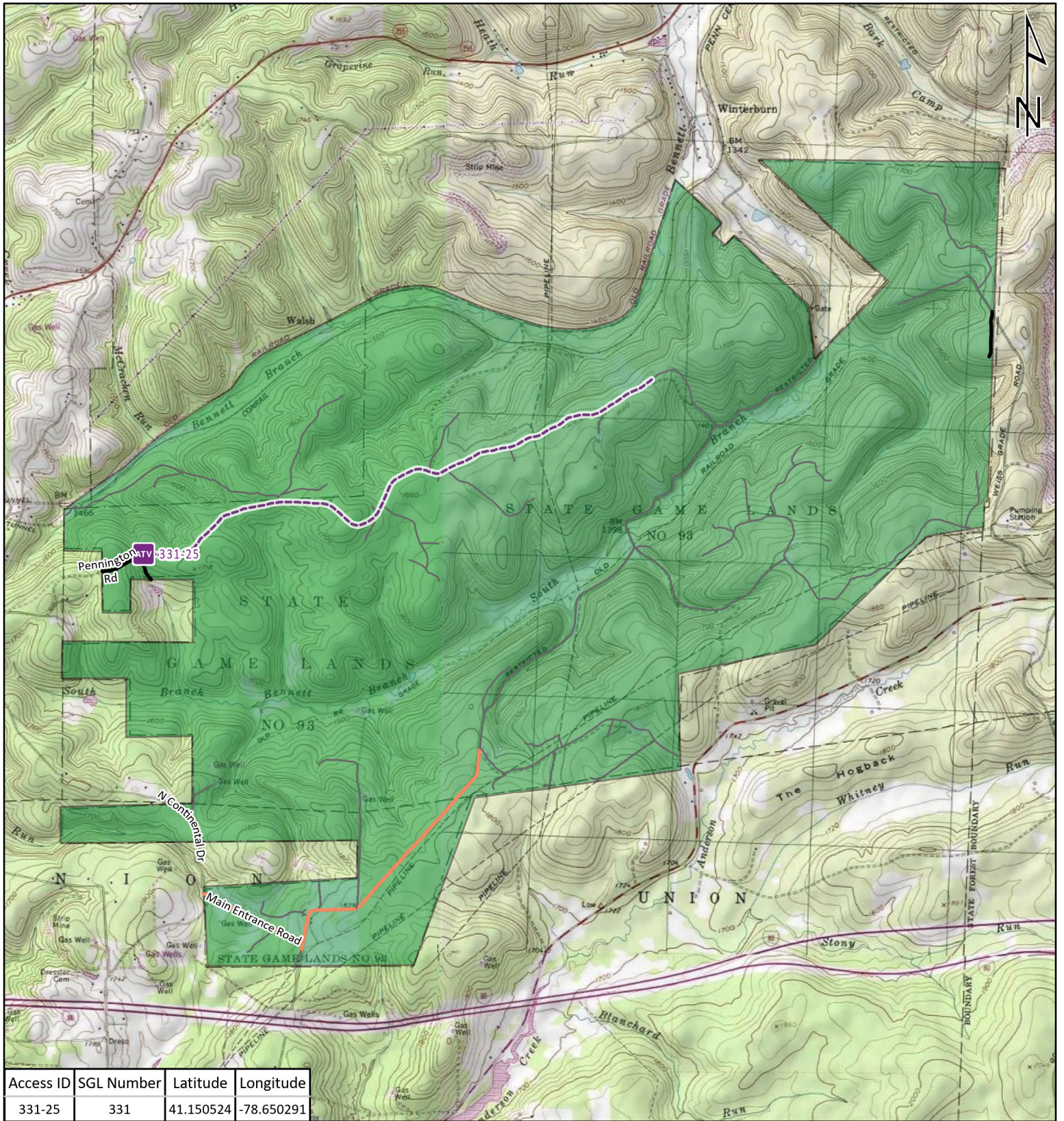
-  Disabled Hunter Access Trail Start
-  State Game Land Boundary
- Game Land Roads
-  Roads Open to Vehicle Traffic
-  Roads Seasonally Open to Vehicle Traffic
-  Roads Closed to Vehicle Traffic
-  ATV Access with Permit



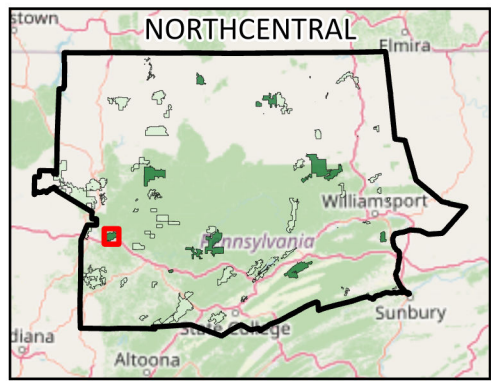
STATE GAME LAND 295



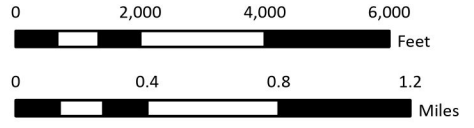
It is unlawful to ride ATV's on state game lands, except on designated roads open for persons issued a Disabled Person Permit, and who have a valid registration from the Department of Conservation & Natural Resources.



-  Disabled Hunter Access Trail Start
-  State Game Land Boundary
- Game Land Roads
 -  Roads Open to Vehicle Traffic
 -  Roads Seasonally Open to Vehicle Traffic
 -  Roads Closed to Vehicle Traffic
 -  ATV Access with Permit



STATE GAME LAND 331



It is unlawful to ride ATV's on state game lands, except on designated roads open for persons issued a Disabled Person Permit, and who have a valid registration from the Department of Conservation & Natural Resources.