



PENNSYLVANIA GAME COMMISSION

NORTHEAST REGION

3917 MEMORIAL HIGHWAY DALLAS, PA 18612 | 1-833-742-4868 (PGC HUNT) 1-833-742-9453 (PGC WILD)

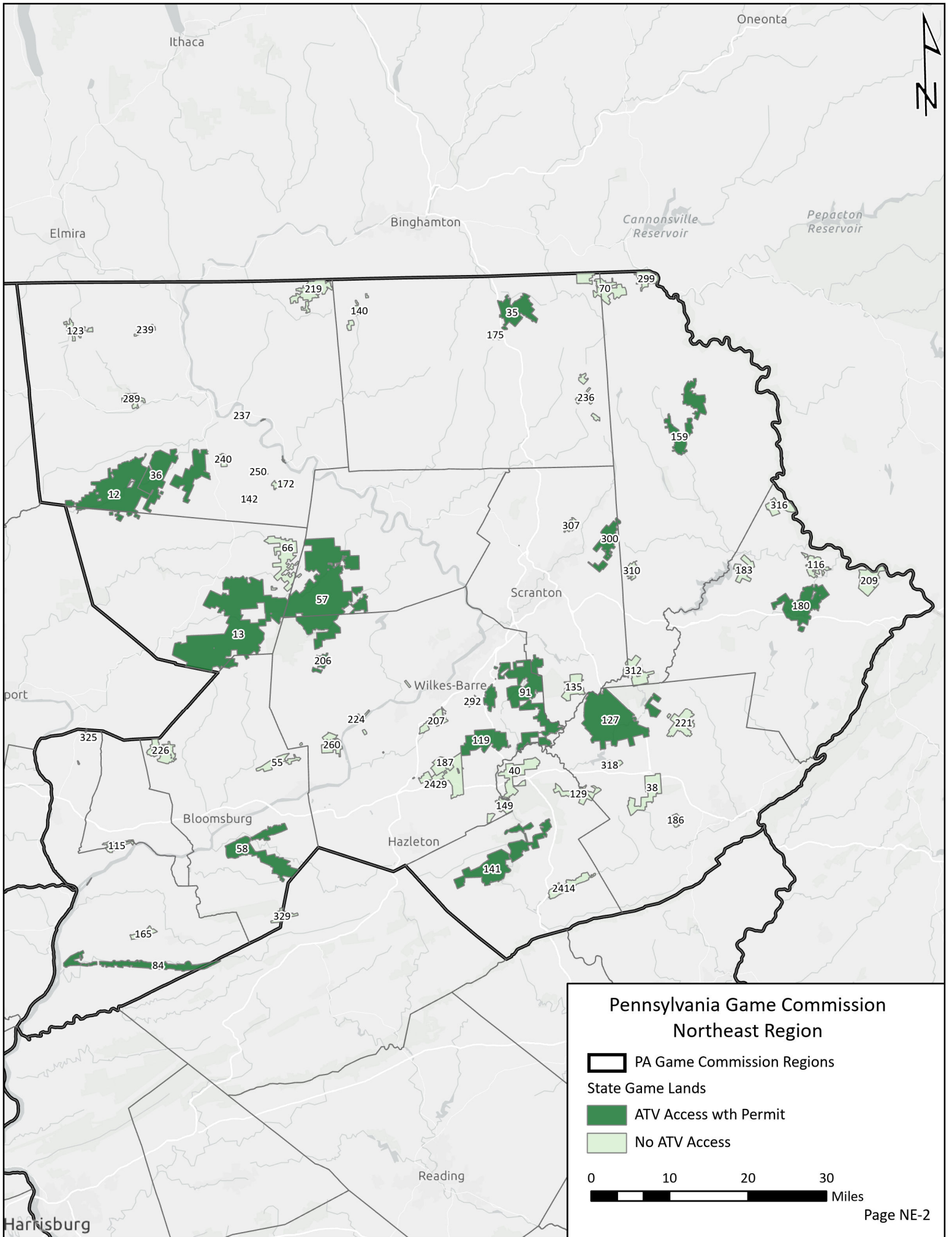
Northeast Region

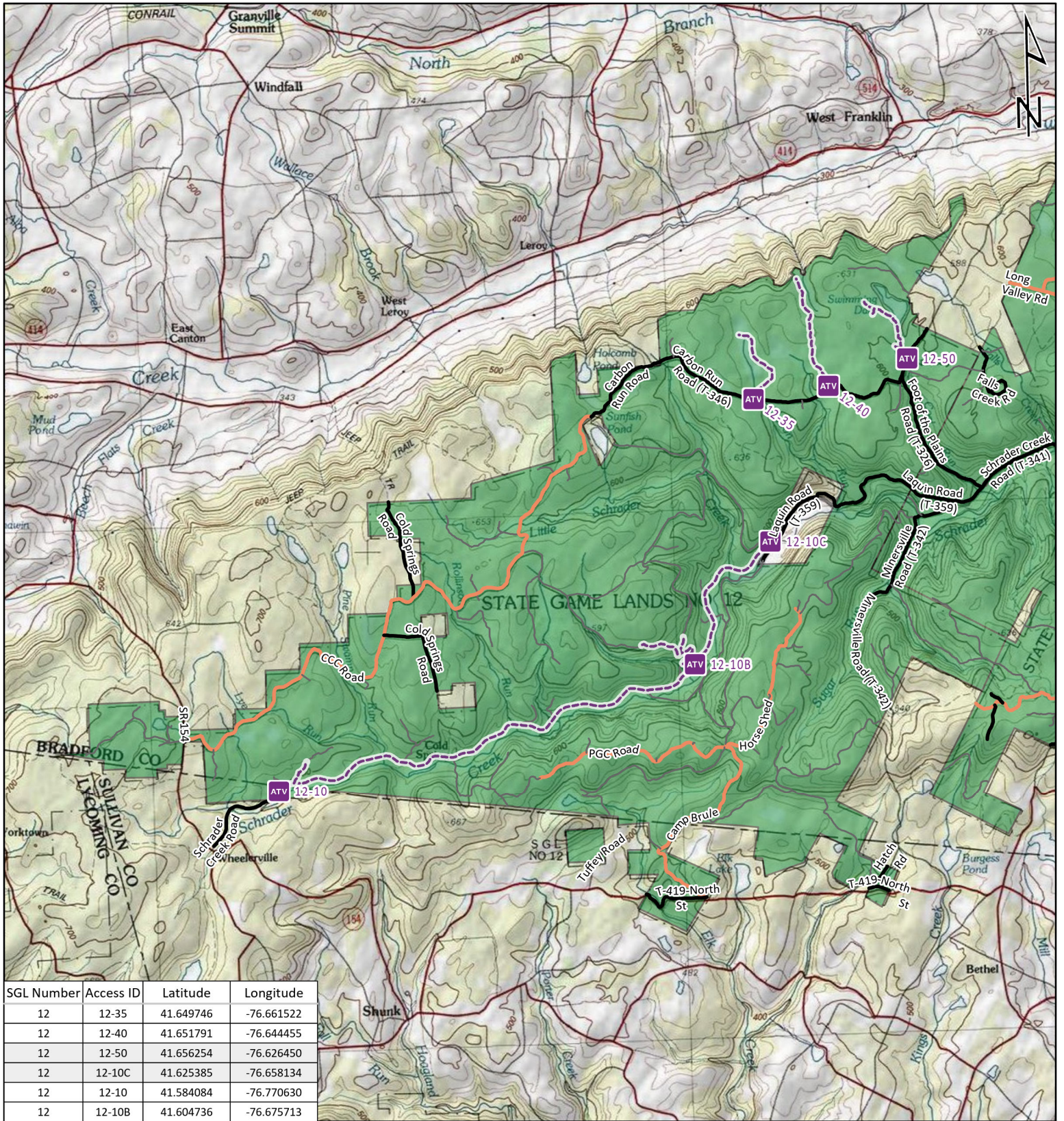


It is unlawful to ride ATVs on state game lands, except on designated roads open for persons issued a Disabled Persons Permit, and who have a valid registration from the Department of Conservation & Natural Resources.

Table of Contents

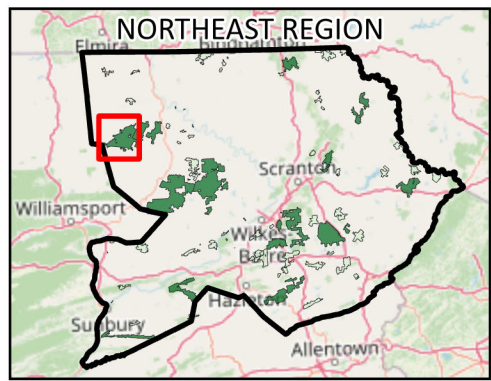
Northeast Region Overview Map	NE-2
State Game Lands 12	Bradford and Sullivan counties	NE-3
State Game Lands 13	Sullivan and Columbia counties	NE-4
State Game Lands 35	Susquehanna County	NE-5
State Game Lands 36	Bradford County	NE-6
State Game Lands 57	Wyoming and Luzerne counties	NE-7
State Game Lands 58	Columbia County	NE-8
State Game Lands 84	Northumberland and Schuylkill counties	NE-9
State Game Lands 91	Luzerne and Lackawanna counties	NE-10
State Game Lands 119	Luzerne County.....	NE-11
State Game Lands 127	Monroe County	NE-12
State Game Lands 141	Carbon County.....	NE-13
State Game Lands 159	Wayne County	NE-14
State Game Lands 180	Pike County	NE-15
State Game Lands 206	Luzerne County.....	NE-16
State Game Lands 300	Lackawanna and Wayne counties	NE-17





SGL Number	Access ID	Latitude	Longitude
12	12-35	41.649746	-76.661522
12	12-40	41.651791	-76.644455
12	12-50	41.656254	-76.626450
12	12-10C	41.625385	-76.658134
12	12-10	41.584084	-76.770630
12	12-10B	41.604736	-76.675713

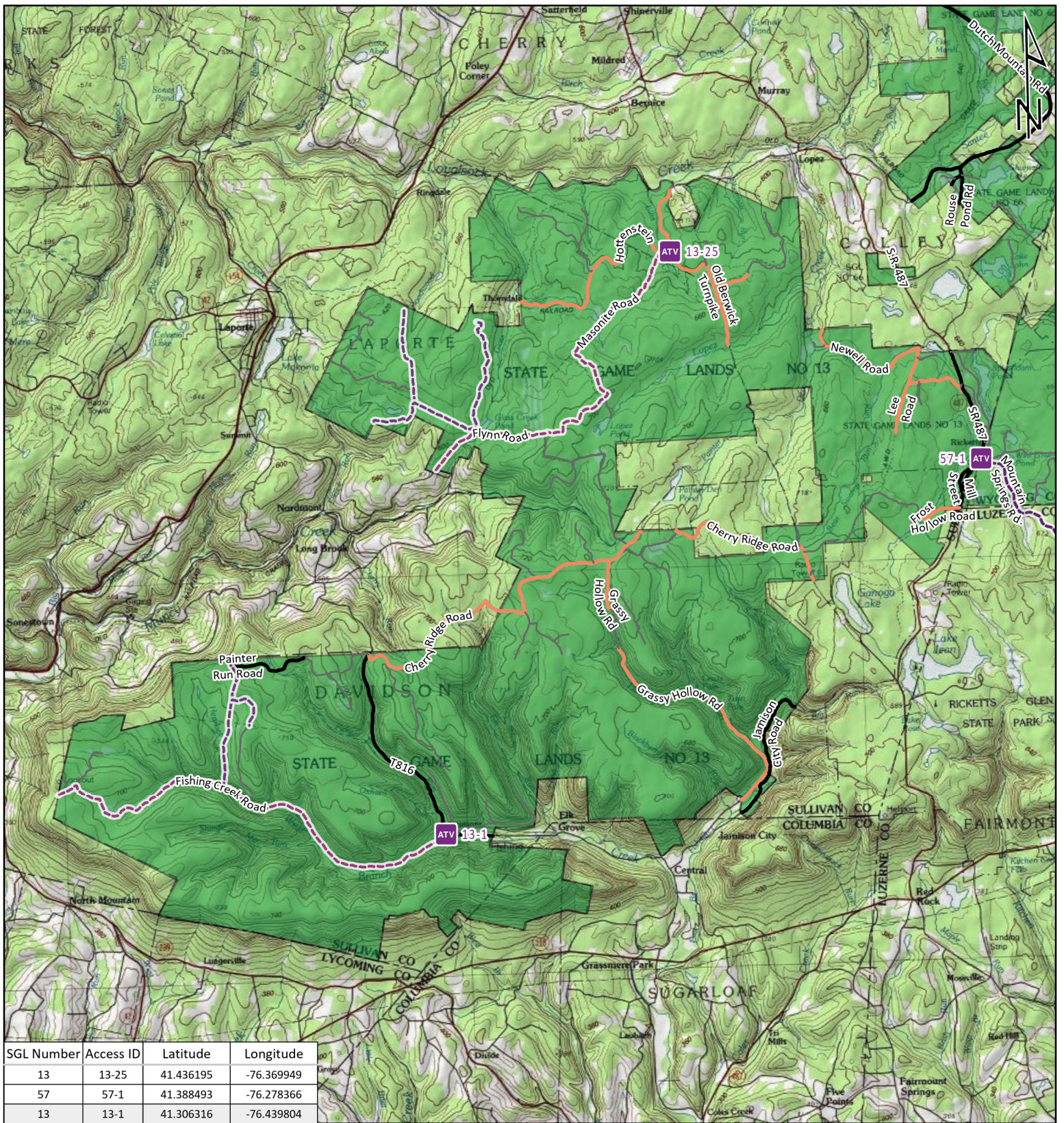
-  ATV ACCESS TRAIL START
-  STATE GAME LAND BOUNDARY
- GAME LANDS ROADS**
-  ROADS OPEN TO VEHICLE TRAFFIC
-  ROADS SEASONALLY OPEN TO VEHICLE TRAFFIC
-  ROADS CLOSED TO VEHICLE TRAFFIC
-  ATV ACCESS WITH PERMIT



STATE GAME LAND 12

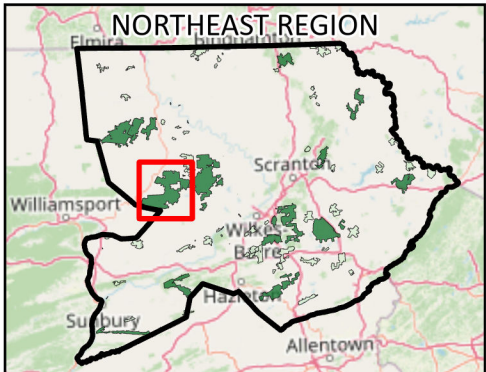


It is unlawful to ride ATV's on state game lands, except on designated roads open for persons issued a Disabled Person Permit, and who have a valid registration from the Department of Conservation & Natural Resources.



SGL Number	Access ID	Latitude	Longitude
13	13-25	41.436195	-76.369949
57	57-1	41.388493	-76.278366
13	13-1	41.306316	-76.439804

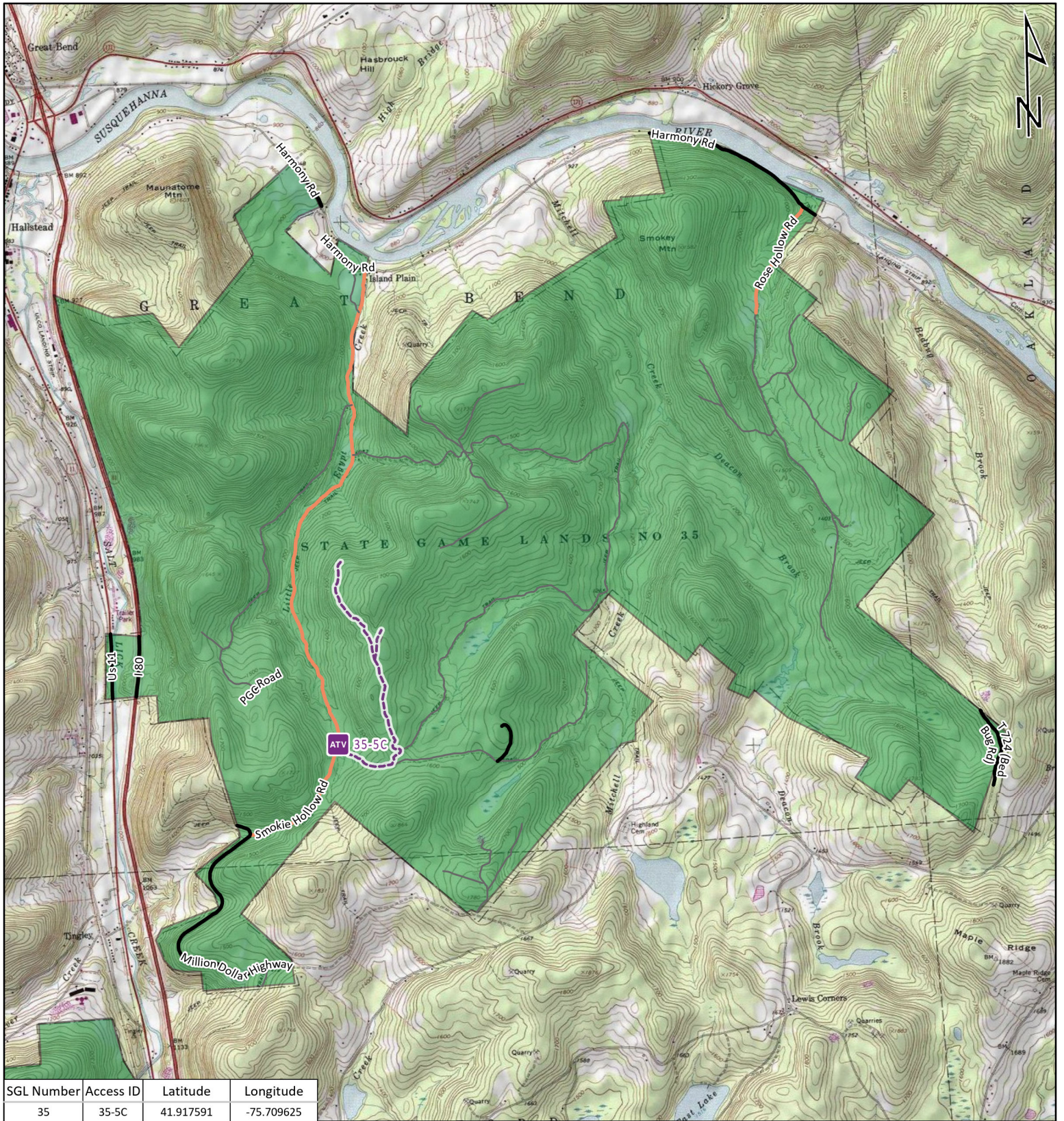
-  **ATV ACCESS TRAIL START**
-  **STATE GAME LAND BOUNDARY**
- GAME LANDS ROADS**
-  **ROADS OPEN TO VEHICLE TRAFFIC**
-  **ROADS SEASONALLY OPEN TO VEHICLE TRAFFIC**
-  **ROADS CLOSED TO VEHICLE TRAFFIC**
-  **ATV ACCESS WITH PERMIT**



STATE GAME LAND 13

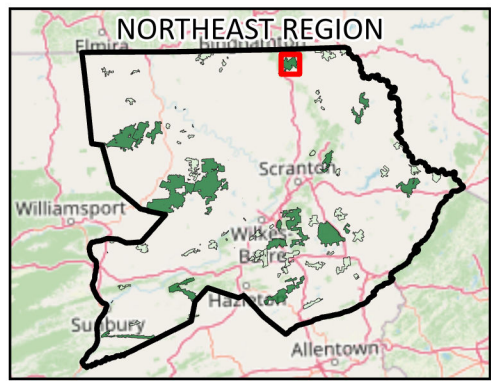


It is unlawful to ride ATV's on state game lands, except on designated roads open for persons issued a Disabled Person Permit, and who have a valid registration from the Department of Conservation & Natural Resources.

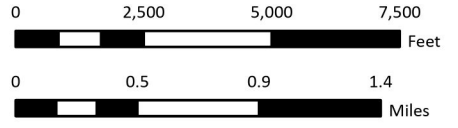


SGL Number	Access ID	Latitude	Longitude
35	35-5C	41.917591	-75.709625

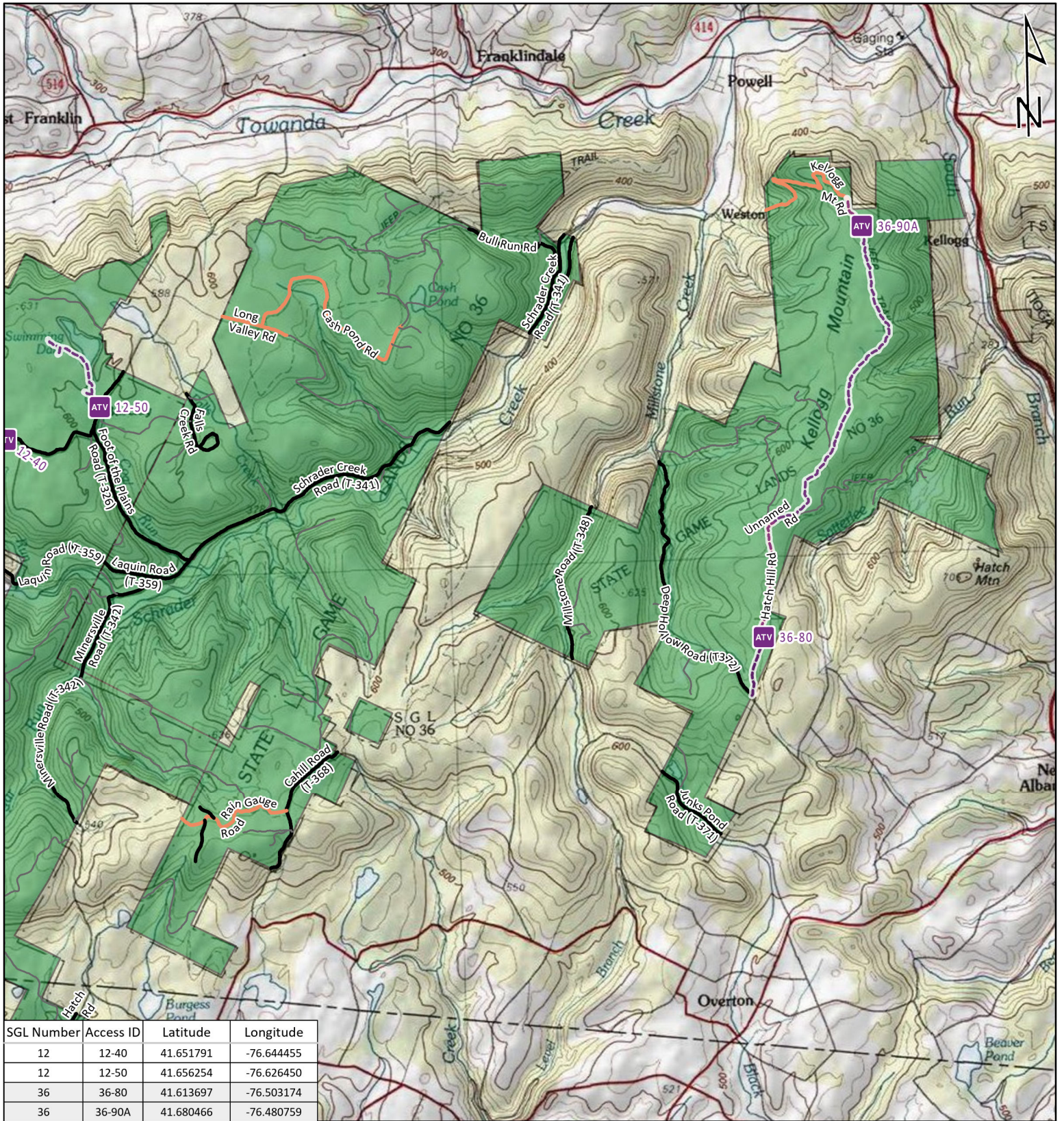
-  ATV ACCESS TRAIL START
-  STATE GAME LAND BOUNDARY
- GAME LANDS ROADS**
-  ROADS OPEN TO VEHICLE TRAFFIC
-  ROADS SEASONALLY OPEN TO VEHICLE TRAFFIC
-  ROADS CLOSED TO VEHICLE TRAFFIC
-  ATV ACCESS WITH PERMIT



STATE GAME LAND 35

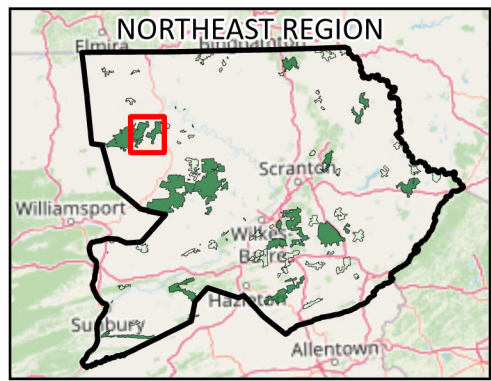


It is unlawful to ride ATV's on state game lands, except on designated roads open for persons issued a Disabled Person Permit, and who have a valid registration from the Department of Conservation & Natural Resources.



SGL Number	Access ID	Latitude	Longitude
12	12-40	41.651791	-76.644455
12	12-50	41.656254	-76.626450
36	36-80	41.613697	-76.503174
36	36-90A	41.680466	-76.480759

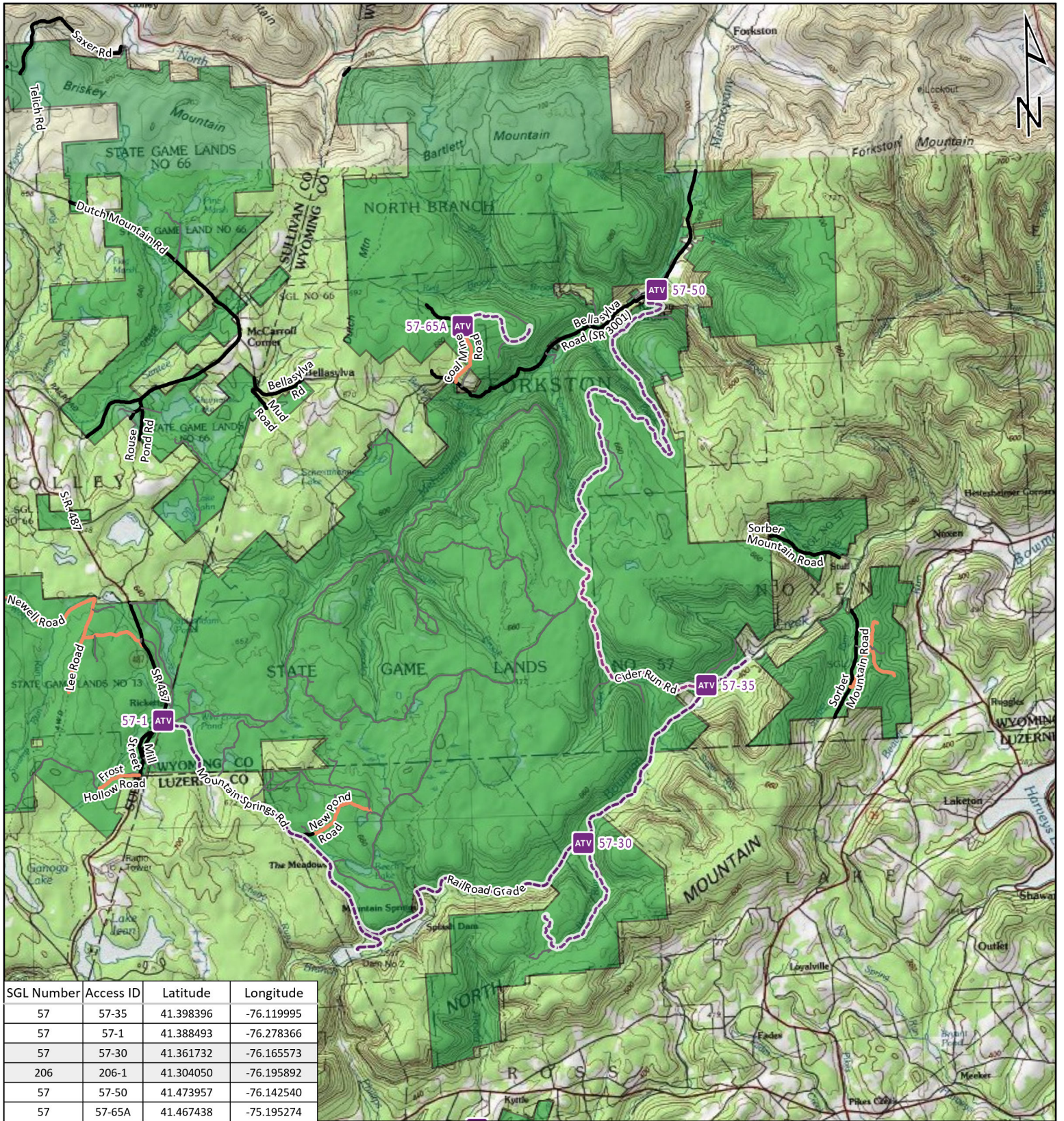
-  ATV ACCESS TRAIL START
-  STATE GAME LAND BOUNDARY
- GAME LANDS ROADS**
-  ROADS OPEN TO VEHICLE TRAFFIC
-  ROADS SEASONALLY OPEN TO VEHICLE TRAFFIC
-  ROADS CLOSED TO VEHICLE TRAFFIC
-  ATV ACCESS WITH PERMIT



STATE GAME LAND 36



It is unlawful to ride ATV's on state game lands, except on designated roads open for persons issued a Disabled Person Permit, and who have a valid registration from the Department of Conservation & Natural Resources.



SGL Number	Access ID	Latitude	Longitude
57	57-35	41.398396	-76.119995
57	57-1	41.388493	-76.278366
57	57-30	41.361732	-76.165573
206	206-1	41.304050	-76.195892
57	57-50	41.473957	-76.142540
57	57-65A	41.467438	-75.195274

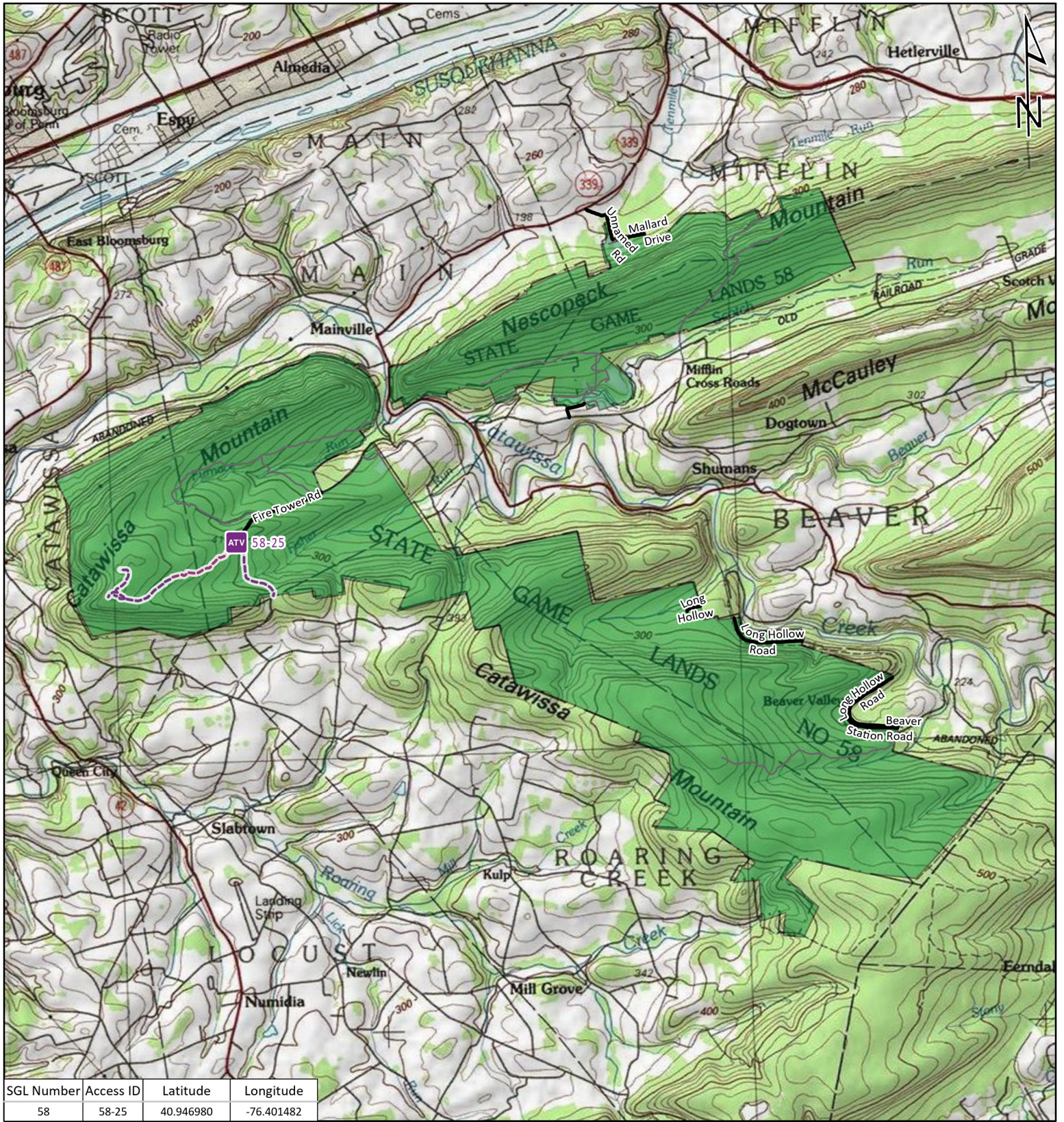
- ATV ACCESS TRAIL START
- STATE GAME LAND BOUNDARY
- GAME LANDS ROADS**
- ROADS OPEN TO VEHICLE TRAFFIC
- ROADS SEASONALLY OPEN TO VEHICLE TRAFFIC
- ROADS CLOSED TO VEHICLE TRAFFIC
- ATV ACCESS WITH PERMIT



STATE GAME LAND 57

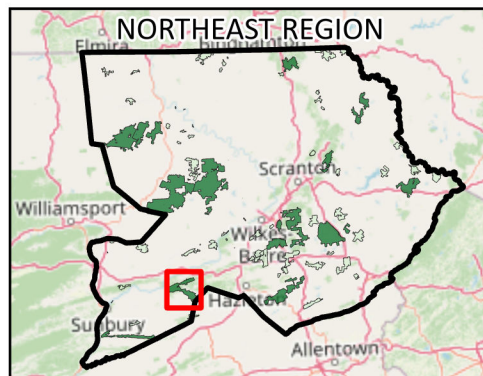


It is unlawful to ride ATV's on state game lands, except on designated roads open for persons issued a Disabled Person Permit, and who have a valid registration from the Department of Conservation & Natural Resources.

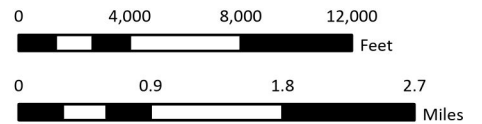


SGL Number	Access ID	Latitude	Longitude
58	58-25	40.946980	-76.401482

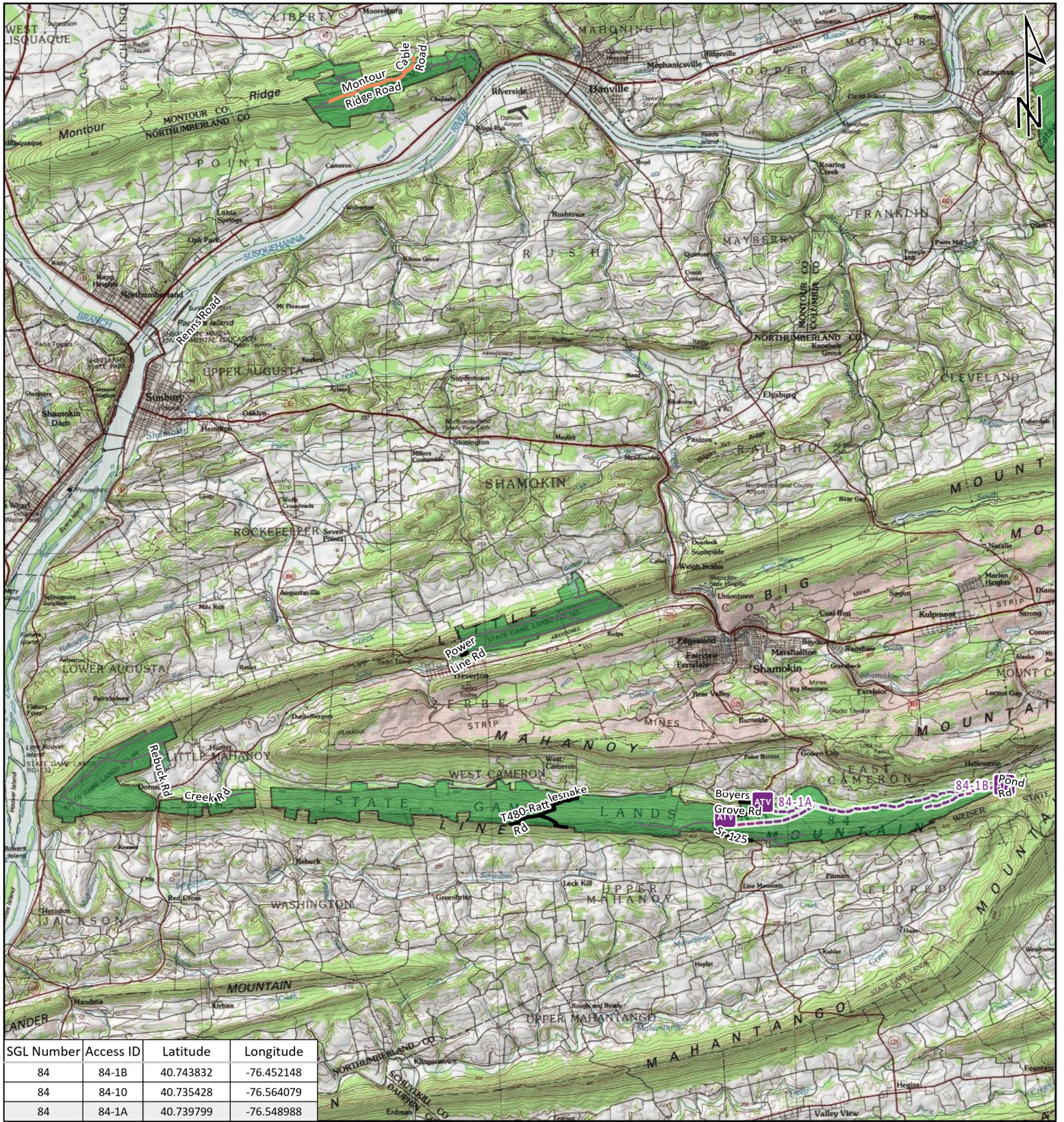
-  ATV ACCESS TRAIL START
-  STATE GAME LAND BOUNDARY
- GAME LANDS ROADS**
-  ROADS OPEN TO VEHICLE TRAFFIC
-  ROADS SEASONALLY OPEN TO VEHICLE TRAFFIC
-  ROADS CLOSED TO VEHICLE TRAFFIC
-  ATV ACCESS WITH PERMIT



STATE GAME LAND 58

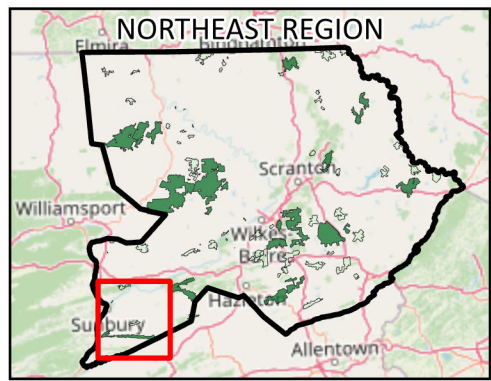


It is unlawful to ride ATV's on state game lands, except on designated roads open for persons issued a Disabled Person Permit, and who have a valid registration from the Department of Conservation & Natural Resources.



SGL Number	Access ID	Latitude	Longitude
84	84-1B	40.743832	-76.452148
84	84-10	40.735428	-76.564079
84	84-1A	40.739799	-76.548988

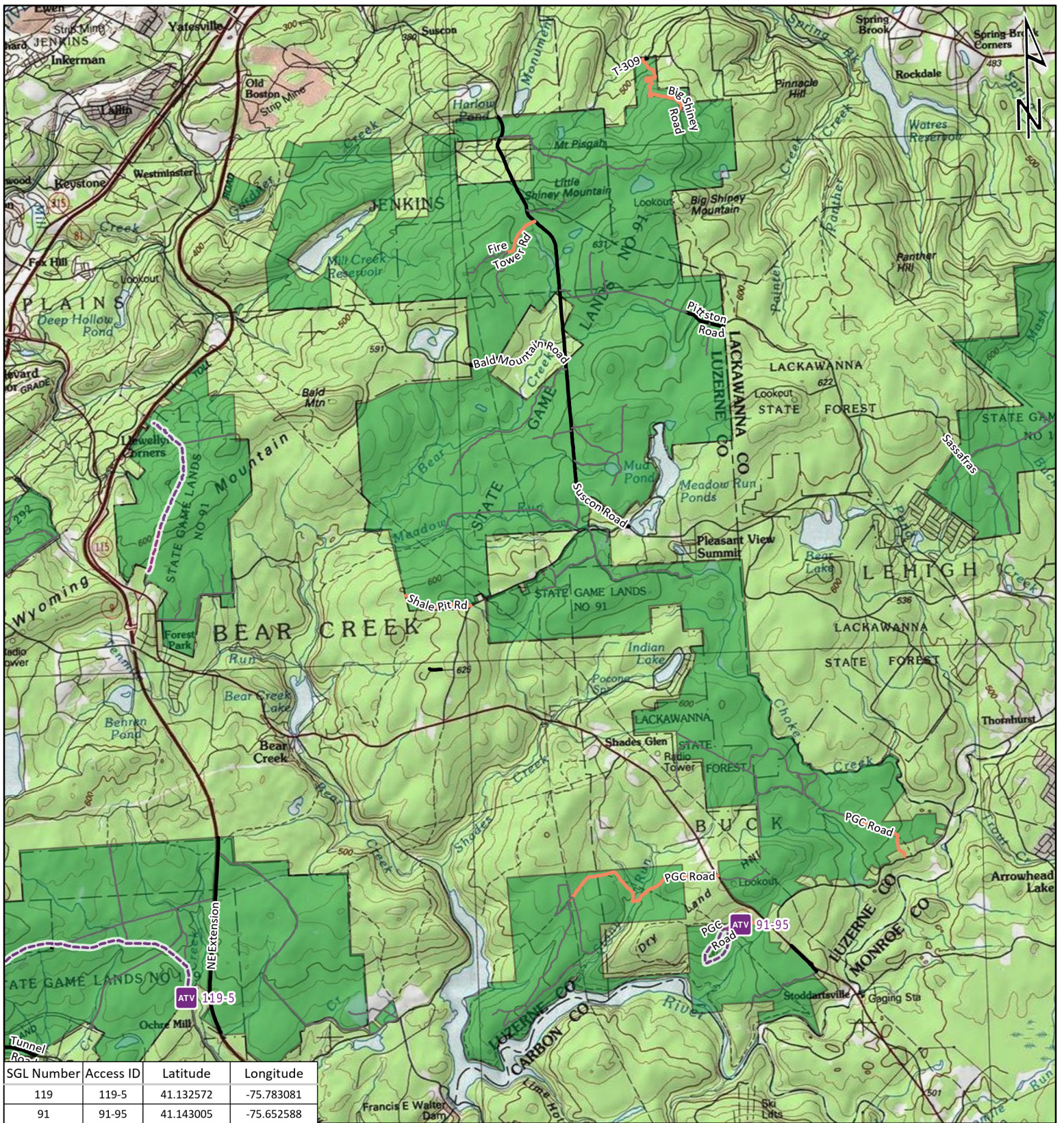
-  ATV ACCESS TRAIL START
-  STATE GAME LAND BOUNDARY
- GAME LANDS ROADS**
-  ROADS OPEN TO VEHICLE TRAFFIC
-  ROADS SEASONALLY OPEN TO VEHICLE TRAFFIC
-  ROADS CLOSED TO VEHICLE TRAFFIC
-  ATV ACCESS WITH PERMIT



STATE GAME LAND 84

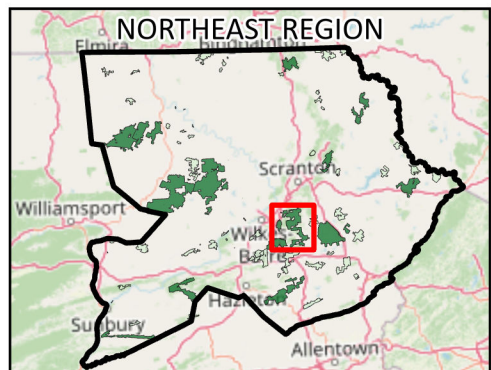


It is unlawful to ride ATV's on state game lands, except on designated roads open for persons issued a Disabled Person Permit, and who have a valid registration from the Department of Conservation & Natural Resources.



SGL Number	Access ID	Latitude	Longitude
119	119-5	41.132572	-75.783081
91	91-95	41.143005	-75.652588

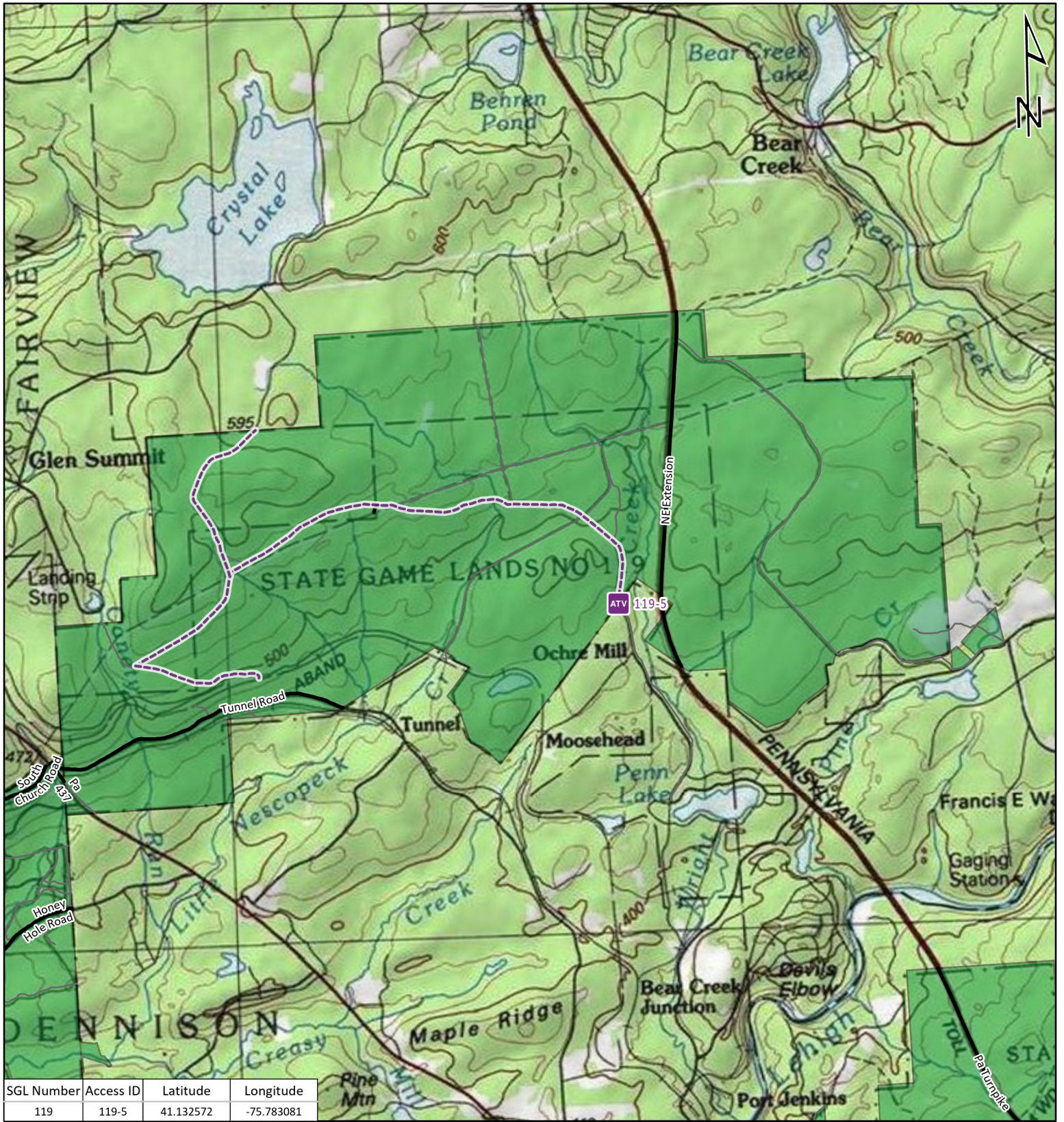
-  ATV ACCESS TRAIL START
-  STATE GAME LAND BOUNDARY
- GAME LANDS ROADS**
-  ROADS OPEN TO VEHICLE TRAFFIC
-  ROADS SEASONALLY OPEN TO VEHICLE TRAFFIC
-  ROADS CLOSED TO VEHICLE TRAFFIC
-  ATV ACCESS WITH PERMIT



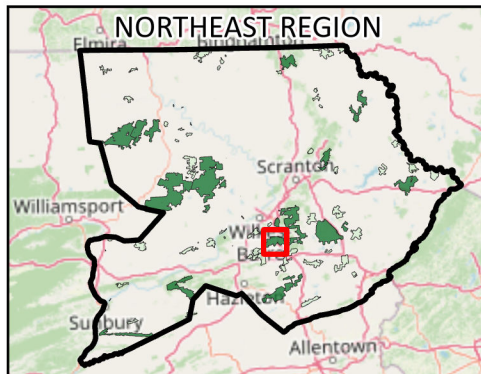
STATE GAME LAND 91



It is unlawful to ride ATV's on state game lands, except on designated roads open for persons issued a Disabled Person Permit, and who have a valid registration from the Department of Conservation & Natural Resources.



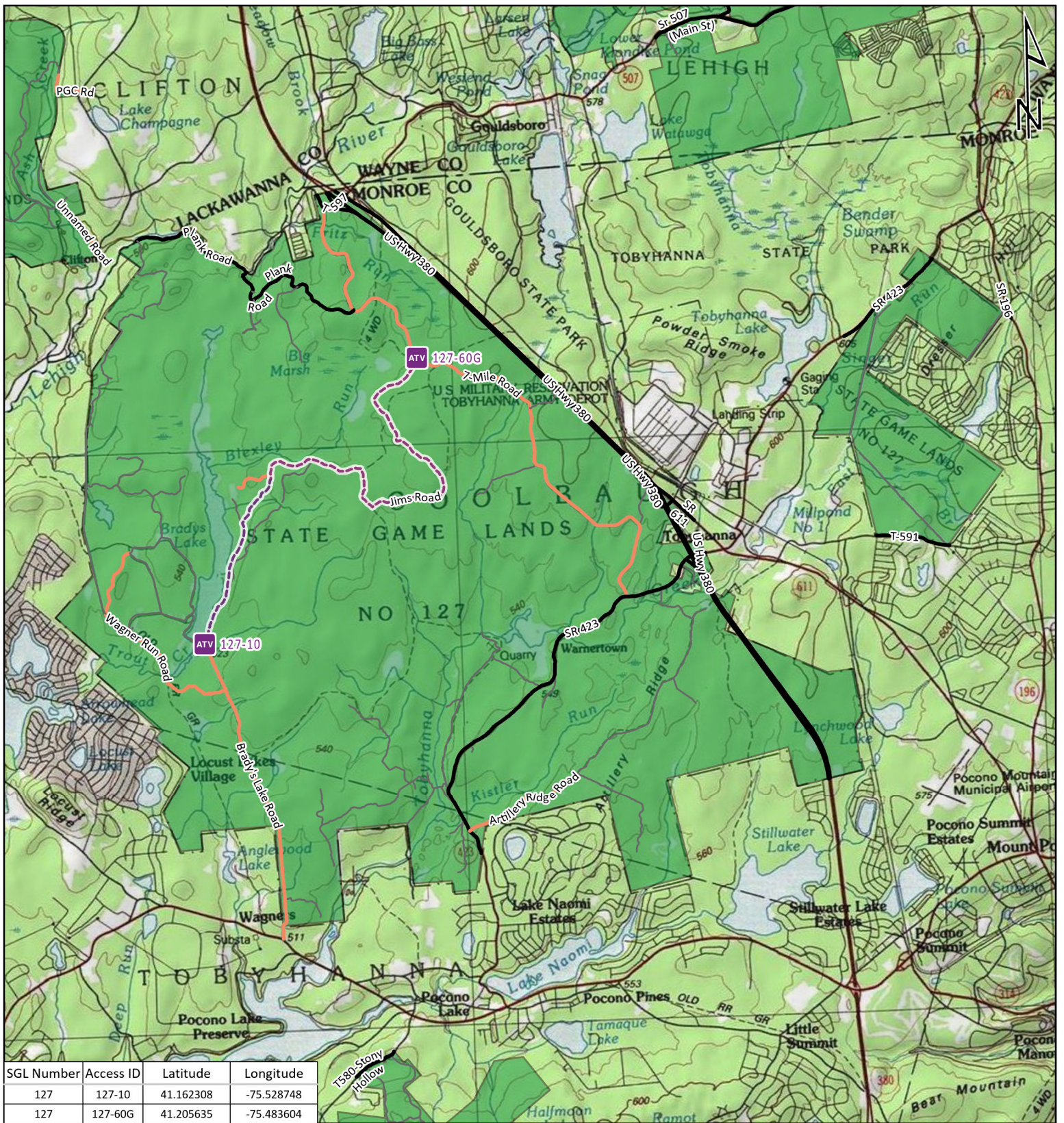
- ATV ACCESS TRAIL START
- STATE GAME LAND BOUNDARY
- GAME LANDS ROADS**
- ROADS OPEN TO VEHICLE TRAFFIC
- ROADS SEASONALLY OPEN TO VEHICLE TRAFFIC
- ROADS CLOSED TO VEHICLE TRAFFIC
- ATV ACCESS WITH PERMIT



STATE GAME LAND 119

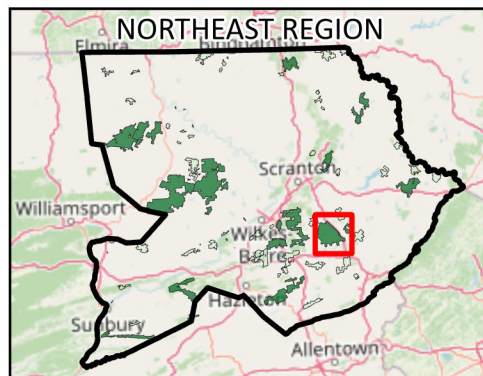


It is unlawful to ride ATV's on state game lands, except on designated roads open for persons issued a Disabled Person Permit, and who have a valid registration from the Department of Conservation & Natural Resources.



SGL Number	Access ID	Latitude	Longitude
127	127-10	41.162308	-75.528748
127	127-60G	41.205635	-75.483604

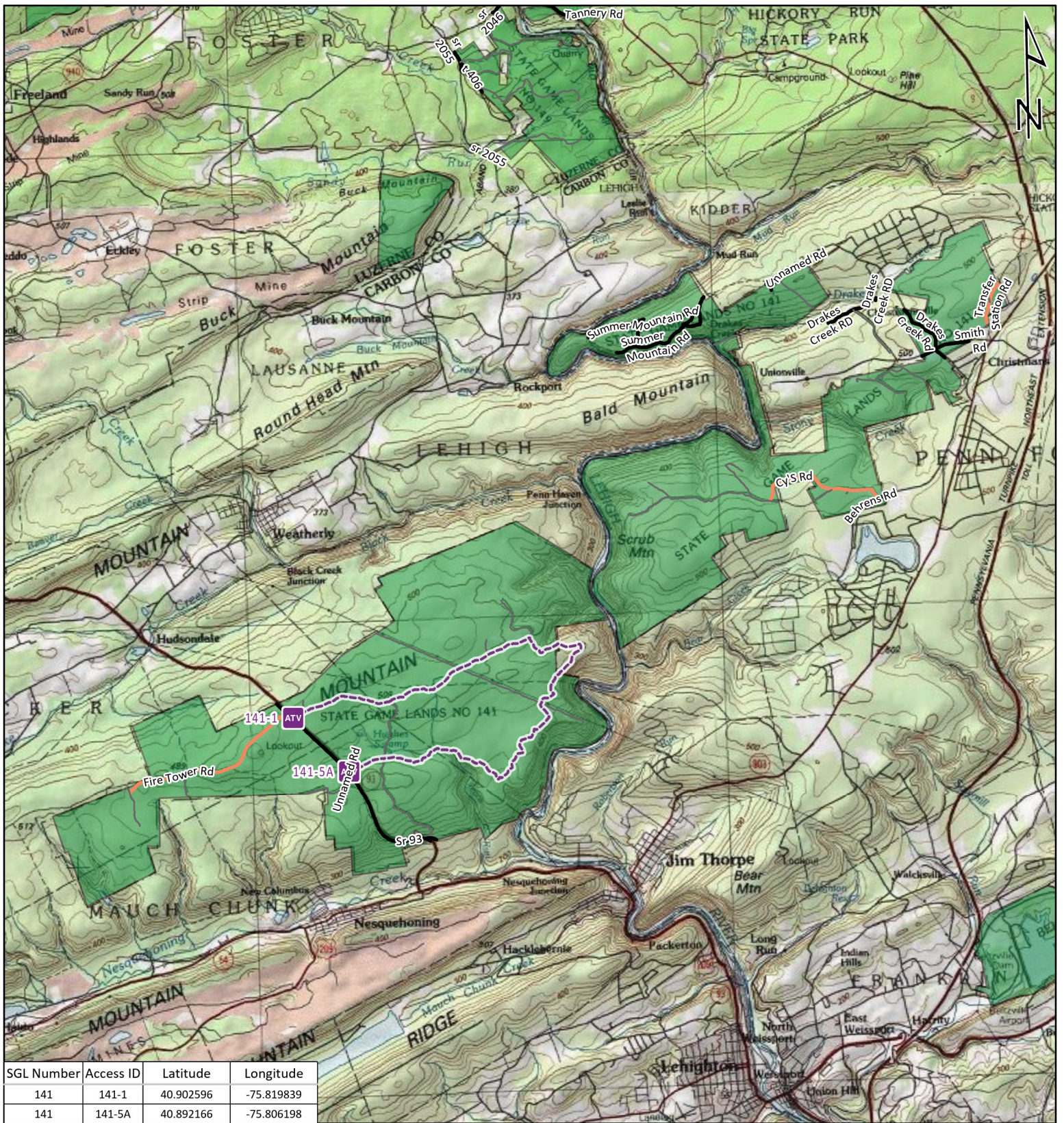
- ATV ACCESS TRAIL START
- STATE GAME LAND BOUNDARY
- GAME LANDS ROADS**
- ROADS OPEN TO VEHICLE TRAFFIC
- ROADS SEASONALLY OPEN TO VEHICLE TRAFFIC
- ROADS CLOSED TO VEHICLE TRAFFIC
- ATV ACCESS WITH PERMIT



STATE GAME LAND 127

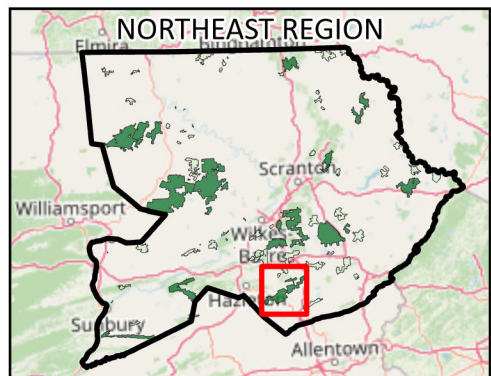


It is unlawful to ride ATV's on state game lands, except on designated roads open for persons issued a Disabled Person Permit, and who have a valid registration from the Department of Conservation & Natural Resources.

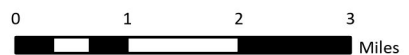
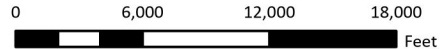


SGL Number	Access ID	Latitude	Longitude
141	141-1	40.902596	-75.819839
141	141-5A	40.892166	-75.806198

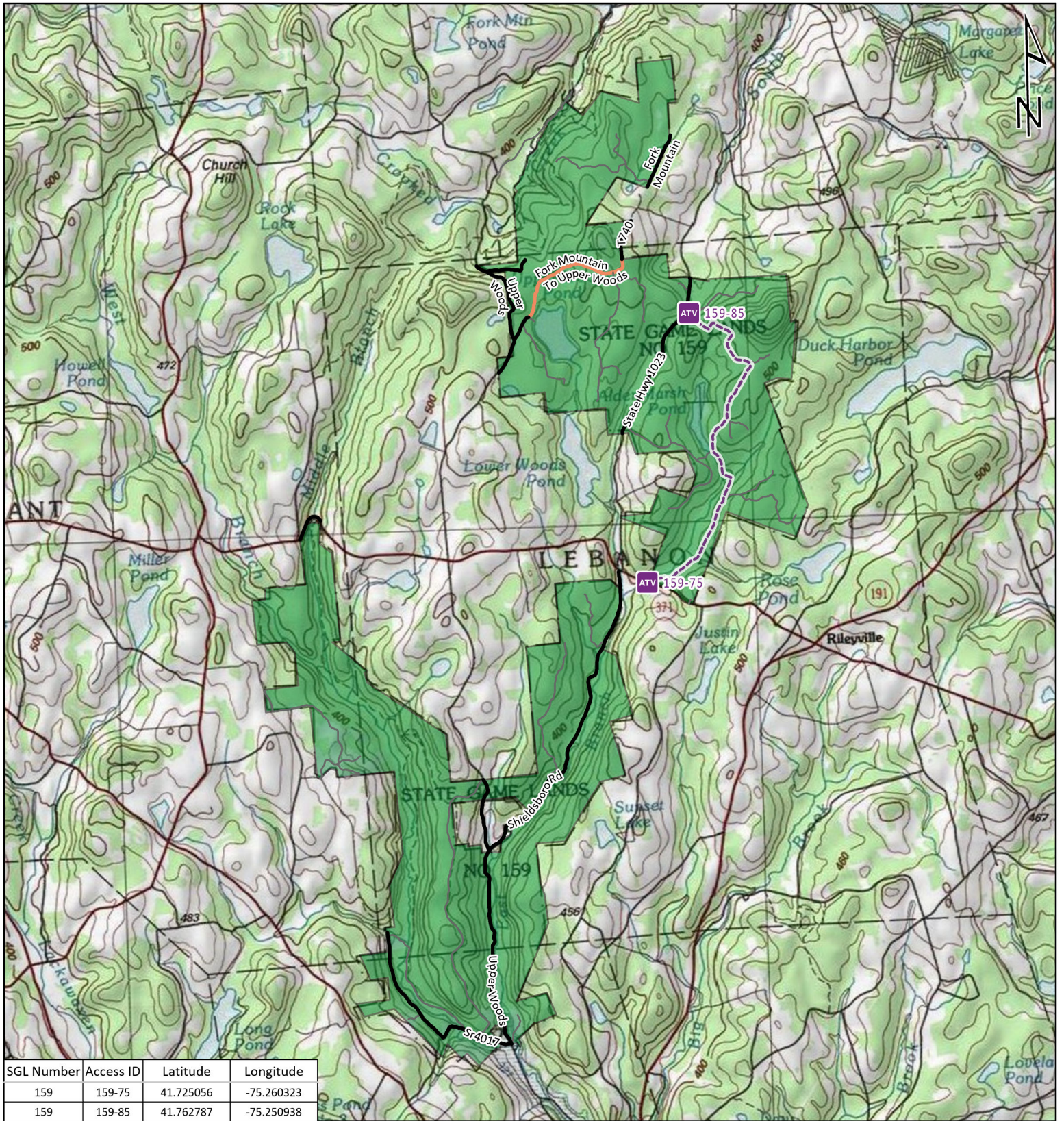
-  ATV ACCESS TRAIL START
-  STATE GAME LAND BOUNDARY
- GAME LANDS ROADS**
-  ROADS OPEN TO VEHICLE TRAFFIC
-  ROADS SEASONALLY OPEN TO VEHICLE TRAFFIC
-  ROADS CLOSED TO VEHICLE TRAFFIC
-  ATV ACCESS WITH PERMIT



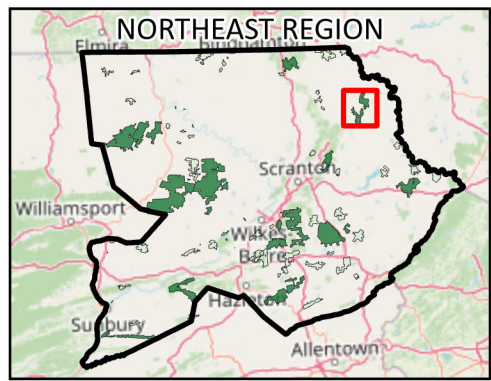
STATE GAME LAND 141



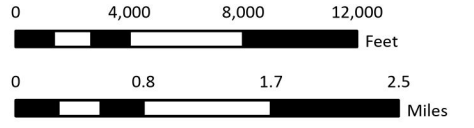
It is unlawful to ride ATV's on state game lands, except on designated roads open for persons issued a Disabled Person Permit, and who have a valid registration from the Department of Conservation & Natural Resources.



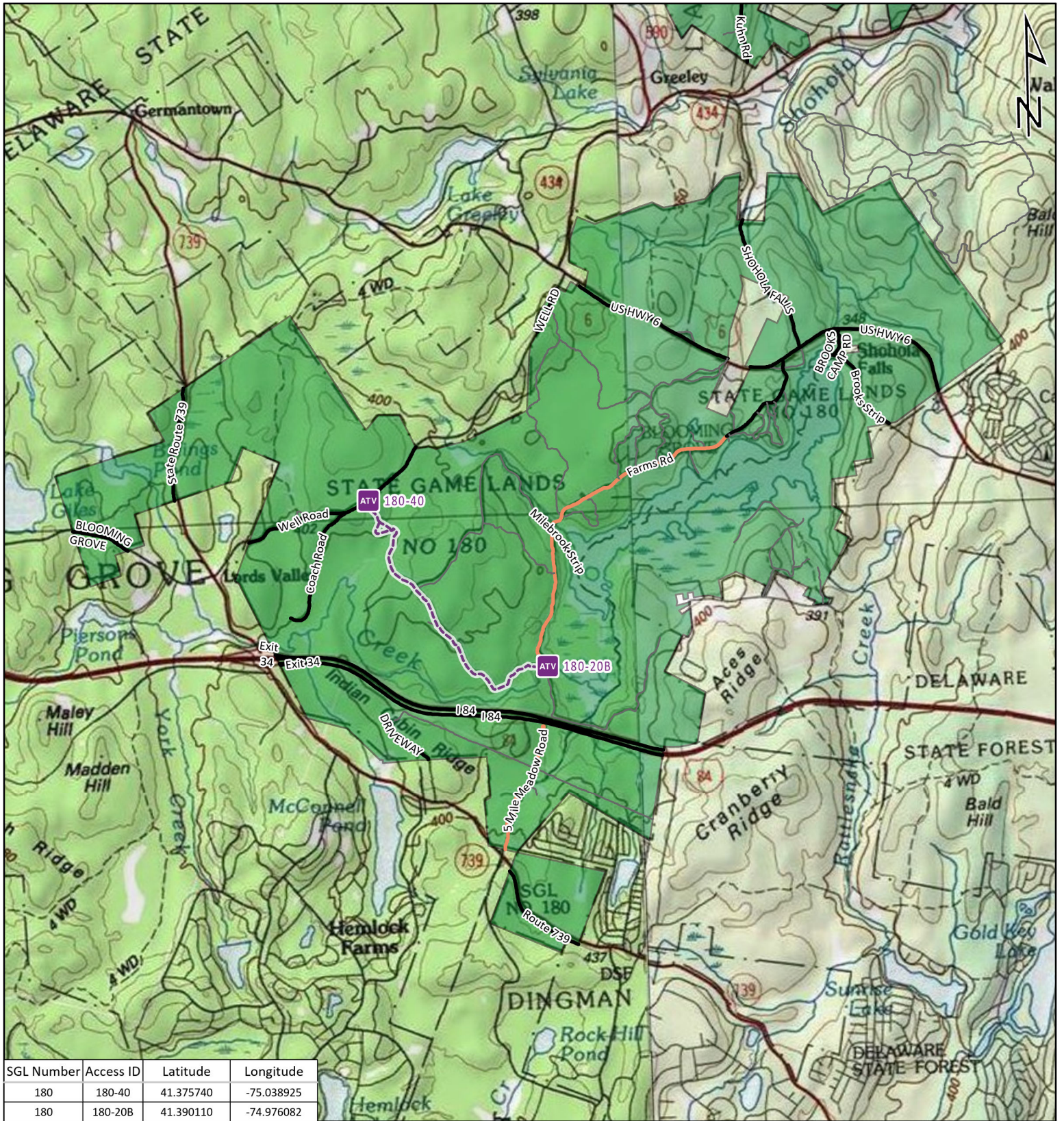
-  ATV ACCESS TRAIL START
-  STATE GAME LAND BOUNDARY
- GAME LANDS ROADS**
-  ROADS OPEN TO VEHICLE TRAFFIC
-  ROADS SEASONALLY OPEN TO VEHICLE TRAFFIC
-  ROADS CLOSED TO VEHICLE TRAFFIC
-  ATV ACCESS WITH PERMIT



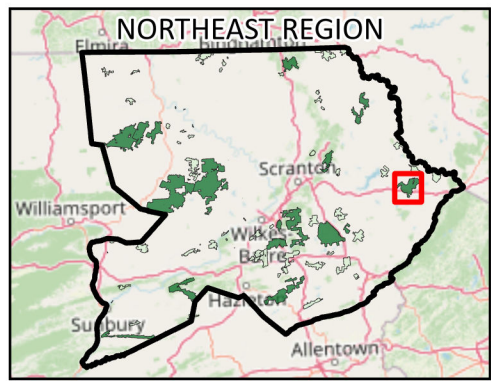
STATE GAME LAND 159



It is unlawful to ride ATV's on state game lands, except on designated roads open for persons issued a Disabled Person Permit, and who have a valid registration from the Department of Conservation & Natural Resources.



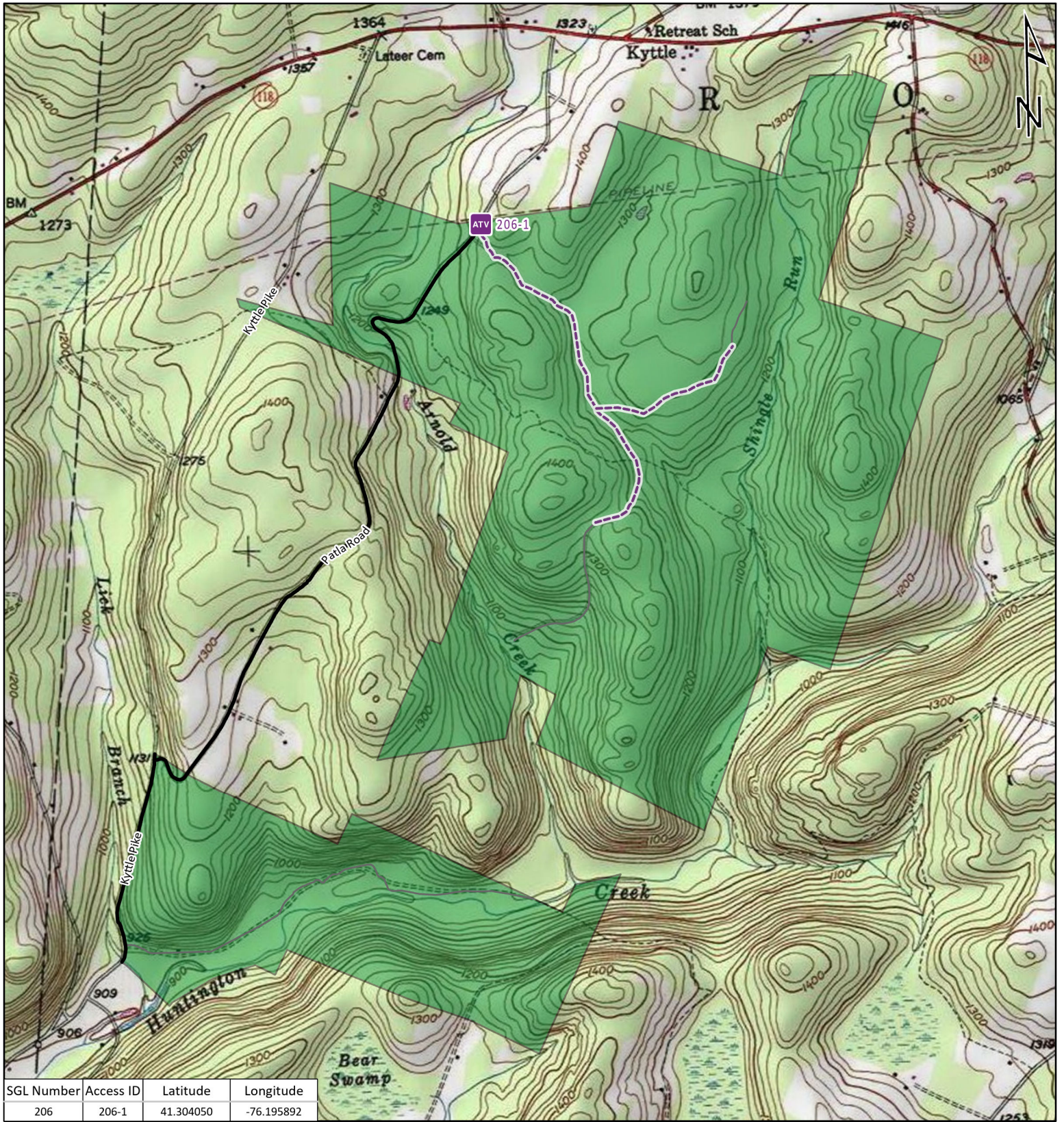
-  ATV ACCESS TRAIL START
-  STATE GAME LAND BOUNDARY
- GAME LANDS ROADS**
-  ROADS OPEN TO VEHICLE TRAFFIC
-  ROADS SEASONALLY OPEN TO VEHICLE TRAFFIC
-  ROADS CLOSED TO VEHICLE TRAFFIC
-  ATV ACCESS WITH PERMIT



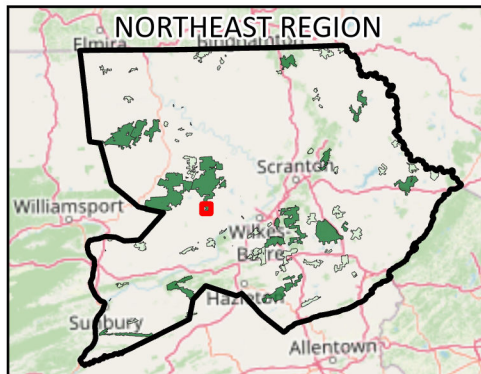
STATE GAME LAND 180



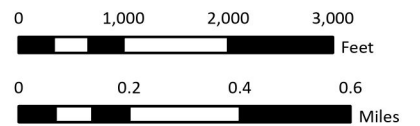
It is unlawful to ride ATV's on state game lands, except on designated roads open for persons issued a Disabled Person Permit, and who have a valid registration from the Department of Conservation & Natural Resources.



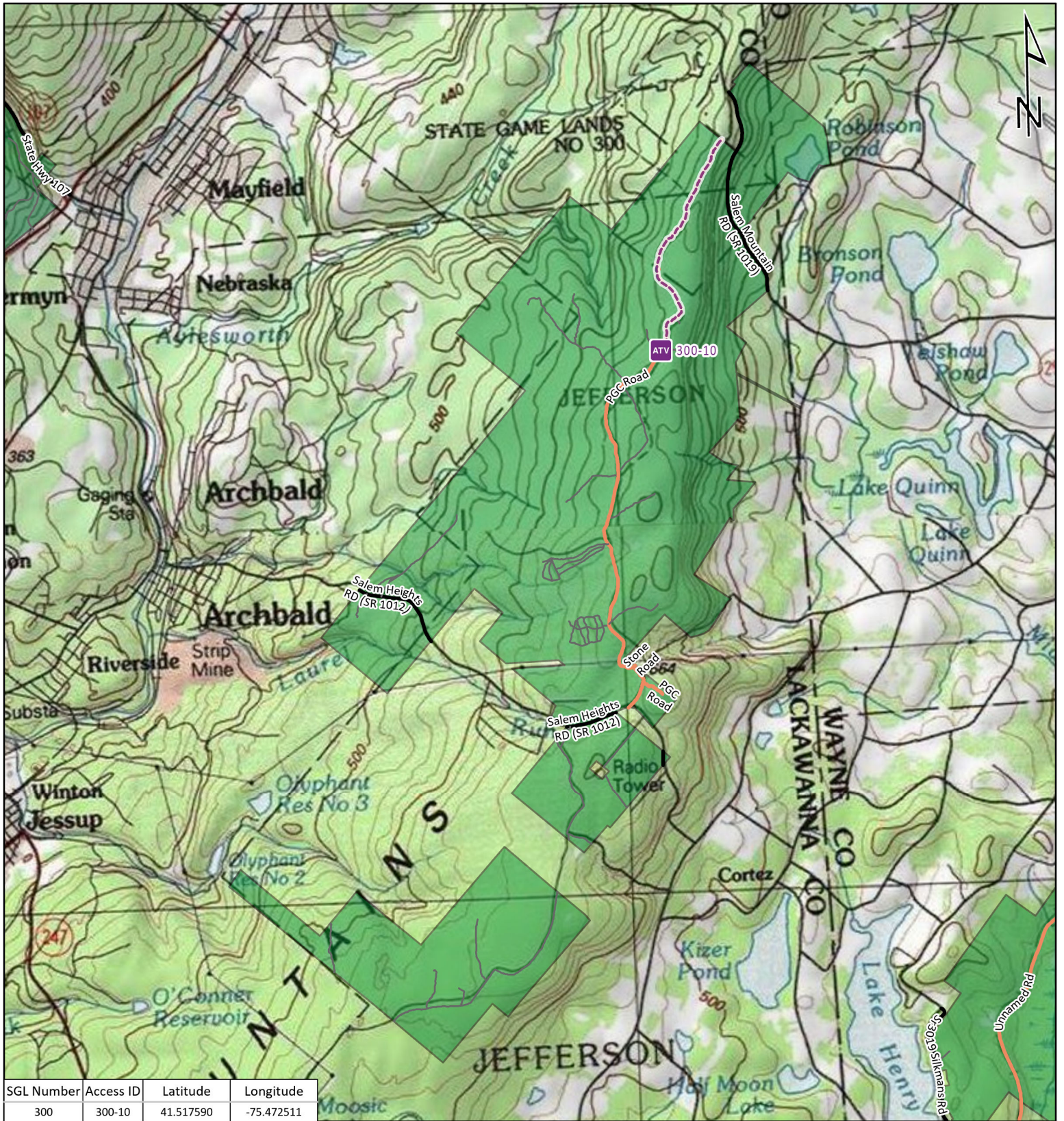
-  ATV ACCESS TRAIL START
-  STATE GAME LAND BOUNDARY
- GAME LANDS ROADS**
-  ROADS OPEN TO VEHICLE TRAFFIC
-  ROADS SEASONALLY OPEN TO VEHICLE TRAFFIC
-  ROADS CLOSED TO VEHICLE TRAFFIC
-  ATV ACCESS WITH PERMIT



STATE GAME LAND 206

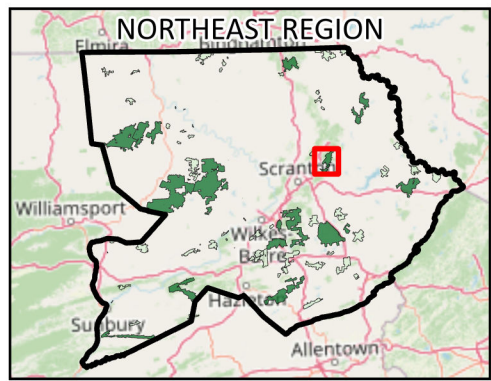


It is unlawful to ride ATV's on state game lands, except on designated roads open for persons issued a Disabled Person Permit, and who have a valid registration from the Department of Conservation & Natural Resources.



SGL Number	Access ID	Latitude	Longitude
300	300-10	41.517590	-75.472511

-  ATV ACCESS TRAIL START
-  STATE GAME LAND BOUNDARY
- GAME LANDS ROADS**
-  ROADS OPEN TO VEHICLE TRAFFIC
-  ROADS SEASONALLY OPEN TO VEHICLE TRAFFIC
-  ROADS CLOSED TO VEHICLE TRAFFIC
-  ATV ACCESS WITH PERMIT



STATE GAME LAND 300



It is unlawful to ride ATV's on state game lands, except on designated roads open for persons issued a Disabled Person Permit, and who have a valid registration from the Department of Conservation & Natural Resources.