



# PENNSYLVANIA GAME COMMISSION

## NORTHWEST REGION

1509 PITTSBURGH RD, FRANKLIN PA 16323 | 1-833-742-4868 (PGC HUNT) 1-833-742-9453 (PGC WILD)

## Northwest Region

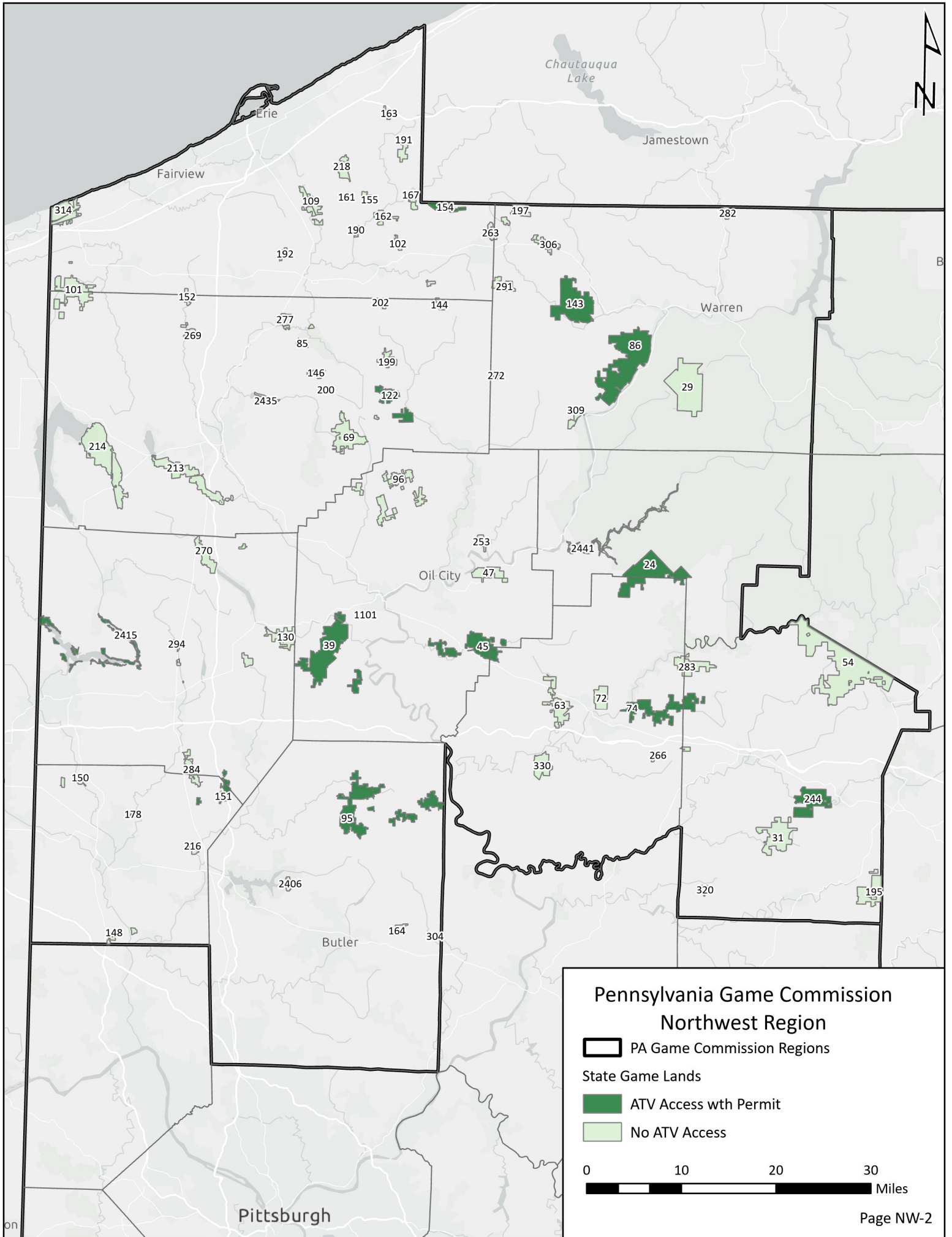


It is unlawful to ride ATVs on state game lands, except on designated roads open for persons issued a Disabled Persons Permit, and who have a valid registration from the Department of Conservation & Natural Resources.

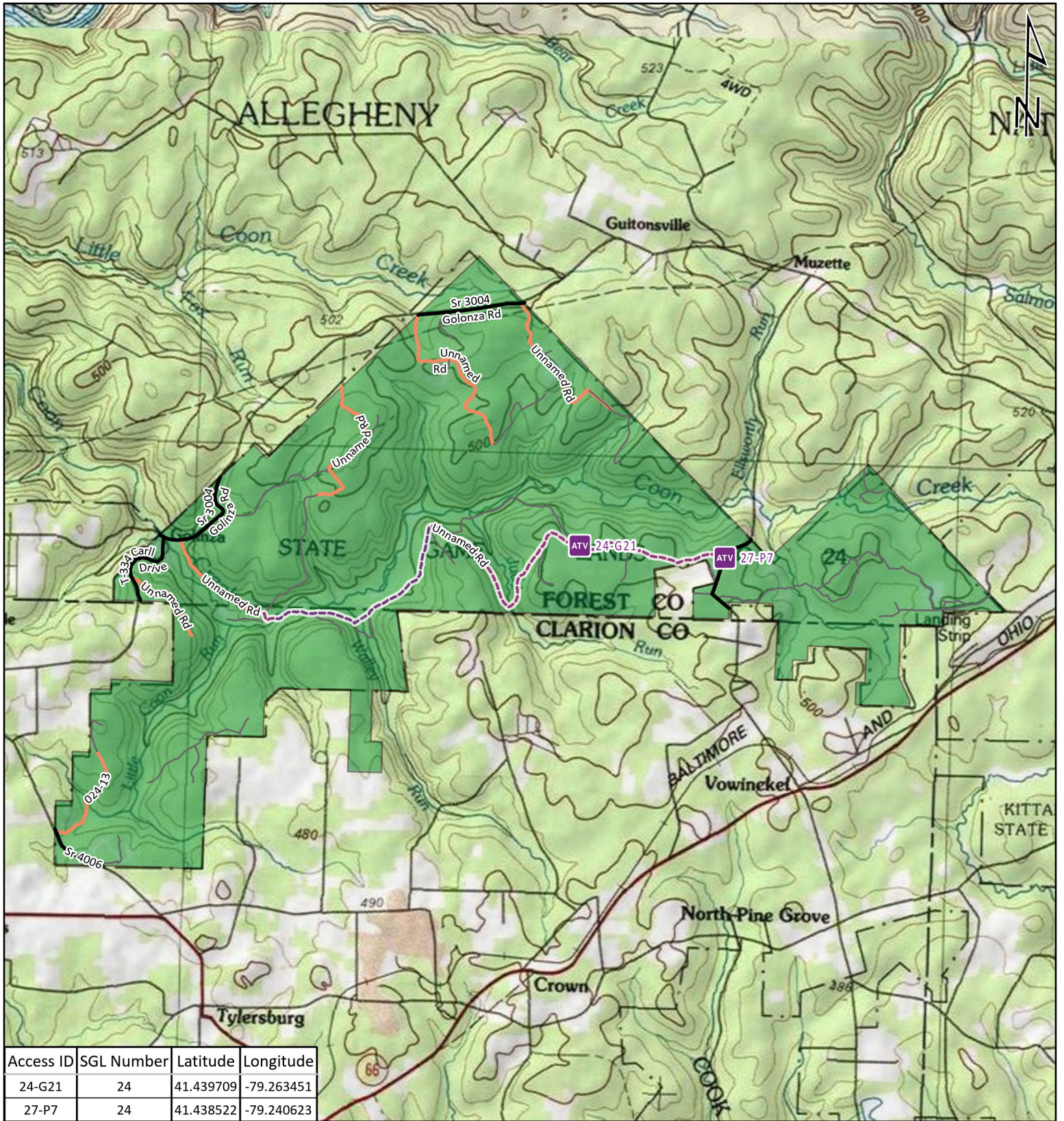


# Table of Contents

<b>Northwest Region Overview Map</b>	.....	NW-2
<b>State Game Lands 24</b>	Clarion and Forest counties .....	NW-3
<b>State Game Lands 39</b>	Venango County .....	NW-4
<b>State Game Lands 45</b>	Clarion and Venango counties.....	NW-5
<b>State Game Lands 74</b>	Clarion and Jefferson counties .....	NW-6
<b>State Game Lands 86</b>	Warren County .....	NW-7
<b>State Game Lands 95</b>	Butler County.....	NW-8
<b>State Game Lands 122</b>	Crawford County .....	NW-9
<b>State Game Lands 143</b>	Warren County .....	NW-10
<b>State Game Lands 151</b>	Lawrence and Mercer counties.....	NW-11
<b>State Game Lands 154</b>	Erie County.....	NW-12
<b>State Game Lands 244</b>	Jefferson County.....	NW-13
<b>Shenango River Lake 2415</b>	Mercer County.....	NW-14

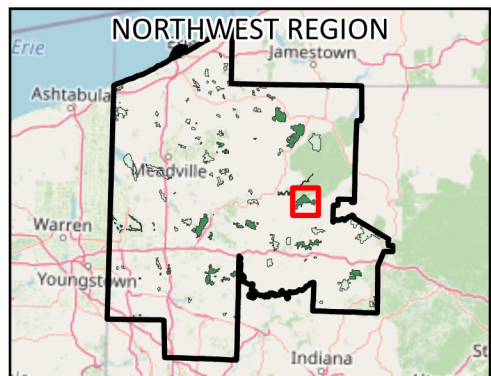






Access ID	SGL Number	Latitude	Longitude
24-G21	24	41.439709	-79.263451
27-P7	24	41.438522	-79.240623

-  ATV Access Trail Start
-  State Game Land Boundary
- Game Lands Roads**
-  Roads Open to Vehicle Traffic
-  Roads Seasonally Open to Vehicle Traffic
-  Roads Closed to Vehicle Traffic
-  ATV Access with Permit

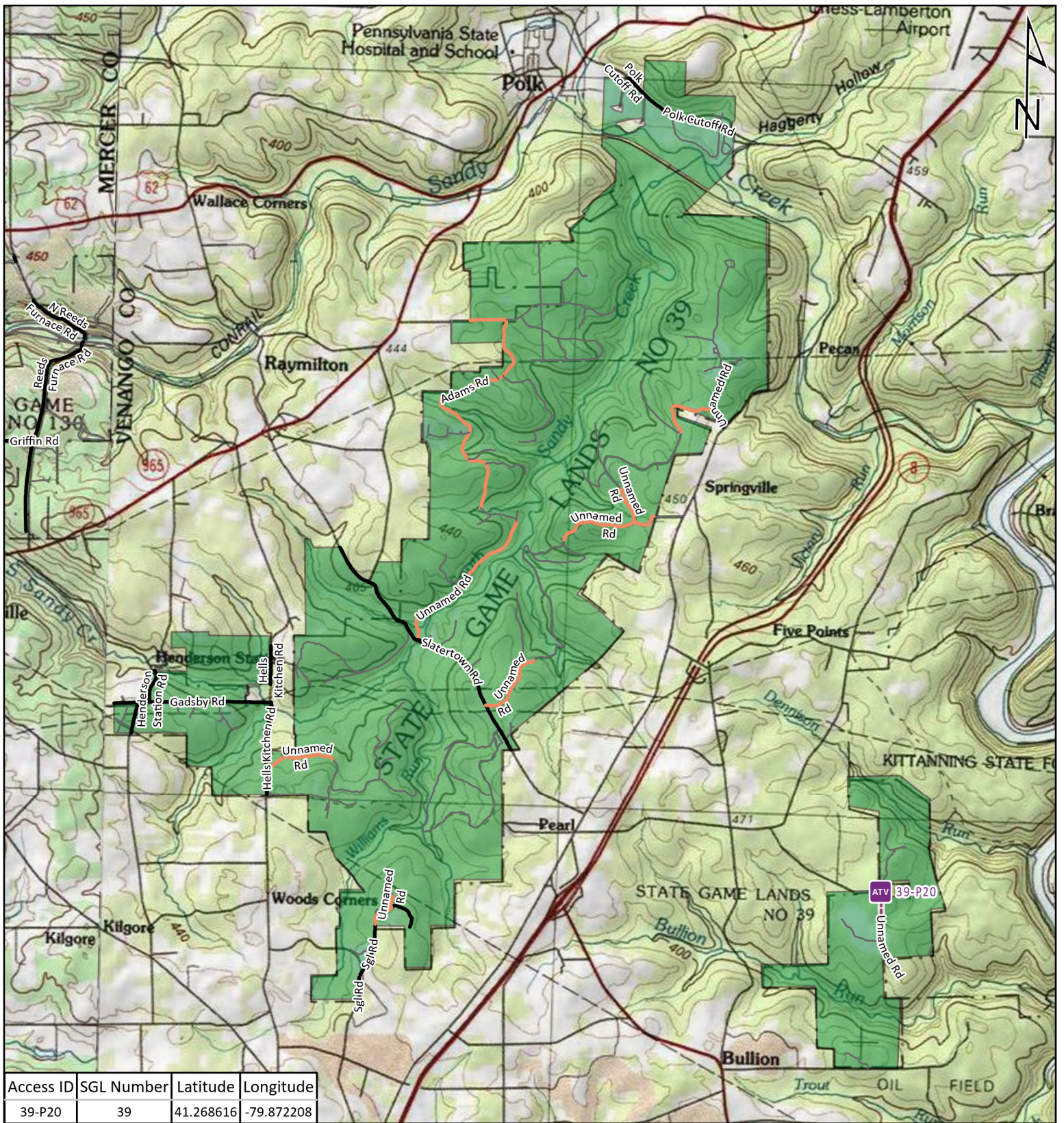







## STATE GAME LAND 24



It is unlawful to ride ATV's on state game lands, except on designated roads open for persons issued a Disabled Person Permit, and who have a valid registration from the Department of Conservation & Natural Resources.





-  ATV Access Trail Start
-  State Game Land Boundary
- Game Lands Roads
  -  Roads Open to Vehicle Traffic
  -  Roads Seasonally Open to Vehicle Traffic
  -  Roads Closed to Vehicle Traffic
  -  ATV Access with Permit

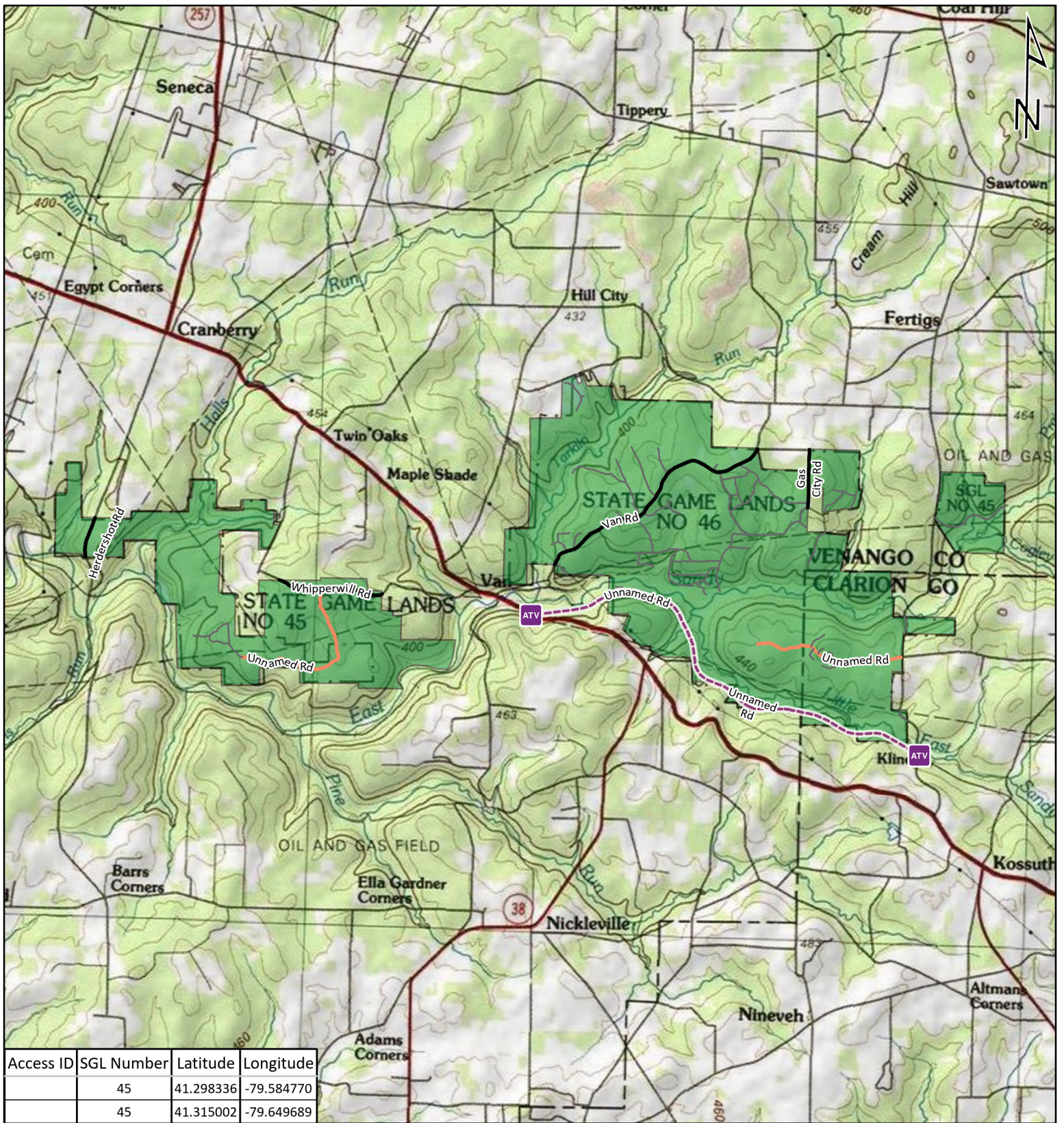






## STATE GAME LAND 39



It is unlawful to ride ATV's on state game lands, except on designated roads open for persons issued a Disabled Person Permit, and who have a valid registration from the Department of Conservation & Natural Resources.





-  ATV Access Trail Start
-  State Game Land Boundary
- Game Lands Roads
-  Roads Open to Vehicle Traffic
-  Roads Seasonally Open to Vehicle Traffic
-  Roads Closed to Vehicle Traffic
-  ATV Access with Permit

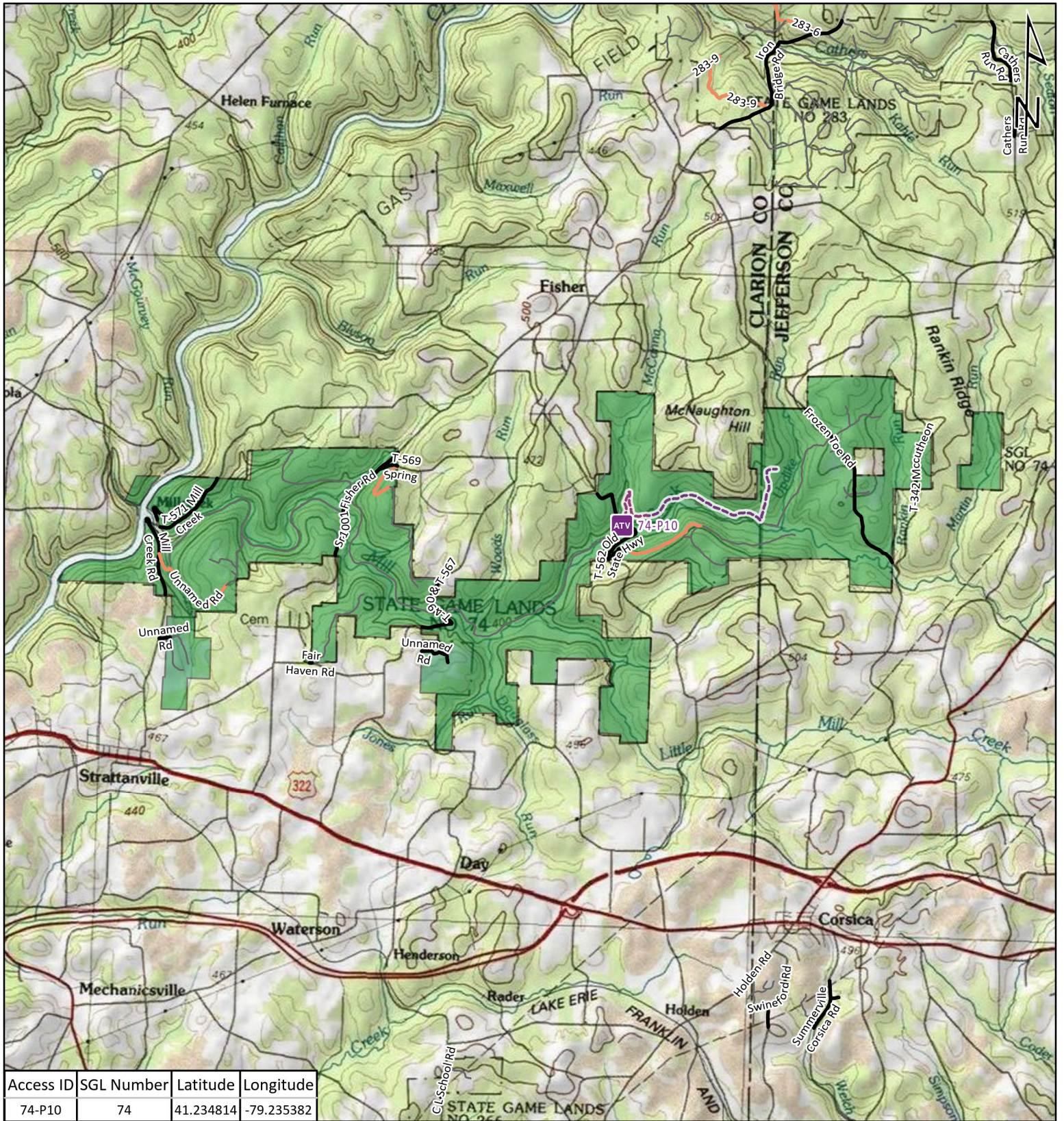


## STATE GAME LAND 45



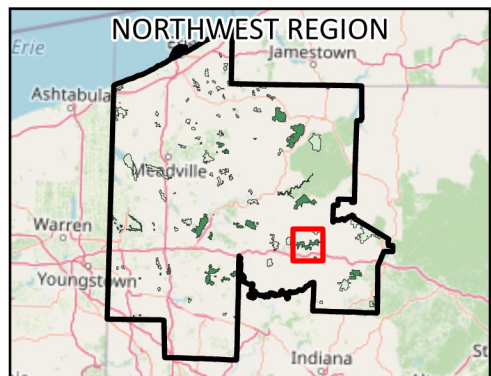
It is unlawful to ride ATV's on state game lands, except on designated roads open for persons issued a Disabled Person Permit, and who have a valid registration from the Department of Conservation & Natural Resources.





Access ID	SGL Number	Latitude	Longitude
74-P10	74	41.234814	-79.235382

-  ATV Access Trail Start
-  State Game Land Boundary
- Game Lands Roads**
-  Roads Open to Vehicle Traffic
-  Roads Seasonally Open to Vehicle Traffic
-  Roads Closed to Vehicle Traffic
-  ATV Access with Permit

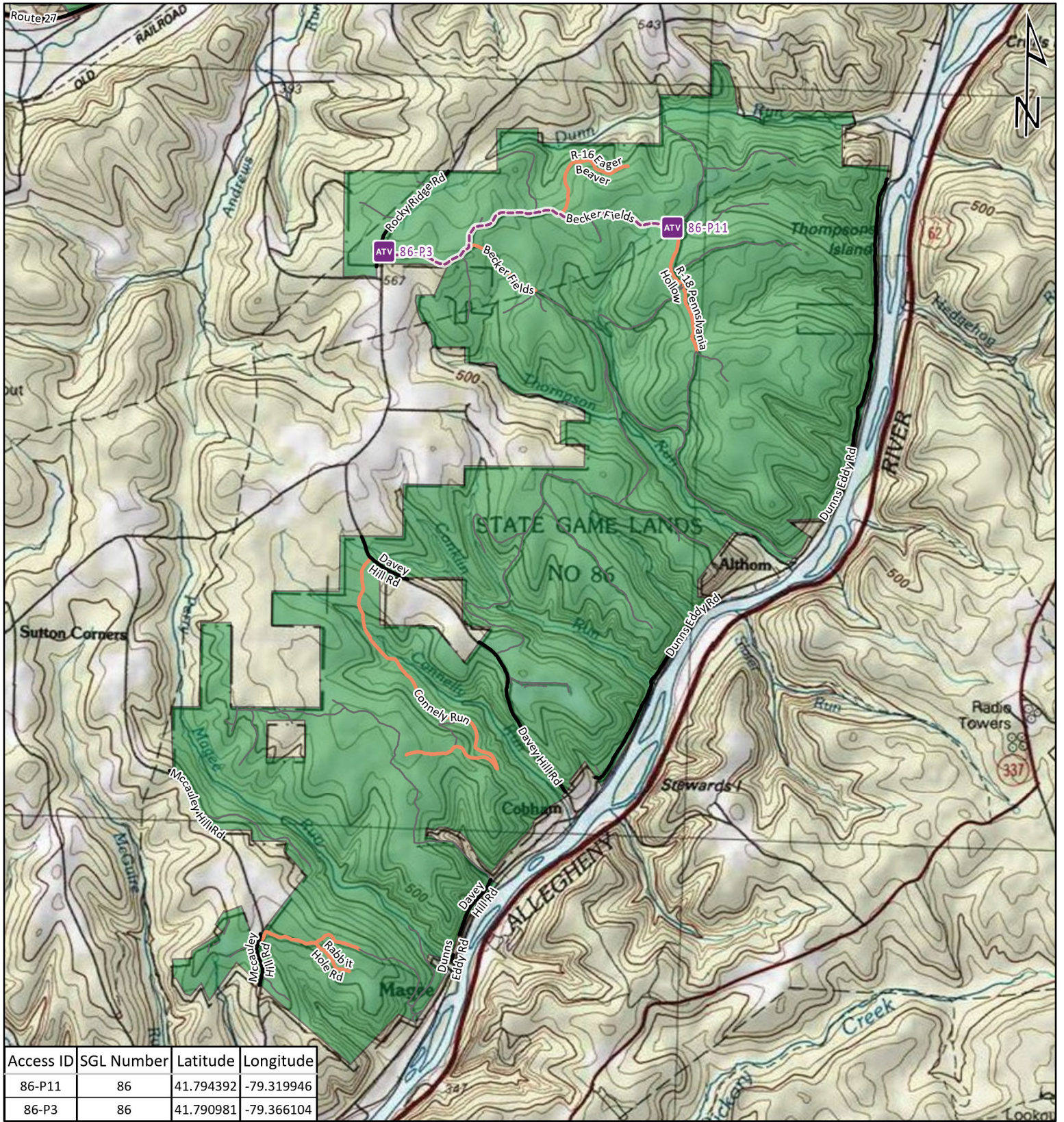


## STATE GAME LAND 74



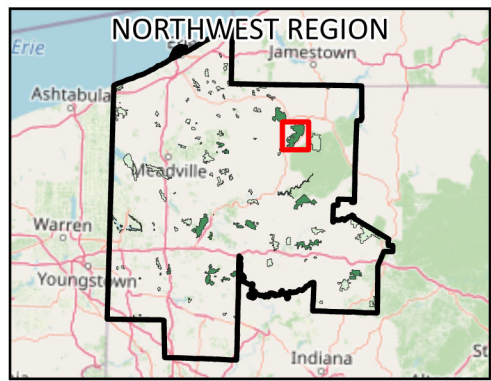
It is unlawful to ride ATV's on state game lands, except on designated roads open for persons issued a Disabled Person Permit, and who have a valid registration from the Department of Conservation & Natural Resources.





Access ID	SGL Number	Latitude	Longitude
86-P11	86	41.794392	-79.319946
86-P3	86	41.790981	-79.366104

-  ATV Access Trail Start
-  State Game Land Boundary
- Game Lands Roads
  -  Roads Open to Vehicle Traffic
  -  Roads Seasonally Open to Vehicle Traffic
  -  Roads Closed to Vehicle Traffic
  -  ATV Access with Permit



## STATE GAME LAND 86

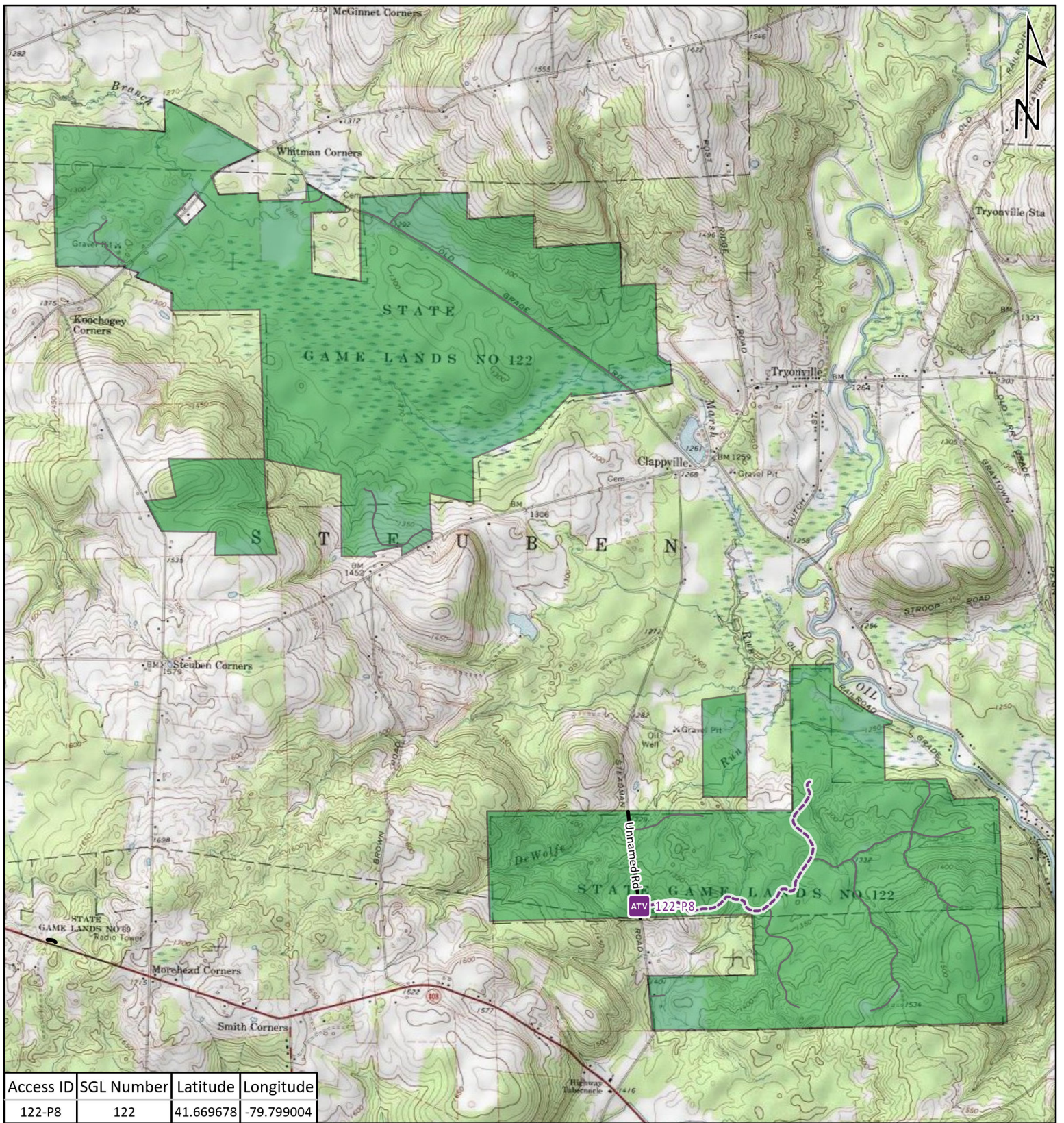


It is unlawful to ride ATV's on state game lands, except on designated roads open for persons issued a Disabled Person Permit, and who have a valid registration from the Department of Conservation & Natural Resources.



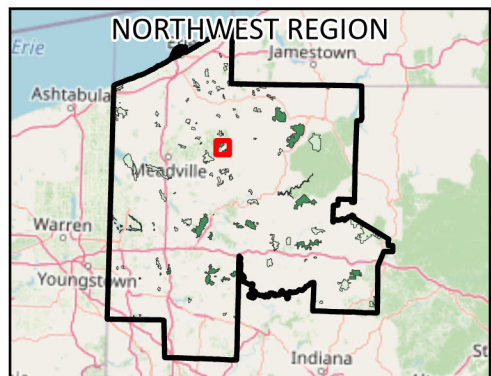






Access ID	SGL Number	Latitude	Longitude
122-P8	122	41.669678	-79.799004

-  ATV Access Trail Start
-  State Game Land Boundary
- Game Lands Roads
  -  Roads Open to Vehicle Traffic
  -  Roads Seasonally Open to Vehicle Traffic
  -  Roads Closed to Vehicle Traffic
  -  ATV Access with Permit

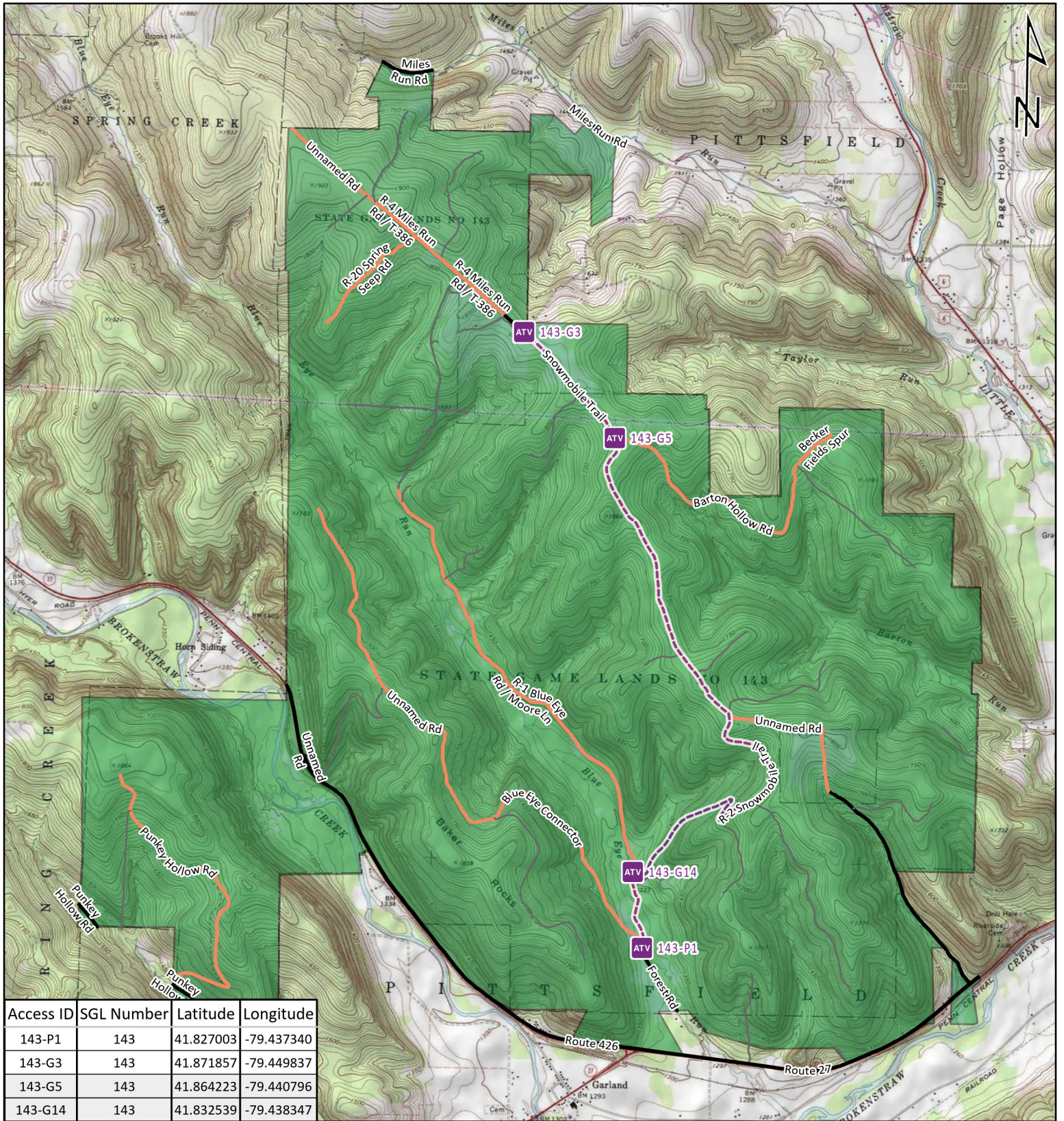


## STATE GAME LAND 122









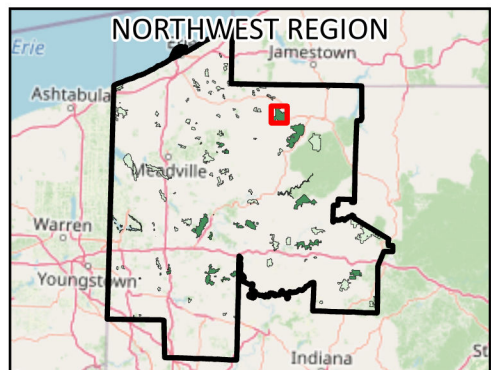
It is unlawful to ride ATV's on state game lands, except on designated roads open for persons issued a Disabled Person Permit, and who have a valid registration from the Department of Conservation & Natural Resources.





Access ID	SGL Number	Latitude	Longitude
143-P1	143	41.827003	-79.437340
143-G3	143	41.871857	-79.449837
143-G5	143	41.864223	-79.440796
143-G14	143	41.832539	-79.438347

-  ATV Access Trail Start
-  State Game Land Boundary
- Game Lands Roads
-  Roads Open to Vehicle Traffic
-  Roads Seasonally Open to Vehicle Traffic
-  Roads Closed to Vehicle Traffic
-  ATV Access with Permit

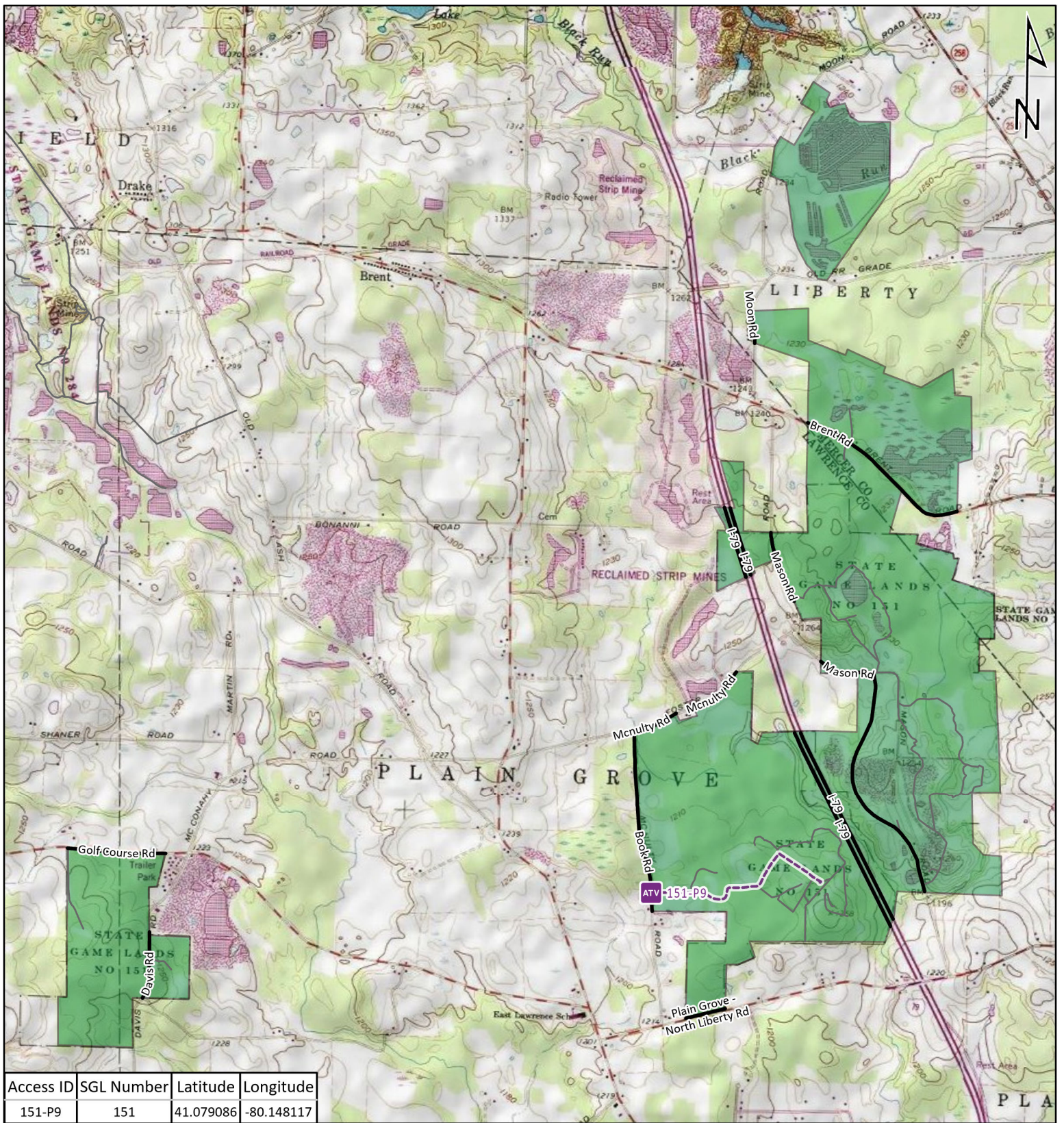


## STATE GAME LAND 143



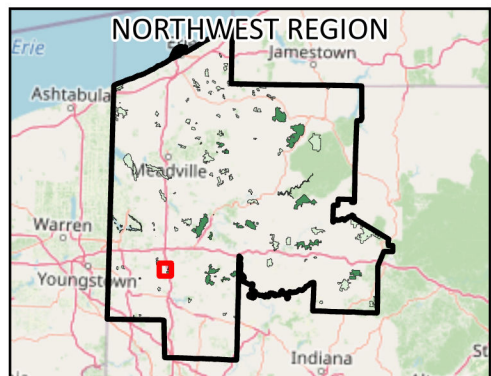
It is unlawful to ride ATVs on state game lands, except on designated roads open for persons issued a Disabled Person Permit, and who have a valid registration from the Department of Conservation & Natural Resources.



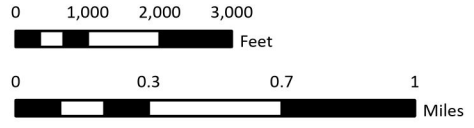


Access ID	SGL Number	Latitude	Longitude
151-P9	151	41.079086	-80.148117

- ATV Access Trail Start
- State Game Land Boundary
- Game Lands Roads**
- Roads Open to Vehicle Traffic
- Roads Seasonally Open to Vehicle Traffic
- Roads Closed to Vehicle Traffic
- ATV Access with Permit

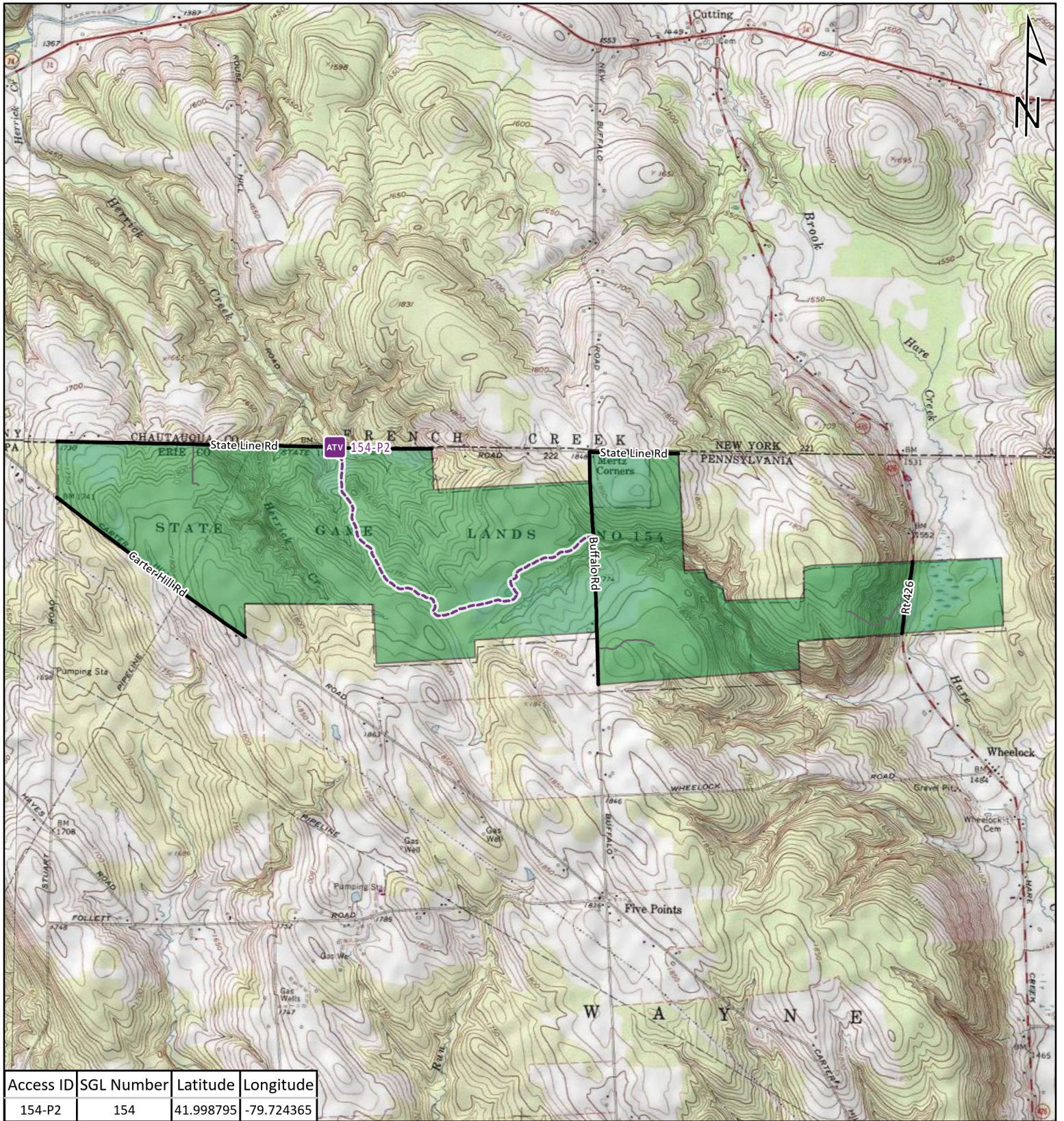


## STATE GAME LAND 151



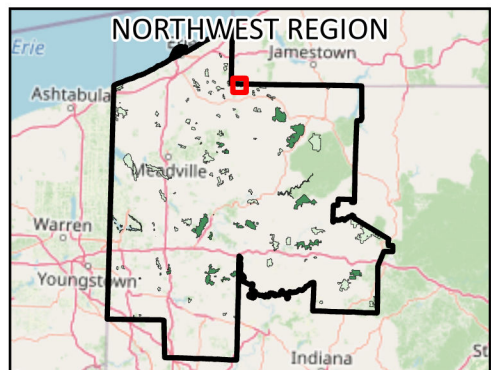
It is unlawful to ride ATV's on state game lands, except on designated roads open for persons issued a Disabled Person Permit, and who have a valid registration from the Department of Conservation & Natural Resources.





Access ID	SGL Number	Latitude	Longitude
154-P2	154	41.998795	-79.724365

-  ATV Access Trail Start
-  State Game Land Boundary
- Game Lands Roads**
-  Roads Open to Vehicle Traffic
-  Roads Seasonally Open to Vehicle Traffic
-  Roads Closed to Vehicle Traffic
-  ATV Access with Permit

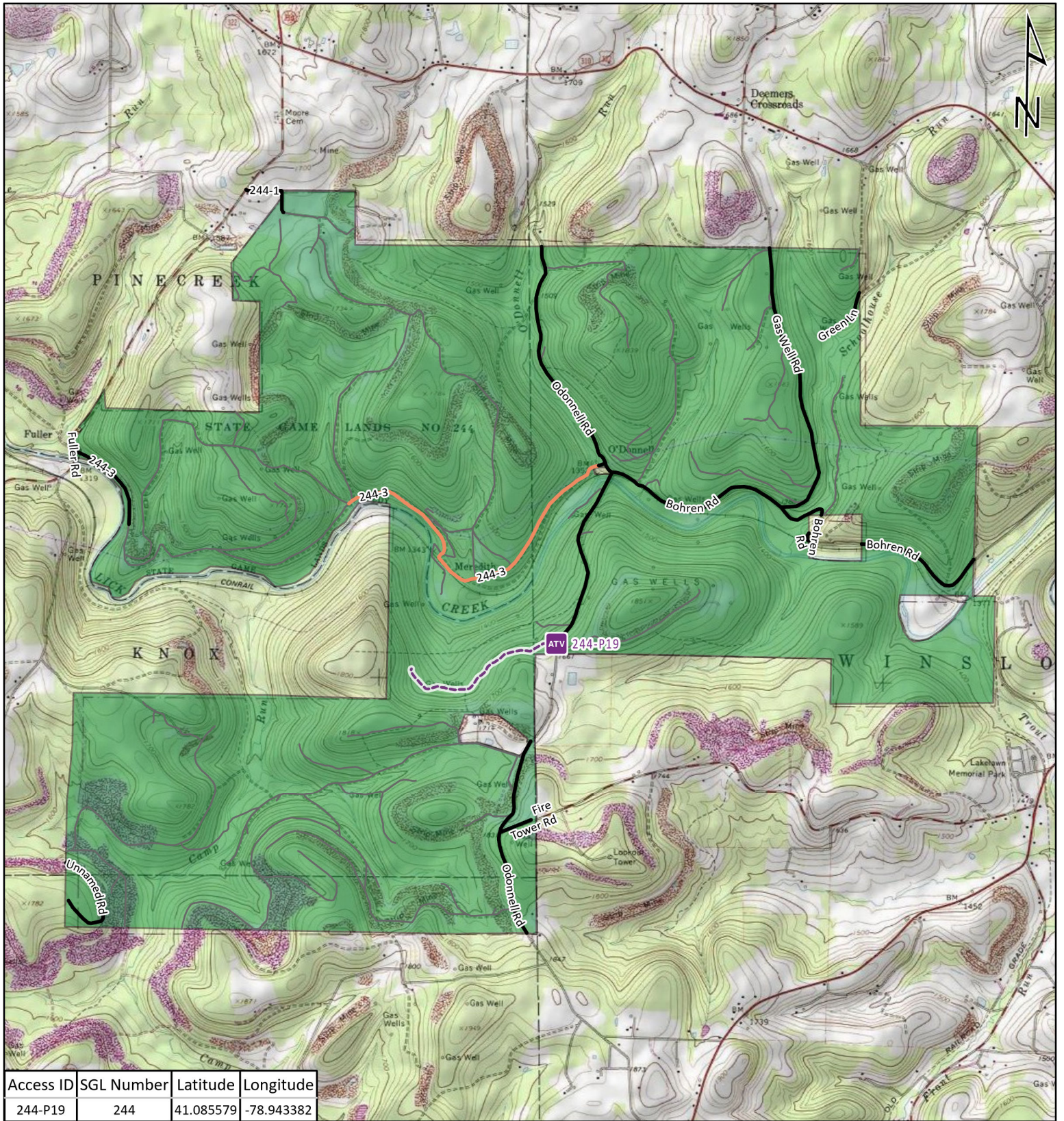


## STATE GAME LAND 154



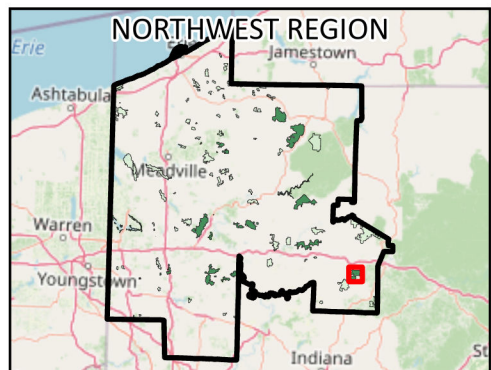
It is unlawful to ride ATV's on state game lands, except on designated roads open for persons issued a Disabled Person Permit, and who have a valid registration from the Department of Conservation & Natural Resources.





Access ID	SGL Number	Latitude	Longitude
244-P19	244	41.085579	-78.943382

-  ATV Access Trail Start
-  State Game Land Boundary
- Game Lands Roads**
-  Roads Open to Vehicle Traffic
-  Roads Seasonally Open to Vehicle Traffic
-  Roads Closed to Vehicle Traffic
-  ATV Access with Permit

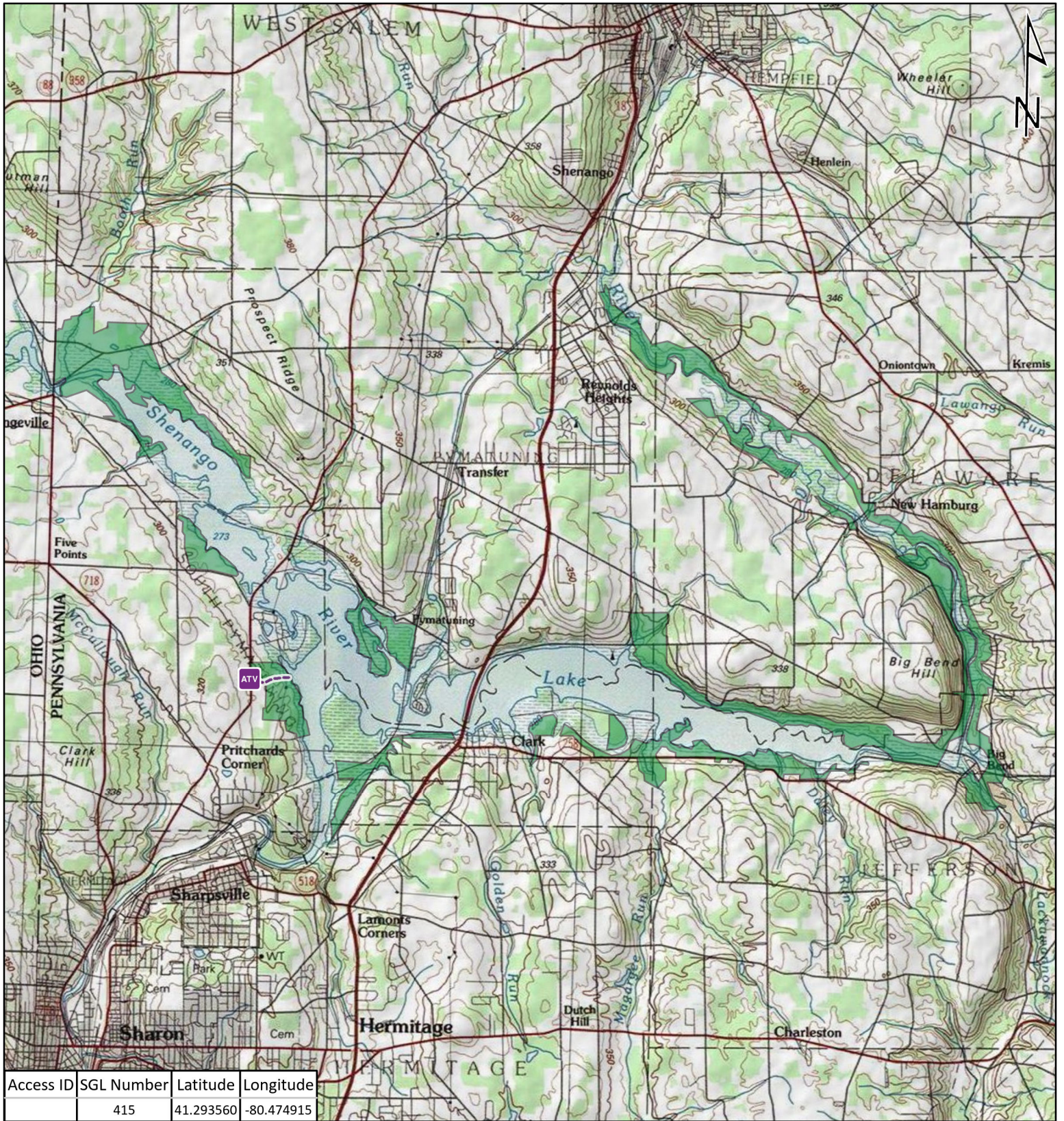


## STATE GAME LAND 244








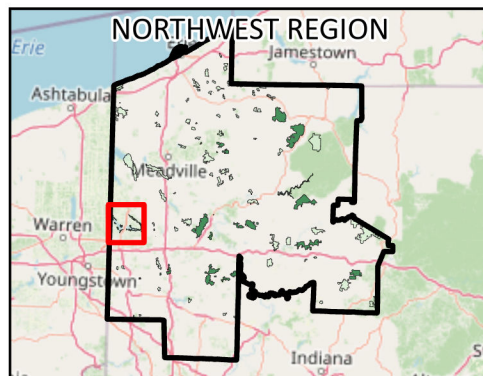
It is unlawful to ride ATV's on state game lands, except on designated roads open for persons issued a Disabled Person Permit, and who have a valid registration from the Department of Conservation & Natural Resources.





Access ID	SGL Number	Latitude	Longitude
	415	41.293560	-80.474915

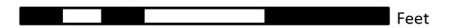
-  ATV Access Trail Start
-  State Game Land Boundary
- Game Lands Roads
  -  Roads Open to Vehicle Traffic
  -  Roads Seasonally Open to Vehicle Traffic
  -  Roads Closed to Vehicle Traffic
  -  ATV Access with Permit



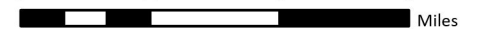
## STATE GAME LAND 2415



0 5,000 10,000 15,000

 Feet

0 1 2 3

 Miles

It is unlawful to ride ATV's on state game lands, except on designated roads open for persons issued a Disabled Person Permit, and who have a valid registration from the Department of Conservation & Natural Resources.