



PENNSYLVANIA GAME COMMISSION

SOUTHCENTRAL REGION

8627 WILLIAM PENN HIGHWAY HUNTINGDON, PA 16652 | 1-833-742-4868 (PGC HUNT) 1-833-742-9453 (PGC WILD)

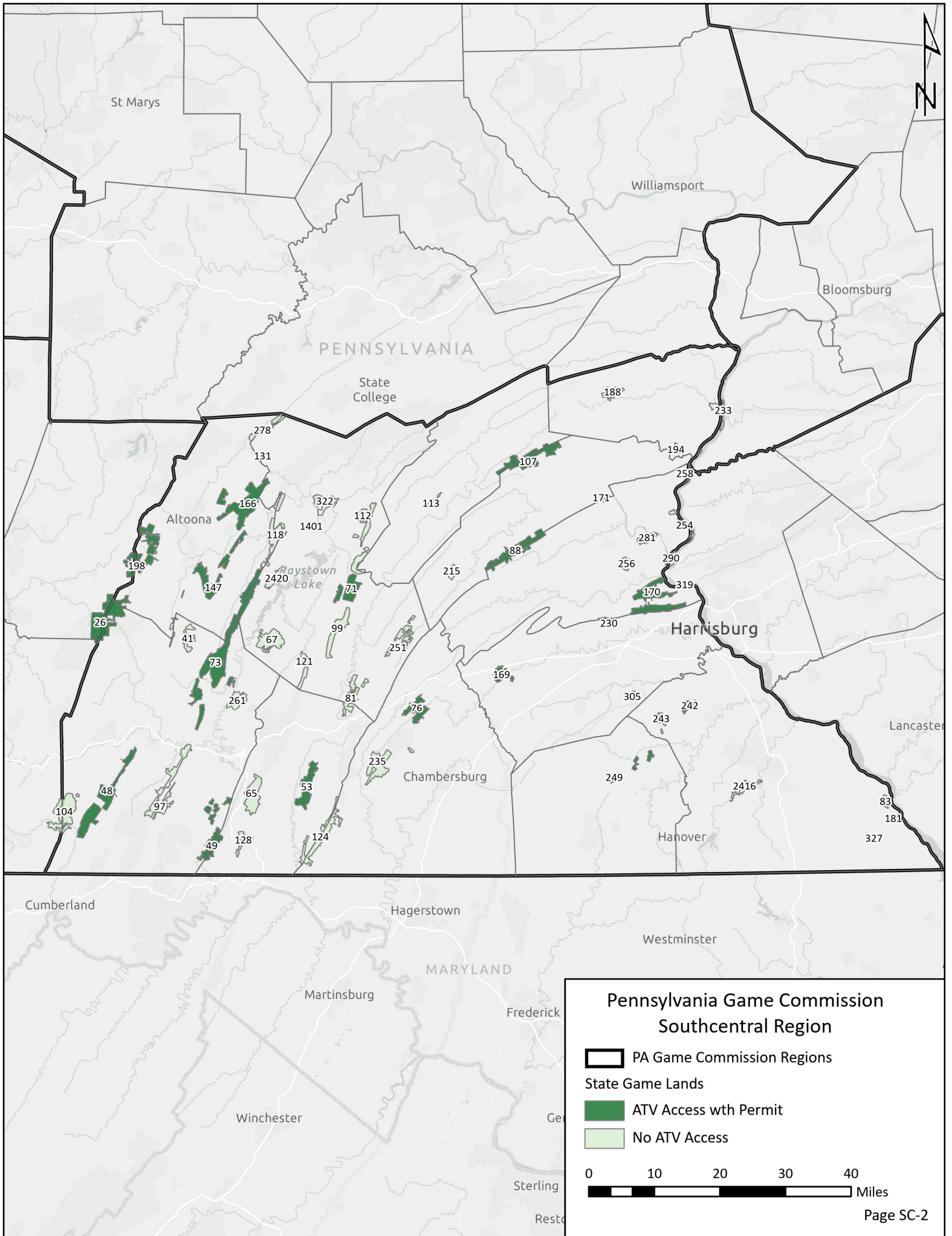
Southcentral Region



It is unlawful to ride ATVs on state game lands, except on designated roads open for persons issued a Disabled Persons Permit, and who have a valid registration from the Department of Conservation & Natural Resources.

Table of Contents

Southcentral Region Overview Map	SC-2
State Game Lands 26 Bedford, Blair, Cambria, and Somerset counties	SC-3
State Game Lands 48 Bedford County	SC-4
State Game Lands 49 Bedford and Fulton counties	SC-5
State Game Lands 53 Fulton County	SC-6
State Game Lands 71 Huntingdon County	SC-7
State Game Lands 73 Bedford, Blair, and Huntingdon counties	SC-8
State Game Lands 76 Franklin County	SC-9
State Game Lands 88 Juniata and Perry counties	SC-10
State Game Lands 107 Juniata and Mifflin counties	SC-11
State Game Lands 147 Blair County	SC-12
State Game Lands 166 Blair and Huntingdon county.....	SC-13
State Game Lands 169 Cumberland County	SC-14
State Game Lands 170 Cumberland and Perry counties.....	SC-15
State Game Lands 198 Blair and Cambria County	SC-16
State Game Lands 230 Cumberland and Perry counties.....	SC-17
State Game Lands 242 York County	SC-18
State Game Lands 249 Adams County	SC-19



St Marys

Williamsport

Bloomsburg

PENNSYLVANIA

State College

188

233

278

131

107

194

Altoona

166

322

1401

112

113

118

2420

147

73

261

41

67

99

121

71

251

81

76

235

235

53

124

128

49

124

215

171

281

256

290

170

319

230

305

243

242

169

249

2416

249

243

242

2416

249

243

242

2416

249

243

242

2416

249

243

242

2416

249

243

242

2416

249

243

242

2416

Harrisburg

Lancaster

Cumberland

Hagerstown

Westminster

MARYLAND

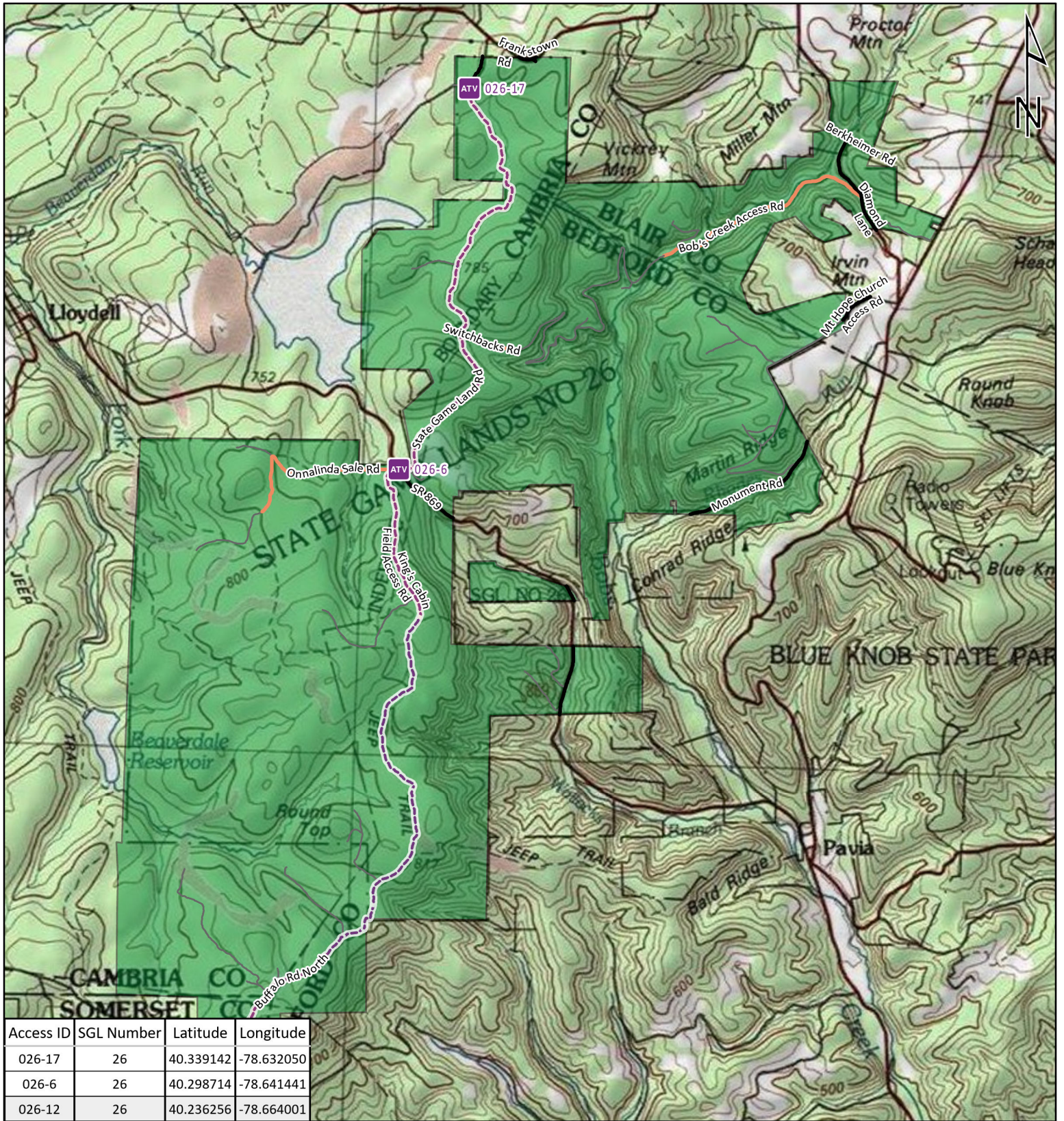
Martinsburg

Frederick

Winchester

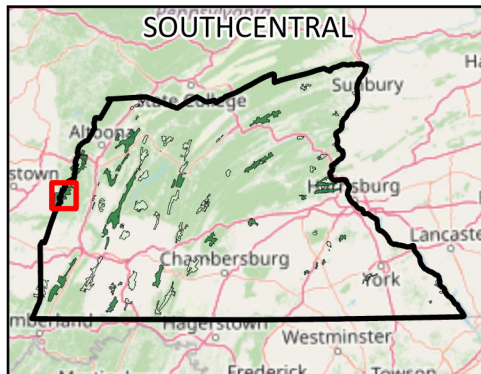
Sterling

Reston

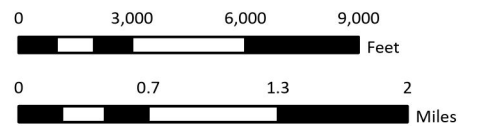


Access ID	SGL Number	Latitude	Longitude
026-17	26	40.339142	-78.632050
026-6	26	40.298714	-78.641441
026-12	26	40.236256	-78.664001

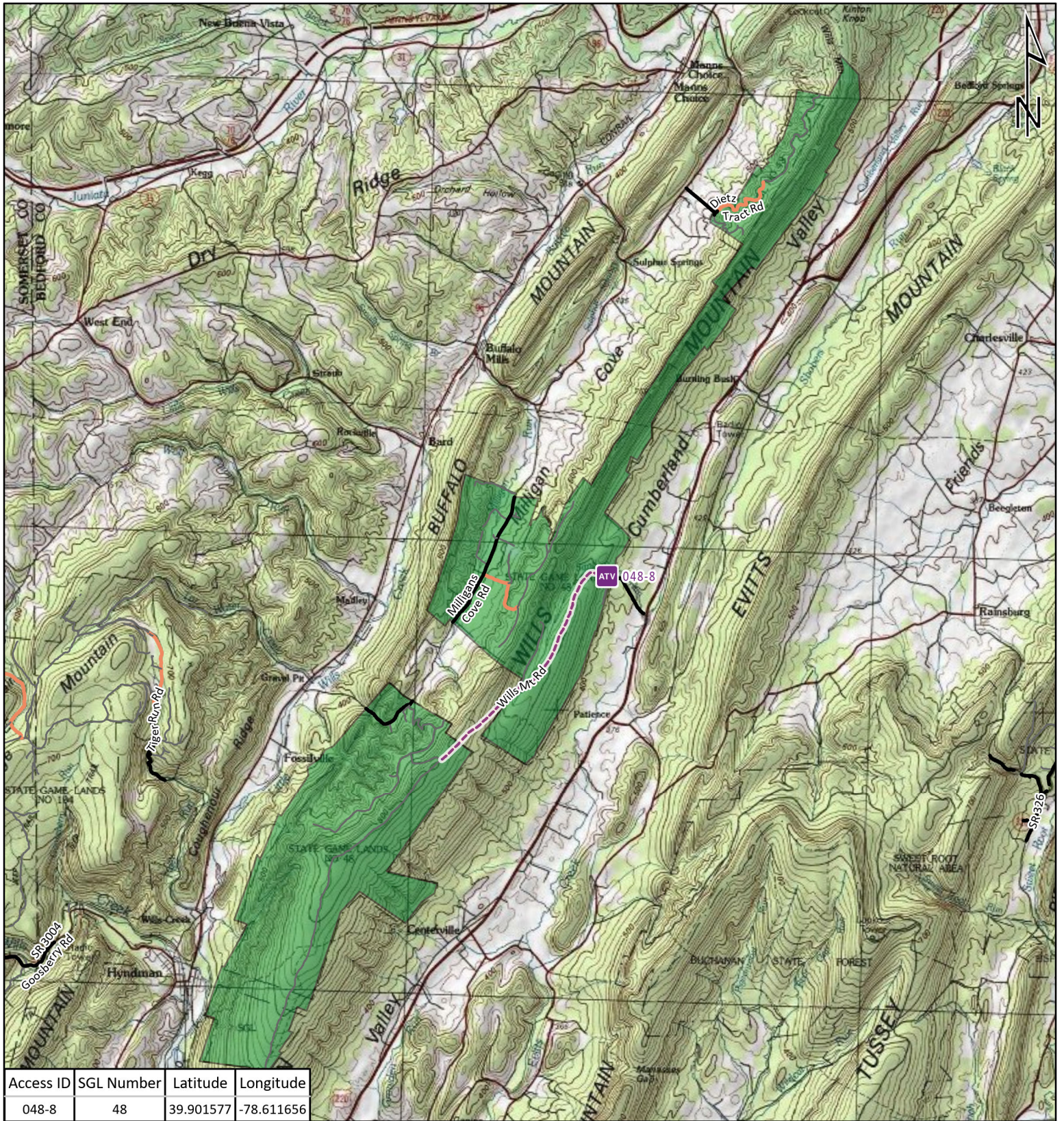
-  ATV Access Trail Start
-  State Game Land Boundary
- Game Land Roads
 -  Roads Open to Vehicle Traffic
 -  Roads Seasonally Open to Vehicle Traffic
 -  Roads Closed to Vehicle Traffic
 -  ATV Access with Permit



STATE GAME LAND 26

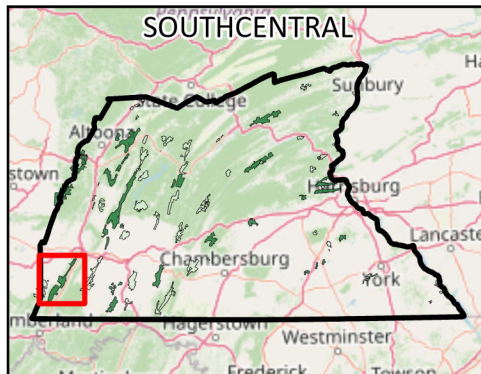


It is unlawful to ride ATV's on state game lands, except on designated roads open for persons issued a Disabled Person Permit, and who have a valid registration from the Department of Conservation & Natural Resources.

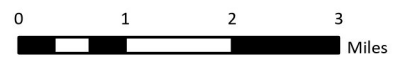
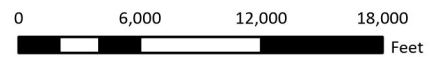


Access ID	SGL Number	Latitude	Longitude
048-8	48	39.901577	-78.611656

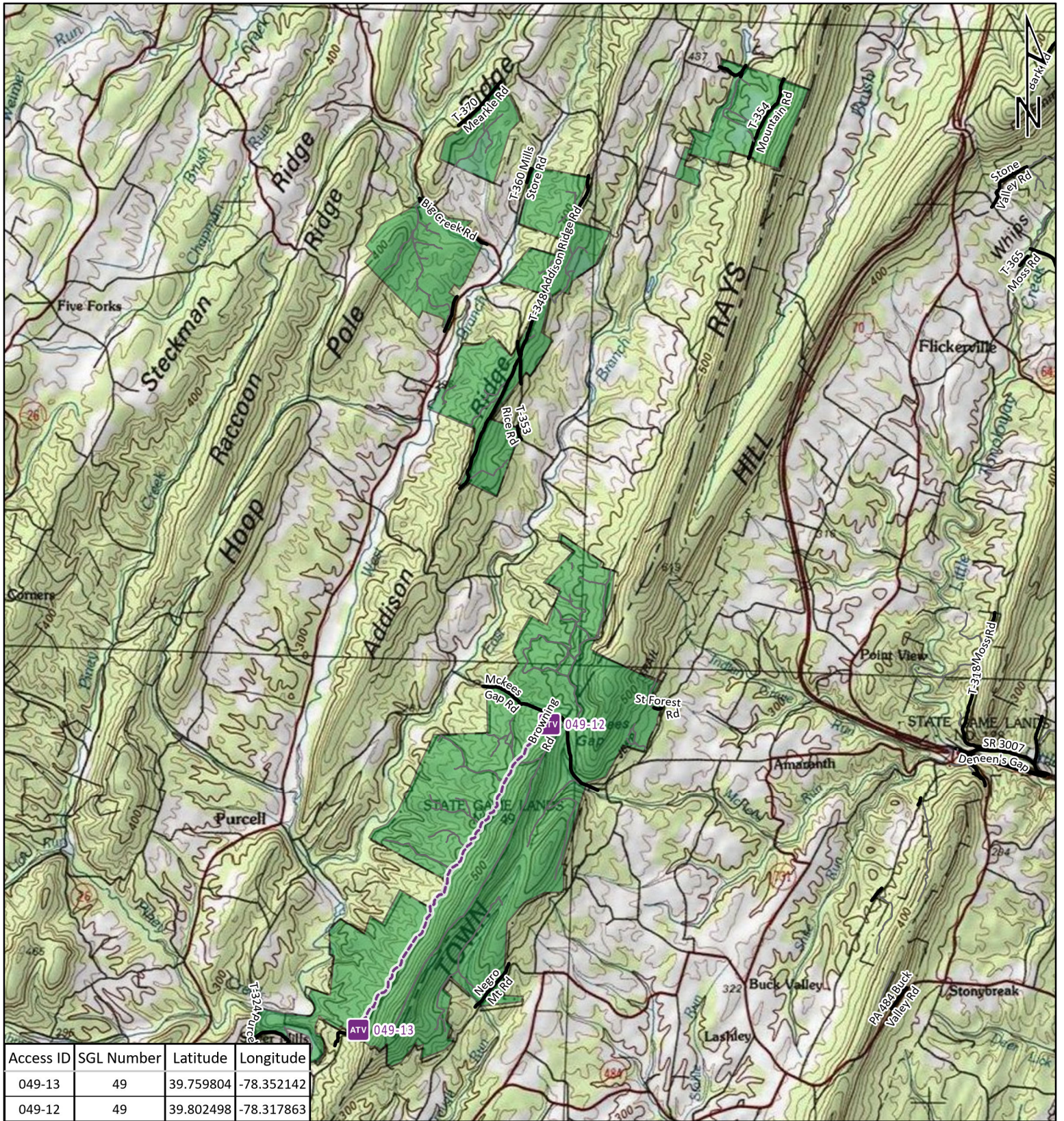
-  ATV Access Trail Start
-  State Game Land Boundary
- Game Land Roads
-  Roads Open to Vehicle Traffic
-  Roads Seasonally Open to Vehicle Traffic
-  Roads Closed to Vehicle Traffic
-  ATV Access with Permit



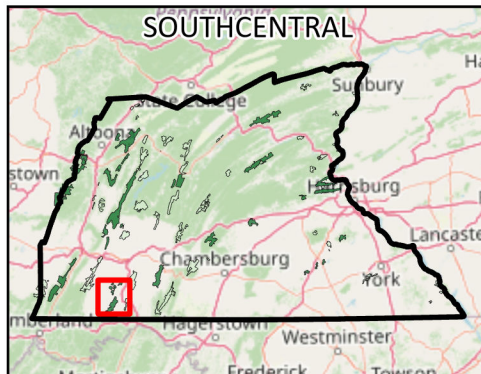
STATE GAME LAND 48



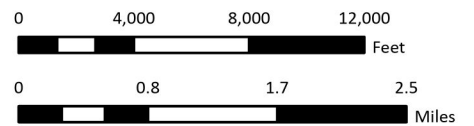
It is unlawful to ride ATV's on state game lands, except on designated roads open for persons issued a Disabled Person Permit, and who have a valid registration from the Department of Conservation & Natural Resources.



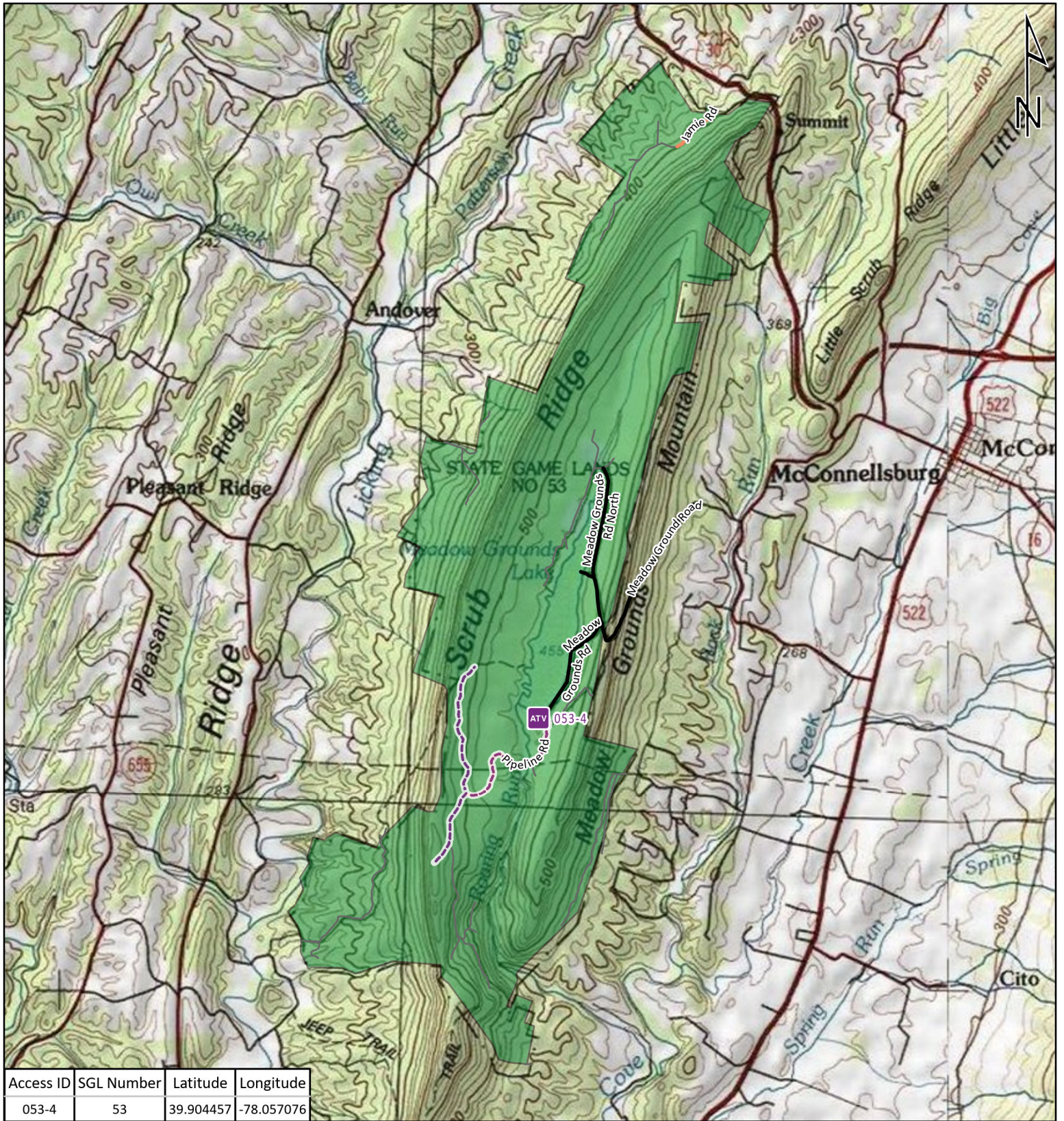
-  ATV Access Trail Start
-  State Game Land Boundary
- Game Land Roads
 -  Roads Open to Vehicle Traffic
 -  Roads Seasonally Open to Vehicle Traffic
 -  Roads Closed to Vehicle Traffic
 -  ATV Access with Permit



STATE GAME LAND 49

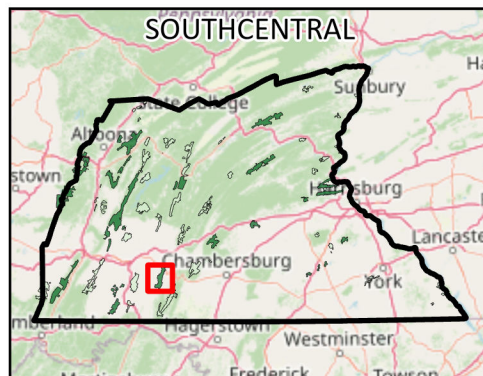


It is unlawful to ride ATV's on state game lands, except on designated roads open for persons issued a Disabled Person Permit, and who have a valid registration from the Department of Conservation & Natural Resources.

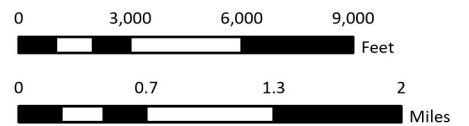


Access ID	SGL Number	Latitude	Longitude
053-4	53	39.904457	-78.057076

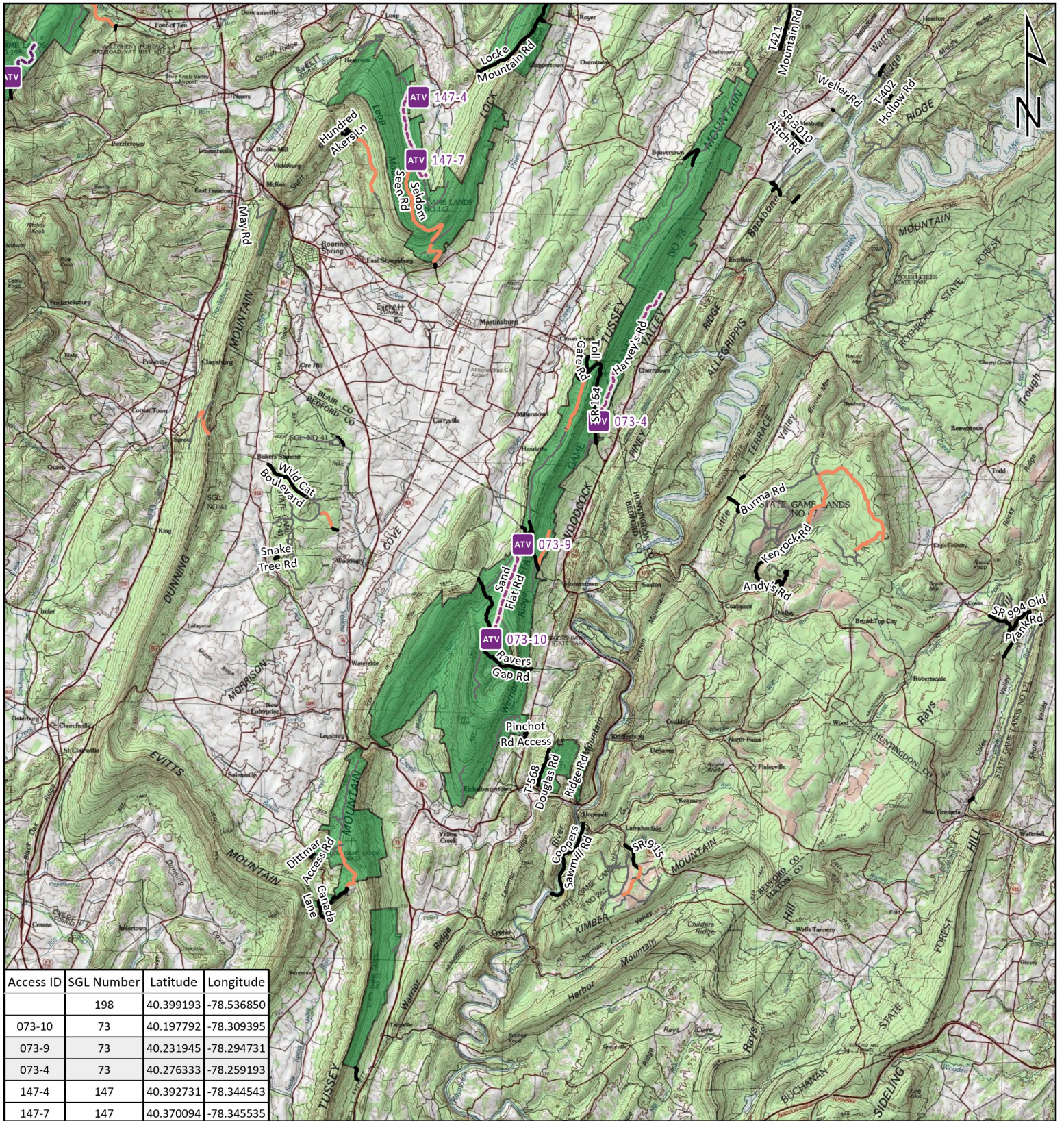
-  ATV Access Trail Start
-  State Game Land Boundary
- Game Land Roads**
-  Roads Open to Vehicle Traffic
-  Roads Seasonally Open to Vehicle Traffic
-  Roads Closed to Vehicle Traffic
-  ATV Access with Permit



STATE GAME LAND 53

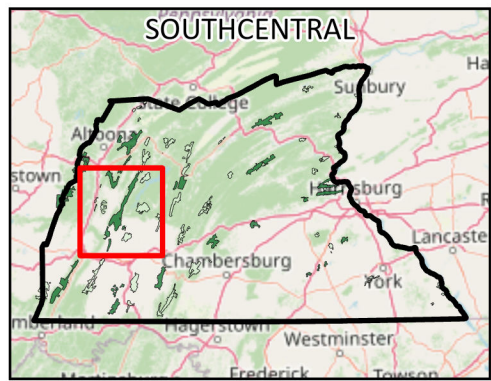


It is unlawful to ride ATV's on state game lands, except on designated roads open for persons issued a Disabled Person Permit, and who have a valid registration from the Department of Conservation & Natural Resources.



Access ID	SGL Number	Latitude	Longitude
	198	40.399193	-78.536850
073-10	73	40.197792	-78.309395
073-9	73	40.231945	-78.294731
073-4	73	40.276333	-78.259193
147-4	147	40.392731	-78.344543
147-7	147	40.370094	-78.345535

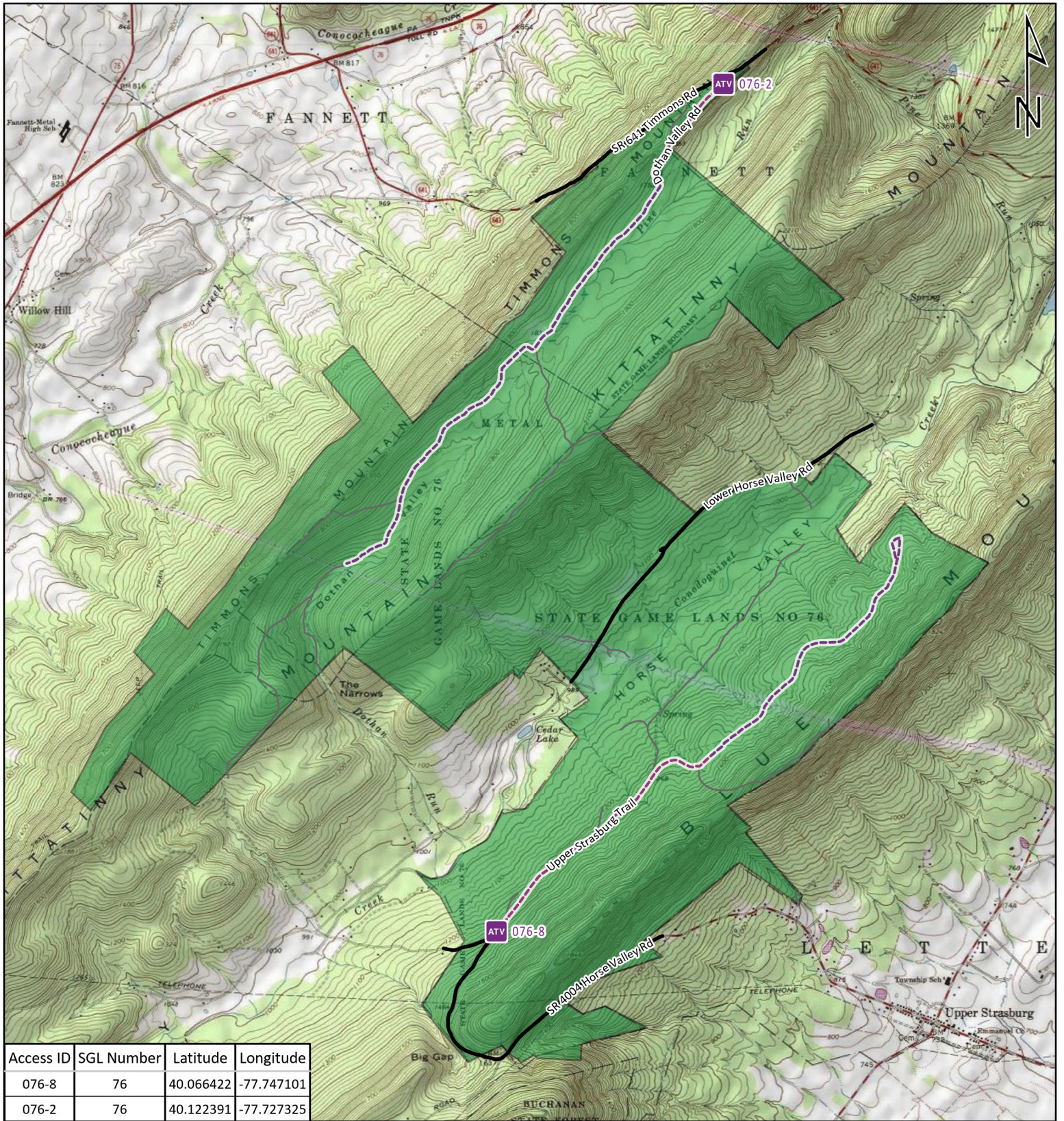
-  ATV Access Trail Start
-  State Game Land Boundary
- Game Land Roads
-  Roads Open to Vehicle Traffic
-  Roads Seasonally Open to Vehicle Traffic
-  Roads Closed to Vehicle Traffic
-  ATV Access with Permit



STATE GAME LAND 73



It is unlawful to ride ATV's on state game lands, except on designated roads open for persons issued a Disabled Person Permit, and who have a valid registration from the Department of Conservation & Natural Resources.



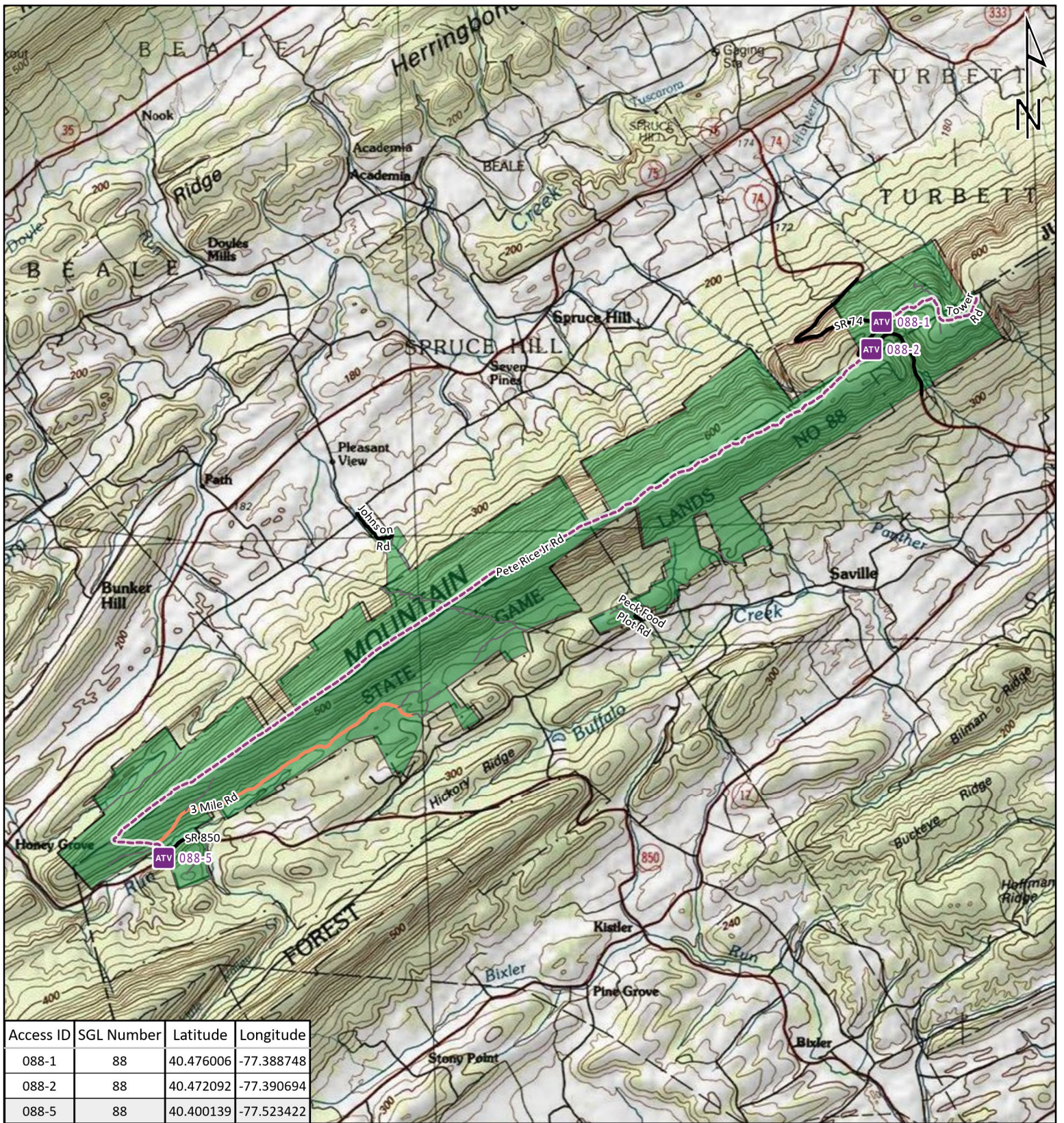
-  ATV Access Trail Start
-  State Game Land Boundary
- Game Land Roads**
-  Roads Open to Vehicle Traffic
-  Roads Seasonally Open to Vehicle Traffic
-  Roads Closed to Vehicle Traffic
-  ATV Access with Permit



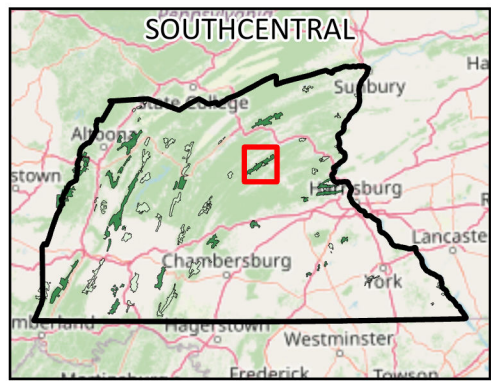
STATE GAME LAND 76



It is unlawful to ride ATV's on state game lands, except on designated roads open for persons issued a Disabled Person Permit, and who have a valid registration from the Department of Conservation & Natural Resources.



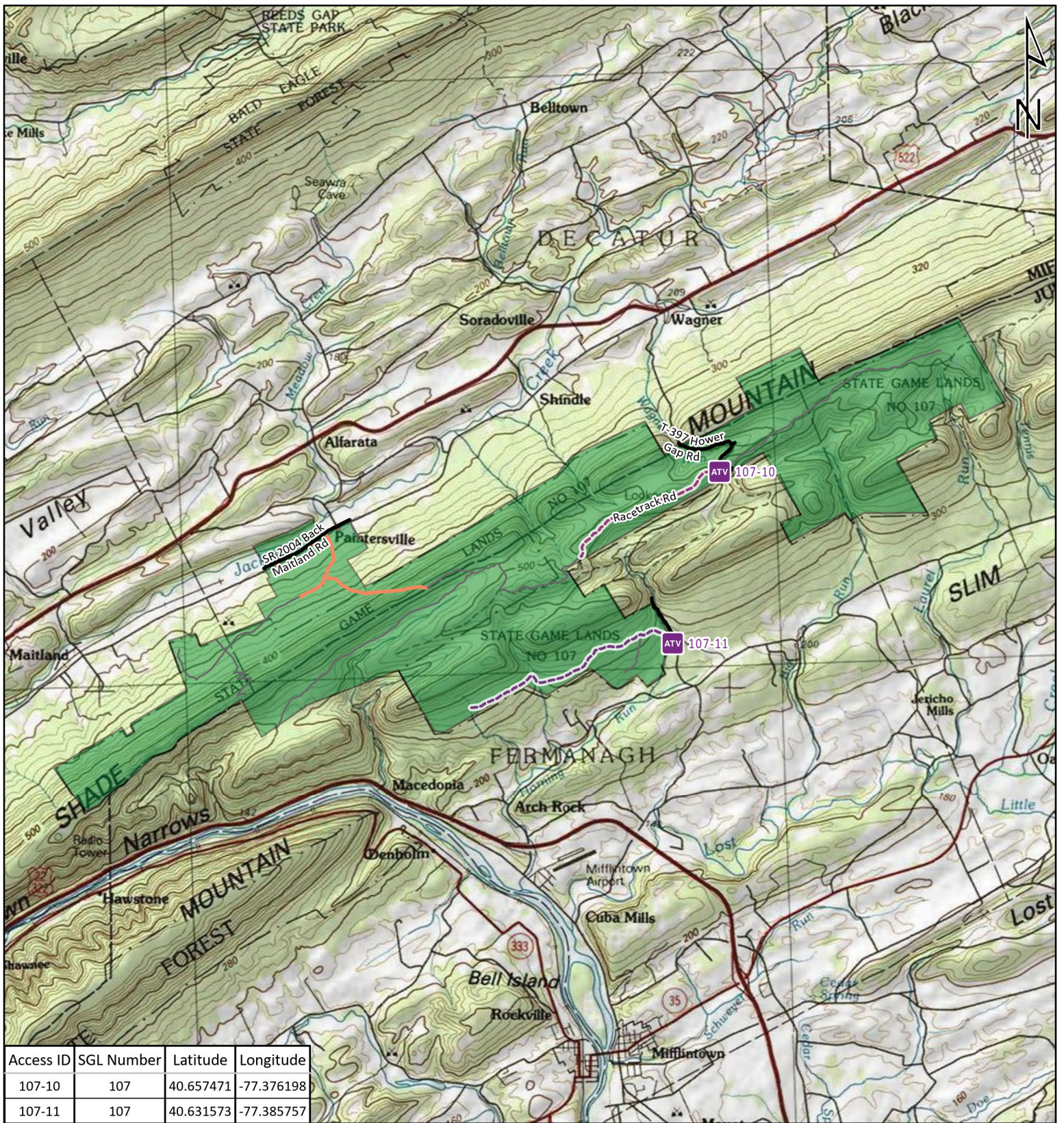
-  ATV Access Trail Start
-  State Game Land Boundary
- Game Land Roads
 -  Roads Open to Vehicle Traffic
 -  Roads Seasonally Open to Vehicle Traffic
 -  Roads Closed to Vehicle Traffic
 -  ATV Access with Permit



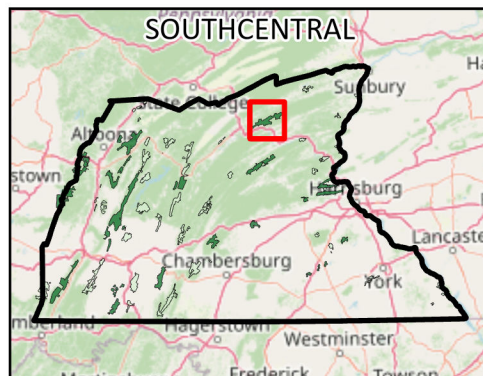
STATE GAME LAND 88



It is unlawful to ride ATV's on state game lands, except on designated roads open for persons issued a Disabled Person Permit, and who have a valid registration from the Department of Conservation & Natural Resources.



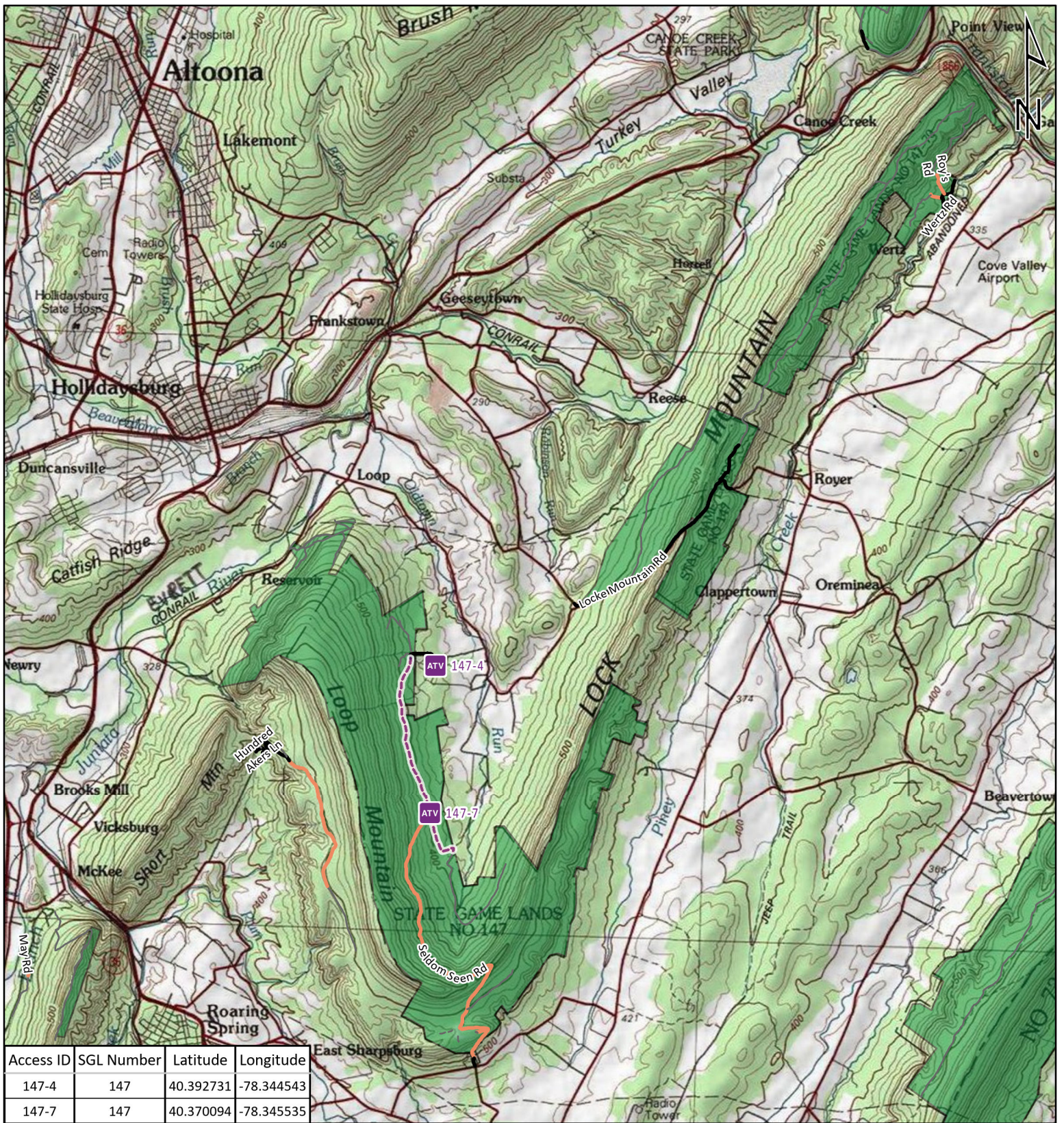
-  ATV Access Trail Start
-  State Game Land Boundary
- Game Land Roads
 -  Roads Open to Vehicle Traffic
 -  Roads Seasonally Open to Vehicle Traffic
 -  Roads Closed to Vehicle Traffic
 -  ATV Access with Permit



STATE GAME LAND 107

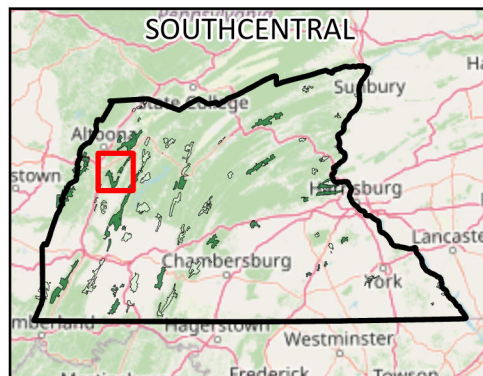


It is unlawful to ride ATV's on state game lands, except on designated roads open for persons issued a Disabled Person Permit, and who have a valid registration from the Department of Conservation & Natural Resources.



Access ID	SGL Number	Latitude	Longitude
147-4	147	40.392731	-78.344543
147-7	147	40.370094	-78.345535

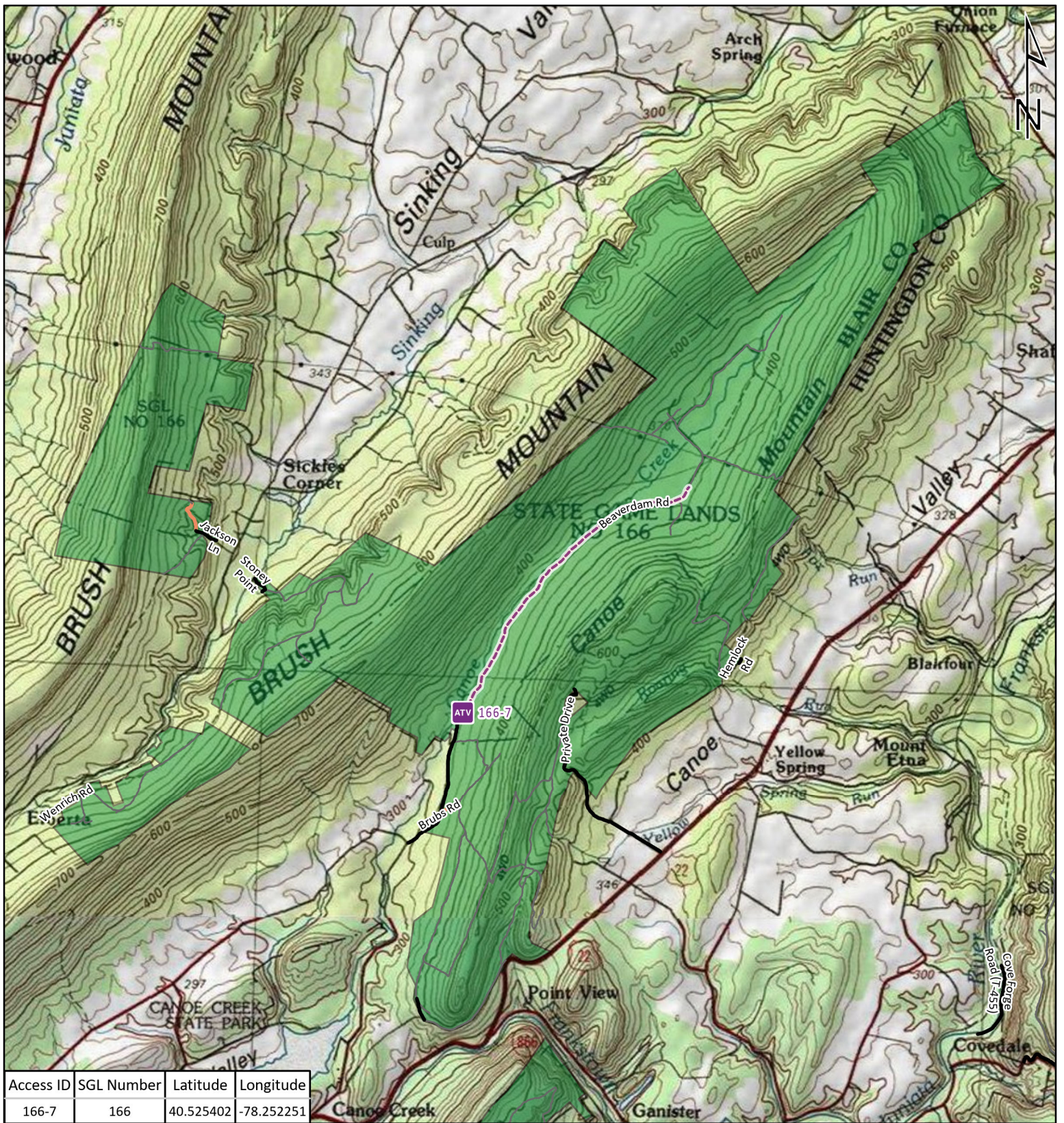
-  ATV Access Trail Start
-  State Game Land Boundary
- Game Land Roads
-  Roads Open to Vehicle Traffic
-  Roads Seasonally Open to Vehicle Traffic
-  Roads Closed to Vehicle Traffic
-  ATV Access with Permit



STATE GAME LAND 147



It is unlawful to ride ATV's on state game lands, except on designated roads open for persons issued a Disabled Person Permit, and who have a valid registration from the Department of Conservation & Natural Resources.



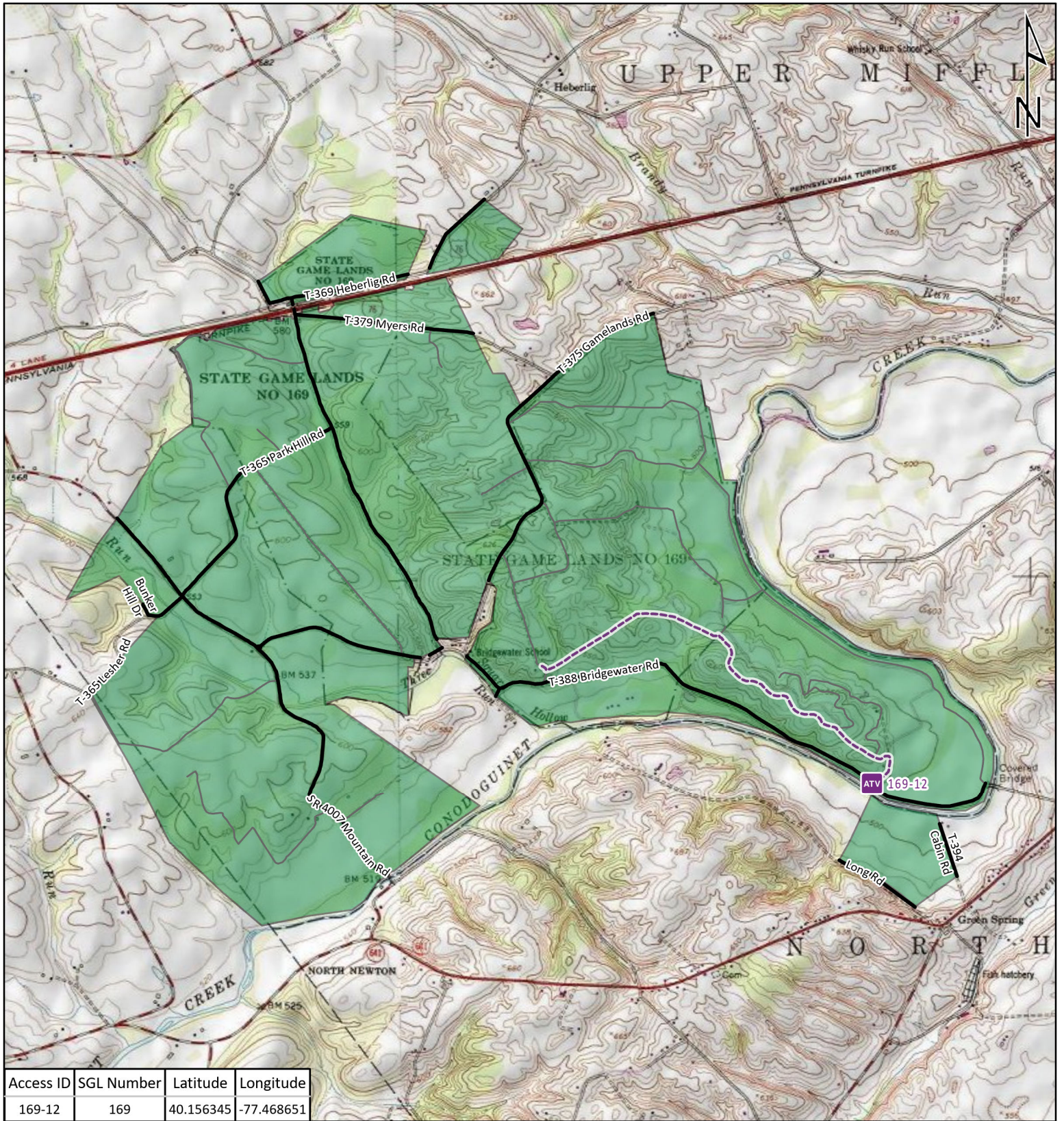
-  ATV Access Trail Start
-  State Game Land Boundary
- Game Land Roads
-  Roads Open to Vehicle Traffic
-  Roads Seasonally Open to Vehicle Traffic
-  Roads Closed to Vehicle Traffic
-  ATV Access with Permit



STATE GAME LAND 166



It is unlawful to ride ATV's on state game lands, except on designated roads open for persons issued a Disabled Person Permit, and who have a valid registration from the Department of Conservation & Natural Resources.

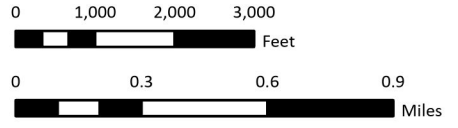


Access ID	SGL Number	Latitude	Longitude
169-12	169	40.156345	-77.468651

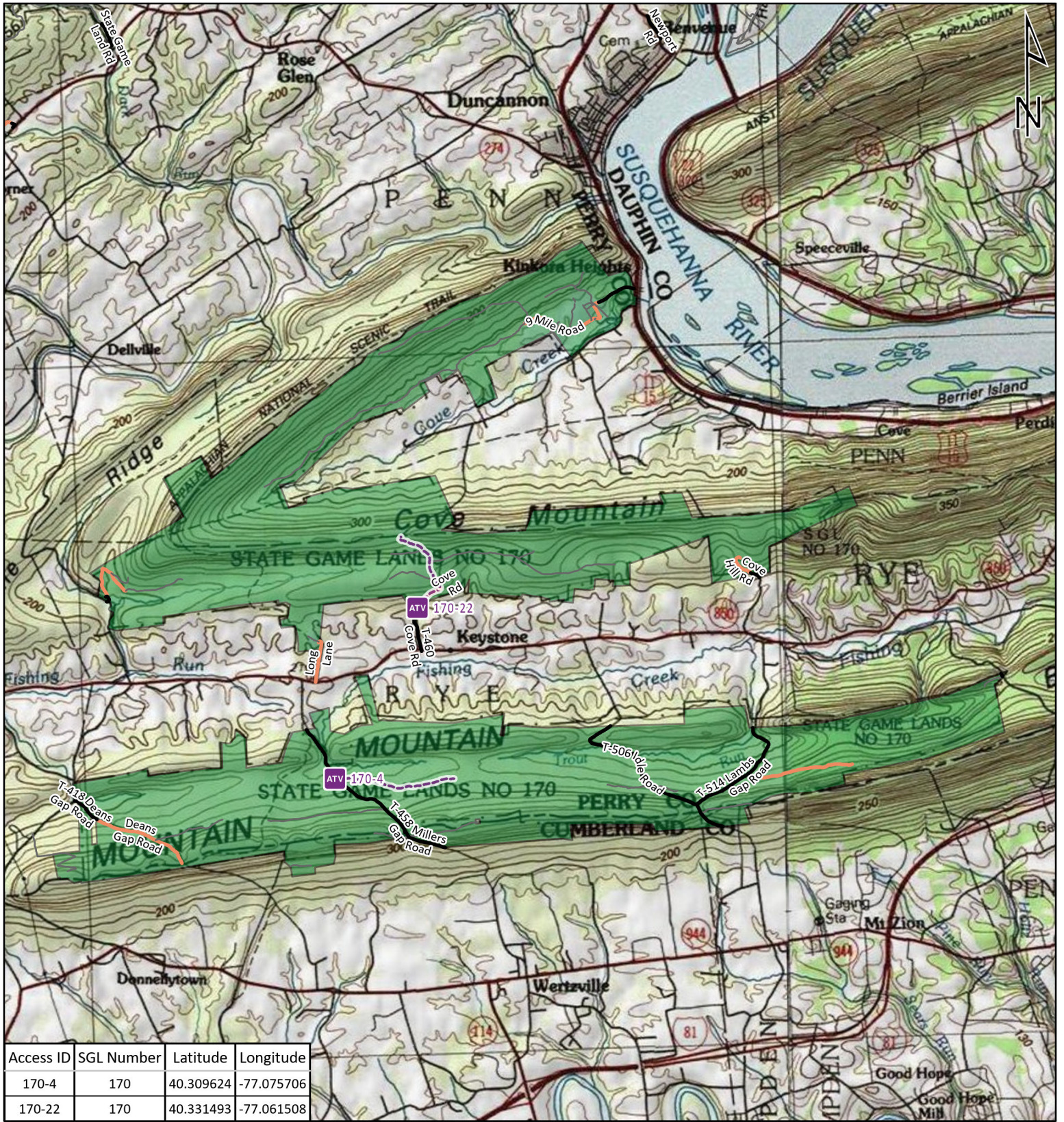
-  ATV Access Trail Start
-  State Game Land Boundary
- Game Land Roads
 -  Roads Open to Vehicle Traffic
 -  Roads Seasonally Open to Vehicle Traffic
 -  Roads Closed to Vehicle Traffic
 -  ATV Access with Permit



STATE GAME LAND 169

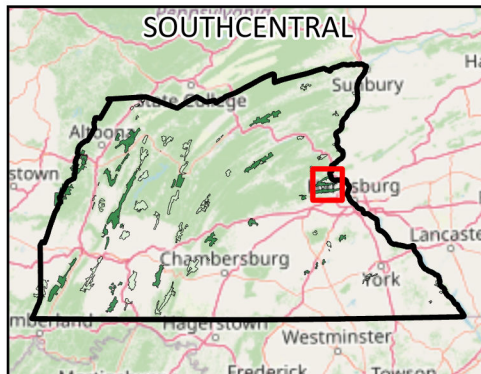


It is unlawful to ride ATV's on state game lands, except on designated roads open for persons issued a Disabled Person Permit, and who have a valid registration from the Department of Conservation & Natural Resources.

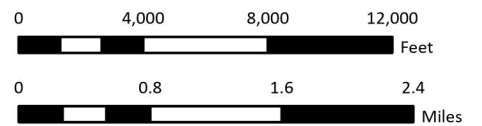


Access ID	SGL Number	Latitude	Longitude
170-4	170	40.309624	-77.075706
170-22	170	40.331493	-77.061508

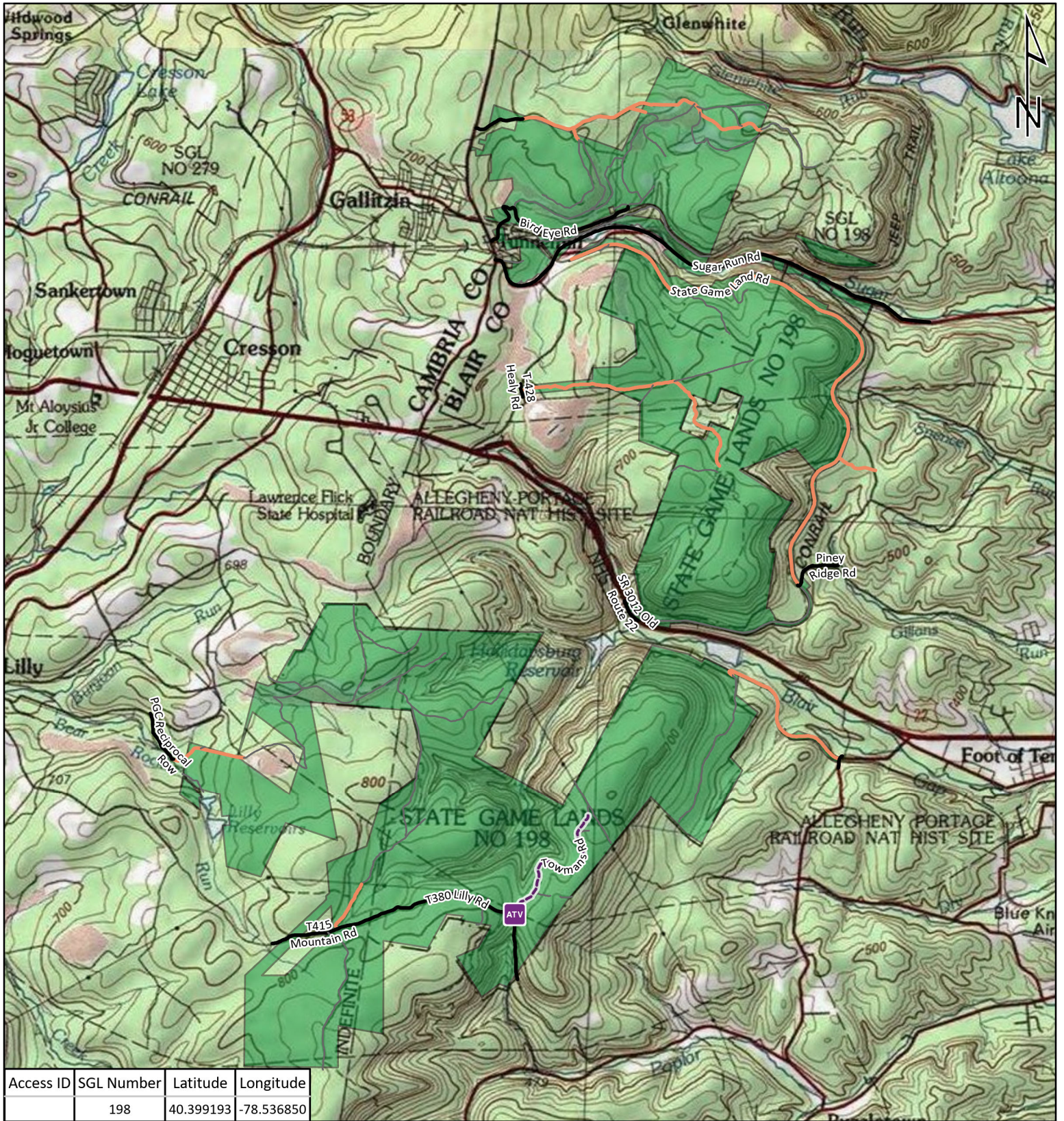
-  ATV Access Trail Start
-  State Game Land Boundary
- Game Land Roads
-  Roads Open to Vehicle Traffic
-  Roads Seasonally Open to Vehicle Traffic
-  Roads Closed to Vehicle Traffic
-  ATV Access with Permit



STATE GAME LAND 170

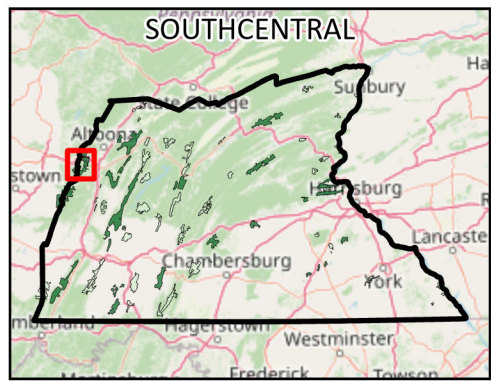


It is unlawful to ride ATV's on state game lands, except on designated roads open for persons issued a Disabled Person Permit, and who have a valid registration from the Department of Conservation & Natural Resources.



Access ID	SGL Number	Latitude	Longitude
	198	40.399193	-78.536850

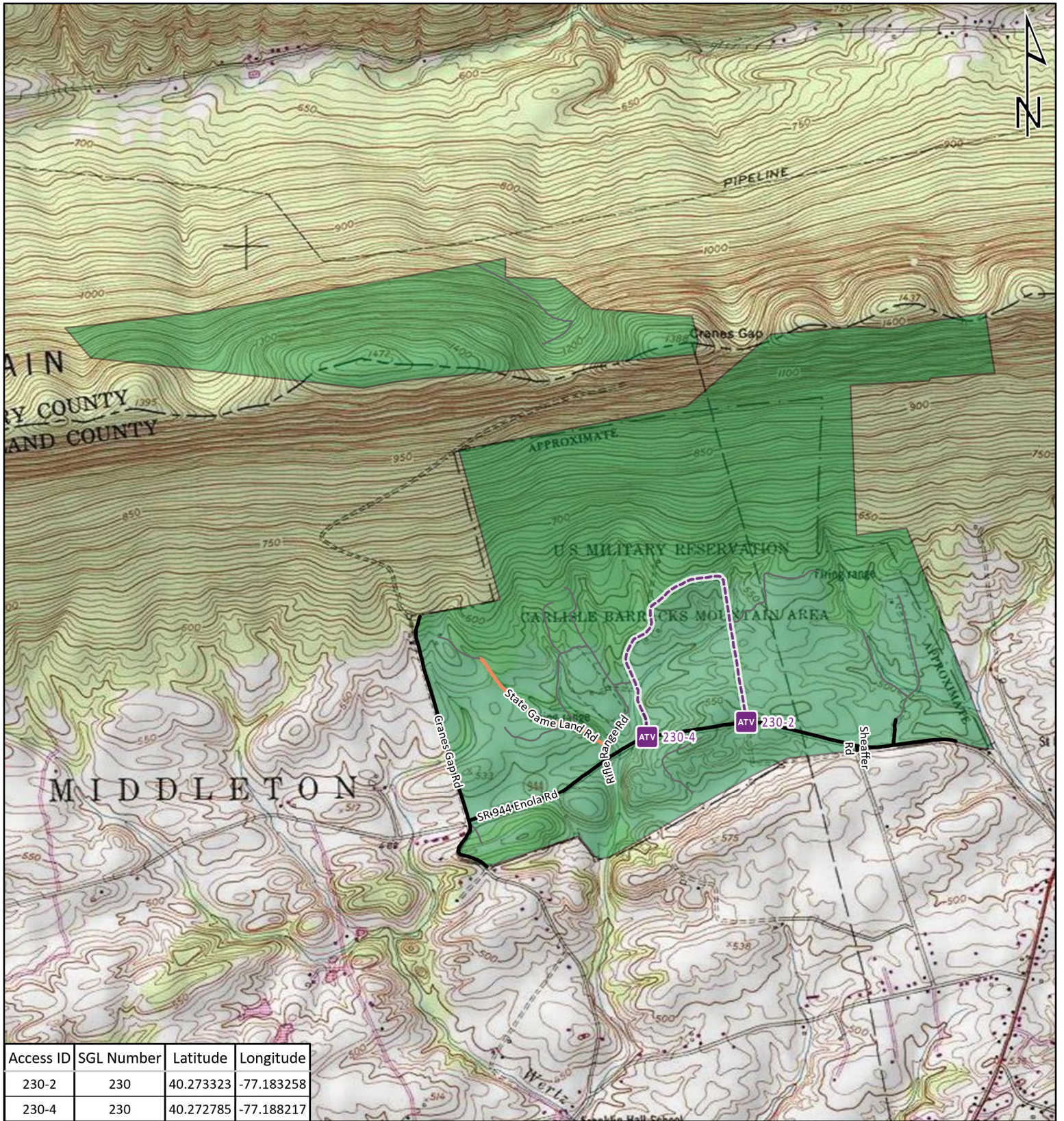
- ATV Access Trail Start
- State Game Land Boundary
- Game Land Roads**
- Roads Open to Vehicle Traffic
- Roads Seasonally Open to Vehicle Traffic
- Roads Closed to Vehicle Traffic
- ATV Access with Permit



STATE GAME LAND 198



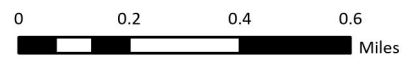
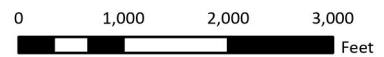
It is unlawful to ride ATV's on state game lands, except on designated roads open for persons issued a Disabled Person Permit, and who have a valid registration from the Department of Conservation & Natural Resources.



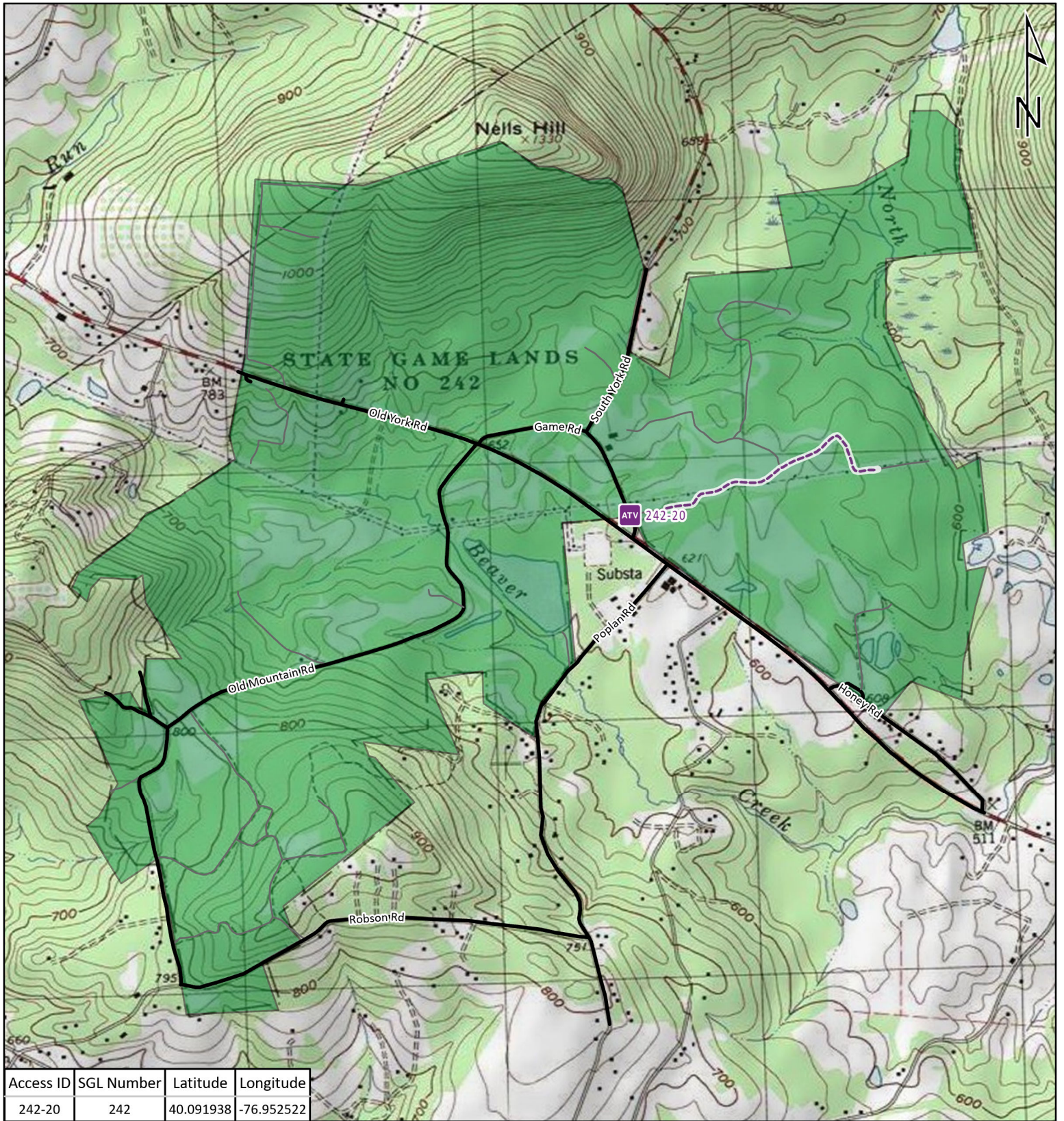
-  ATV Access Trail Start
-  State Game Land Boundary
- Game Land Roads**
-  Roads Open to Vehicle Traffic
-  Roads Seasonally Open to Vehicle Traffic
-  Roads Closed to Vehicle Traffic
-  ATV Access with Permit



STATE GAME LAND 230



It is unlawful to ride ATV's on state game lands, except on designated roads open for persons issued a Disabled Person Permit, and who have a valid registration from the Department of Conservation & Natural Resources.



Access ID	SGL Number	Latitude	Longitude
242-20	242	40.091938	-76.952522

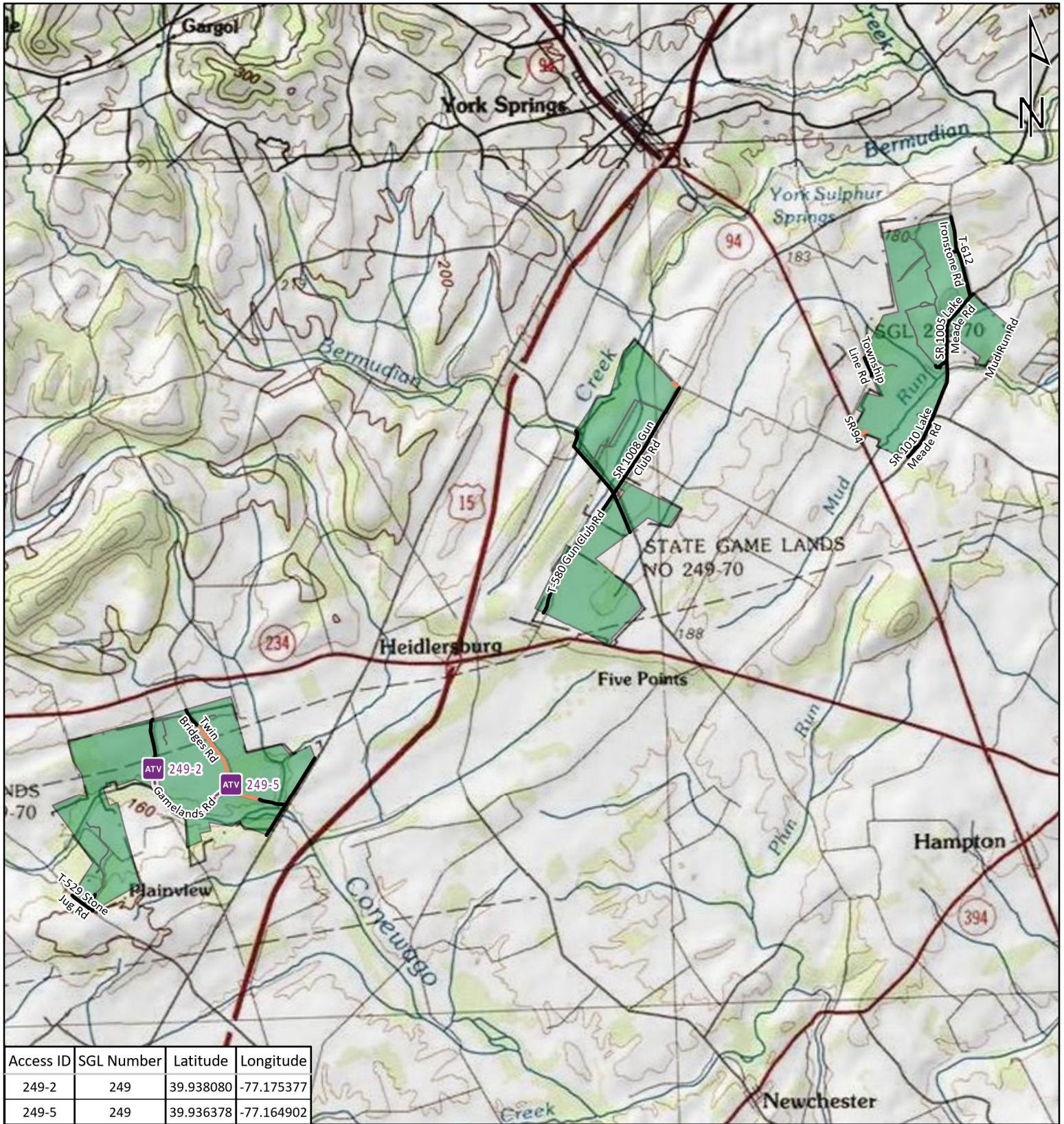
-  ATV Access Trail Start
-  State Game Land Boundary
- Game Land Roads**
-  Roads Open to Vehicle Traffic
-  Roads Seasonally Open to Vehicle Traffic
-  Roads Closed to Vehicle Traffic
-  ATV Access with Permit



STATE GAME LAND 242

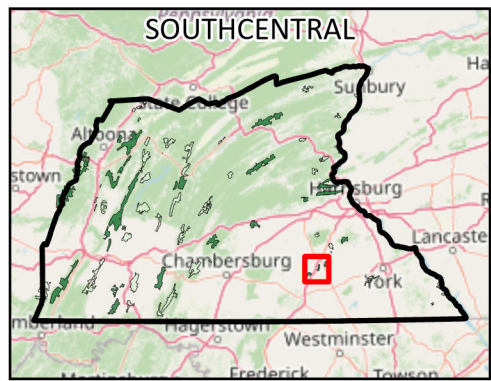


It is unlawful to ride ATV's on state game lands, except on designated roads open for persons issued a Disabled Person Permit, and who have a valid registration from the Department of Conservation & Natural Resources.

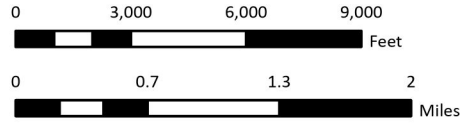


Access ID	SGL Number	Latitude	Longitude
249-2	249	39.938080	-77.175377
249-5	249	39.936378	-77.164902

-  ATV Access Trail Start
-  State Game Land Boundary
- Game Land Roads**
-  Roads Open to Vehicle Traffic
-  Roads Seasonally Open to Vehicle Traffic
-  Roads Closed to Vehicle Traffic
-  ATV Access with Permit



STATE GAME LAND 249



It is unlawful to ride ATV's on state game lands, except on designated roads open for persons issued a Disabled Person Permit, and who have a valid registration from the Department of Conservation & Natural Resources.