



PENNSYLVANIA GAME COMMISSION

SOUTHEAST REGION

253 SNYDER ROAD READING, PA 19605 | 1-833-742-4868 (PGC HUNT) 1-833-742-9453 (PGC WILD)

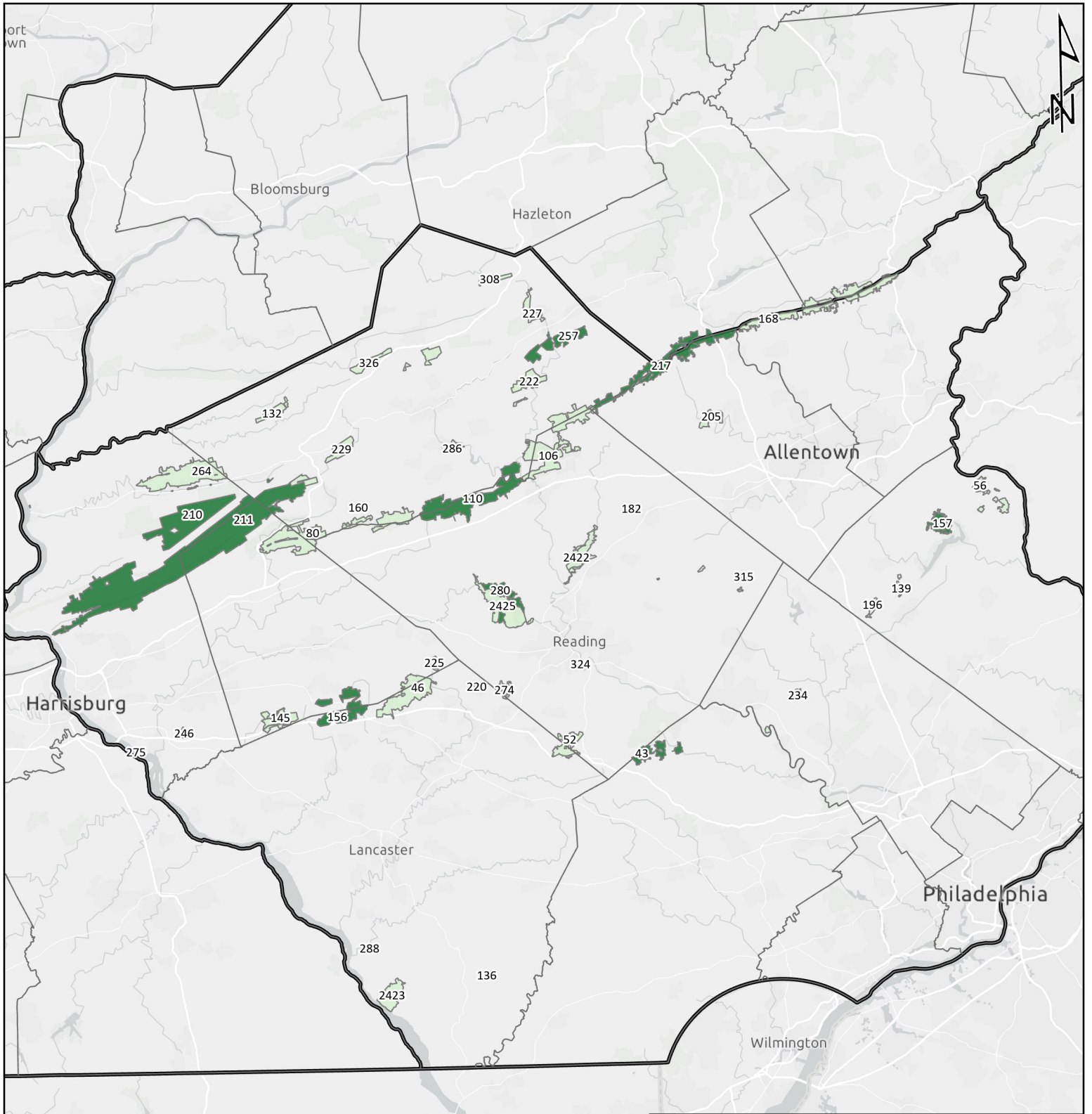


Southeast Region

It is unlawful to ride ATVs on state game lands, except on designated roads open for persons issued a Disabled Persons Permit, and who have a valid registration from the Department of Conservation & Natural Resources.

Table of Contents

Southeast Region Overview Map	SE-2
State Game Lands 43	Berks and Chester counties	SE-3
State Game Lands 110	Berks and Schuylkill counties.....	SE-4
State Game Lands 156	Lancaster and Lebanon counties.....	SE-5
State Game Lands 157	Bucks County	SE-6
State Game Lands 210	Dauphin County.....	SE-7
State Game Lands 211	Dauphin, Lebanon, and Schuylkill counties	SE-8
State Game Lands 217	Carbon, Lehigh, and Schuylkill counties	SE-9
State Game Lands 257	Schuylkill County	SE-10
State Game Lands 280	Berks County.....	SE-11



Pennsylvania Game Commission Southeast Region

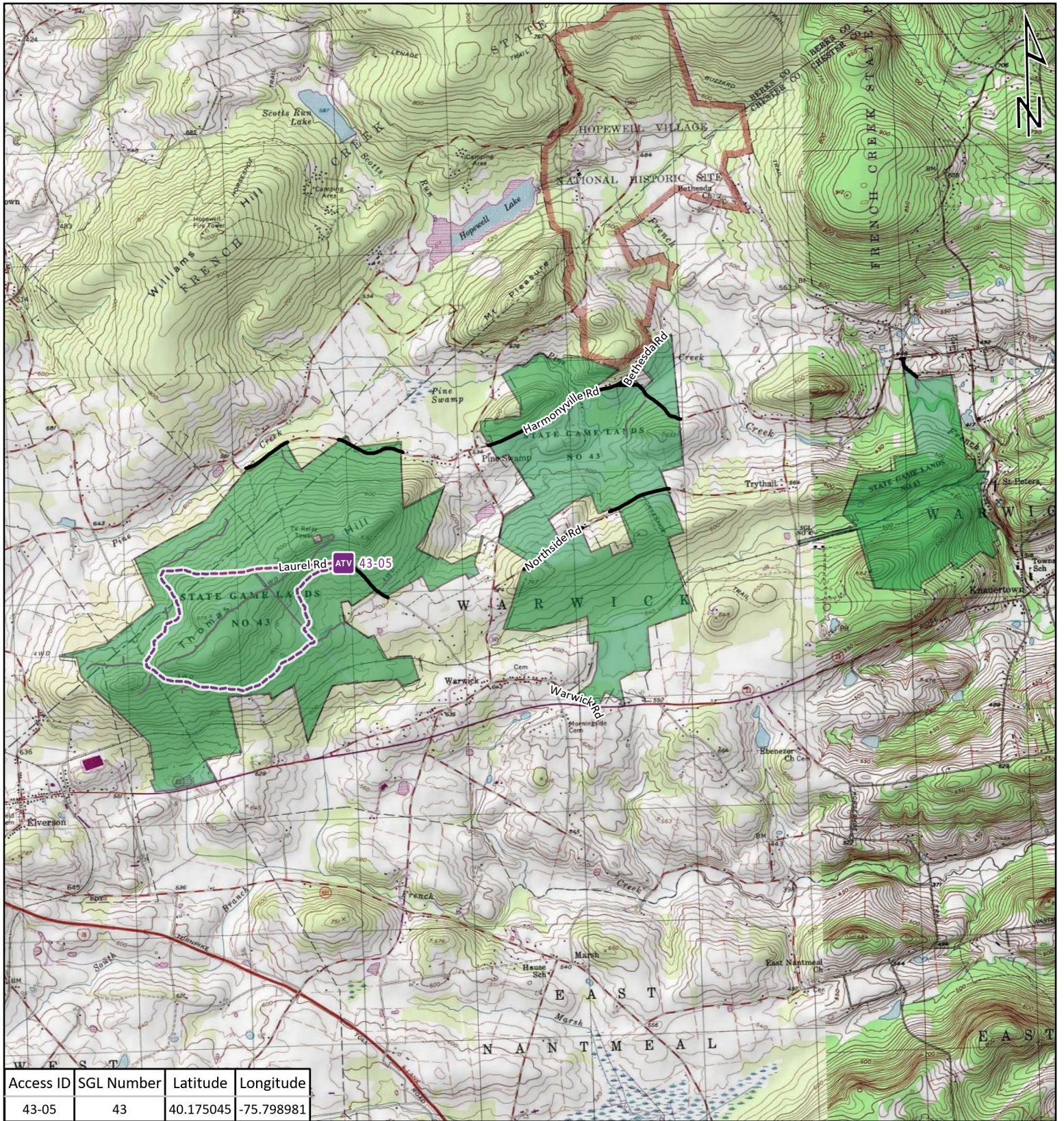
 PA Game Commission Regions

State Game Lands

 ATV Access with Permit

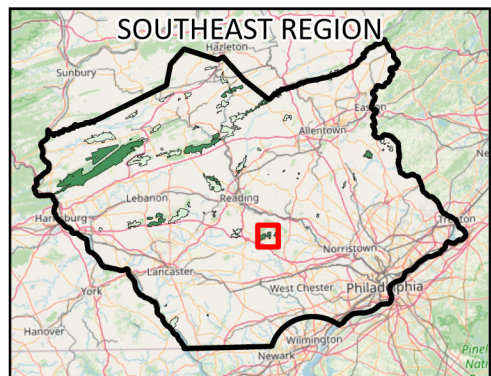
 No ATV Access





Access ID	SGL Number	Latitude	Longitude
43-05	43	40.175045	-75.798981

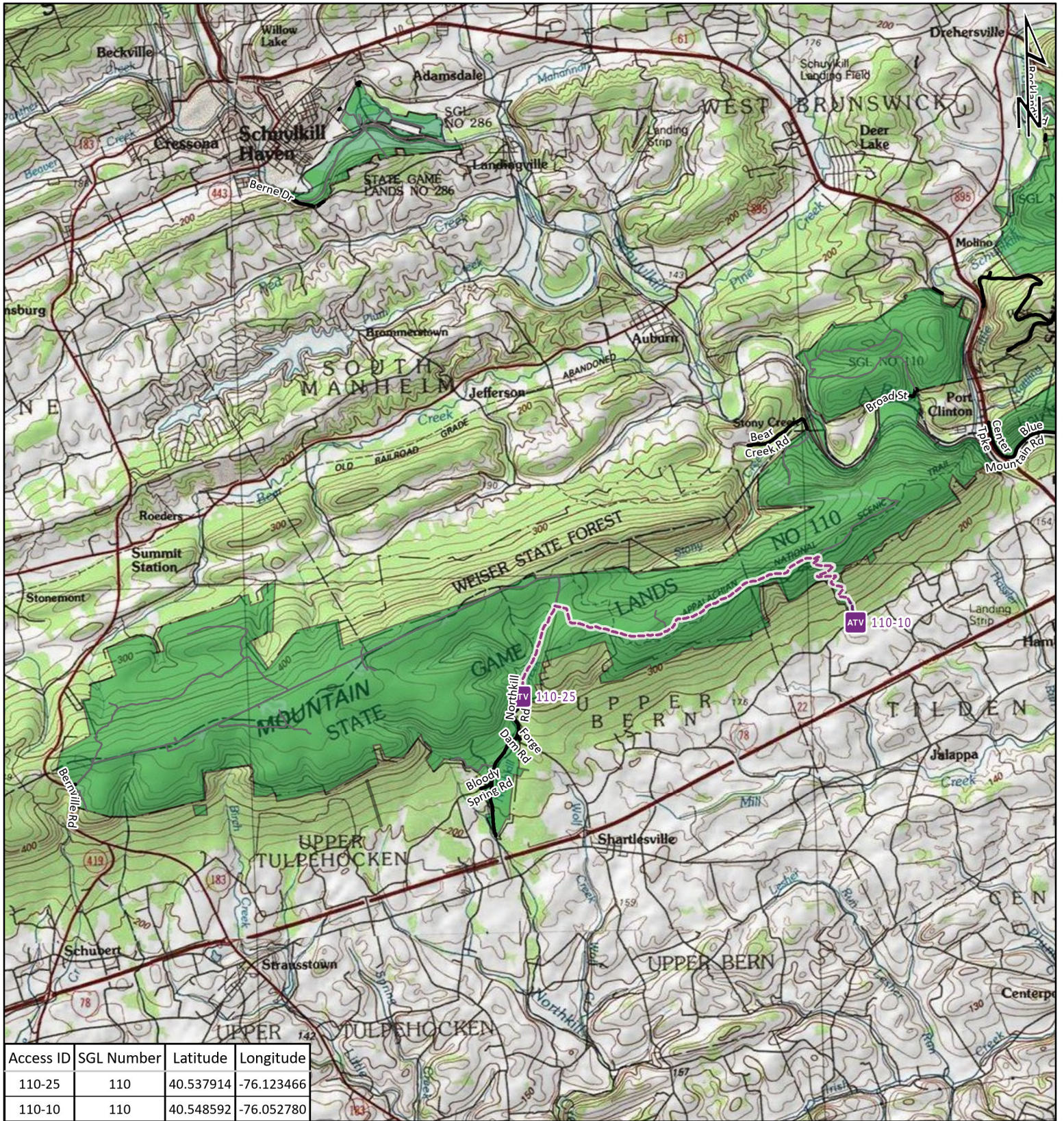
-  ATV Access Trail Start
-  State Game Land Boundary
- Game Land Roads**
-  Roads Open to Vehicle Traffic
-  Roads Seasonally Open to Vehicle Traffic
-  Roads Closed to Vehicle Traffic
-  ATV Access with Permit



STATE GAME LAND 43

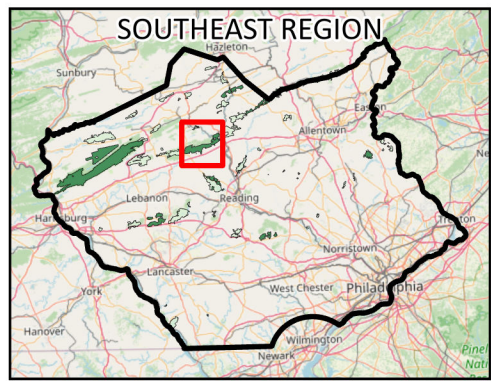


It is unlawful to ride ATV's on state game lands, except on designated roads open for persons issued a Disabled Person Permit, and who have a valid registration from the Department of Conservation & Natural Resources.

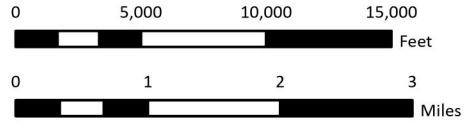


Access ID	SGL Number	Latitude	Longitude
110-25	110	40.537914	-76.123466
110-10	110	40.548592	-76.052780

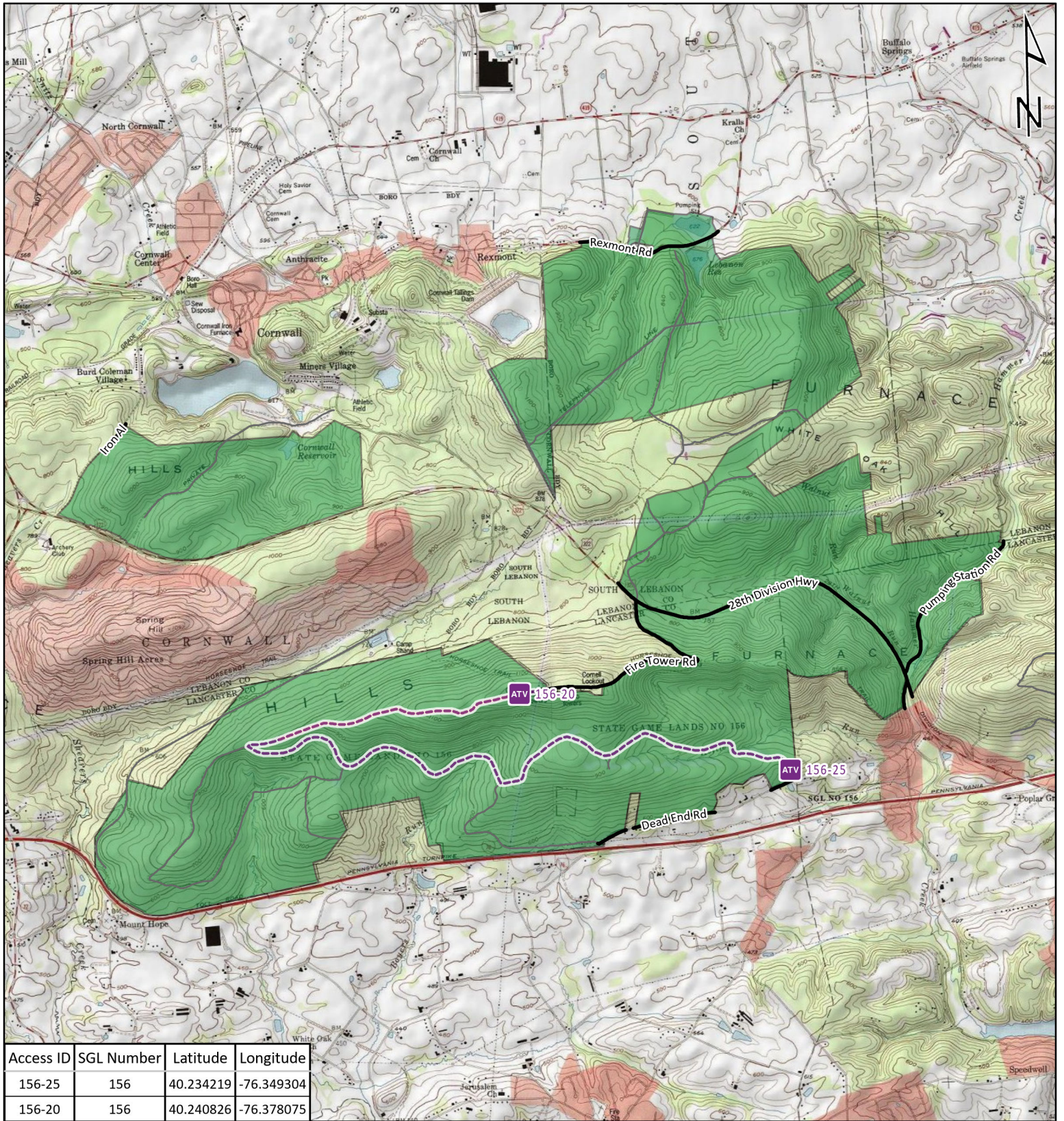
-  ATV Access Trail Start
-  State Game Land Boundary
- Game Land Roads**
-  Roads Open to Vehicle Traffic
-  Roads Seasonally Open to Vehicle Traffic
-  Roads Closed to Vehicle Traffic
-  ATV Access with Permit



STATE GAME LAND 110

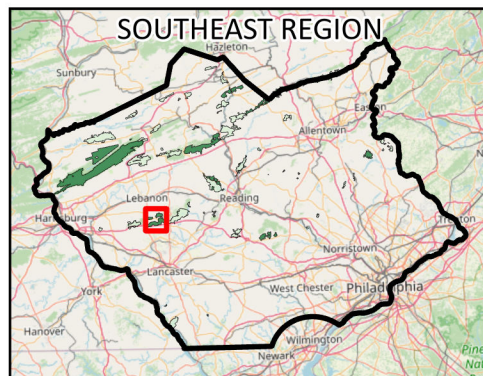


It is unlawful to ride ATV's on state game lands, except on designated roads open for persons issued a Disabled Person Permit, and who have a valid registration from the Department of Conservation & Natural Resources.

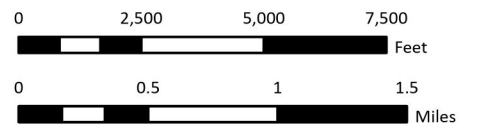


Access ID	SGL Number	Latitude	Longitude
156-25	156	40.234219	-76.349304
156-20	156	40.240826	-76.378075

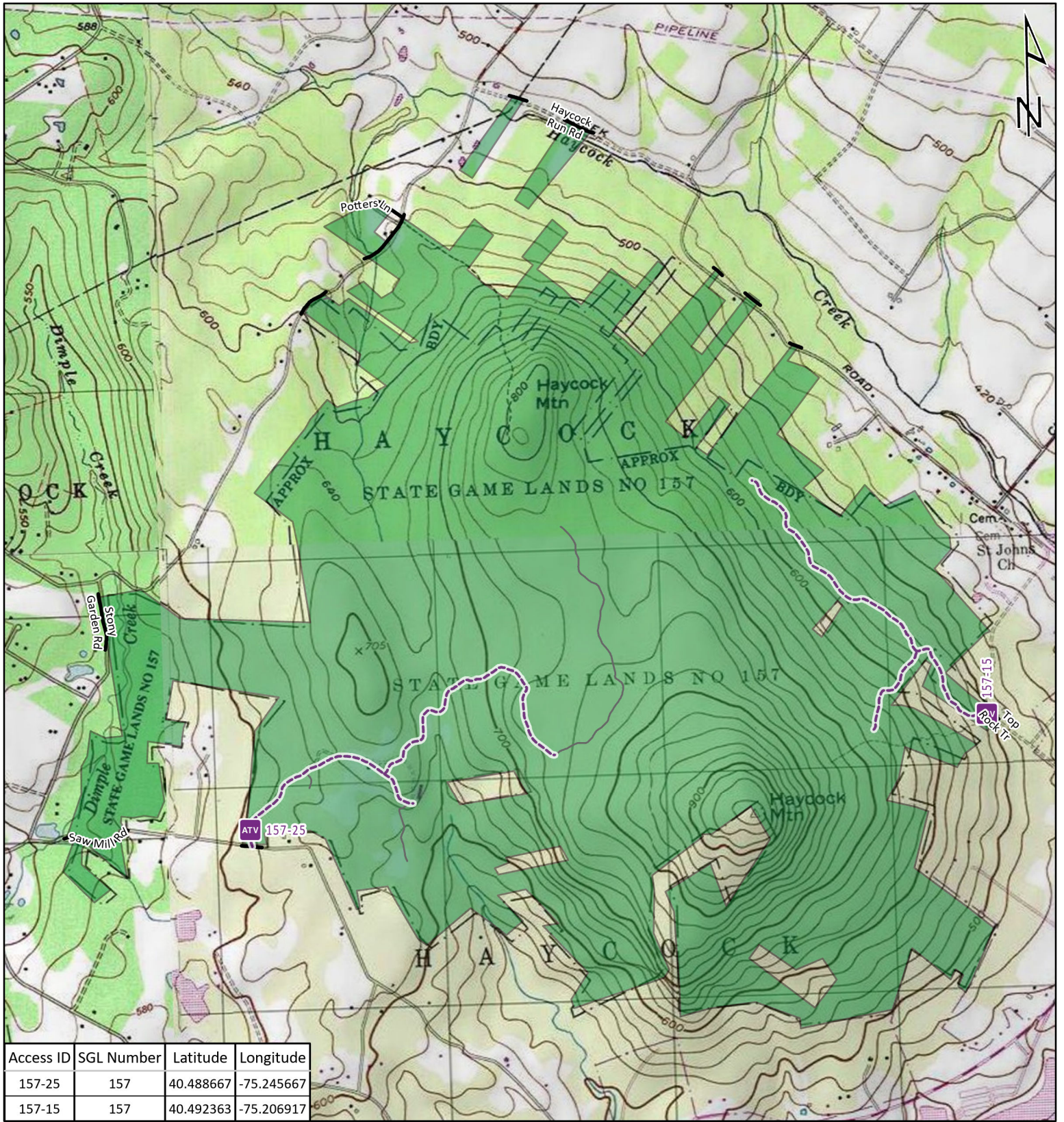
- ATV Access Trail Start
- State Game Land Boundary
- Game Land Roads**
- Roads Open to Vehicle Traffic
- Roads Seasonally Open to Vehicle Traffic
- Roads Closed to Vehicle Traffic
- ATV Access with Permit








STATE GAME LAND 156

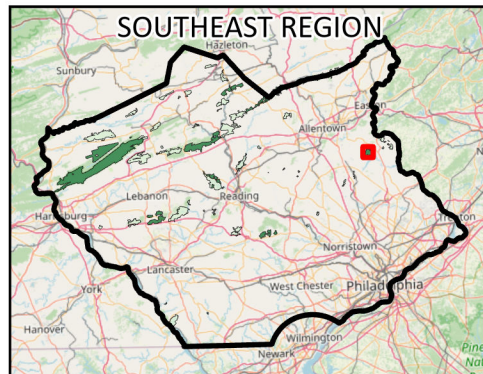


It is unlawful to ride ATV's on state game lands, except on designated roads open for persons issued a Disabled Person Permit, and who have a valid registration from the Department of Conservation & Natural Resources.

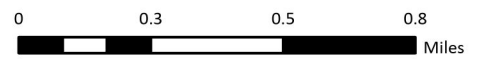
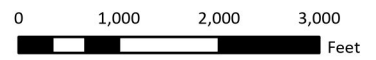


Access ID	SGL Number	Latitude	Longitude
157-25	157	40.488667	-75.245667
157-15	157	40.492363	-75.206917

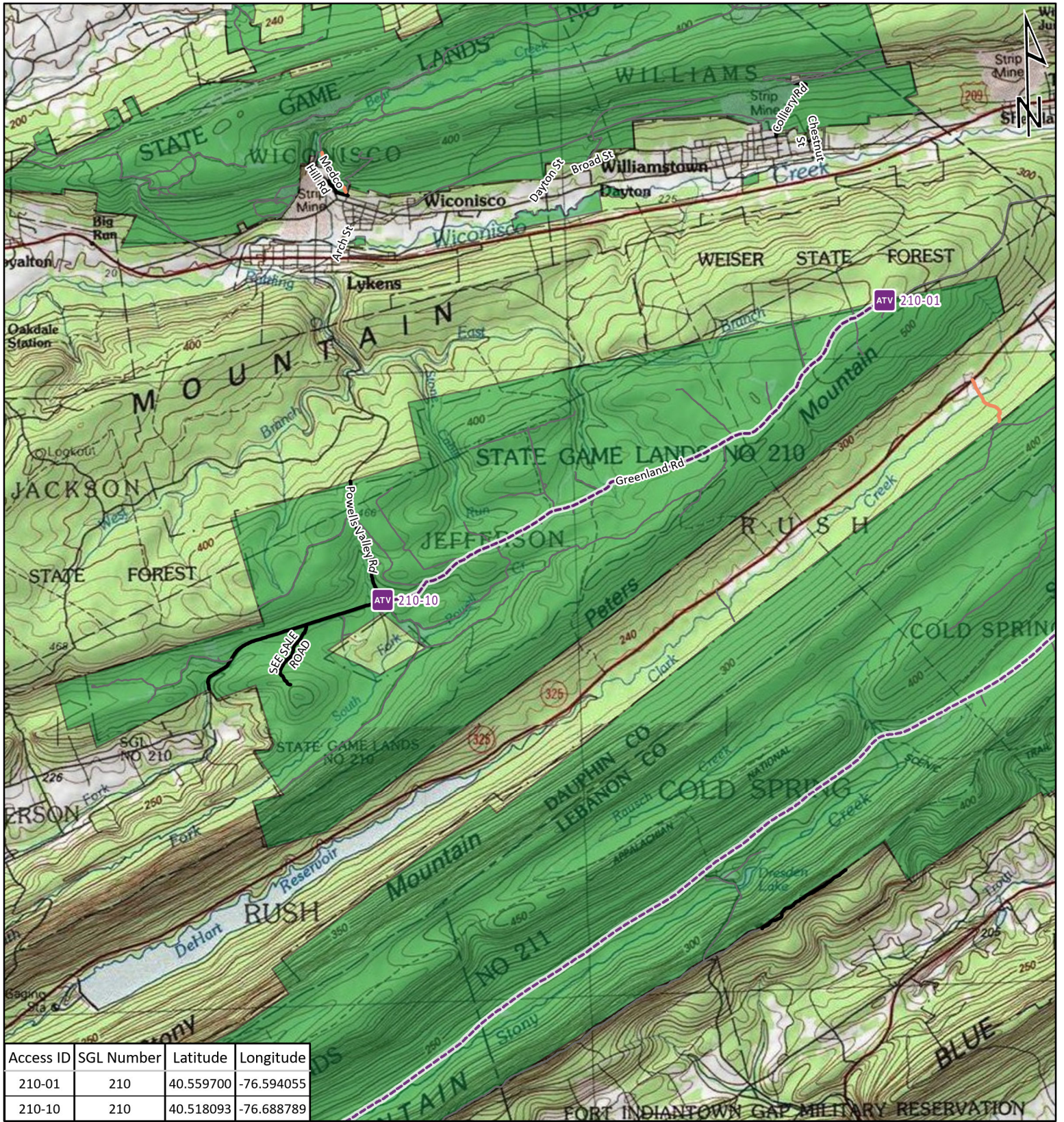
-  ATV Access Trail Start
-  State Game Land Boundary
- Game Land Roads**
-  Roads Open to Vehicle Traffic
-  Roads Seasonally Open to Vehicle Traffic
-  Roads Closed to Vehicle Traffic
-  ATV Access with Permit




STATE GAME LAND 157

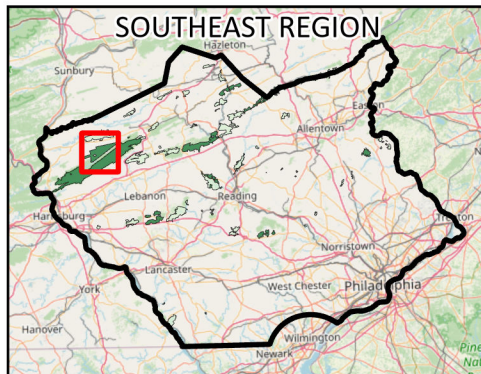


It is unlawful to ride ATV's on state game lands, except on designated roads open for persons issued a Disabled Person Permit, and who have a valid registration from the Department of Conservation & Natural Resources.



Access ID	SGL Number	Latitude	Longitude
210-01	210	40.559700	-76.594055
210-10	210	40.518093	-76.688789

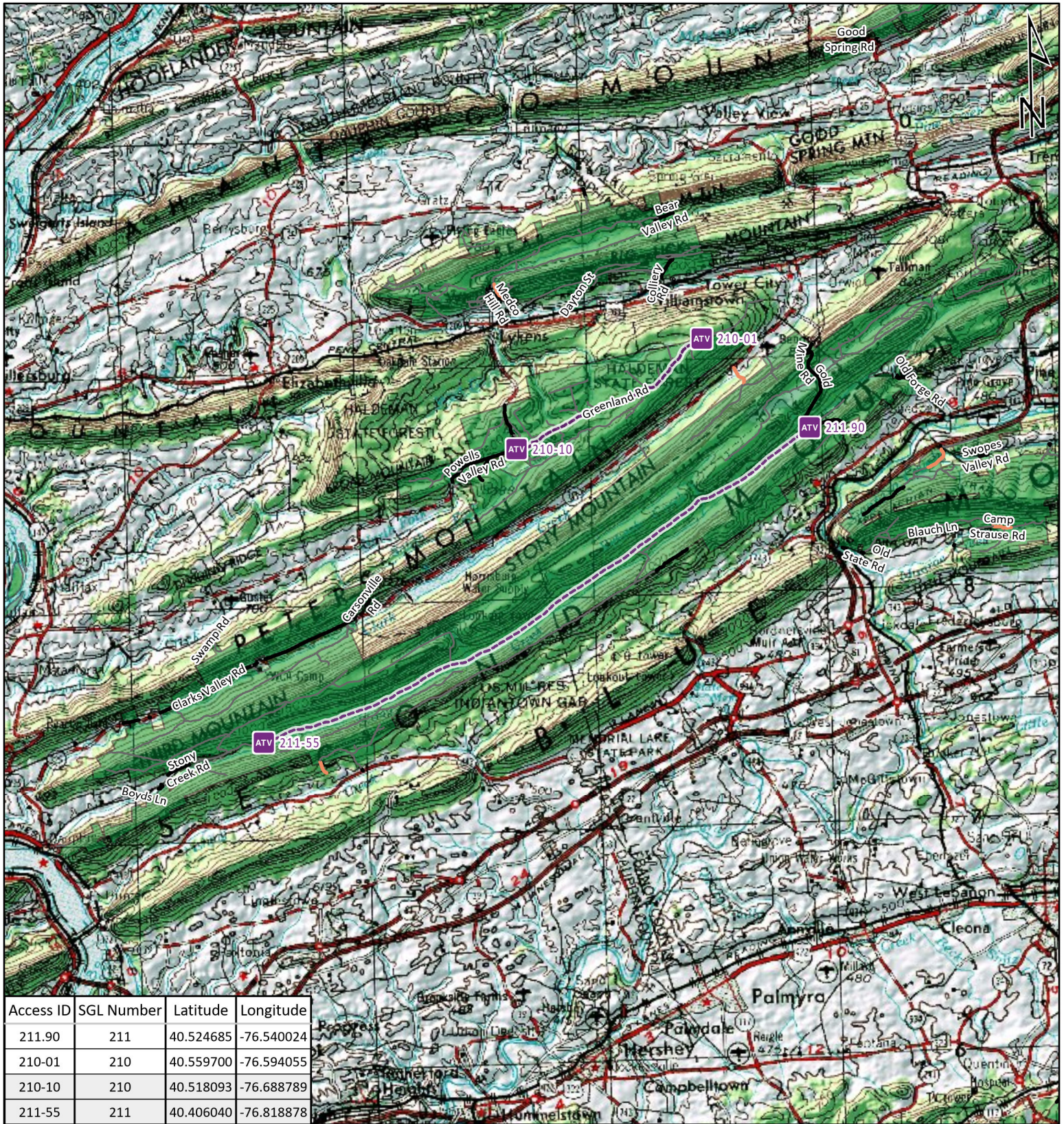
-  ATV Access Trail Start
-  State Game Land Boundary
- Game Land Roads
-  Roads Open to Vehicle Traffic
-  Roads Seasonally Open to Vehicle Traffic
-  Roads Closed to Vehicle Traffic
-  ATV Access with Permit



STATE GAME LAND 210

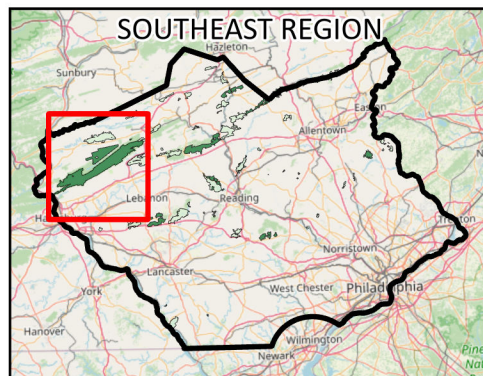


It is unlawful to ride ATV's on state game lands, except on designated roads open for persons issued a Disabled Person Permit, and who have a valid registration from the Department of Conservation & Natural Resources.



Access ID	SGL Number	Latitude	Longitude
211.90	211	40.524685	-76.540024
210-01	210	40.559700	-76.594055
210-10	210	40.518093	-76.688789
211-55	211	40.406040	-76.818878

-  ATV Access Trail Start
-  State Game Land Boundary
- Game Land Roads
-  Roads Open to Vehicle Traffic
-  Roads Seasonally Open to Vehicle Traffic
-  Roads Closed to Vehicle Traffic
-  ATV Access with Permit



STATE GAME LAND 211



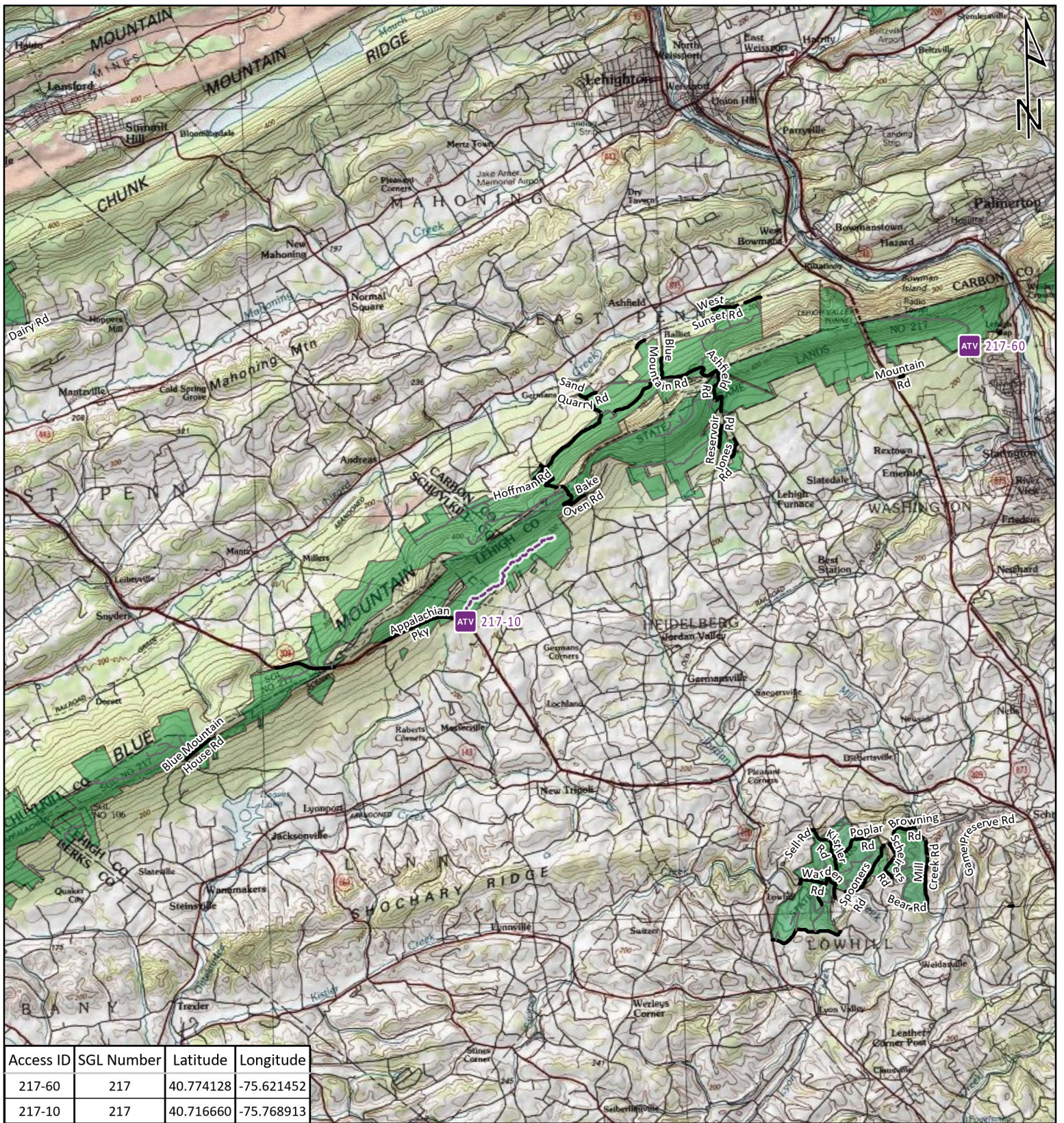
0 10,000 20,000 30,000

Feet

0 2 4 6

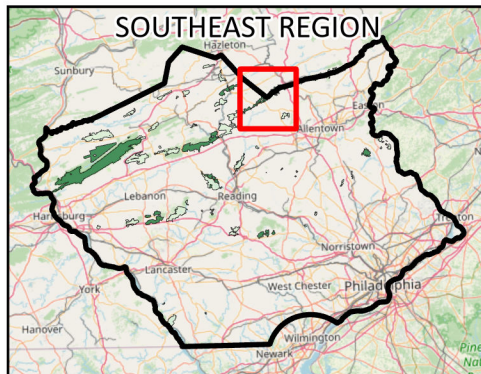
Miles

It is unlawful to ride ATV's on state game lands, except on designated roads open for persons issued a Disabled Person Permit, and who have a valid registration from the Department of Conservation & Natural Resources.



Access ID	SGL Number	Latitude	Longitude
217-60	217	40.774128	-75.621452
217-10	217	40.716660	-75.768913

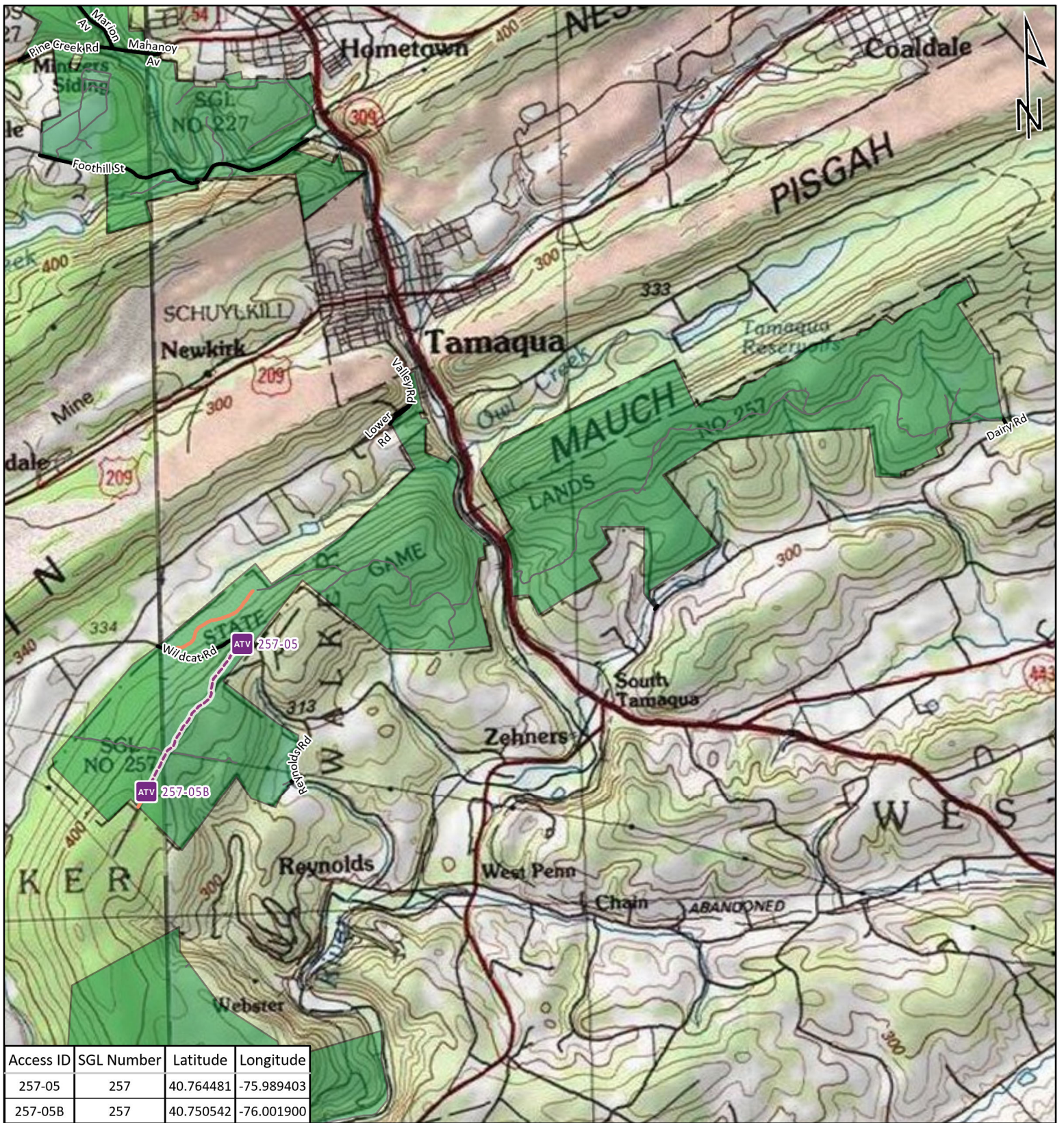
-  ATV Access Trail Start
-  State Game Land Boundary
- Game Land Roads**
-  Roads Open to Vehicle Traffic
-  Roads Seasonally Open to Vehicle Traffic
-  Roads Closed to Vehicle Traffic
-  ATV Access with Permit



STATE GAME LAND 217

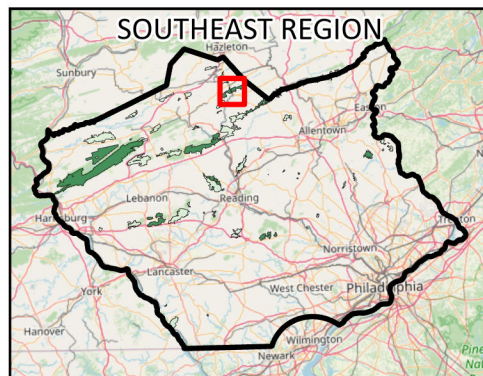


It is unlawful to ride ATV's on state game lands, except on designated roads open for persons issued a Disabled Person Permit, and who have a valid registration from the Department of Conservation & Natural Resources.



Access ID	SGL Number	Latitude	Longitude
257-05	257	40.764481	-75.989403
257-05B	257	40.750542	-76.001900

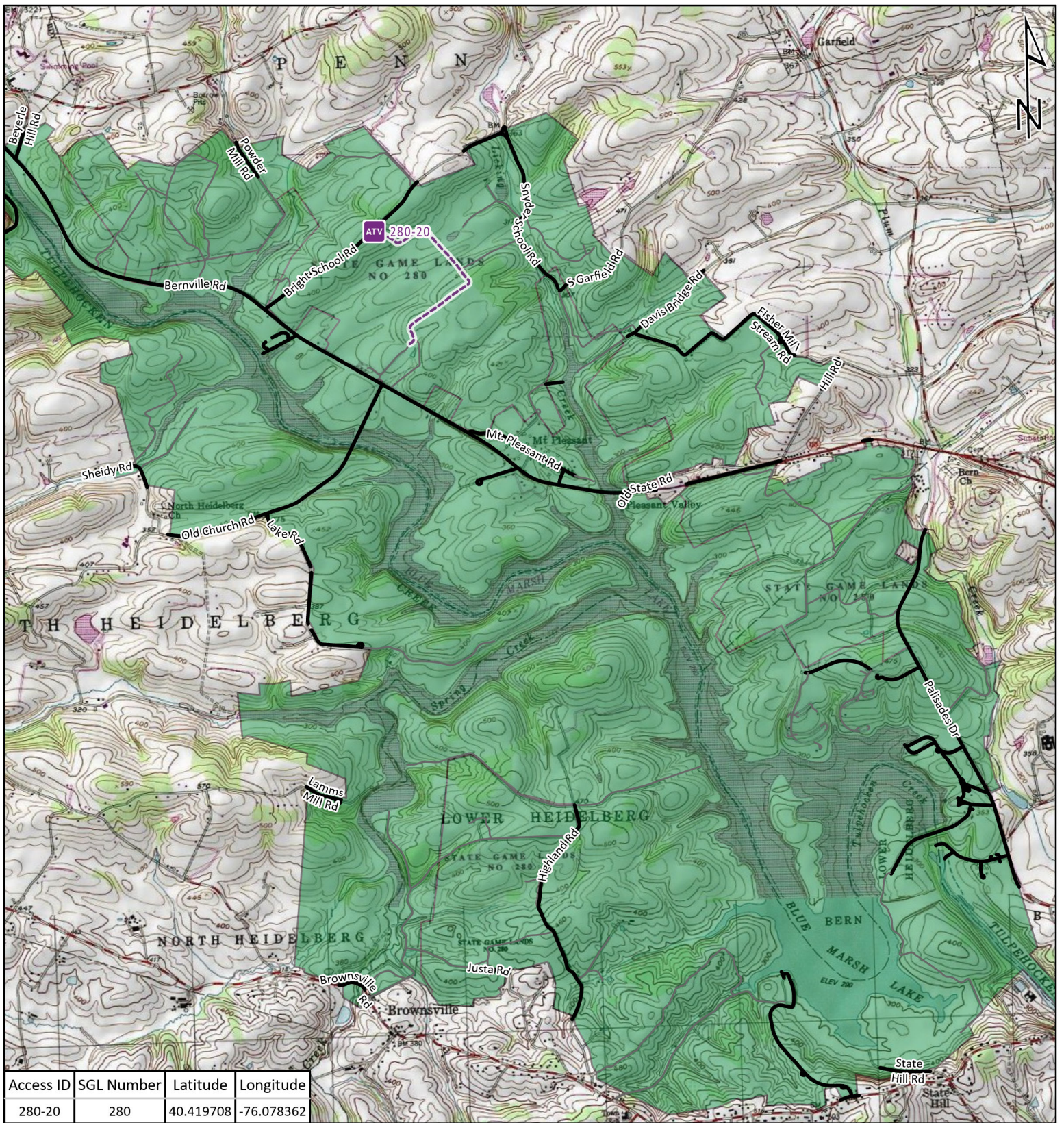
-  ATV Access Trail Start
-  State Game Land Boundary
- Game Land Roads**
-  Roads Open to Vehicle Traffic
-  Roads Seasonally Open to Vehicle Traffic
-  Roads Closed to Vehicle Traffic
-  ATV Access with Permit



STATE GAME LAND 257

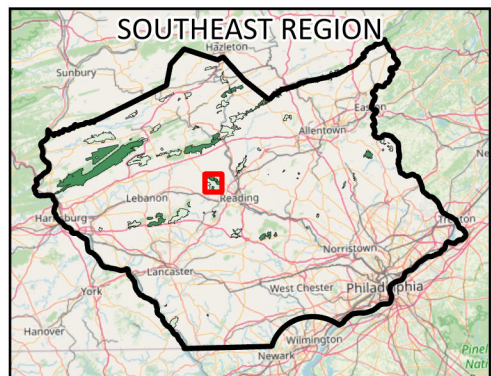


It is unlawful to ride ATV's on state game lands, except on designated roads open for persons issued a Disabled Person Permit, and who have a valid registration from the Department of Conservation & Natural Resources.

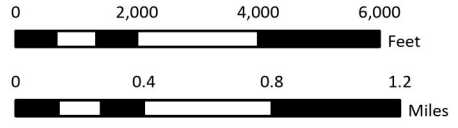


Access ID	SGL Number	Latitude	Longitude
280-20	280	40.419708	-76.078362

-  ATV Access Trail Start
-  State Game Land Boundary
- Game Land Roads**
-  Roads Open to Vehicle Traffic
-  Roads Seasonally Open to Vehicle Traffic
-  Roads Closed to Vehicle Traffic
-  ATV Access with Permit



STATE GAME LAND 280



It is unlawful to ride ATV's on state game lands, except on designated roads open for persons issued a Disabled Person Permit, and who have a valid registration from the Department of Conservation & Natural Resources.