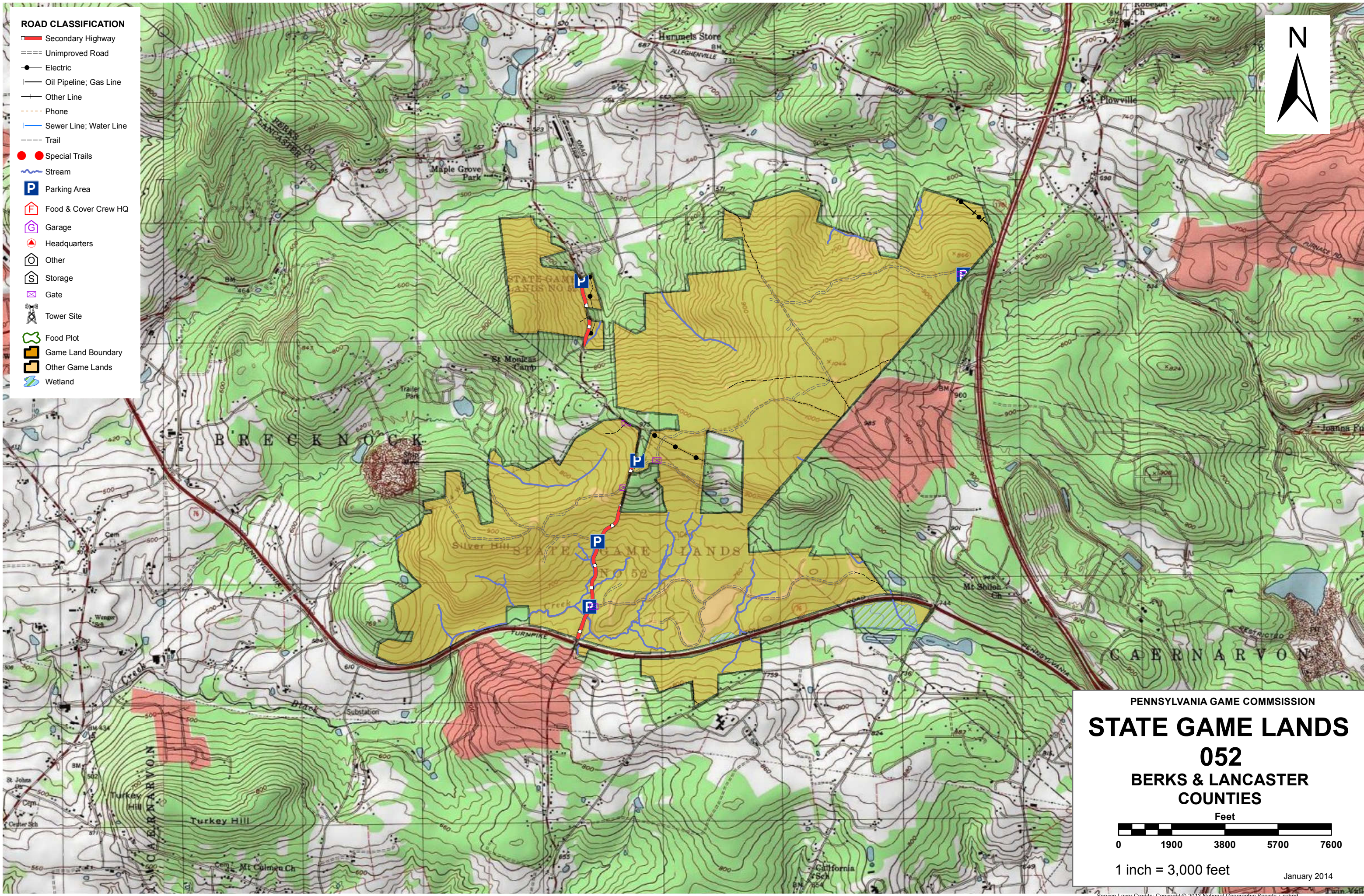


- ROAD CLASSIFICATION**
- Secondary Highway
 - Unimproved Road
 - Electric
 - Oil Pipeline; Gas Line
 - Other Line
 - Phone
 - Sewer Line; Water Line
 - Trail
 - Special Trails
 - Stream
 - Parking Area
 - Food & Cover Crew HQ
 - Garage
 - Headquarters
 - Other
 - Storage
 - Gate
 - Tower Site
 - Food Plot
 - Game Land Boundary
 - Other Game Lands
 - Wetland



PENNSYLVANIA GAME COMMISSION

STATE GAME LANDS

052

BERKS & LANCASTER COUNTIES

Feet

1 inch = 3,000 feet

January 2014

Service Layer Credits: Copyright © 2013 National Geographic Society, I-cubed



SPORTSMEN'S RECREATION MAP



STATE GAME LANDS No. 052 BERKS & LANCASTER COUNTIES

Each time a hunter buys a hunting license, the money he spends goes toward many facets of wildlife management. Since 1920, close to a million and a half acres of State Game Lands have been acquired with these funds. Each year nearly \$7,000,000 is spent to improve wildlife habitat. Habitat improvements enhance living conditions for non-game birds and mammals as well as those species which are hunted. Pennsylvania hunters willingly share these lands with the non-hunting public, and with few exceptions, State Game Lands are open for general use year round. Surveys indicate that hunting accounts for only thirty-five percent of game land usage. The remaining sixty-five percent is used by the general public for non-hunting purposes.

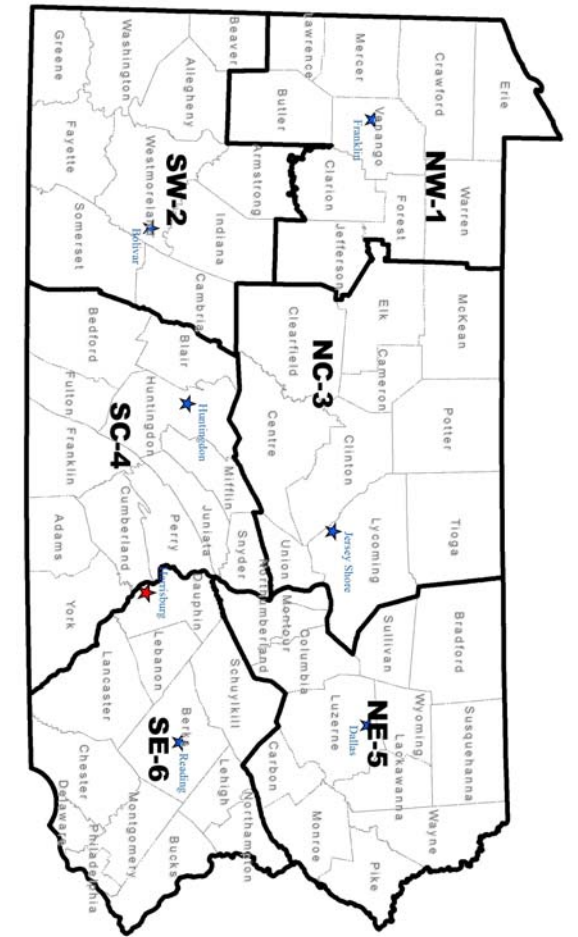
“Working Together for Wildlife” is a Game Commission program providing everyone an opportunity to help support wildlife management in the areas for endangered and non-game animals. Monies derived from the “Working Together for Wildlife” Program are being used in Pennsylvania to re-introduce the osprey, river otter, bald eagle, peregrine falcon and provide habitat for other birds and mammals indigenous to the Commonwealth. Construction placement of blue bird houses on State Game Lands provides needed homes for this beautiful songbird. Islands in the Susquehanna River have been set aside as propagations areas for non-game shore birds. Numerous other projects are planned on State Game Lands and other public properties which will also provide food and habitat for non-game wildlife.

The future of Pennsylvania’s wildlife resources requires the concern, cooperation and financial support of everyone, hunters and non-hunters alike. “Working Together for Wildlife” is the answer. Send your contributions to “Working Together for Wildlife”, 2001 Elmerton Avenue, Harrisburg, Pennsylvania 17110-9797.

State Game Lands 52 is in rural Lancaster and Berks Counties within the Pennsylvania Game Commission's Southeast Region (Wildlife Management Unit 5B). The Game Lands is two land compartments and accessible from State Route 2069. Four parking areas are maintained and foot travel allows access.

Deer, turkey, rabbits and squirrels are hunted and there are trapping opportunities for red fox, raccoon, and mink.

Game Lands 52 is primarily wooded with food plots interspersed. Soil conditions, existing wetlands and forest composition present opportunities for several game species as well as species of greatest conservation need. Management focus will be toward, whitetail deer, squirrels and turkey. In addition to practices geared toward game species, all management activities on Game Lands 52 will consider species of concern and habitat improvements that can be made at the local level that we believe will bolster populations of these species on a landscape scale. Specific attention will be paid to bird species such as wood thrush, brown thrasher, blue winger warbler and scarlet tanager. Habitat generalists including whitetail deer, gray squirrels, rabbits and turkey will also benefit from proposed management.



- 1 NORTHWEST REGIONAL HEADQUARTERS
1509 PITTSBURG RD, FRANKLIN, PA 16323
- 2 SOUTHWEST REGIONAL HEADQUARTERS
4820 ROUTE 711, BOUCAR, PA 15923
- 3 NORTHCENTRAL REGIONAL HEADQUARTERS
1566 S ROUTE 44 HWY, JERSEY SHORE, PA 17740
- 4 SOUTHCENTRAL REGIONAL HEADQUARTERS
8627 WILLIAM PENN HWY, HUNTINGDON, PA 16652
- 5 NORTHEAST REGIONAL HEADQUARTERS
3917 MEMORIAL HWY, DALLAS, PA 18612
- 6 SOUTHEAST REGIONAL HEADQUARTERS
253 SNYDER RD, READING, PA 19605

FOR FURTHER INFORMATION
CONTACT THE FOLLOWING:

- 814-432-3187
- 814-432-3188
- 724-238-9523
- 724-238-9524
- 570-398-4744
- 570-398-4745
- 814-643-1831
- 814-643-1835
- 570-675-1143
- 570-675-1144
- 610-926-3136
- 610-926-3137

COMMONWEALTH OF PENNSYLVANIA
PENNSYLVANIA GAME COMMISSION