

Pennsylvania System of School Assessment-Modified:

Reading and Science Performance Level Descriptors and Cut Scores

May 2011

STATE BOARD REVIEW

Topic

- PSSA-M Reading and Science
 - Performance Level Descriptors (PLDs)
 - Cut scores

Task

- Review PLDs
- Review cut score recommendations

Action

- Adopt PLDs
- Adopt Cut Scores

PERFORMANCE-LEVEL DESCRIPTORS

- Statements that describe the knowledge and skills expected at different performance levels with respect to the Pennsylvania Academic Content Standards as defined by the Assessment Anchors and Eligible Content
 - Provide guidelines to assess the level of student performance
 - Provide an indication of how demanding the standards should be
 - Provide a progression for how the standards should be implemented

SCALED SCORE CUTS AND IMPACT - READING

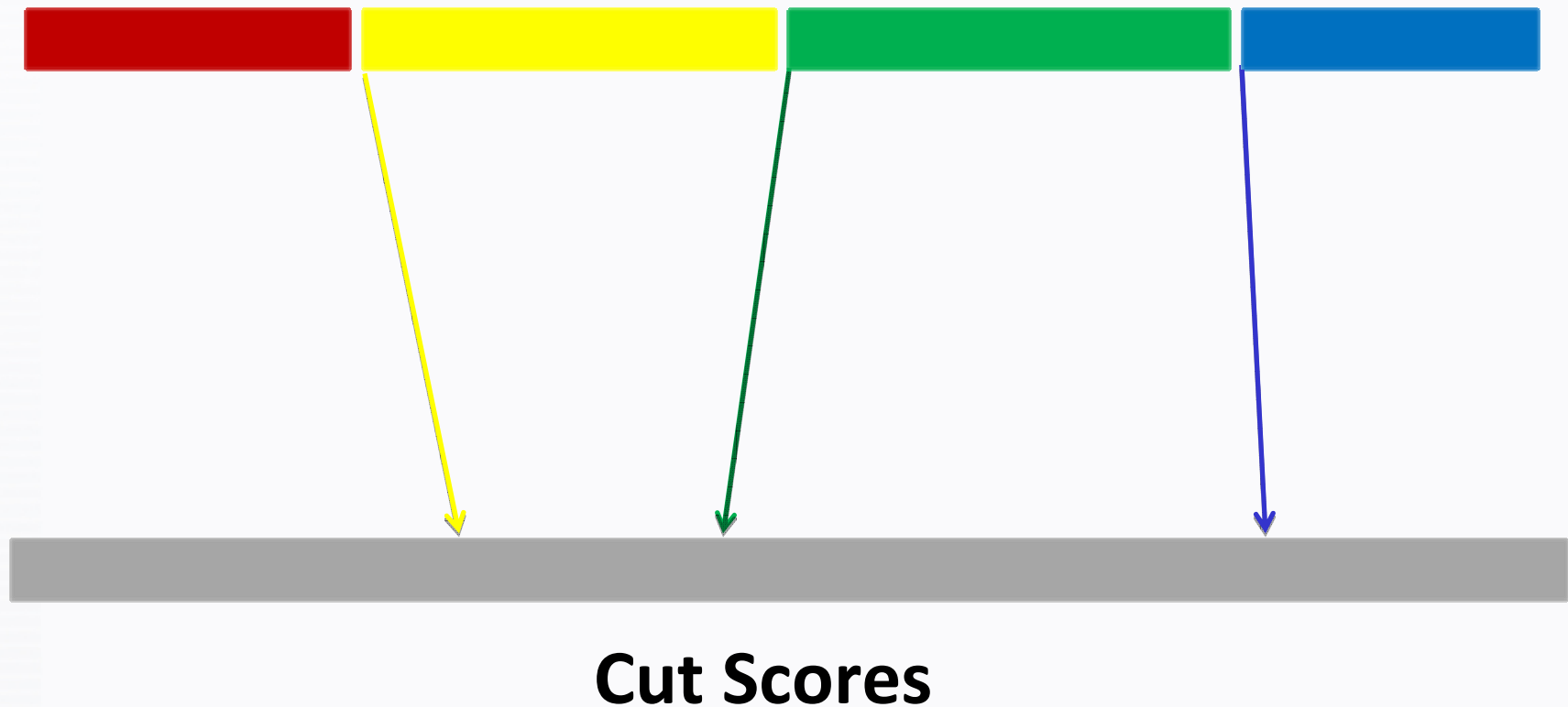
GRADE	BELOW BASIC-M	BASIC-M	PROFICIENT-M	ADVANCED-M
4	1075 - 1149 3.8%	1150 - 1274 32.3%	1275 - 1362 33.7%	1363 and Up 30.2%
5	1075 - 1149 7.9%	1150 - 1274 30.6%	1275 - 1390 37.2%	1391 and Up 24.3%
6	1075 - 1149 10.1%	1150 - 1274 33.7%	1275 - 1380 37.8%	1381 and Up 18.4%
7	1075 - 1149 11.7%	1150 - 1274 37.7%	1275 - 1384 36.9%	1385 and Up 13.7%
8	1050 - 1149 13.9%	1150 - 1274 40.0%	1275 - 1398 36.3%	1399 and Up 9.8%
11	1000 - 1149 17.4%	1150 - 1274 37.1%	1275 - 1432 40.2%	1433 and Up 5.3%

SCALED SCORE CUTS AND IMPACT - SCIENCE

GRADE	BELOW BASIC-M	BASIC-M	PROFICIENT-M	ADVANCED-M
8	1050 - 1149 12.0%	1150 - 1274 40.1%	1275 - 1418 38.2%	1419 and Up 9.7%
11	1100 - 1149 5.8%	1150 - 1274 47.6%	1275 - 1400 40.8%	1401 and Up 5.8%

PERFORMANCE LEVEL SETTING

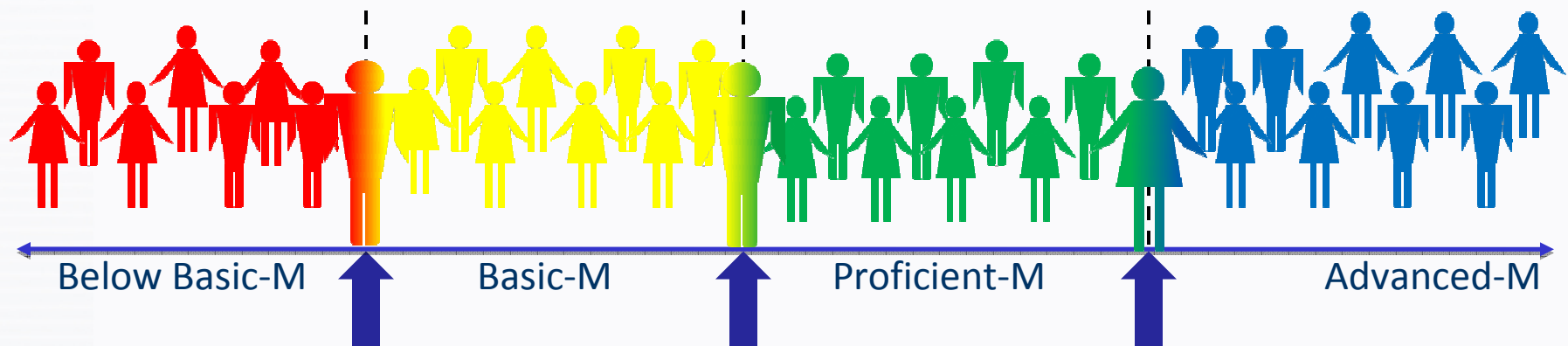
Performance Standards (i.e., PLDs)



METHODOLOGY

Ordered Item Booklet Angoff (Yes-No) Method

- Reviewed by National Technical Advisory Committee
- Hybrid of Item Mapping and Angoff Procedures
- Focuses on Items
- Utilizes concept of “**Borderline Student**”

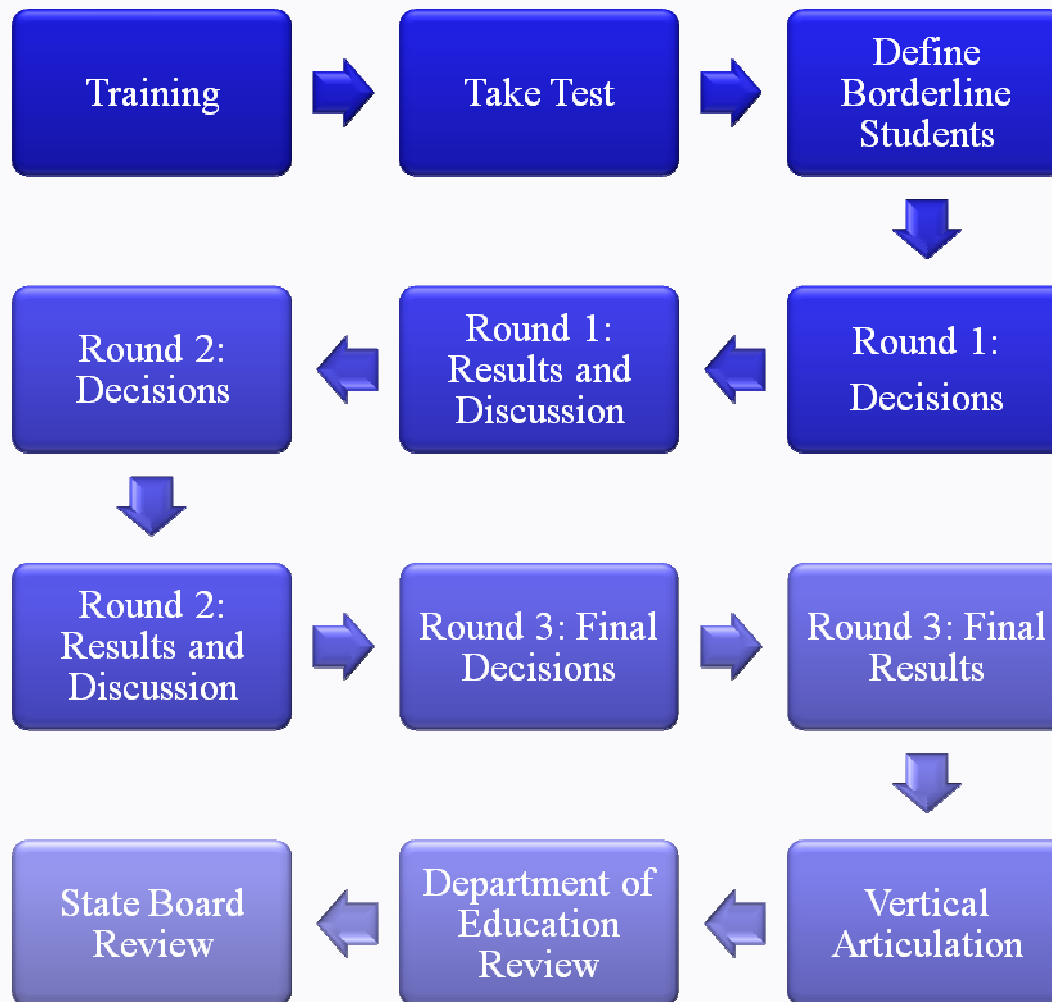


PANELISTS

General and Special Education Representatives:

- Range of teaching experience
 - Median years of teaching ~ 15 years
- Knowledge and expertise of the reading and/or science content area
- Diverse demographics

PROCESS



SCALED SCORE CUTS FOR APPROVAL

TEST	BELOW BASIC-M	BASIC-M	PROFICIENT-M	ADVANCED-M
Reading 4	1075 – 1149	1150 – 1274	1275 – 1362	1363 and Up
Reading 5	1075 – 1149	1150 – 1274	1275 – 1390	1391 and Up
Reading 6	1075 - 1149	1150 - 1274	1275 - 1380	1381 and Up
Reading 7	1075 - 1149	1150 - 1274	1275 - 1384	1385 and Up
Reading 8	1050 – 1149	1150 - 1274	1275 - 1398	1399 and Up
Reading 11	1000 - 1149	1150 - 1274	1275 - 1432	1433 and Up
Science 8	1050 - 1149	1150 - 1274	1275 - 1418	1419 and Up
Science 11	1100 - 1149	1150 - 1274	1275 - 1400	1401 and Up

RECOMMENDATIONS

Adopt Performance Level Descriptors

PSSA-M Reading Grades 4, 5, 6, 7, 8 and 11

PSSA-M Science Grades 8 and 11

Adopt Cut Scores

PSSA-M Reading Grades 4, 5, 6, 7, 8 and 11

PSSA-M Science Grades 8 and 11